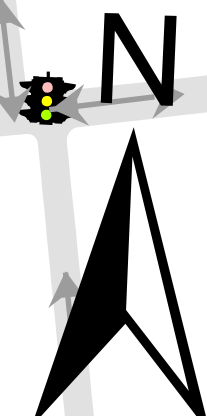
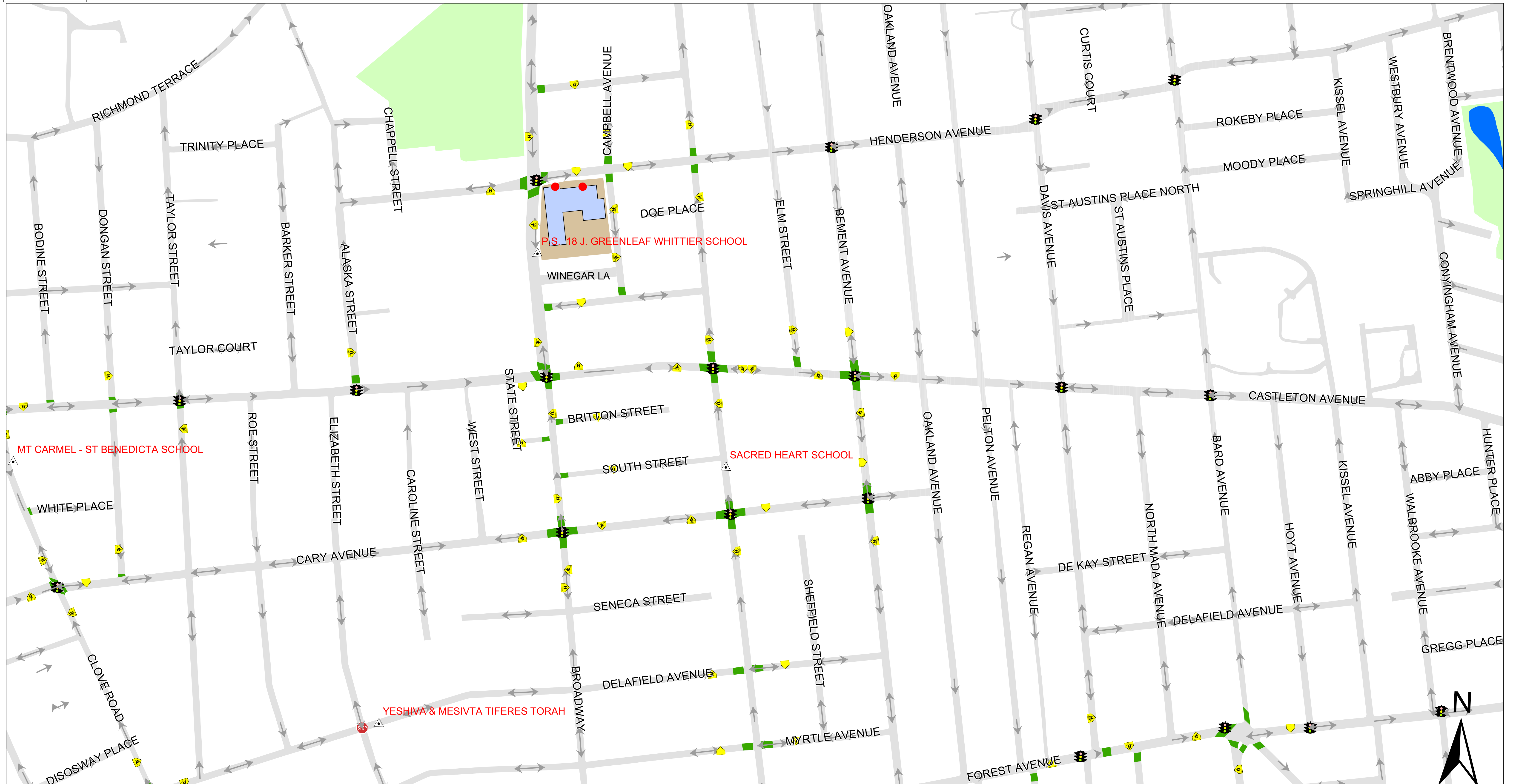




School Traffic Safety Map



The School Traffic Safety Map was established to help provide the maximum degree of safety for children going to and from school - by indicating the location of advance warning signs, speed reducers, school crosswalks and some traffic control devices. (While virtually all intersections in NYC benefit from traffic control devices - such as stop signs, traffic signals, yield signs, and all way stop signs - this map only shows traffic signals and all way stop signs.) The school crosswalks that are shown are ladder striped and make the crosswalk more visible to drivers and help make the intersection safer. These crosswalks are where school children are recommended to cross.

Note: Every attempt has been made to provide complete and accurate information that is updated regularly. The City's streets are constantly changing and it is not always possible to present information without error.

LEGEND:

TRAFFIC FLOW		TRAFFIC SIGNAL	
SCHOOL LOCATION		ALL - WAY STOP	
SCHOOL ENTRANCE		SPEED REDUCER	
SCHOOL CROSSWALK		ADVANCE WARNING SIGN	

PS 18 Staten Island
J. GREENLEAF WHITTIER SCHOOL

Prepared by the NEW YORK CITY DEPARTMENT OF TRANSPORTATION, Iris Weinshall, COMMISSIONER.

Map created on 5/10/2005

COMM. BOARD: 501
 PRECINCT: 120

1.2.9