

# **Elevate Transit: Zoning for Accessibility**

## **Queens, Community District 10**

80 St (A)

88 St (A)

Rockaway Blvd (A)

104 St (A)

111 St (A)

Ozone Park - Lefferts Blvd (A)

Aqueduct Racetrack (A)

Aqueduct - North Conduit Av (A)

Howard Beach - JFK Airport (A)



**Queens Community District 10**

Queens Community District 10

NYCT

LIRR

**MTA Station Accessibility**

Full ADA Access

Partial ADA Access

No ADA Access

**Easement Stations**

Proposed Easement Only Station

**Bonus Stations**

Proposed Easement and Bonus Station

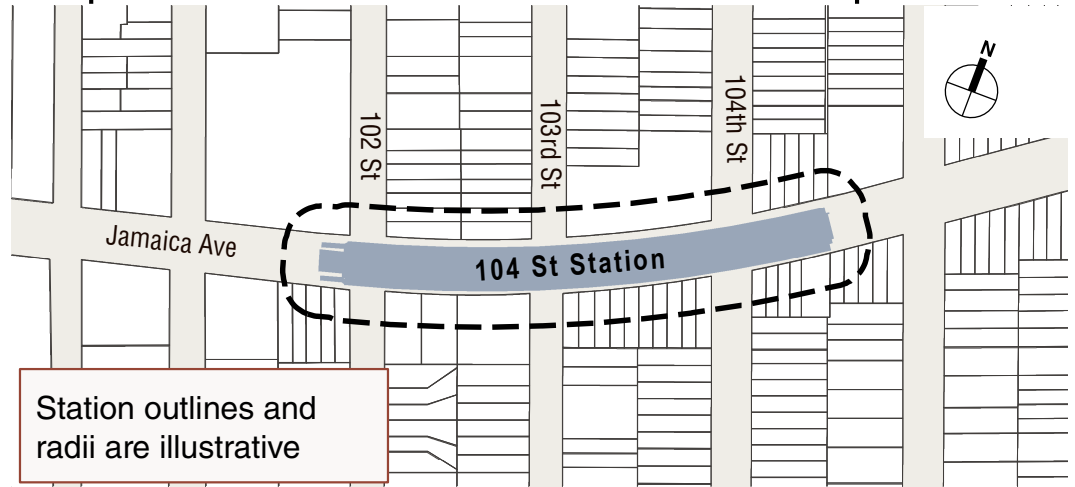
**Easement Areas**

50' Area of Applicability

**Bonus Areas**

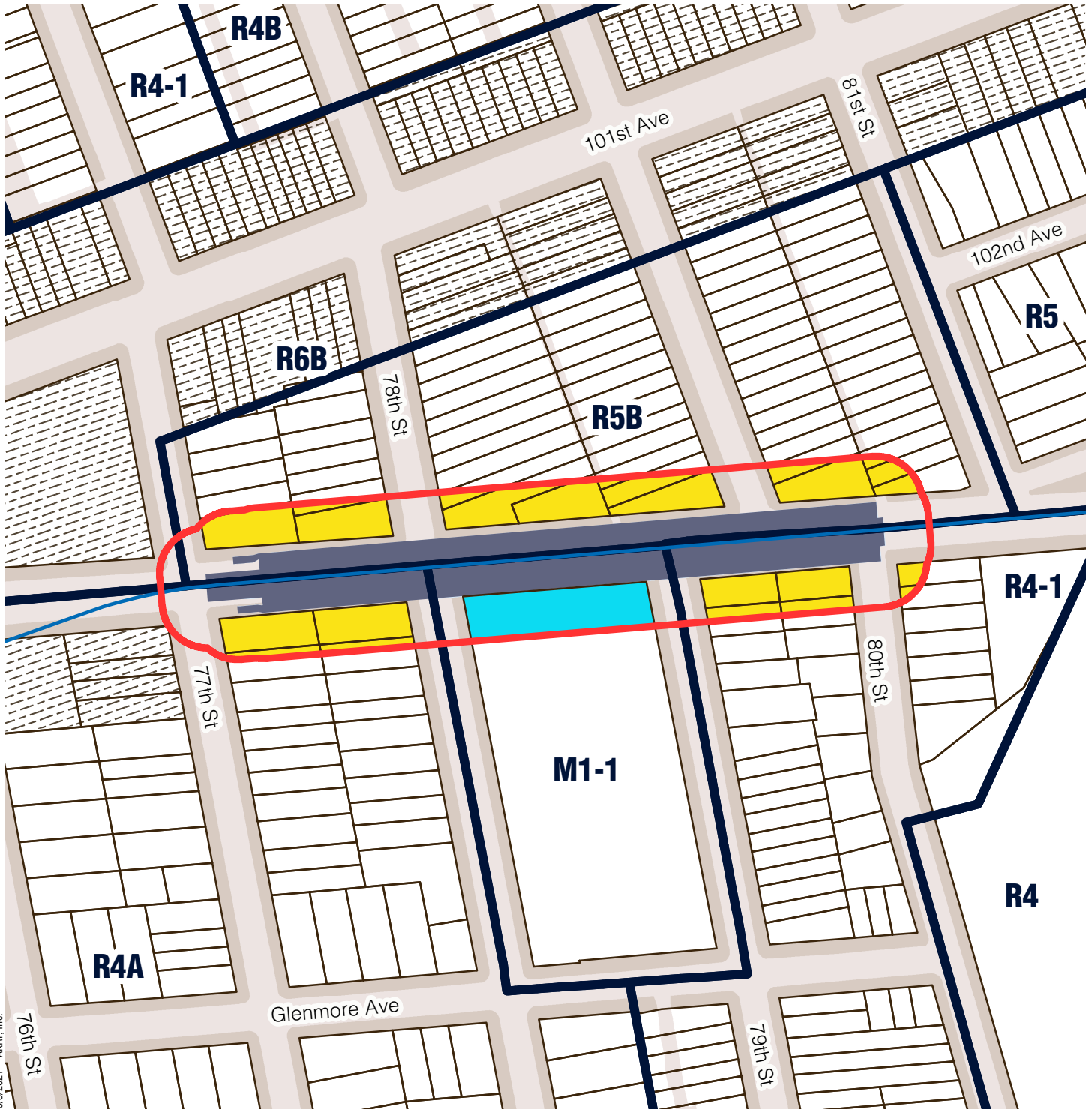
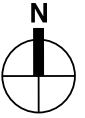
500' Area of Applicability

**Proposed 50-Foot Easement Area Example**






# Queens Community District 10




## 80 St (A)



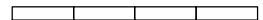
5/3/2021 - AKRF, Inc.

-  Station Envelope
-  Zoning Districts
-  Commercial Overlay

### Proposed Easement Provisions

-  50-Foot Easement Area
-  Applicable Zoning District
-  Non-Applicable Zoning District

0 200 Feet

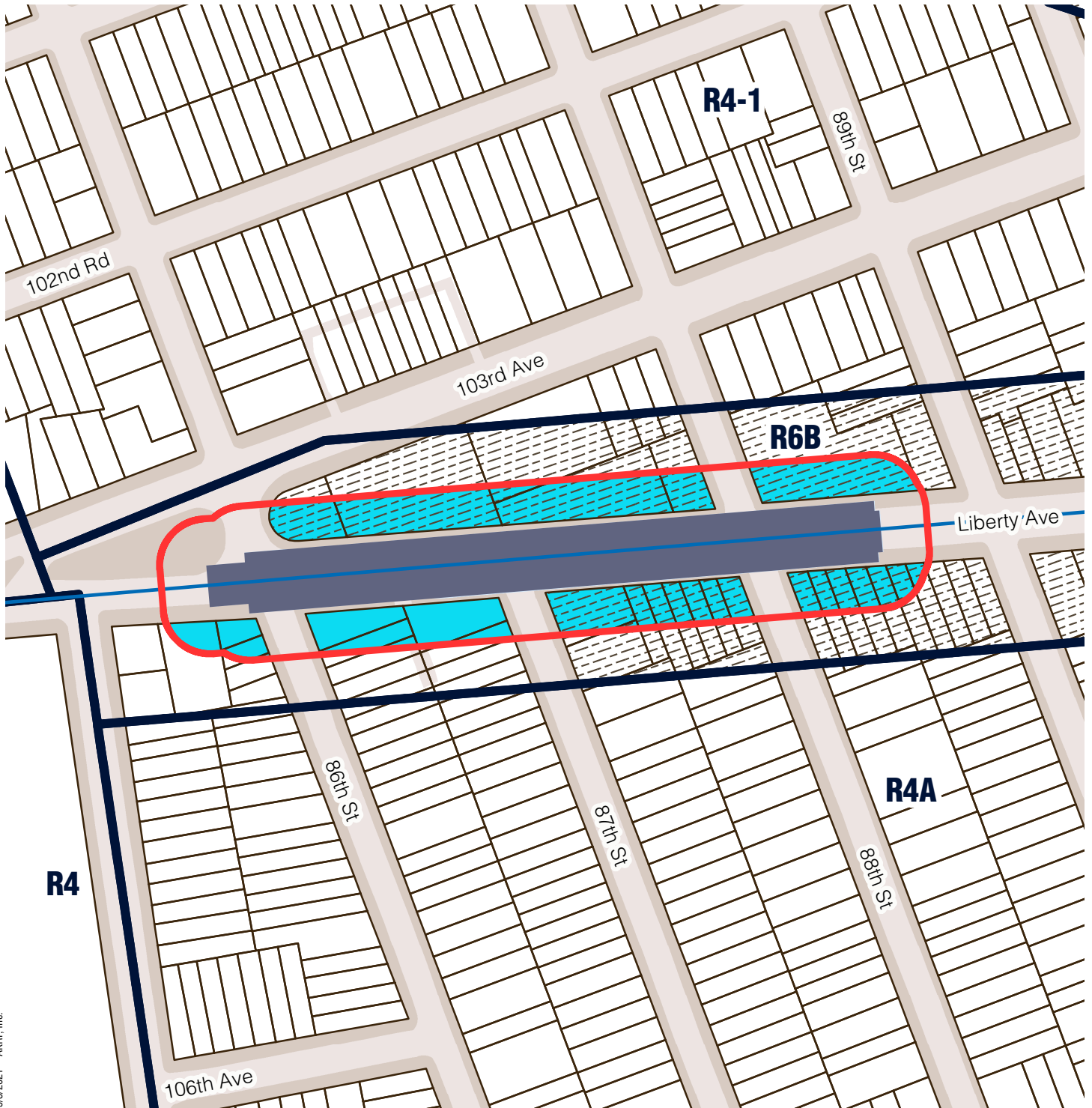
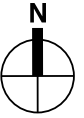


Sources/ Notes  
DCP, MapPLUTO/GIS Zoning  
Features MTA, GIS Station Areas

Station outline and area of  
applicability are approximate.

# Queens Community District 10

## 88 St (A)



5/3/2021 - AKRF, Inc.

- Station Envelope
- Zoning Districts
- Commercial Overlay

### Proposed Easement Provisions

- 50-Foot Easement Area
- Applicable Zoning District
- Non-Applicable Zoning District

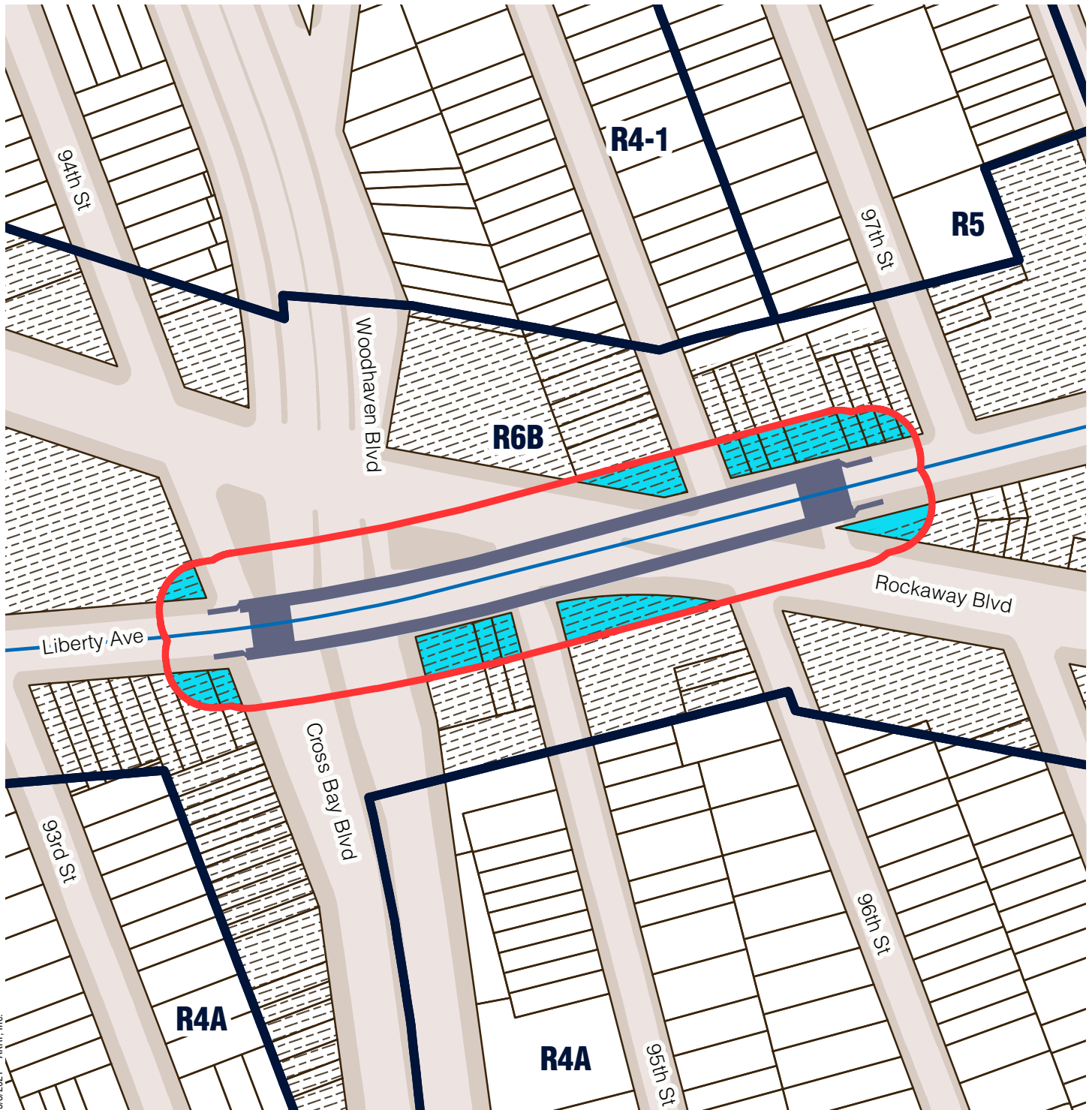
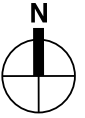
0 200 Feet

Sources/ Notes  
DCP, MapPLUTO/GIS Zoning  
Features MTA, GIS Station Areas

Station outline and area of  
applicability are approximate.

# Queens Community District 10

## Rockaway Blvd (A)



5/3/2021 - AKRF, Inc.

- Station Envelope
- Zoning Districts
- Commercial Overlay

### Proposed Easement Provisions

- 50-Foot Easement Area
- Applicable Zoning District
- Non-Applicable Zoning District

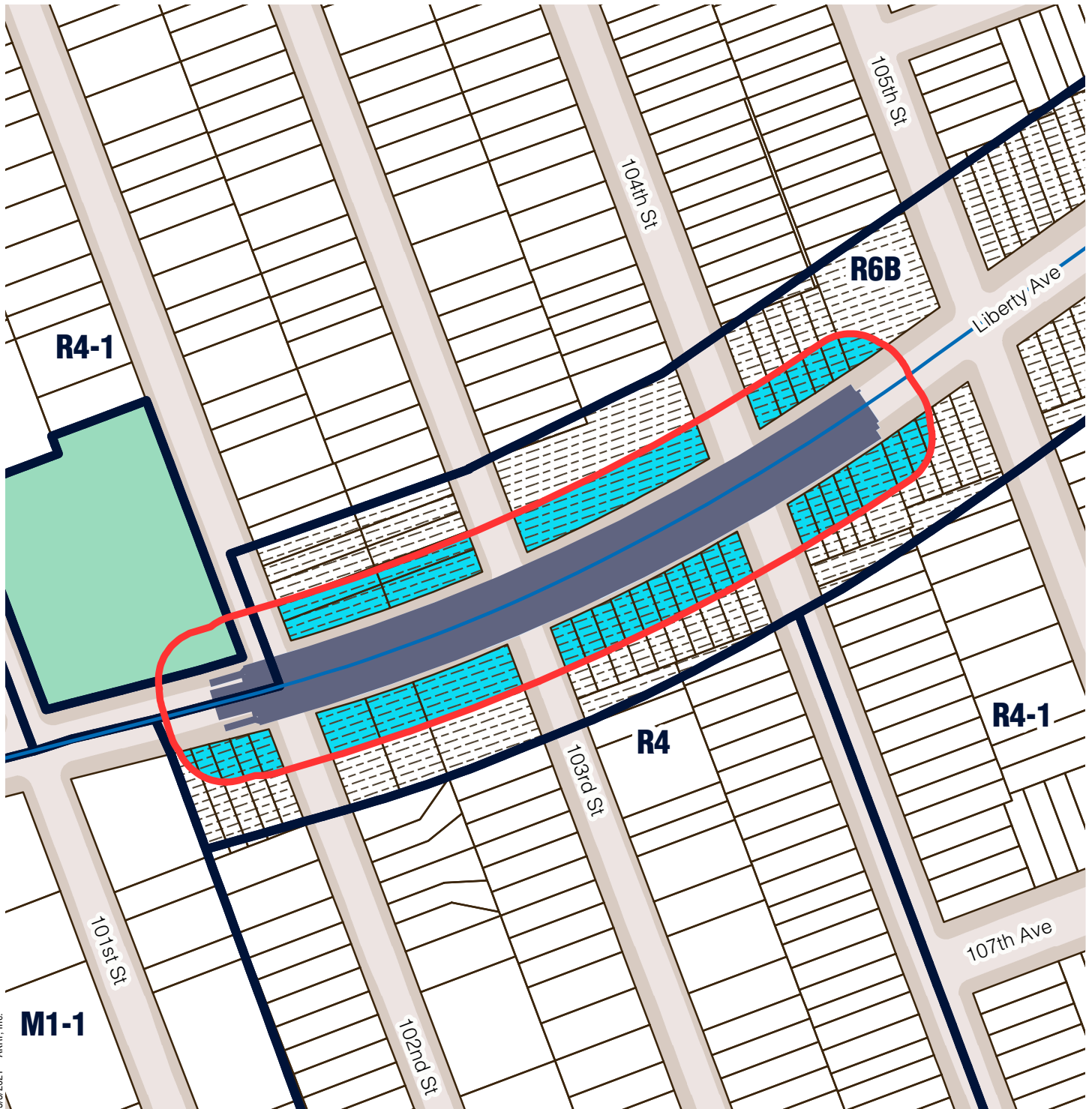
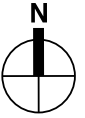
0 200 Feet

Sources/ Notes  
DCP, MapPLUTO/GIS Zoning  
Features MTA, GIS Station Areas

Station outline and area of  
applicability are approximate.

# Queens Community District 10




## 104 St (A)



5/3/2021 - AKRF, Inc.

-  Station Envelope
-  Zoning Districts
-  Commercial Overlay
-  Park

### Proposed Easement Provisions

-  50-Foot Easement Area
-  Applicable Zoning District
-  Non-Applicable Zoning District

0 200 Feet

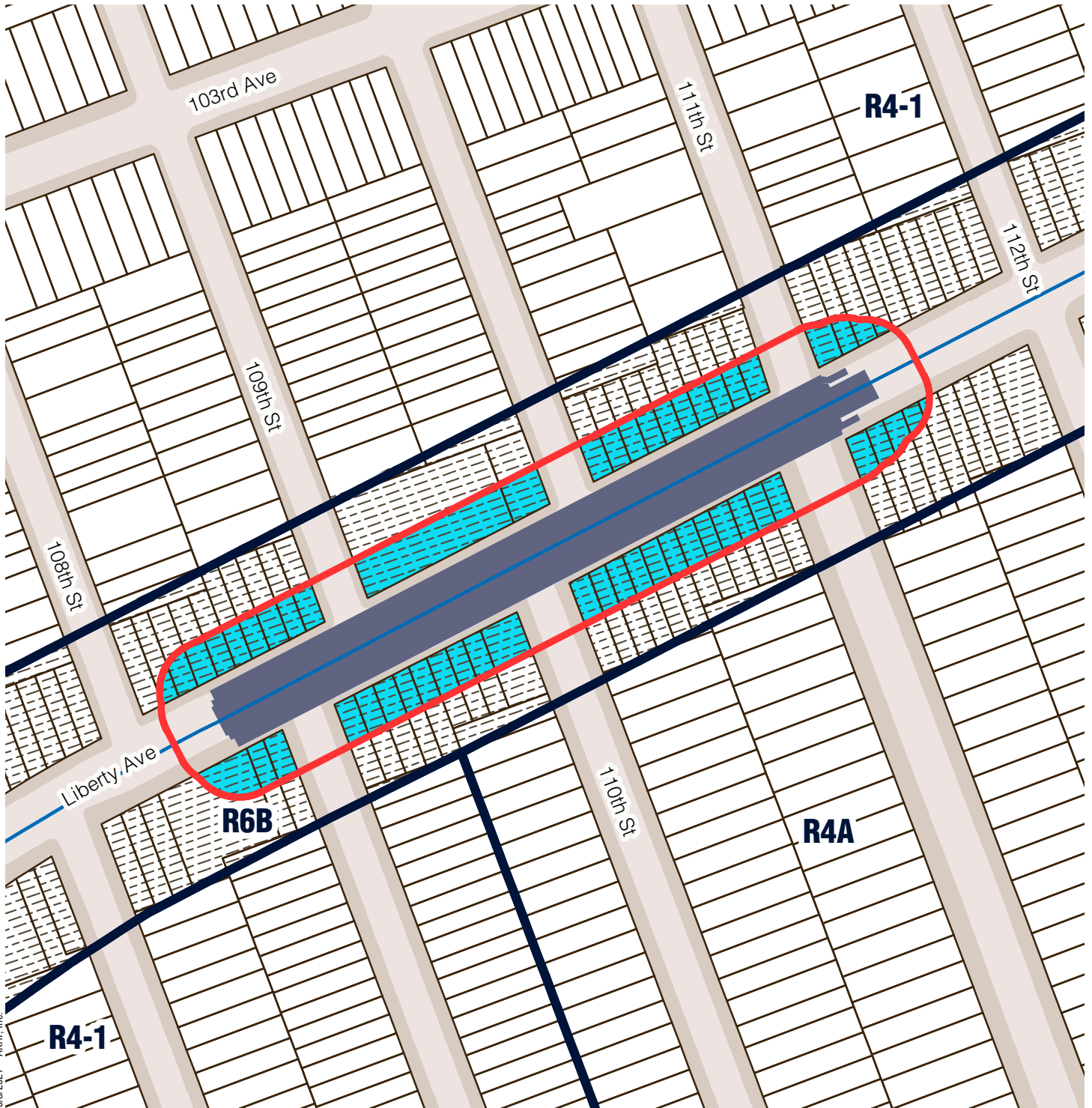
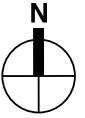


Sources/ Notes  
DCP, MapPLUTO/GIS Zoning  
Features MTA, GIS Station Areas




Station outline and area of  
applicability are approximate.

# Queens Community District 10




## 111 St (A)



5/3/2021 - AKRF, Inc.

-  Station Envelope
-  Zoning Districts
-  Commercial Overlay

### Proposed Easement Provisions

-  50-Foot Easement Area
-  Applicable Zoning District
-  Non-Applicable Zoning District

0 200 Feet

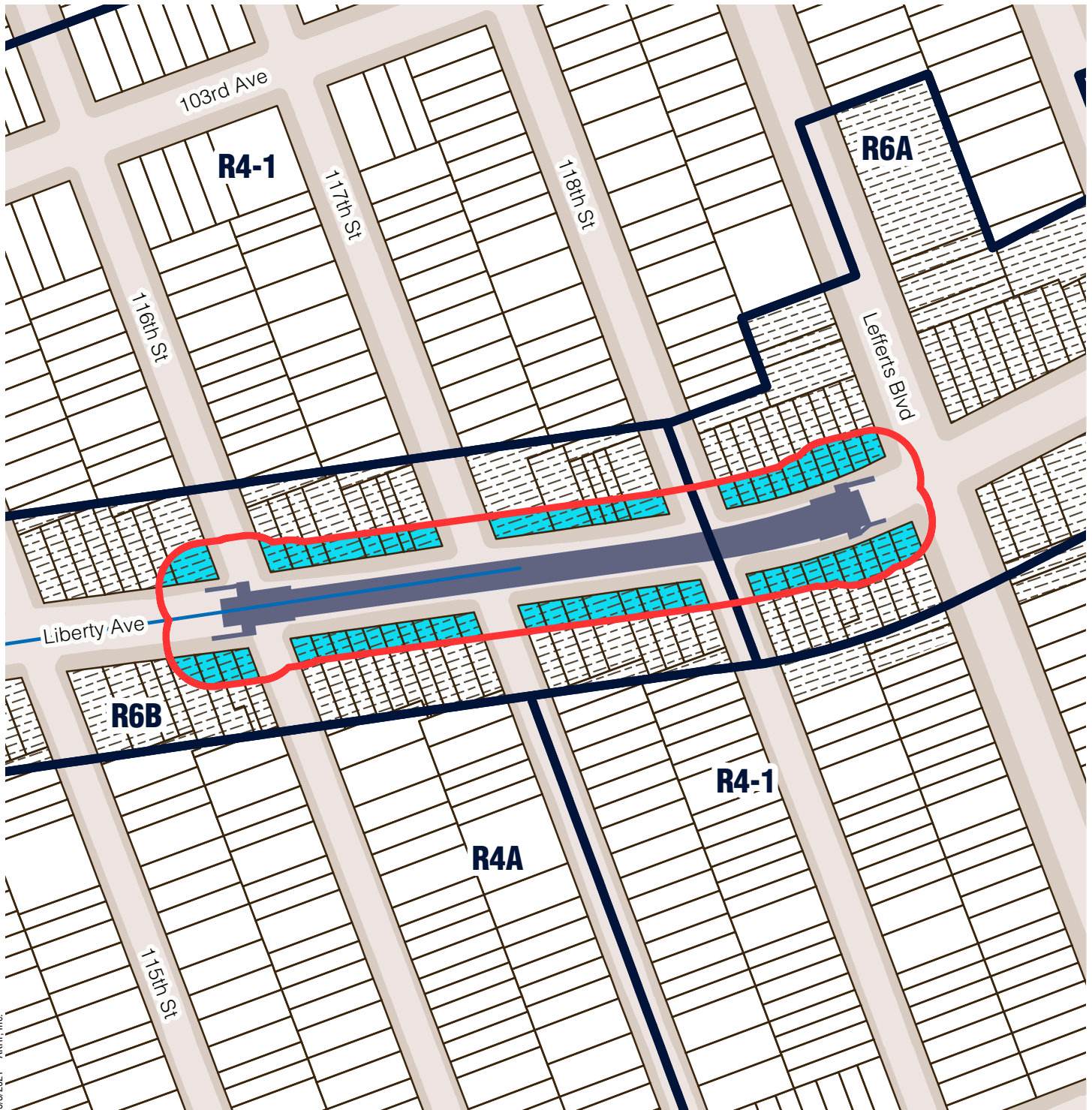
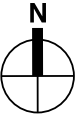


Sources/ Notes  
DCP, MapPLUTO/GIS Zoning  
Features MTA, GIS Station Areas




Station outline and area of  
applicability are approximate.

# Queens Community District 10




## Ozone Park - Lefferts Blvd (A)




5/3/2021 - AKRF, Inc.

-  Station Envelope
-  Zoning Districts
-  Commercial Overlay

### Proposed Easement Provisions

-  50-Foot Easement Area
-  Applicable Zoning District
-  Non-Applicable Zoning District

0 200 Feet



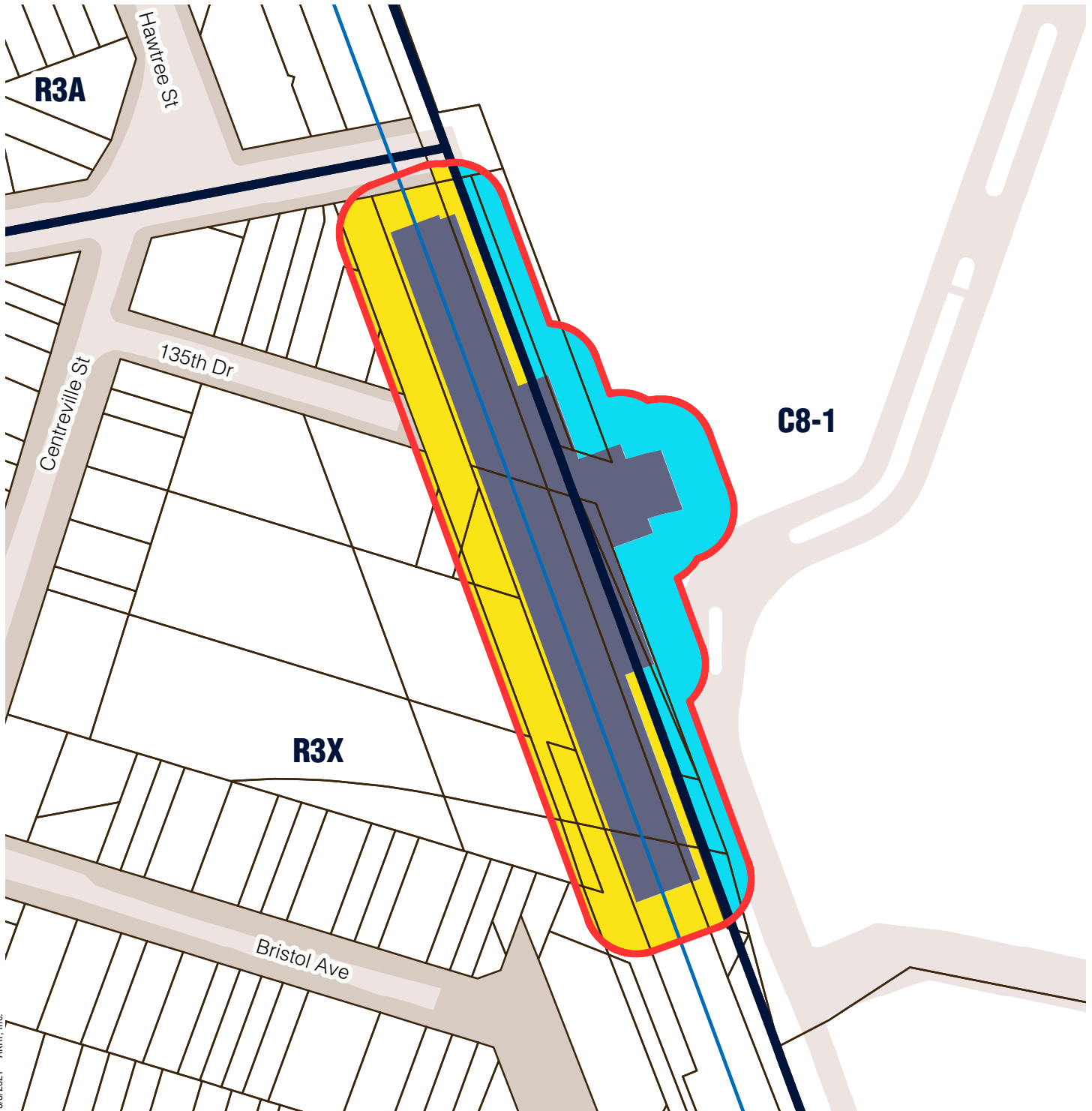
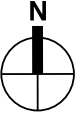
Sources/ Notes  
DCP, MapPLUTO/GIS Zoning  
Features MTA, GIS Station Areas

Station outline and area of  
applicability are approximate.







# Queens Community District 10

## Aqueduct Racetrack (A)



5/3/2021 - AKRF, Inc.

 Station Envelope  
 Zoning Districts

**Proposed Easement Provisions**  
 50-Foot Easement Area  
 Applicable Zoning District  
 Non-Applicable Zoning District

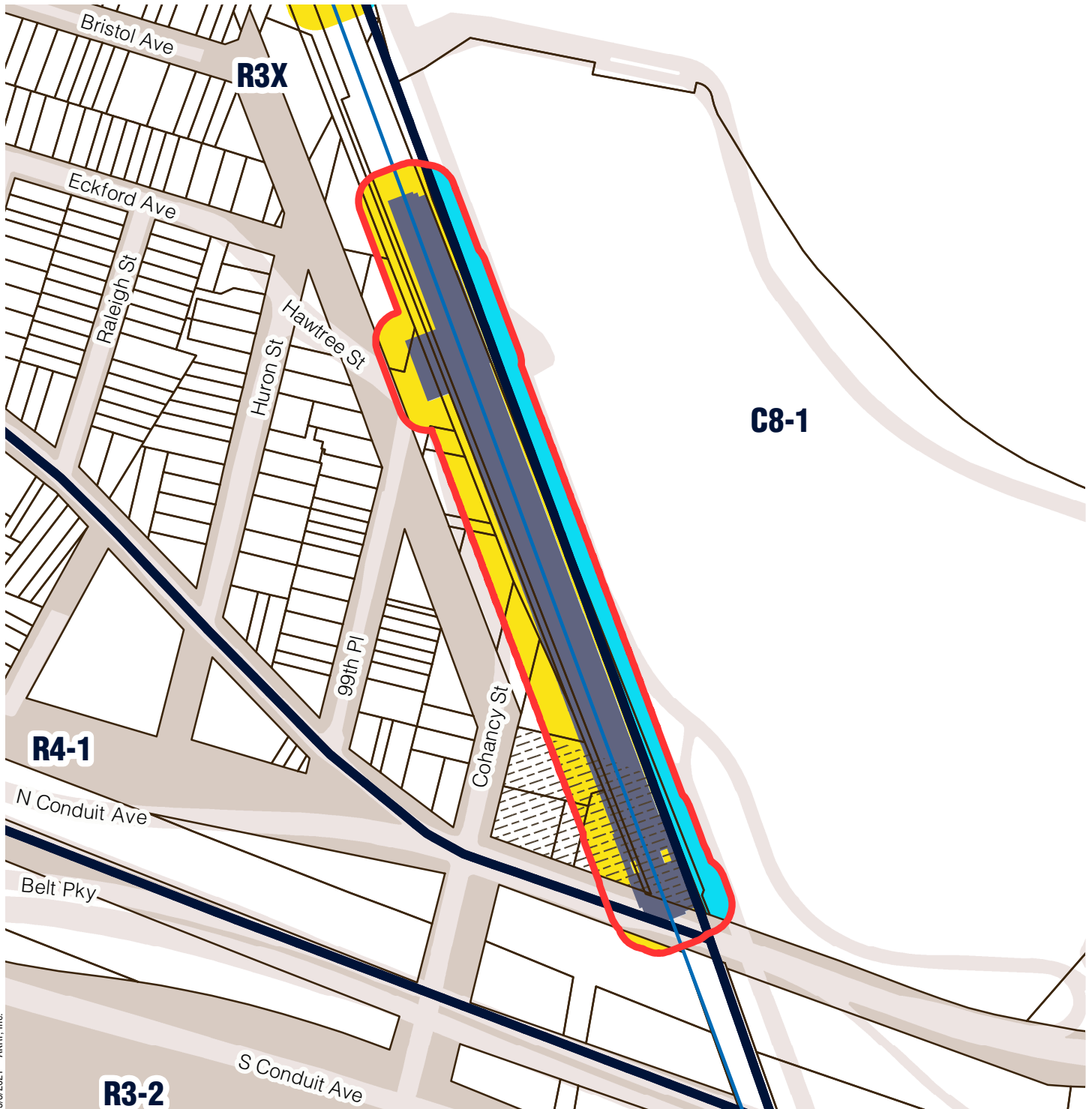
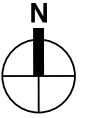
0 200 Feet  


Sources/ Notes  
 DCP, MapPLUTO/GIS Zoning  
 Features MTA, GIS Station Areas




Station outline and area of  
 applicability are approximate.

# Queens Community District 10




## Aqueduct - North Conduit Av (A)




5/3/2021 - AKRF, Inc.

-  Station Envelope
-  Zoning Districts
-  Commercial Overlay

### Proposed Easement Provisions

-  50-Foot Easement Area
-  Applicable Zoning District
-  Non-Applicable Zoning District

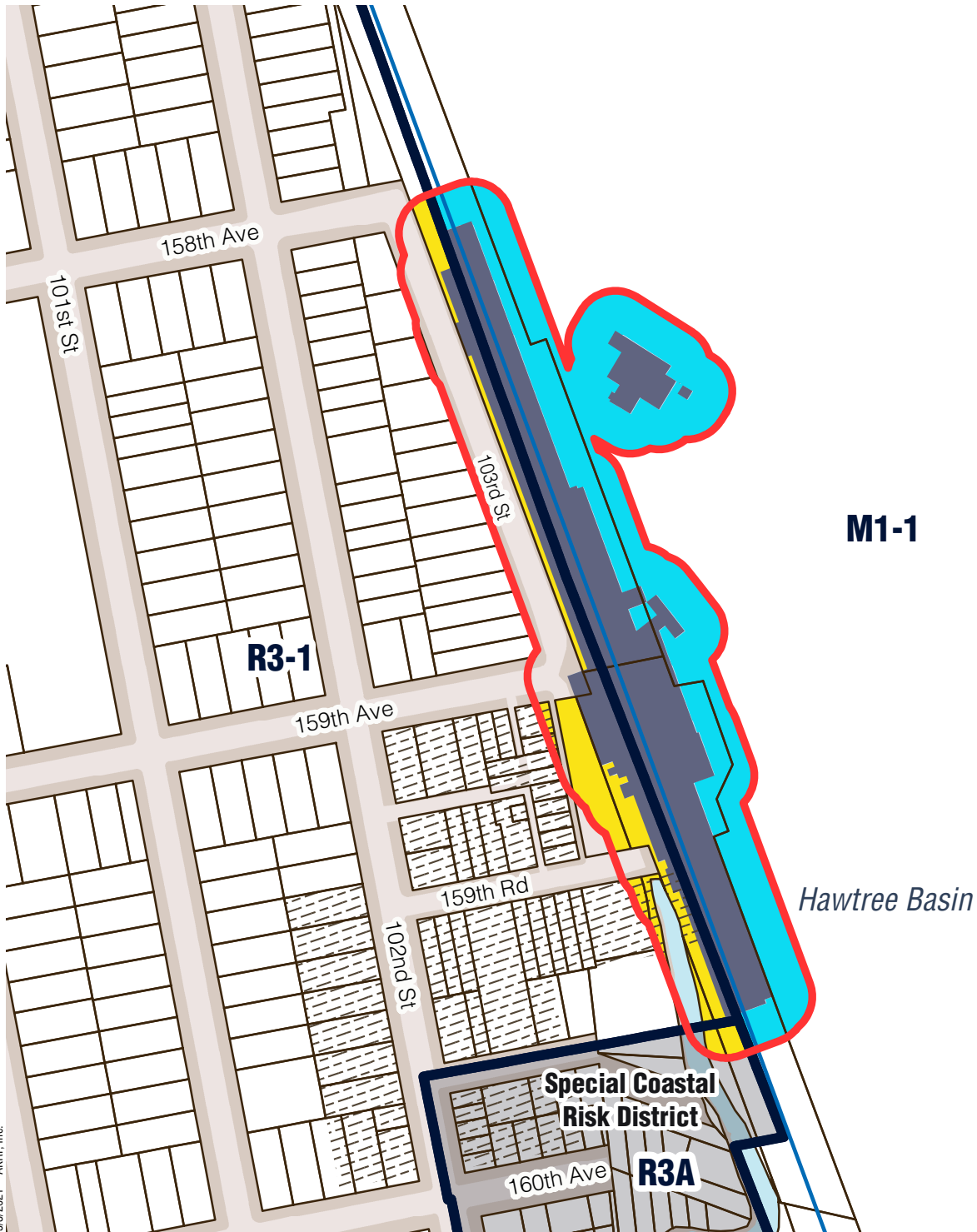
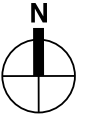
0 350 Feet  


Sources/ Notes  
DCP, MapPLUTO/GIS Zoning  
Features MTA, GIS Station Areas

Station outline and area of  
applicability are approximate.

# Queens Community District 10




## Howard Beach - JFK Airport (A)




5/3/2021 - AKRF, Inc.

-  Station Envelope
-  Zoning Districts
-  Commercial Overlay
-  Special District

### Proposed Easement Provisions

-  50-Foot Easement Area
-  Applicable Zoning District
-  Non-Applicable Zoning District

0 250 Feet



Sources/ Notes  
DCP, MapPLUTO/GIS Zoning  
Features MTA, GIS Station Areas

Station outline and area of  
applicability are approximate.