

Elevate Transit: Zoning for Accessibility

Bronx, Community District 8

Van Cortlandt Park - 242 St (1)

238 St (1)

231 St (1)

Marble Hill - 225 St (1)

Riverdale (MNR)

Spuyten Duyvil (MNR)

Marble Hill (MNR)



Bronx Community District 8

Bronx Community District 8

NYCT

MNR

MTA Station Accessibility

Full ADA Access

Partial ADA Access

No ADA Access

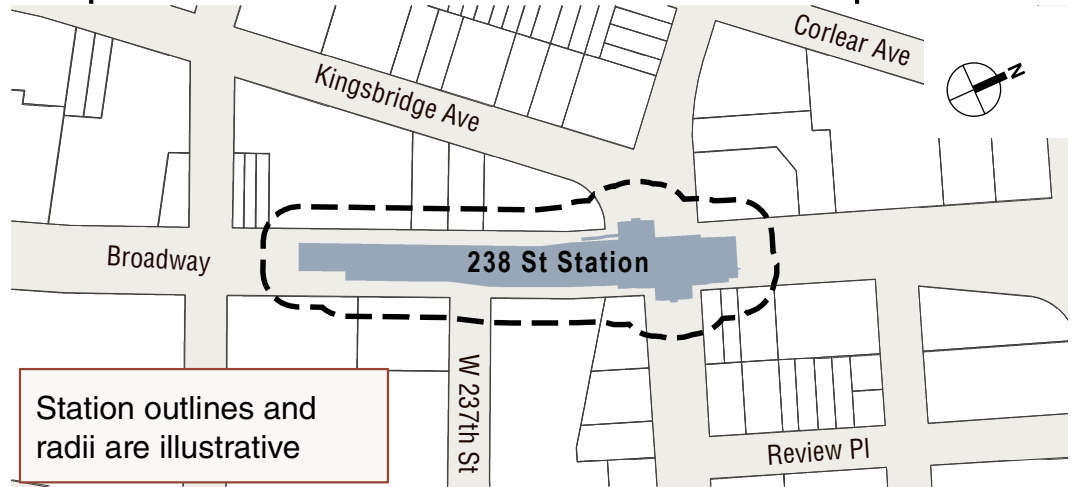
Easement Stations

Proposed Easement Only Station

Easement Areas

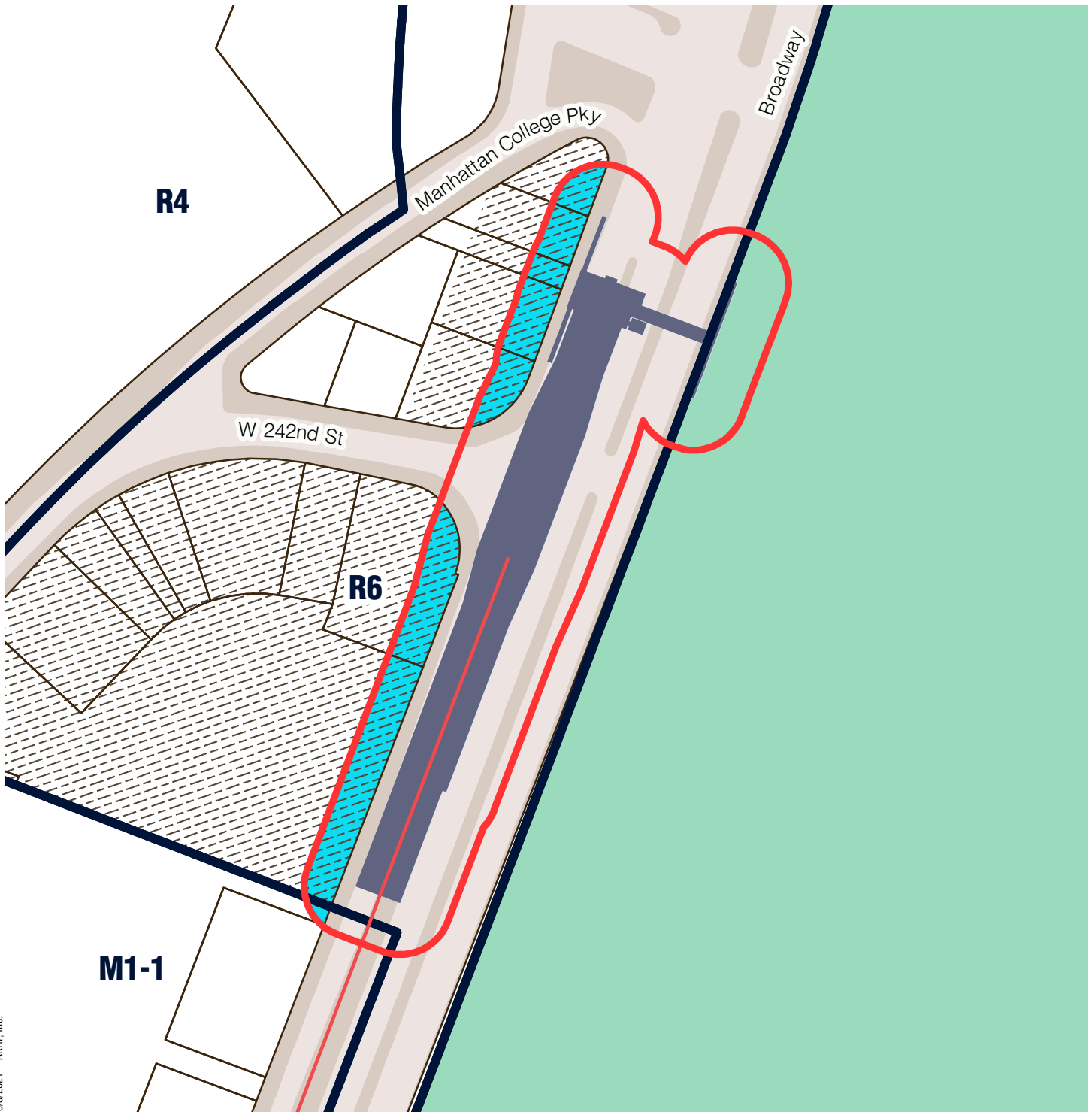
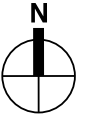
50' Area of Applicability

Proposed 50-Foot Easement Area Example







Bronx Community District 8




Van Cortlandt Park - 242 St (1)



5/3/2021 - AKRF, Inc.

-  Station Envelope
-  Zoning Districts
-  Commerical Overlay
-  Park

Proposed Easement Provisions

-  50-Foot Easement Area
-  Applicable Zoning District
-  Non-Applicable Zoning District

0 200 Feet

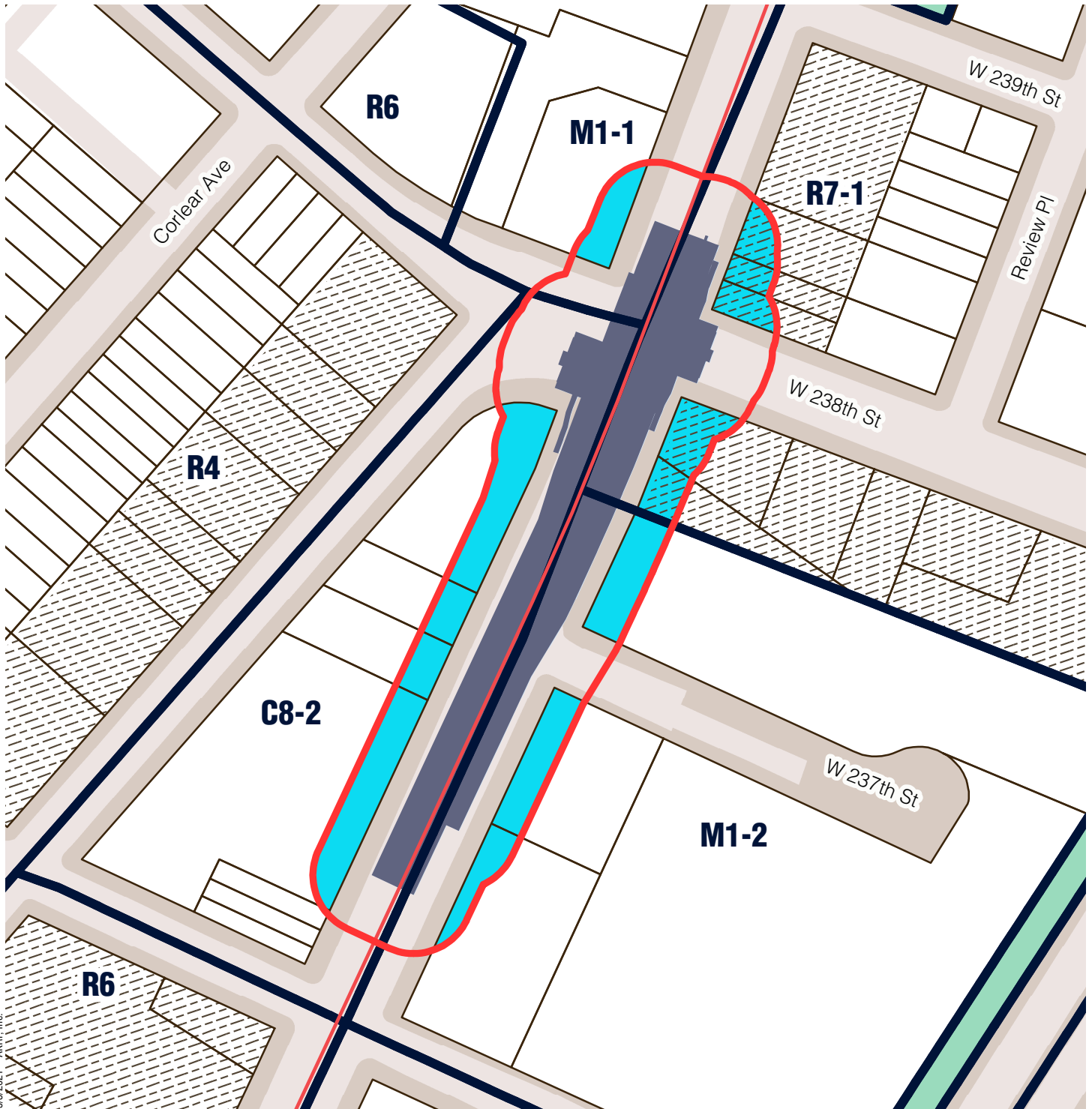
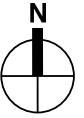


Sources/ Notes
DCP, MapPLUTO/GIS Zoning
Features MTA, GIS Station Areas

Station outline and area of
applicability are approximate.

Bronx Community District 8

238 St (1)



5/3/2021 - AKRF, Inc.

- Station Envelope
- Zoning Districts
- Commerical Overlay
- Park

Proposed Easement Provisions

- 50-Foot Easement Area
- Applicable Zoning District
- Non-Applicable Zoning District

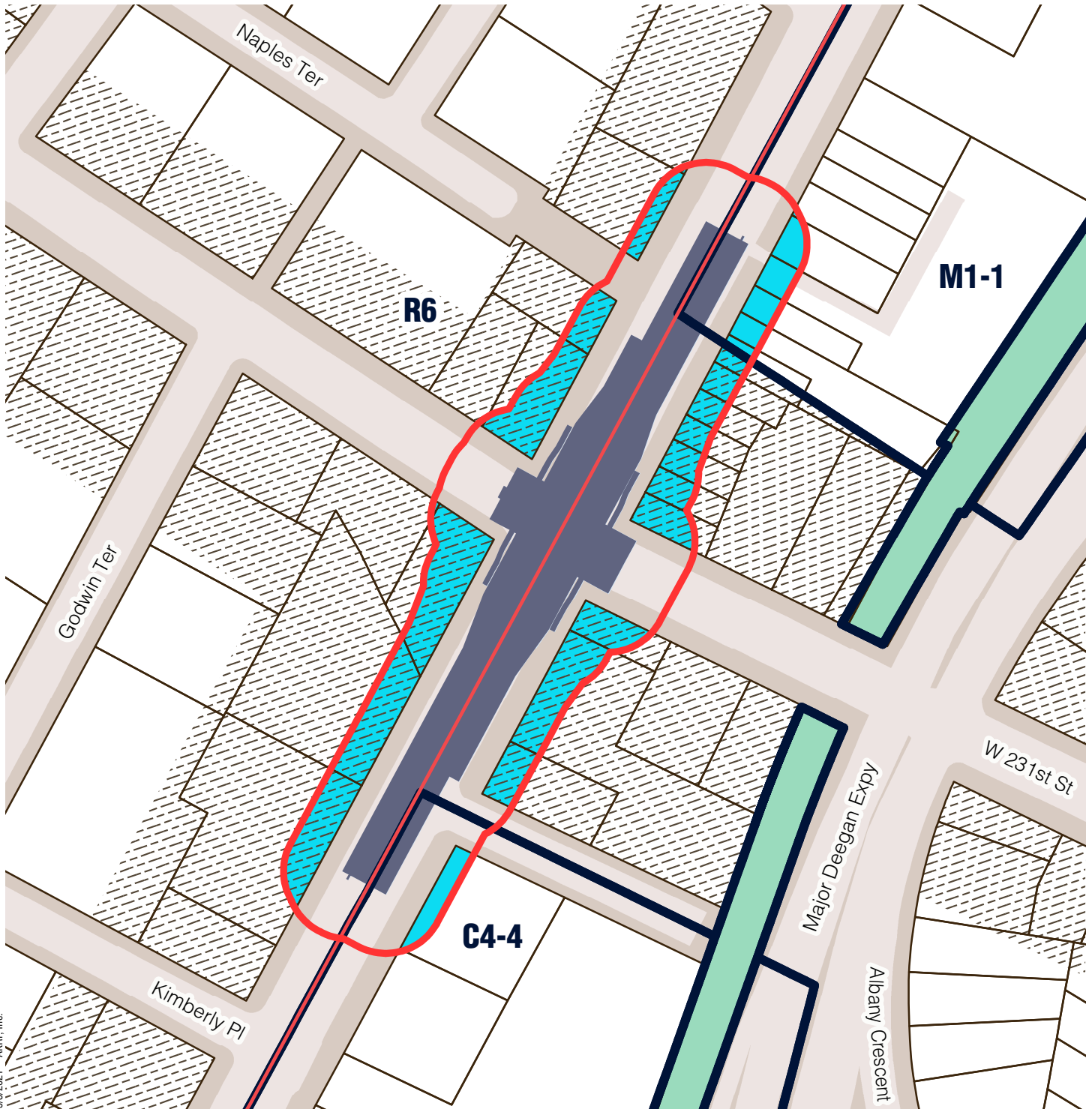
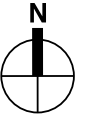
0 150 Feet

Sources/ Notes
DCP, MapPLUTO/GIS Zoning
Features MTA, GIS Station Areas


Station outline and area of
applicability are approximate.

Bronx Community District 8

231 St (1)



5/3/2021 - AKRF, Inc.

 Station Envelope

 Zoning Districts

 Commercial Overlay

 Park

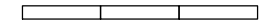
Proposed Easement Provisions

 50-Foot Easement Area

 Applicable Zoning District

 Non-Applicable Zoning District

0 150 Feet

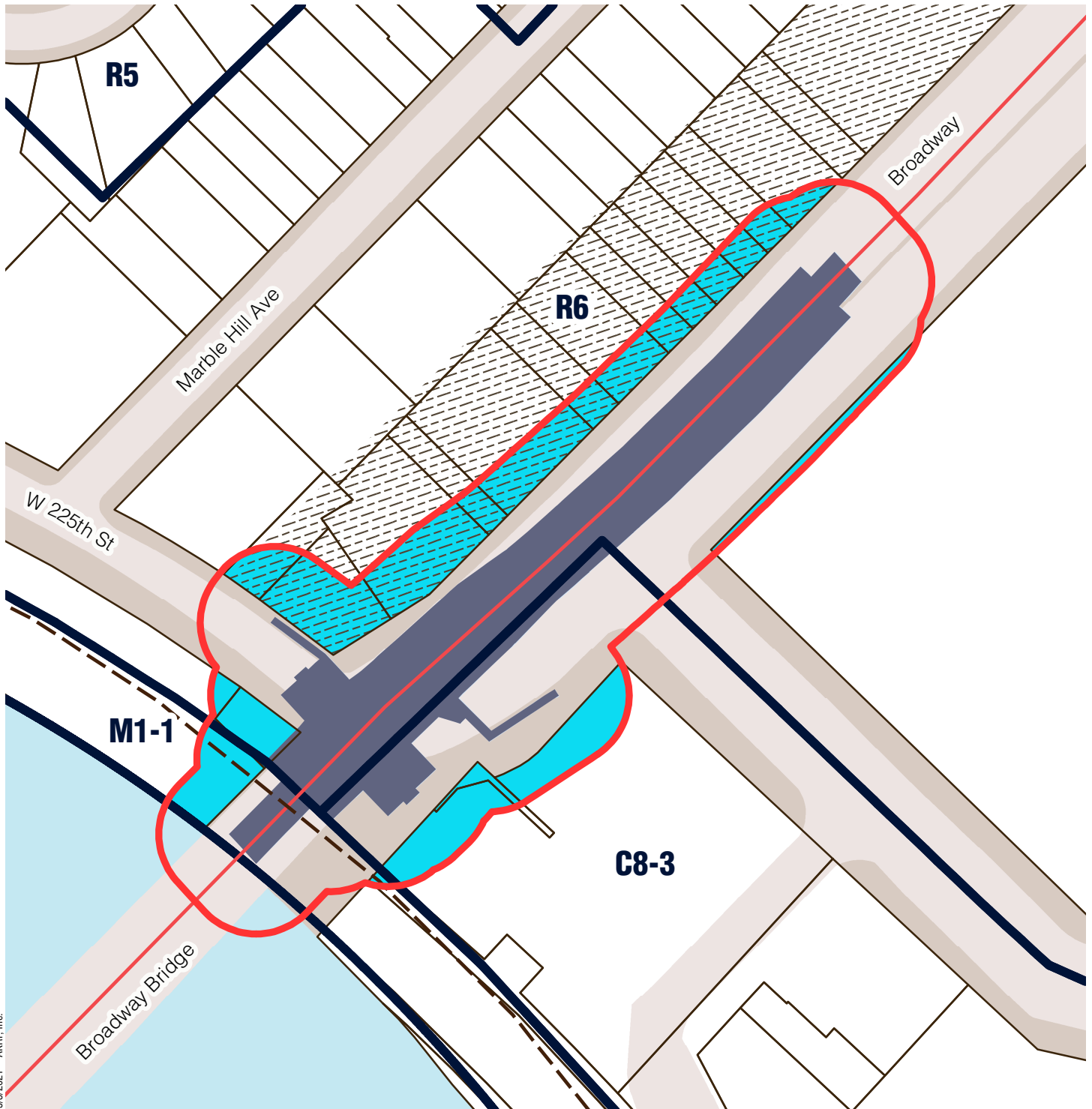
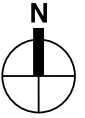


Sources/ Notes
DCP, MapPLUTO/GIS Zoning
Features MTA, GIS Station Areas

Station outline and area of
applicability are approximate.

Bronx Community District 8

Marble Hill - 225 St (1)



5/3/2021 - AKRF, Inc.

- Station Envelope
- Zoning Districts
- Commerical Overlay

Proposed Easement Provisions

- 50-Foot Easement Area
- Applicable Zoning District
- Non-Applicable Zoning District

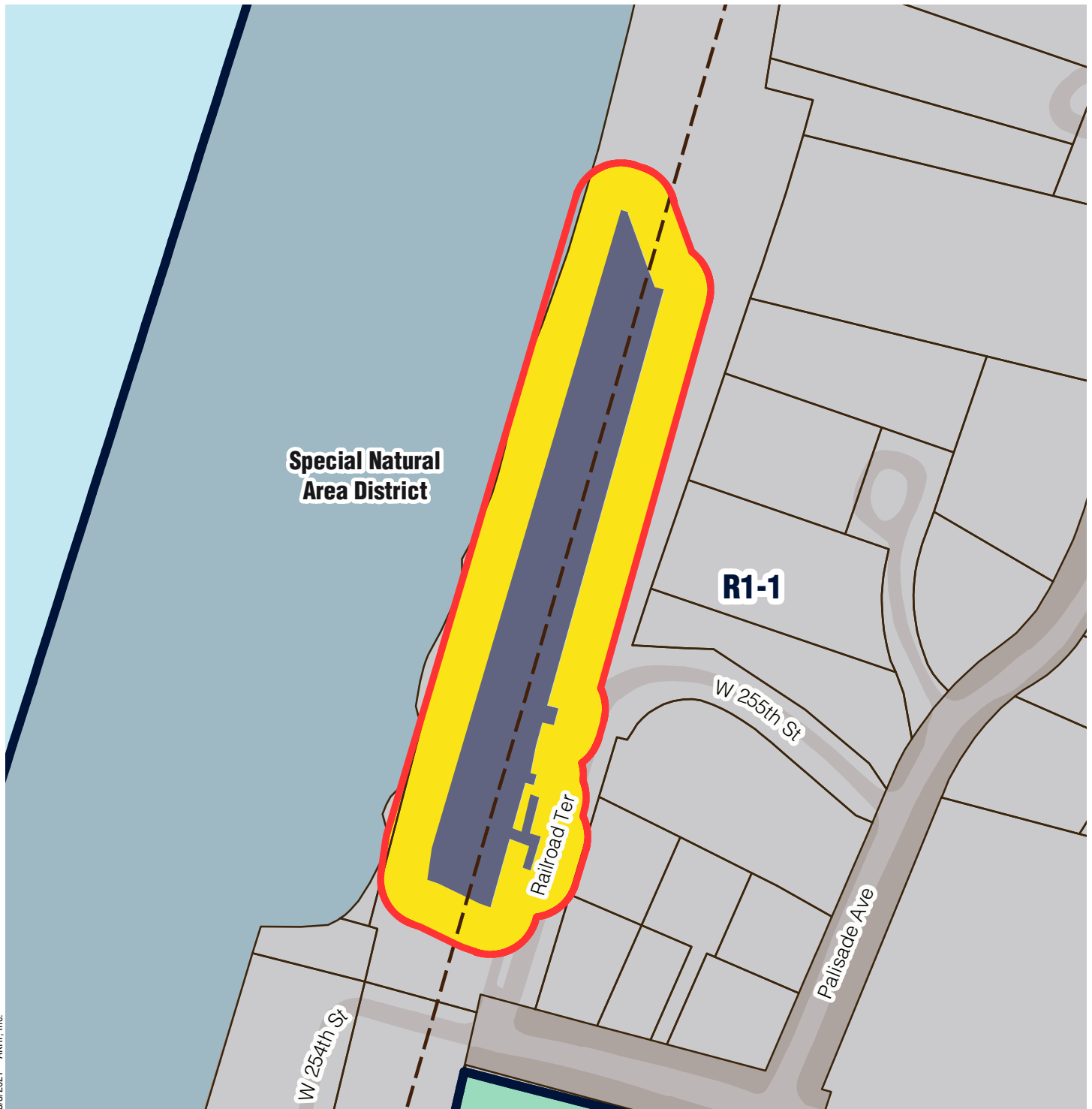
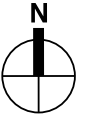
0 100 Feet

Sources/ Notes
DCP, MapPLUTO/GIS Zoning
Features MTA, GIS Station Areas

Station outline and area of
applicability are approximate.

Bronx Community District 8

Riverdale (MNR)



5/3/2021 - AKRF, Inc.

- Station Envelope
- Zoning Districts
- Park
- Special District

Proposed Easement Provisions

- 50-Foot Easement Area
- Applicable Zoning District
- Non-Applicable Zoning District

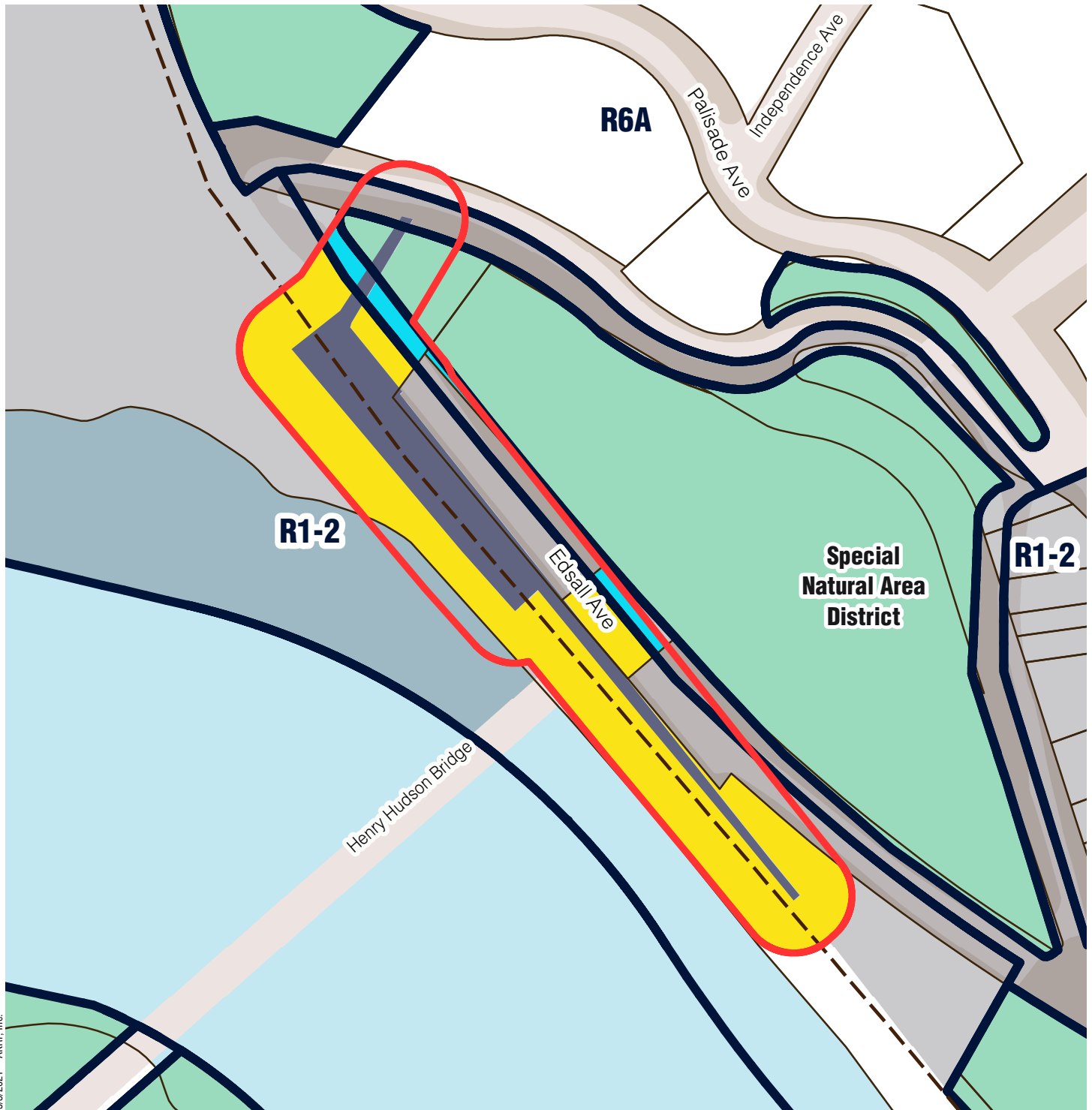
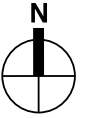
0 200 Feet

Sources/ Notes
DCP, MapPLUTO/GIS Zoning
Features MTA, GIS Station Areas





Station outline and area of
applicability are approximate.

Bronx Community District 8




Spuyten Duyvil (MNR)




5/3/2021 - AKRF, Inc.

-  Station Envelope
-  Zoning Districts
-  Park
-  Special District

Proposed Easement Provisions

-  50-Foot Easement Area
-  Applicable Zoning District
-  Non-Applicable Zoning District

0 150 Feet

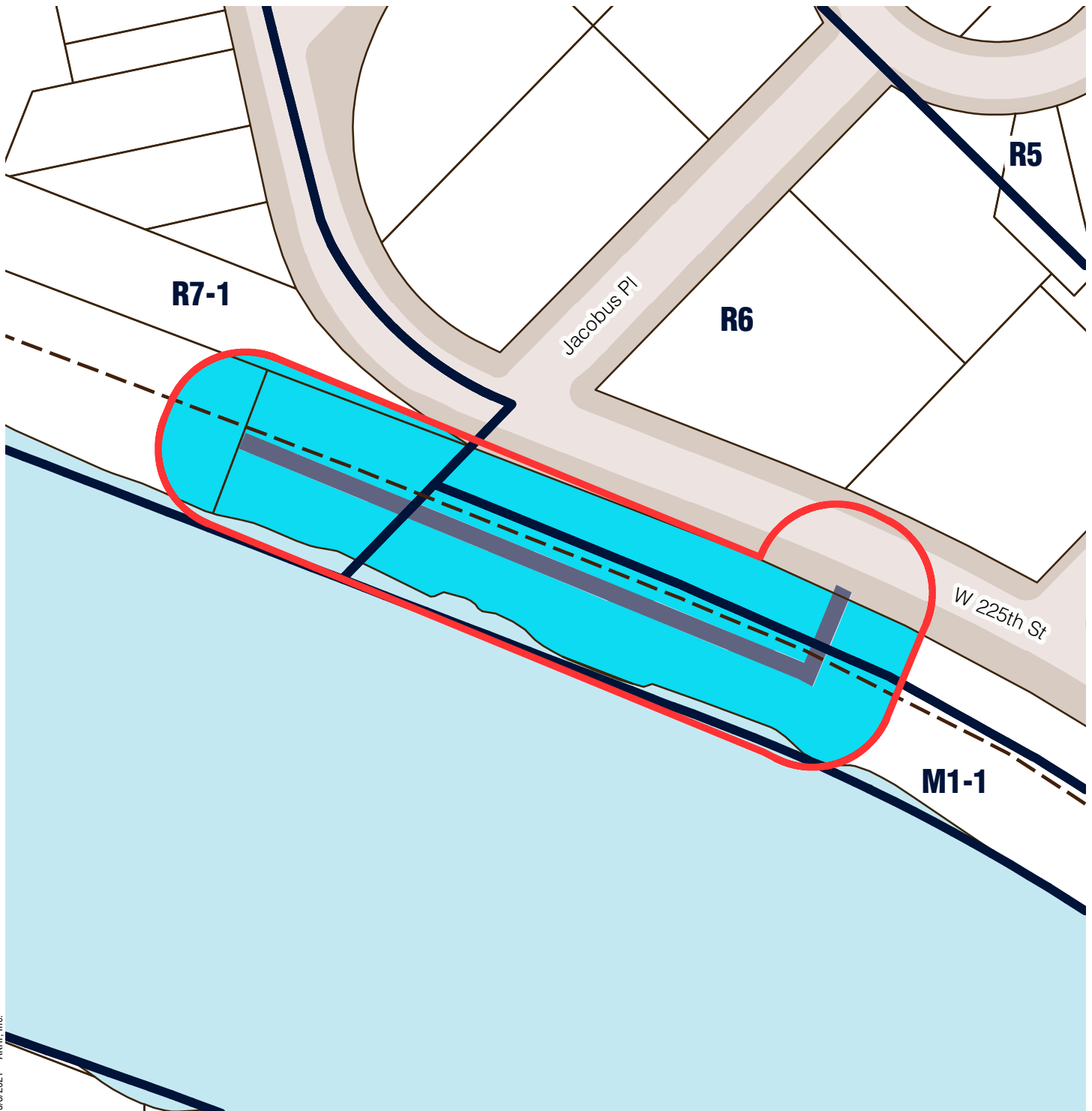
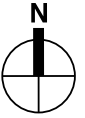


Sources/ Notes
DCP, MapPLUTO/GIS Zoning
Features MTA, GIS Station Areas



Station outline and area of
applicability are approximate.

Bronx Community District 8




Marble Hill (MNR)



5/3/2021 - AKRF, Inc.

-  Station Envelope
-  Zoning Districts

Proposed Easement Provisions

-  50-Foot Easement Area
-  Applicable Zoning District
-  Non-Applicable Zoning District

0 100 Feet



Sources/ Notes
DCP, MapPLUTO/GIS Zoning
Features MTA, GIS Station Areas

Station outline and area of
applicability are approximate.