

# **Elevate Transit: Zoning for Accessibility**

## **Brooklyn, Community District 13**

Bay 50 St (D)

Coney Island - Stillwell Av (D, F, N, Q)

86 St (N)

Avenue X (F)

Neptune Av (F)

W 8 St - NY Aquarium (F, Q)

Brighton Beach (B, Q)

Ocean Pkwy (Q)



Brooklyn Community District 13

NYCT

**MTA Station Accessibility**

Full ADA Access

Partial ADA Access

No ADA Access

**Easement Stations**

Proposed Easement Only Station

**Easement Areas**

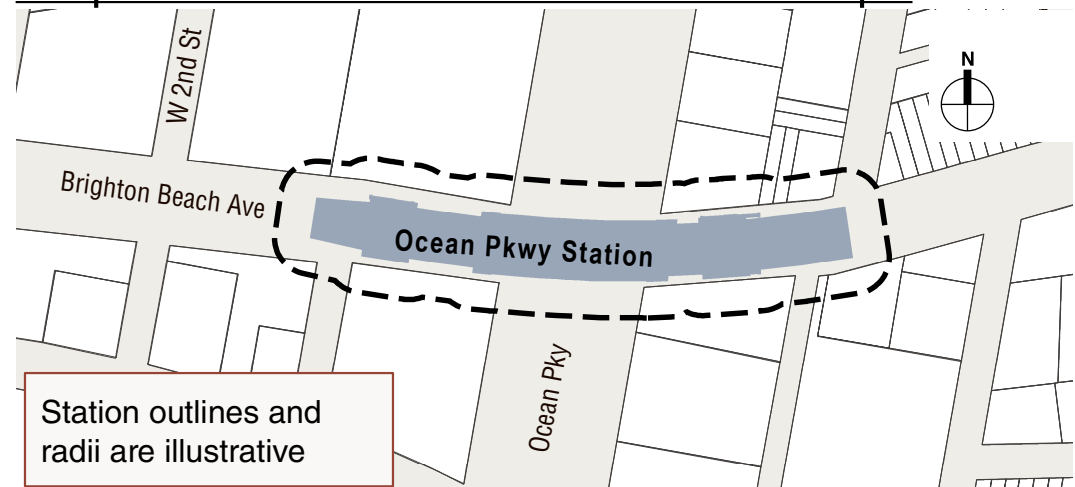
50' Area of Applicability

5/2/2021 - AKRF, Inc.

0 2,000 Feet

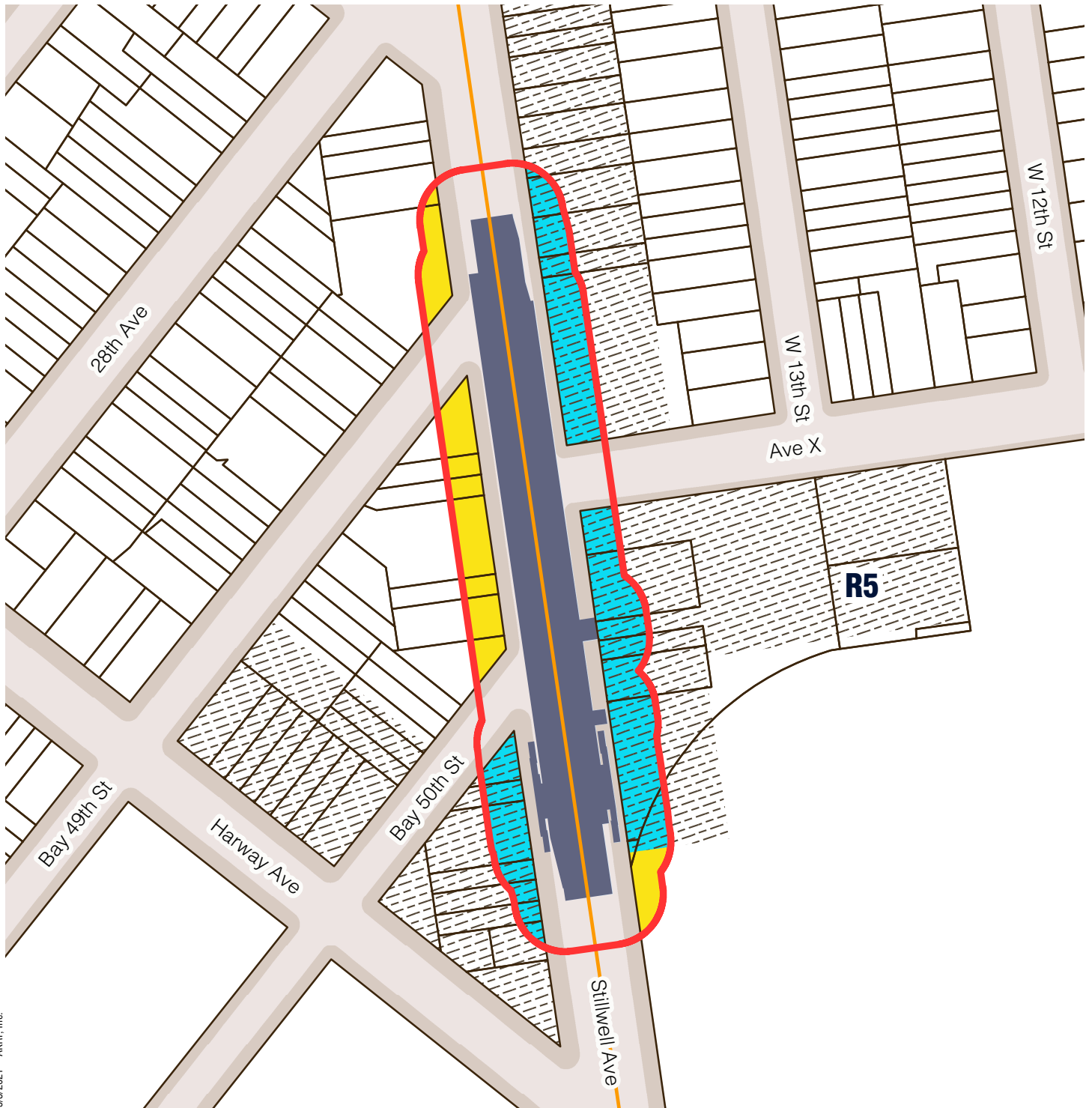
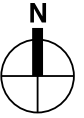
**Brooklyn Community District 13**

**Proposed 50-Foot Easement Area Example**






# Brooklyn Community District 13




## Bay 50 St (D)



5/3/2021 - AKRF, Inc.

-  Station Envelope
-  Zoning Districts
-  Commercial Overlay

### Proposed Easement Provisions

-  50-Foot Easement Area
-  Applicable Zoning District
-  Non-Applicable Zoning District

0 200 Feet

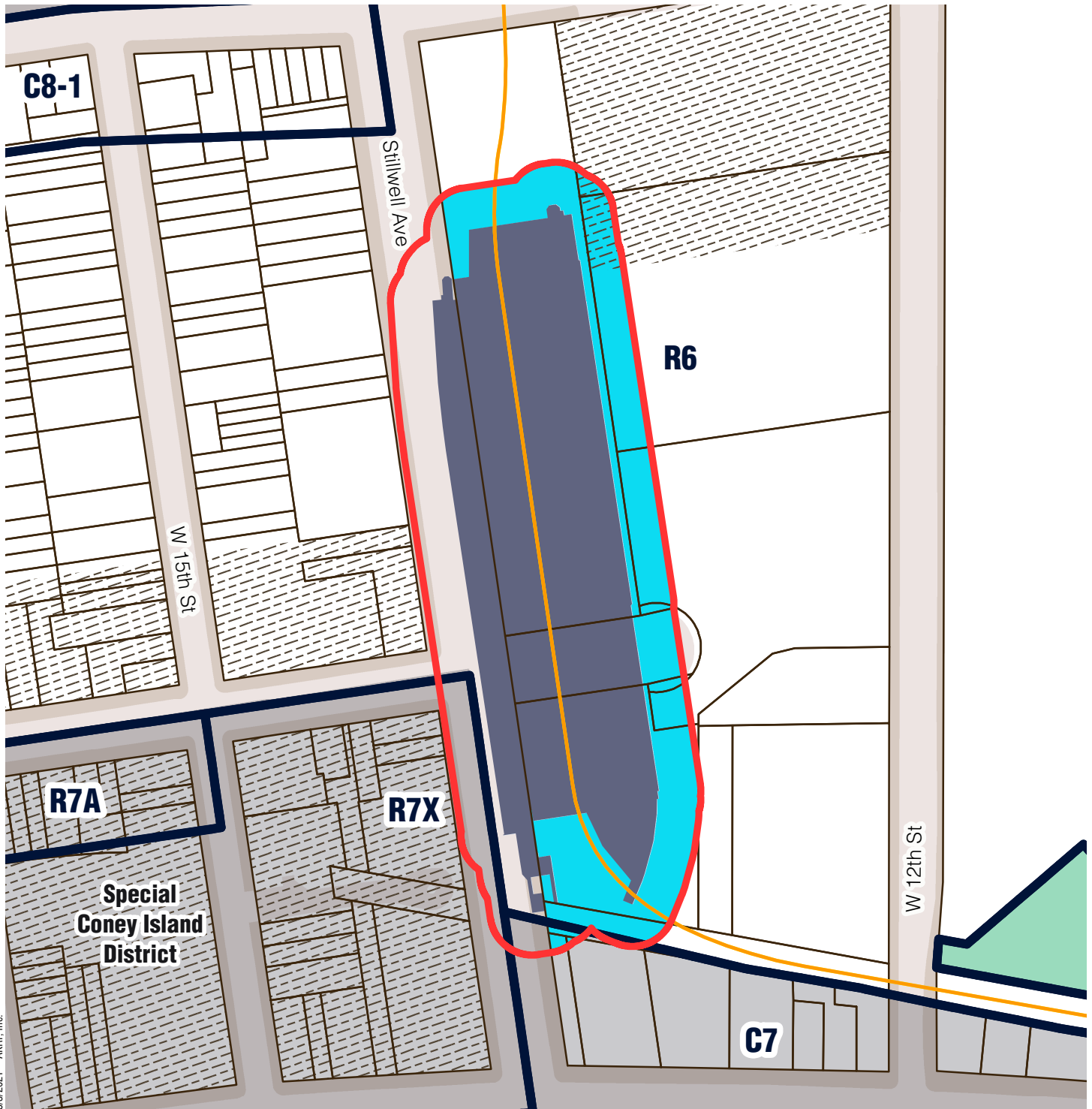
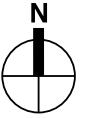


Sources/ Notes  
DCP, MapPLUTO/GIS Zoning  
Features MTA, GIS Station Areas




Station outline and area of  
applicability are approximate.

# Brooklyn Community District 13




Coney Island - Stillwell Av (D, F, N, Q)




5/3/2021 - AKRF, Inc.

-  Station Envelope
-  Zoning Districts
-  Commercial Overlay
-  Park
-  Special District

### Proposed Easement Provisions

-  50-Foot Easement Area
-  Applicable Zoning District
-  Non-Applicable Zoning District

0 200 Feet

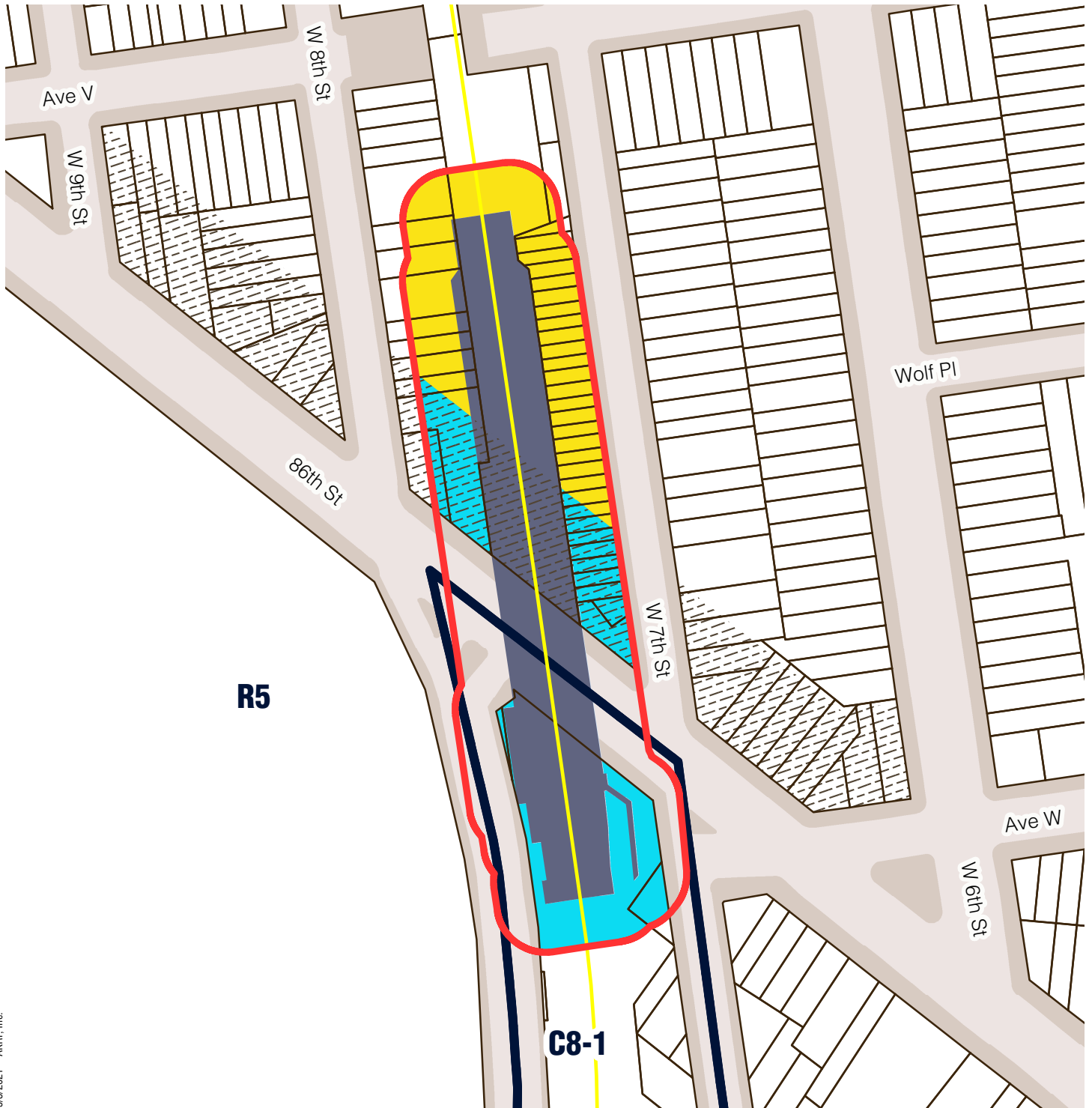
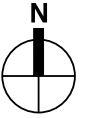


Sources/ Notes  
DCP, MapPLUTO/GIS Zoning  
Features MTA, GIS Station Areas




Station outline and area of  
applicability are approximate.

# Brooklyn Community District 13




## 86 St (N)



5/3/2021 - AKRF, Inc.

-  Station Envelope
-  Zoning Districts
-  Commerical Overlay

### Proposed Easement Provisions

-  50-Foot Easement Area
-  Applicable Zoning District
-  Non-Applicable Zoning District

0 200 Feet

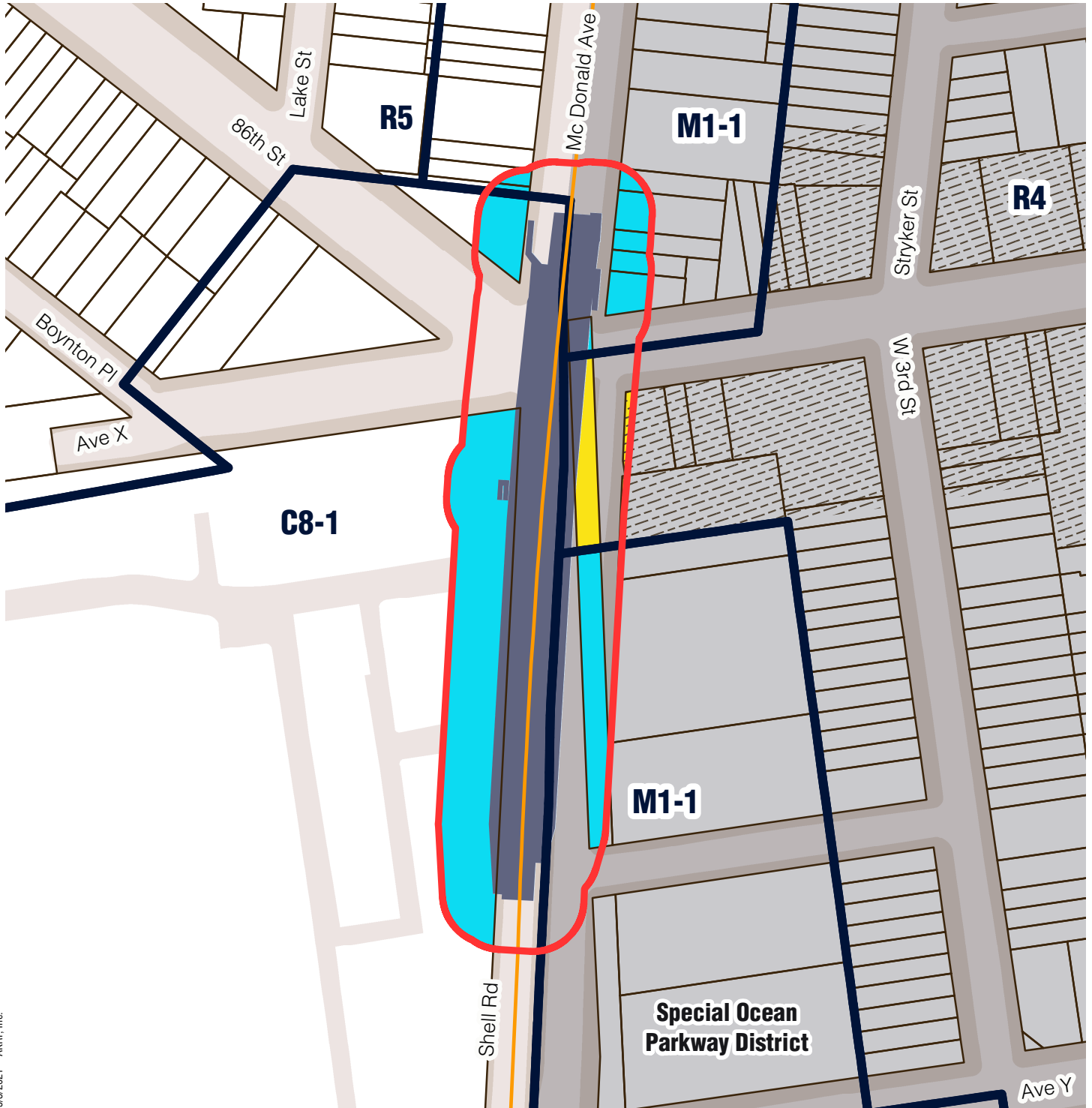
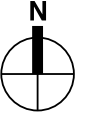


Sources/ Notes  
DCP, MapPLUTO/GIS Zoning  
Features MTA, GIS Station Areas

Station outline and area of  
applicability are approximate.

# Brooklyn Community District 13




## Avenue X (F)



5/3/2021 - AKRF, Inc.

-  Station Envelope
-  Zoning Districts
-  Commercial Overlay
-  Special District

### Proposed Easement Provisions

-  50-Foot Easement Area
-  Applicable Zoning District
-  Non-Applicable Zoning District

0 200 Feet



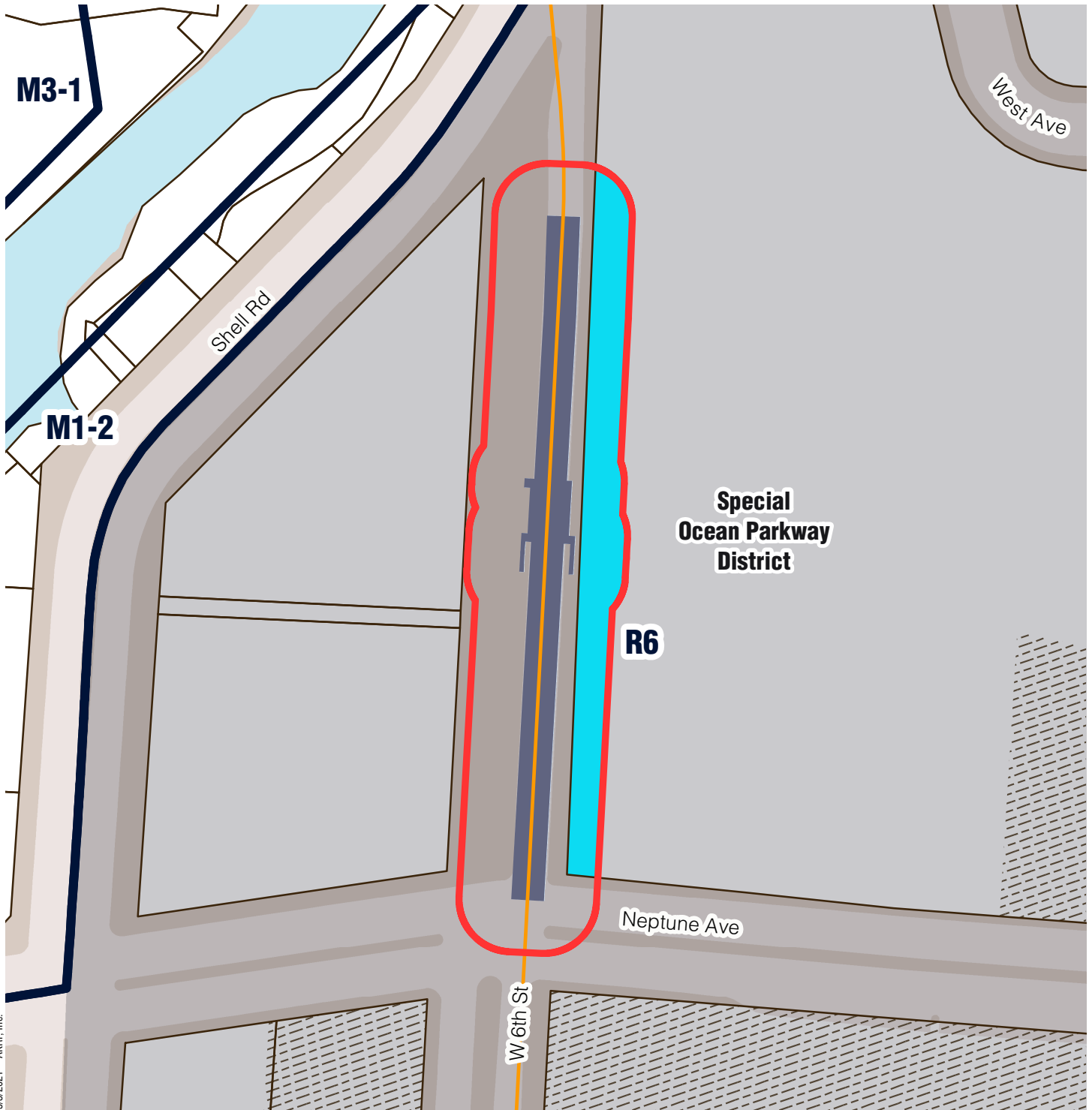
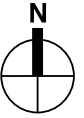
Sources/ Notes  
DCP, MapPLUTO/GIS Zoning  
Features MTA, GIS Station Areas

Station outline and area of  
applicability are approximate.



# Brooklyn Community District 13




Neptune Av (F)




5/3/2021 - AKRF, Inc.

-  Station Envelope
-  Zoning Districts
-  Commercial Overlay
-  Special District

## Proposed Easement Provisions

-  50-Foot Easement Area
-  Applicable Zoning District
-  Non-Applicable Zoning District

0 150 Feet

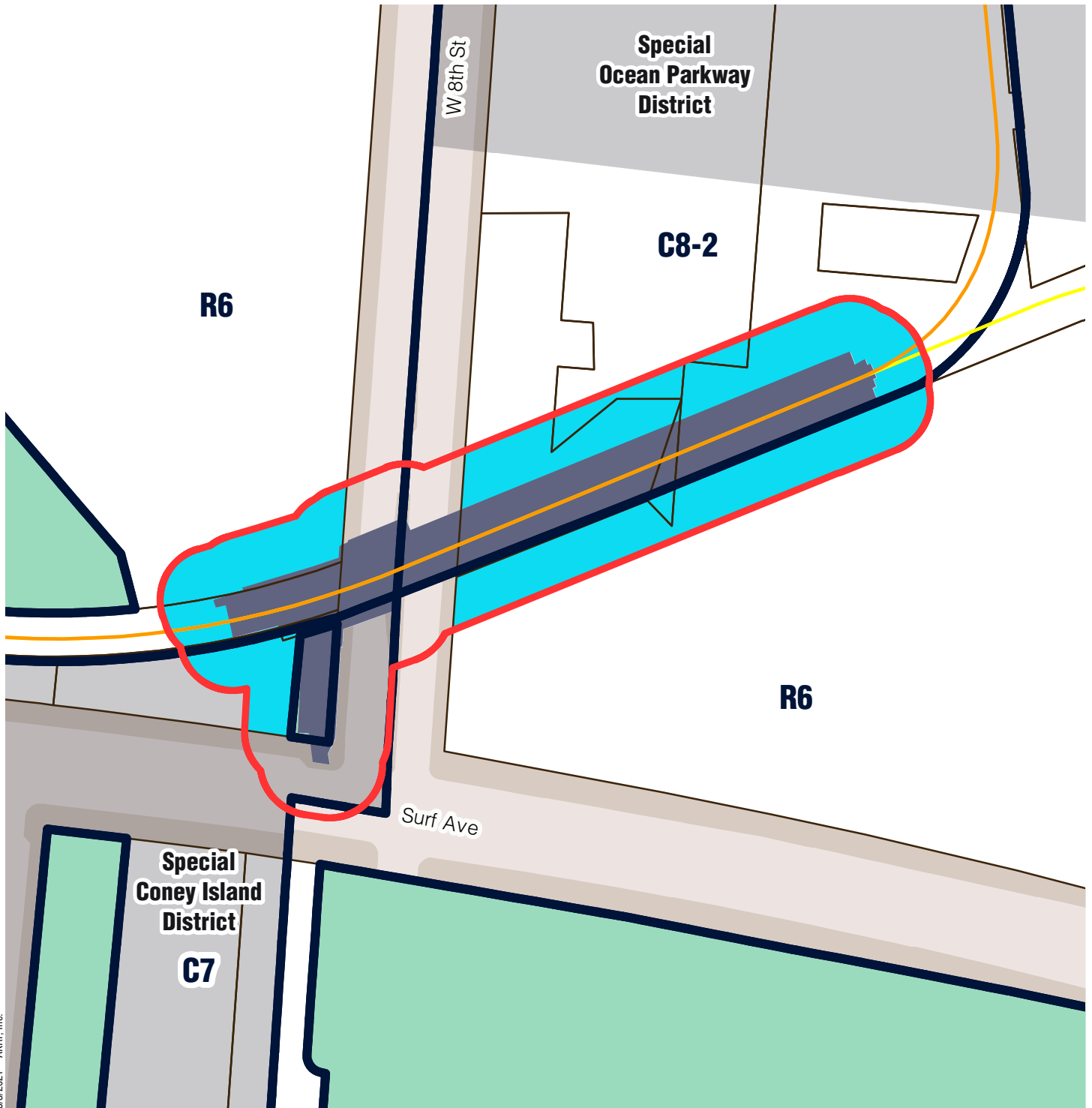


Sources/ Notes  
DCP, MapPLUTO/GIS Zoning  
Features MTA, GIS Station Areas





Station outline and area of  
applicability are approximate.

# Brooklyn Community District 13




## W 8 St - NY Aquarium (F, Q)




5/3/2021 - AKRF, Inc.

-  Station Envelope
-  Zoning Districts
-  Park
-  Special District

### Proposed Easement Provisions

-  50-Foot Easement Area
-  Applicable Zoning District
-  Non-Applicable Zoning District

0 150 Feet



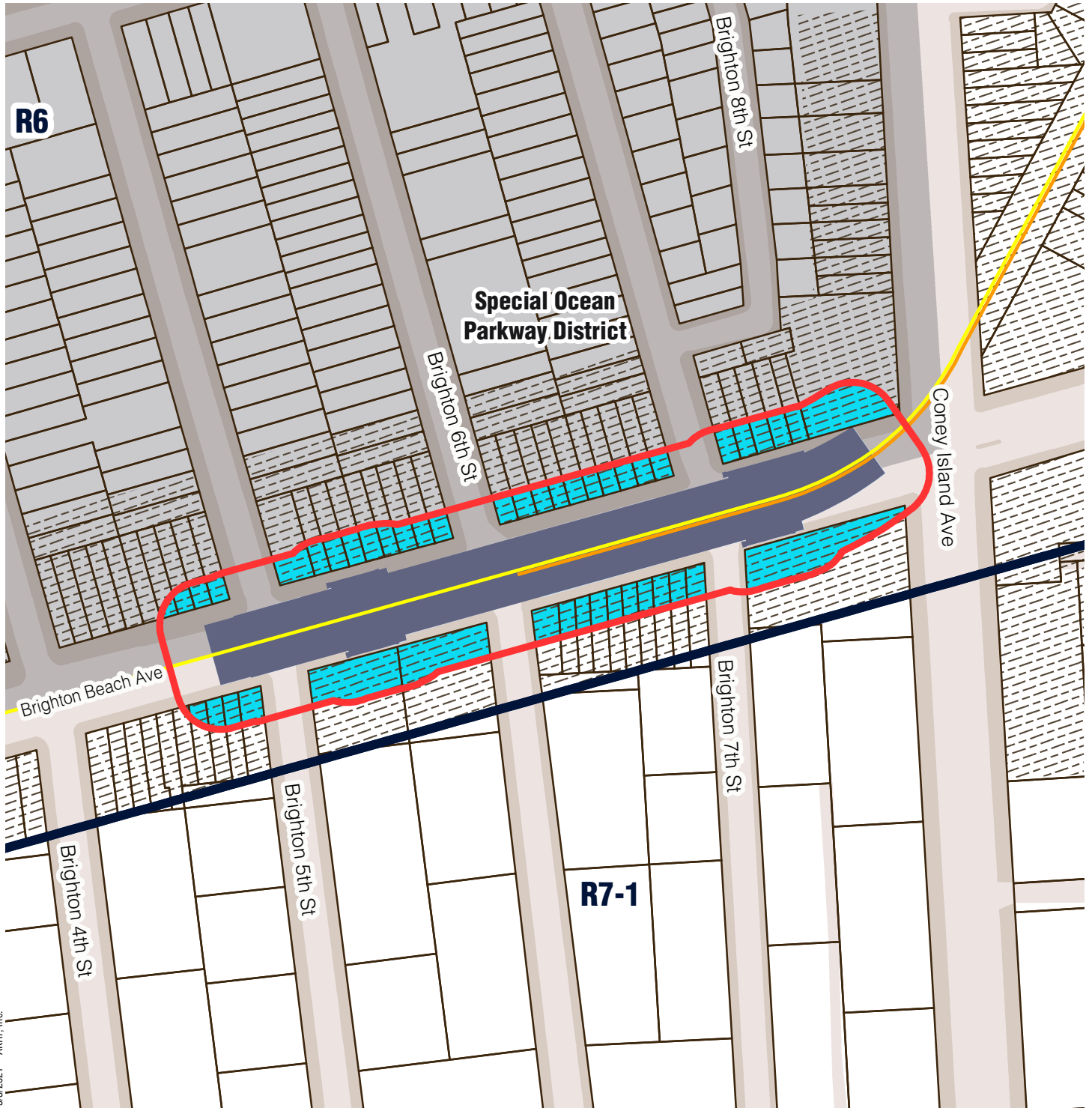
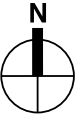
Sources/ Notes  
DCP, MapPLUTO/GIS Zoning  
Features MTA, GIS Station Areas

Station outline and area of  
applicability are approximate.






# Brooklyn Community District 13

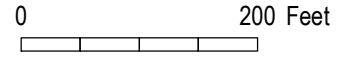
Brighton Beach (B, Q)



5/3/2021 - AKRF, Inc.

-  Station Envelope
-  Zoning Districts
-  Commercial Overlay
-  Special District

- Proposed Easement Provisions**
-  50-Foot Easement Area
  -  Applicable Zoning District
  -  Non-Applicable Zoning District

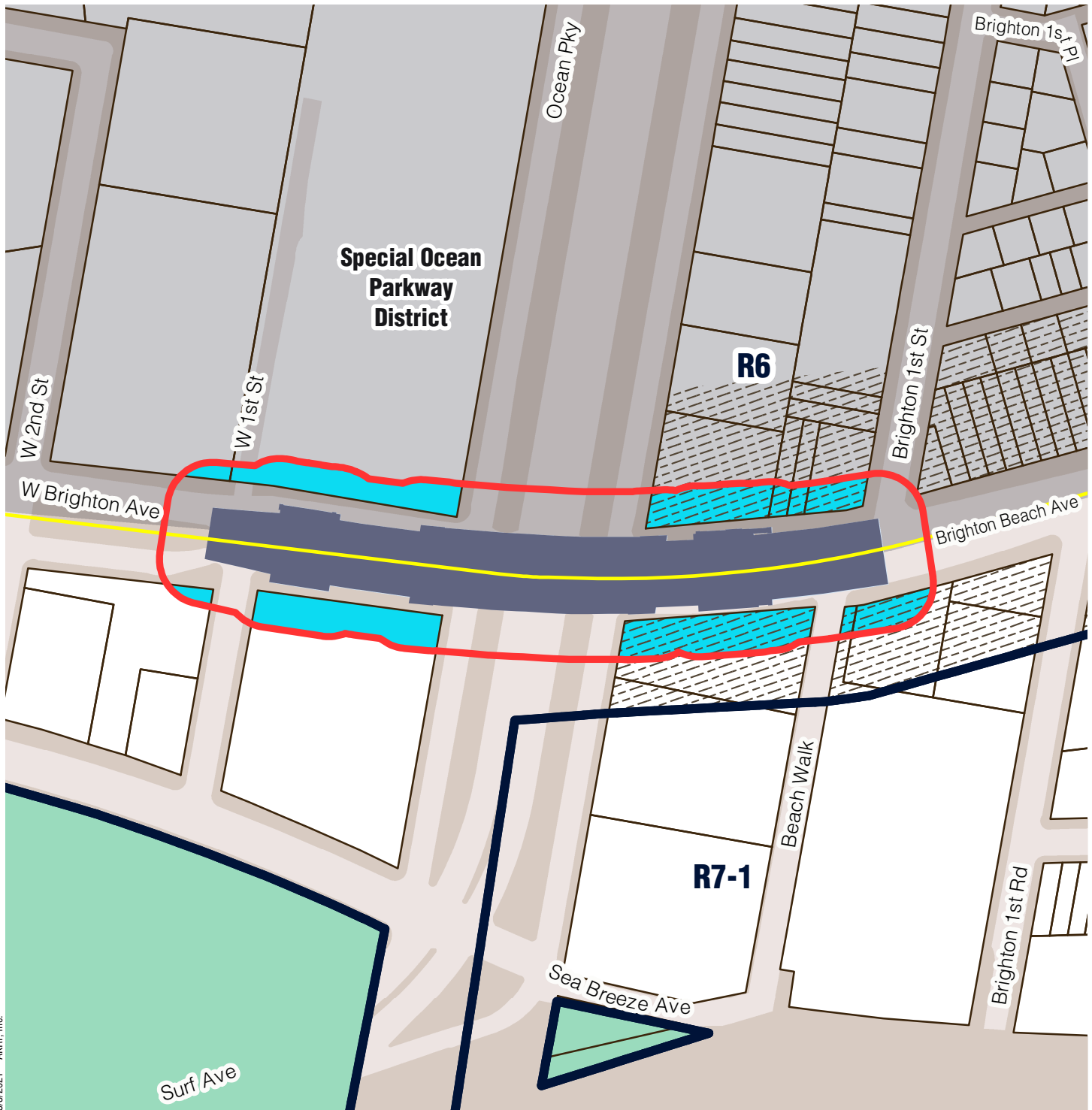
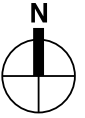


Sources/ Notes  
 DCP, MapPLUTO/GIS Zoning  
 Features MTA, GIS Station Areas






Station outline and area of  
 applicability are approximate.

# Brooklyn Community District 13




## Ocean Pkwy (Q)




5/3/2021 - AKRF, Inc.

-  Station Envelope
-  Zoning Districts
-  Commerical Overlay
-  Park
-  Special District

### Proposed Easement Provisions

-  50-Foot Easement Area
-  Applicable Zoning District
-  Non-Applicable Zoning District

0 200 Feet



Sources/ Notes  
DCP, MapPLUTO/GIS Zoning Features MTA, GIS Station Areas

Station outline and area of applicability are approximate.