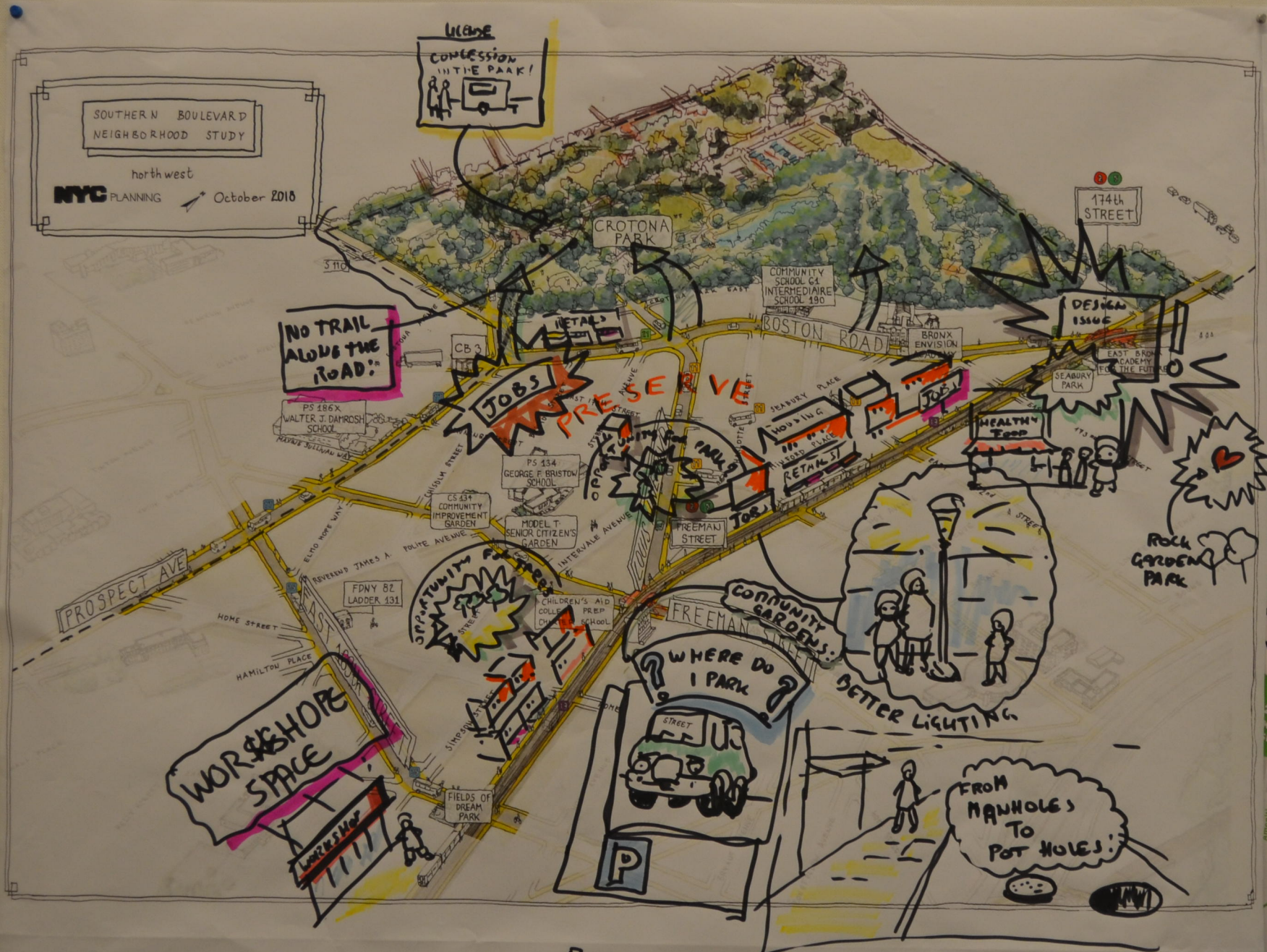
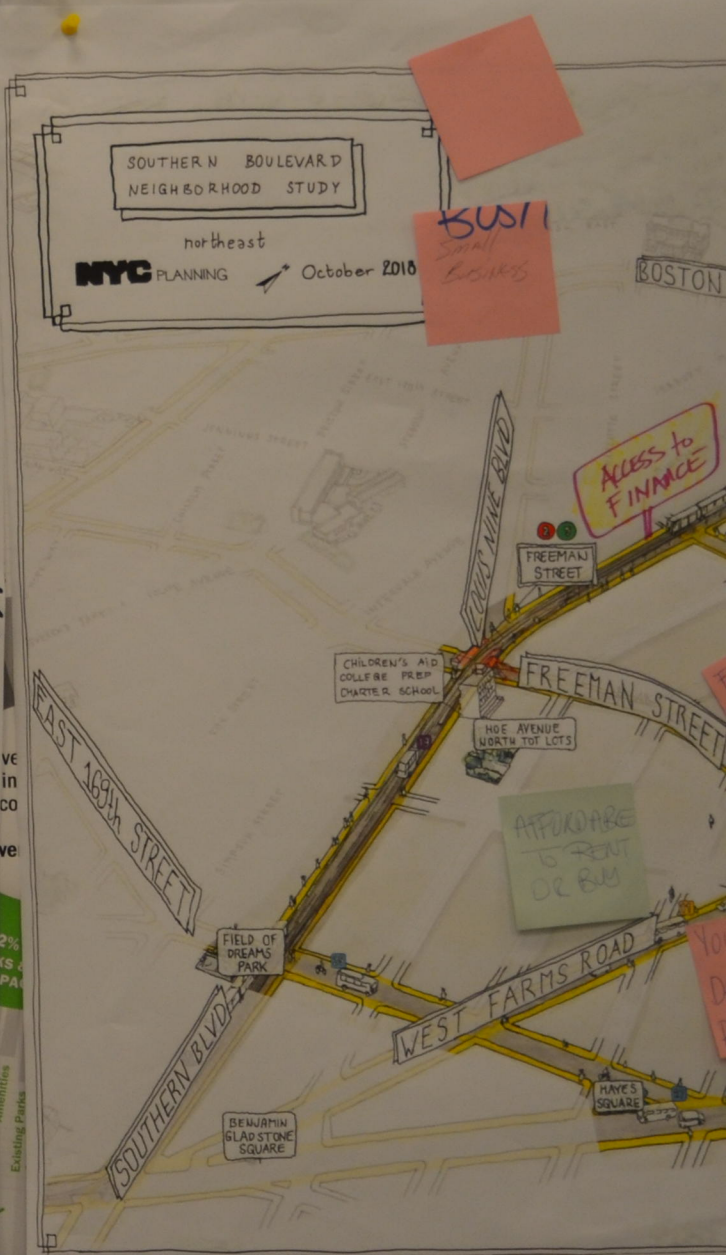


New York City  
A City of Neighborhoods



**HOUSING "2" EVERYWHERE**



**SUSHI**  
small  
601485

As Pla Bro fes are liste leat abo DCI to if to th insig map

SOUTHERN BOULEVARD  
NEIGHBORHOOD STUDY

northeast  
NYC PLANNING October 2018

BUSINESS  
Small  
BUSINESS

CROTONA  
PARK

BOSTON ROAD

174th STREET

CROSS-BRONX EXPRESSWAY

BRONX ENVISION ACADEMY

EAST BRONX ACADEMY FOR THE FUTURE

ANGIE LEE GONZALES GARDEN

EAE J. MITCHELL PARK

PS 50 FAIRMONT NEIGHBORHOOD SCHOOL

ROCK GARDEN PARK

MORE PROGRAM

EAST 174th STREET

ACCESS TO FINANCE

FREEMAN STREET

Families + Elders

SAFE X-ING

CHILDREN'S AID COLLEGE PREP CHARTER SCHOOL

FREEMAN STREET

PS 66 SCHOOL OF HIGHER EXPECTATIONS

STARLIGHT PARK

AFFORDABLE TO RENT OR BUY

HOE AVENUE NORTH TOT LOTS

PS X844

FANNIE LOU HAMER SCHOOL

River Access  
Easier Access to the Bronx River

Youth Development Programs

Play

TRAIN TOO LOUD  
Buses need investment.

FREEMAN TRIANGLE

DANIEL BOONE PARK

FIELD OF DREAMS PARK

WEST FARMS ROAD

WHITLOCK AVENUE

BRONX RIVER AVE

HAYES SQUARE

BENJAMIN GLADSTONE SQUARE



new  
USB =

SOUTHERN BOULEVARD  
NEIGHBORHOOD STUDY  
northeast  
NYC PLANNING  
October 2018

CROTONA PARK

BOSTON ROAD

174th STREET

CROSS-BRONX EXPRESSWAY

BRONX ENVISION ACADEMY

EAST BRONX ACADEMY FOR THE FUTURE

ANGIE LEE GONZALES GARDEN

EAE J. MITCHELL PARK

PS 50 FAIRMONT NEIGHBORHOOD SCHOOL

ROCK GARDEN PARK

EAST 174th STREET

FREEMAN STREET

CHILDREN'S AID COLLEGE PREP CHARTER SCHOOL

FREEMAN STREET

HOE AVENUE NORTH TOT LOTS

OPORTUNIDAD  
PARQUES

PS 66 SCHOOL OF HIGHER EXPECTATIONS

MARIE LOU WAMER SCHOOL

STARLIGHT PARK

PS X 811

FREEMAN TRIANGLE

DANIEL BOONE PARK

FIELD OF DREAMS PARK

WEST FARMS ROAD

WHITLOCK AVENUE

HAYES SQUARE

BENJAMIN GLADSTONE SQUARE

BRONX RIVER AVE



vel  
ind  
cor  
si  
nem

2%  
KS &  
SPAC

for

SOUTHERN BOULEVARD  
NEIGHBORHOOD STUDY  
southeast  
NYC PLANNING October 2018

PRESEVNE AFFORDABLE  
ACCESS HEALTH  
CITY-OWNED SITES?

BUSINESS

ACCESS PARK

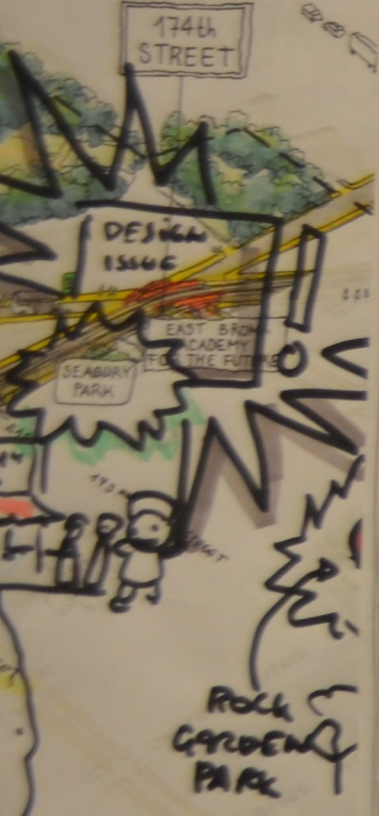
SAFE BIKING

PRESEVNE LOCAL BUSINESS  
SENIOR HOUSING

LAND TRUST

MAINTAIN

SAFE BIKING  
SHERIDAN EXPRESSWAY



SOUTHERN BOULEVARD  
NEIGHBORHOOD STUDY  
southeast  
NYC PLANNING  
October 2018

SMELL +  
LOUD +  
DARK

BETTER  
CONNECTION  
TO PARK.

TRAINS  
ARE  
OVERCROWDED.

SANITATION

Pick up  
GARBAGE  
ON  
SOUTHEAST

PRESERVE  
N/E/ S/B on HOV  
CHARACTER

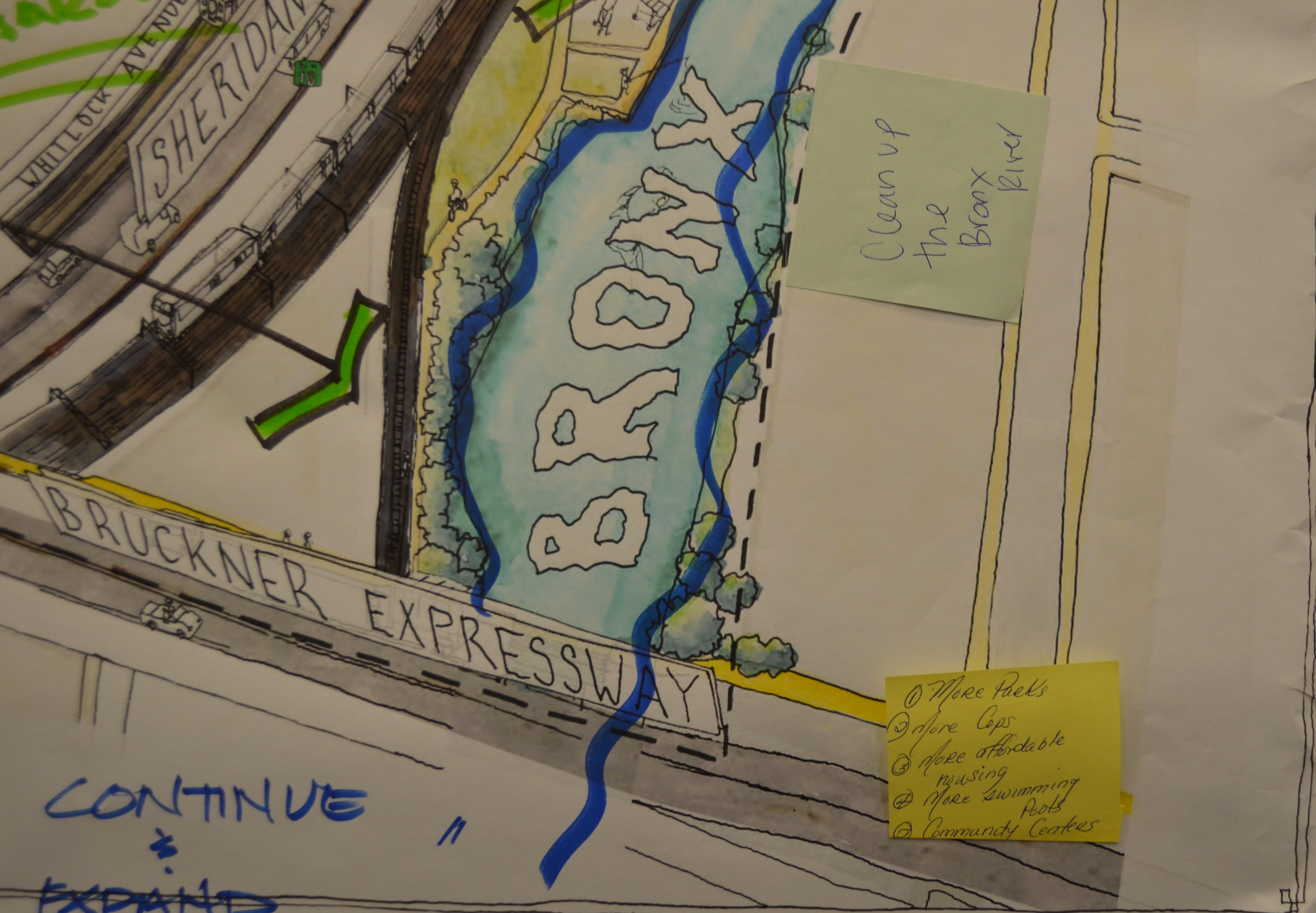
RICH  
STREET  
LIFE  
INFORMAL  
GATHERING

MORE  
GARDENS

Clean up  
the  
Bronx  
River

CONTINUE  
EXPAND  
CLEAN-UP  
OF BRONX  
RIVER.

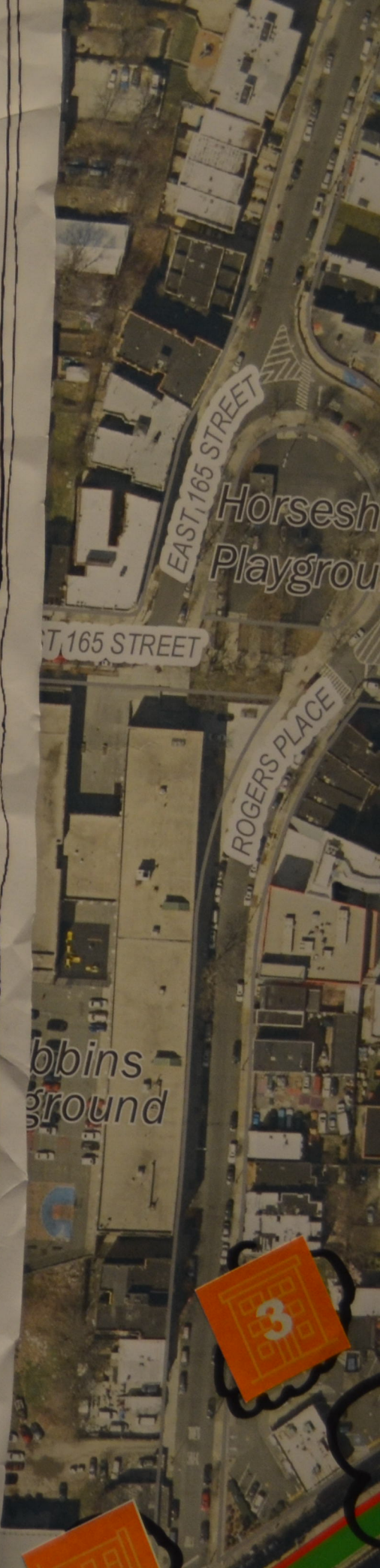




Clean up  
the  
Bronx  
River

- ① More Parks
- ② More Cops
- ③ More affordable housing
- ④ More swimming Pools
- ⑤ Community Centers

CONTINUE  
= EXPAND  
CLEAN-UP  
OF BRONX



3

SOUTHERN BOULEVARD  
NEIGHBORHOOD STUDY

NYC PLANNING October 2018

174th STREET

southeast

PRESERVE AFFORDABLE CITY-OWNED SITES?

ACCESS HEALTH

BUSINESS

COMMUNITY CTR.

SAFE BIKING

PRESERVE LOCAL BUSINESS

EL NUEVO SAN JUAN HEALTH CENTER

BENJAMIN GLADSTONE SQUARE

LAND TRUST

MAINTAIN

ACCESS PARK

CONCRETE PLANT PARK

SENIOR HOUSING

PRINTERS PARK

LYONS SQUARE PLAYGROUND

LONGFELLOW GARDEN

HOE GARDEN

ELEMENTARY SCHOOL 75

MILDRED T. RHODEBECK GARDEN

SAFE BIKING

SHERIDAN EXPRESSWAY

BRUCKNER BLVD

HUNTS POINT AVENUE

HOE AVENUE

ALDUS STREET

FAILE STREET

BRYANT AVENUE

LONGFELLOW AVENUE

WHITLOCK AVENUE

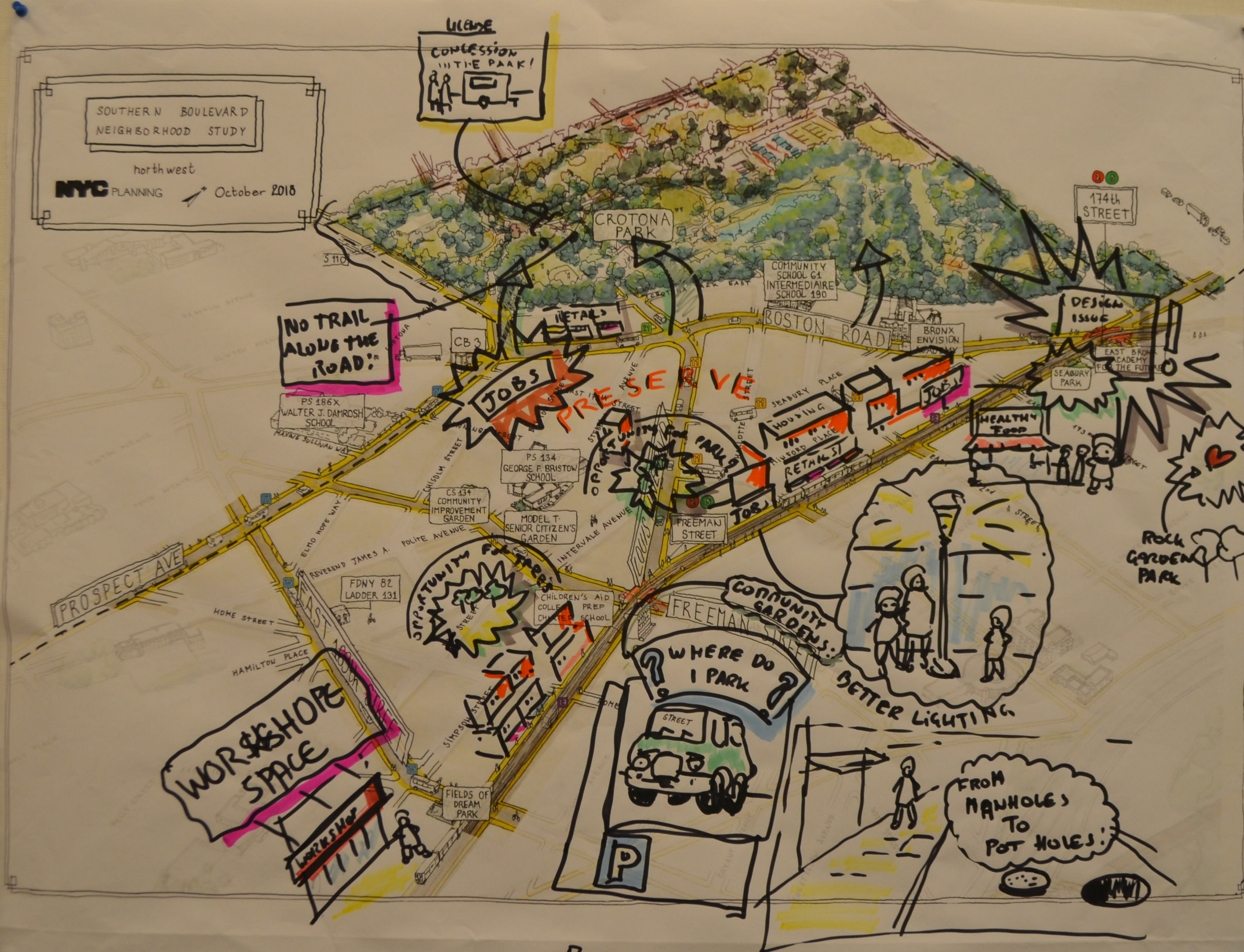
SHERIDAN EXPRESSWAY

DESIGN 1566

ROCK GARDEN PARK



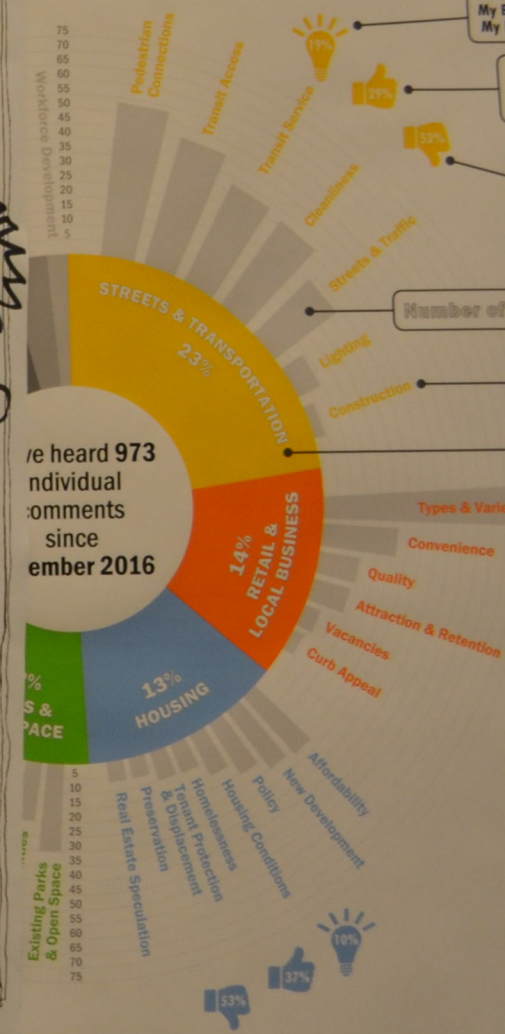
# New York City Neighborhoods



## SOUTHERN BOULEVARD NEIGHBORHOOD STUDY

### NPUT SNAPSHOT

ing from the communities around Southern Boulevard  
d plan, what major challenges are in the area, and h  
communities.



**HOUSING "2" EVERYWHERE**

om?

As recommended by the Planning Partners, DCP Bronx went to events and festivals in the communities around Southern Boulevard listening, engaging, and learning from residents about their neighborhoods. DCP had the opportunity to introduce stakeholders to the study and gain local insight through visioning and mapping exercises.

**Small Group 13%**

- Banana Kelly Resident Leadership Meeting
- Casa Boruca Senior Center
- Southern Boulevard BID
- Familie Lou Hamer Freedom HS PTA Meeting
- Planning Partners Meeting #1: Public

As recommen  
the Planning  
DCP Bronx en  
small group m  
with a variety  
community gr  
to meet reside  
stakeholders  
are. These ran  
broad to very  
conversations  
opportunity fo  
to shape the p



New York City  
neighborhoods



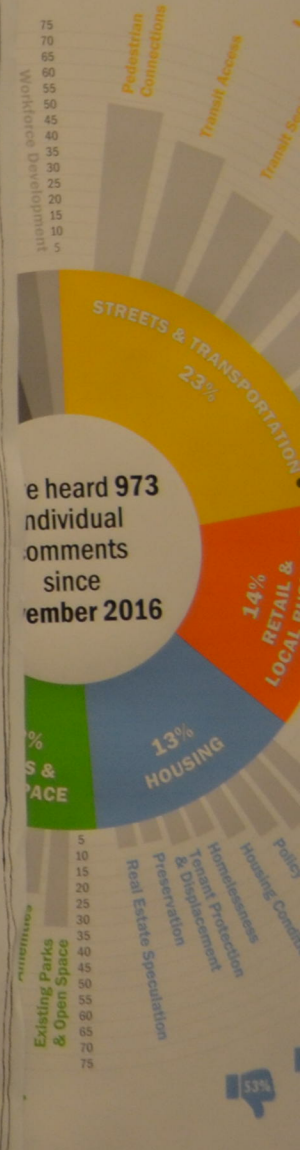
SOUTHERN BOULEVARD  
NEIGHBORHOOD STUDY

southwest

NYC PLANNING October 2018

SOUTHERN BOULEVARD  
NEIGHBORHOOD STUDY  
INPUT SUMMARY

Learning from the communities around the neighborhood and plan, what major challenges do you see for the communities.



As recommended by the Planning Partners, DCP Bronx went to events and festivals in the communities around Southern Boulevard listening, engaging, and learning from residents about their neighborhoods. DCP had the opportunity

# York City ighborhoods

SOUTHERN BOULEVARD  
NEIGHBORHOOD STUDY

southwest  
NYC PLANNING  
October 2018



improve lighting under the EL!  
DAWSON STREET

improve lighting under the EL!  
HOME STREET

CAPITALIZE ON TRANSIT ADJACENCY WITH RETAIL & JOB TRAINING

COULD WESTCHESTER ACCOMMODATE A BIKE LANE?

Make it safer to cross this intersection

ACTIVATE WESTCHESTER WITH A VARIETY OF RETAIL OPTIONS

OPPORTUNITIES TO SIT & STAY ALONG SOUTHERN BOULEVARD

MAINTAIN THE CULTURAL TRAIL

CASA MARIA

Where do these comments come from?

SOU  
NEI  
NPU

ring from  
od plan, v  
communi

75  
70  
65  
60  
55  
50  
45  
40  
35  
30  
25  
20  
15  
10  
5

Workforce Development

ve heard  
individu  
ommer  
since  
ember

2%  
S &  
PACE

5  
10  
15  
20  
25  
30  
35  
40  
45  
50  
55  
60  
65  
70  
75

Existing Parks & Open Space

As recom  
Planni



DANGEROUS AT NIGHT

Crotona Park

174 St

CROSS LIGHTS

INCUBATORS + SHARED SPACE

OSBORNE +

TRADES + PARTNER W/ WIN

HOUSING + SOUTHERN

WIFI = LINK NYC

HOUSING + VACANT

R1

Freeman St

CLEAN + GREEN

HOUSING + SOUTHERN

SAFETY

S N  
GHBC

of new  
uses =

# New HSB = Services

Truly Affordable BASED on incomes

BRO-HC  
eman St

All streets

ALL OF WASTECHE

All over

Netemiah Homes



# New  
MSB =  
Seniors

Truly Affordable  
BASED on income

BMHC  
eman St

Rev J Polite  
Playground

Field  
Of Dreams  
Park

Benjamin  
Gladstone  
Square

All streets

Tiffany  
Playground

Simpson St

Printer's  
Park

Horseshoe  
Playground

Stebbins  
Playground

Intervale

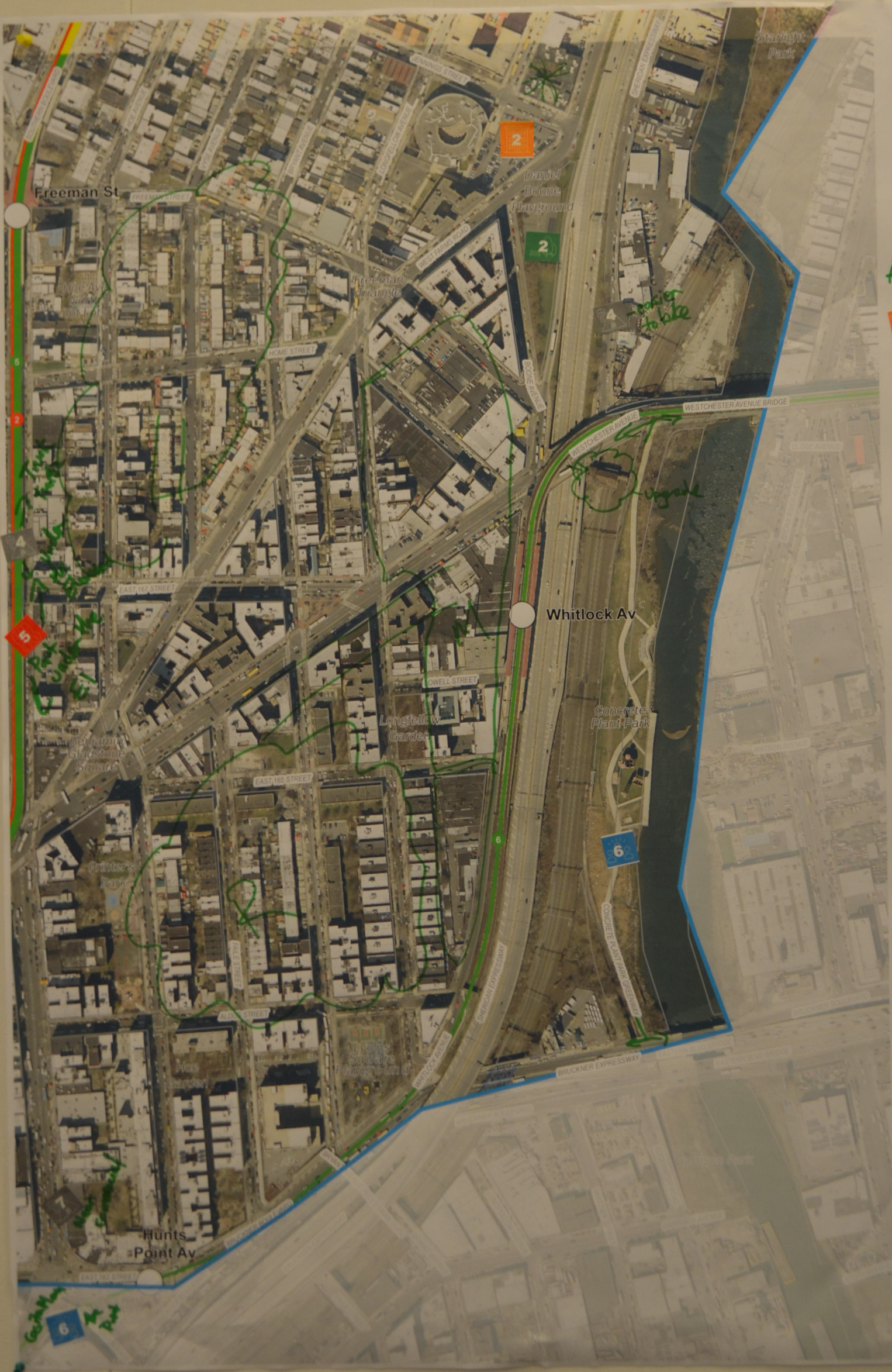
ALL OF WASHCREEK

Hunts  
Point Av

All over

NEHEMIAH  
HOMES





Applies Area-wide

- 7 - City owned property & nonprofits
- for seniors



MAS Seguridad en el Vecindario  
Municipalidad 1821  
Municipalidad PUE

la longitud de la calle  
Norte ↗

FUTBOL

Punto de Encuentro

Parques TODOS

Salud

La Calle  
Muy estrecha

Seguridad  
Zonas  
Tropicales

WILMA  
EST

DRISSEN



Feel of Community

Feel of Community

100 Tribes West African Community

Need Dock for Fishing

Access to Hospitals

HP - Lots of Activity

Sense of Community

RC Park

HP Park

Bike

HP





RICH  
Cultural  
History

R1

Freeman St

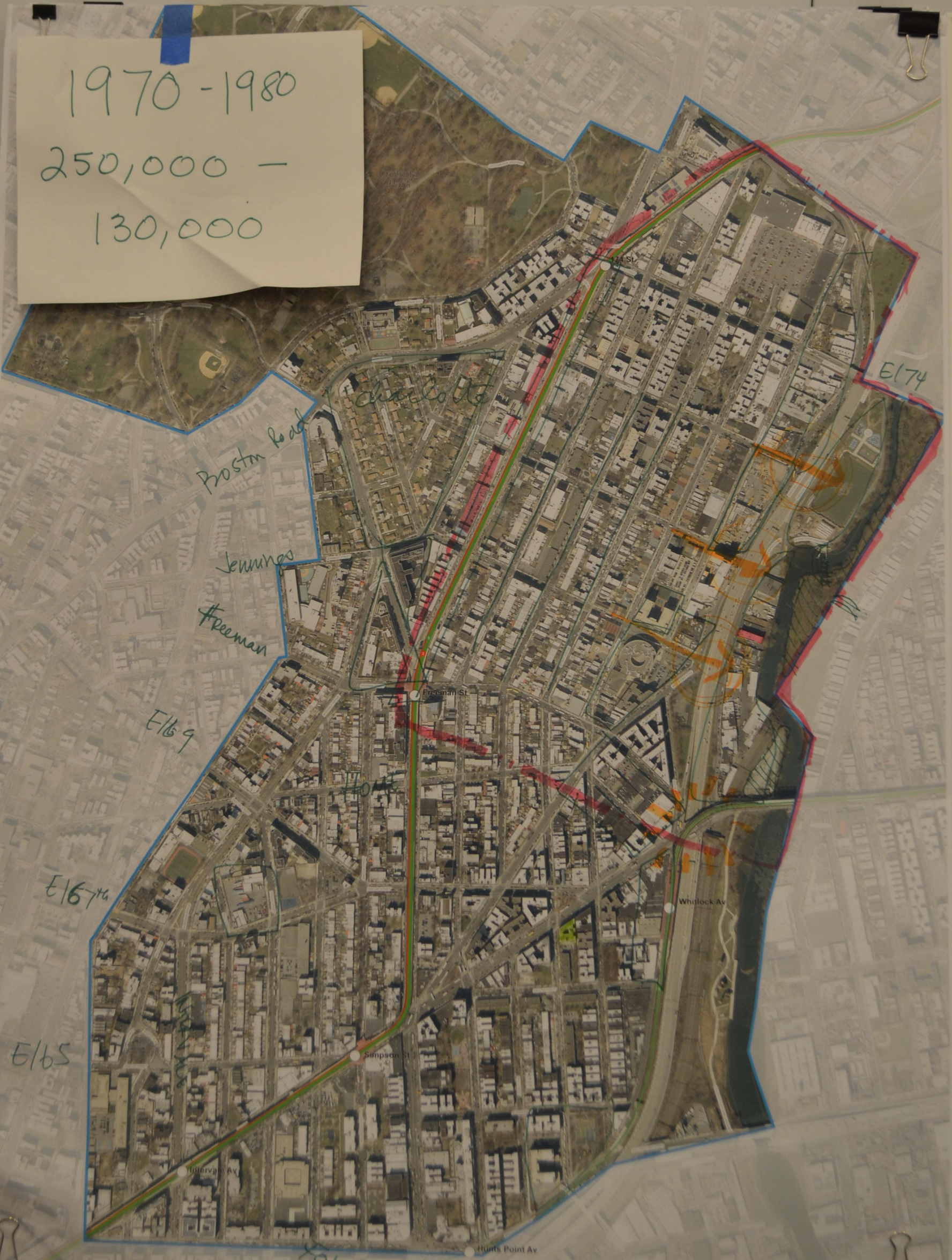
Whitlock Av

Simpson St

Hunts Point Av

Intervale Av

1970-1980  
250,000 -  
130,000





Bike paths need improvement

USE CEOTOMA PARK

MORE HEALTH WORKSHOPS

"sit down" BASKETBALL

Loggins

"I go out of neighborhood for HEALTH -> Lincoln Hospital"

UNP Emergency

HEALTHY options show EXIST

\* Connections

Feeding

\* Connections

FARMERS Mkt - good at Walter Kows

Community GARDEN

\* concerts/ comedians HAPPEN HERE

BX 11, 5, 19

DOR

FARMERS Mkt