

SOUTHERN BOULEVARD NEIGHBORHOOD STUDY



NEIGHBORHOOD OVERVIEW WHAT IS IN THE NEIGHBORHOOD

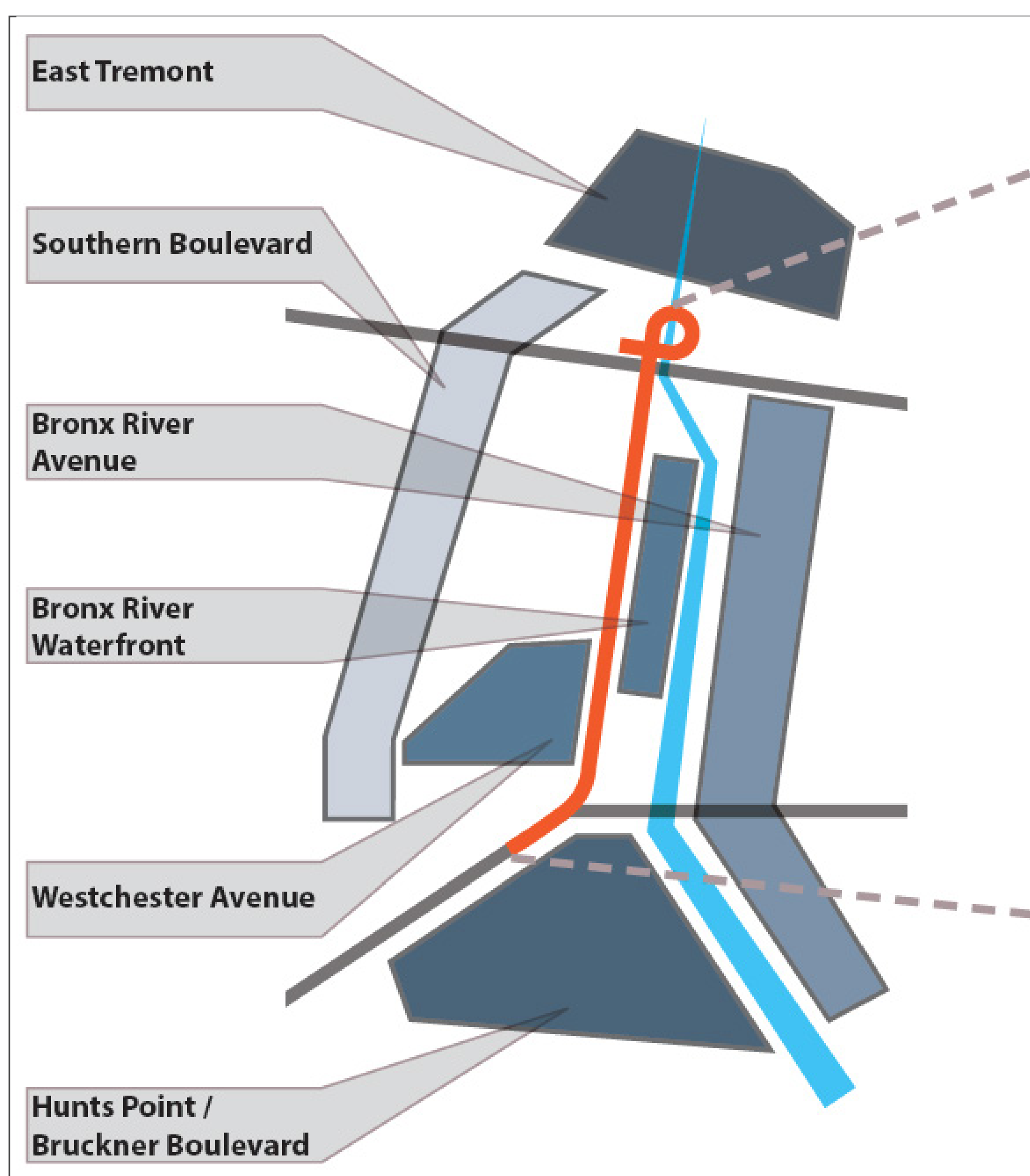
- Points of interest
- Schools
- Services
- Commercial



WHY STUDY SOUTHERN BLVD?

Continue Planning from Sheridan Expressway – Hunts Point Land Use and Transportation Study

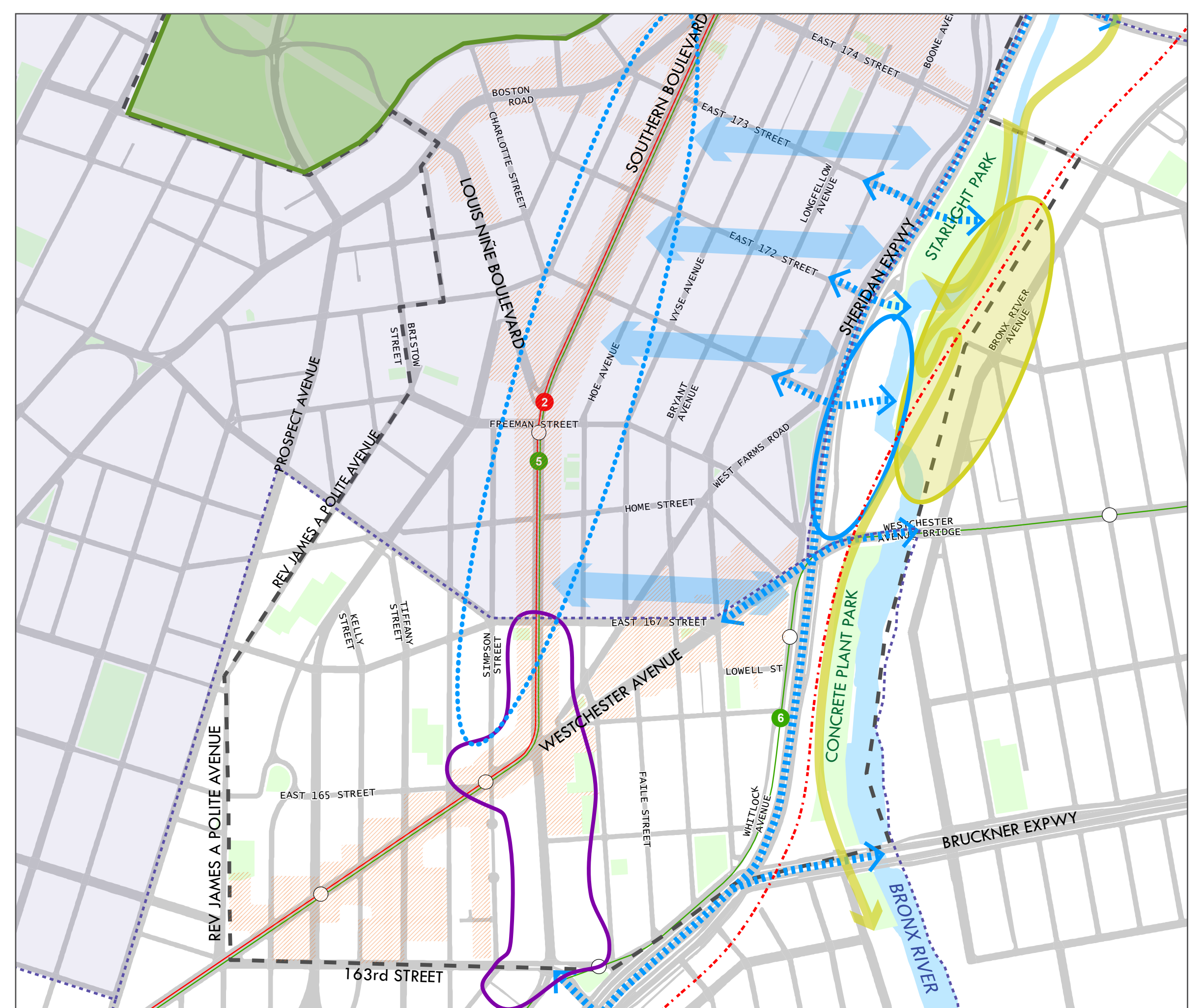
As part of the **decades-long community-led movement** to reconnect neighborhoods to the Bronx River waterfront, from 2010-2013, agencies worked with local stakeholders on a study of the Sheridan Expressway. Through that process, stakeholders agreed that the areas around Southern Boulevard, other key corridors, and the Bronx River waterfront deserved a **more detailed plan** that looks beyond the expressway.



Diagrammatic neighborhood recommendations from the Sheridan Expressway study

Tie together Multiple Plans and create a unified vision

The community organizations and residents of Crotona Park East, Longwood, Charlotte Gardens, Southern Boulevard and Bronx River **have long been engaged in local planning**. The Southern Boulevard Neighborhood Study is an **opportunity to tie together these many plans and diverse work of the community and set a unified vision for the future**.



Preserve Assets and Address Challenges



The study will **support the many assets** around Southern Boulevard, especially the people, culture, and music heritage and help address long-term challenges including health, safety, poverty, vacant storefronts, and limited access to parks, jobs, and community services. The city is changing – populations are growing, rents are rising, infrastructure is aging - and **the planning process will provide a way to affect those changes for the betterment of the neighborhood**.

Build Consensus and Focus Resources

A neighborhood study provides an **opportunity for neighbors and city agencies to develop a plan for the future together**. An effective neighborhood plan allows community members to prioritize needs and advocate to ensure the city is making **the right investments in their neighborhoods**. The study is an opportunity to **build consensus across the area, coordinate agency responses, and prioritize capital investments**.

SOUTHERN BOULEVARD NEIGHBORHOOD STUDY



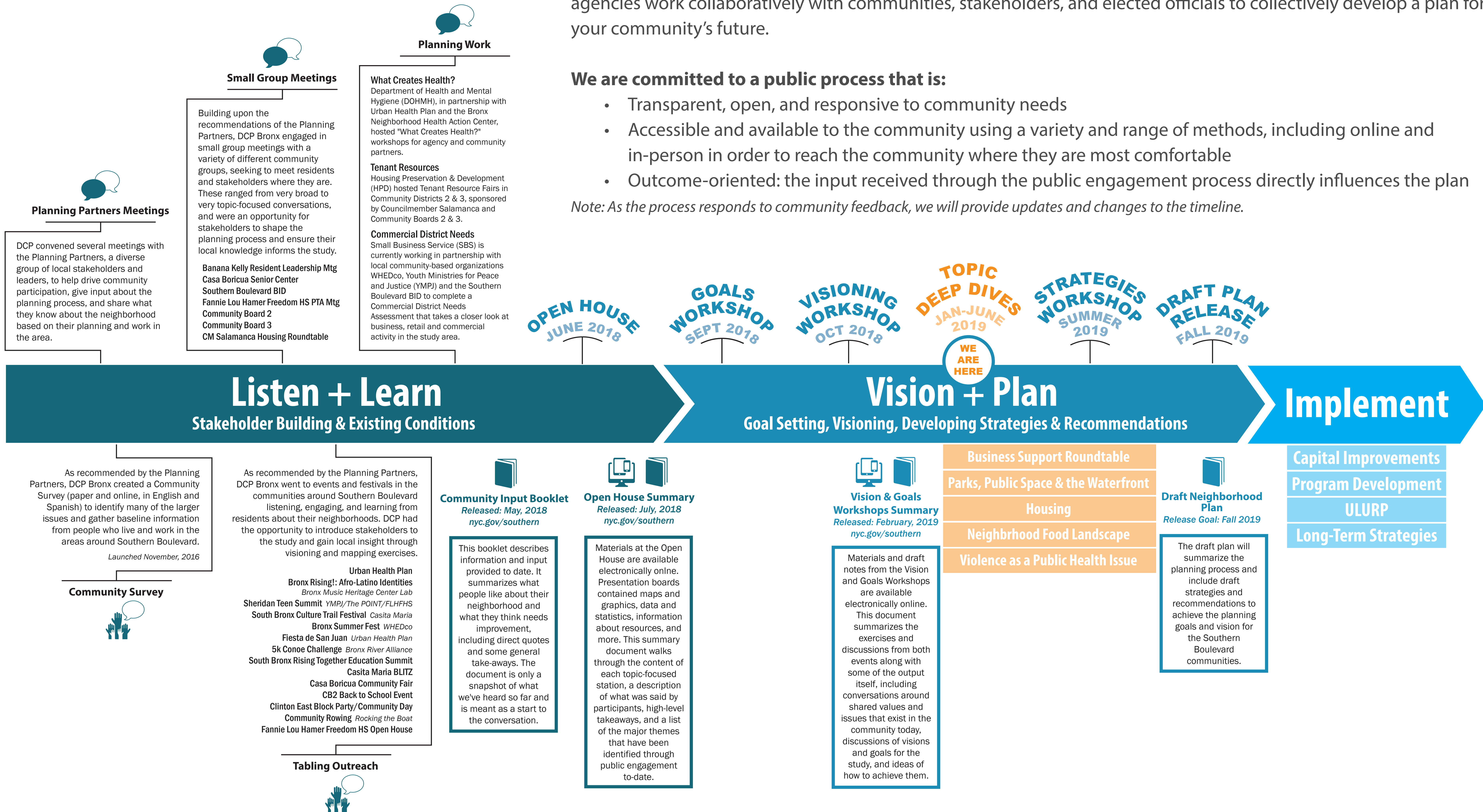
STUDY PROCESS & TIMELINE

The Southern Boulevard Neighborhood Study is a comprehensive planning approach in which DCP and other agencies work collaboratively with communities, stakeholders, and elected officials to collectively develop a plan for your community's future.

We are committed to a public process that is:

- Transparent, open, and responsive to community needs
- Accessible and available to the community using a variety and range of methods, including online and in-person in order to reach the community where they are most comfortable
- Outcome-oriented: the input received through the public engagement process directly influences the plan

Note: As the process responds to community feedback, we will provide updates and changes to the timeline.



WHAT'S IN A PLAN?

WHAT ARE THE POTENTIAL ELEMENTS OF A PLAN?



	HEALTH, HUMAN SERVICES & WELL-BEING		PARKS & OPEN SPACE		ARTS & CULTURE
	WALKABILITY & ACCESS		JOBS & BUSINESS		LAND USE & BUILT ENVIRONMENT
	INFRASTRUCTURE & CAPITAL IMPROVEMENTS		HOUSING		EDUCATION/WORKFORCE TRAINING
	NATURAL ENVIRONMENT		COMMUNITY OUTREACH & DEVELOPMENT		

DRAFT VISION

The content and key takeaways from the **Goals Workshop** and **Visioning Workshop**, along with the ongoing community input throughout the multiple years of the study's public engagement has led to the formation of the following **draft vision**, which describes how community stakeholders imagine the ideal future that the implementation of the plan could achieve. The vision will continue to be shaped throughout the next phases of the planning process.

THE NEIGHBORHOODS ALONG SOUTHERN BOULEVARD ARE MADE UP OF STRONG, CULTURALLY-RICH COMMUNITIES WITH PEOPLE OF ALL AGES AND BACKGROUNDS.

ALL ENJOY EQUITABLE ACCESS TO RESOURCES AND OPPORTUNITIES THAT MAXIMIZE A HIGH QUALITY OF LIFE.

THE NEIGHBORHOODS' HISTORY AND CULTURAL ROOTS ARE ALIVE AND THRIVING, AND THE COMMUNITY IS HEALTHY, SAFE, AND CONNECTED.

DRAFT HIGH-LEVEL GOALS

This process also led to the formation of **draft high-level goals** for the study, which describe the specific ways that the plan will help achieve the vision:

- **PRESERVE AND INVEST IN EXISTING COMMUNITY ASSETS**
- **ADDRESS LONGSTANDING HEALTH AND ECONOMIC INEQUITIES IN THE COMMUNITY BY FOCUSING ON ROOT CAUSES**
- **ENSURE THAT THIS IS A GREAT PLACE FOR YOUNG PEOPLE TO GROW UP AND FOR SENIORS TO AGE IN PLACE**
- **CONNECT PEOPLE TO EACH OTHER, RESOURCES, OPPORTUNITIES, AND ASSETS**

Southern Blvd. Neighborhood Study

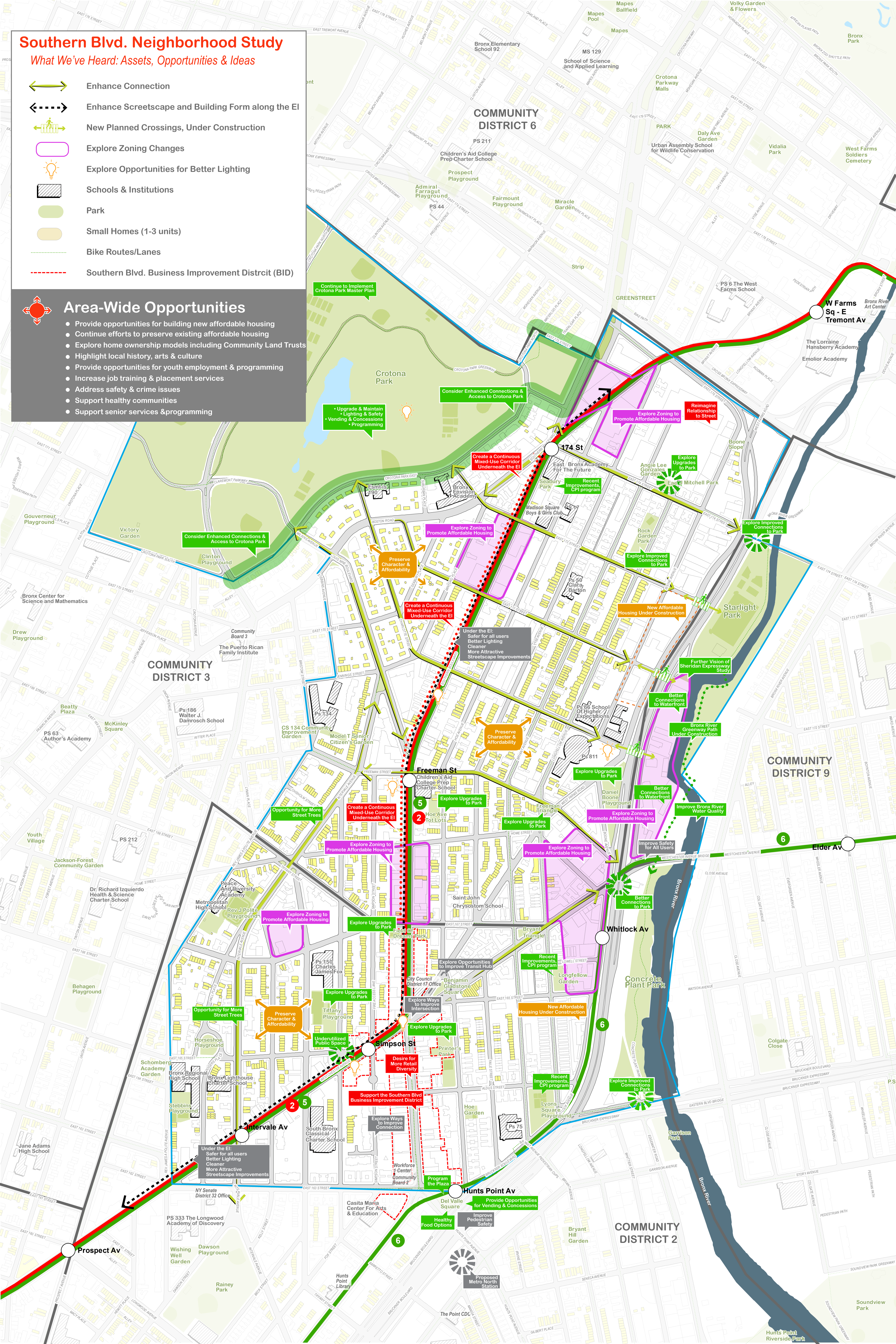
What We've Heard: Assets, Opportunities & Ideas

- Enhance Connection
- Enhance Streetscape and Building Form along the EI
- New Planned Crossings, Under Construction
- Explore Zoning Changes
- Explore Opportunities for Better Lighting
- Schools & Institutions
- Park
- Small Homes (1-3 units)
- Bike Routes/Lanes
- Southern Blvd. Business Improvement District (BID)



Area-Wide Opportunities

- Provide opportunities for building new affordable housing
- Continue efforts to preserve existing affordable housing
- Explore home ownership models including Community Land Trusts
- Highlight local history, arts & culture
- Provide opportunities for youth employment & programming
- Increase job training & placement services
- Address safety & crime issues
- Support healthy communities
- Support senior services & programming



Continue to Implement Crotona Park Master Plan

Upgrade & Maintain Lighting & Safety Vending & Concessions Programming

Consider Enhanced Connections & Access to Crotona Park

Create a Continuous Mixed-Use Corridor Underneath the EI

Explore Zoning to Promote Affordable Housing

Reimagine Relationship to Street

Explore Upgrades to Park

Consider Enhanced Connections & Access to Crotona Park

Preserve Character & Affordability

Create a Continuous Mixed-Use Corridor Underneath the EI

Under the EI: Safer for all users Better Lighting Cleaner More Attractive Streetscape Improvements

Explore Zoning to Promote Affordable Housing

Explore Improved Connections to Park

Explore Improved Connections to Park

Opportunity for More Street Trees

Create a Continuous Mixed-Use Corridor Underneath the EI

Explore Upgrades to Park

Explore Upgrades to Park

Explore Upgrades to Park

Explore Zoning to Promote Affordable Housing

Explore Zoning to Promote Affordable Housing

Explore Zoning to Promote Affordable Housing

Explore Zoning to Promote Affordable Housing

Explore Upgrades to Park

Explore Upgrades to Park

Explore Ways to Improve Transit Hub

Explore Ways to Improve Intersection

Explore Ways to Improve Connection

Explore Zoning to Promote Affordable Housing

Explore Zoning to Promote Affordable Housing

Explore Zoning to Promote Affordable Housing

Under the EI: Safer for all users Better Lighting Cleaner More Attractive Streetscape Improvements

Explore Ways to Improve Connection

Program the Plaza

Provide Opportunities for Vending & Concessions

Improve Pedestrian Safety

Healthy Food Options


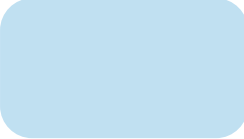



Explore Improved Connections to Park

Explore Improved Connections to Park

Explore Improved Connections to Park

Southern Boulevard Neighborhood Study: Future Vision

Legend

-  **Preserve Character & Affordability**
-  **Create a Connected Sheridan-Bronx River Corridor**
-  **Explore Zoning to Encourage Mixed-Use, Affordable Housing**
-  **Strengthen & Support Commercial Corridors**
-  **Strengthen Nodes of Activity**

Transform Southern Blvd. into a safe, vibrant, mixed-use corridor with new and preserved affordable housing

Reconnect community to the river and parks with affordable, mixed-use housing and open space

