

# Small Group Discussion

Welcome to our Small Group Discussion

## Instructions for optimal attendee experience:

- Now is the time to turn on your video and mics if you're comfortable doing so
- Use the chat to ask questions/provide feedback
- Side by Side view

## Online Conversation Etiquette:

- Mute yourself when you're not speaking to help prevent background noise.
- Listen to each other with respect.
- Each person gets a chance to talk.
- One person talks at a time: don't cut people off.
- Speak for yourself, and not as the representative of any group.
- If you are bothered by something that was said, say so and say why.

Turn your mic and video on/off here  
Please mute when the meeting begins

Ask questions during the presentation here



Parkchester -VanNest Remote Workshop  
Small Breakout Group - Room 1

# Connected Communities

Connected communities relates to how people get around the neighborhood, the city and the region.

As part of our remote open house, we asked participants to order study objectives based on their importance to them. Below were the top items identified:

- 58% 1. Ensure that major corridors are safe, well-lit, and offer pleasant pedestrian experiences
- 27% 2. Strengthen bike and walking connections to the station, transit, retail, and area campuses
- 11% 3. Address traffic circulation around the new station as the area continues to grow
- 4% 4. Improve wayfinding to local retail corridors, neighborhoods, and amenities (zoo, libraries, etc.)

# Parkchester/Van Nest Station Area Overview



Google Earth

© 2021 Google

300 ft

Station landing Area

# Quick Ice breaker

What is the most important thing about this new service and station coming to Parkchester/Van Nest?

One word answers!! :)

reliability of  
public transit  
for  
commuting

Parkchester parking  
garage housing  
concerns and  
notification to the  
community

Noise and  
mitigation  
from tracks  
and service

where will  
parking  
be  
available

pedestrian  
bridge access

providing  
parking for  
communities

clear  
communication to  
communities

gentrification  
concerns to  
community

game-changer  
to have new  
service in the  
area

possibility

parking

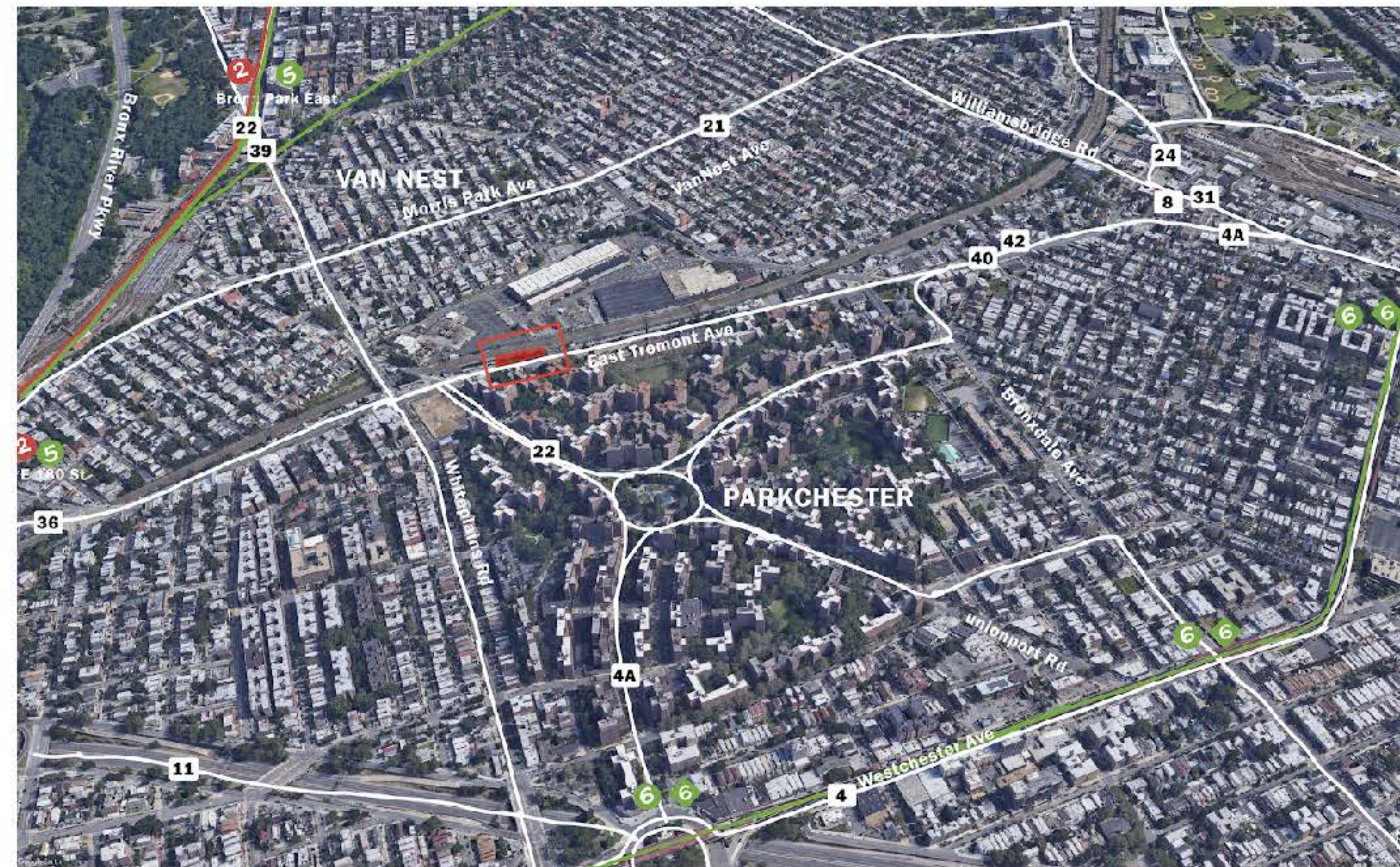
safety for  
residents

trash cleanup  
&  
maintenance

community



# Parkchester/Van Nest Station Area Overview



How do you get around the neighborhood and the city today?

- foot traffic and cars, family dense community
- walk around and buses
- walks, drives, train
- train, express bus, drive
- bike - best way
- not safest for bikes
- pedestrian safety, buses blocking cross-walks

How might you get around if there were other options? Would you bike? Take scooters?

- desire for biking but more safety
- more parking to accommodate families
- biking issues
- clear indications and wayfinding
- biking safety and concerns in Parkchester
- ticket violations
- shared services, electric and moped (Citibike, etc.)
- rules in Parkchester community prohibit biking
- shared services - to not leave personal bikes

The closest ferry station is the Soundview Ferry Terminal, 2.9 miles away

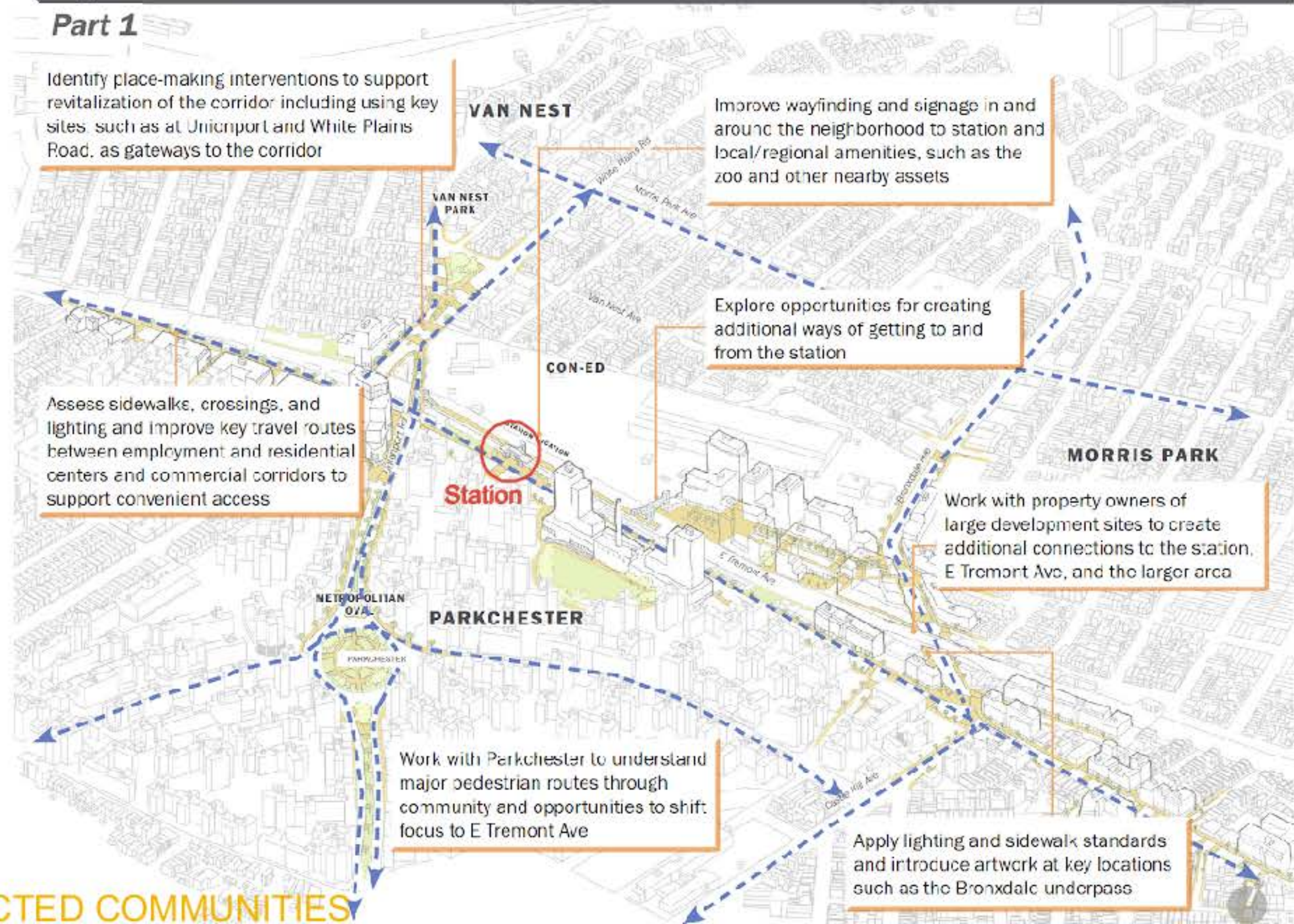
 Station

# Pedestrian and Bicycle Access

## Pedestrian passageways

**OBJECTIVE:** Ensure that major corridors are safe, well-lit, and offer pleasant pedestrian experiences

### Part 1



What are the biggest barriers to being able to walk around the neighborhood today?

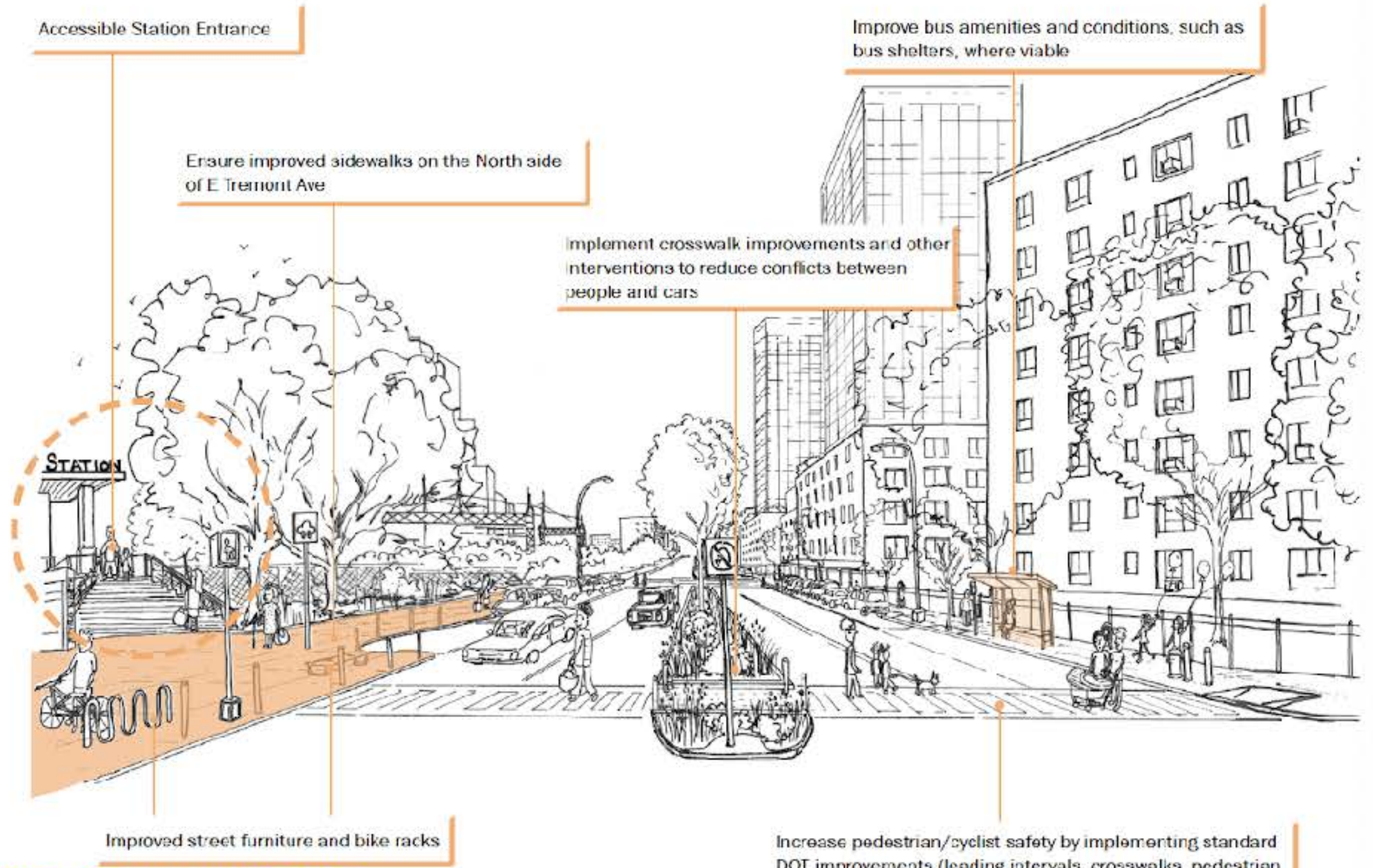
- Westchester ave - safety plans ?
- charter school, library to be represented on here, main artery to south of Parkchester
- Parkchester to Morris park - easier way to go through
- pedestrian bridges
- lack of connectivity, could be more
- Tremont Ave - stop lights, traffic lights, safe crossing to get across where stop will be
- White Plains Rd. - bus and 6 access, show and represent what will happen and be mentioned
- connection to all other connections near, within broad neighborhood
- lighting/plaza

# Pedestrian and Bicycle Access

## Transit connections

**OBJECTIVE:** Ensure that major corridors are safe, well-lit, and offer pleasant pedestrian experiences

### Part 2



What other improvements might help to make E Tremont Ave a more inviting corridor in the future?

Add comments here

Add comments here



We have heard a lot about the pedestrian and bike safety and this intersection of Bronxdale Ave. Here are some potential improvements. Are these the right improvements? Where else in the neighborhood are these needed?



Bronxdale Ave



Add  
Comments

Add  
Comments

Add  
Comments

Add  
Comments

Parkchester -VanNest Remote Workshop  
Small Breakout Group - Room 2

# Vibrant Communities

Vibrant communities relates to how we can plan for growth while celebrating who we are.

1. Encourage the development of a mixed-use, pedestrian-friendly district around the future station
2. Encourage welcoming public connections throughout the neighborhood
3. Make new stations a part of the neighborhood
4. Create new open spaces and improve and better connect to existing ones
5. Preserve existing housing and allow for new housing for a range of incomes and housing types
6. Promote fair transit-oriented development that benefits all residents
7. Support the area's diverse and growing immigrant communities
8. Make healthy food options available
9. Honor the area's history and promote public art
10. Plan for added demand for schools, police, fire service, and other basic services
11. Support aging in place

# Vibrant Communities

As part of our remote open house, we asked participants to order study objectives based on their importance to them. Below were the top items identified:

## Physical improvements

- 31%** 1) Make it easier and more pleasant to walk and move throughout the neighborhood
- 25%** 2) Create a walkable area with a mix of housing, retail and commercial uses around the station
- 15%** 3) Make new stations a part of the neighborhood

## Policy improvements

- 45%** 1) Preserve housing affordability for existing communities and grow new housing for all incomes and ages
- 19%** 2) Ensure everyone can enjoy the benefits of new development around the station
- 19%** 3) Make healthy food options available

# Parkchester/Van Nest Station Area Overview



Google Earth

Station landing Area

300 ft

# Quick Ice breaker

What is the most important thing about this new service and station coming to Parkchester/Van Nest?

convenience

**Safety**

**Ease of traffic**

Cleanliness

**Security Camera**

**Safety Officers**

There used to be a tunnel where the billboard is now for railroad workers when it was part of the New Haven.



Accessibility

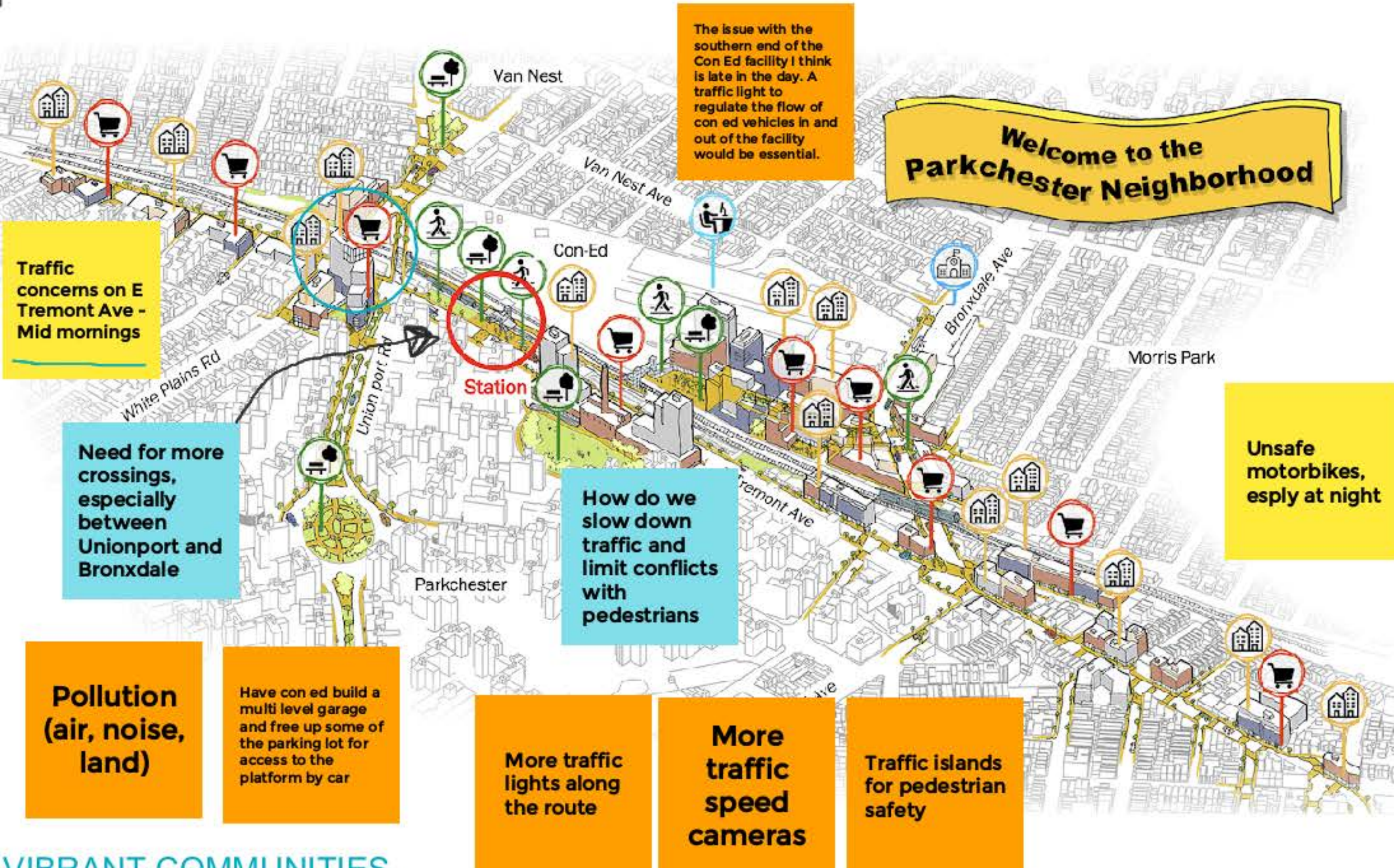
**Quality of Design**



Access through the Con Ed parking lot = better access

One word answers!! :)

# Encourage the development of a mixed-use, pedestrian-friendly district around the future station

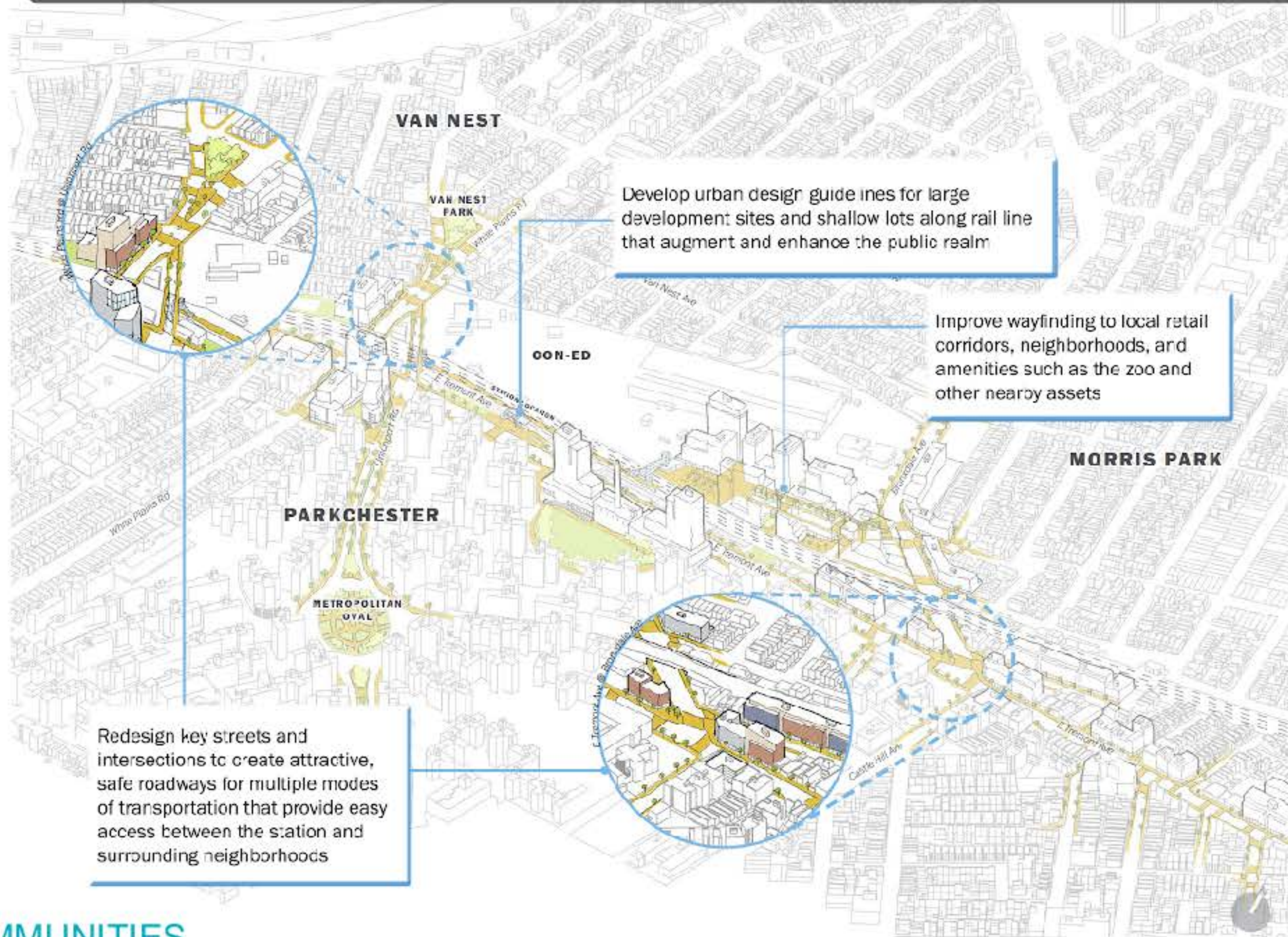


The image on the left shows a vision for how the E Tremont Ave corridor might change in the future, including a mix of retail, housing, parks improvements, and better pedestrian connections. How well does this image align with your vision for a Vibrant E Tremont Ave in the future? What works? What's missing?

# Land Use and Placemaking

## Public Realm

**OBJECTIVE:** Encourage welcoming public connections throughout the neighborhood



What are the most difficult parts of the neighborhood to navigate on foot or by bike today? What kinds of improvements might make it easier to move about?

**NE-Tremont streets not preferred well**

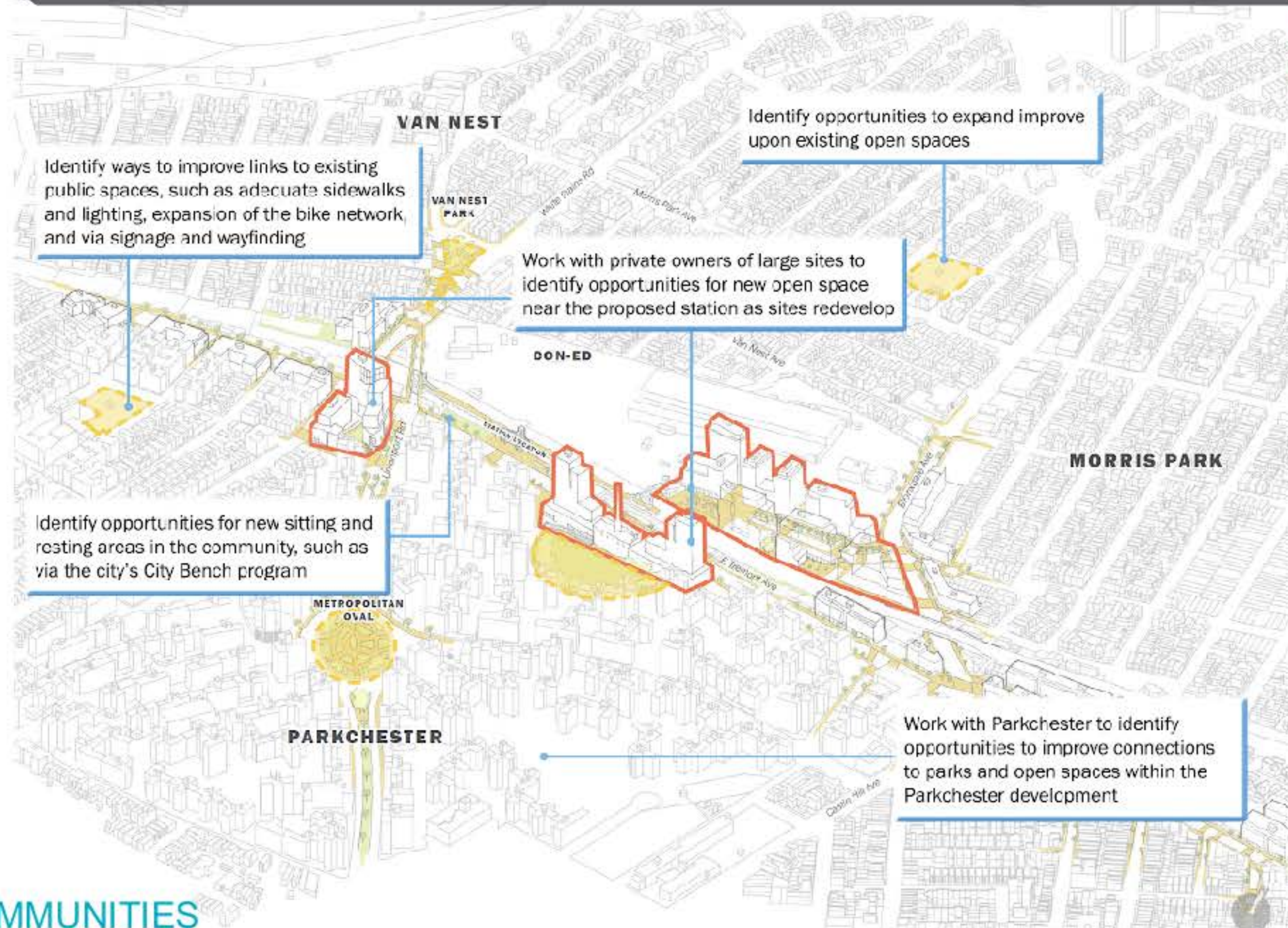
**Add comments here**



# Parks and Open Space

## Open space and Connections

**OBJECTIVE: Create new open spaces and improve and better connect to existing ones**



What are parks and open spaces in your neighborhood in most need of?

How can parks and open spaces in your neighborhood better serve you and your neighbors?

Add comments here

Add comments here

How well does the image on the right align with your vision for a Vibrant E Tremont Ave in the future?  
What's good? What might you change?



E Tremont Ave



Add  
comments  
here

Part of a successful station is making it feel like part of the neighborhood.

How well does this image correspond to your vision for E Tremont Ave in the future? What's good? What could be improved?



E Tremont Ave



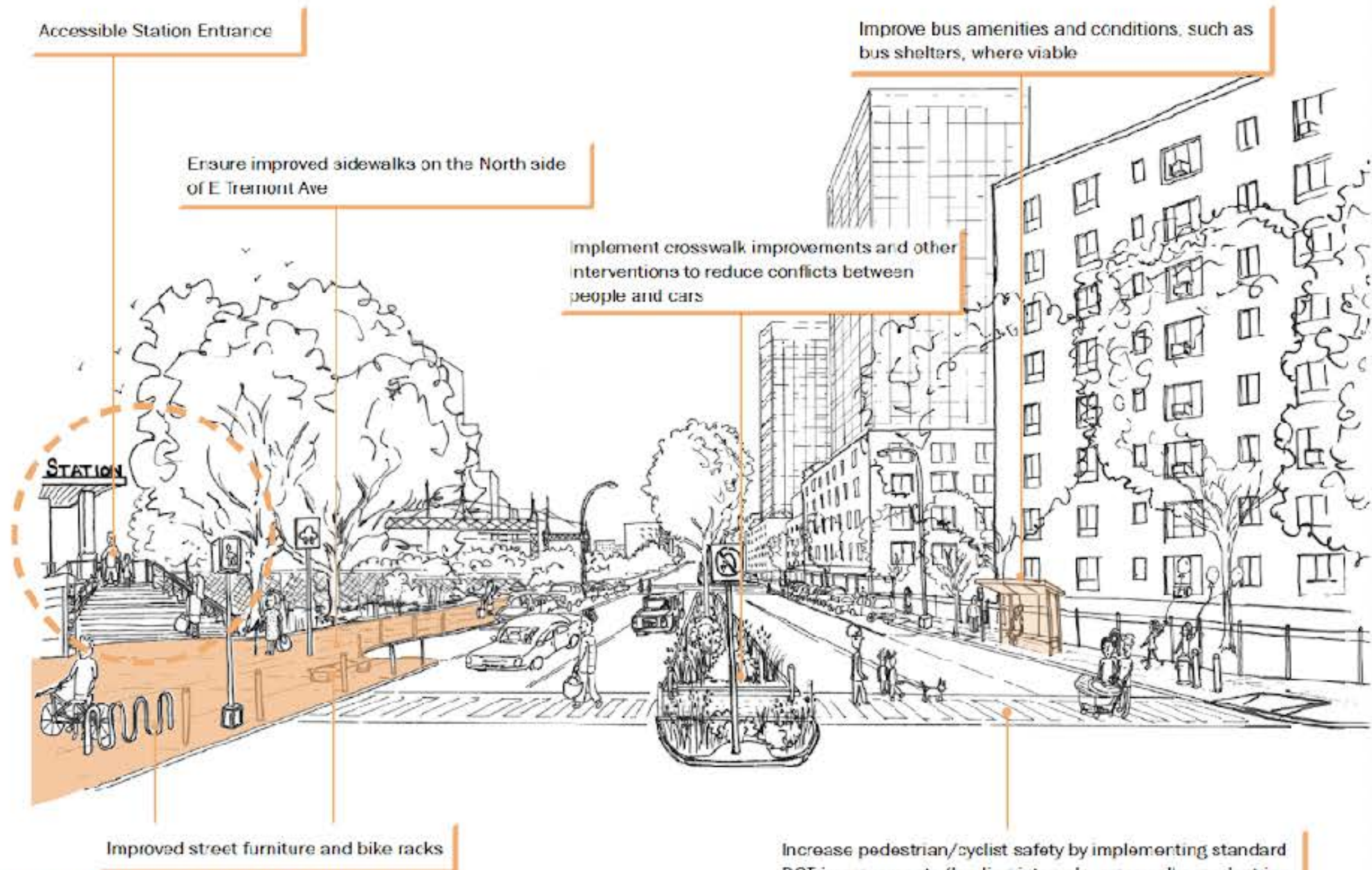
Add  
comments  
here

# Pedestrian and Bicycle Access

## Transit connections

**OBJECTIVE:** Ensure that major corridors are safe, well-lit, and offer pleasant pedestrian experiences

### Part 2



What other improvements might help to make E Tremont Ave a more inviting corridor in the future?

Improve accessibility, with specific to wheelchairs

I would guess an elevator to get to the respective side of the platform if necessary.

**Make all access ADA compliant**

# HIGHLIGHTS

**Public  
Safety -  
Traffic  
conflicts**

**Accessibility**

**Connectivity**

**Pedestrian  
Concerns -  
wide sidewalk,  
enhance  
walkability**

**Parking**

Union Port Rd  
and E tremont  
Ave

Parkchester -VanNest Remote Workshop  
Small Breakout Group - Room 3

# Working Communities

Working communities relates to focusing on growing jobs and connecting Bronxites to them.

44%

1. Connect Parkchester to major jobs hubs like Morris Park, Penn Station, and the region

34%

2. Ensure that Bronxites are aware of, qualified for, and connected to current and future job opportunities at area institutions and in the region

22%

3. Understand the needs of existing small businesses and identify tools to support them

# Parkchester/Van Nest Station Area Overview



Google Earth

Station landing Area

300 ft



# Quick Ice breaker

What is the most important thing about this new service and station coming to Parkchester/Van Nest?

One word answers!! :)



# Jobs and Workforce

Most residents work in either the Bronx or Manhattan, commuting up to 46 minutes to reach their place of work.

Most of the workers are coming from the Bronx followed by Westchester County and Queens. Fewer people live and work in the neighborhood

Residents and workers are primarily employed in either health care, retail trades, or educational services

## The median earnings for the top three industries

	 <b>Health Care &amp; Social Assistance</b>	 <b>Retail Trade</b>	 <b>Educational Services</b>
<b>RESIDENTS</b>	<b>\$40,000</b> Median earnings (22% of total employment)	<b>\$19,000</b> Median earnings (12% of total employment)	<b>\$41,000</b> Median earnings (11% of total employment)
<b>WORKERS</b>	<b>\$50,000</b> Median earnings (55% of total employment)	<b>\$36,000</b> Median earnings (5% of total employment)	<b>\$47,000</b> Median earnings (13% of total employment)

## Jobs for Future : Lifesciences R&D

Source: NYU Center for Urban Employment Statistics Data and BMSI data

Entry level medical and biological jobs pay between \$40K and \$50K

Training and certification programs enable advancement to technologist or supervisor positions with higher salaries upwards of \$100K

How do you think the new service will affect your decision about where to work and where to live?

(2.5hr commute to BK) helpful for going to jobs up north.

(Schools are overcrowded, especially middle school). access to higher service jobs

What are the barriers to getting these jobs?  
Does anyone here work in the local jobs centers?

Local jobs can be limited, especially at local nonprofits

(training limited to retail and health care). need to help young population with more jobs

No parking!

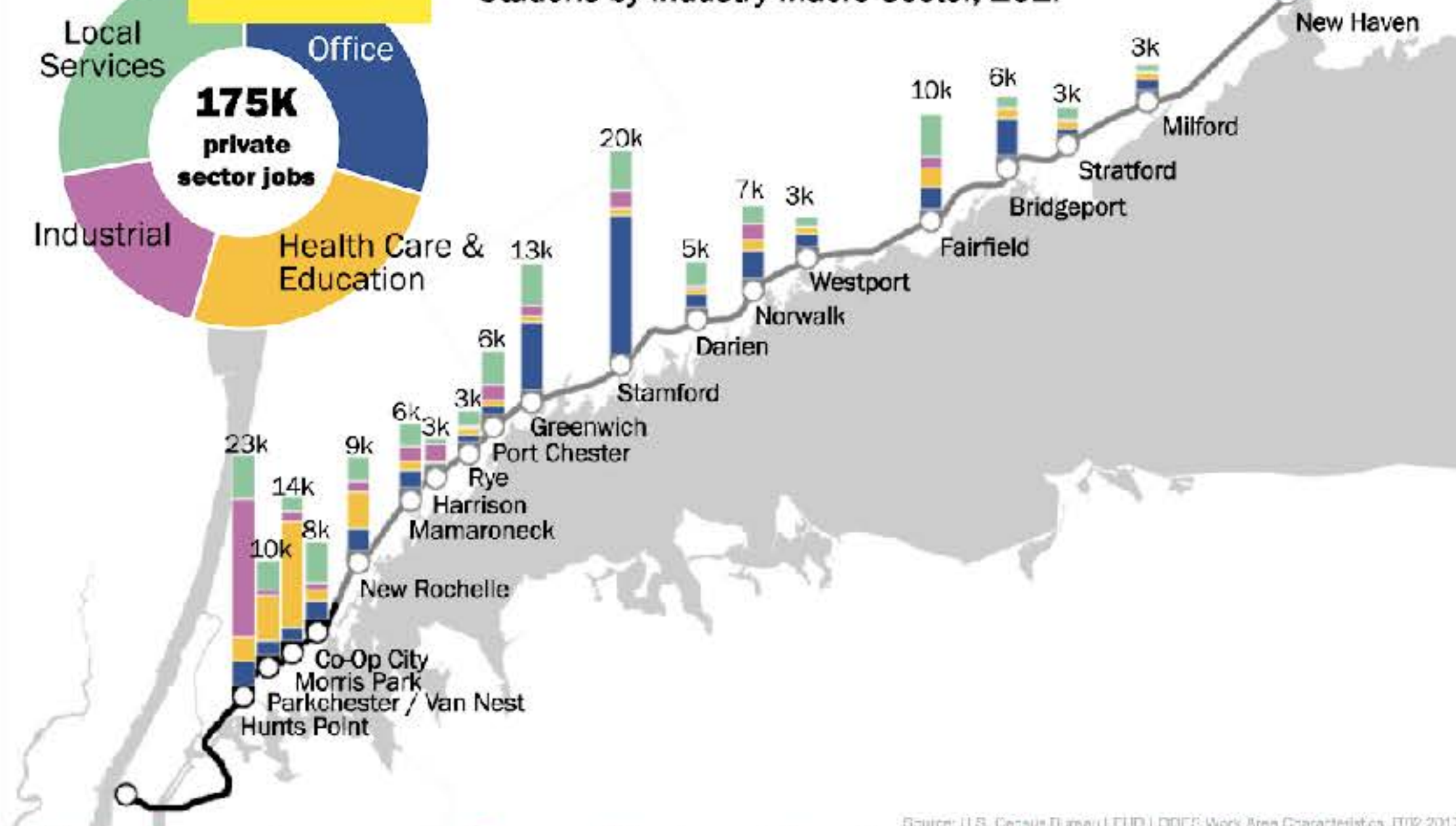
Nonprofits mentioned in chat: Voices Unbroken - <https://www.voicesunbroken.org/>, PEP - <https://www.centerlight.org/pep>

# The New Haven area has nearly as many jobs as St. Louis

Don't want to have to get 22 bus just to get to Castle hill



Jobs within 1/2 mile of New Haven Line Metro-North Stations by Industry Macro Sector, 2017



Source: U.S. Census Bureau (LEHD), BIPED Work Area Characteristics JTIW 2017

What other opportunities does new access open up for you and your family?

to relocate, more convenient to move

Connection to Pelham Parkway

My mom pre-retirement, used to work in the Blood Center at Valhalla - took the train up from Fordham, then a shuttle bus

We used to have a lot more transit options for Westchester day trips, Putnam & Jersey/LI too

Opportunities: Day trips for cycling and getting out of the city

Shorter to get to Valhalla, then to get to Brooklyn!

here today commute to any of these jobs

centers:

Add Comments

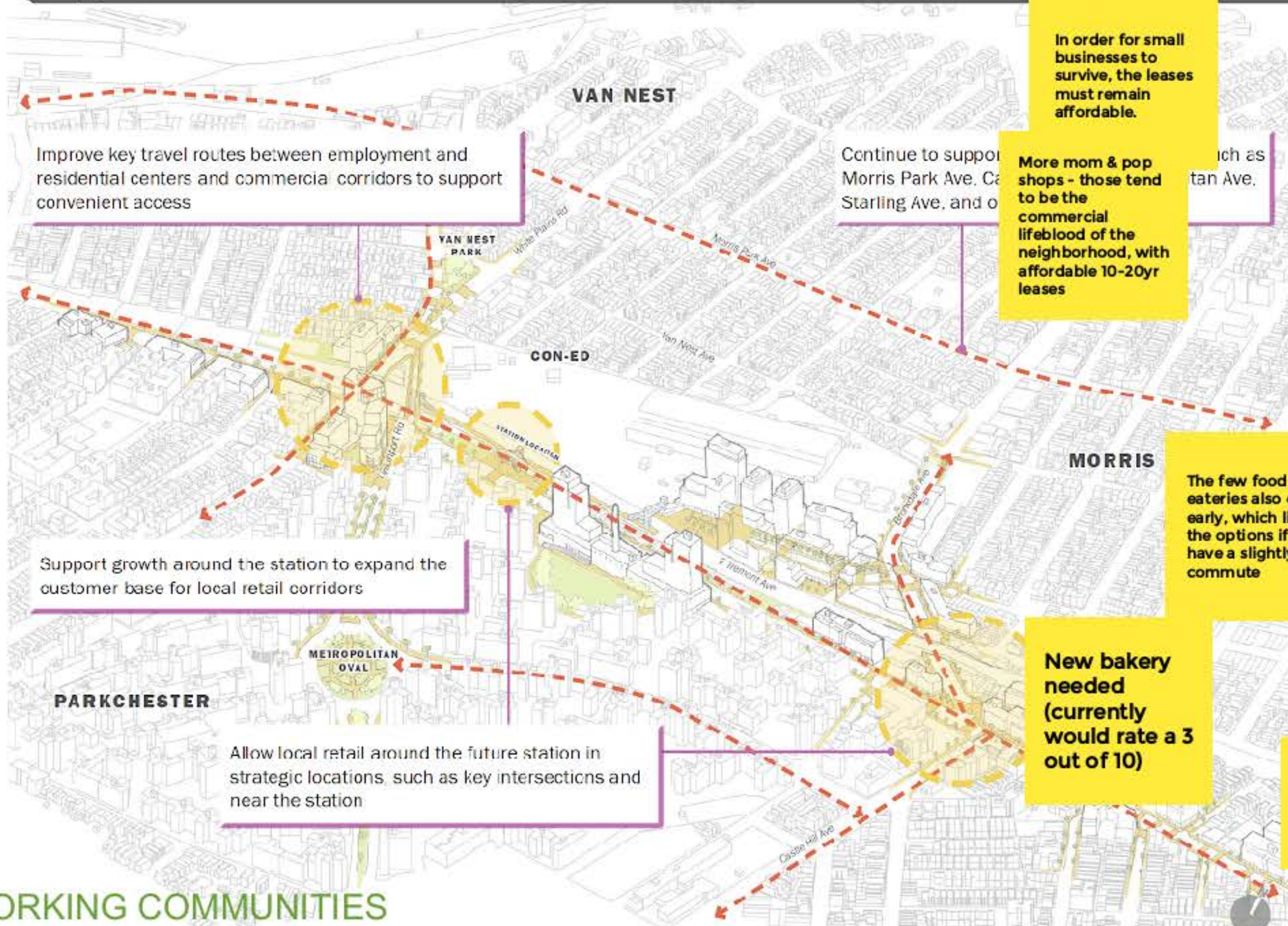
Does anyone here work at Hunts Point today? What might this mean for connections?

Add Comments

What kinds of supports can ensure Bronx residents can take advantage of new regional jobs/job centers ?

# Supporting local businesses and jobs growth

**OBJECTIVE: Understand the needs of existing small businesses and identify tools to support them**



Question for residents:  
Have you participated in any workforce development/professional/training programs in your neighborhood or elsewhere? If so, what were they?

What workforce development programs would you like to see in the neighborhood?

In order for small businesses to survive, the leases must remain affordable.

More mom & pop shops - those tend to be the commercial lifeblood of the neighborhood, with affordable 10-20yr leases

Continue to support Morris Park Ave. Corridor, Starling Ave, and other streets such as Tremont Ave.

Improve key travel routes between employment and residential centers and commercial corridors to support convenient access

That whole block along Tremont \*used\* to be vibrant with small stores, plus that giant block between Unionport & White Plains Rd

horrible eyesore underpass in Bronxdale

Add comments

lots of shops used to be there. (giant empty lots). they can be there again

Parkchester is an odd case as planned community - most people shop here in walking distance

Quick food options

The few food eateries also close early, which limits the options if you have a slightly later commute

New bakery needed (currently would rate a 3 out of 10)

We are in a border line food desert and could use some more fresh food spots

repurpose Con-ed and vacant properties on Unionport

nothing around unionport and Castle Hill

Food quality has declined

develop on the vacant lots, lots of potential here such as local small business, small shops

(retail follows people)

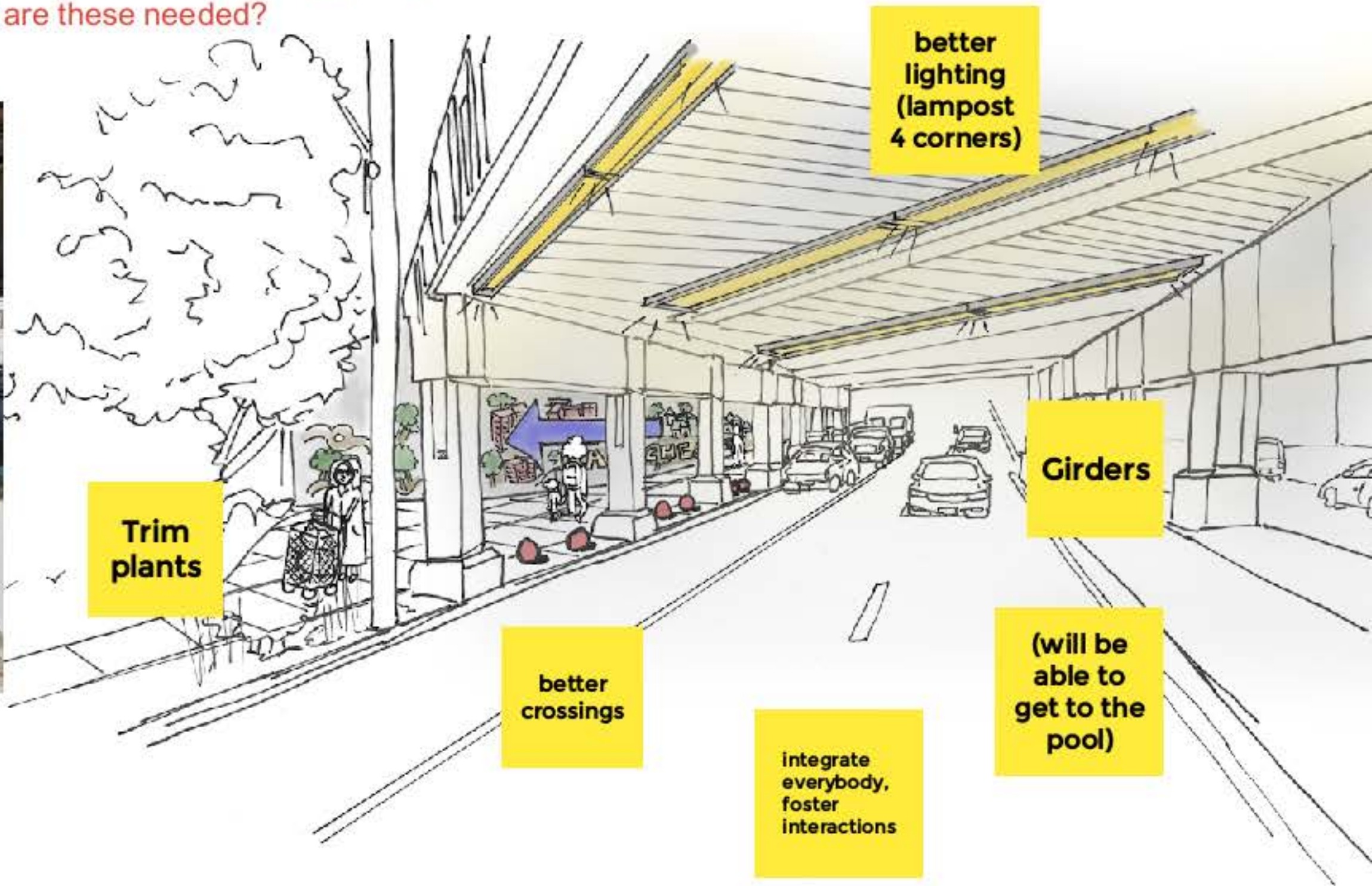
build out from the unused and vacant properties (low-hanging fruits)

Support growth around the station to expand the customer base for local retail corridors

PARKCHESTER

Allow local retail around the future station in strategic locations, such as key intersections and near the station

We have heard a lot about the pedestrian and bike safety and this intersection of Bronxdale Ave. Here are some potential improvements. Are these the right improvements? Where else in the neighborhood are these needed?



Bronxdale Ave

# HIGHLIGHTS

