



# Small-Cap Equity Index Fund Profile



Information current as of 06/30/2025

## Risk/Reward Indicator

Lower Risk/Reward

Higher Risk/Reward

## Investment Objective

The investment objective of the Small-Cap Equity Fund is to provide long-term growth of capital by investing primarily in the stocks of smaller companies. Small-cap stocks offer the opportunity for greater long-term capital appreciation. In the short-term, however, these stocks may display substantial volatility (risk as measured by standard deviation).

## Investment Guidelines

The Small-Cap Equity Fund will invest primarily in small and medium capitalization domestic companies listed on the U.S. exchanges or traded on the NASDAQ or over the counter.

## Fees: NYCDGP Fee versus Institutional Fund Fee

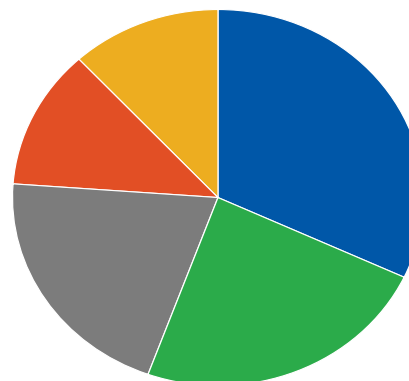
<b>NYCDGP Small-Cap Equity Fund</b>	<b>0.41%</b>
<i>Institutional Median Small-Cap Equity Fund</i>	<i>1.13%</i>

## Investment Managers

The Small-Cap Equity Fund is comprised of the following managers: T. Rowe Price (Growth), Westwood (Value), Systematic (Value), Wellington (Core) and Rhumbline (Index/Core).

## Current Allocation

**June 30, 2025 : \$4,169,765,035.0**



	Market Value (\$)	Allocation (%)
RhumbLine Small Cap Index	1,332,809,179	32.0
Wellington (Core)	982,786,105	23.6
T. Rowe Price (Growth)	860,303,688	20.6
Westwood Small Cap Value	500,331,930	12.0
Systematic Small Cap Value	493,534,132	11.8

## Comparative Performance

### After Fee Cumulative Returns Ending June 30, 2025

	1 Quarter	1 Year	2 Years	3 Years	4 Years	5 Years	6 Years	7 Years	10 Years	Since Inception	Inception Date
Small-Cap Equity Fund	6.4	4.8	6.7	9.5	0.1	9.9	7.7	7.0	8.5	9.1	01/01/1996
Russell 2000 Index	8.5	7.7	8.9	10.0	-0.1	10.0	7.1	5.5	7.1	8.2	
Small-Cap Equity Fund Rank	52	57	66	50	70	62	46	30	22	54	

### After Fee Year-to-Date and Annual Returns June 30, 2025

	YTD	2024	2023	2022	2021	2020	2019	2018	2017
Small-Cap Equity Fund	-3.3	9.0	18.7	-20.4	17.1	24.7	29.9	-7.1	18.0
Russell 2000 Index	-1.8	11.5	16.9	-20.4	14.8	20.0	25.5	-11.0	14.6
Small-Cap Equity Fund Rank	63	68	27	64	65	31	18	24	27

## Additional Information

The benchmark for the Small-Cap Equity Fund is the Russell 2000 Index. All performance figures provided are net of fees. The fee includes the 4 basis point (0.04%) administrative fee. Institutional Median Fees are derived from Morningstar universes.

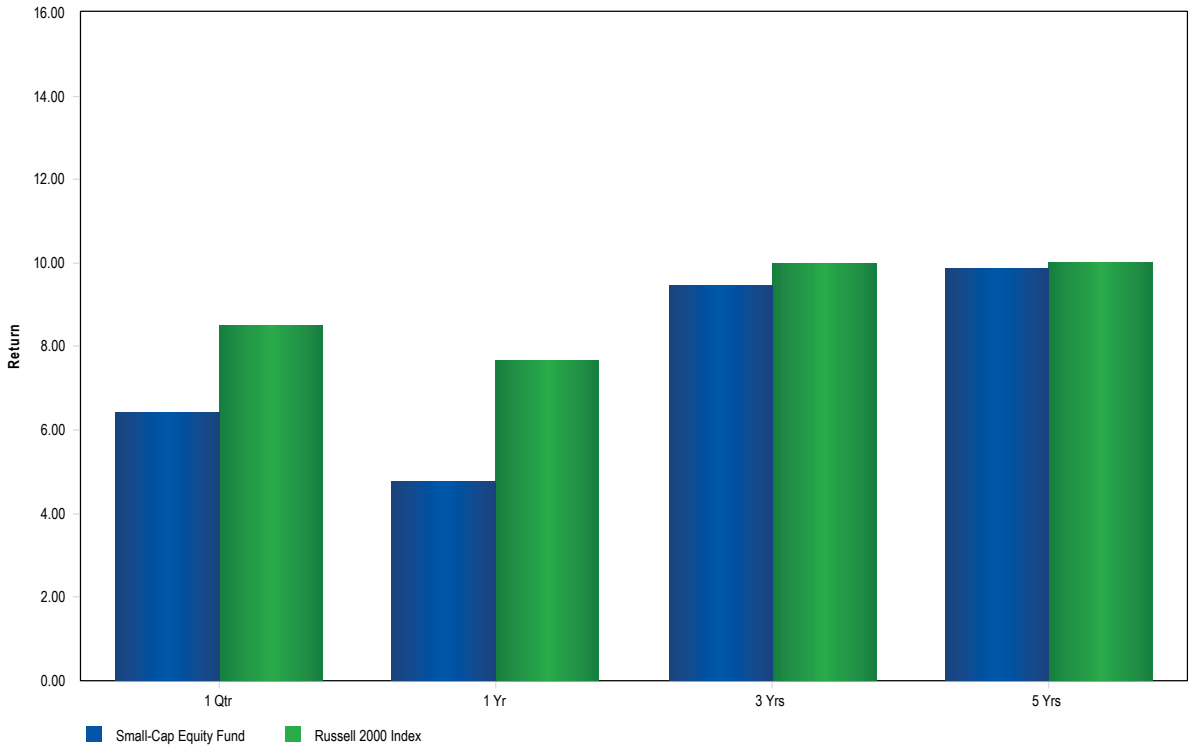


# Small-Cap Equity Index Fund Profile

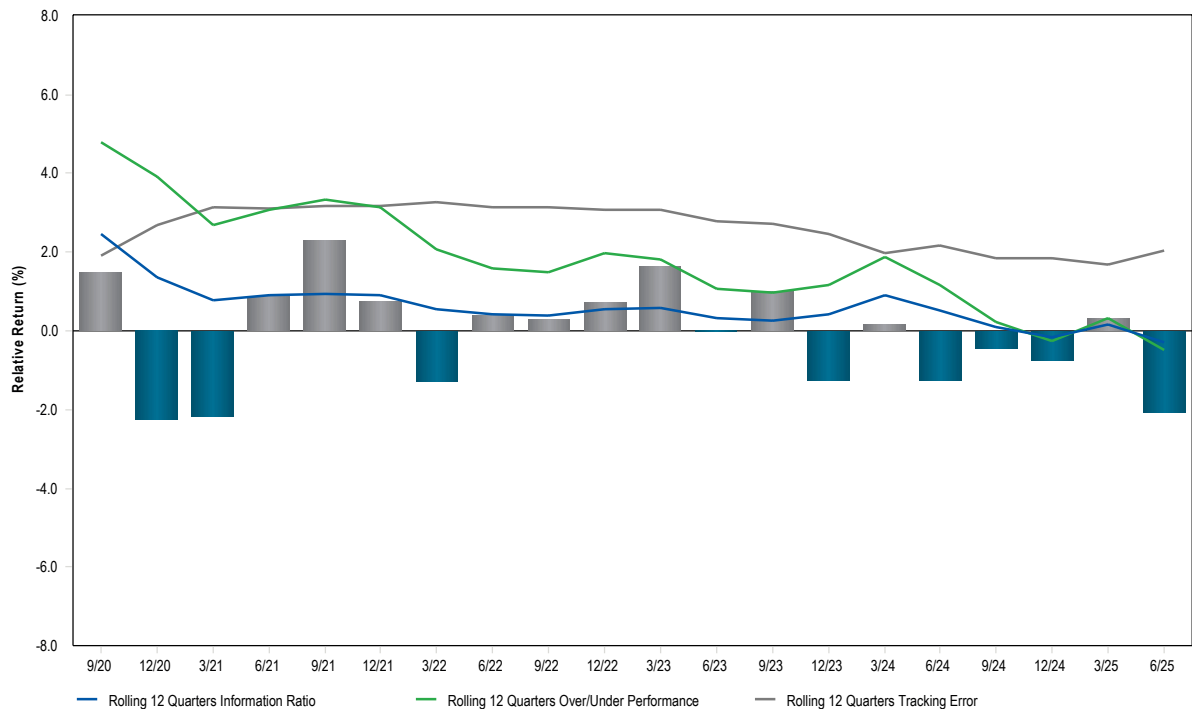


Information current as of 06/30/2025

Calendar Year Returns vs. Benchmark



Rolling Three Year Performance, Information Ratio and Tracking Error



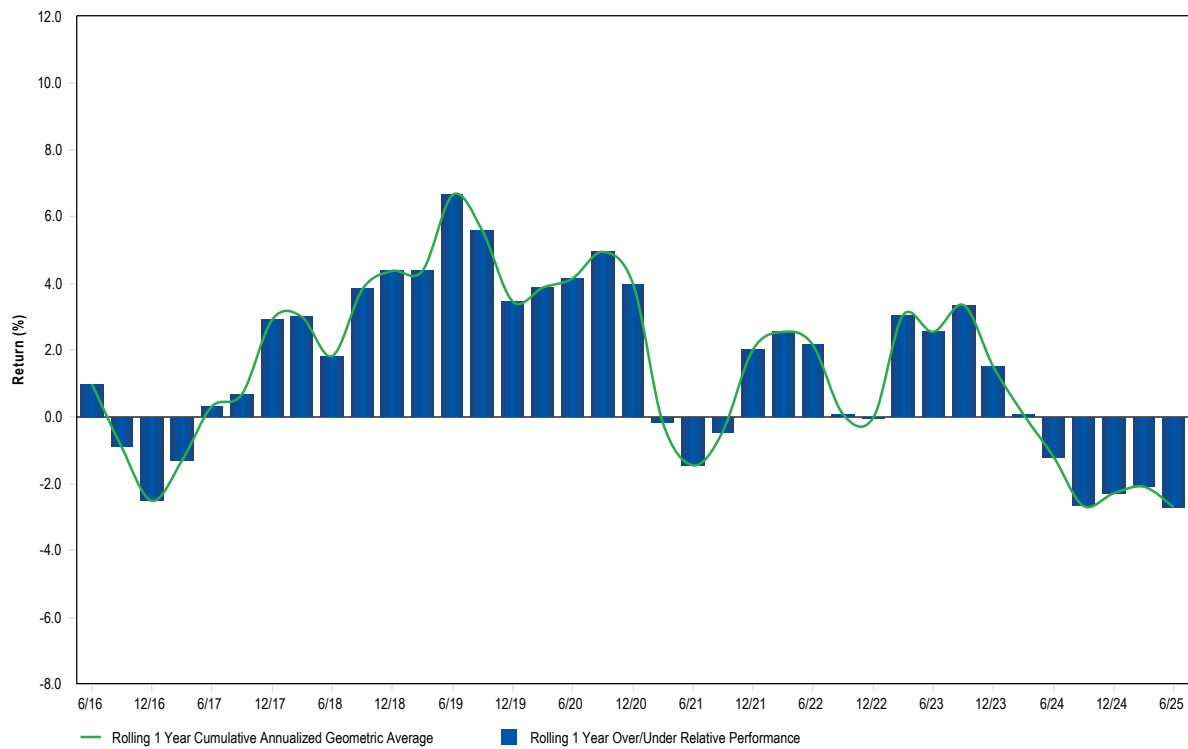


# Small-Cap Equity Index Fund Profile

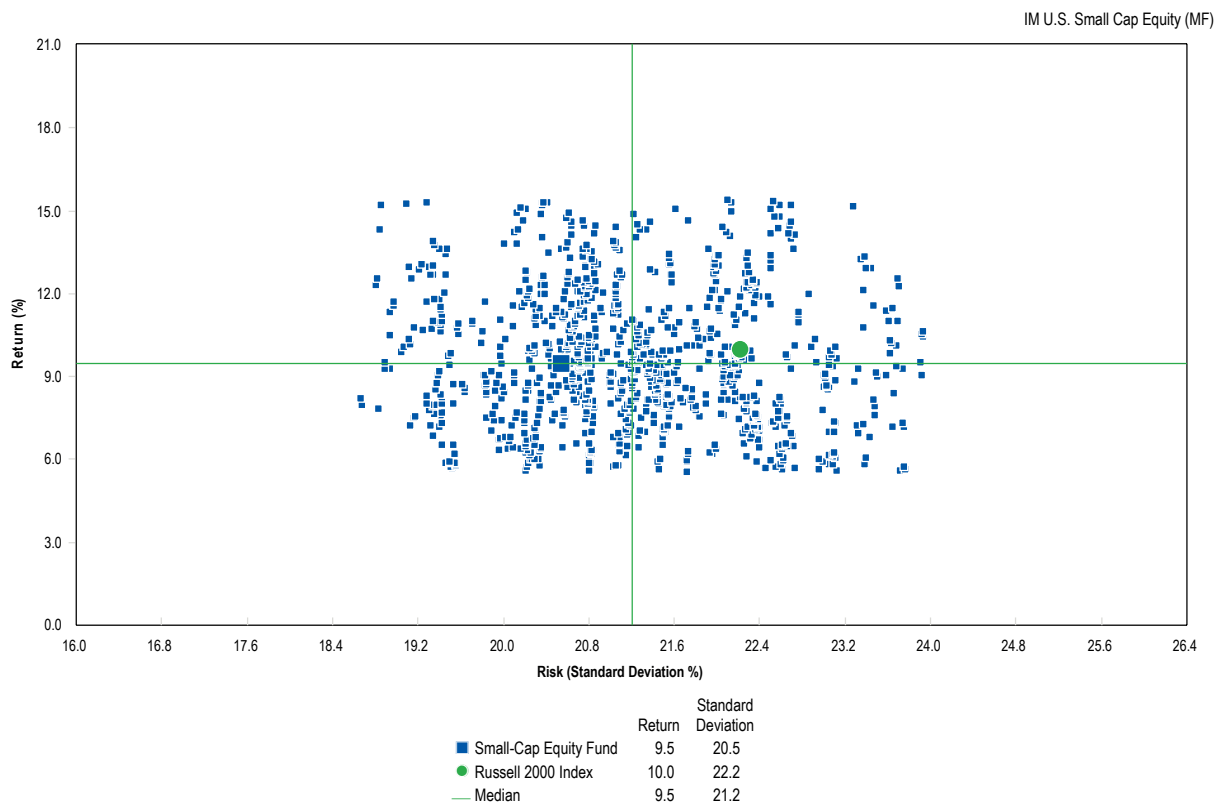
Information current as of 06/30/2025



## Annualized Excess Performance



## Annualized Return vs. Annualized Standard Deviation - 3 Years Ending June 30, 2025



The above analysis shows the portfolio risk (measured by standard deviation) vs. the portfolio return.



# Small-Cap Equity Index Fund Profile



Information current as of 06/30/2025

## Top Ten Equity Holdings

	Portfolio Weight (%)	Benchmark Weight (%)	Active Weight (%)	Quarterly Return (%)
Dayforce Inc	0.66	0.00	0.66	-5.04
Seacoast Banking Corp of Florida	0.61	0.09	0.52	8.12
Banner Corp	0.58	0.09	0.49	1.38
Verra Mobility Corp	0.58	0.16	0.42	12.79
Gulfport Energy Corp	0.58	0.12	0.46	9.25
Paylocity Holding Corp	0.57	0.00	0.57	-3.28
UMB Financial Corp	0.56	0.30	0.26	4.41
Teledyne Technologies Inc.	0.55	0.00	0.55	2.93
Cheesecake Factory Inc (The)	0.54	0.11	0.43	29.41
HubSpot Inc	0.54	0.00	0.54	-2.57
% of Portfolio	5.77	0.87	4.90	

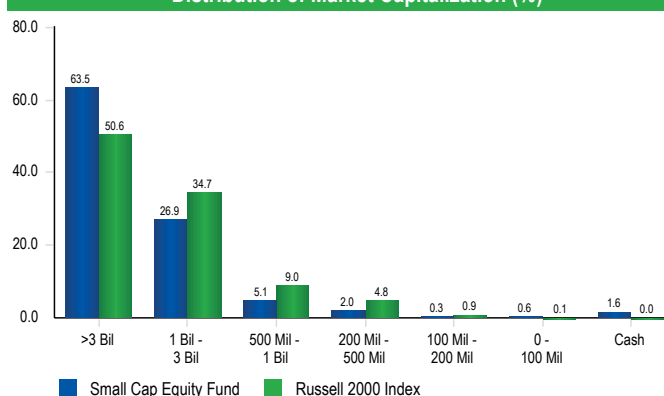
## Portfolio Characteristics

	Portfolio	Benchmark
Number of Stocks	2,048	1,989
Wtd. Avg. Mkt. Cap (\$)	6,541,115,857	3,422,142,434
Median Mkt. Cap (\$)	1,058,626,640	854,749,855
Price/Earnings ratio	19.0	18.0
Price/Book ratio	2.6	2.5
Return on Equity (%)	-1.1	-1.6
Current Yield (%)	1.3	1.4
Beta (5 Years, Monthly)	0.9	1.0
R-Squared (5 Years, Monthly)	1.0	1.0

## Sector Allocation

Sector	Portfolio Weight (%)	Benchmark Weight (%)
Communication Services	1.7	2.6
Consumer Discretionary	9.3	10.1
Consumer Staples	2.3	2.3
Energy	4.4	4.9
Financials	16.7	19.3
Health Care	15.3	16.0
Industrials	22.2	17.1
Information Technology	14.5	14.7
Materials	3.2	3.8
Real Estate	5.7	6.1
Utilities	2.5	3.2
<b>Total</b>	<b>97.9</b>	<b>100.0</b>

## Distribution of Market Capitalization (%)



## Disclaimer

The past performance of this Fund does not guarantee future results. Historical returns may reflect the performance of previous managers and allocations of the fund.

The Fund described in this Investment Profile is not FDIC insured; is not a deposit or obligation of, nor guaranteed by, any financial institution; and is not guaranteed by the New York City Deferred Compensation Plan ("Plan") or any federal, state or local government agency.

The Plan cannot offer investment, financial, tax or legal advice or make investment recommendations. The Plan regularly evaluates the performance of its investment managers and may change managers at any time. Please consider the investment objectives, risks, fees and expenses carefully before investing. The Plan's investments are in separate account vehicles, not in mutual funds. The Plan's funds are not listed in the newspaper; rather the daily net asset values are available on the Plan's website.