

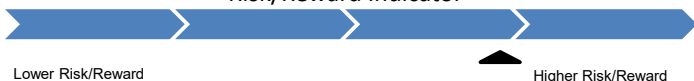


# Equity Index Fund Profile

Information current as of 06/30/2025



## Risk/Reward Indicator



## Investment Managers

The Equity Index Fund is comprised of the following manager:  
BNY Mellon

## Current Allocation

June 30, 2025 : \$14,866,346,238.7

## Investment Objective

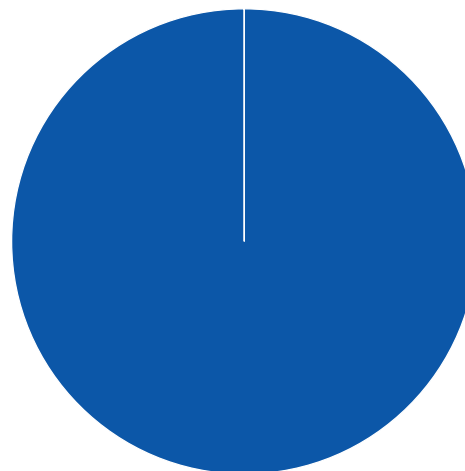
The investment objective of the Equity Index Fund is to replicate the return of the Standard & Poor's (S&P) 500 Index. The Equity Index Fund offers participants exposure to the stocks of large corporations through a passive investment vehicle. Returns on large cap equities have historically exceeded inflation, but with substantial volatility over short and even intermediate holding periods (risk as measured by standard deviation).

## Investment Guidelines

The Equity Index Fund will invest in a portfolio of equity securities of companies listed on the U. S. securities exchanges that replicates the composition and characteristics of the S&P 500 Index.

## Fees: NYCDGP Fee versus Institutional Fund Fee

<b>NYCDGP Equity Index Fund</b>	<b>0.04%</b>
<i>Institutional Median Equity Index Fund</i>	<i>0.79%</i>



	Market Value (\$)	Allocation (%)
■ BNY Mellon Equity Index Fund	14,866,346,239	100.0

## Comparative Performance

### After Fee Cumulative Returns Ending June 30, 2025

	1 Quarter	1 Year	2 Years	3 Years	4 Years	5 Years	6 Years	7 Years	10 Years	Since Inception	Inception Date
Equity Index Fund	10.9	15.2	19.8	19.7	11.3	16.7	15.1	14.4	13.7	10.2	01/01/1996
S&P 500	10.9	15.2	19.8	19.7	11.3	16.6	15.1	14.4	13.6	10.1	
Equity Index Fund Rank	56	37	48	49	21	19	40	37	36	30	

### After Fee Year-to-Date and Annual Returns June 30, 2025

	YTD	2024	2023	2022	2021	2020	2019	2018	2017
Equity Index Fund	6.2	25.0	26.3	-18.1	28.8	18.5	31.7	-4.4	21.8
S&P 500	6.2	25.0	26.3	-18.1	28.7	18.4	31.5	-4.4	21.8
Equity Index Fund Rank	50	42	52	41	17	57	42	51	57

## Additional Information

The benchmark for the Equity Index Fund is the S&P 500. All performance figures provided are net of fees. The fee includes the 4 basis point (0.04%) administrative fee. Institutional Median Fees are derived from Morningstar universes.

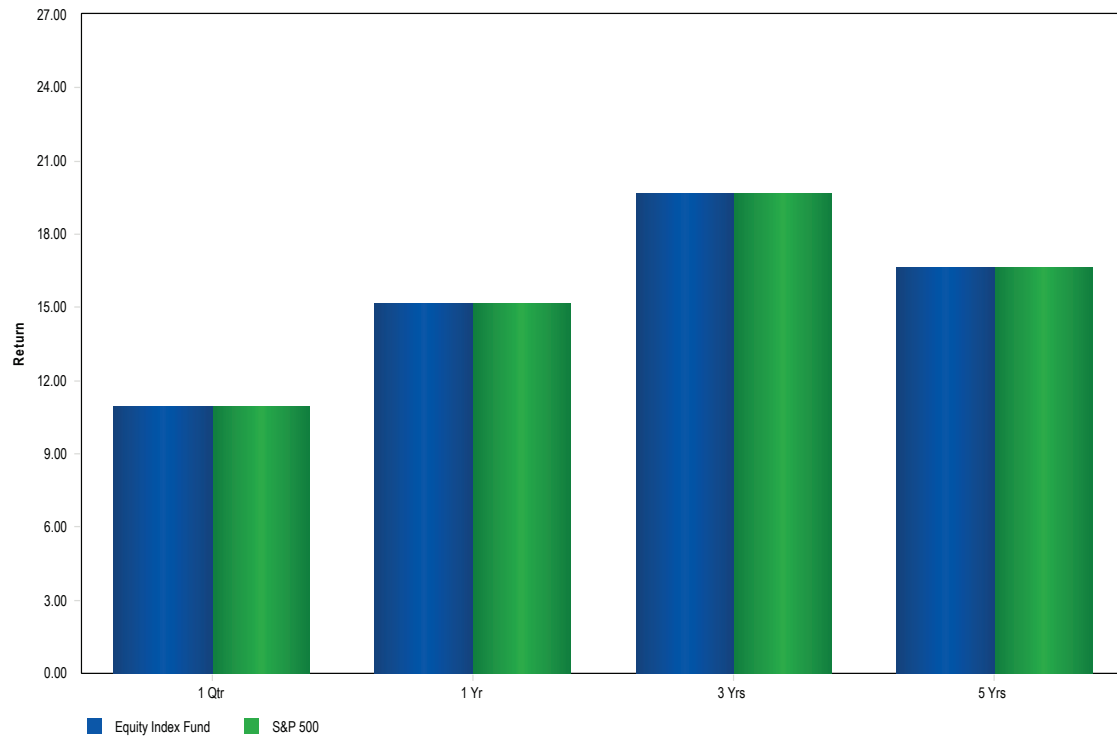


# Equity Index Fund Profile

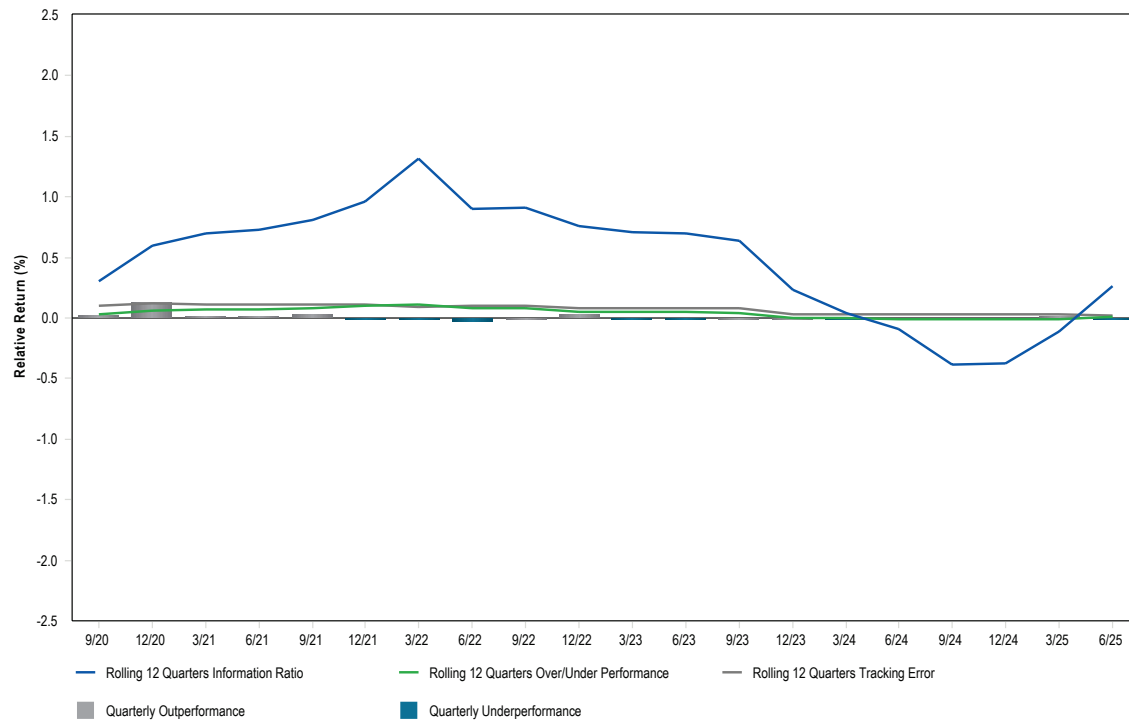
Information current as of 06/30/2025



## Calendar Year Returns vs. Benchmark



## Rolling Three Year Performance, Information Ratio and Tracking Error



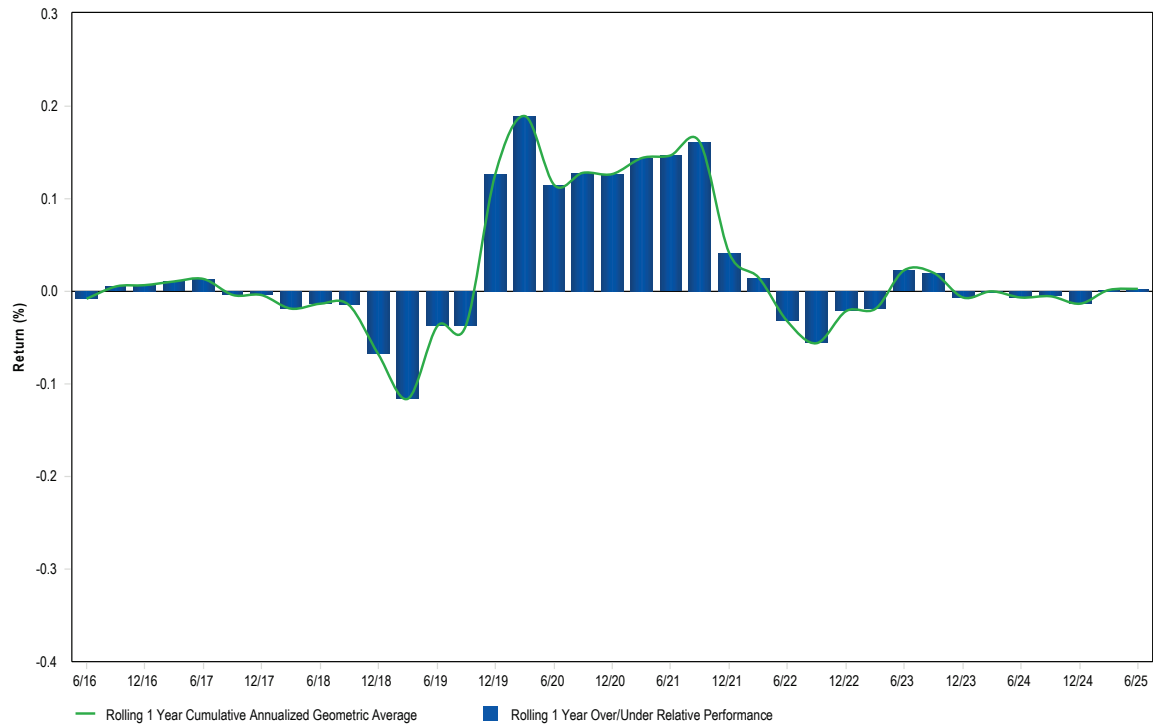


# Equity Index Fund Profile

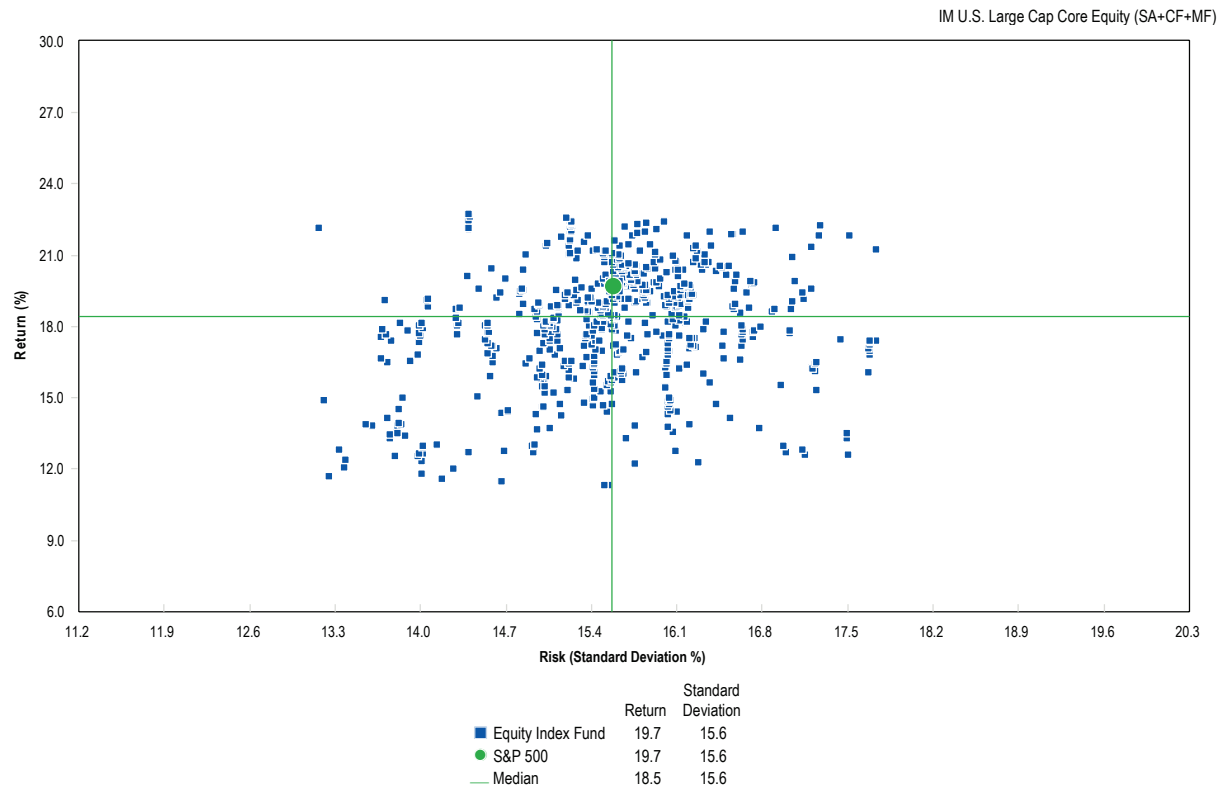
Information current as of 06/30/2025



## Annualized Excess Performance



## Annualized Return vs. Annualized Standard Deviation - 3 Years Ending June 30, 2025



The above analysis shows the portfolio risk (measured by standard deviation) vs. the portfolio return.



# Equity Index Fund Profile

Information current as of 06/30/2025



## Top Ten Equity Holdings

	Portfolio Weight (%)	Benchmark Weight (%)	Active Weight (%)	Quarterly Return (%)
NVIDIA Corporation	7.28	7.34	-0.06	45.78
Microsoft Corp	6.98	7.04	-0.06	32.75
Apple Inc	5.79	5.84	-0.05	-7.52
Amazon.com Inc	3.91	3.95	-0.04	15.31
Meta Platforms Inc	3.03	3.05	-0.02	28.16
Broadcom Inc	2.45	2.47	-0.02	65.03
Google Inc [A]	1.94	1.95	-0.01	14.10
Berkshire Hathaway Inc	1.68	1.70	-0.02	-8.79
Tesla Inc	1.68	1.70	-0.02	22.57
Alphabet Inc	1.57	1.59	-0.02	13.68
% of Portfolio	36.31	36.63	-0.32	

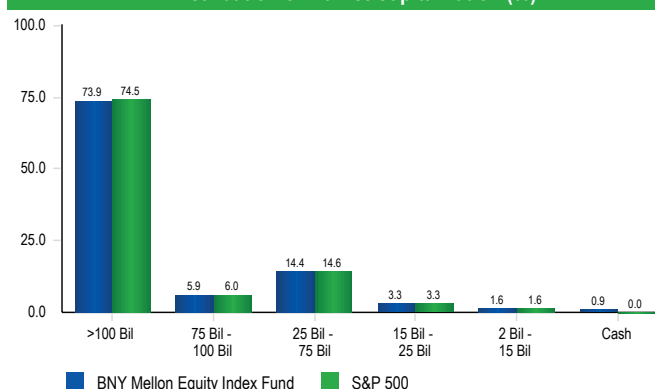
## Sector Allocation

Sector	Portfolio Weight (%)	Benchmark Weight (%)
Communication Services	9.7	9.8
Consumer Discretionary	10.3	10.4
Consumer Staples	5.5	5.5
Energy	3.0	3.0
Financials	13.9	14.0
Health Care	9.2	9.3
Industrials	8.5	8.6
Information Technology	32.8	33.1
Materials	1.9	1.9
Real Estate	2.0	2.0
Utilities	2.4	2.4
<b>Total</b>	<b>99.1</b>	<b>100.0</b>

## Portfolio Characteristics

	Portfolio	Benchmark
Number of Stocks	506	504
Wtd. Avg. Mkt. Cap (\$)	1,121,255,756,808	1,130,942,058,331
Median Mkt. Cap (\$)	36,550,821,045	36,550,821,045
Price/Earnings ratio	27.3	27.3
Price/Book ratio	5.2	5.2
Return on Equity (%)	9.9	9.9
Current Yield (%)	1.3	1.3
Beta (5 Years, Monthly)	1.0	1.0
R-Squared (5 Years, Monthly)	1.0	1.0

## Distribution of Market Capitalization (%)



## Disclaimer

The past performance of this Fund does not guarantee future results. Historical returns may reflect the performance of previous managers and allocations of the fund.

The Fund described in this Investment Profile is not FDIC insured; is not a deposit or obligation of, nor guaranteed by, any financial institution; and is not guaranteed by the New York City Deferred Compensation Plan ("Plan") or any federal, state or local government agency.

The Plan cannot offer investment, financial, tax or legal advice or make investment recommendations. The Plan regularly evaluates the performance of its investment managers and may change managers at any time. Please consider the investment objectives, risks, fees and expenses carefully before investing. The Plan's investments are in separate account vehicles, not in mutual funds. The Plan's funds are not listed in the newspaper; rather the daily net asset values are available on the Plan's website.