

SOUTH STREET SEAPORT

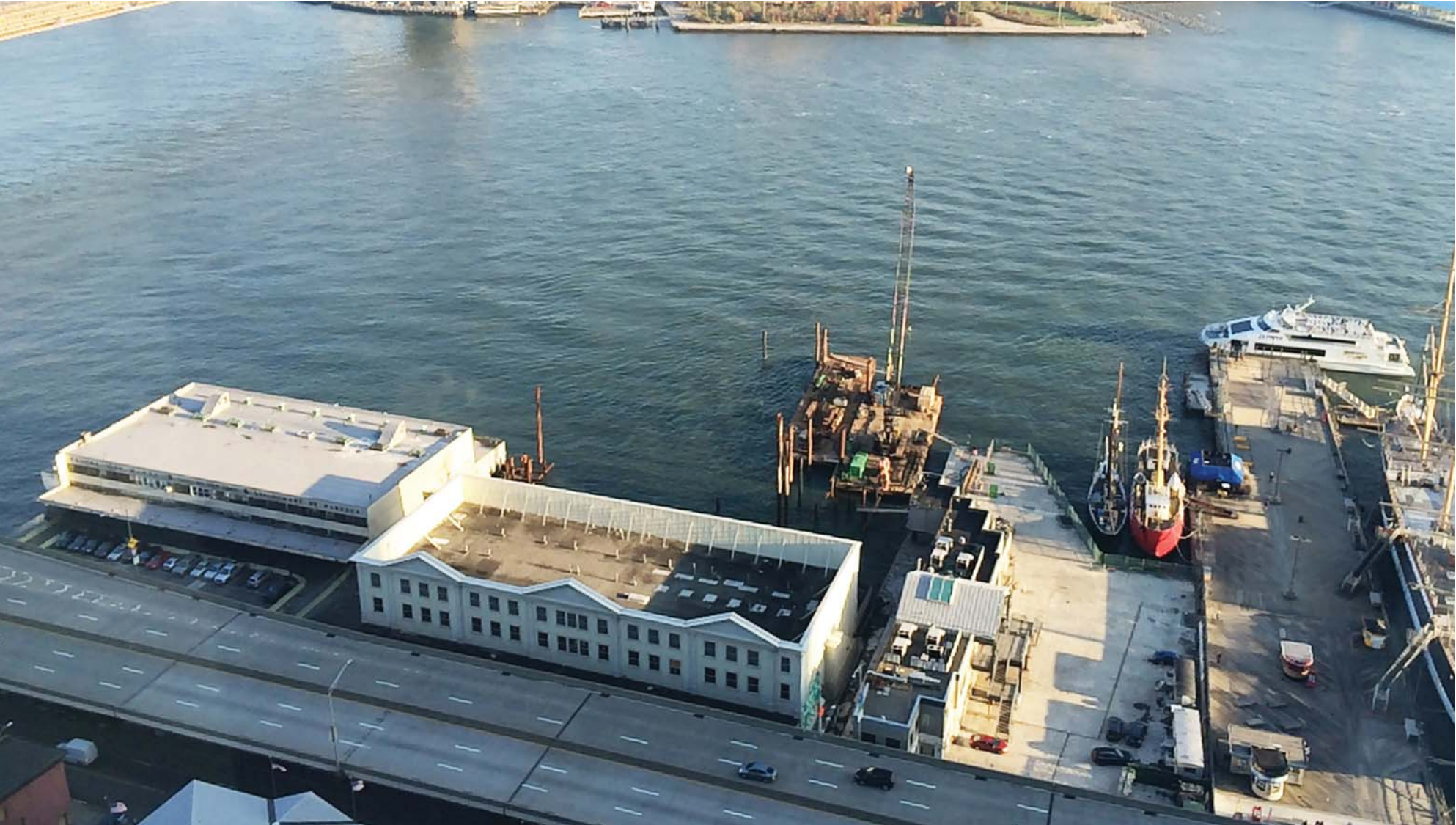
PIER 17 PROPOSED MODIFICATIONS

JULY 02, 2015

SOUTH STREET SEAPORT // THE SITE (OCTOBER 2012)



SOUTH STREET SEAPORT // THE SITE (DEC 2014)



SOUTH STREET SEAPORT // THE SITE (JUNE 2015)



SOUTH STREET SEAPORT // PIER 17 REDEVELOPMENT // (10.15.13 APPROVED)



SOUTH STREET SEAPORT // PIER 17 REDEVELOPMENT // (10.15.13 APPROVED)



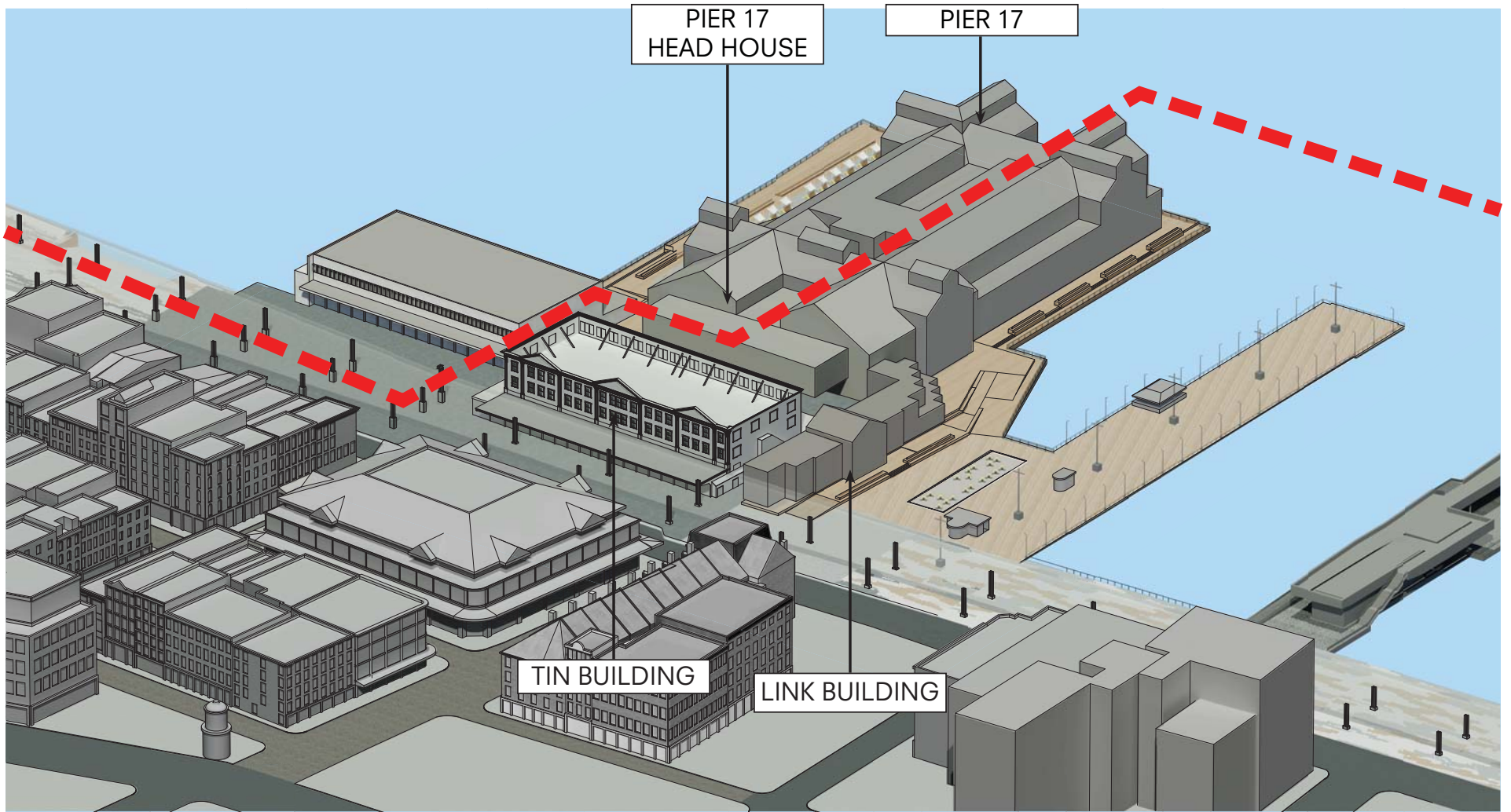
SOUTH STREET SEAPORT // PIER 17 REDEVELOPMENT // (10.15.13 APPROVED)



SOUTH STREET SEAPORT // PIER 17 REDEVELOPMENT // (10.15.13 APPROVED)

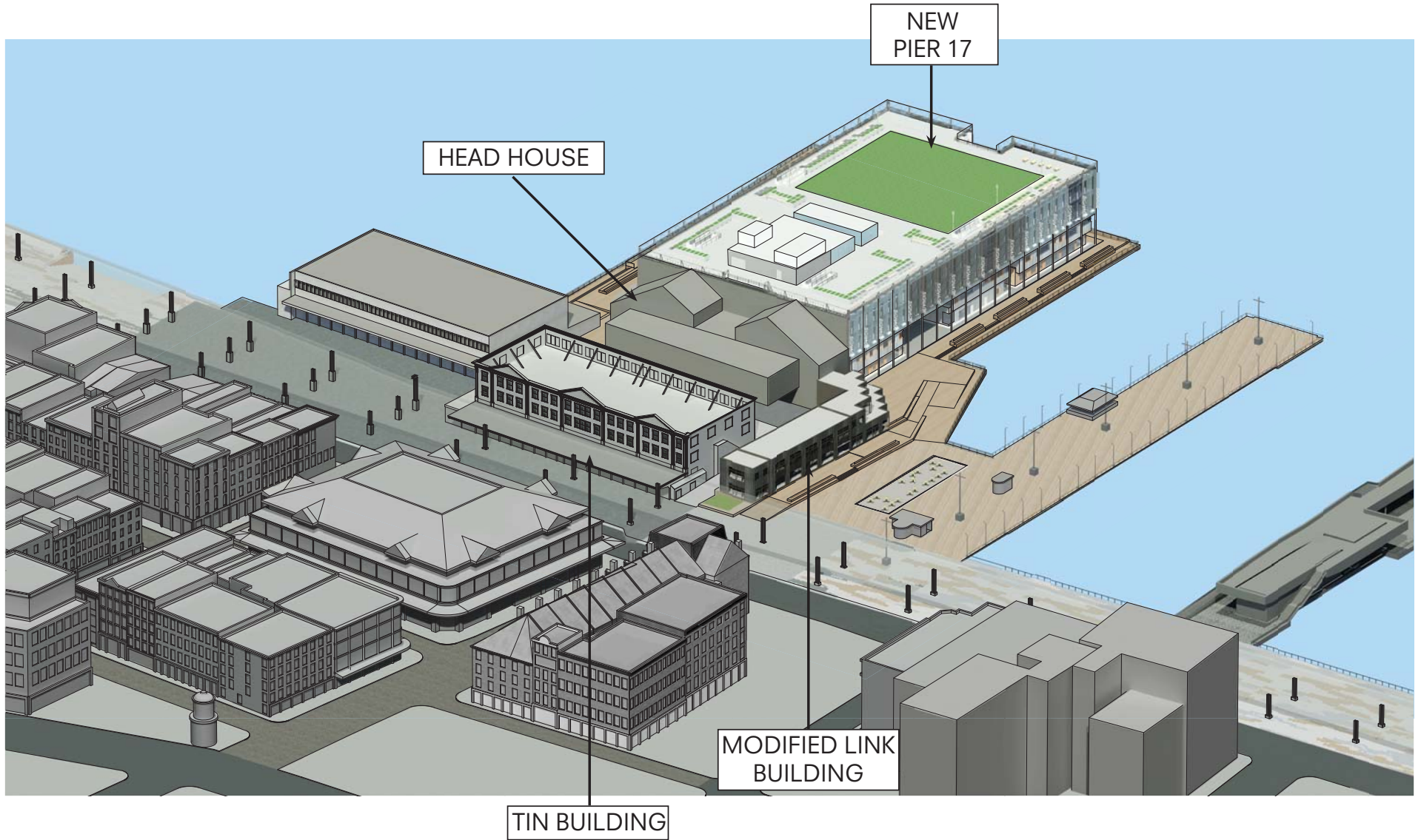


SOUTH STREET SEAPORT // PRE-EXISTING PIER 17



--- HISTORIC DISTRICT BOUNDARY

SOUTH STREET SEAPORT // PIER 17 RENOVATION // (10.15.13 APPROVED)



PIER 17 PROPOSED MODIFICATIONS

REMOVAL OF HEAD HOUSE

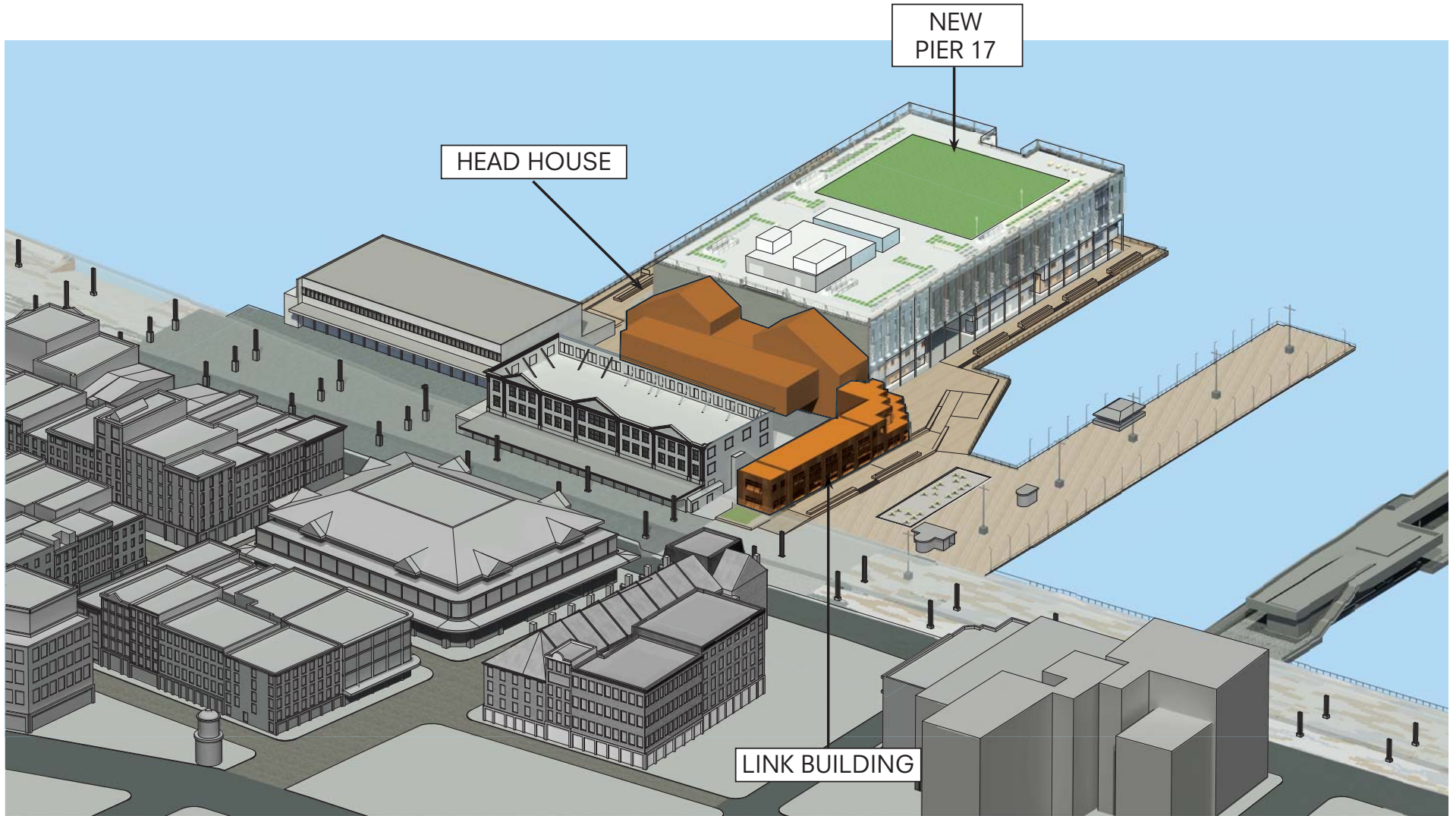
COMPLETION OF WEST FACADE

REMOVAL OF LINK BUILDING

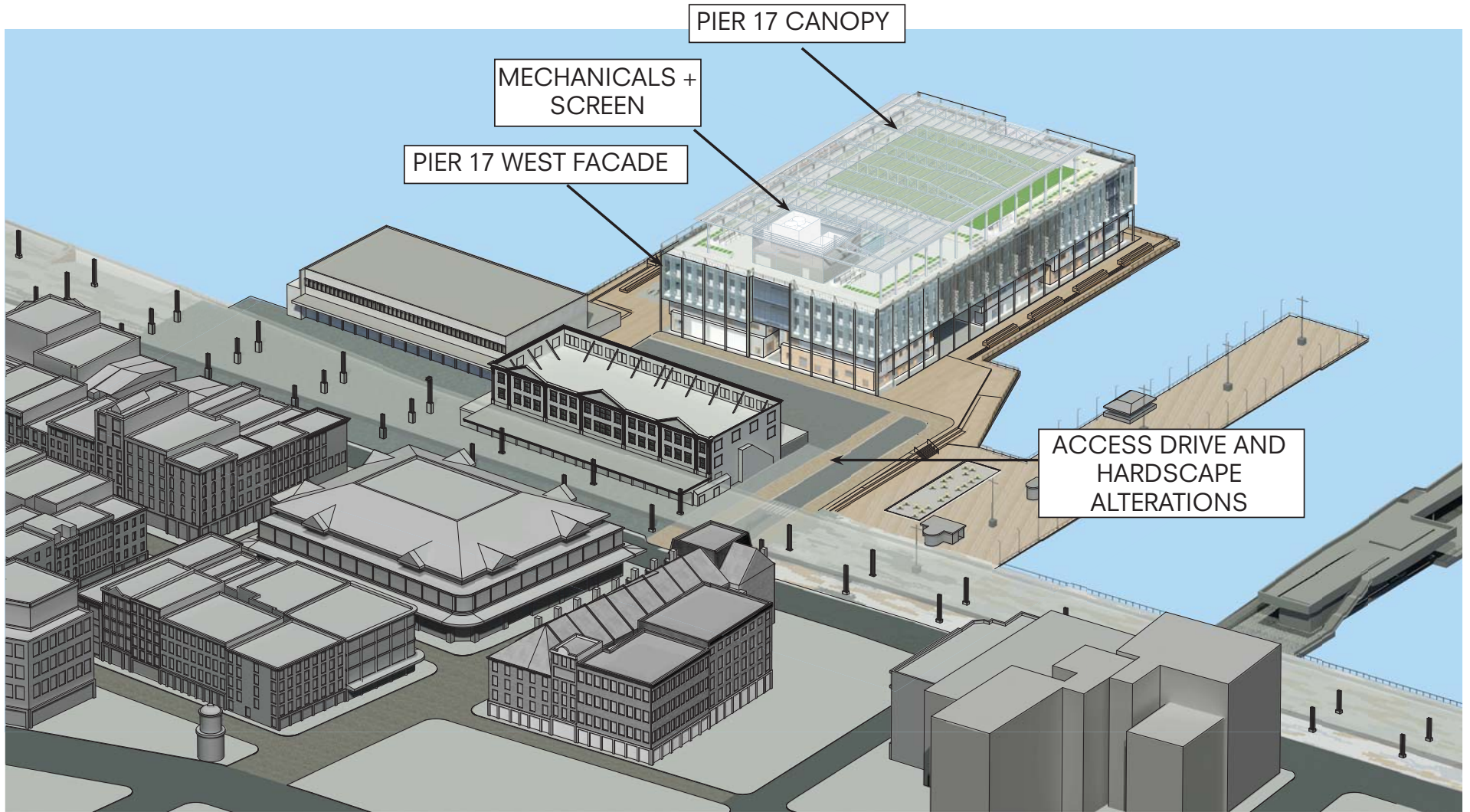
PIER 17 CANOPY, MECHANICALS, AND SCREEN

ACCESS DRIVE AND HARDSCAPE

SOUTH STREET SEAPORT // PIER 17 RENOVATION // PROPOSED DEMOLITION OF HEAD HOUSE AND LINK BUILDING



SOUTH STREET SEAPORT // PIER 17 CANOPY, MECHANICALS, + SCREEN



PIER 17 PROPOSED MODIFICATIONS

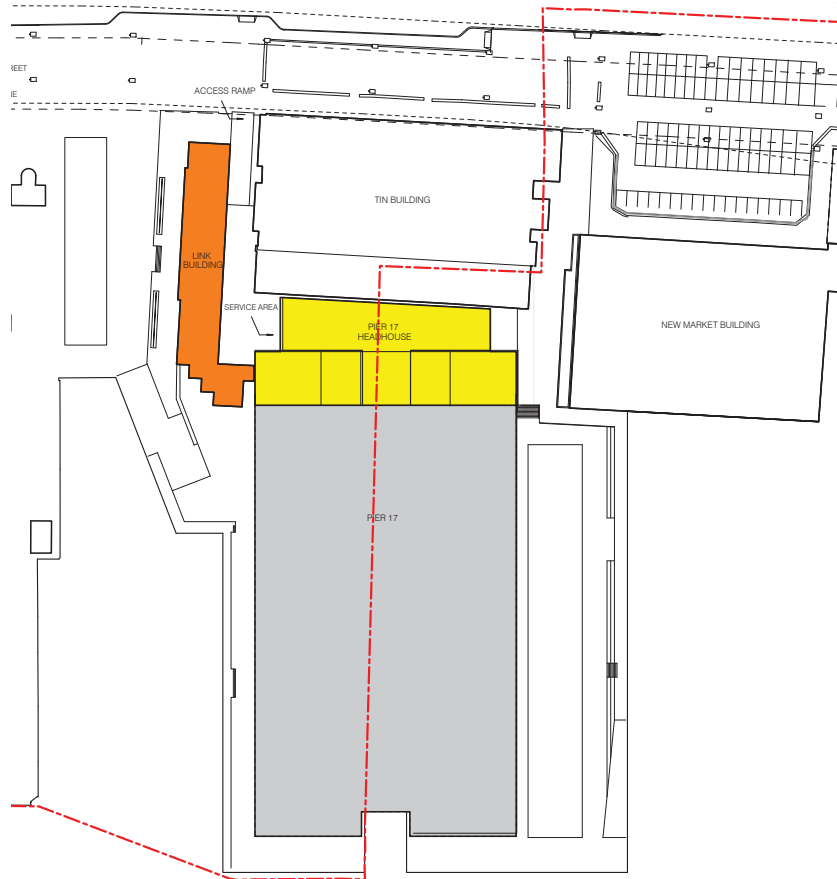
REMOVAL OF HEAD HOUSE

COMPLETION OF WEST FACADE

REMOVAL OF LINK BUILDING

**PIER 17 CANOPY, MECHANICALS, AND SCREEN
ACCESS DRIVE AND HARDSCAPE**

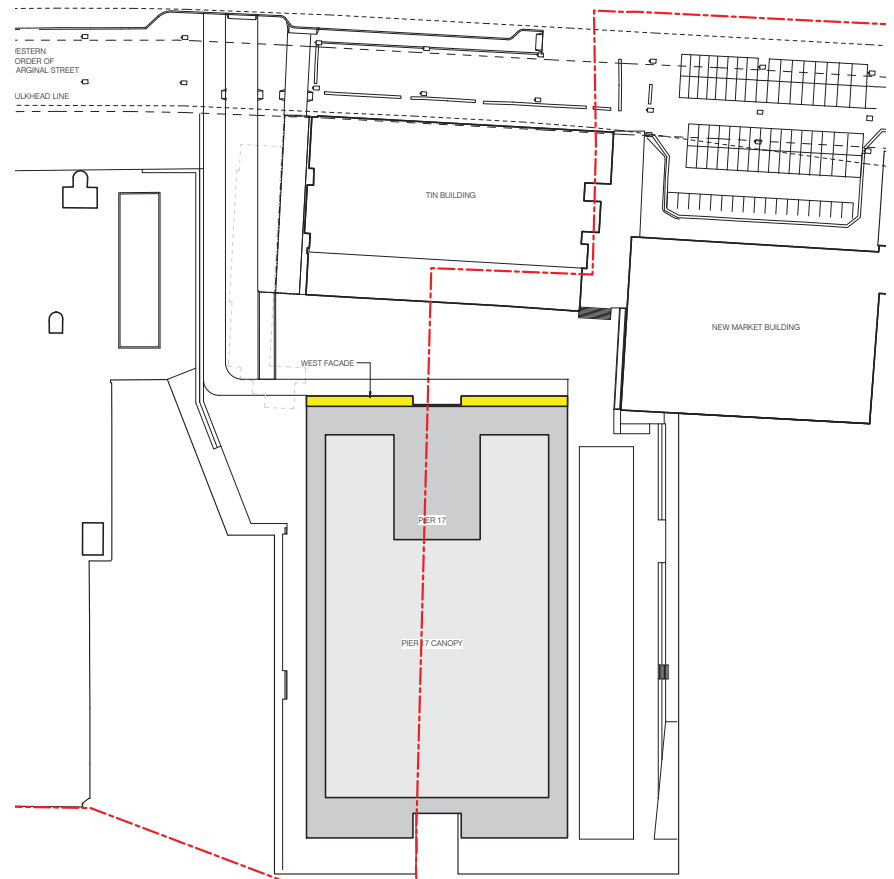
SOUTH STREET SEAPORT // PIER 17 // APPROVED & PROPOSED SITE PLAN



KEY

- BUILDINGS TO BE DEMOLISHED
- HEADHOUSE AREA TO BE UPDATED

10.15.13 APPROVED SITE PLAN



PROPOSED SITE PLAN

SOUTH STREET SEAPORT // PIER 17 // PREVIOUSLY EXISTING PIER 17 HEAD HOUSE



SOUTH STREET SEAPORT // PIER 17 // PROPOSED PIER 17 CANOPY + WEST FACADE



PIER 17 PROPOSED MODIFICATIONS

REMOVAL OF HEAD HOUSE

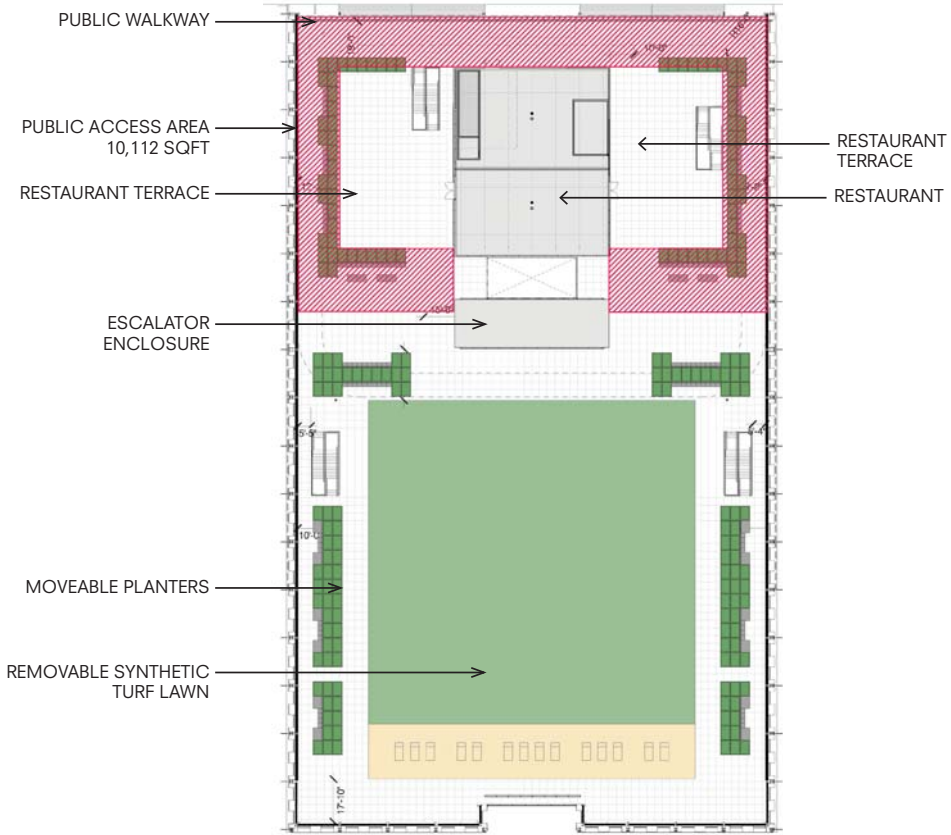
COMPLETION OF WEST FACADE

REMOVAL OF LINK BUILDING

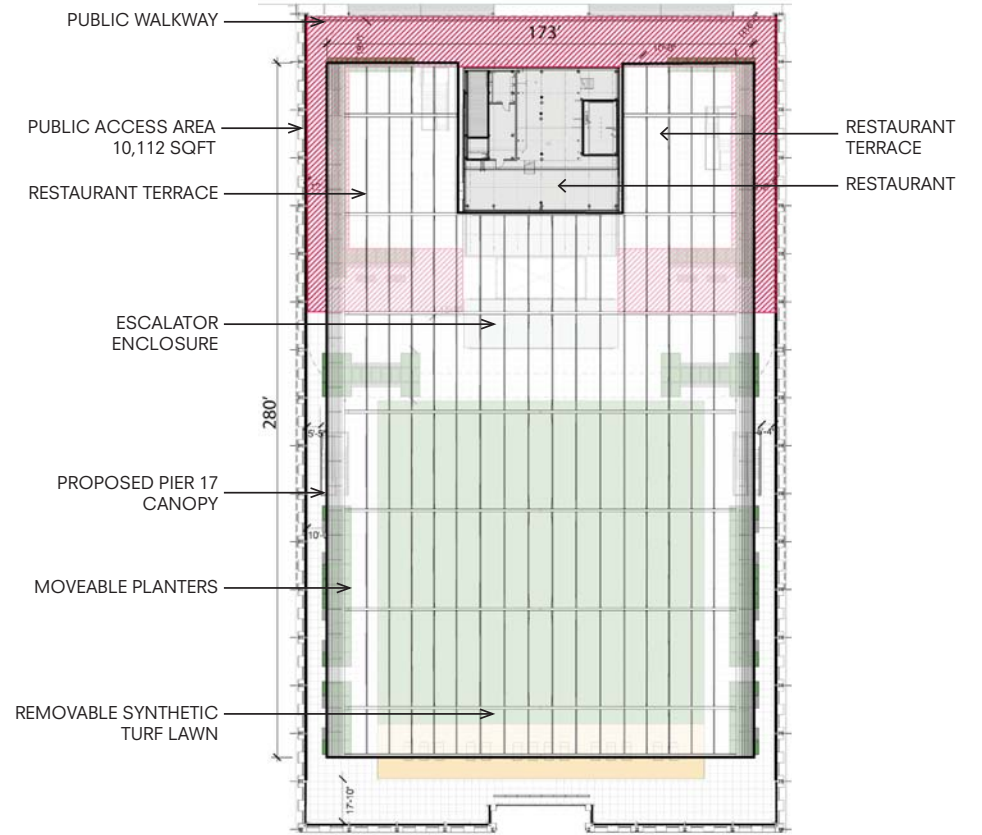
PIER 17 CANOPY, MECHANICALS, AND SCREEN

ACCESS DRIVE AND HARDSCAPE

SOUTH STREET SEAPORT // PIER 17 // PROPOSED PIER 17 CANOPY, MECHANICALS, + SCREEN // PLAN

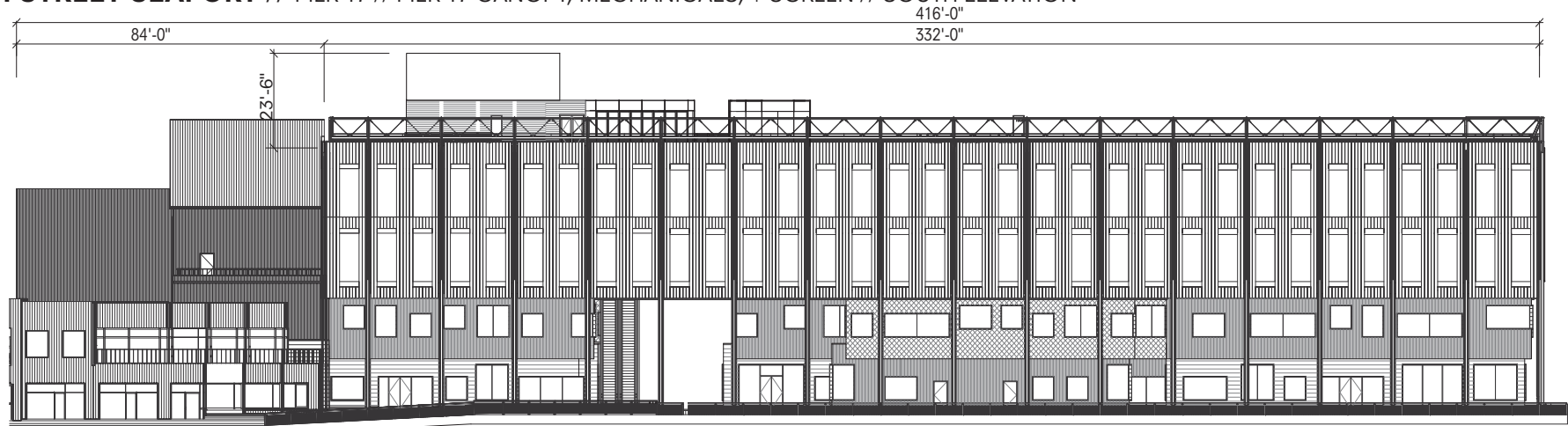


APPROVED ROOF PLAN

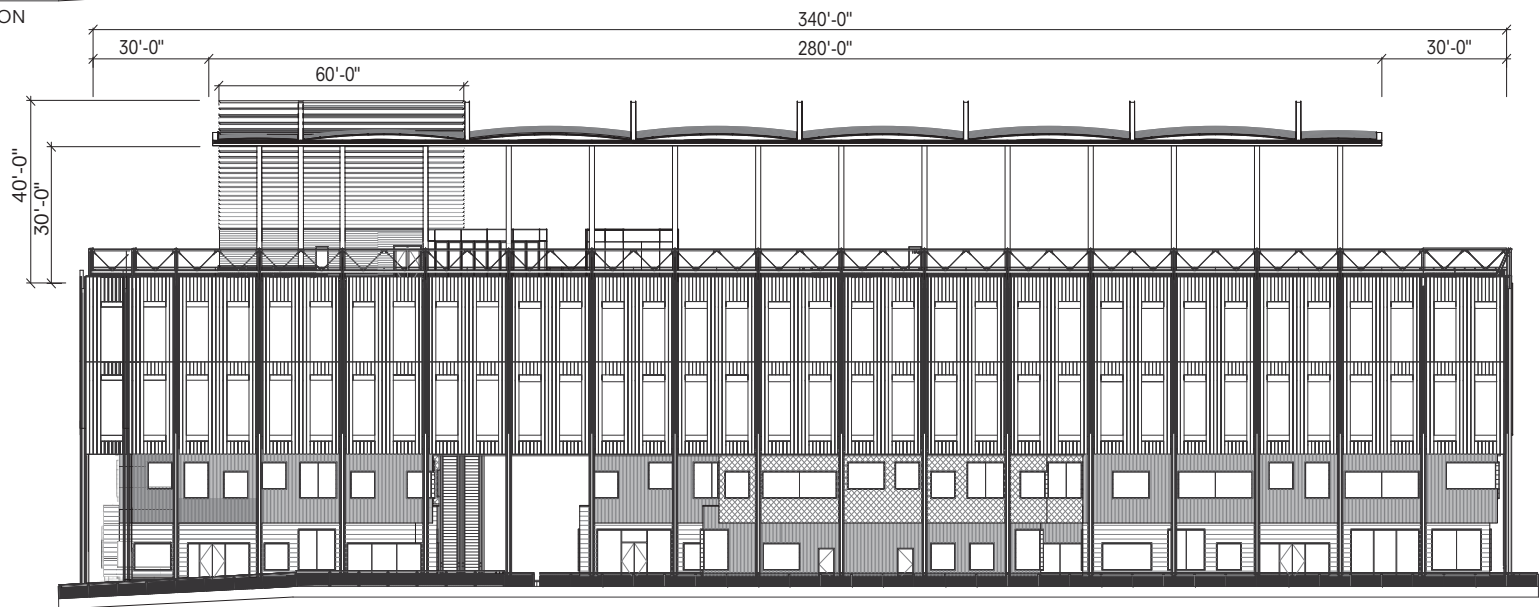


PROPOSED ROOF PLAN

SOUTH STREET SEAPORT // PIER 17 // PIER 17 CANOPY, MECHANICALS, + SCREEN // SOUTH ELEVATION

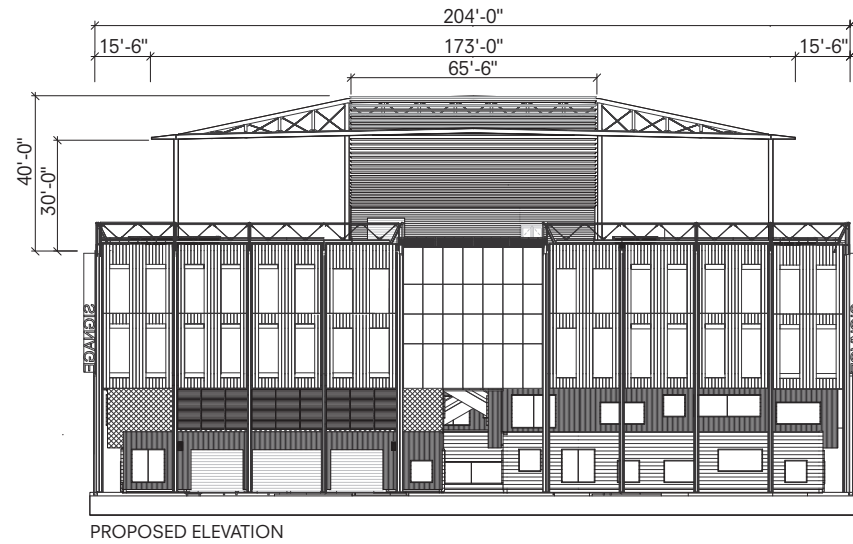
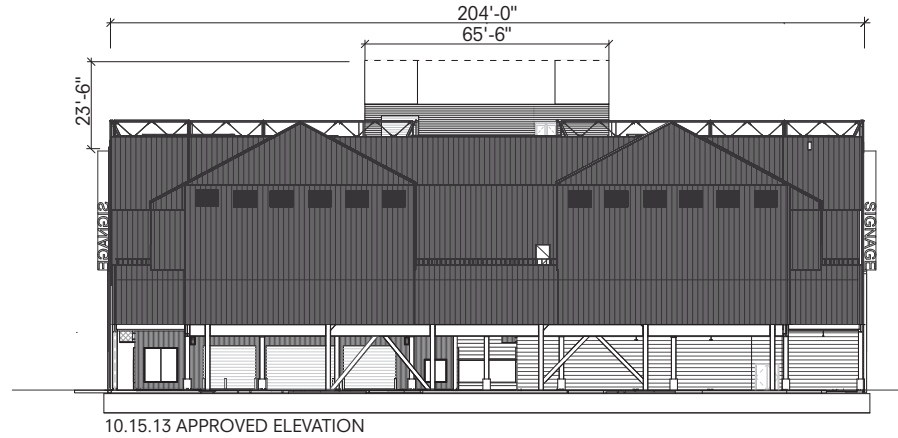


10.15.13 APPROVED ELEVATION

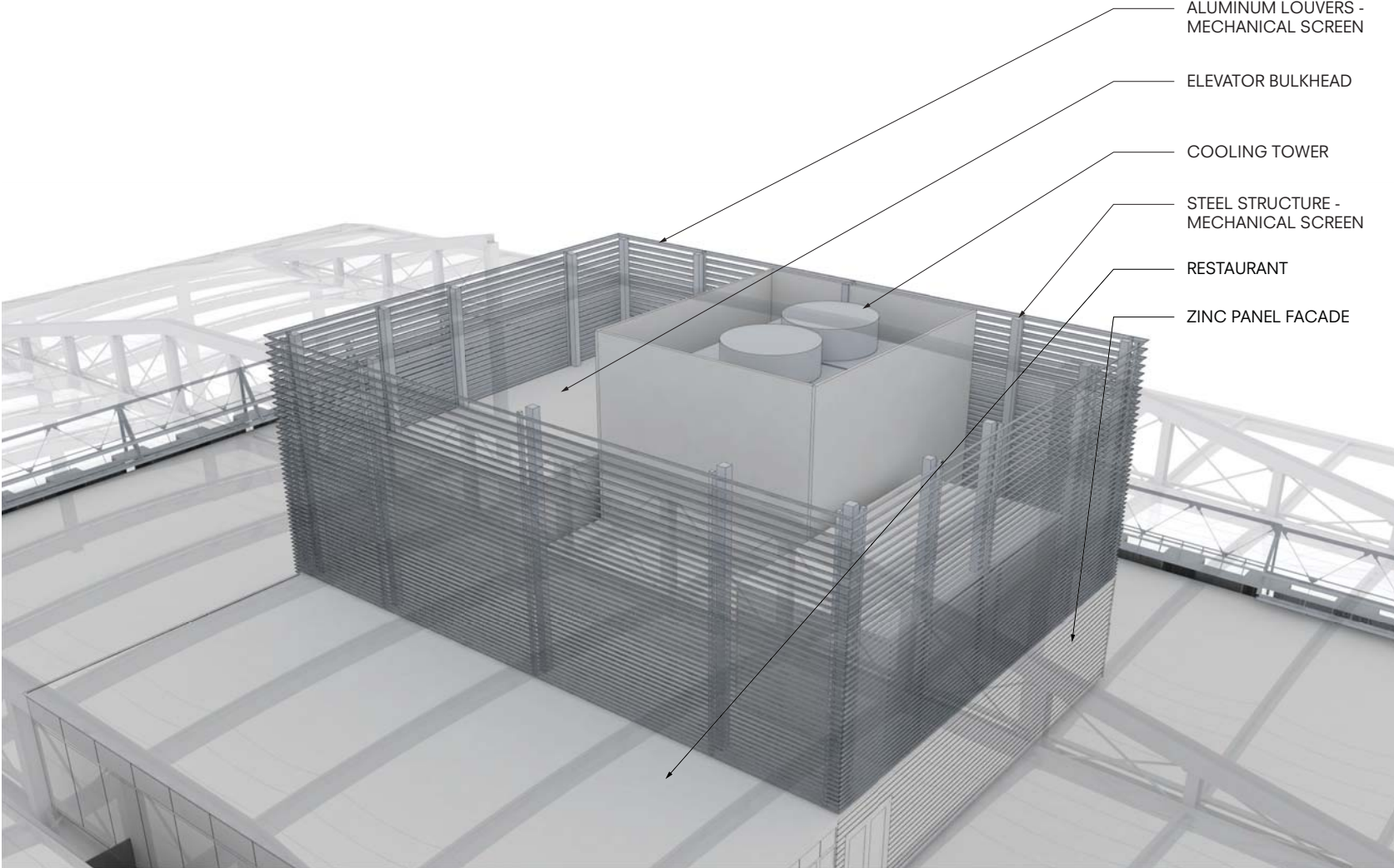


PROPOSED ELEVATION

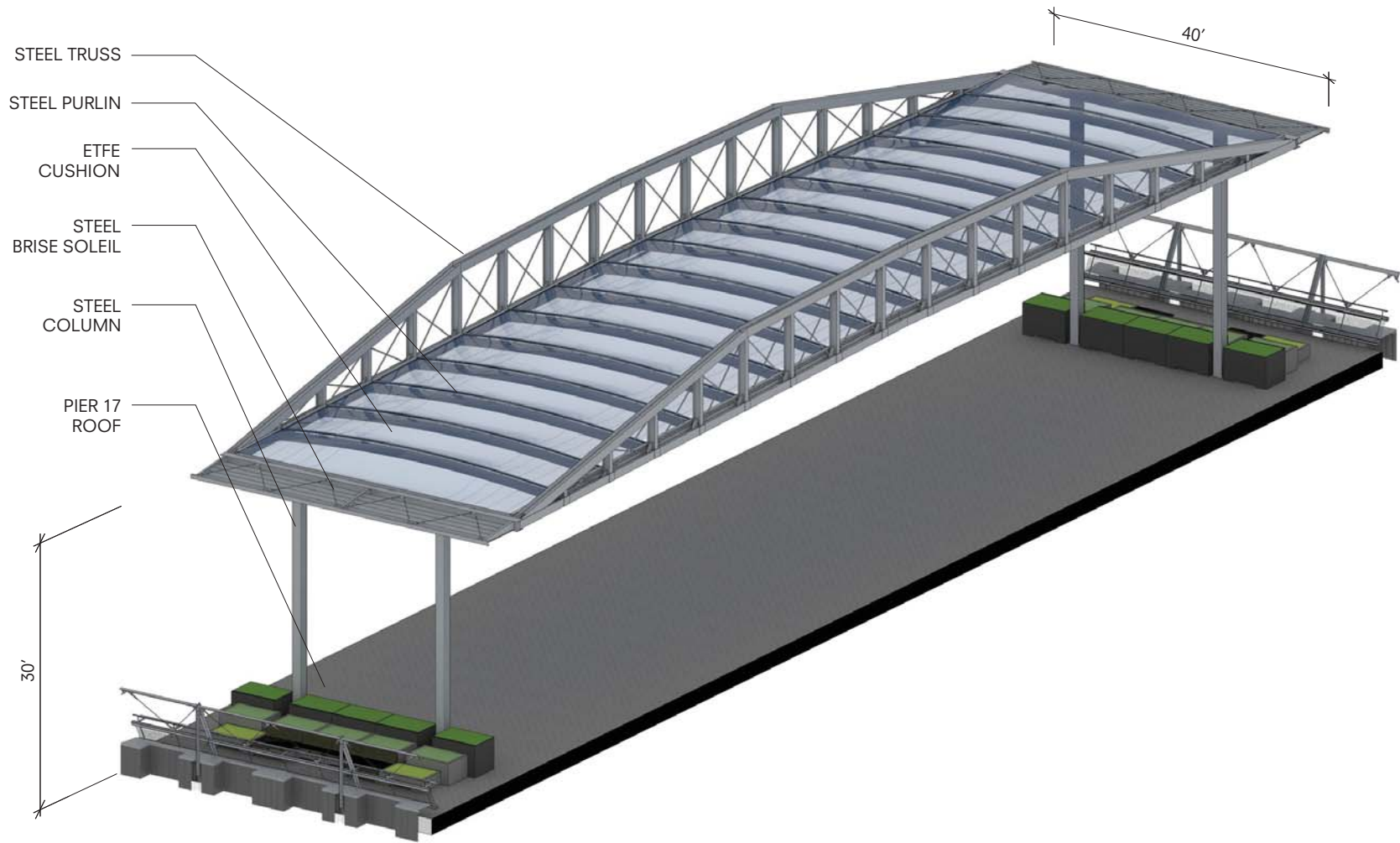
SOUTH STREET SEAPORT // PIER 17 // PIER 17 CANOPY, MECHANICALS, + SCREEN // WEST ELEVATION



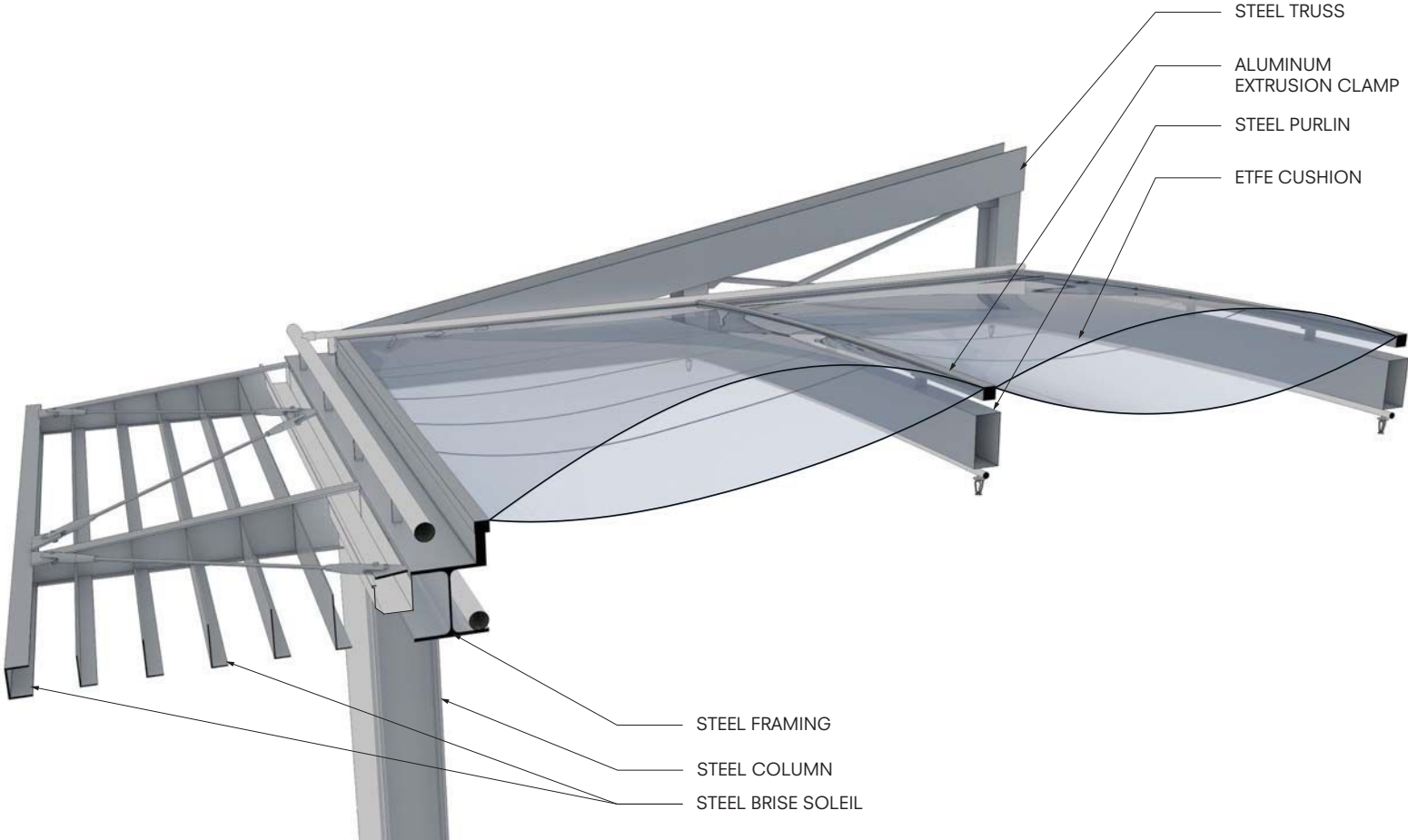
SOUTH STREET SEAPORT // PIER 17 MECHANICALS + SCREEN // DETAILS



SOUTH STREET SEAPORT // PIER 17 // PROPOSED PIER 17 CANOPY // AXON SECTION DETAIL



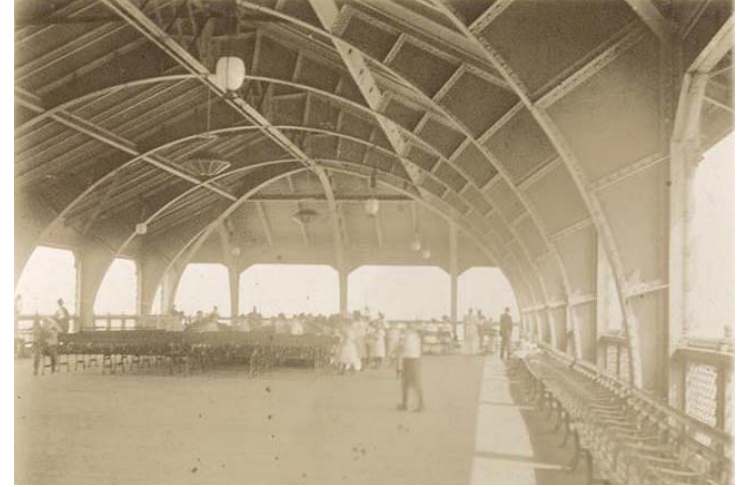
SOUTH STREET SEAPORT // PIER 17 // PROPOSED PIER 17 CANOPY // AXON SECTION DETAIL



SOUTH STREET SEAPORT // PIER 17 // PROPOSED PIER 17 CANOPY // HISTORICAL CONTEXT



Recreation pavilions along the rooftops at Municipal Ferry Terminals, South Street, 1911. (MCNY)



East 24 recreation pier, interior view, ca. 1895. (MCNY)

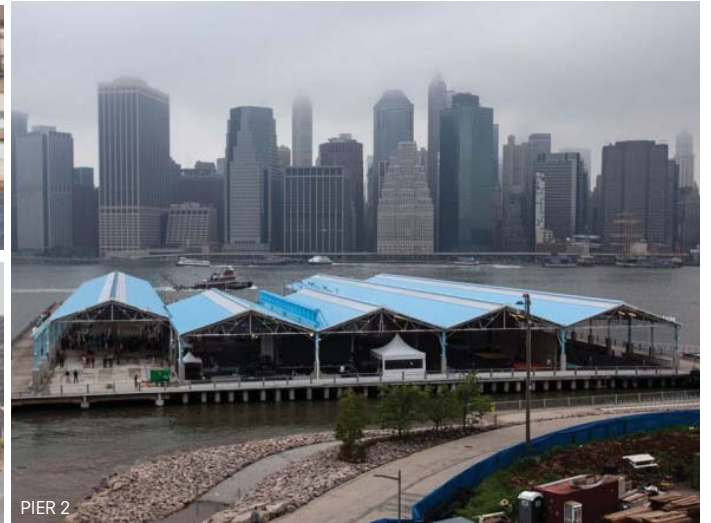
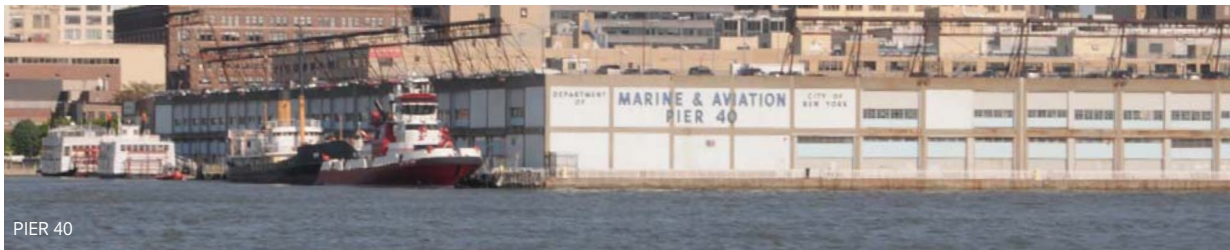


Pier 30 recreation pier in East River context, 1932. (NYPL)



Recreation pier at Pier 30, 1930. (NYPL)

SOUTH STREET SEAPORT // PIER 17 // PROPOSED PIER 17 CANOPY // NEW YORK CITY PIERS



SOUTH STREET SEAPORT // 10.15.2013 APPROVED AERIAL VIEW



SOUTH STREET SEAPORT // PROPOSED PIER 17 WITH CANOPY, MECHANICALS, + SCREEN // AERIAL VIEW



SOUTH STREET SEAPORT // PROPOSED PIER 17 WITH CANOPY, MECHANICALS, + SCREEN // AERIAL VIEW



SOUTH STREET SEAPORT // PIER 17 SOUTH FACADE // 10.15.13 APPROVED



SOUTH STREET SEAPORT // PROPOSED PIER 17 SOUTH FACADE WITH CANOPY, MECHANICALS, + SCREEN



SOUTH STREET SEAPORT // PROPOSED PIER 17 CANOPY, MECHANICALS, + SCREEN



SOUTH STREET SEAPORT // PROPOSED PIER 17 CANOPY



PIER 17 PROPOSED MODIFICATIONS
REMOVAL OF HEAD HOUSE
COMPLETION OF WEST FACADE
REMOVAL OF LINK BUILDING
PIER 17 CANOPY, MECHANICALS AND SCREEN
ACCESS DRIVE AND HARDSCAPE

SOUTH STREET SEAPORT // LANDSCAPE // PROPOSED MATERIAL PALETTE



GRANITE BELGIAN BLOCK



ASPHALT



PIER 17 PAVER



BIKE LANE PAVING



ERW ESPLANADE HEX PAVER



WOOD DECKING



BLUESTONE



CONCRETE

SOUTH STREET SEAPORT // LANDSCAPE // TIN BUILDING HISTORICAL CONTEXT



1940: THE TIN BUILDING'S HISTORIC CONTEXT IN THE WIDE EXPRESSION OF SOUTH STREET. TODAY, THE BUILDING IS ISOLATED FROM ITS HISTORICAL CONNECTIONS TO THE STREET BY THE FDR (CA. 1954). (NYC MA)

SOUTH STREET SEAPORT // LANDSCAPE // TIN BUILDING HISTORICAL CONTEXT

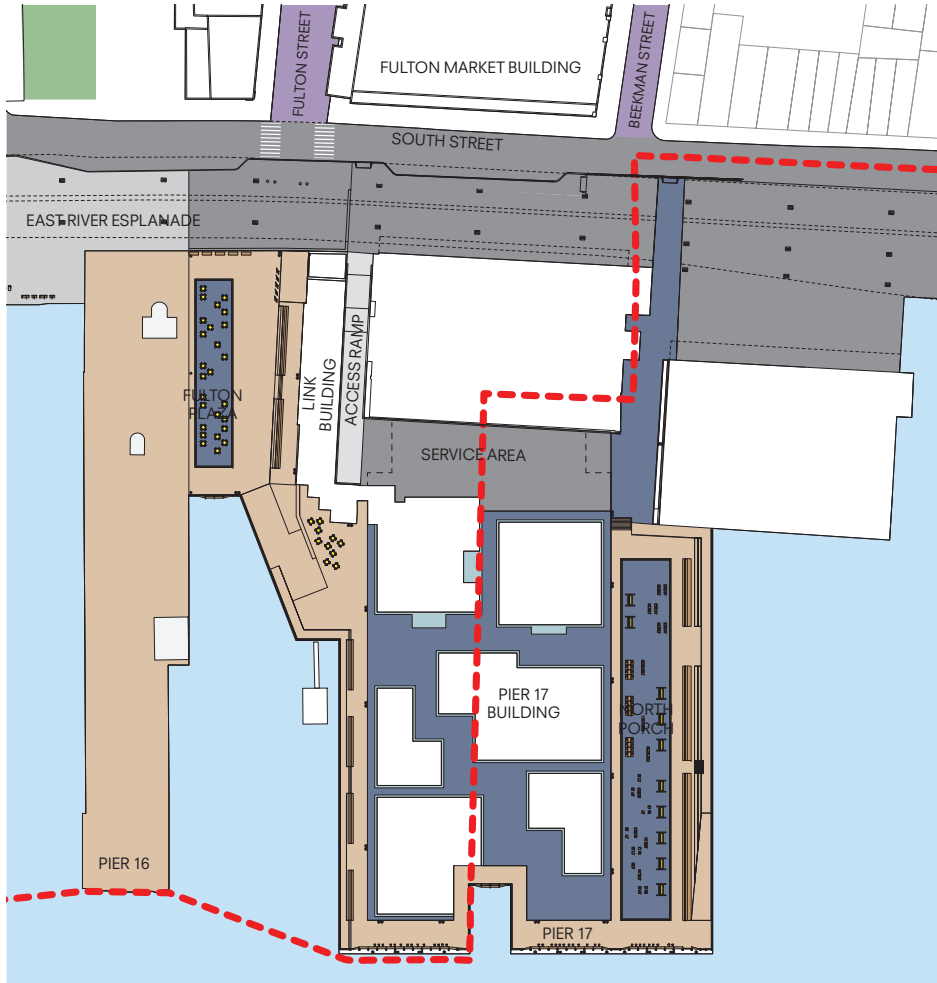


PIER 18, 1943 (LOC)

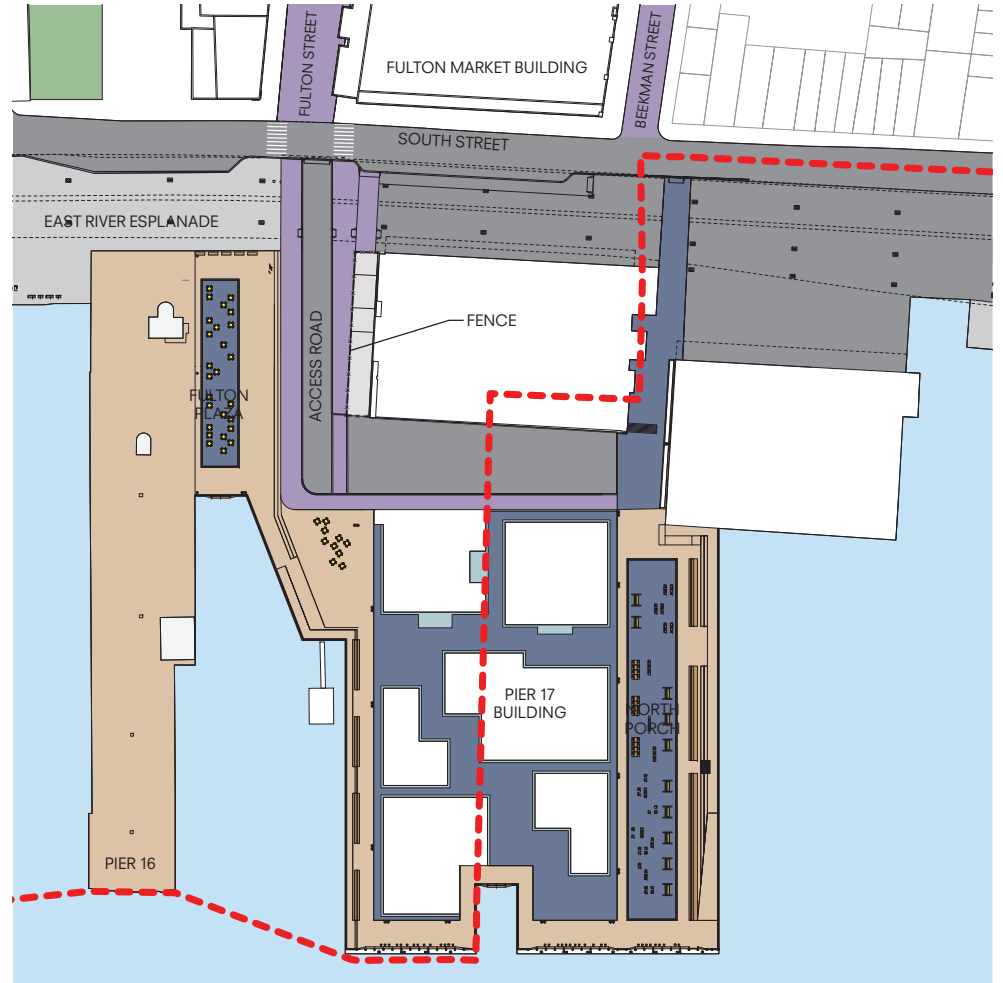


PIER 18, 1943 (LOC)

SOUTH STREET SEAPORT // LANDSCAPE // APPROVED + PROPOSED LANDSCAPE MATERIALS



10.15.13 APPROVED SITE PLAN



PROPOSED SITE PLAN



1 PAVER / STONE



2 HEX PAVING (SINGLE / 3-TONE)



3 WOOD DECKING



4 CONCRETE PAVER



5 CONCRETE



6 ASPHALT



7 GRANITE CURB



8 BLUESTONE

SOUTH STREET SEAPORT // PROPOSED PIER 17 WITH CANOPY, MECHANICALS, + SCREEN // AERIAL VIEW

