

The current proposal is:

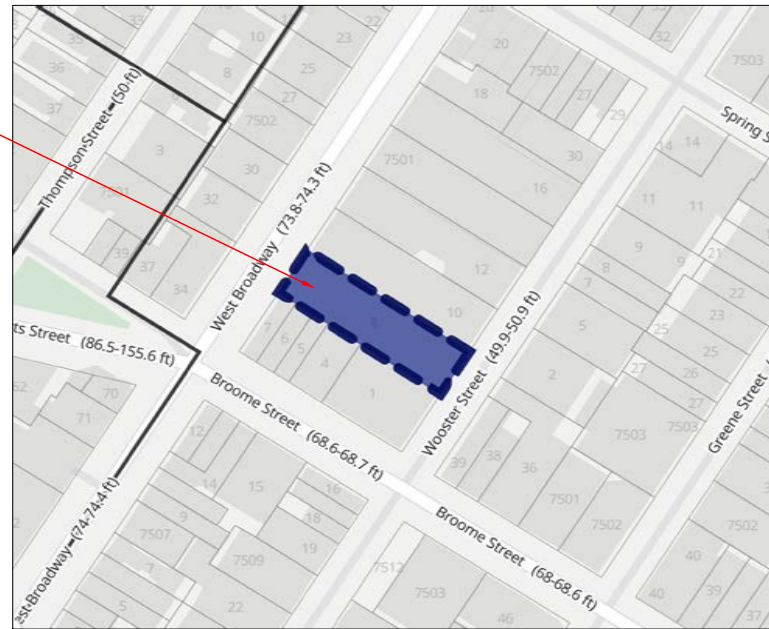
**Preservation Department – Item 3, LPC-24-06747**

**375 West Broadway – SoHo-Cast Iron Historic District**  
**Borough of Manhattan**

**Note: this is a Public Meeting item. No public testimony will be received today as the hearing on this item is closed**

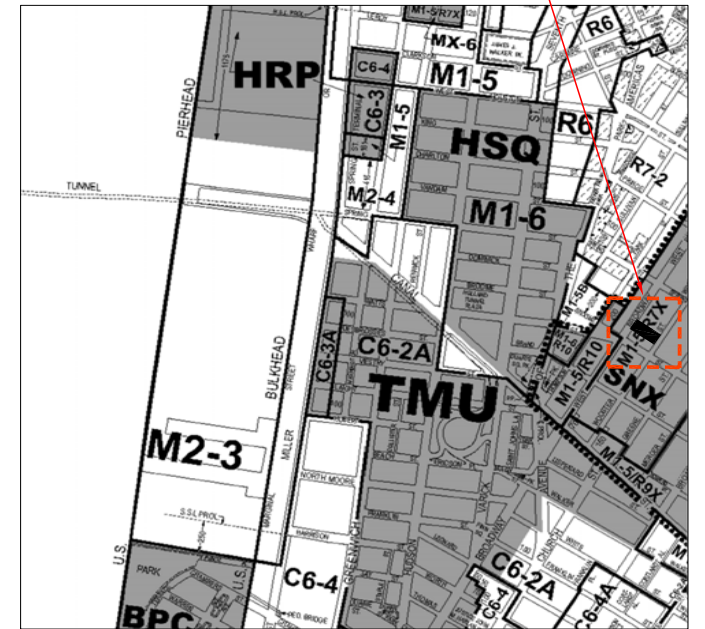


PROJECT LOCATION



1 TAX LOT PLAN  
SCALE: N.T.S

PROJECT LOCATION



2 ZONING PLAN  
SCALE: N.T.S

# TITLE SHEET

375 W BROADWAY, NEW YORK, NY  
 JANUARY, 22, 2024  
 UPDATED ON APRIL 11, 2024  
 PROJECT NUMBER: 23-146

**SRAA+E**  
 Architecture & Engineering, P.C.



**LEGEND:**

	PRESENTATION
	APPENDIX

**NOTE:** ASTERISKED ARE SIMILAR PHOTOS WITH MOCK-UP

# SITE PLAN

375 W BROADWAY, NEW YORK, NY  
 JANUARY, 22, 2024  
 UPDATED ON APRIL 11, 2024  
 PROJECT NUMBER: 23-146

**SRAA+E**  
 Architecture & Engineering, P.C.

EXISTING

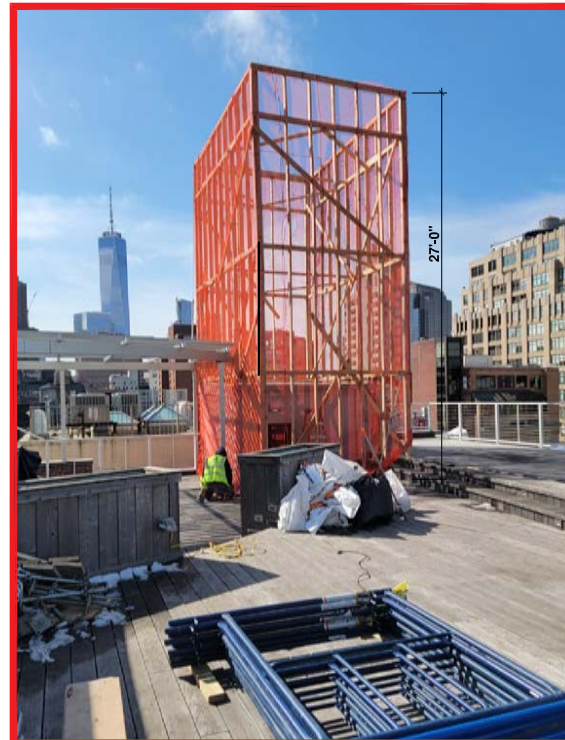
PREVIOUSLY PROPOSED

NEW PROPOSAL

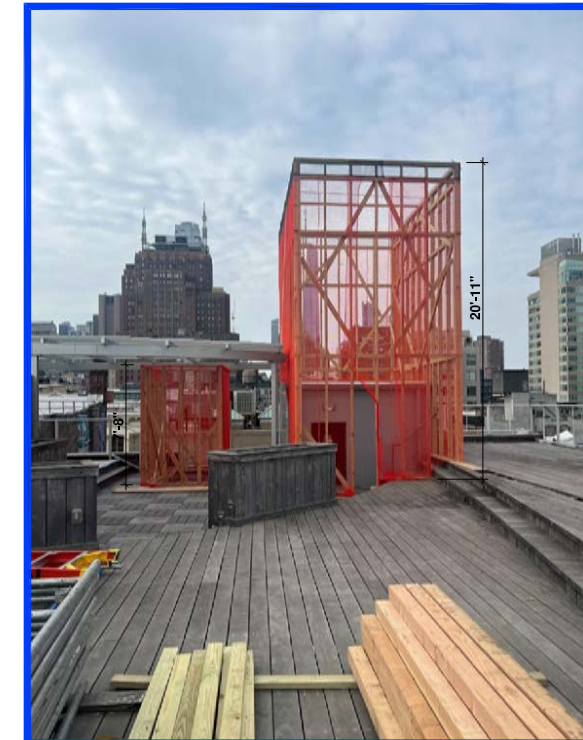
VIEW #1



1 VIEW OF PASSENGER ELEVATOR FROM NORTH SIDE




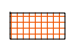
1\* VIEW OF PASSENGER ELEVATOR FROM NORTH SIDE



1\* VIEW OF PASSENGER ELEVATOR FROM NORTH SIDE

ENLARGED VIEW #1

**LEGEND:**

-  2 LEVELS
-  4 LEVELS

# SIGHT LINE PHOTOS

375 W BROADWAY, NEW YORK, NY  
JANUARY, 22, 2024  
UPDATED ON APRIL 11, 2024  
PROJECT NUMBER: 23-146

**SRAA+E**  
Architecture & Engineering, P.C.

**EXISTING**

**PREVIOUSLY PROPOSED**

**NEW PROPOSAL**

**VIEW #2**



2 VIEW FROM WEST BROADWAY



2\* VIEW FROM WEST BROADWAY



2\* VIEW FROM WEST BROADWAY

**ENLARGED VIEW #2**





2\* ENLARGED VIEW FROM WEST BROADWAY



2\* ENLARGED VIEW FROM WEST BROADWAY

**LEGEND:**

-  2 LEVELS
-  4 LEVELS

**SIGHT LINE PHOTOS**

375 W BROADWAY, NEW YORK, NY  
JANUARY, 22, 2024  
UPDATED ON APRIL 11, 2024  
PROJECT NUMBER: 23-146

**SRAA+E**  
Architecture & Engineering, P.C.

EXISTING

PREVIOUSLY PROPOSED

NEW PROPOSAL

VIEW #3



3 VIEW FROM WEST BROADWAY



3\* VIEW FROM WEST BROADWAY



3\* VIEW FROM WEST BROADWAY

ENLARGED VIEW #3





3\* ENLARGED VIEW FROM WEST BROADWAY



3\* ENLARGED VIEW FROM WEST BROADWAY

**LEGEND:**

-  2 LEVELS
-  4 LEVELS

# SIGHT LINE PHOTOS

375 W BROADWAY, NEW YORK, NY  
JANUARY, 22, 2024  
UPDATED ON APRIL 11, 2024  
PROJECT NUMBER: 23-146

**SRAA+E**  
Architecture & Engineering, P.C.

**EXISTING**

**PREVIOUSLY PROPOSED**

**NEW PROPOSAL**

**VIEW #4**



4 VIEW FROM CORNER OF 6TH AVE & WATTS ST

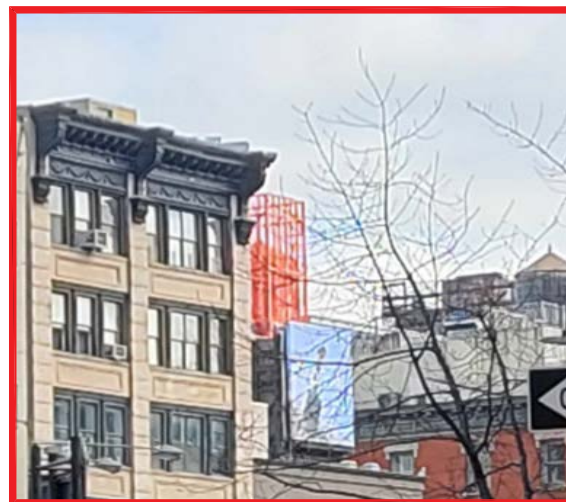


4\* VIEW FROM CORNER OF 6TH AVE & WATTS ST



4\* VIEW FROM CORNER OF 6TH AVE & WATTS ST

**ENLARGED VIEW #4**

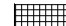



4\* ENLARGED VIEW FROM CORNER



4\* ENLARGED VIEW FROM CORNER

**LEGEND:**

-  2 LEVELS
-  4 LEVELS

**SIGHT LINE PHOTOS**

375 W BROADWAY, NEW YORK, NY  
JANUARY, 22, 2024  
UPDATED ON APRIL 11, 2024  
PROJECT NUMBER: 23-146

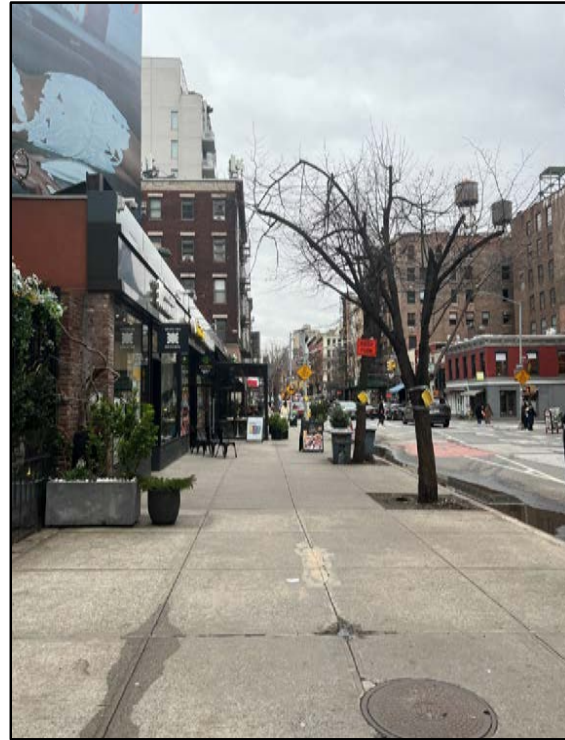
**SRAA+E**  
Architecture & Engineering, P.C.

**EXISTING**

**PREVIOUSLY PROPOSED**

**NEW PROPOSAL**

**VIEW #5**



5 VIEW FROM NORTHWEST CORNER OF CANAL STREET



5\* VIEW FROM NORTHWEST CORNER OF CANAL STREET



5\* VIEW FROM NORTHWEST CORNER OF CANAL STREET

**ENLARGED VIEW #5**


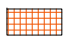


5\* ENLARGED VIEW FROM NORTHWEST CORNER



5\* ENLARGED VIEW FROM NORTHWEST CORNER

**LEGEND:**

-  2 LEVELS
-  4 LEVELS

**SIGHT LINE PHOTOS**

375 W BROADWAY, NEW YORK, NY  
JANUARY, 22, 2024  
UPDATED ON APRIL 11, 2024  
PROJECT NUMBER: 23-146

**SRAA+E**  
Architecture & Engineering, P.C.



EXISTING

PREVIOUSLY PROPOSED

NEW PROPOSAL

VIEW #6



6 VIEW FROM CORNER OF SPRING ST & W BROADWAY



6\* VIEW FROM CORNER OF SPRING ST & W BROADWAY



6\* VIEW FROM CORNER OF SPRING ST & W BROADWAY

ENLARGED VIEW #6




6\* ENLARGED VIEW FROM CORNER



6\* ENLARGED VIEW FROM CORNER

**LEGEND:**

-  2 LEVELS
-  4 LEVELS

# SIGHT LINE PHOTOS

375 W BROADWAY, NEW YORK, NY  
JANUARY, 22, 2024  
UPDATED ON APRIL 11, 2024  
PROJECT NUMBER: 23-146

**SRAA+E**  
Architecture & Engineering, P.C.



**LEGEND**  
 ■ EXISTING ROOFTOP EXTENSIONS

# SITE PLAN- EXISTING ROOFTOP EXTENSIONS

375 W BROADWAY, NEW YORK, NY  
 JANUARY, 22, 2024  
 UPDATED ON APRIL 11, 2024  
 PROJECT NUMBER: 23-146

**SRAA+E**  
 Architecture & Engineering, P.C.



17 VIEW FROM CORNER OF W BROADWAY & BROOME  
LPC-19-8194



18 VIEW FROM CORNER OF W BROADWAY & WATTS ST  
LPC-19-20218



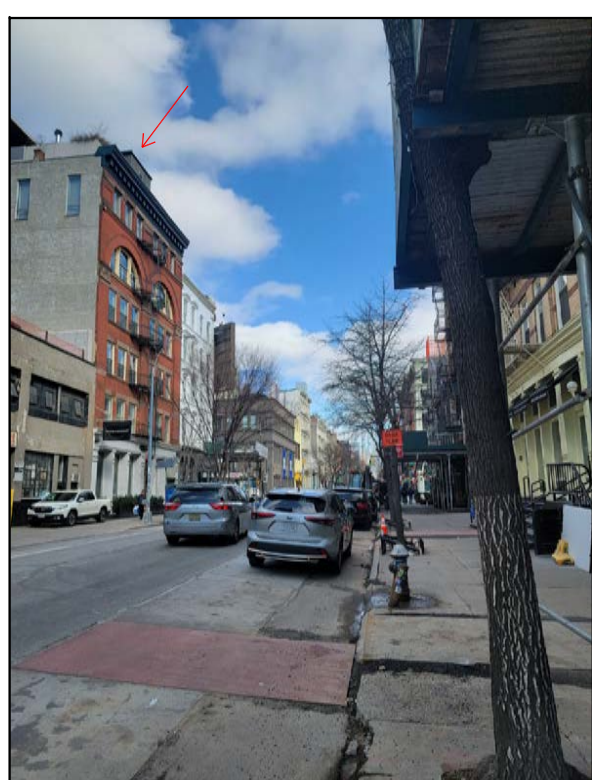
19 VIEW FROM BROOME ST  
NOT IN SOHO DISTRICT



20 VIEW FROM BROOME ST  
LPC-19-39903



21 VIEW FROM WATTS ST  
NOT IN SOHO DISTRICT



22 VIEW FROM WEST BROADWAY  
NOT IN SOHO DISTRICT



23 VIEW FROM CORNER OF W BROADWAY & GRAND ST  
NEW CONSTRUCTION



24 VIEW FROM WOOSTER ST  
LPC-18-4129

# EXISTING ROOFTOP EXTENSIONS PHOTOS

375 W BROADWAY, NEW YORK, NY  
JANUARY, 22, 2024  
UPDATED ON APRIL 11, 2024  
PROJECT NUMBER: 23-146

**SRAA+E**  
Architecture & Engineering, P.C.



25 VIEW FROM CORNER OF BROOME ST & GREENE ST  
LPC-19-7387



26 VIEW FROM BROOME ST  
LPC-24-05831

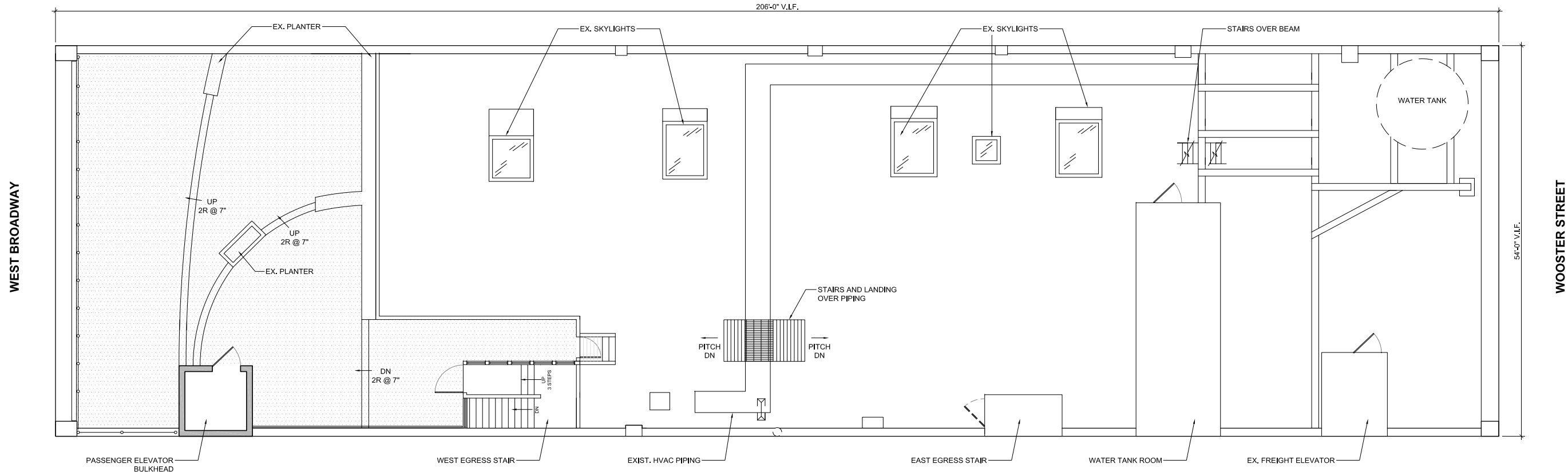


27 VIEW FROM W BROADWAY  
VIO-23-0166

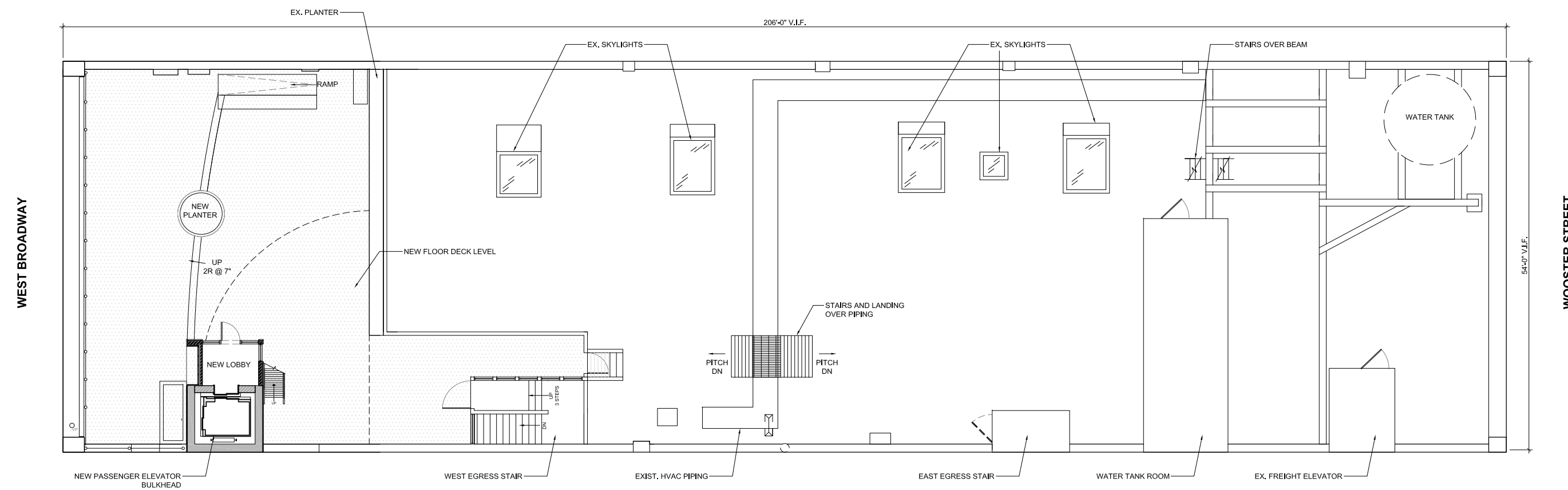
# EXISTING ROOFTOP EXTENSIONS PHOTOS

375 W BROADWAY, NEW YORK, NY  
JANUARY, 22, 2024  
UPDATED ON APRIL 11, 2024  
PROJECT NUMBER: 23-146

**SRAA+E**  
Architecture & Engineering, P.C.



1 EXISTING ROOF PLAN  
SCALE: 1/8" = 1'-0"

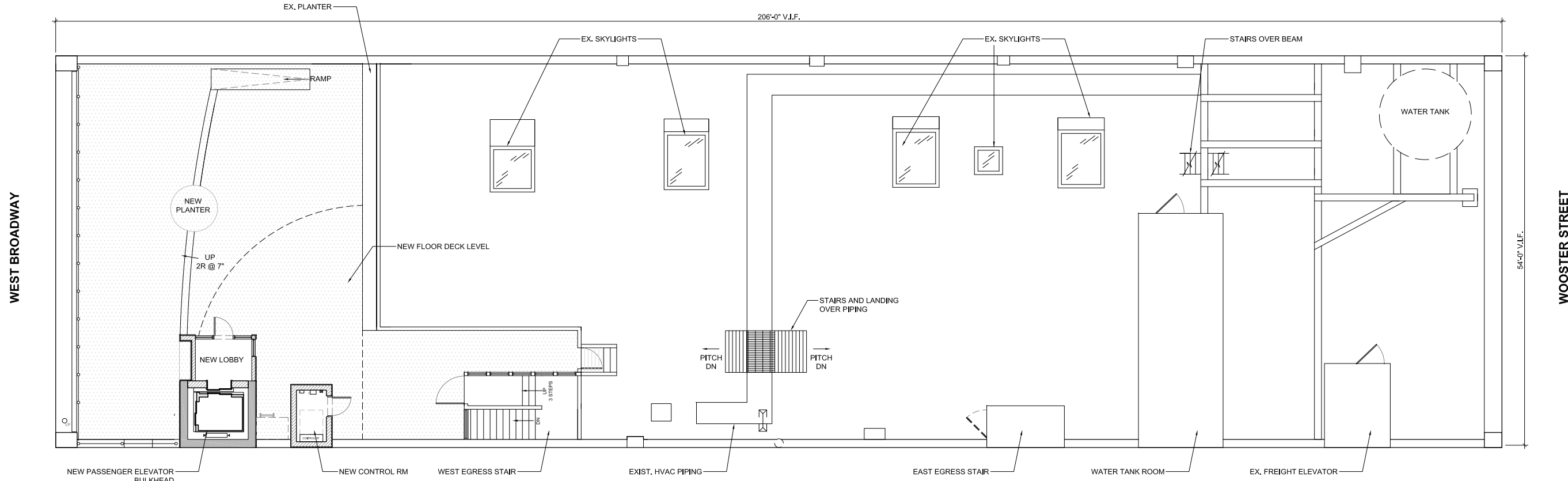


2 PREVIOUSLY PROPOSED ROOF PLAN  
SCALE: 1/8" = 1'-0"

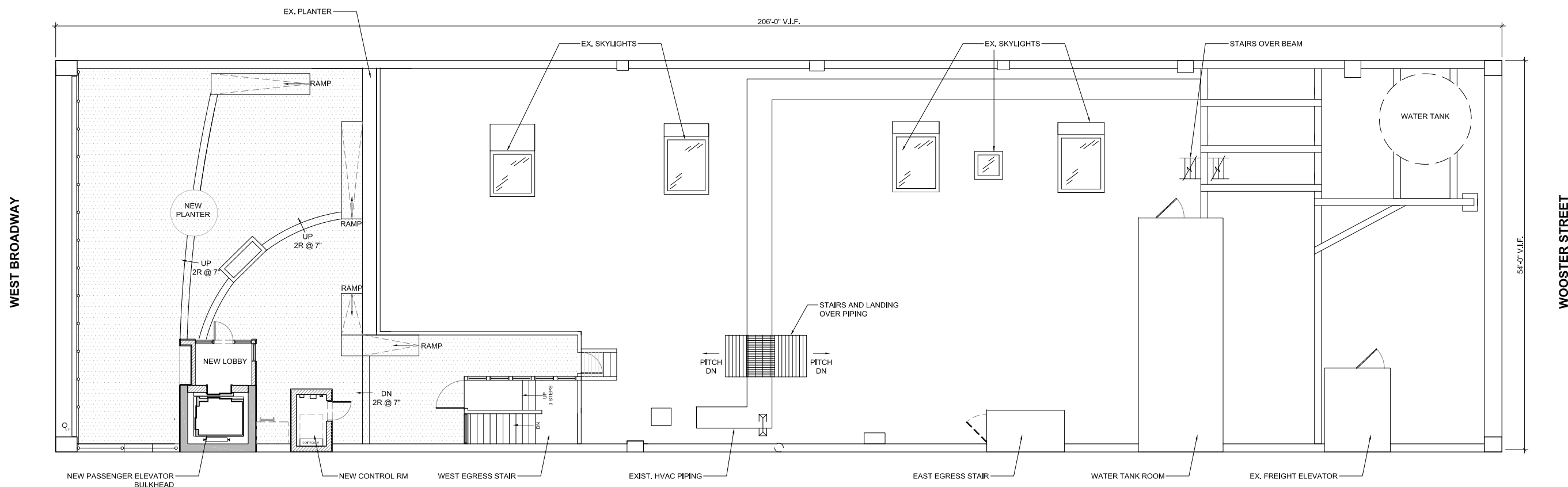
# EXISTING & PREVIOUSLY PROPOSED ROOF PLANS

375 W BROADWAY, NEW YORK, NY  
JANUARY, 22, 2024  
UPDATED ON APRIL 11, 2024  
PROJECT NUMBER: 23-146

**SRAA+E**  
Architecture & Engineering, P.C.



**1 NEW PROPOSAL ROOF PLAN**  
SCALE: 1/8" = 1'-0"

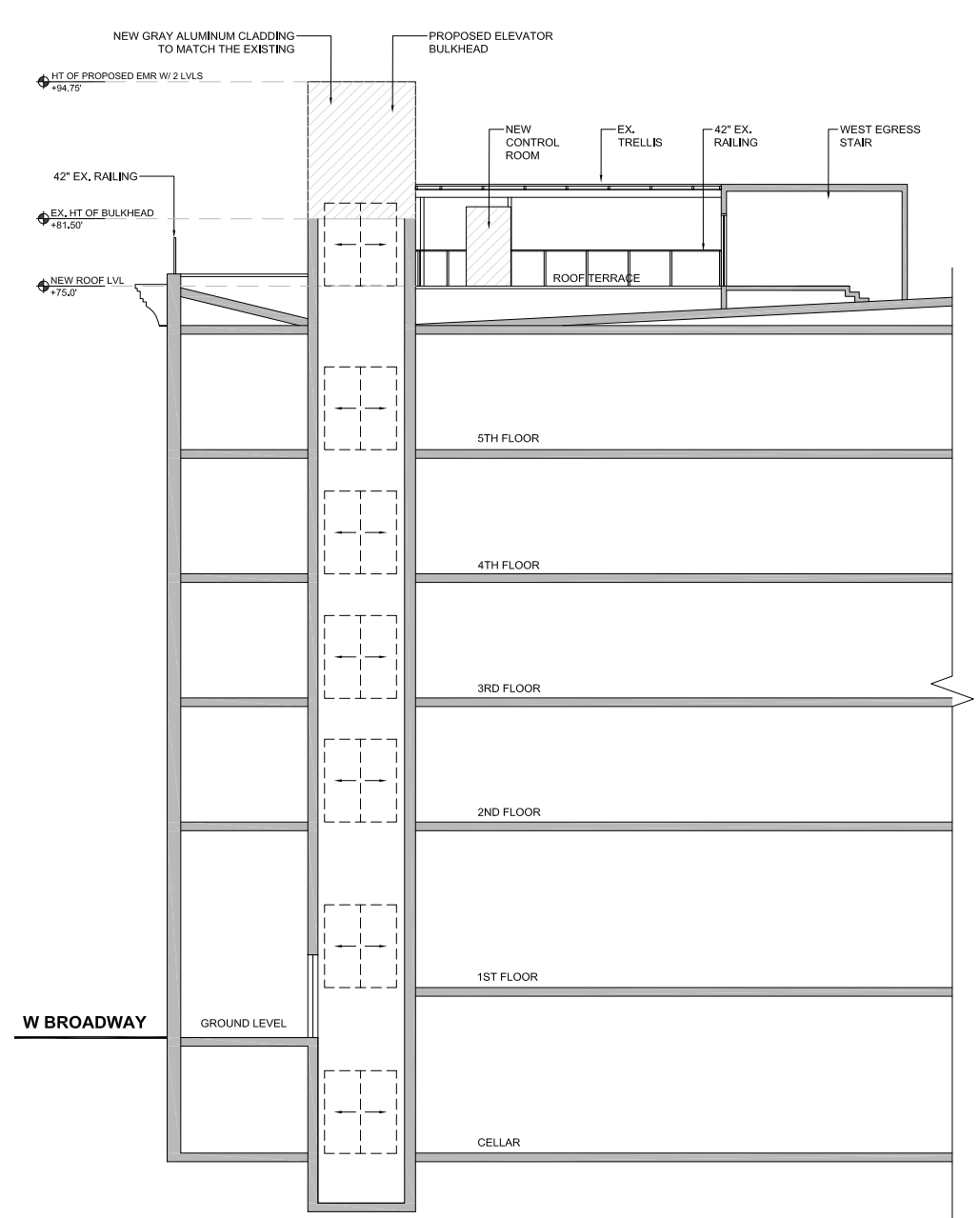
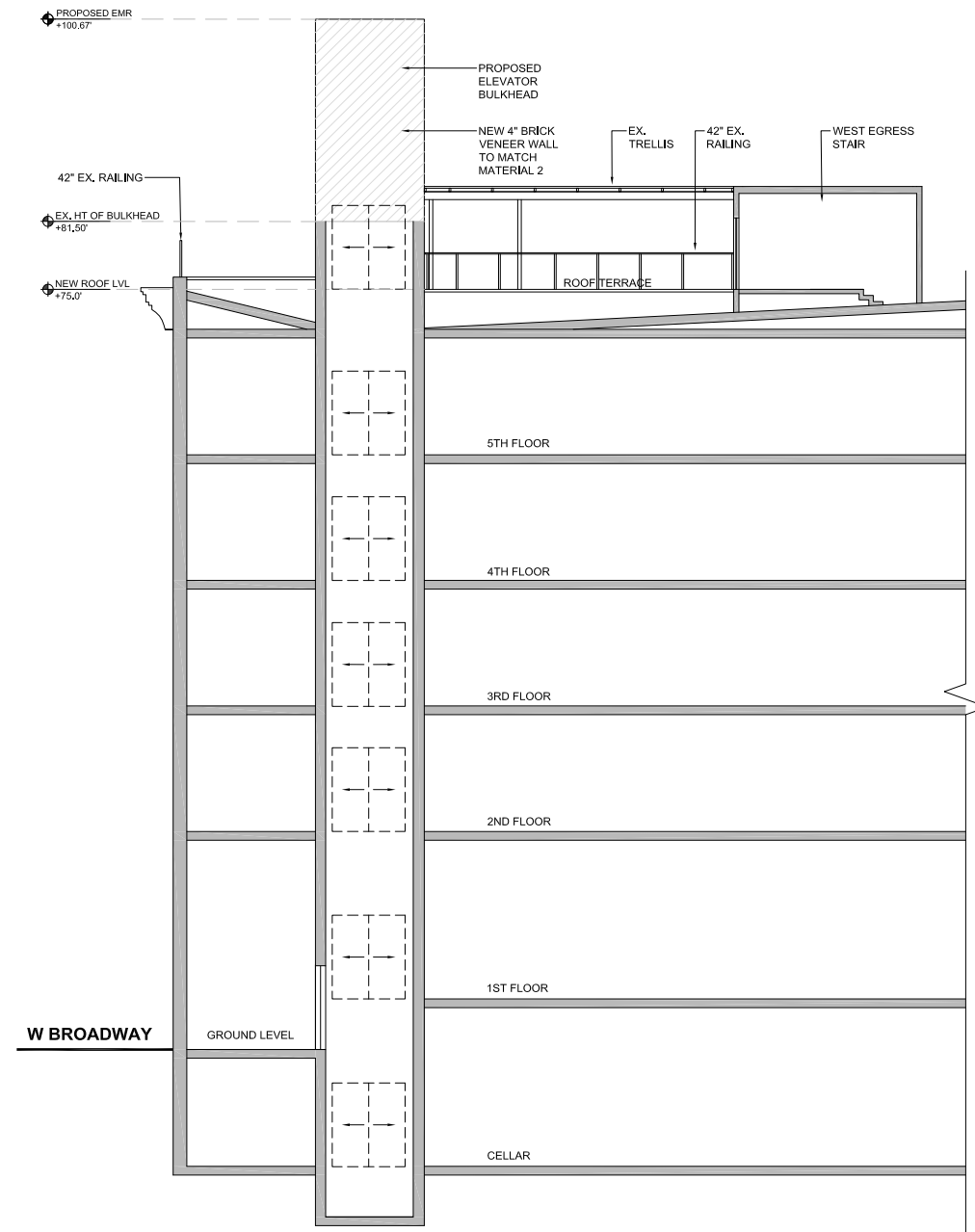
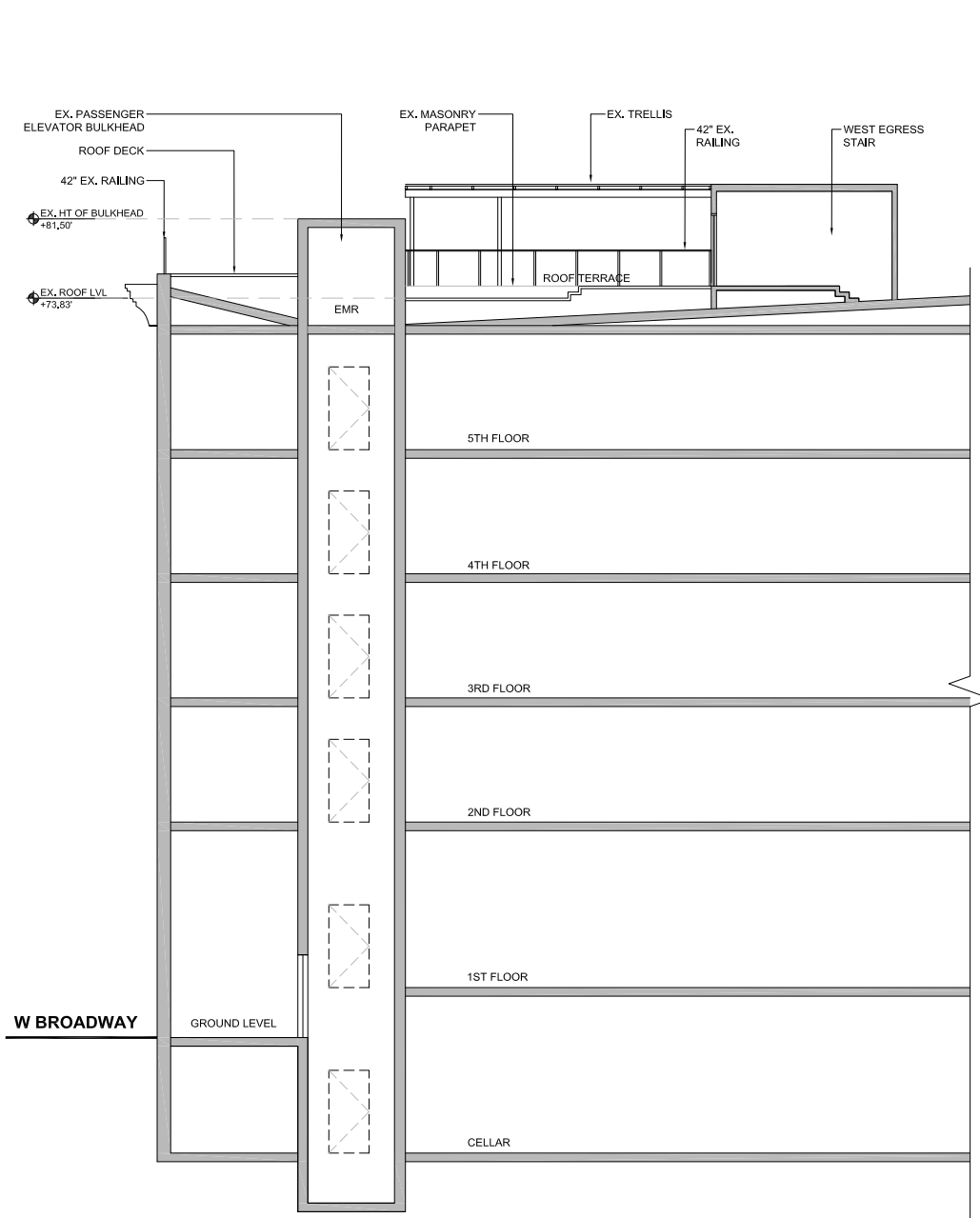


**2 NEW PROPOSAL ALTERNATIVE ROOF PLAN**  
SCALE: 1/8" = 1'-0"

# NEW PROPOSAL & ALTERNATIVE ROOF PLANS

375 W BROADWAY, NEW YORK, NY  
JANUARY, 22, 2024  
UPDATED ON APRIL 11, 2024  
PROJECT NUMBER: 23-146

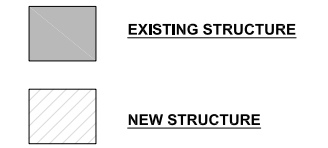
**SRAA+E**  
Architecture & Engineering, P.C.



1 PARTIAL SECTION - EXISTING CONDITIONS  
SCALE: 1/8" = 1'-0"

2 PARTIAL SECTION - PREVIOUSLY PROPOSED WORK  
SCALE: 1/8" = 1'-0"

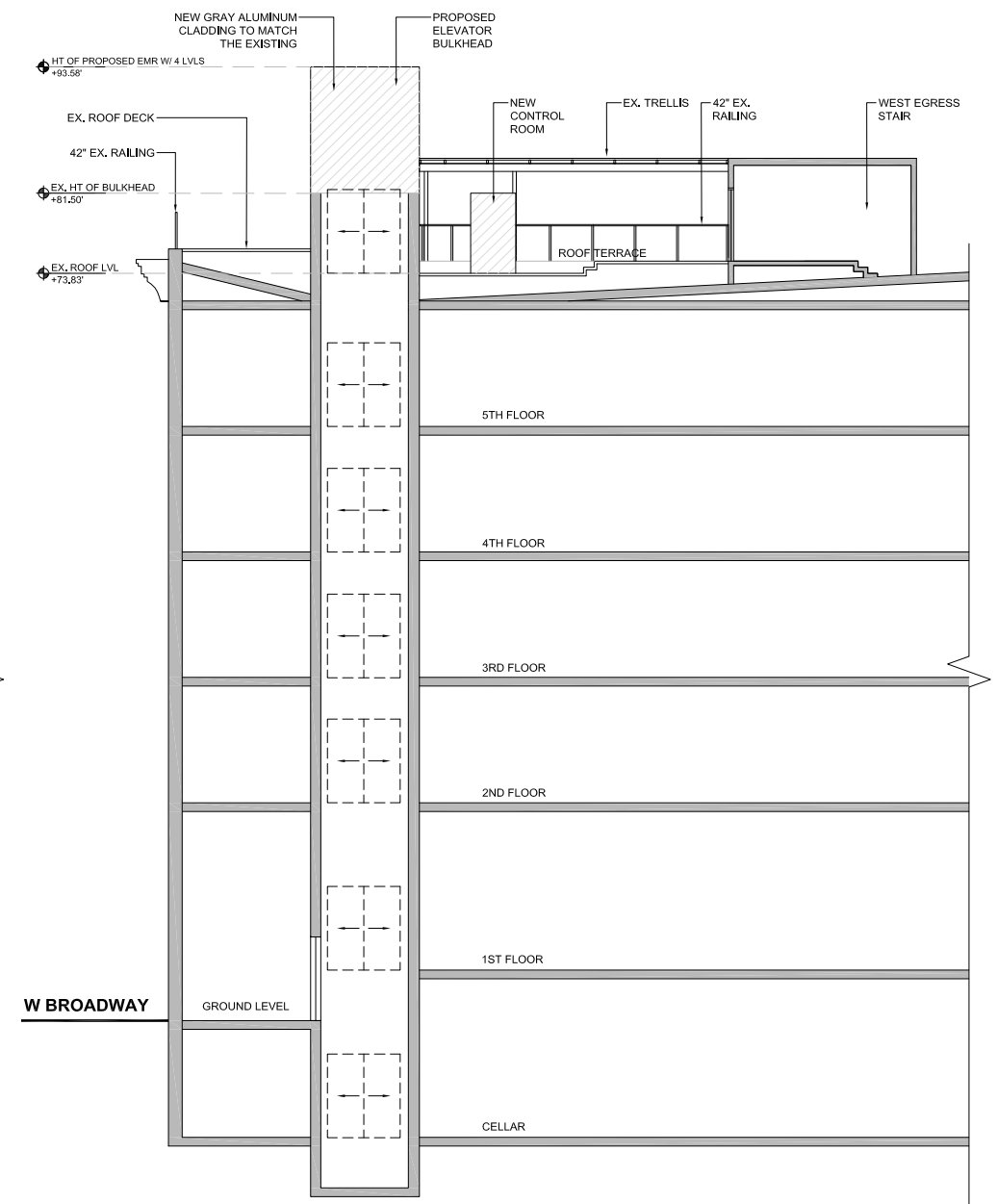
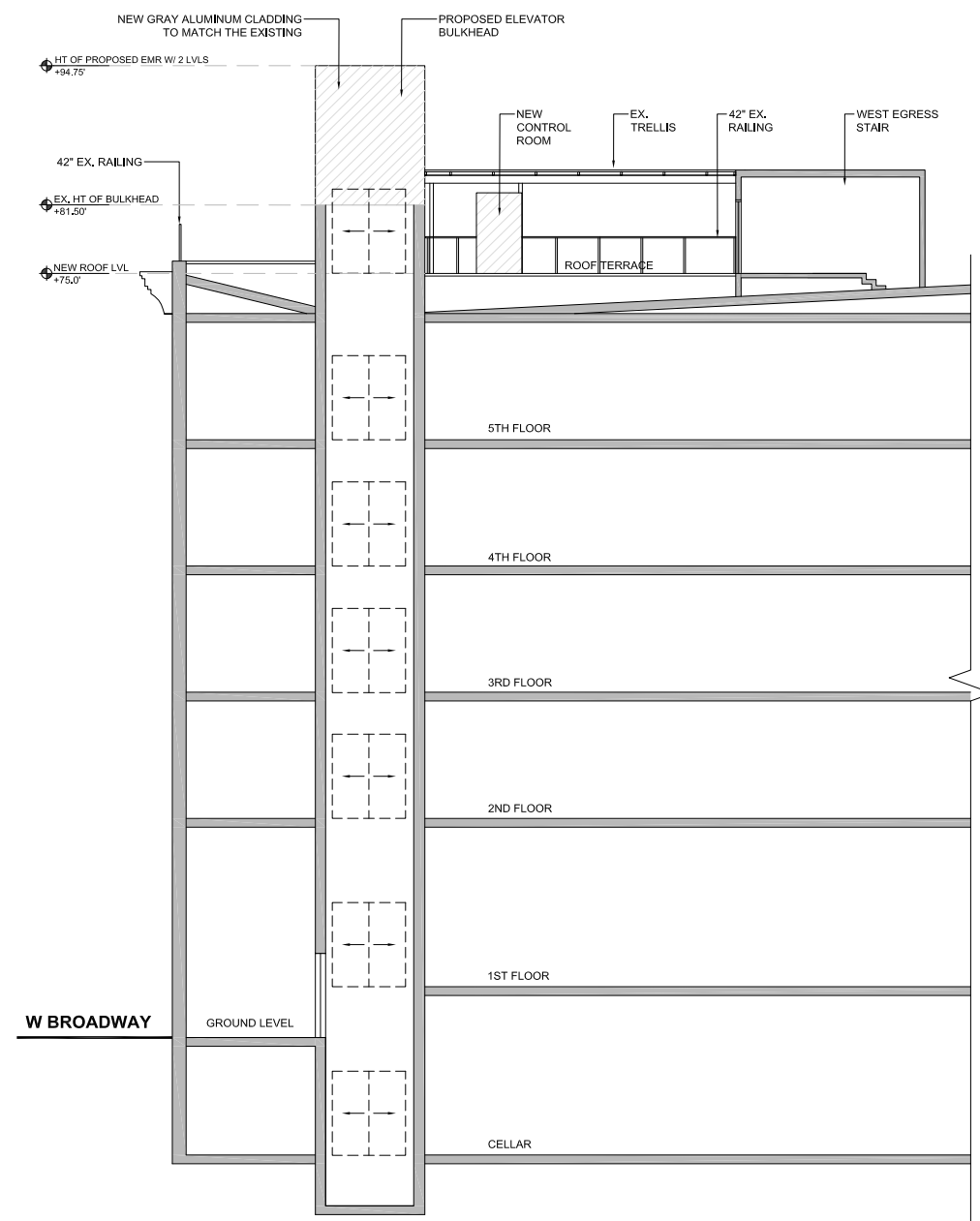
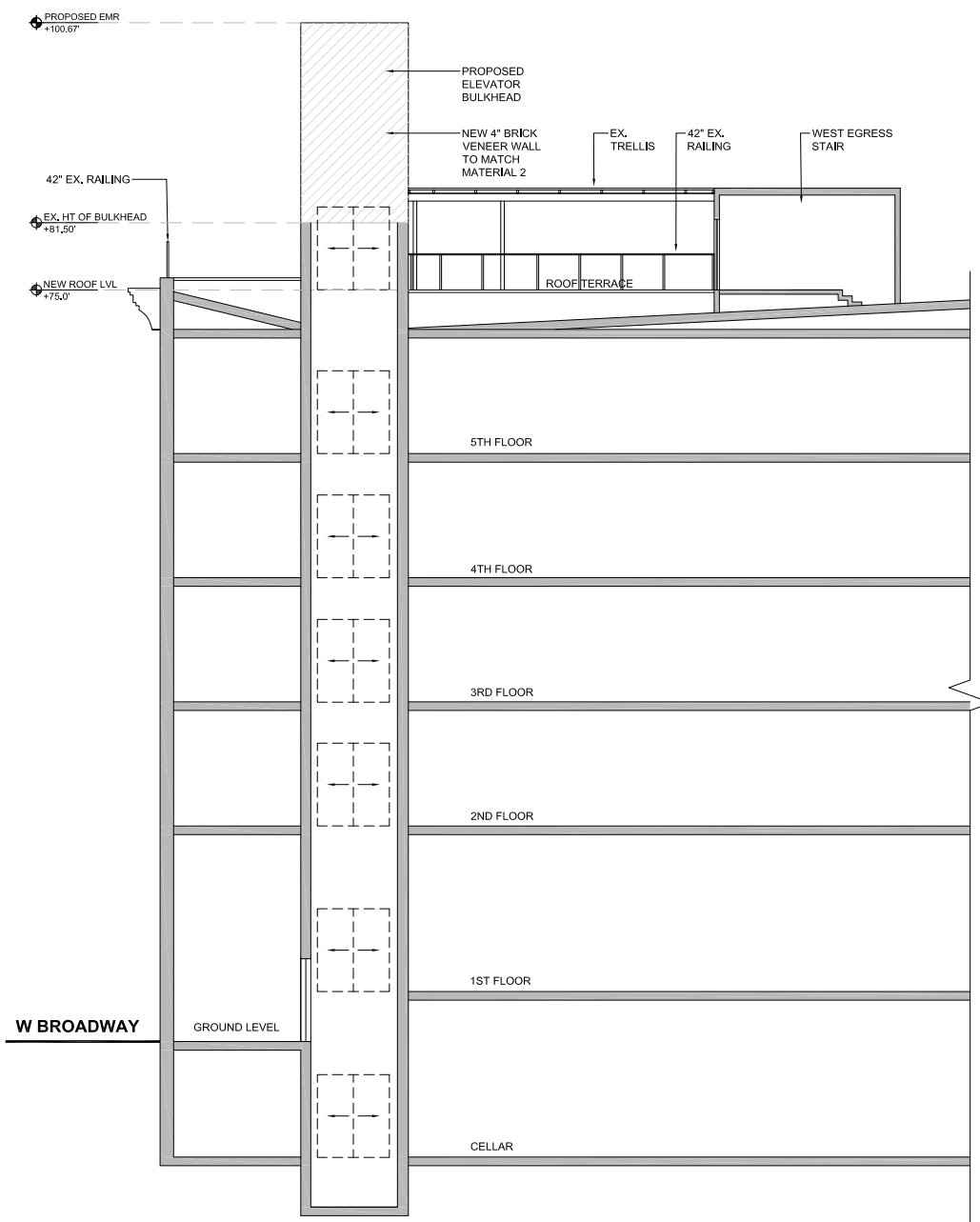
3 PARTIAL SECTION - NEW PROPOSAL WORK  
SCALE: 1/8" = 1'-0"



# BUILDING SECTIONS- 2 LEVELS

375 W BROADWAY, NEW YORK, NY  
JANUARY, 22, 2024  
UPDATED ON APRIL 11, 2024  
PROJECT NUMBER: 23-146

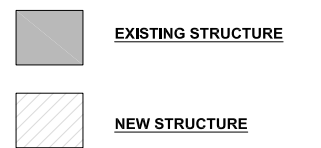
**SRAA+E**  
Architecture & Engineering, P.C.



1 PARTIAL SECTION - PREVIOUSLY PROPOSED WORK  
SCALE: 1/8" = 1'-0"

2 PARTIAL SECTION - NEW PROPOSAL WORK  
SCALE: 1/8" = 1'-0"

3 PARTIAL SECTION - NEW PROPOSAL ALTERNATIVE WORK  
SCALE: 1/8" = 1'-0"

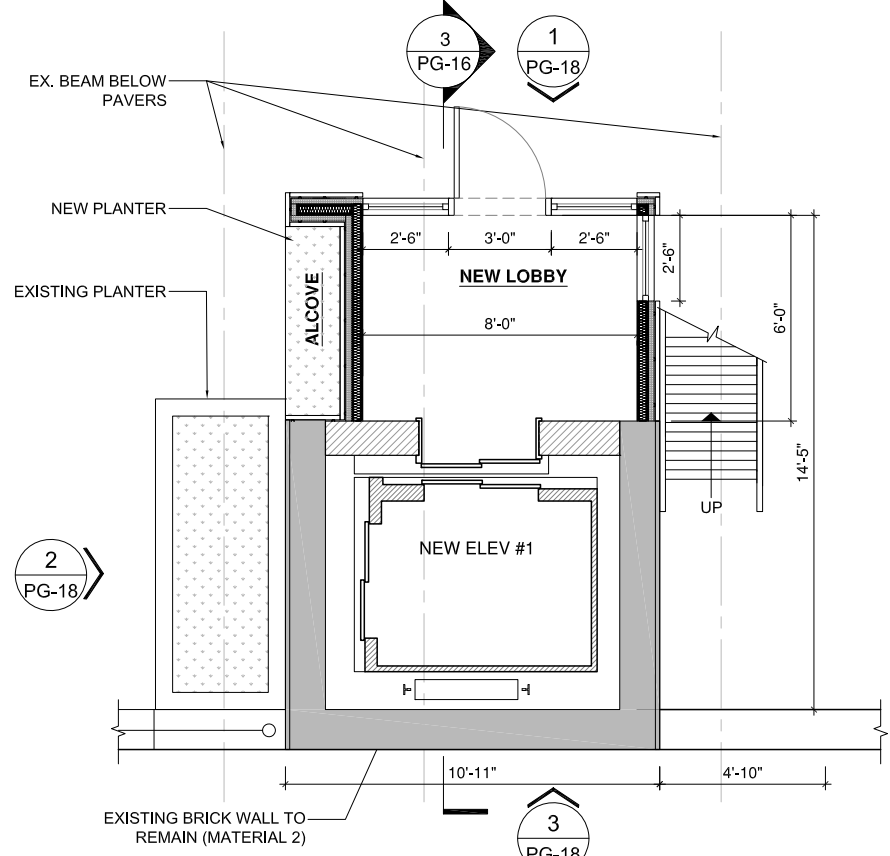


# BUILDING SECTIONS

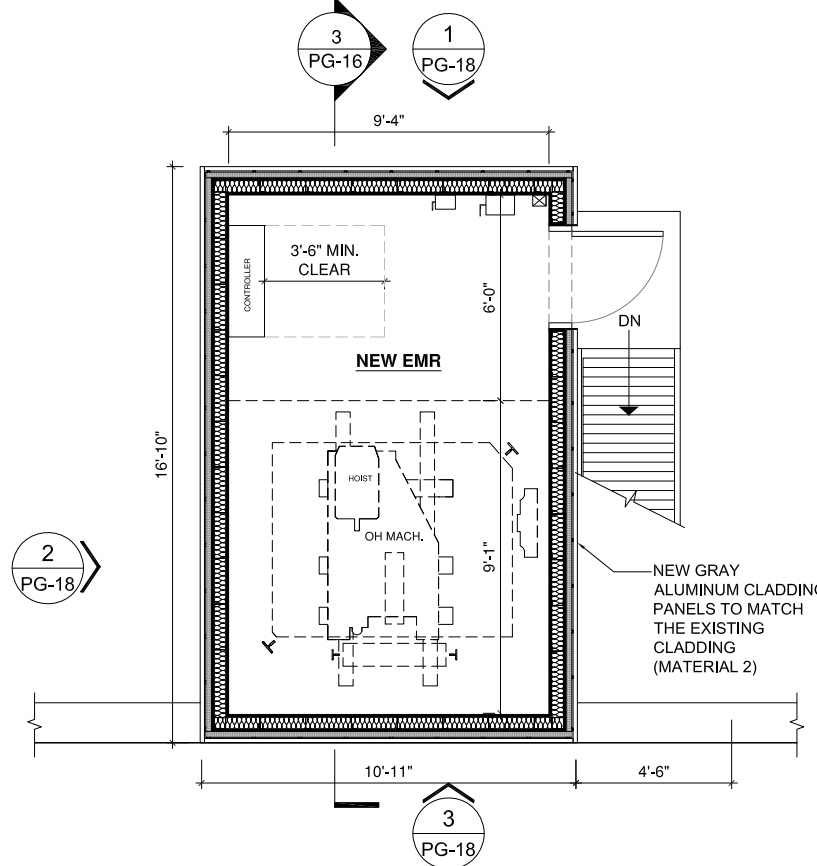
375 W BROADWAY, NEW YORK, NY  
JANUARY, 22, 2024  
UPDATED ON APRIL 11, 2024  
PROJECT NUMBER: 23-146

**SRAA+E**  
Architecture & Engineering, P.C.

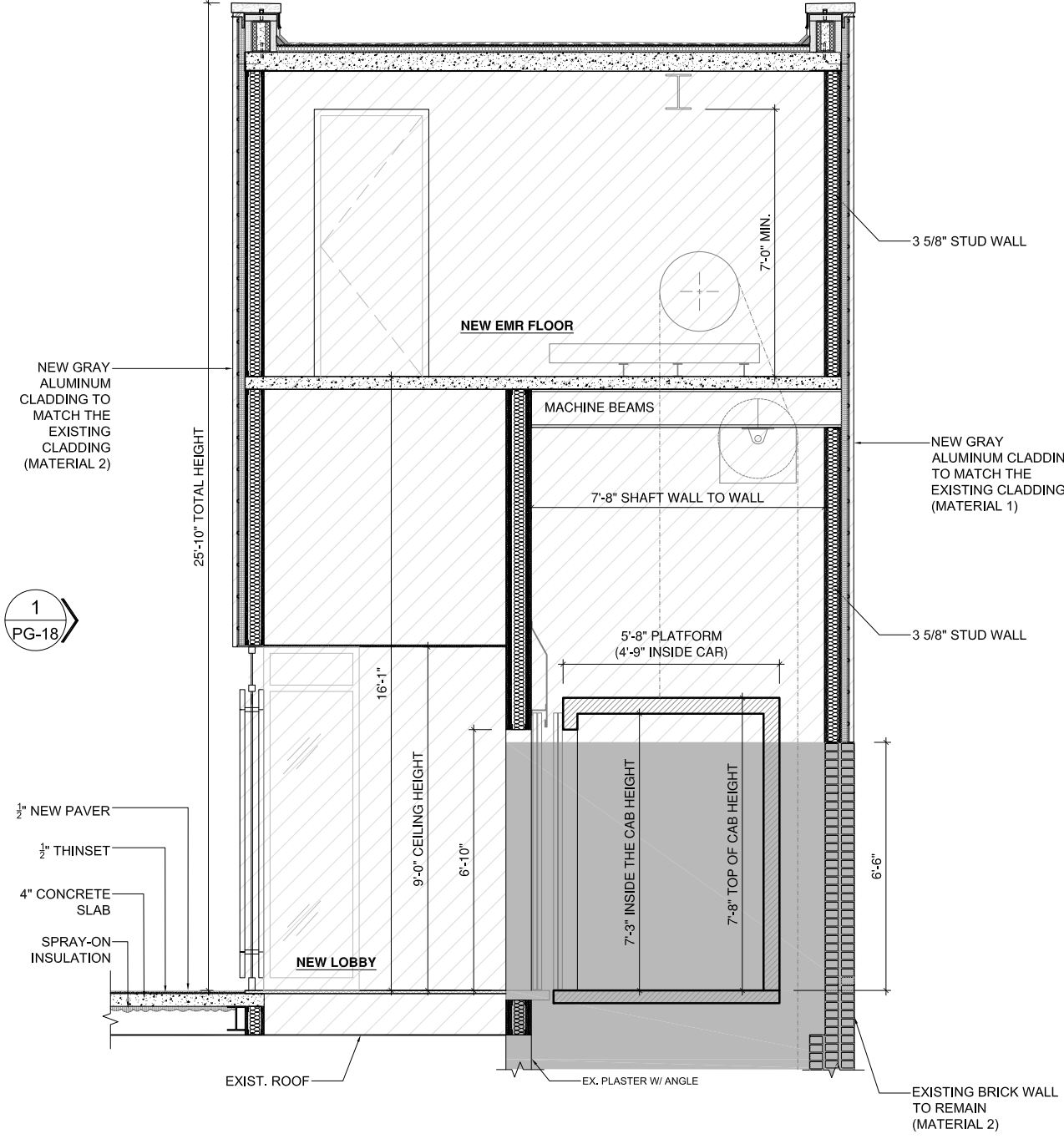




1 ROOF DECK CONSTRUCTION PLAN  
SCALE: 3/8" = 1'-0"



2 ROOF BULKHEAD CONSTRUCTION PLAN  
SCALE: 3/8" = 1'-0"



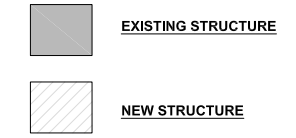
3 PASSENGER ELEVATOR BULKHEAD EXTENSION- SECTION  
SCALE: 1/2" = 1'-0"



MATERIAL 1:  
GRAY ALUMINUM CLADDING PANELS TO MATCH EXISTING



MATERIAL 2:  
EXISTING BRICK WALL

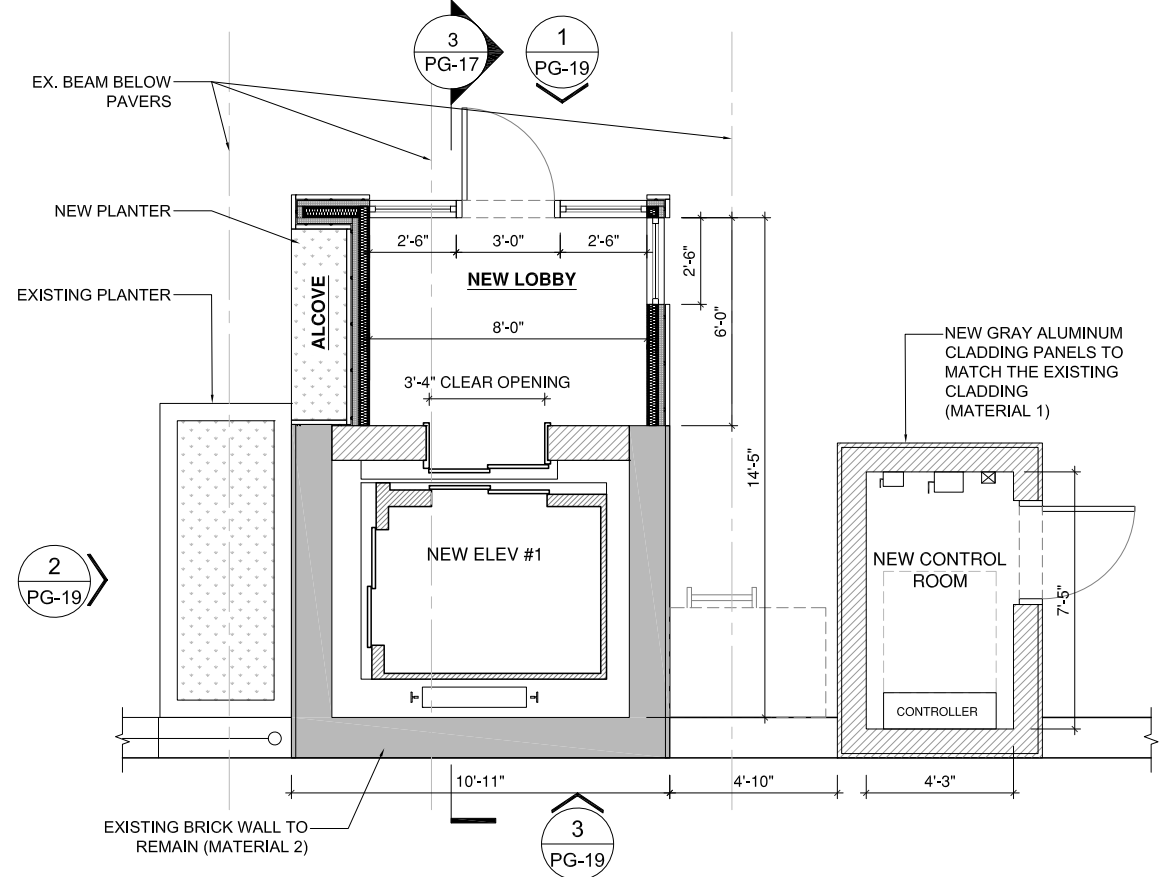


# PASSENGER ELEVATOR BULKHEAD EXTENSION

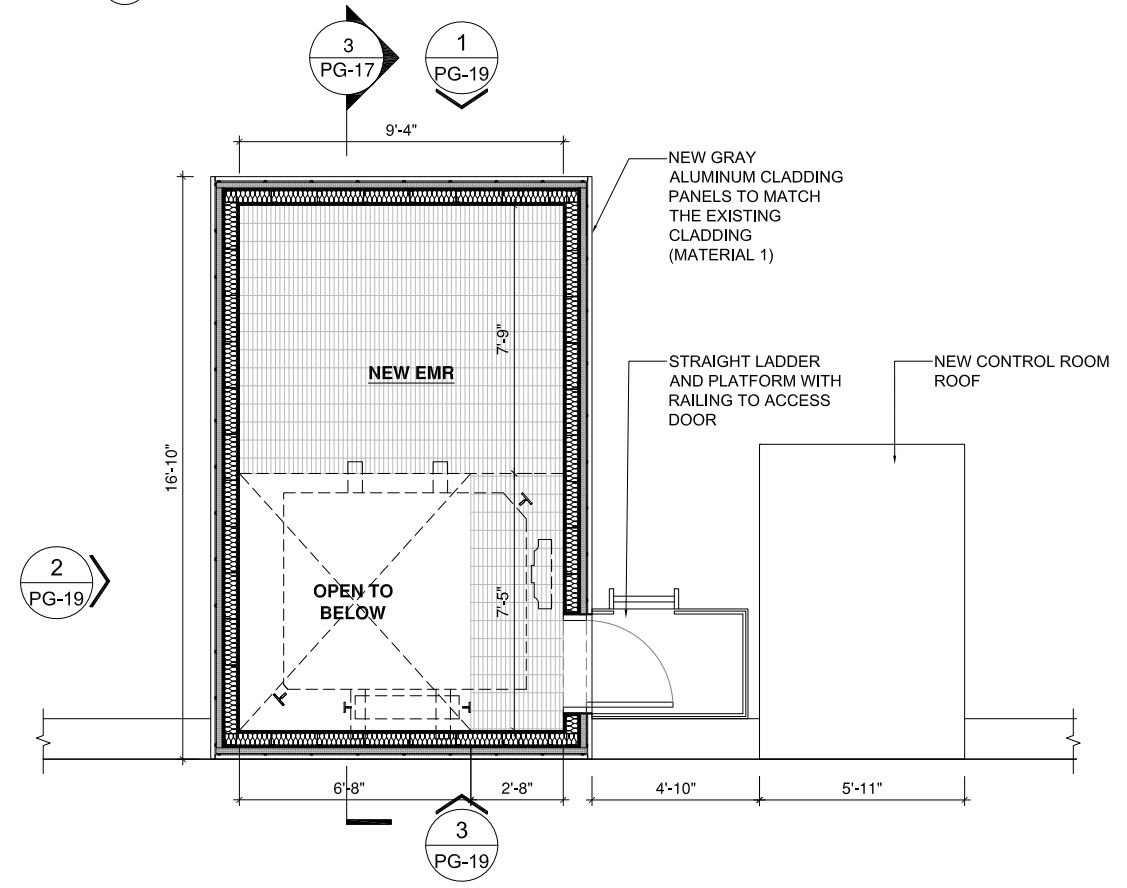
PREVIOUSLY PROPOSED

375 W BROADWAY, NEW YORK, NY  
JANUARY, 22, 2024  
UPDATED ON APRIL 11, 2024  
PROJECT NUMBER: 23-146

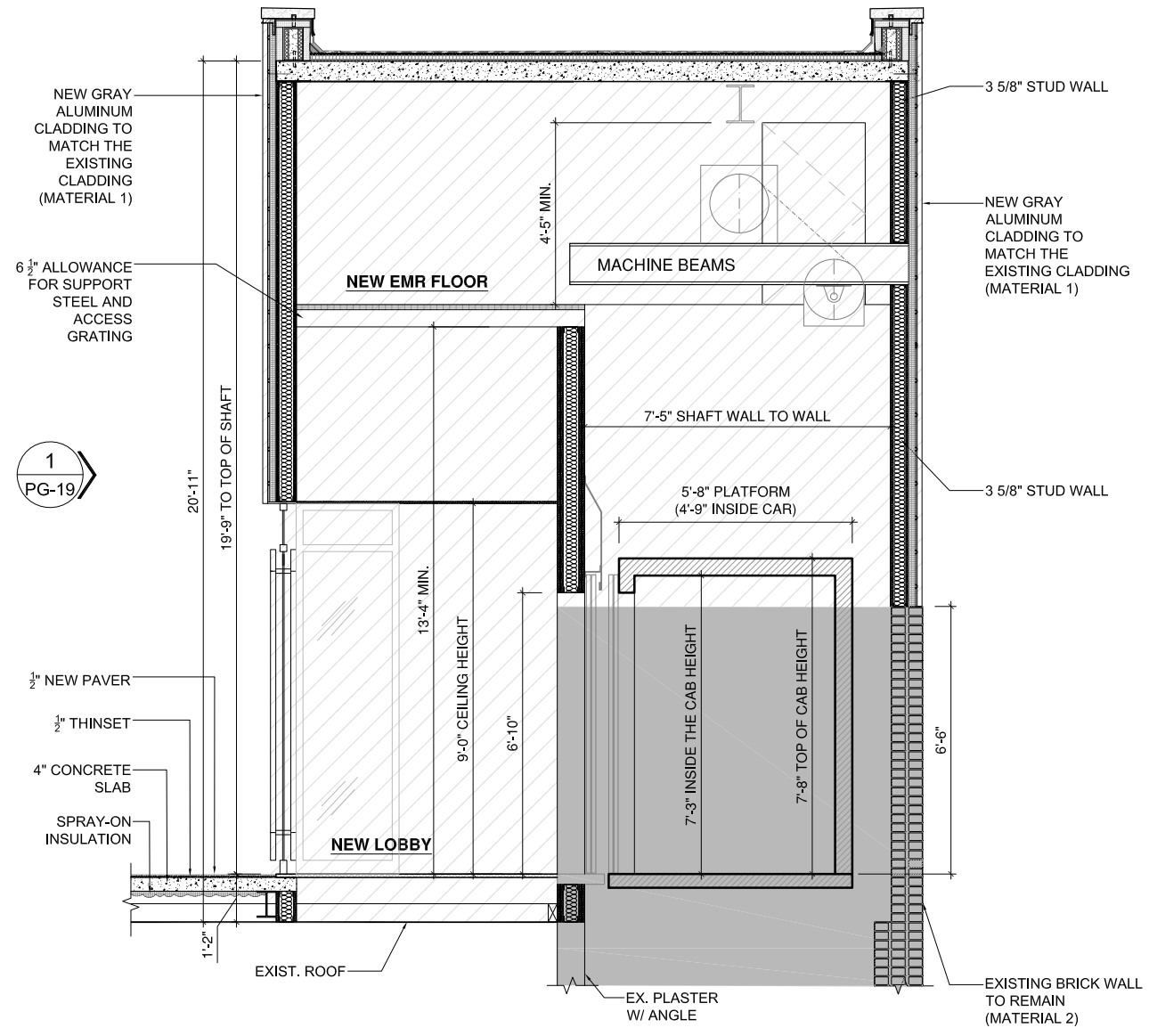
**SRAA+E**  
Architecture & Engineering, P.C.



1 ROOF DECK CONSTRUCTION PLAN  
SCALE: 3/8" = 1'-0"



2 ROOF BULKHEAD CONSTRUCTION PLAN  
SCALE: 3/8" = 1'-0"



3 PASSENGER ELEVATOR BULKHEAD EXTENSION- SECTION  
SCALE: 1/2" = 1'-0"

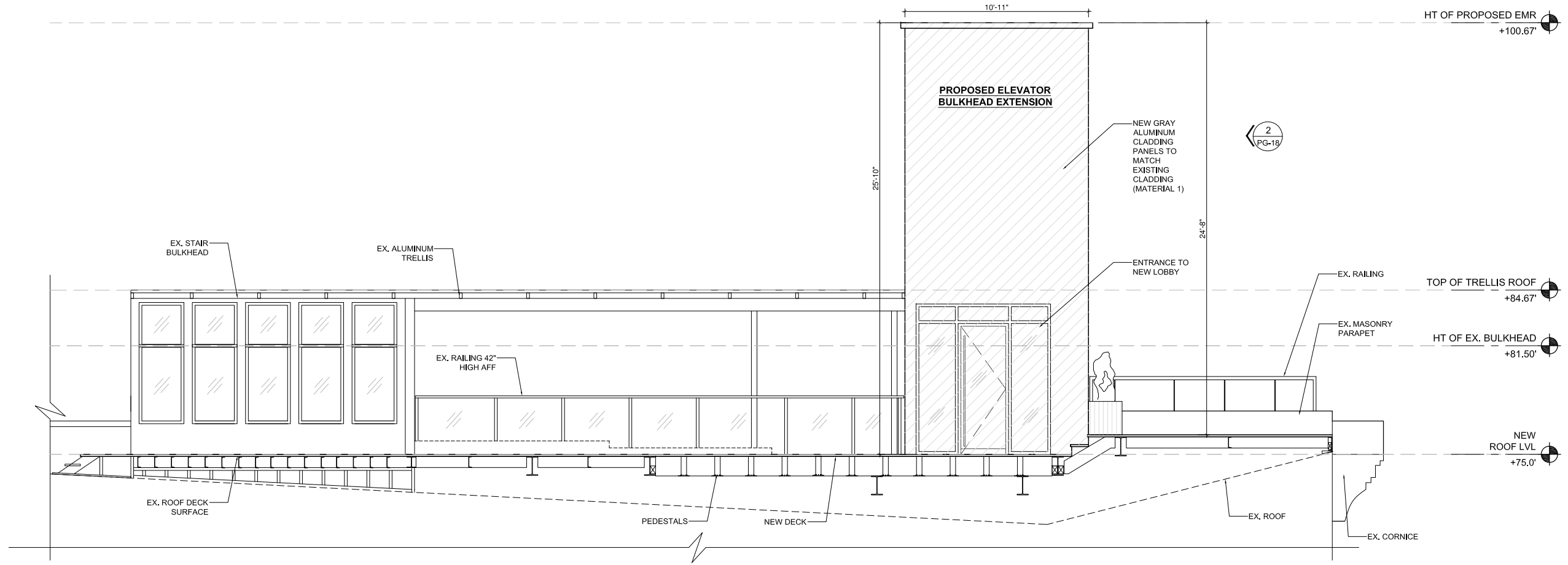
EXISTING STRUCTURE  
NEW STRUCTURE

# PASSENGER ELEVATOR BULKHEAD EXTENSION

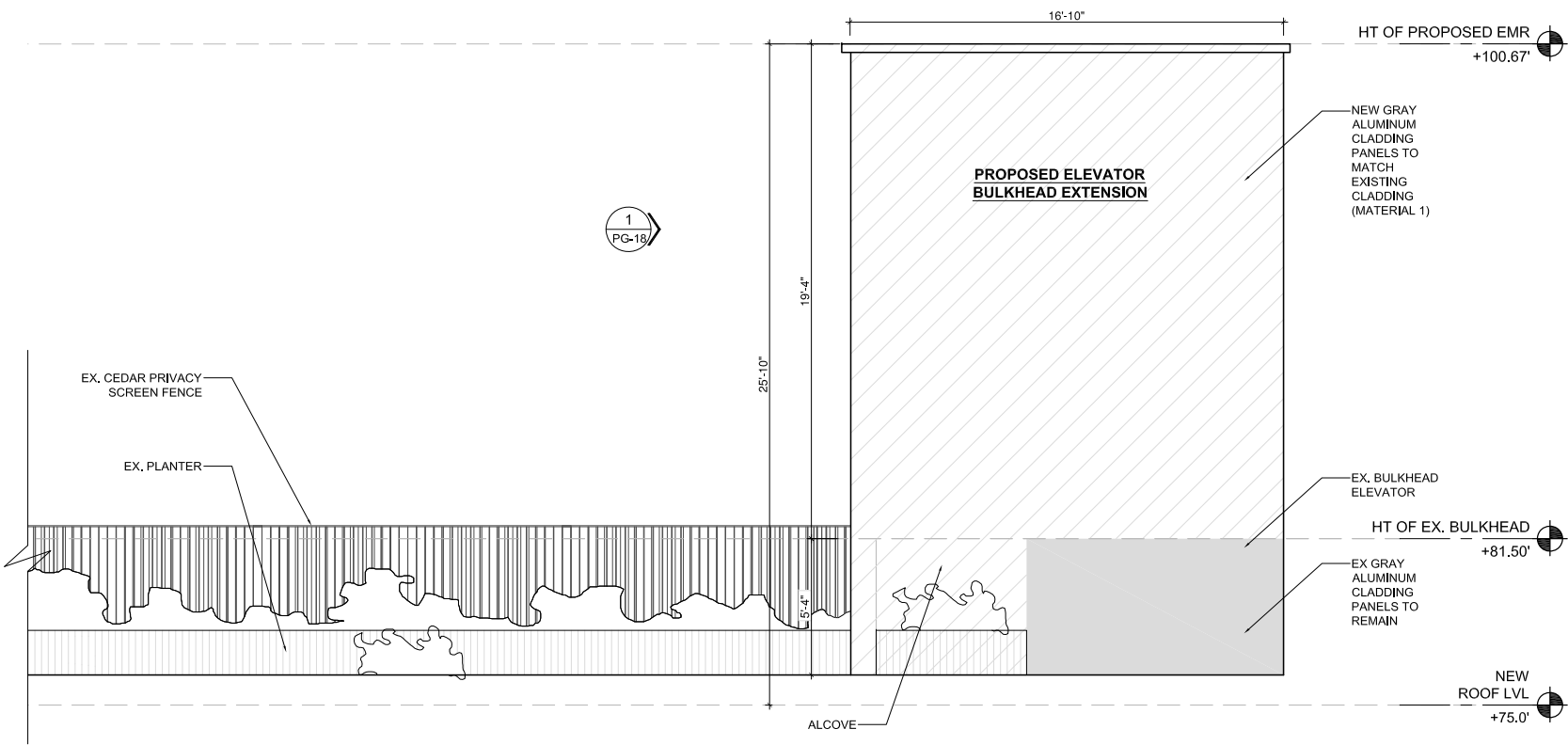
## NEW PROPOSAL

375 W BROADWAY, NEW YORK, NY  
JANUARY, 22, 2024  
UPDATED ON APRIL 11, 2024  
PROJECT NUMBER: 23-146

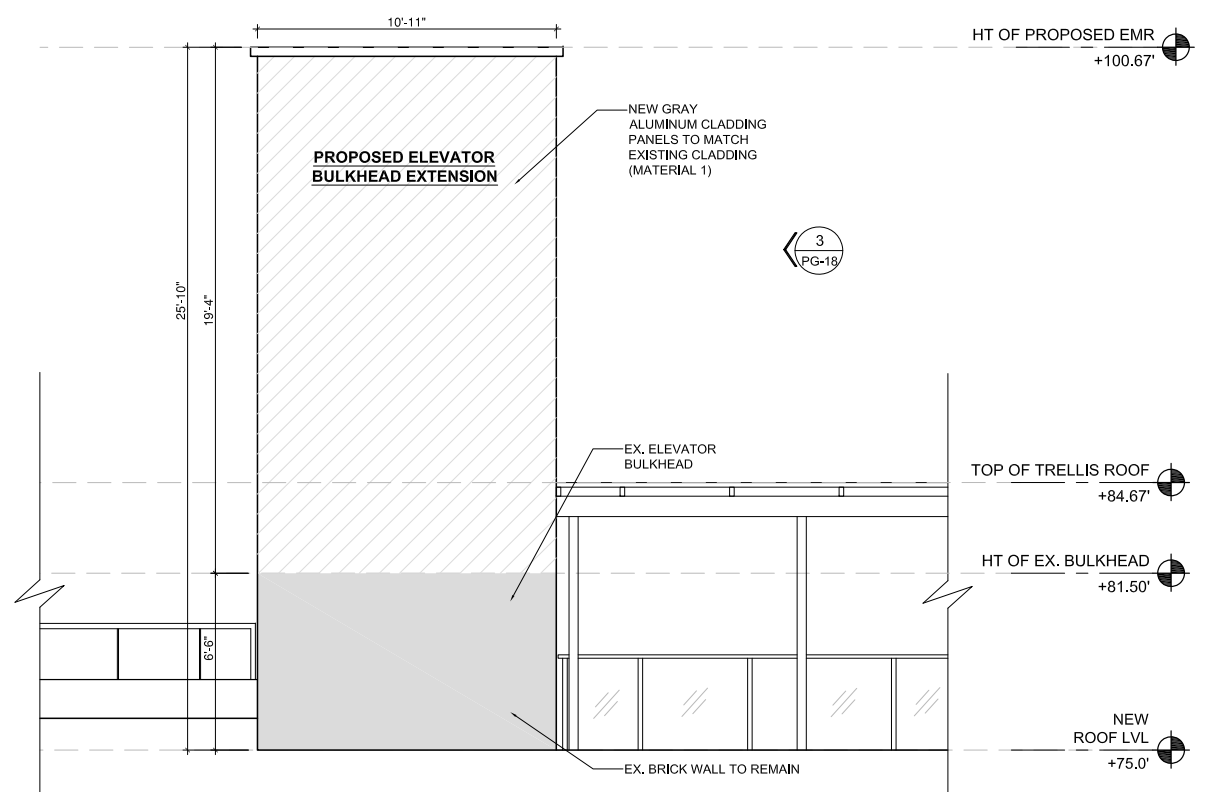
**SRAA+E**  
Architecture & Engineering, P.C.



**1 PASSENGER ELEVATOR BULKHEAD EXTENSION - NORTH ELEVATION**  
SCALE: 3/8" = 1'-0"



**2 PASSENGER ELEVATOR BULKHEAD EXTENSION - WEST ELEVATION**  
SCALE: 3/8" = 1'-0"



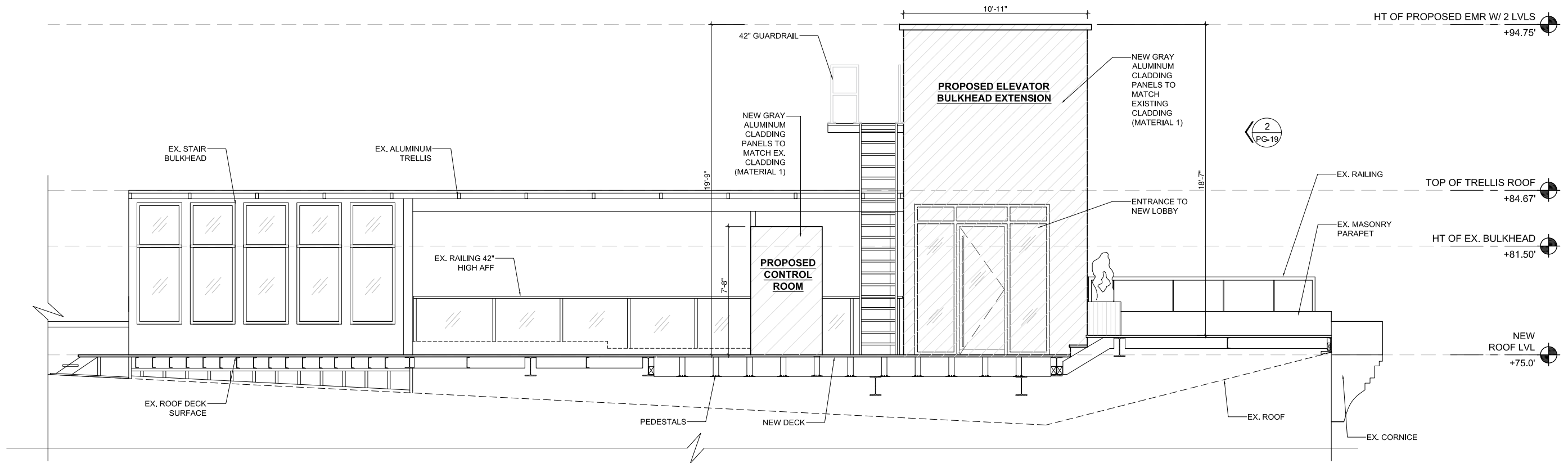
**3 PASSENGER ELEVATOR BULKHEAD EXTENSION - SOUTH ELEVATION**  
SCALE: 3/8" = 1'-0"

# PASSENGER ELEVATOR BULKHEAD EXTENSION

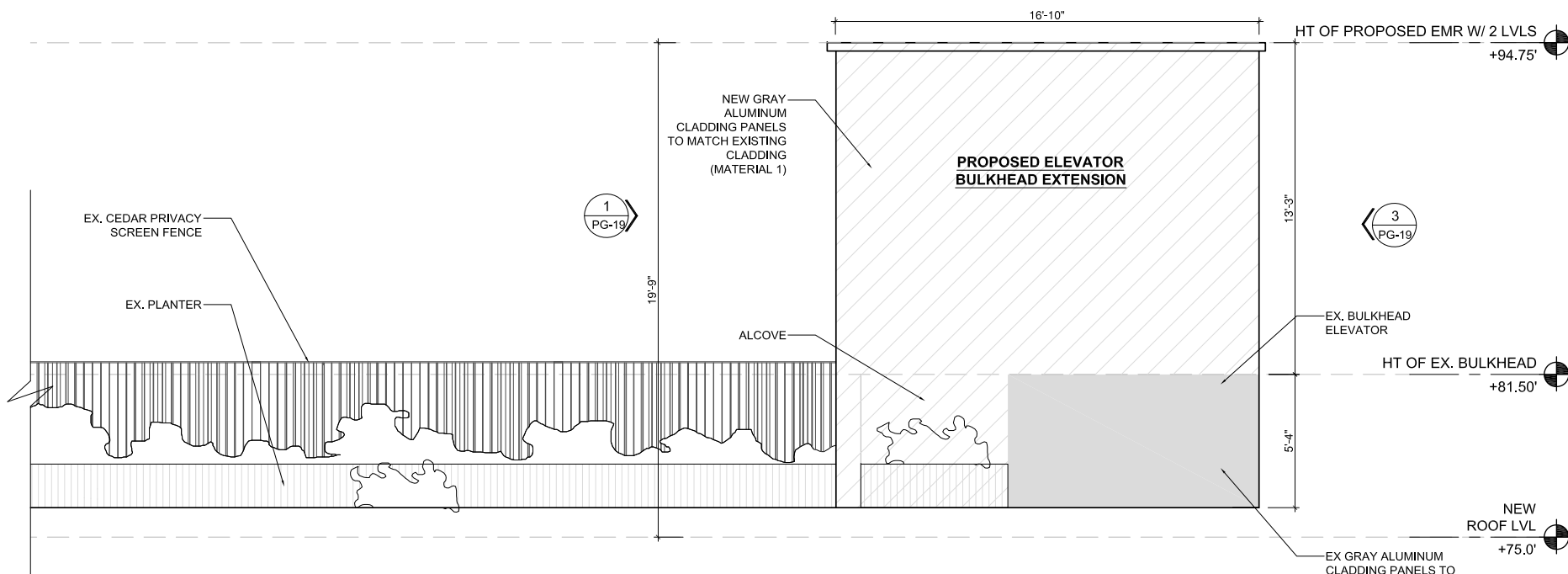
## PREVIOUSLY PROPOSED

375 W BROADWAY, NEW YORK, NY  
JANUARY, 22, 2024  
UPDATED ON APRIL 11, 2024  
PROJECT NUMBER: 23-146

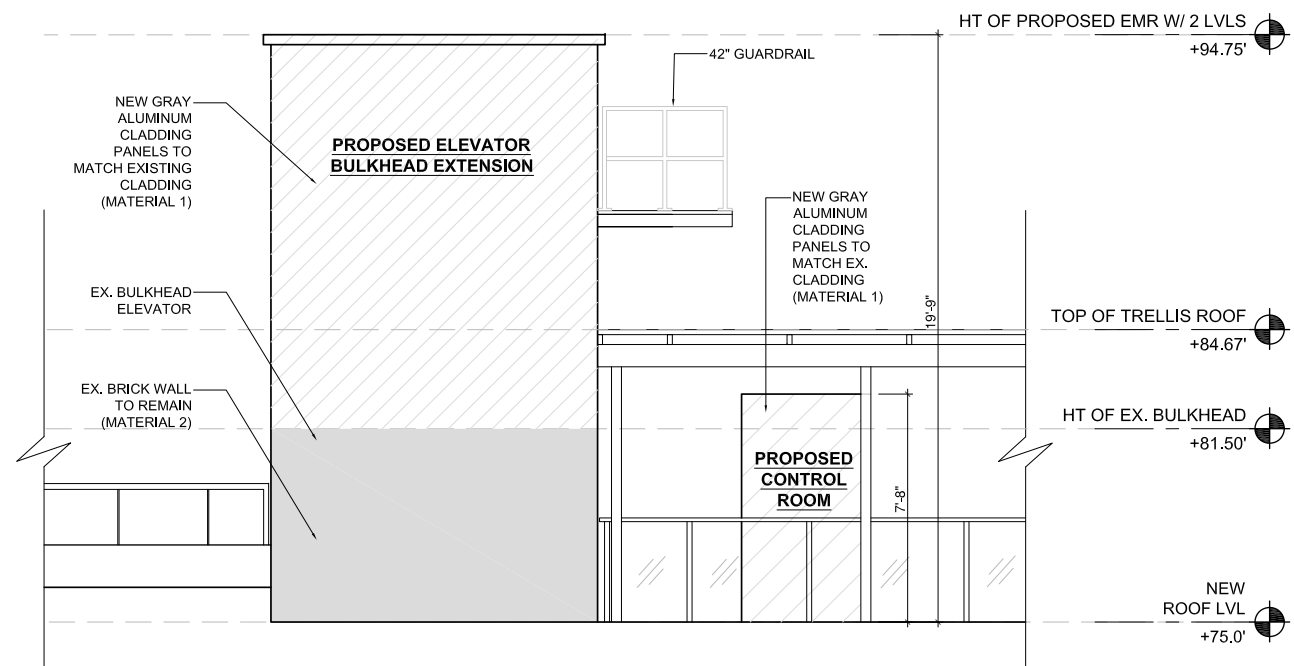
**SRAA+E**  
Architecture & Engineering, P.C.



**1 PASSENGER ELEVATOR BULKHEAD EXTENSION - NORTH ELEVATION**  
SCALE: 3/8" = 1'-0"



**2 PASSENGER ELEVATOR BULKHEAD EXTENSION - WEST ELEVATION**  
SCALE: 3/8" = 1'-0"



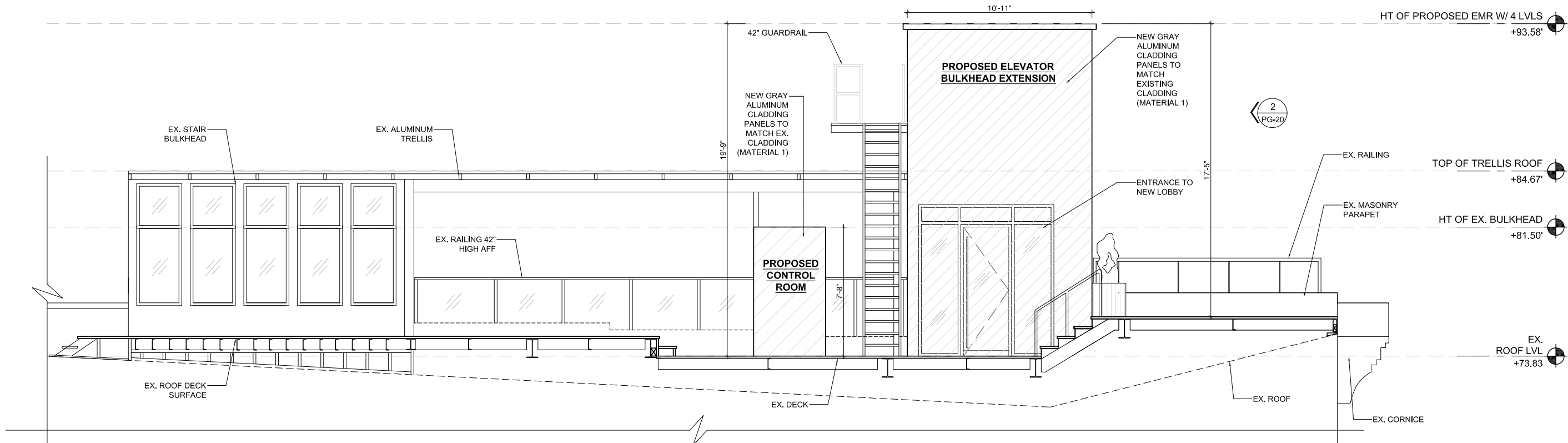
**3 PASSENGER ELEVATOR BULKHEAD EXTENSION - SOUTH ELEVATION**  
SCALE: 3/8" = 1'-0"

# PASSENGER ELEVATOR BULKHEAD EXTENSION

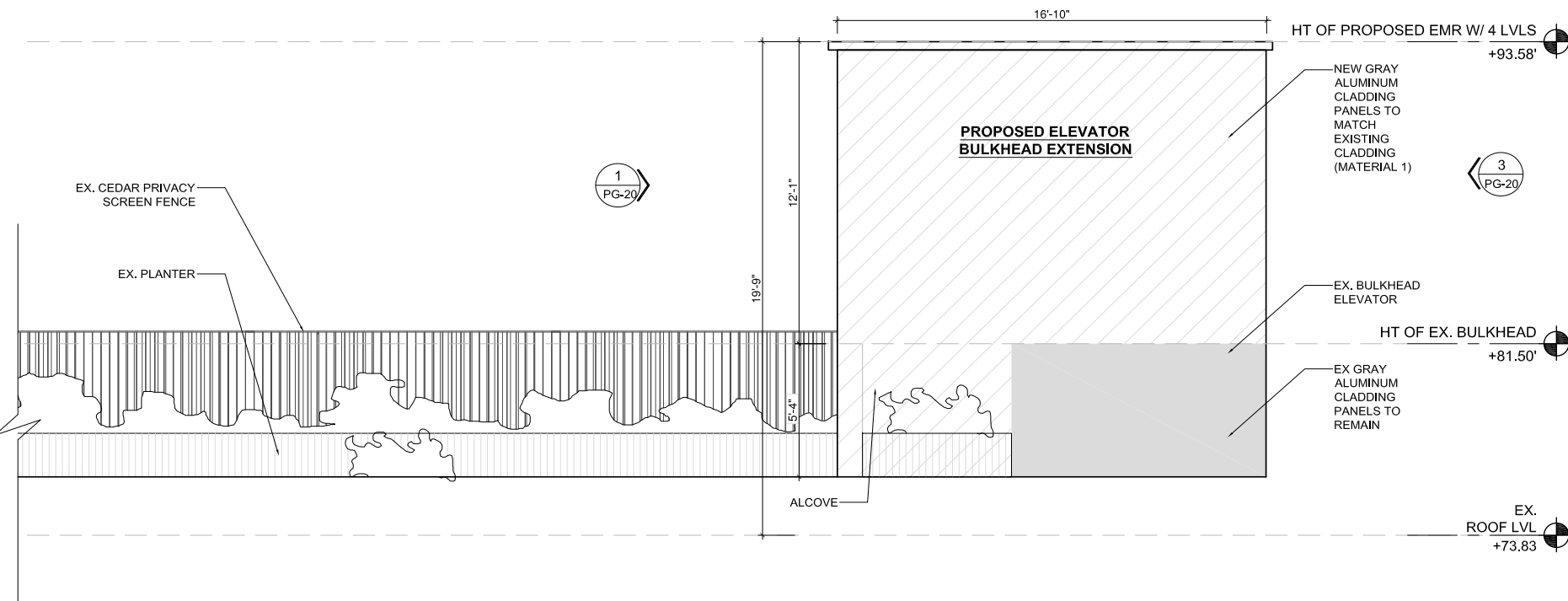
## NEW PROPOSAL

375 W BROADWAY, NEW YORK, NY  
JANUARY, 22, 2024  
UPDATED ON APRIL 11, 2024  
PROJECT NUMBER: 23-146

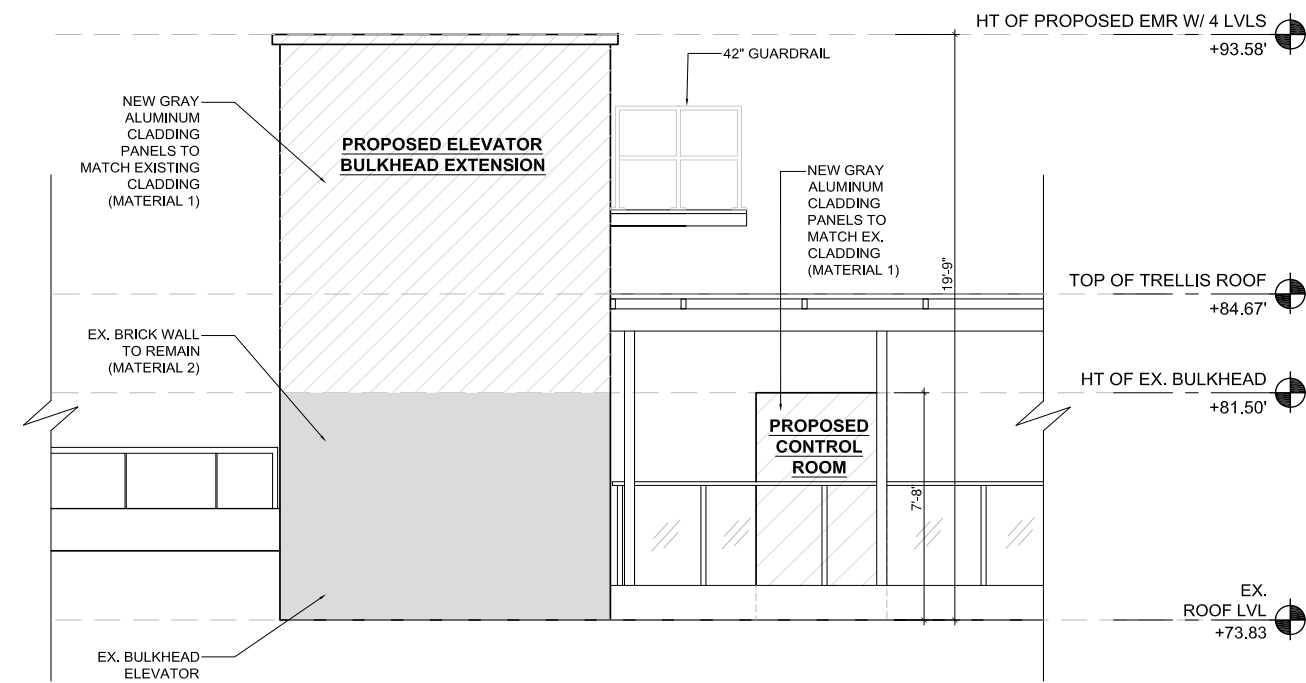
**SRAA+E**  
Architecture & Engineering, P.C.



**1** PASSENGER ELEVATOR BULKHEAD EXTENSION - NORTH ELEVATION  
SCALE: 3/8" = 1'-0"



**2** PASSENGER ELEVATOR BULKHEAD EXTENSION - WEST ELEVATION  
SCALE: 3/8" = 1'-0"



**3** PASSENGER ELEVATOR BULKHEAD EXTENSION - SOUTH ELEVATION  
SCALE: 3/8" = 1'-0"

# PASSENGER ELEVATOR BULKHEAD EXTENSION

## NEW PROPOSAL ALTERNATIVE

375 W BROADWAY, NEW YORK, NY  
JANUARY, 22, 2024  
UPDATED ON APRIL 11, 2024  
PROJECT NUMBER: 23-146

**SRAA+E**  
Architecture & Engineering, P.C.

The current proposal is:

**Preservation Department – Item 3, LPC-24-06747**

**375 West Broadway – SoHo-Cast Iron Historic District**  
**Borough of Manhattan**

**Note: this is a Public Meeting item. No public testimony will be received today as the hearing on this item is closed**

# APPENDIX

**EXISTING**

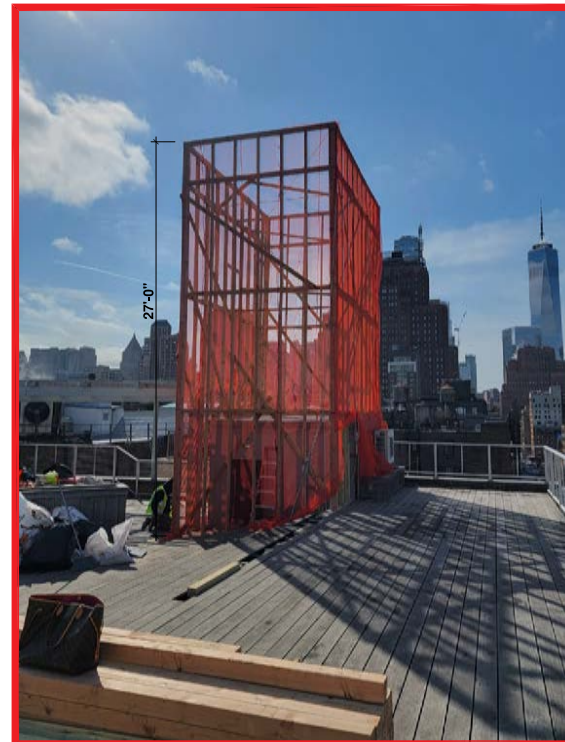
**PREVIOUSLY PROPOSED**

**NEW PROPOSAL**

**VIEW #7**



7 VIEW OF PASSENGER ELEVATOR FROM WEST SIDE



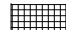

7' VIEW OF PASSENGER ELEVATOR FROM WEST SIDE



7' VIEW OF PASSENGER ELEVATOR FROM WEST SIDE

**ENLARGED VIEW #7**

**LEGEND:**

-  2 LEVELS
-  4 LEVELS



EXISTING

PREVIOUSLY PROPOSED

NEW PROPOSAL

VIEW #8



8 VIEW FROM BROOME STREET



8\* VIEW FROM BROOME STREET



8\* VIEW FROM BROOME STREET

ENLARGED VIEW #8


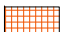


8\* ENLARGED VIEW FROM BROOME STREET



8\* ENLARGED VIEW FROM BROOME STREET

**LEGEND:**

-  2 LEVELS
-  4 LEVELS

EXISTING

PREVIOUSLY PROPOSED

NEW PROPOSAL

VIEW #9



9 VIEW FROM WATTS STREET



9° VIEW FROM WATTS STREET



9° VIEW FROM WATTS STREET

ENLARGED VIEW #9





9° ENLARGED VIEW FROM WATTS STREET



9° ENLARGED VIEW FROM WATTS STREET

**LEGEND:**

-  2 LEVELS
-  4 LEVELS

EXISTING

PREVIOUSLY PROPOSED

NEW PROPOSAL

VIEW #10



10 VIEW FROM WATTS STREET



10 VIEW FROM WATTS STREET



10 VIEW FROM WATTS STREET

ENLARGED VIEW #10




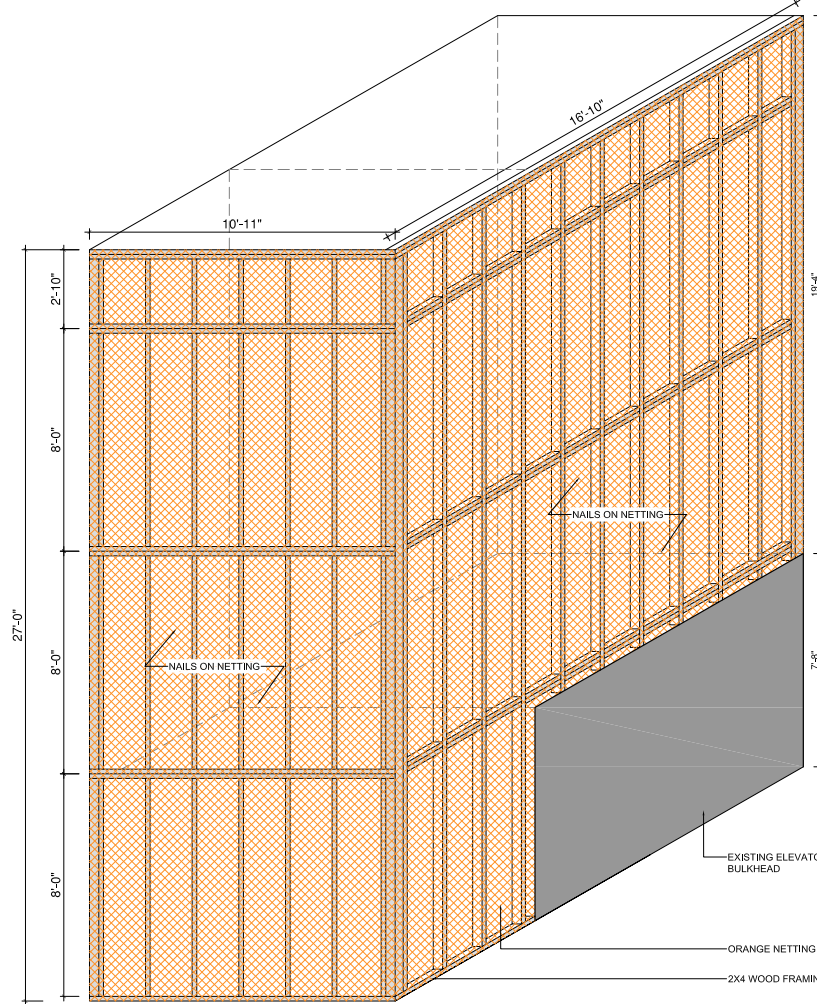
10 ENLARGED VIEW FROM WATTS STREET



10 ENLARGED VIEW FROM WATTS STREET

LEGEND:

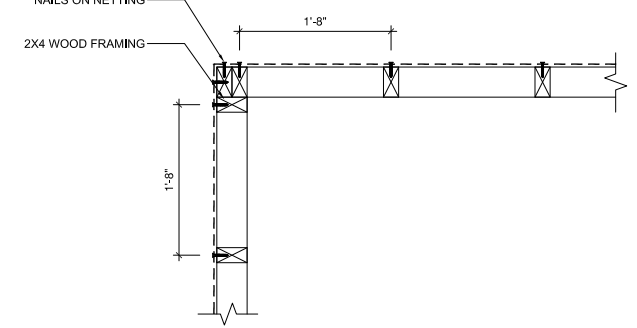
-  2 LEVELS
-  4 LEVELS



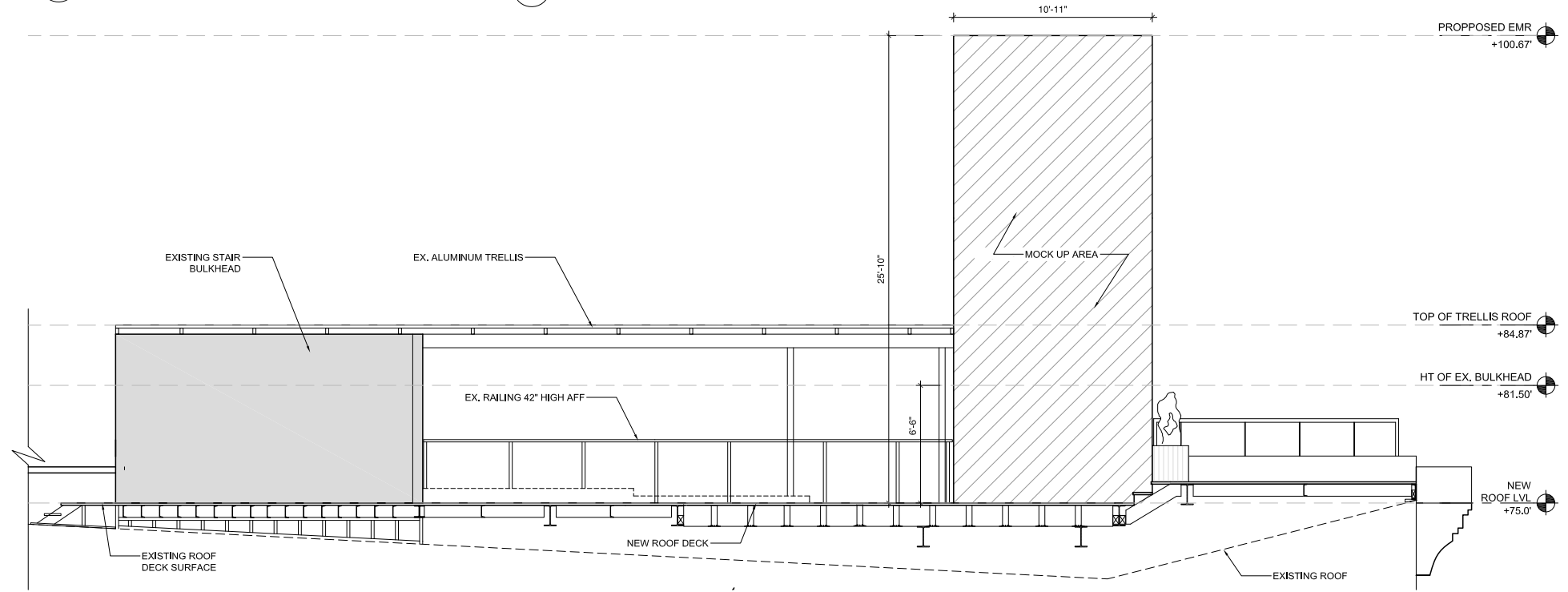
1 MOCK UP OF PASSENGER ELEVATOR BULKHEAD EXTENSION- ISOMETRIC VIEW  
SCALE: 1/4" = 1'-0"



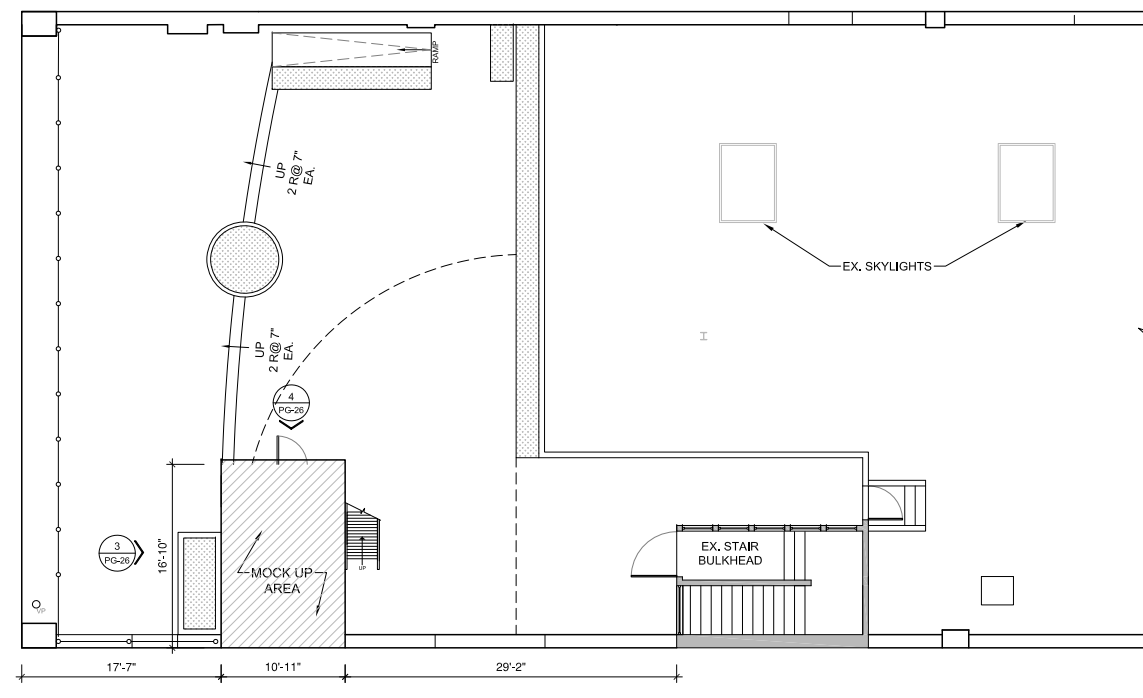
5 ORANGE NETTING  
NTS



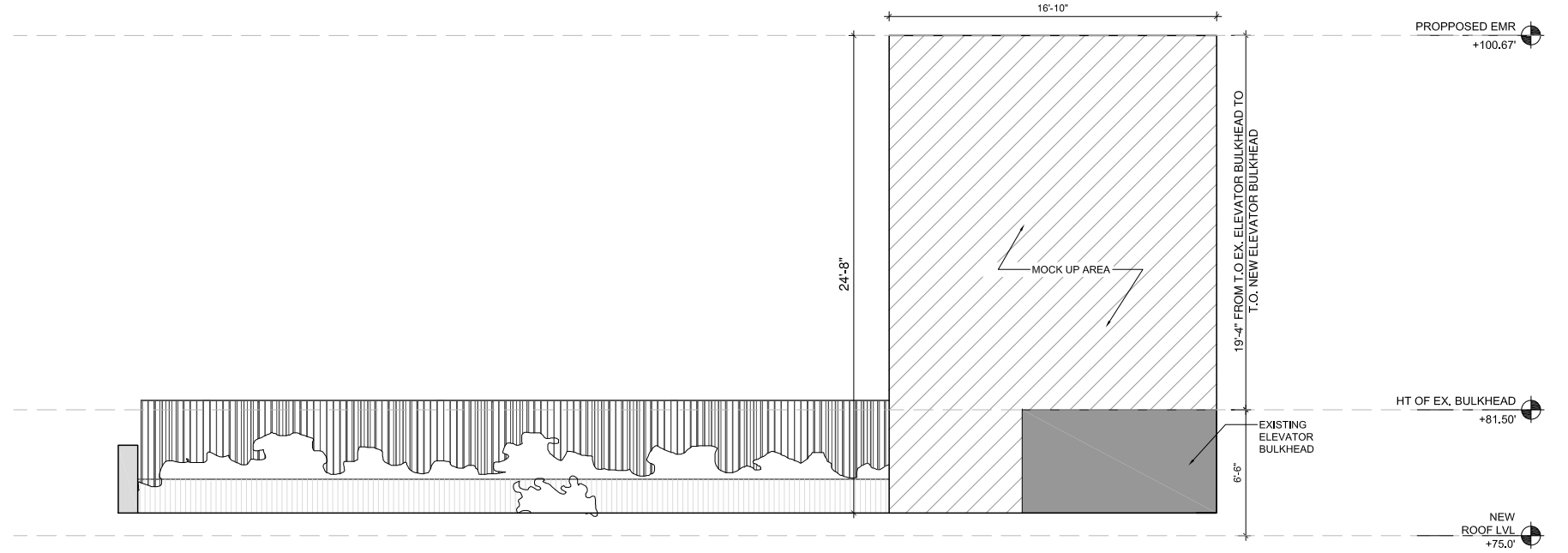
6 MOCK UP- CORNER DETAILS  
SCALE: 1" = 1'-0"



4 MOCK UP OF PASSENGER ELEVATOR BULKHEAD EXTENSION- SECTION  
SCALE: 1/4" = 1'-0"



2 MOCK UP- ROOF DECK PLAN LPC  
SCALE: 1/8" = 1'-0"



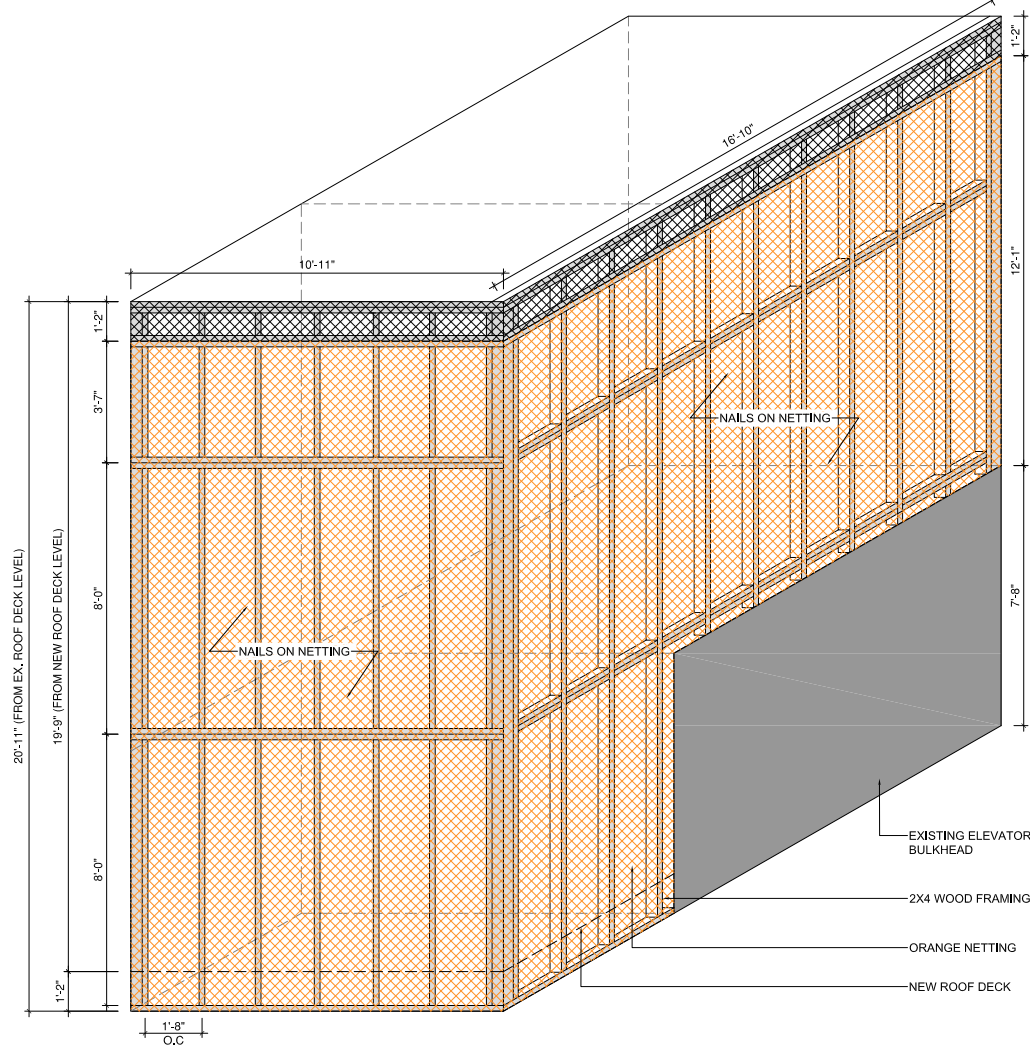
3 MOCK UP- PASSENGER ELEVATOR BULKHEAD EXTENSION- SECTION  
SCALE: 1/8" = 1'-0"

# PASSENGER ELEVATOR BULKHEAD EXTENSION

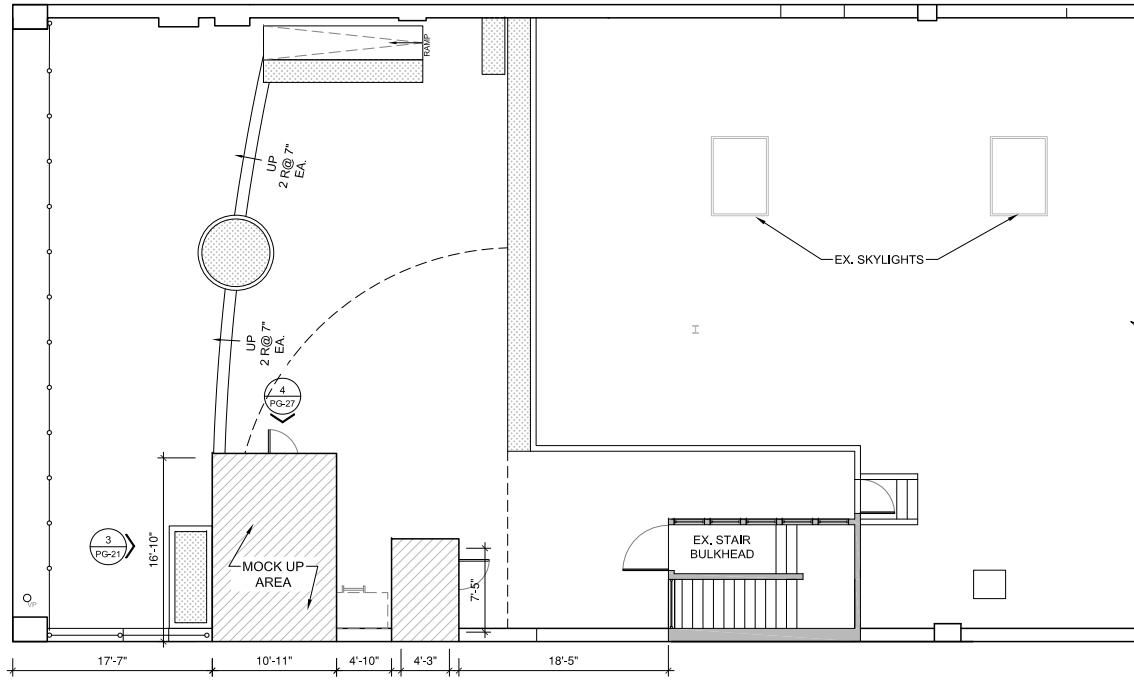
PREVIOUSLY PROPOSED

375 W BROADWAY, NEW YORK, NY  
JANUARY, 22, 2024  
UPDATED ON APRIL 11, 2024  
PROJECT NUMBER: 23-146

**SRAA+E**  
Architecture & Engineering, P.C.



1 MOCK UP OF PASSENGER ELEVATOR BULKHEAD EXTENSION- ISOMETRIC VIEW  
SCALE: 3/8" = 1'-0"



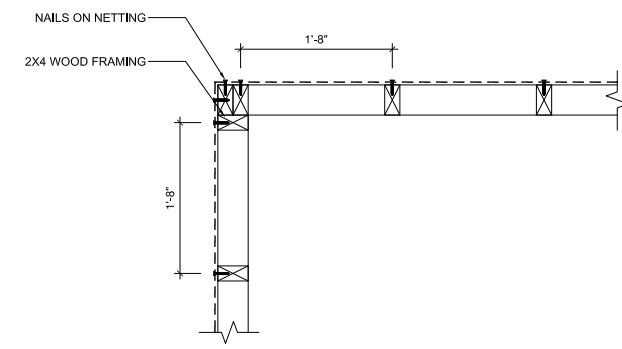
2 MOCK UP- ROOF DECK PLAN LPC  
SCALE: 1/8" = 1'-0"



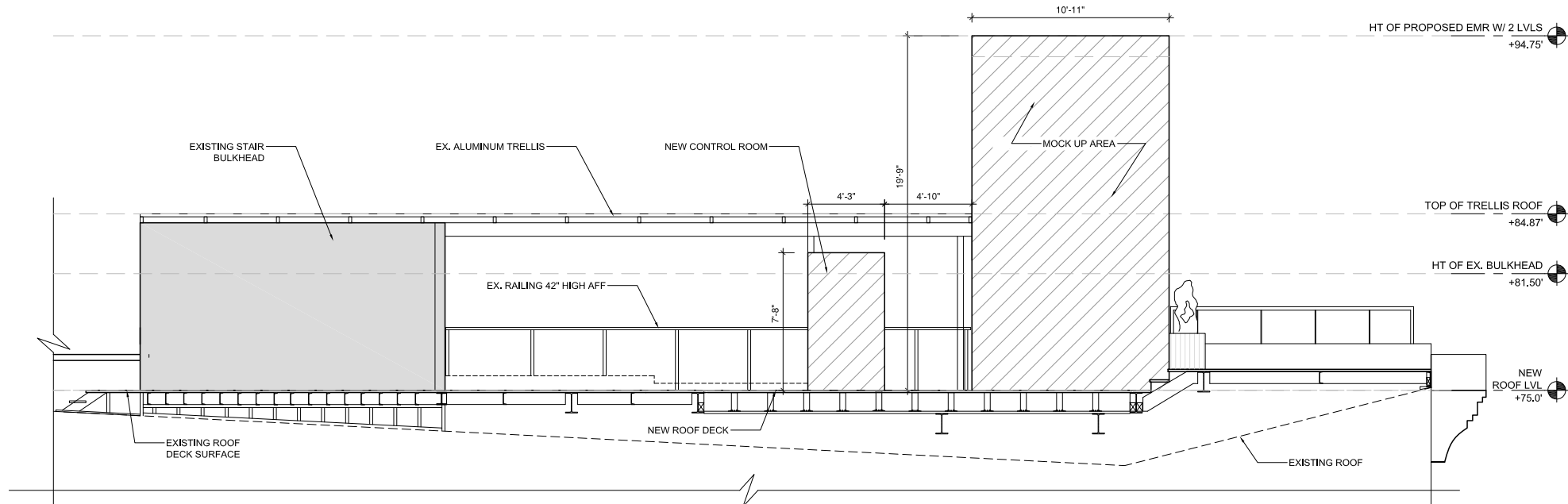
5 ORANGE NETTING  
NTS



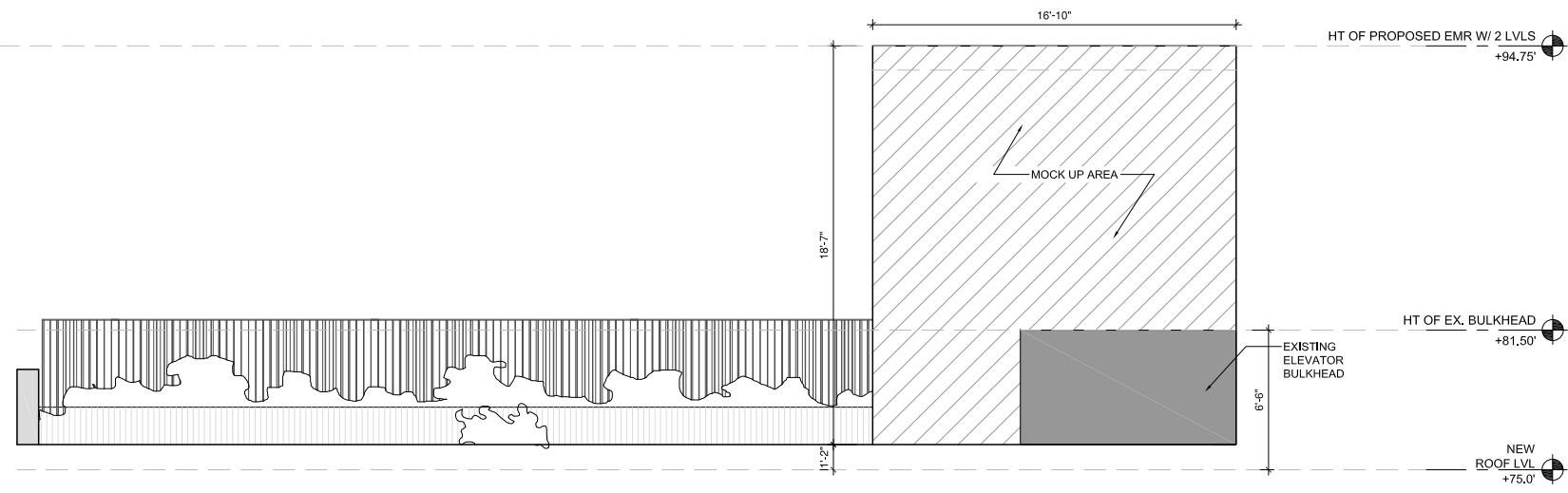
6 BLACK NETTING  
NTS



7 MOCK UP- CORNER DETAILS  
SCALE: 1" = 1'-0"



4 MOCK UP OF PASSENGER ELEVATOR BULKHEAD EXTENSION- SECTION  
SCALE: 1/4" = 1'-0"



3 MOCK UP- PASSENGER ELEVATOR BULKHEAD EXTENSION- SECTION  
SCALE: 1/8" = 1'-0"

# PASSENGER ELEVATOR BULKHEAD EXTENSION

## NEW PROPOSAL

375 W BROADWAY, NEW YORK, NY  
JANUARY, 22, 2024  
UPDATED ON APRIL 11, 2024  
PROJECT NUMBER: 23-146

**SRAA+E**  
Architecture & Engineering, P.C.

The current proposal is:

**Preservation Department – Item 3, LPC-24-06747**

**375 West Broadway – SoHo-Cast Iron Historic District**  
**Borough of Manhattan**

**Note: this is a Public Meeting item. No public testimony will be received today as the hearing on this item is closed**