

Landmarks Preservation Commission Presentation

Empire State Dairy
2840 Atlantic Avenue, Brooklyn

Drawing Index

1	Aerial Context	26	Proposed Strack Storefront Details - Atlantic Ave NE
2	Existing Conditions Photos	27	Proposed Englehardt Storefront Details - Atlantic Ave NW
3	Existing Conditions Photos	28	Proposed Englehardt Storefront Details - Schenck Ave
4	Existing Conditions Photos	29	Proposed Storefront Details - Typical
5	Historic Drawings and Photographs	30	Existing and Proposed Window Elevations - Strack Building
6	Front Facade View with Existing Building	31	Existing and Proposed Window Elevations - Strack & Englehardt Buildings
7	Front Facade View with Prior Design - 04/16/19	32	Existing and Proposed Window Elevations - Englehardt Building
8	Front Facade View with Proposed Design	33	Existing and Proposed Window Elevations - Englehardt Building
9	North Elevation - Atlantic Ave - Existing	34	Existing and Proposed Typical Window Details - Strack Building
10	North Elevation - Atlantic Ave - Presented 04/16/19	35	Existing and Proposed Typical Window Details - Englehardt Building
11	North Elevation - Atlantic Ave - Proposed	36	Exterior Finish Materials
12	Proposed Pediment and Pier	37	Zoning Massing Diagram
13	Pediment Detail and Historic References	38	Zoning Plan and Elevation Diagram
14	West Elevation - Schenck Ave - Existing	39	Aerial View at Corner of Atlantic Ave and Schenck Ave with Prior Design - 4/16/19
15	West Elevation - Schenck Ave - Presented 04/16/19	40	Aerial View at Corner of Atlantic Ave and Schenck Ave with Proposed Design
16	West Elevation - Schenck Ave - Proposed	41	Street View at Corner of Atlanic Ave and Barbey St with Prior Design - 4/16/19
17	East Elevation - Barbey St - Existing	42	Street View at Corner of Atlanic Ave and Barbey St with Proposed Design
18	East Elevation - Barbey St - Presented 04/16/19	43	Schenck Ave Street View with Prior Design - 4/16/19
19	East Elevation - Barbey St - Proposed	44	Schenck Ave Street View with Proposed Design
20	Existing South Facade Photos	45	Cantilever Detail
21	South Elevation - Existing		
22	South Elevation - Diagram		
23	South Elevation - Presented 04/16/19		
24	South Elevation - Proposed		
25	Proposed Strack Storefront Details - Barbey St		





A. View from Atlantic Avenue Looking at North Facade



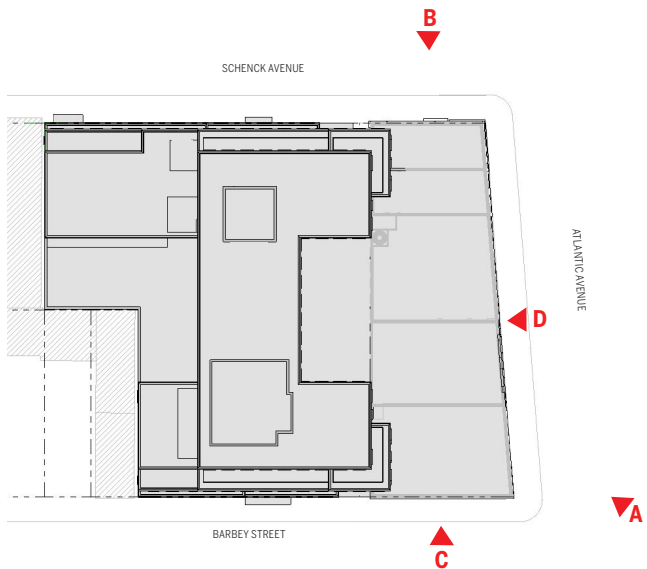
B. West Facade View (Landmarked Portion on the Left)



C. East Facade



D. Monumental Entrance Along Atlantic Ave with Flanking Mosaics



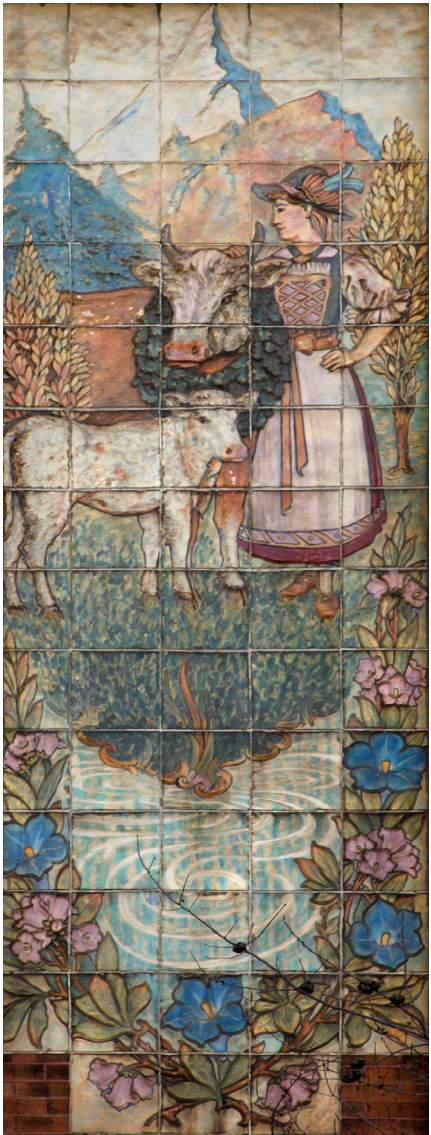
Key Plan



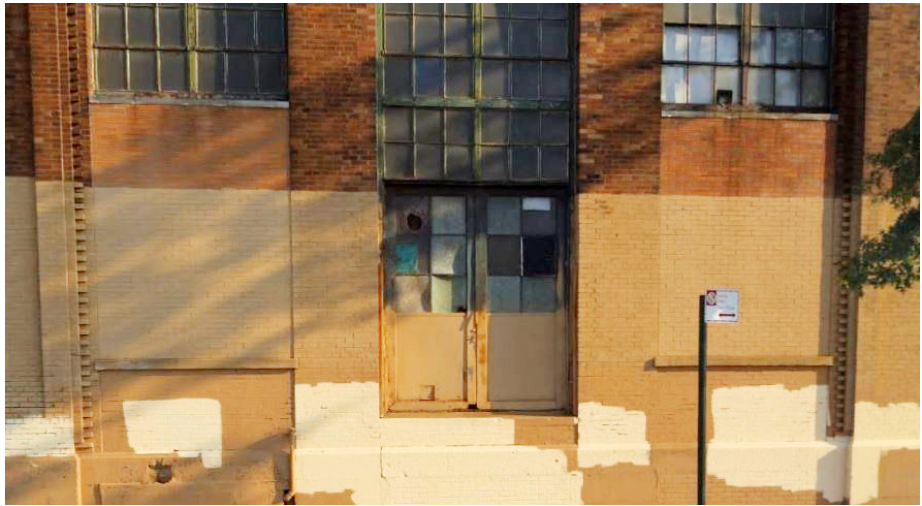
E. Interior of Monumental Entry Window



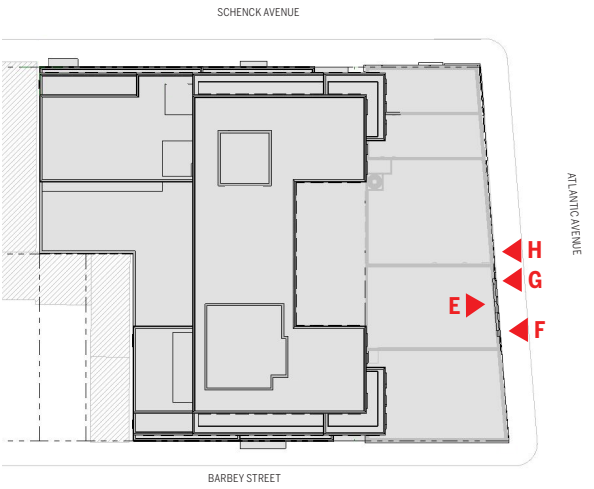
F. Historic Terracotta Tile at Atlantic Ave Entrance - Detail



G. Historic Terracotta Tile at Atlantic Ave Entrance - Detail



H. Infill at Monumental Entry Windows



Key Plan



A. Overall View of Landmarked Building from Atlantic Ave



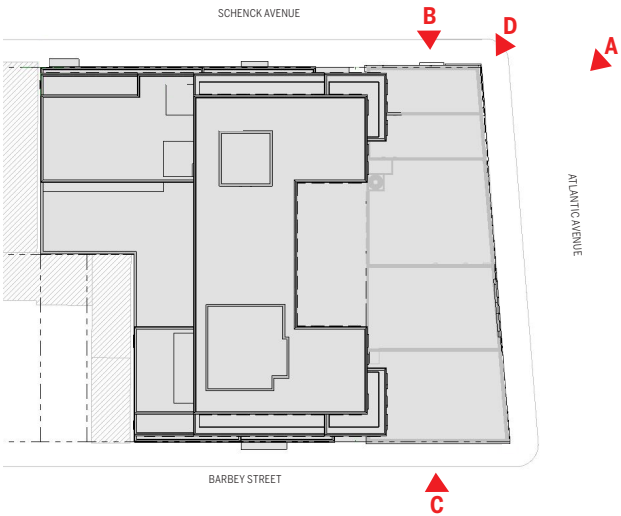
B. Infill at Base of Building on Schenck Street



C. Infill at Base of Building on Barbey Street



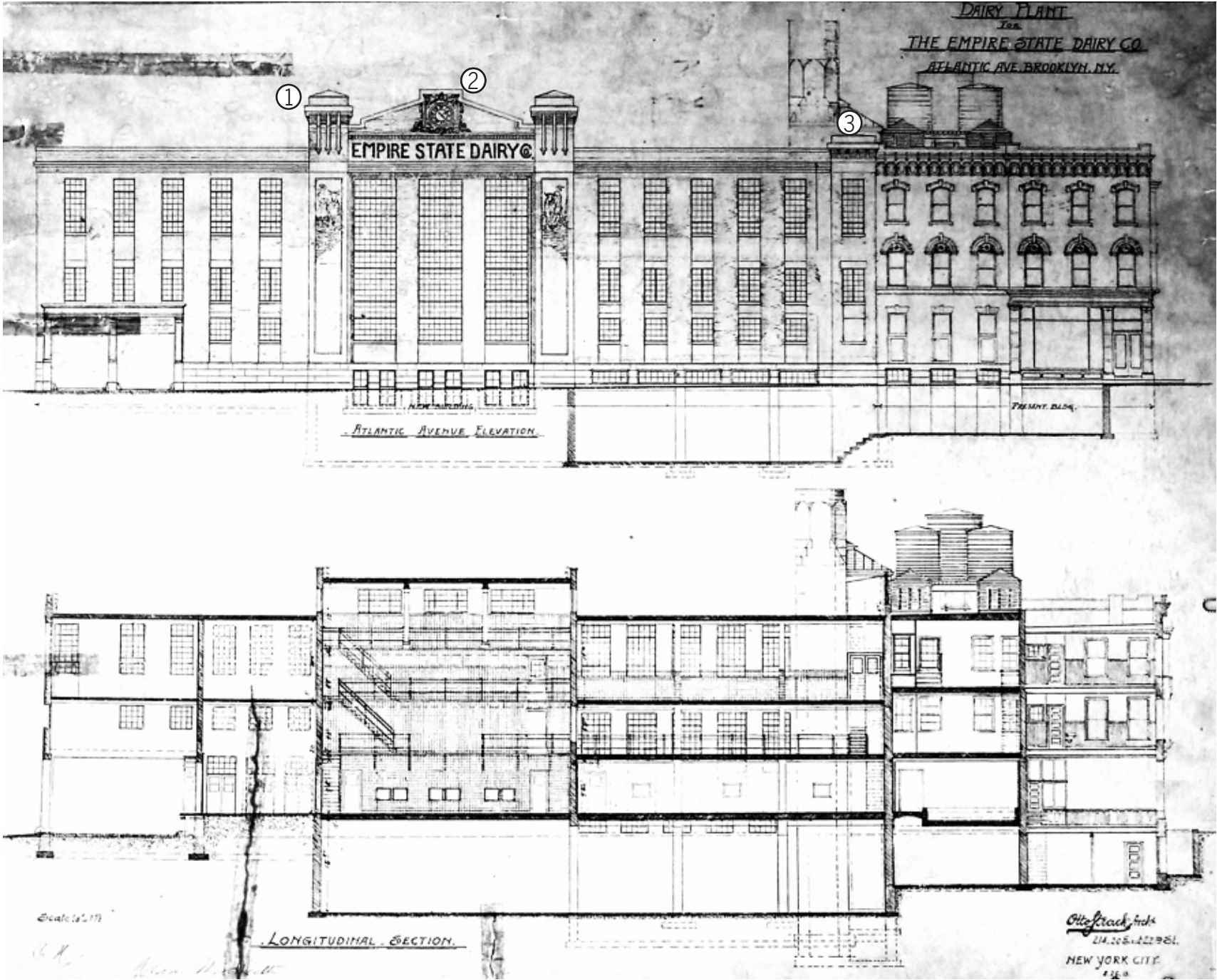
D. Infill at Schenck and Atlantic Corner



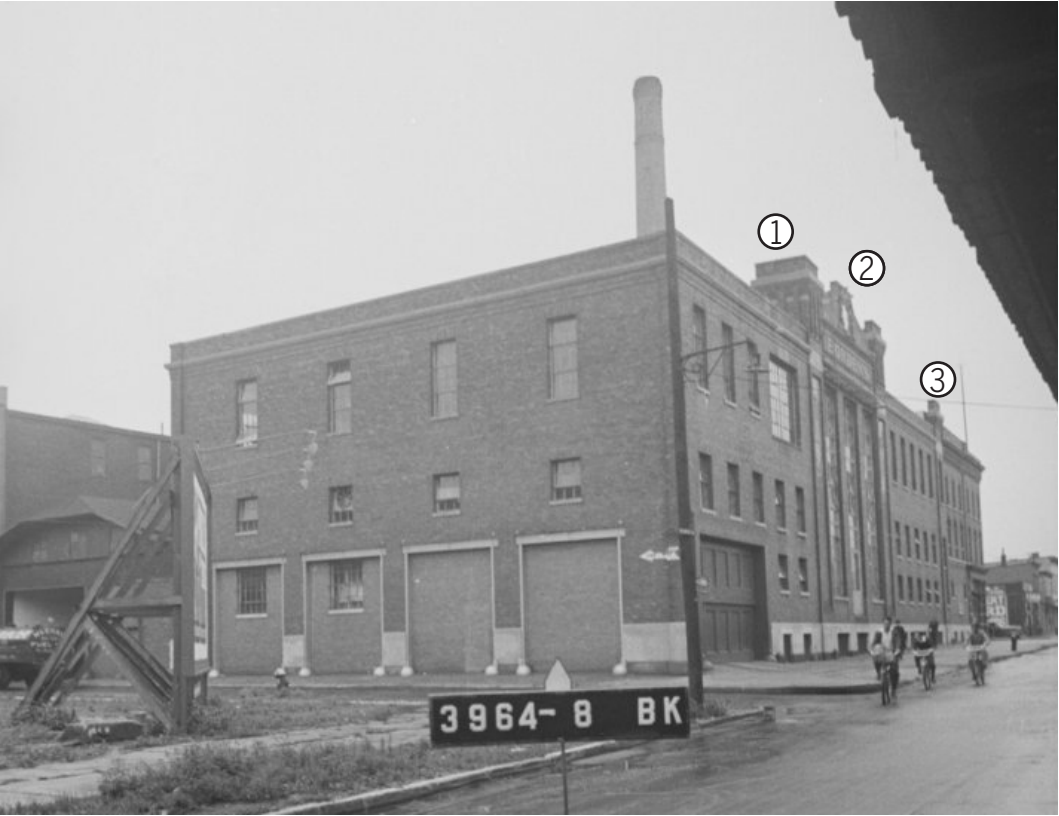
Key Plan

- ① ENTRY PIERS TO BE RE-ESTABLISHED TO AS THEY APPEAR IN 1940 TAX PHOTO.
- ② ENTRY PEDIMENT TO BE RE-ESTABLISHED.
- ③ PIER AND PARAPET TO BE CONSTRUCTED.

Above: North Elevation Along Atlantic Ave
 Below: Building Section Looking South,



Building Drawings, 1913



Historic Photo at Corner of Atlantic Avenue and Barbey Street, 1940

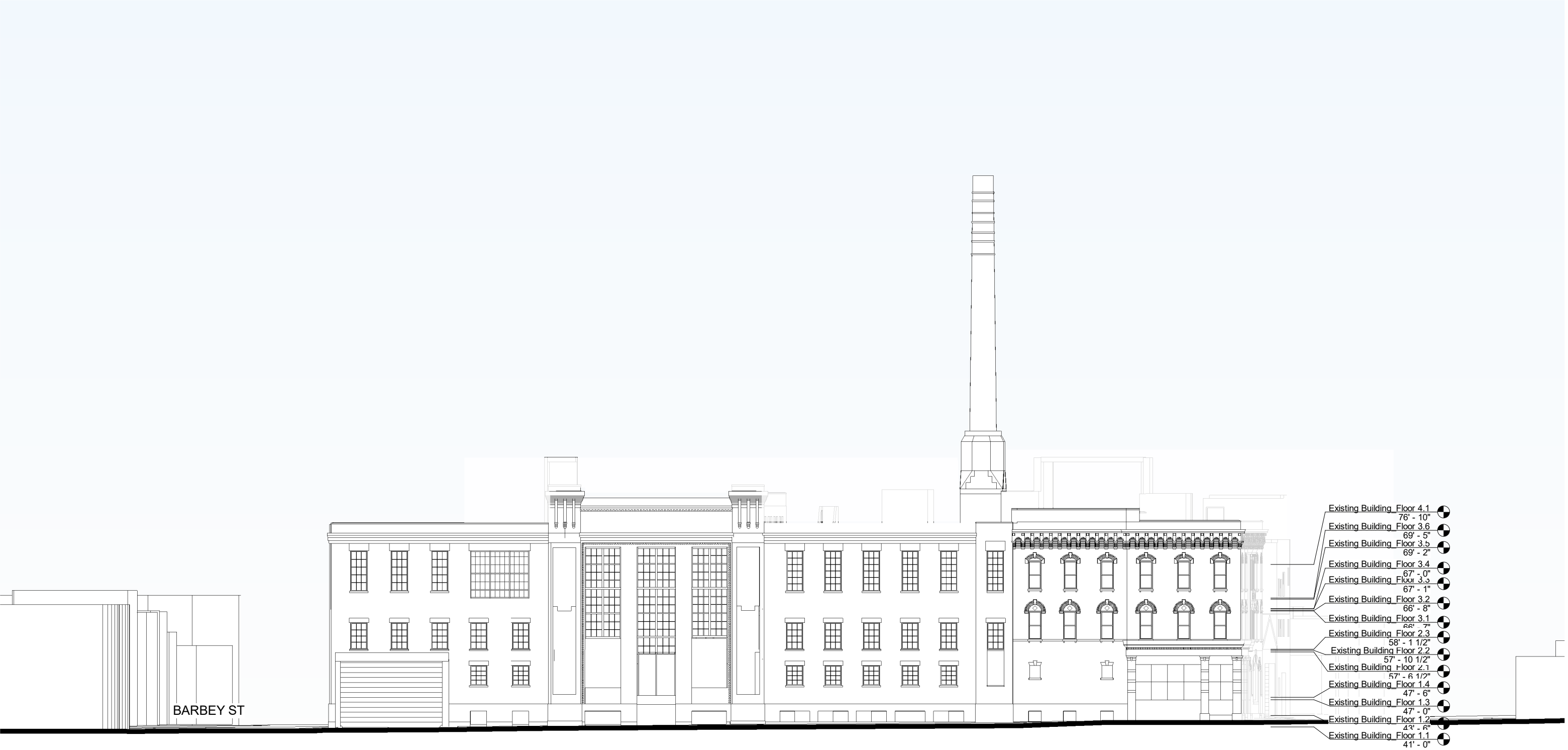


Historic Photo at Corner of Atlantic Avenue and Schenck Avenue, 1907

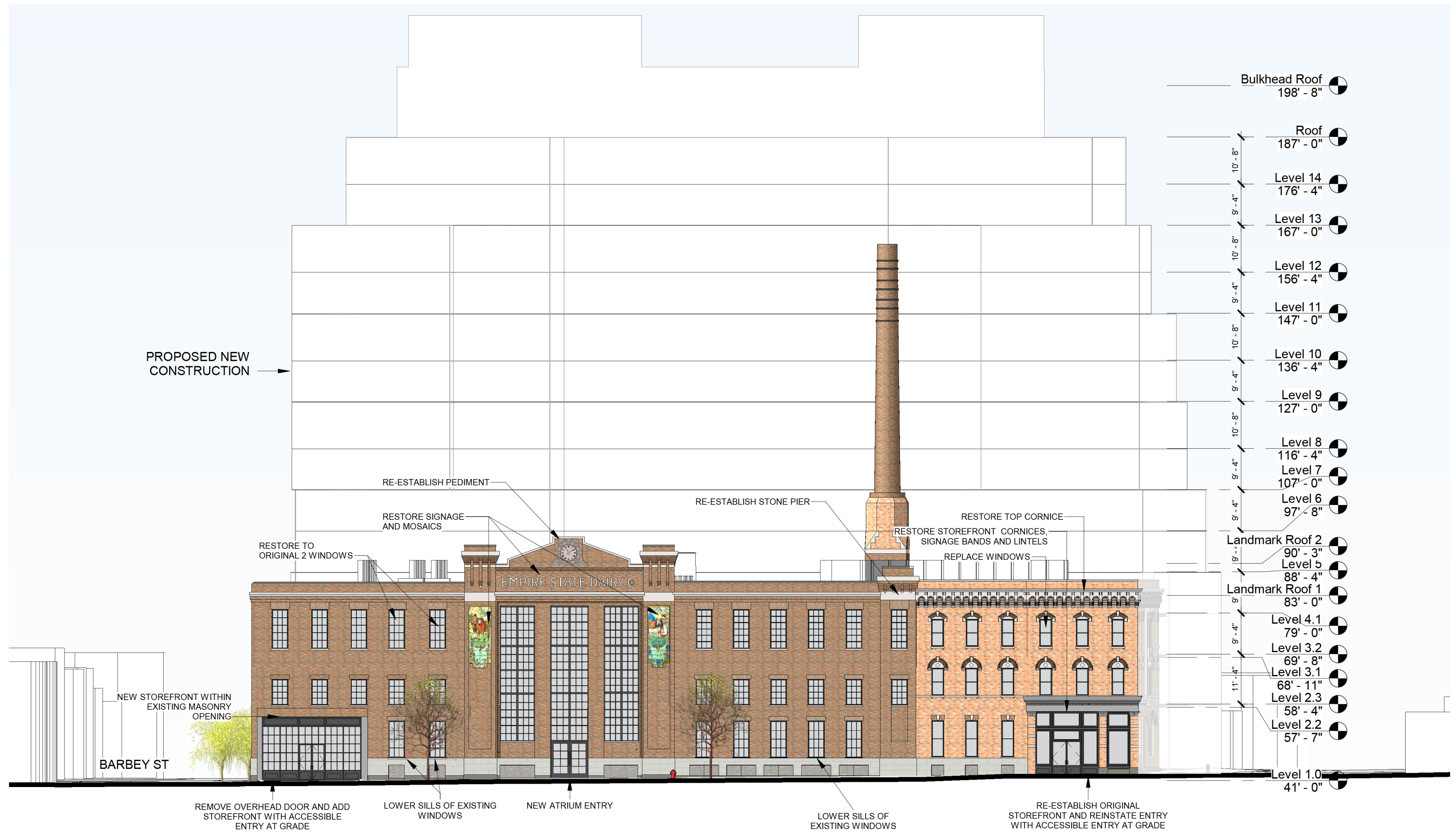


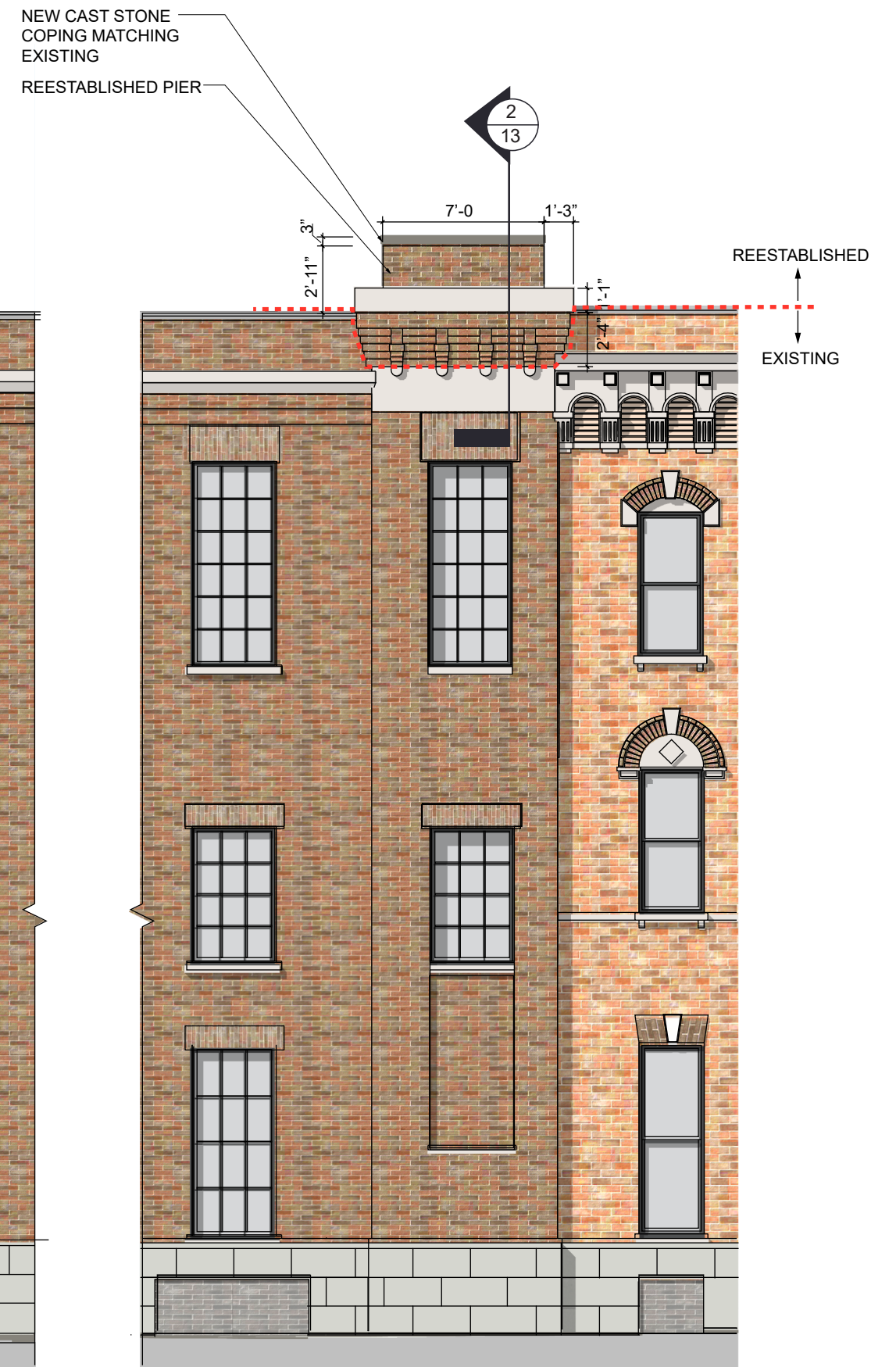
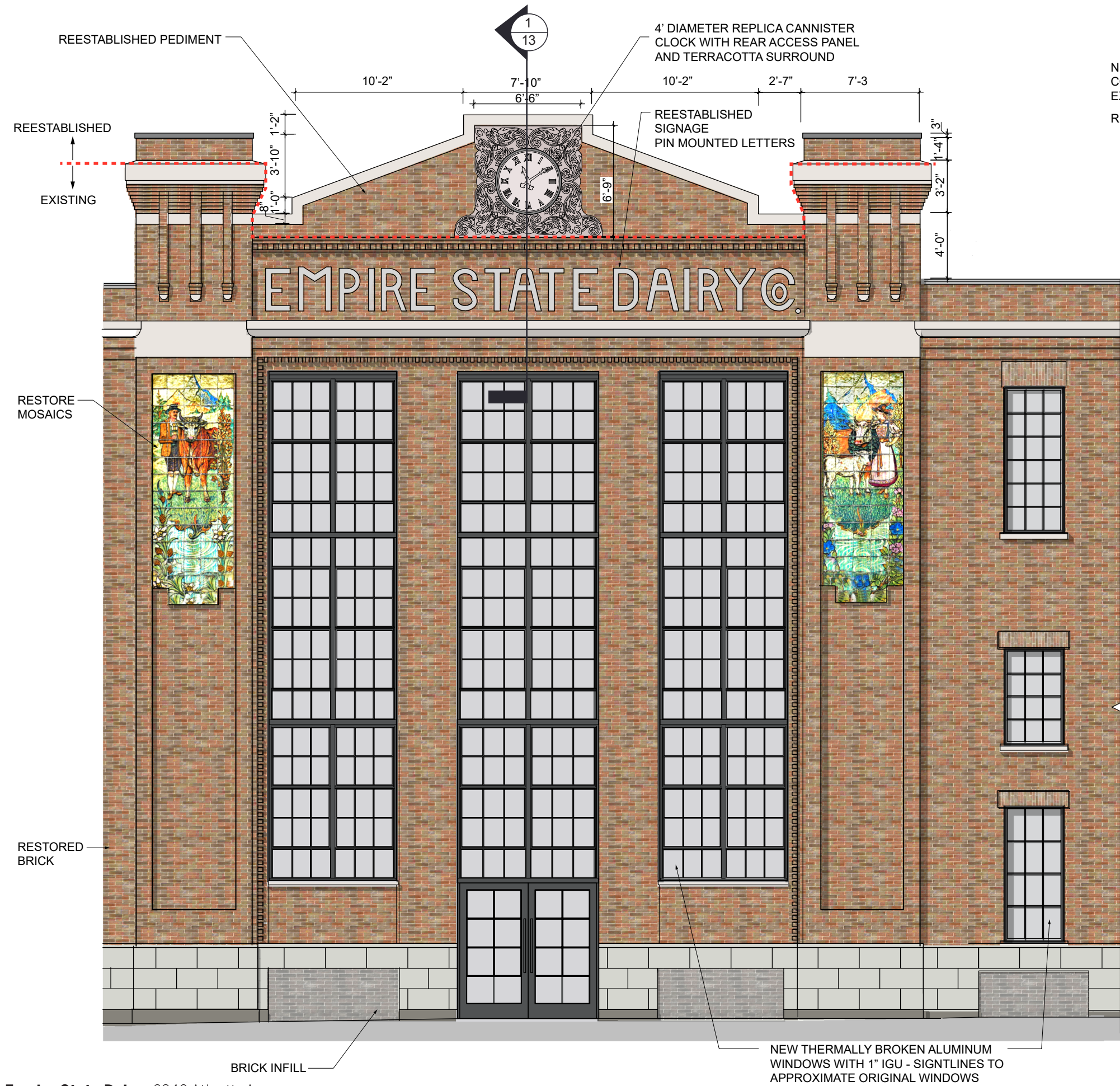


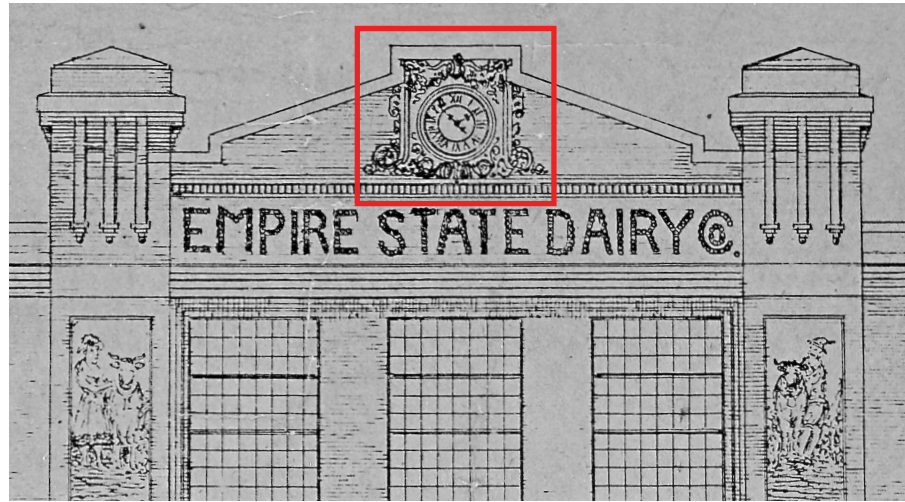








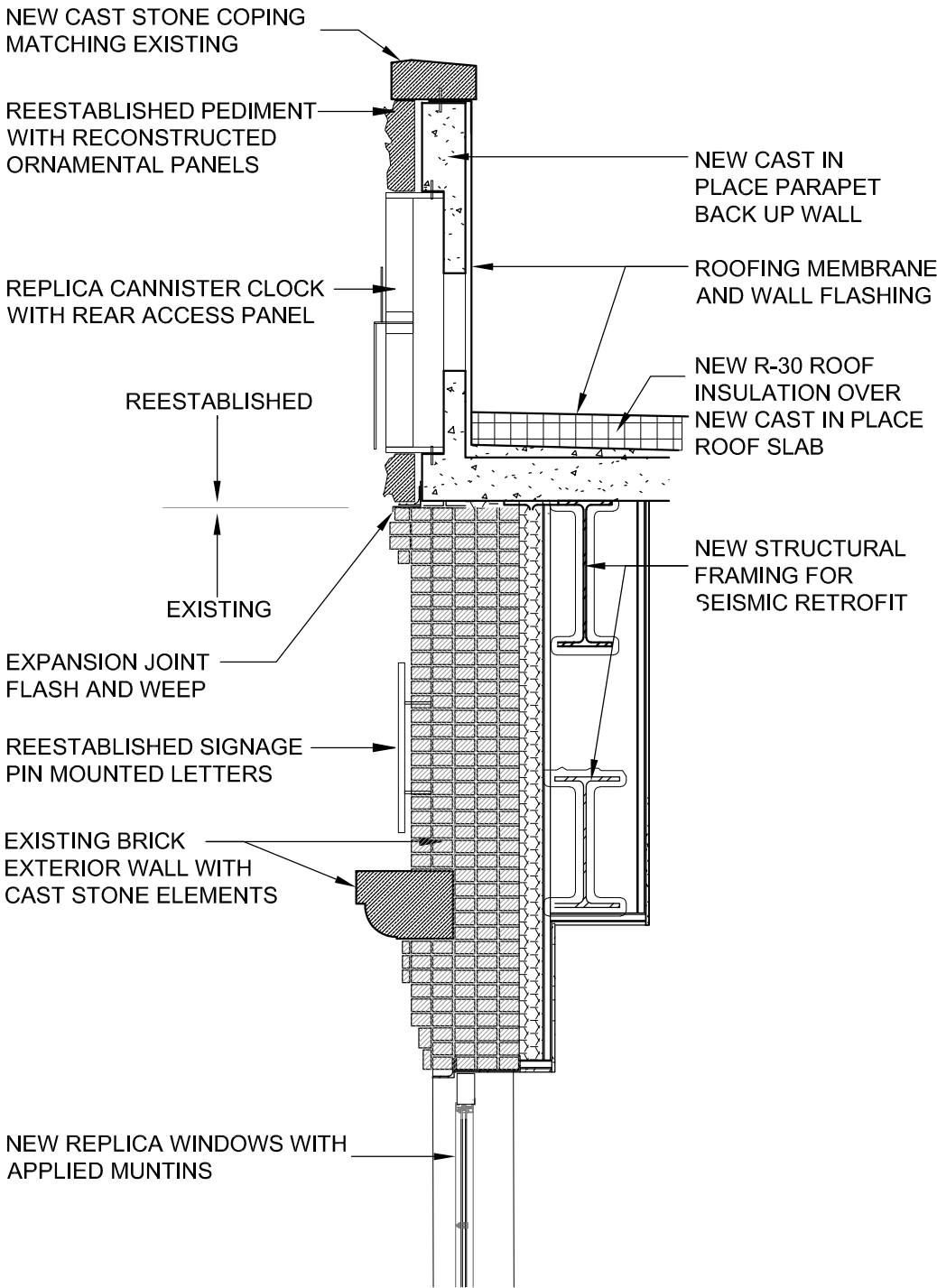




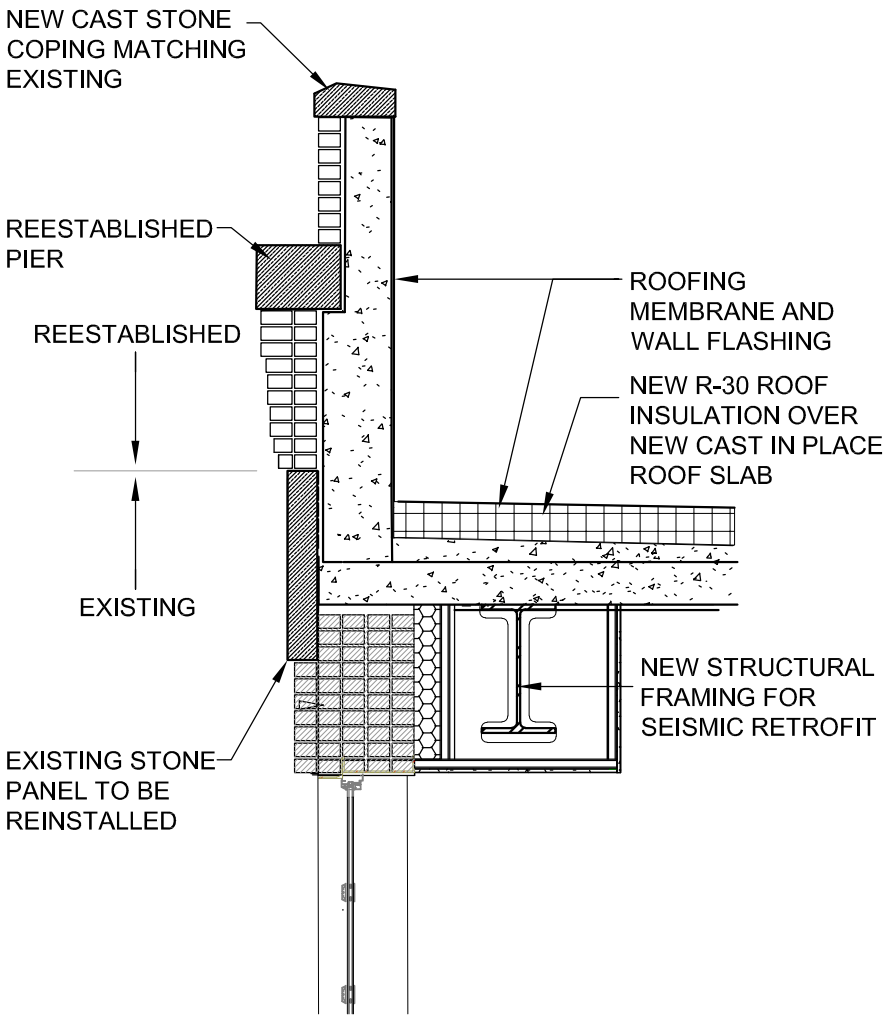
Original Schematic Drawing of Atlantic Ave Pediment



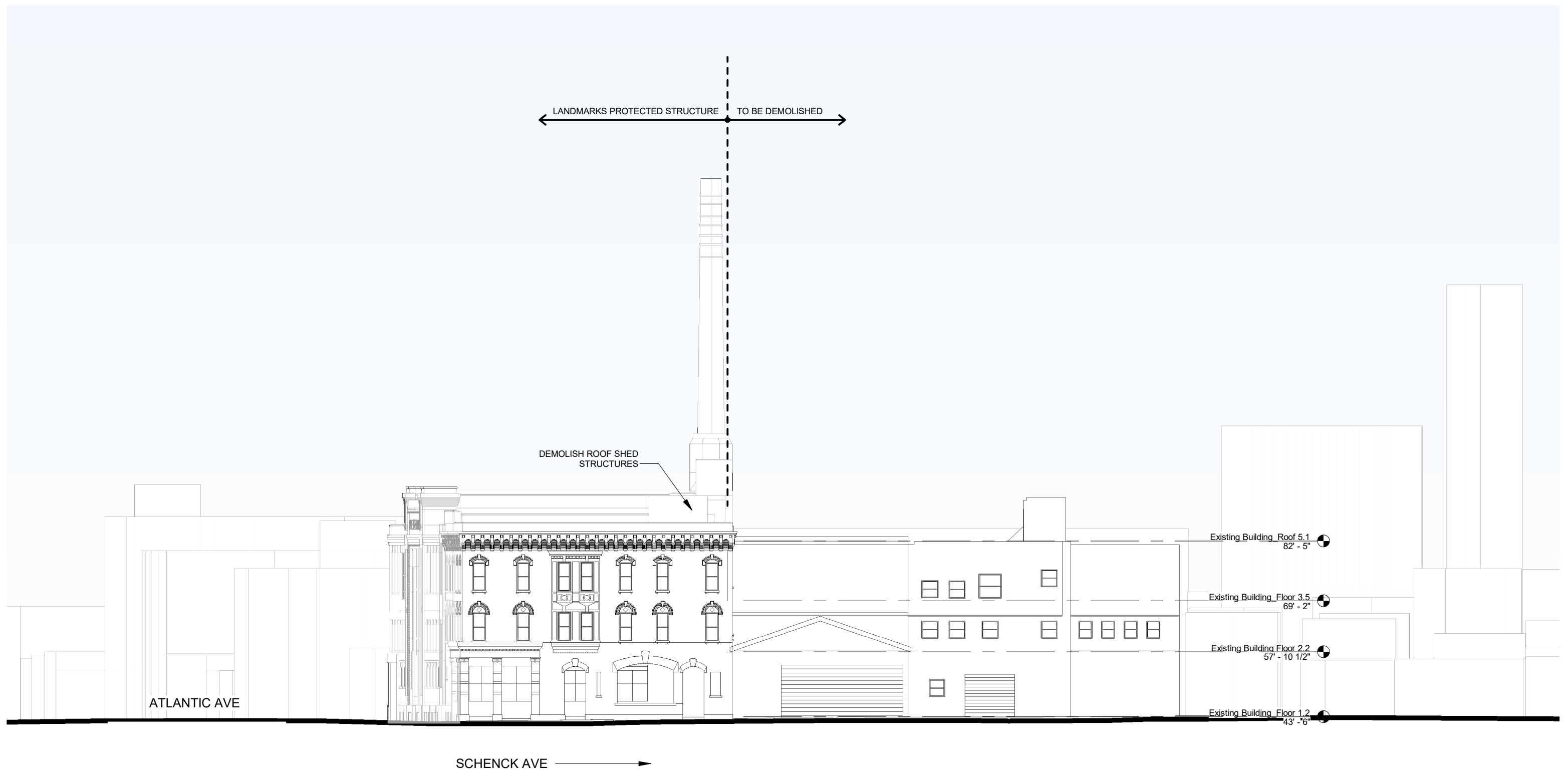
1940 Tax Photo - Enlarged Pediment



1 Section Through Pediment
3/8" = 1'-0"

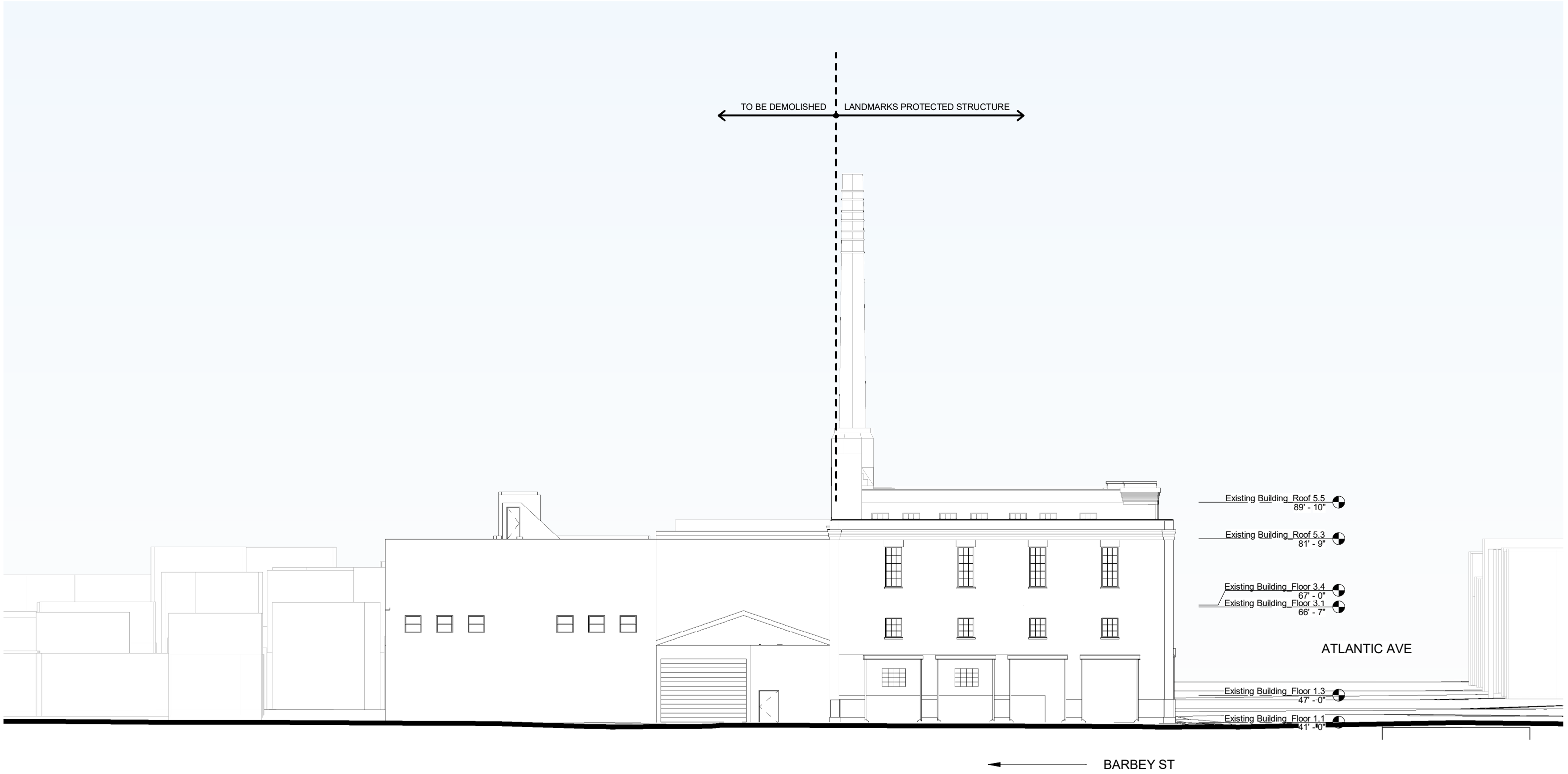


2 Typ. Section Through Pier
3/8" = 1'-0"











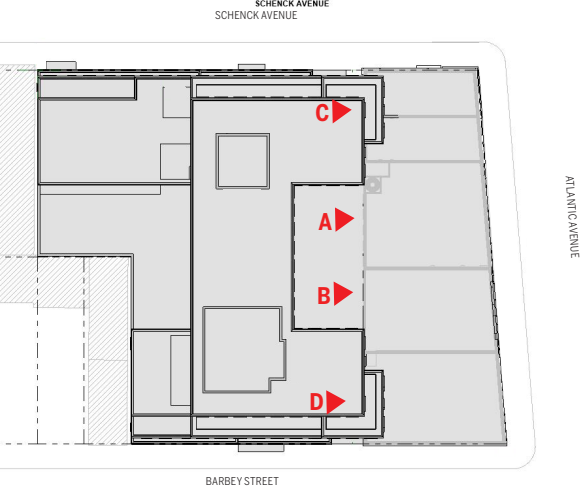




A.



B.



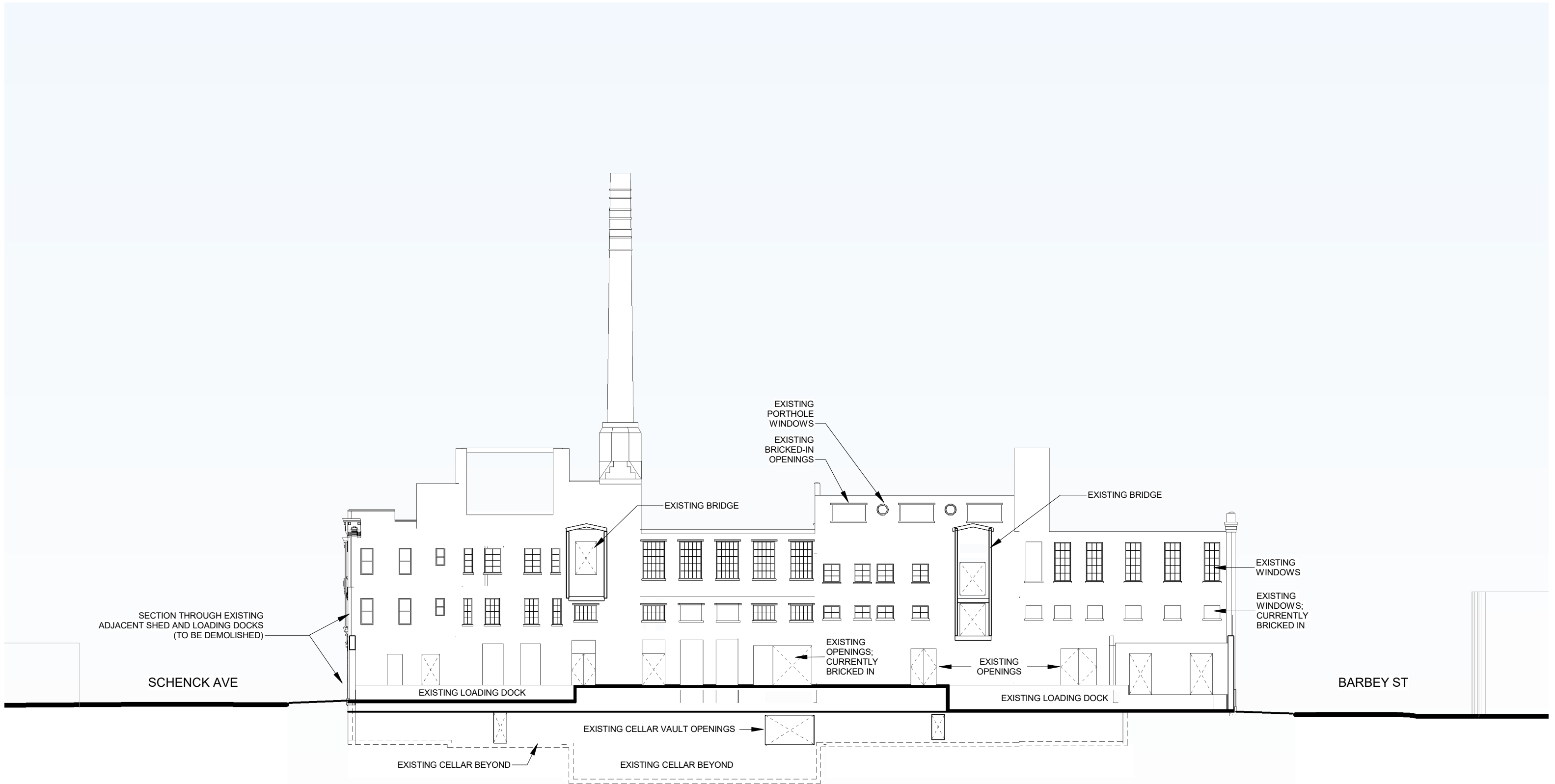
Key Plan

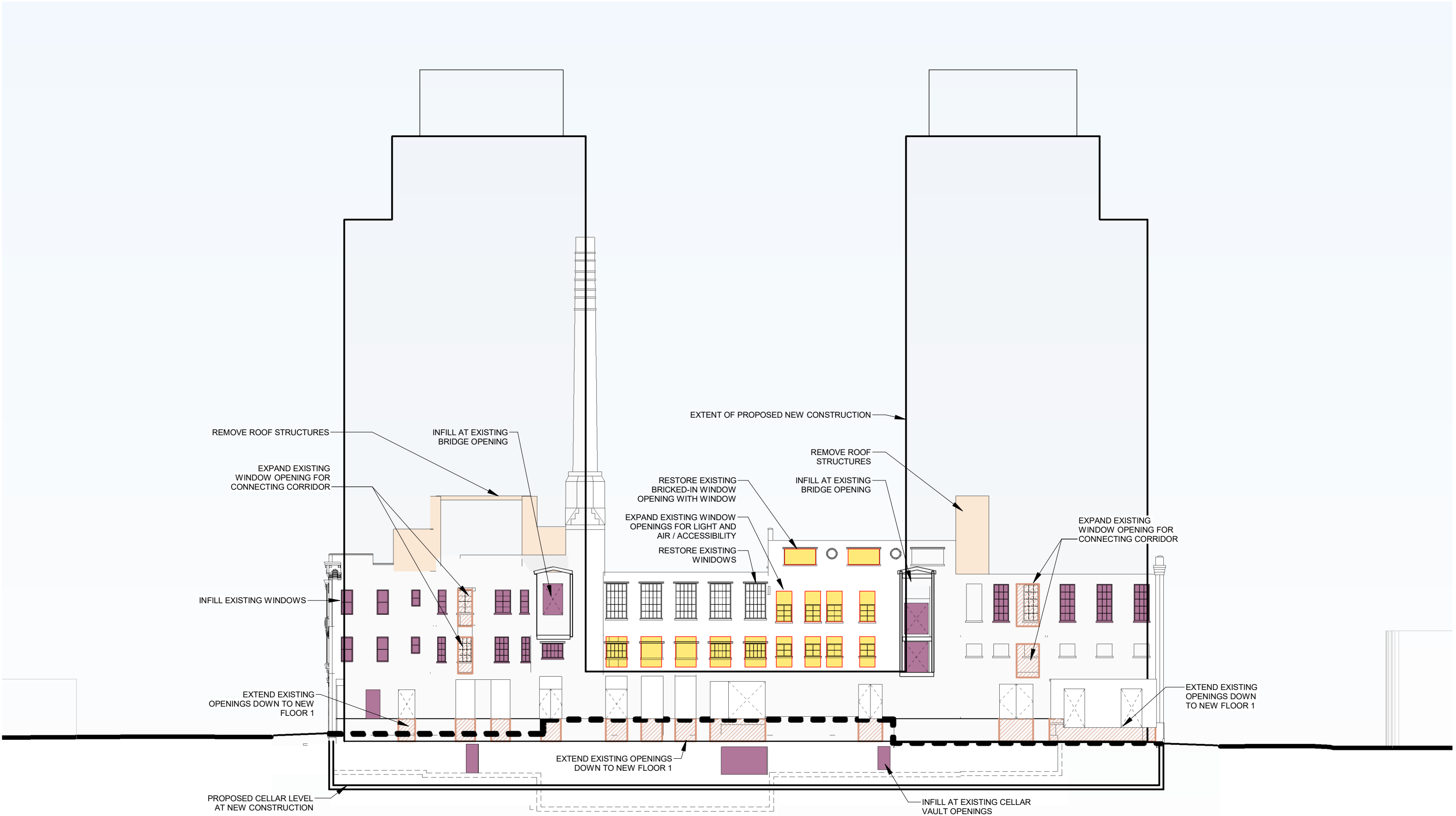


C.

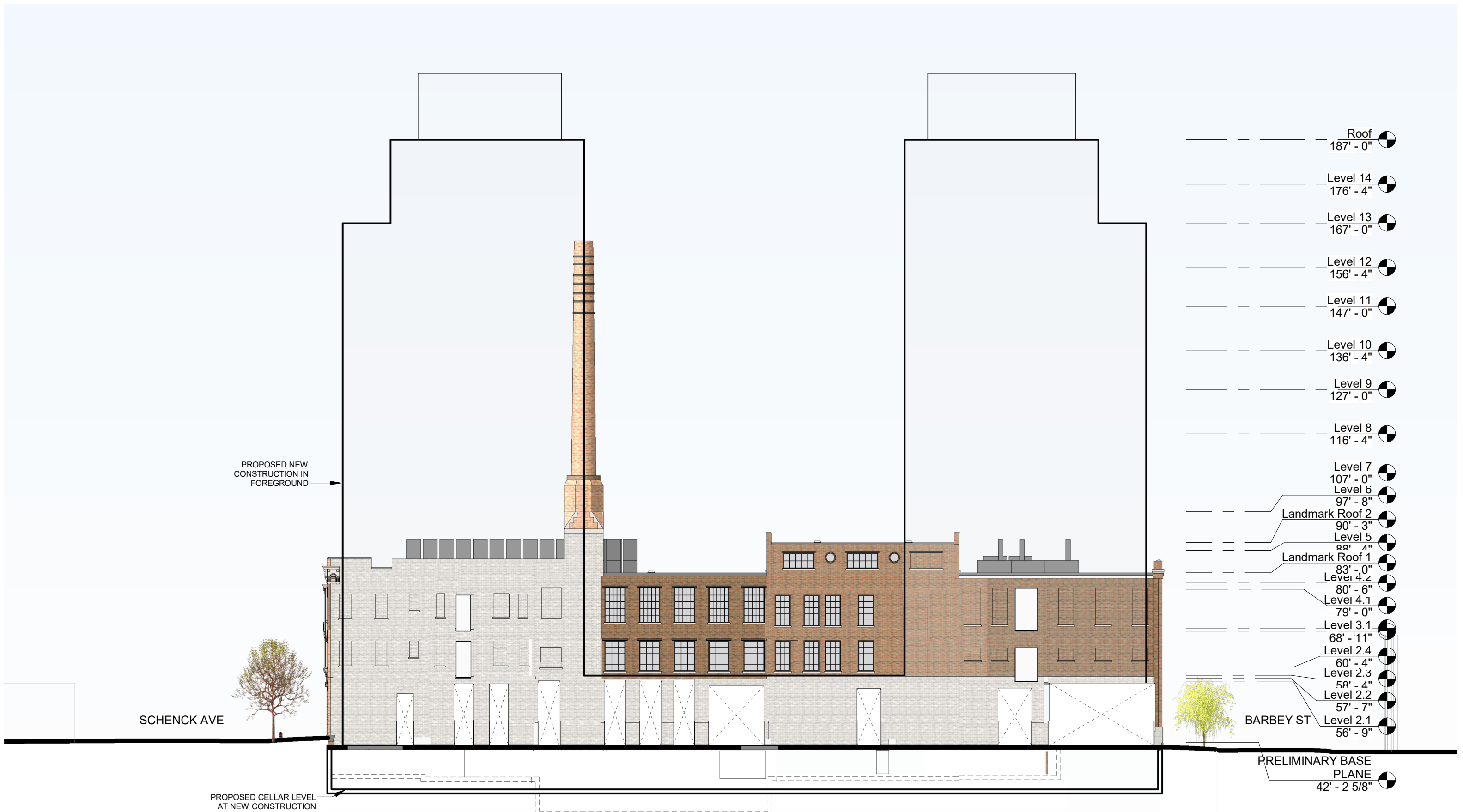


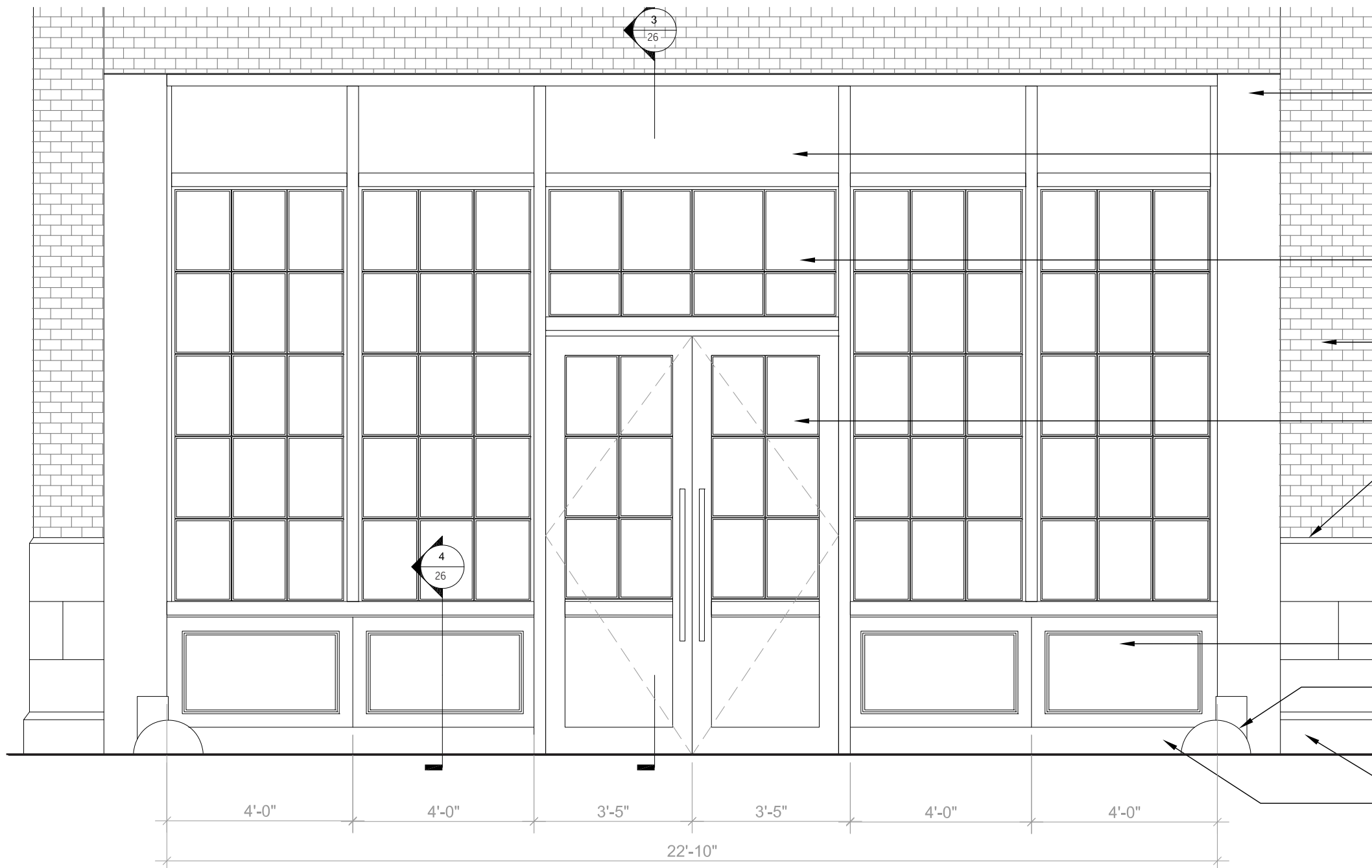
D.



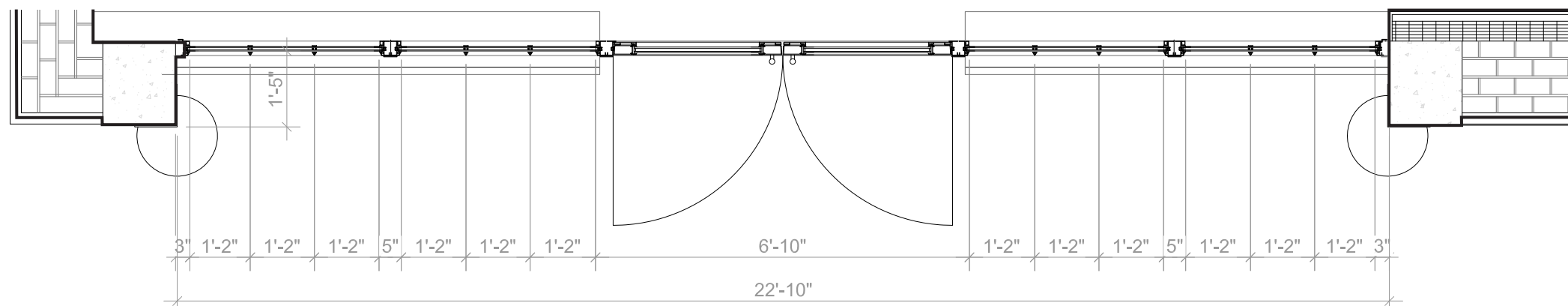




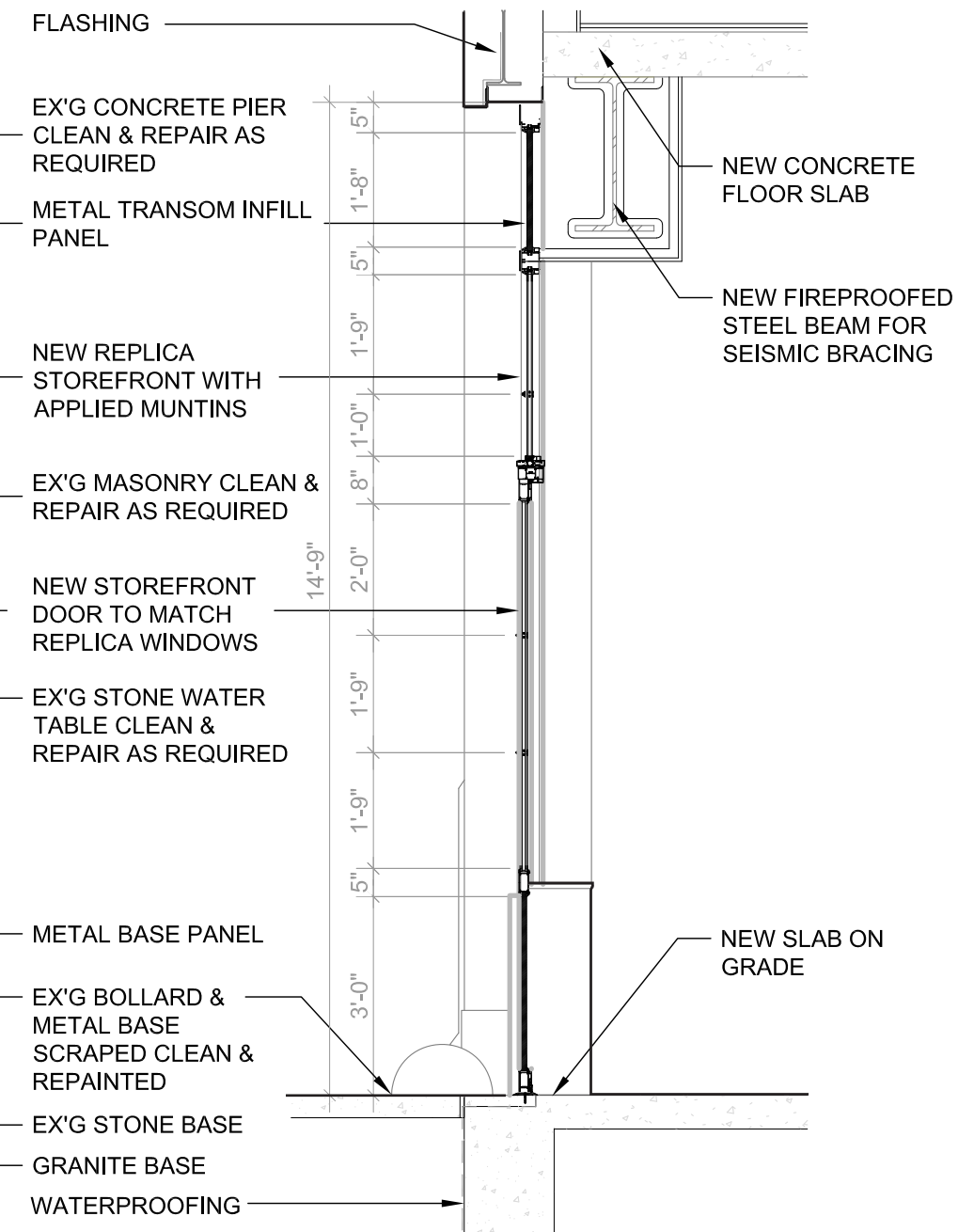




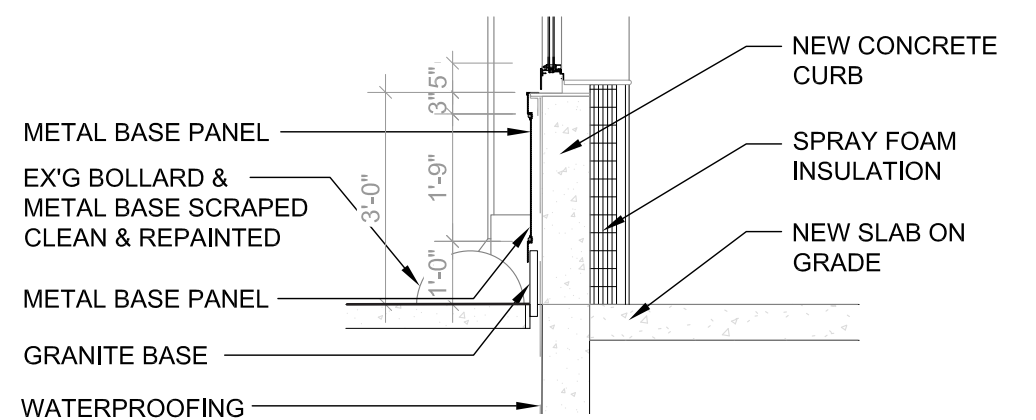
1 Typ. Storefront Elevation
3/8" = 1'-0"



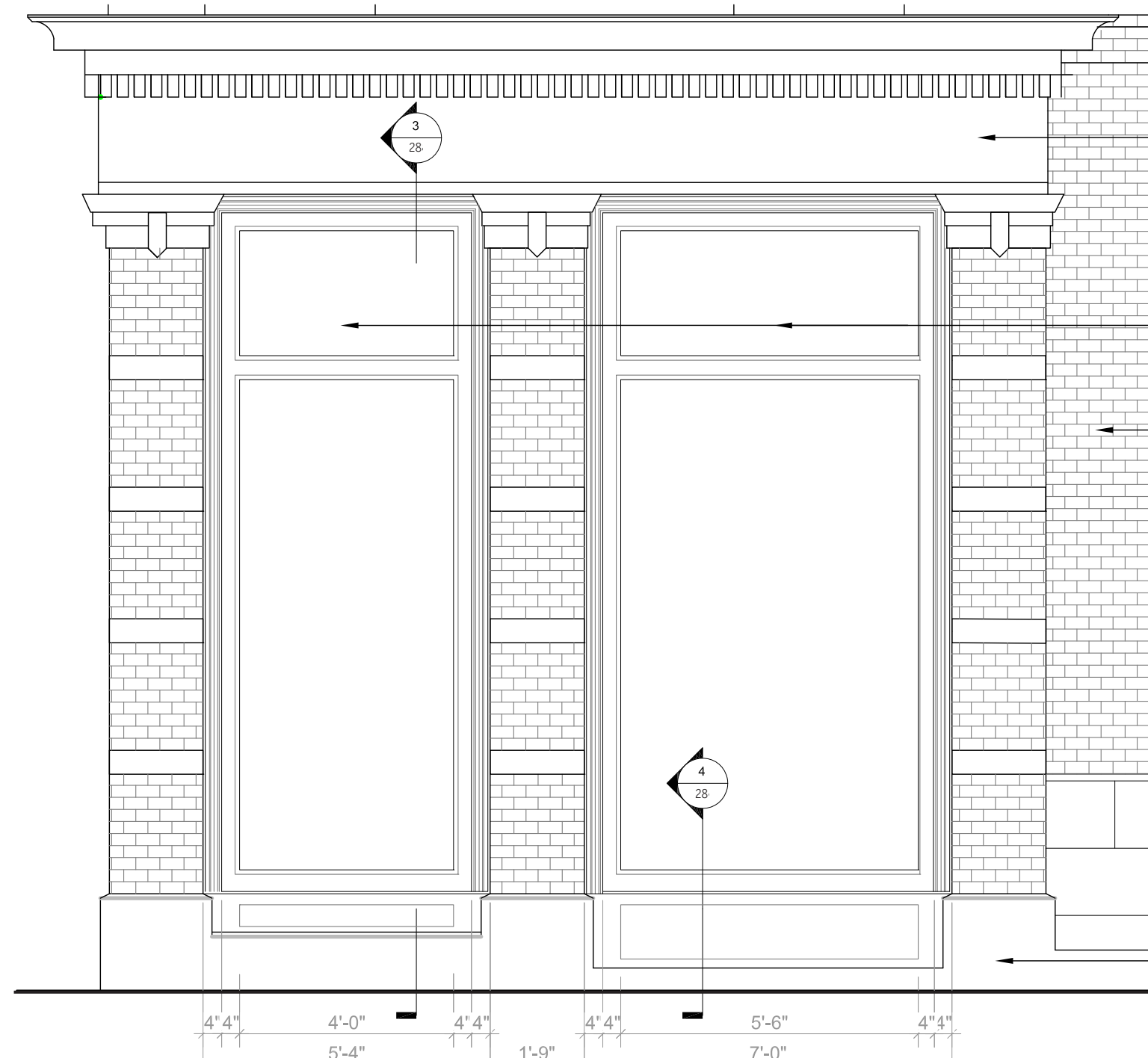
2 Typ. Storefront Plan
3/8" = 1'-0"



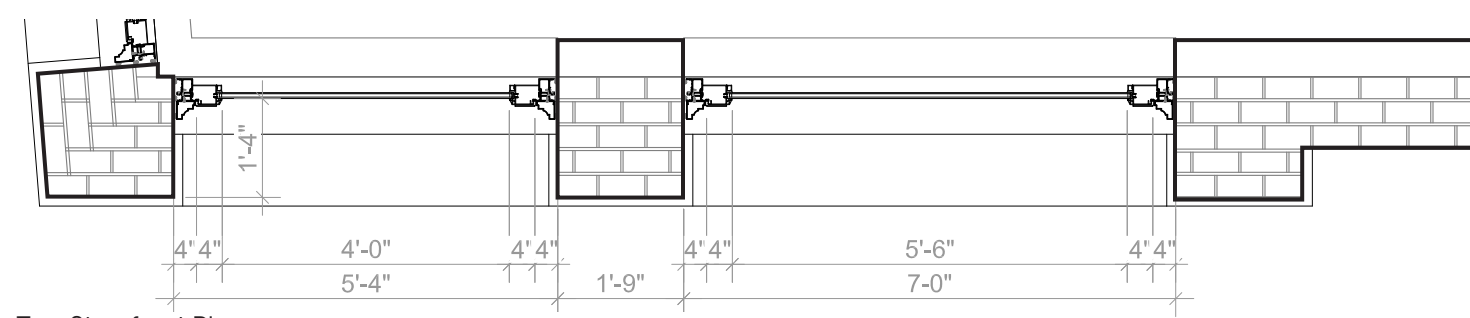
3 Typ. Storefront Section @ Door
3/8" = 1'-0"



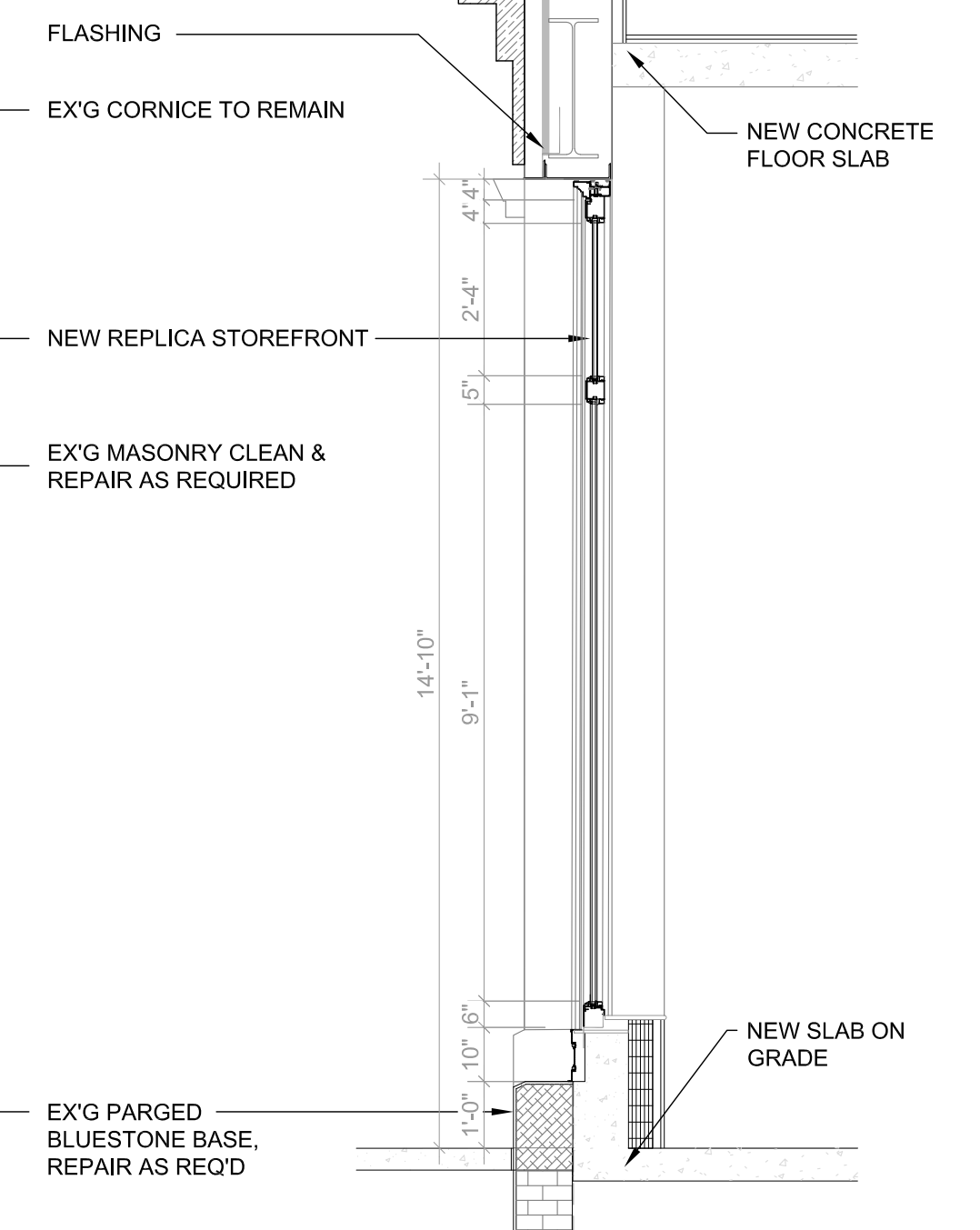
4 Typ. Storefront Section @ Bulkhead
3/8" = 1'-0"



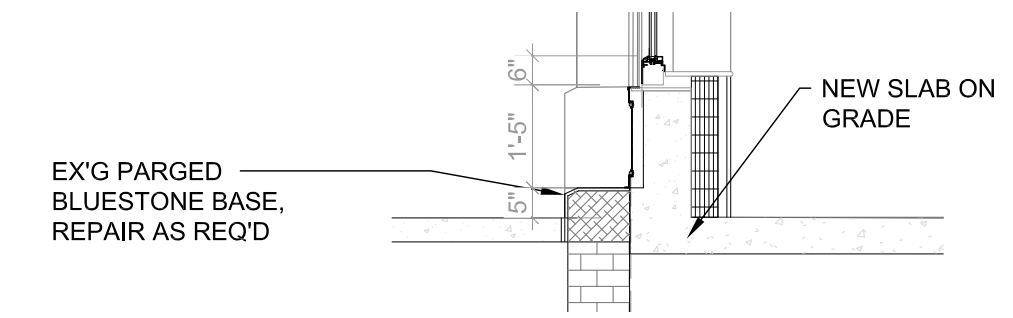
1 Typ. Storefront Elevation
3/8" = 1'-0"



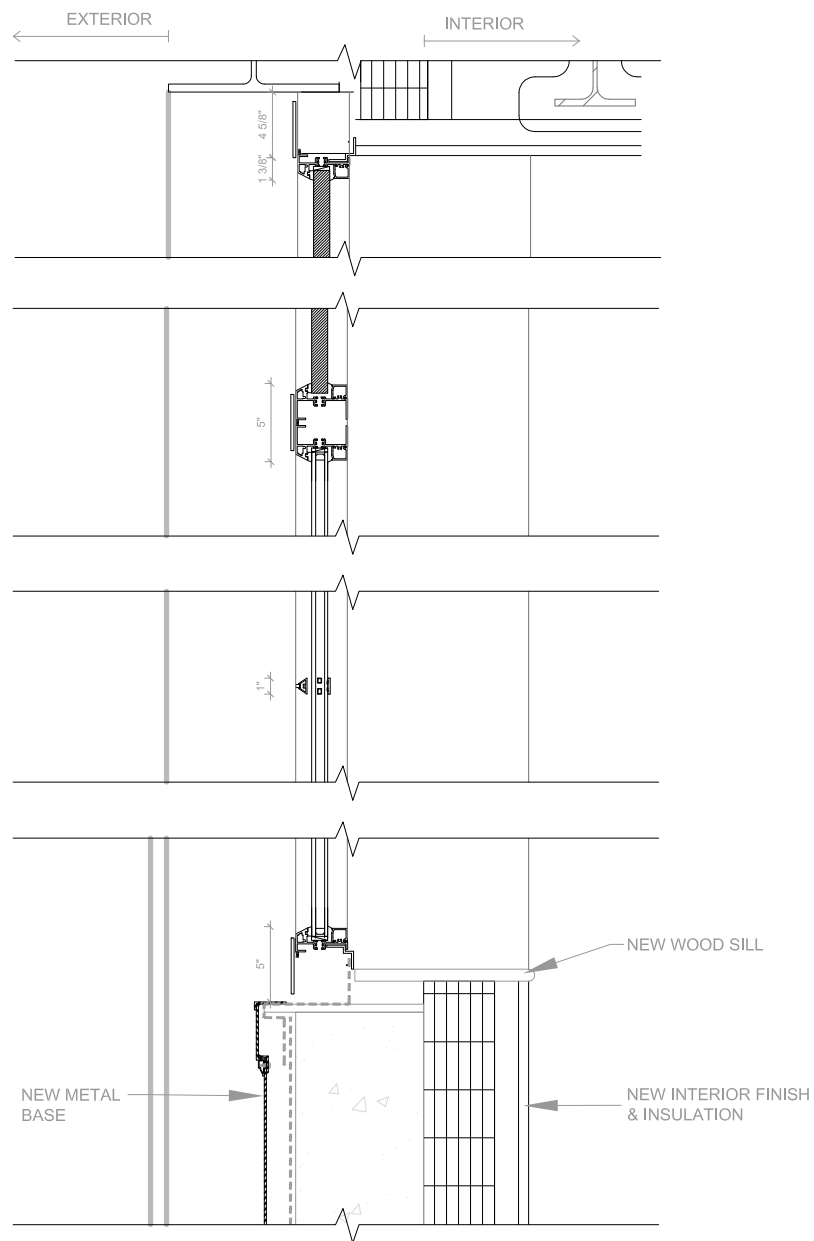
2 Typ. Storefront Plan
3/8" = 1'-0"



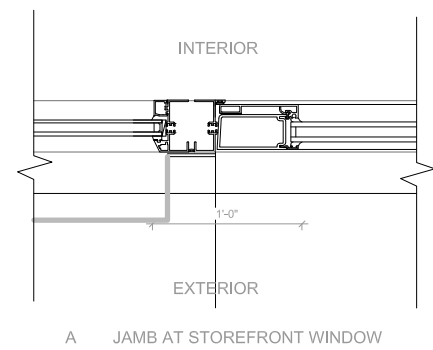
3 Schenck Storefront Section 01
3/8" = 1'-0"



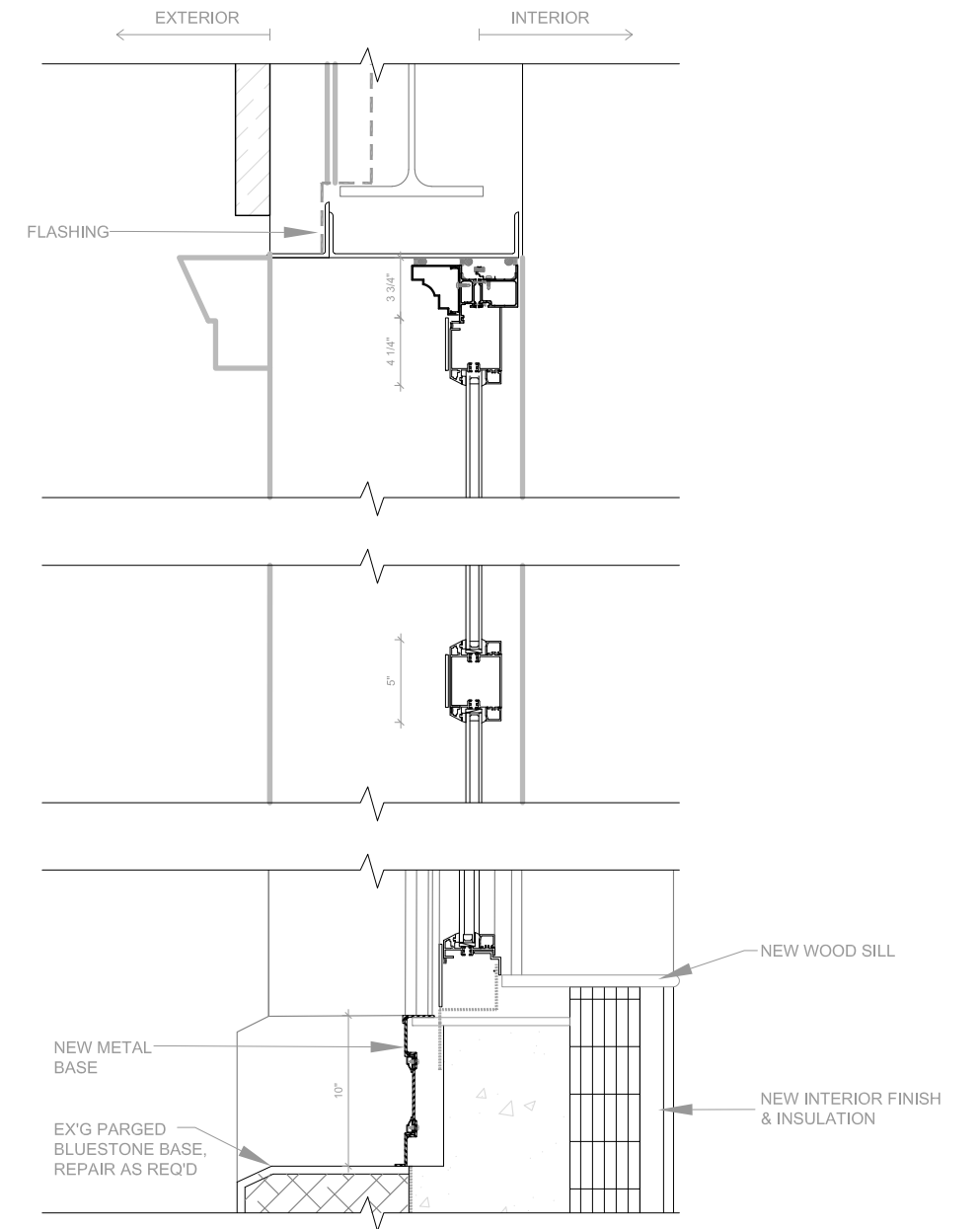
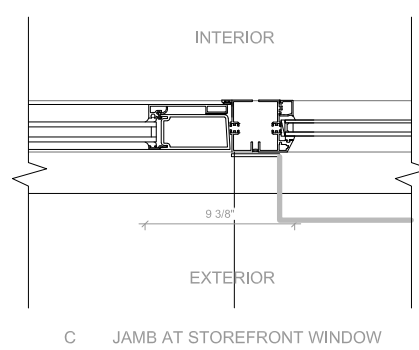
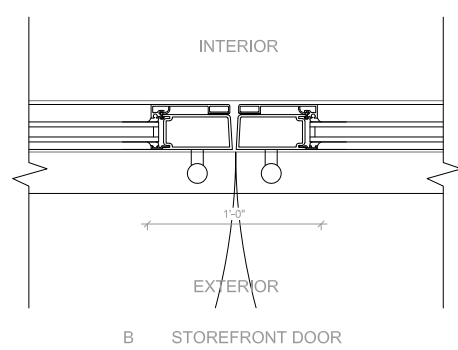
4 Schenck Storefront Section 02
3/8" = 1'-0"



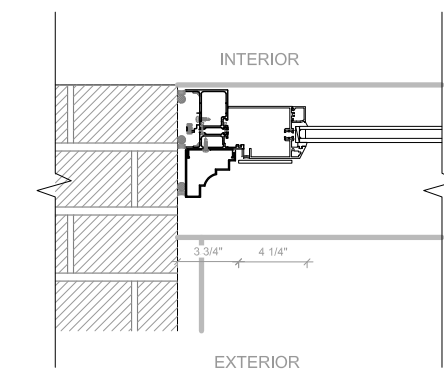
1 Typ. Storefront Window Details - Barbey St
1" = 1'-0"



4 Typ. Storefront Door Plan Details - Atlantic Ave
1" = 1'-0"



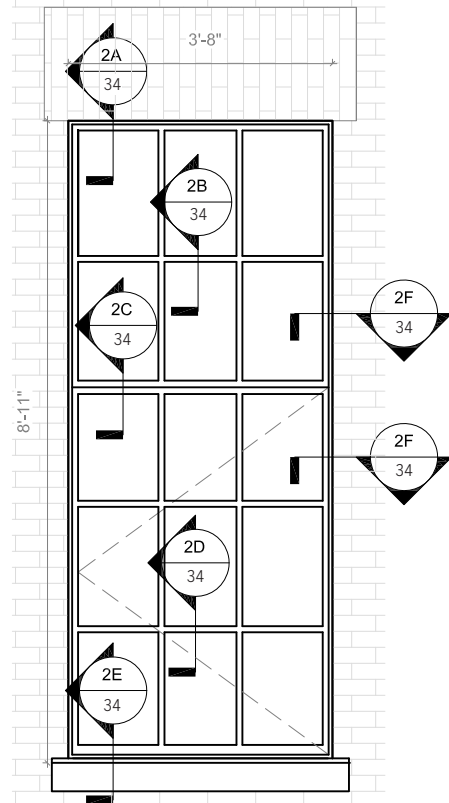
3 Typ. Storefront Window Details - Englehardt
1" = 1'-0"



5 Typ. Storefront Window Plan Detail - Englehardt
1" = 1'-0"



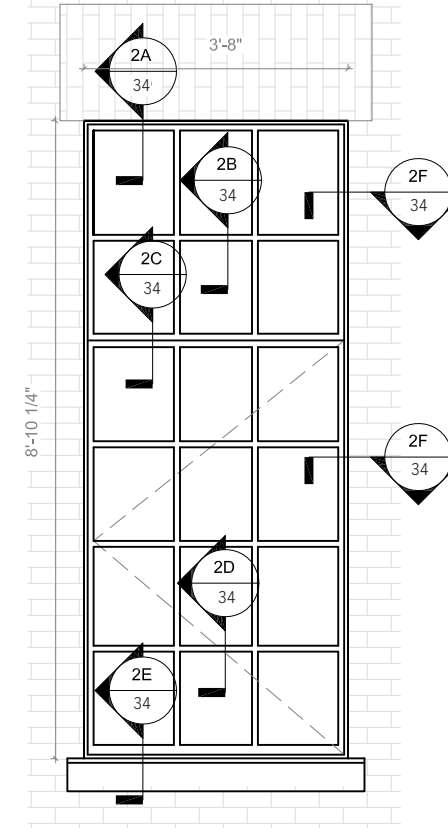
1 Ex'g Strack Bldg Barbey & Atlantic
FL 3 Window W1B
3/8" = 1'-0"



2 Proposed Strack Bldg Barbey
& Atlantic FL 3 Window W1B
3/8" = 1'-0"



3 Ex'g Strack Bldg Atlantic
FL 3 Window W1C
3/8" = 1'-0"

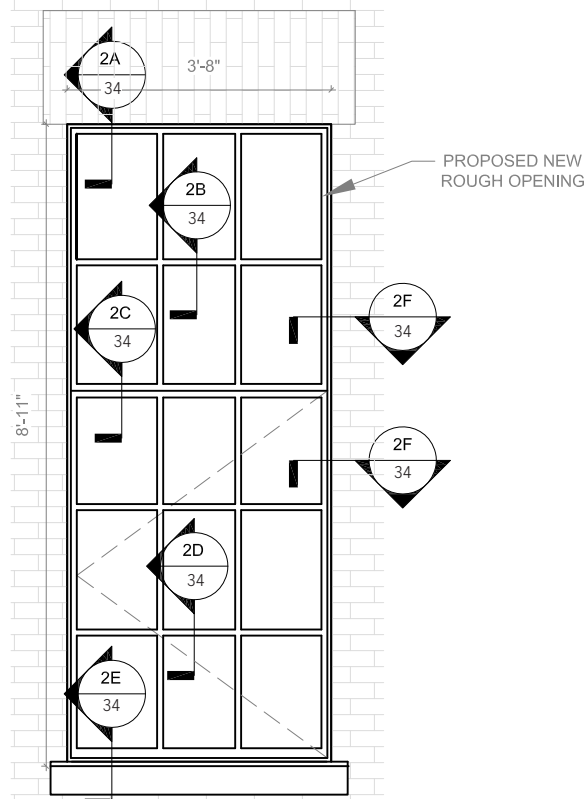


4 Proposed Strack Bldg
Atlantic FL 3 Window W1C
3/8" = 1'-0"

- General Notes:
1. Overall dimensions shown are masonry rough openings. Existing rough opening to be maintained/unaltered unless specifically noted.
 2. New replica windows to be thermally broken aluminum casement windows with 1" IGU - sightlines to approximate original windows
 3. Window lites to be divided into panels of equal height and width.



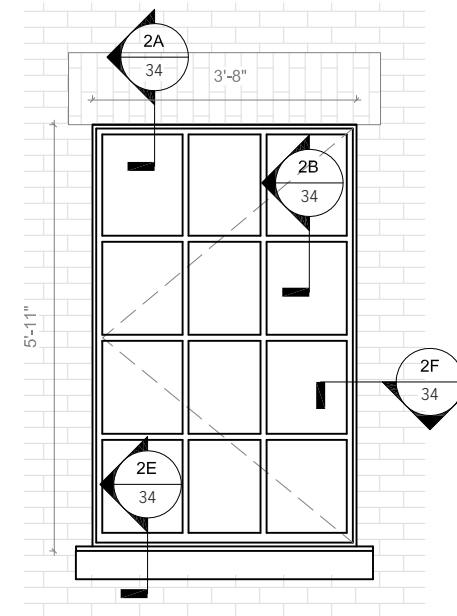
5 Ex'g Strack Bldg Barbey FL 2 Window W1A
3/8" = 1'-0"



6 Proposed Strack Bldg Barbey FL 2 Window W1A
3/8" = 1'-0"



7 Ex'g Strack Bldg Atlantic FL 2 Window W2
3/8" = 1'-0"



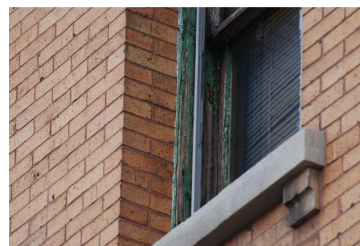
8 Proposed Strack Bldg Atlantic FL 2 Window W2
3/8" = 1'-0"



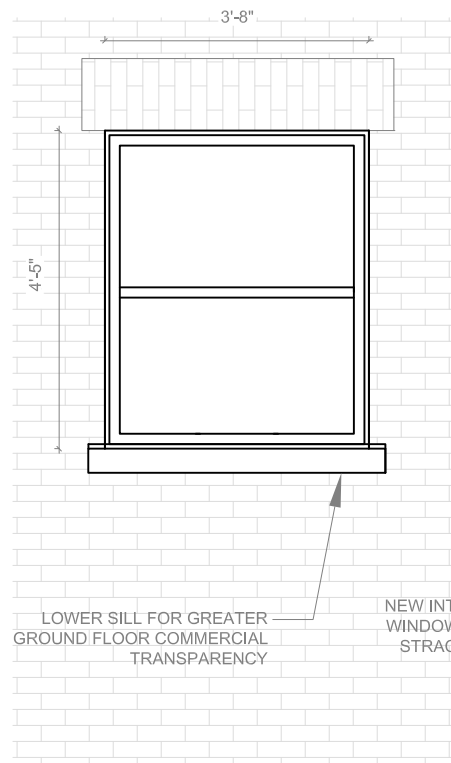
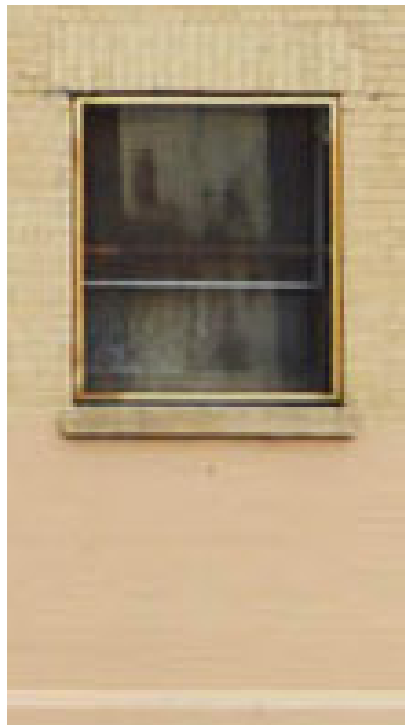
- General Notes:
1. Overall dimensions shown are masonry rough openings. Existing rough opening to be maintained/unaltered unless specifically noted.
 2. New replica windows to be thermally broken aluminum casement windows with 1" IGU - sightlines to approximate original windows
 3. Window lites to be divided into panels of equal height and width.



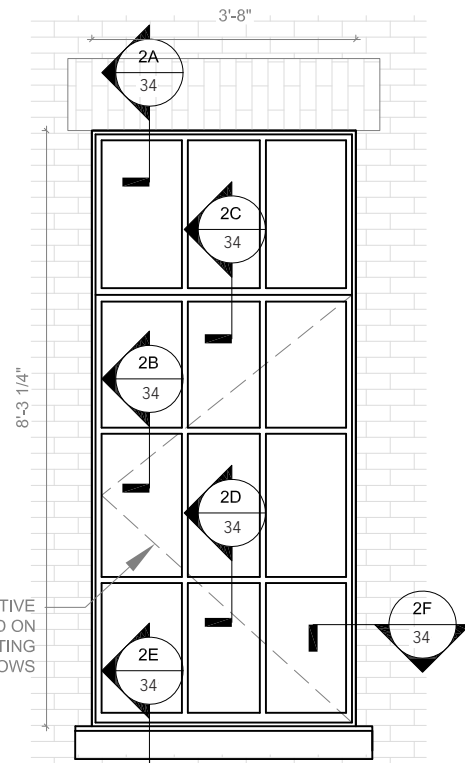
1 Ex'g Strack Bldg Windows Photos
NTS



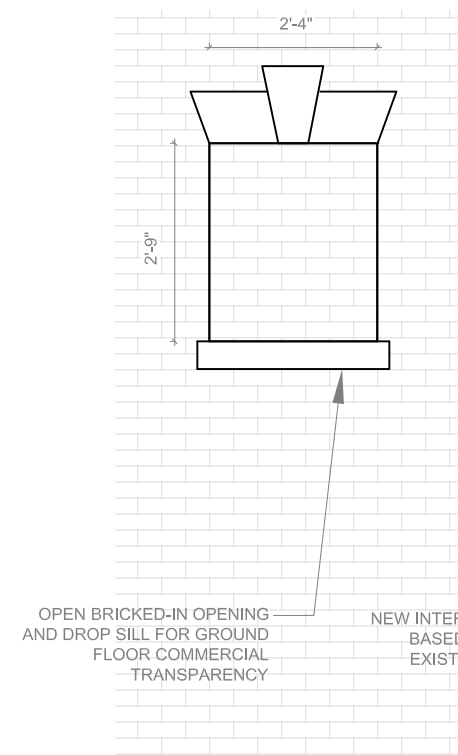
2 Ex'g Englehardt Bldg Windows Photos
NTS



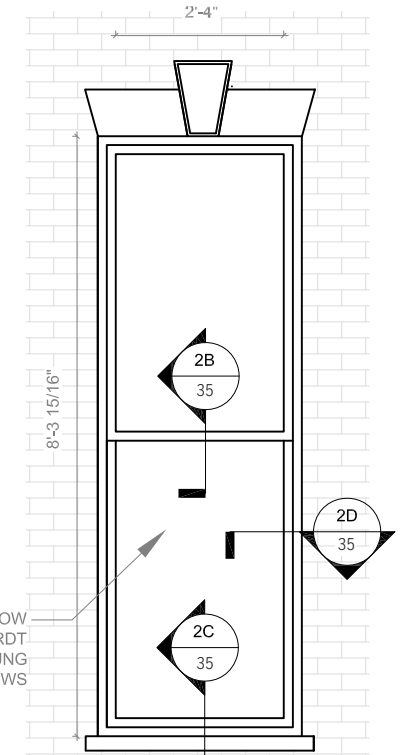
3 Ex'g Strack Bldg Atlantic FL 1 Window W11
3/8" = 1'-0"



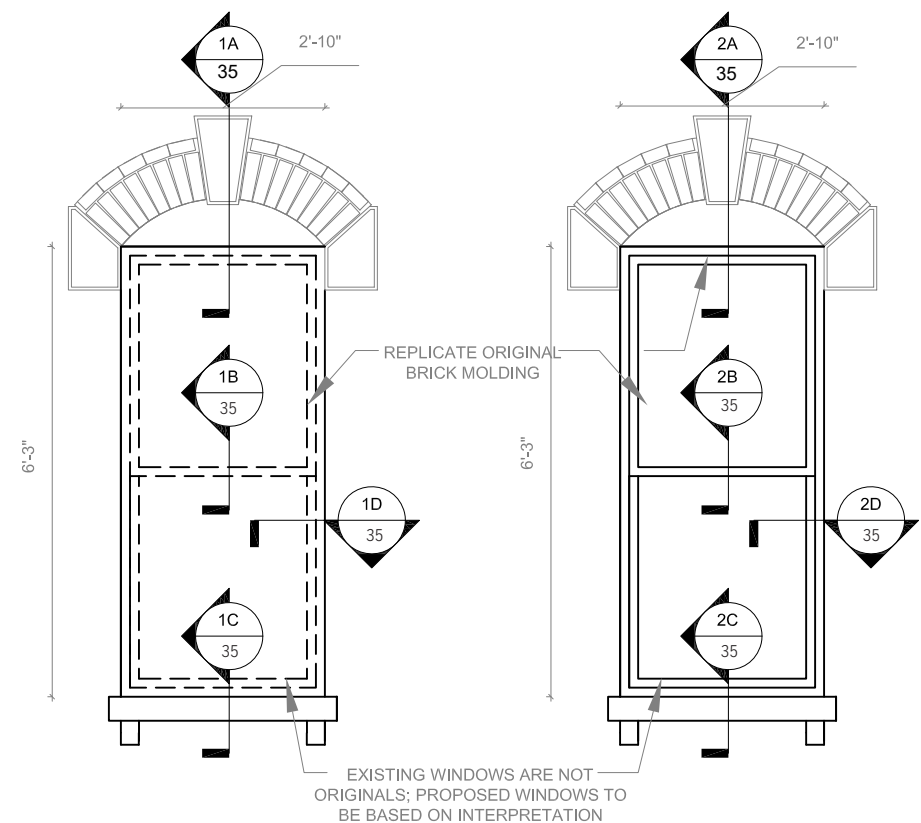
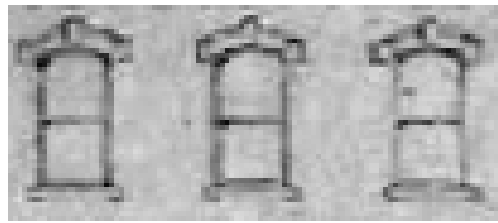
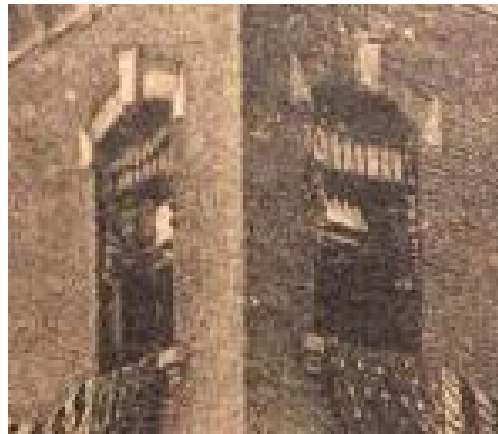
4 Proposed Strack Bldg Atlantic FL 1 Window W11
3/8" = 1'-0"



5 Ex'g Englehardt Bldg Atlantic FL 1 Window W12
3/8" = 1'-0"



6 Proposed Englehardt Bldg Atlantic FL 1 Window W12
3/8" = 1'-0"

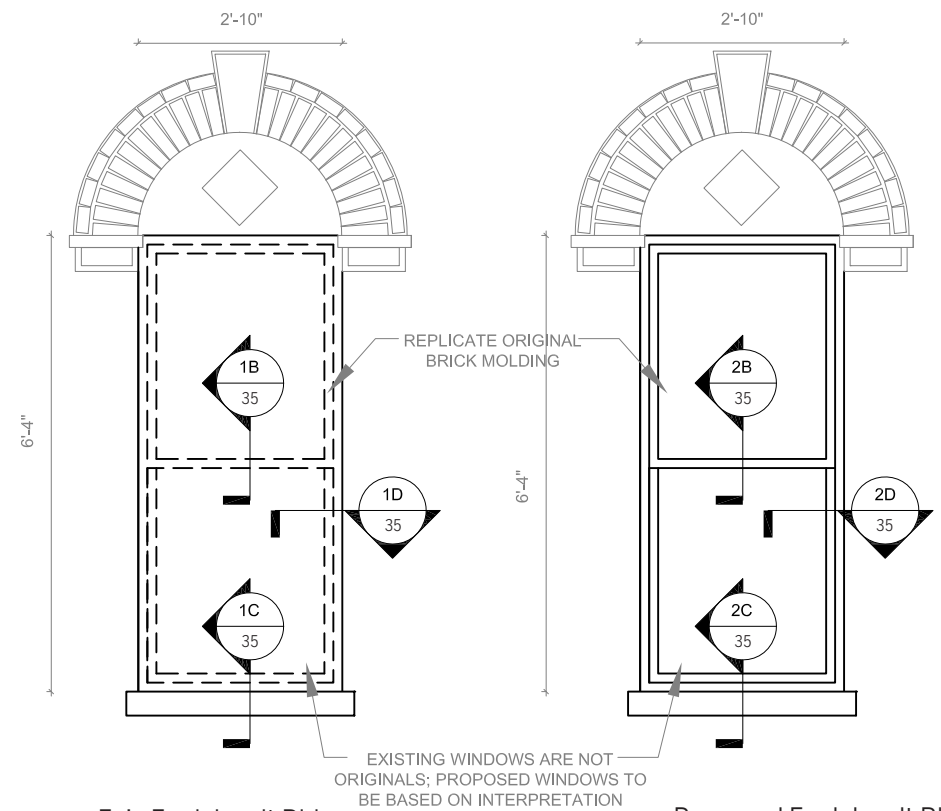
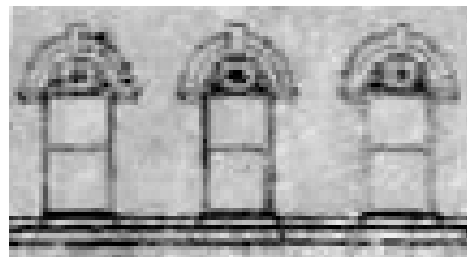
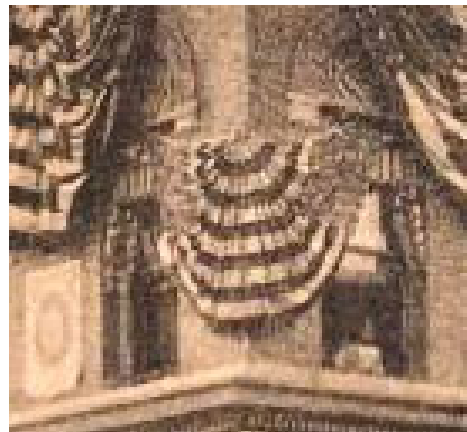


Ex'g Englehardt Bldg
FL 3 Window W4

1
3/8" = 1'-0"

Proposed Englehardt Bldg
FL 3 Window W4

2
3/8" = 1'-0"



Ex'g Englehardt Bldg
FL2 Window W3

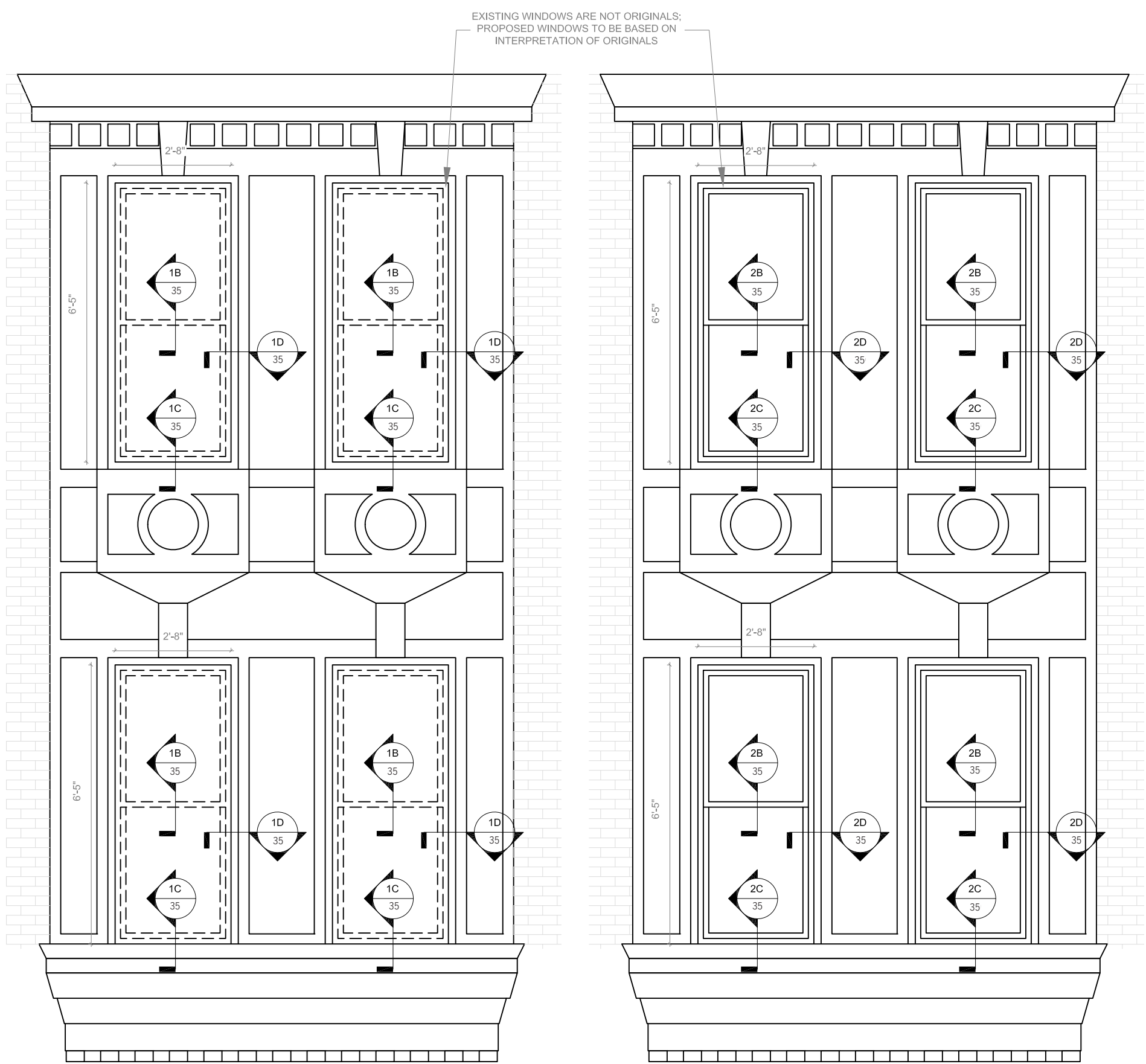
3
3/8" = 1'-0"

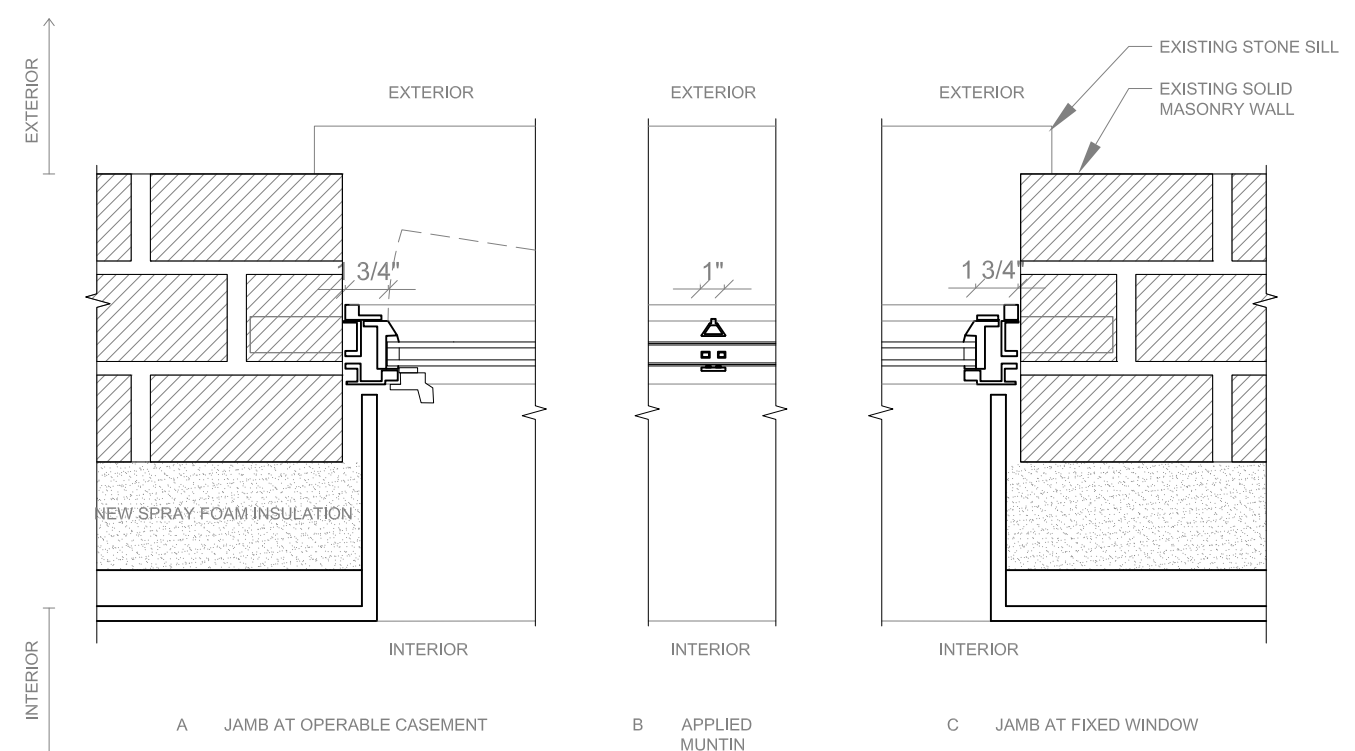
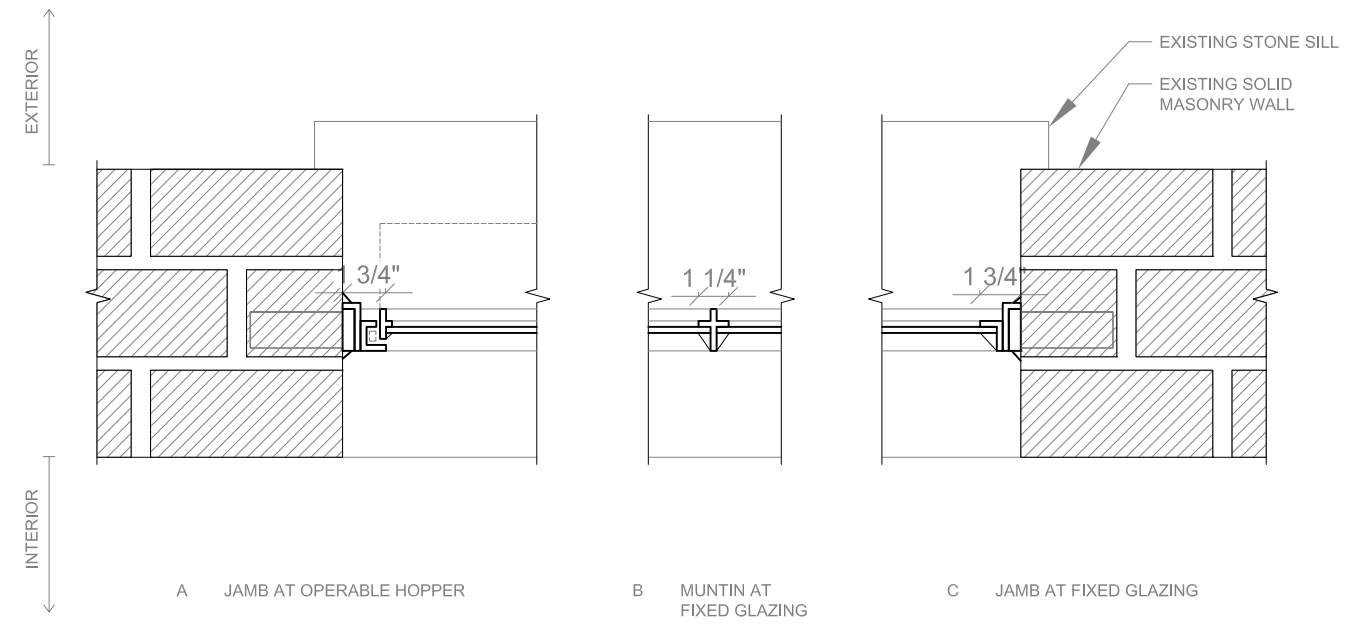
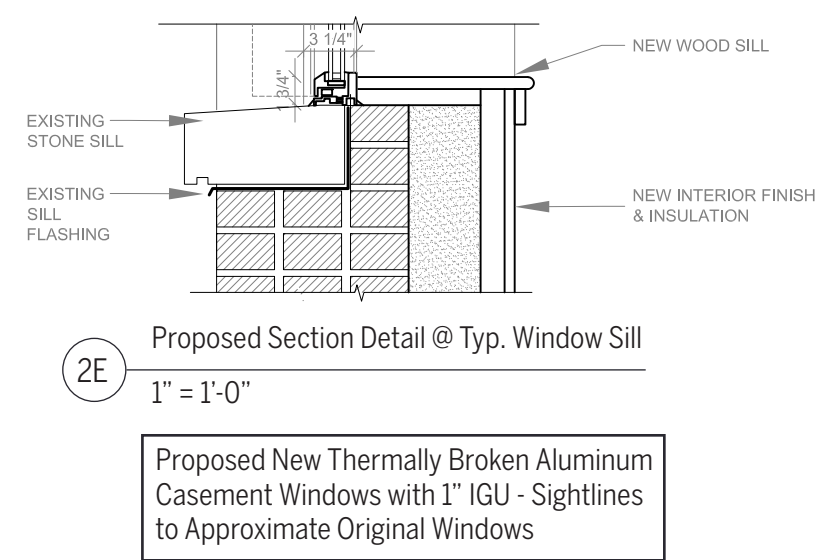
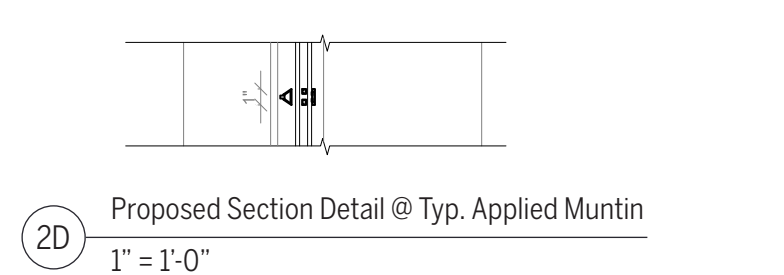
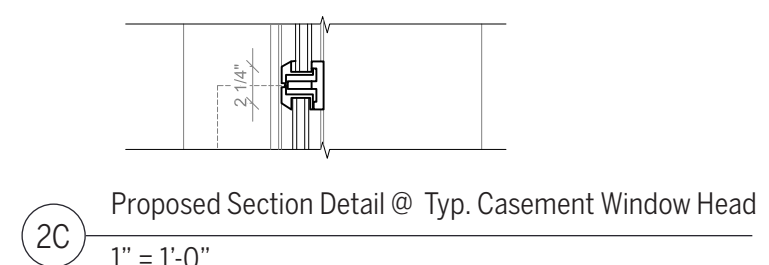
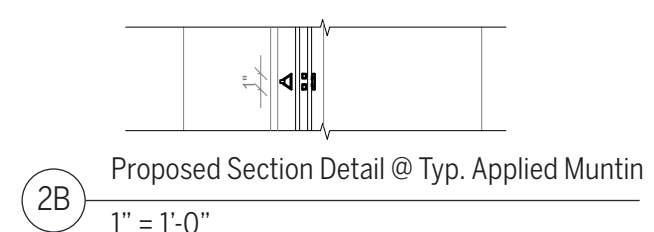
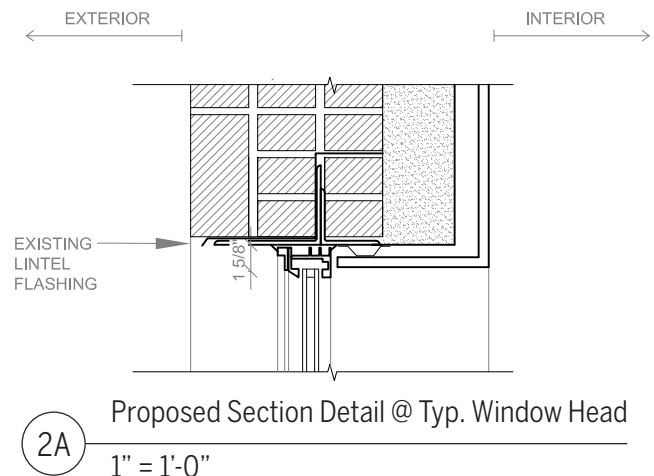
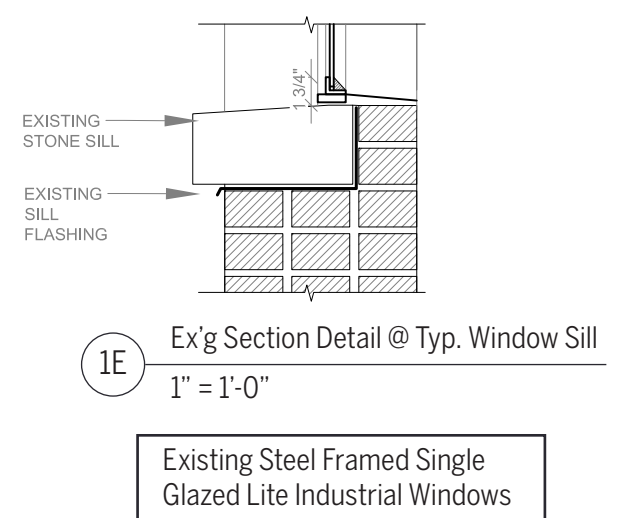
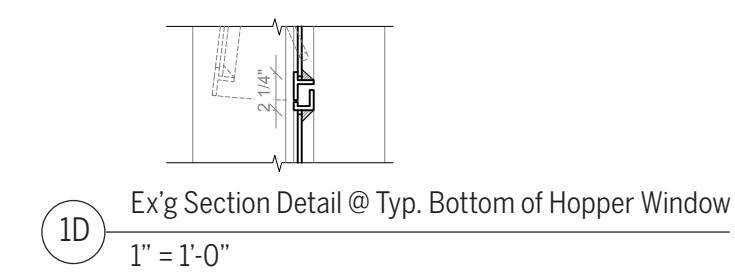
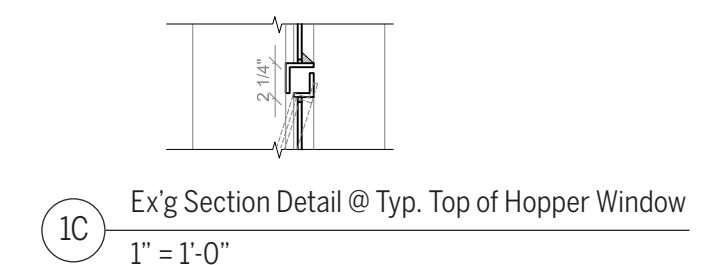
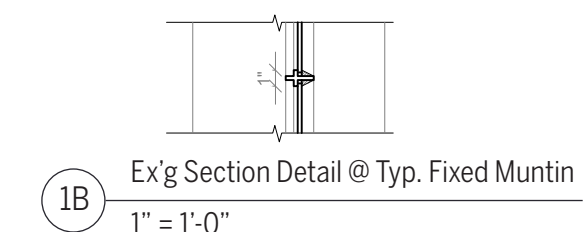
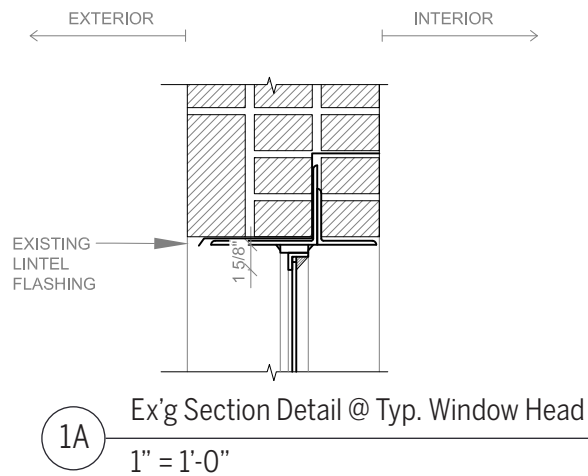
Proposed Englehardt Bldg
FL 2 Window W3

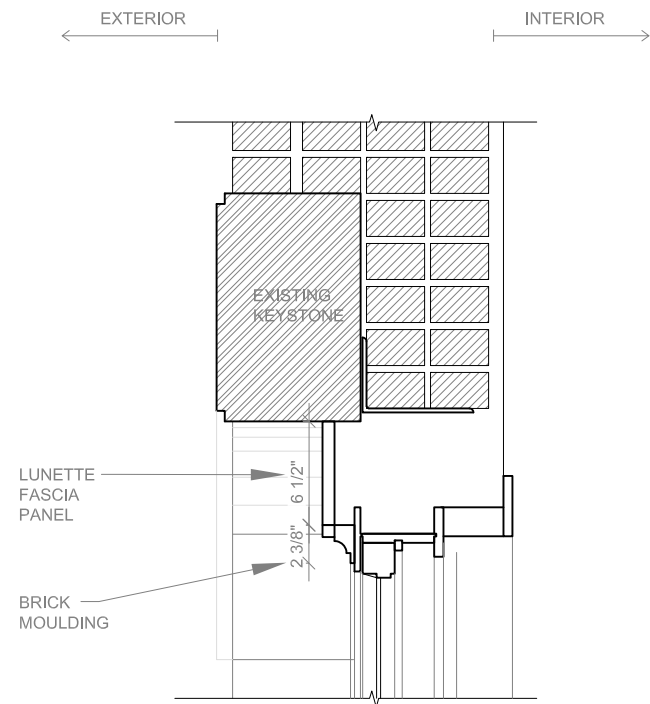
4
3/8" = 1'-0"

General Notes:

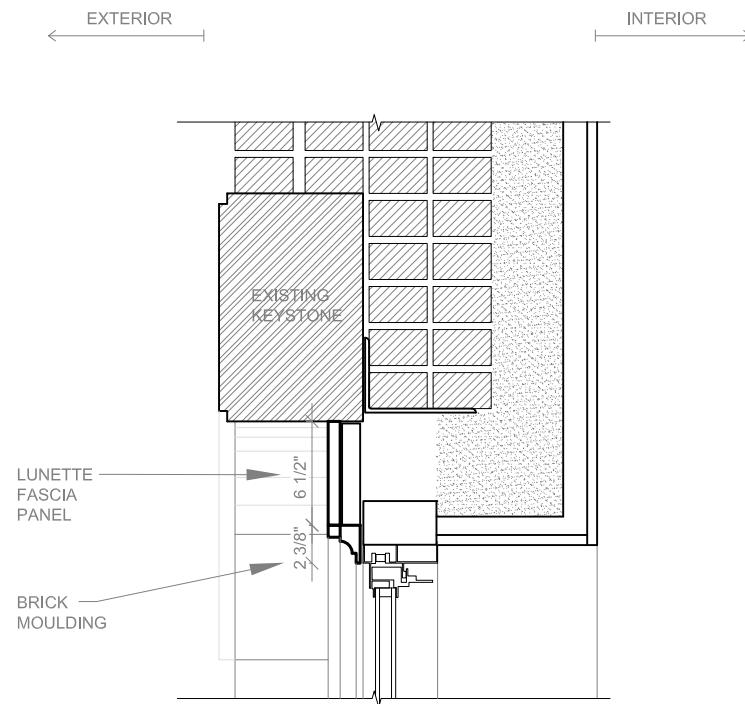
1. Overall dimensions shown are masonry rough openings. Existing rough opening to be maintained\unaltered unless specifically noted.
2. New replica windows to be thermally broken aluminum casement windows with 1" IGU - sightlines to approximate original windows
3. Window lites to be divided into panels of equal height and width.



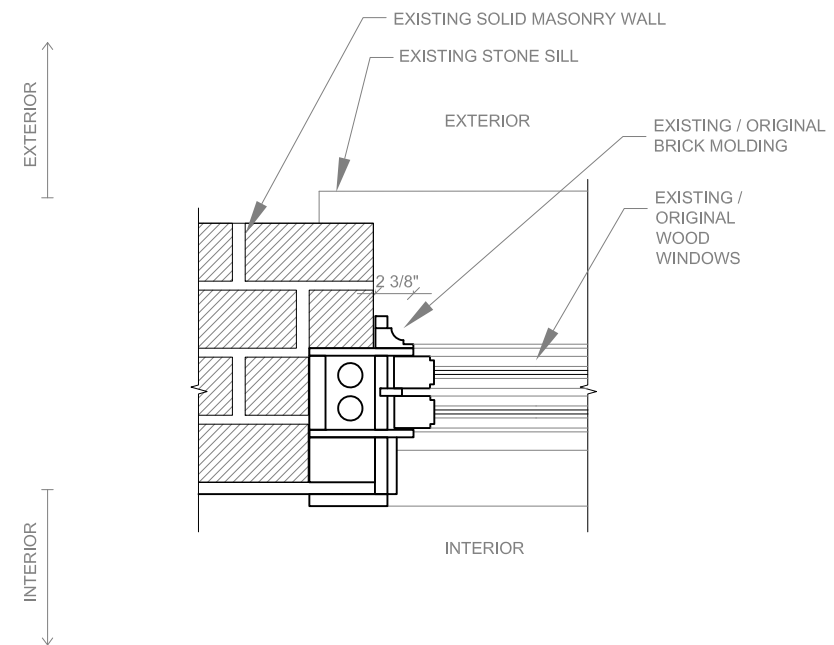




1A Ex'g Typ. Window Head
1" = 1'-0"

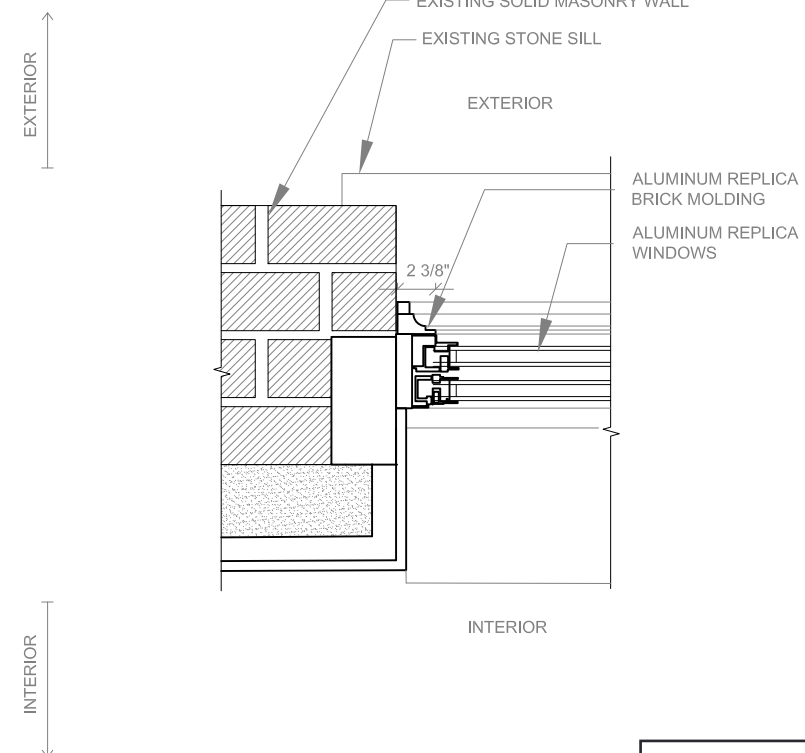


2A Proposed Typ. Window Head
1" = 1'-0"



1D Ex'g Window Plan Jamb Detail
1" = 1'-0"

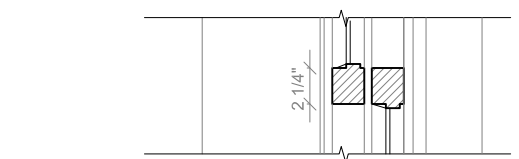
Existing / Original Wood Framed Double Hung Windows with Brick Molding



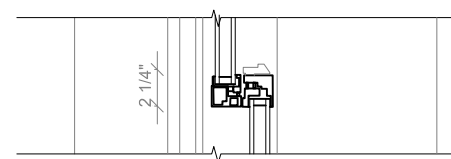
2D Proposed Window Plan Jamb Detail
1" = 1'-0"

Proposed new Thermally Broken Aluminum Double Hung Windows with 1" IGU - Sightlines and Brick Molding to Approximate Original Windows

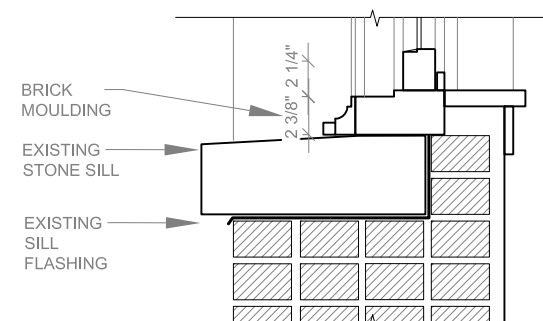
NOTE: PROPOSED WINDOW TYPE W4 DRAWN HERE.
OTHER ENGELHARDT RESIDENTIAL WINDOWS SIMILAR.



1B Ex'g Typ. Window Rail
1" = 1'-0"

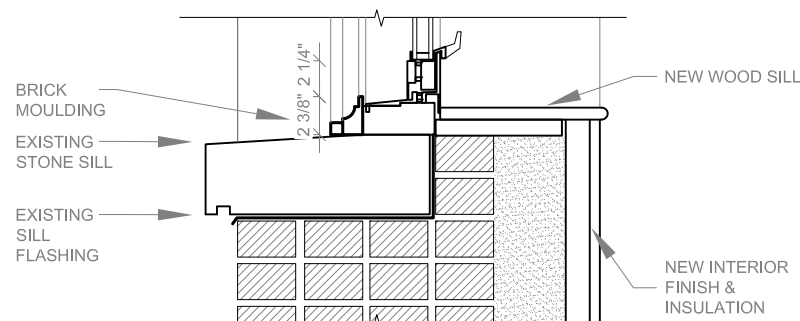


2B Proposed Typ. Window Rail
1" = 1'-0"



1C Ex'g Typ. Window Sill
1" = 1'-0"

Existing / Original Wood Framed Double Hung Windows with Brick Molding



2C Proposed Typ. Window Sill
1" = 1'-0"

Proposed new Thermally Broken Aluminum Double Hung Windows with 1" IGU - Sightlines and Brick Molding to Approximate Original Windows

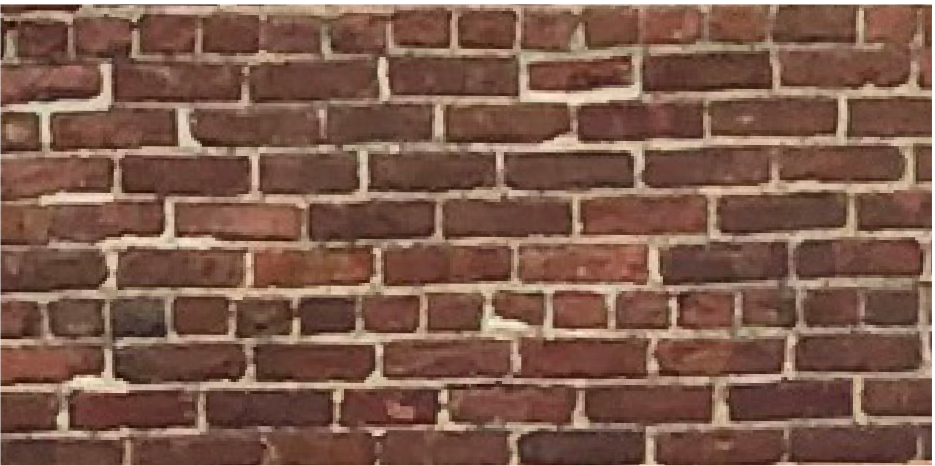
Landmarked Building - Existing Brick



Strack Building: Barbey Street & Atlantic Avenue
Existing ironspot brick and mortar. All replacement brick and mortar to match.



Englehardt Building: Atlantic Avenue & Schenck Avenue
Existing brick and mortar. All replacement brick and mortar to match.

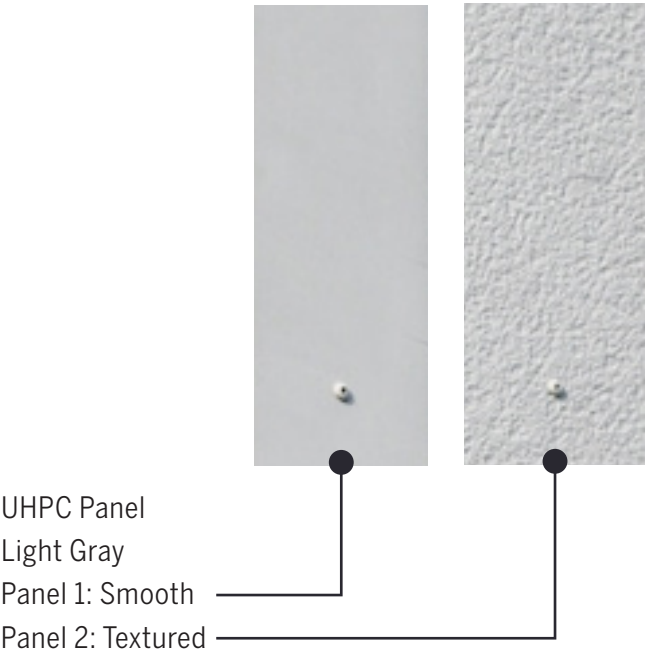


Strack Building: South Facade
Existing brick and mortar. All replacement brick and mortar to match.

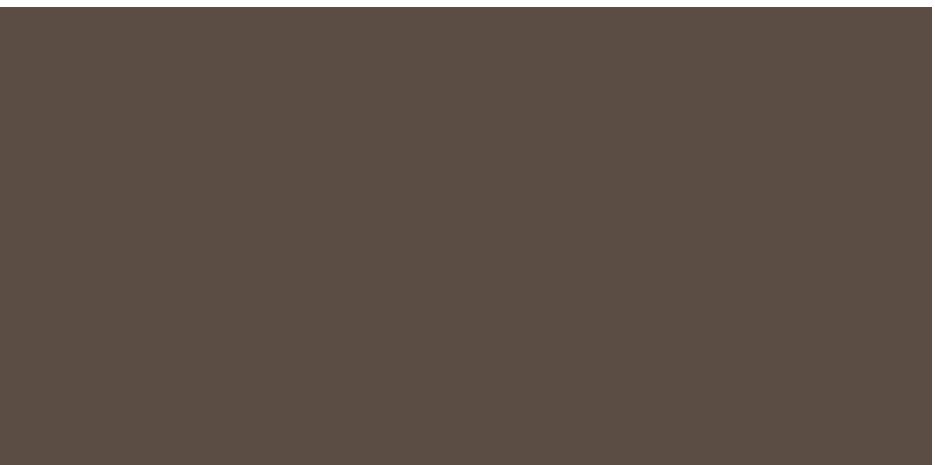
New Building - Proposed Materials



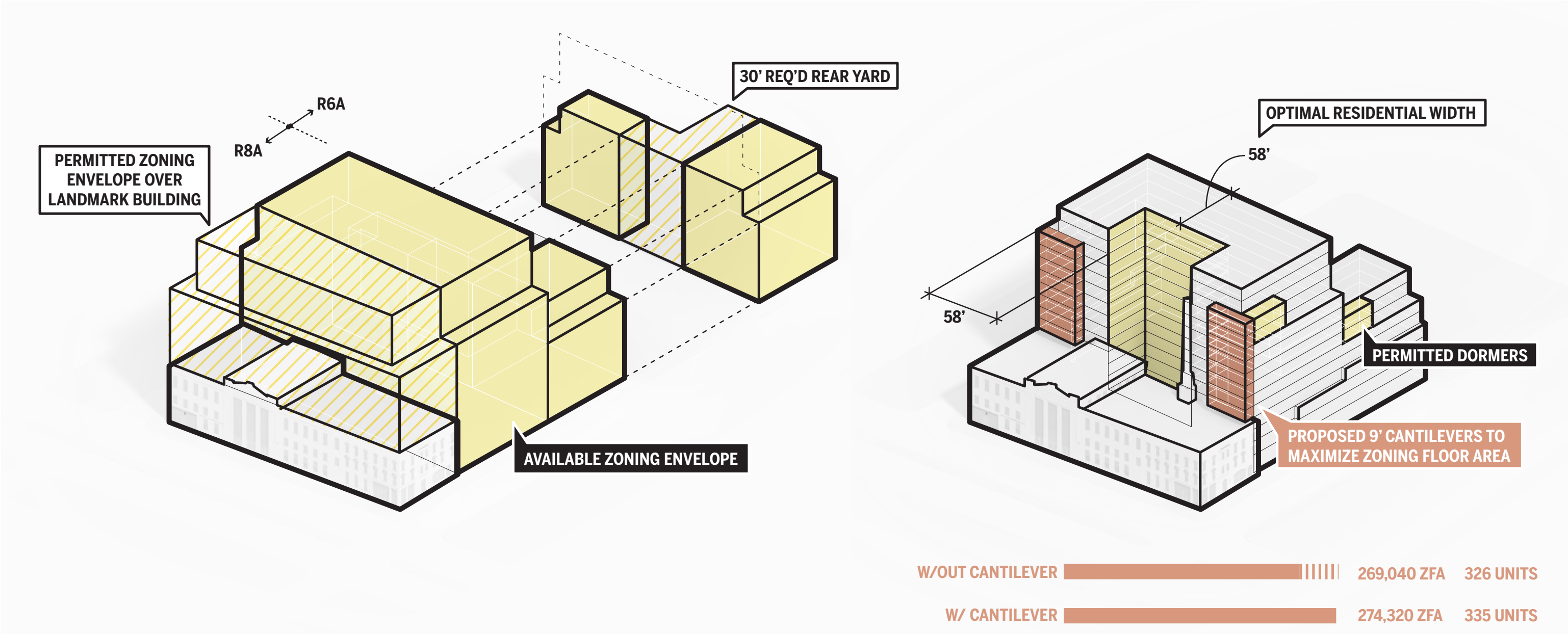
New Building Brick Cavity Wall
Hebron Brandywine



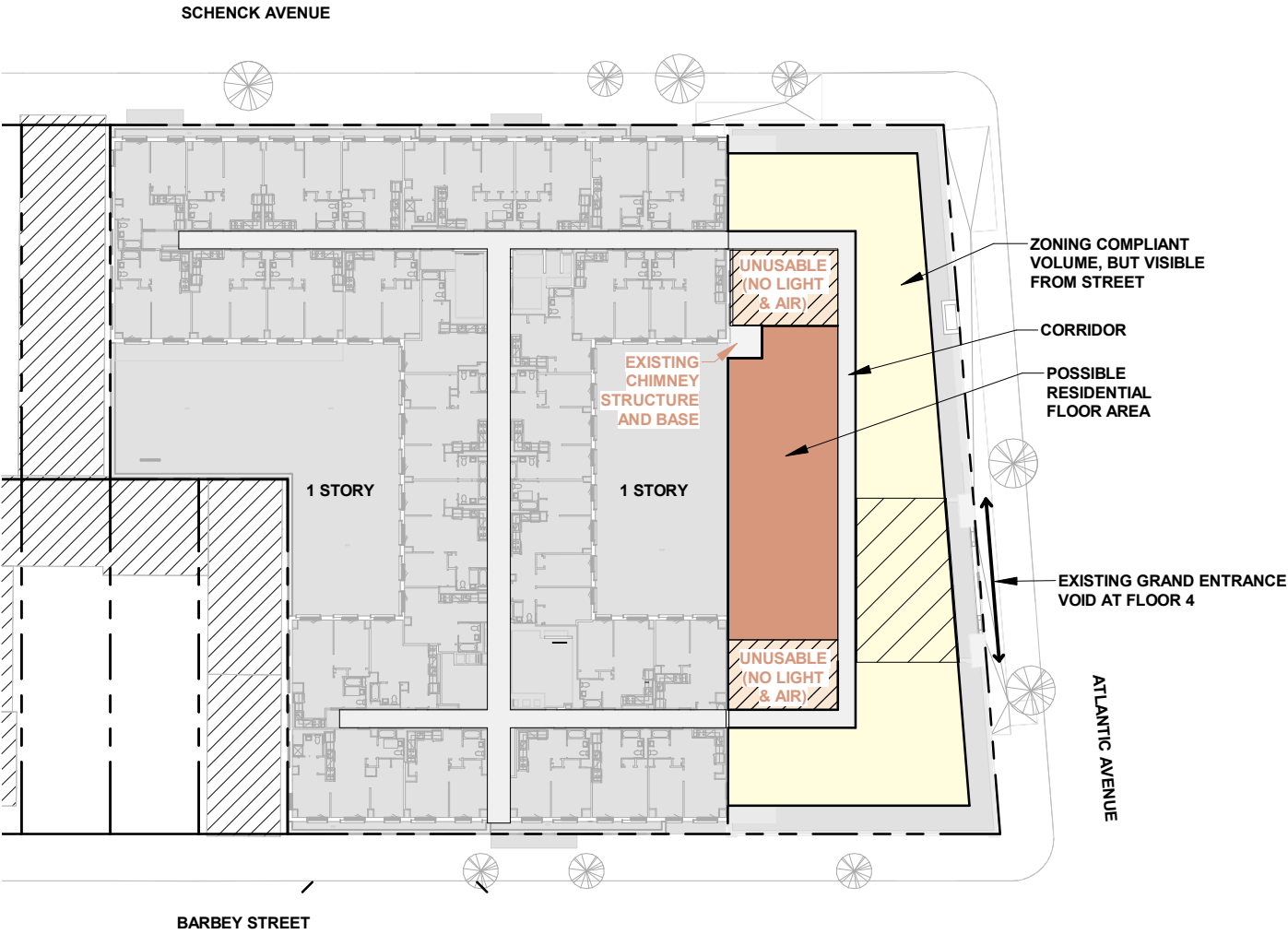
UHPC Panel
Light Gray
Panel 1: Smooth
Panel 2: Textured



Aluminum Frame Color at Windows, Storefront & Aluminum Slab Cover
PPG Color: Sarsaparilla PPG1018-7



ZONING PLAN DIAGRAM SHOWING OVERBUILD OPTION



ZONING ELEVATION DIAGRAM ALONG SCHENCK AVE SHOWING OVERBUILD OPTION

