

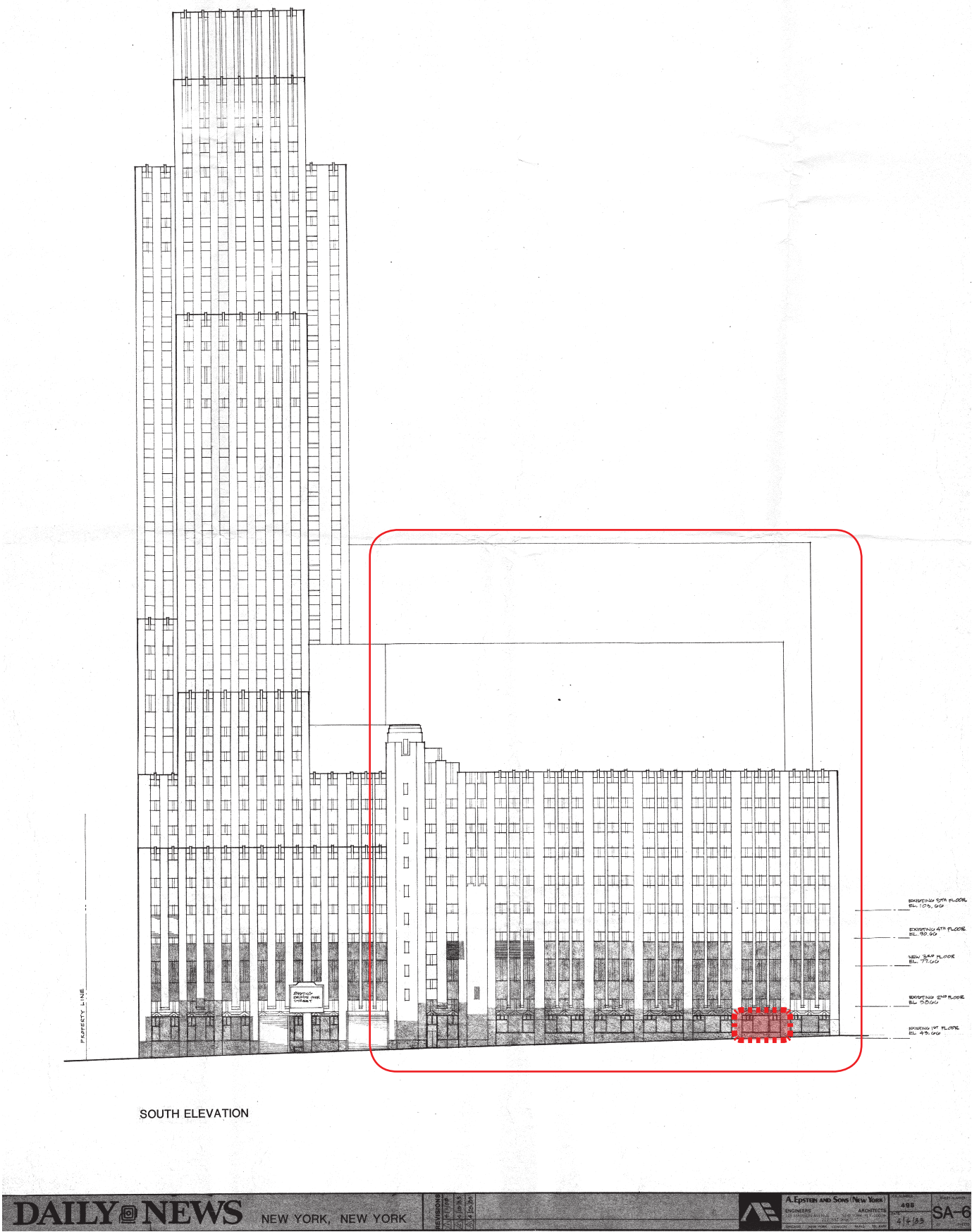
220 E 42nd Street (Daily News Building) #104

Public Hearing Presentation - Landmarks Preservation Commission Docket #LPC-19-30815

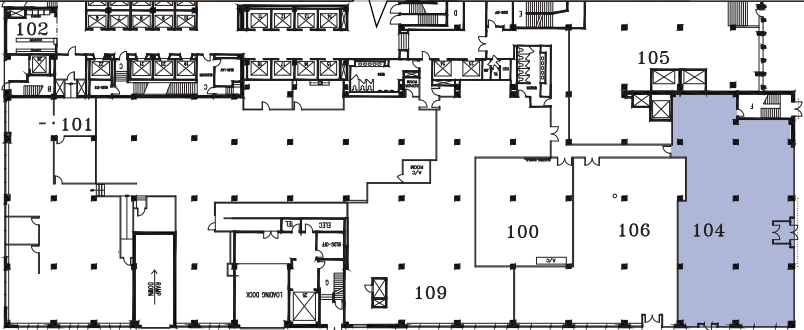
The Daily News Building : 220 E42nd Street : Landmark Designated Building LP-1049



The Daily News Building : Existing South Elevation



41st Street Elevation : Proposed Barrier-Free Accessible Ramp in Context of Entire Daily News Building

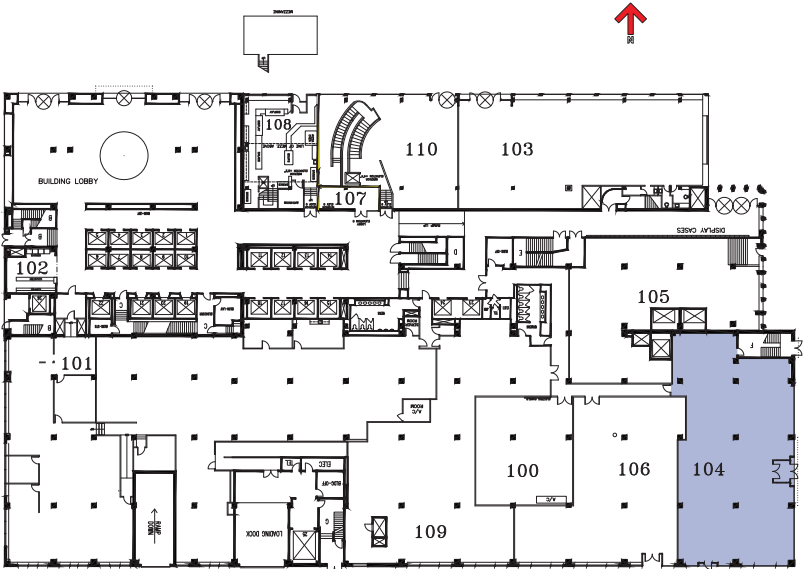


Plan of Daily News Building, Ground Floor

41st Street Elevation : Existing Condition



Existing 41st Street entrance showing slope of sidewalk and approximately 7” single step into the space.



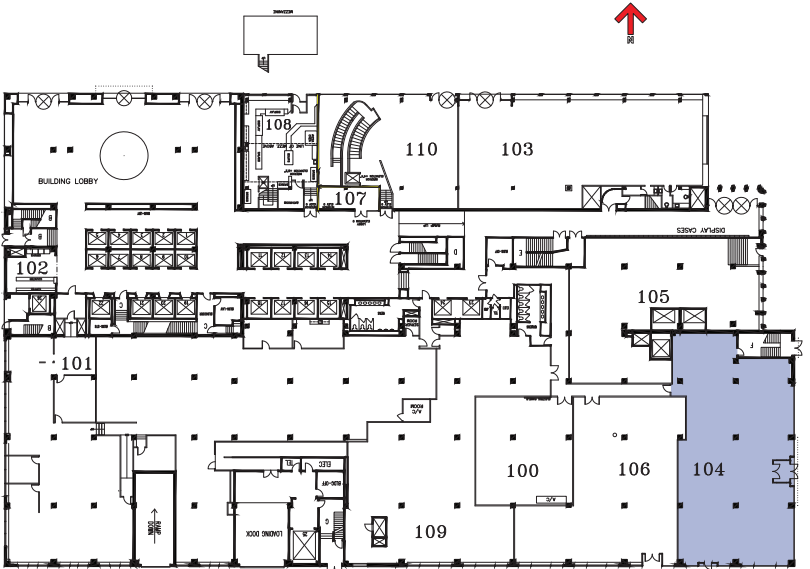
Plan of Daily News Building, Ground Floor

41st Street Elevation : Proposed Barrier-Free Accessible Ramp



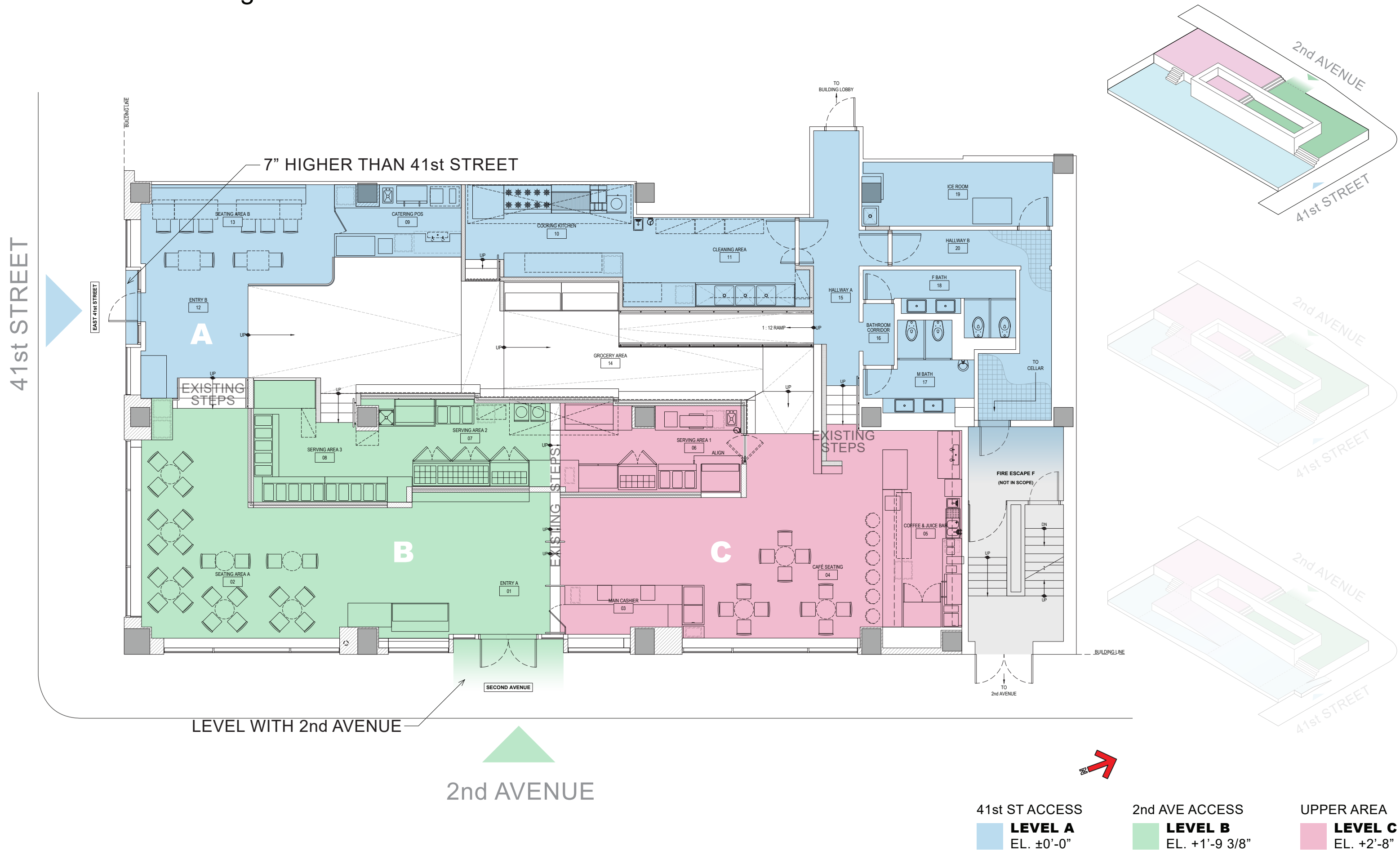
Photomontage of proposed ramp at existing 41st Street entrance to provide barrier free access throughout interior space

Ramp direction towards natural slope of sidewalk to minimise ramp run

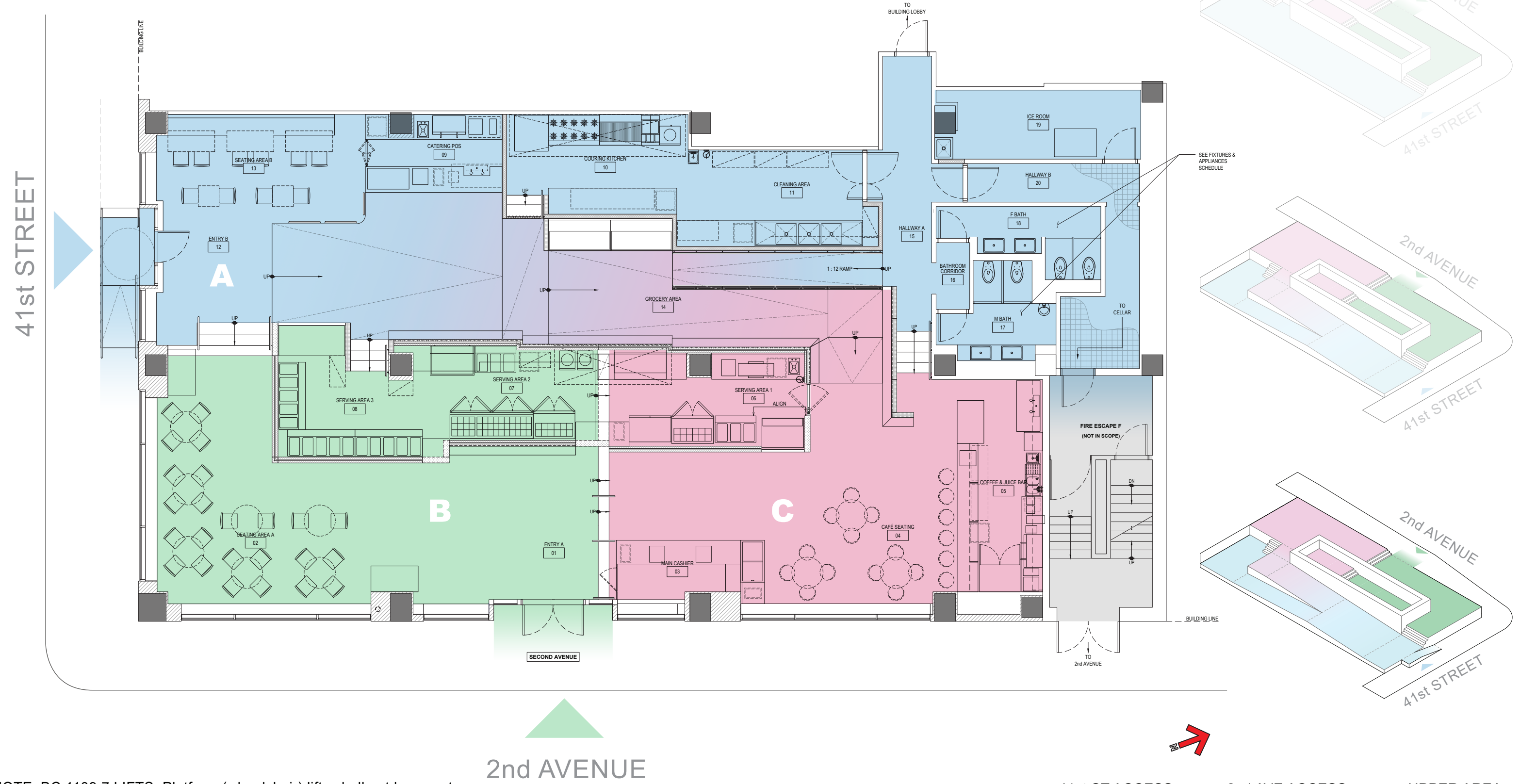


Plan of Daily News Building, Ground Floor

Floor Plan : Existing Level Differences



Floor Plan : Proposed Connection 2 : Exterior Connection of Levels A & B



NOTE: BC 1109.7 LIFTS. Platform (wheelchair) lifts shall not be a part of a required accessible route in new construction except as indicated.

41st ST ACCESS

LEVEL A
EL. ±0'-0"

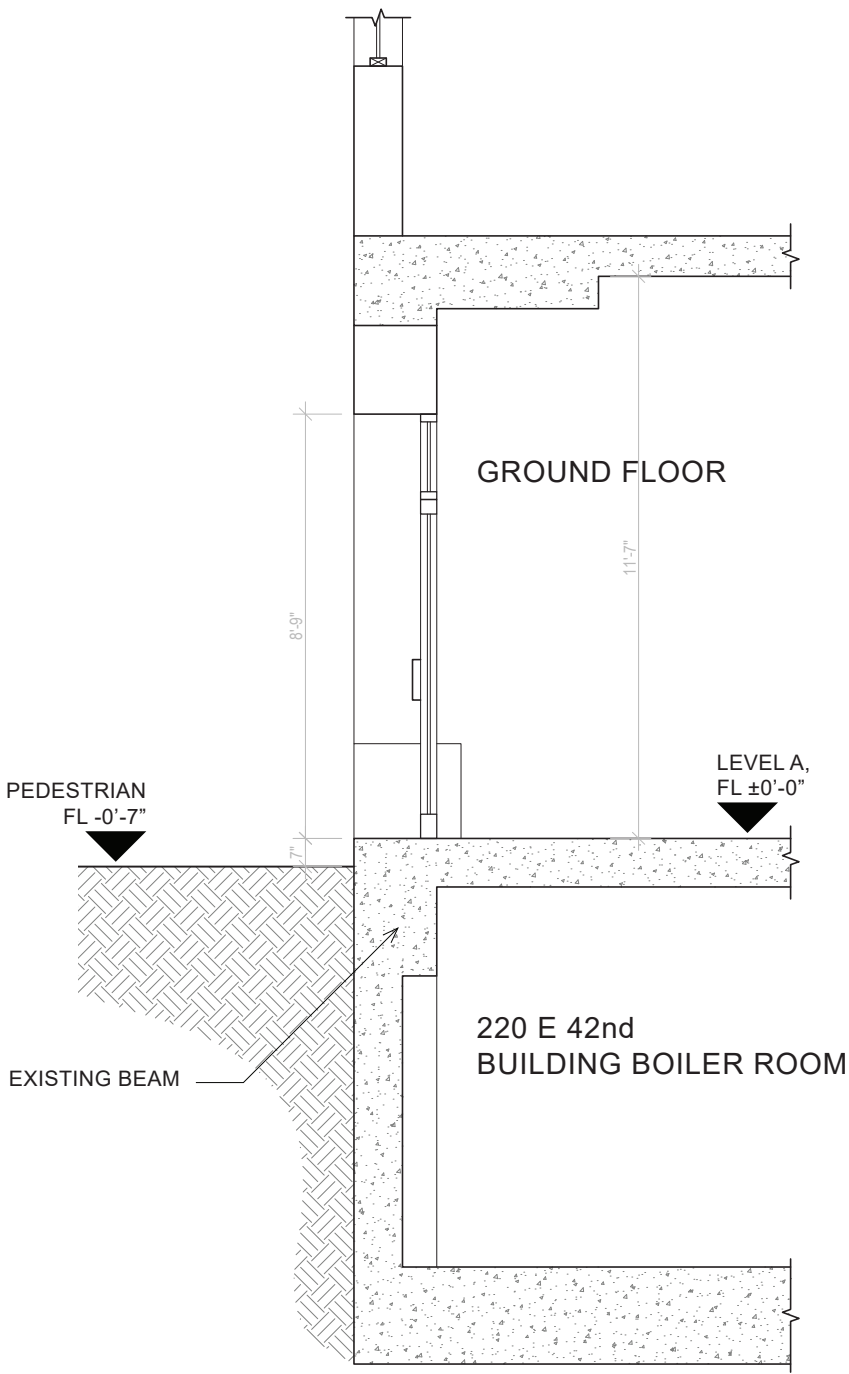
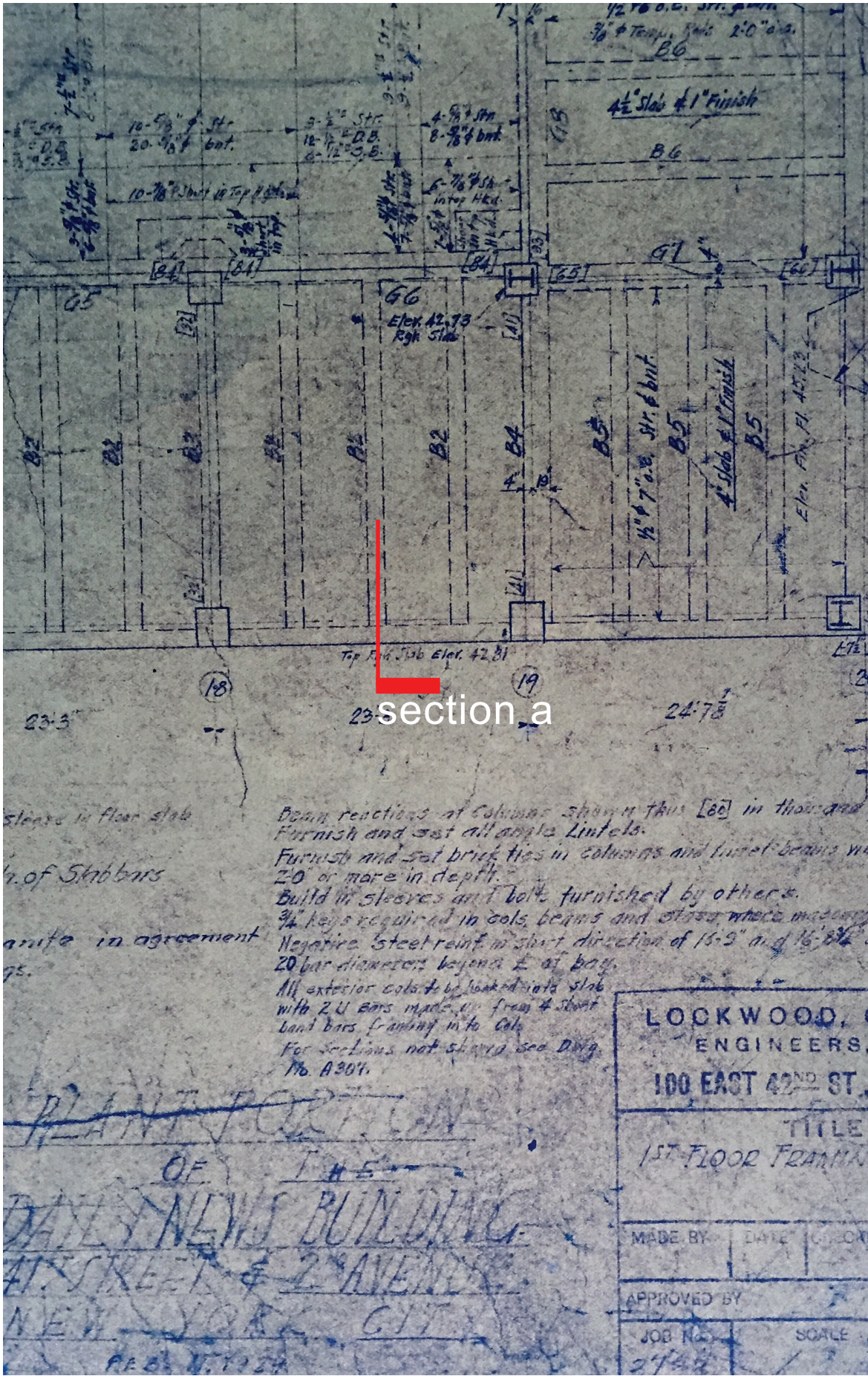
2nd AVE ACCESS

LEVEL B
EL. +1'-9 3/8"

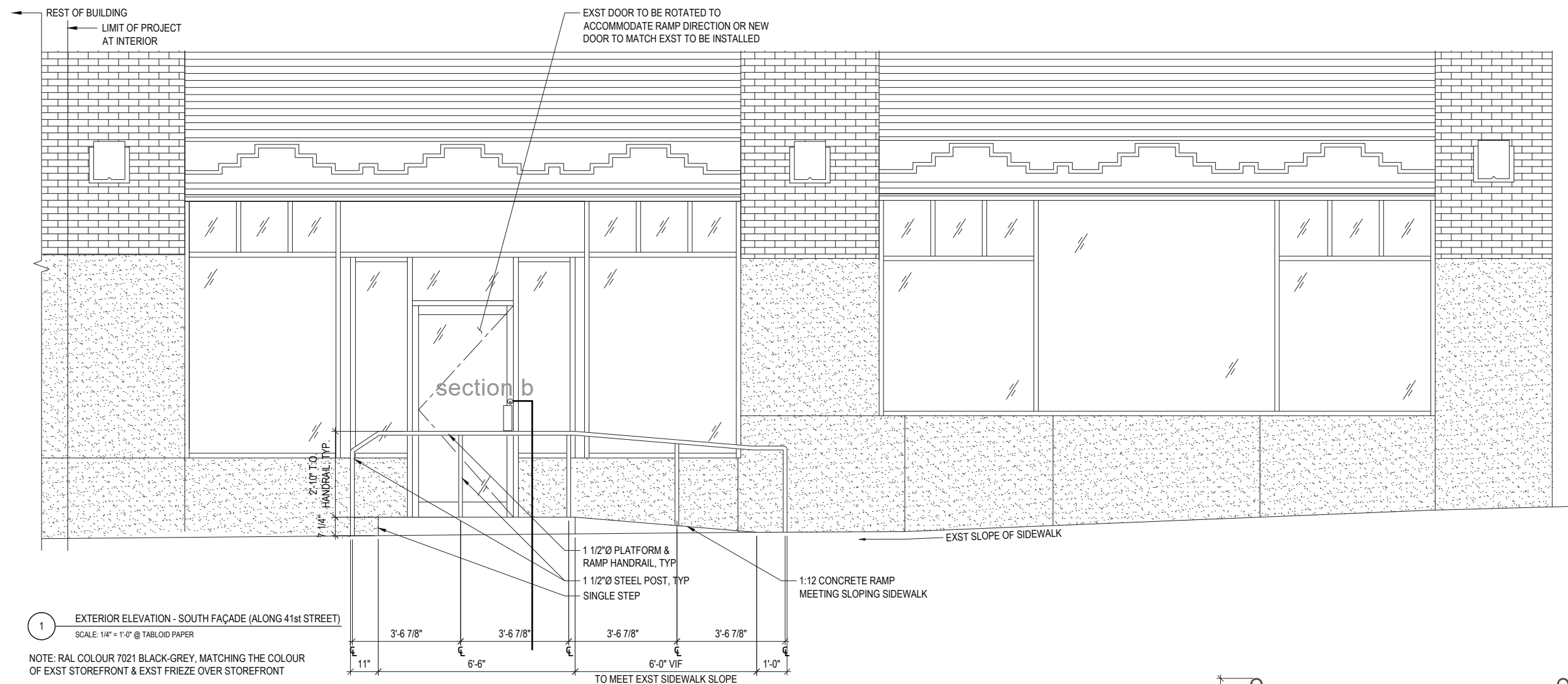
UPPER AREA

LEVEL C
EL. +2'-8"

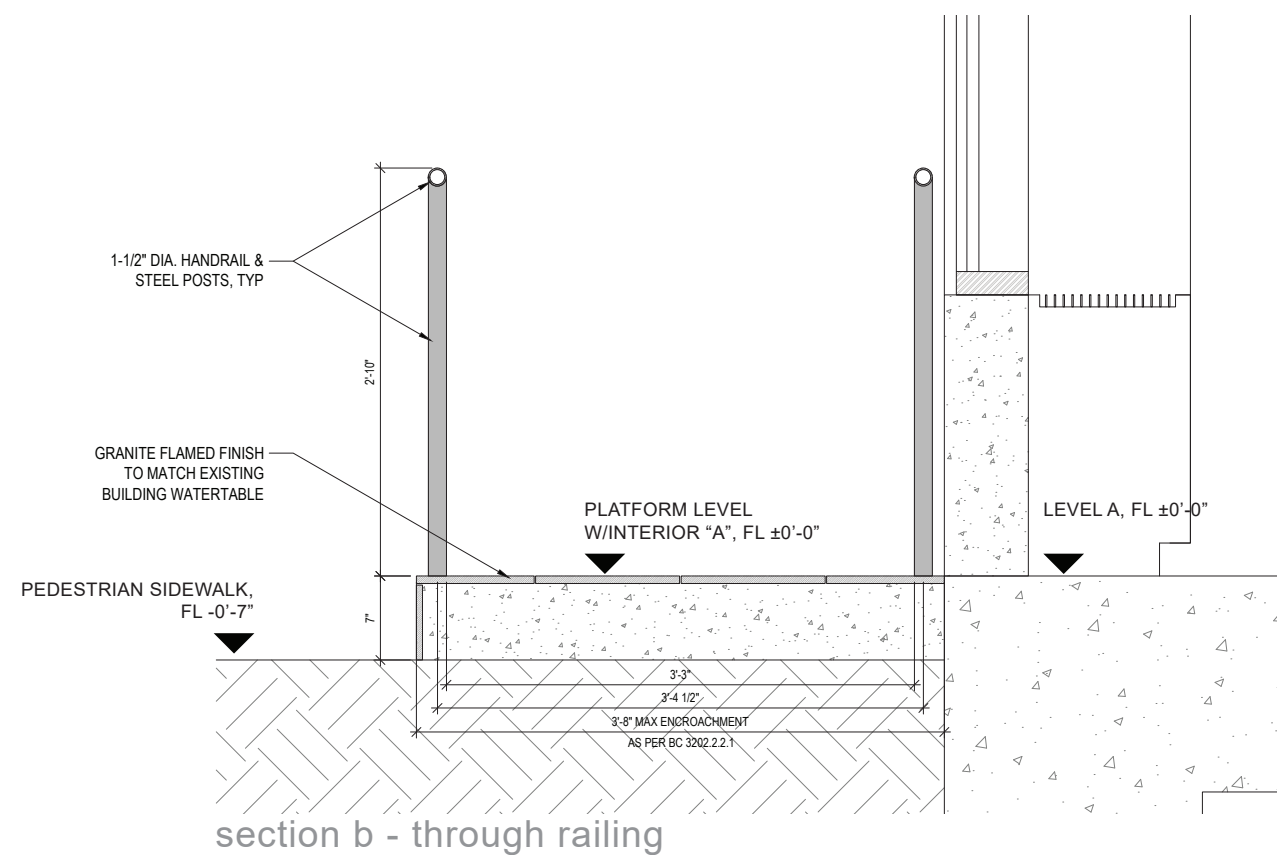
Section Detail : Existing Plan & Section Through 41st Street Entrance



Elevation : Proposed Connection 2 : Exterior Elevation Along 41st Street



Exterior elevation of 41st Street entrance showing proposed ramp with railing



41st Street Elevation : Material Indication

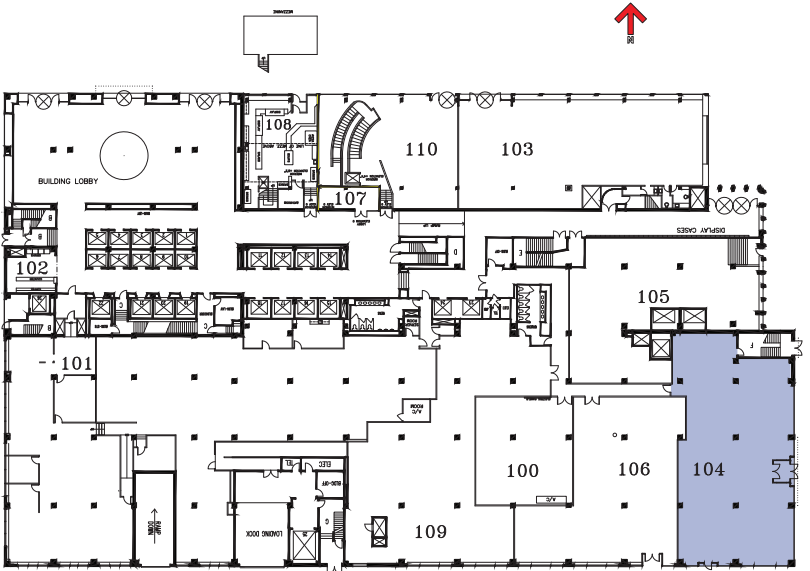


Minimum Ø1.5" black railing
matching existing storefront

Granite Flamed Finish to
match existing watertable



Ramp to be blended with
sidewalk



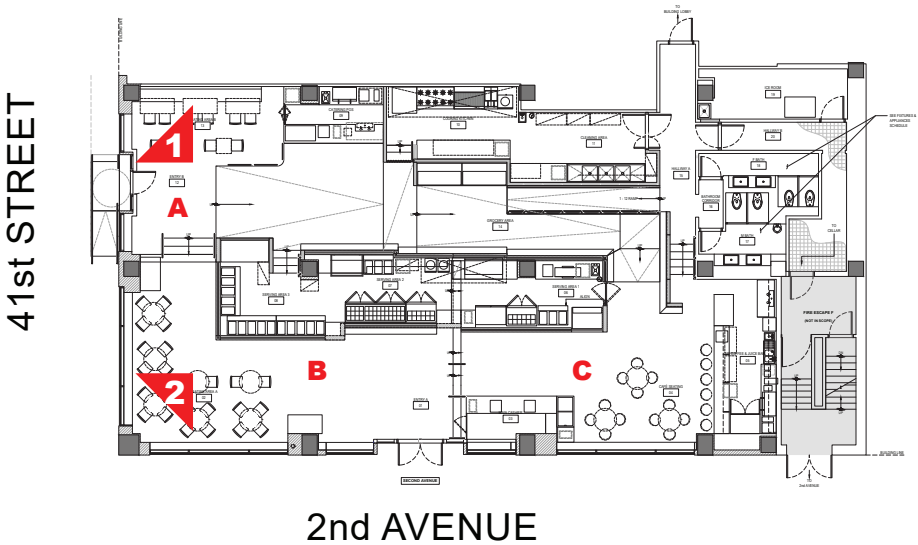
Plan of Daily News Building, Ground Floor

Interior Photographs



1 - View of interior ramp connecting level A to C

2 - View from currently un-connected level B, accessible only from 2nd Avenue Entrance



Thank you.



260 W 35th Street #303

New York NY, 10001

T. 212.574.8009

F. 212.574.8003

info@architecturework.com

www.architecturework.com

© 2017 Architecture Work Office PLLC. All rights reserved.

This material prepared by Architecture Work Office PLLC may not be reproduced, displayed, modified or distributed without the express prior written permission. For permission, please contact info@architecturework.com.