

7 Verona Place, Brooklyn Bedford Historic District

- Proposed removal of portion of non-visible sloped roof at front of building
- Proposed modifications to front areaway at basement level entrance.







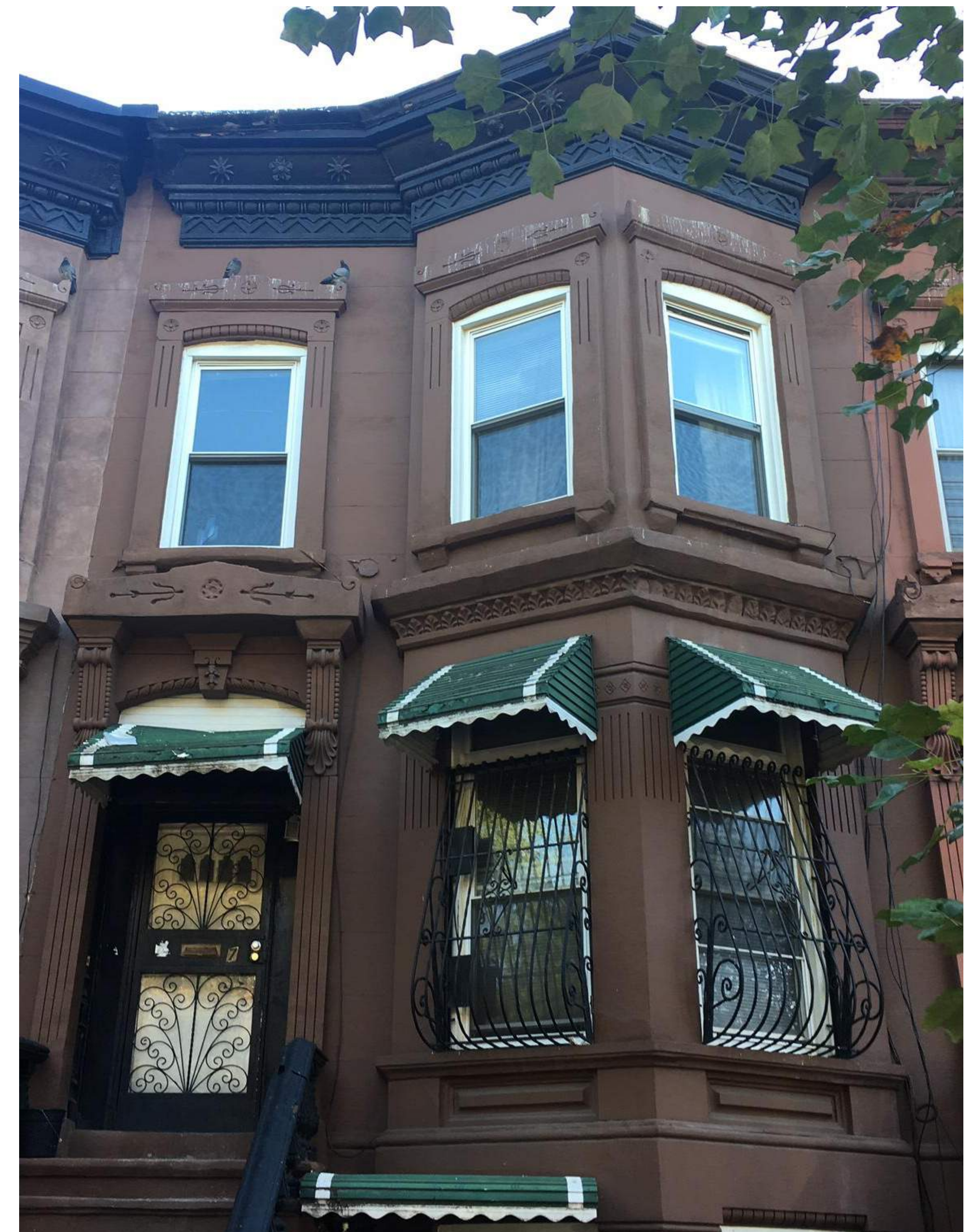
Block Plan - Bedford Historic District Detail



Aerial View - Looking east



View of existing front facade



View of cornice

7 Verona Place



View looking south from across Verona Place

7 Verona Place



View looking north from across Verona Place

7 Verona Place

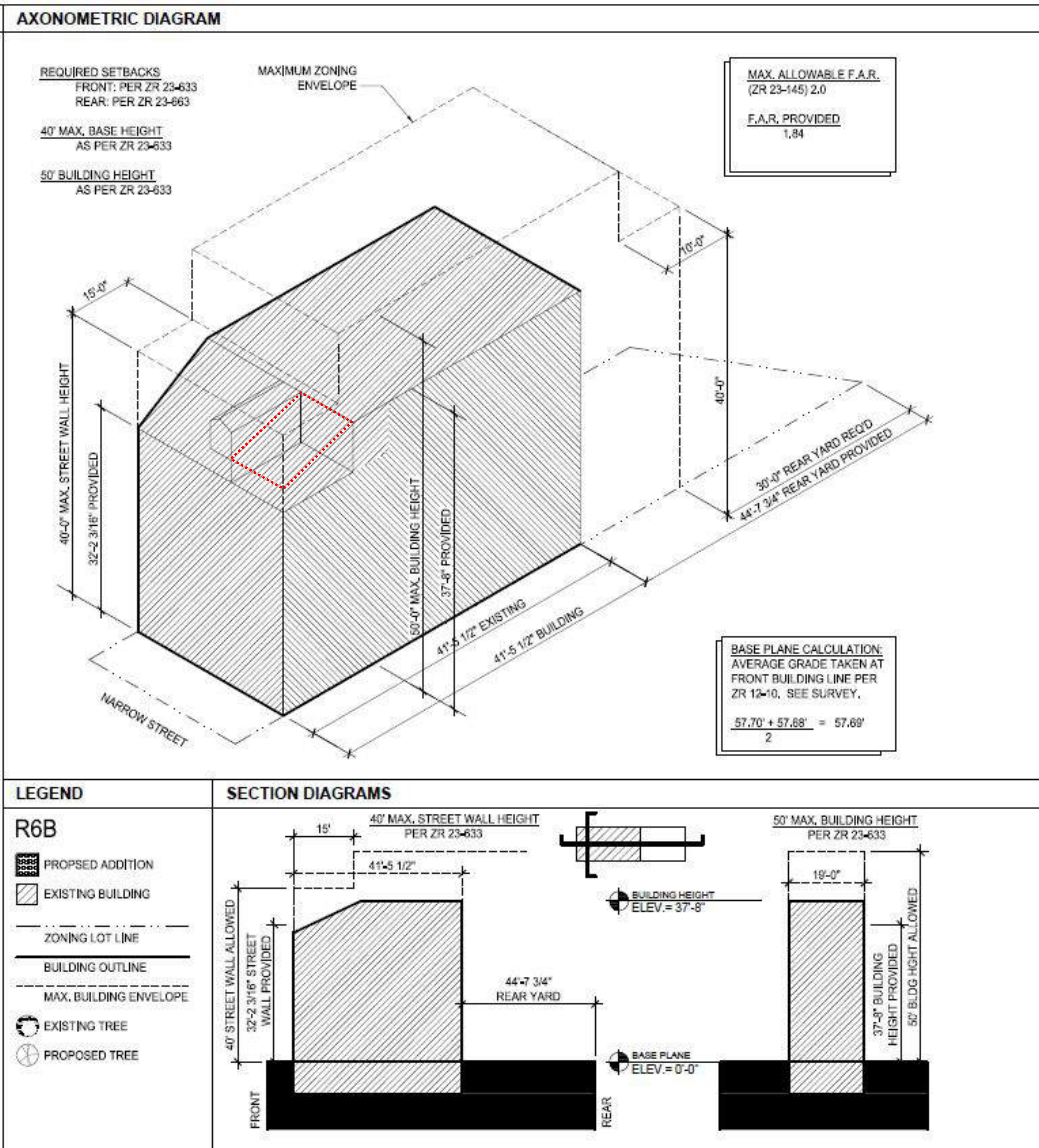


View of front facade from center of Verona Place

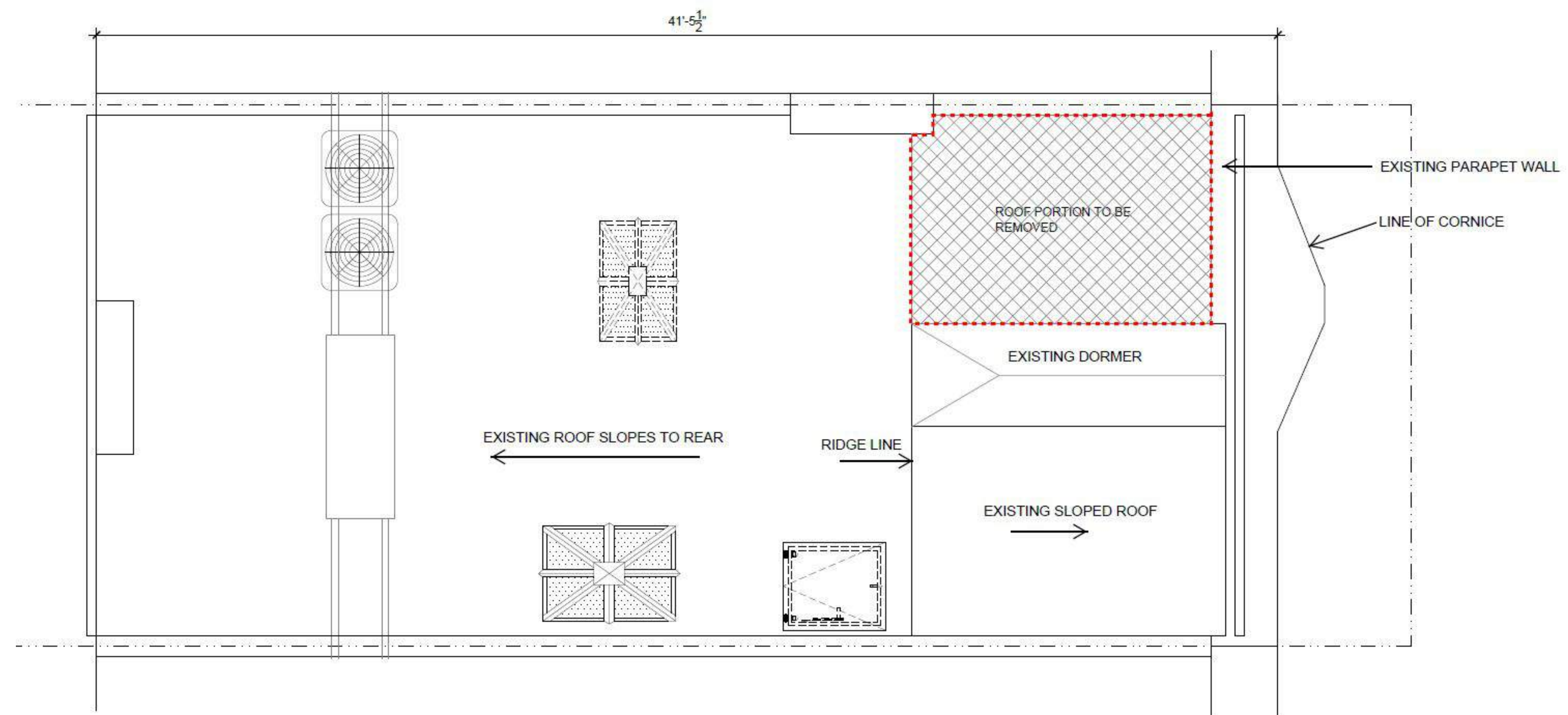
7 Verona Place



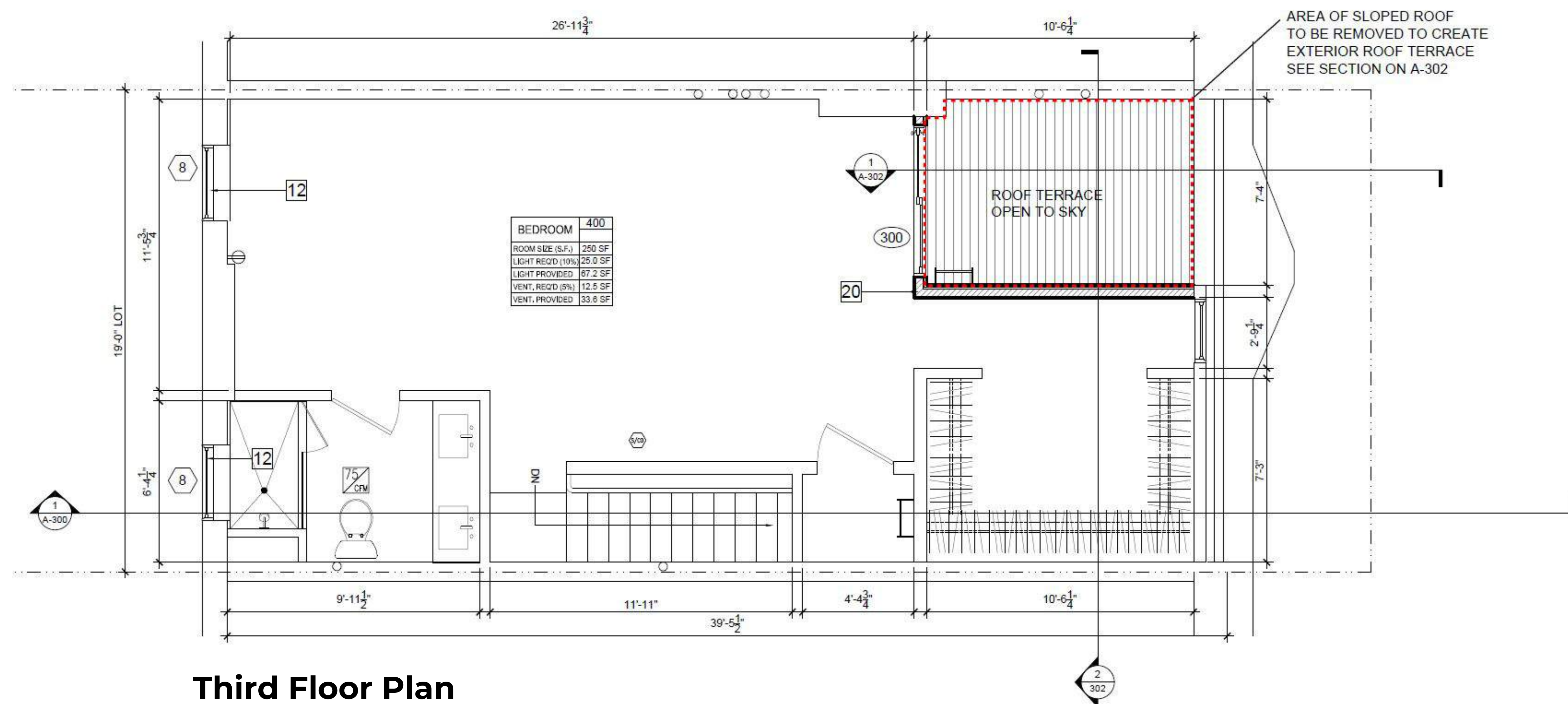
View of front facade from center of Verona Place



Zoning Diagrams



Roof Plan



Third Floor Plan

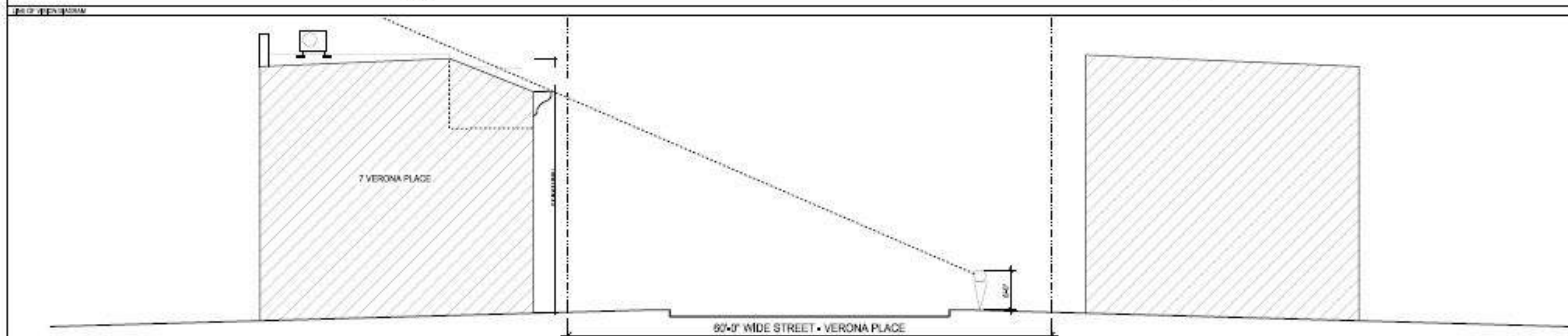
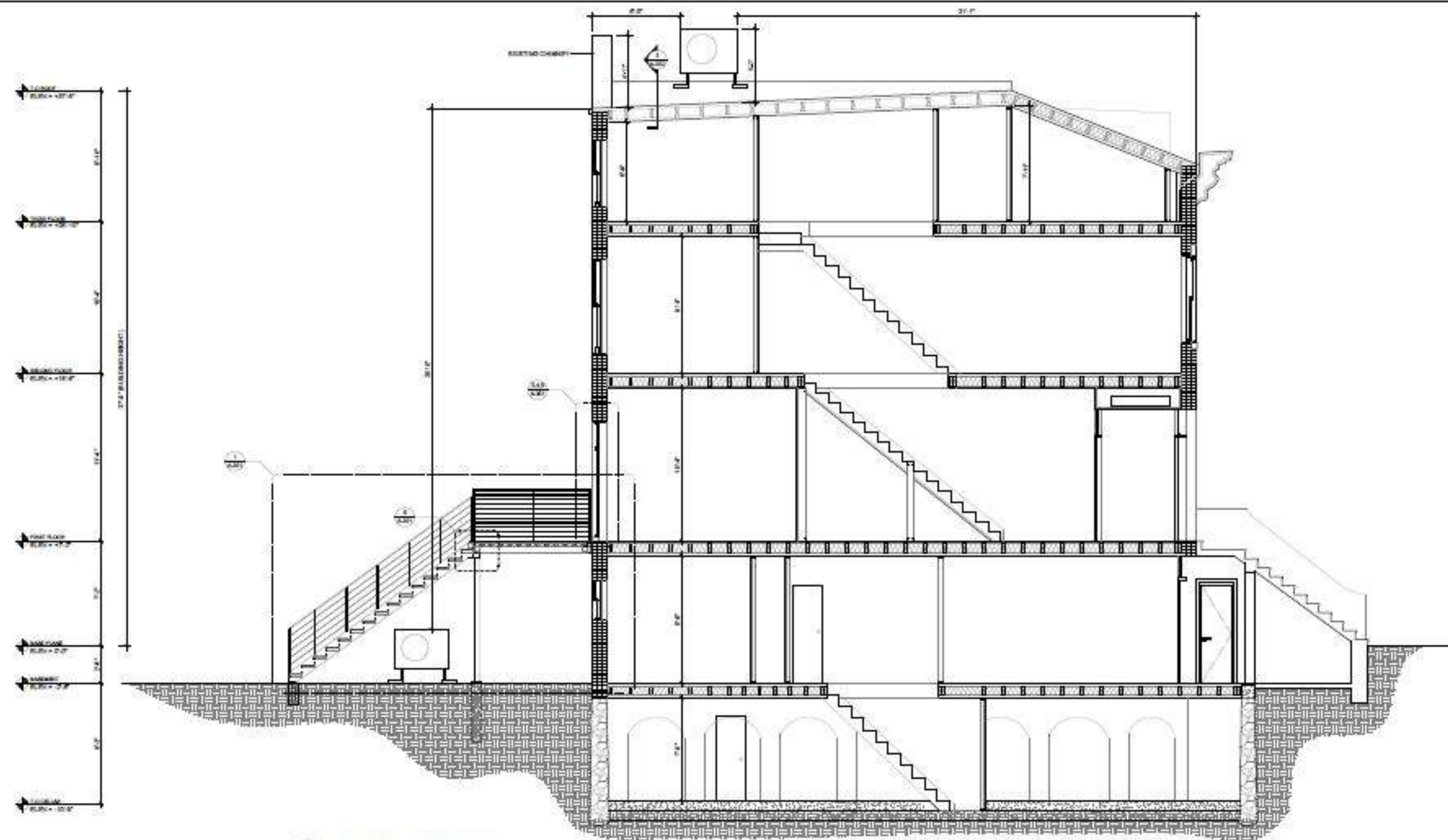


Existing Front Elevation

EXTERIOR WORK TO TAKE PLACE ONLY WHEN THE EXTERIOR TEMPERATURE REMAINS A CONSTANT 48 DEGREES OR ABOVE FOR A 72-HOUR PERIOD FROM THE COMMENCEMENT OF WORK.



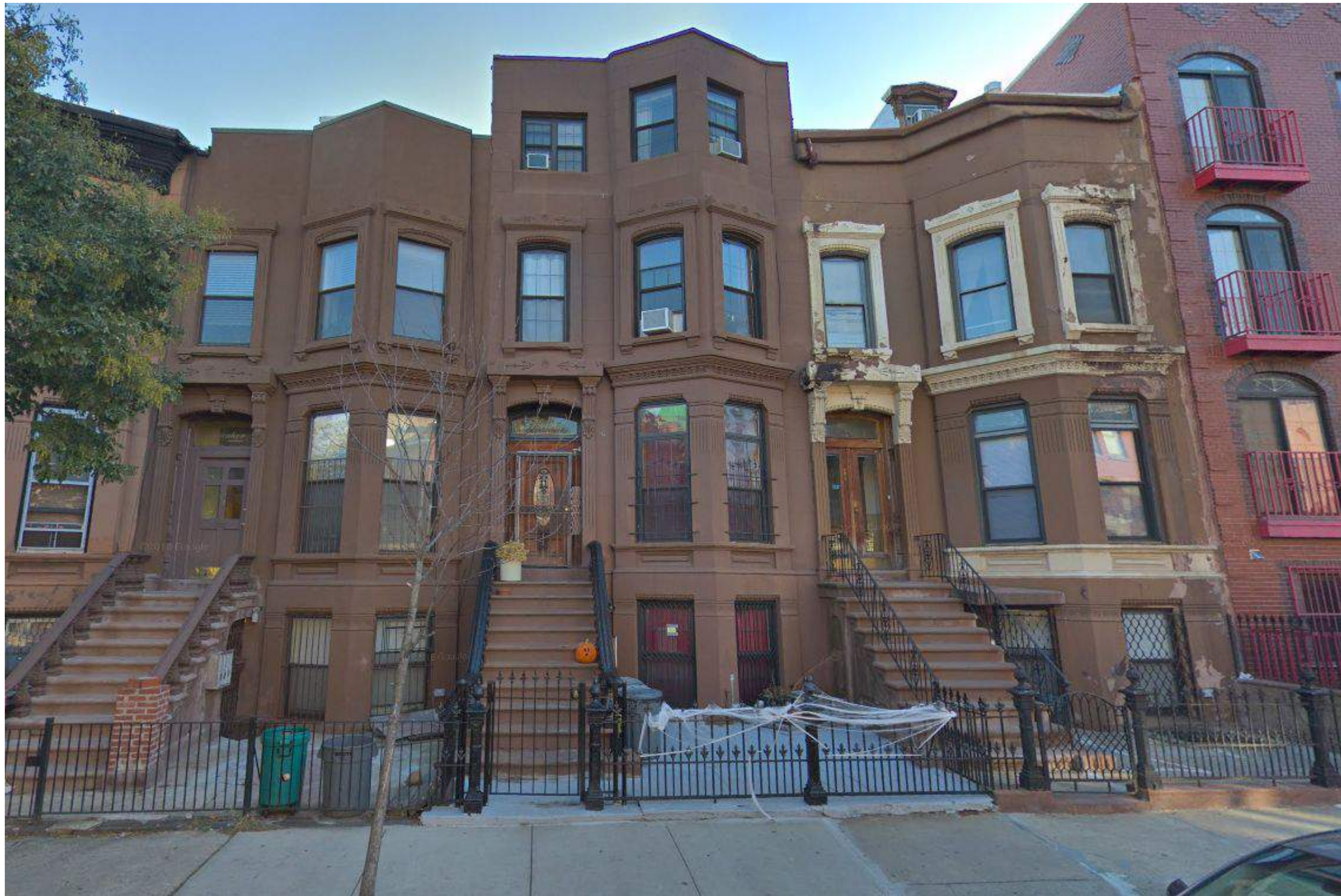
Proposed Front Elevation



17 Verona Place

19 Verona Place

21 Verona Place



17-21 Verona Place



Existing front areaway





3 Verona Place



5 Verona Place



9 Verona Place



11 Verona Place



13 Verona Place



15 Verona Place

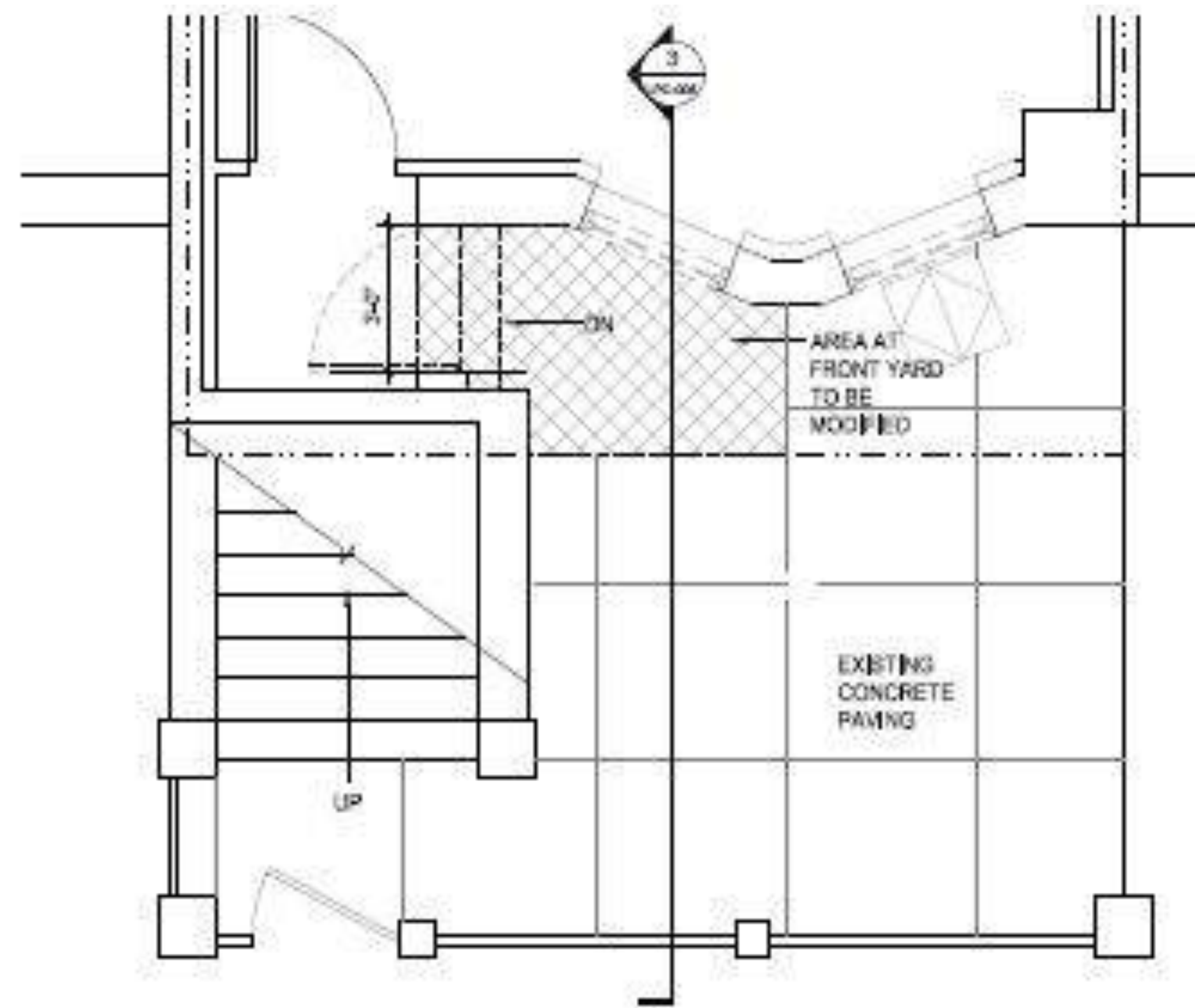


17 Verona Place

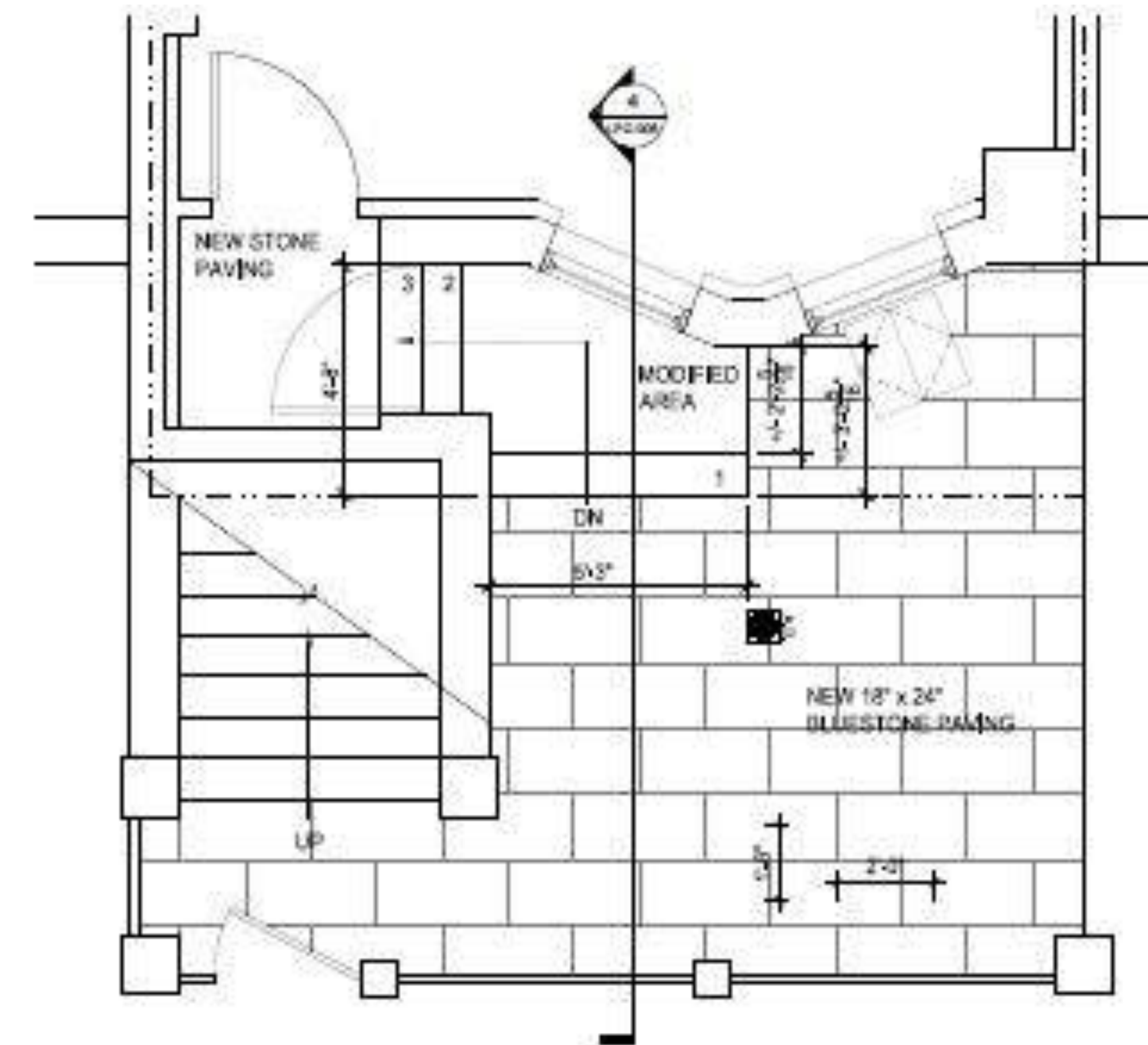


19 Verona Place

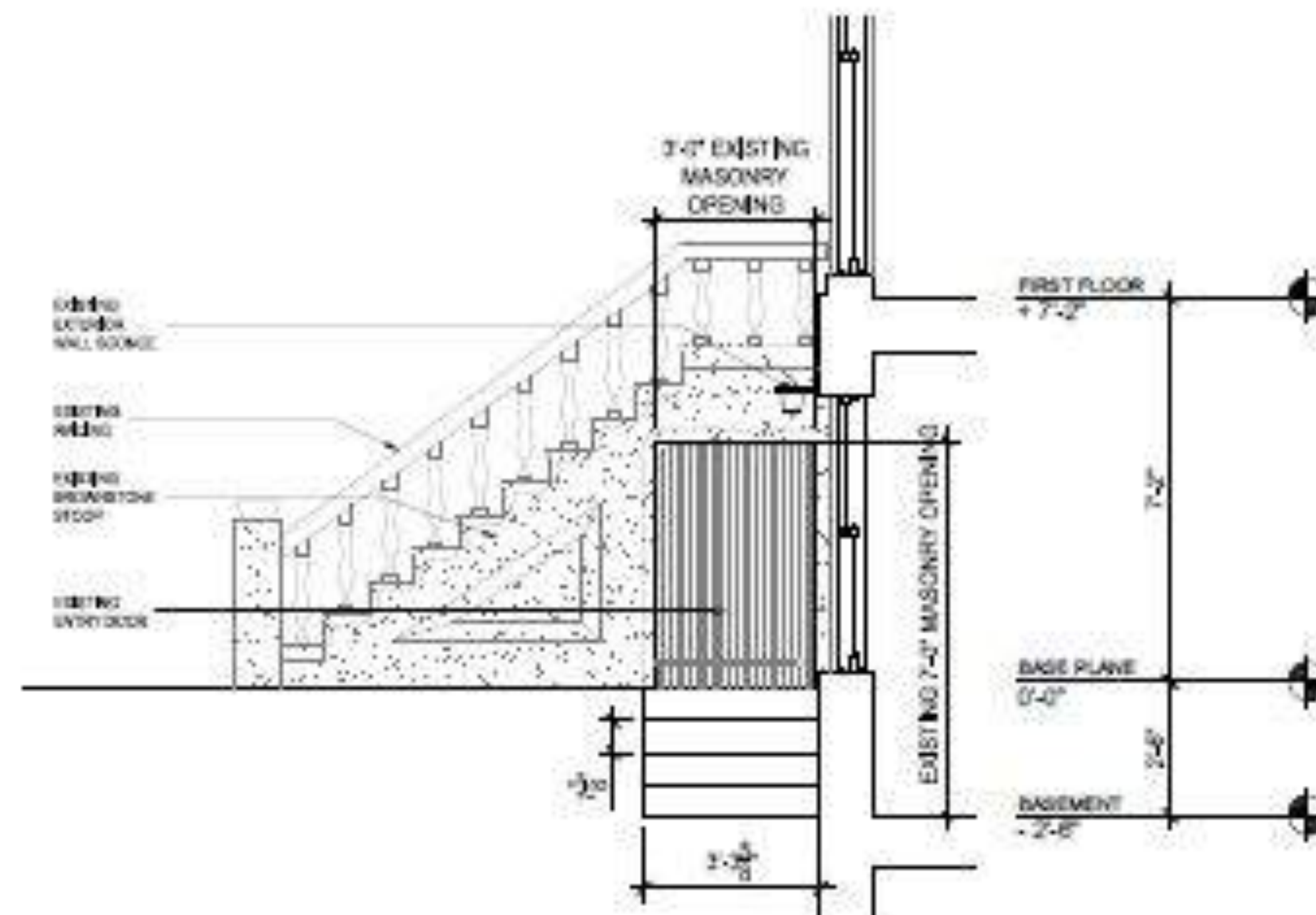
Neighboring front areaways



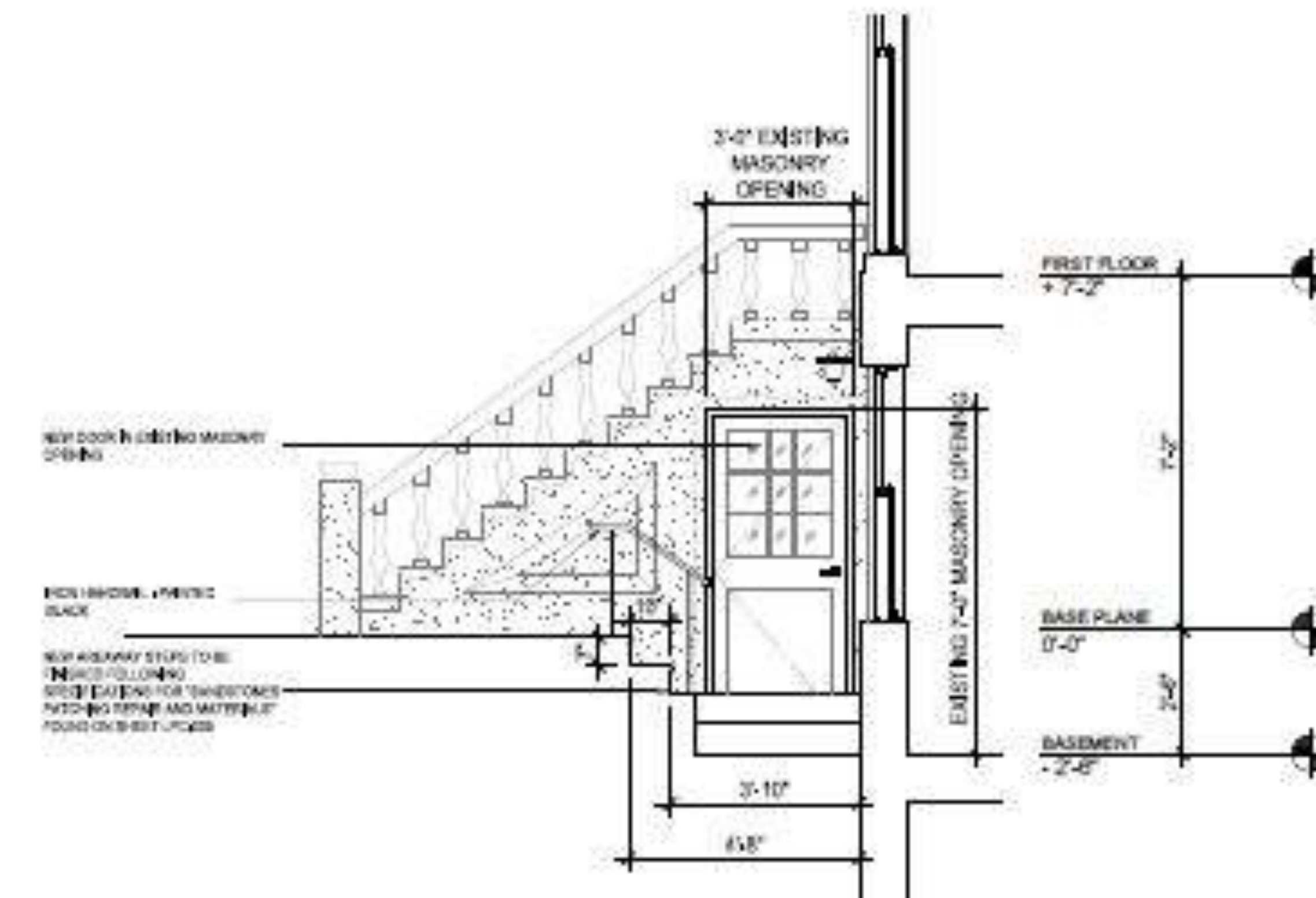
1
LPC-005
ENLARGED EXISTING FRONT YARD PLAN
SCALE: 1/2" = 1'-0"



2
LPC-005
ENLARGED PROPOSED FRONT YARD PLAN
SCALE: 1/2" = 1'-0"



3
LPC-005
EXISTING FRONT YARD SECTION
SCALE: 1/2" = 1'-0"



4
LPC-005
PROPOSED FRONT YARD SECTION
SCALE: 1/2" = 1'-0"