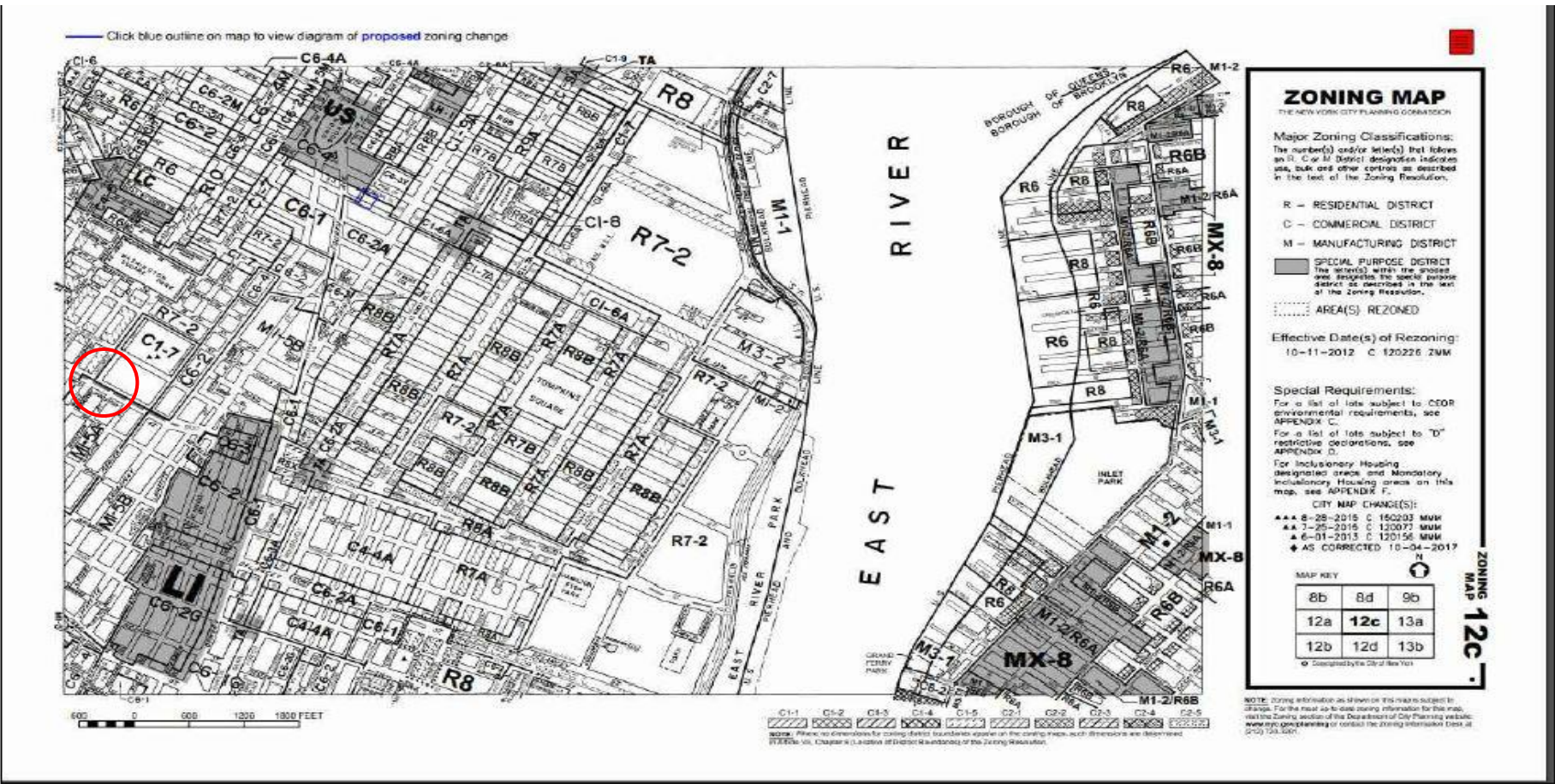


521 BROADWAY LPC SUBMITTAL



521 BROADWAY LPC SUBMITTAL

LOCATION AND ZONING

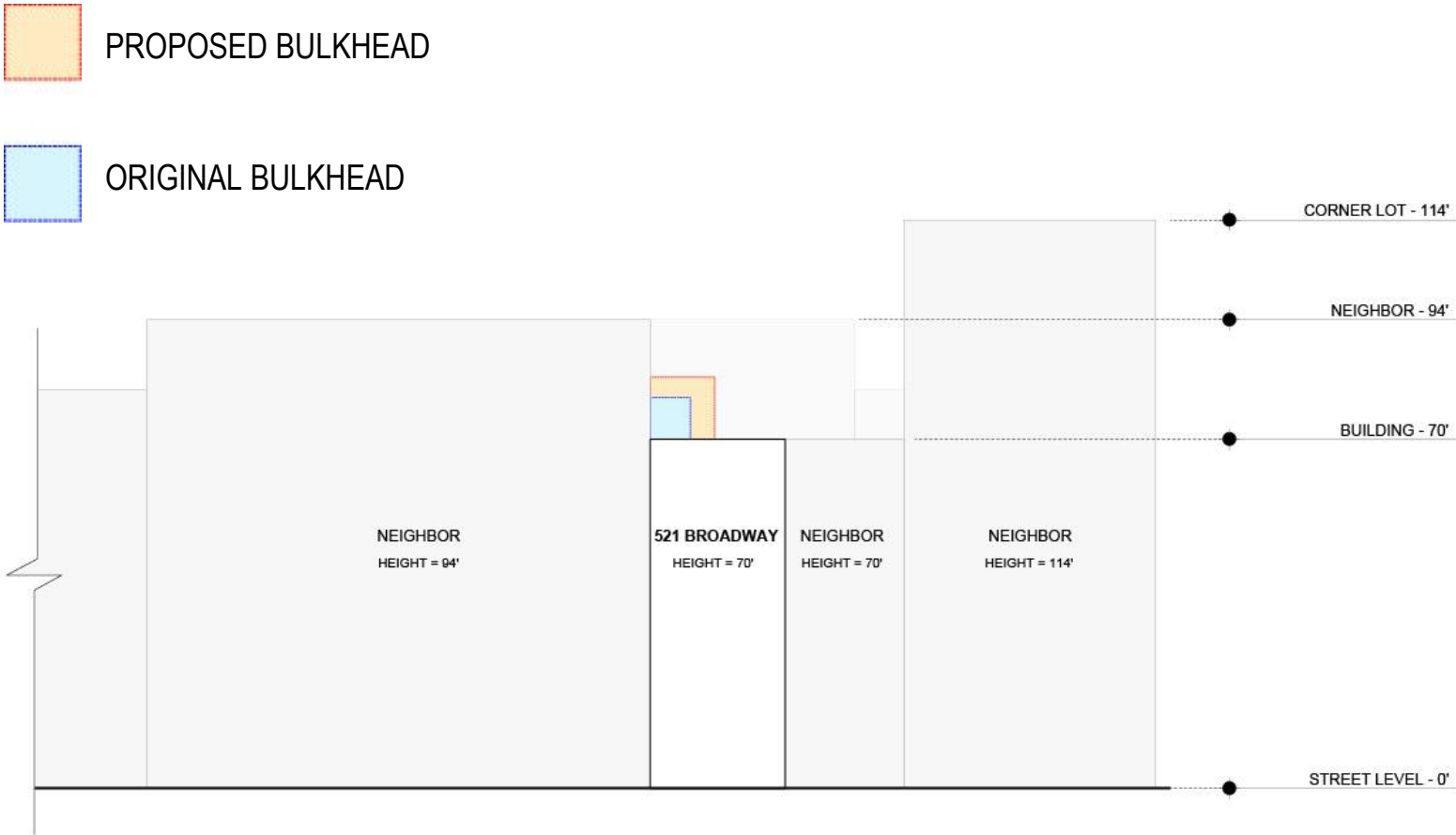


ZONING NOTES

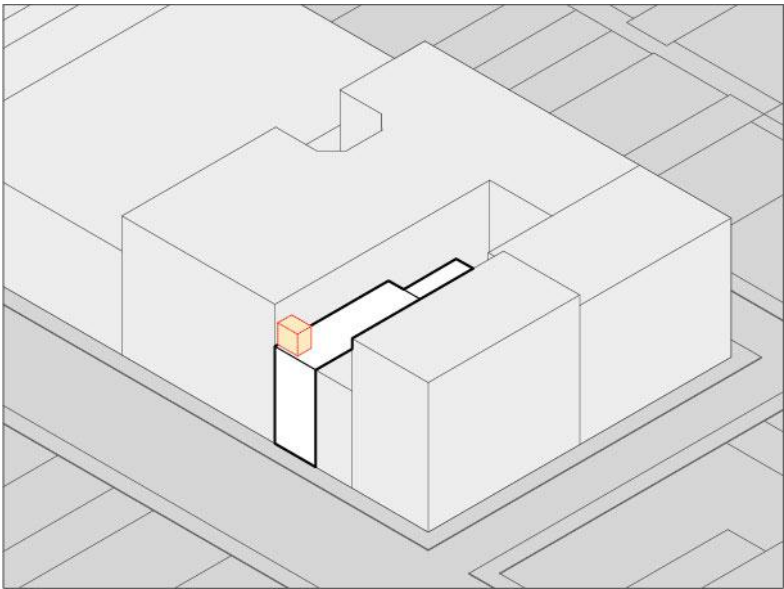
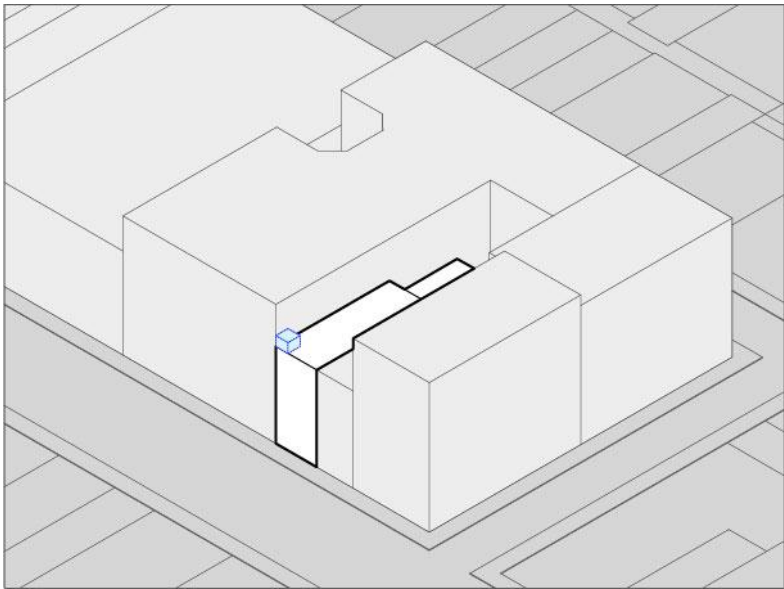
1. ZONING DISTRICT: M1-5B
2. USE PERMITTED: INDUSTRIAL AND MANUFACTURING
3. GROSS FLOOR AREA: 13,310 SF
4. OCCUPANCY: NO CHANGES IN OCCUPANCY
5. BUILDING OCCUPANCY GROUP: COMMERCIAL
6. CONSTRUCTION CLASSIFICATION: I-C - (2-HR. PROTECTED)
7. STORIES: 5

521 BROADWAY LPC SUBMITTAL

RELATIVE SCALE



ELEVATOR BULKHEAD:
AXO STUDY



521 BROADWAY LPC SUBMITTAL

STREET VIEW FROM THE NORTH

ORIGINAL BULKHEAD



PARTIALLY CONSTRUCTED BULKHEAD



PROPOSED BULKHEAD



STREET VIEW FROM THE NORTH



STREET VIEW FROM THE NORTH



STREET VIEW FROM THE NORTH



521 BROADWAY LPC SUBMITTAL

ELEVATOR BULKHEAD

ORIGINAL BULKHEAD



PARTIALLY CONSTRUCTED BULKHEAD



PROPOSED BULKHEAD



STREET VIEW FROM IN FRONT



STREET VIEW FROM IN FRONT



STREET VIEW FROM IN FRONT



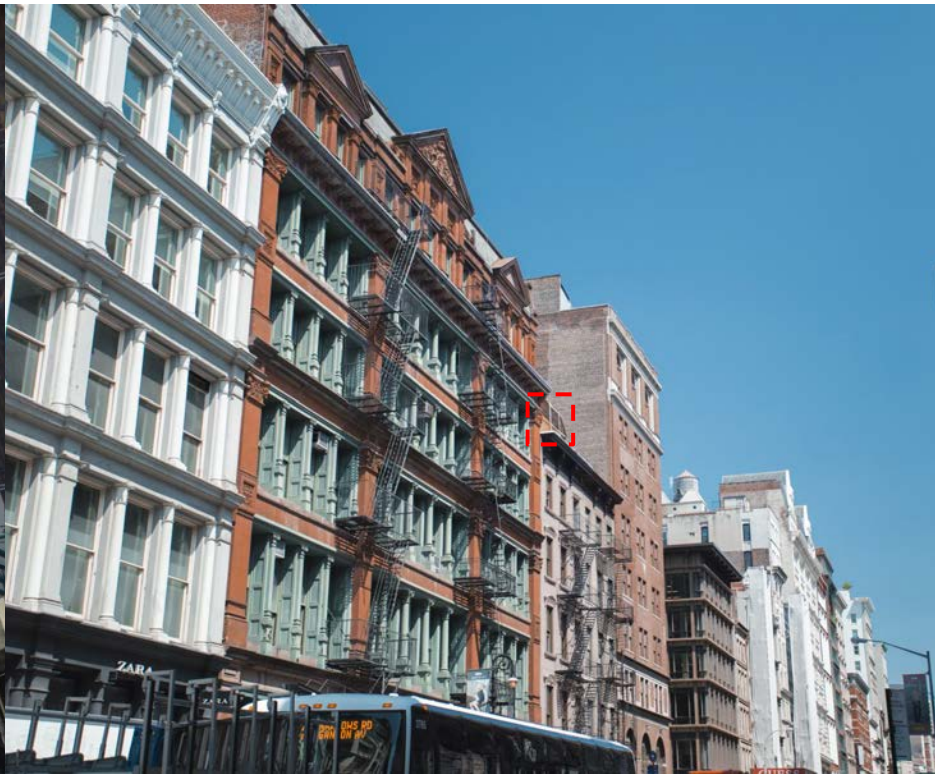
521 BROADWAY LPC SUBMITTAL

ELEVATOR BULKHEAD

ORIGINAL BULKHEAD



PARTIALLY CONSTRUCTED BULKHEAD



PROPOSED BULKHEAD



STREET VIEW FROM THE SOUTH



STREET VIEW FROM THE SOUTH



STREET VIEW FROM THE SOUTH



521 BROADWAY LPC SUBMITTAL

ELEVATOR BULKHEAD



ORIGINAL BULKHEAD



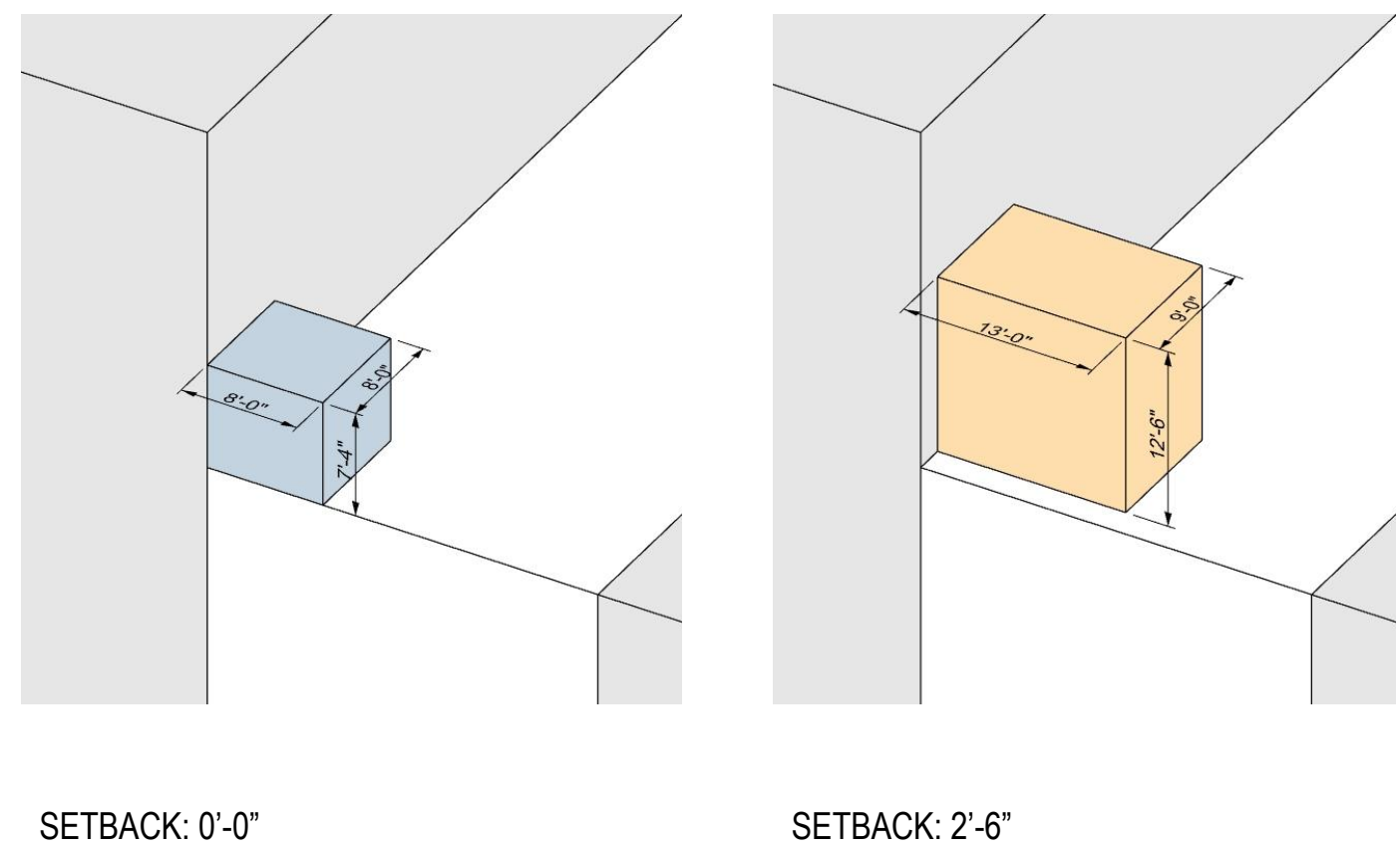
PARTIALLY CONSTRUCTED BULKHEAD

521 BROADWAY LPC SUBMITTAL

SCALE COMPARISON

PROPOSED BULKHEAD

ORIGINAL BULKHEAD

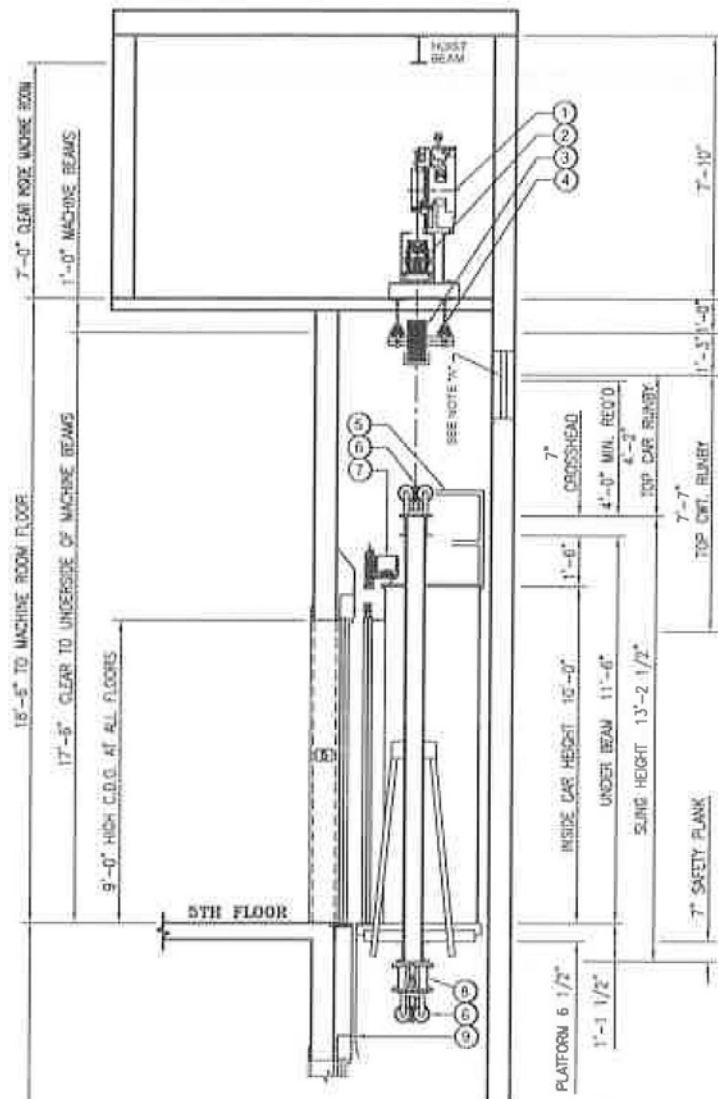


PROPOSED BULKHEAD

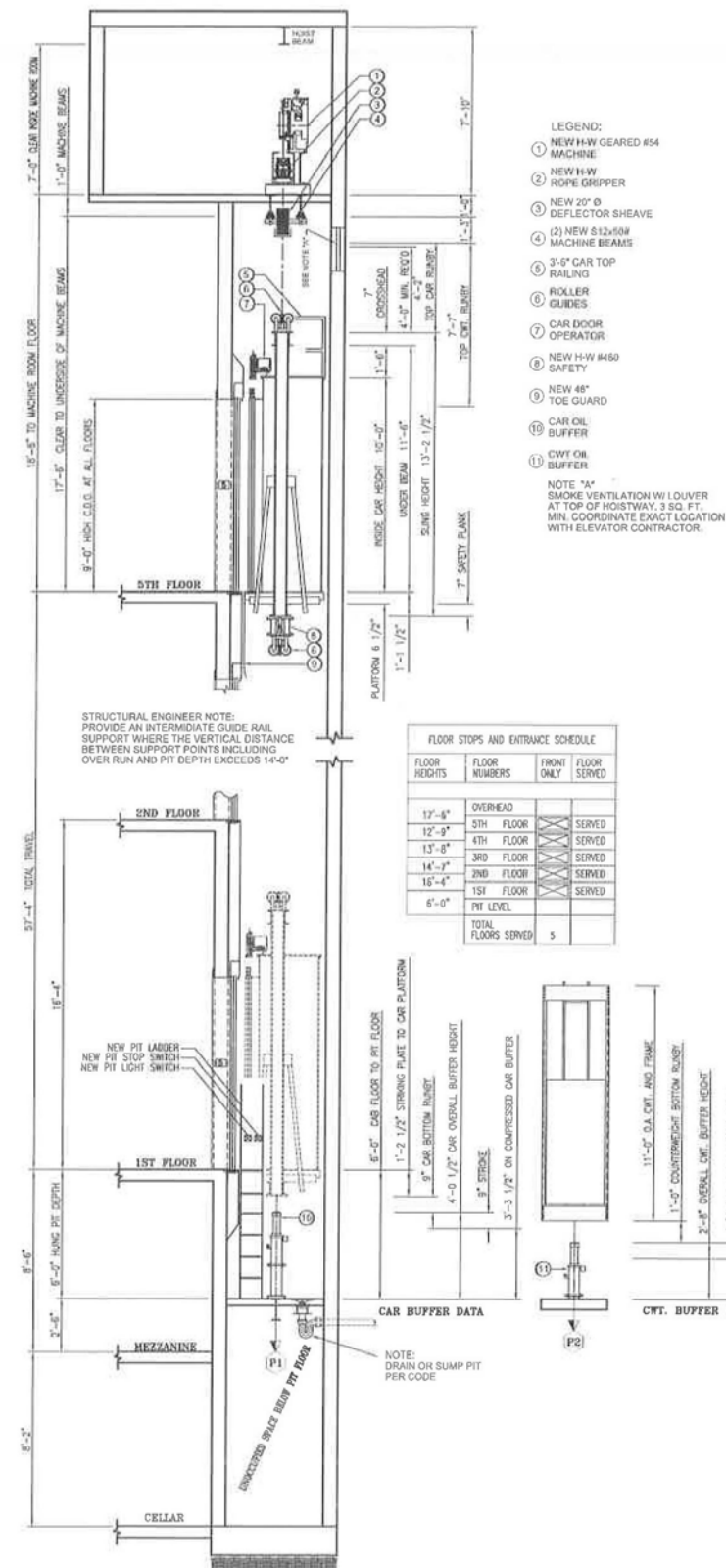
ORIGINAL BULKHEAD



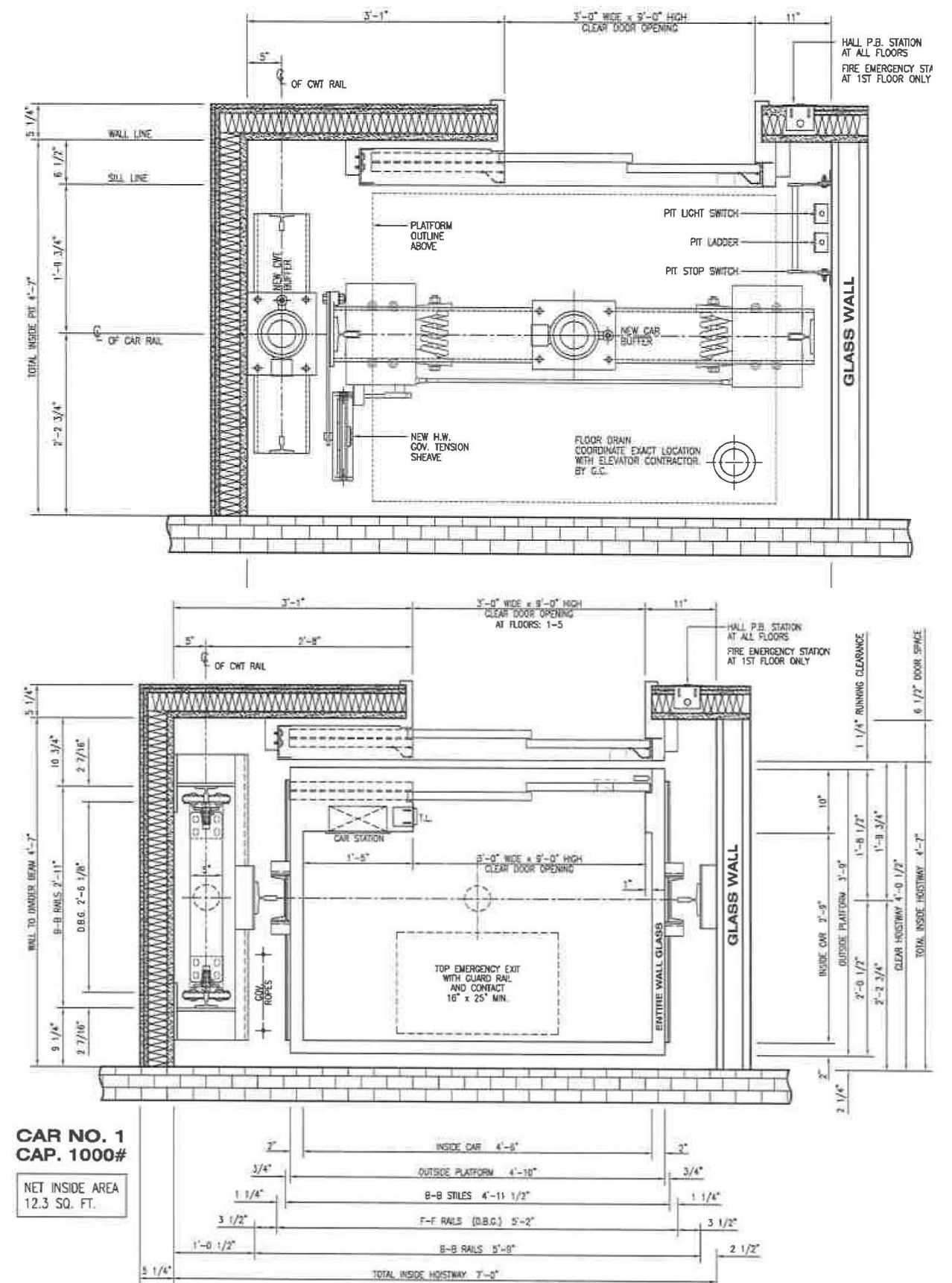
PROPOSED SYSTEM DRAWINGS



SECTION DETAIL



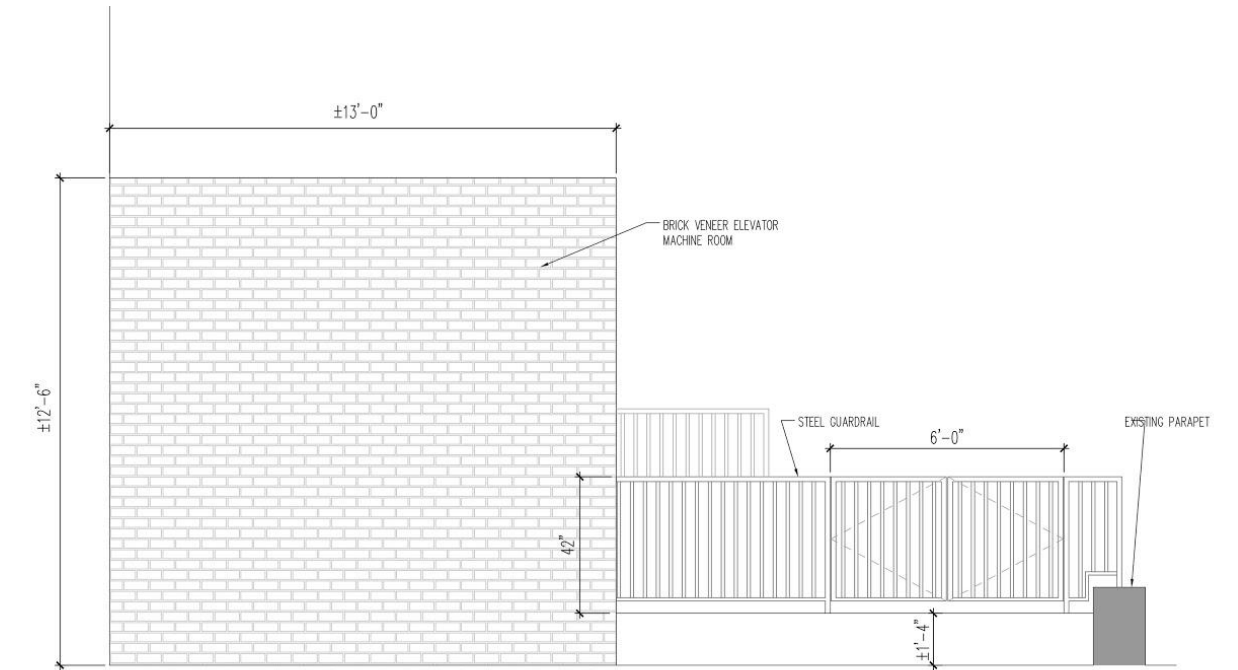
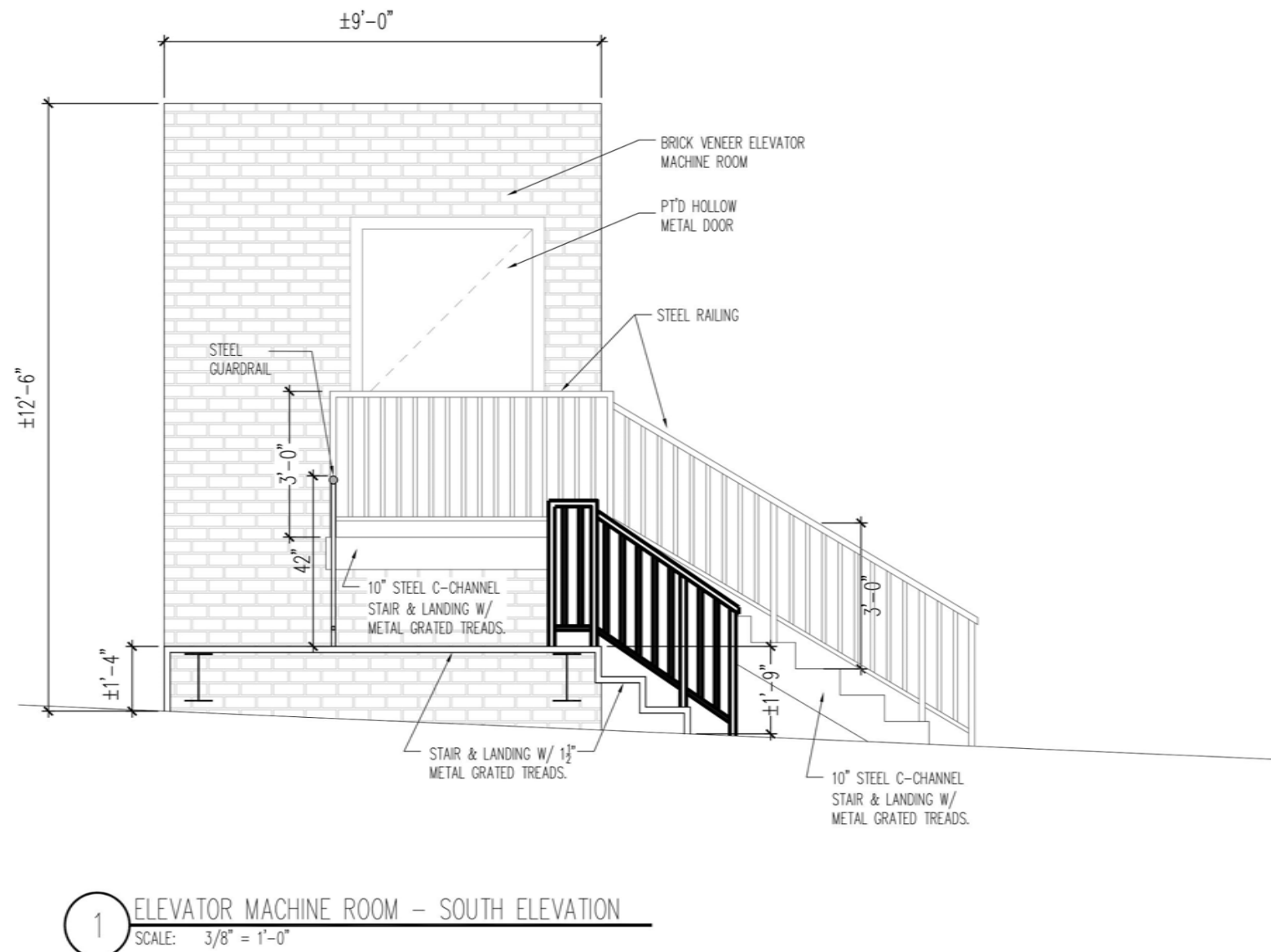
BUILDING SECTION



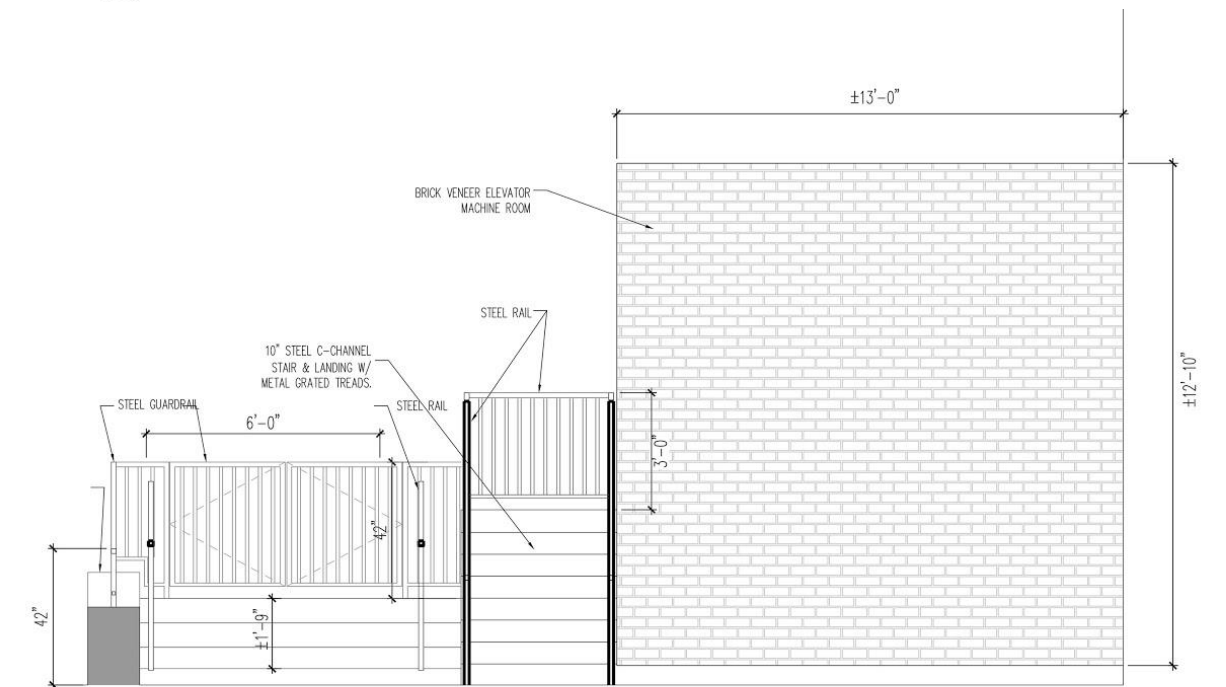
PLAN DETAILS

521 BROADWAY LPC SUBMITTAL

PROPOSED BULKHEAD DRAWINGS



2 ELEVATOR MACHINE ROOM - WEST ELEVATION
SCALE: $3/8" = 1'-0"$



3 ELEVATOR MACHINE ROOM - EAST ELEVATION
SCALE: 3/8" = 1'-0"

521 BROADWAY LPC SUBMITTAL

CLADDING AND FINISH



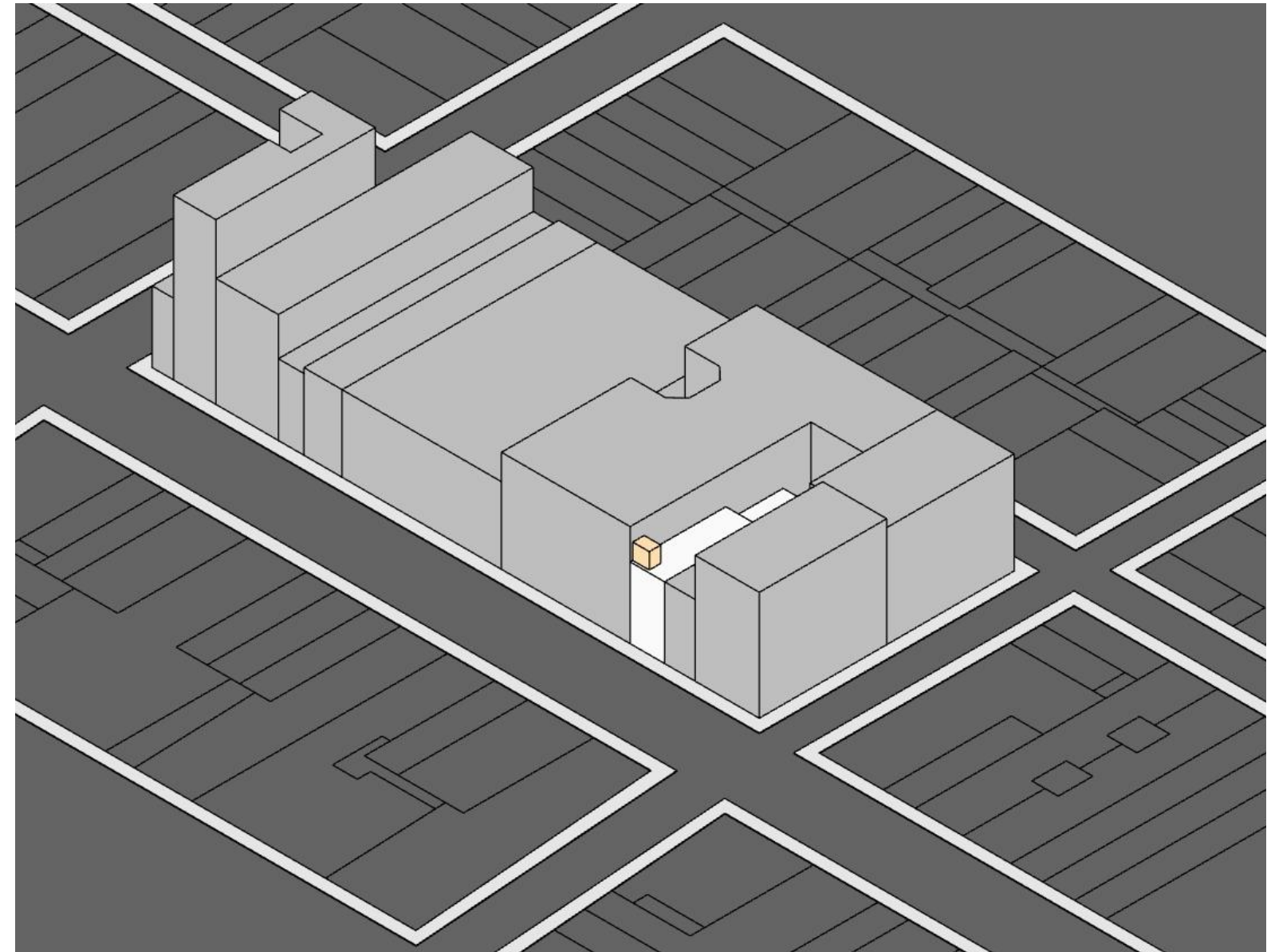
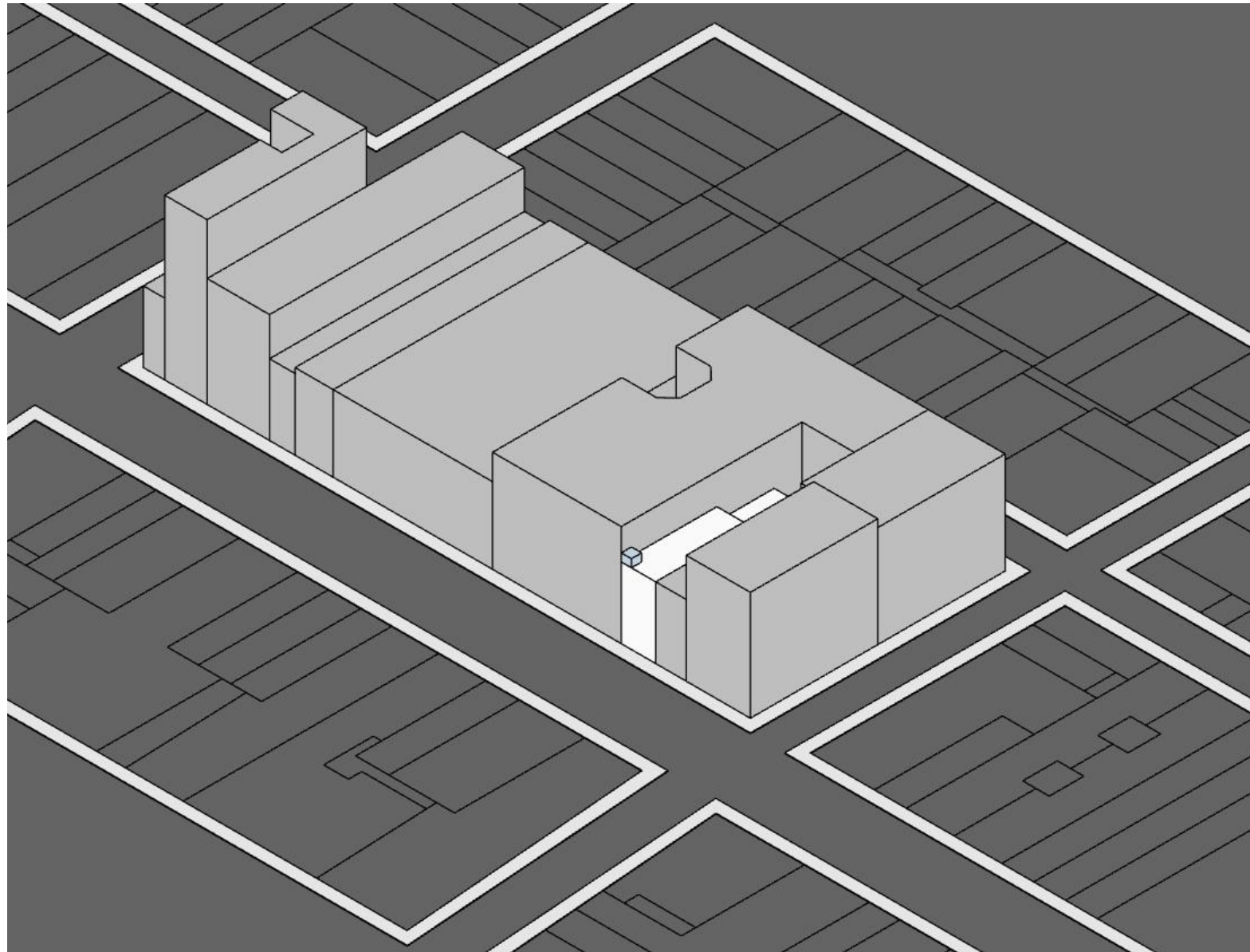
EXISTING BRICKS ARE IN GOOD CONDITION, AND
THEY WILL BE REUSED FOR THE CLADDING OF THE
NEW BULKHEAD

521 BROADWAY LPC SUBMITTAL

APPENDIX

521 BROADWAY LPC SUBMITTAL

521 BROADWAY BLOCK



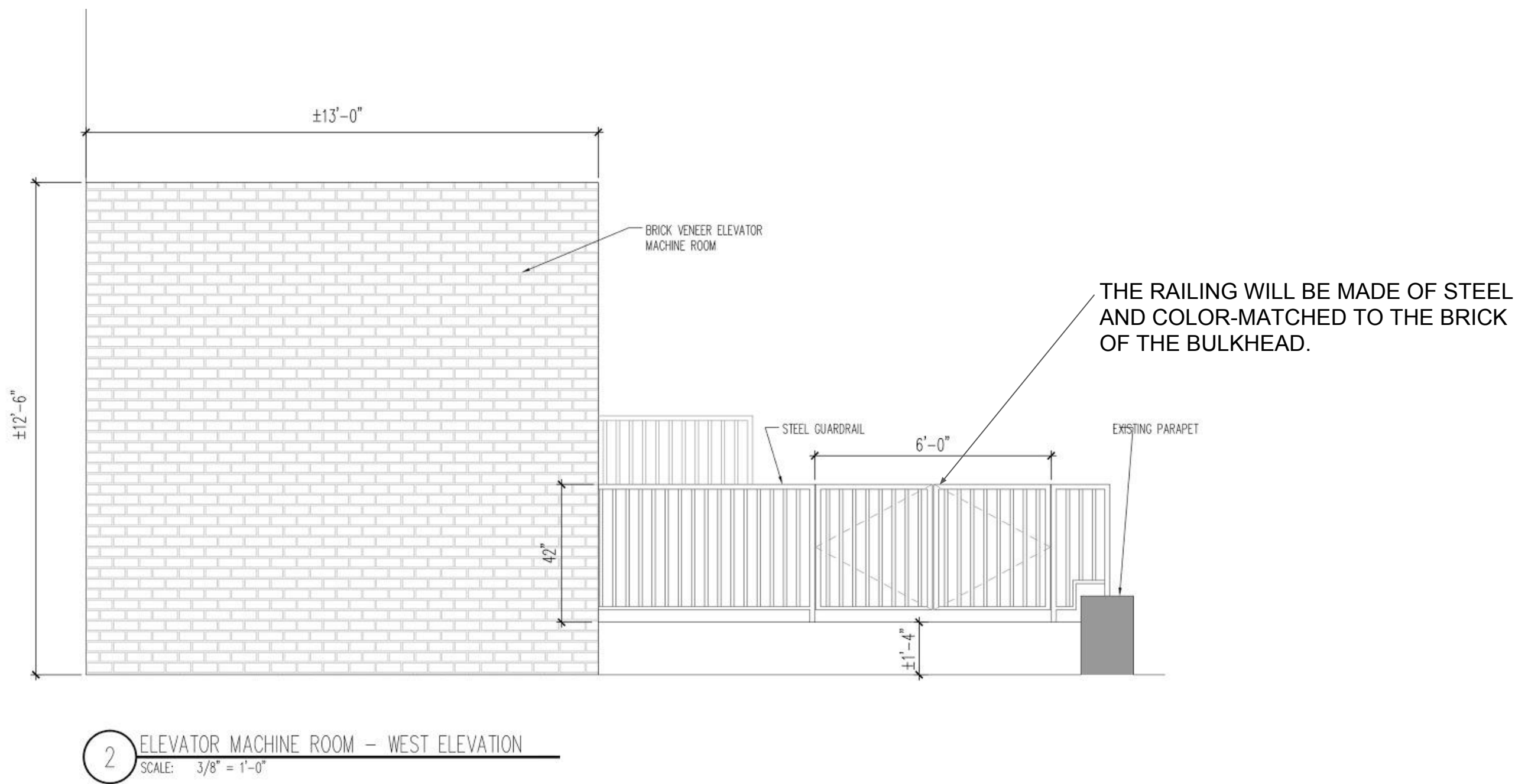
521 BROADWAY LPC SUBMITTAL

ADDITIONAL PROPOSED VIEWS FROM THE STREET



521 BROADWAY LPC SUBMITTAL

CLADDING AND FINISH



521 BROADWAY LPC SUBMITTAL

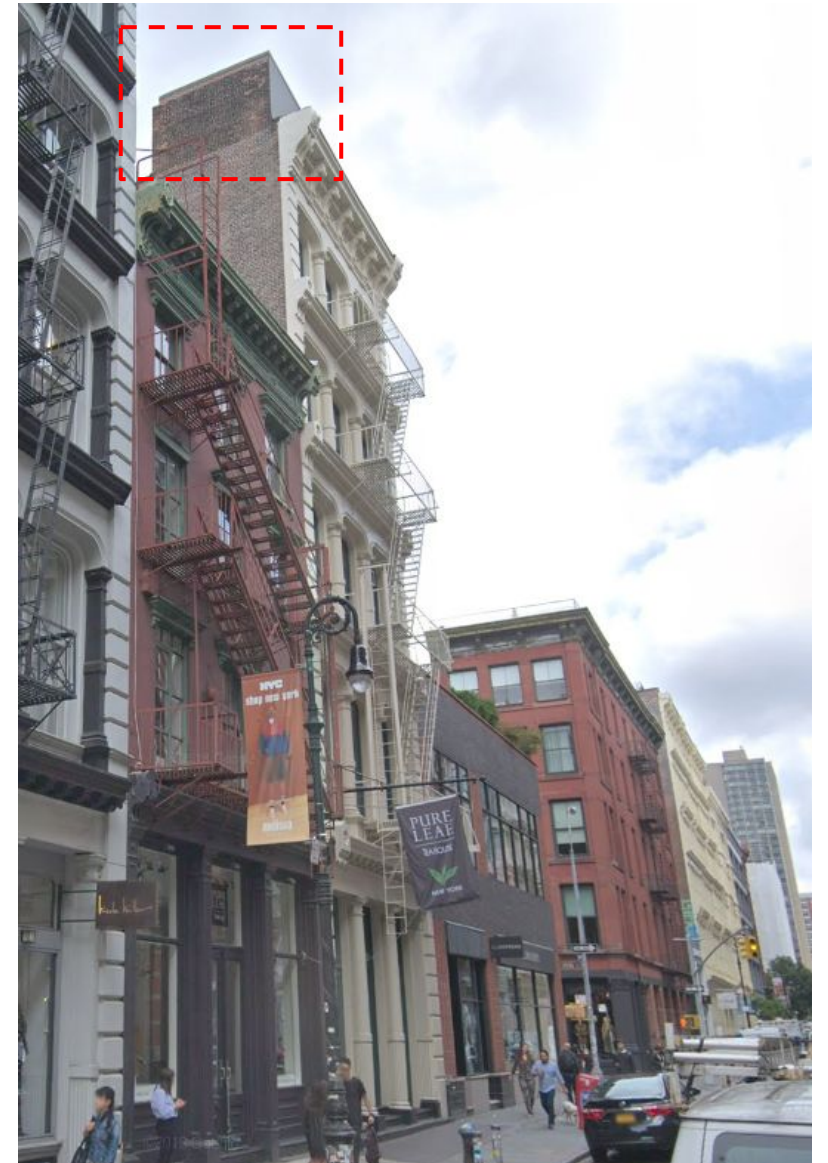
OTHER BULKHEADS IN SOHO'S CAST IRON HISTORIC DISTRICT



501 BROADWAY



CORNER OF MERCER AND SPRING



CORNER OF GREENE AND SPRING

521 BROADWAY LPC SUBMITTAL

OTHER BULKHEADS IN SOHO'S CAST IRON HISTORIC DISTRICT



MERCER BETWEEN BROOME AND SPRING



CORNER OF BROOME AND GREENE