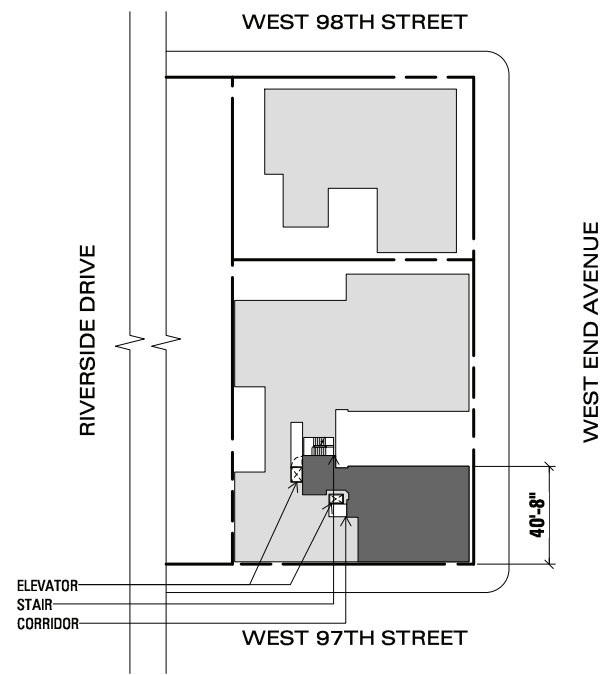
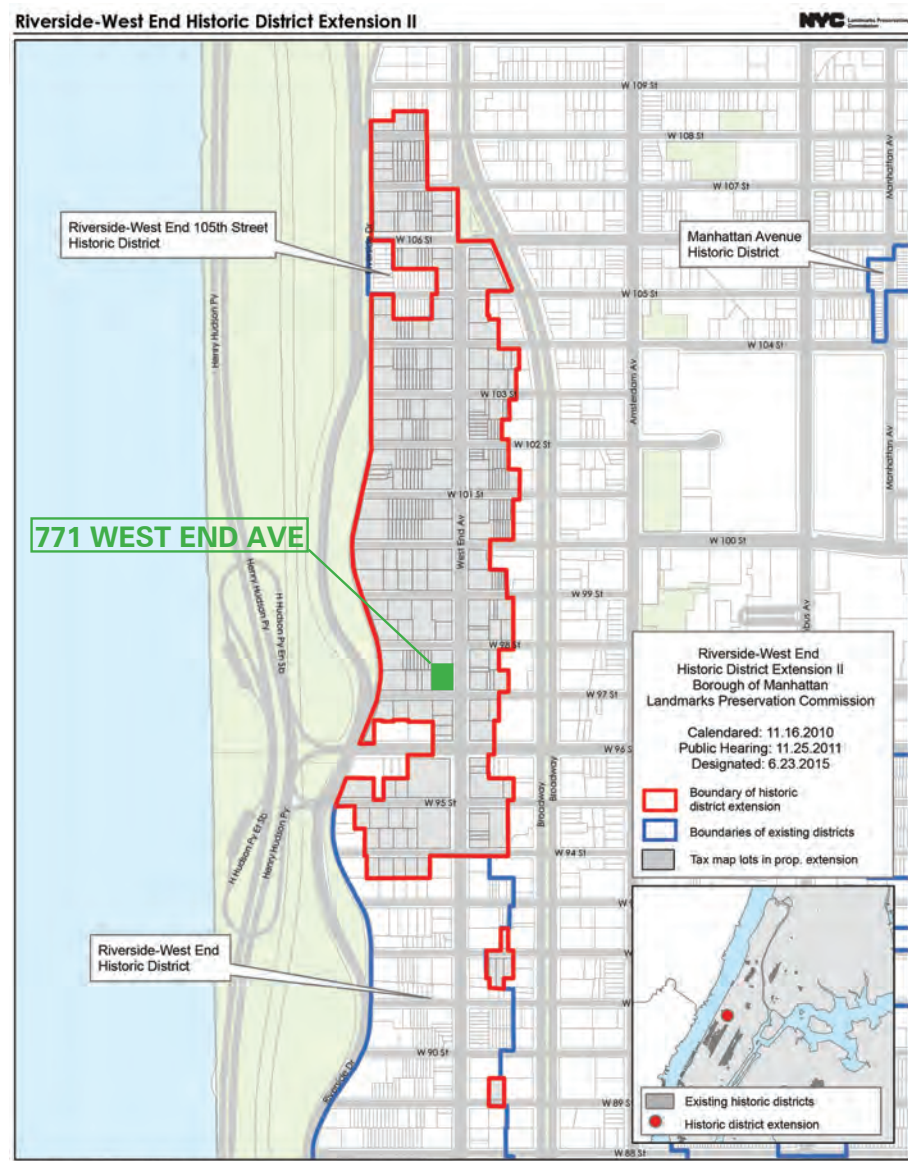


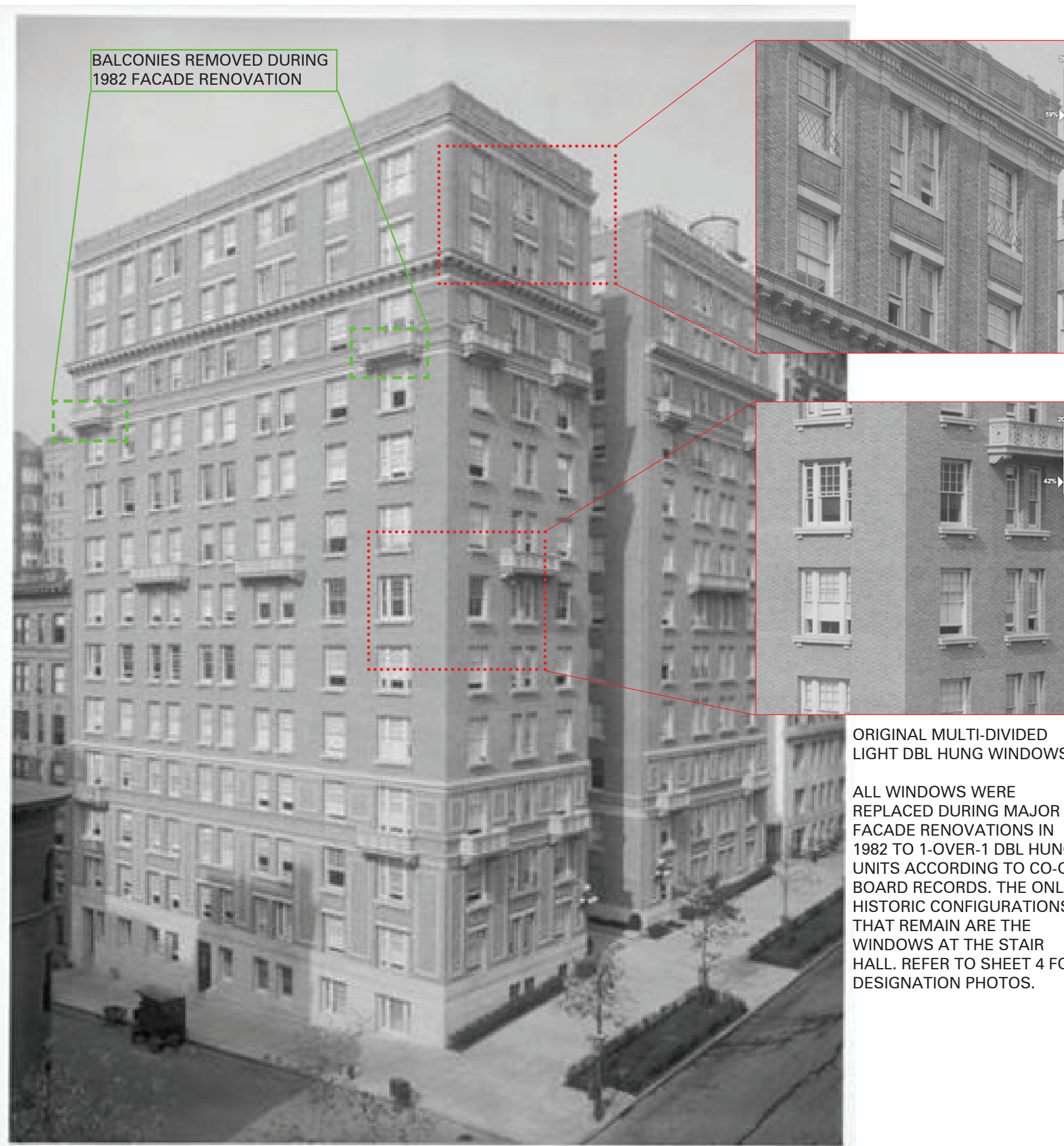
PROJECT LOCATION PLAN



HISTORIC DISTRICT MAP - DESIGNATED IN 2015



HISTORIC PHOTO - CIRCA 1915



CHRISTMAN RESIDENCE

771 WEST END AVENUE
APARTMENT 12A

APPLICATION FOR WINDOW REPLACEMENT TO MATCH EXISTING: 1 OVER 1 DBL HUNG WOOD CLAD UNITS

SHEET 1 OF 13



CWB ARCHITECTS

45 Main Street
Suite 824
Brooklyn, NY 11201



APPLICATION FOR
WINDOW REPLACEMENT
TO MATCH EXISTING:
1 OVER 1 DBL HUNG
WOOD CLAD UNITS

SHEET 2 OF 13

-  = EXISTING 1-OVER-1, DBL HUNG WINDOWS
-  = HISTORIC CONFIGURATION, DBL HUNG WINDOWS



CWB ARCHITECTS

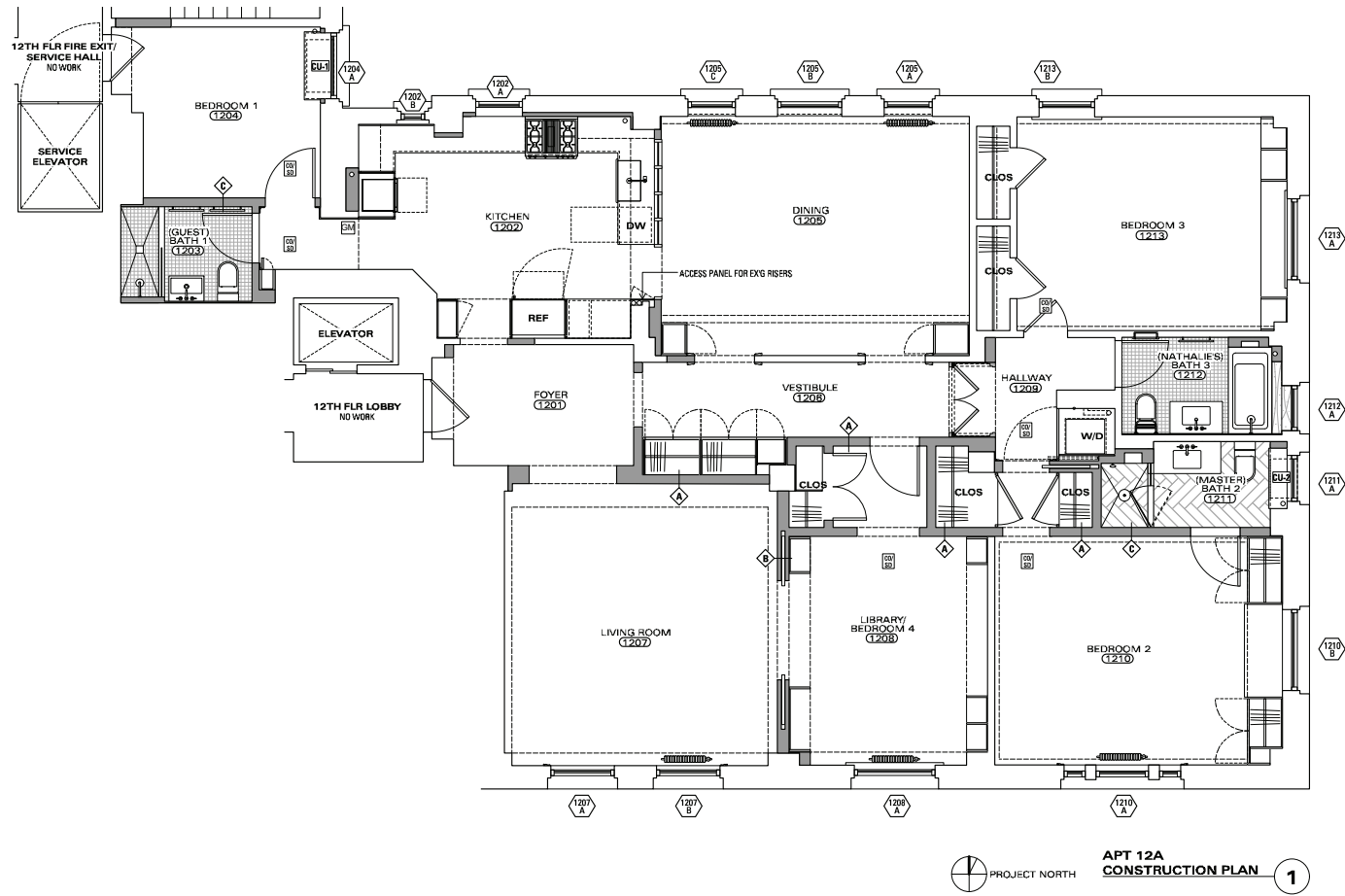
45 Main Street
Suite 824
Brooklyn, NY 11201



APPLICATION FOR
WINDOW REPLACEMENT
TO MATCH EXISTING:
1 OVER 1 DBL HUNG
WOOD CLAD UNITS

SHEET 3 OF 13

-  = EXISTING 1-OVER-1, DBL HUNG WINDOWS
-  = HISTORIC CONFIGURATION, DBL HUNG WINDOWS



- = EXISTING 1-OVER-1, DBL HUNG WINDOWS
- = HISTORIC CONFIGURATION, DBL HUNG WINDOWS

771 WEST END AVENUE
APARTMENT 12A

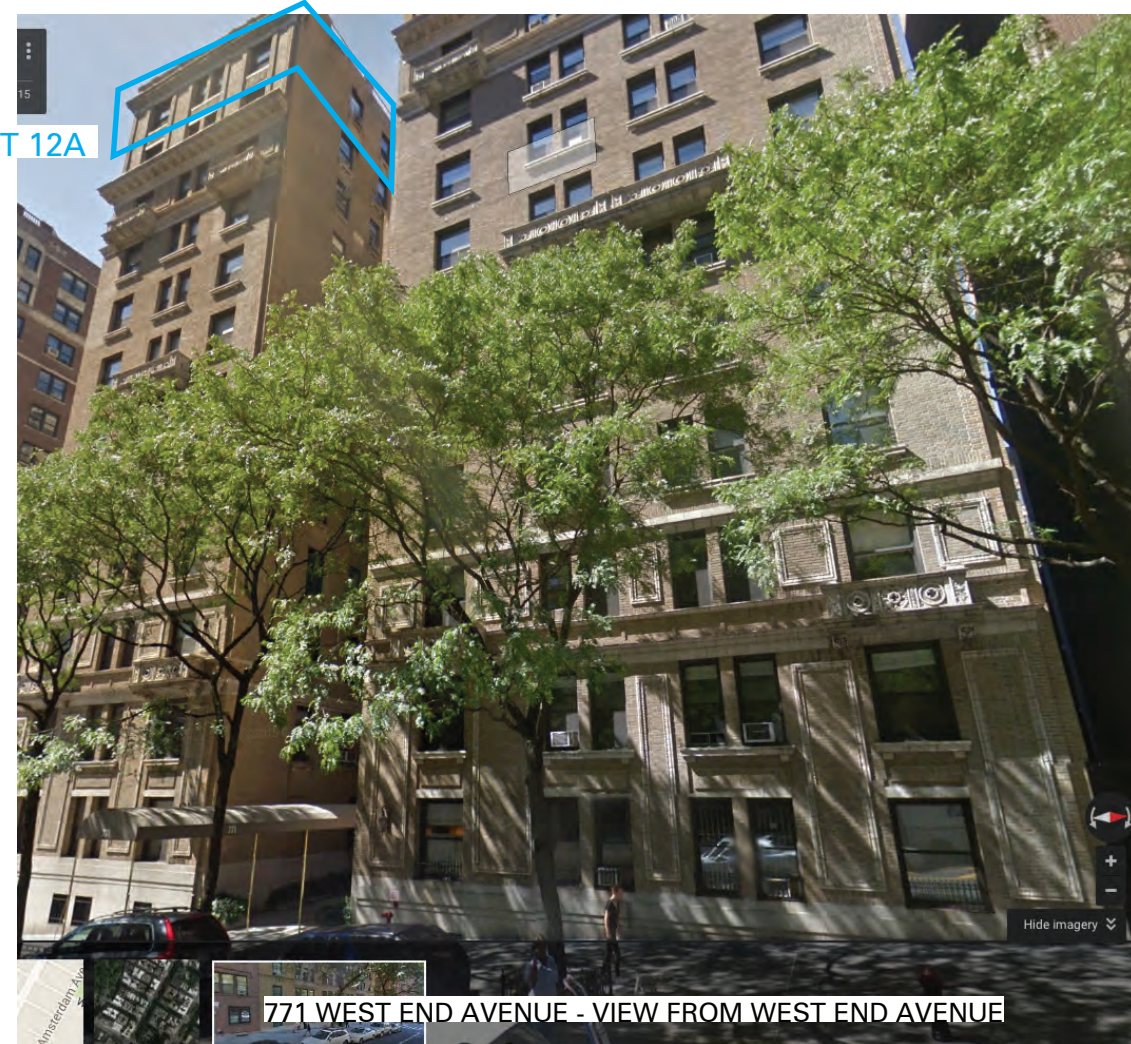
APPLICATION FOR
WINDOW REPLACEMENT
TO MATCH EXISTING:
1 OVER 1 DBL HUNG
WOOD CLAD UNITS

SHEET 4 OF 13

CWB ARCHITECTS

45 Main Street
Suite 824
Brooklyn, NY 11201

771 WEST END AVENUE
APARTMENT 12A

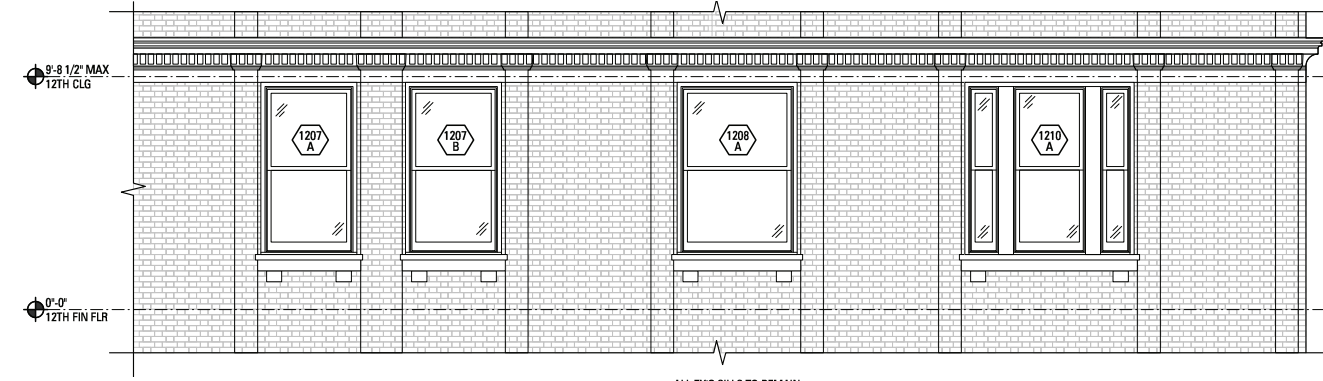


APPLICATION FOR
WINDOW REPLACEMENT
TO MATCH EXISTING:
1 OVER 1 DBL HUNG
WOOD CLAD UNITS

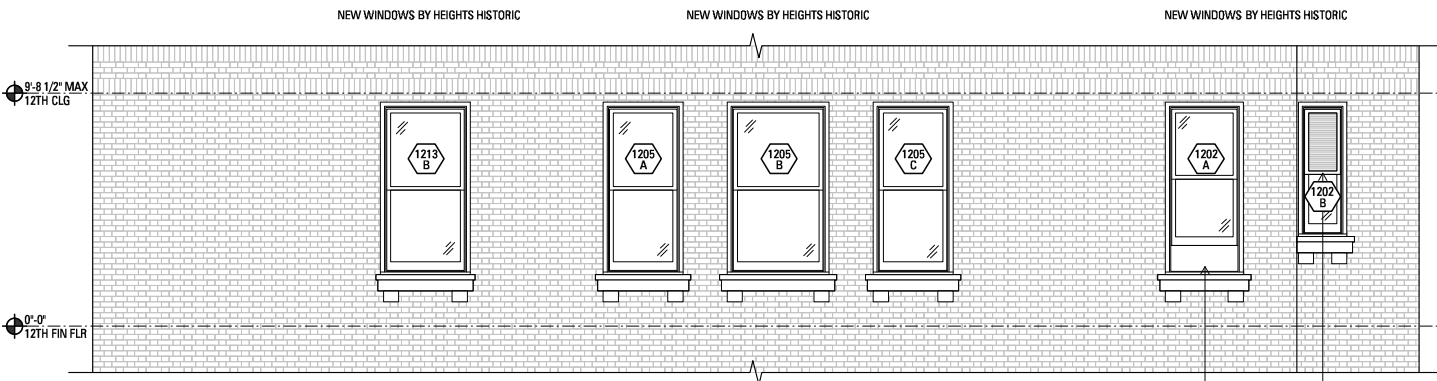
SHEET 5 OF 13

CWB ARCHITECTS

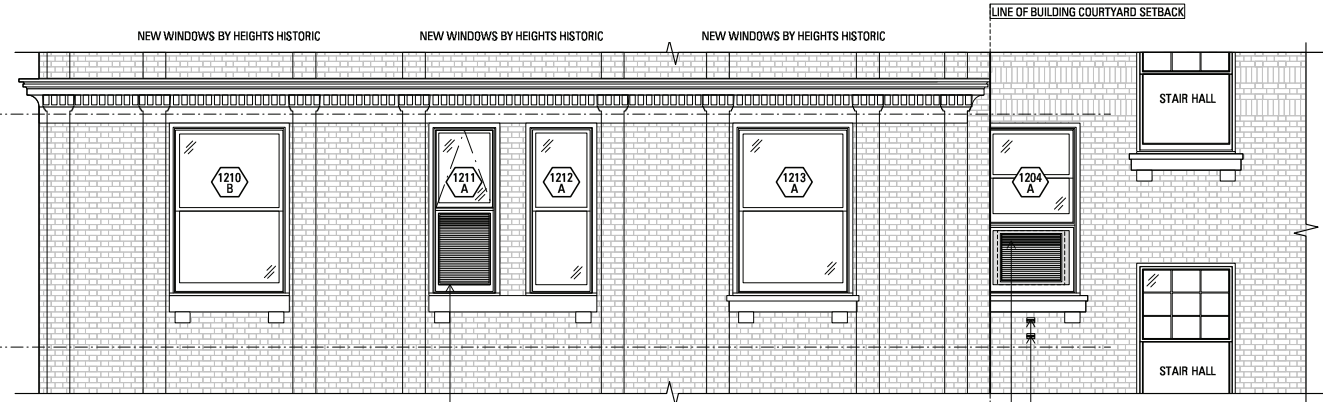
45 Main Street
Suite 824
Brooklyn, NY 11201



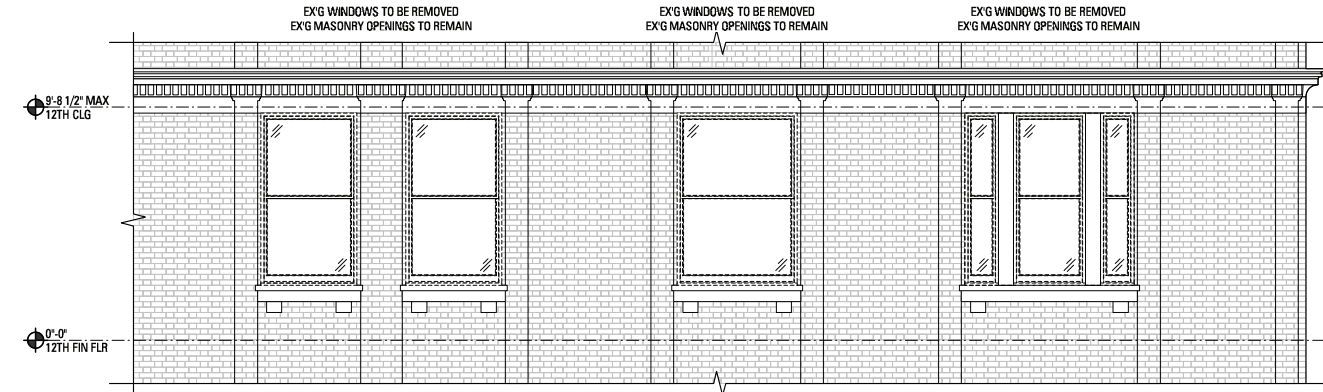
**SOUTH ELEVATION
PROPOSED CONDITIONS**
SCALE 1/8" = 1'-0" **6**



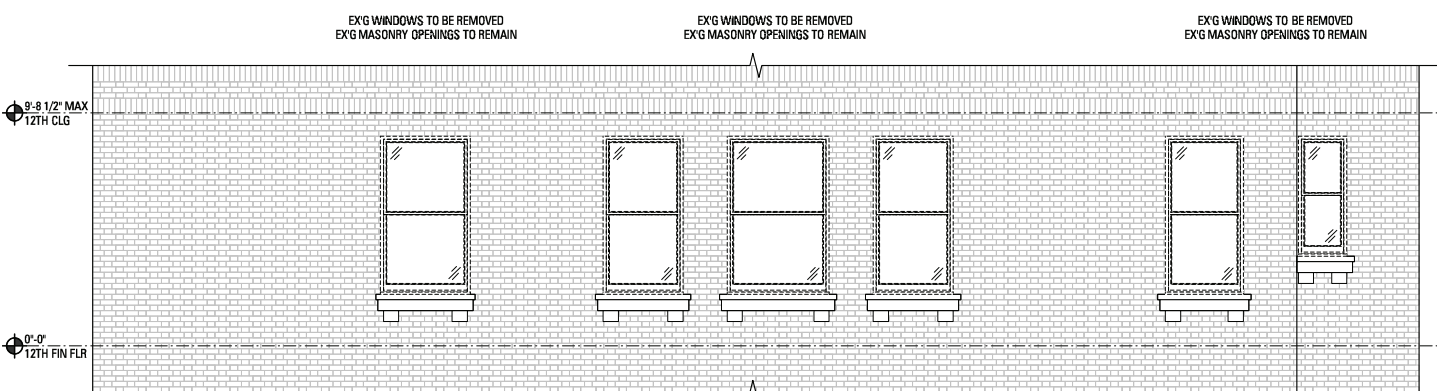
**NORTH ELEVATION
PROPOSED CONDITIONS**
SCALE 1/8" = 1'-0" **5**



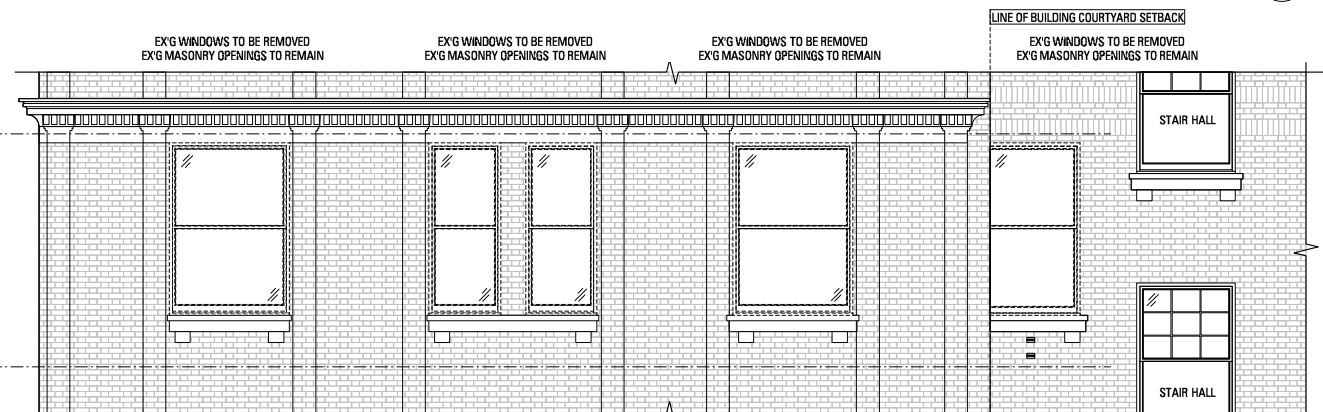
**EAST ELEVATION
PROPOSED CONDITIONS**
SCALE 1/8" = 1'-0" **4**



**SOUTH ELEVATION
EXG CONDITIONS**
SCALE 1/8" = 1'-0" **3**



**NORTH ELEVATION
EXG CONDITIONS**
SCALE 1/8" = 1'-0" **2**



**EAST ELEVATION
EXG CONDITIONS**
SCALE 1/8" = 1'-0" **1**

APPLICATION FOR
WINDOW REPLACEMENT
TO MATCH EXISTING:
1 OVER 1 DBL HUNG
WOOD CLAD UNITS

SHEET 6 OF 13



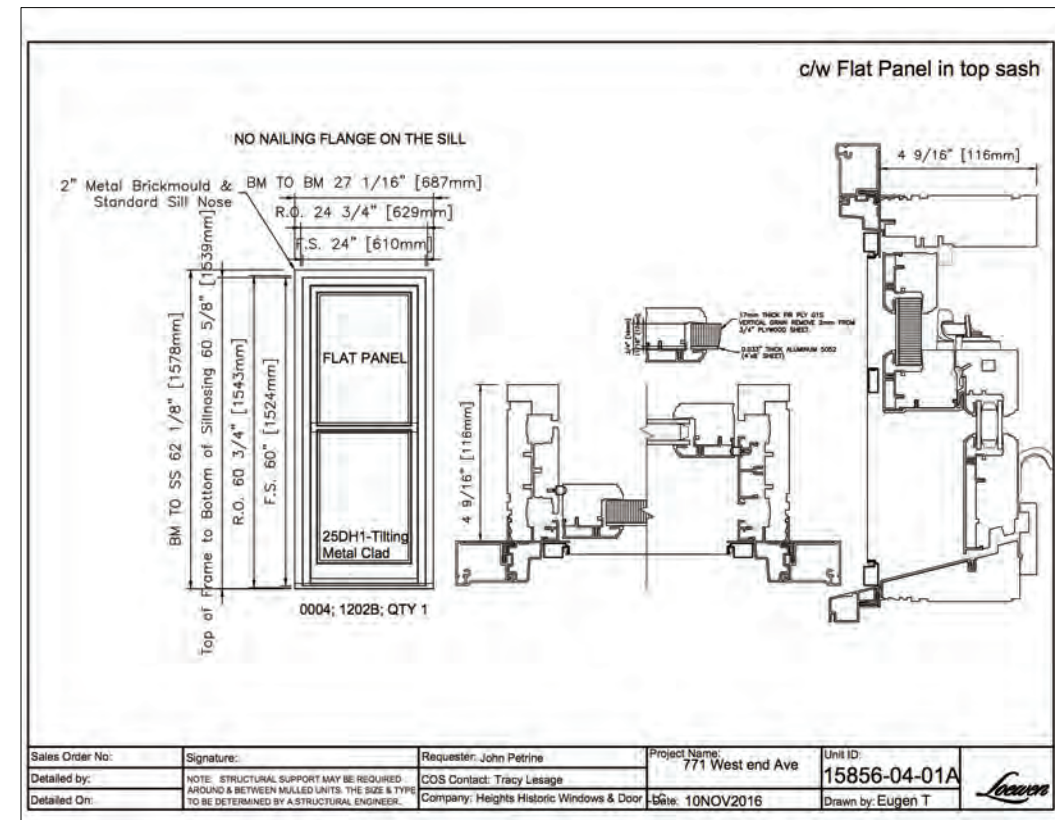
**ENTRY COURTYARD
FACADE: EXISTING**
N.T.S.

5



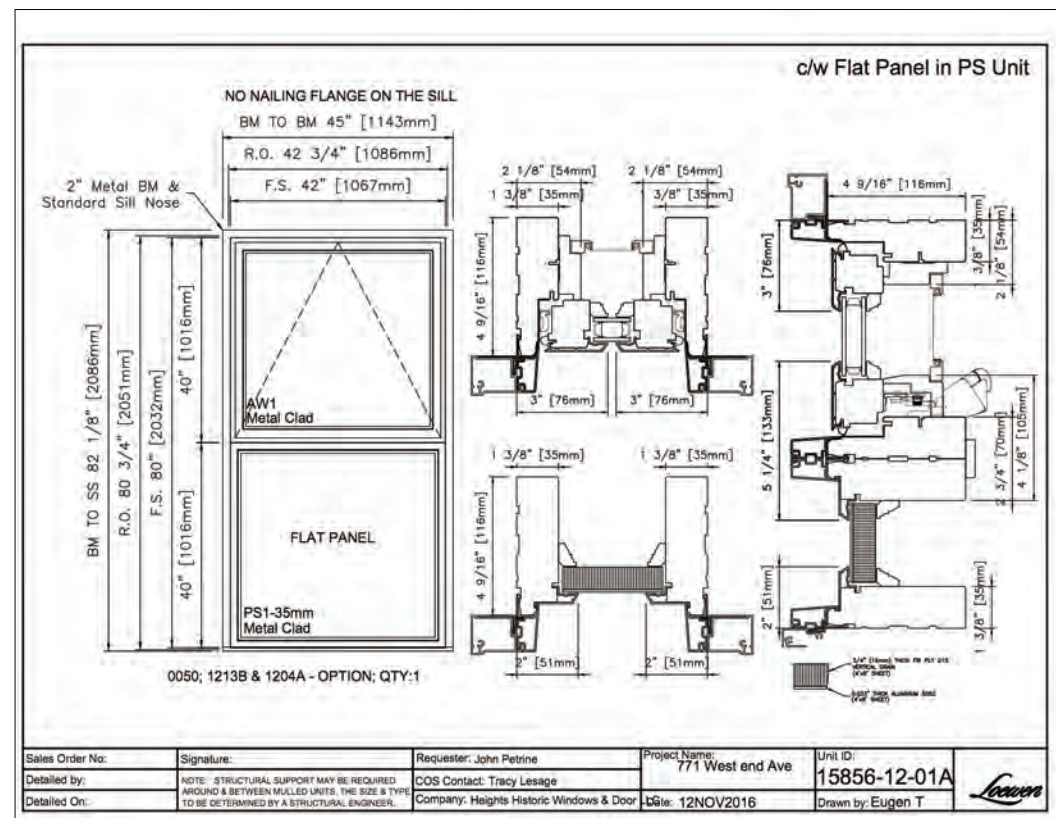
**EX'G STEEL
DBL HUNG WINDOW**
N.T.S.

4



WINDOW DTL: 1202B
N.T.S.

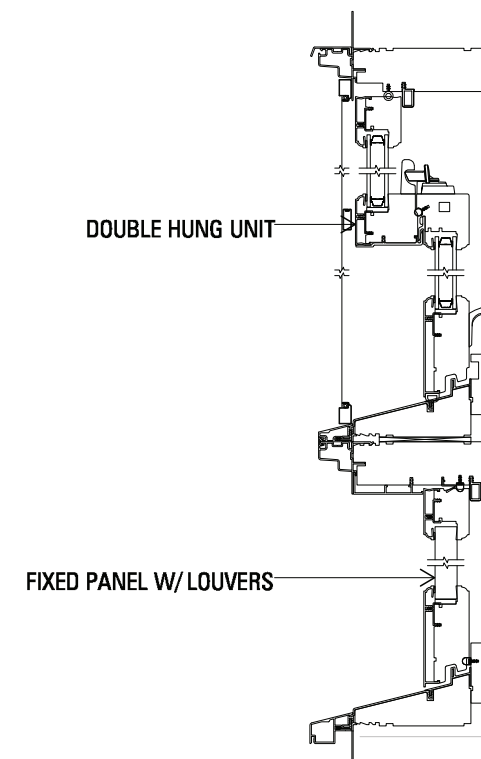
3



WINDOW DTL: 1211A
N.T.S.

2

COLOR TO MATCH EXISTING WINDOW UNITS:
LOEWEN - MIDNIGHT BRONZE, EQUIVALENT
TO ARCHITECTURAL BRONZE



**WINDOW DTL:
1204A / 1202A**
N.T.S.

1

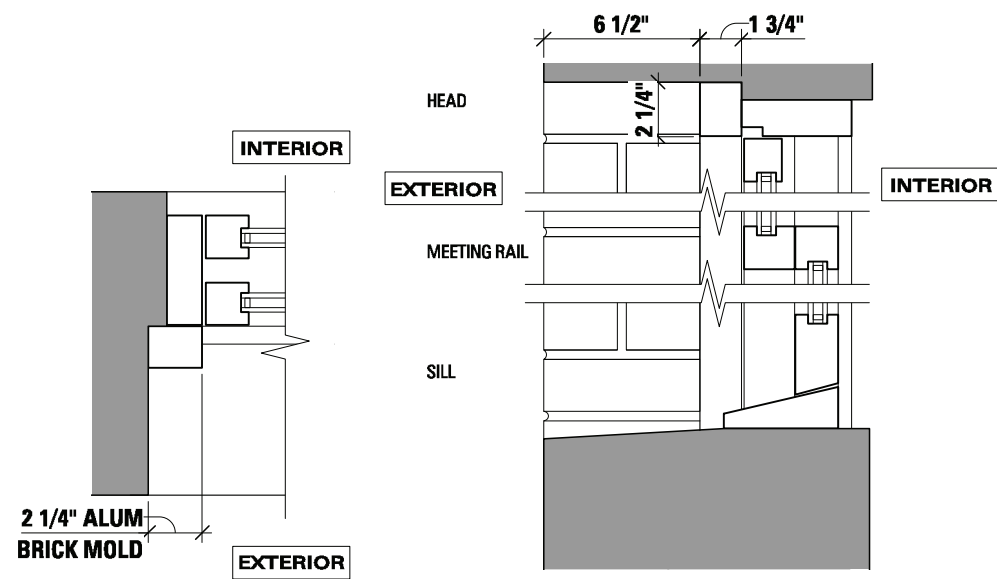
APPLICATION FOR
WINDOW REPLACEMENT
TO MATCH EXISTING:
1 OVER 1 DBL HUNG
WOOD CLAD UNITS

SHEET 7 OF 13



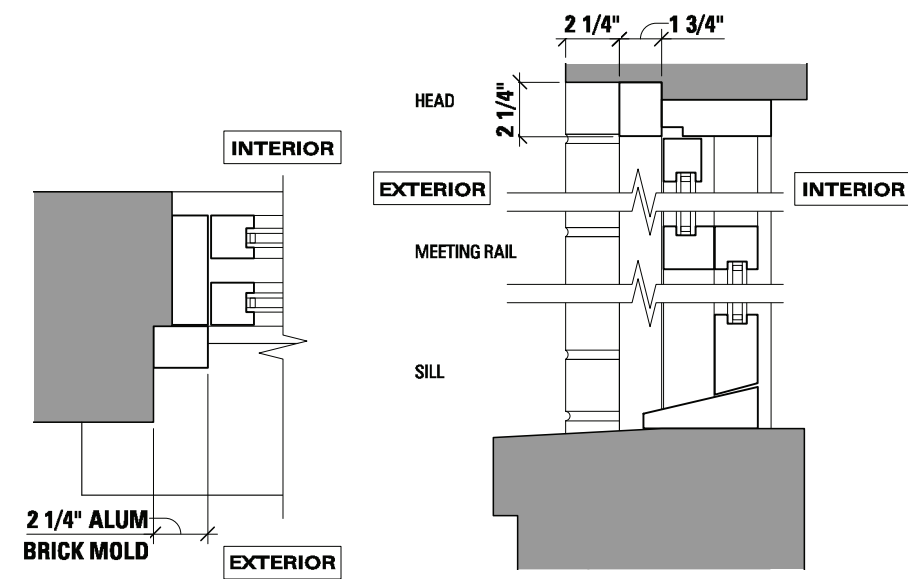
EX'G CONDITION
INTERIOR FACADE
SCALE 3/16" = 1'-0"

3



EX'G CONDITION
STREET FACADES
SCALE 3/16" = 1'-0"

2



EX'G CONDITION
INTERIOR FACADE
SCALE 1 1/2" = 1'-0"

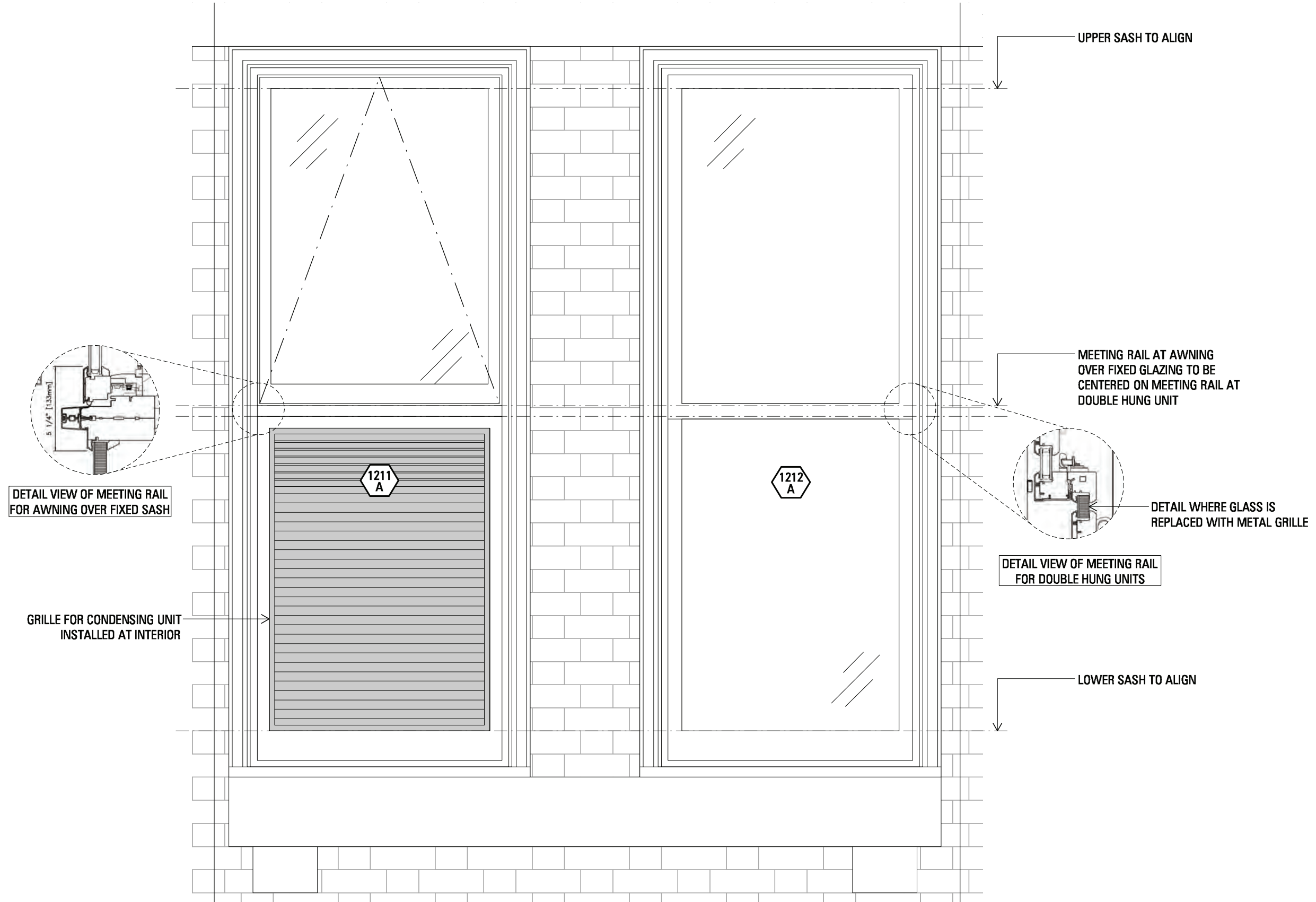
1

APPLICATION FOR
WINDOW REPLACEMENT
TO MATCH EXISTING:
1 OVER 1 DBL HUNG
WOOD CLAD UNITS

SHEET 8 OF 13

CWB ARCHITECTS

45 Main Street
Suite 824
Brooklyn, NY 11201



APPLICATION FOR
WINDOW REPLACEMENT
TO MATCH EXISTING:
1 OVER 1 DBL HUNG
WOOD CLAD UNITS



IMAGE KEY*

PROPOSED

- A - CONDENSING UNIT AT LOWER HALF OF WINDOW
- B - CONDENSING UNIT AT LOWER HALF OF WINDOW

EXISTING

- 01 - (2) CUs AT 6TH FLOOR WINDOW
- 02 - CU AT LOWER HALF OF WINDOW; 4TH FLR
- 03 - CU AT UPPER HALF OF WINDOW; 4TH FLR

6TH FLOOR: EXISTING
INSTALLATIONS

4TH FLOOR: EXISTING
INSTALLATIONS

771 WEST END AVENUE - 3D VIEW FROM WEST END AVENUE

APPLICATION FOR
WINDOW REPLACEMENT
TO MATCH EXISTING:
1 OVER 1 DBL HUNG
WOOD CLAD UNITS

SHEET 10 OF 13

CWB ARCHITECTS

45 Main Street
Suite 824
Brooklyn, NY 11201



01 - (2) CONDENSING UNITS AT 6TH FLOOR WINDOW; FULL WINDOW



02 - CONDENSING UNIT AT 4TH FLOOR WINDOW; LOWER HALF WITH DOUBLE HUNG ABOVE



03 - CONDENSING UNITS AT 4TH FLOOR WINDOW; UPPER HALF WITH DOUBLE HUNG BELOW

APPLICATION FOR
WINDOW REPLACEMENT
TO MATCH EXISTING:
1 OVER 1 DBL HUNG
WOOD CLAD UNITS

SHEET 11 OF 13

CWB ARCHITECTS

45 Main Street
Suite 824
Brooklyn, NY 11201



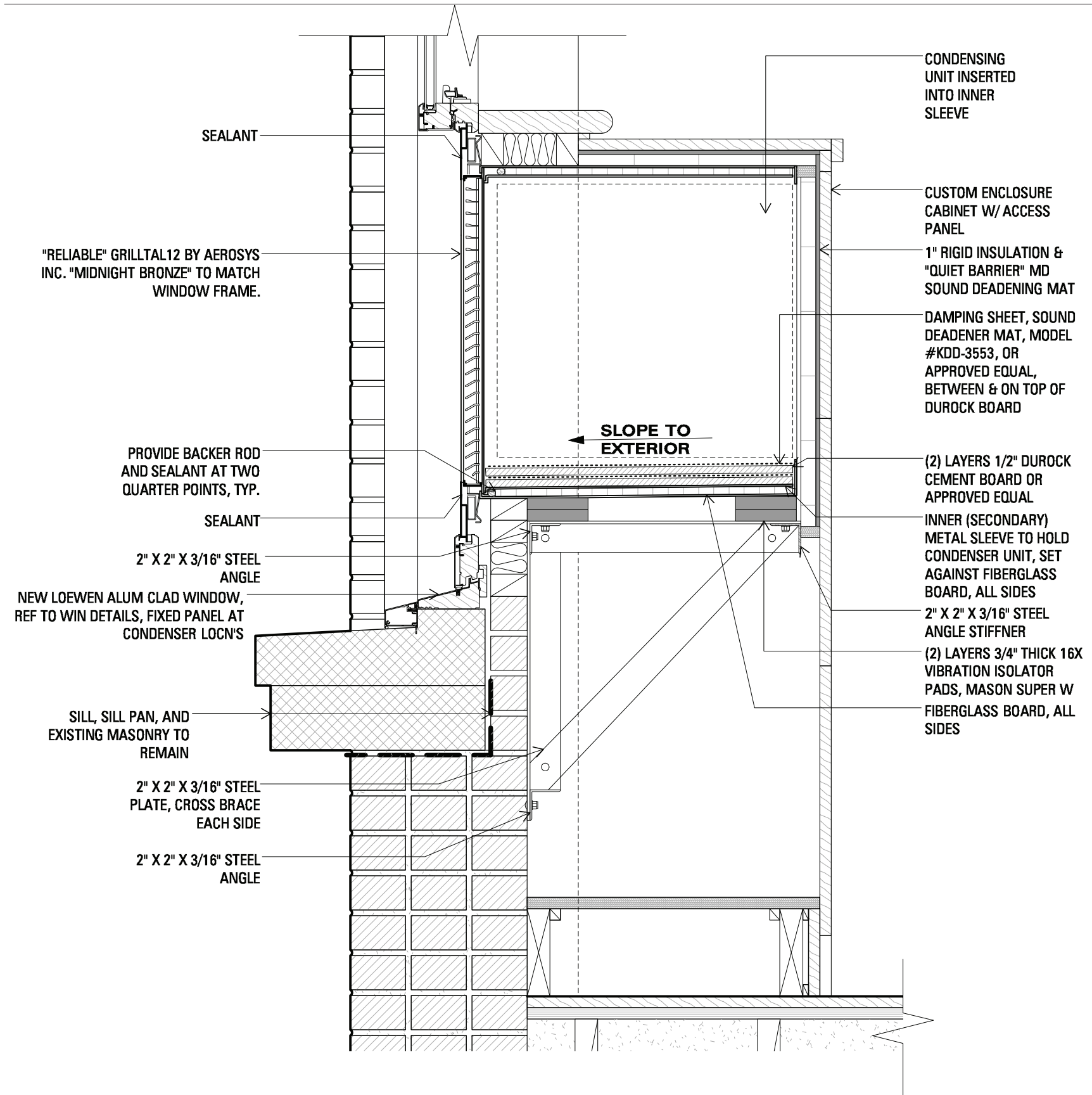
A - CONDENSING UNIT AT LOWER HALF OF WINDOW WITH AWNING UNIT ABOVE
B - CONDENSING UNIT AT LOWER HALF OF WINDOW WITH DOUBLE HUNG ABOVE TO MATCH 4TH FLR INSTALLATION

APPLICATION FOR
WINDOW REPLACEMENT
TO MATCH EXISTING:
1 OVER 1 DBL HUNG
WOOD CLAD UNITS

SHEET 12 OF 13

CWB ARCHITECTS

45 Main Street
Suite 824
Brooklyn, NY 11201



**TYPICAL THRU-WINDOW
SOUND SLEEVE DETAIL**
SCALE 1 1/2" = 1'-0"

1

APPLICATION FOR
WINDOW REPLACEMENT
TO MATCH EXISTING:
1 OVER 1 DBL HUNG
WOOD CLAD UNITS

SHEET 13 OF 13

CWB ARCHITECTS

45 Main Street
Suite 824
Brooklyn, NY 11201