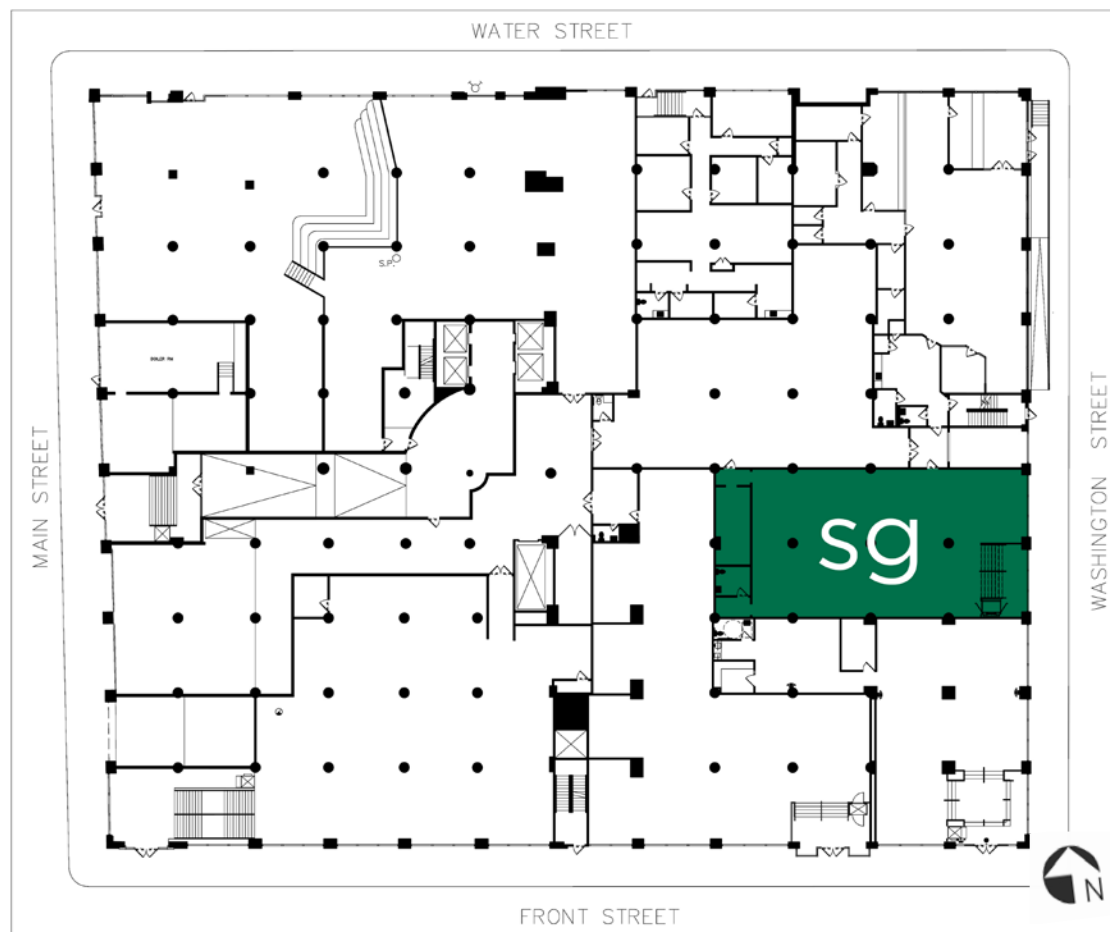


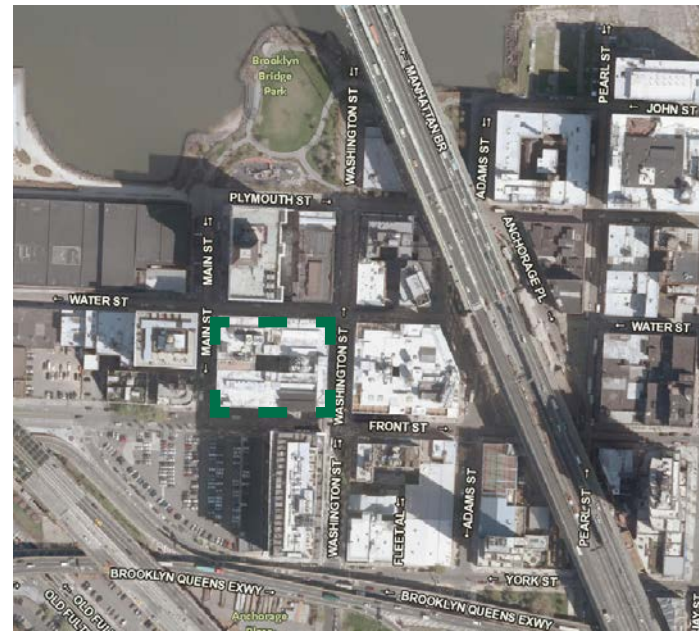
LANDMARKS PRESENTATION SET | FEBRUARY 21, 2017



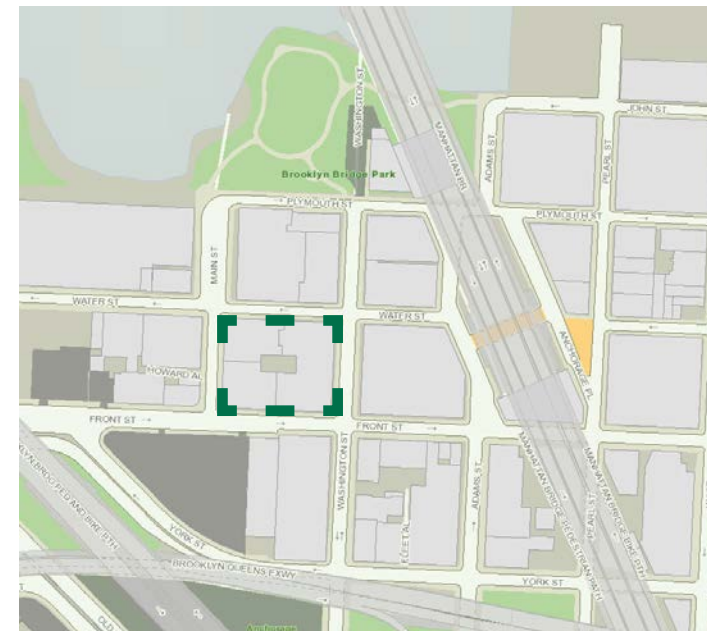
sweetgreen DUMBO
50 Washington Street, Brooklyn, NY 11201



ADDRESS: 50 WASHINGTON STREET
 BROOKLYN, NY 11201
 BLOCK: 37
 LOT: 1
 MAP #: 12D
 ZONING: M1-2/R8A
 BLDG NAME: GAIR NO. 6
 STYLE: INDUSTRIAL NEO-CLASSICAL
 CONSTRUCTION: REINFORCED CONCRETE



50 WASHINGTON ST - AERIAL PLAN - SATELLITE



50 WASHINGTON ST - AERIAL PLAN



NW CORNER FROM WATER & MAIN
(NYC DEPARTMENT OF TAXES - 1939)



NE CORNER FROM WASHINGTON & WATER

sweetgreen DUMBO

LANDMARKS PRESENTATION SET | FEBRUARY 21, 2017

LOCATION AND SITE CONTEXT

EXISTING STOREFRONT - SCOPE OF WORK

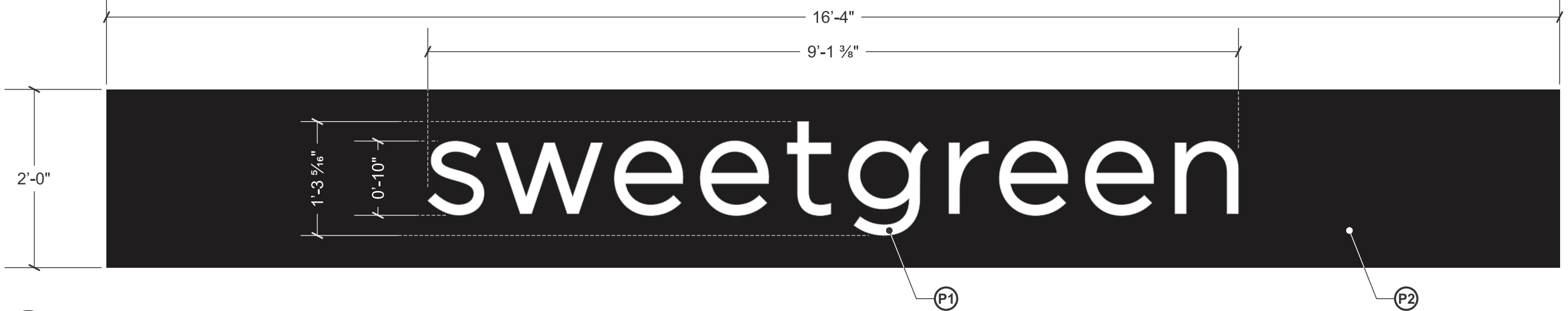
- 1. REMOVE EXISTING SIGNAGE OVER ENTRY DOOR**
-PATCH AND REPAIR EXISTING STOREFRONT AS REQUIRED DURING REMOVAL
- 2. REMOVE EXISTING (2) BLADE SIGNS ON EXISTING BUILDING FACADE**
-PATCH AND REPAIR BUILDING FACADE AS REQUIRED DURING REMOVAL TO MATCH EXISTING CONDITION
- 3. REMOVE EXISTING SIGNAGE OVER DELIVERY DOOR**
-PATCH AND REPAIR TRANSOME TO MATCH EXISTING ADJACENT BUILDING FACADE AS REQUIRED.



PROPOSED STOREFRONT - SCOPE OF WORK

- 1. NEW “FAUX” LOUVER PANEL**
INSTALLED OVER EXISTING STOREFRONT.
-FABRICATED TO MATCH ADJACENT EXISTING LOUVER PROFILE AND COLOR
- 2. NEW ALUMINUM SIGN BAND WITH HALO-LIT PIN LETTERS.**
INSTALLED OVER EXISTING STOREFRONT SYSTEM.
-FABRICATED TO MATCH EXISTING STOREFRONT FINISH AND COLOR.
- 3. NEW ILLUMINATED PROJECTING BLADE SIGN.**
INSTALLED ON EXISTING BUILDING FACADE.
-PATCH AND REPAIR FACADE AS NECESSARY TO MATCH EXISTING CONDITION





1 CHANNEL LETTER ELEVATION
3.0 SCALE: 3/4" = 1'-0"

SPECIFICATIONS FOR HALO ILLUMINATED S/F REVERSE PAN CHANNEL LETTERS

REVERSE PAN CHANNEL LETTERS

LETTER TYPE= Halo lit Reverse pan channel letters

DEPTH= 2"

BACKS= .150" white polycarbonate

RETURNS= .040" Pre-finished White aluminum (w/ weep holes)

ILLUMINATION= GE Tetra miniMax White LEDs

MOUNTING= Mount to fascia w/ 1 1/2" stand-offs & #10-24 x 3" screws (4 per letter)

SIGN BAND (1 SIGN BAND WITH REVERSE PC LETTERS & 1 INTERIOR SIGN BAND)

DEPTH= 1 1/8"

FACE= 1/4" aluminum panel with paint finish, versalok to frame

MOUNTING= 3/8" min. hardware through face/frame as req.

ELECTRICAL

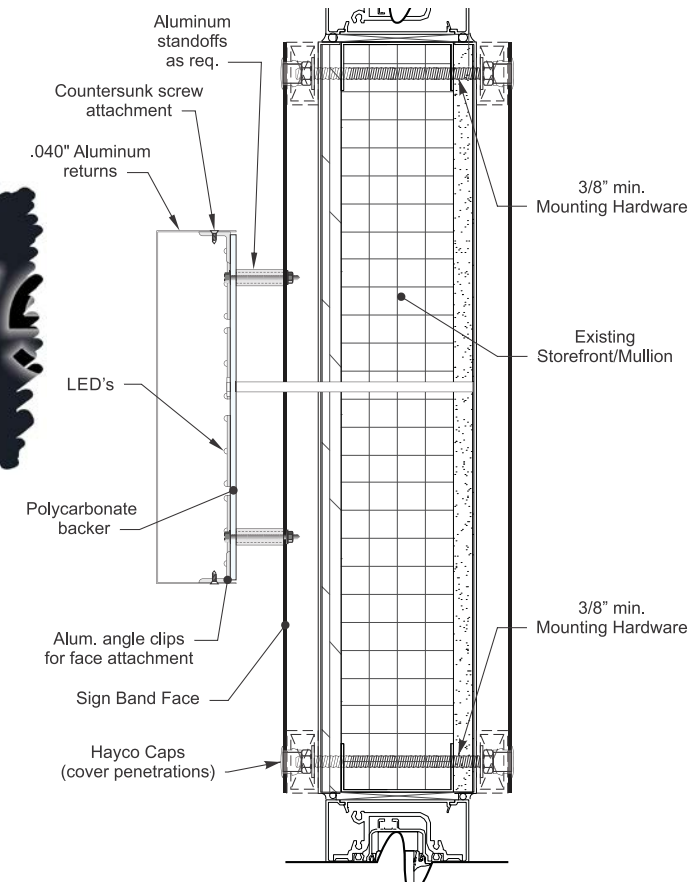
PRIMARY=120V electrical to sign & final hook up by others

SECONDARY= 12V LED wire leads jumped behind fascia. 12V LED controllers in remote mounted raceway as req.

POWER DISCONNECT= Toggle switch on end of remote mounted raceway



SIGNAGE DURING DAY



sweetgreen DUMBO

LANDMARKS PRESENTATION SET | FEBRUARY 21, 2017

DETAILS: SIGN BAND + HALO-LIT LETTERS



SIGNAGE DURING DAY



AT NIGHT

SPECIFICATIONS FOR (1) ILLUMINATED D/F PROJECTING SIGNS

CABINET= 3/4" Alum. sq. tube w/ .090" alum. skins

CAPS= 1" x 2" Alum. rec. tube w/ .090" alum. skins

GRAPHICS= 10 MM exposed White neon (*Visually match color temp to LED lighting-4500K to 5000K*)

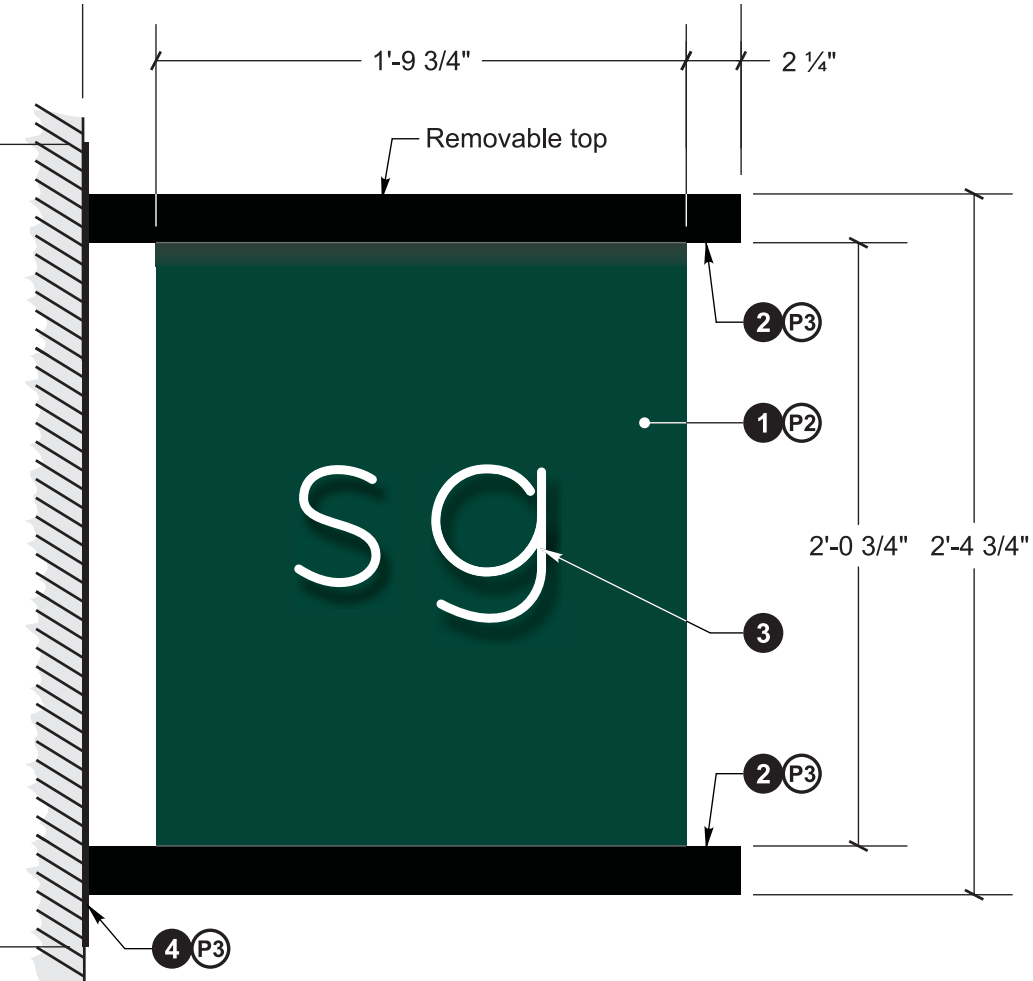
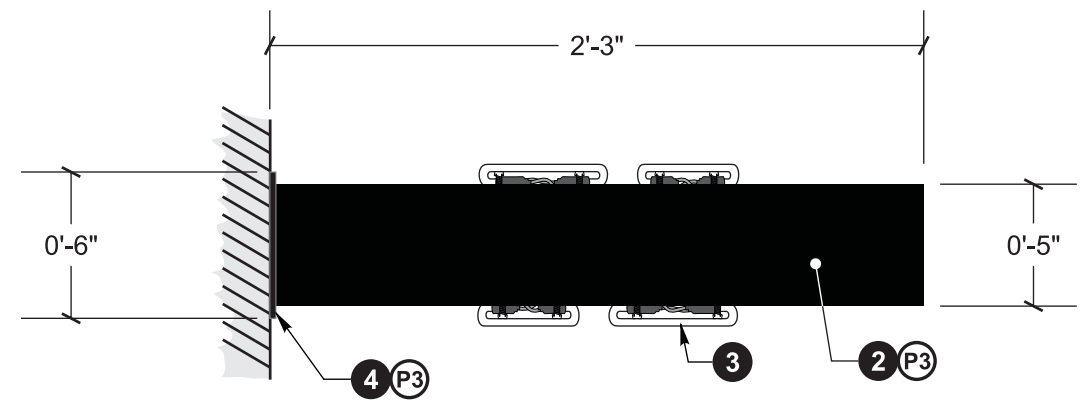
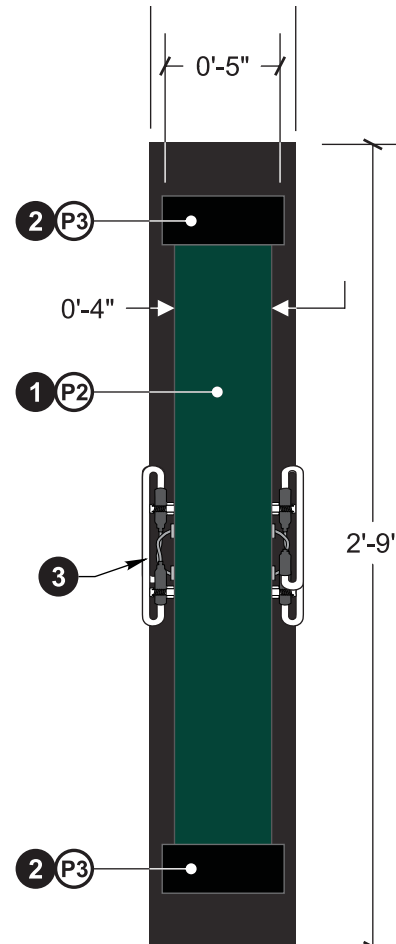
ILLUMINATION= See "GRAPHICS"

MOUNTING PLATE= 1/4" Aluminum plate

ATTACHMENT= Flat head fasteners, P.T.M. armature

PRIMARY ELECTRICAL= 120V electrical to sign and final hook up is by others. Exact power-out details **TBD**

SECONDARY ELECTRICAL= Neon transformer mounted inside cabinet



sweetgreen DUMBO

LANDMARKS PRESENTATION SET | FEBRUARY 21, 2017

DETAILS: ILLUMINATED BLADE SIGN



60 WATER ST



50 WASHINGTON ST



NE OF MAIN ST & FRONT ST



45 WATER ST



117 FRONT ST



55 WATER ST

sweetgreen DUMBO

LANDMARKS PRESENTATION SET | FEBRUARY 21, 2017

SIMILAR SIGNAGE AROUND DUMBO



sweetgreen DUMBO

LANDMARKS PRESENTATION SET | FEBRUARY 21, 2017

SWEETGREEN SIGNAGE EXAMPLES