

# 80 White St

## Amendment to COFA #18-2611 Modification of Approved Cortlandt Alley Windows



# 80 White St – Approved Windows



- Approved LPC drawings. Amended windows highlighted.

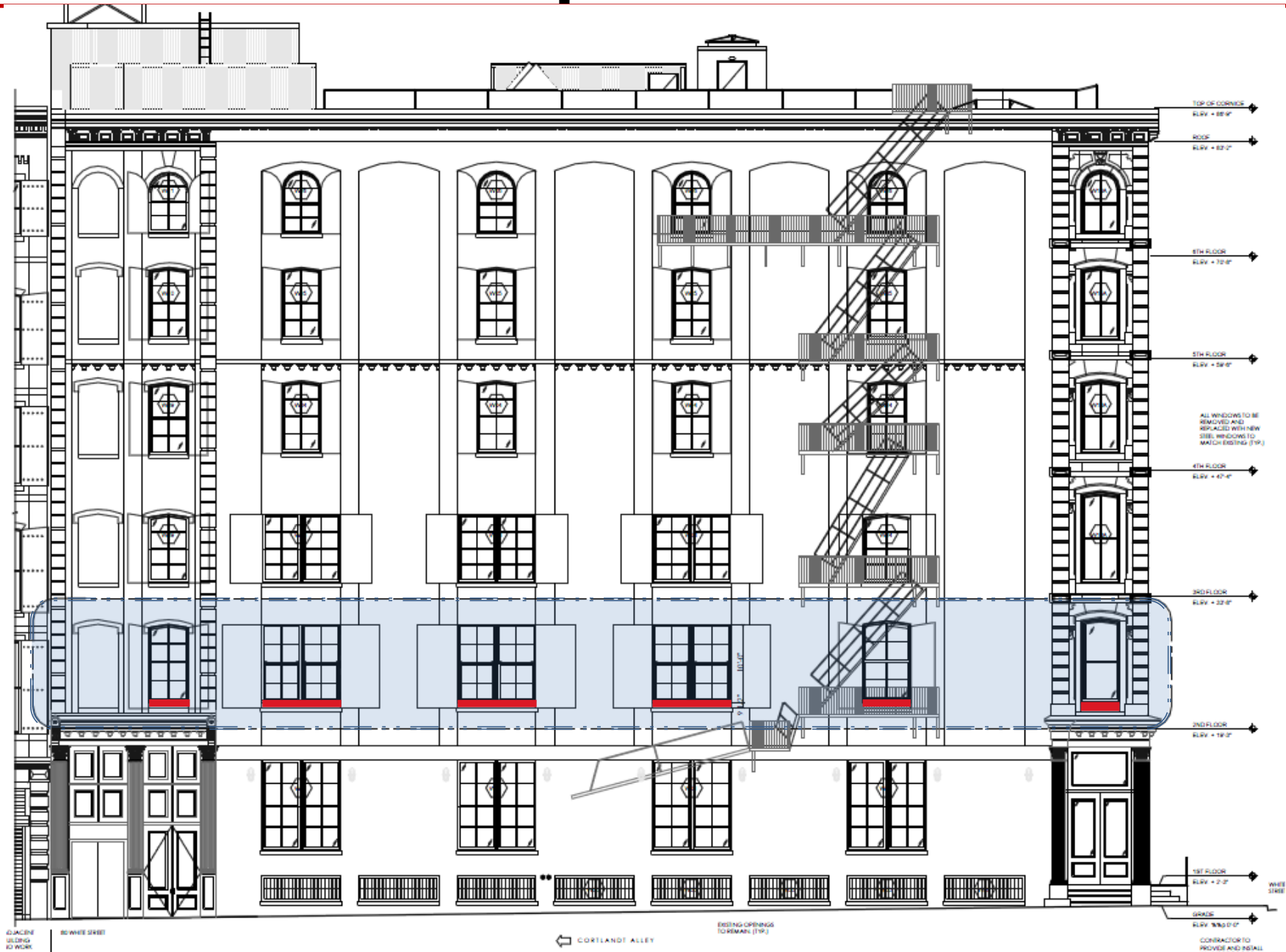
**FSI ARCHITECTURE PC**

PROJECT NAME: 80 White St, NEW YORK, NY 10013  
RE: LPC PRESENTATION

PROJECT NO:  
RE:

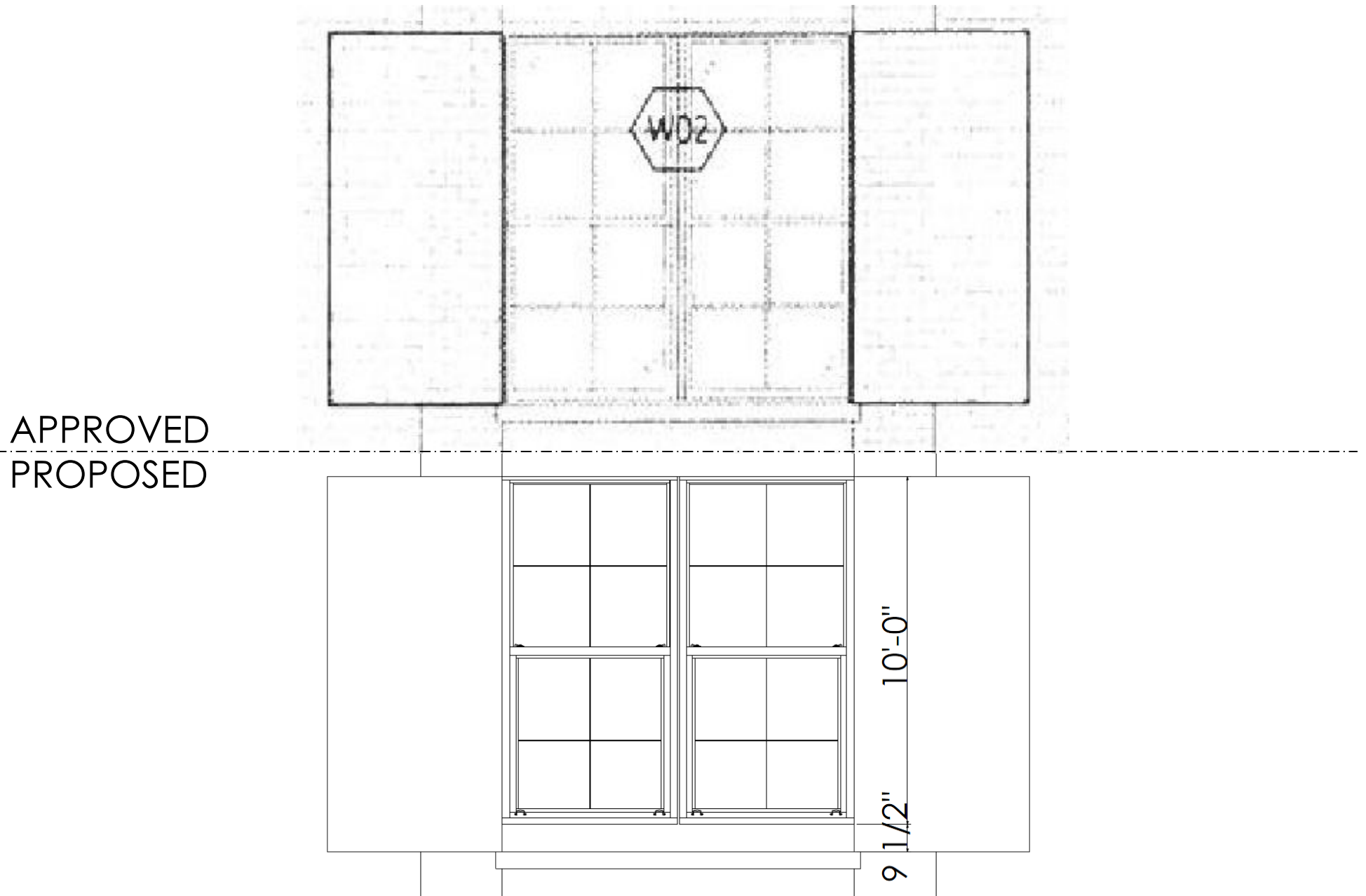
410127.1  
January 10<sup>th</sup>, 2016

# 80 White St – Proposed Windows



- Amended drawings with gap filler for max. 10' tall steel fire-rated windows.
  - DOB requires fire-rated steel windows for this façade due to lot-line condition.

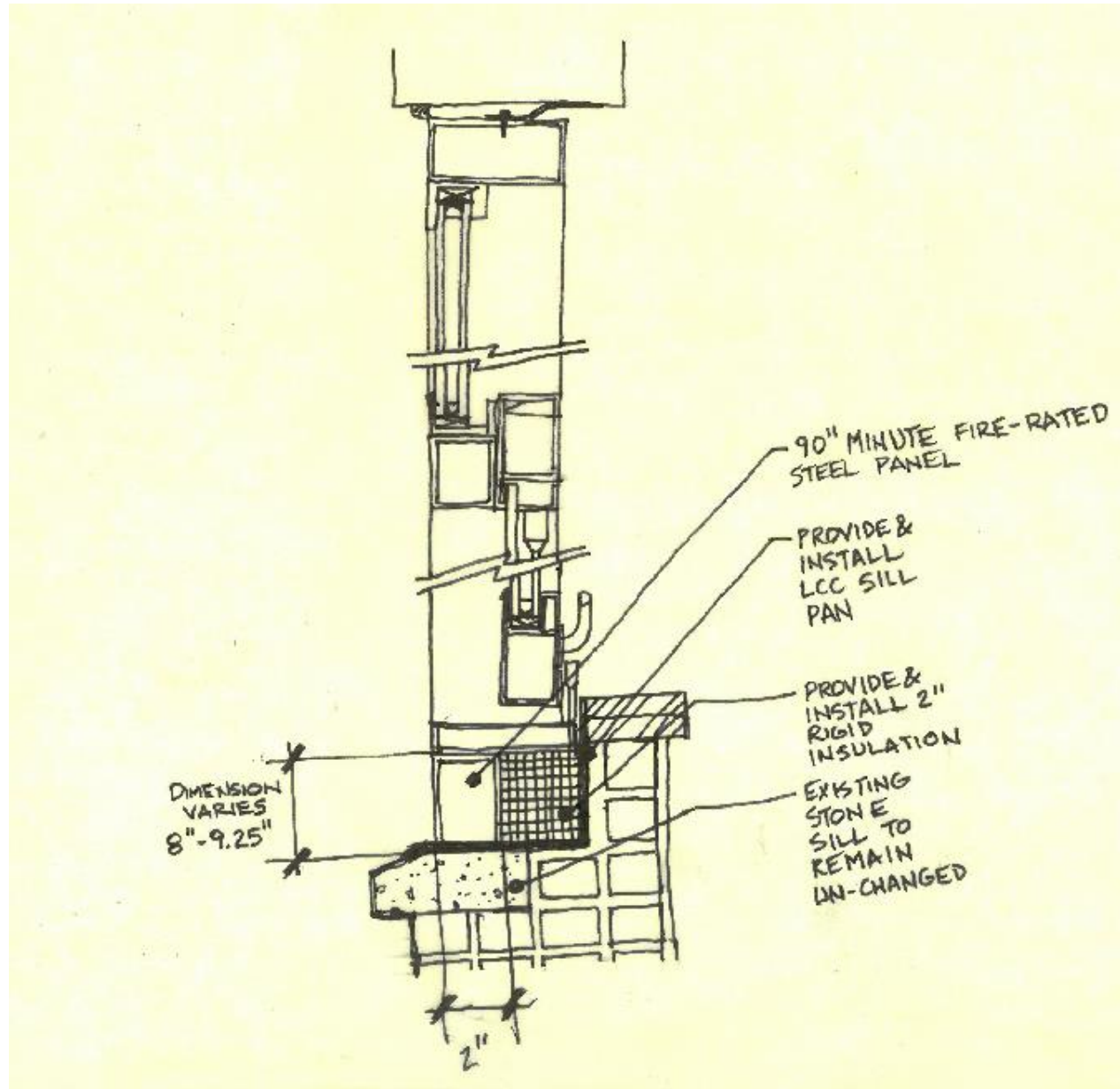
# 80 White St – Approved and Proposed



- Gap filler to be painted same black as window frame.
- Keeping sill height the same preserves historical and horizontal continuity



# 80 White St – Proposed Details



- Designed to maintain both thermal and fire ratings, while reducing visual impact.



# 80 White St – Current Conditions

## Construction Underway - Cortlandt Alley Windows



**FSI ARCHITECTURE PC**

PROJECT NAME: 80 White St, NEW YORK, NY 10013  
RE: LPC PRESENTATION

PROJECT NO: 410127.1  
RE: January 10<sup>th</sup>, 2016



# Mock-Up: Window Gap Filler





# Mock-Up: Window Gap Filler



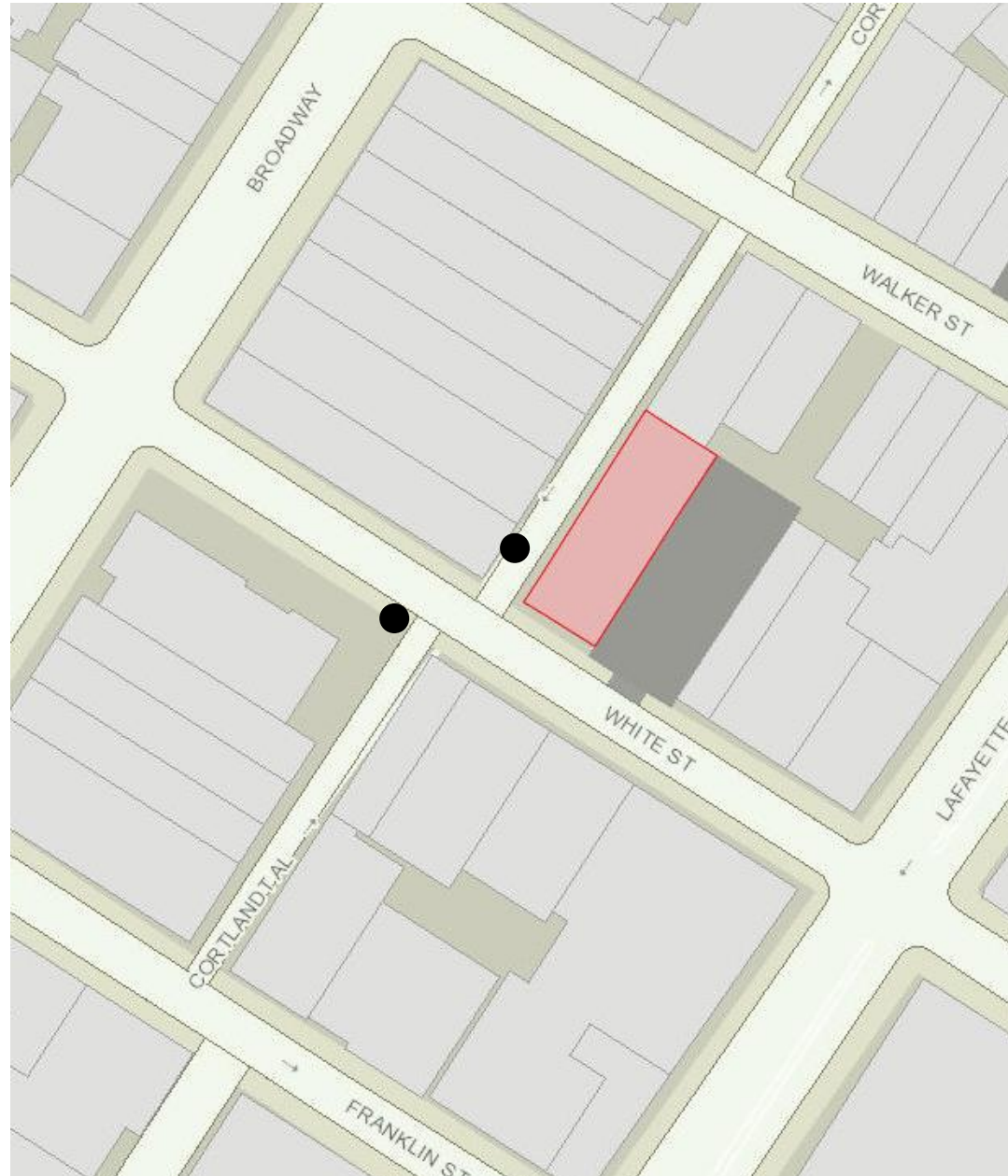


# Mock-Up: Window Gap Filler



# 80 White St – Mockup Visibility

## Mock-Up - Photos Locations





# Window Gap Filler

**Photo 1** – Looking NE on Cortlandt towards 80 White St – **Prior to Construction**



**FSI ARCHITECTURE PC**

PROJECT NAME: 80 White St, NEW YORK, NY 10013  
RE: LPC PRESENTATION

PROJECT NO: 410127.1  
RE: January 10<sup>th</sup>, 2016



# Window Gap Filler

**Mock-Up 2 – Looking NE on Cortlandt towards 80 White St – Corner and 2<sup>nd</sup> Floor Window Replacements**



**FSI ARCHITECTURE PC**

PROJECT NAME: 80 White St, NEW YORK, NY 10013  
RE: LPC PRESENTATION



Note: Mock-up only specifies dimensions and does not accurately reflect how light will interact with the window.

PROJECT NO: 410127.1  
RE: January 10<sup>th</sup>, 2016



# Window Gap Filler

## Mock-Up 3 – Looking NE on Cortlandt towards 80 White St – Window Gap Filler Highlighted



**FSI ARCHITECTURE PC**

PROJECT NAME: 80 White St, NEW YORK, NY 10013  
RE: LPC PRESENTATION

Note: Mock-up only specifies dimensions and does not accurately reflect how light will interact with the window.

PROJECT NO: 410127.1  
RE: January 10<sup>th</sup>, 2016



# Window Gap Filler

**Photo 2** – Looking NE on Cortlandt towards Walker St



**FSI ARCHITECTURE PC**

PROJECT NAME: 80 White St, NEW YORK, NY 10013  
RE: LPC PRESENTATION

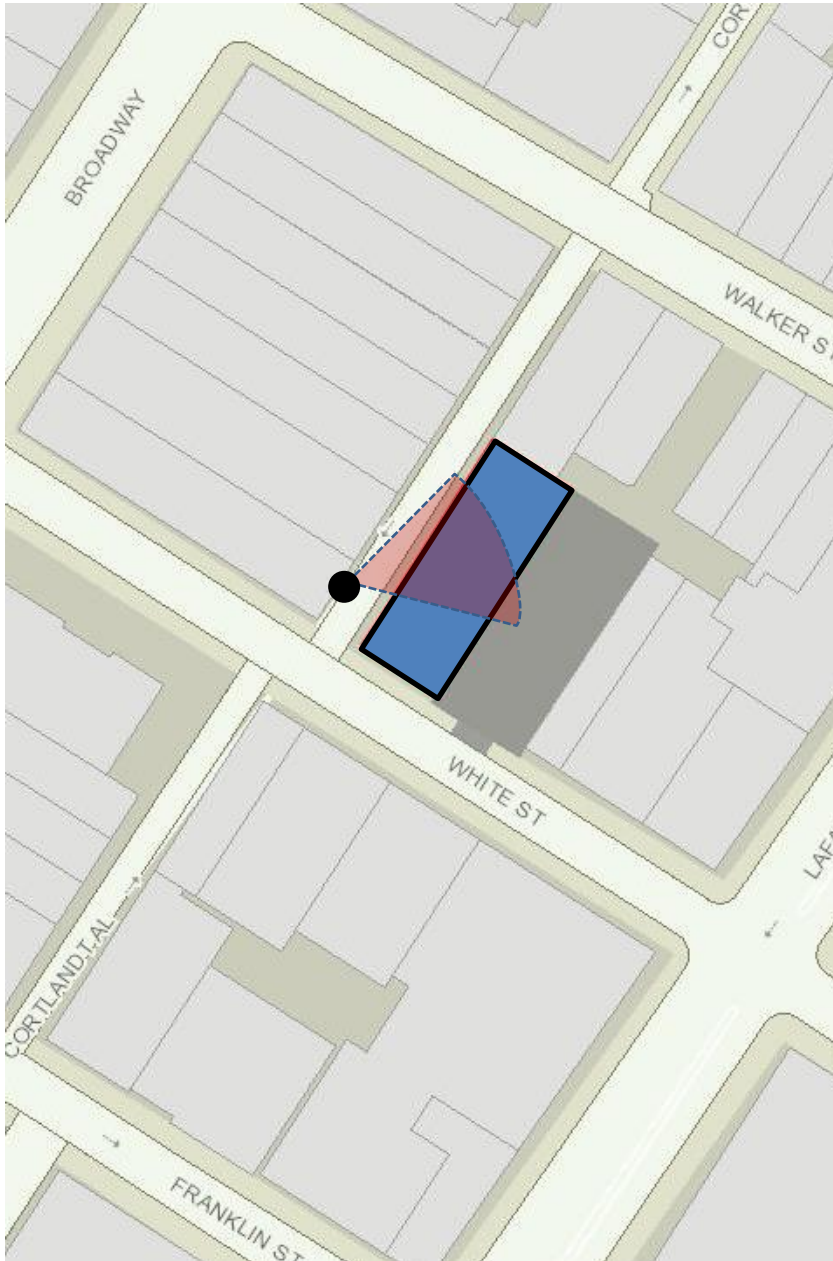
PROJECT NO:  
RE:

410127.1  
January 10<sup>th</sup>, 2016



# Window Gap Filler

## Mock-Up 4 – Looking NE on Cortlandt towards Walker St- Estimated Appearance



**FSI ARCHITECTURE PC**

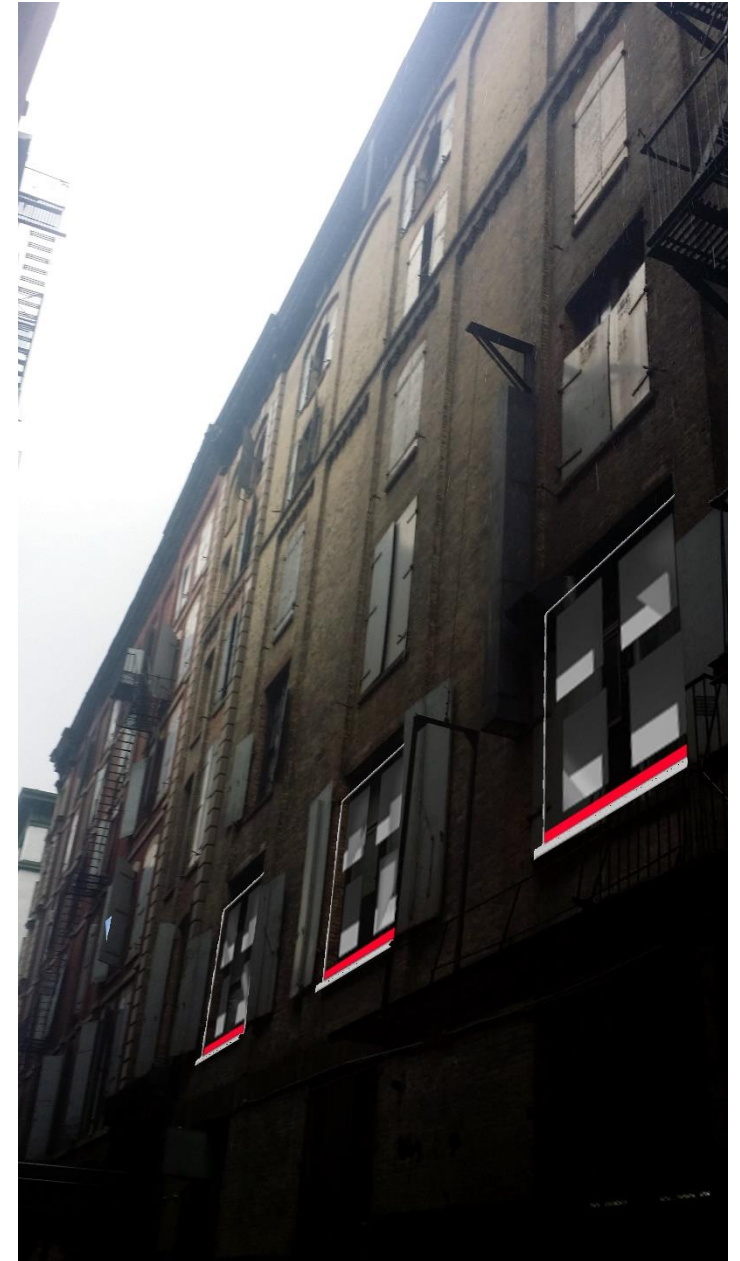
PROJECT NAME: 80 White St, NEW YORK, NY 10013  
RE: LPC PRESENTATION

Note: Mock-up only specifies dimensions and does not accurately reflect how light will interact with the window.

PROJECT NO: 410127.1  
RE: January 10<sup>th</sup>, 2016

# Window Gap Filler

## Mock-Up 4 – Looking NE on Cortlandt towards Walker St- Exaggerated Appearance



**FSI ARCHITECTURE PC**

PROJECT NAME: 80 White St, NEW YORK, NY 10013  
RE: LPC PRESENTATION

Note: Mock-up only specifies dimensions and does not accurately reflect how light will interact with the window.

PROJECT NO: 410127.1  
RE: January 10<sup>th</sup>, 2016