

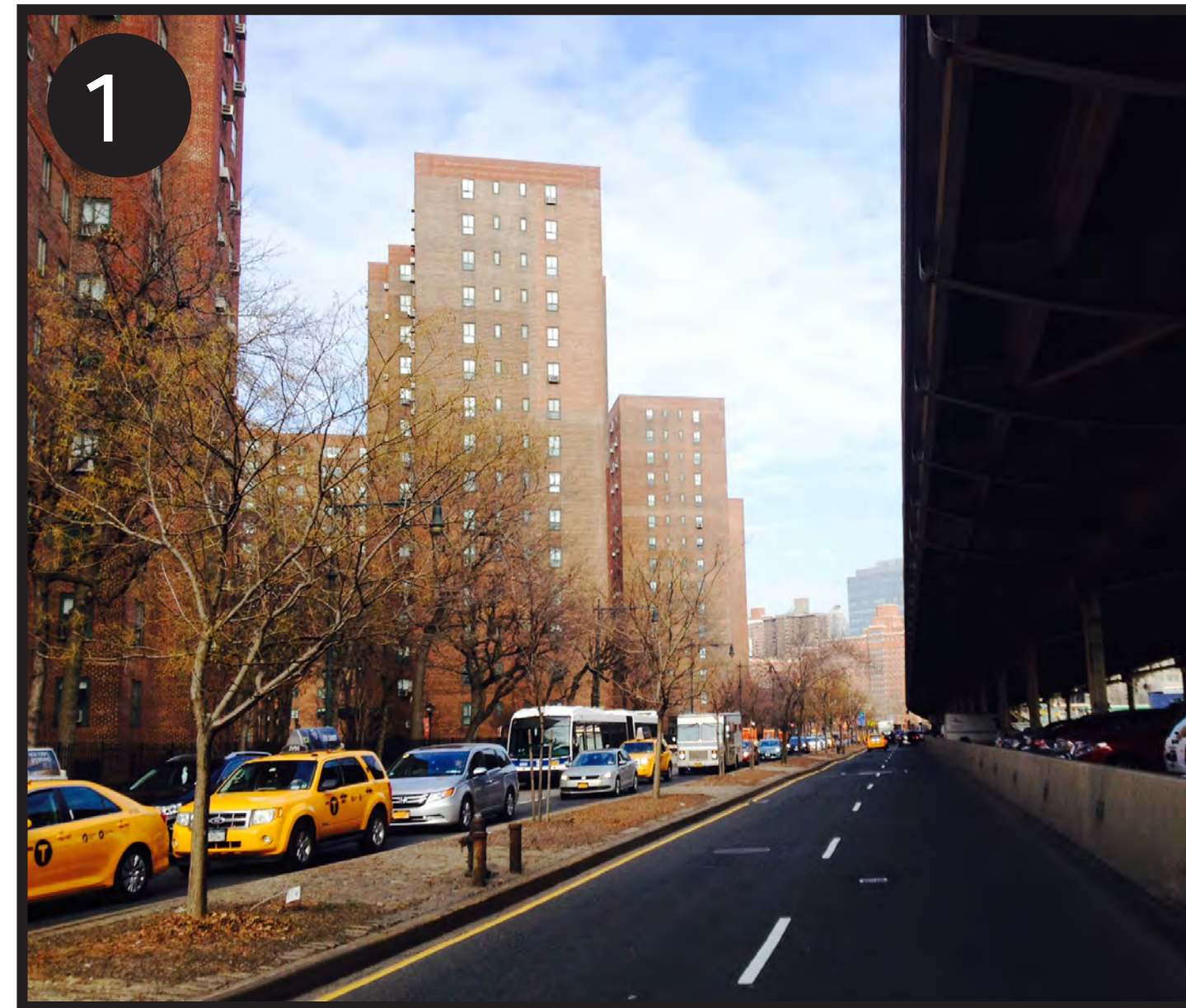
FLOOD PROTECTION TYPES



Project Area 2

FLOOD PROTECTION TYPES IN STUYVESANT COVE

Existing Conditions



Avenue C



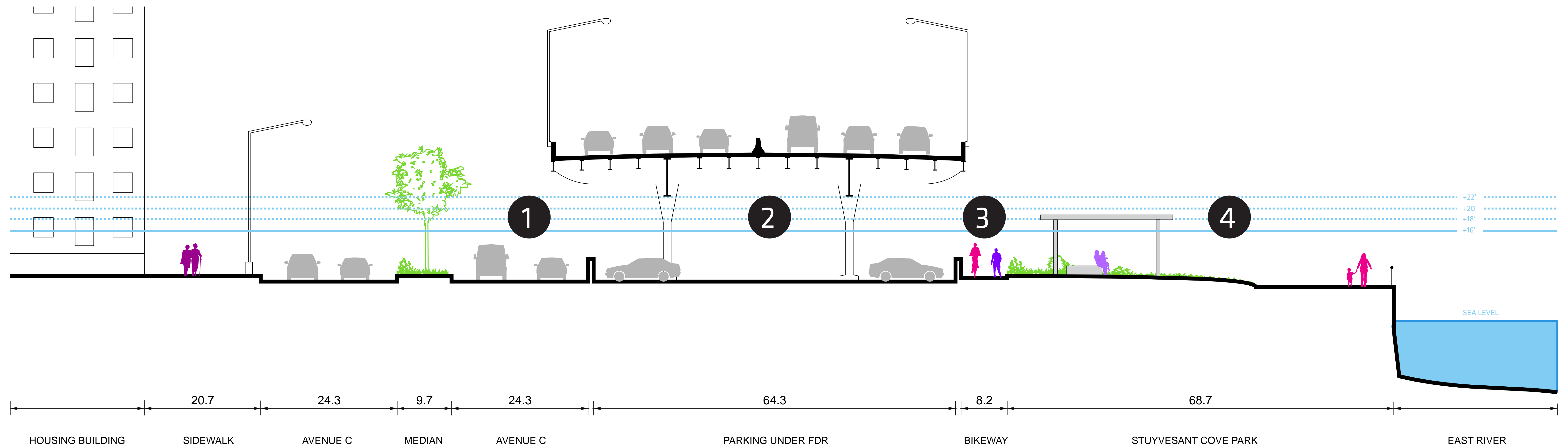
Under the FDR Drive



Stuyvesant Cove Park bike path



Stuyvesant Cove Park

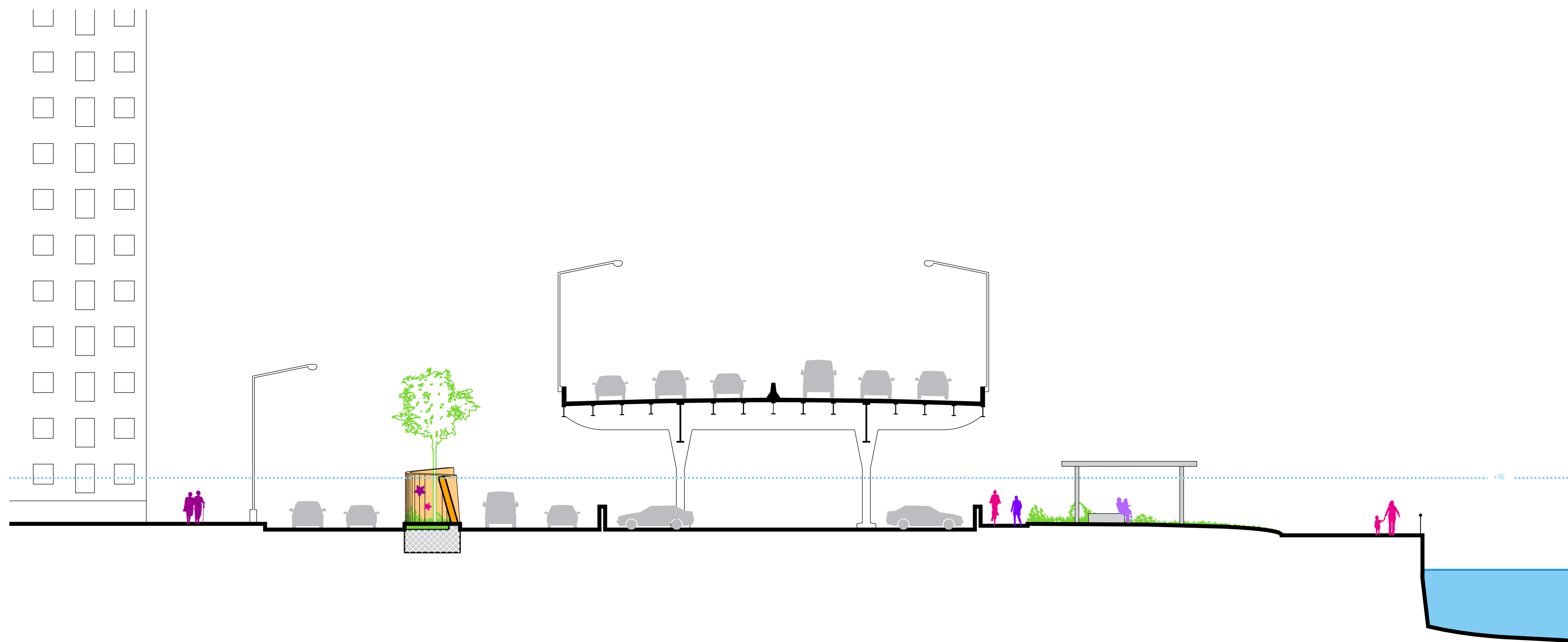


FLOOD PROTECTION TYPES IN STUYVESANT COVE

1 ALONG THE MEDIAN

1a. Wiggle Wall

1b. Flip-down Canopy



a. Open/Storm position

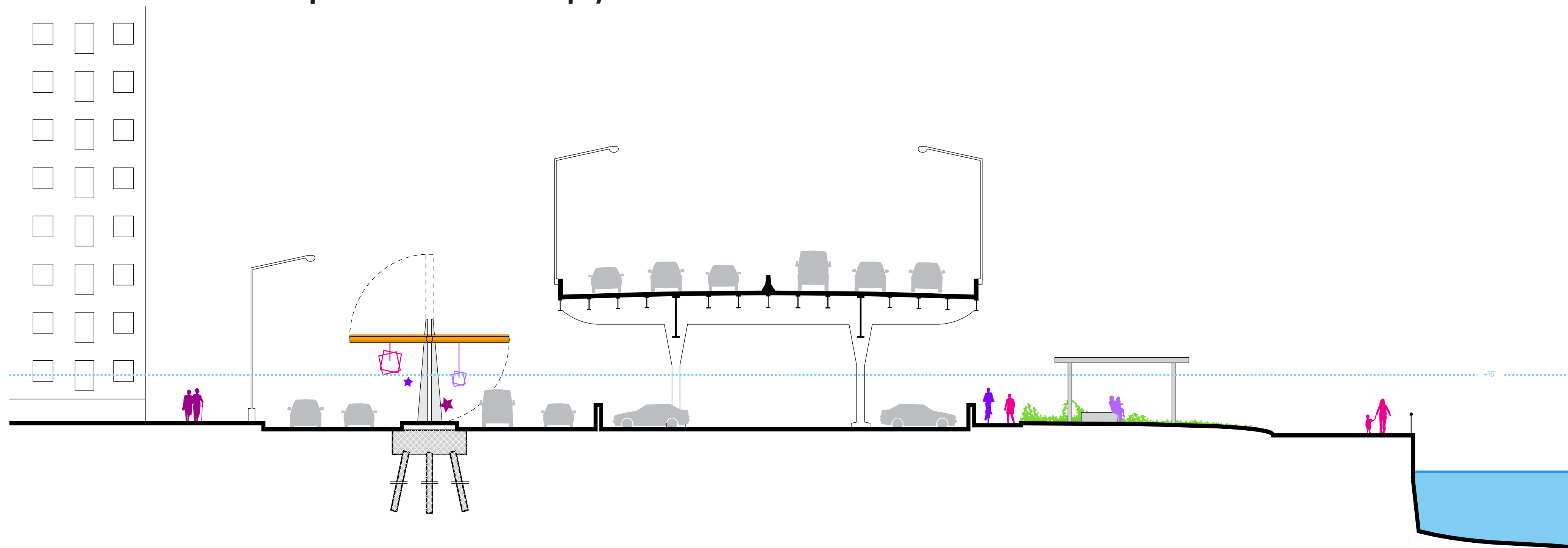
(The Wiggle Wall would not change position in the event of a storm)

FLOOD PROTECTION TYPES IN STUYVESANT COVE

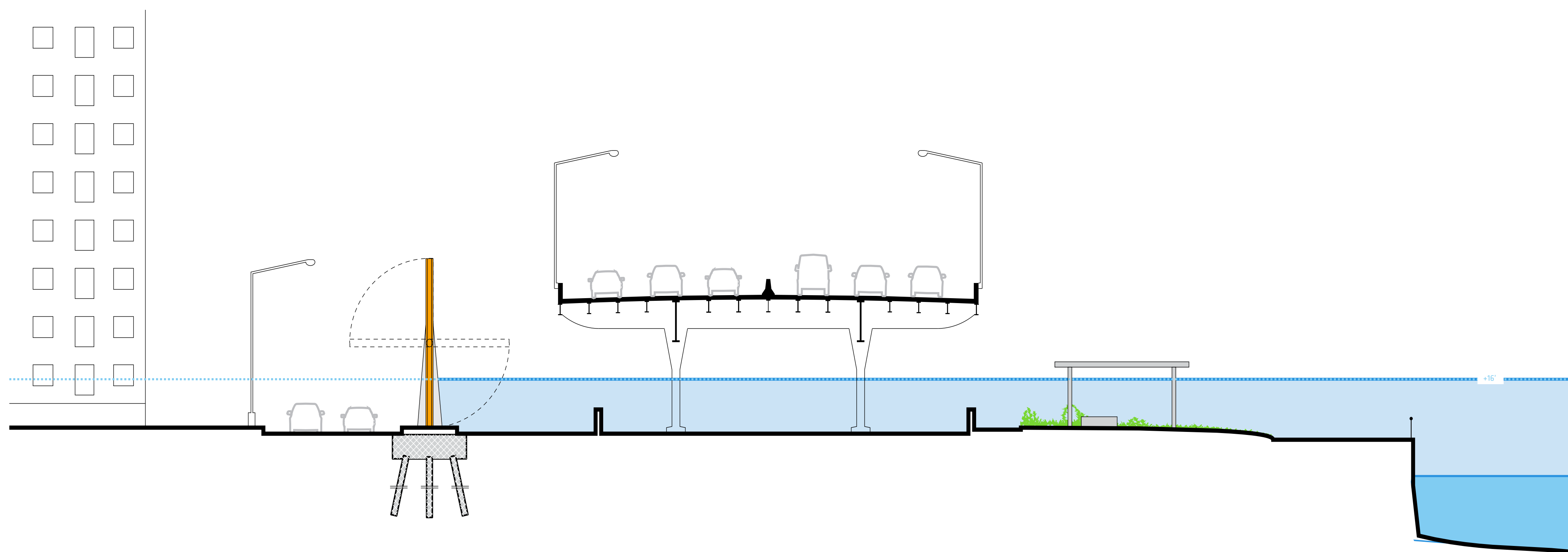
1 ALONG THE MEDIAN

1a. Wiggle Wall

1b. Flip-down Canopy



a. Open position



b. Storm position

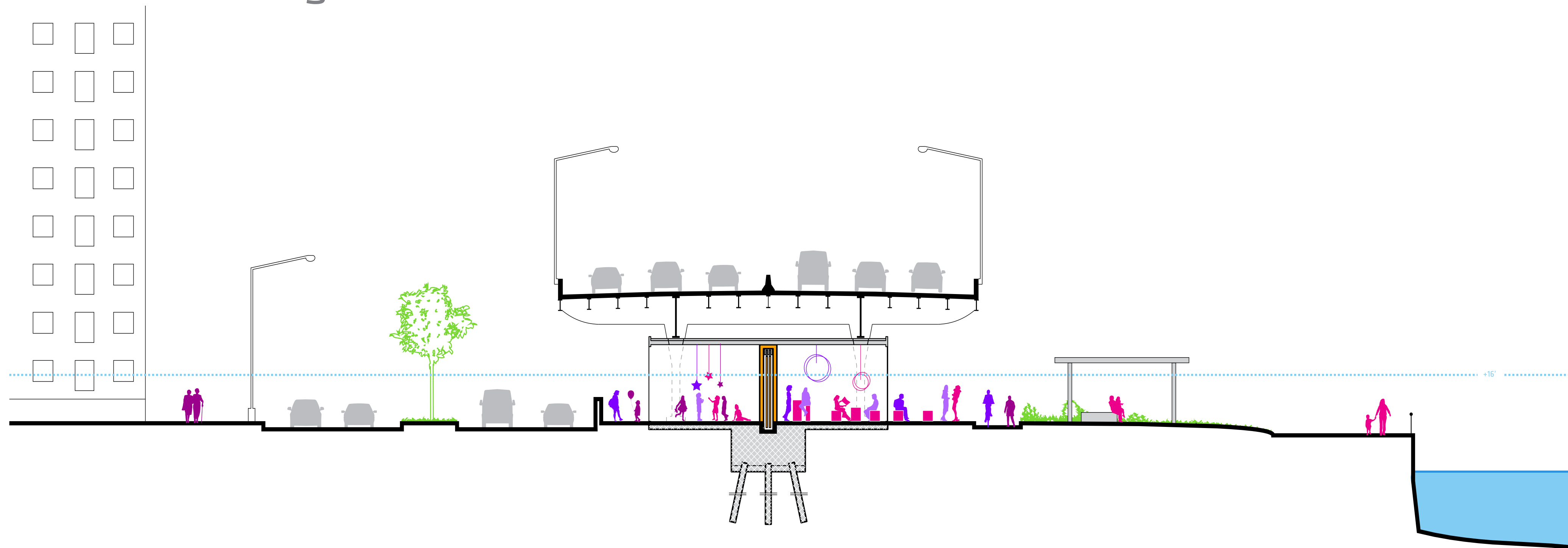


FLOOD PROTECTION TYPES IN STUYVESANT COVE

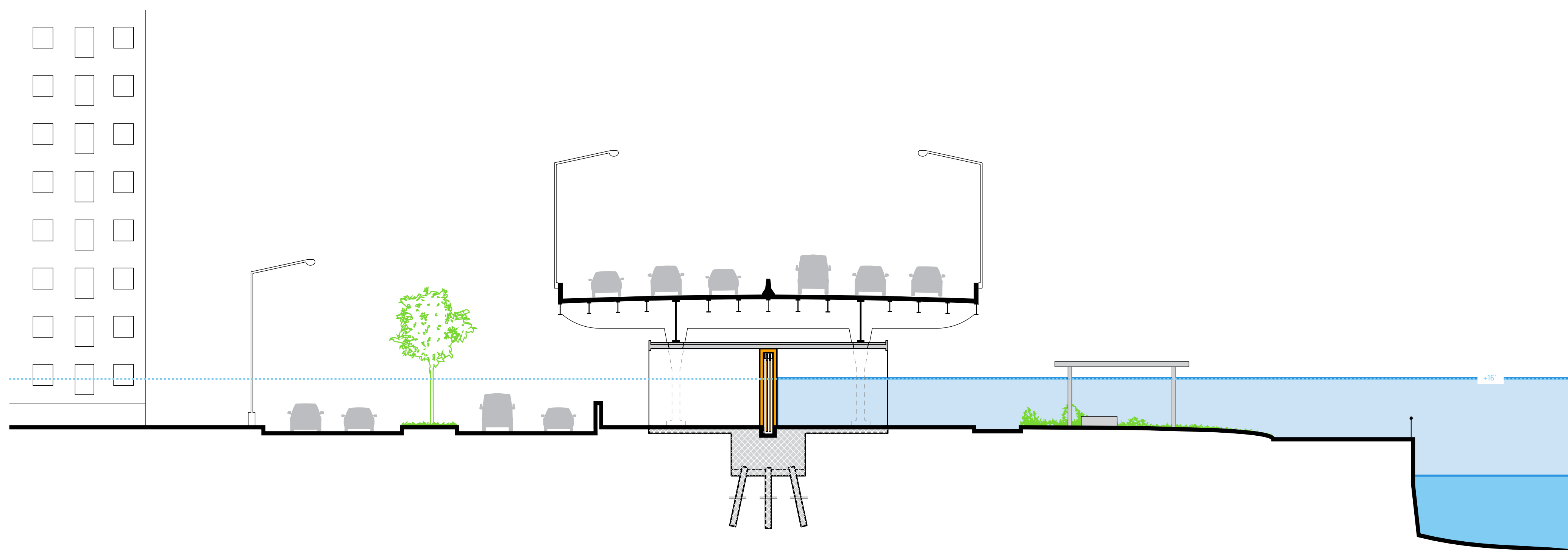
2 UNDER THE FDR DRIVE

2a. Protective Pavilions

2b. Big Bench



a. Open position



b. Storm position

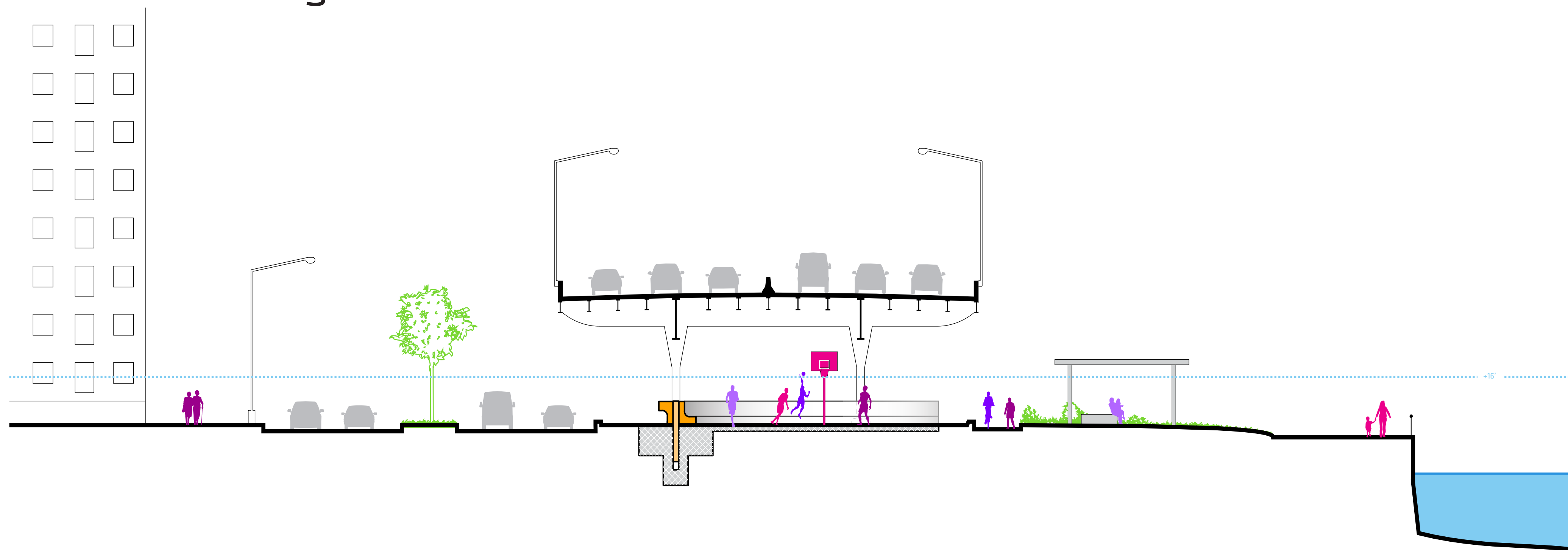


FLOOD PROTECTION TYPES IN STUYVESANT COVE

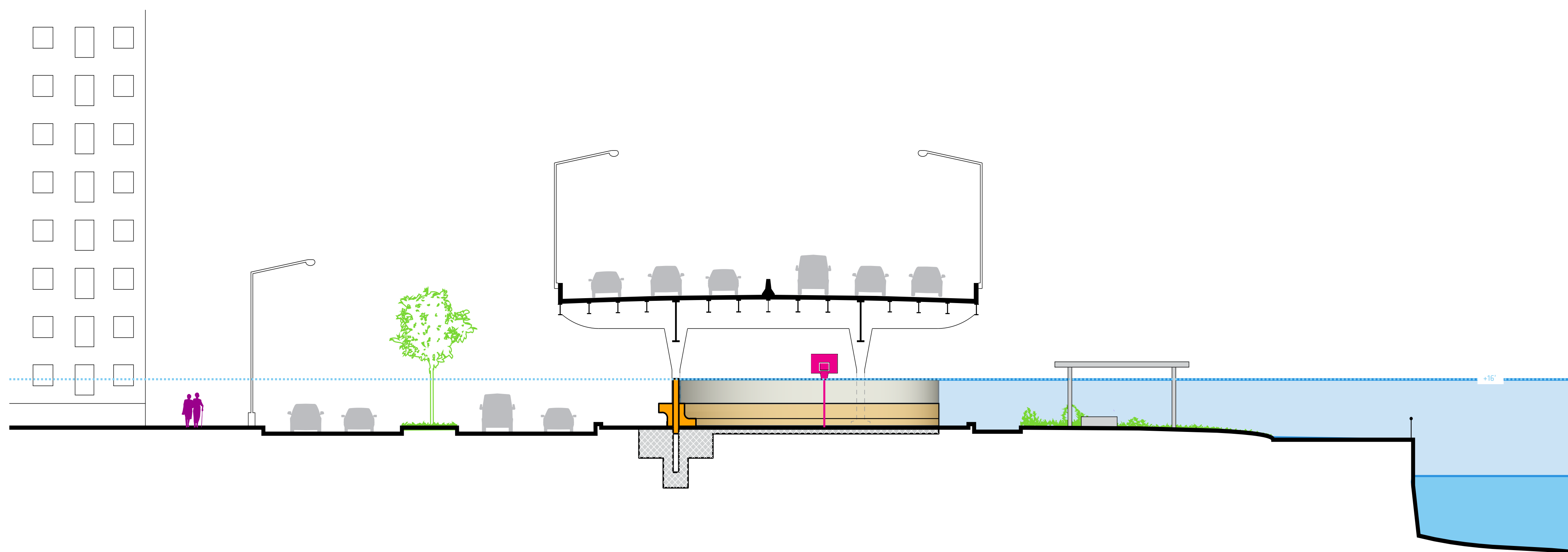
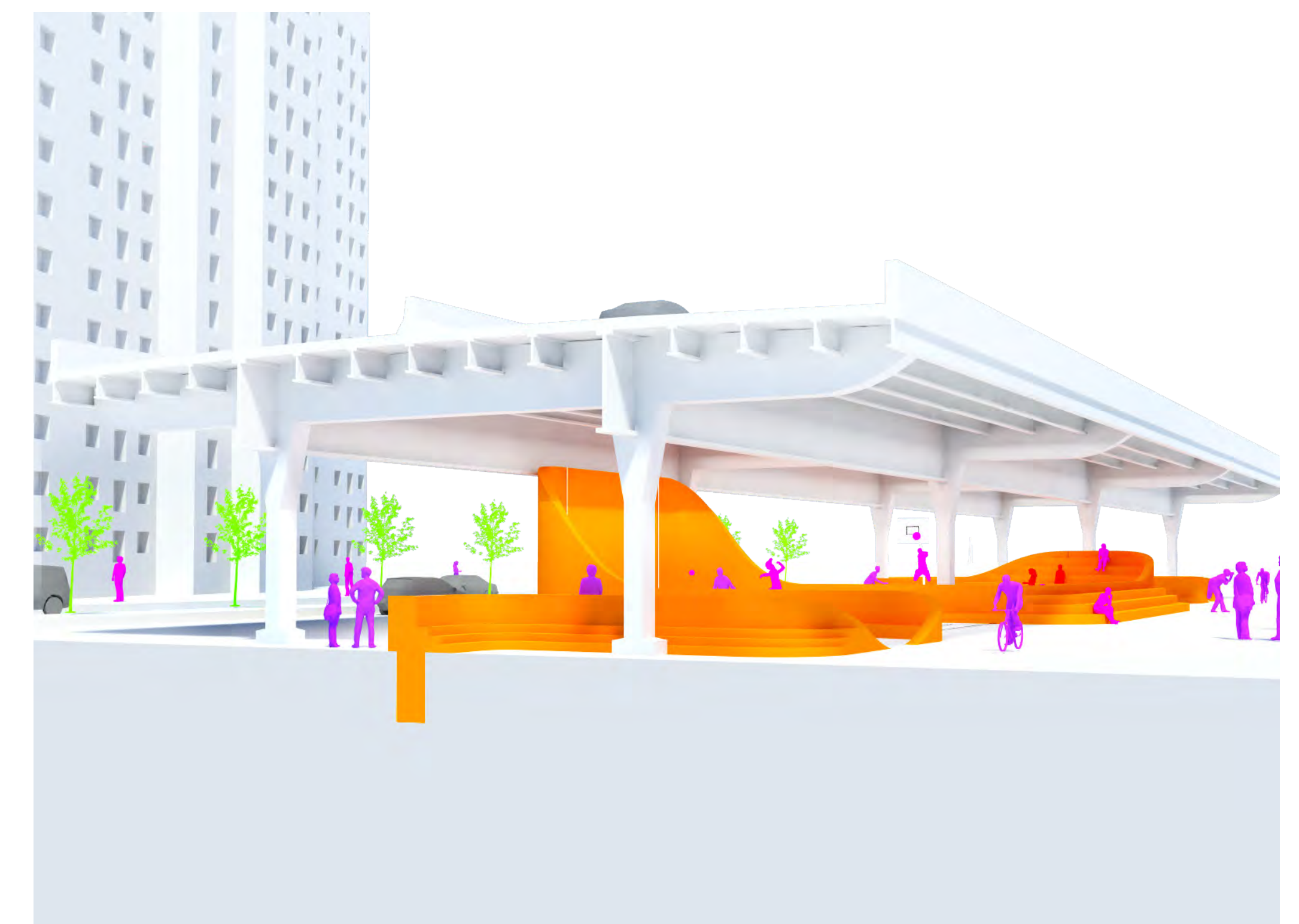
2 UNDER THE FDR DRIVE

2a. Protective Pavilions

2b. Big Bench



a. Open position

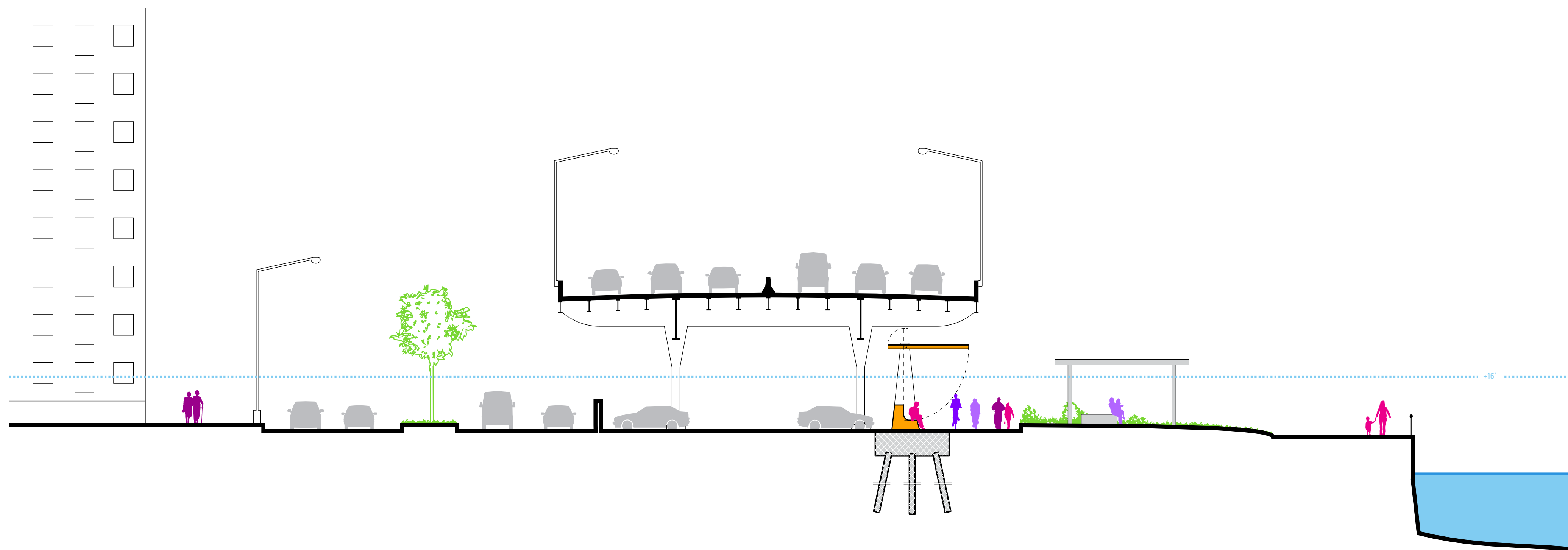


b. Storm position

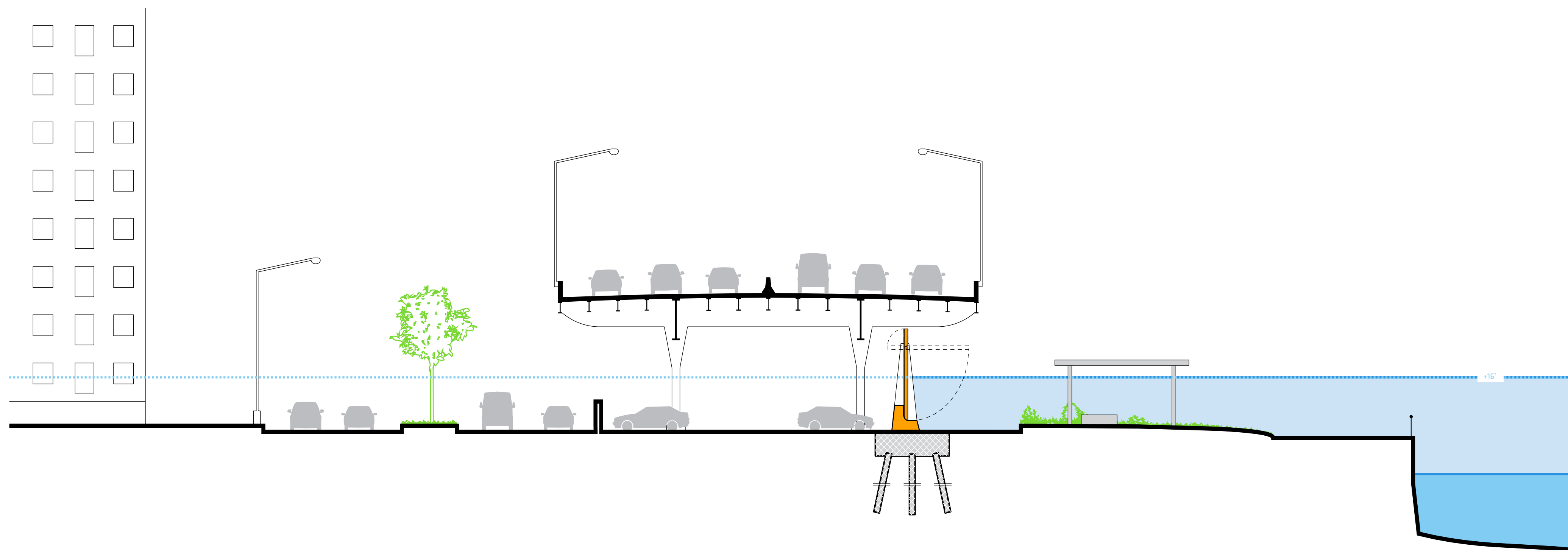


FLOOD PROTECTION TYPES IN STUYVESANT COVE

3 AT THE EDGE OF THE FDR DRIVE 3a. Flip-down



a. Open position



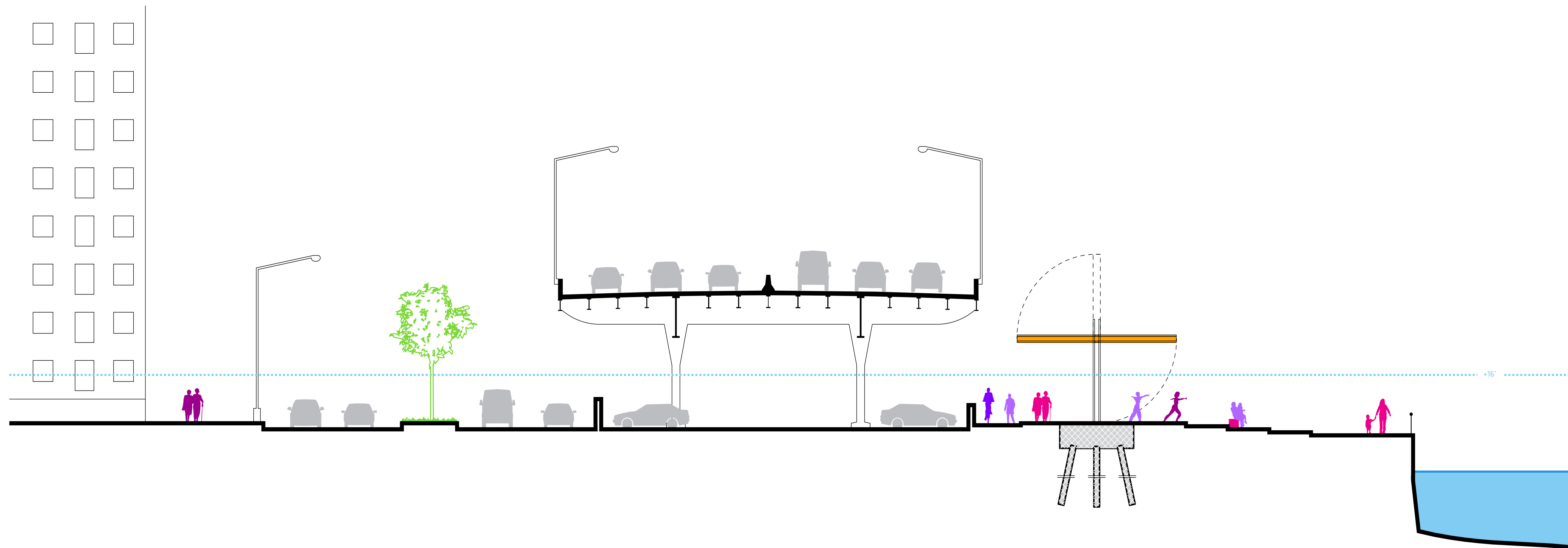
b. Storm position

FLOOD PROTECTION TYPES IN STUYVESANT COVE

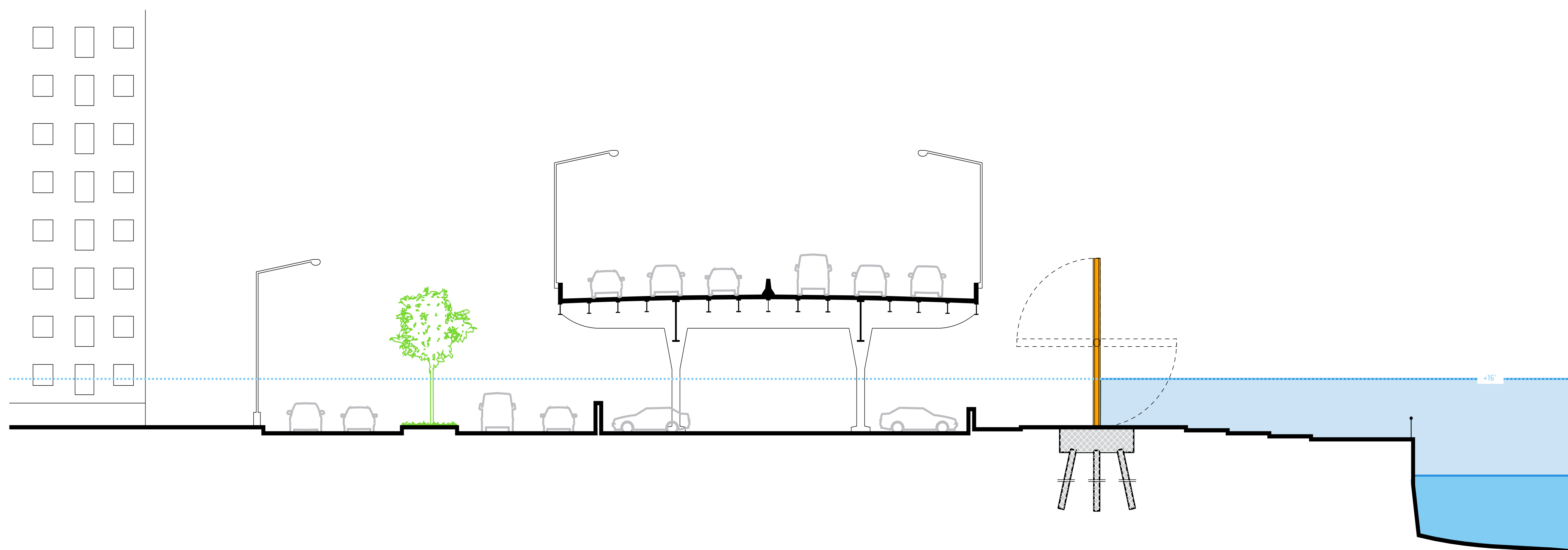
4 IN STUYVESANT COVE PARK

4a. Flip-down Canopy

4b. Elevated Park



a. Open position



b. Storm position

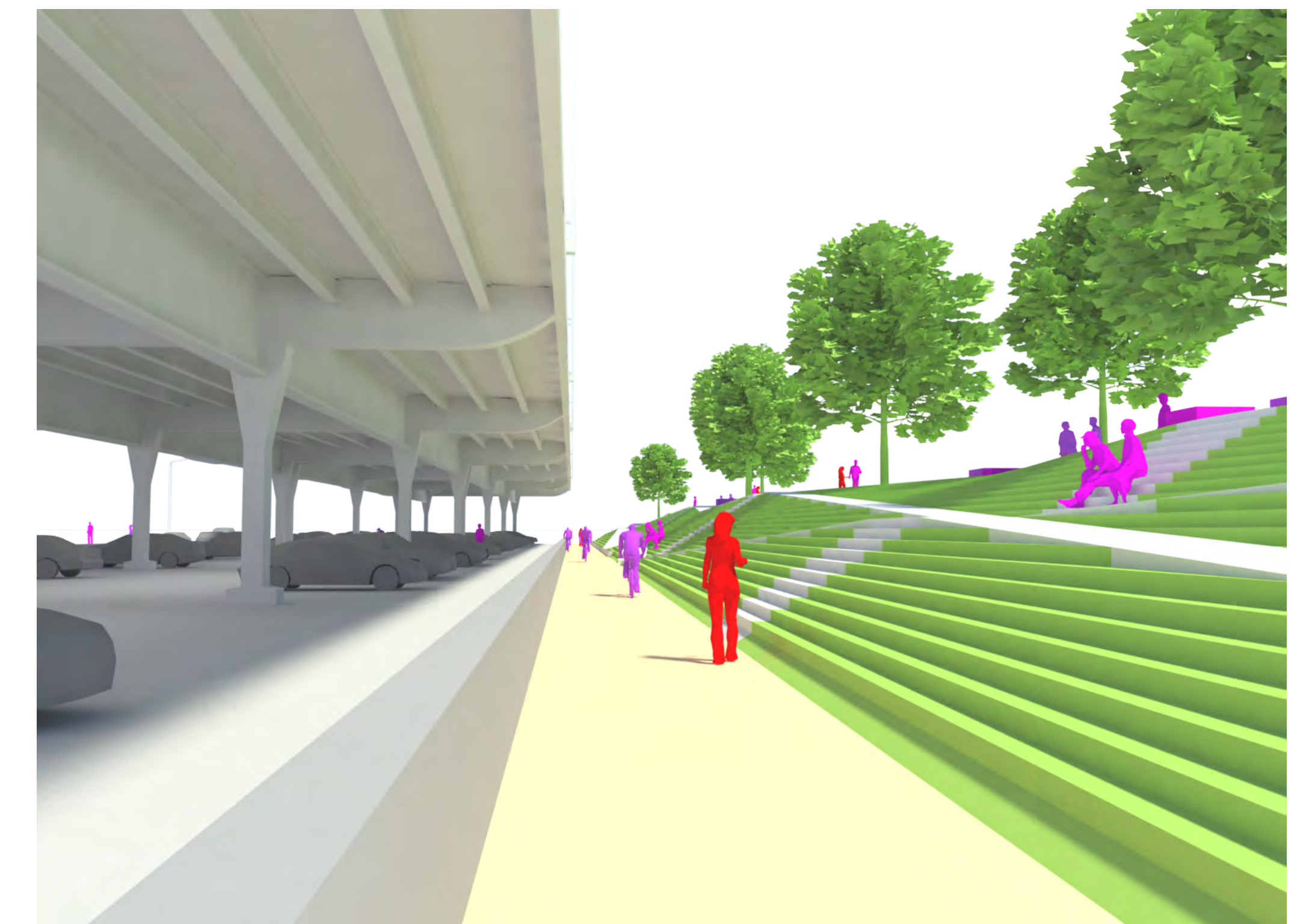
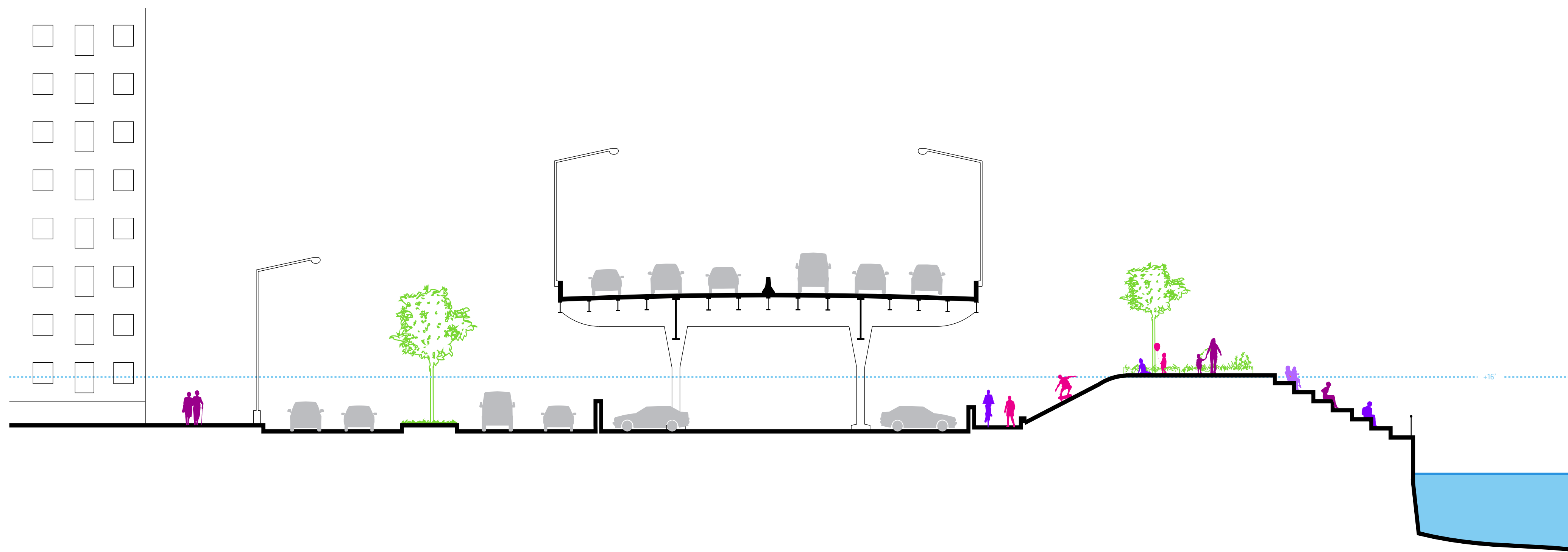


FLOOD PROTECTION TYPES IN STUYVESANT COVE

4 IN STUYVESANT COVE PARK

4a. Flip-down Canopy

4b. Elevated Park





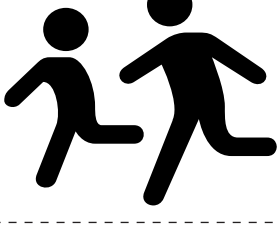


a. Open/Storm position

WORKSHEET FACILITATOR SET

NEIGHBORHOOD CONNECTIONS TO STUYVESANT COVE PARK

Use the map to the right to indicate how you usually get to Stuyvesant Cove Park. Do you cross at E23rd street, E20th street or at the intersection between Ave. C and the FDR Drive?

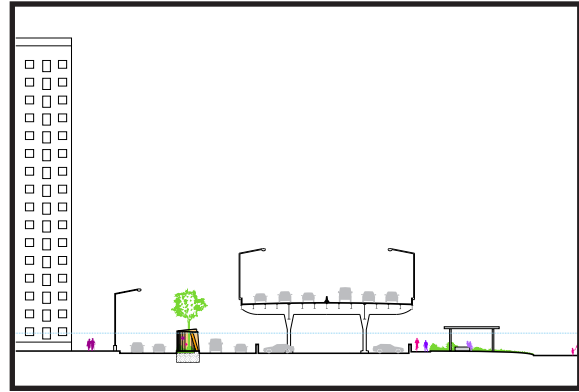
At which intersection do you feel most comfortable crossing...

	E23rd St	E20th St	Ave. C & FDR
...on foot? 			
...on a bike? 			
...with children? 			
...with/as a senior? 			
...with a wheelchair? 			

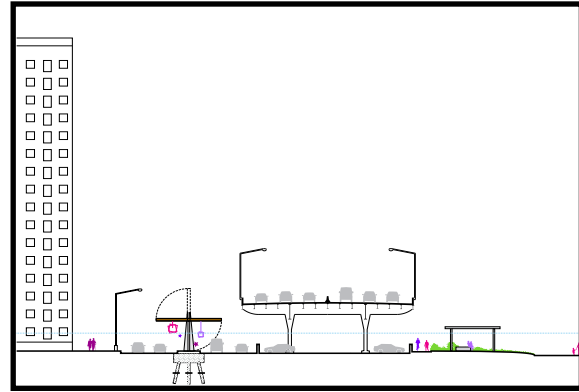


FLOOD PROTECTION TYPES IN STUYVESANT COVE

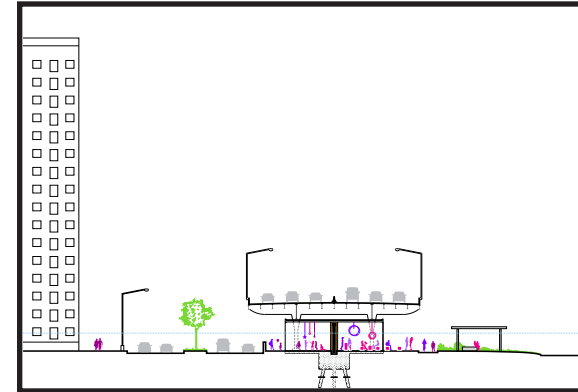
Use this sheet to compare the pros and cons of each type of flood protection option!



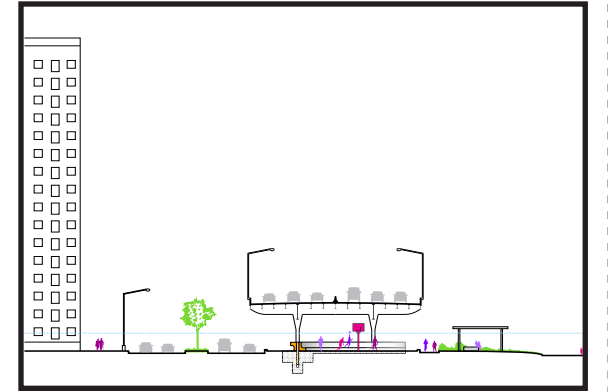
1 **ALONG THE MEDIAN**
1a. Wiggly Wall



1 **ALONG THE MEDIAN**
1b. Flip-down Canopy



2 **UNDER FDR DRIVE**
2a. Protective Pavilions



2 **UNDER FDR DRIVE**
2b. Big Bench

PROS

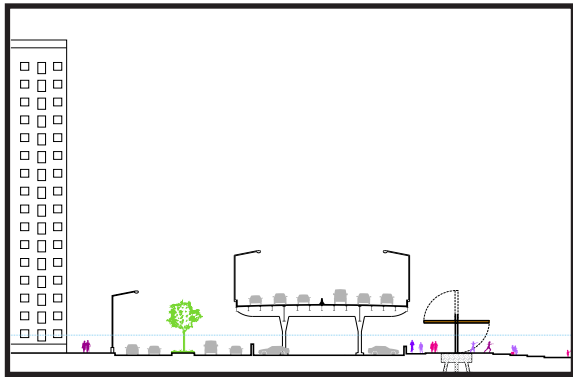
CONS

FLOOD PROTECTION TYPOLOGIES IN STUYVESANT COVE

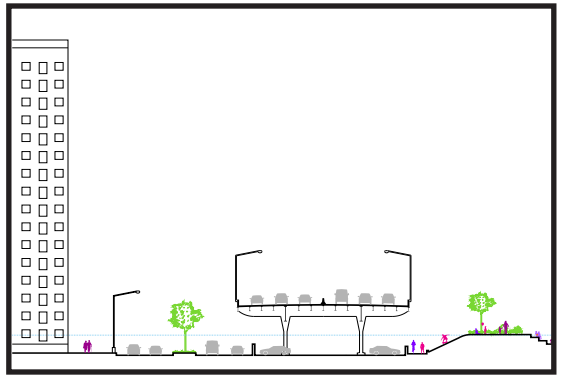
Use this sheet to compare the pros and cons of each type of flood protection option!



3 EDGE OF FDR DRIVE
3a. Flip-down



4 IN STUYVESANT COVE PARK
4a. Flip-down Canopy

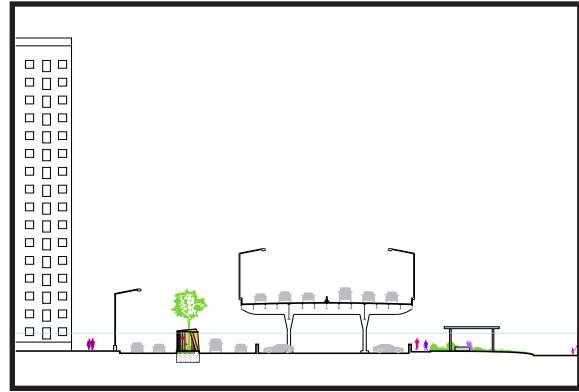


4 IN STUYVESANT COVE PARK
4b. Elevated Park

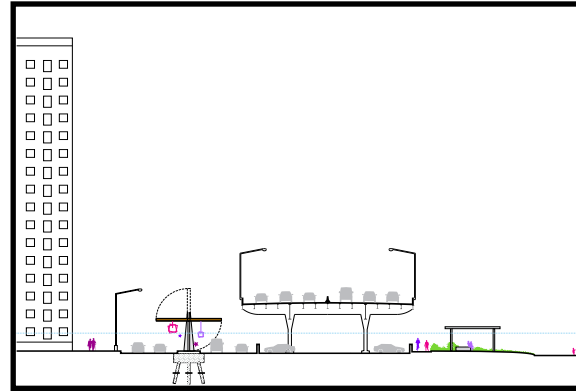
PROS

CONS

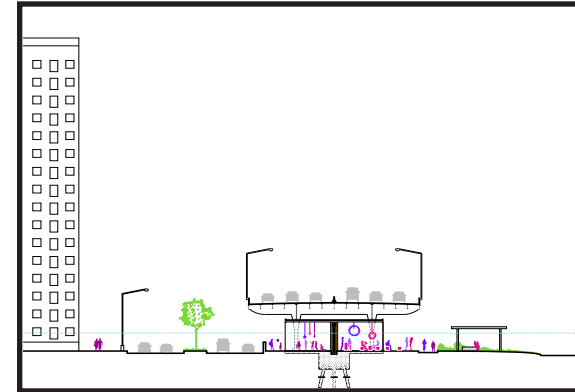
使用此頁比較各
防護類型選項的利
弊!



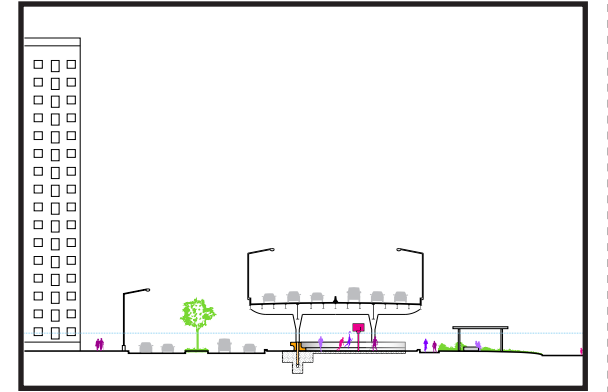
1 1a. 造型牆



1 1b. 下方的彈拉式
遮篷



2 FDR DRIVE 下方
2a. 防護亭

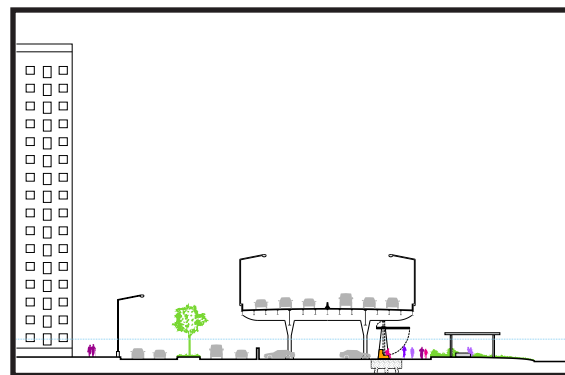


2 FDR DRIVE 下方
2b. 下方的大長凳

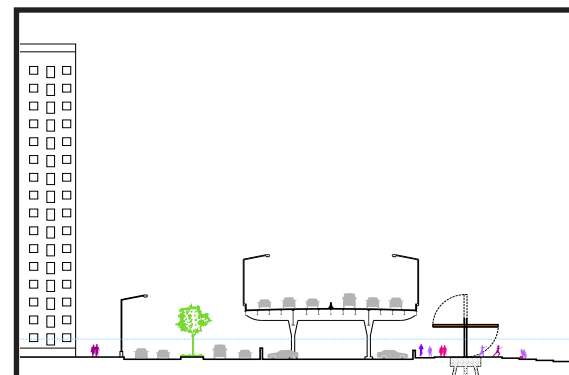
亲

抵抗

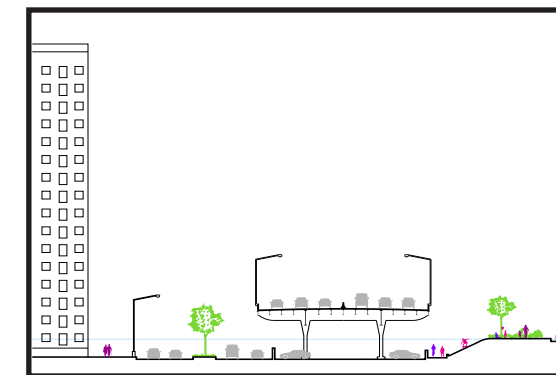
使用此頁比較各防護類型選項的利弊!



3 3a. 史岱文森海灣公園的彈拉式遮篷



4 史岱文森海灣公園 4a. 彈拉式遮篷



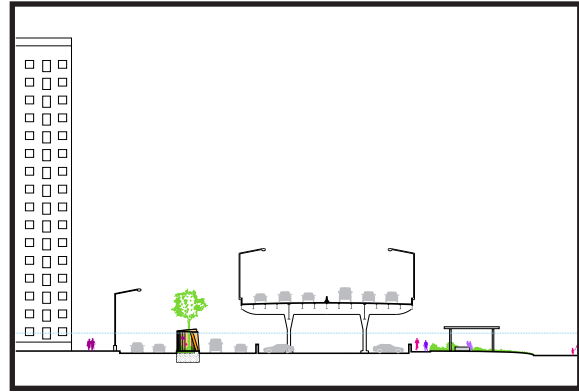
4 史岱文森海灣公園 4b. 高架公園

亲

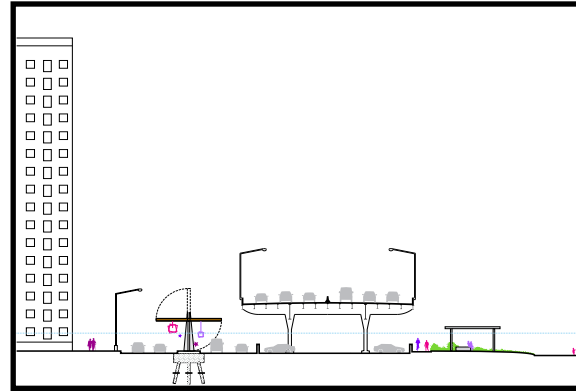
抵抗

TIPOS DE PROTECCIÓN DE INUNDACIONES

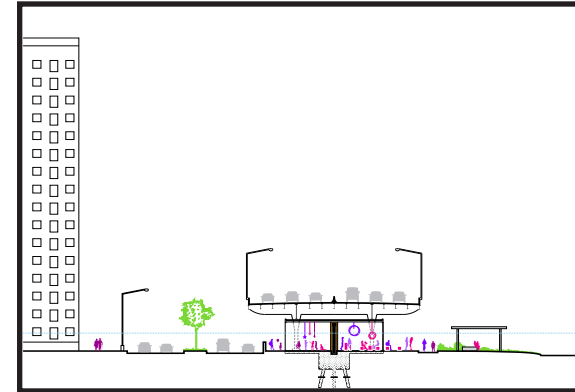
Use esta hoja para
comparar las ventajas
y desventajas de cada
opción de protección de
inundaciones!



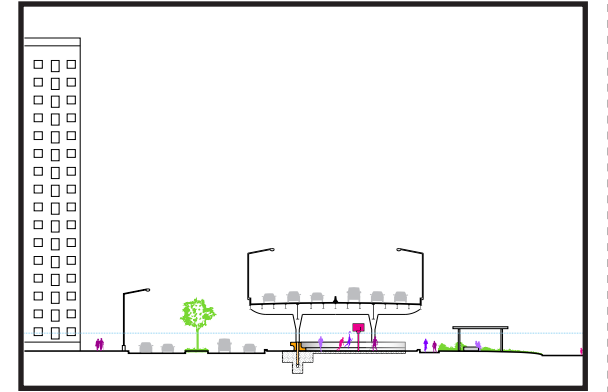
1 A LO LARGO DEL
CAMELLÓN
1a. Pared curva



1 A LO LARGO DEL
CAMELLÓN
1b. Toldo abatible



2 BAJO EL FDR DRIVE
2a. Pabellones
protectores



2 BAJO EL FDR DRIVE
2b. Banca grande

VENTAJAS

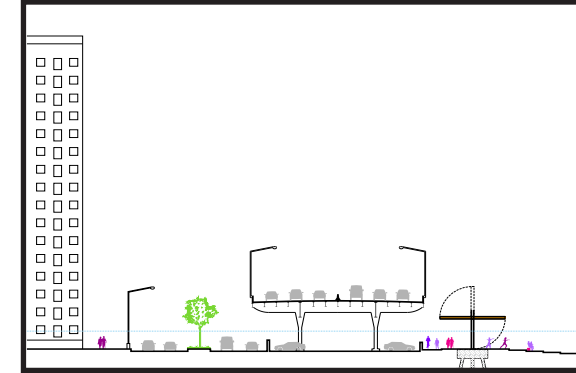
DESVENTAJAS

TIPOS DE PROTECCIÓN DE INUNDACIONES

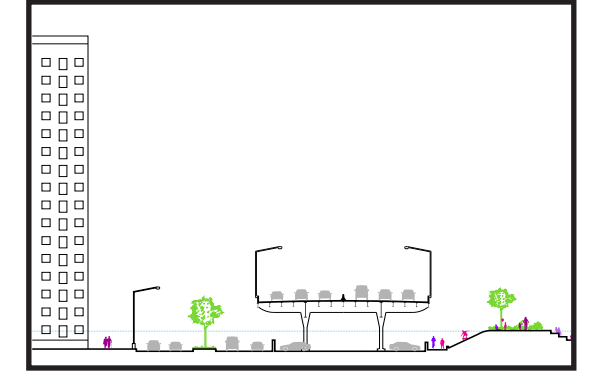
Use esta hoja para
comparar las ventajas
y desventajas de cada
opción de protección de
inundaciones!



3 EN LA ORILLA
DEL FDR DRIVE
3a. Voltear hacia abajo



4 EN EL PARQUE
STUYVESANT COVE
4a. Toldo abatible



4 EN EL PARQUE
STUYVESANT COVE
4b. Parque elevado

VENTAJAS

DESVENTAJAS

