

#ONENYC

Our Resilient City

East Side Coastal Resiliency Project
Sept. 30th, 2015 - CB3/CB6 Joint Task Force

CB3/CB6 Joint Waterfront Task Force

September 30, 2015

- 1. Project Overview and Schedule**
- 2. Progress of Technical Studies**
- 3. Project Area One - Round 3 Community Feedback**
- 4. Project Area Two - Round 3 Community Feedback**
- 5. Next Steps**

OVERVIEW

WHAT IS THE EAST SIDE COASTAL RESILIENCY PROJECT?

The ESCR Project is being designed to mitigate future climate change and flood risks on Manhattan's East Side.



THE EAST SIDE

NOTE: ILLUSTRATIVE DIAGRAM, NOT TO SCALE

WHAT IS THE EAST SIDE COASTAL RESILIENCY PROJECT?

The ESCR Project is being designed to mitigate future climate change and flood risks on Manhattan's East Side.



WHAT HAPPENED DURING SANDY?

NOTE: ILLUSTRATIVE DIAGRAM, NOT TO SCALE

WHAT IS THE EAST SIDE COASTAL RESILIENCY PROJECT?

The ESCR Project is being designed to mitigate future climate change and flood risks on Manhattan's East Side.

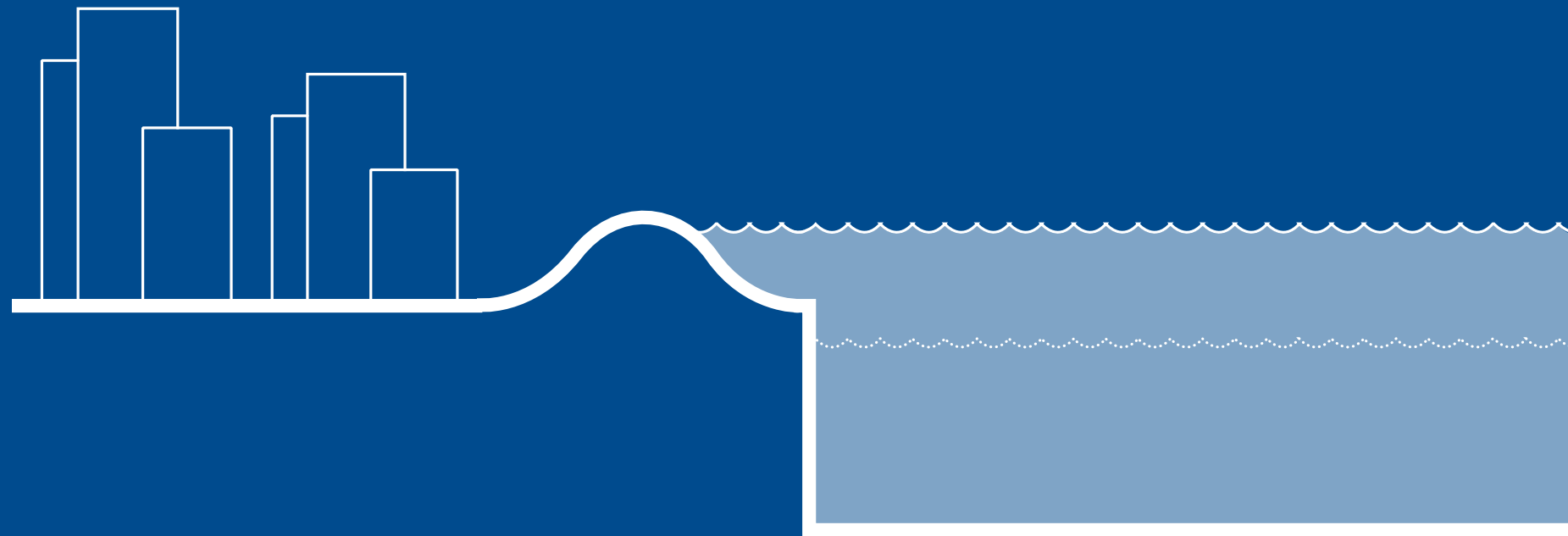


BARRIER

NOTE: ILLUSTRATIVE DIAGRAM, NOT TO SCALE

WHAT IS THE EAST SIDE COASTAL RESILIENCY PROJECT?

The ESCR Project is being designed to mitigate future climate change and flood risks on Manhattan's East Side.

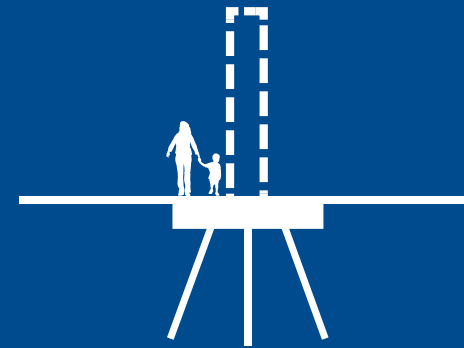


FLOOD PROTECTION

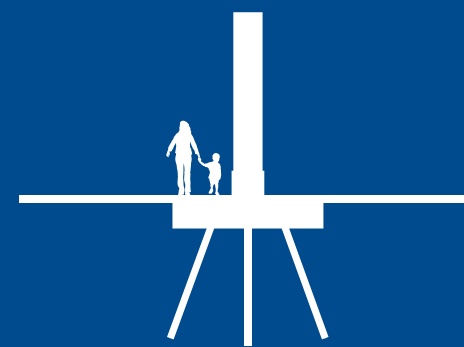
NOTE: ILLUSTRATIVE DIAGRAM, NOT TO SCALE

TYPES OF FLOOD MITIGATION

Options for resiliency have varying forms and levels of reliability: from wide and passive earthen levees to narrow and even removable flood walls and deployable elements.



DEPLOYABLE



FLOOD WALL



BERM / LEVEE

SOCIAL INFRASTRUCTURE

How can resiliency infrastructure double as places and spaces for people?



 PEOPLE

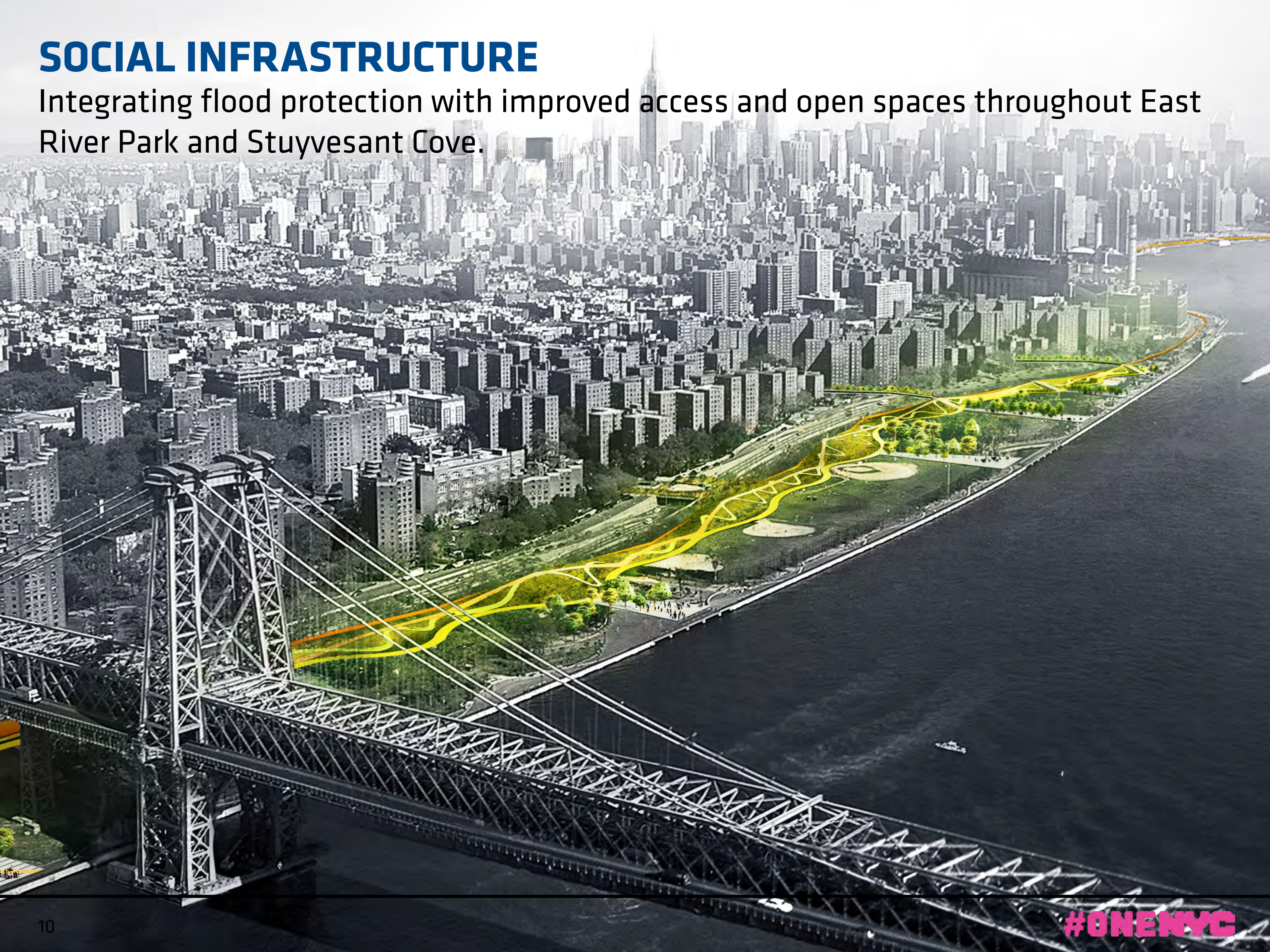
+



 RESILIENCY
INFRASTRUCTURE

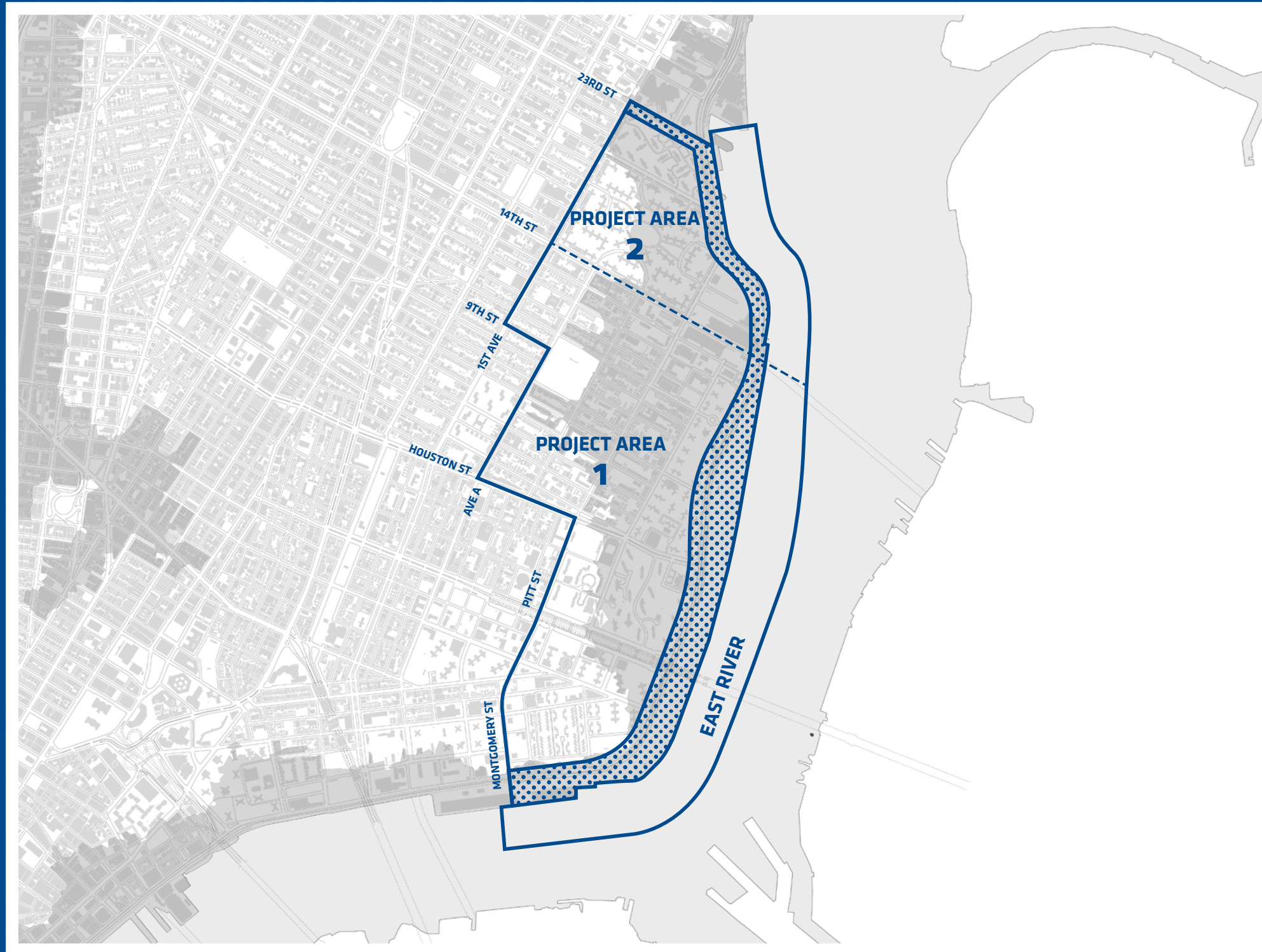
SOCIAL INFRASTRUCTURE

Integrating flood protection with improved access and open spaces throughout East River Park and Stuyvesant Cove.

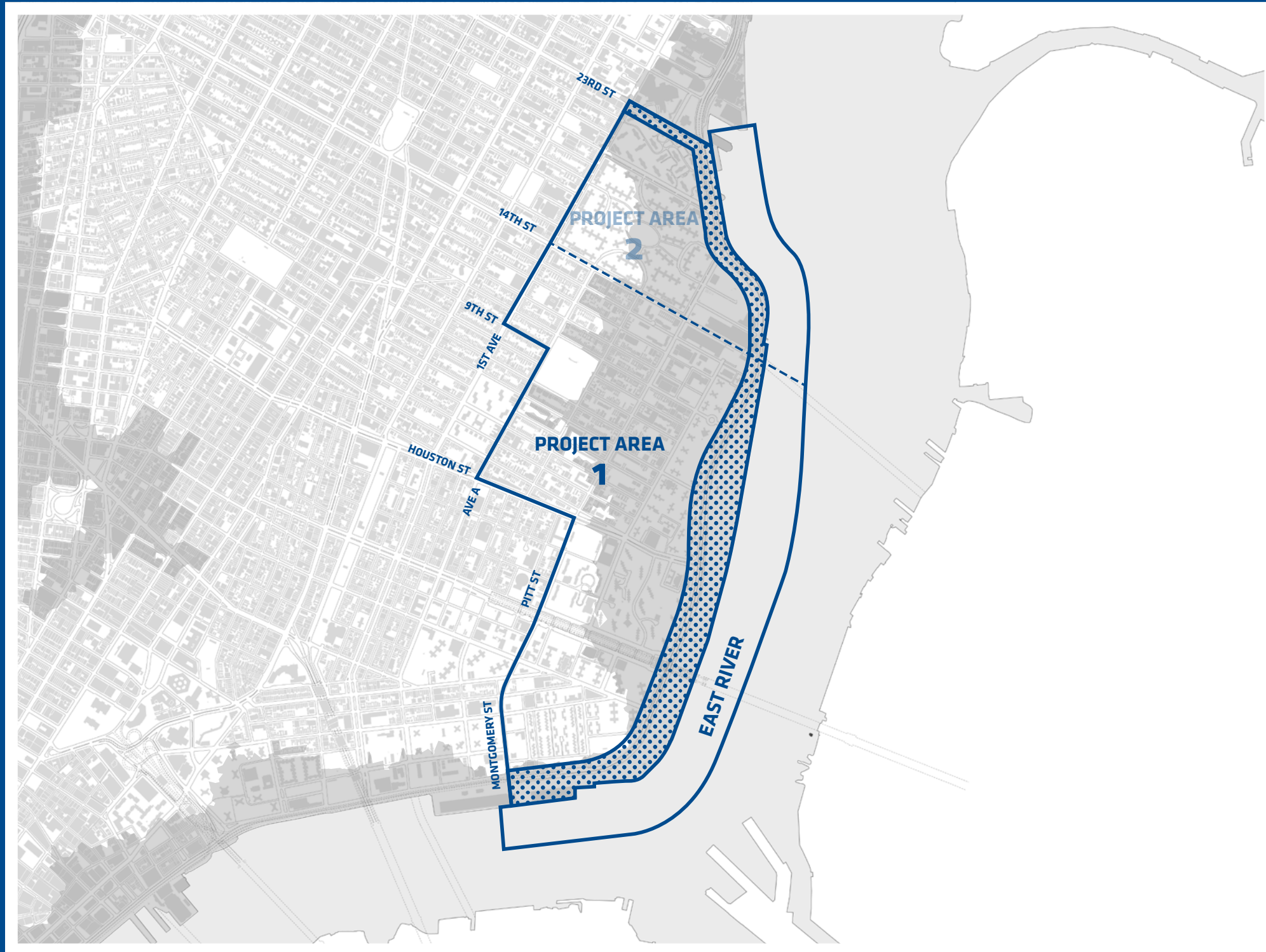


ESCR PROJECT SCOPE

A \$335 million project to implement coastal protection from Montgomery Street to East 23rd Street.



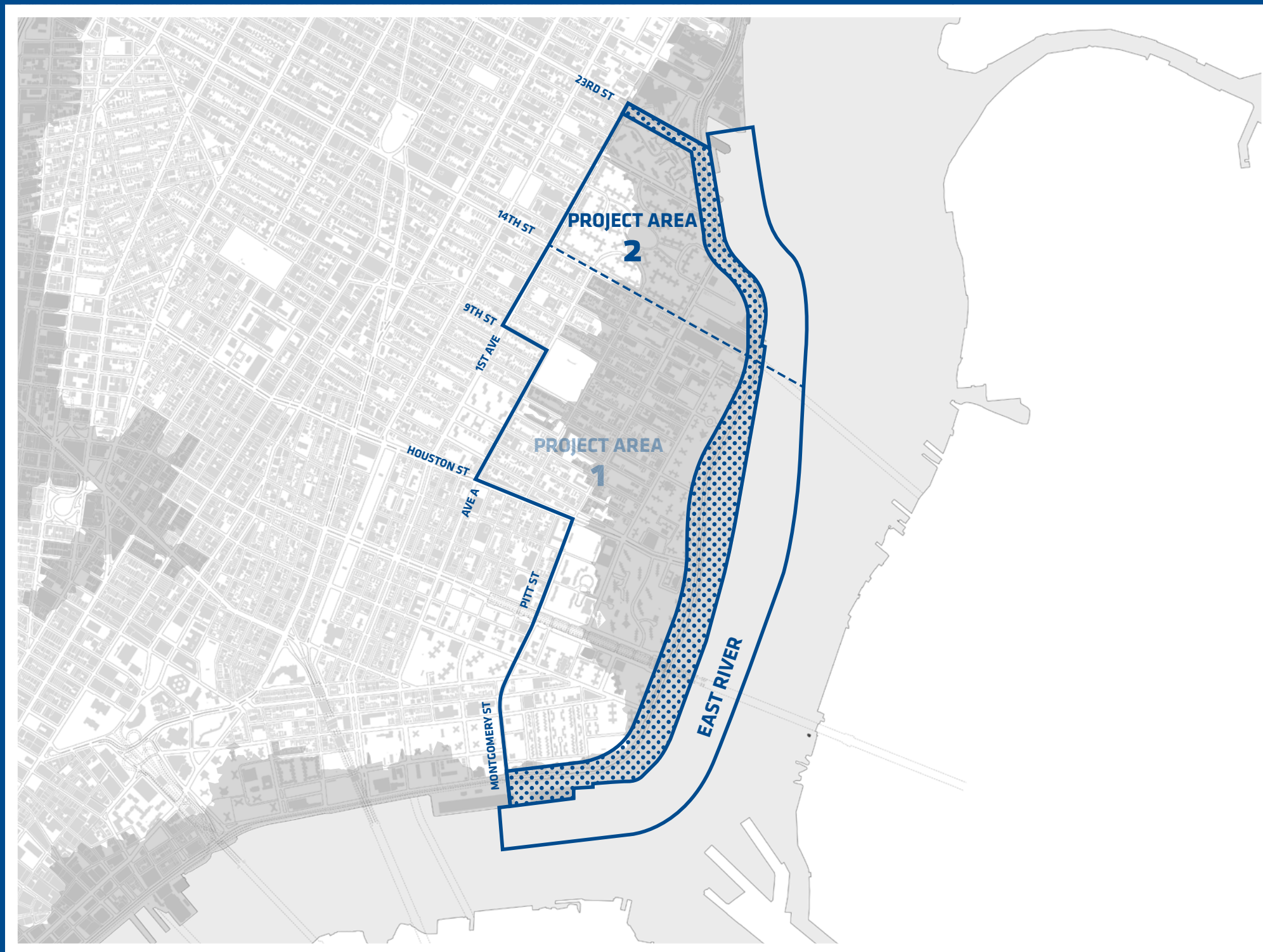
ESCR GOALS AND CHALLENGES - PROJECT AREA 1



EAST RIVER PARK GOALS AND CHALLENGES:

- PROVIDE ROBUST FLOOD-RISK MITIGATION
- MAINTAIN EXISTING RECREATIONAL USES
- STRENGTHEN CONNECTIONS AND ACCESS TO EAST RIVER PARK
- ENHANCE OPEN SPACE AND ECOLOGY OF THE AREA

ESCR GOALS AND CHALLENGES - PROJECT AREA 2

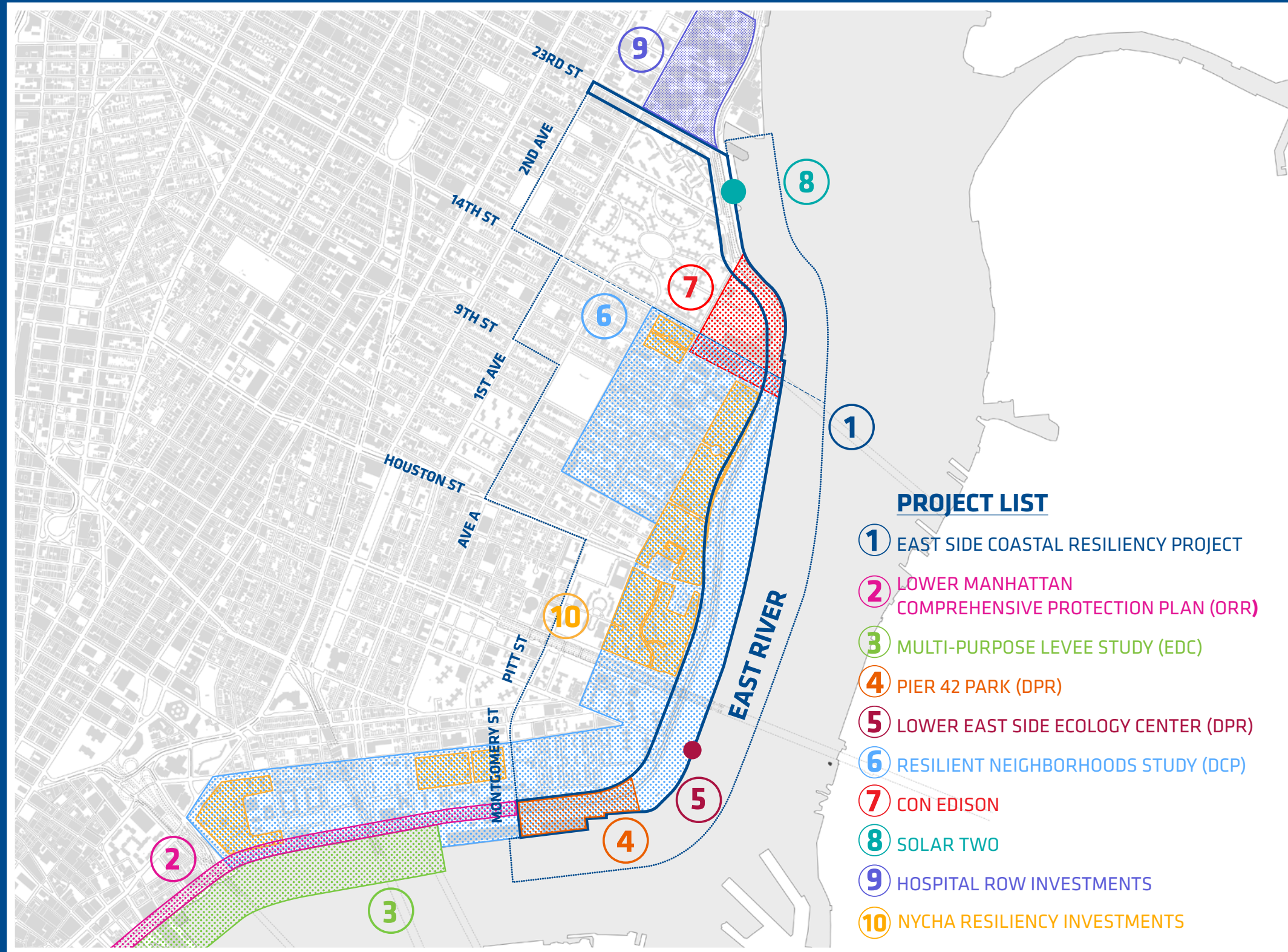


STUYVESANT COVE GOALS AND CHALLENGES:

- PROVIDE ROBUST FLOOD RISK MITIGATION
- PRESERVE SIGHTLINES AND CONNECTIONS TO THE WATERFRONT
- ANTICIPATE FUTURE PROGRAMMING AND USES IN STUYVESANT COVE
- STRENGTHEN NORTH-SOUTH ROUTES
- ADDRESS SAFETY AND ACCESS CONCERNS

COMPLEMENTARY INITIATIVES

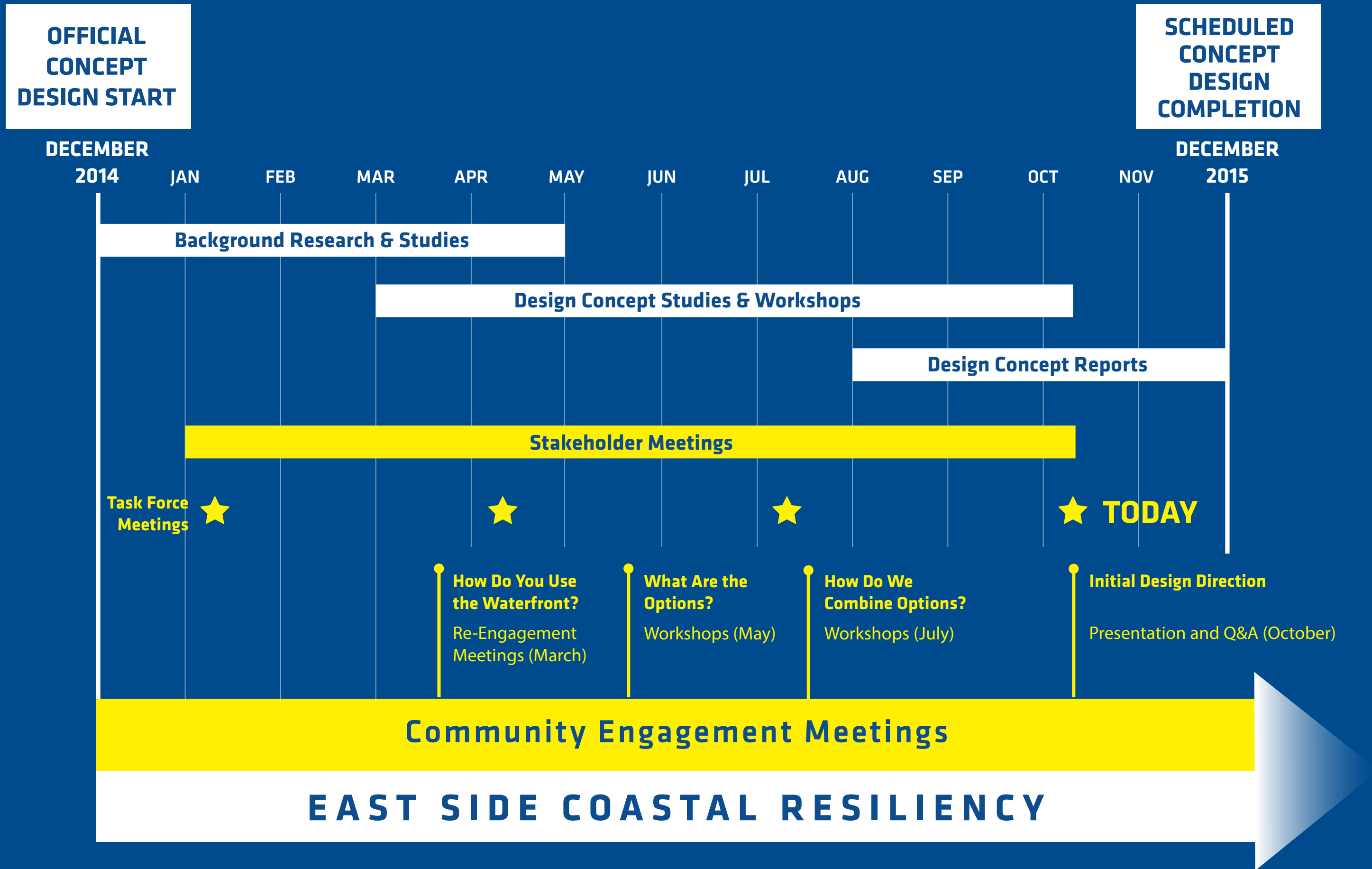
The ESCR Project will be coordinated with other initiatives in the area. City and State funds will be used to advance planning south of Montgomery St.



PROJECT SCHEDULE

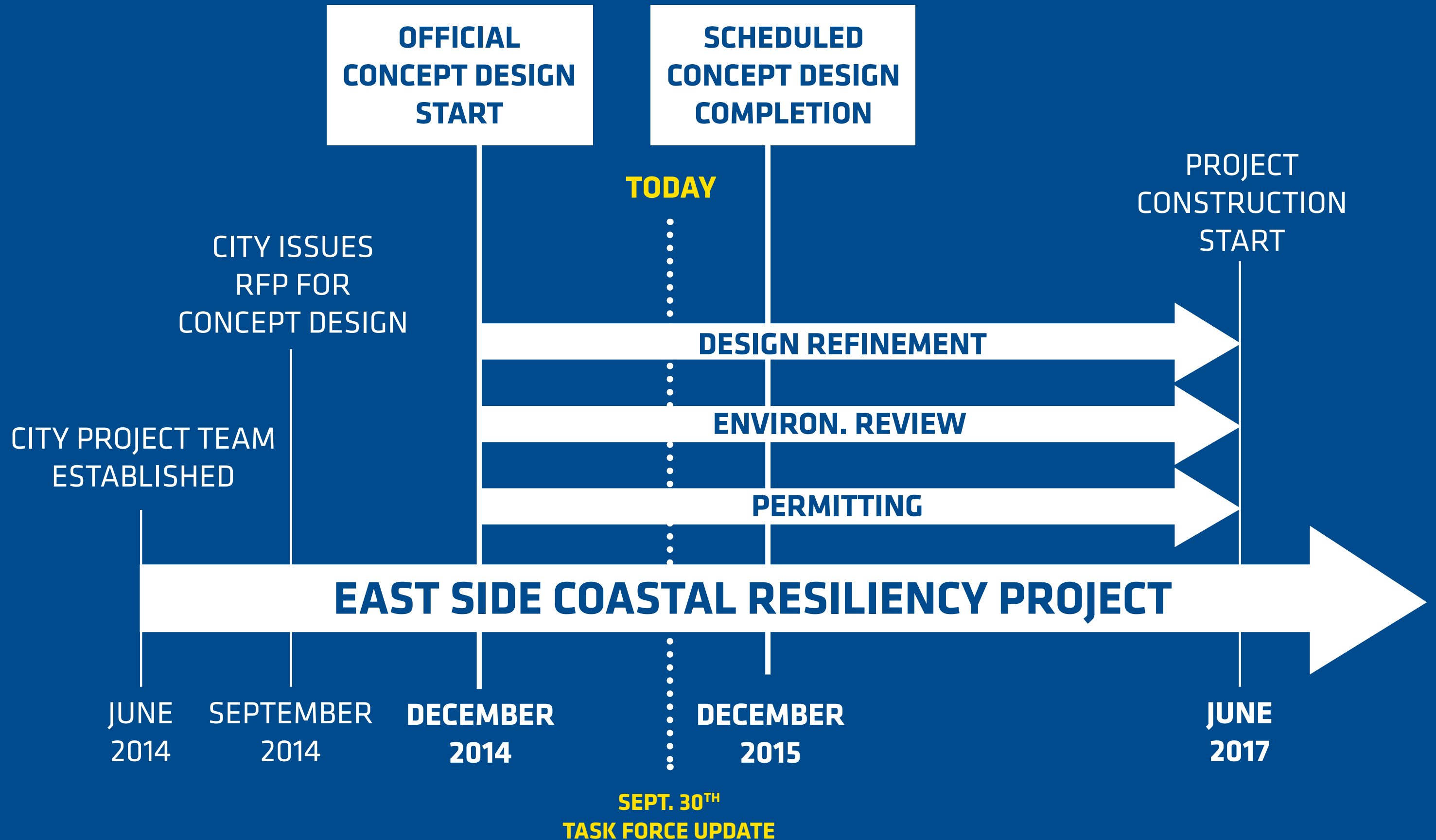
ESCR CONCEPT DESIGN TIMELINE

Project Design Work & Community Engagement - Where are we now?



PROJECT TIMELINE

The ESCR Project has an ambitious timeline, now at approximately 3/4 of the way through Concept Design. Construction commencement is anticipated in mid-2017.



ONGOING REFINEMENT OF DESIGN

Design will continue to evolve through the next year.

DECEMBER
2014

DECEMBER
2015

FEB
2017

JUNE
2017

CONCEPT DESIGN

DESIGN DEVELOPMENT

GROUND
BREAKING

INPUTS:

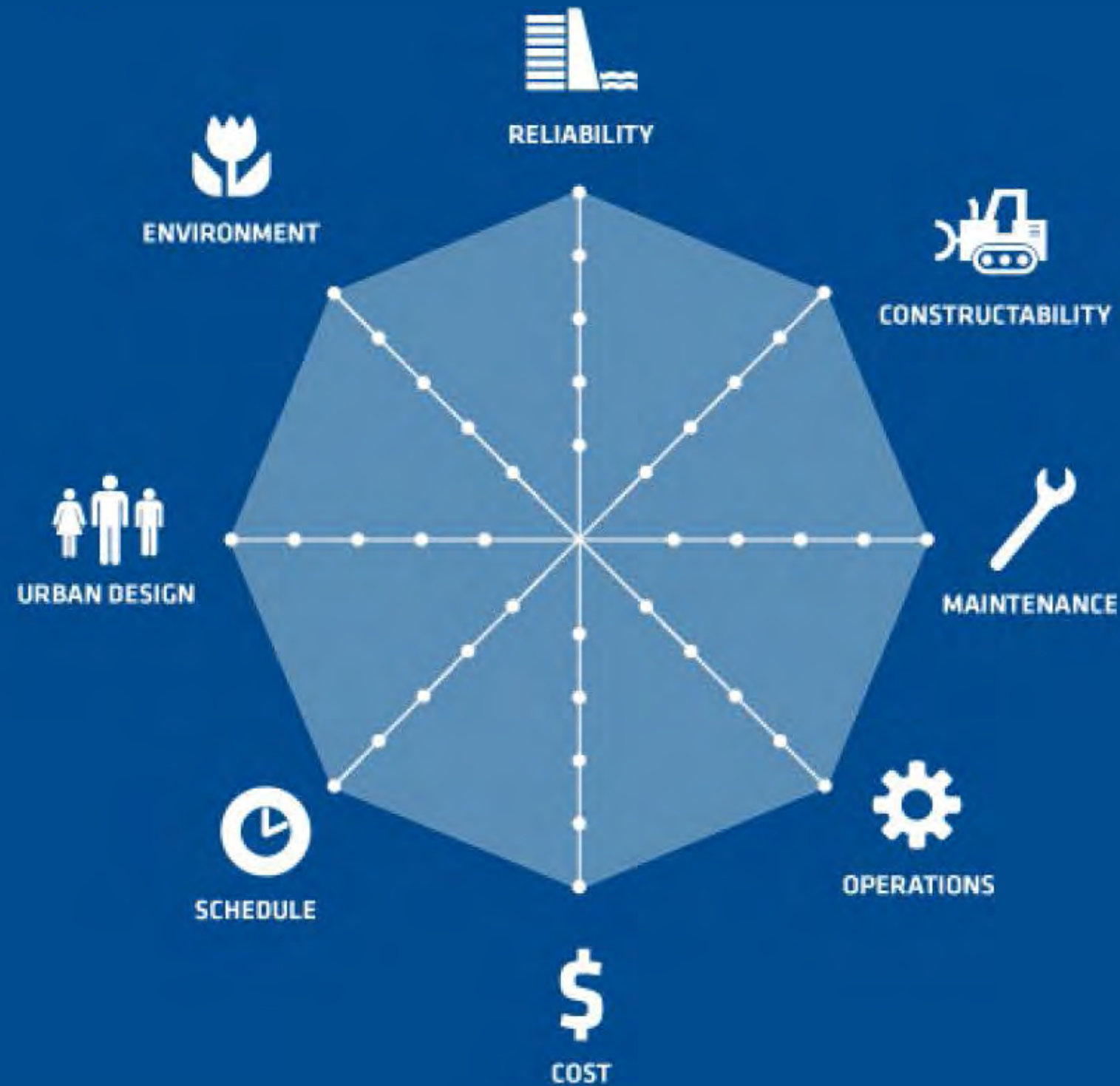
CONTINUED INPUTS:

COMMUNITY PRIORITIES
CITY PRIORITIES
SITE CONDITIONS
TECHNICAL + URBAN DESIGN

REGULATORY CONSTRAINTS
AGENCY COORDINATION
MAINTENANCE
TECHNICAL CONSIDERATIONS
COMMUNITY FEEDBACK
TRADE-OFFS AND BUDGET

EVALUATION CRITERIA

Each alternative will be evaluated for eight different criteria.



8 CRITERIA

PROGRESS OF TECHNICAL STUDIES

EXISTING CONDITIONS STUDIES - PROGRESS TO DATE

Sewer Investigations

100% - 100%
JULY SEPTEMBER



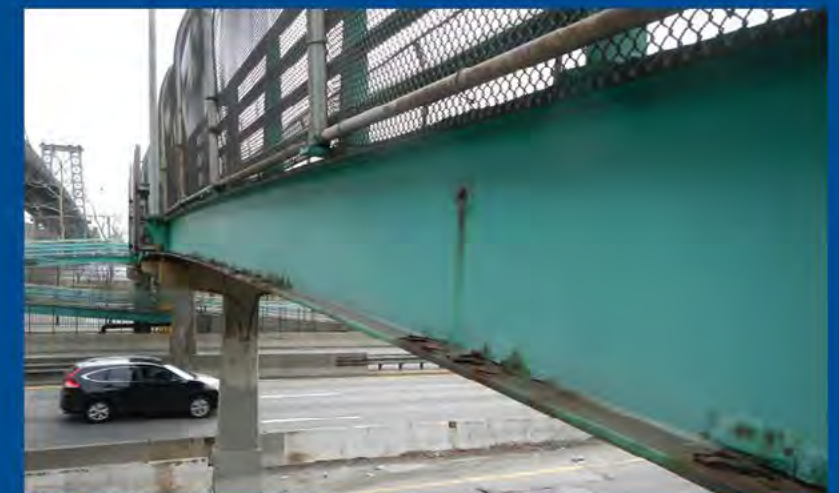
Inspecting Waterfront Structures

100% - 100%
JULY SEPTEMBER



Inspecting Bridges

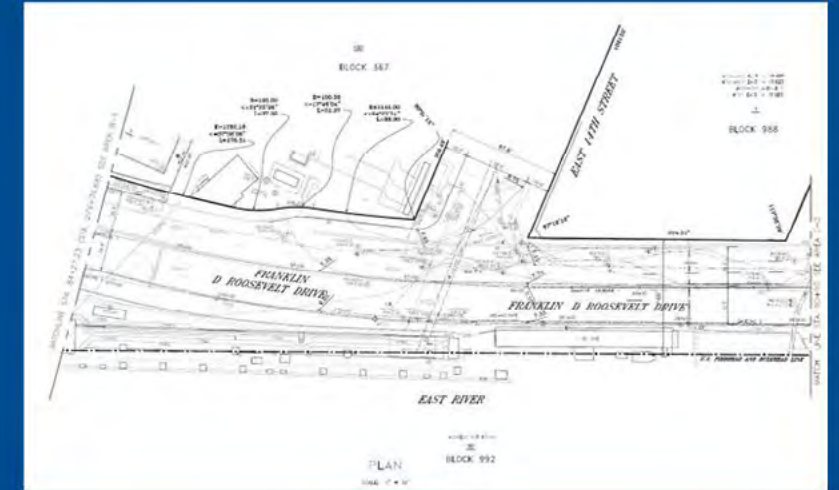
100% - 100%
JULY SEPTEMBER



EXISTING CONDITIONS STUDIES - PROGRESS TO DATE

Surveying the Land

97% - 100%
JULY SEPTEMBER



Examining Flood Risk and Water Flow

70% - 90%
JULY SEPTEMBER



Testing the Soil

70% - 100%
JULY SEPTEMBER



EXISTING CONDITIONS STUDIES - PROGRESS TO DATE

**Studying Pedestrian
and Bicycle Usage**

60% - 100%
JULY SEPTEMBER



**Making an Inventory
of Existing Trees**

60% - 100%
JULY SEPTEMBER



COMMUNITY FEEDBACK TO DATE

THREE ROUNDS OF COMMUNITY ENGAGEMENT

For its third round, the ESCR team gathered feedback about three conceptual design alternatives for PA1 and PA2, using physical models and drawings. Over 380 residents attended this third round of community engagement workshops on 07/28, 07/29, 07/30, and 09/10.



PROJECT AREA 1 WORKSHOP: SEPT. 10TH, HENRY ST SETTLEMENT



PROJECT AREA 2 WORKSHOP: JULY 28TH, STEIN SENIOR CENTRE

STAKEHOLDER ENGAGEMENT

In addition to the community engagement workshops and CB3/CB6 Task Force meetings, the ESCR team continues to collect input from local CBOs and stakeholders.



OPEN SPACE & RECREATION, TRANSPORTATION

CB3 & CB6

Hester St Collaborative

Lower East Side Ecology Centre

OLS Sparkle Little League

Partnerships for Parks

Solar One

Transportation Alternatives



NYCHA TENANT ASSOCIATIONS

Baruch

Campos Plaza

Riis

Rutgers

Smith

Vladeck

Wald

PROJECT AREA ONE
EAST RIVER PARK

EAST RIVER PARK

Existing Conditions - 2050s 100-year floodplain



EAST RIVER PARK NEEDS

Community Requests

**“ BETTER
ACCESS TO EAST
RIVER PARK ”**

“ FAMILY FRIENDLY ”

**“ FLOOD
PROTECTION ”**

**“ SAFETY AND
SECURITY ”**

REBUILD BY DESIGN + EAST SIDE COASTAL RESILIENCY

**“ CONNECTIONS TO
THE WATER ”**

**“ MORE NATURAL
SPACES ”**

ROUND 1 - MARCH COMMUNITY ENGAGEMENT FINDINGS

Of 63 respondents, top-rated improvements for East River Park were a nature walk (61%), cafe (55%), and horticultural displays (52%).

What additional services, activities or spaces would you like to see in or near East River Park?



Nature Walk

61%



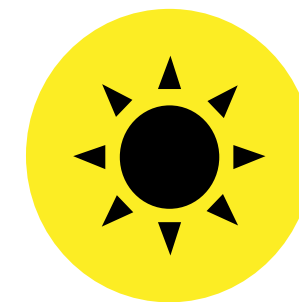
Café

55%



Horticultural displays

52%



Sunbathing

26%



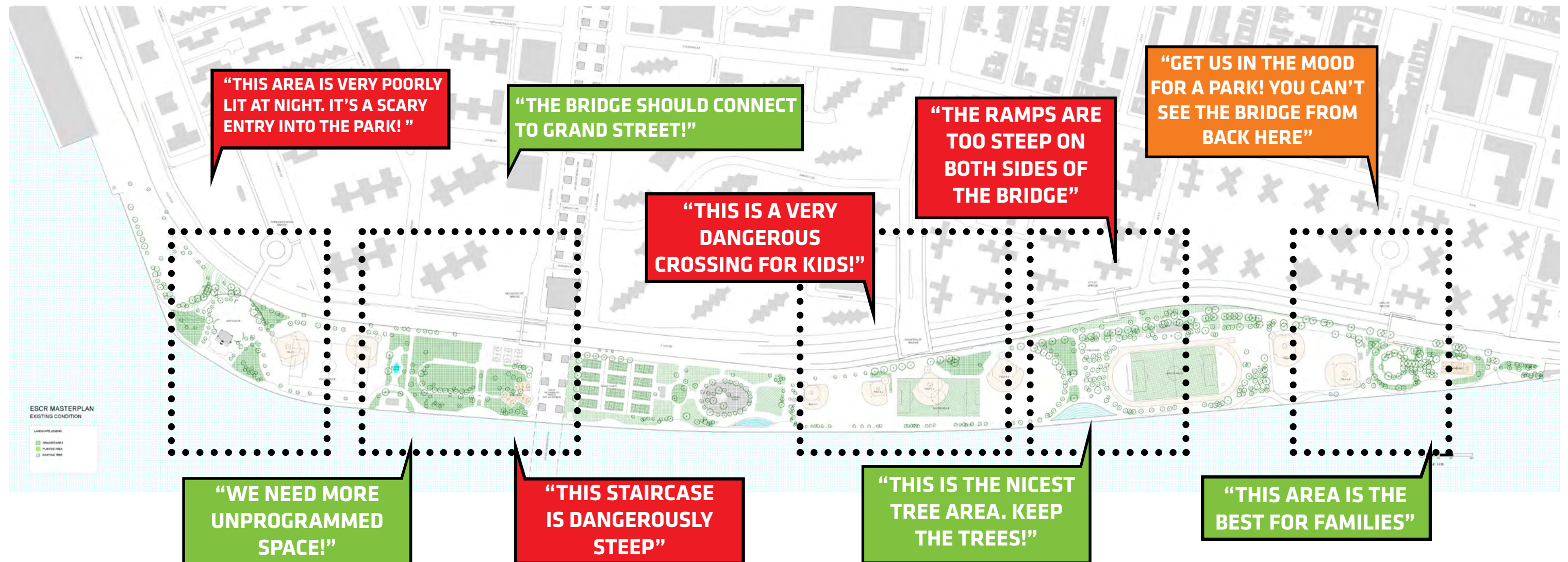
Sports (bocceball,
volleyball, kayak)

26%

Other suggestions include: a dog run, an ice-skating rink, a bike rental facility, a batting cage, movie nights during the summer months, a beach, ping-pong tables, shade structures, a playground, and an eco-festival

ROUND 2 - MAY COMMUNITY ENGAGEMENT FINDINGS

Five connection points were discussed during May design workshops. Concerns, likes, and dislikes were voiced about existing conditions in these areas of the park:

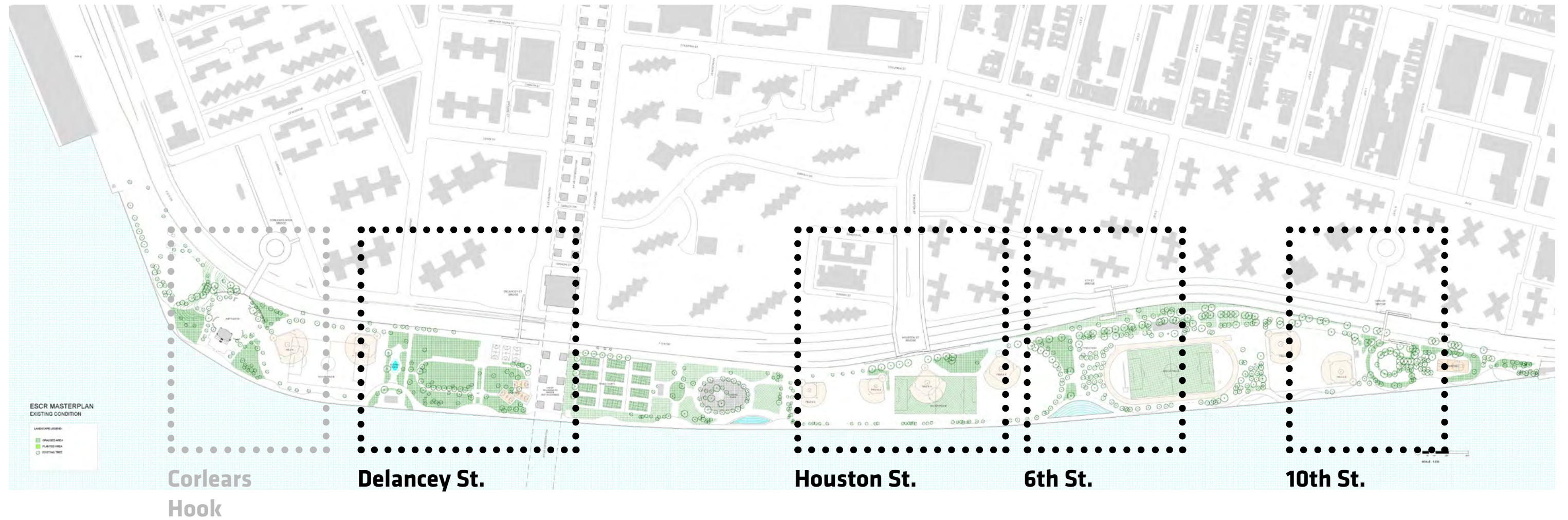


COMMUNITY FEEDBACK

PROJECT AREA ONE
ROUND 3 COMMUNITY ENGAGEMENT
FINDINGS

CONCEPTUAL DESIGN ALTERNATIVES - PA1

Four major areas of East River Park were discussed in terms of flood protection, improvement of access, and enhancement of open space:



ACCESS POINTS

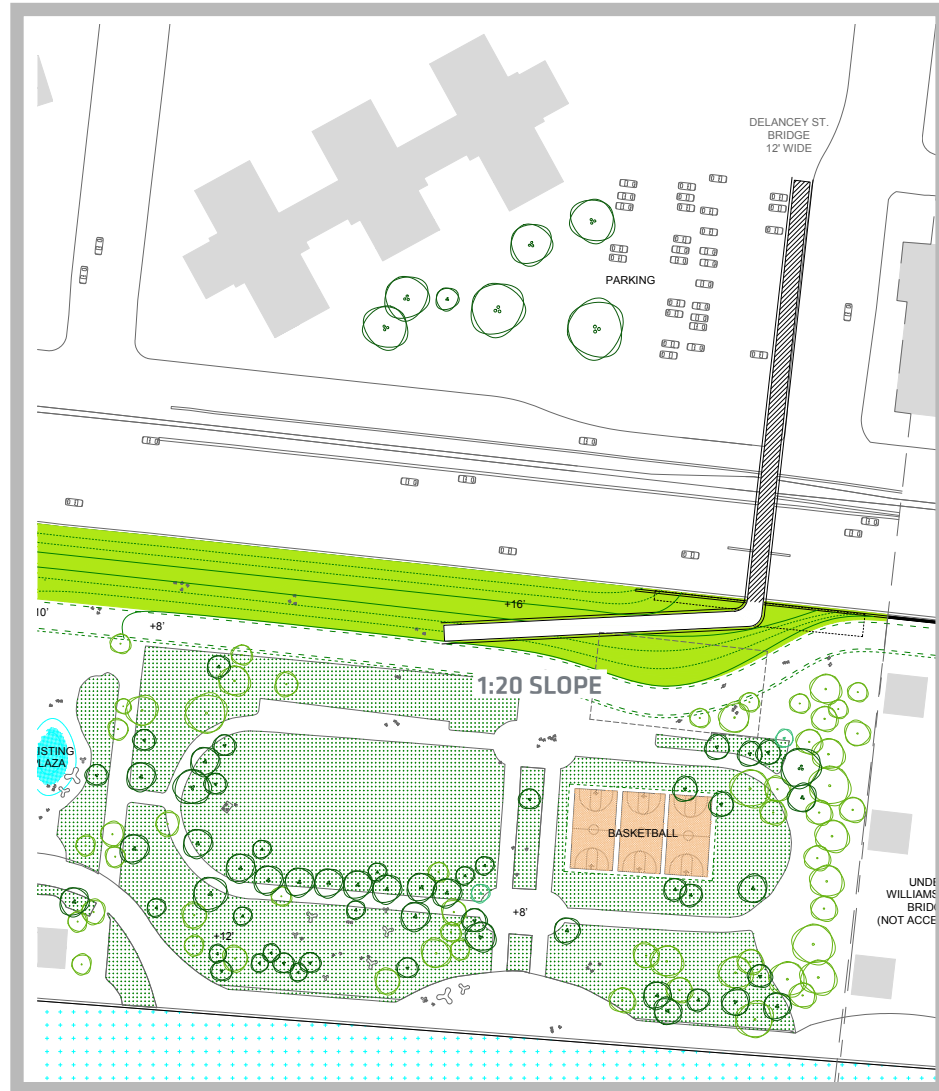
CONCEPTUAL DESIGN ALTERNATIVES - PA1

The ESCR team gathered feedback about three design alternatives for each area during the community engagement workshops on 07/29, 07/30 and 09/10.



EVALUATING THE ALTERNATIVES

Community feedback on the Delancey St. Bridge Area



ALTERNATIVE 1

BASELINE FLOOD PROTECTION



ALTERNATIVE 2

MID-RANGE OPEN SPACE AND ACCESS IMPROVEMENTS



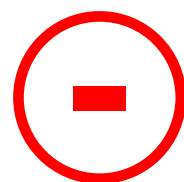
ALTERNATIVE 3

HIGH-RANGE OPEN SPACE AND ACCESS IMPROVEMENTS

COMMUNITY FEEDBACK:



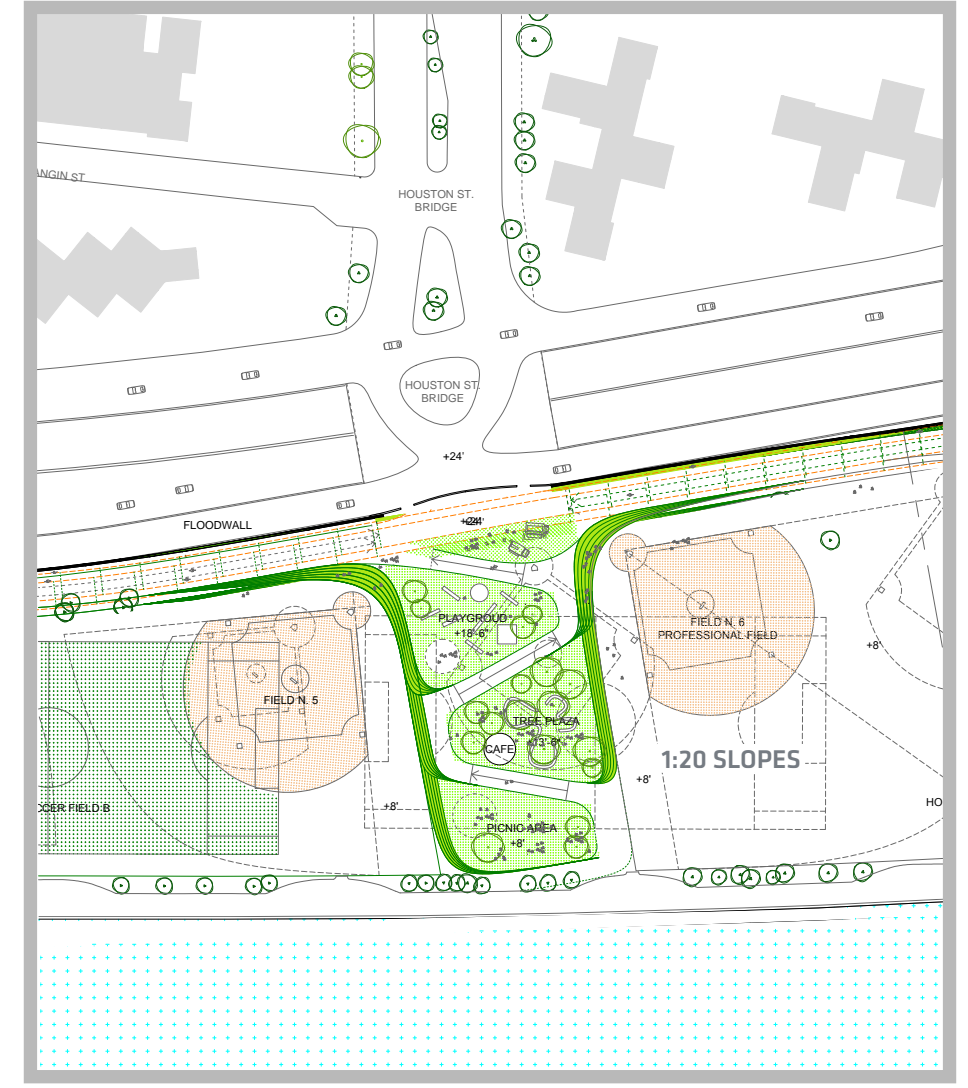
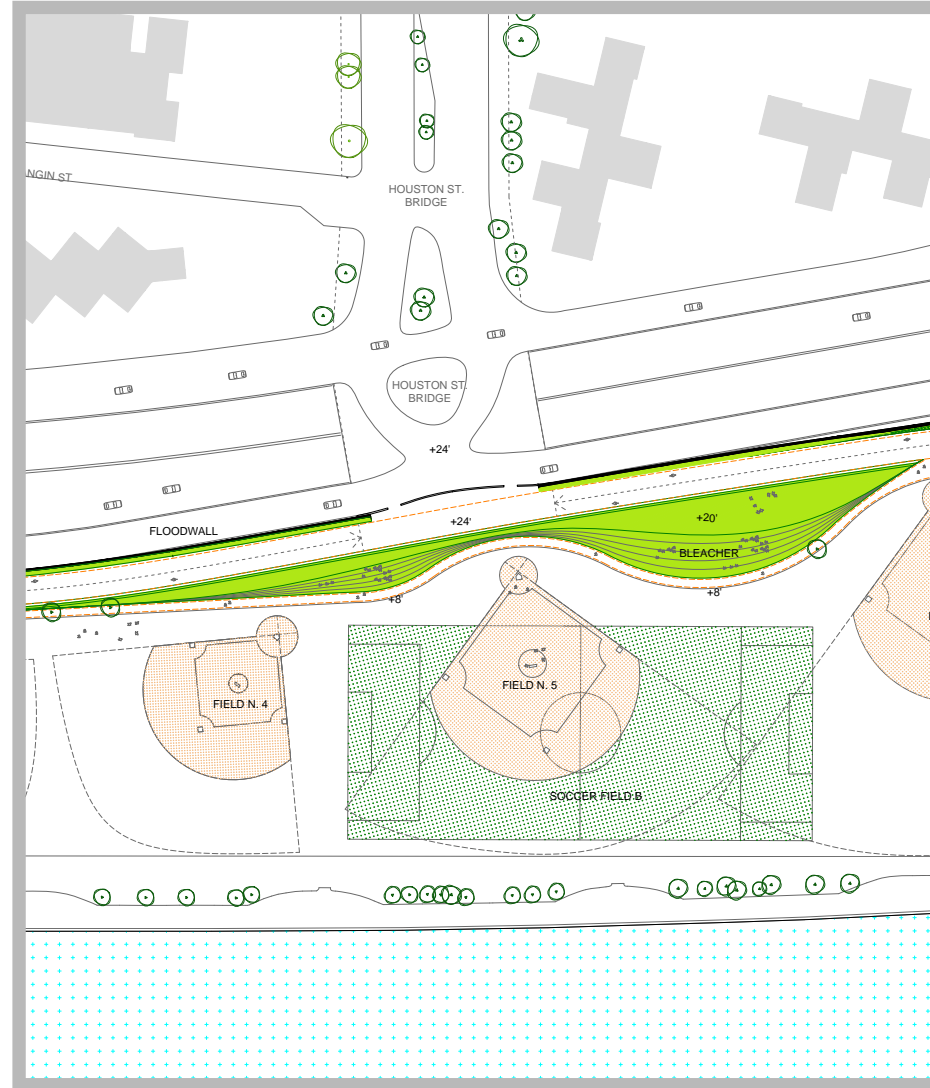
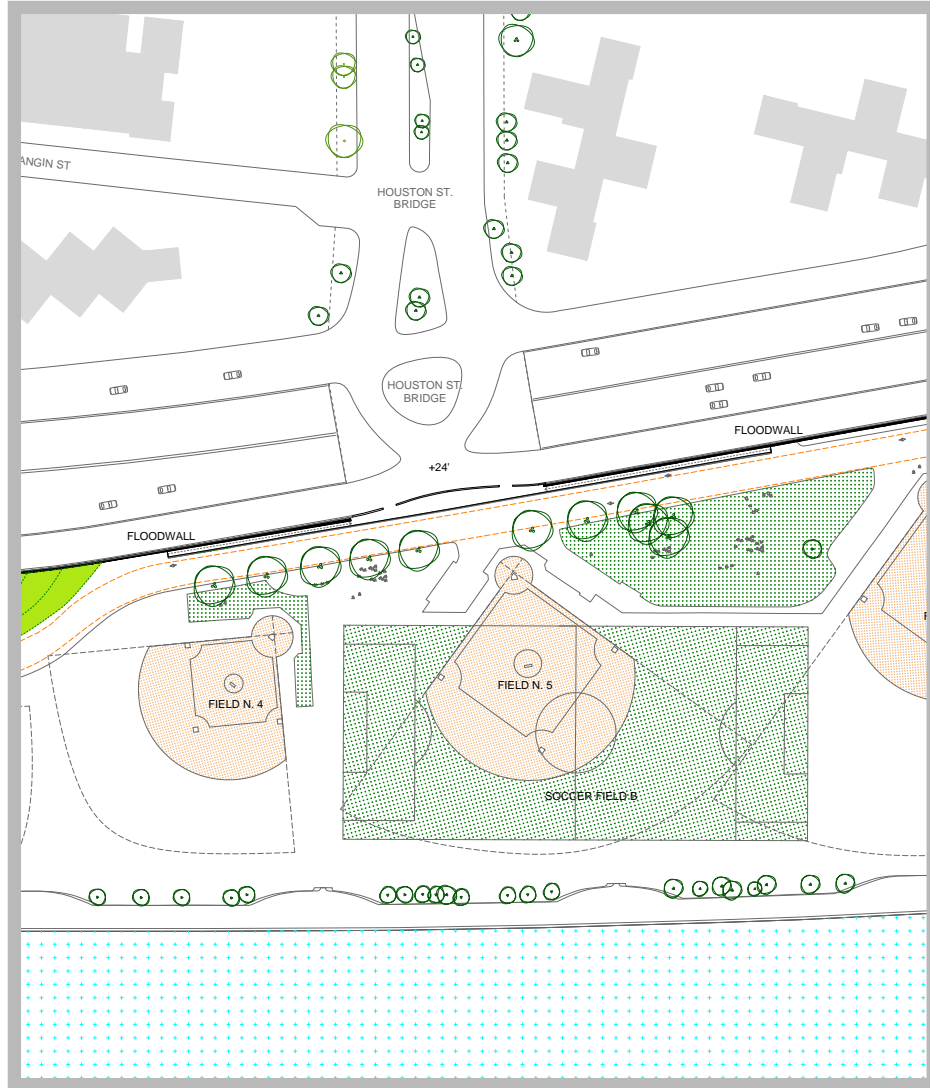
- MODEST-IMPACT BRIDGE SPAN, WITH SEPARATED BIKE AND PEDESTRIAN CIRCULATION
- AN EXTENSIVE BERM OFFERING UNPROGRAMMED SPACE IN EAST RIVER PARK
- GRAND ST. CONNECTION



- EXISTING RAMP CONFIGURATION
- IMPEDIMENT OF EAST RIVER CO-OP CIRCULATION AND EMERGENCY VEHICLE ACCESS
- THREATS TO SENIOR SAFETY

EVALUATING THE ALTERNATIVES

Community feedback on the Houston St. Overpass Area



ALTERNATIVE 1

BASELINE FLOOD PROTECTION

ALTERNATIVE 2

MID-RANGE OPEN SPACE AND
ACCESS IMPROVEMENTS

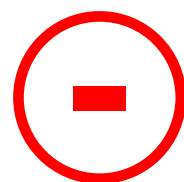
ALTERNATIVE 3

HIGH-RANGE OPEN SPACE AND
ACCESS IMPROVEMENTS

COMMUNITY FEEDBACK:



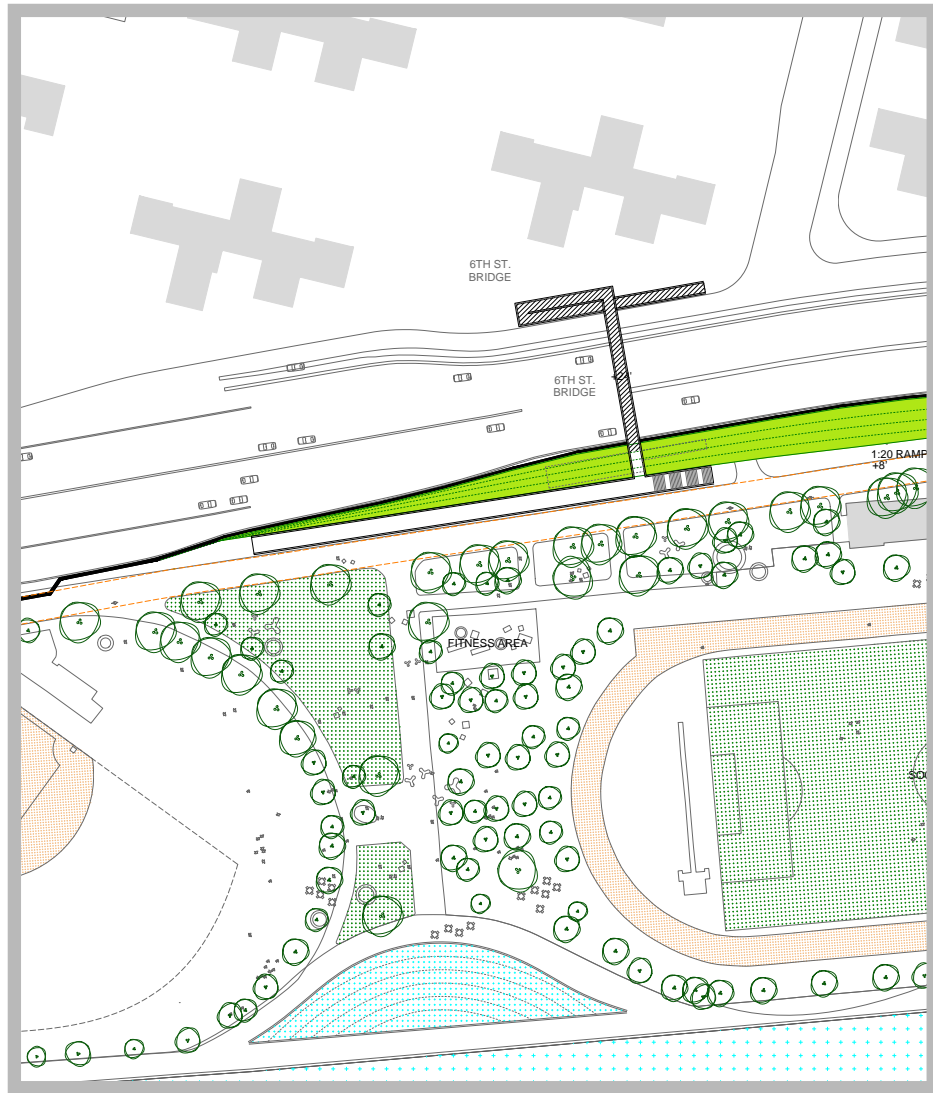
- STRONG SUPPORT FOR "PUNCH-THROUGH"
- NEW FAMILY-FRIENDLY TERRACES AND PICNIC AREAS
- GENTLE 1:20 SLOPES WHICH ALLOW FOR QUICK, EASY AND SAFE ACCESS TO THE WATERFRONT



- EXISTING RAMP CONFIGURATION
- CURRENT TRAFFIC SIGNALIZATION

EVALUATING THE ALTERNATIVES

Community feedback on the E. 6th St. Bridge Area



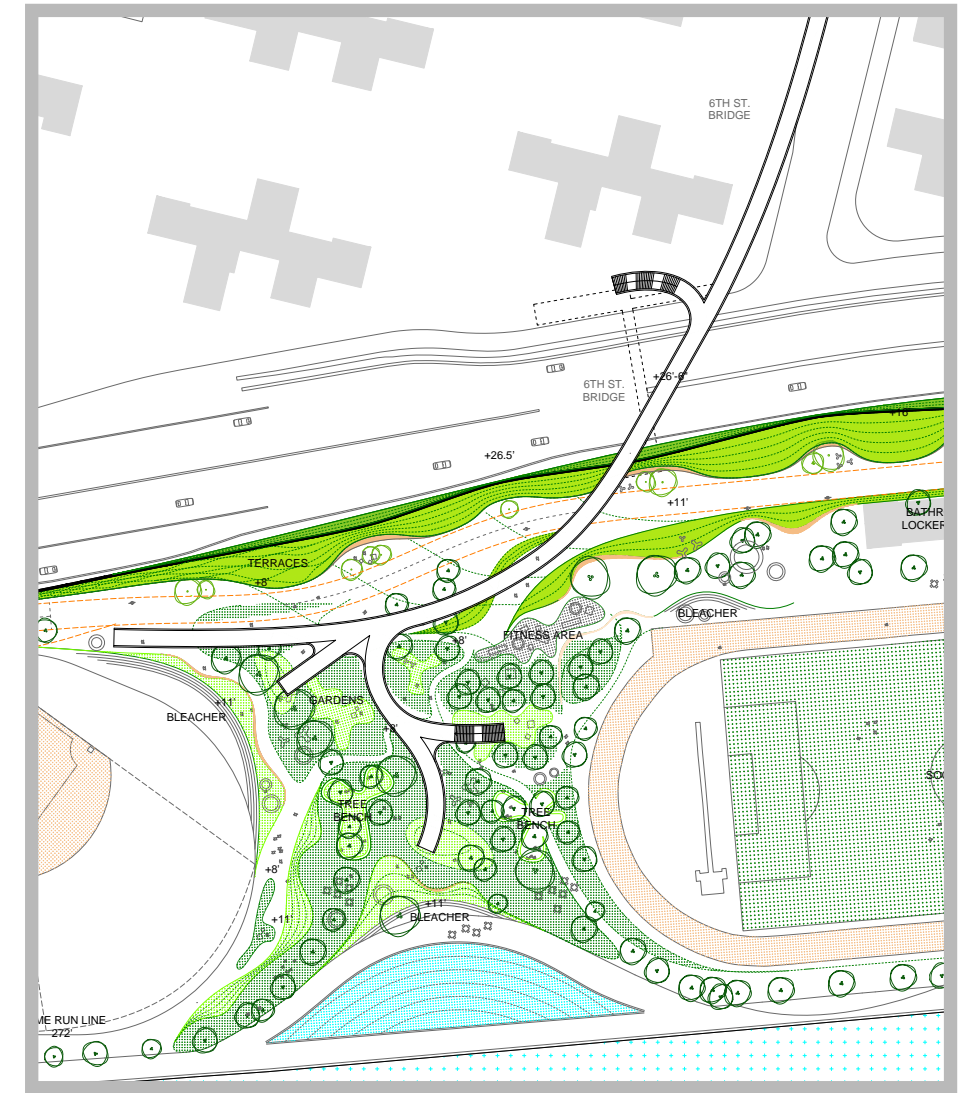
ALTERNATIVE 1

BASELINE FLOOD PROTECTION



ALTERNATIVE 2

MID-RANGE OPEN SPACE AND
ACCESS IMPROVEMENTS



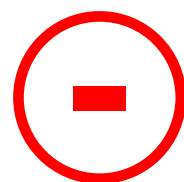
ALTERNATIVE 3

HIGH-RANGE OPEN SPACE AND
ACCESS IMPROVEMENTS

COMMUNITY FEEDBACK:



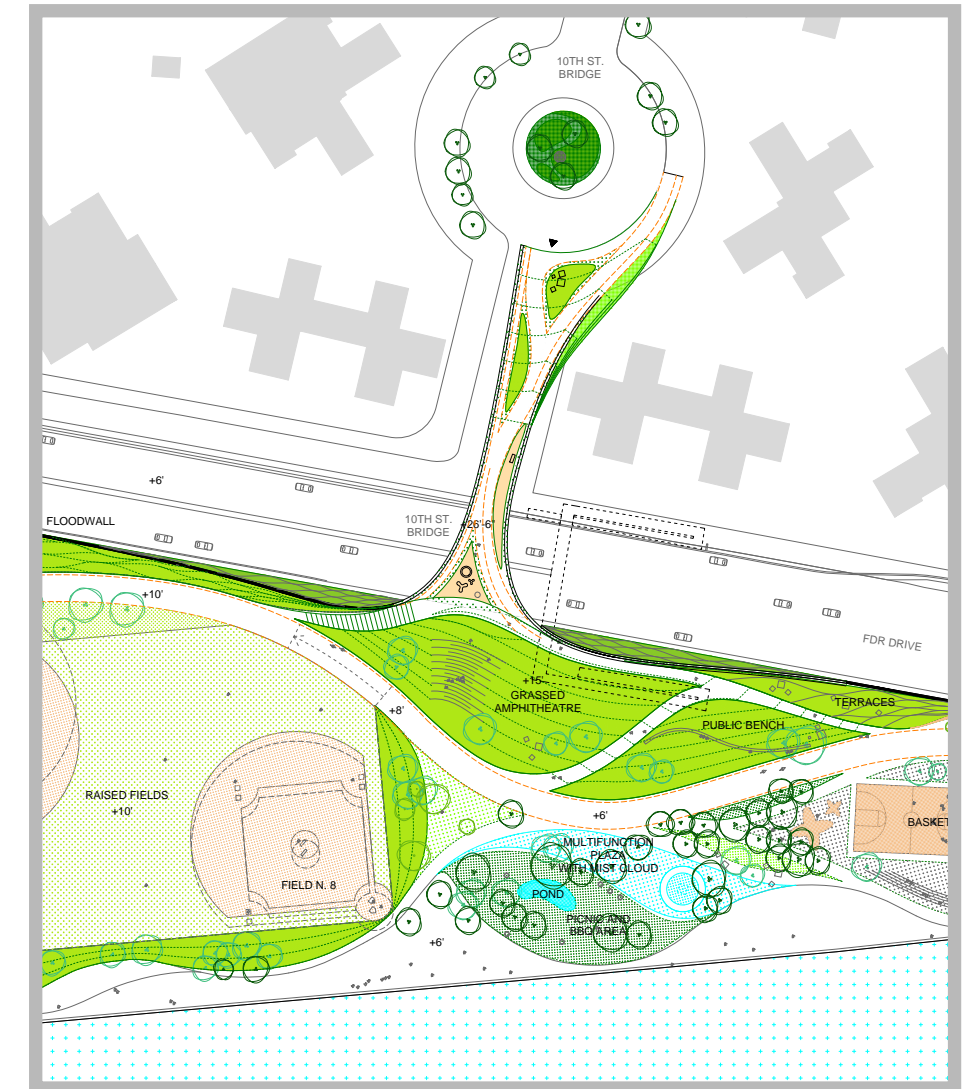
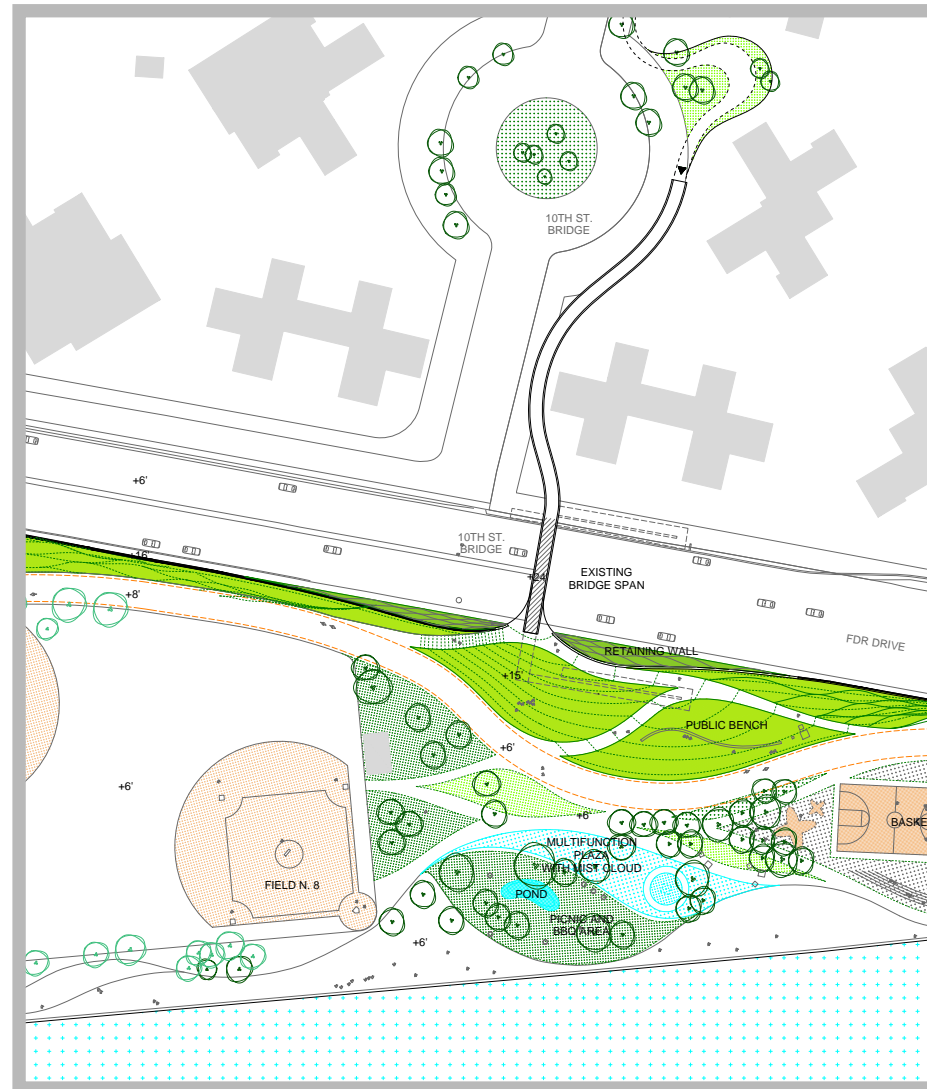
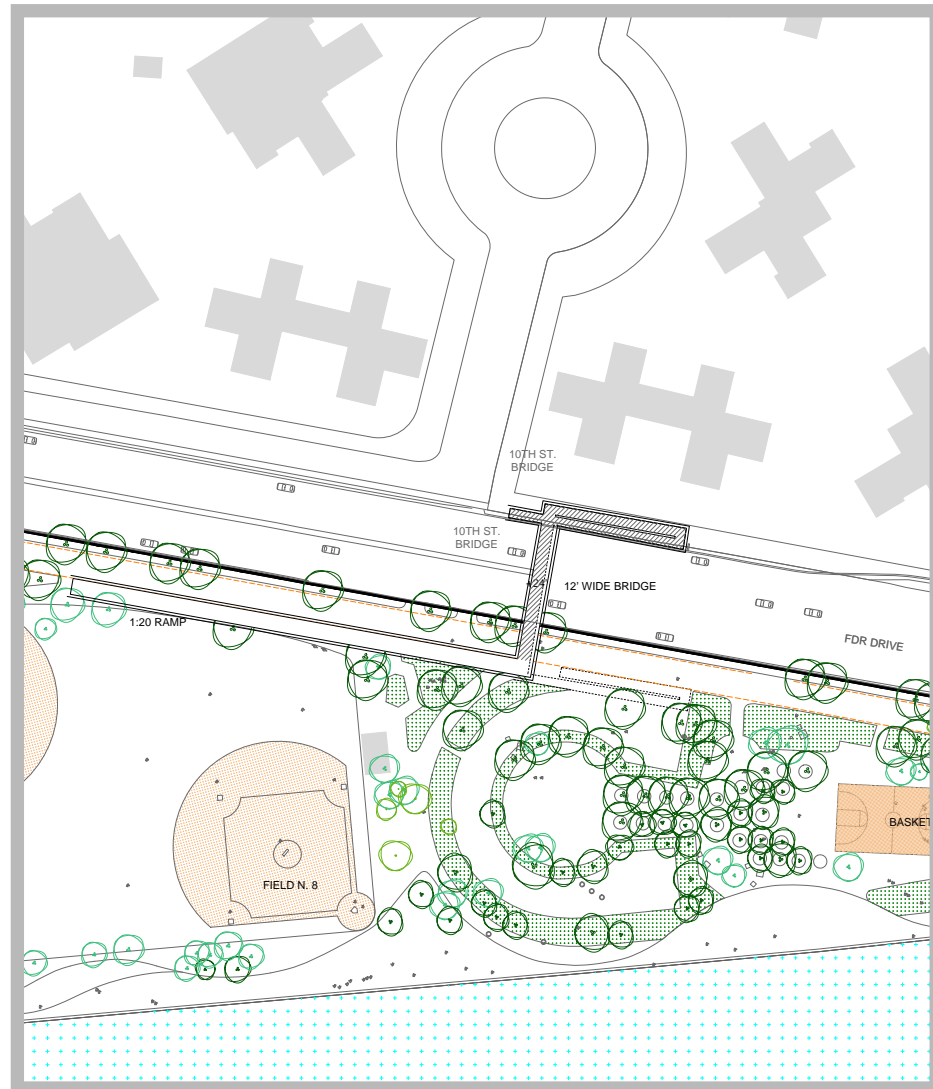
- PROVIDE ELEVATED CROSSING OVER SHARED BIKE PATH
- ADDITIONAL ACCESS POINTS TO COMPLEMENT MAIN RAMPS AND ALLOW FOR QUICK ENTRY INTO THE PARK
- EXTENDING PARK SIDE RAMPS TO BRING VISITORS CLOSER TO THE ESPLANADE



- LONG CITY-SIDE EXTENSION TOWARD E. 6TH ST.

EVALUATING THE ALTERNATIVES

Community feedback on the E. 10th St. Bridge Area



ALTERNATIVE 1

BASELINE FLOOD PROTECTION

ALTERNATIVE 2

MID-RANGE OPEN SPACE AND
ACCESS IMPROVEMENTS

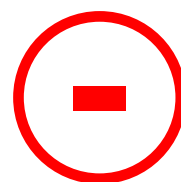
ALTERNATIVE 3

HIGH-RANGE OPEN SPACE AND
ACCESS IMPROVEMENTS

COMMUNITY FEEDBACK:



- WIDE BRIDGE SPAN AND LANDSCAPED CITY-SIDE LANDING POINT
- ACTIVATION OF 10TH ST. ROUNDABOUT
- EXTENSIVE BERM OFFERING UNPROGRAMMED SPACE IN EAST RIVER PARK, MAINTAINING



- CURRENT CITY-SIDE RAMP LOCATION
- ENCROACHMENT ON ADJACENT RIIS HOUSES

PROJECT AREA TWO
STUYVESANT COVE

STUYVESANT COVE PARK

Existing Conditions - 2050s 100-year floodplain



CONCEPTUAL DESIGN ALTERNATIVES - PA2

The ESCR team gathered feedback about three design alternatives for Stuyvesant Cove Park during the community engagement workshop on 07/28.

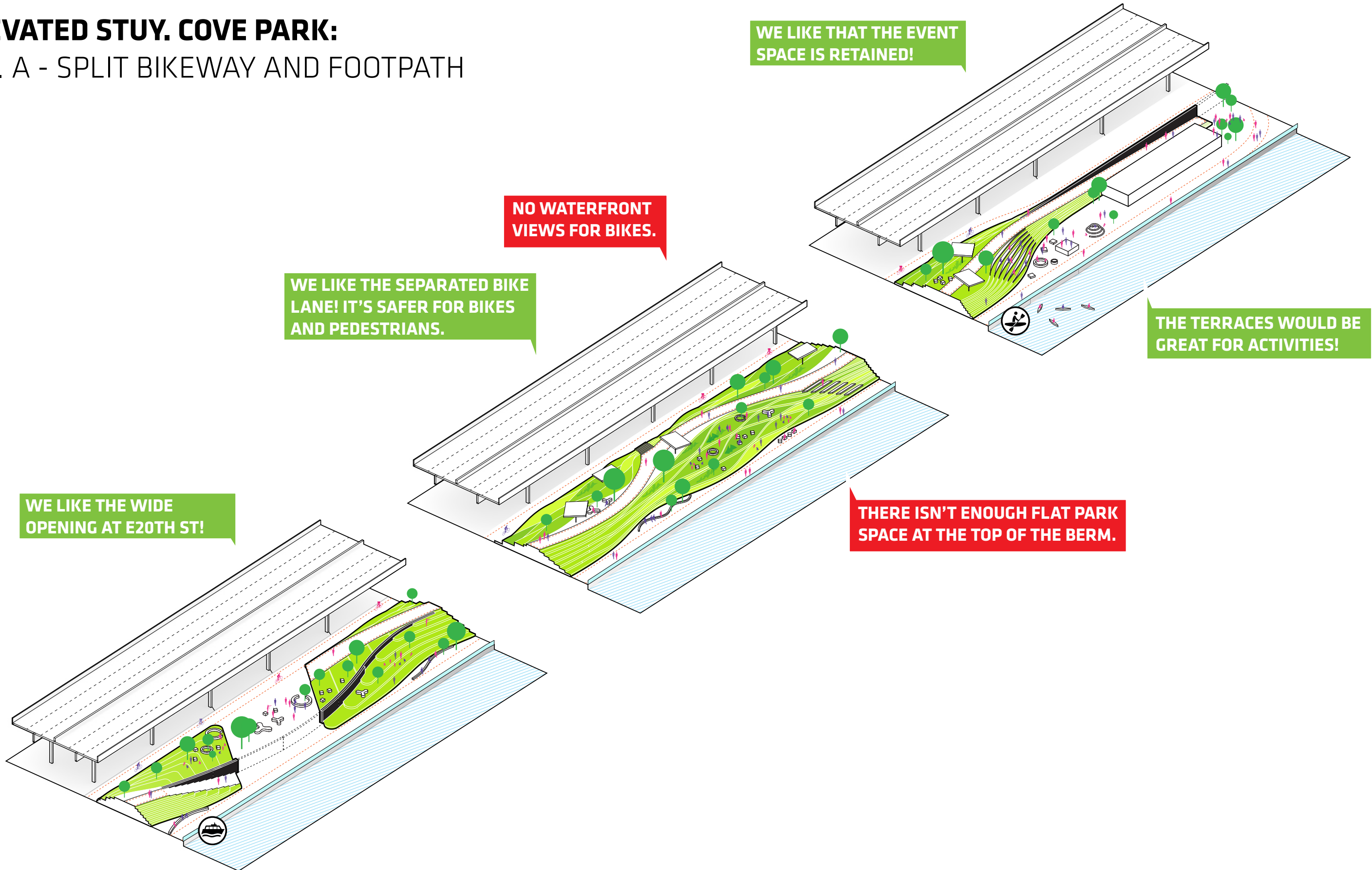


PROJECT AREA TWO
ROUND 3 COMMUNITY ENGAGEMENT
FINDINGS

CONCEPTUAL DESIGN ALTERNATIVES - PA2

Community feedback on Stuyvesant Cove Park

ELEVATED STUY. COVE PARK: ALT. A - SPLIT BIKEWAY AND FOOTPATH



CONCEPTUAL DESIGN ALTERNATIVES - PA2

Community feedback on Stuyvesant Cove Park

ELEVATED STUY. COVE PARK:

ALT. B - WATERSIDE BIKEWAY AND FOOTPATH

THE TERRACED SEATING IS GREAT, THIS COULD BE A BIG EVENT SPACE! WE LIKE THAT SOLAR TWO IS ELEVATED.

THERE ISN'T ENOUGH FLAT PARK SPACE!

WE LIKE THE IDEA THAT THE PEDESTRIAN BRIDGE CAN ACT AS FLOOD PROTECTION!

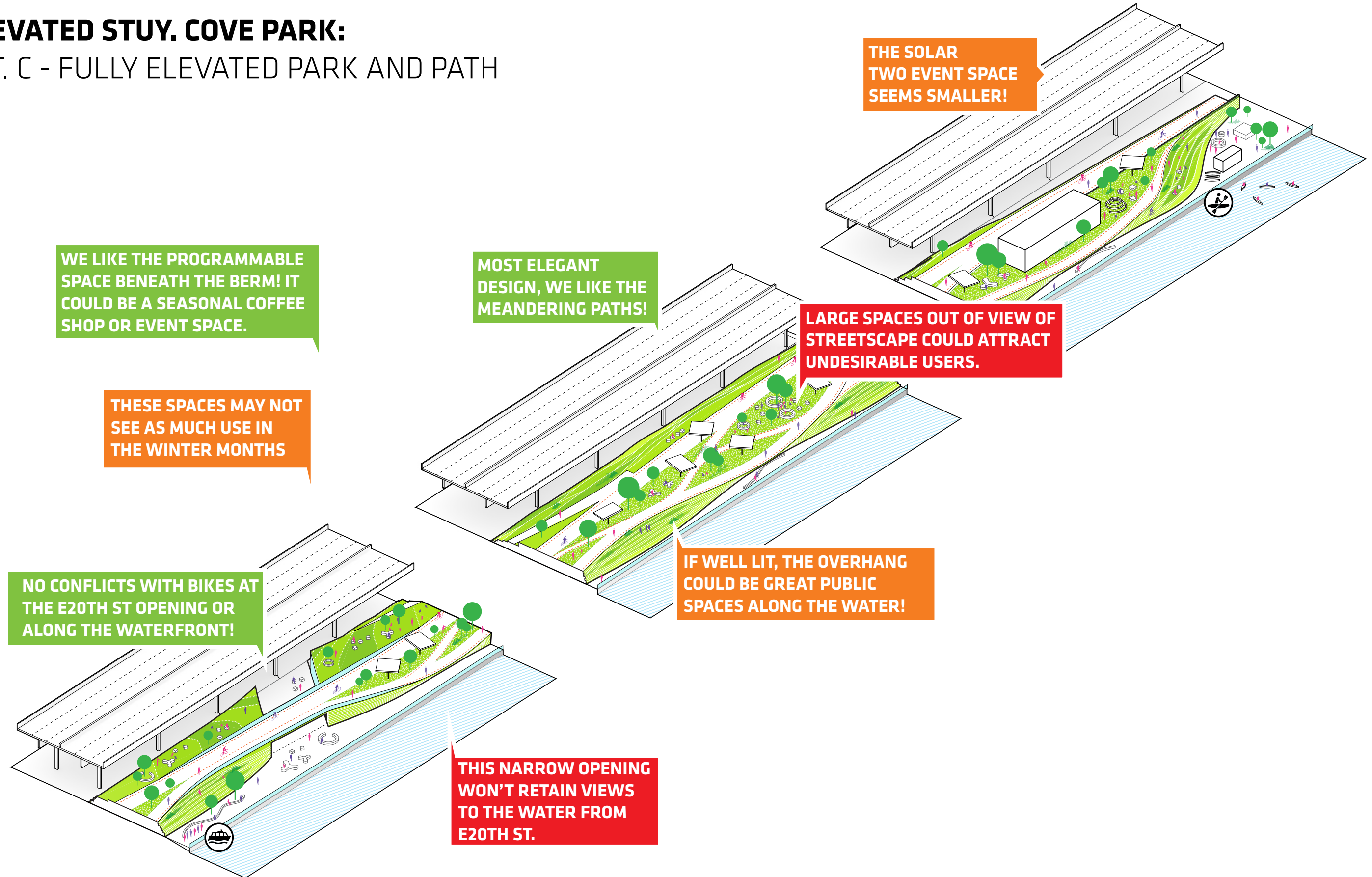
A COMBINED BIKE AND PEDESTRIAN PATH SEEMS DANGEROUS. IT WILL ENCOURAGE BIKES TO SPEED.

THIS PATHWAY IS TOO LINEAR, CURVY IS BETTER! WE NEED PLACES TO SIT AND FISH BY THE WATER.

CONCEPTUAL DESIGN ALTERNATIVES - PA2

Community feedback on Stuyvesant Cove Park

ELEVATED STUY. COVE PARK: ALT. C - FULLY ELEVATED PARK AND PATH



THE SOLAR TWO EVENT SPACE SEEMS SMALLER!

WE LIKE THE PROGRAMMABLE SPACE BENEATH THE BERM! IT COULD BE A SEASONAL COFFEE SHOP OR EVENT SPACE.

MOST ELEGANT DESIGN, WE LIKE THE MEANDERING PATHS!

LARGE SPACES OUT OF VIEW OF STREETScape COULD ATTRACT UNDESIRABLE USERS.

THESE SPACES MAY NOT SEE AS MUCH USE IN THE WINTER MONTHS

IF WELL LIT, THE OVERHANG COULD BE GREAT PUBLIC SPACES ALONG THE WATER!

NO CONFLICTS WITH BIKES AT THE E20TH ST OPENING OR ALONG THE WATERFRONT!

THIS NARROW OPENING WON'T RETAIN VIEWS TO THE WATER FROM E20TH ST.

NEXT STEPS

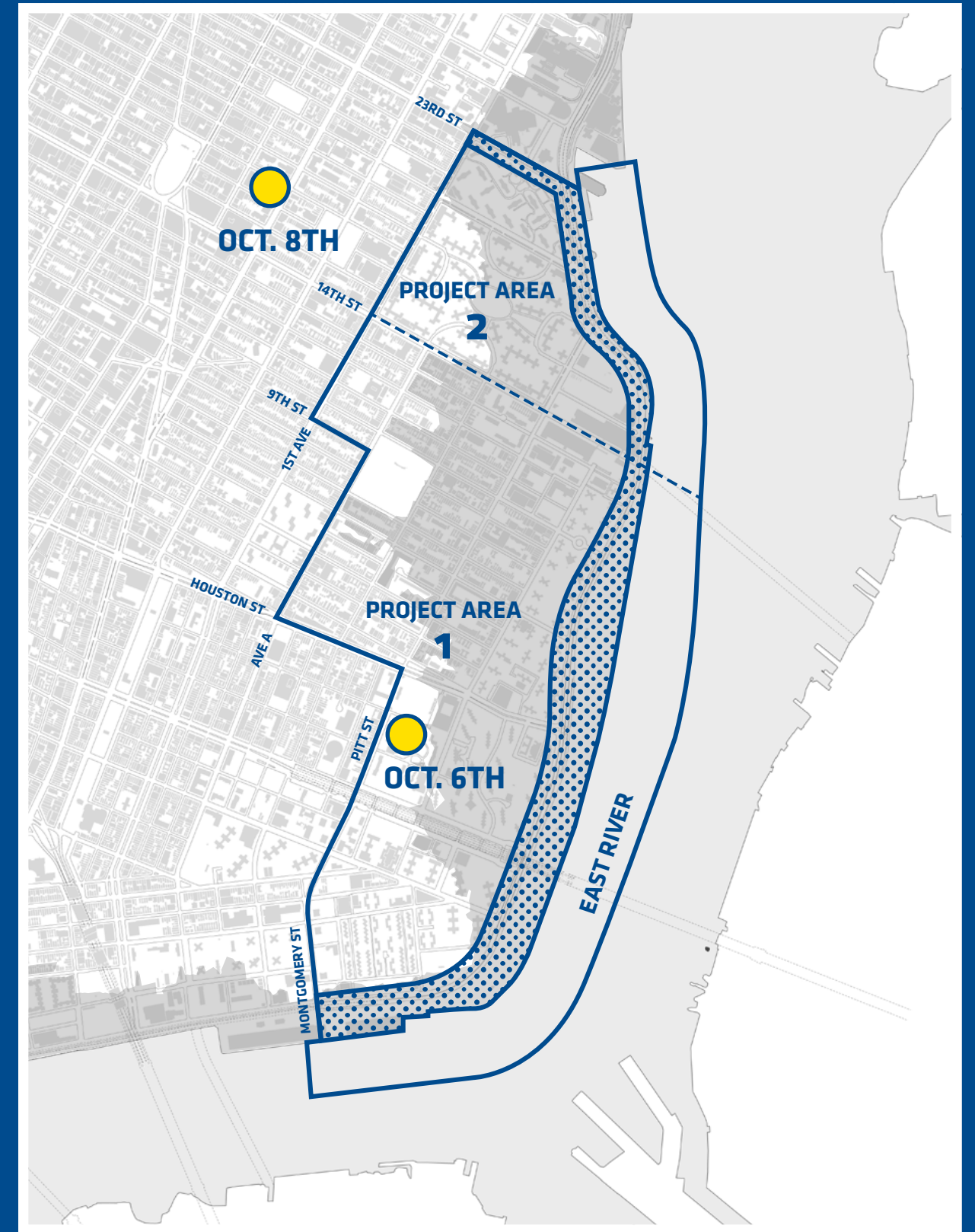
NEXT STEPS

THE NEXT SET OF COMMUNITY ENGAGEMENT MEETINGS WILL BE HELD ON:

OCTOBER 6TH FROM 5:30-7:30PM
AT GRAND ST SETTLEMENT
80 PITT STREET

OCTOBER 8TH FROM 6:30-8:30PM
AT WASHINGTON IRVING HS
40 IRVING PLACE

THE TEAM WILL BE REVIEWING ROUND 3 RESULTS, AND PRESENTING INITIAL DESIGN DIRECTION FOR PROJECT AREAS ONE AND TWO



CONCEPT DESIGN DEVELOPMENT

Design will continue to evolve through the next year.

INITIAL DESIGN DIRECTION WILL REPRESENT PRELIMINARY PROJECT ELEMENTS, TYPES, AND GENERAL LOCATIONS. OUTSTANDING ISSUES, TO BE FURTHER DEVELOPED IN THE NEXT PHASE OF DESIGN, INCLUDE:

- DETAILED BRIDGE/LANDING DESIGN
- DETAILED LANDSCAPE DESIGN
- DRAINAGE
- MAINTENANCE AND OPERATION ENTITIES

THESE, AS WELL AS MANY OTHER MORE FINE-GRAINED ISSUES, WILL BE DEVELOPED IN CLOSE CONSULTATION WITH RELEVANT COMMUNITY AND CITY STAKEHOLDERS OVER THE COMING TWO YEARS.

NEXT STEPS

ENVIRONMENTAL REVIEW AND ULURP PROCESSES

ENVIRONMENTAL IMPACT STATEMENT:

EVALUATES THE OPERATIONAL AND CONSTRUCTION ELEMENTS OF THE PROJECT

MAJOR IMPACTS ANALYZED BY EIS:

- CONSTRUCTION PERIOD
- SEQUENCING
- IMPACTS ON PARKLAND AND NEIGHBORHOOD
- URBAN DESIGN AND VISUAL RESOURCES
- NATURAL RESOURCES
- HISTORIC AND ARCHAEOLOGICAL RESOURCES
- HAZARDOUS MATERIALS

NEXT STEPS

ENVIRONMENTAL REVIEW AND ULURP PROCESSES

ENVIRONMENTAL REVIEW MILESTONES:

SEPT. 2015

PUBLIC SCOPING OUTREACH PREPARATION

OCTOBER

RELEASE DRAFT SCOPE OF WORK TO PREPARE D.E.I.S.

NOVEMBER

HOLD PUBLIC SCOPING MEETING

DECEMBER

CLOSE OF COMMENT PERIOD

JANUARY 2016

COMPLETE FINAL E.I.S SCOPING

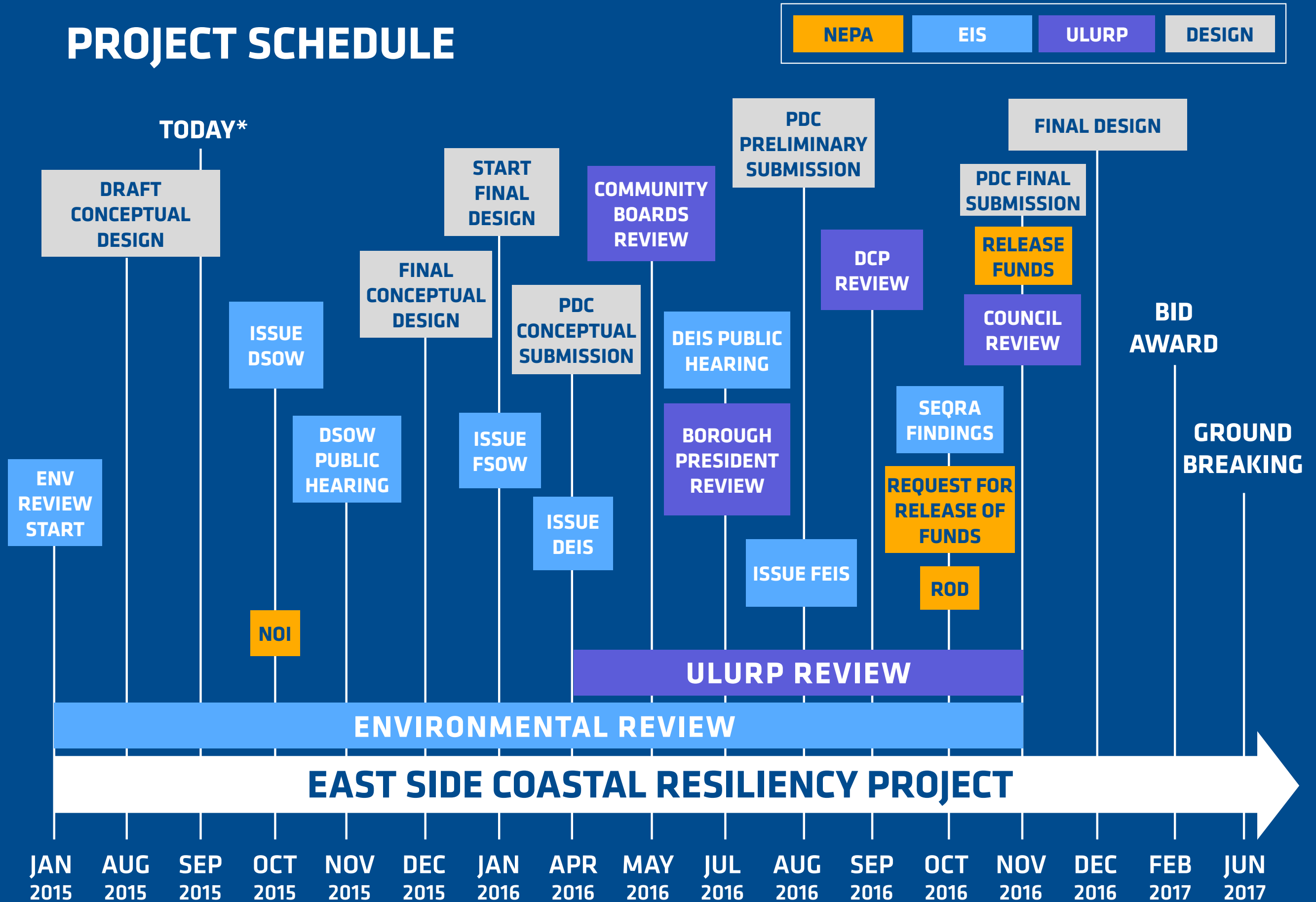
MARCH

FINALIZE PREPARATION OF D.E.I.S

NEXT STEPS

PROJECT REVIEW AND DESIGN

PROJECT SCHEDULE



#ONENYC

nyc.gov/resiliency

QUESTIONS/DISCUSSION

E: nycresiliency@cityhall.nyc.gov

Twitter: [@NYClimate](https://twitter.com/NYClimate)