



## PROJECT AREA 1 – Two Week Look Ahead

07/23/22 - 08/06/22

**PROJECT#: SANDRESM1 | BOROUGH: MANHATTAN | DATE ISSUED: 07/22/22**

The following is an anticipated work schedule for the upcoming week. **However, due to unforeseen field and weather conditions**, it may become necessary to change some scheduled work locations, operations, and dates. The community will be advised of changes.

Map Key	Date	Work Hours	Location	Operation
1	07/23/22–08/06/22	7:00 am to 3:30 pm	East River Park: South of Stanton Street	Soil stabilization activities & esplanade removal along waterfront. Deep excavation sewer work and start pile install. Tennis House demolition. <b>Anticipated construction operations on Saturdays until further notice.</b>
2	07/25/22–08/05/22	7:00 am to 3:30 pm	East River Park: Greenway between E. Houston St. & E. 10 <sup>th</sup> St.	Ongoing Con Edison utility work. See <a href="#">Advisory</a> and <a href="#">Access Plan</a> .
3	07/25/22–08/05/22	9:00 am to 5:00 pm	E. 10 <sup>th</sup> Street between FDR Drive and Avenue D	Con Edison utility work resumes.
4	07/25/22–08/05/22	7:00 am to 3:30 pm	East River Park: E. 12 <sup>th</sup> Street Lawn Area	Con Edison test pits.
5	07/25/22–08/05/22	7:00 am to 5:30 pm  9:00 pm to 5:00 am	East River Park Passive Lawn  Corlears Hook Park Flagpole area and Corlears Hook Bridge	Ongoing site and utility work, and Corlears Hook Bridge removal activities. Temporary Pedestrian Bridge at Corlears Hook open, see <a href="#">Advisory</a> . Ongoing <b>overnight partial FDR lanes closures</b> for Corlears Hook Bridge removal activities. See <a href="#">Advisory</a> .
6	07/25/22–08/05/22	9:00 am to 2:00 pm	Montgomery Street / South Street area and Various Locations	Con Edison work and test pits resume.
7	07/25/22–08/05/22	10:00 pm to 5:30 am	East River Park: Greenway between Montgomery St. & Jackson St.	Starting week of July 25 <sup>th</sup> , <b>overnight</b> roadway striping and site preparation activities will begin with <b>partial FDR lanes closures</b> . See <a href="#">Advisory</a> .

**REMINDERS:** To access open park areas use entrances at E Houston Street, E. 6<sup>th</sup> St. Bridge, or E. 10<sup>th</sup> St. Bridge.

Utility work by Con Edison may extend work hours and/or occur on weekends to facilitate utility relocations, maintenance work or inspection services.

Questions? ¿Preguntas? 问题?: Contact **Sonia Quinones** at (347) 628-8724, **Joyce Xin** at (929) 844-0408, [ESCRCL1@ddccr.com](mailto:ESCRCL1@ddccr.com), or via web inquiry: [www.nyc.gov/escr/contact](http://www.nyc.gov/escr/contact). During non-construction hours, please contact the New York City Government Services and Information Hotline at **311** or Universal Emergency Number **911**.

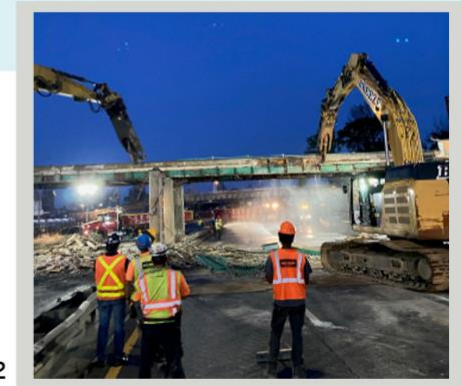
# Construction Bulletin



Numbers on the map below show the approximate location of the construction operations described on the first page. For more detailed information, see Advisories released for closure and detour posted on the website: <https://www1.nyc.gov/site/escr/project-updates/pa1-notice.page>.



Corlears Hook Pedestrian Bridge overnight dismantling on July 10, 2022



Questions? Preguntas? 问题?: Contact **Sonia Quinones** at (347) 628-8724, **Joyce Xin** at (929) 844-0408, [ESCRCCL1@ddccr.com](mailto:ESCRCCL1@ddccr.com), or via web inquiry: [www.nyc.gov/escr/contact](http://www.nyc.gov/escr/contact). During non-construction hours, please contact the New York City Government Services and Information Hotline at **311** or Universal Emergency Number **911**.