

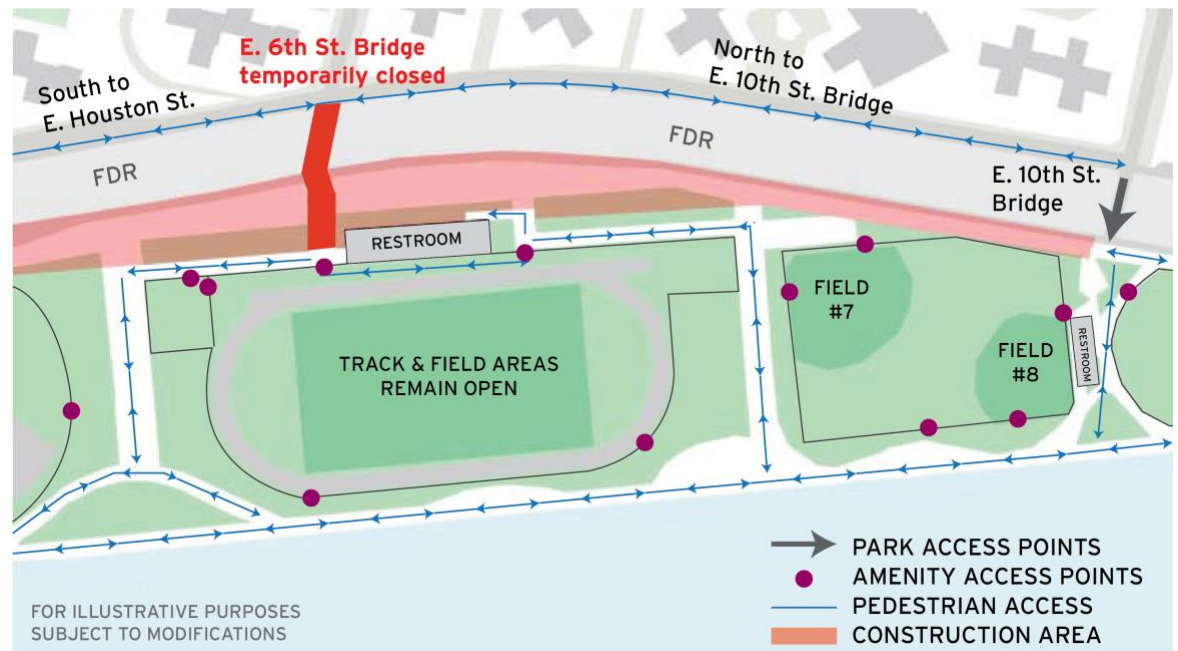
Project # SANDRESM1 | Borough: Manhattan | Issue Date: 07/29/2022

The East Side Coastal Resiliency (ESCR) Project is an initiative to provide long-term flood protection on the east side of Manhattan.

## E. 6th Street Pedestrian Bridge Temporary Closure

Wednesday August 3<sup>rd</sup>, 2022 to  
Friday August 5<sup>th</sup>, 2022

Ongoing Con Edison utility work in East River Park at the Greenway will necessitate a temporary closure of the E. 6<sup>th</sup> Street Bridge. All park amenities will remain. Access the park from E. Houston St. and the E. 10<sup>th</sup> St. Pedestrian Bridge. Pedestrian detour in effect. Please follow all posted signs.



### Questions? ¿Preguntas? 问题?

PA1 Community Construction Liaison (CCL) | Email: [ESCRCL1@ddccr.com](mailto:ESCRCL1@ddccr.com)

Sonia Quinones, para mas información llame, 347-628-8724

Joyce Xin, 欢迎中文咨询, 929-844-0408

Inquiries | Consulta en Línea | 线上咨询: [www.nyc.gov/escr/contact](http://www.nyc.gov/escr/contact)

PLEASE NOTE: Due to unforeseen conditions (weather, field conditions, etc.) it may become necessary to change some scheduled work locations and operations. During non-construction hours emergency situations, please contact the New York City Government Services and Information Hotline at 311 or Universal Emergency Number 911.



# ACCESS PLAN



## PROJECT AREA 1 | EAST RIVER PARK PEDESTRIAN ACCESS PLAN

As of July 29, 2022

**E. 6<sup>th</sup> Street Bridge temporary closure from Wednesday, August 3, 2022 to Friday, August 5, 2022**



Questions? ¿Preguntas? 问题?: Contact **Sonia Quinones** at (347) 628-8724, **Joyce Xin** at (929) 844-0408, [ESCRCCCL1@ddccr.com](mailto:ESCRCCCL1@ddccr.com), or via web inquiry: [www.nyc.gov/escr/contact](http://www.nyc.gov/escr/contact).  
During non-construction hours, please contact the New York City Government Services and Information Hotline at **311** or Universal Emergency Number **911**.