

Epi Data Tables

New York City Department of Health and Mental Hygiene

March 2013, No. 24

Self-Rated General Health in New York City

Data Tables

Table 8 Fair or poor self-rated general health in NYC and the United States, 2002-2011
Figure 1.

Table 2. Fair or poor self-rated general health among NYC adults with and without chronic conditions, 2011

Table 3. Fair or poor self-rated general health among NYC adults by demographic characteristics, 2011

Table 4. Fair or poor self-rated general health among NYC adults by geographical characteristics, 2011

Data Sources

CHS: The Community Health Survey (CHS) is a survey of about 10,000 adults aged 18 and older, conducted annually by the Health Department. Estimates presented here are age-adjusted to the US 2000 Standard Population, except for age-specific estimates. The CHS has included adults with landline phones since 2002 and, starting in 2009, also has included adults who can be reached only by cell phone. Starting in 2011, CHS weighting methods were updated to incorporate Census 2010 data and additional demographic characteristics. For survey details, visit www.nyc.gov/health/survey.

BRFSS: The Behavioral Risk Factor Surveillance Survey (BRFSS) is the world's largest, on-going telephone health survey system, tracking health conditions and risk behaviors in the United States yearly since 1984. Currently data are collected in all 50 states, the District of Columbia, Puerto Rico, the U.S. Virgin Islands, and Guam. For more information, visit www.cdc.gov/brfss/.

To access the related Epi Data Brief, go to www.nyc.gov/html/doh/downloads/pdf/epi/databrief24.pdf

Table 1. Fair or poor self-rated general health status in NYC and the United States, 2002-2011

Source: NYC Community Health Survey 2002-2011; Behavioral Risk Factor Surveillance Survey, 2002-2011

Year	NYC		United States	
	Percent	95% Confidence Interval	Percent	95% Confidence Interval
2002	19.5	(18.5-20.5)	16.0	(15.8-16.3)
2003	21.1	(20.1-22.1)	16.1	(15.9-16.4)
2004	22.2	(21.3-23.2)	16.4	(16.1-16.7)
2005	22.6	(21.6-23.7)	16.6	(16.3-16.9)
2006	21.5	(20.6-22.5)	16.3	(16.0-16.6)
2007	21.9	(20.9-22.8)	16.5	(16.2-16.8)
2008	20.5	(19.4-21.6)	16.1	(15.9-16.3)
2009	19.5	(18.5-20.5)	15.8	(15.5-16.0)
2010	20.9	(19.7-22.2)	15.7	(15.5-16.0)
2011	21.8	(20.4-23.3)	17.7	(16.1-18.3)

Data are age-adjusted to the United States 2000 Standard Population.

95% confidence intervals are a measure of estimate precision. The wider the interval the more imprecise the estimate.

Figure 1. Fair or poor self-rated general health status in NYC and the United States, 2002-2011

Source: NYC Community Health Survey 2002-2011; Behavioral Risk Factor Surveillance Survey, 2002-2011

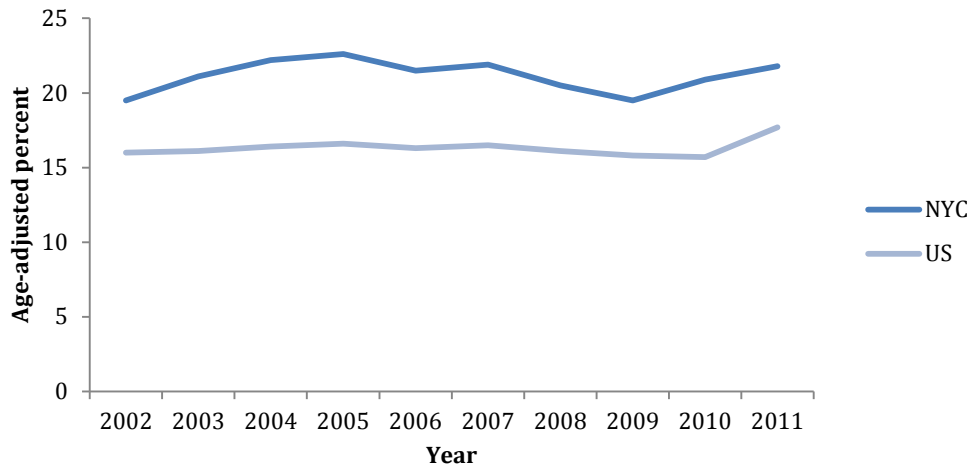


Table 2. Fair or poor self-rated general health among NYC adults with or without chronic conditions, 2011
Source: NYC Community Health Survey, 2011

	Percent	95% Confidence Interval	T-test p-value
No hypertension	16.9	(15.2-18.8)	ref
Hypertension	33.1	(28.7-37.7)	<0.001
Not obese	18.8	(17.3-20.5)	ref
Obese	31.7	(28.2-35.5)	<0.001
No diabetes	18.9	(17.5-20.5)	ref
Diabetes	44.7	(36.7-53.0)	<0.001
No hypertension, obesity, or diabetes	14.4	(12.5-16.5)	ref
Hypertension, obese, and diabetes	60.7	(46.2-73.5)	<0.001

Data are age-adjusted to the United States 2000 Standard Population.

95% confidence intervals are a measure of estimate precision. The wider the interval the more imprecise the estimate.

Bold indicates significant estimates ($p < 0.05$).

Table 3. Fair or Poor Self-Rated General Health among NYC adults by demographic characteristics, 2011

Source: NYC Community Health Survey, 2011

	Percent	95% Confidence Interval	T-test p-value
Age Group			
18-24	12.1	(8.3-17.2)	ref
25-44	12.6	(10.5-15.0)	0.836
45-64	27.7	(25.1-30.5)	<0.001
65+	40.6	(37.0-44.4)	<0.001
Race/Ethnicity			
White	12.3	(10.8-14.0)	ref
Black	19.3	(16.5-22.5)	<0.001
Hispanic	33.7	(30.6-37.0)	<0.001
Asian	31.0	(26.2-36.2)	<0.001
Other	19.8	(12.1-30.7)	0.118
Household Income (% of FPL)*			
<100% FPL (lowest income)	35.6	(32.1-39.3)	<0.001
100 to 200% FPL	28.9	(24.9-33.1)	<0.001
200 to 400% FPL	19.9	(16.3-24.1)	<0.001
400 to 600% FPL	9.9	(7.5-12.9)	0.010
>600% FPL (highest income)	5.6	(4.1-7.7)	ref
Education^			
Less than High School	42.7	(37.9-47.6)	ref
High School Graduate	24.5	(21.5-27.9)	<0.001
Some College	18.1	(15.6-20.9)	<0.001
College Graduate	12.6	(10.9-14.4)	<0.001

Except for age-specific estimates, data are age-adjusted to the United States 2000 Standard Population.

95% confidence intervals are a measure of estimate precision. The wider the interval the more imprecise the estimate.

Bold indicates significant estimates (p<0.05).

*FPL: Federal poverty level

^Education analysis is restricted to NYC adults aged 25 and older

Table 4. Fair or Poor Self-Rated General Health among NYC adults by geographical characteristics, 2011
Source: NYC Community Health Survey, 2011

	Percent	95% Confidence Interval	T-test p-value
Borough			
Bronx	26.0	(22.6-29.7)	<0.001
Brooklyn	25.8	(23.0-28.8)	<0.001
Manhattan	15.9	(13.0-19.4)	ref
Queens	21.6	(19.0-24.5)	0.008
Staten Island	13.3	(9.5-18.3)	0.335
Neighborhood Poverty*			
Low poverty	12.9	(10.6-15.6)	ref
Medium poverty	21.0	(18.7-23.4)	<0.001
High poverty	25.4	(22.1-29.1)	<0.001
Very high poverty	28.2	(25.1-31.6)	<0.001
Nativity			
US Born	16.5	(14.9-18.2)	ref
Foreign Born	28.6	(26.1-31.2)	<0.001

Data are age-adjusted to the United States 2000 Standard Population

95% confidence intervals are a measure of estimate precision. The wider the interval the more imprecise the estimate.

Bold indicates significant estimates ($p < 0.05$)

*Neighborhood poverty level is defined by the percent of individuals in a NYC zip code area with incomes below 100% of the federal poverty level, separated into four groups: low-poverty (<10%), medium-poverty (10-19%), high-poverty (20%-29%), and very-high-poverty (>30%).