



# NYC Department of Correction at a Glance

Information for the first 6 months of FY2021



Average Daily Population 4,389

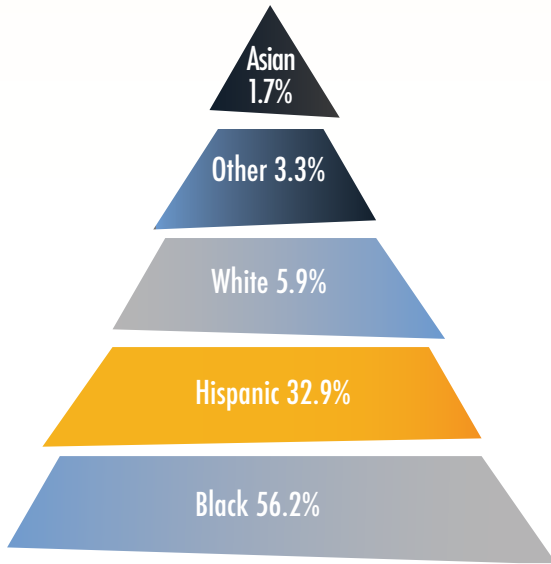
Average Number of Detainees Transported to Court Daily 224

Average Daily Visitors 203

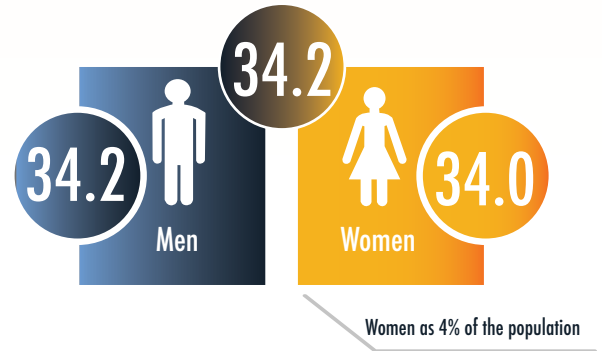
Total admissions 7,867

Total discharges 6,842

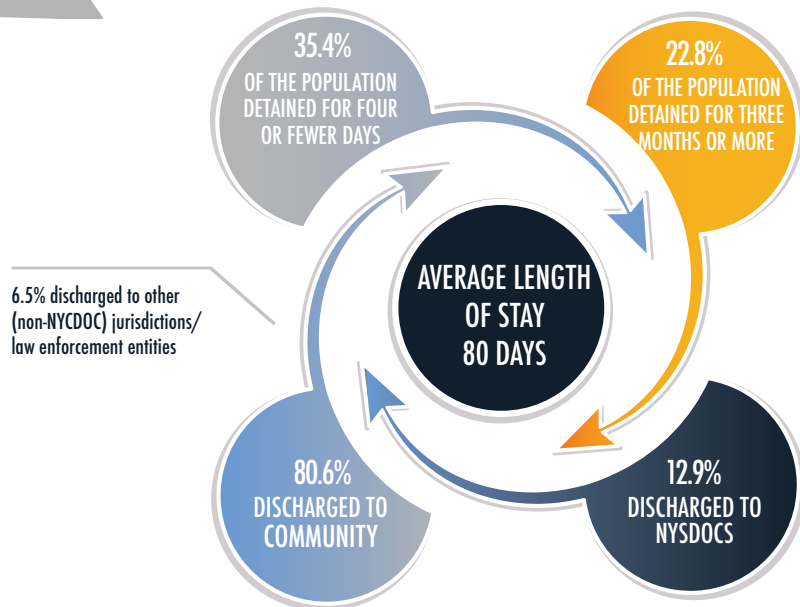
## RACIAL/ETHNIC BREAKDOWN



## AVERAGE AGE OF A DETAINEE ADMITTED TO DOC



## AVERAGE LENGTH OF STAY



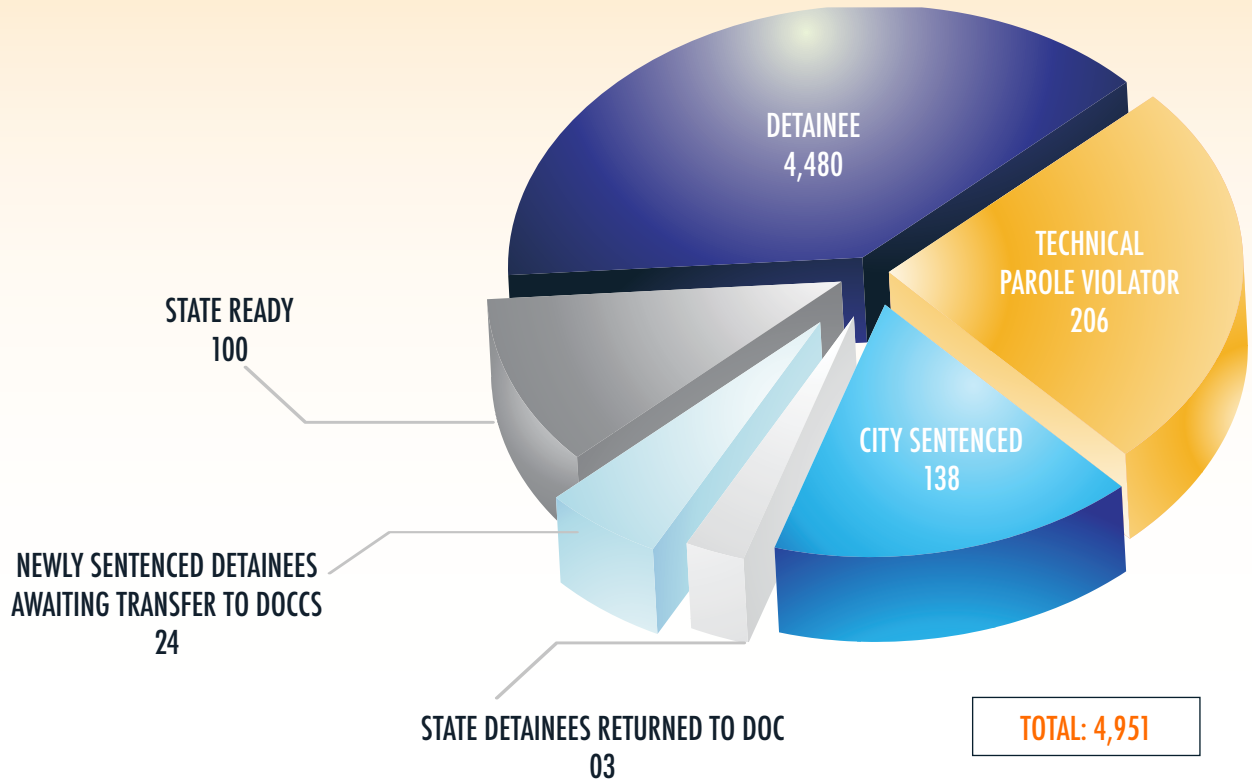


# NYC Department of Correction at a Glance

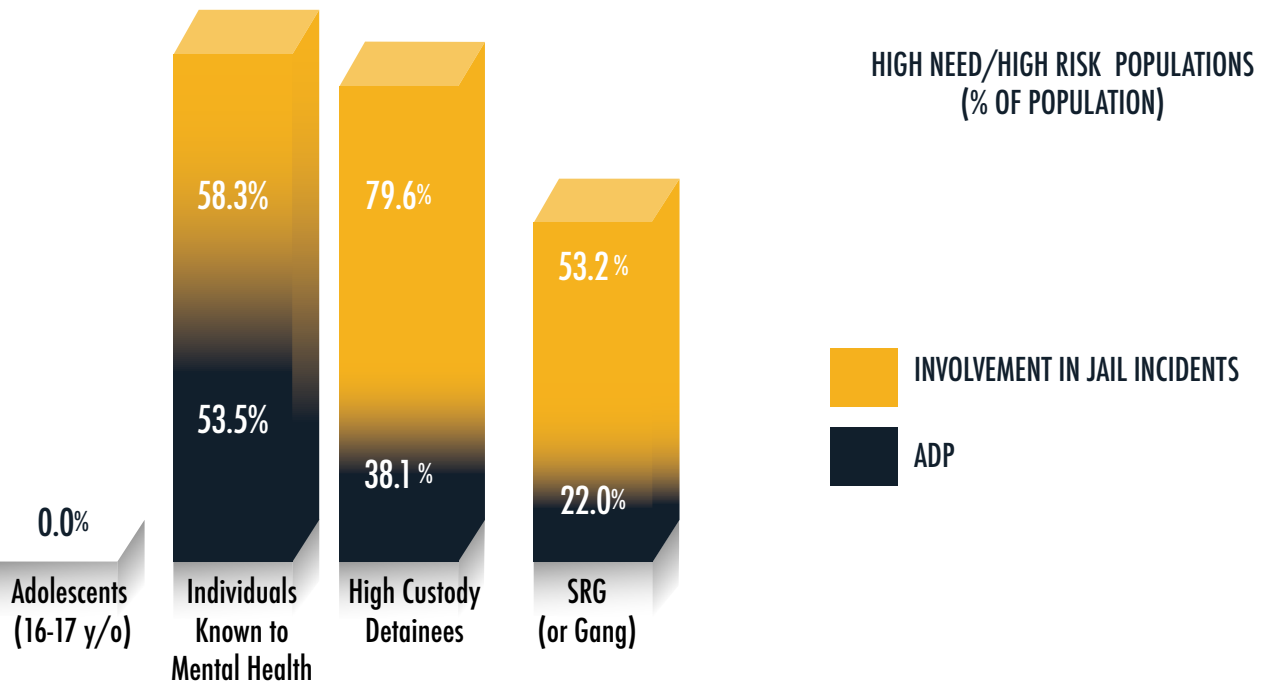
Information for the first 6 months of FY2021

## TOTAL POPULATION BY CATEGORY

Based on a snapshot as of 12/31/2020



## SPECIAL POPULATION





# NYC Department of Correction at a Glance

Information for the first 6 months of FY2021

## ADP BY TOP ARREST CHARGE BASED ON FIRST 6 MONTHS FY21 CROSS-SECTIONS

CHARGE CATEGORY	ADP
MURDER/ATT MURDER/MANSLTER	1,085
ROBBERY	626
ASSAULT	440
BURGLARY	397
WARR/HOLDS	355
WEAPONS	337
OTHER FELONIES	276
OTHER SEXUAL OFFENSES	176
DRUG FEL POSSESS	122
OTHER MISD	118
RAPE/ATT RAPE	99
DRUG FEL SALE	93
OTHER	76
MISD ASSAULT	64
GRAND LARCENY	61
MISD LARCENY	27
MISSING	17
DRUG MISD	14
VEHICULAR	12
MISD WEAPONS	7
LOITER/PROSTITU	2
VIOLATIONS	1