



NYC Department of Correction at a Glance

Information for the 12 months of FY2020



Average Daily Population 5,841

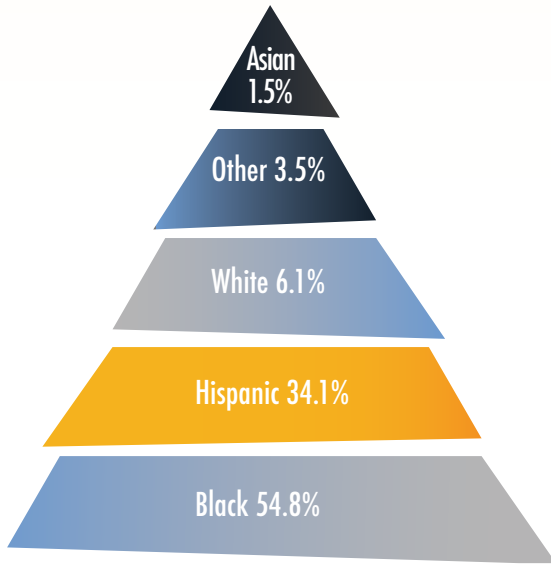
Average Number of Detainees Transported to Court Daily 417

Average Daily Visitors 486

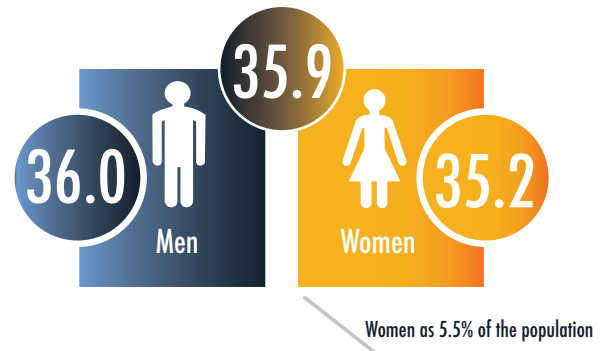
Total admissions 23,317

Total discharges 26,787

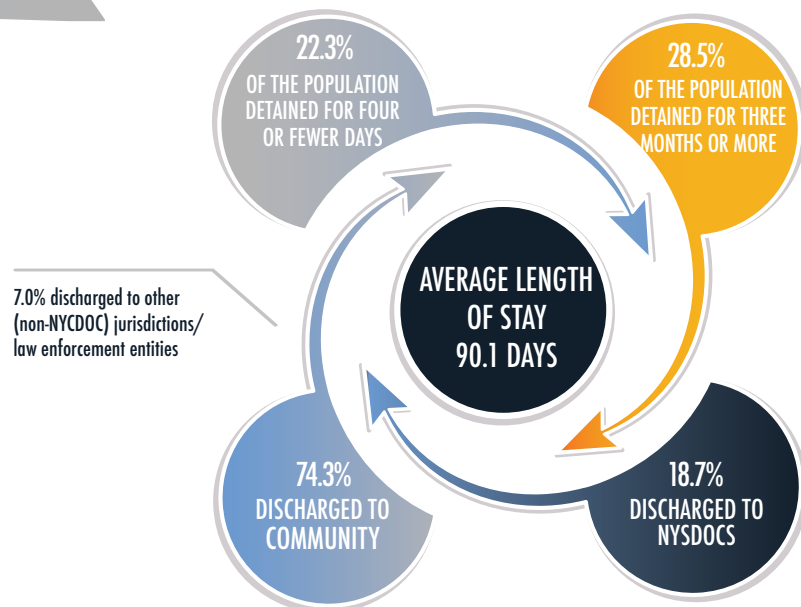
RACIAL/ETHNIC BREAKDOWN



AVERAGE AGE OF A DETAINEE ADMITTED TO DOC



AVERAGE LENGTH OF STAY



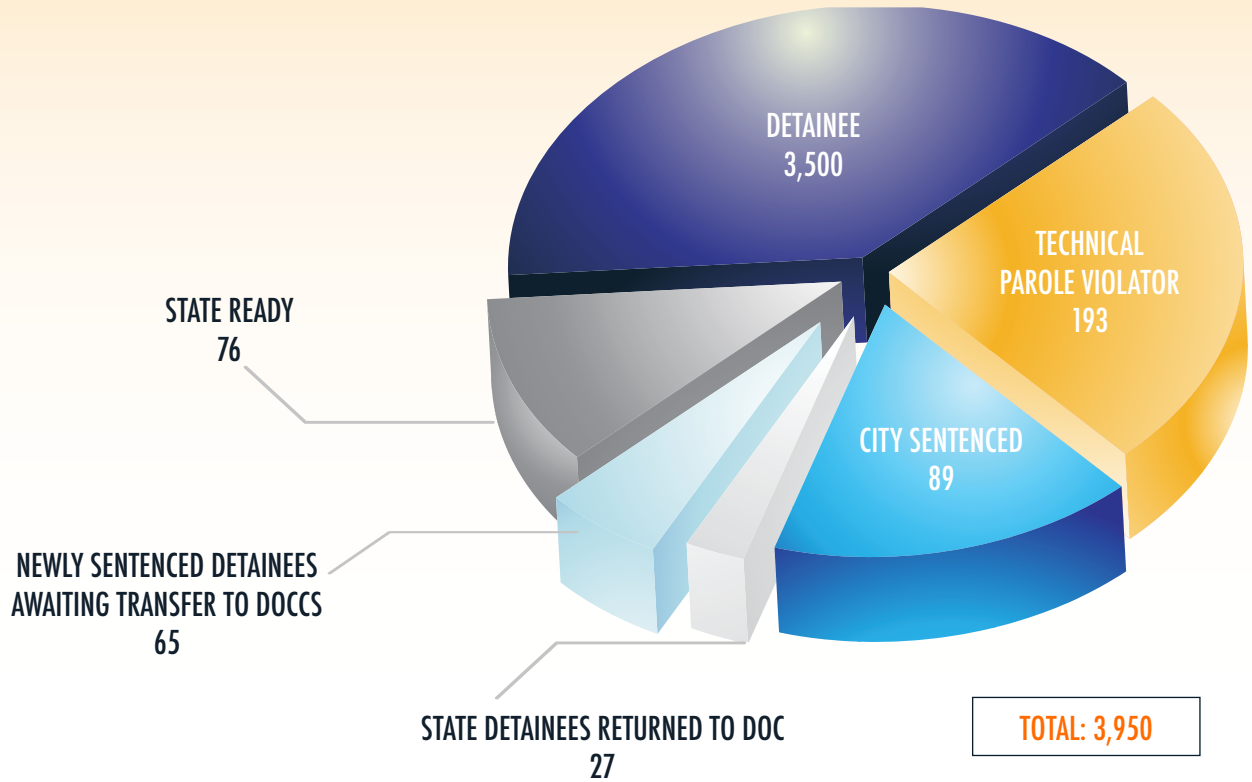


NYC Department of Correction at a Glance

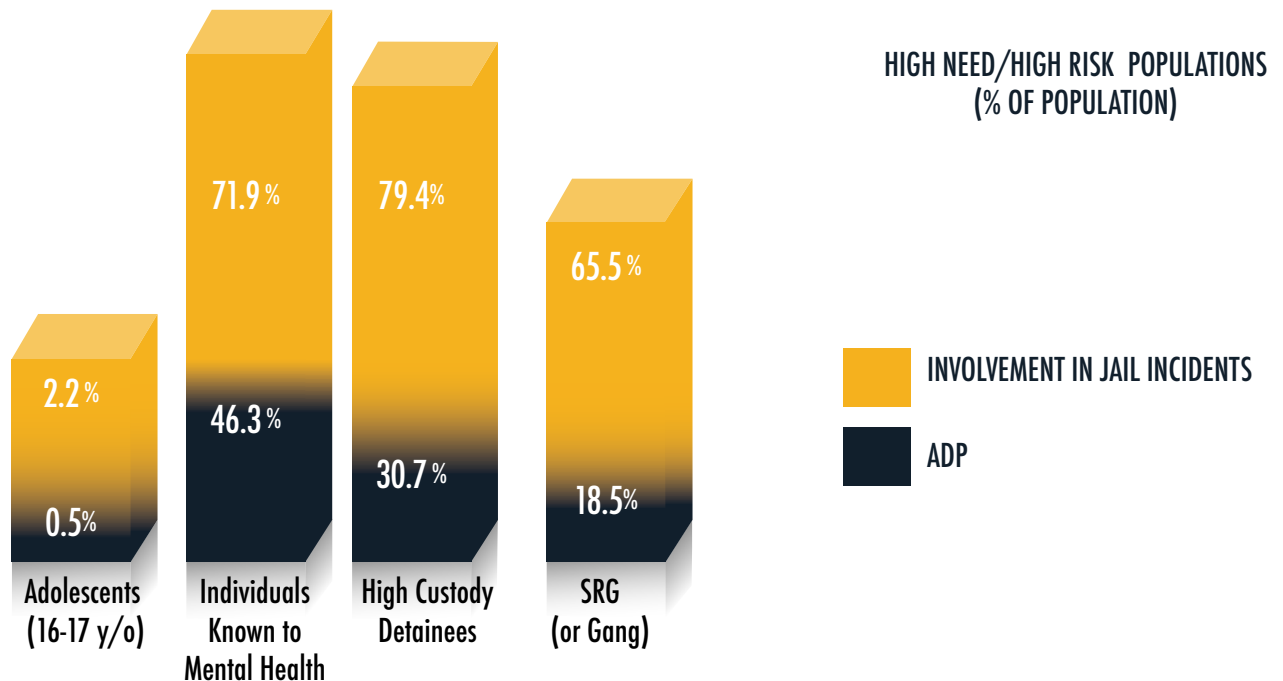
Information for the 12 months of FY2020

TOTAL POPULATION BY CATEGORY

Based on a snapshot as of 6/29/2020



SPECIAL DETAINEE POPULATION





NYC Department of Correction at a Glance

Information for the 12 months of FY2020

ADP BY TOP ARREST CHARGE BASED ON 12 MONTHS FY20 CROSS-SECTIONS

CHARGE CATEGORY	ADP
MURDER/ATT MURDER/MANSLTER	947
WARR/HOLDS	753
ROBBERY	692
ASSAULT	529
BURGLARY	500
OTHER FELONIES	444
WEAPONS	380
DRUG FEL POSSESS	261
DRUG FEL SALE	255
OTHER MISD	221
OTHER SEXUAL OFFENSES	195
GRAND LARCENY	163
MISD ASSAULT	116
MISD LARCENY	111
RAPE/ATT RAPE	100
DRUG MISD	63
VEHICULAR	46
OTHER	44
MISD WEAPONS	37
MISSING	22
LOITER/PROSTITU	4
VIOLATIONS	4