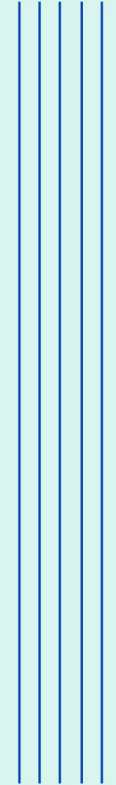


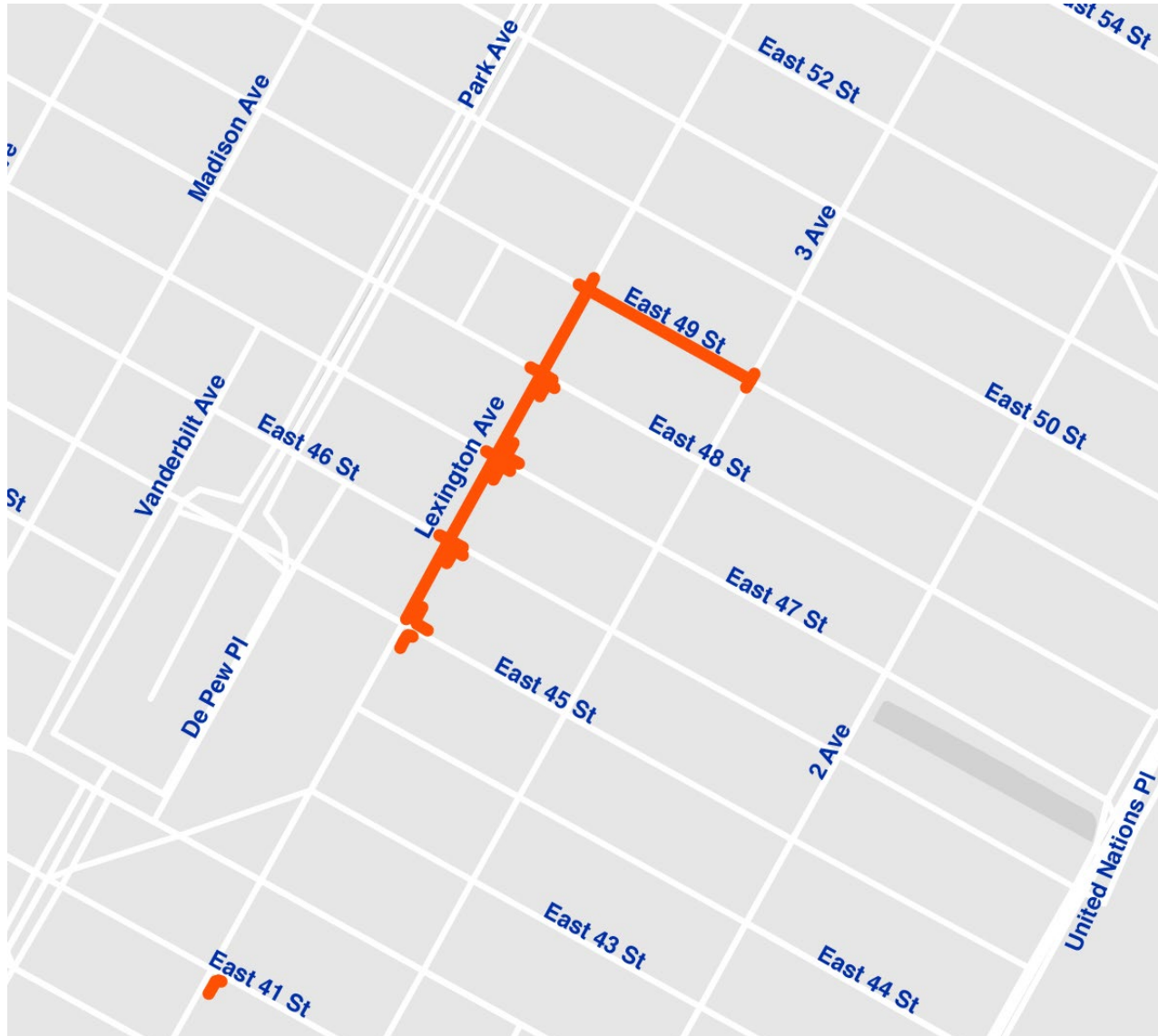
HWMMLEXAV – Lexington Ave Pedestrian Safety Improvements



OVERVIEW

1. Introduction
2. Project Scope & Timeline
3. Community Outreach
4. Q&A

Lexington Ave Pedestrian Safety, Manhattan



NTP: **October 2, 2023**

Substantial Completion: **October 2026**

Location: **Manhattan > CB5 & CB6**

Design Builder: **Triumph/NV5**

Why Design-Build?



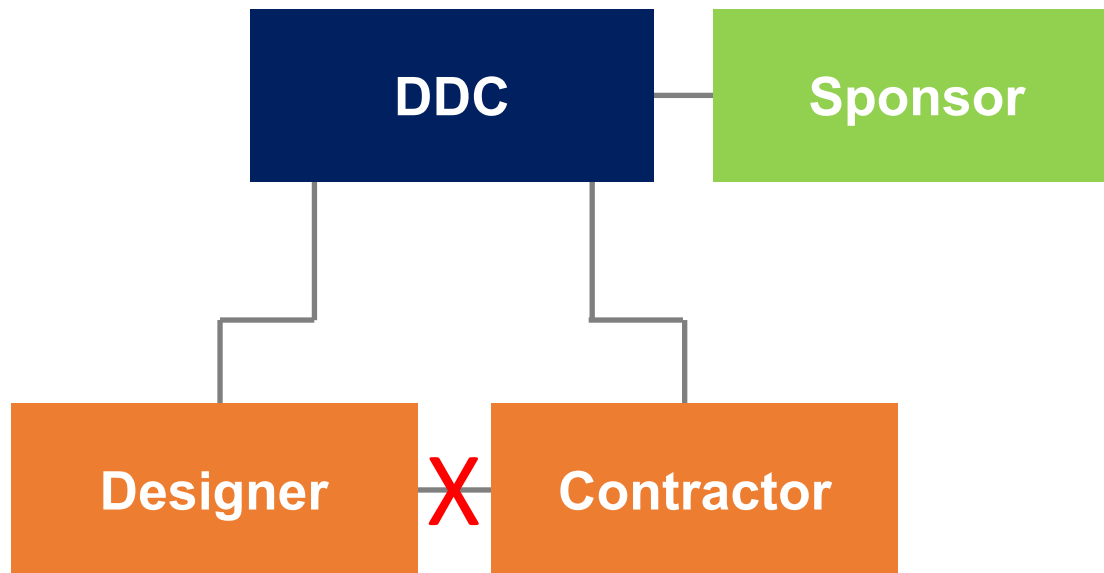
The City of New York is committed to achieving excellence in design and construction across its portfolio of public works.

With Design-Build project delivery, the City expects to benefit from:

- **Schedule, Schedule, Schedule**
- Established Accurate Project Budget (Design + Construction)
- Team coordination and collaboration, with construction expertise in the design process and design expertise in the construction process

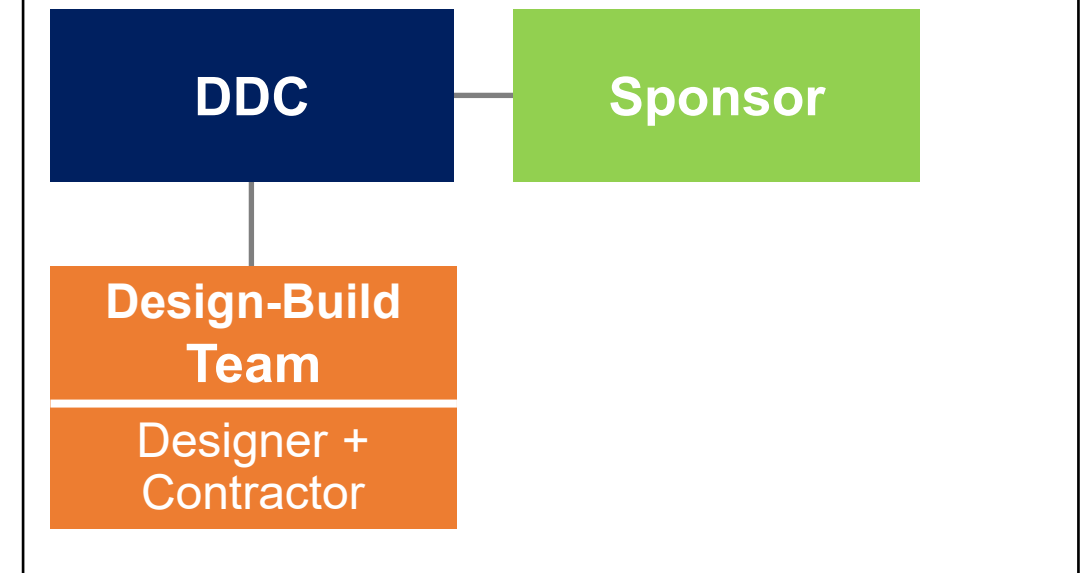
Why Design-Build?

Design-Bid-Build



- No Contractual relationship between Designer and Contractor
- City required to maintain multiple independent contracts
- No construction input duration
- Construction Budget determined years after Design Started

Design-Build



- Collaborative Team Working together Day 1
- Design + Contractor have a shared responsibility to complete project on time and on budget
- No Finger Pointing between Design and Contractor on Responsibility Issues
- Construction Staff involved in Design to ensure feasibility

OVERVIEW

1. Introduction
- 2. Project Scope & Timeline**
3. Community Outreach
4. Q&A

PROJECT INTENT & GOALS

OVERVIEW (SCOPE):

NYC DOT

- Construction seven (7) curb and sidewalk extensions along the east side of Lexington Avenue between East 41st and East 48th Streets (near Grand Central Terminal)
- Upgrade all pedestrian ramps at all five intersections receiving safety Improvements (APS)

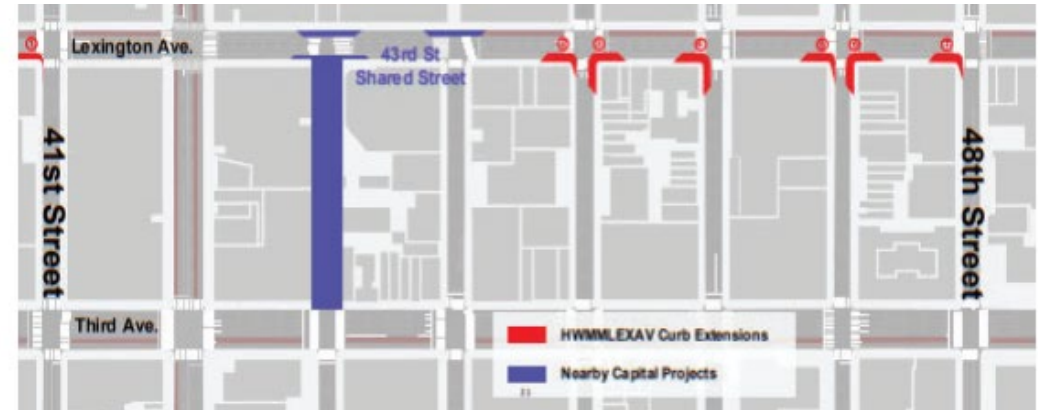
NYC DEP

- Water Main replacement on Lexington Ave from East 45th Street to East 49th Street on the east side of the roadway and an additional water main replacement on 49th Street between Lexington Ave and 3rd Ave.

Project Intent & Goals

Project Street Elements

- A. Curb Extensions
- B. Pedestrian Ramp Upgrades
- C. Incidental Sewer / Drainage Work
- D. Traffic Signals/Street Light Re-locations
- E. Accessible Pedestrian Signals (APS) Upgrades
- F. Wayfinding Signage
- G. Pavement Markings
- H. Incidental Coordination with CitiBike, Street Furniture, LinkNYC, etc.



#	Intersection	Corner	Type	Street Crossing
1	Lexington Avenue & East 41st Street	Southeast	Half	Lexington Avenue
2	Lexington Avenue & East 45th Street	Southeast	Half	Lexington Avenue
3	Lexington Avenue & East 45th Street	Northeast	Full	Both Lexington & East 45th St
4	Lexington Avenue & East 46th Street	Southeast	Full	Both Lexington & East 46th St
5	Lexington Avenue & East 47th Street	Southeast	Half	Lexington Avenue
6	Lexington Avenue & East 47th Street	Northeast	Full	Both Lexington & East 47th St
7	Lexington Avenue & East 48th Street	Southeast	Half	Lexington Avenue

Project Intent & Goals

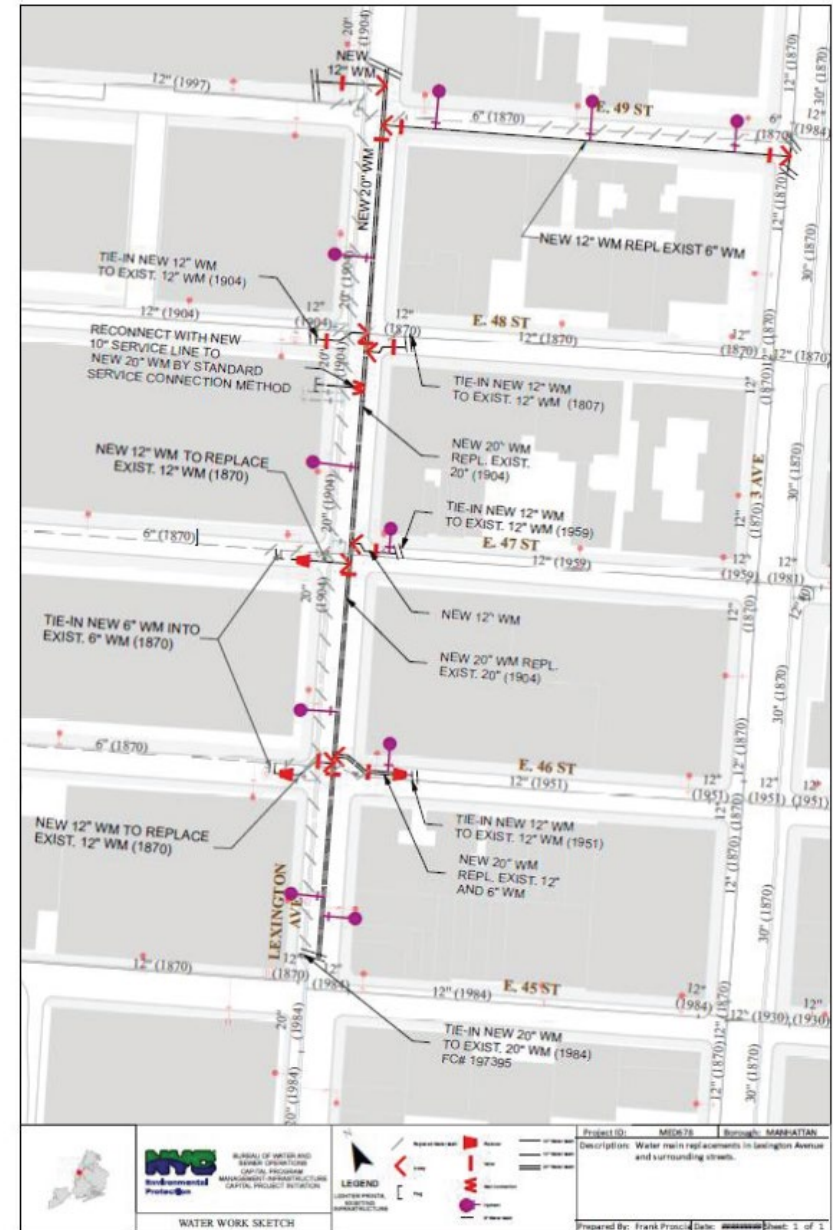
Project Utility Elements

A. Watermain Replacement

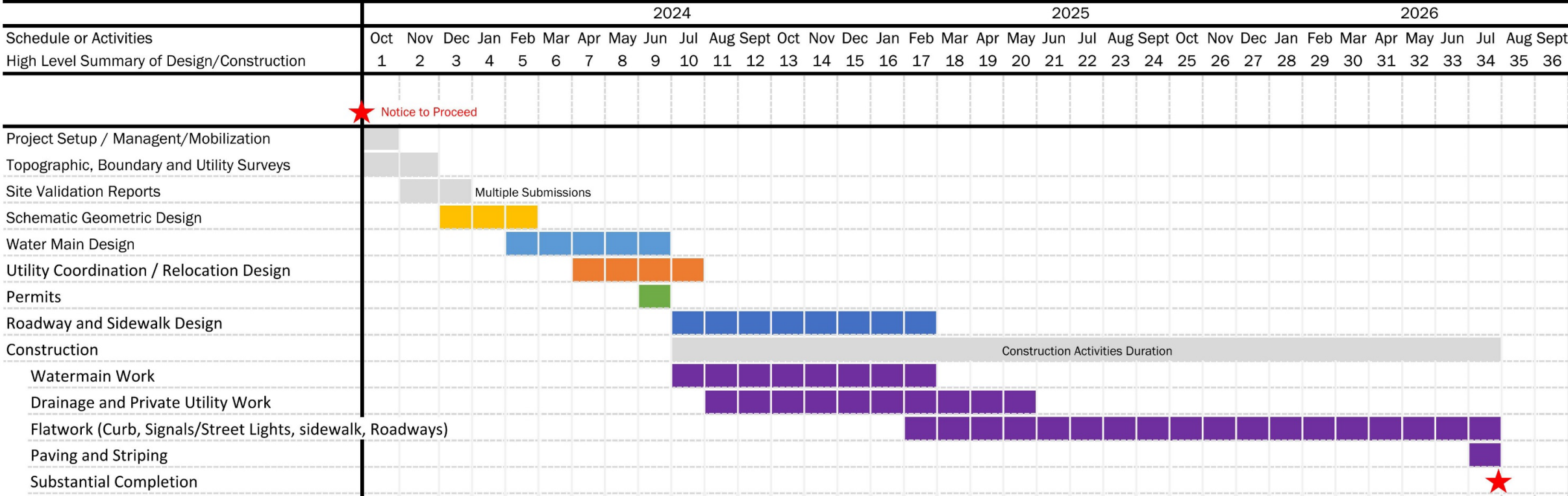
- 20" Watermain (1200 LF)
- 12" Watermain (900 LF)
- 6" Watermain (50 LF)

B. JB 4.0

- Verizon
- Con Edison
- Spectrum



PROJECT MILESTONES



PROJECT MILESTONES

10.02.2023 NTP	2023
12.30.2023 Site Validation	
01.30.2024 Site Validation	2024
06.30.2024 Utility/Watermain Construction	
02.28.2025 Sidewalk/Roadway Construction	2025
07.30.2026 Substantial Completion	2026



ENVISSION

DDC PROJECT TYPOLOGY IX: STREET WORKS ENVISSION GOAL: GOLD AWARD



Quality of Life
14 Credits

Wellbeing, Mobility, Community



Leadership
12 Credits

Collaboration, Planning, Economy



Resource Allocation
14 Credits

Materials, Energy, Water



Natural World
14 Credits

Siting, Conservation, Ecology



Climate & Resilience
10 Credits

Emissions, Resilience

ASSESSED MAXIMUM POINTS AVAILABLE	ASSESSMENT STATUS
200	120
182	83
162	41
78	18
156	63

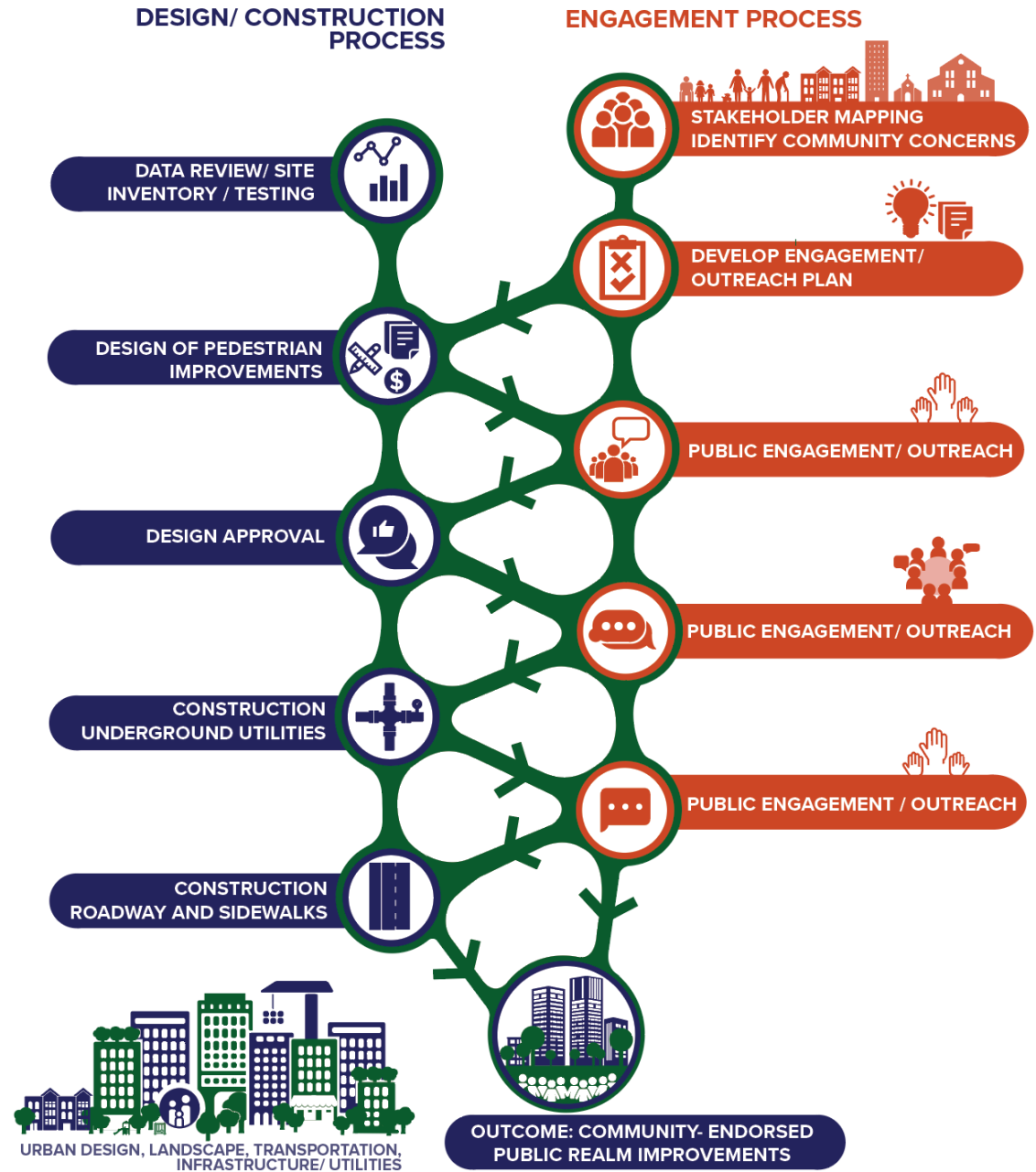
OVERVIEW

1. Introduction
2. Project Scope & Timeline
- 3. Community Outreach**
4. Q&A

COMMUNITY ENGAGEMENT

Successful community engagement is transparent, inclusive, iterative, and proactive.

It provides an equitable process for stakeholders to be equipped with the information and inspiration they need most to engage with and shape the future of their communities.



POTENTIAL COMMUNITY BENEFITS

This project can bring many benefits to local communities including:

- Accessible public spaces
- Long-term pedestrian safety
- Increased foot traffic for local businesses



Accessibility for All



Safety



Beautification



Increased Walkability



Increased Frontage &
Visitation to Businesses



Trees and Greenery

POTENTIAL COMMUNITY CONCERNS

Top pressing issues perceived and identified by CB 5 and CB 6 include

- Economic Development and Recovery
- Affordable Housing
- Quality of Life Issues
- Parks and Open Spaces
- Homelessness



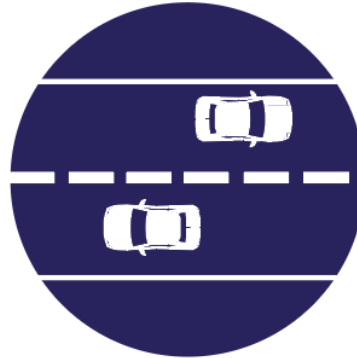
Water Shutdown



Subway & Metro North
Access



Pedestrian Access
Disruption



Vehicular Access Disruption



Noise & Other Pollution



Business Impacts



Schedule Delays

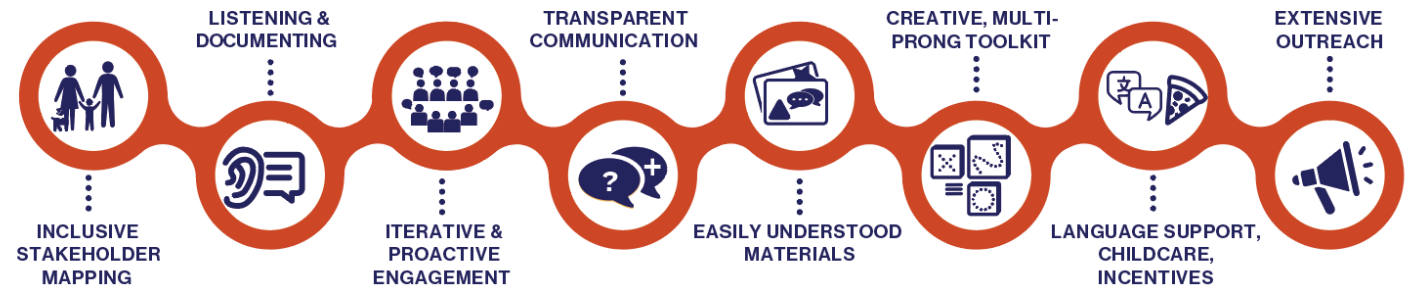


Homelessness

ENGAGEMENT WORKPLAN

Workplan will address input, concerns, and questions from stakeholders including:

- Local Elected Officials
- CB5, CB6
- Grand Central Partnership
- East Midtown Public Realm Improvement Fund Governing Group
- City Agencies and Services
- Private Utilities
- Key Property Owners
- Tenant Associations
- Residents
- Local Businesses
- Community Support Services



Project Milestone Touchpoint Series

- At key moments in the project, we will engage in a series of meetings with local stakeholder groups including CB5, CB6, and additional organizations.

Website & Mass Mailers

- These tools will spread awareness of project and how the work is progressing.
- We will use these tools to guide stakeholders to other opportunities to engage, such as at CB meetings.
- All engagement and outreach materials shall be reviewed and approved by client city agencies and the Triumph-NV5 team before distribution.

OVERVIEW

1. Introduction
2. Project Scope & Timeline
3. Community Outreach
4. Q&A