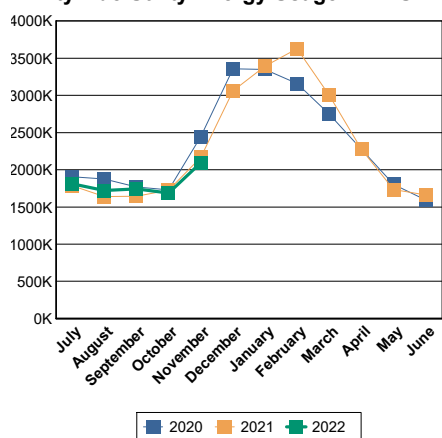
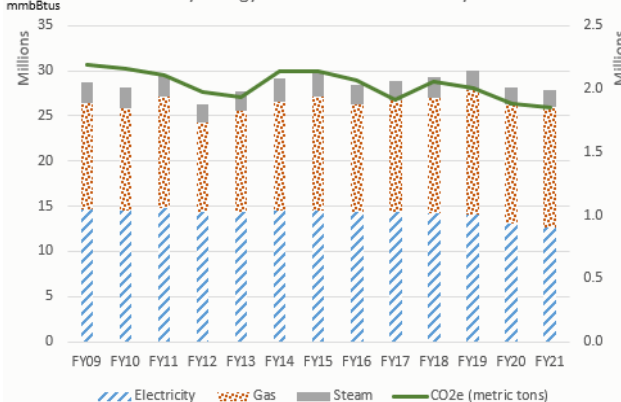


Energy Dashboard Report - December 2021

Citywide Utility Energy Usage in BTU



Utility Energy and Carbon Emissions by FY



- Bar chart covers utility energy for City government buildings and operations (excluding transportation). Utility energy data are from citywide billings handled through DCAS.
- The FY21 utility energy total was 27.8 million mmBtus and 1.85 million metric tons of CO2e.

Energy Usage (From Utility Purchases): Data below are from monthly utility bills for electricity, natural gas, and steam. Usage is for the month and fiscal year-to-date indicated, expressed as mmBtus (millions of British thermal units). Late billings may impact totals for selected agencies.

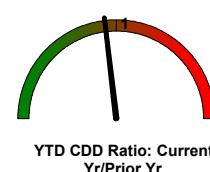
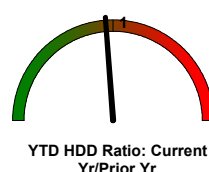
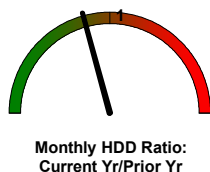
Usage is reported as a group for libraries, cultural institutions, and smaller City agencies (Other). Relative size is % of FY21 total. More detailed reports, including Citywide CORE and Agency CORE reports, are sent to agency energy liaison officers and are available through the DCAS EC3 energy reporting system.

* In millions of Btus (mmBtus) for electricity, natural gas, and steam

	Relative Size	December			Year To Date		
	[% of Total]	FY 21	FY 22	-- % Change --	FY 21	FY 22	--% Change --
CITY GOVERNMENT TOTAL		3,039,023	2,998,511	-1.3%	11,971,486	12,139,593	1.4%
Department of Education	26.2%	891,259	949,258	6.5%	2,798,794	3,110,942	11.2%
Health and Hospitals Corporation	14.0%	379,757	349,080	-8.1%	1,831,457	1,730,769	-5.5%
Department of Environmental Protection	12.5%	324,730	291,638	-10.2%	1,594,995	1,543,120	-3.3%
City University of New York - Senior Colleges	8.8%	238,526	249,956	4.8%	1,067,948	1,118,948	4.8%
Department of Correction	6.3%	171,886	183,649	6.8%	778,149	796,840	2.4%
Department of Citywide Administrative Services	4.0%	149,259	120,257	-19.4%	499,131	454,433	-9.0%
Department of Sanitation	3.7%	141,045	132,694	-5.9%	364,442	347,367	-4.7%
Department of Transportation	3.4%	101,219	101,524	0.3%	487,757	476,542	-2.3%
Police Department	2.9%	92,697	86,884	-6.3%	358,467	338,318	-5.6%
City University of New York - Community Colleges	2.3%	86,728	84,465	-2.6%	265,866	303,959	14.3%
Department of Social Services	2.0%	62,808	61,742	-1.7%	236,103	235,695	-0.2%
Department of Parks and Recreation	1.7%	60,255	58,896	-2.3%	186,202	183,775	-1.3%
Fire Department	1.5%	49,371	41,360	-16.2%	183,406	167,458	-8.7%
Department of Health and Mental Hygiene	0.8%	20,023	21,553	7.6%	114,388	101,514	-11.3%
Administration for Children's Services	0.3%	9,302	10,712	15.2%	47,256	51,755	9.5%
Cultural Institutions	5.3%	152,769	145,787	-4.6%	676,260	671,950	-0.6%
Libraries	1.4%	40,348	44,895	11.3%	166,087	185,296	11.6%
Other	3.0%	67,039	64,161	-4.3%	314,777	320,912	1.9%

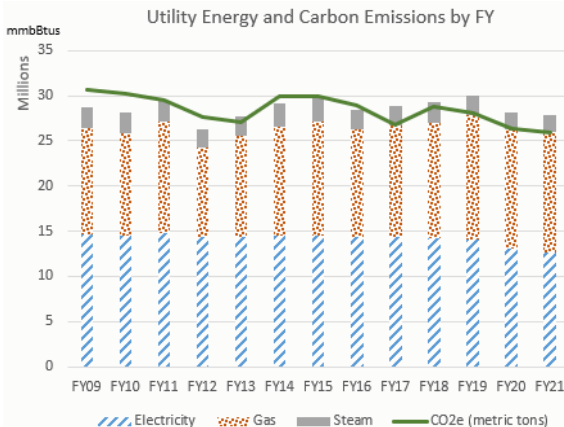
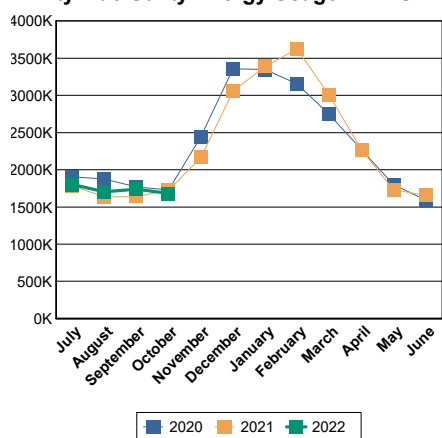
Degree Days are a weather indicator. Heating and cooling degree days are the cumulative monthly difference in daily temperature from a reference temperature of 65 degrees (designated as the temperature at which neither heating nor cooling is needed). A dial value > 1 means greater energy needs as compared to the prior period. (In spring and fall, small year-to-year changes in degree days can appear large on the dial without having a major impact on energy use.) Even when weather causes increases in energy usage, agencies should still aim to drive down usage.

Degree Days	Heating	Cooling
YTD Current FY	1,325	1,019
YTD Prior FY	1,393	1,102
December FY22	658	0
December FY21	793	0



Energy Dashboard Report - November 2021

Citywide Utility Energy Usage in BTU



- Bar chart covers utility energy for City government buildings and operations (excluding transportation). Utility energy data are from citywide billings handled through DCAS.
- The FY21 utility energy total was 27.8 million mmBtus and 1.85 million metric tons of CO2e.

Energy Usage (From Utility Purchases): Data below are from monthly utility bills for electricity, natural gas, and steam. Usage is for the month and fiscal year-to-date indicated, expressed as mmBtus (millions of British thermal units). Late billings may impact totals for selected agencies.

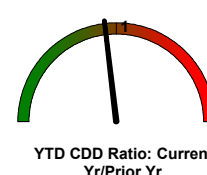
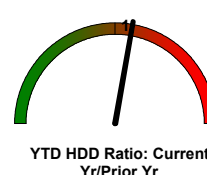
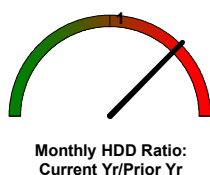
Usage is reported as a group for libraries, cultural institutions, and smaller City agencies (Other). Relative size is % of FY21 total. More detailed reports, including Citywide CORE and Agency CORE reports, are sent to agency energy liaison officers and are available through the DCAS EC3 energy reporting system.

* In millions of Btus (mmBtus) for electricity, natural gas, and steam

	Relative Size	November			Year To Date		
	[% of Total]	FY 21	FY 22	-- % Change --	FY 21	FY 22	--% Change --
CITY GOVERNMENT TOTAL		2,168,652	2,096,600	-3.3%	8,962,534	9,058,491	1.1%
Department of Education	26.2%	588,259	596,636	1.4%	1,907,382	2,150,149	12.7%
Health and Hospitals Corporation	14.0%	289,575	262,904	-9.2%	1,451,613	1,360,175	-6.3%
Department of Environmental Protection	12.5%	281,792	241,266	-14.4%	1,272,588	1,243,238	-2.3%
City University of New York - Senior Colleges	8.8%	200,025	189,331	-5.3%	863,265	865,075	0.2%
Department of Correction	6.3%	124,962	121,307	-2.9%	606,263	611,716	0.9%
Department of Citywide Administrative Services	4.0%	93,870	79,459	-15.4%	350,018	330,523	-5.6%
Department of Sanitation	3.7%	79,464	85,310	7.4%	222,730	211,261	-5.1%
Department of Transportation	3.4%	82,440	83,743	1.6%	386,471	373,623	-3.3%
Police Department	2.9%	58,436	55,513	-5.0%	265,729	251,226	-5.5%
City University of New York - Community Colleges	2.3%	47,812	61,447	28.5%	177,071	216,506	22.3%
Department of Social Services	2.0%	41,231	41,497	0.6%	171,814	166,944	-2.8%
Department of Parks and Recreation	1.7%	37,828	35,513	-6.1%	125,373	124,331	-0.8%
Fire Department	1.5%	29,630	24,865	-16.1%	134,035	125,178	-6.6%
Department of Health and Mental Hygiene	0.8%	17,409	14,965	-14.0%	94,364	80,253	-15.0%
Administration for Children's Services	0.3%	6,965	7,455	7.0%	37,954	40,256	6.1%
Cultural Institutions	5.3%	113,343	115,390	1.8%	522,206	516,447	-1.1%
Libraries	1.4%	27,283	29,359	7.6%	125,879	135,677	7.8%
Other	3.0%	48,327	50,641	4.8%	247,777	255,913	3.3%

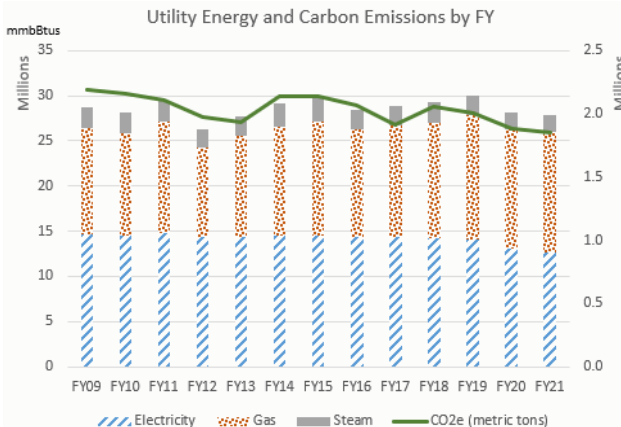
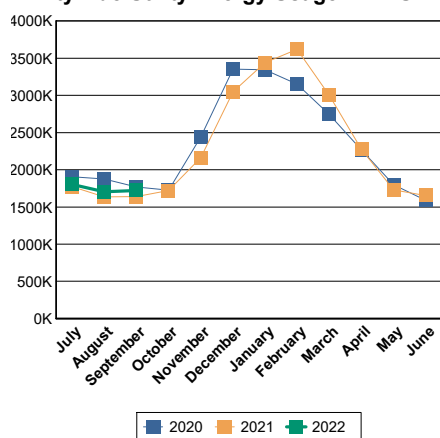
Degree Days are a weather indicator. Heating and cooling degree days are the cumulative monthly difference in daily temperature from a reference temperature of 65 degrees (designated as the temperature at which neither heating nor cooling is needed). A dial value > 1 means greater energy needs as compared to the prior period. (In spring and fall, small year-to-year changes in degree days can appear large on the dial without having a major impact on energy use.) Even when weather causes increases in energy usage, agencies should still aim to drive down usage.

Degree Days	Heating	Cooling
YTD Current FY	667	1,019
YTD Prior FY	600	1,102
November FY22	546	0
November FY21	365	3



Energy Dashboard Report - October 2021

Citywide Utility Energy Usage in BTU



- Bar chart covers utility energy for City government buildings and operations (excluding transportation). Utility energy data are from citywide billings handled through DCAS.
- The FY21 utility energy total was 27.8 million mmBtus and 1.85 million metric tons of CO2e.

Energy Usage (From Utility Purchases): Data below are from monthly utility bills for electricity, natural gas, and steam. Usage is for the month and fiscal year-to-date indicated, expressed as mmBtus (millions of British thermal units). Late billings may impact totals for selected agencies.

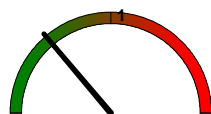
Usage is reported as a group for libraries, cultural institutions, and smaller City agencies (Other). Relative size is % of FY21 total. More detailed reports, including Citywide CORE and Agency CORE reports, are sent to agency energy liaison officers and are available through the DCAS EC3 energy reporting system.

* In millions of Btus (mmBtus) for electricity, natural gas, and steam

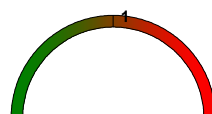
	Relative Size [% of Total]	October			Year To Date		
		FY 21	FY 22	-- % Change --	FY 21	FY 22	--% Change --
CITY GOVERNMENT TOTAL		1,724,713	1,682,337	-2.5%	6,784,963	6,924,929	2.1%
Department of Education	26.2%	373,737	389,143	4.1%	1,309,623	1,526,471	16.6%
Health and Hospitals Corporation	14.0%	278,366	261,709	-6.0%	1,162,056	1,092,786	-6.0%
Department of Environmental Protection	12.5%	262,350	249,997	-4.7%	991,196	998,722	0.8%
City University of New York - Senior Colleges	8.8%	153,553	145,033	-5.5%	663,240	675,768	1.9%
Department of Correction	6.3%	129,463	100,567	-22.3%	481,301	487,865	1.4%
Department of Citywide Administrative Services	4.0%	55,418	52,801	-4.7%	256,148	239,862	-6.4%
Department of Sanitation	3.7%	34,179	29,435	-13.9%	143,284	125,300	-12.6%
Department of Transportation	3.4%	79,604	80,304	0.9%	304,025	289,719	-4.7%
Police Department	2.9%	52,049	40,773	-21.7%	207,398	184,290	-11.1%
City University of New York - Community Colleges	2.3%	30,596	40,878	33.6%	129,255	152,842	18.2%
Department of Social Services	2.0%	32,505	27,911	-14.1%	129,381	122,941	-5.0%
Department of Parks and Recreation	1.7%	22,836	32,757	43.4%	87,538	107,851	23.2%
Fire Department	1.5%	24,707	21,489	-13.0%	104,406	99,644	-4.6%
Department of Health and Mental Hygiene	0.8%	14,846	14,368	-3.2%	76,955	65,108	-15.4%
Administration for Children's Services	0.3%	6,943	7,287	5.0%	30,989	32,803	5.9%
Cultural Institutions	5.3%	101,268	113,921	12.5%	410,184	411,616	0.3%
Libraries	1.4%	24,144	25,573	5.9%	98,580	106,477	8.0%
Other	3.0%	48,148	48,393	0.5%	199,405	204,864	2.7%

Degree Days are a weather indicator. Heating and cooling degree days are the cumulative monthly difference in daily temperature from a reference temperature of 65 degrees (designated as the temperature at which neither heating nor cooling is needed). A dial value > 1 means greater energy needs as compared to the prior period. (In spring and fall, small year-to-year changes in degree days can appear large on the dial without having a major impact on energy use.) Even when weather causes increases in energy usage, agencies should still aim to drive down usage.

Degree Days	Heating	Cooling
YTD Current FY	121	1,019
YTD Prior FY	235	1,099
October FY22	112	37
October FY21	203	8



Monthly HDD Ratio: Current Yr/Prior Yr



Monthly CDD Ratio: Current Yr/Prior Yr



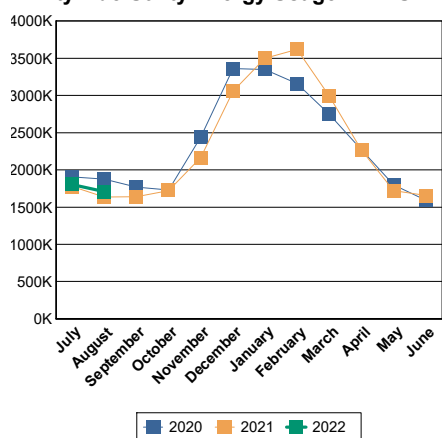
YTD HDD Ratio: Current Yr/Prior Yr



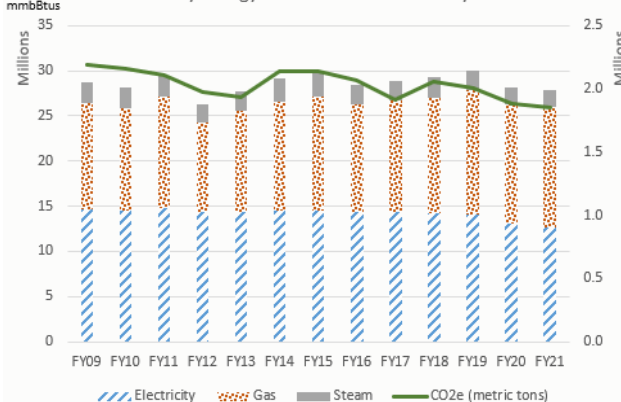
YTD CDD Ratio: Current Yr/Prior Yr

Energy Dashboard Report - September 2021

Citywide Utility Energy Usage in BTU



Utility Energy and Carbon Emissions by FY



- Bar chart covers utility energy for City government buildings and operations (excluding transportation). Utility energy data are from citywide billings handled through DCAS.
- The FY21 utility energy total was 27.8 million mmBtus and 1.85 million metric tons of CO2e.

Energy Usage (From Utility Purchases): Data below are from monthly utility bills for electricity, natural gas, and steam. Usage is for the month and fiscal year-to-date indicated, expressed as mmBtus (millions of British thermal units). Late billings may impact totals for selected agencies.

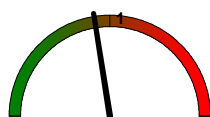
Usage is reported as a group for libraries, cultural institutions, and smaller City agencies (Other). Relative size is % of FY21 total. More detailed reports, including Citywide CORE and Agency CORE reports, are sent to agency energy liaison officers and are available through the DCAS EC3 energy reporting system.

* In millions of Btus (mmBtus) for electricity, natural gas, and steam

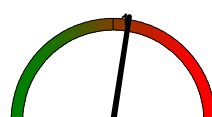
	Relative Size	September			Year To Date		
	[% of Total]	FY 21	FY 22	-- % Change --	FY 21	FY 22	--% Change --
CITY GOVERNMENT TOTAL		1,638,625	1,722,110	5.1%	5,047,469	5,229,134	3.6%
Department of Education	26.2%	322,557	376,421	16.7%	928,229	1,123,894	21.1%
Health and Hospitals Corporation	14.0%	272,631	265,836	-2.5%	883,690	840,506	-4.9%
Department of Environmental Protection	12.5%	237,155	243,816	2.8%	728,907	744,689	2.2%
City University of New York - Senior Colleges	8.8%	165,198	176,419	6.8%	509,703	533,381	4.6%
Department of Correction	6.3%	120,165	137,340	14.3%	351,838	388,141	10.3%
Department of Citywide Administrative Services	4.0%	62,133	56,956	-8.3%	200,729	185,745	-7.5%
Department of Sanitation	3.7%	33,854	30,830	-8.9%	108,999	97,246	-10.8%
Department of Transportation	3.4%	74,633	77,607	4.0%	224,425	208,785	-7.0%
Police Department	2.9%	49,082	48,201	-1.8%	154,338	150,202	-2.7%
City University of New York - Community Colleges	2.3%	32,975	37,761	14.5%	98,350	111,531	13.4%
Department of Social Services	2.0%	29,485	29,707	0.8%	95,516	94,141	-1.4%
Department of Parks and Recreation	1.7%	20,290	19,503	-3.9%	64,691	65,669	1.5%
Fire Department	1.5%	23,336	23,488	0.7%	77,411	78,005	0.8%
Department of Health and Mental Hygiene	0.8%	13,507	19,775	46.4%	62,109	50,592	-18.5%
Administration for Children's Services	0.3%	7,234	7,792	7.7%	24,046	25,612	6.5%
Cultural Institutions	5.3%	102,398	89,302	-12.8%	308,899	292,358	-5.4%
Libraries	1.4%	23,972	26,797	11.8%	74,332	82,209	10.6%
Other	3.0%	48,022	54,559	13.6%	151,258	156,429	3.4%

Degree Days are a weather indicator. Heating and cooling degree days are the cumulative monthly difference in daily temperature from a reference temperature of 65 degrees (designated as the temperature at which neither heating nor cooling is needed). A dial value > 1 means greater energy needs as compared to the prior period. (In spring and fall, small year-to-year changes in degree days can appear large on the dial without having a major impact on energy use.) Even when weather causes increases in energy usage, agencies should still aim to drive down usage.

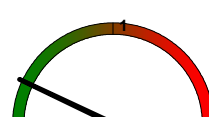
Degree Days	Heating	Cooling
YTD Current FY	9	982
YTD Prior FY	32	1,091
September FY22	7	192
September FY21	32	175



Monthly HDD Ratio: Current Yr/Prior Yr



Monthly CDD Ratio: Current Yr/Prior Yr



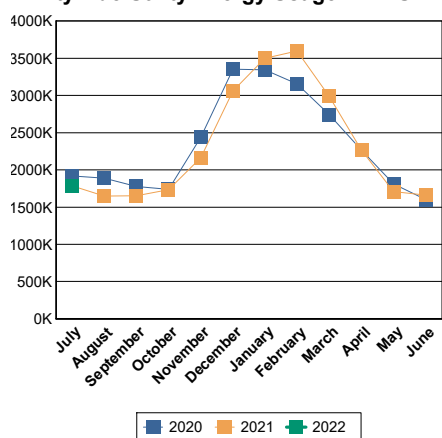
YTD HDD Ratio: Current Yr/Prior Yr



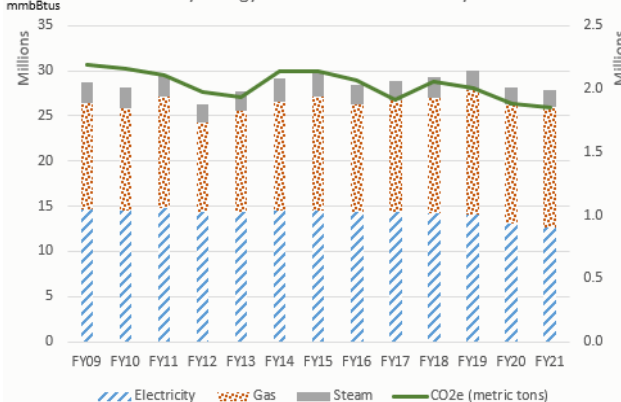
YTD CDD Ratio: Current Yr/Prior Yr

Energy Dashboard Report - August 2021

Citywide Utility Energy Usage in BTU



Utility Energy and Carbon Emissions by FY



- Bar chart covers utility energy for City government buildings and operations (excluding transportation). Utility energy data are from citywide billings handled through DCAS.
- The FY21 utility energy total was 27.8 million mmBtus and 1.85 million metric tons of CO2e.

Energy Usage (From Utility Purchases): Data below are from monthly utility bills for electricity, natural gas, and steam. Usage is for the month and fiscal year-to-date indicated, expressed as mmBtus (millions of British thermal units). Late billings may impact totals for selected agencies.

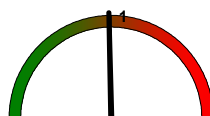
Usage is reported as a group for libraries, cultural institutions, and smaller City agencies (Other). Relative size is % of FY21 total. More detailed reports, including Citywide CORE and Agency CORE reports, are sent to agency energy liaison officers and are available through the DCAS EC3 energy reporting system.

* In millions of Btus (mmBtus) for electricity, natural gas, and steam

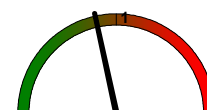
	Relative Size	August			Year To Date		
	[% of Total]	FY 21	FY 22	-- % Change --	FY 21	FY 22	--% Change --
CITY GOVERNMENT TOTAL		1,636,009	1,708,035	4.4%	3,411,549	3,511,366	2.9%
Department of Education	26.2%	292,251	349,141	19.5%	606,525	737,824	21.6%
Health and Hospitals Corporation	14.0%	290,102	282,827	-2.5%	611,059	577,216	-5.5%
Department of Environmental Protection	12.5%	241,442	245,291	1.6%	491,608	500,397	1.8%
City University of New York - Senior Colleges	8.8%	171,763	176,139	2.5%	345,378	357,112	3.4%
Department of Correction	6.3%	96,321	126,365	31.2%	231,673	257,736	11.3%
Department of Citywide Administrative Services	4.0%	68,071	59,855	-12.1%	138,597	127,499	-8.0%
Department of Sanitation	3.7%	35,580	31,972	-10.1%	75,145	66,778	-11.1%
Department of Transportation	3.4%	70,410	67,425	-4.2%	149,776	130,933	-12.6%
Police Department	2.9%	50,416	48,986	-2.8%	106,120	102,757	-3.2%
City University of New York - Community Colleges	2.3%	33,294	36,472	9.5%	65,376	72,612	11.1%
Department of Social Services	2.0%	31,149	30,792	-1.1%	66,316	64,806	-2.3%
Department of Parks and Recreation	1.7%	21,032	21,009	-0.1%	44,217	45,702	3.4%
Fire Department	1.5%	25,580	34,637	35.4%	54,180	62,117	14.7%
Department of Health and Mental Hygiene	0.8%	25,532	16,671	-34.7%	48,602	29,914	-38.5%
Administration for Children's Services	0.3%	8,353	8,423	0.8%	16,812	17,818	6.0%
Cultural Institutions	5.3%	101,573	96,263	-5.2%	206,548	201,268	-2.6%
Libraries	1.4%	24,062	26,460	10.0%	50,392	55,059	9.3%
Other	3.0%	49,077	49,306	0.5%	103,228	103,816	0.6%

Degree Days are a weather indicator. Heating and cooling degree days are the cumulative monthly difference in daily temperature from a reference temperature of 65 degrees (designated as the temperature at which neither heating nor cooling is needed). A dial value > 1 means greater energy needs as compared to the prior period. (In spring and fall, small year-to-year changes in degree days can appear large on the dial without having a major impact on energy use.) Even when weather causes increases in energy usage, agencies should still aim to drive down usage.

Degree Days	Heating	Cooling
YTD Current FY	2	790
YTD Prior FY	0	916
August FY22	0	406
August FY21	0	412



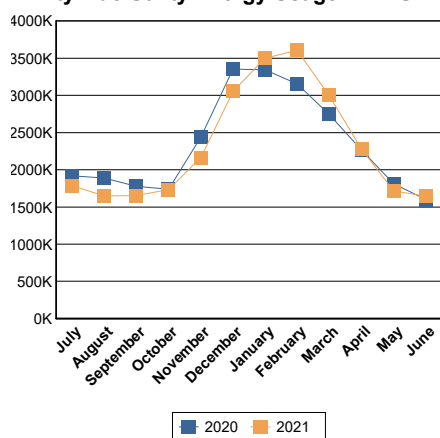
Monthly CDD Ratio: Current Yr/Prior Yr



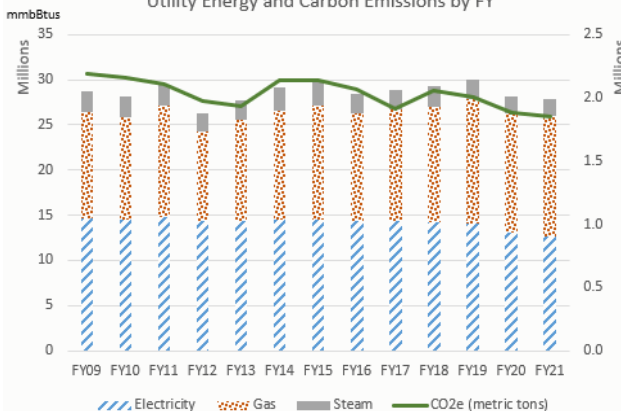
YTD CDD Ratio: Current Yr/Prior Yr

Energy Dashboard Report - July 2021

Citywide Utility Energy Usage in BTU



Utility Energy and Carbon Emissions by FY



- Bar chart covers utility energy for City government buildings and operations (excluding transportation). Utility energy data are from citywide billings handled through DCAS.
- The FY21 utility energy total was 27.8 million mmBtus and 1.85 million metric tons of CO2e.

Energy Usage (From Utility Purchases): Data below are from monthly utility bills for electricity, natural gas, and steam. Usage is for the month and fiscal year-to-date indicated, expressed as mmBtus (millions of British thermal units). Late billings may impact totals for selected agencies.

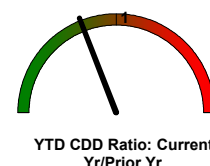
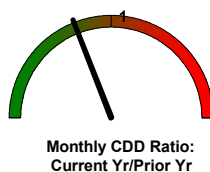
Usage is reported as a group for libraries, cultural institutions, and smaller City agencies (Other). Relative size is % of FY21 total. More detailed reports, including Citywide CORE and Agency CORE reports, are sent to agency energy liaison officers and are available through the DCAS EC3 energy reporting system.

* In millions of Btus (mmBtus) for electricity, natural gas, and steam

	Relative Size [% of Total]	July			Year To Date		
		FY 21	FY 22	-- % Change --	FY 21	FY 22	-- % Change --
CITY GOVERNMENT TOTAL		1,787,265	1,784,686	-0.1%	1,787,265	1,784,686	-0.1%
Department of Education	26.2%	314,064	380,552	21.2%	314,064	380,552	21.2%
Health and Hospitals Corporation	14.0%	320,700	294,495	-8.2%	320,700	294,495	-8.2%
Department of Environmental Protection	12.5%	261,913	255,045	-2.6%	261,913	255,045	-2.6%
City University of New York - Senior Colleges	8.8%	173,368	180,750	4.3%	173,368	180,750	4.3%
Department of Correction	6.3%	135,362	131,391	-2.9%	135,362	131,391	-2.9%
Department of Citywide Administrative Services	4.0%	70,525	64,912	-8.0%	70,525	64,912	-8.0%
Department of Sanitation	3.7%	39,565	34,173	-13.6%	39,565	34,173	-13.6%
Department of Transportation	3.4%	79,357	63,456	-20.0%	79,357	63,456	-20.0%
Police Department	2.9%	55,777	51,255	-8.1%	55,777	51,255	-8.1%
City University of New York - Community Colleges	2.3%	32,251	35,351	9.6%	32,251	35,351	9.6%
Department of Social Services	2.0%	35,167	33,515	-4.7%	35,167	33,515	-4.7%
Department of Parks and Recreation	1.7%	23,191	23,172	-0.1%	23,191	23,172	-0.1%
Fire Department	1.5%	28,540	27,278	-4.4%	28,540	27,278	-4.4%
Department of Health and Mental Hygiene	0.8%	23,069	13,034	-43.5%	23,069	13,034	-43.5%
Administration for Children's Services	0.3%	8,459	9,409	11.2%	8,459	9,409	11.2%
Cultural Institutions	5.3%	104,975	103,748	-1.2%	104,975	103,748	-1.2%
Libraries	1.4%	26,828	28,910	7.8%	26,828	28,910	7.8%
Other	3.0%	54,154	54,236	0.2%	54,154	54,236	0.2%

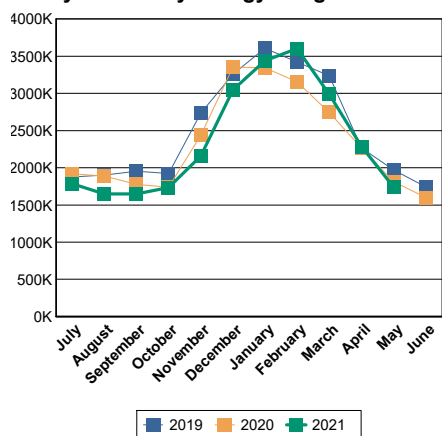
Degree Days are a weather indicator. Heating and cooling degree days are the cumulative monthly difference in daily temperature from a reference temperature of 65 degrees (designated as the temperature at which neither heating nor cooling is needed). A dial value > 1 means greater energy needs as compared to the prior period. (In spring and fall, small year-to-year changes in degree days can appear large on the dial without having a major impact on energy use.) Even when weather causes increases in energy usage, agencies should still aim to drive down usage.

Degree Days	Heating	Cooling
YTD Current FY	2	384
YTD Prior FY	0	504
July FY22	2	384
July FY21	0	504

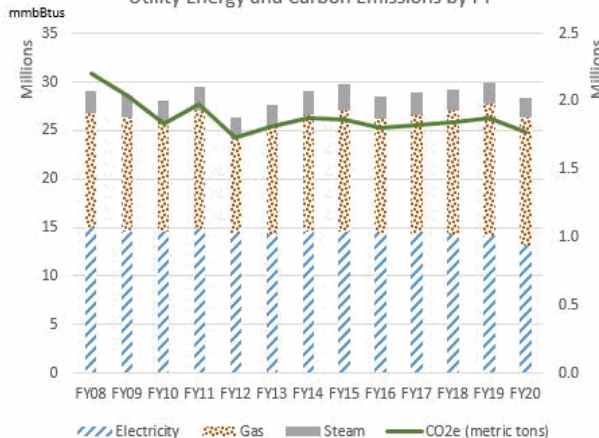


Energy Dashboard Report - June 2021

Citywide Utility Energy Usage in BTU



Utility Energy and Carbon Emissions by FY



• Bar chart covers utility energy for City government buildings and operations (excluding transportation). Utility energy data are from citywide billings handled through DCAS.

• The FY20 utility energy total was 28.2 million mmBtus and 1.77 million metric tons of CO2e.

Energy Usage (From Utility Purchases): Data below are from monthly utility bills for electricity, natural gas, and steam. Usage is for the month and fiscal year-to-date indicated, expressed as mmBtus (millions of British thermal units). Late billings may impact totals for selected agencies.

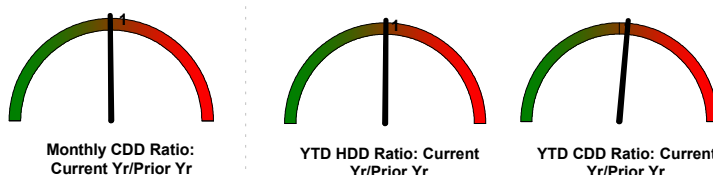
Usage is reported as a group for libraries, cultural institutions, and smaller City agencies (Other). Relative size is % of FY20 total. More detailed reports, including Citywide CORE and Agency CORE reports, are sent to agency energy liaison officers and are available through the DCAS EC3 energy reporting system.

* In millions of Btus (mmBtus) for electricity, natural gas, and steam

	Relative Size [% of Total]	June			Year To Date		
		FY 20	FY 21	-- % Change --	FY 20	FY 21	--% Change --
CITY GOVERNMENT TOTAL		1,600,751	1,643,699	2.7%	28,036,012	27,783,806	-0.9%
Department of Education	24.3%	277,359	353,452	27.4%	6,889,056	7,425,717	7.8%
Health and Hospitals Corporation	13.7%	290,987	265,733	-8.7%	3,867,785	3,882,247	0.4%
Department of Environmental Protection	12.8%	243,186	239,789	-1.4%	3,573,110	3,477,037	-2.7%
City University of New York - Senior Colleges	9.2%	150,651	152,351	1.1%	2,610,797	2,453,491	-6.0%
Department of Correction	6.7%	137,915	141,032	2.3%	1,911,912	1,747,802	-8.6%
Department of Sanitation	3.9%	42,239	29,171	-30.9%	1,112,835	1,026,023	-7.8%
Department of Citywide Administrative Services	3.7%	53,886	50,220	-6.8%	1,067,002	1,111,943	4.2%
Department of Transportation	3.2%	59,596	64,278	7.9%	908,394	937,133	3.2%
Police Department	2.9%	53,373	47,299	-11.4%	821,893	805,031	-2.1%
City University of New York - Community Colleges	2.7%	25,124	27,392	9.0%	754,699	644,785	-14.6%
Department of Social Services	2.0%	31,830	30,697	-3.6%	574,181	542,975	-5.4%
Department of Parks and Recreation	1.8%	22,225	21,711	-2.3%	506,669	485,924	-4.1%
Fire Department	1.5%	24,798	24,142	-2.6%	420,390	415,708	-1.1%
Department of Health and Mental Hygiene	1.0%	23,257	18,994	-18.3%	272,327	226,072	-17.0%
Administration for Children's Services	0.3%	7,846	7,437	-5.2%	114,185	101,416	-11.2%
Cultural Institutions	5.6%	89,242	97,002	8.7%	1,545,997	1,450,264	-6.2%
Libraries	1.4%	20,465	24,412	19.3%	401,666	385,945	-3.9%
Other	3.1%	46,770	48,586	3.9%	683,114	664,292	-2.8%

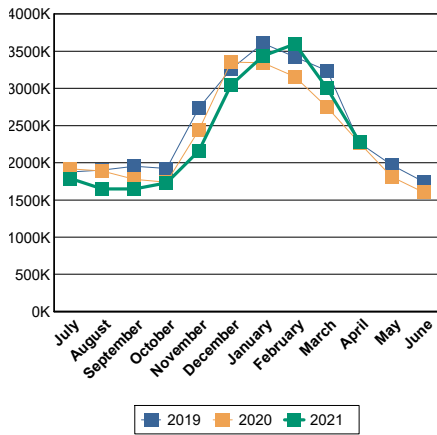
Degree Days are a weather indicator. Heating and cooling degree days are the cumulative monthly difference in daily temperature from a reference temperature of 65 degrees (designated as the temperature at which neither heating nor cooling is needed). A dial value > 1 means greater energy needs as compared to the prior period. (In spring and fall, small year-to-year changes in degree days can appear large on the dial without having a major impact on energy use.) Even when weather causes increases in energy usage, agencies should still aim to drive down usage.

Degree Days	Heating	Cooling
YTD Current FY	4,221	1,495
YTD Prior FY	4,199	1,416
June FY21	0	298
June FY20	4	300

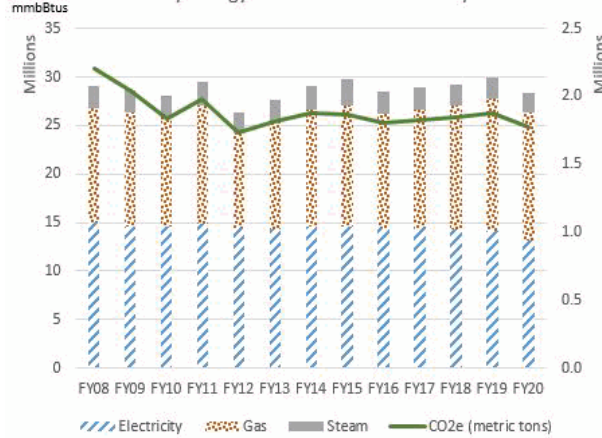


Energy Dashboard Report - May 2021

Citywide Utility Energy Usage in BTU



Utility Energy and Carbon Emissions by FY



- Bar chart covers utility energy for City government buildings and operations (excluding transportation). Utility energy data are from citywide billings handled through DCAS.
- The FY20 utility energy total was 28.2 million mmBtus and 1.77 million metric tons of CO2e.

Energy Usage (From Utility Purchases): Data below are from monthly utility bills for electricity, natural gas, and steam. Usage is for the month and fiscal year-to-date indicated, expressed as mmBtus (millions of British thermal units). Late billings may impact totals for selected agencies.

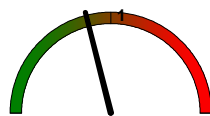
Usage is reported as a group for libraries, cultural institutions, and smaller City agencies (Other). Relative size is % of FY20 total. More detailed reports, including Citywide CORE and Agency CORE reports, are sent to agency energy liaison officers and are available through the DCAS EC3 energy reporting system.

* In millions of Btus (mmBtus) for electricity, natural gas, and steam

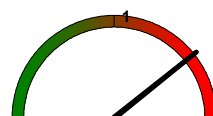
	Relative Size [% of Total]	May			Year To Date		
		FY 20	FY 21	-- % Change --	FY 20	FY 21	--% Change --
CITY GOVERNMENT TOTAL		1,809,856	1,740,526	-3.8%	26,434,009	26,085,617	-1.3%
Department of Education	24.3%	380,027	465,884	22.6%	6,611,165	7,061,195	6.8%
Health and Hospitals Corporation	13.7%	295,037	257,937	-12.6%	3,576,806	3,582,119	0.1%
Department of Environmental Protection	12.8%	265,976	257,137	-3.3%	3,329,859	3,237,925	-2.8%
City University of New York - Senior Colleges	9.2%	140,298	132,967	-5.2%	2,462,360	2,303,760	-6.4%
Department of Correction	6.7%	147,973	112,881	-23.7%	1,773,997	1,606,770	-9.4%
Department of Sanitation	3.9%	83,958	51,789	-38.3%	1,070,636	997,249	-6.9%
Department of Citywide Administrative Services	3.7%	56,488	49,656	-12.1%	1,013,117	1,059,912	4.6%
Department of Transportation	3.2%	54,247	68,558	26.4%	848,835	872,994	2.8%
Police Department	2.9%	60,198	46,377	-23.0%	768,555	754,313	-1.9%
City University of New York - Community Colleges	2.7%	36,216	33,114	-8.6%	729,395	617,205	-15.4%
Department of Social Services	2.0%	38,858	34,390	-11.5%	541,278	511,403	-5.5%
Department of Parks and Recreation	1.8%	30,492	28,032	-8.1%	483,750	463,164	-4.3%
Fire Department	1.5%	29,763	23,249	-21.9%	395,444	390,789	-1.2%
Department of Health and Mental Hygiene	1.0%	17,597	11,020	-37.4%	247,775	204,285	-17.6%
Administration for Children's Services	0.3%	8,072	6,715	-16.8%	106,302	93,684	-11.9%
Cultural Institutions	5.6%	92,343	90,672	-1.8%	1,456,754	1,350,167	-7.3%
Libraries	1.4%	23,351	25,857	10.7%	381,631	360,704	-5.5%
Other	3.1%	48,962	44,294	-9.5%	636,349	617,980	-2.9%

Degree Days are a weather indicator. Heating and cooling degree days are the cumulative monthly difference in daily temperature from a reference temperature of 65 degrees (designated as the temperature at which neither heating nor cooling is needed). A dial value > 1 means greater energy needs as compared to the prior period. (In spring and fall, small year-to-year changes in degree days can appear large on the dial without having a major impact on energy use.) Even when weather causes increases in energy usage, agencies should still aim to drive down usage.

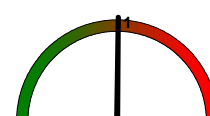
Degree Days	Heating	Cooling
YTD Current FY	4,221	1,197
YTD Prior FY	4,195	1,116
May FY21	139	88
May FY20	165	56



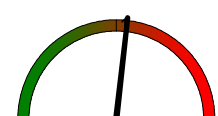
Monthly HDD Ratio:
Current Yr/Prior Yr



Monthly CDD Ratio:
Current Yr/Prior Yr



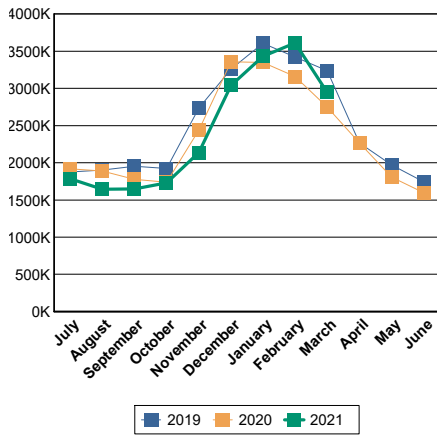
YTD HDD Ratio: Current
Yr/Prior Yr



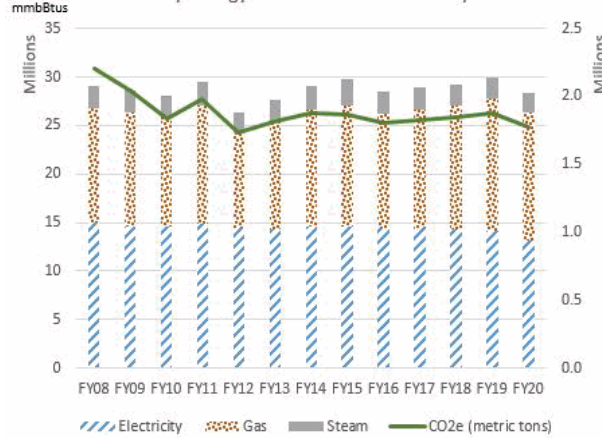
YTD CDD Ratio: Current
Yr/Prior Yr

Energy Dashboard Report - April 2021

Citywide Utility Energy Usage in BTU



Utility Energy and Carbon Emissions by FY



- Bar chart covers utility energy for City government buildings and operations (excluding transportation). Utility energy data are from citywide billings handled through DCAS.
- The FY20 utility energy total was 28.2 million mmBtus and 1.77 million metric tons of CO2e.

Energy Usage (From Utility Purchases): Data below are from monthly utility bills for electricity, natural gas, and steam. Usage is for the month and fiscal year-to-date indicated, expressed as mmBtus (millions of British thermal units). Late billings may impact totals for selected agencies.

Usage is reported as a group for libraries, cultural institutions, and smaller City agencies (Other). Relative size is % of FY20 total. More detailed reports, including Citywide CORE and Agency CORE reports, are sent to agency energy liaison officers and are available through the DCAS EC3 energy reporting system.

* In millions of Btus (mmBtus) for electricity, natural gas, and steam

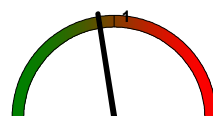
	Relative Size	April			Year To Date		
	[% of Total]	FY 20	FY 21	-- % Change --	FY 20	FY 21	--% Change --
CITY GOVERNMENT TOTAL		2,266,076	2,284,595	0.8%	24,628,066	24,336,715	-1.2%
Department of Education	24.3%	548,078	652,904	19.1%	6,231,263	6,576,928	5.5%
Health and Hospitals Corporation	13.7%	312,985	293,925	-6.1%	3,281,818	3,324,199	1.3%
Department of Environmental Protection	12.8%	311,640	278,722	-10.6%	3,063,305	2,934,515	-4.2%
City University of New York - Senior Colleges	9.2%	177,491	186,683	5.2%	2,322,163	2,168,281	-6.6%
Department of Correction	6.7%	158,250	136,241	-13.9%	1,626,024	1,494,621	-8.1%
Department of Sanitation	3.9%	120,636	103,329	-14.3%	986,678	946,895	-4.0%
Department of Citywide Administrative Services	3.7%	82,199	76,693	-6.7%	956,571	1,015,002	6.1%
Department of Transportation	3.2%	63,227	64,276	1.7%	794,532	803,563	1.1%
Police Department	2.9%	76,732	62,014	-19.2%	708,483	707,905	-0.1%
City University of New York - Community Colleges	2.7%	54,412	88,479	62.6%	693,293	634,059	-8.5%
Department of Social Services	2.0%	50,017	45,523	-9.0%	503,517	477,180	-5.2%
Department of Parks and Recreation	1.8%	45,372	41,480	-8.6%	454,767	435,370	-4.3%
Fire Department	1.5%	35,351	30,596	-13.5%	365,885	368,480	0.7%
Department of Health and Mental Hygiene	1.0%	18,277	15,333	-16.1%	231,543	194,397	-16.0%
Administration for Children's Services	0.3%	8,957	7,519	-16.1%	98,234	87,063	-11.4%
Cultural Institutions	5.6%	115,116	120,563	4.7%	1,364,411	1,259,817	-7.7%
Libraries	1.4%	31,187	29,691	-4.8%	358,190	335,346	-6.4%
Other	3.1%	56,150	50,625	-9.8%	587,388	573,093	-2.4%

Degree Days are a weather indicator. Heating and cooling degree days are the cumulative monthly difference in daily temperature from a reference temperature of 65 degrees (designated as the temperature at which neither heating nor cooling is needed). A dial value > 1 means greater energy needs as compared to the prior period. (In spring and fall, small year-to-year changes in degree days can appear large on the dial without having a major impact on energy use.) Even when weather causes increases in energy usage, agencies should still aim to drive down usage.

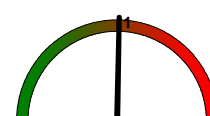
Degree Days	Heating	Cooling
YTD Current FY	4,082	1,109
YTD Prior FY	4,030	1,060
April FY21	321	5
April FY20	430	0



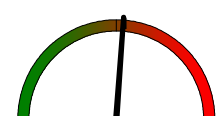
Monthly HDD Ratio: Current Yr/Prior Yr



Monthly CDD Ratio: Current Yr/Prior Yr



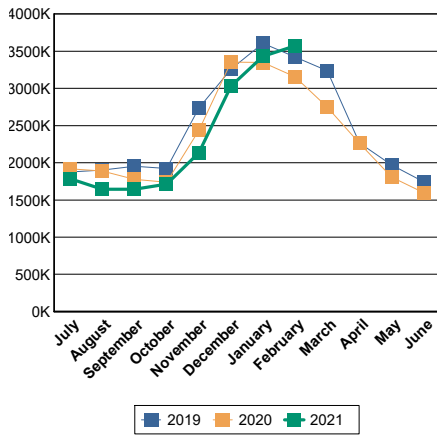
YTD HDD Ratio: Current Yr/Prior Yr



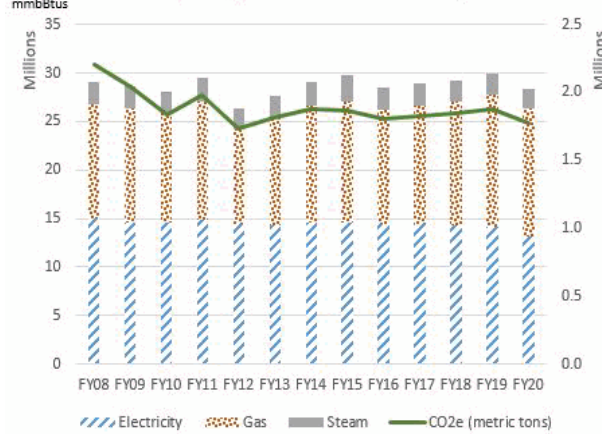
YTD CDD Ratio: Current Yr/Prior Yr

Energy Dashboard Report - March 2021

Citywide Utility Energy Usage in BTU



Utility Energy and Carbon Emissions by FY



- Bar chart covers utility energy for City government buildings and operations (excluding transportation). Utility energy data are from citywide billings handled through DCAS.
- The FY20 utility energy total was 28.2 million mmBtus and 1.77 million metric tons of CO2e.

Energy Usage (From Utility Purchases): Data below are from monthly utility bills for electricity, natural gas, and steam. Usage is for the month and fiscal year-to-date indicated, expressed as mmBtus (millions of British thermal units). Late billings may impact totals for selected agencies.

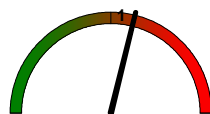
Usage is reported as a group for libraries, cultural institutions, and smaller City agencies (Other). Relative size is % of FY20 total. More detailed reports, including Citywide CORE and Agency CORE reports, are sent to agency energy liaison officers and are available through the DCAS EC3 energy reporting system.

* In millions of Btus (mmBtus) for electricity, natural gas, and steam

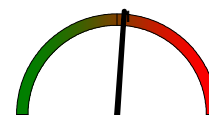
	Relative Size [% of Total]	March			Year To Date		
		FY 20	FY 21	-- % Change --	FY 20	FY 21	--% Change --
CITY GOVERNMENT TOTAL		2,747,095	2,945,369	7.2%	22,370,355	21,971,055	-1.8%
Department of Education	24.3%	727,327	927,992	27.6%	5,685,914	5,902,438	3.8%
Health and Hospitals Corporation	13.7%	356,400	349,565	-1.9%	2,968,834	3,007,044	1.3%
Department of Environmental Protection	12.8%	327,597	322,275	-1.6%	2,758,956	2,667,684	-3.3%
City University of New York - Senior Colleges	9.2%	243,725	242,778	-0.4%	2,144,673	1,981,236	-7.6%
Department of Correction	6.7%	207,182	164,344	-20.7%	1,467,775	1,315,321	-10.4%
Department of Sanitation	3.9%	133,697	147,673	10.5%	865,141	842,743	-2.6%
Department of Citywide Administrative Services	3.7%	105,947	120,885	14.1%	874,459	954,280	9.1%
Department of Transportation	3.2%	72,273	74,569	3.2%	731,281	737,026	0.8%
Police Department	2.9%	81,949	83,674	2.1%	629,722	644,547	2.4%
City University of New York - Community Colleges	2.7%	72,878	92,973	27.6%	639,440	546,464	-14.5%
Department of Social Services	2.0%	57,473	58,496	1.8%	453,497	430,815	-5.0%
Department of Parks and Recreation	1.8%	55,401	59,776	7.9%	410,492	395,398	-3.7%
Fire Department	1.5%	41,388	45,229	9.3%	330,609	337,108	2.0%
Department of Health and Mental Hygiene	1.0%	19,971	19,249	-3.6%	213,266	178,119	-16.5%
Administration for Children's Services	0.3%	10,032	9,501	-5.3%	89,277	79,443	-11.0%
Cultural Institutions	5.6%	137,758	125,269	-9.1%	1,246,775	1,120,344	-10.1%
Libraries	1.4%	37,008	38,397	3.8%	327,161	306,604	-6.3%
Other	3.1%	59,090	62,722	6.1%	533,083	524,443	-1.6%

Degree Days are a weather indicator. Heating and cooling degree days are the cumulative monthly difference in daily temperature from a reference temperature of 65 degrees (designated as the temperature at which neither heating nor cooling is needed). A dial value > 1 means greater energy needs as compared to the prior period. (In spring and fall, small year-to-year changes in degree days can appear large on the dial without having a major impact on energy use.) Even when weather causes increases in energy usage, agencies should still aim to drive down usage.

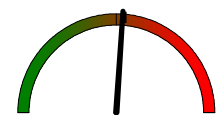
Degree Days	Heating	Cooling
YTD Current FY	3,761	1,104
YTD Prior FY	3,600	1,060
March FY21	594	2
March FY20	515	0



Monthly HDD Ratio:
Current Yr/Prior Yr



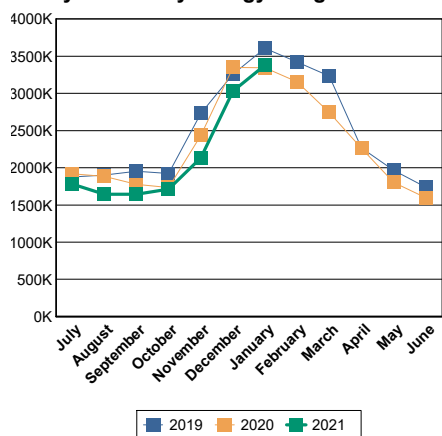
YTD HDD Ratio: Current
Yr/Prior Yr



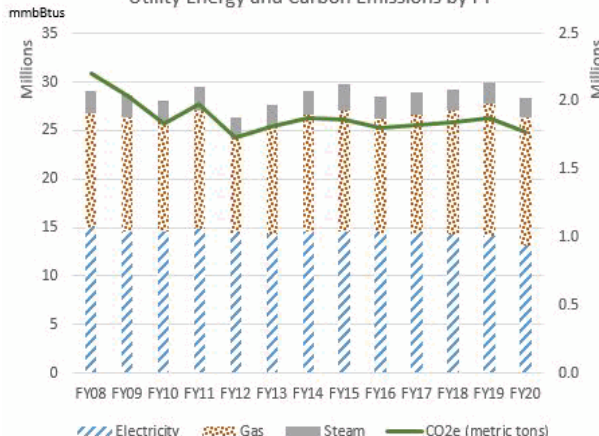
YTD CDD Ratio: Current
Yr/Prior Yr

Energy Dashboard Report - February 2021

Citywide Utility Energy Usage in BTU



Utility Energy and Carbon Emissions by FY



- Bar chart covers utility energy for City government buildings and operations (excluding transportation). Utility energy data are from citywide billings handled through DCAS.

- The FY20 utility energy total was 28.2 million mmBtus and 1.77 million metric tons of CO2e.

Energy Usage (From Utility Purchases): Data below are from monthly utility bills for electricity, natural gas, and steam. Usage is for the month and fiscal year-to-date indicated, expressed as mmBtus (millions of British thermal units). Late billings may impact totals for selected agencies.

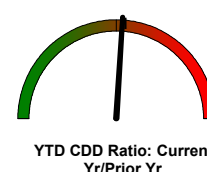
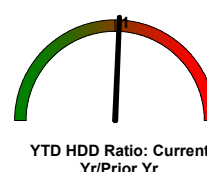
Usage is reported as a group for libraries, cultural institutions, and smaller City agencies (Other). Relative size is % of FY20 total. More detailed reports, including Citywide CORE and Agency CORE reports, are sent to agency energy liaison officers and are available through the DCAS EC3 energy reporting system.

* In millions of Btus (mmBtus) for electricity, natural gas, and steam

	Relative Size [% of Total]	February			Year To Date		
		FY 20	FY 21	-- % Change --	FY 20	FY 21	--% Change --
CITY GOVERNMENT TOTAL		3,156,802	3,572,713	13.2%	19,610,509	18,958,356	-3.3%
Department of Education	24.3%	900,458	1,160,979	28.9%	4,947,918	4,945,882	0.0%
Health and Hospitals Corporation	13.7%	361,896	396,380	9.5%	2,612,434	2,641,099	1.1%
Department of Environmental Protection	12.8%	359,825	365,404	1.6%	2,431,369	2,358,526	-3.0%
City University of New York - Senior Colleges	9.2%	298,295	314,056	5.3%	1,900,948	1,746,423	-8.1%
Department of Correction	6.7%	206,089	195,686	-5.0%	1,260,592	1,120,297	-11.1%
Department of Sanitation	3.9%	160,095	169,981	6.2%	731,444	695,580	-4.9%
Department of Citywide Administrative Services	3.7%	124,861	165,366	32.4%	768,511	822,818	7.1%
Department of Transportation	3.2%	77,514	79,618	2.7%	658,993	659,718	0.1%
Police Department	2.9%	91,881	111,785	21.7%	549,436	570,853	3.9%
City University of New York - Community Colleges	2.7%	95,989	97,117	1.2%	566,562	453,422	-20.0%
Department of Social Services	2.0%	67,593	73,146	8.2%	396,030	375,889	-5.1%
Department of Parks and Recreation	1.8%	66,419	77,472	16.6%	355,074	335,955	-5.4%
Fire Department	1.5%	51,120	58,953	15.3%	289,086	291,904	1.0%
Department of Health and Mental Hygiene	1.0%	22,376	21,613	-3.4%	192,542	157,327	-18.3%
Administration for Children's Services	0.3%	10,962	11,687	6.6%	79,245	69,910	-11.8%
Cultural Institutions	5.6%	152,091	152,153	0.0%	1,109,018	985,501	-11.1%
Libraries	1.4%	44,112	49,431	12.1%	287,055	265,379	-7.6%
Other	3.1%	65,226	71,885	10.2%	474,251	461,872	-2.6%

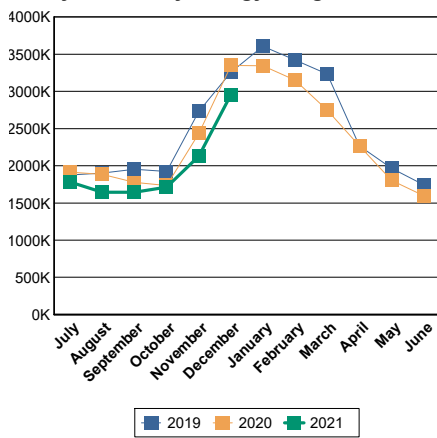
Degree Days are a weather indicator. Heating and cooling degree days are the cumulative monthly difference in daily temperature from a reference temperature of 65 degrees (designated as the temperature at which neither heating nor cooling is needed). A dial value > 1 means greater energy needs as compared to the prior period. (In spring and fall, small year-to-year changes in degree days can appear large on the dial without having a major impact on energy use.) Even when weather causes increases in energy usage, agencies should still aim to drive down usage.

Degree Days	Heating	Cooling
YTD Current FY	3,167	1,102
YTD Prior FY	3,085	1,060
February FY21	854	0
February FY20	706	0

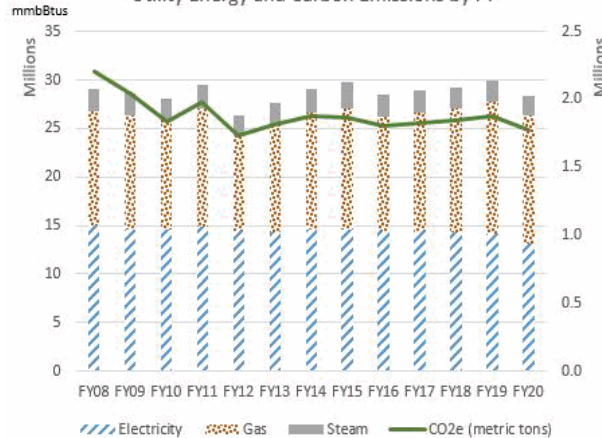


Energy Dashboard Report - January 2021

Citywide Utility Energy Usage in BTU



Utility Energy and Carbon Emissions by FY



- Bar chart covers utility energy for City government buildings and operations (excluding transportation). Utility energy data are from citywide billings handled through DCAS.
- The FY20 utility energy total was 28.2 million mmBtus and 1.77 million metric tons of CO2e.

Energy Usage (From Utility Purchases): Data below are from monthly utility bills for electricity, natural gas, and steam. Usage is for the month and fiscal year-to-date indicated, expressed as mmBtus (millions of British thermal units). Late billings may impact totals for selected agencies.

Usage is reported as a group for libraries, cultural institutions, and smaller City agencies (Other). Relative size is % of FY20 total. More detailed reports, including Citywide CORE and Agency CORE reports, are sent to agency energy liaison officers and are available through the DCAS EC3 energy reporting system.

* In millions of Btus (mmBtus) for electricity, natural gas, and steam

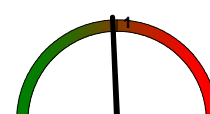
	Relative Size	January			Year To Date		
	[% of Total]	FY 20	FY 21	-- % Change --	FY 20	FY 21	--% Change --
CITY GOVERNMENT TOTAL		3,345,313	3,377,297	1.0%	16,443,809	15,327,410	-6.8%
Department of Education	24.3%	951,376	1,030,040	8.3%	4,043,458	3,770,933	-6.7%
Health and Hospitals Corporation	13.7%	388,778	397,067	2.1%	2,250,538	2,227,777	-1.0%
Department of Environmental Protection	12.8%	374,027	347,078	-7.2%	2,071,528	1,995,239	-3.7%
City University of New York - Senior Colleges	9.2%	298,003	303,274	1.8%	1,594,818	1,431,443	-10.2%
Department of Correction	6.7%	209,506	203,889	-2.7%	1,054,503	922,847	-12.5%
Department of Sanitation	3.9%	168,482	163,066	-3.2%	571,716	524,810	-8.2%
Department of Citywide Administrative Services	3.7%	138,346	151,574	9.6%	644,675	642,862	-0.3%
Department of Transportation	3.2%	91,293	88,937	-2.6%	581,460	576,325	-0.9%
Police Department	2.9%	96,207	101,214	5.2%	457,214	456,578	-0.1%
City University of New York - Community Colleges	2.7%	100,015	92,750	-7.3%	470,651	356,389	-24.3%
Department of Social Services	2.0%	71,241	69,805	-2.0%	328,457	303,971	-7.5%
Department of Parks and Recreation	1.8%	75,031	71,787	-4.3%	288,202	258,315	-10.4%
Fire Department	1.5%	55,155	55,364	0.4%	237,868	231,982	-2.5%
Department of Health and Mental Hygiene	1.0%	25,730	22,482	-12.6%	171,305	137,346	-19.8%
Administration for Children's Services	0.3%	11,515	10,180	-11.6%	68,281	57,857	-15.3%
Cultural Institutions	5.6%	176,197	149,314	-15.3%	956,927	825,272	-13.8%
Libraries	1.4%	48,061	47,278	-1.6%	243,198	218,395	-10.2%
Other	3.1%	66,347	72,197	8.8%	409,011	389,070	-4.9%

Degree Days are a weather indicator. Heating and cooling degree days are the cumulative monthly difference in daily temperature from a reference temperature of 65 degrees (designated as the temperature at which neither heating nor cooling is needed). A dial value > 1 means greater energy needs as compared to the prior period. (In spring and fall, small year-to-year changes in degree days can appear large on the dial without having a major impact on energy use.) Even when weather causes increases in energy usage, agencies should still aim to drive down usage.

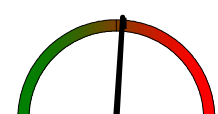
Degree Days	Heating	Cooling
YTD Current FY	2,313	1,102
YTD Prior FY	2,379	1,060
January FY21	920	0
January FY20	780	0



Monthly HDD Ratio:
Current Yr/Prior Yr



YTD HDD Ratio: Current
Yr/Prior Yr



YTD CDD Ratio: Current
Yr/Prior Yr