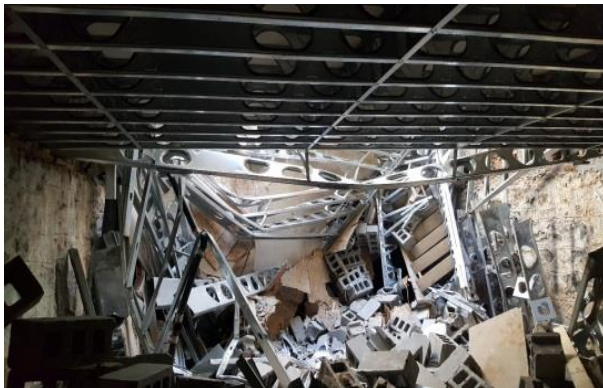


SERVICE NOTICE

Overloading and Improper Installation of Cold-Formed Steel (Light-Frame Construction) Can Result in Injury and Property Damage



Overloading and improper installation of cold-formed steel including joists, rafters, trusses, and structural wall studs, etc., can result in injury and property damage.

Materials and equipment may only be placed on finished decking where directed by your supervisor. No placed load should exceed the capacity of the framing/decking.

Cranes (or similar) should not be allowed to deposit material or equipment on a deck without permission from the construction superintendent.

Do not remove bracing or shoring unless directed by your supervisor. (see *Figure A*)

Do not go onto any section of deck that is being formed unless you are experienced with laying deck and have discussed the operation with the construction superintendent before beginning the work.

Your employer is required to provide fall protection. Do not go near any uncovered holes or unprotected edges unless you are wearing a harness and tied off to a lifeline.

Do not cut or drill through cold-formed steel, run all utilities through provided openings. (see *Figure B*)



Figure A



Figure B

For more information, please see [Buildings Bulletin 2019-011](#).

POST UNTIL: December 31, 2019