



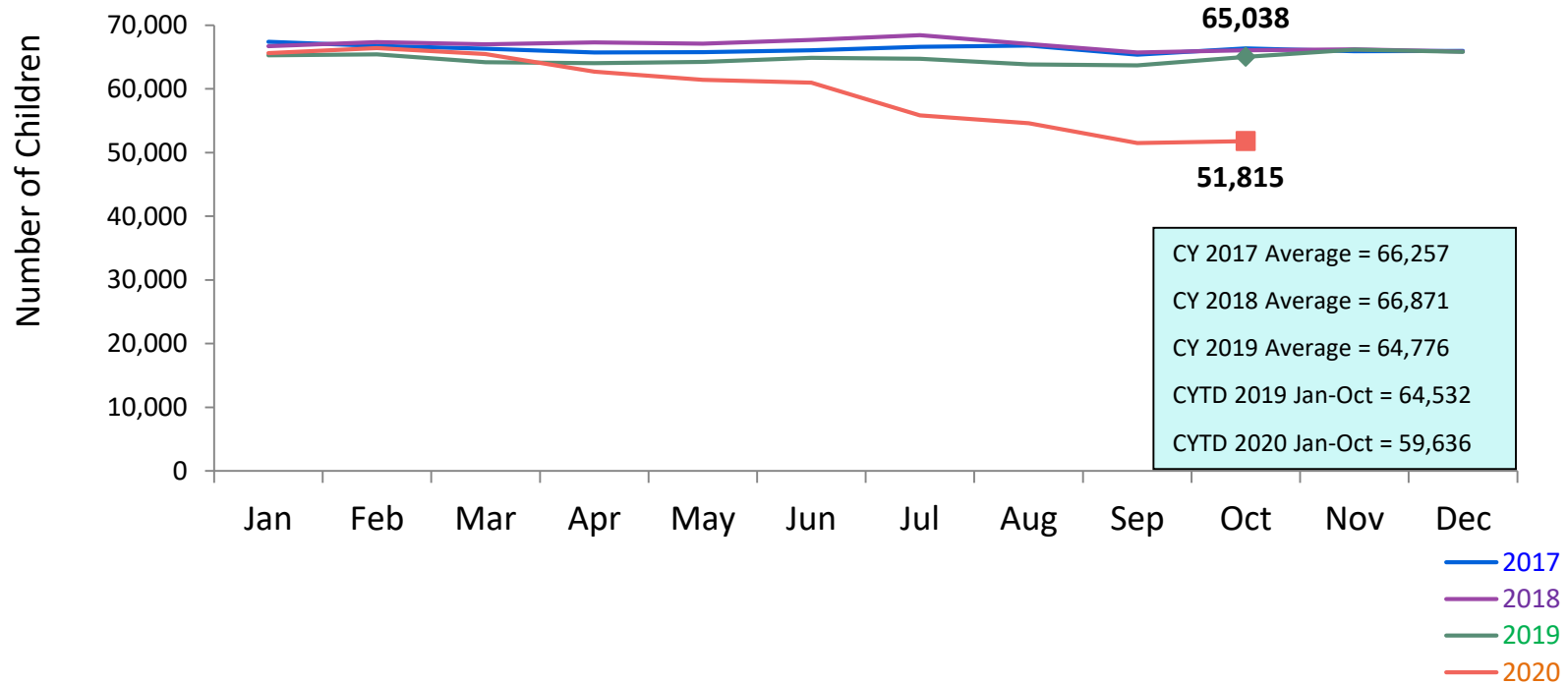
FLASH

monthly indicator

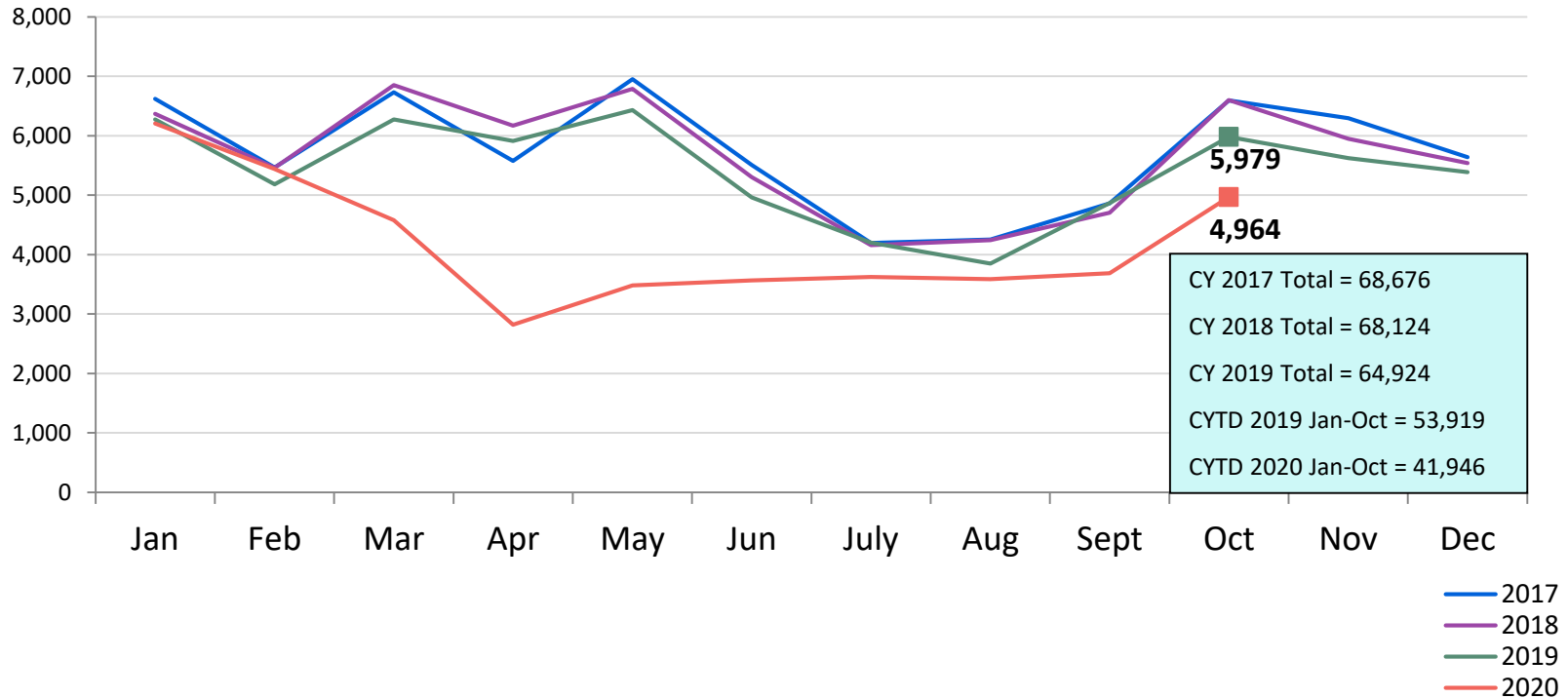
REPORT

November 2020

Children Using Vouchers for Child Care
January 2017 – October 2020 (End of Month)



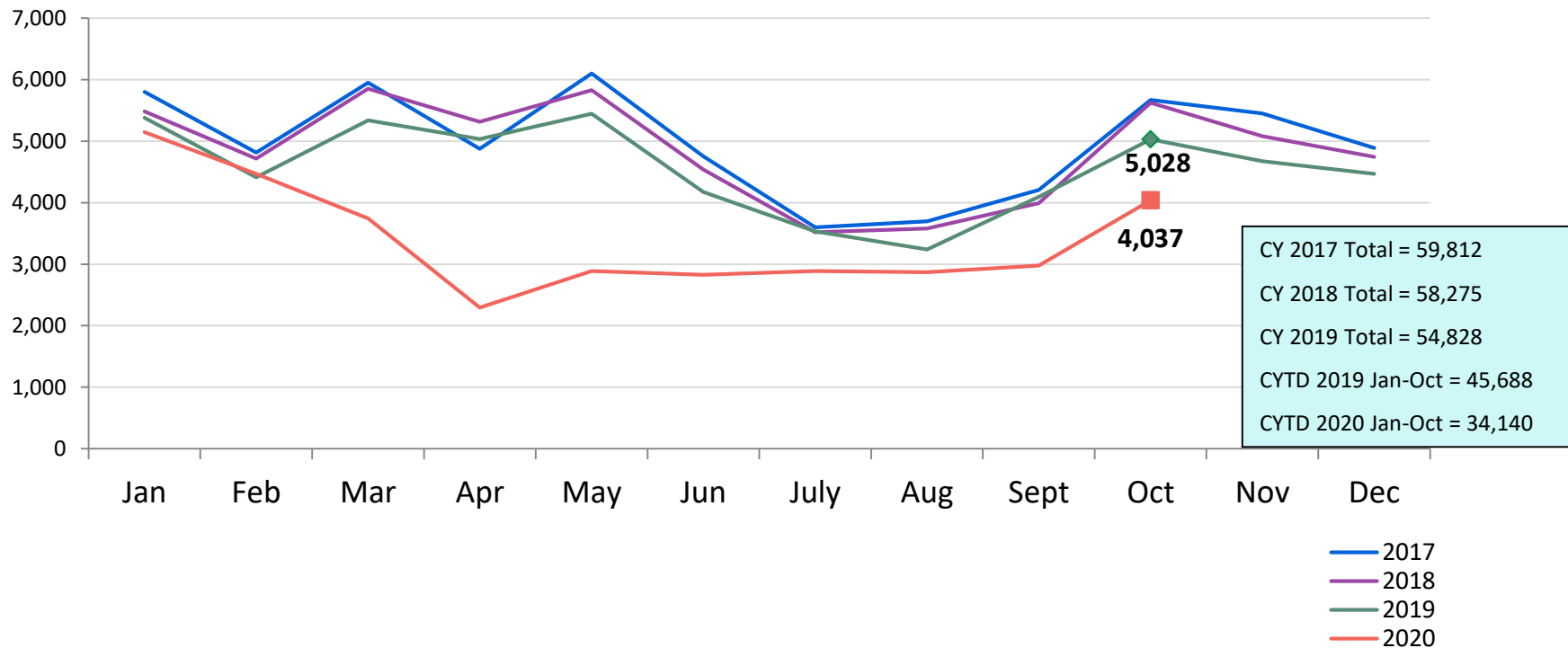
SCR Intakes
January 2017 - October 2020



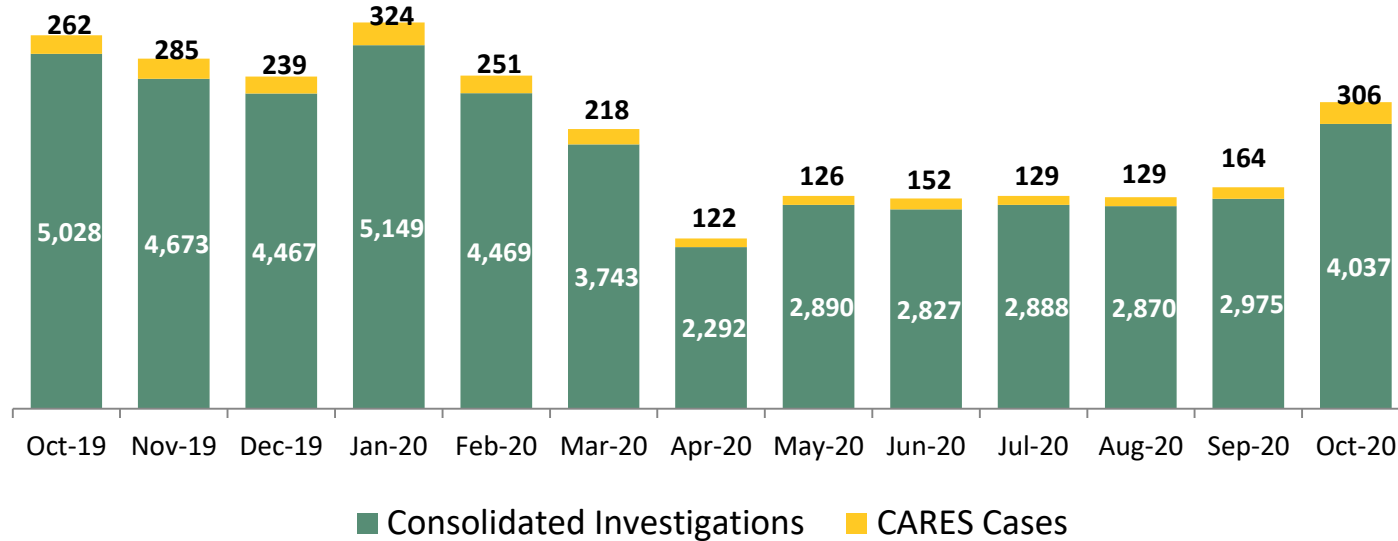
Note: SCR intakes can be followed by investigation or Family Assessment Response.

See Pages 27 through 30 of the Appendix for supporting data.

SCR Consolidated Investigations
January 2017 – October 2020



Consolidated Investigations and CARES* Cases
October 2019 – October 2020



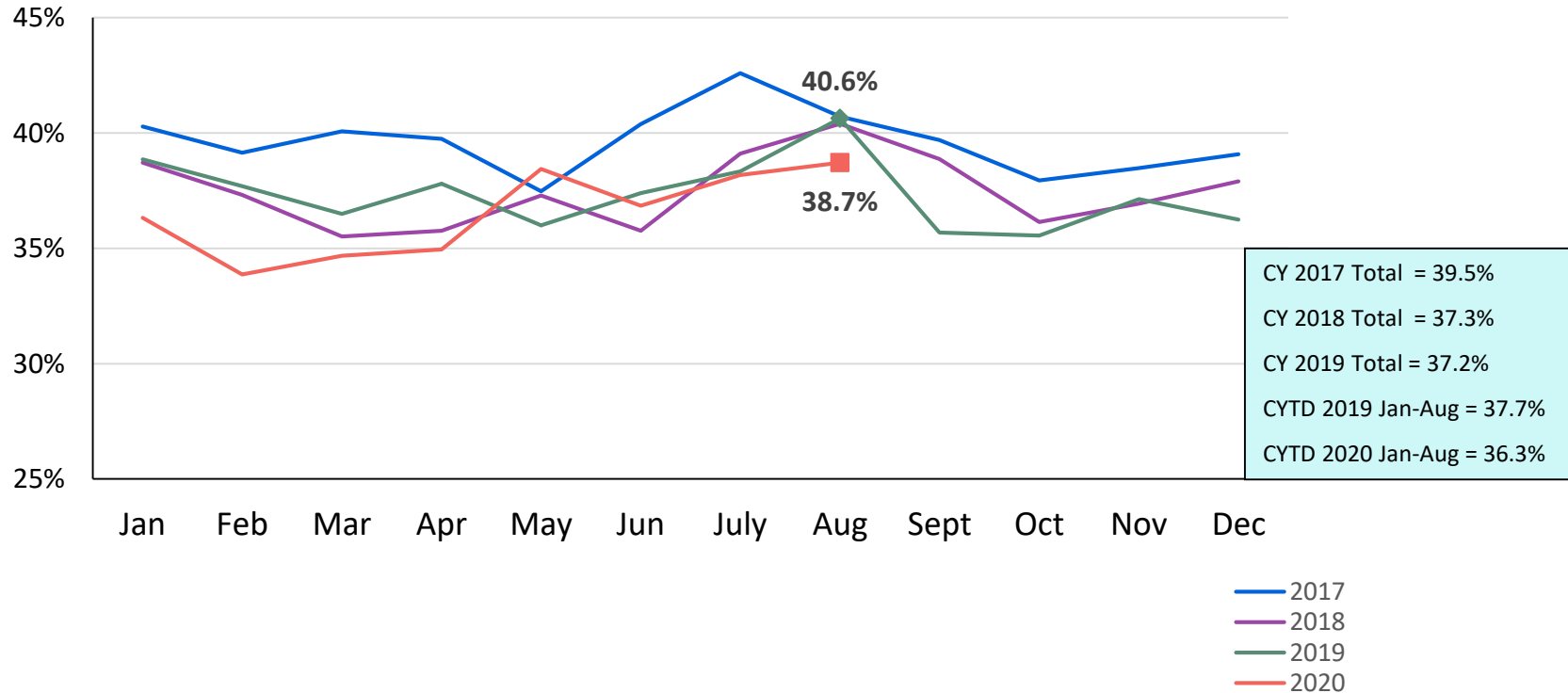
Calendar-Year-to-Date

Jan-Oct 2019	Jan-Oct 2020
1,671	1,921
45,688	34,140

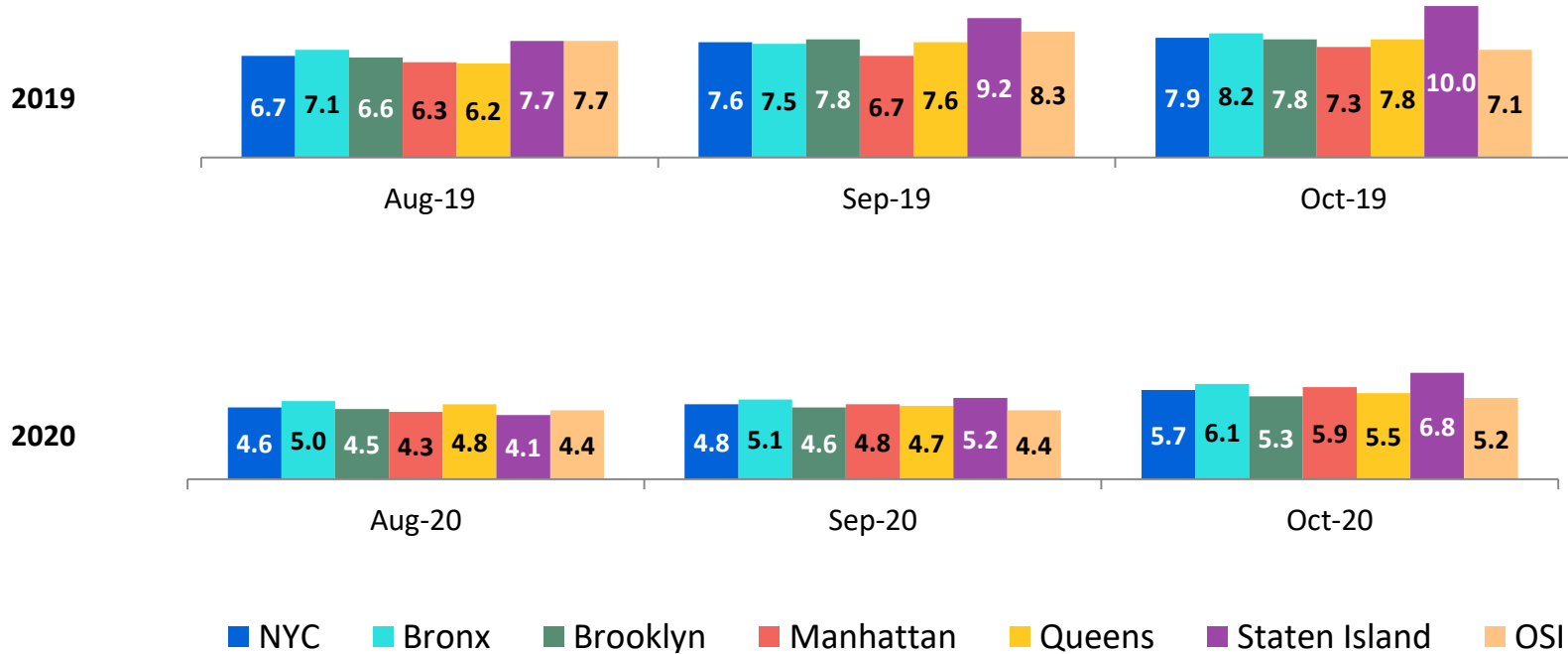
	Oct 2019	Nov 2019	Dec 2019	Jan 2020	Feb 2020	Mar 2020	Apr 2020	May 2020	Jun 2020	Jul 2020	Aug 2020	Sep 2020	Oct 2020	Jan-Oct 2019	Jan-Oct 2020
Number of Investigations & CARES cases	5,290	4,958	4,706	5,473	4,720	3,961	2,414	3,016	2,979	3,017	2,999	3,139	4,343	47,359	36,061

*CARES (Collaborative Assessment, Response, Engagement and Support, formerly known as FAR) is an alternative Child Protective response to some reports of child maltreatment. CARES does not require an investigation and determination of allegations and individual culpability for families reported to the SCR. It is an alternative approach to providing protection to children by engaging families in an assessment of child safety and of family needs, in finding solutions to family problems and in identifying informal and formal supports to meet their needs and increase their ability to care for their children.

Percent of Investigations that Found Some Credible Evidence of Abuse or Neglect
January 2017 – August 2020

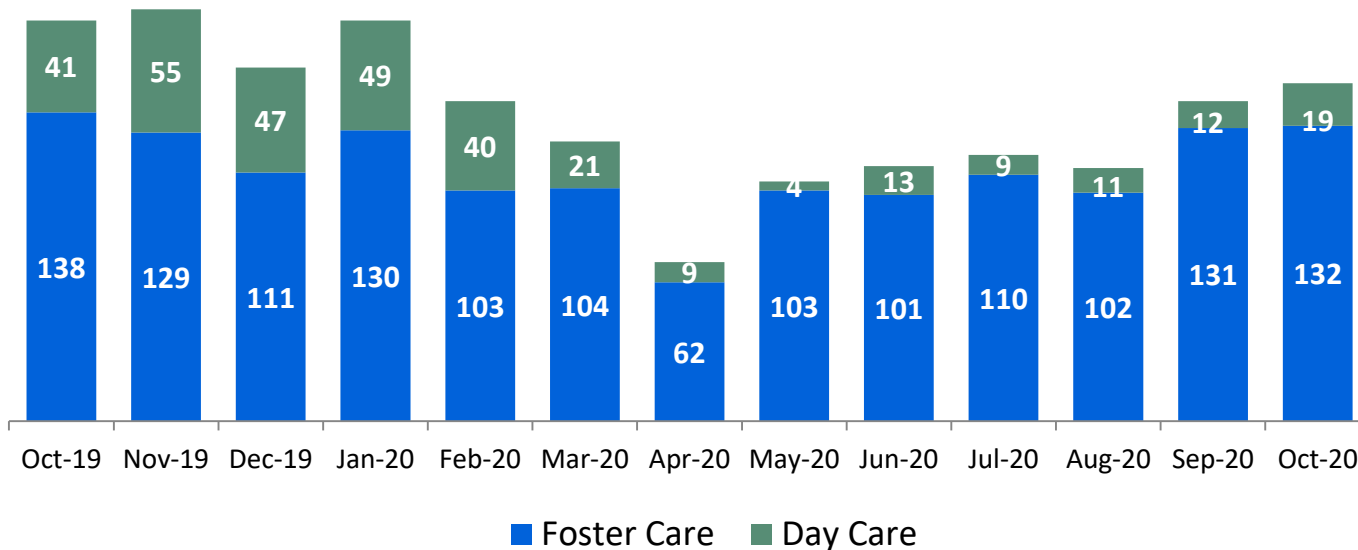


Average Child Protection Caseload*
 August 2019 – October 2019 and August 2020 – October 2020



*Prior to December 2018 caseloads are of Protective/Diagnostic Unit (Child Protection, School Based, Sex Abuse and Hospital Units) caseworkers only. Beginning December 2018, all caseload carrying Child Protection Specialists (CPS) in investigative and Family Assessment Response Units are included. Includes CPS in Primary and Case Manager roles only.

OSI Foster Care and Day Care* Investigations October 2019 – October 2020



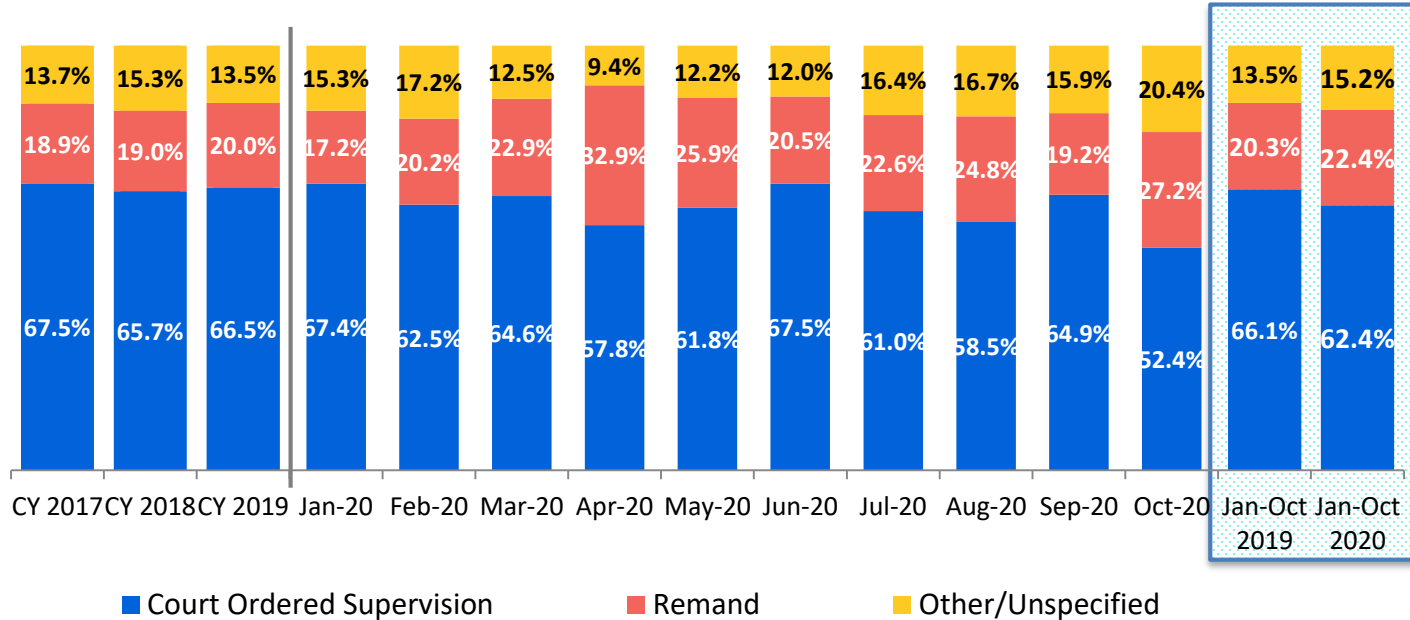
Calendar-Year-to-Date

Jan-Oct 2019	Jan-Oct 2020
574	187
1,363	1,078

	Oct 2019	Nov 2019	Dec 2019	Jan 2020	Feb 2020	Mar 2020	Apr 2020	May 2020	Jun 2020	Jul 2020	Aug 2020	Sep 2020	Oct 2020	Jan-Oct 2019	Jan-Oct 2020
Number of Investigations	179	184	158	179	143	125	71	107	114	119	113	143	151	1,937	1,265

*Day Care investigations include alleged abuse or maltreatment of children perpetrated by someone who cares for children in a setting that is not the child's familial home and that requires state or local government approval and is subject to state laws, regulations, and oversight. This includes, but is not limited to, ACS/DOE Early Care and Education programs.

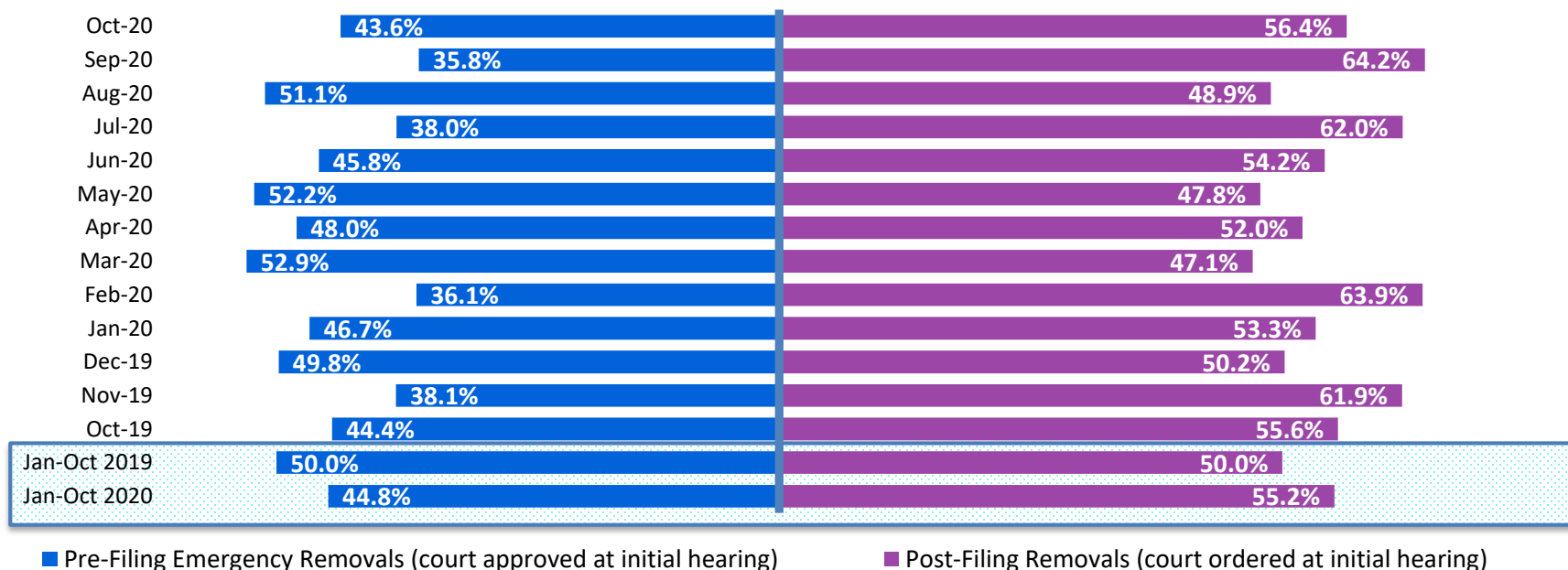
Article 10 Filings and Initial Hearing Outcomes, Children
CY 2017 – October 2020



	CY 2017	CY 2018	CY 2019	Jan 2020	Feb 2020	Mar 2020	Apr 2020	May 2020	Jun 2020	Jul 2020	Aug 2020	Sep 2020	Oct 2020	Jan-Oct 2019	Jan-Oct 2020
Children with Article 10 Filings	15,975	13,319	12,332	1,044	1,028	816	374	532	576	628	544	699	717	10,323	6,958

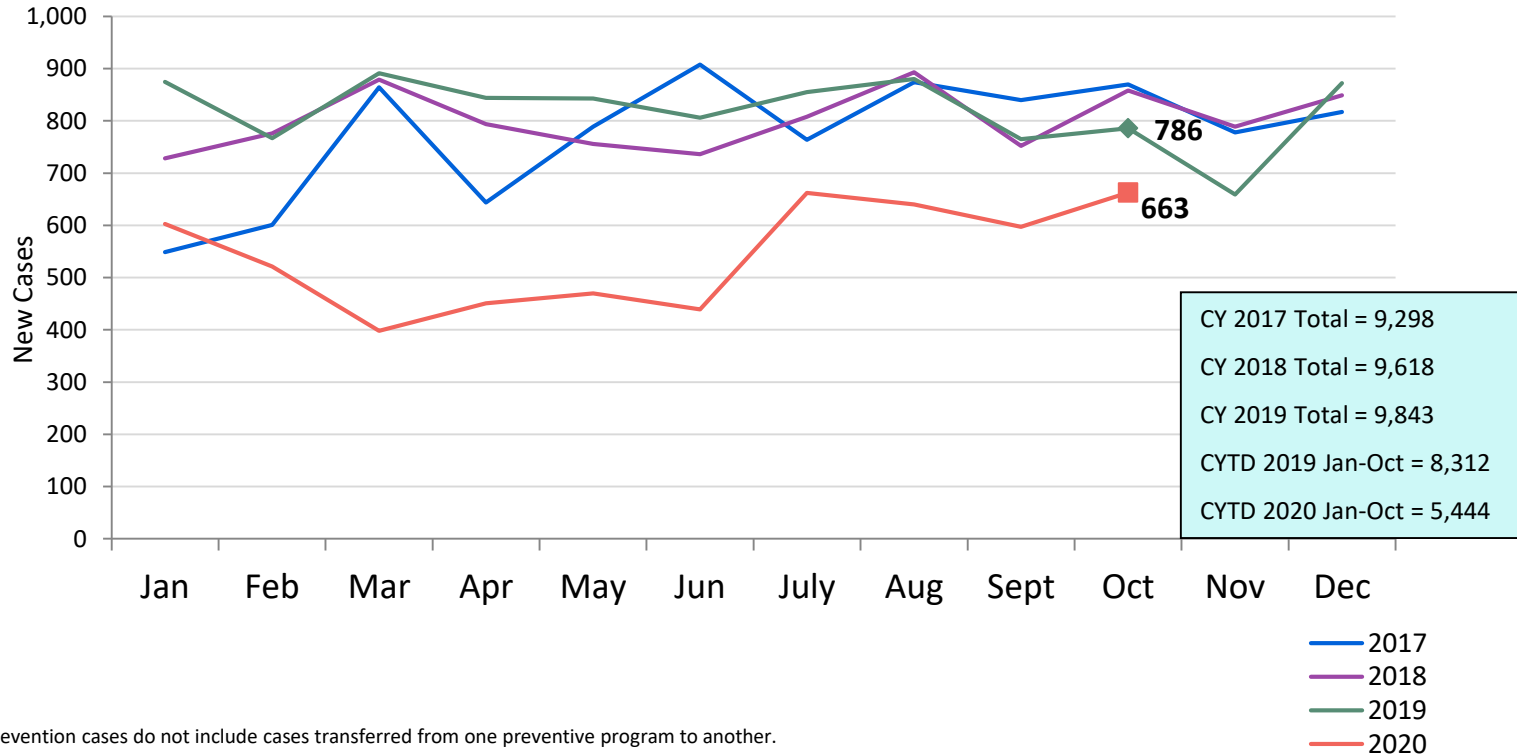
Note: The category "Other/Unspecified" includes released with no supervision, no order issued and no outcome specified.

Remands Approved at Initial Article 10 Hearing by Removal Status October 2019 – October 2020



	Oct 2019	Nov 2019	Dec 2019	Jan 2020	Feb 2020	Mar 2020	Apr 2020	May 2020	Jun 2020	Jul 2020	Aug 2020	Sep 2020	Oct 2020	Jan-Oct 2019	Jan-Oct 2020
Children Remanded	243	168	201	180	208	187	123	138	118	142	135	134	195	2,099	1,560

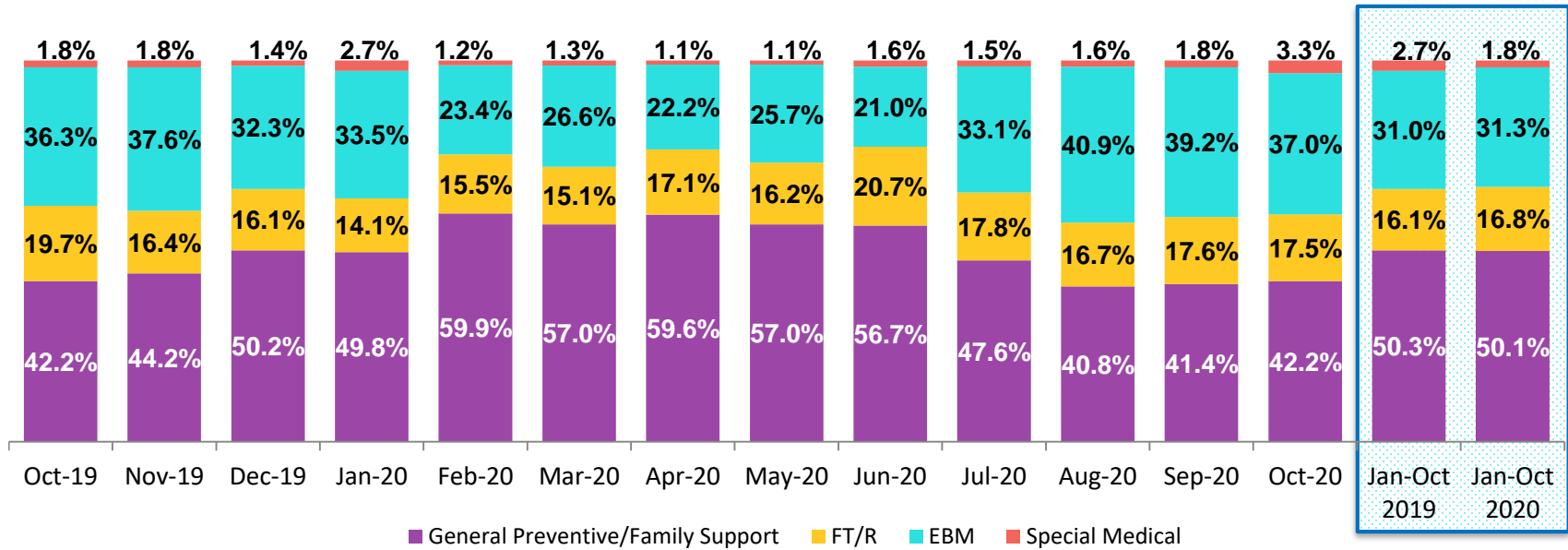
New Child Welfare Prevention Cases January 2017 – October 2020



*New prevention cases do not include cases transferred from one preventive program to another.

See Pages 31 and 32 of the Appendix for supporting data.

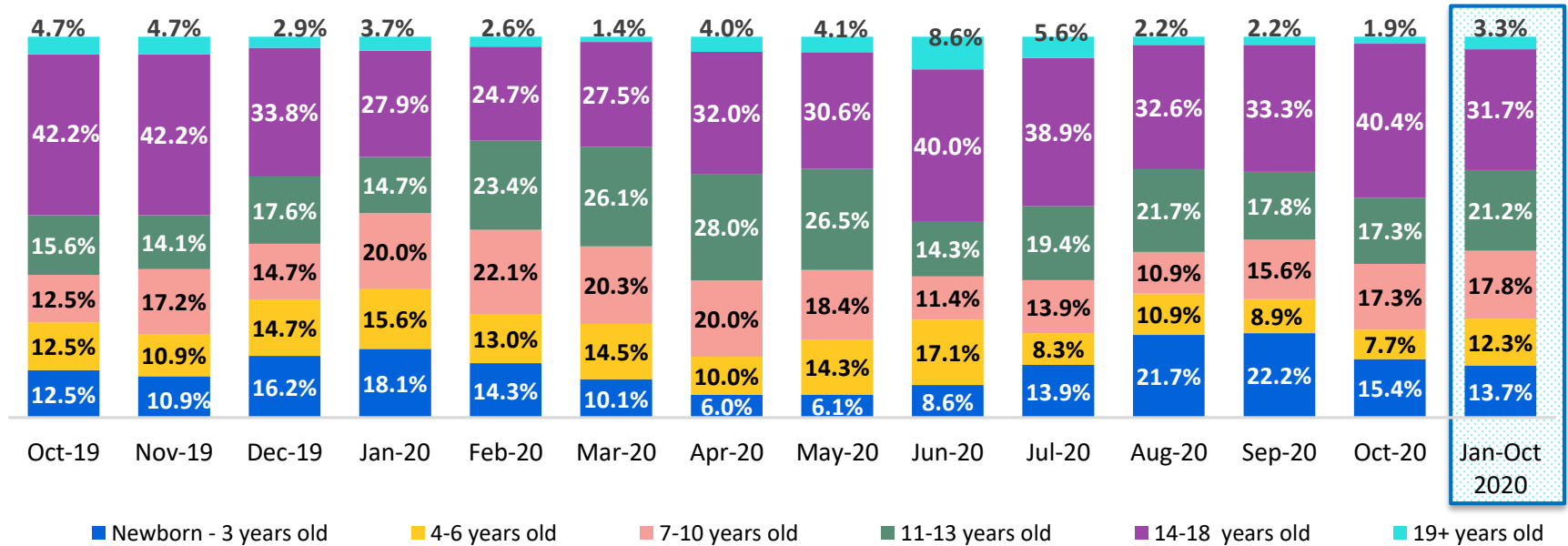
New Child Welfare Prevention Cases by Program Type*
October 2019 – October 2020



	Oct 2019	Nov 2019	Dec 2019	Jan 2020	Feb 2020	Mar 2020	Apr 2020	May 2020	Jun 2020	Jul 2020	Aug 2020	Sep 2020	Oct 2020	Jan-Oct 2019	Jan-Oct 2020
Number of New Preventive Cases	786	659	872	603	521	398	451	470	439	662	640	597	663	8,312	5,444

* New prevention cases do not include cases transferred from one prevention program to another.

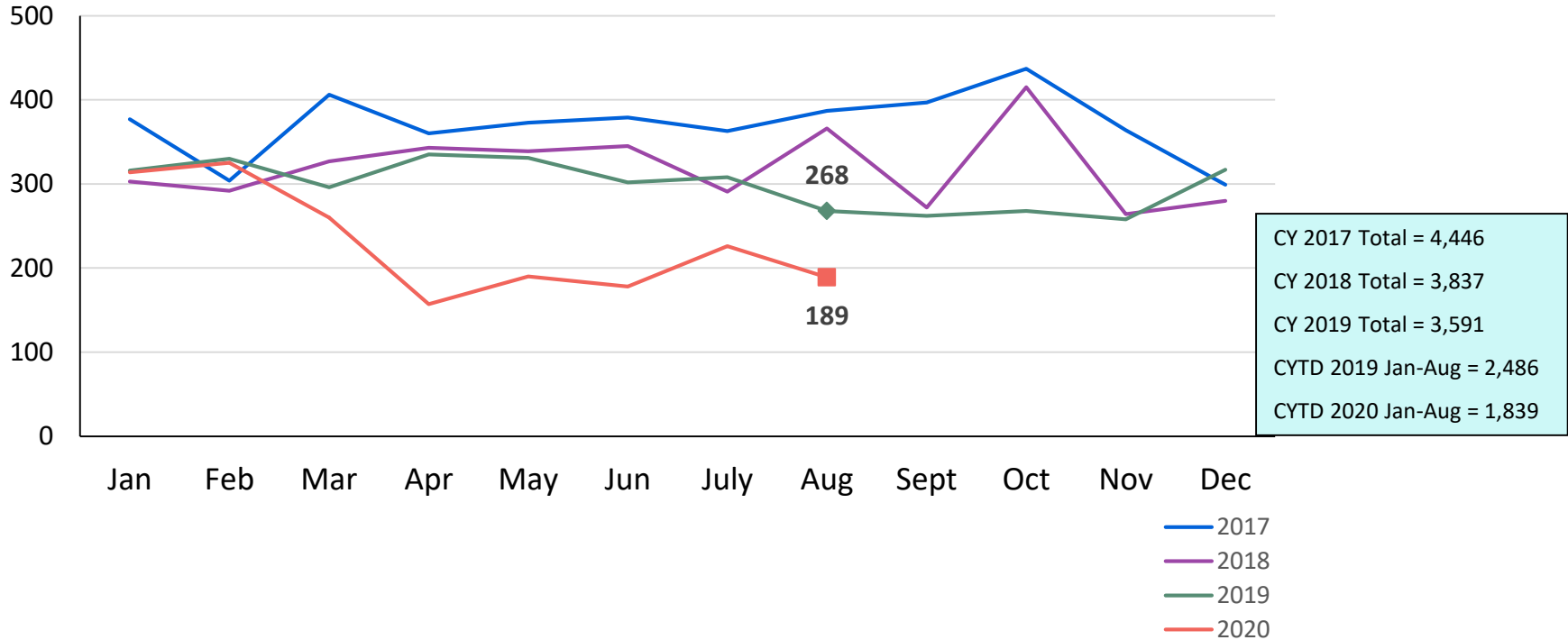
Average Daily Children’s Center Population*
October 2019 – October 2020



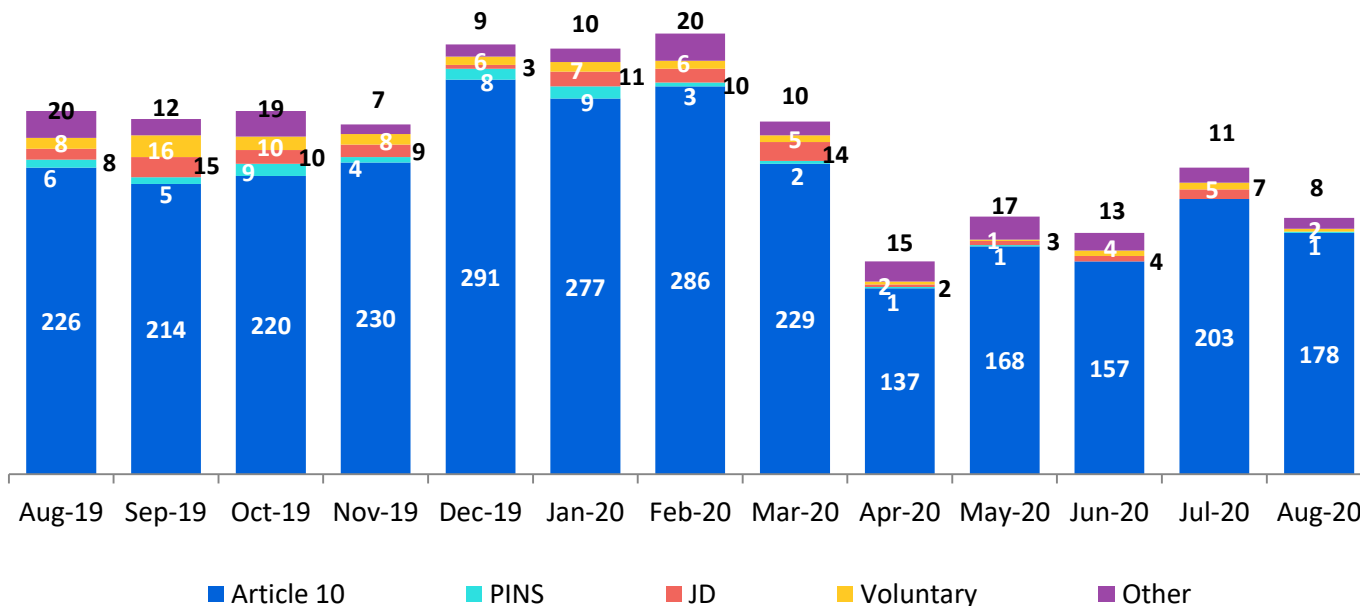
	Oct 2019	Nov 2019	Dec 2019	Jan 2020	Feb 2020	Mar 2020	Apr 2020	May 2020	Jun 2020	Jul 2020	Aug 2020	Sep 2020	Oct 2020	Jan-Oct 2019	Jan-Oct 2020
Average Number of Children	64	64	68	69	77	69	50	49	35	36	46	45	52	72	53

* YTD 2019 by age group data is not available, because different age groups were used from September 2018 to February 2019.

New Placements of Children into Foster Care
January 2017 – August 2020



Reason for New Placements of Children into Foster Care
August 2019 – August 2020

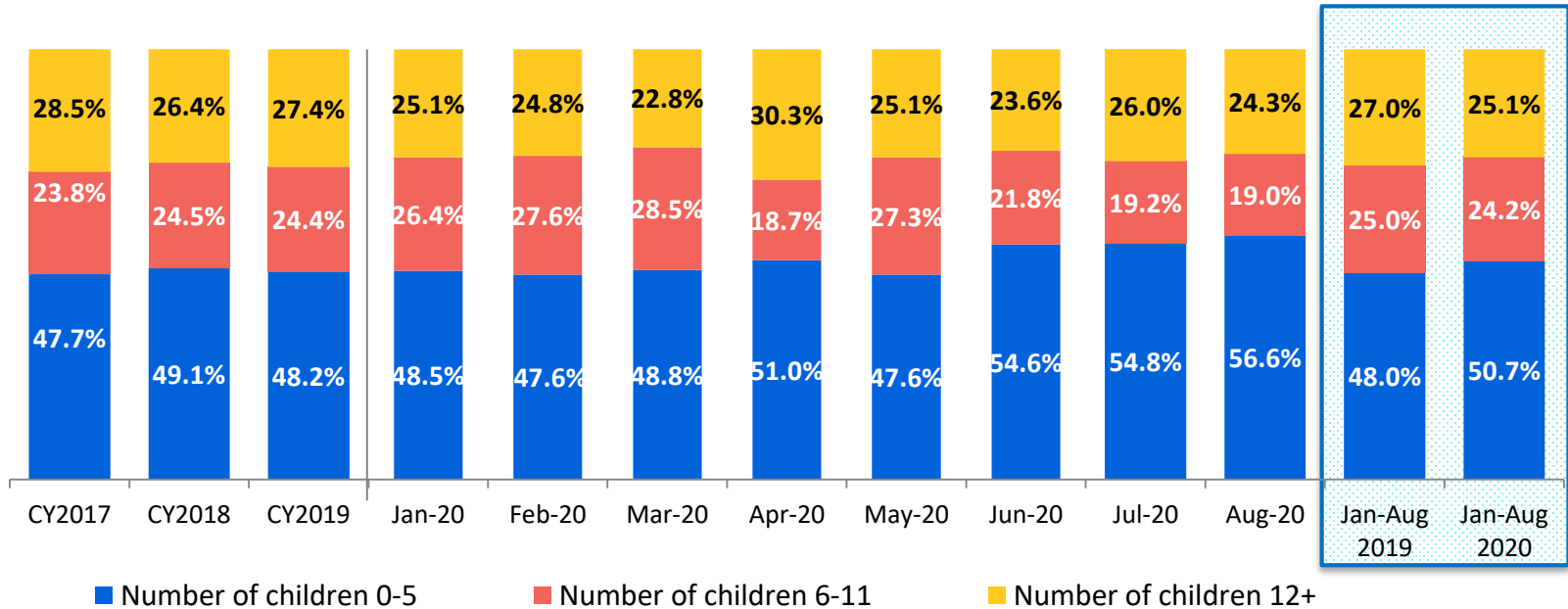


Calendar-Year-to-Date

Jan-Aug 2019	Jan-Aug 2020
80	104
116	32
57	51
44	17
2,189	1,635

	Aug 2019	Sep 2019	Oct 2019	Nov 2019	Dec 2019	Jan 2020	Feb 2020	Mar 2020	Apr 2020	May 2020	Jun 2020	Jul 2020	Aug 2020	CYTD Jan-Aug 2019	CYTD Jan-Aug 2020
Number of Placements	268	262	268	258	317	314	325	260	157	190	178	226	189	2,486	1,839

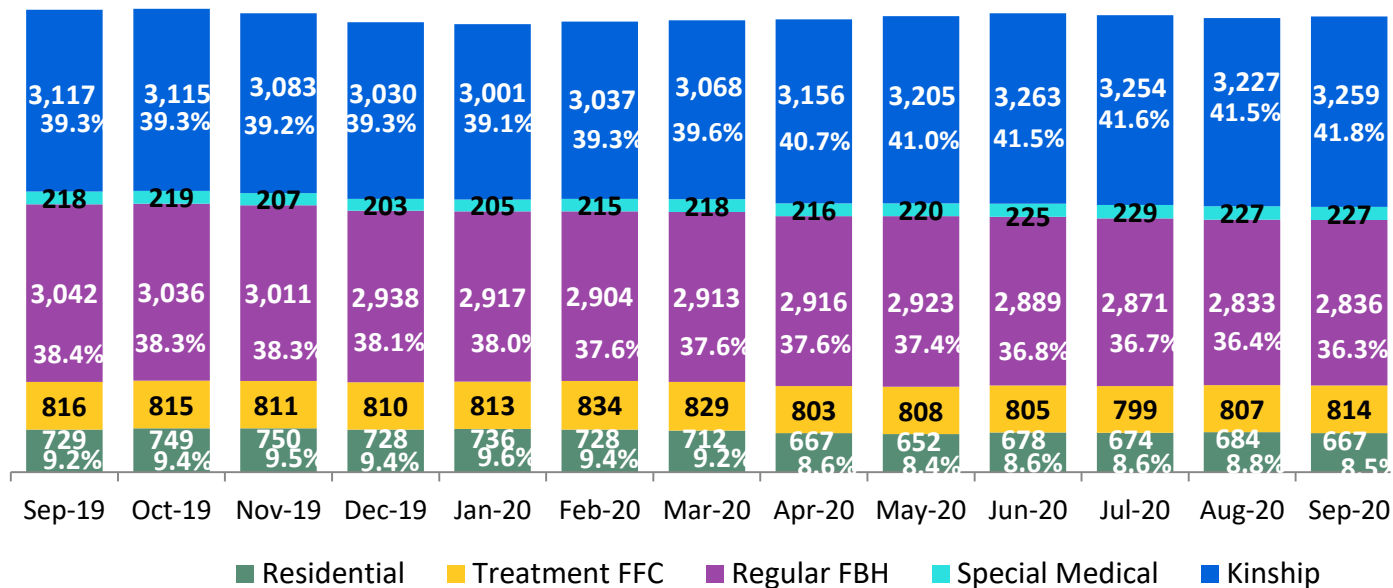
New Placements of Children into Foster Care* by Age
CY 2017 – August 2020



	CY 2017	CY 2018	CY 2019	Jan 2020	Feb 2020	Mar 2020	Apr 2020	May 2020	Jun 2020	Jul 2020	Aug 2020	CYTD Jan-Aug 2019	CYTD Jan-Aug 2020
Number of Placements	4,285	3,743	3,497	303	315	246	155	187	174	219	189	2,429	1,788

*Excludes CTH placements.

Children in Foster Care *
September 2019 – September 2020 (end of month)



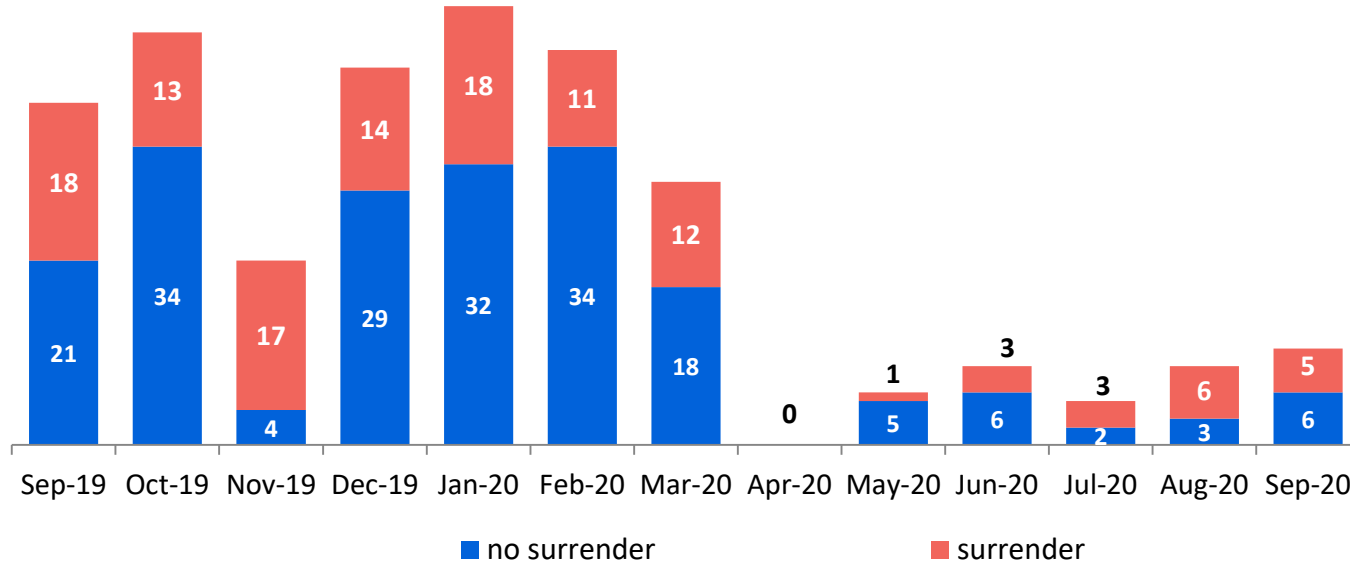
Calendar-Year-to-Date (Average)

Jan-Sep 2019	Jan-Sep 2020
3,186	3,163
220	220
3,214	2,889
828	812
741	689

	Sep 2019	Oct 2019	Nov 2019	Dec 2019	Jan 2020	Feb 2020	Mar 2020	Apr 2020	May 2020	Jun 2020	Jul 2020	Aug 2020	Sep 2020	CYTD Jan-Sep 2019	CYTD Jan-Sep 2020
Number in Foster Care	7,922	7,934	7,862	7,709	7,671	7,718	7,740	7,758	7,808	7,860	7,827	7,778	7,803	8,190	7,774

*Excludes CTH placements and includes children in 24 hour care and approximately 200 young children who are living in foster homes or residential care facilities with their mothers who are in foster care (8D children).

Children Freed for Adoption, Surrender by at Least One Parent
September 2019 – September 2020

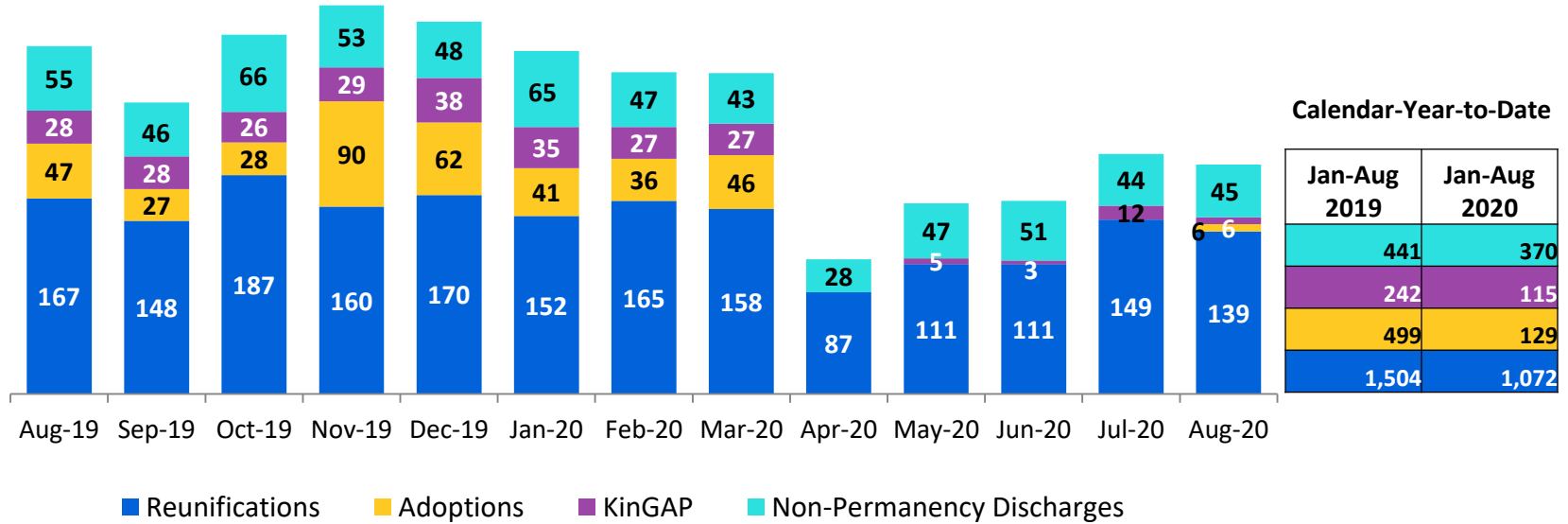


Calendar-Year-to-Date

Jan-Sep 2019	Jan-Sep 2020
155	59
263	106

	Sep 2019	Oct 2019	Nov 2019	Dec 2019	Jan 2020	Feb 2020	Mar 2020	Apr 2020	May 2020	Jun 2020	Jul 2020	Aug 2020	Sep 2020	CYTD Jan-Sep 2019	CYTD Jan-Sep 2020
Number Freed for Adoption	39	47	21	43	50	45	30	0	6	9	5	9	11	418	165

Permanency and Non-Permanency* Discharges from Foster Care**
August 2019 – August 2020

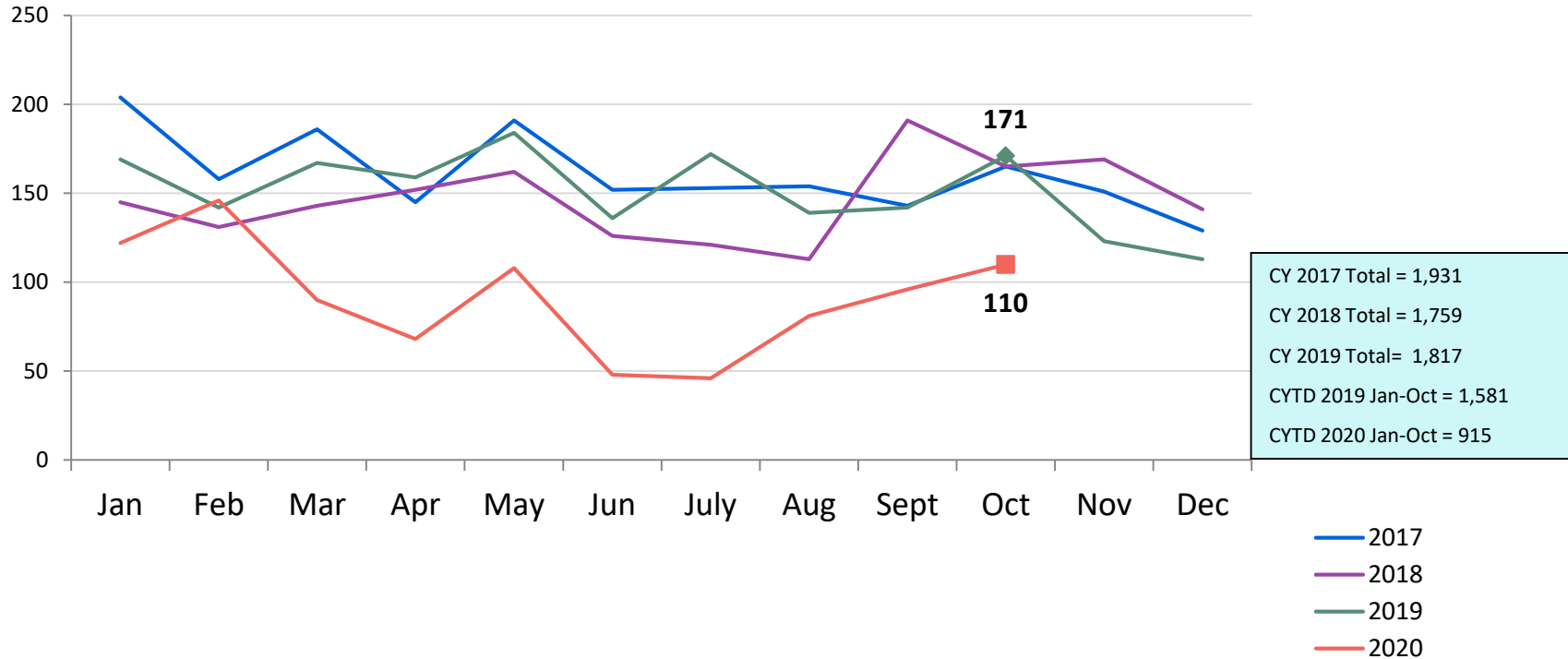


	Aug 2019	Sep 2019	Oct 2019	Nov 2019	Dec 2019	Jan 2020	Feb 2020	Mar 2020	Apr 2020	May 2020	Jun 2020	Jul 2020	Aug 2020	CYTD Jan-Aug 2019	CYTD Jan-Aug 2020
Number of Discharges	297	249	307	332	318	293	275	274	115	163	165	205	196	2,686	1,686

*Non-permanency discharges include AWOL, APPLA (youth 18-20 years old discharged to self and youth who reached 21 while in care), and other discharge destinations such as psychiatric institutions and correctional facilities and discharges with unspecified destinations.

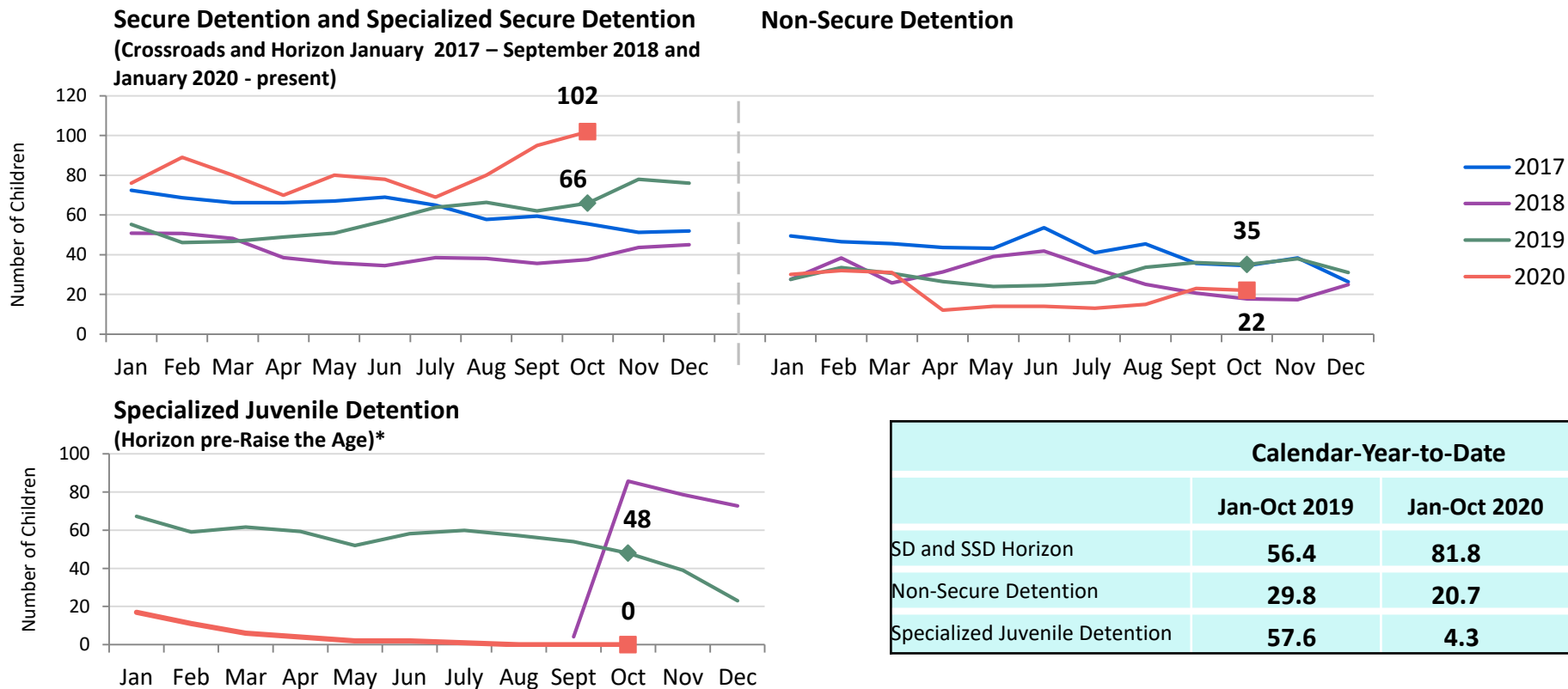
**Excludes discharges of youth from CTH placements.

Total Monthly Admissions to Detention
January 2017 – October 2020*



*Beginning in September 2018 detention admissions include admissions to the Horizon Juvenile Facility of 16 and 17 year olds moved off Rikers Island and pre-Raise the Age 17 year olds.

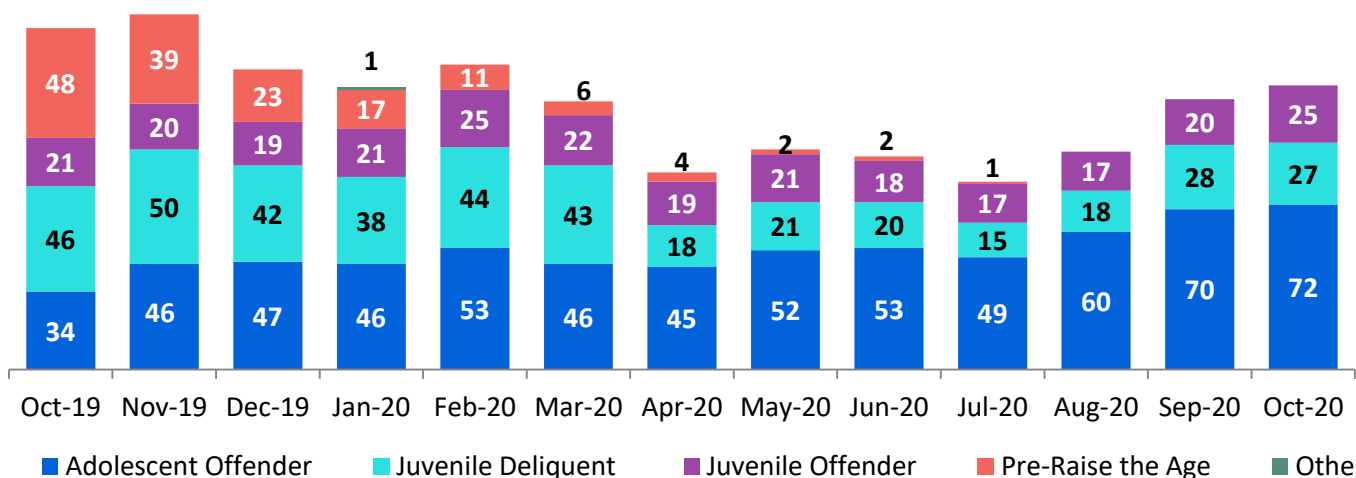
**Detention Monthly Average Daily Population
January 2017 – October 2020***



Calendar-Year-to-Date		
	Jan-Oct 2019	Jan-Oct 2020
SD and SSD Horizon	56.4	81.8
Non-Secure Detention	29.8	20.7
Specialized Juvenile Detention	57.6	4.3

*Beginning in September 2018 the Horizon Juvenile Facility was housing 16 and 17 year olds moved off Rikers Island and pre-Raise the Age 17 year olds.

Detention Total Monthly Average Daily Population by Case Type* October 2019 – October 2020



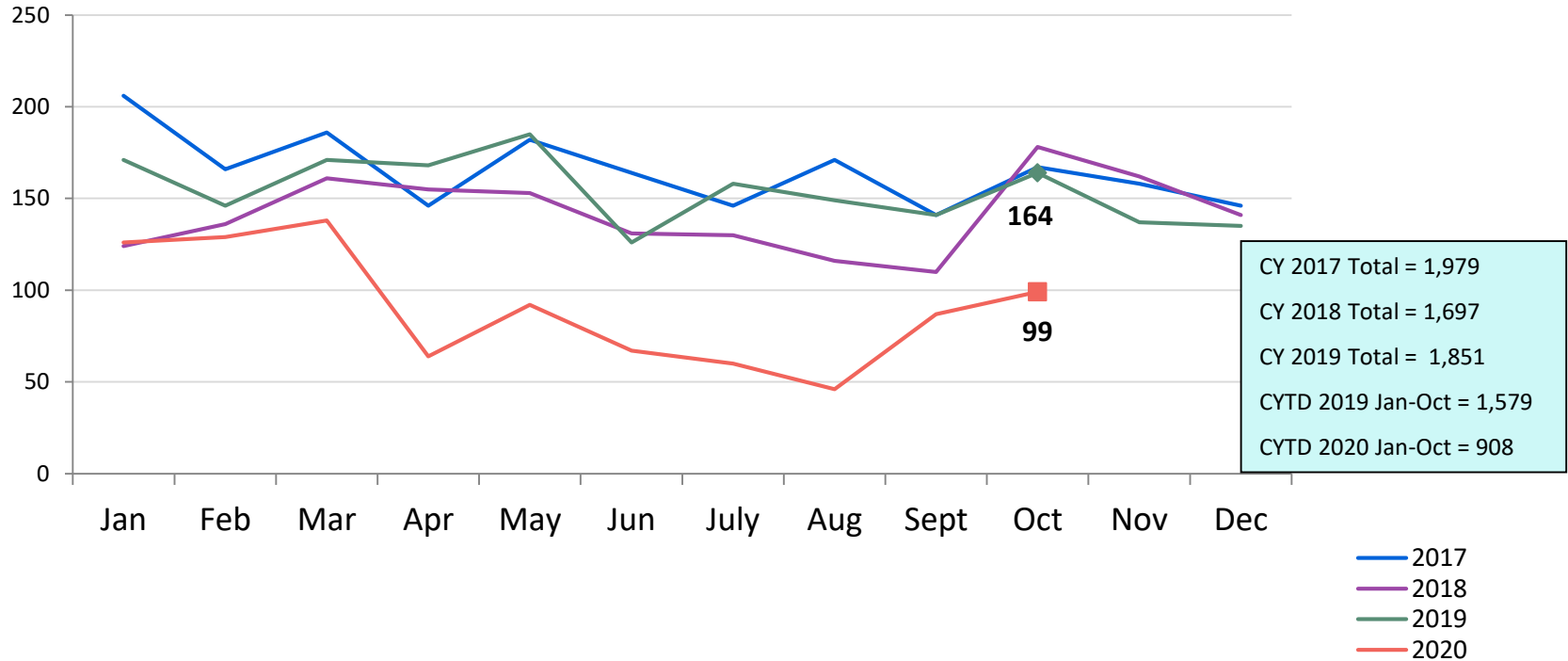
Jan-Oct 2019	Jan-Oct 2020
0.8	0.2
57.6	4.3
20.3	20.4
39.4	27.2
25.6	54.7

Total Average Daily Population

Oct 2019	Nov 2019	Dec 2019	Jan 2020	Feb 2020	Mar 2020	Apr 2020	May 2020	Jun 2020	Jul 2020	Aug 2020	Sep 2020	Oct 2020	Jan-Oct 2019	Jan-Oct 2020
149	155	131	123	133	117	86	96	94	83	95	118	124	143.8	106.9

*Case Type definitions: Adolescent Offender (AO) is a person 16 years of age charged with a felony on or after 10/1/18 and a person 17 years of age charged with a felony on or after 10/1/19; Juvenile Delinquent (JD) is a person 7-15 years of age who has committed an act which would be considered a crime if the person were old enough and capable of being treated as an adult. Sixteen year olds charged with a misdemeanor (except those charged under NYS Vehicle and Traffic Law) on or after 10/1/18 and 17 year olds charged on or after 10/1/19 are also JDs.; Juvenile Offender (JO) a person 13-15 years of age with a serious violent felony charge; Pre-Raise the Age is a person who was 16 or 17 years old when transferred off Rikers Island 10/1/18 and 17 year olds charged with crimes 10/1/18- 9/30/19; and Other case type includes youth detained for other authorities and ACS warrants.

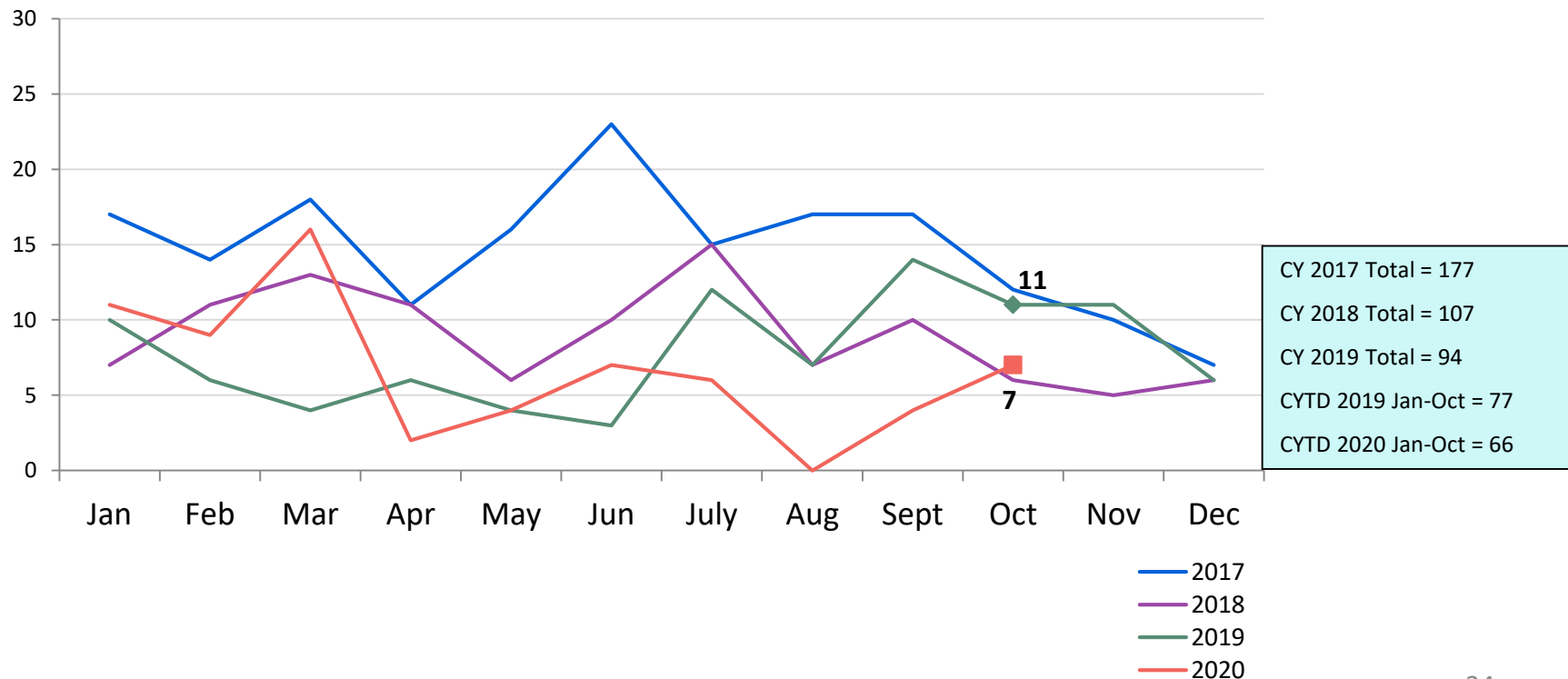
Total Monthly Releases from Detention
January 2017 – October 2020*



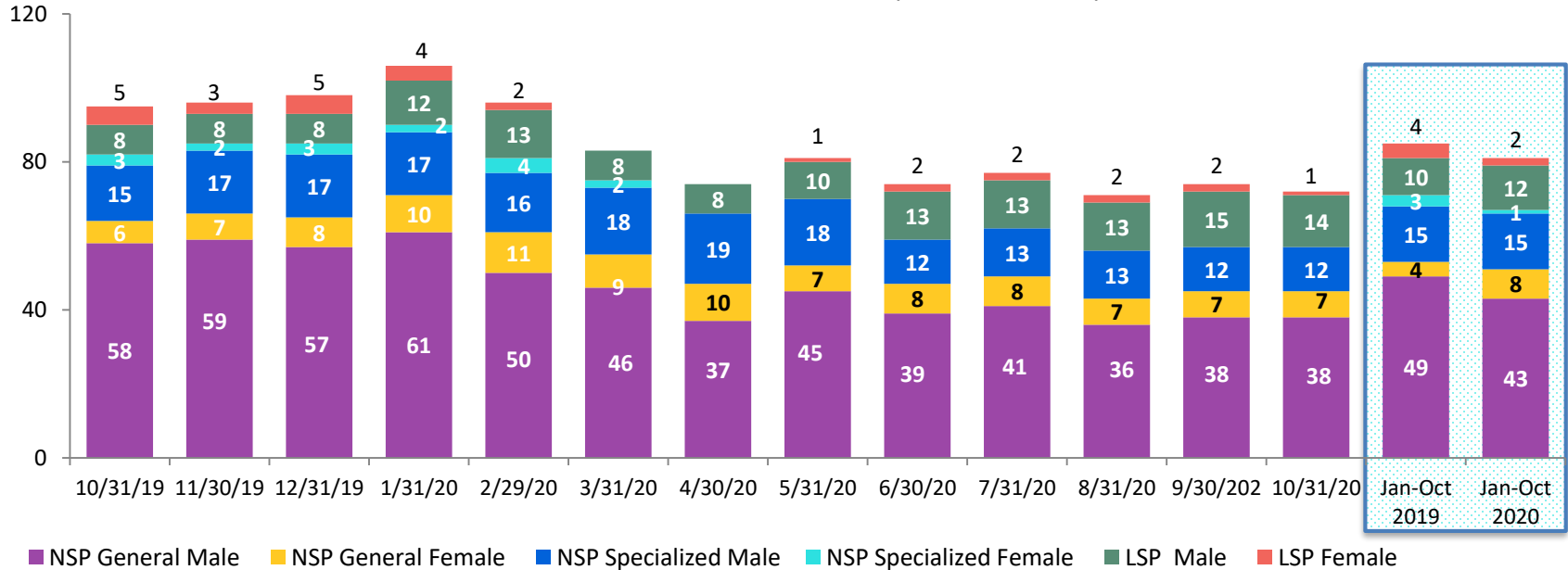
— 2017
 — 2018
 — 2019
 — 2020

*Beginning in October 2018 detention releases include releases from the Horizon Juvenile Facility of 16 and 17 year olds moved off Rikers Island and pre-Raise the Age 17 year olds.

Close to Home Admissions*
January 2017 – October 2020

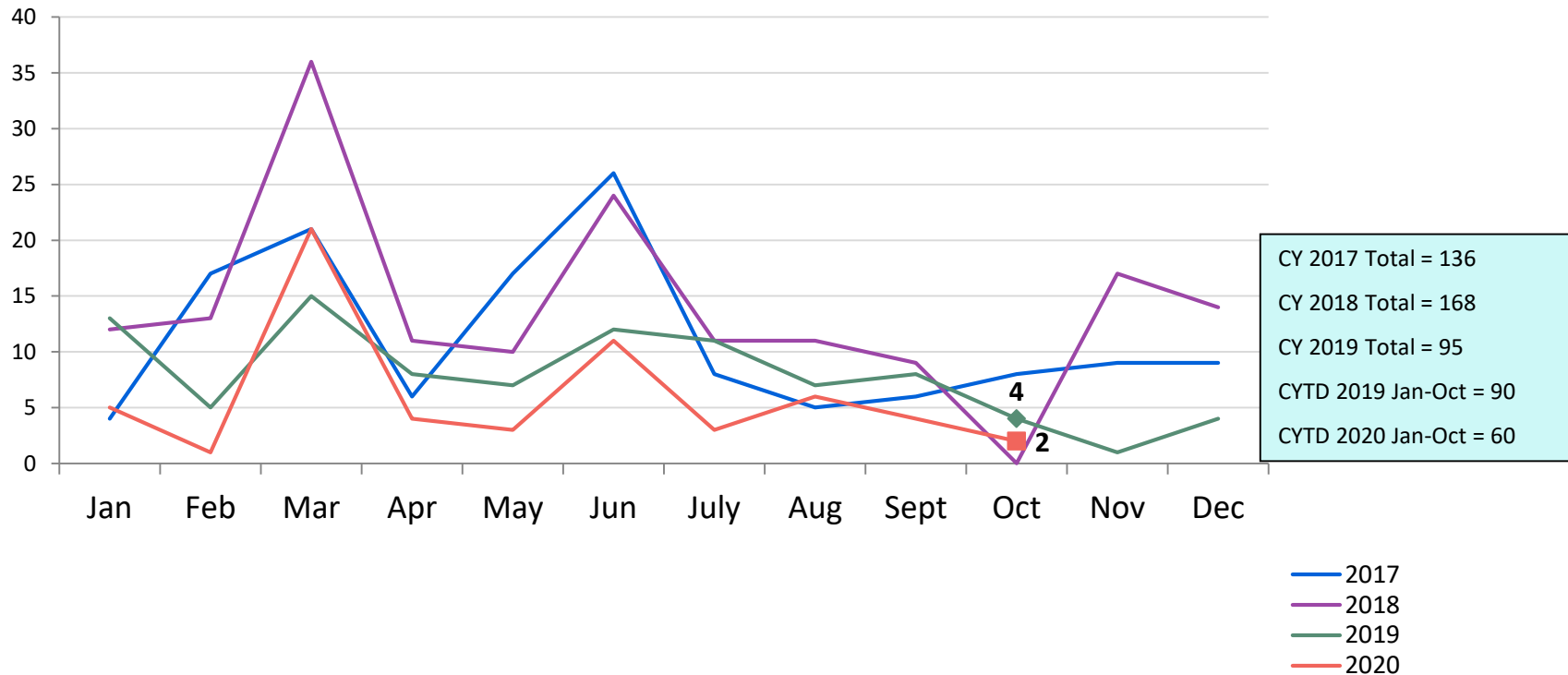


CTH Placement, in 24-hour Care
October 2019 – October 2020 (end of month)

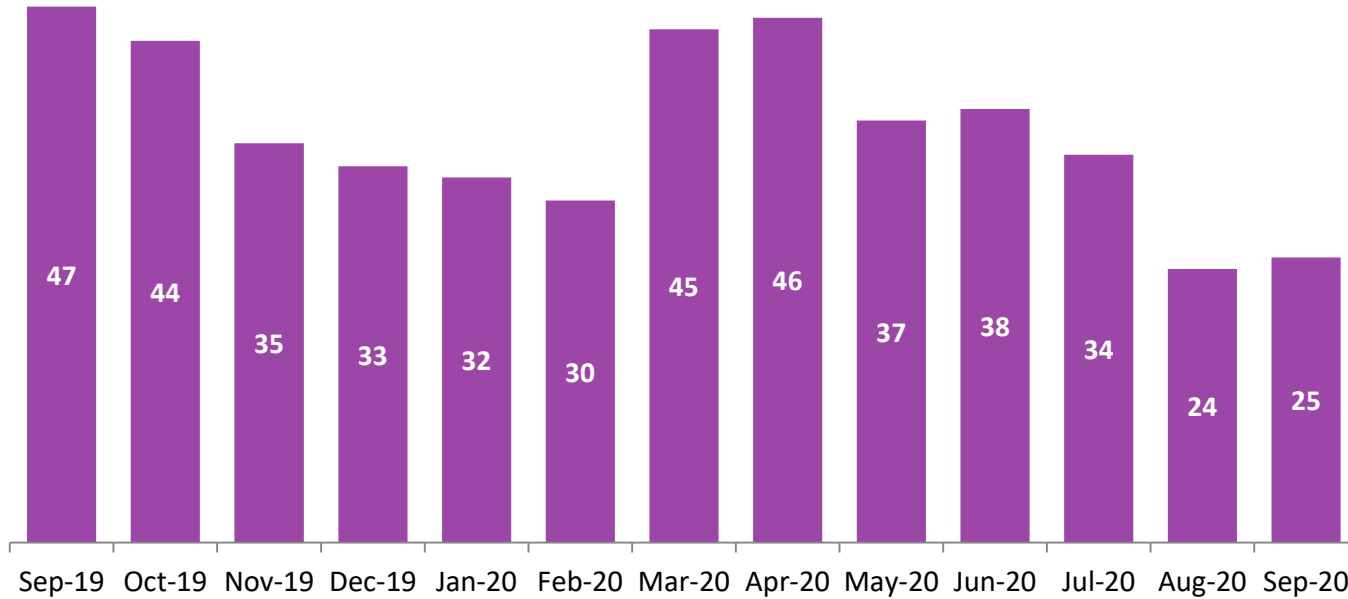


Number in Placement															CYTD Monthly Average	
	10/31/19	11/30/19	12/31/19	1/31/20	2/29/20	3/31/20	4/30/20	5/31/20	6/30/20	7/31/20	8/31/20	9/30/20	10/31/20	Jan-Oct 2019	Jan-Oct 2020	
NSP	82	85	85	90	81	75	66	70	59	62	56	57	57	71	67	
LSP	13	11	13	16	15	8	8	11	15	15	15	17	15	14	14	

Releases from Close to Home Placement to Aftercare
January 2017 – October 2020



CTH Aftercare Census
September 2019 – September 2020



Calendar-Year-to-Date Average

Jan-Sep 2019	Jan-Sep 2020
50	35

Appendix

Figure 1: SCR Intakes by Reporter Group, August 19 - October 19 and August 20 - October 20

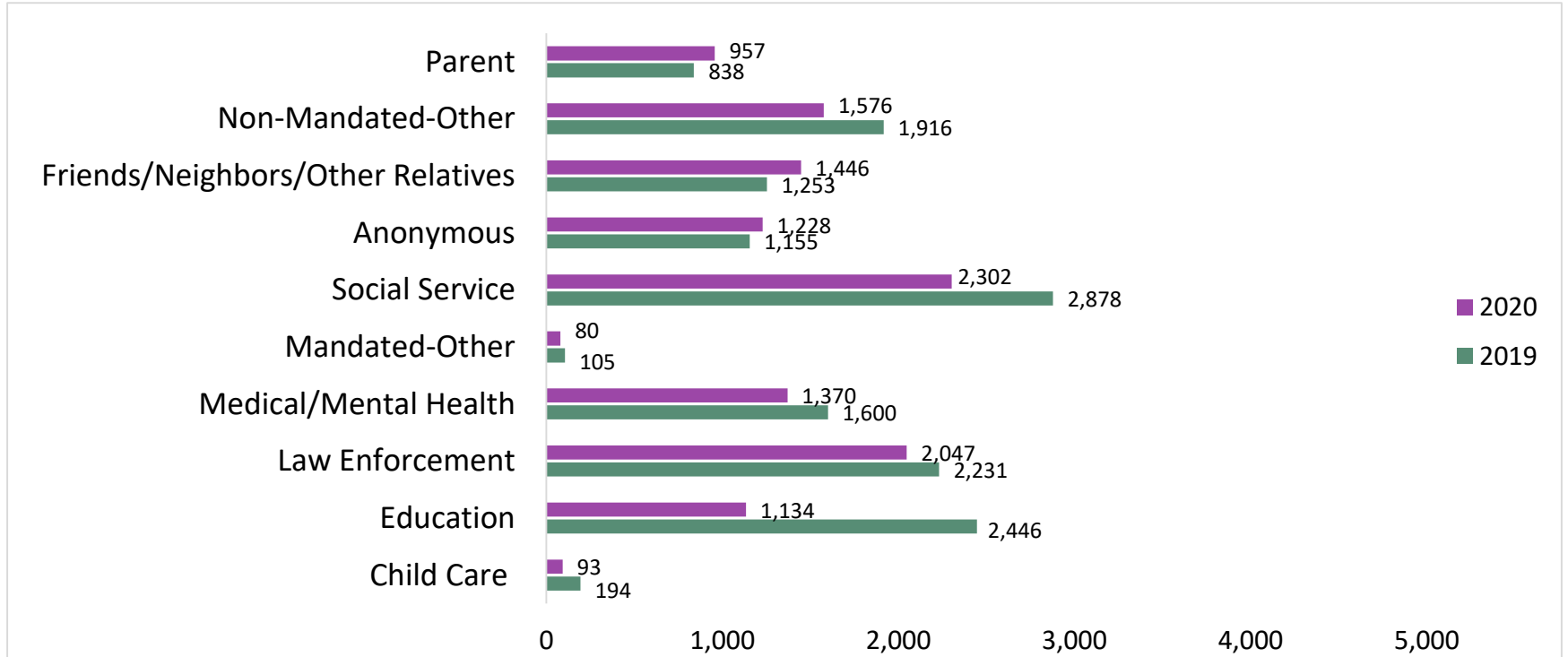
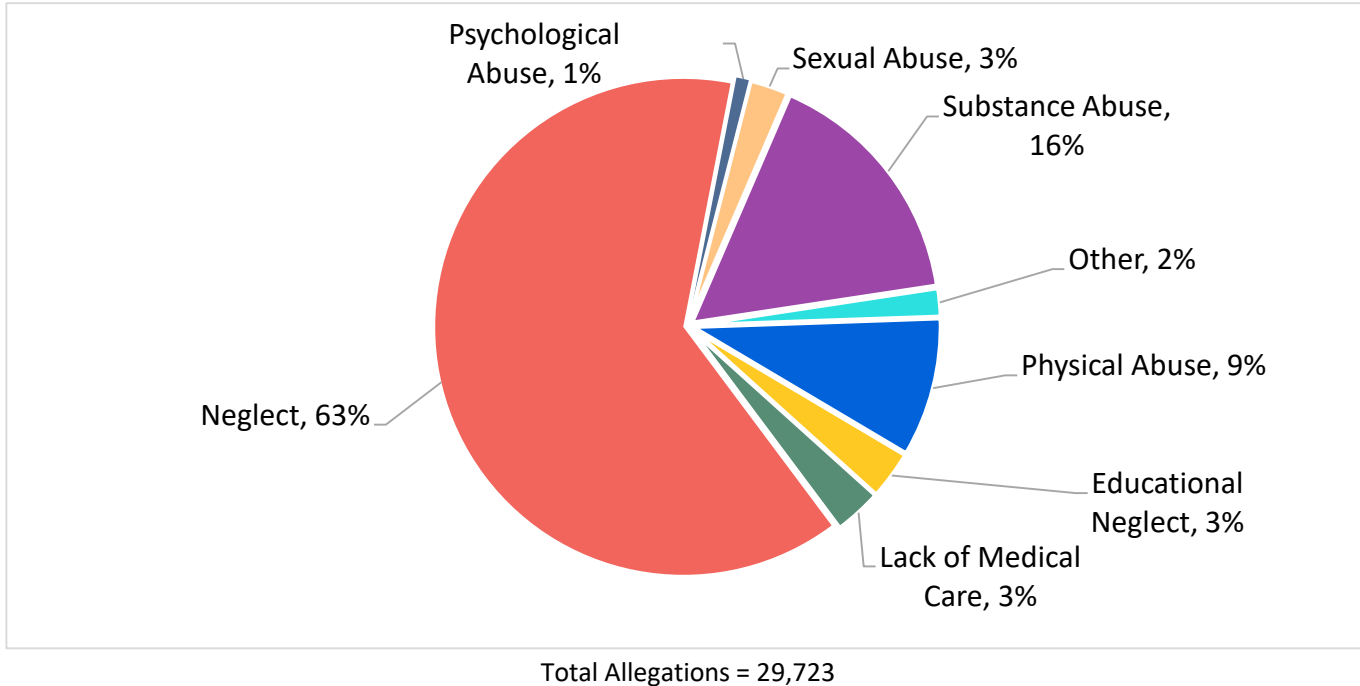


Figure 2: SCR Allegations
August 20 - October 20



Allegations are grouped as follows: Physical Abuse - burn, fatality, fracture, choking, twisting, shaking, excessive corporal punishment, internal injuries, lacerations, bruises, welts, poisoning, noxious substances; Educational Neglect – educational neglect; Lack of Medical Care – lack of medical care; Neglect - inadequate guardianship, inadequate food, clothing, shelter, lack of supervision, malnutrition, failure to thrive, swelling, dislocations, sprains; Psychological Abuse - isolation, emotional neglect; Sexual Abuse – sexual abuse; Substance Abuse - parental drug use, child drug use; and Other -abandonment, inappropriate custodial conduct.

Figure 3: SCR Investigations by Borough
 August 19 - October 19 and August 20 - October 20

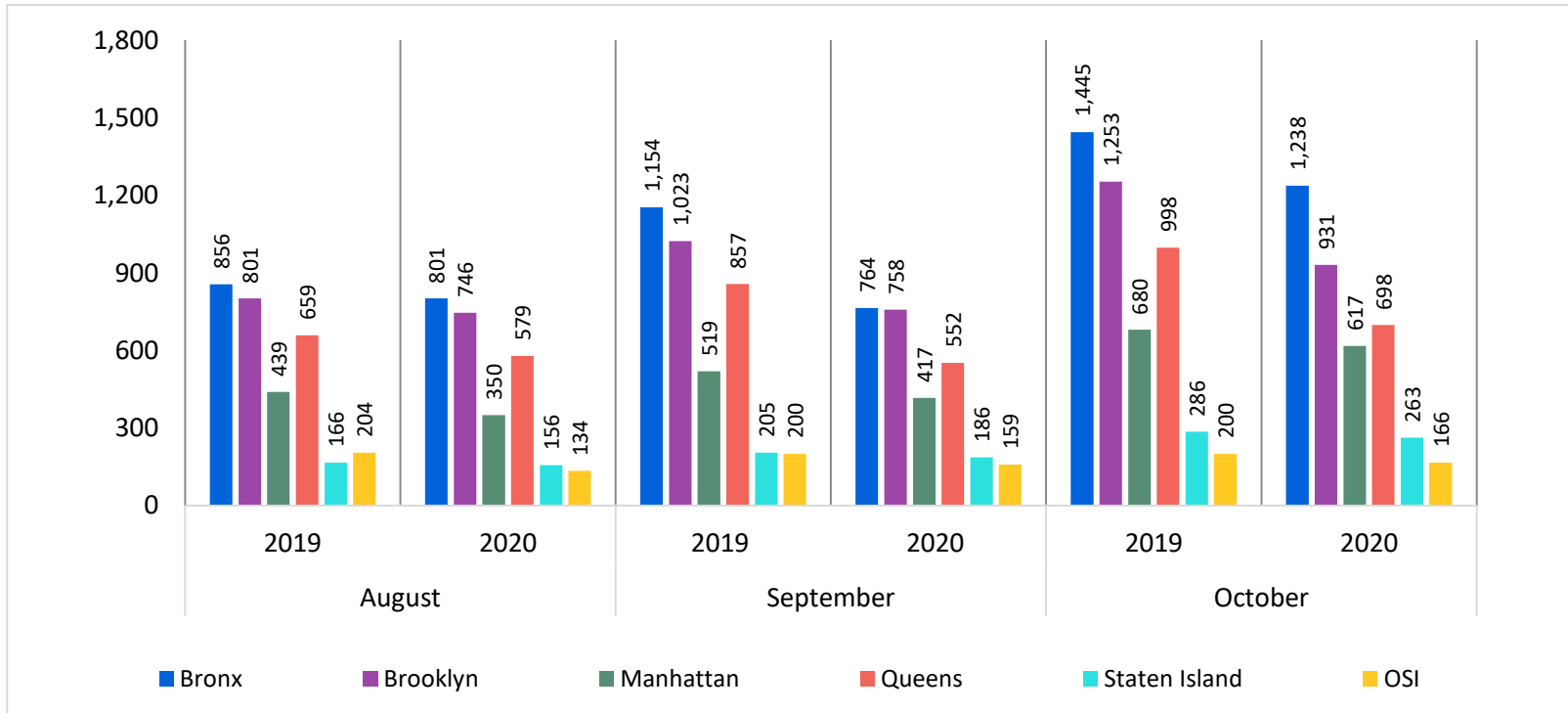


Table 1: SCR Investigations Changes by Borough
August 19 - October 19 and August 20 - October 20

Month	Year	Bronx	Brooklyn	Manhattan	Queens	Staten Island	OSI	Other	Total
August	2019	856	801	439	659	166	204	111	3,236
	2020	801	746	350	579	156	134	104	2,870
	% Change	-6.4%	-6.9%	-20.3%	-12.1%	-6.0%	-34.3%	-6.3%	-11.3%
September	2019	1,154	1,023	519	857	205	200	134	4,092
	2020	764	758	417	552	186	159	139	2,975
	% Change	-33.8%	-25.9%	-19.7%	-35.6%	-9.3%	-20.5%	3.7%	-27.3%
October	2019	1,445	1,253	680	998	286	200	149	5,011
	2020	1,238	931	617	698	263	166	124	4,037
	% Change	-14.3%	-25.7%	-9.3%	-30.1%	-8.0%	-17.0%	-16.8%	-19.4%
Total	2019	3,455	3,077	1,638	2,514	657	604	394	12,339
	2020	2,803	2,435	1,384	1,829	605	459	367	9,882
	% Change	-18.9%	-20.9%	-15.5%	-27.2%	-7.9%	-24.0%	-6.9%	-19.9%

Table 2: Child Welfare Prevention Cases: New and Closed
January 2018 – October 2020

Year	Month	New Cases	Closed Cases
2018	Jan-18	728	567
	Feb-18	776	783
	Mar-18	879	776
	Apr-18	794	613
	May-18	756	857
	Jun-18	736	837
	Jul-18	808	856
	Aug-18	893	954
	Sep-18	752	755
	Oct-18	858	767
	Nov-18	789	699
	Dec-18	849	717
2019	Jan-19	875	708
	Feb-19	767	726
	Mar-19	891	856
	Apr-19	844	802
	May-19	843	864
	Jun-19	806	841
	Jul-19	855	963
	Aug-19	880	929
	Sep-19	765	759
	Oct-19	786	875
	Nov-19	659	755
	Dec-19	872	745
2020	Jan-20	603	790
	Feb-20	521	871
	Mar-20	398	1,467
	Apr-20	451	1,369
	May-20	470	2,131
	Jun-20	439	2,389
	Jul-20	662	643
	Aug-20	640	500
	Sep-20	597	431
	Oct-20	663	407

Table 3: Referrals to Child Welfare Prevention Services by Source
January 2018 - October 2020

Year	Month	Total Referrals	DCP	FC Agencies	PPRS Transfer	School	Self	Other Sources*
2018	Jan-18	1,399	74.5%	1.5%	10.7%	1.4%	2.9%	9.0%
	Feb-18	1,302	76.8%	1.5%	7.5%	1.3%	3.5%	9.4%
	Mar-18	1,396	79.7%	1.5%	7.4%	1.2%	2.6%	7.5%
	Apr-18	1,383	80.0%	1.2%	5.9%	1.1%	3.1%	8.7%
	May-18	1,189	78.8%	1.3%	7.0%	1.0%	3.3%	8.7%
	Jun-18	1,284	81.9%	0.5%	7.6%	0.9%	3.2%	6.0%
	Jul-18	1,403	82.5%	0.7%	8.3%	0.6%	2.4%	5.5%
	Aug-18	1,391	82.1%	1.7%	6.8%	0.4%	2.7%	6.3%
	Sep-18	1,135	84.4%	1.5%	7.0%	0.9%	4.1%	2.1%
	Oct-18	1,345	78.4%	1.5%	8.0%	1.2%	3.9%	7.0%
	Nov-18	1,107	73.8%	1.4%	9.5%	1.5%	4.3%	9.5%
	Dec-18	1,179	68.7%	1.7%	10.9%	2.7%	5.1%	10.9%
2019	Jan-19	1,373	74.3%	1.7%	8.4%	1.6%	3.8%	10.3%
	Feb-19	1,096	77.5%	0.9%	7.9%	2.2%	2.8%	8.7%
	Mar-19	1,292	72.4%	1.2%	10.4%	1.5%	4.4%	10.1%
	Apr-19	1,299	76.9%	1.5%	7.5%	2.8%	3.8%	7.4%
	May-19	1,312	80.0%	1.1%	7.9%	1.8%	3.2%	6.1%
	Jun-19	1,169	82.5%	1.4%	7.4%	0.7%	2.7%	5.3%
	Jul-19	1,322	81.3%	0.9%	7.1%	0.8%	4.5%	5.4%
	Aug-19	1,239	77.4%	1.9%	7.4%	0.7%	5.9%	6.6%
	Sep-19	1,157	77.4%	1.4%	10.2%	1.0%	3.5%	6.4%
	Oct-19	1,242	72.1%	1.4%	11.4%	1.5%	4.4%	9.1%
	Nov-19	990	68.9%	1.6%	11.2%	2.6%	6.0%	9.7%
	Dec-19	1,250	73.2%	1.5%	9.2%	1.8%	6.5%	7.8%
2020	Jan-20	962	79.8%	1.6%	6.4%	1.1%	4.4%	6.7%
	Feb-20	855	85.7%	1.2%	7.0%	0.2%	2.1%	3.7%
	Mar-20	701	78.9%	0.9%	16.5%	0.3%	1.0%	2.4%
	Apr-20	887	66.6%	0.7%	29.0%	0.3%	0.8%	2.6%
	May-20	882	65.0%	1.0%	28.5%	0.8%	1.4%	3.4%
	Jun-20	998	59.6%	0.9%	36.2%	0.6%	0.7%	2.0%
	Jul-20	1,289	66.0%	0.7%	30.6%	0.2%	1.2%	1.3%
	Aug-20	957	79.6%	1.8%	14.2%	0.2%	2.0%	2.2%
	Sep-20	822	82.5%	2.2%	10.1%	0.4%	2.1%	2.8%
	Oct-20	894	83.1%	1.6%	8.1%	0.9%	2.8%	3.6%

Note: Data includes all referrals – accepted and rejected

*Other Community Sources includes the Department of Homeless Services, Family Court, FAP, Hospitals and Medical facilities, the NYC Housing Authority, Probation, and Sponsor Agencies.