



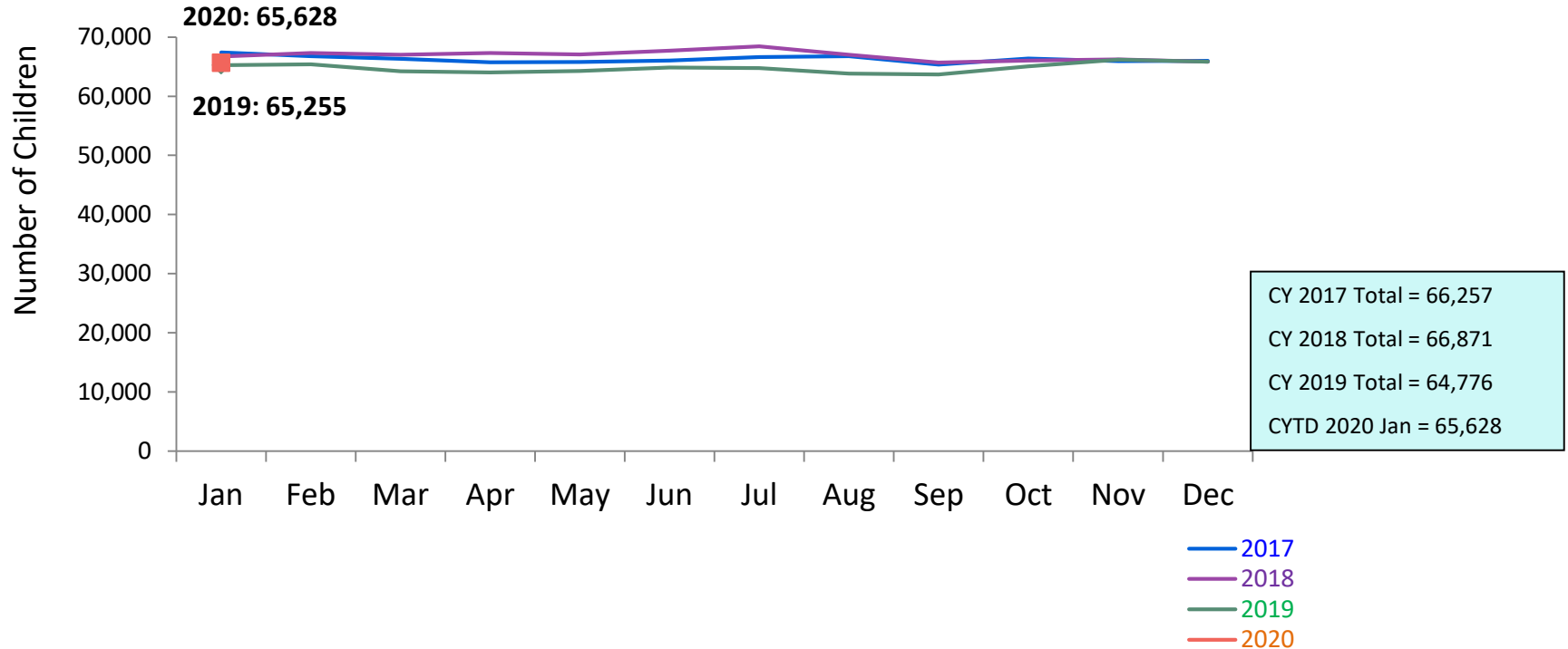
FLASH

monthly indicator

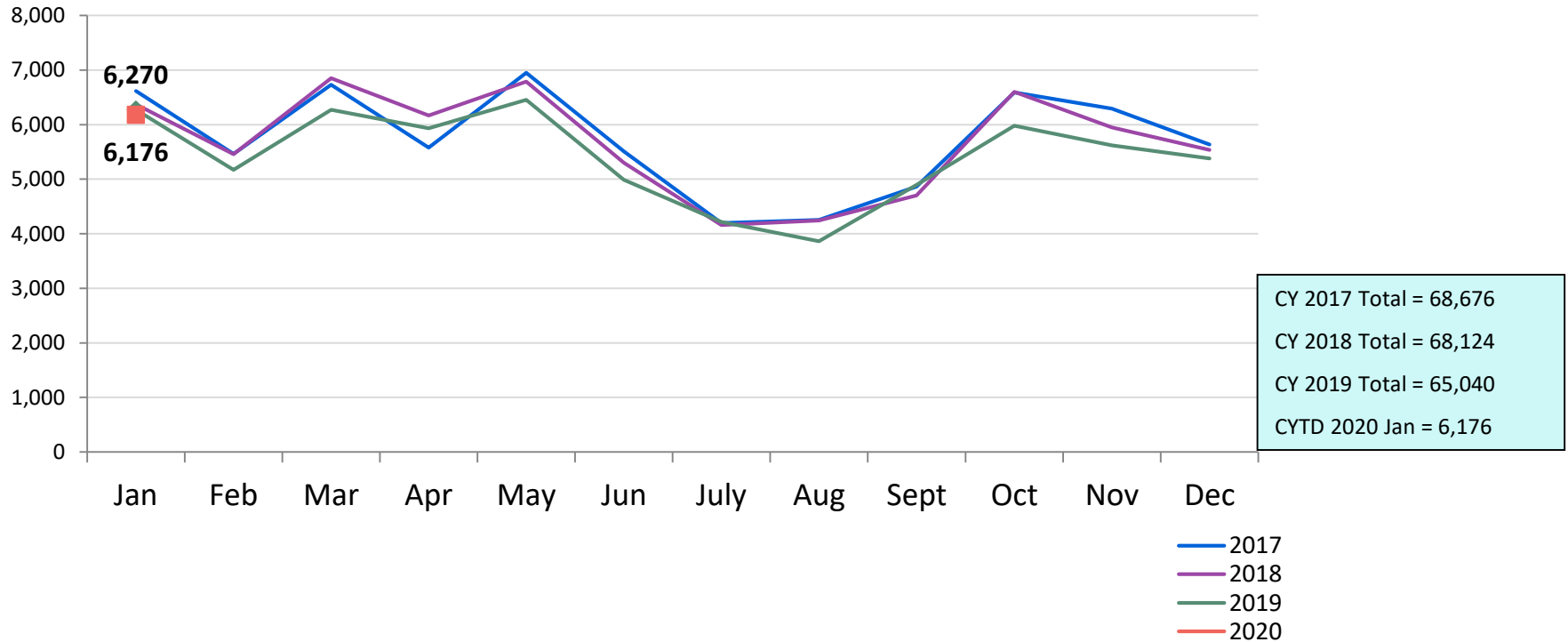
REPORT

February 2020

Children Using Vouchers for Child Care
January 2017 – January 2020 (End of Month)



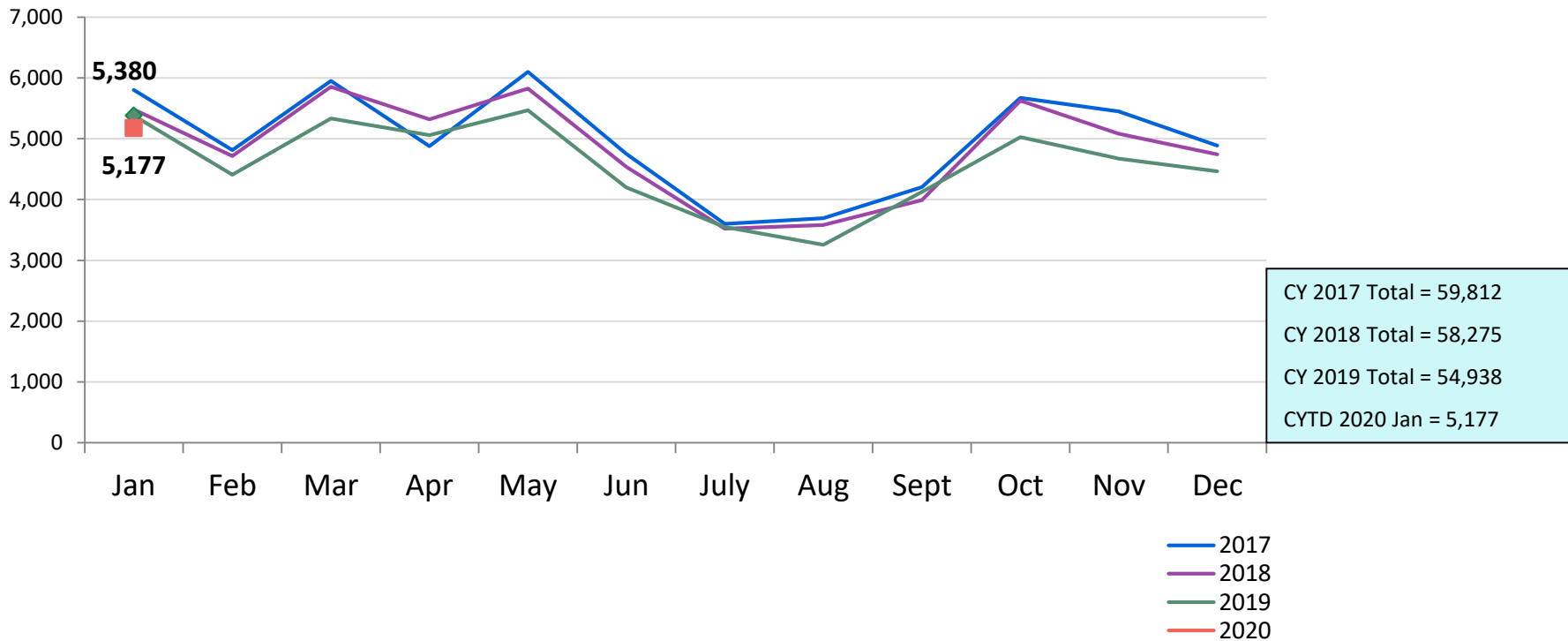
SCR Intakes
January 2017 - January 2020



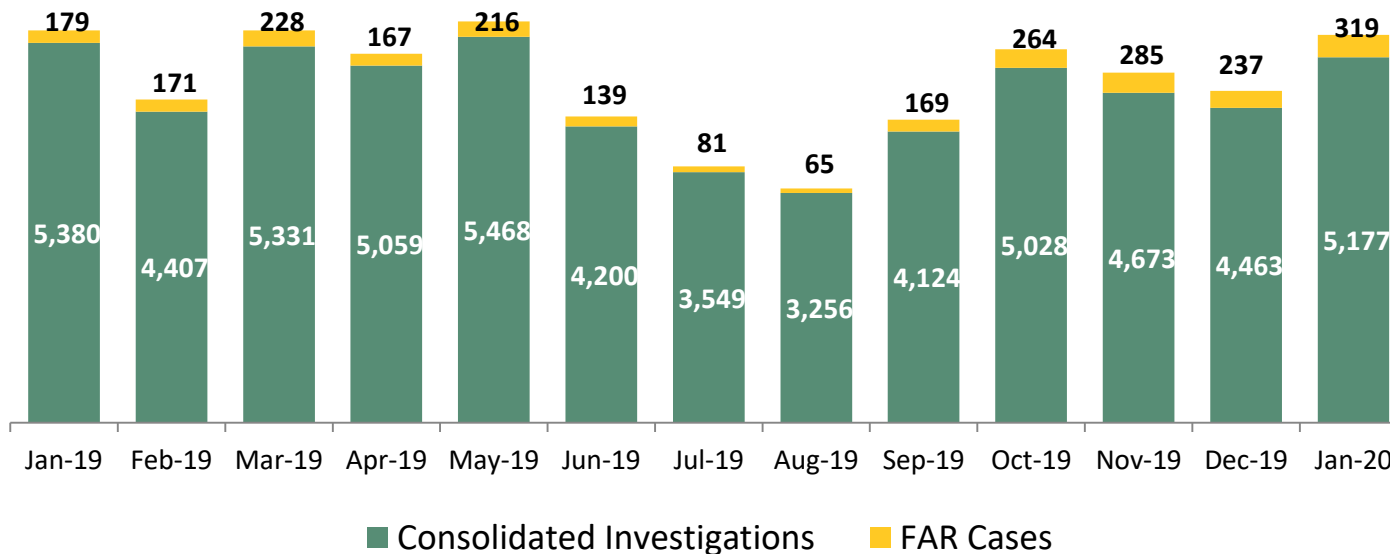
Note: SCR intakes can be followed by investigation or Family Assessment Response.

See Pages 27 through 30 of the Appendix for supporting data.

SCR Consolidated Investigations
January 2017 – January 2020



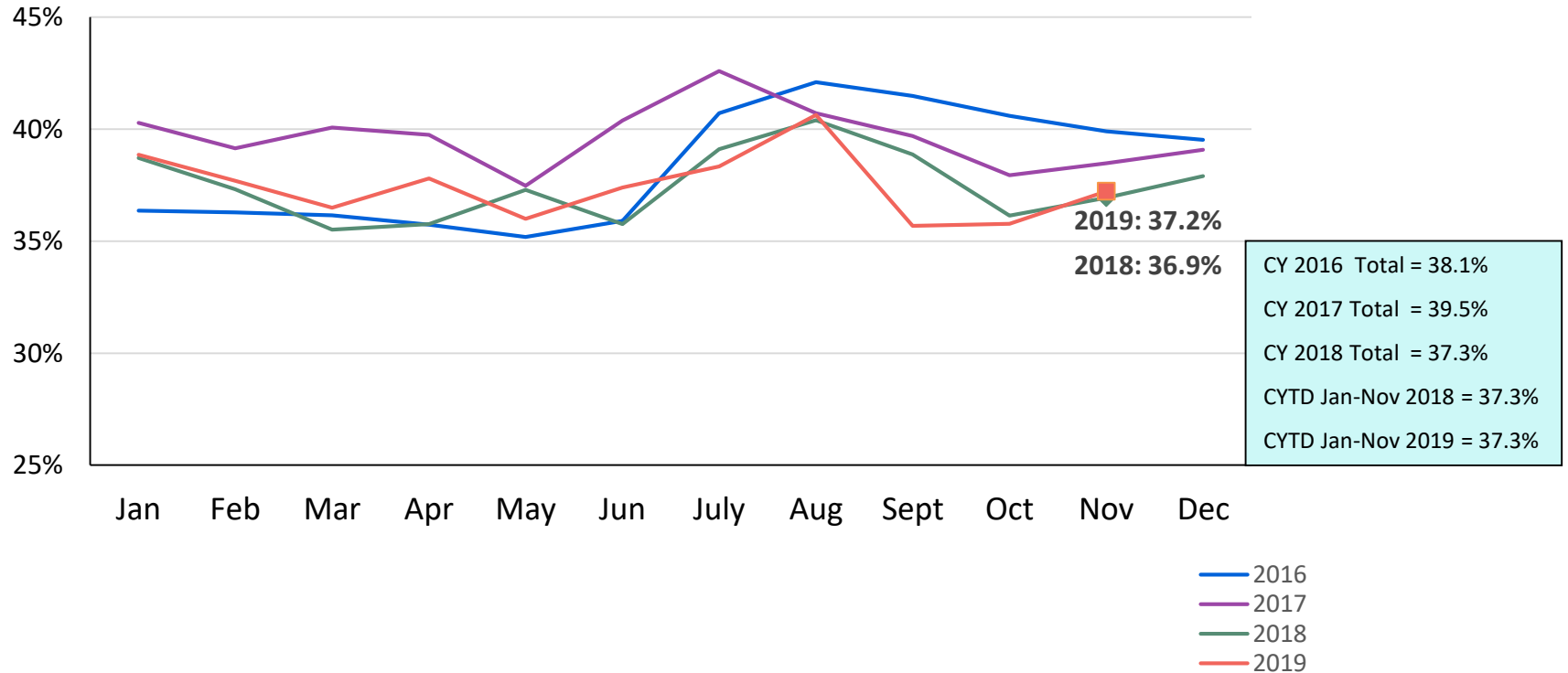
Consolidated Investigations and FAR* Cases January 2019 – January 2020



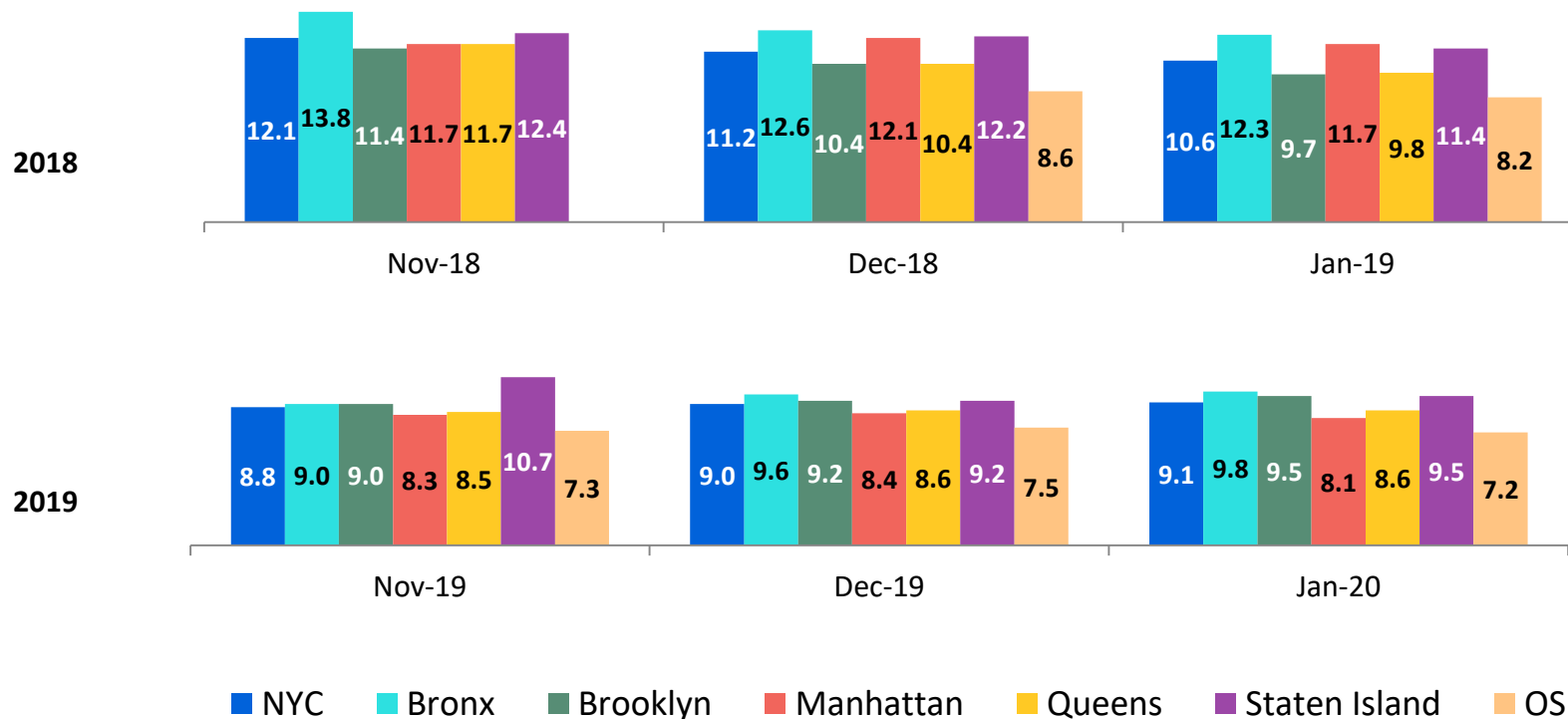
	Jan 2019	Feb 2019	Mar 2019	Apr 2019	May 2019	Jun 2019	Jul 2019	Aug 2019	Sep 2019	Oct 2019	Nov 2019	Dec 2019	Jan 2020
Number of Investigations & FAR cases	5,559	4,578	5,559	5,226	5,684	4,339	3,630	3,321	4,293	5,292	4,958	4,700	5,496

*FAR (Family Assessment Response) is an alternative Child Protective response to some reports of child maltreatment. FAR does not require an investigation and determination of allegations and individual culpability for families reported to the SCR. It is an alternative approach to providing protection to children by engaging families in an assessment of child safety and of family needs, in finding solutions to family problems and in identifying informal and formal supports to meet their needs and increase their ability to care for their children.

Percent of Investigations that Found Some Credible Evidence of Abuse or Neglect
January 2016 – November 2019

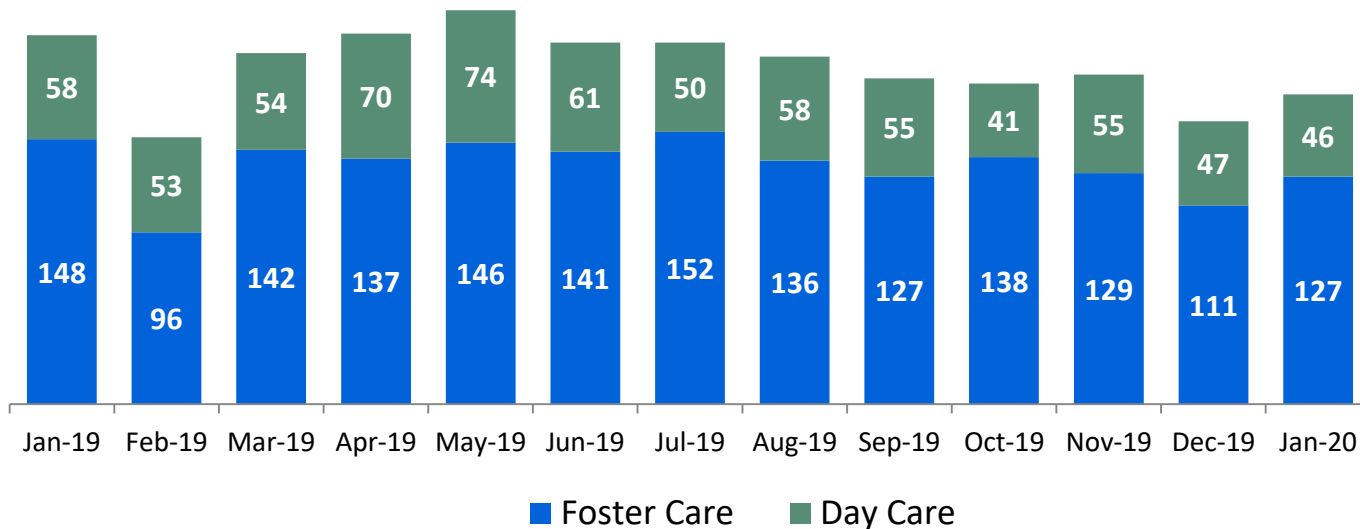


Average Child Protection Caseload*
November 2018 – January 2019 and November 2019 – January 2020



*Prior to December 2018 caseloads are of Protective/Diagnostic Unit (Child Protection, School Based, Sex Abuse and Hospital Units) caseworkers only. Beginning December 2018, all caseload carrying Child Protection Specialists (CPS) in investigative and Family Assessment Response Units are included. Includes CPS in Primary and Case Manager roles only.

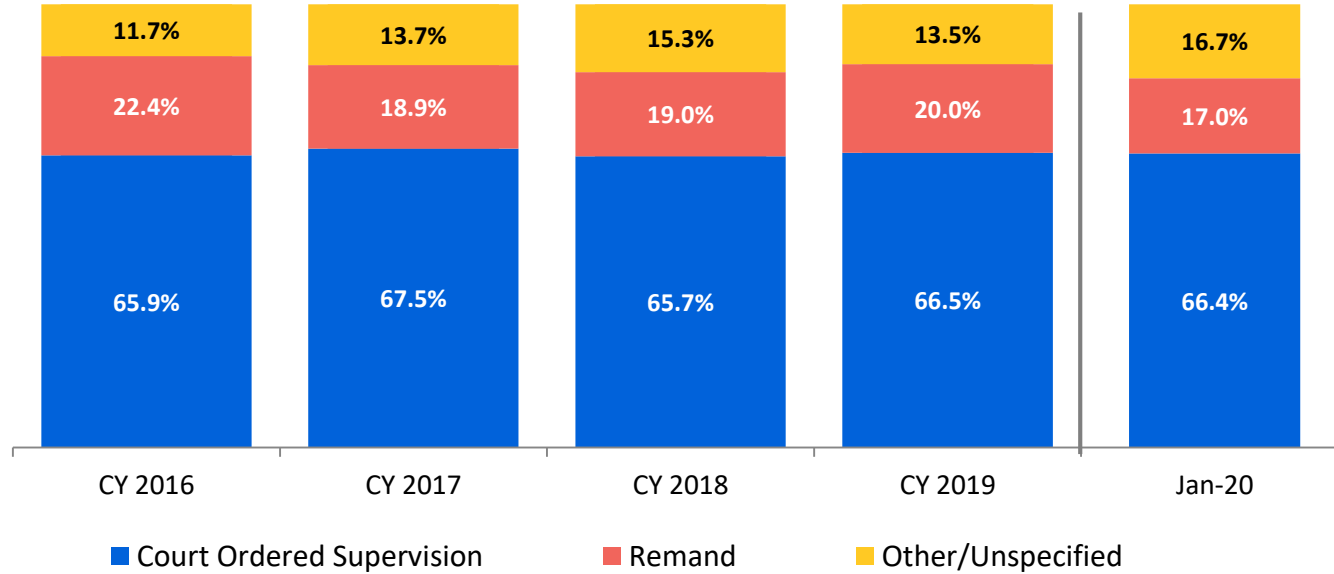
OSI Foster Care and Day Care* Investigations January 2019 – January 2020



	Jan 2019	Feb 2019	Mar 2019	Apr 2019	May 2019	Jun 2019	Jul 2019	Aug 2019	Sep 2019	Oct 2019	Nov 2019	Dec 2019	Jan 2020
Number of Investigations	206	149	196	207	220	202	202	194	182	179	184	158	173

*Day Care investigations include alleged abuse or maltreatment of children perpetrated by someone who cares for children in a setting that is not the child’s familial home and that requires state or local government approval and is subject to state laws, regulations, and oversight. This includes, but is not limited to, ACS/DOE Early Care and Education programs.

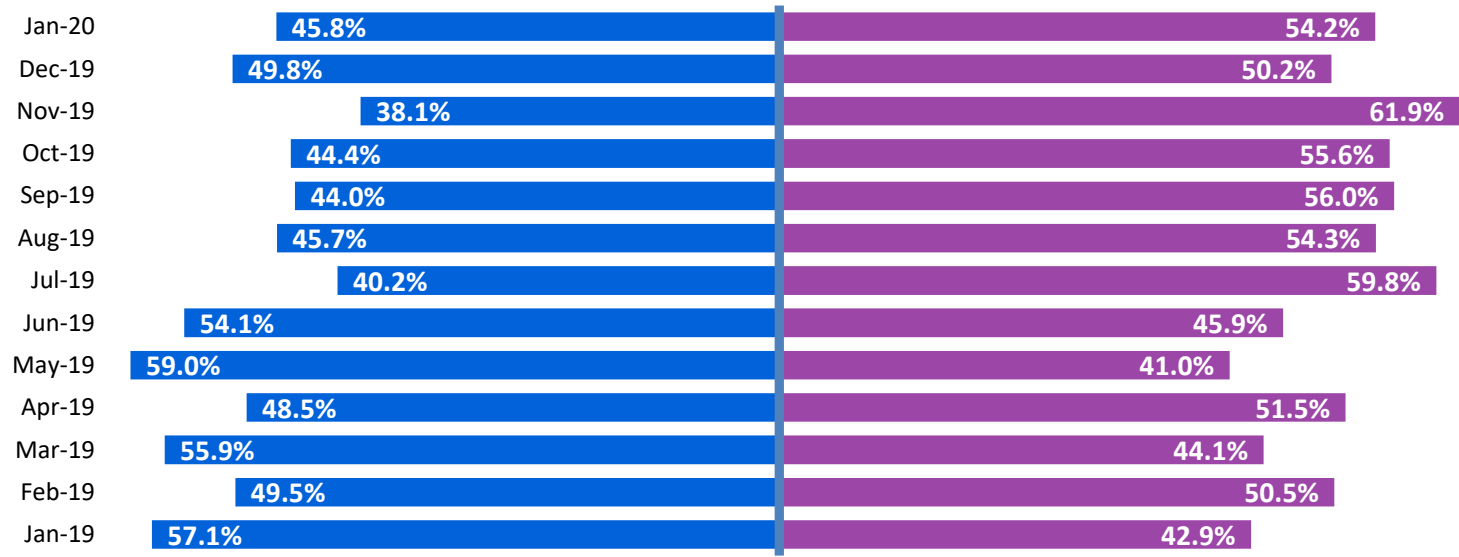
Article 10 Filings and Initial Hearing Outcomes, Children
CY 2016 – January 2020



	CY 2016	CY 2017	CY 2018	CY 2019	Jan 2020
Children with Article 10 Filings	10,973	15,975	13,319	12,332	1,044

Note: The category “Other/Unspecified” includes released with no supervision, no order issued and no outcome specified.

Remands Approved at Initial Article 10 Hearing by Removal Status January 2019 – January 2020

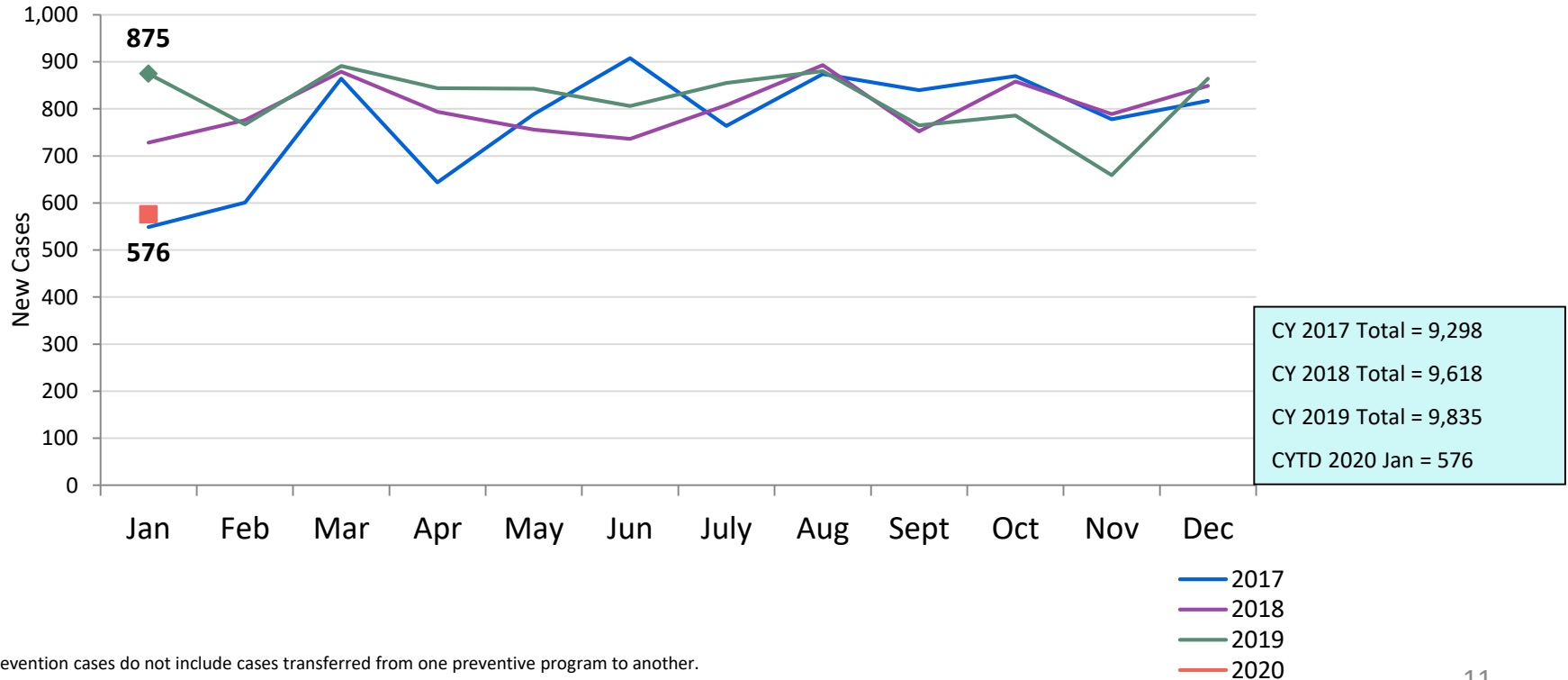


■ Pre-Filing Emergency Removals (court approved at initial hearing)

■ Post-Filing Removals (court ordered at initial hearing)

	Jan 2019	Feb 2019	Mar 2019	Apr 2019	May 2019	Jun 2019	Jul 2019	Aug 2019	Sep 2019	Oct 2019	Nov 2019	Dec 2019	Jan 2020
Children Remanded	184	194	211	260	244	205	204	186	168	243	168	201	177

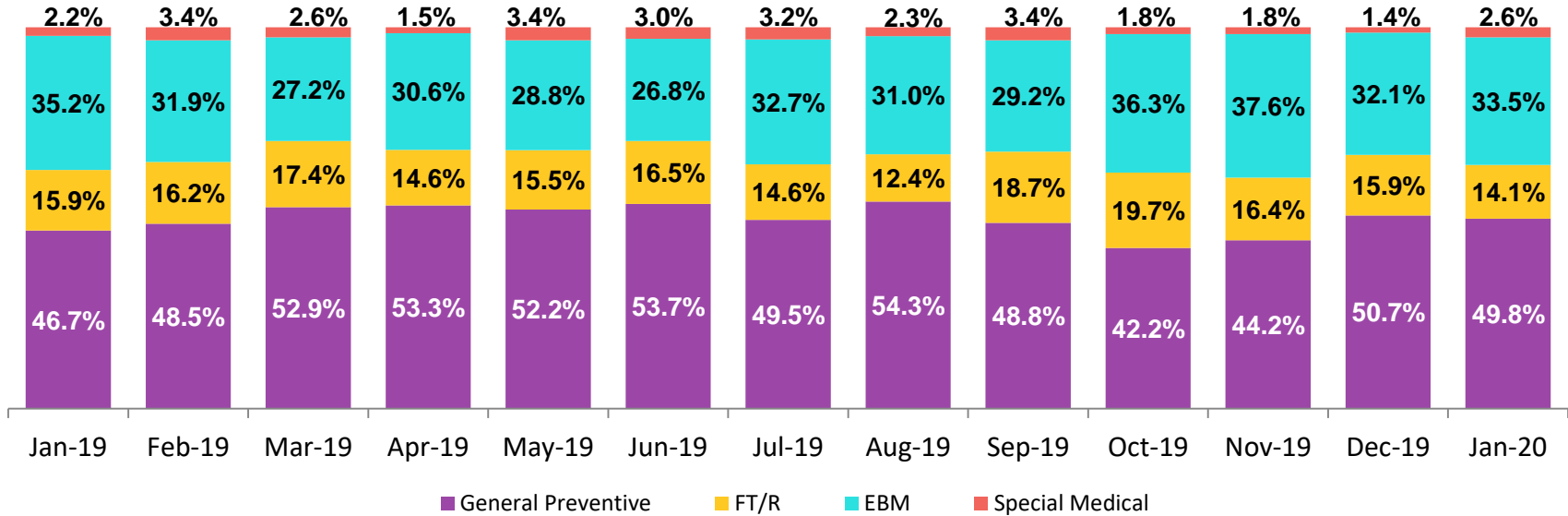
New Child Welfare Prevention Cases
January 2017 – January 2020



*New prevention cases do not include cases transferred from one preventive program to another.

See Pages 31 and 32 of the Appendix for supporting data.

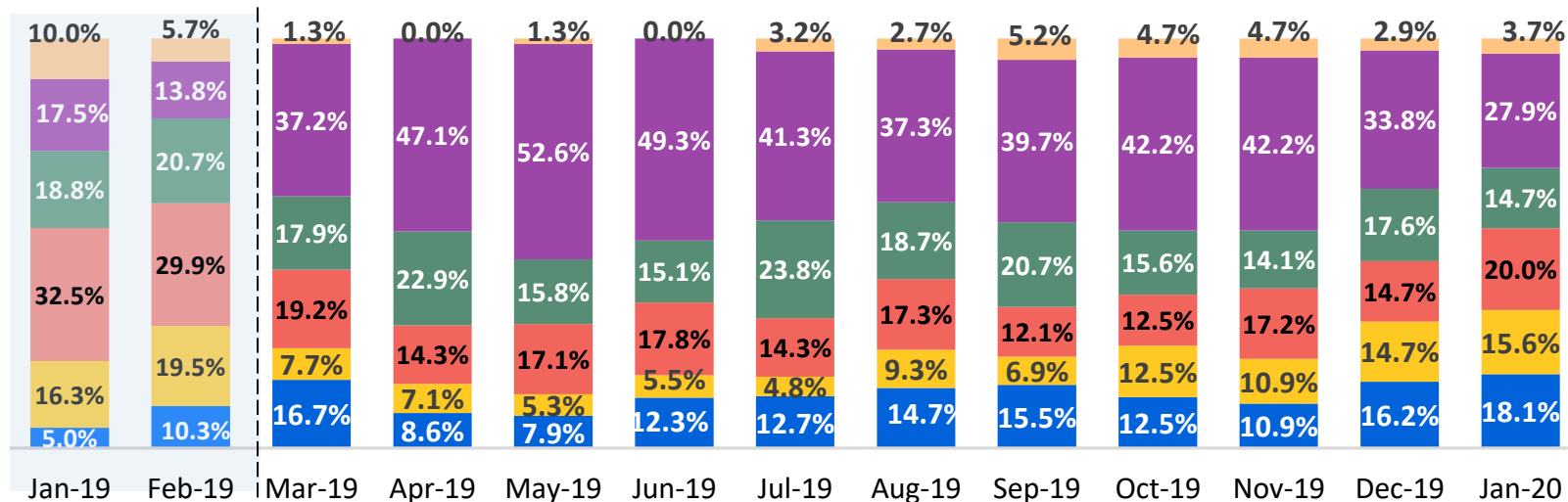
New Child Welfare Prevention Cases by Program Type*
January 2019 – January 2020



	Jan 2019	Feb 2019	Mar 2019	Apr 2019	May 2019	Jun 2019	Jul 2019	Aug 2019	Sep 2019	Oct 2019	Nov 2019	Dec 2019	Jan 2020
Number of New Preventive Cases	875	767	891	844	843	806	855	880	765	786	659	864	576

* New prevention cases do not include cases transferred from one prevention program to another.

Average Daily Children's Center Population January 2019 – January 2020



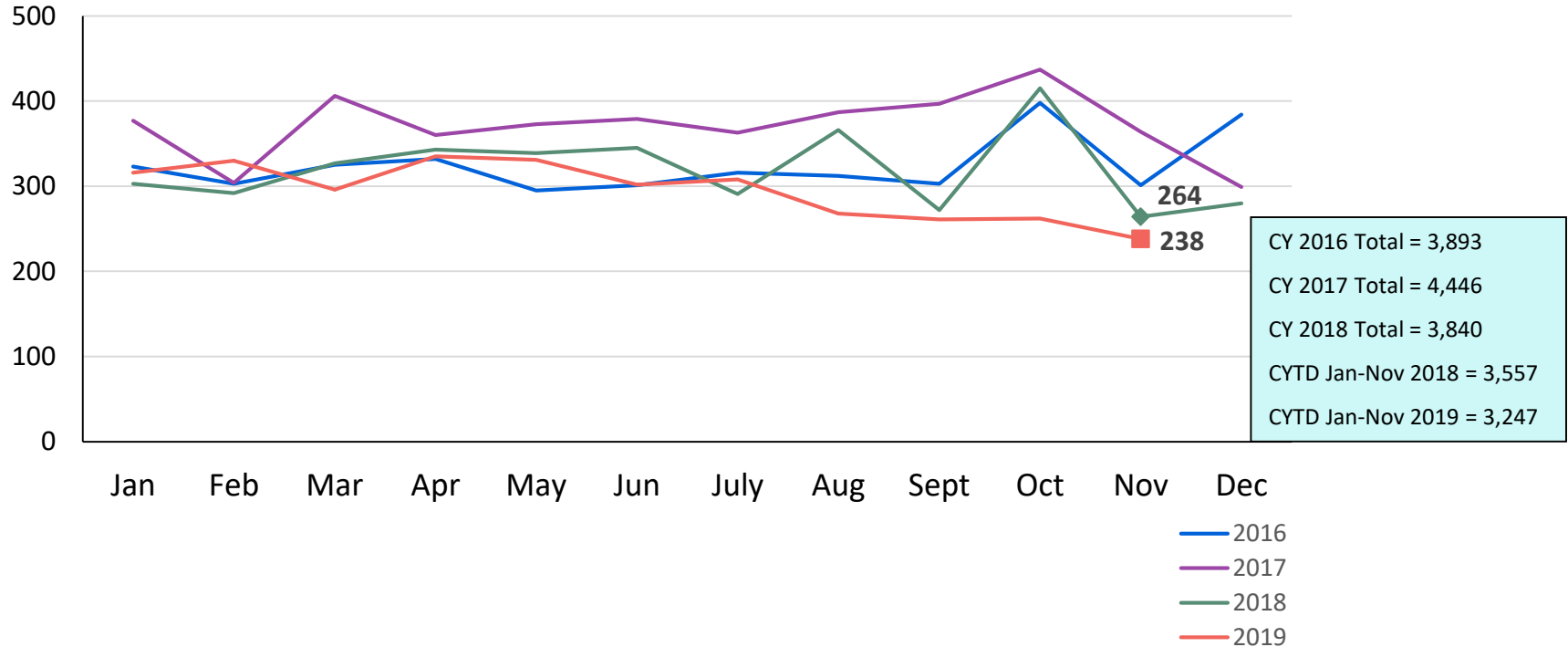
Through Feb-19: ■ Newborn - 1 year old ■ 2-6 years old ■ 7-12 years old ■ 13-15 years old ■ 16-17 years old ■ 18+ years old

Mar-19 - present: ■ Newborn - 3 years old ■ 4-6 years old ■ 7-10 years old ■ 11-13 years old ■ 14-18 years old ■ 19+ years old

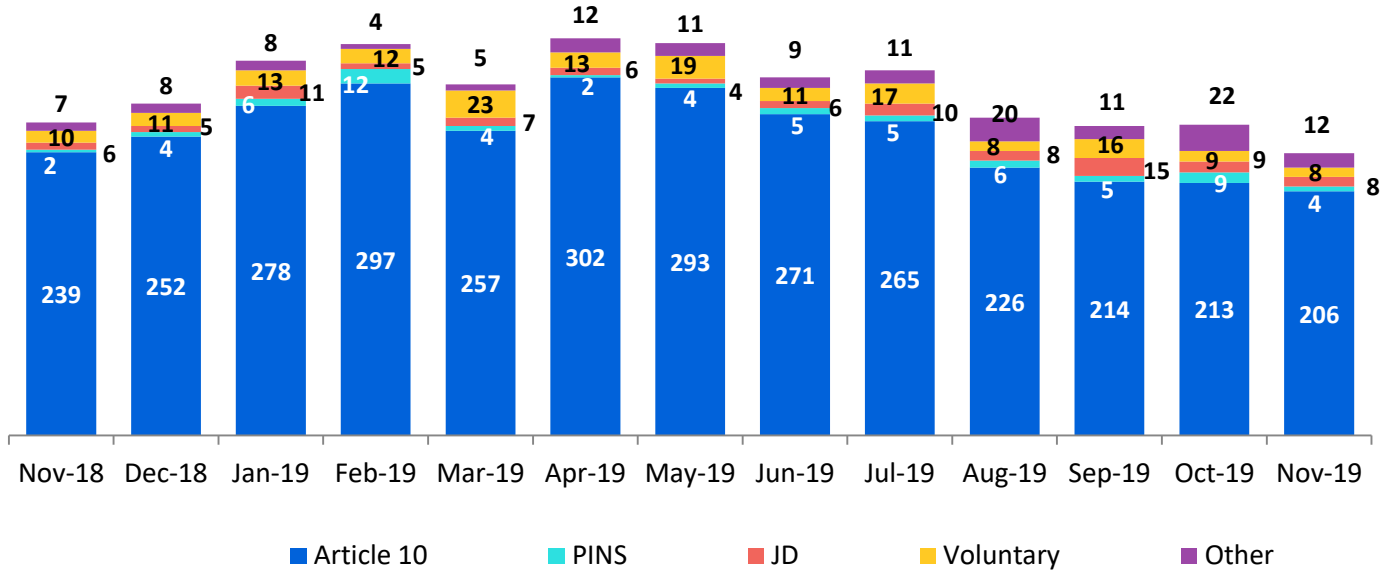
	Jan 2019*	Feb 2019*	Mar 2019	Apr 2019	May 2019	Jun 2019	Jul 2019	Aug 2019	Sep 2019	Oct 2019	Nov 2019	Dec 2019	Jan 2020
Average Number of Children	80	87	78	70	76	73	63	75	58	64	64	68	69

* Different age groups were used from September 2018 to February 2019.

New Placements of Children into Foster Care
January 2016 – November 2019



Reason for New Placements of Children into Foster Care
November 2018 – November 2019

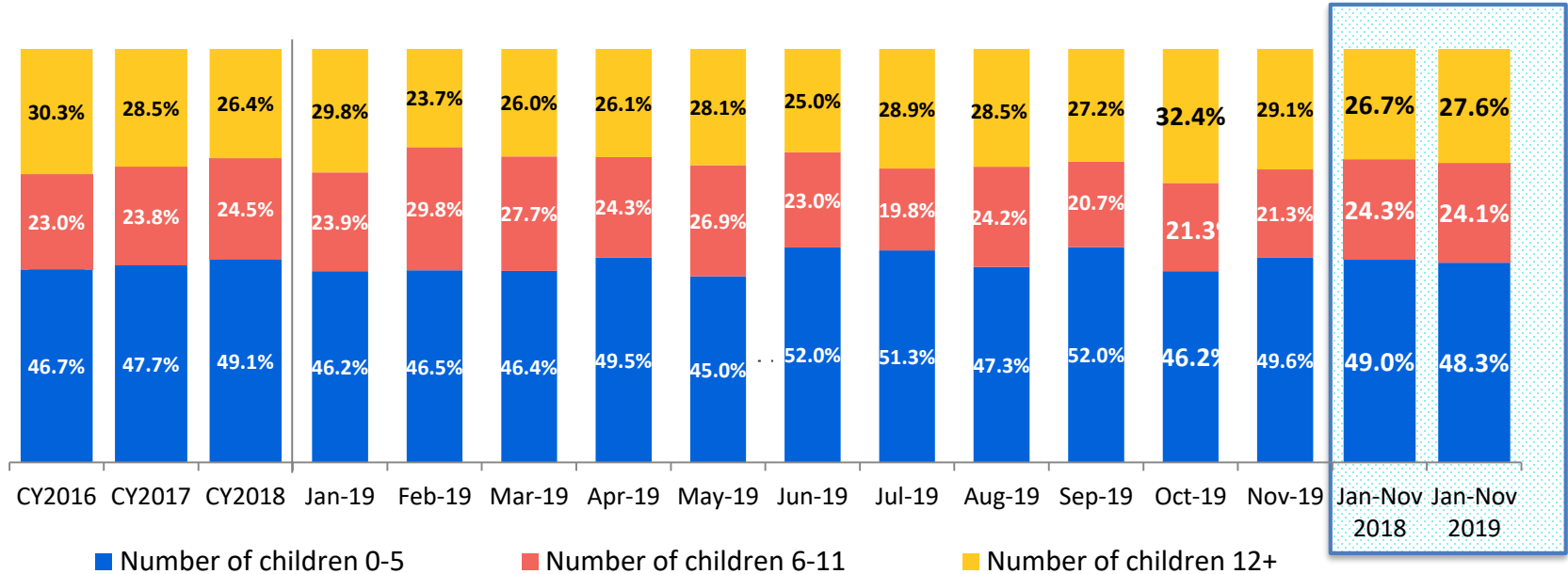


Calendar-Year-to-Date

Jan-Nov 2018	Jan-Nov 2019
91	125
141	149
89	89
70	62
3,166	2,822

	Nov 2018	Dec 2018	Jan 2019	Feb 2019	Mar 2019	Apr 2019	May 2019	Jun 2019	Jul 2019	Aug 2019	Sep 2019	Oct 2019	Nov 2019	CYTD Jan-Nov 2018	CYTD Jan-Nov 2019
Number of Placements	264	280	316	330	296	335	331	302	308	268	261	262	238	3,557	3,247

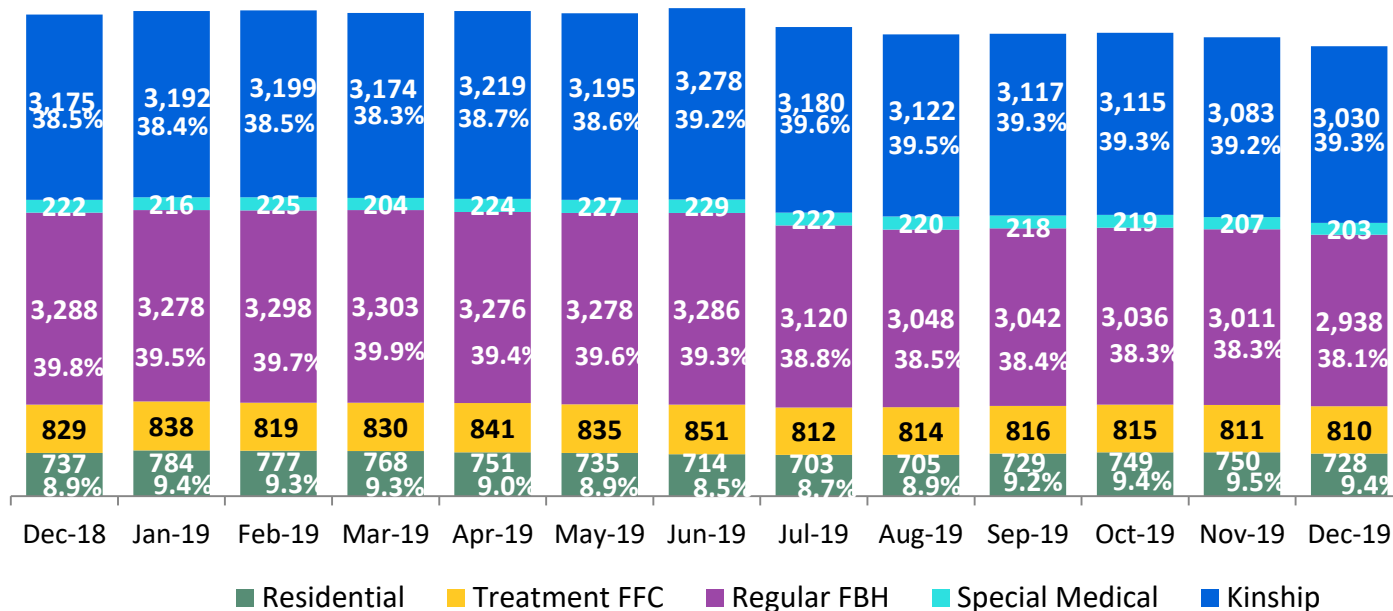
New Placements of Children into Foster Care* by Age
CY 2016 – November 2019



	CY 2016	CY 2017	CY 2018	Jan 2019	Feb 2019	Mar 2019	Apr 2019	May 2019	Jun 2019	Jul 2019	Aug 2019	Sep 2019	Oct 2019	Nov 2019	CYTD Jan-Nov 2018	CYTD Jan-Nov 2019
Number of Placements	3,680	4,285	3,743	305	325	289	329	327	296	298	260	246	253	230	3,468	3,158

*Excludes CTH placements.

Children in Foster Care *
December 2018 – December 2019 (end of month)



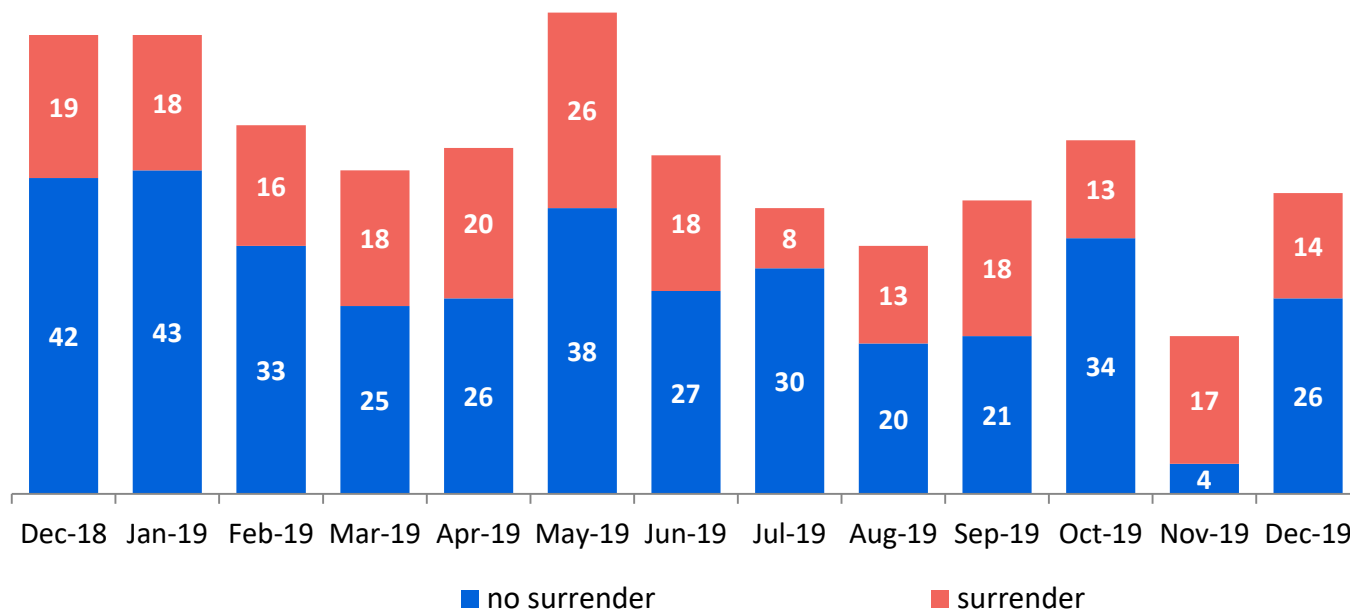
Calendar-Year-to-Date
(Average)

Jan-Dec 2018	Jan-Dec 2019
3,047	3,159
236	218
3,582	3,160
843	824
781	741

	Dec 2018	Jan 2019	Feb 2019	Mar 2019	Apr 2019	May 2019	Jun 2019	Jul 2019	Aug 2019	Sep 2019	Oct 2019	Nov 2019	Dec 2019	CYTD Jan-Dec 2018	CYTD Jan-Dec 2019
Number in Foster Care	8,251	8,308	8,317	8,279	8,310	8,270	8,358	8,037	7,909	7,922	7,934	7,862	7,709	8,503	8,101

*Excludes CTH placements and includes children in 24 hour care and approximately 200 young children who are living in foster homes or residential care facilities with their mothers who are in foster care (8D children).

Children Freed for Adoption, Surrender by at Least One Parent
December 2018 – December 2019

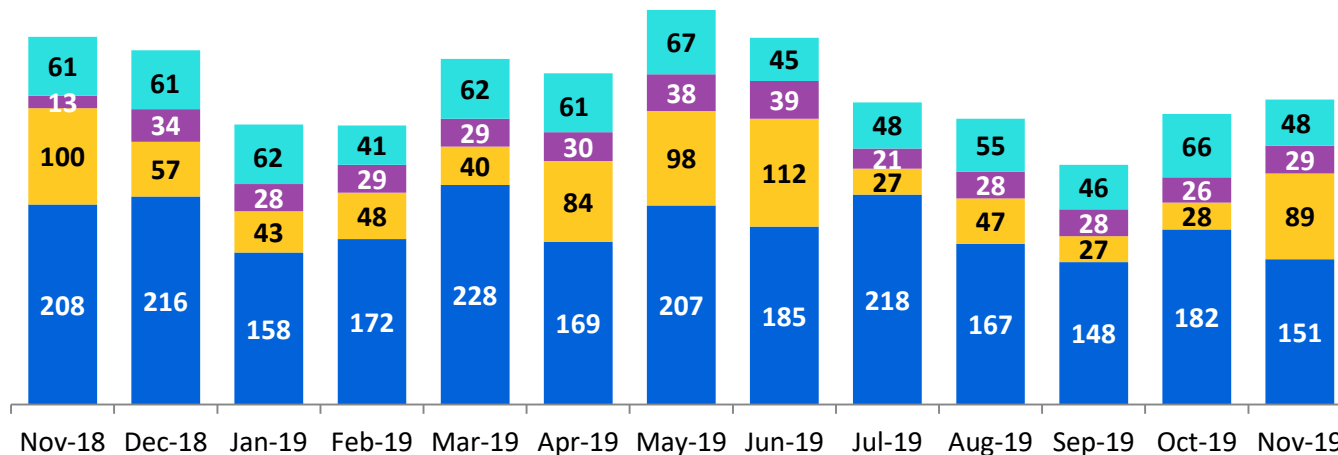


Calendar-Year-to-Date

Jan-Dec 2018	Jan-Dec 2019
291	199
461	327

	Dec 2018	Jan 2019	Feb 2019	Mar 2019	Apr 2019	May 2019	Jun 2019	Jul 2019	Aug 2019	Sep 2019	Oct 2019	Nov 2019	Dec 2019	CYTD Jan-Dec 2018	CYTD Jan-Dec 2019
Number Freed for Adoption	61	61	49	43	46	64	45	38	33	39	47	21	40	752	526

Permanency and Non-Permanency* Discharges from Foster Care**
November 2018 – November 2019



Calendar-Year-to-Date

Jan-Nov 2018	Jan-Nov 2019
628	601
278	325
753	643
2,293	1,985

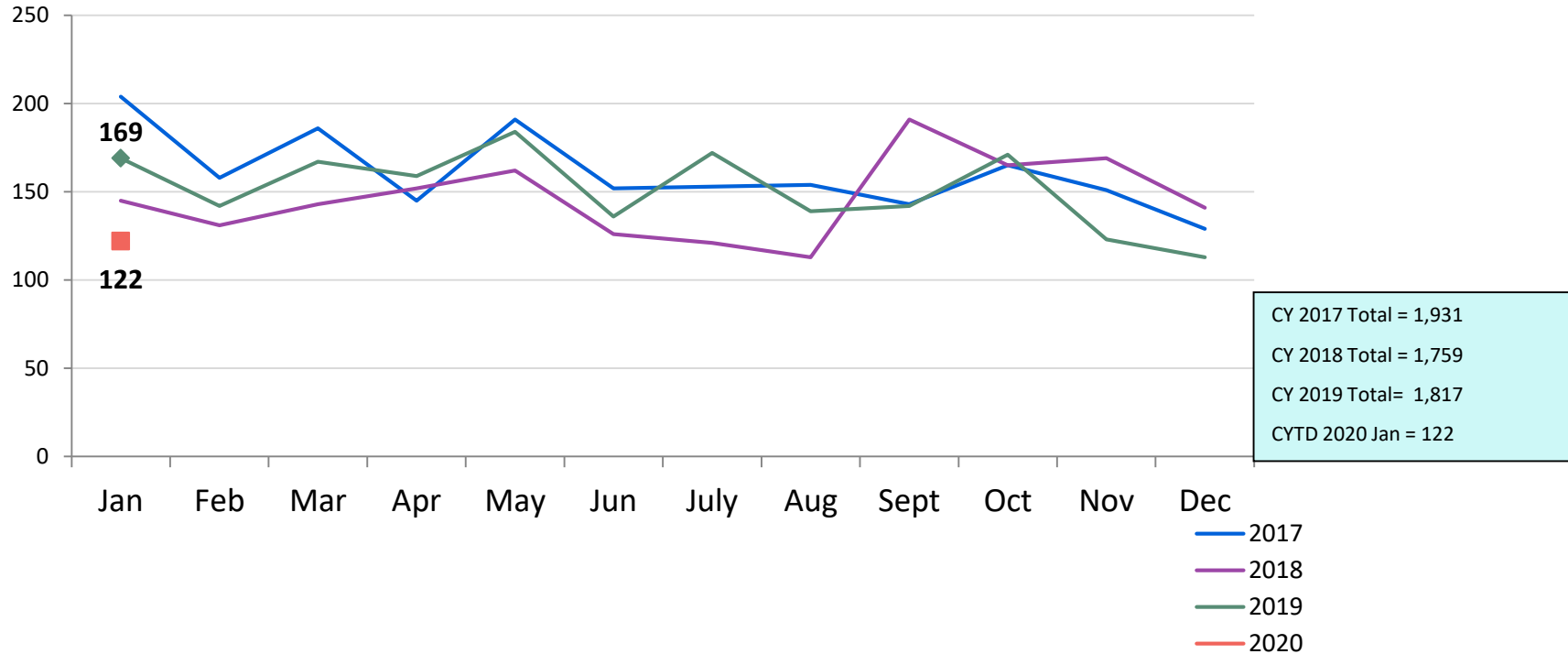
■ Reunifications ■ Adoptions ■ KinGAP ■ Non-Permanency Discharges

	Nov 2018	Dec 2018	Jan 2019	Feb 2019	Mar 2019	Apr 2019	May 2019	Jun 2019	Jul 2019	Aug 2019	Sep 2019	Oct 2019	Nov 2019	CYTD Jan-Nov 2018	CYTD Jan-Nov 2019
Number of Discharges	382	368	291	290	359	344	410	381	314	297	249	302	317	3,952	3,554

*Non-permanency discharges include AWOL, APPLA (youth 18-20 years old discharged to self and youth who reached 21 while in care), and other discharge destinations such as psychiatric institutions and correctional facilities and discharges with unspecified destinations.

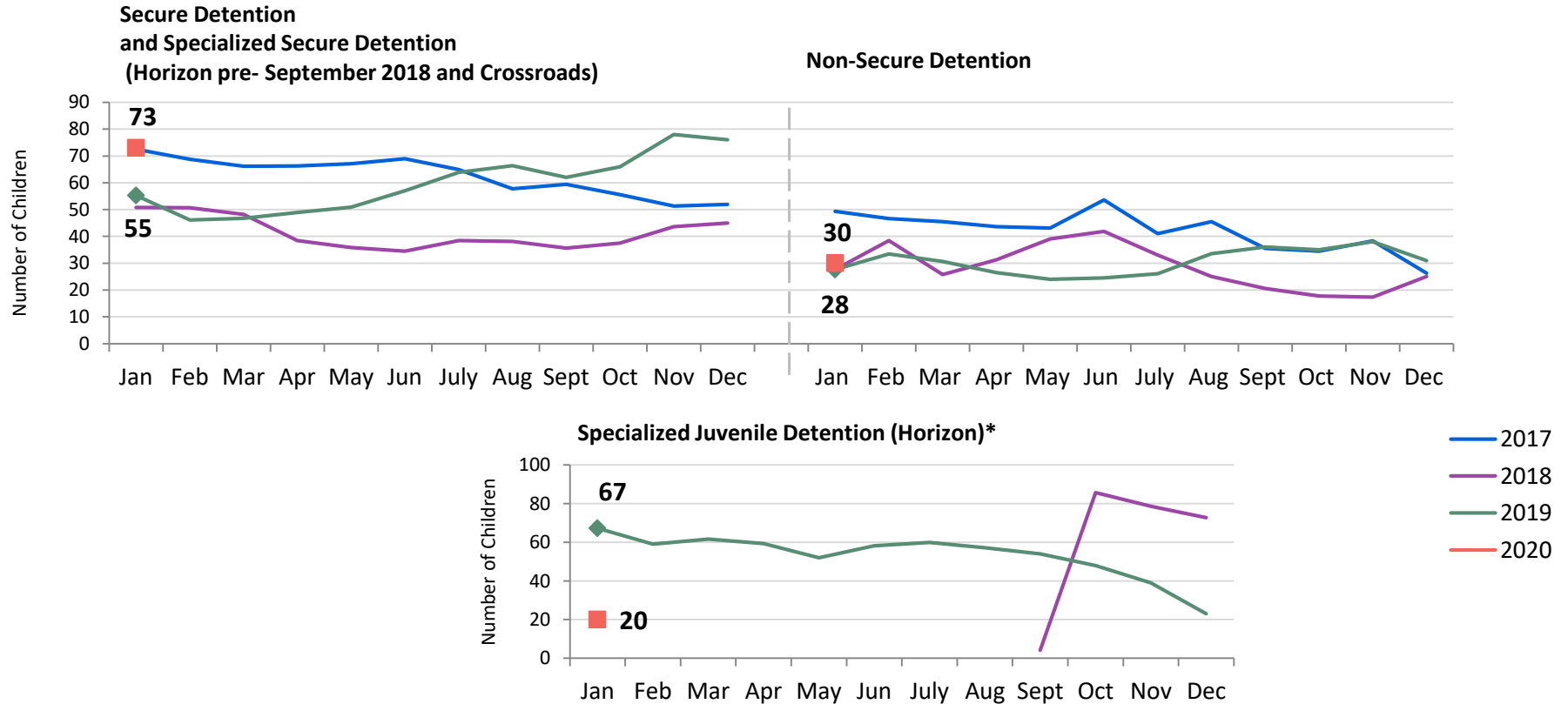
**Excludes discharges of youth from CTH placements.

Total Monthly Admissions to Detention
January 2017 – January 2020*



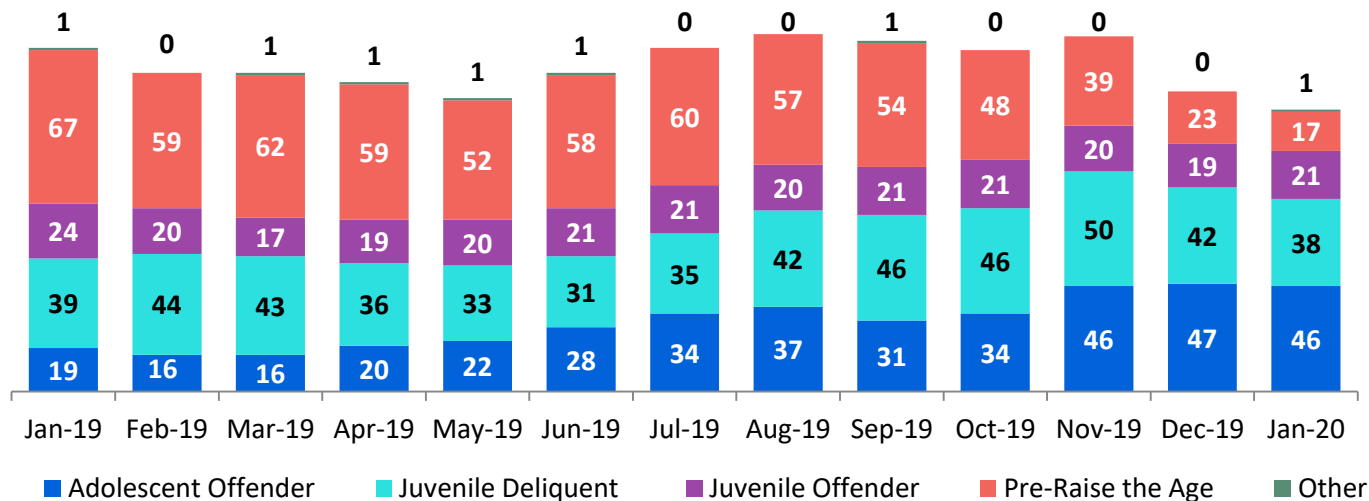
*Beginning in September 2018 detention admissions include admissions to the Horizon Juvenile Facility of 16 and 17 year olds moved off Rikers Island and pre-Raise the Age 17 year olds.

Detention Monthly Average Daily Population January 2017 – January 2020*



*Beginning in September 2018 the Horizon Juvenile Facility is housing 16 and 17 year olds moved off Rikers Island and pre-Raise the Age 17 year olds.

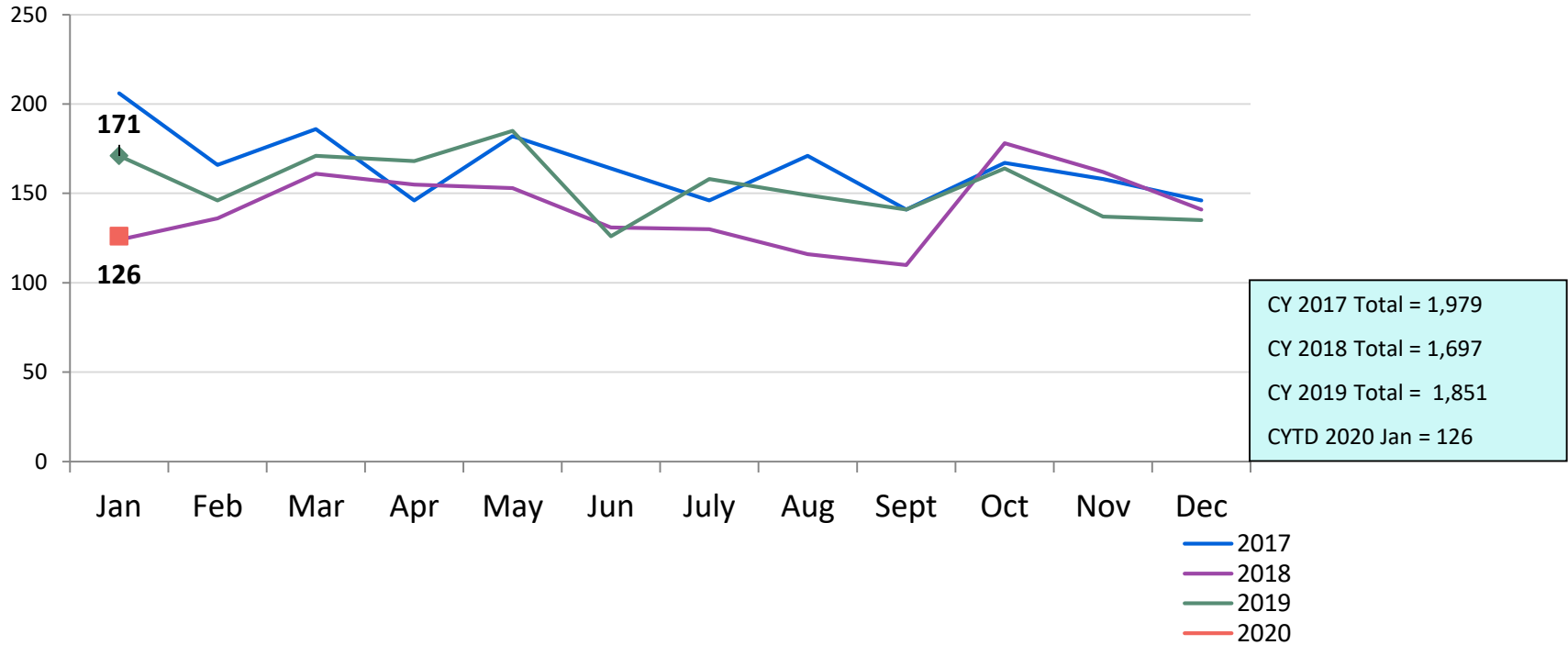
Detention Total Monthly Average Daily Population by Case Type* January 2019 – January 2020



Total Average Daily Population													
Jan 2019	Feb 2019	Mar 2019	Apr 2019	May 2019	Jun 2019	Jul 2019	Aug 2019	Sep 2019	Oct 2019	Nov 2019	Dec 2019	Jan 2020	
150	139	139	135	127	140	150	157	152	149	155	131	123	

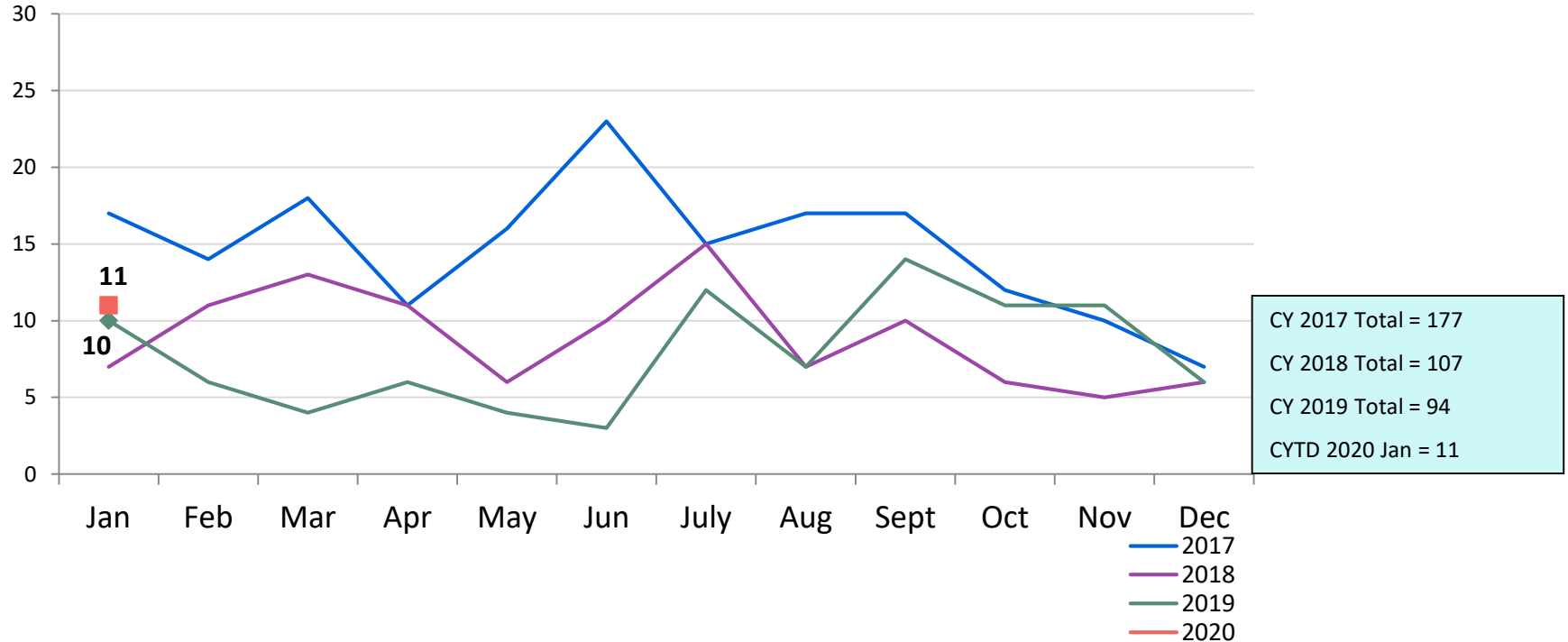
*Case Type definitions: Adolescent Offender (AO) is a person 16 years of age charged with a felony on or after 10/1/18 and a person 17 years of age charged with a felony on or after 10/1/19; Juvenile Delinquent (JD) is a person 7-15 years of age who has committed an act which would be considered a crime if the person were old enough and capable of being treated as an adult. Sixteen year olds charged with a misdemeanor (except those charged under NYS Vehicle and Traffic Law) on or after 10/1/18 and 17 year olds charged on or after 10/1/19 are also JDs.; Juvenile Offender (JO) a person 13-15 years of age with a serious violent felony charge; Pre-Raise the Age is a person who was 16 or 17 years old when transferred off Rikers Island 10/1/18 and 17 year olds charged with crimes 10/1/18- 9/30/19; and Other case type includes youth detained for other authorities and ACS warrants.

Total Monthly Releases from Detention
January 2017 – January 2020*

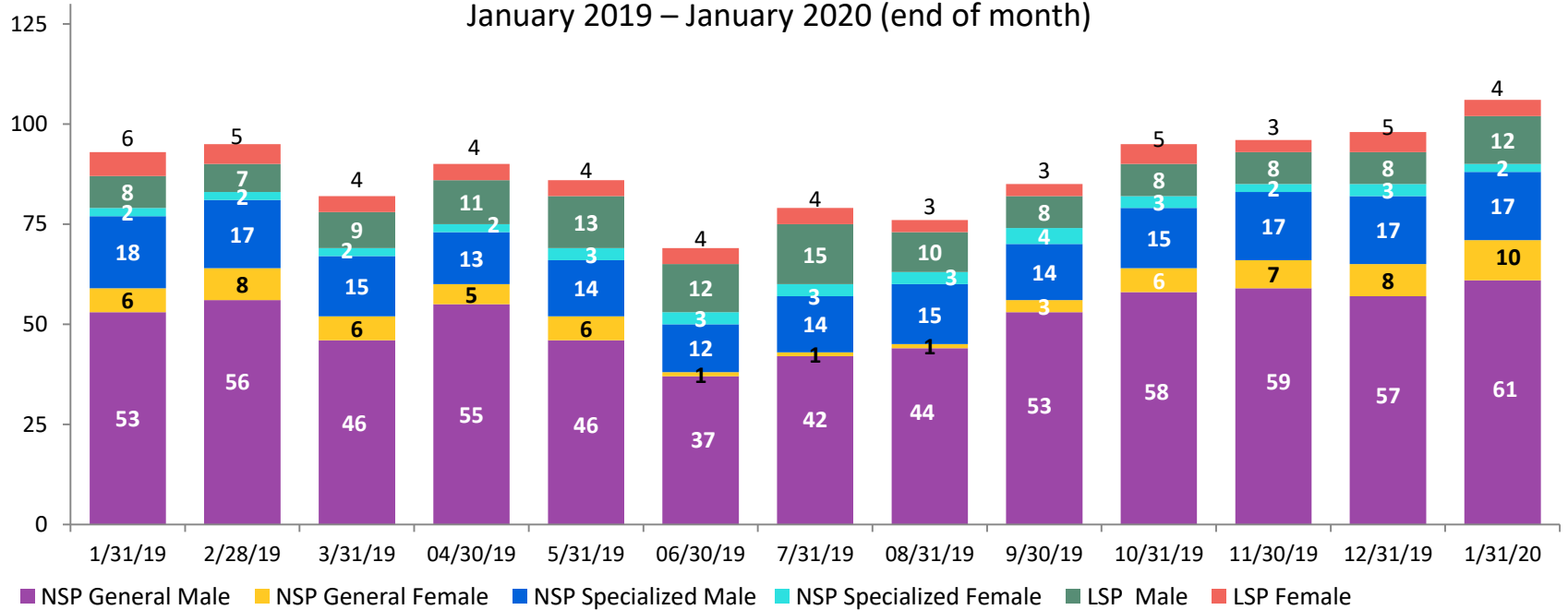


*Beginning in October 2018 detention releases include releases from the Horizon Juvenile Facility of 16 and 17 year olds moved off Rikers Island and pre-Raise the Age 17 year olds.

Close to Home Admissions*
January 2017 – January 2020

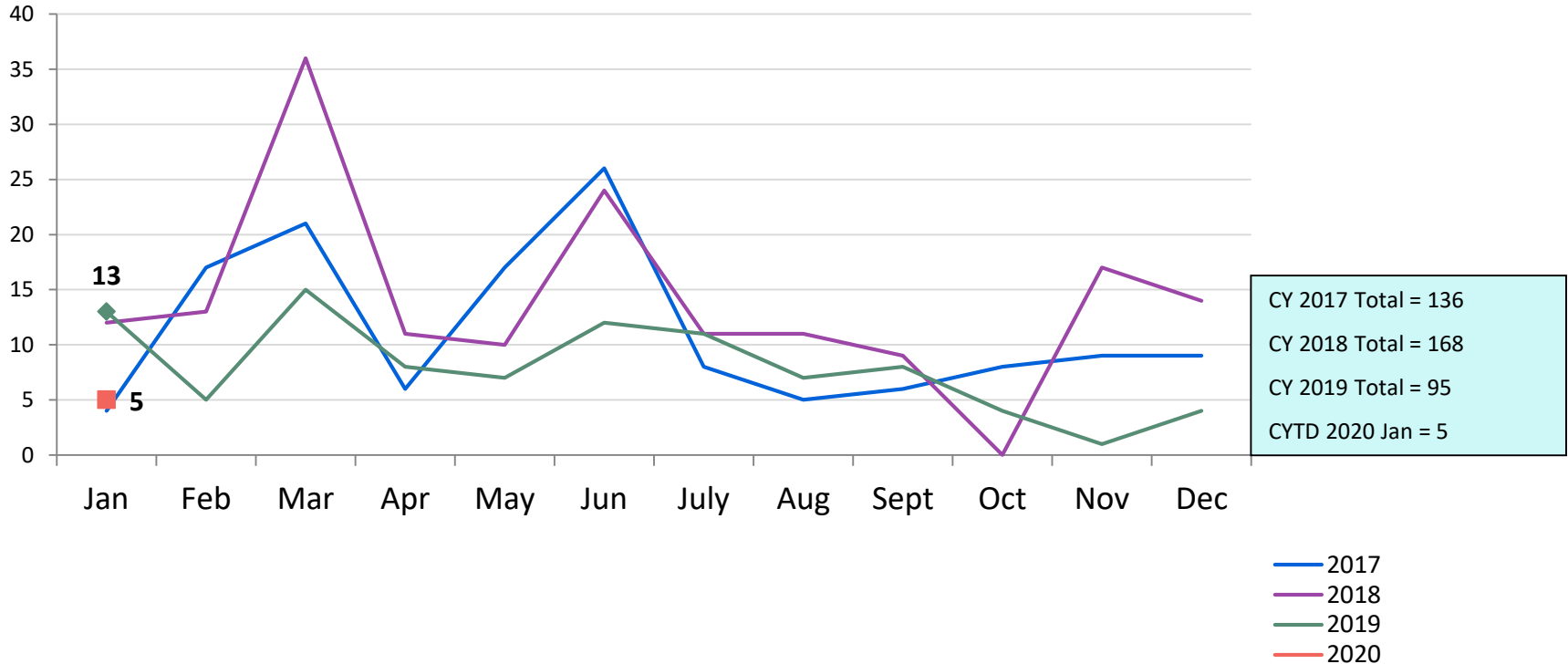


CTH Placement, in 24-hour Care
January 2019 – January 2020 (end of month)

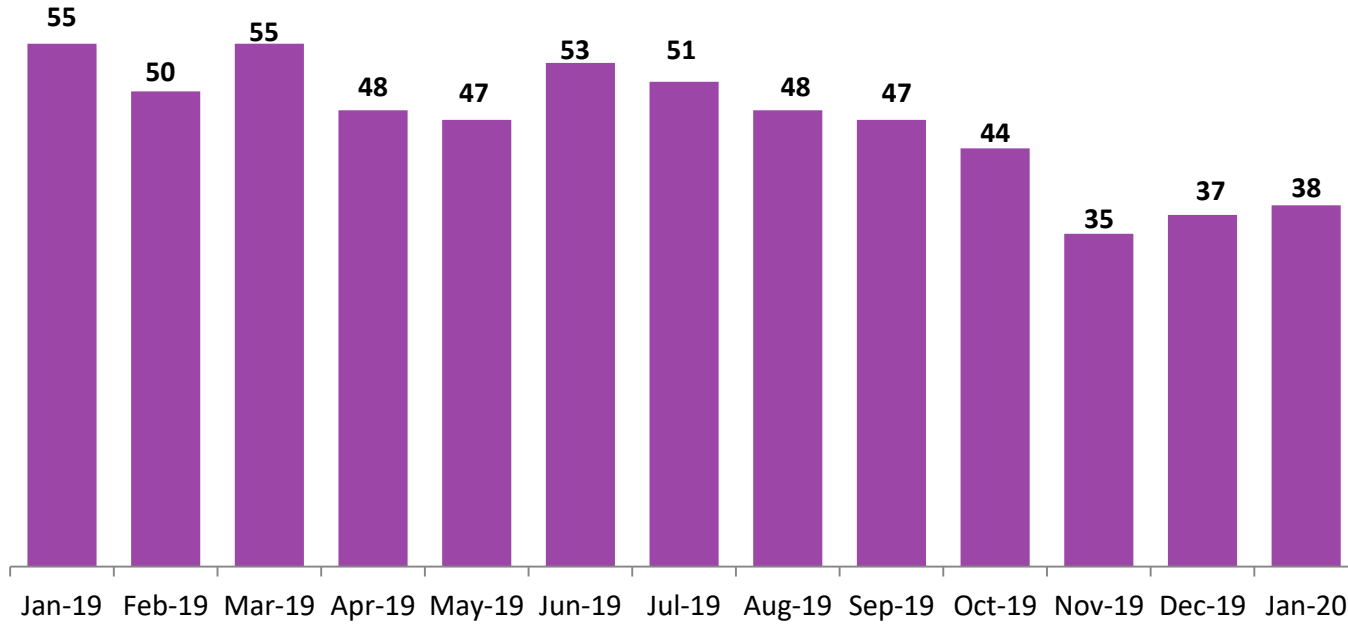


Number in Placement													
	1/31/19	2/28/19	3/31/19	4/30/19	5/31/19	6/30/19	7/31/19	8/31/19	9/30/19	10/31/19	11/30/19	12/31/19	1/31/20
NSP	79	83	69	75	69	53	60	63	74	82	85	85	90
LSP	14	12	13	15	17	16	19	13	11	13	11	13	16

Releases from Close to Home Placement to Aftercare
January 2017 – January 2020

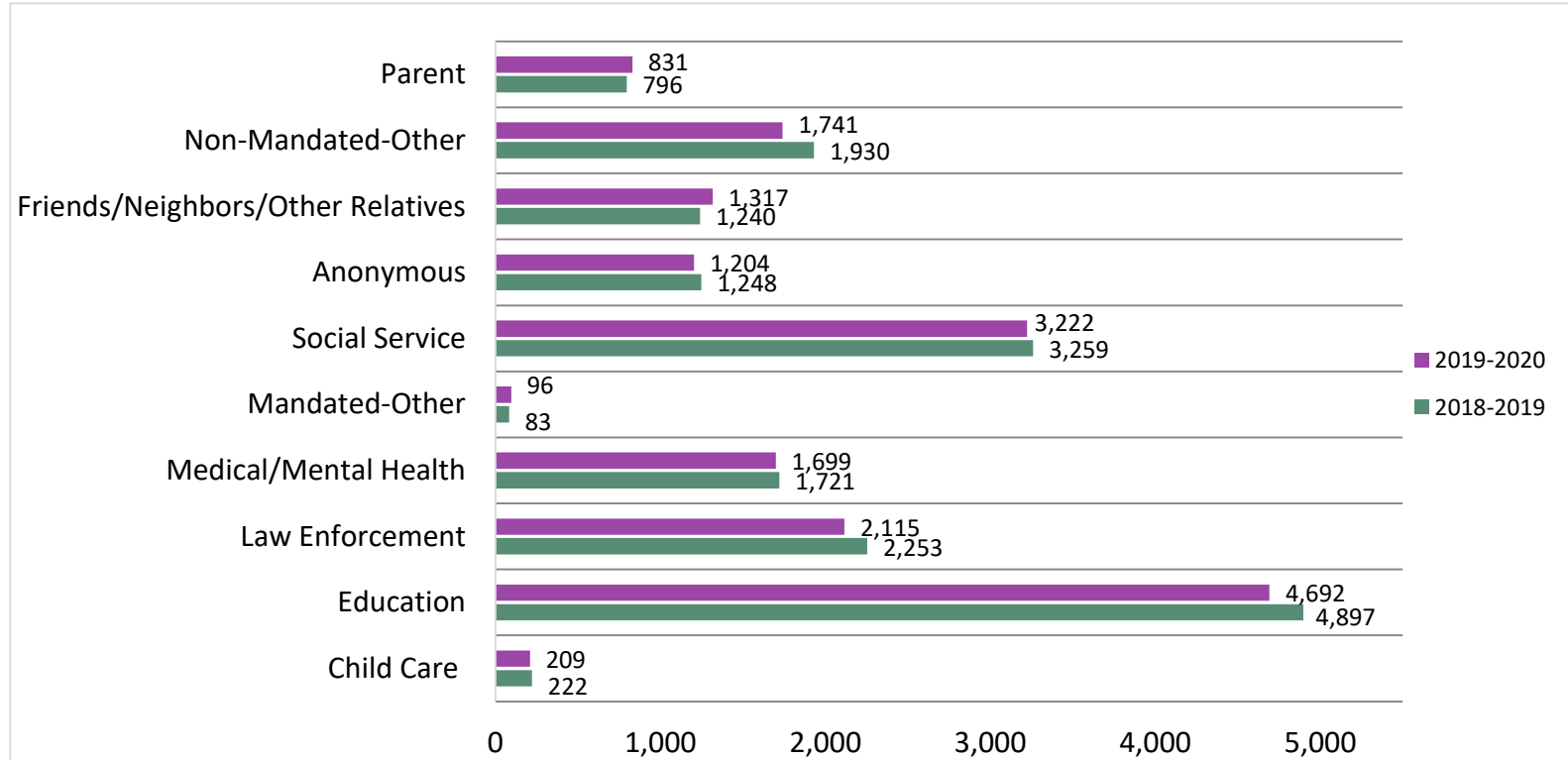


CTH Aftercare Census
January 2019 – January 2020

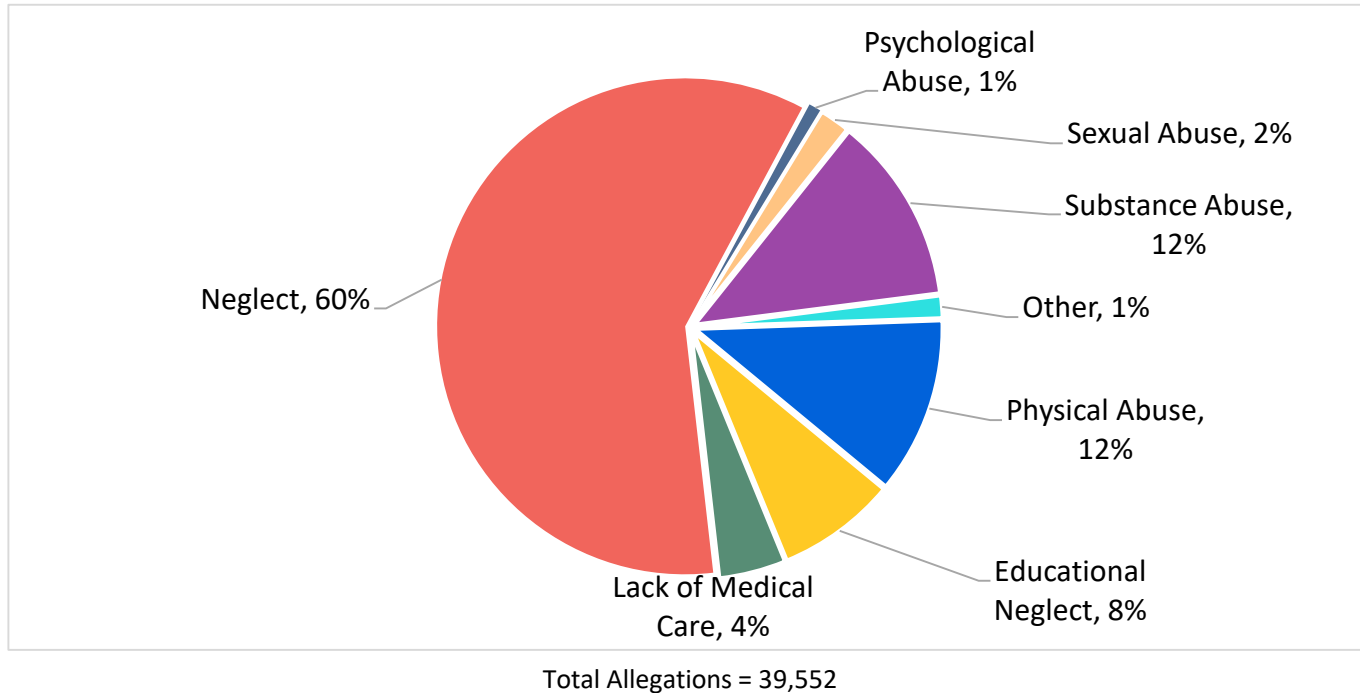


Appendix

Figure 1: SCR Intakes by Reporter Group, November 2018 – January 2019 and November 2019 – January 2020



**Figure 2: SCR Allegations
November 2019 – January 2020**



Allegations are grouped as follows: Physical Abuse - burn, fatality, fracture, choking, twisting, shaking, excessive corporal punishment, internal injuries, lacerations, bruises, welts, poisoning, noxious substances; Educational Neglect – educational neglect; Lack of Medical Care – lack of medical care; Neglect - inadequate guardianship, inadequate food, clothing, shelter, lack of supervision, malnutrition, failure to thrive, swelling, dislocations, sprains; Psychological Abuse - isolation, emotional neglect; Sexual Abuse – sexual abuse; Substance Abuse - parental drug use, child drug use; and Other -abandonment, inappropriate custodial conduct.

**Figure 3: SCR Investigations by Borough
November 2018 – January 2019 and November 2019 – January 2020**

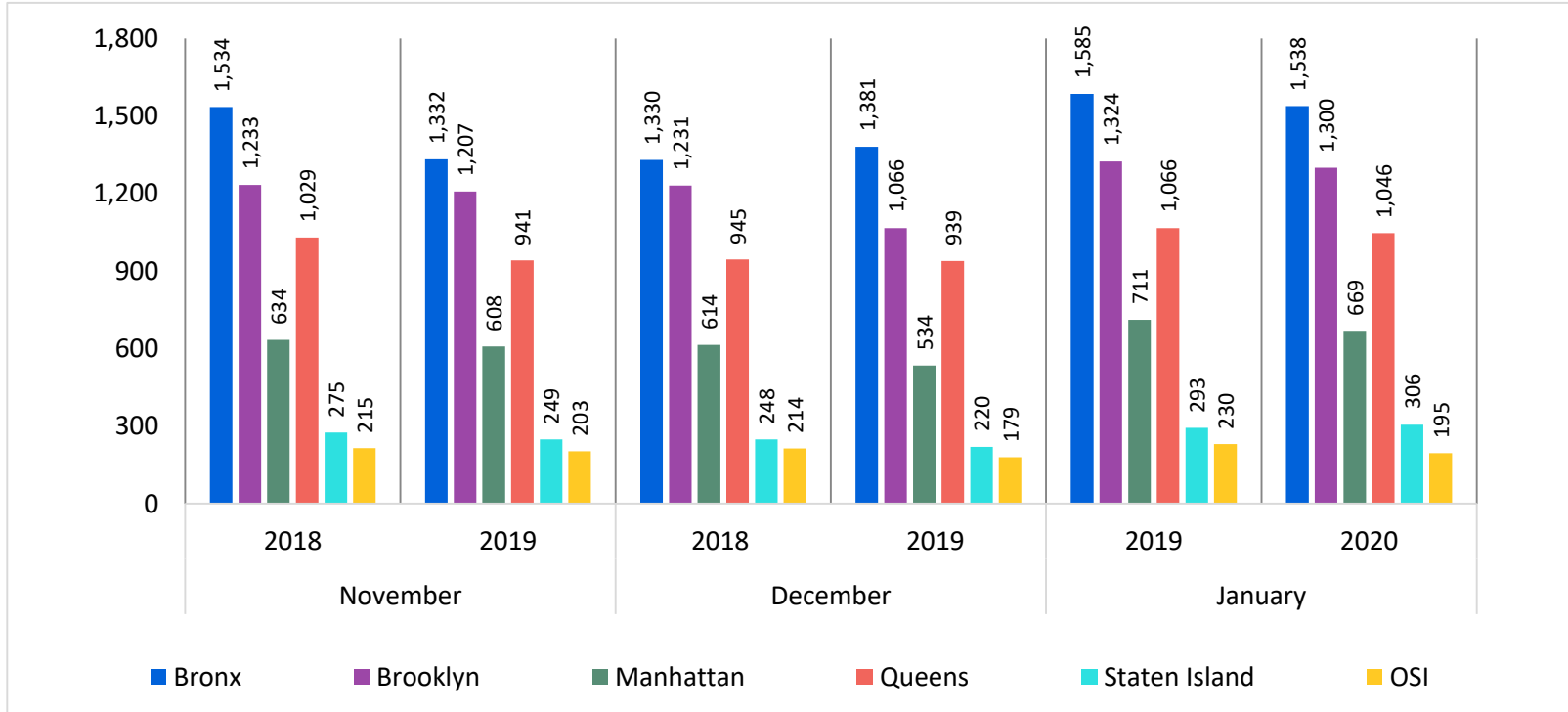


Table 1: SCR Investigations Changes by Borough
November 2018 – January 2019 and November 2019 – January 2020

Month	Year	Bronx	Brooklyn	Manhattan	Queens	Staten Island	OSI	Other	Total
November	2018	1534	1233	634	1029	275	215	160	5080
	2019	1332	1207	608	941	249	203	133	4673
	% Change	-13.2%	-2.1%	-4.1%	-8.6%	-9.5%	-5.6%	-16.9%	-8.0%
December	2018	1330	1231	614	945	248	214	161	4743
	2019	1381	1066	534	939	220	179	144	4463
	% Change	3.8%	-13.4%	-13.0%	-0.6%	-11.3%	-16.4%	-10.6%	-5.9%
January	2019	1585	1324	711	1066	293	230	171	5380
	2020	1538	1300	669	1046	306	195	123	5177
	% Change	-3.0%	-1.8%	-5.9%	-1.9%	4.4%	-15.2%	-28.1%	-3.8%
Total	Nov 2018 - Jan 2019	4449	3788	1959	3040	816	659	492	15203
	Nov 2019 - Jan 2020	4251	3573	1811	2926	775	577	400	14313
	% Change	-4.5%	-5.7%	-7.6%	-3.8%	-5.0%	-12.4%	-18.7%	-5.9%

Year	Month	New Cases	Closed Cases
2018	Jan-18	728	567
	Feb-18	776	783
	Mar-18	879	776
	Apr-18	794	613
	May-18	756	857
	Jun-18	736	837
	Jul-18	808	856
	Aug-18	893	954
	Sep-18	752	755
	Oct-18	858	767
	Nov-18	789	699
	Dec-18	849	717
2019	Jan-19	875	708
	Feb-19	767	726
	Mar-19	891	856
	Apr-19	844	802
	May-19	843	864
	Jun-19	806	841
	Jul-19	855	963
	Aug-19	880	929
	Sep-19	765	759
	Oct-19	786	875
	Nov-19	659	755
	Dec-19	864	745
2020	Jan-20	576	794

**Table 3: Referrals to Child Welfare Prevention Services by Source
January 2018 - January 2020**

Year	Month	Total Referrals	DCP	FC Agencies	PPRS Transfer	School	Self	Other Sources*
2018	Jan-18	1,399	74.5%	1.5%	10.7%	1.4%	2.9%	9.0%
	Feb-18	1,302	76.8%	1.5%	7.5%	1.3%	3.5%	9.4%
	Mar-18	1,396	79.7%	1.5%	7.4%	1.2%	2.6%	7.5%
	Apr-18	1,383	80.0%	1.2%	5.9%	1.1%	3.1%	8.7%
	May-18	1,189	78.8%	1.3%	7.0%	1.0%	3.3%	8.7%
	Jun-18	1,284	81.9%	0.5%	7.6%	0.9%	3.2%	6.0%
	Jul-18	1,403	82.5%	0.7%	8.3%	0.6%	2.4%	5.5%
	Aug-18	1,391	82.1%	1.7%	6.8%	0.4%	2.7%	6.3%
	Sep-18	1,135	84.4%	1.5%	7.0%	0.9%	4.1%	2.1%
	Oct-18	1,345	78.4%	1.5%	8.0%	1.2%	3.9%	7.0%
	Nov-18	1,107	73.8%	1.4%	9.5%	1.5%	4.3%	9.5%
	Dec-18	1,179	68.7%	1.7%	10.9%	2.7%	5.1%	10.9%
2019	Jan-19	1,373	74.3%	1.7%	8.4%	1.6%	3.8%	10.3%
	Feb-19	1,096	77.5%	0.9%	7.9%	2.2%	2.8%	8.7%
	Mar-19	1,292	72.4%	1.2%	10.4%	1.5%	4.4%	10.1%
	Apr-19	1,299	76.9%	1.5%	7.5%	2.8%	3.8%	7.4%
	May-19	1,312	80.0%	1.1%	7.9%	1.8%	3.2%	6.1%
	Jun-19	1,169	82.5%	1.4%	7.4%	0.7%	2.7%	5.3%
	Jul-19	1,322	81.3%	0.9%	7.1%	0.8%	4.5%	5.4%
	Aug-19	1,239	77.4%	1.9%	7.4%	0.7%	5.9%	6.6%
	Sep-19	1,157	77.4%	1.4%	10.2%	1.0%	3.5%	6.4%
	Oct-19	1,242	72.1%	1.4%	11.4%	1.5%	4.4%	9.1%
	Nov-19	990	68.9%	1.6%	11.2%	2.6%	6.0%	9.7%
	Dec-19	1,250	73.2%	1.5%	9.2%	1.8%	6.5%	7.8%
2020	Jan-20	935	82.0%	1.4%	6.2%	0.9%	3.9%	5.7%

Note: Data includes all referrals – accepted and rejected

*Other Community Sources includes the Department of Homeless Services, Family Court, FAP, Hospitals and Medical facilities, the NYC Housing Authority, Probation, and Sponsor Agencies.