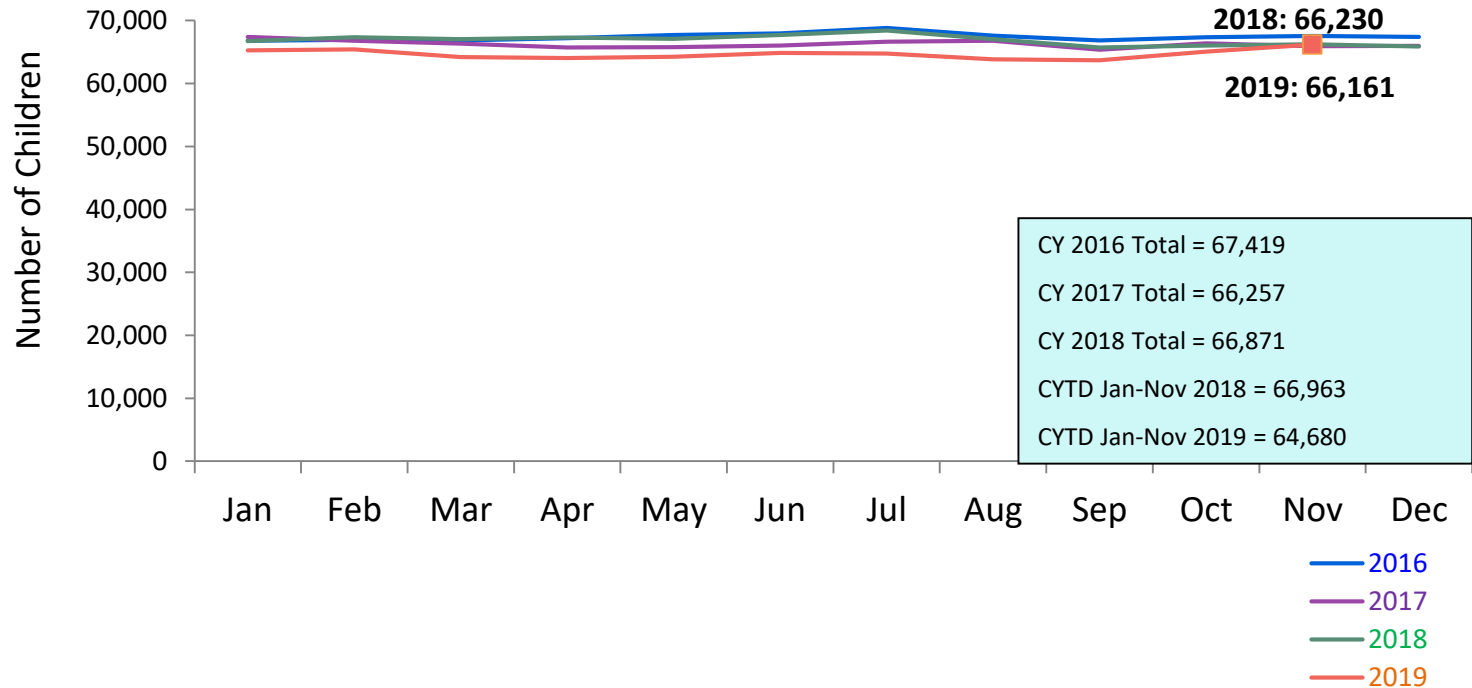


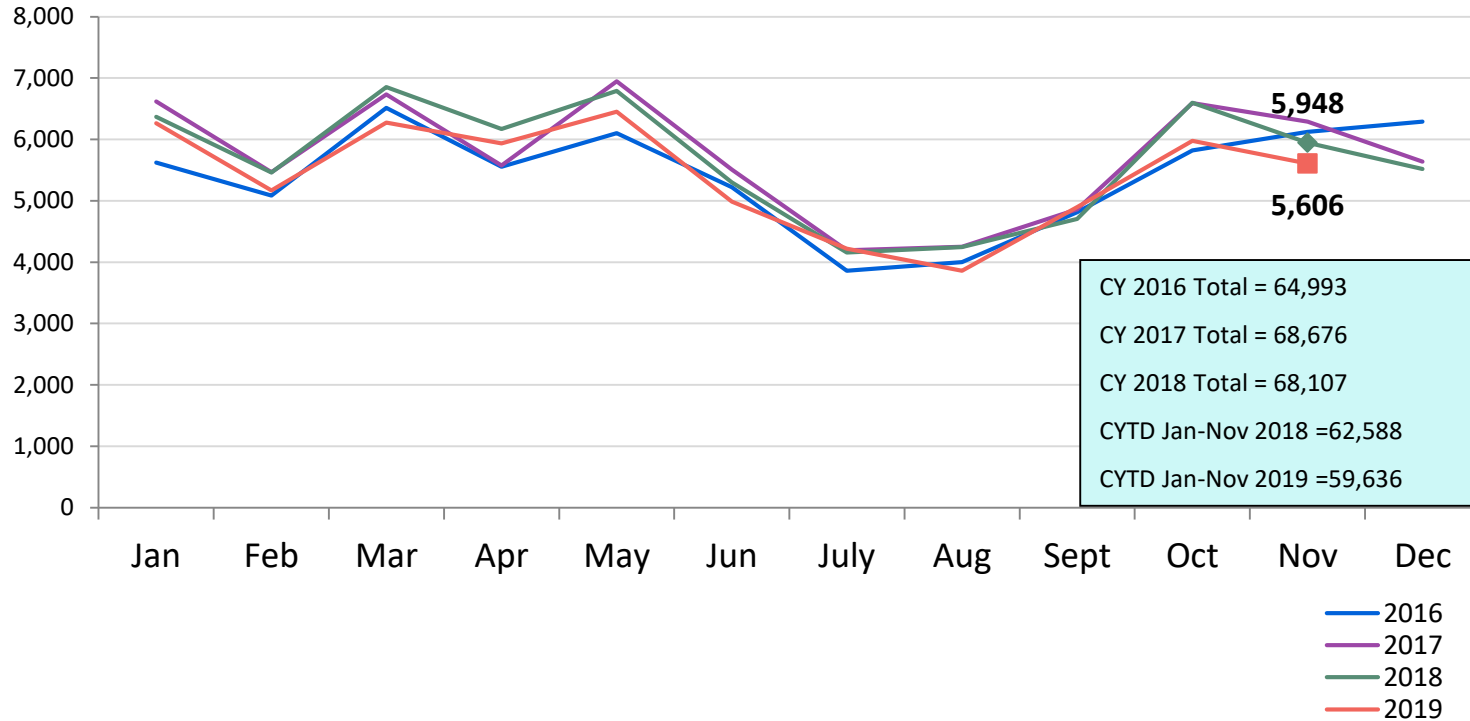
FLASH
monthly indicator
REPORT

December 2019

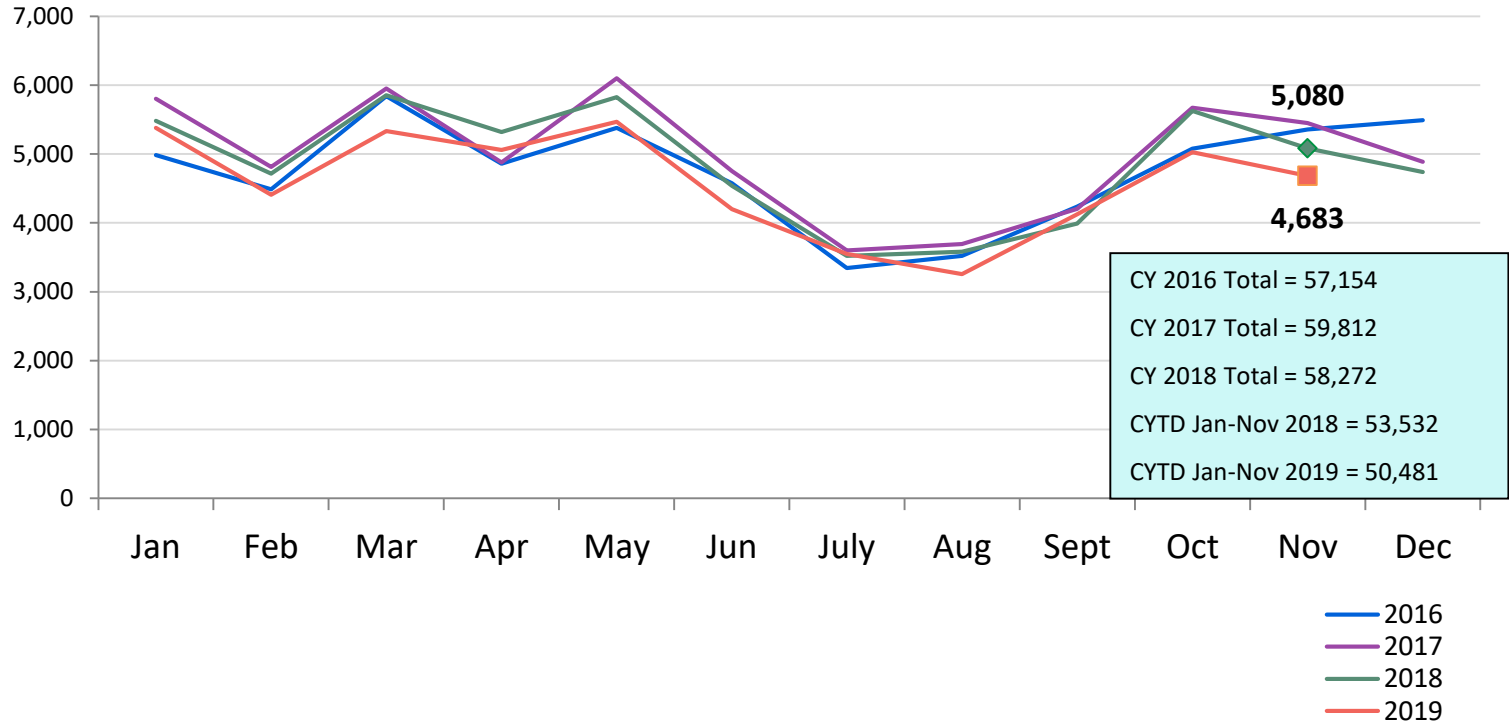
Children Using Vouchers for Child Care January 2016 – November 2019 (End of Month)



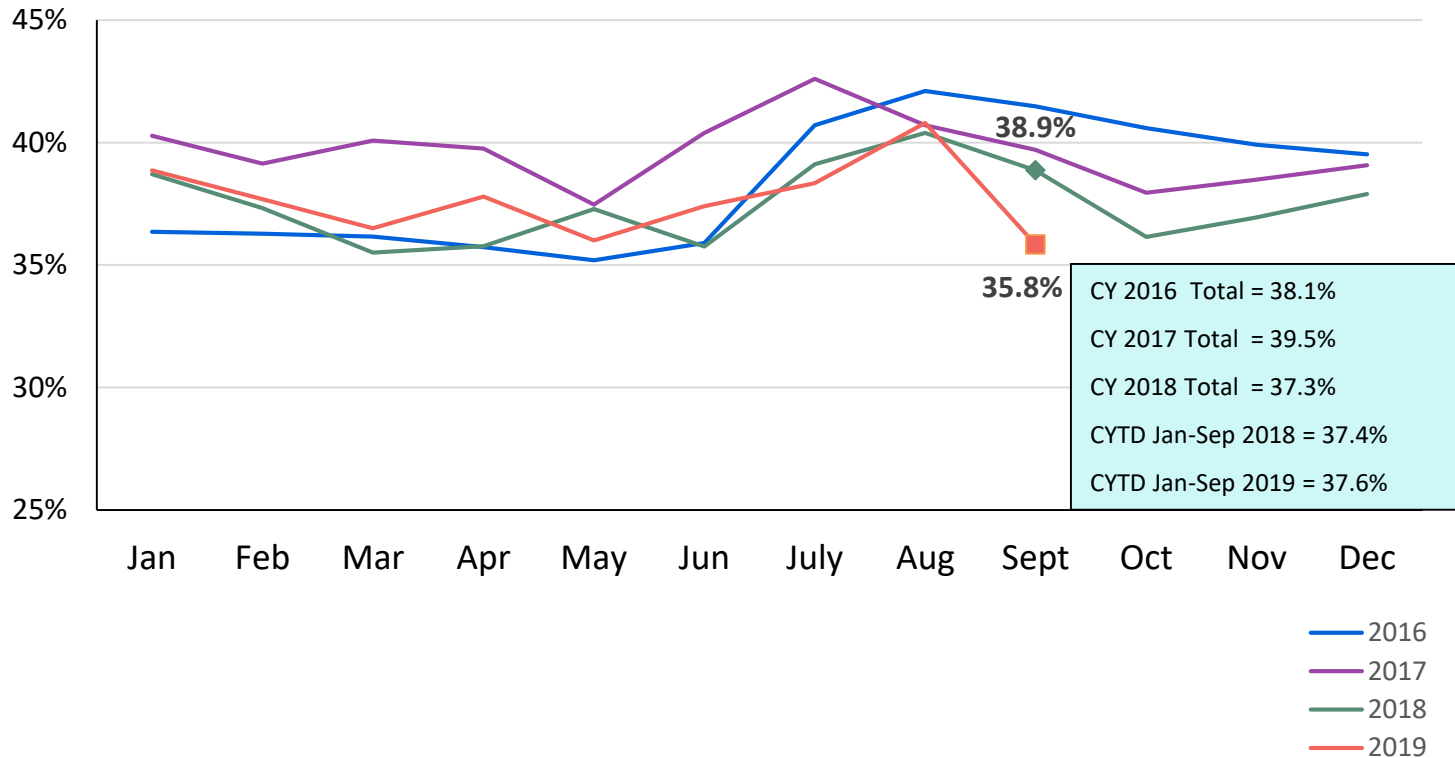
SCR Intakes January 2016 - November 2019



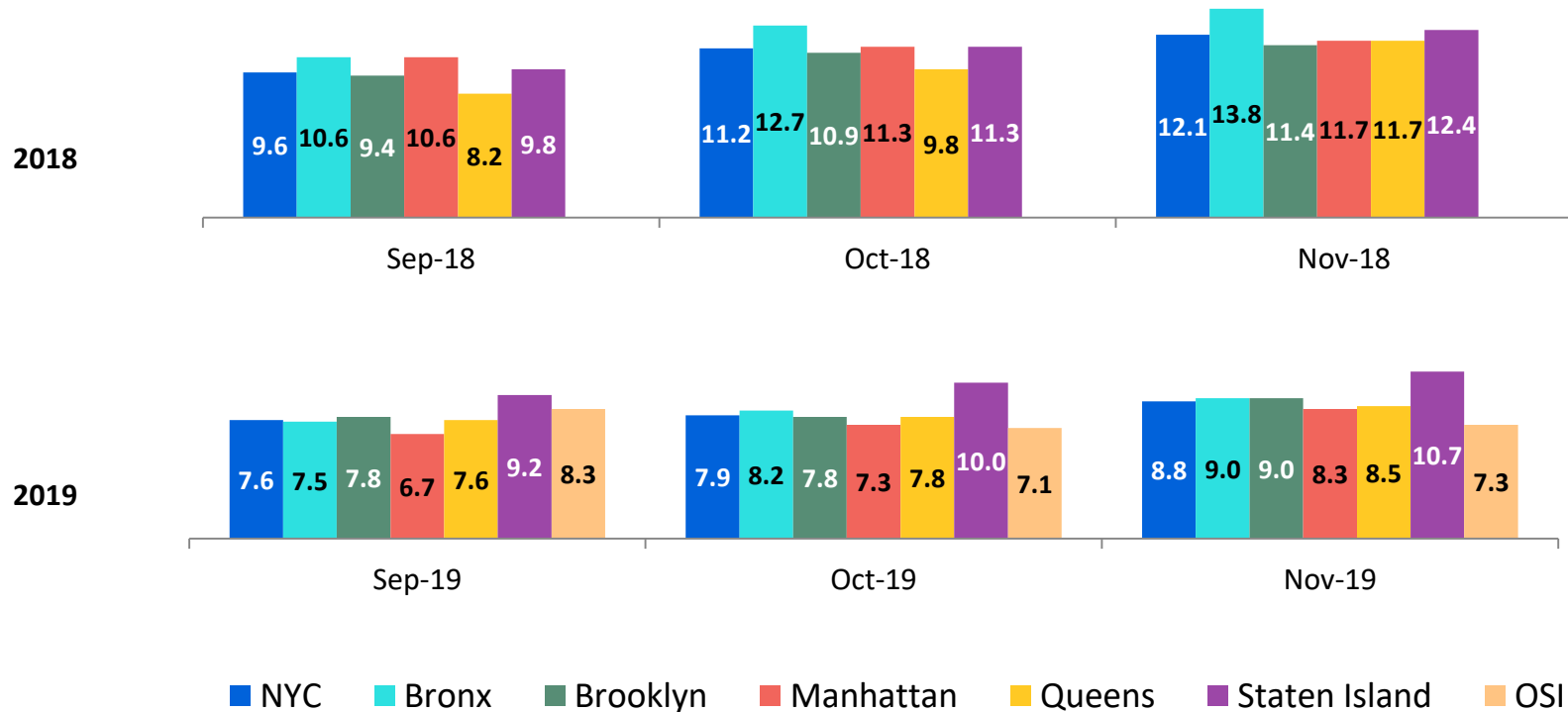
SCR Consolidated Investigations
January 2016 – November 2019



Percent of Investigations that Found Some Credible Evidence of Abuse or Neglect
January 2016 – September 2019

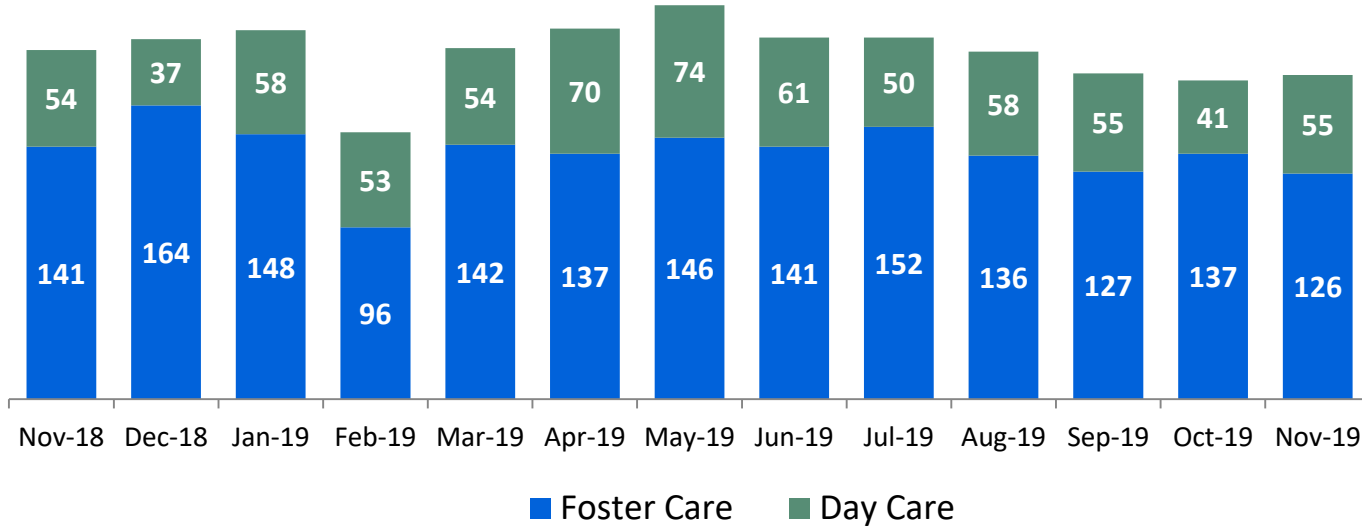


Average Child Protection Caseload*
September 2018 – November 2018 and September 2019 – November 2019



*Prior to December 2018 caseloads are of Protective/Diagnostic Unit (Child Protection, School Based, Sex Abuse and Hospital Units) caseworkers only. Beginning December 2018, all caseload carrying Child Protection Specialists (CPS) in investigative and Family Assessment Response Units are included. Includes CPS in Primary and Case Manager roles only.

OSI Foster Care and Day Care* Investigations November 2018 – November 2019



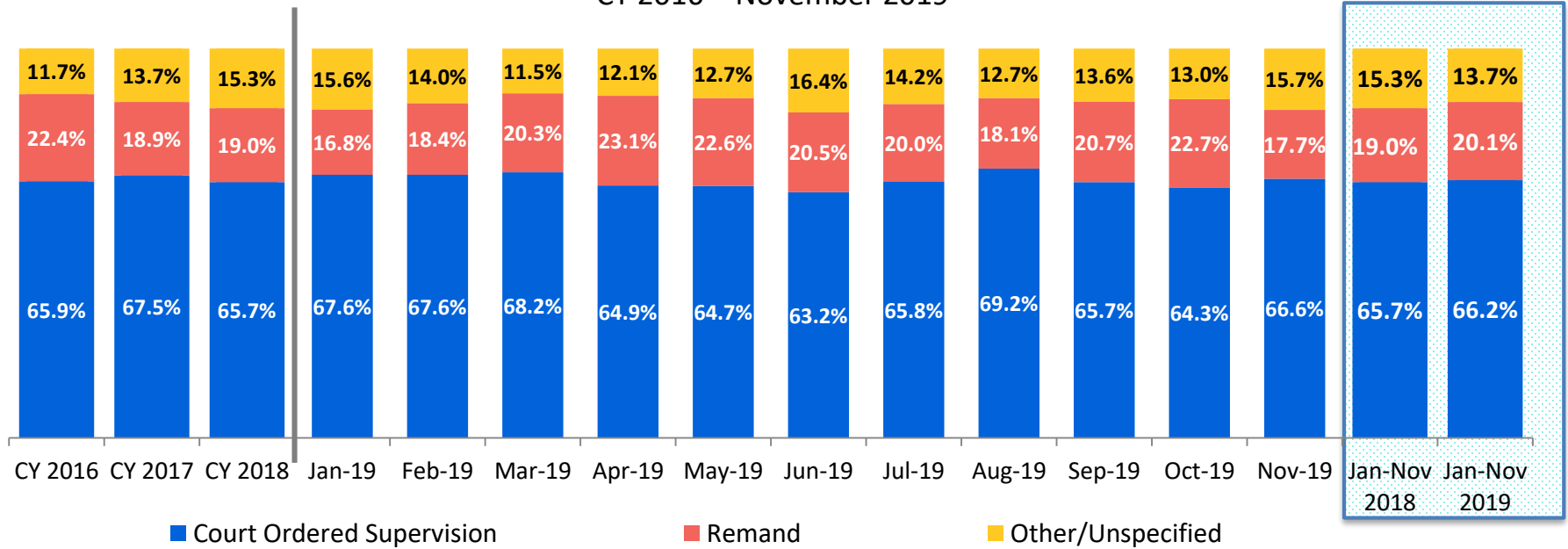
Calendar-Year-to-Date

Jan-Nov 2018	Jan-Nov 2019
673	629
1,535	1,488

	Nov 2018	Dec 2018	Jan 2019	Feb 2019	Mar 2019	Apr 2019	May 2019	Jun 2019	Jul 2019	Aug 2019	Sep 2019	Oct 2019	Nov 2019	CYTD Jan-Nov 2018	CYTD Jan-Nov 2019
Number of Investigations	195	201	206	149	196	207	220	202	202	194	182	178	181	2,208	2,117

*Day Care investigations include alleged abuse or maltreatment of children perpetrated by someone who cares for children in a setting that is not the child's familial home and that requires state or local government approval and is subject to state laws, regulations, and oversight. This includes, but is not limited to, ACS/DOE Early Care and Education programs.

Article 10 Filings and Initial Hearing Outcomes, Children CY 2016 – November 2019



	CY 2016	CY 2017	CY 2018	Jan 2019	Feb 2019	Mar 2019	Apr 2019	May 2019	Jun 2019	Jul 2019	Aug 2019	Sep 2019	Oct 2019	Nov 2019	CYTD Jan-Nov 2018	CYTD Jan-Nov 2019
Children with Article 10 Filings	10,973	15,975	13,319	1,092	1,056	1,040	1,127	1,080	1,002	1,021	1,025	810	1,070	964	12,301	11,287

Note: The category "Other/Unspecified" includes released with no supervision, no order issued and no outcome specified.

Remands Approved at Initial Article 10 Hearing by Removal Status November 2018 – November 2019

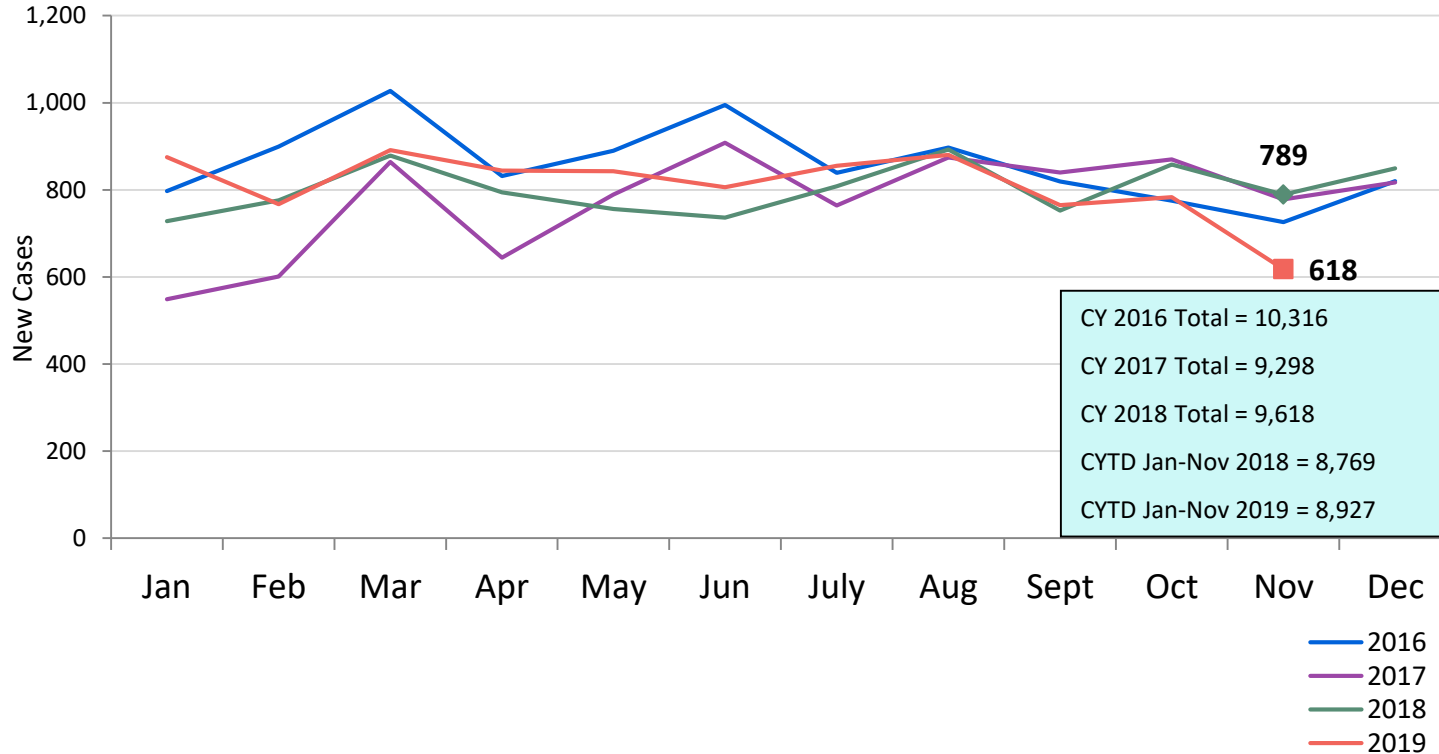


■ Pre-Filing Emergency Removals (court approved at initial hearing)

■ Post-Filing Removals (court ordered at initial hearing)

	Nov 2018	Dec 2018	Jan 2019	Feb 2019	Mar 2019	Apr 2019	May 2019	Jun 2019	Jul 2019	Aug 2019	Sep 2019	Oct 2019	Nov 2019	CYTD Jan-Nov 2018	CYTD Jan-Nov 2019
Children Remanded	167	193	184	194	211	260	244	205	204	186	168	243	171	2,340	2,270

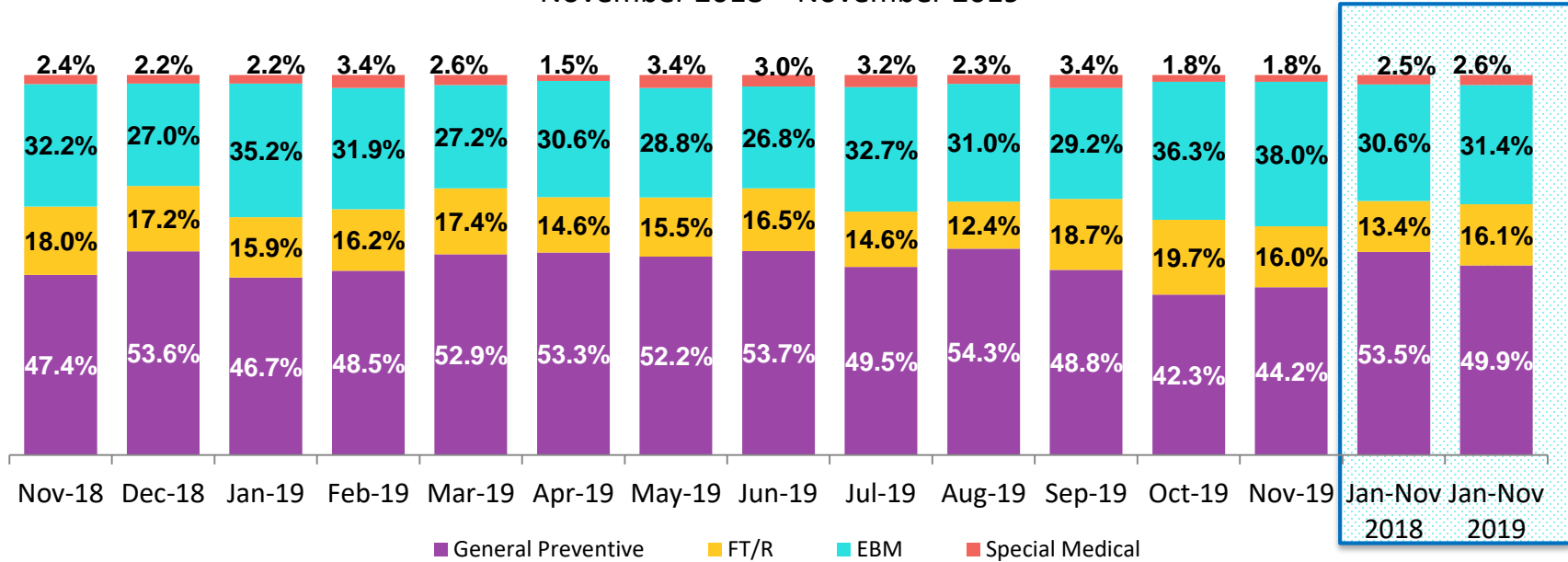
New Child Welfare Prevention Cases January 2016 – November 2019



*New prevention cases do not include cases transferred from one preventive program to another.

See Pages 30 and 31 of the Appendix for supporting data.

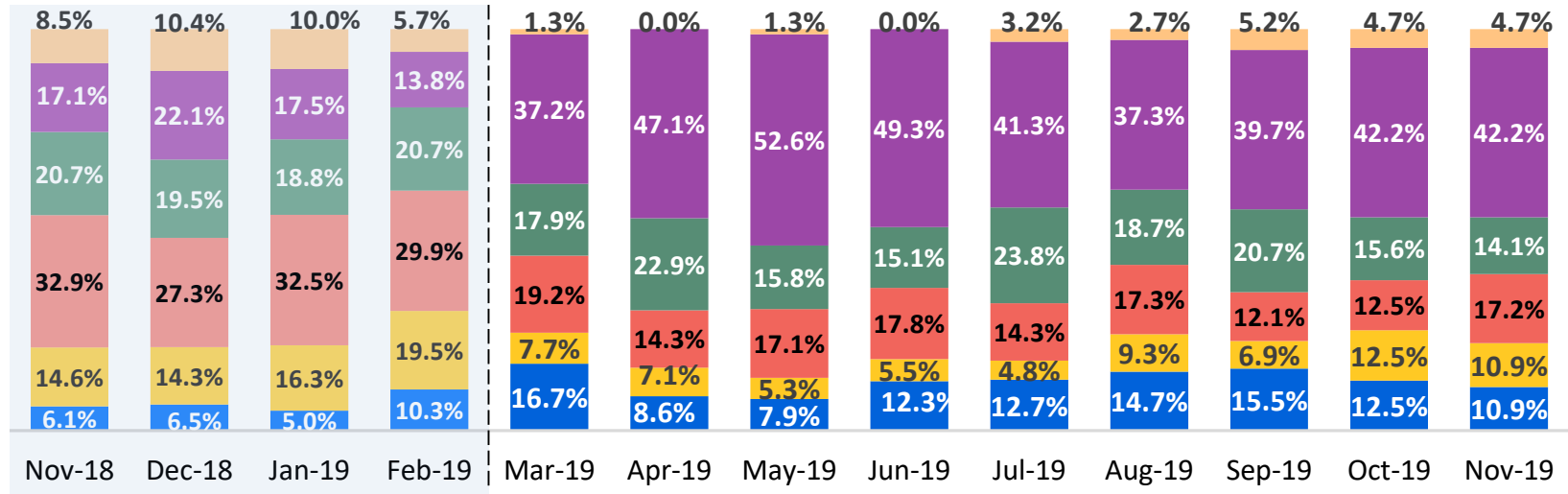
New Child Welfare Prevention Cases by Program Type* November 2018 – November 2019



	Nov 2018	Dec 2018	Jan 2019	Feb 2019	Mar 2019	Apr 2019	May 2019	Jun 2019	Jul 2019	Aug 2019	Sep 2019	Oct 2019	Nov 2019	CYTD Jan-Nov 2018	CYTD Jan-Nov 2019
Number of New Preventive Cases	789	849	875	767	891	844	843	806	855	880	765	783	618	8,769	8,927

* New prevention cases do not include cases transferred from one prevention program to another.

Average Daily Children's Center Population November 2018 – November 2019



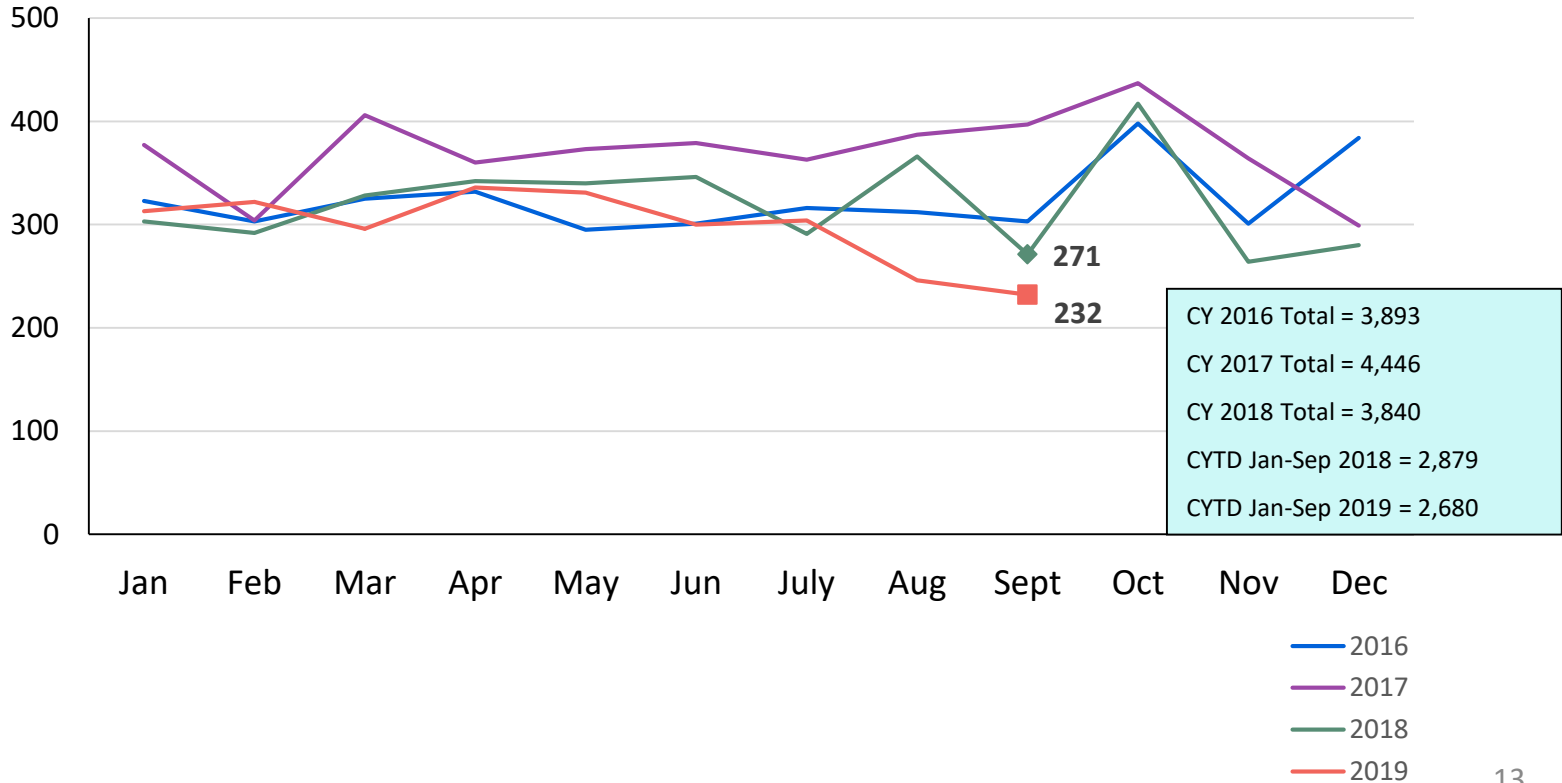
Through Feb-19: ■ Newborn - 1 year old ■ 2-6 years old ■ 7-12 years old ■ 13-15 years old ■ 16-17 years old ■ 18+ years old

Mar-19 - present: ■ Newborn - 3 years old ■ 4-6 years old ■ 7-10 years old ■ 11-13 years old ■ 14-18 years old ■ 19+ years old

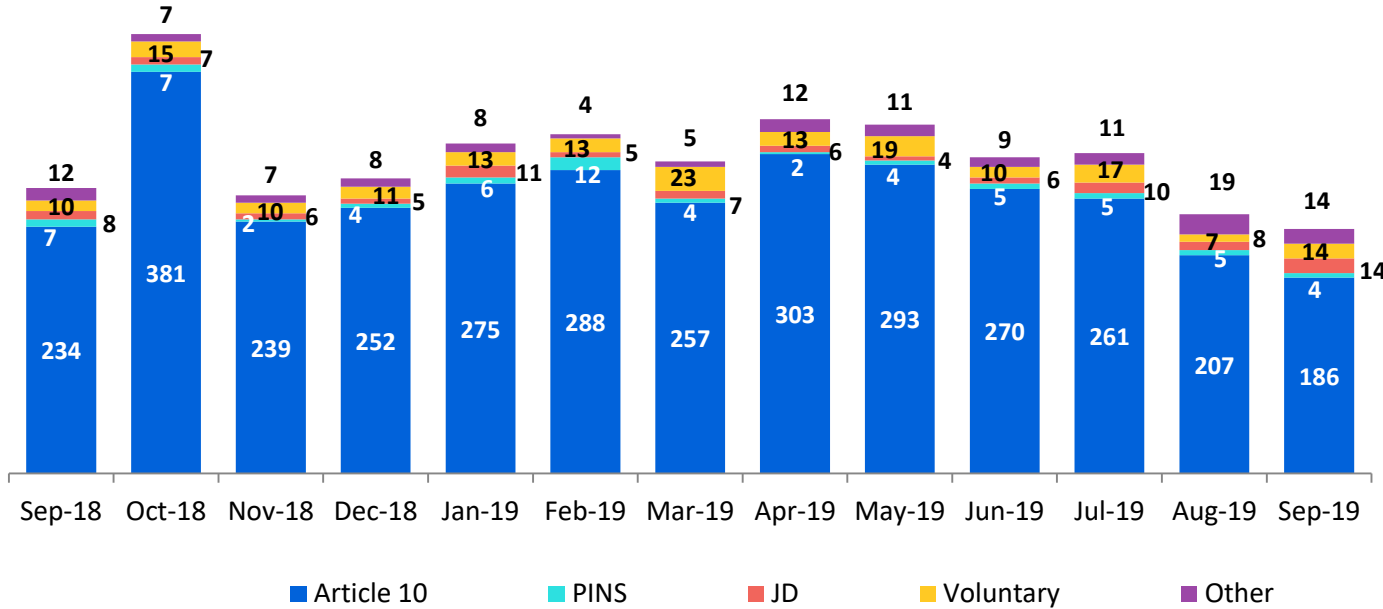
	Nov 2018*	Dec 2018*	Jan 2019*	Feb 2019*	Mar 2019	Apr 2019	May 2019	Jun 2019	Jul 2019	Aug 2019	Sep 2019	Oct 2019	Nov 2019	CYTD Jan-Nov 2018	CYTD Jan-Nov 2019
Average Number of Children	82	77	80	87	78	70	76	73	63	75	58	64	64	77	72

* Different age groups were used from September 2018 to February 2019.

New Placements of Children into Foster Care January 2016 – September 2019



Reason for New Placements of Children into Foster Care September 2018 – September 2019

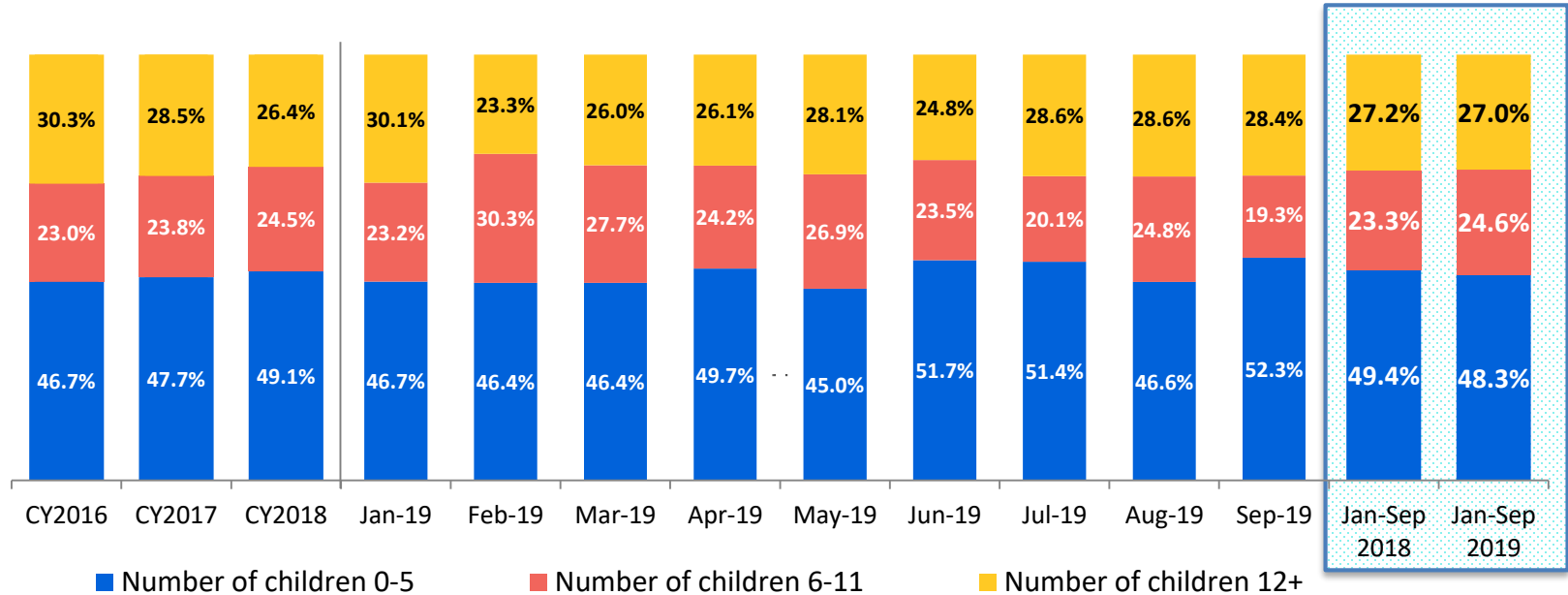


Calendar-Year-to-Date

Jan-Sep 2018	Jan-Sep 2019
76	93
116	129
76	71
61	47
2,550	2,340

	Sep 2018	Oct 2018	Nov 2018	Dec 2018	Jan 2019	Feb 2019	Mar 2019	Apr 2019	May 2019	Jun 2019	Jul 2019	Aug 2019	Sep 2019	CYTD Jan-Sep 2018	CYTD Jan-Sep 2019
Number of Placements	271	417	264	280	313	322	296	336	331	300	304	246	232	2,879	2,680

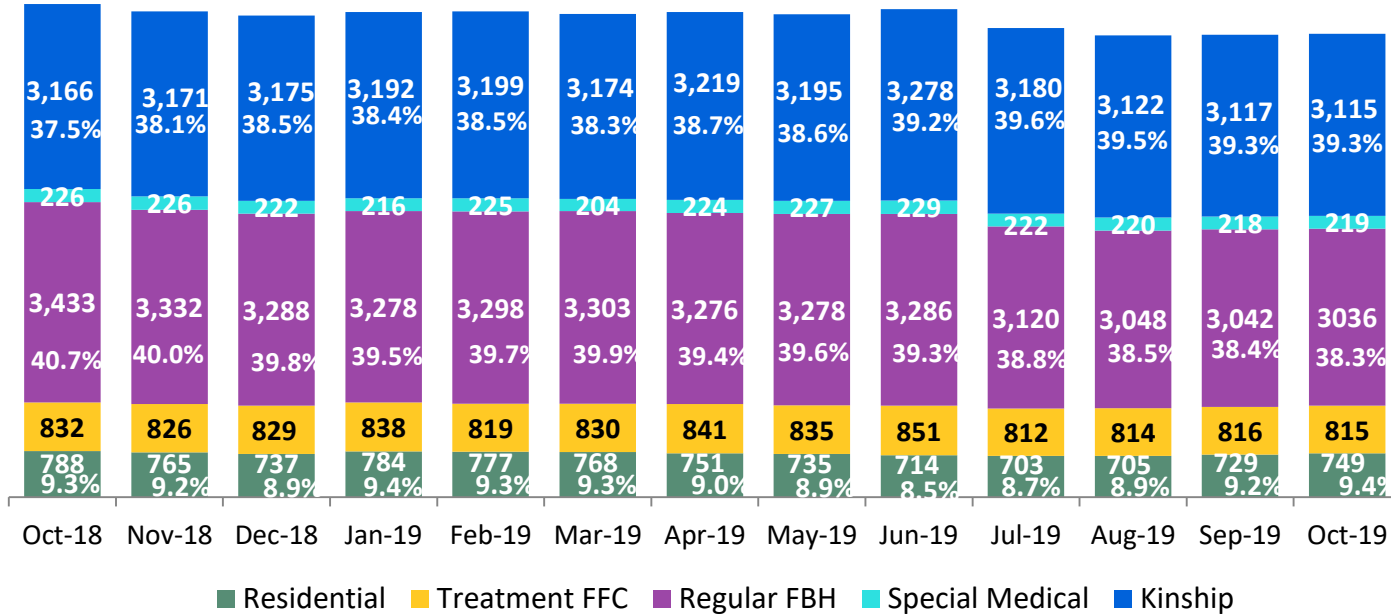
New Placements of Children into Foster Care* by Age CY 2016 – September 2019



	CY 2016	CY 2017	CY 2018	Jan 2019	Feb 2019	Mar 2019	Apr 2019	May 2019	Jun 2019	Jul 2019	Aug 2019	Sep 2019	CYTD Jan-Sep 2018	CYTD Jan-Sep 2019
Number of Placements	3,680	4,285	3,746	302	317	289	330	327	294	294	238	218	2,803	2,609

*Excludes CTH placements.

Children in Foster Care * October 2018 – October 2019 (end of month)



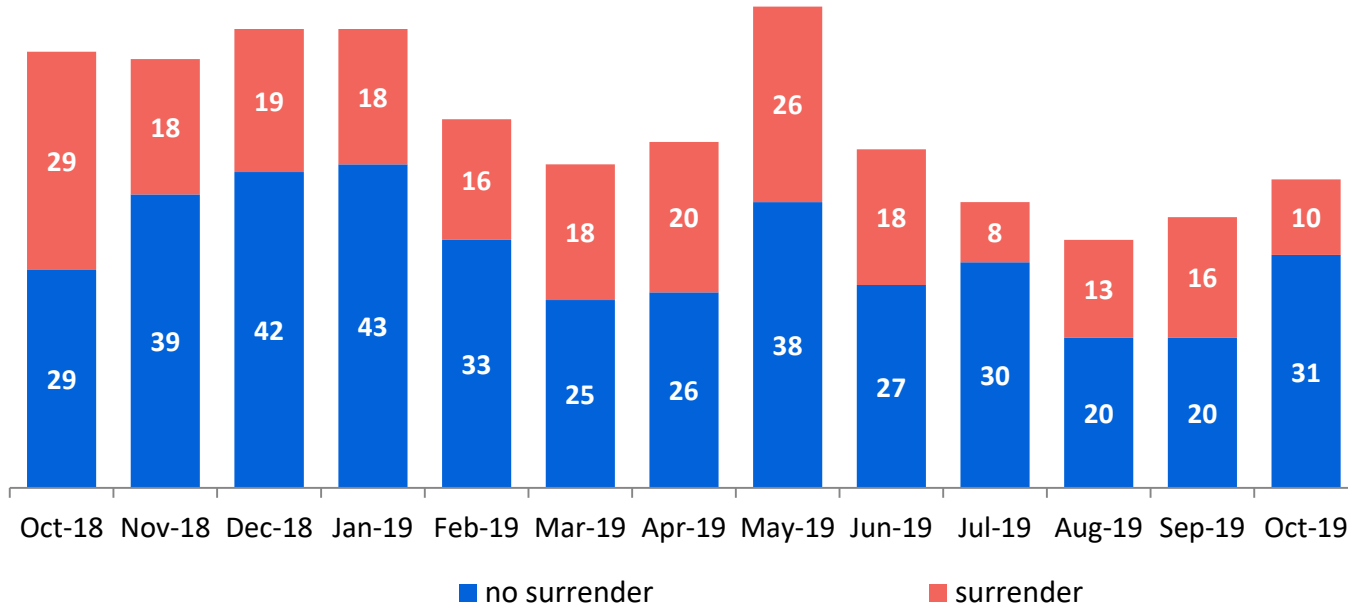
Calendar-Year-to-Date (Average)

Jan-Oct 2018	Jan-Oct 2019
3,022	3,179
238	220
3,636	3,197
846	827
804	742

	Oct 2018	Nov 2018	Dec 2018	Jan 2019	Feb 2019	Mar 2019	Apr 2019	May 2019	Jun 2019	Jul 2019	Aug 2019	Sep 2019	Oct 2019	CYTD Jan-Oct 2018	CYTD Jan-Oct 2019
Number in Foster Care	8,444	8,320	8,251	8,308	8,317	8,279	8,310	8,270	8,358	8,037	7,909	7,922	7,934	8,547	8,164

*Excludes CTH placements and includes children in 24 hour care and approximately 200 young children who are living in foster homes or residential care facilities with their mothers who are in foster care (8D children).

Children Freed for Adoption, Surrender by at Least One Parent October 2018 – October 2019

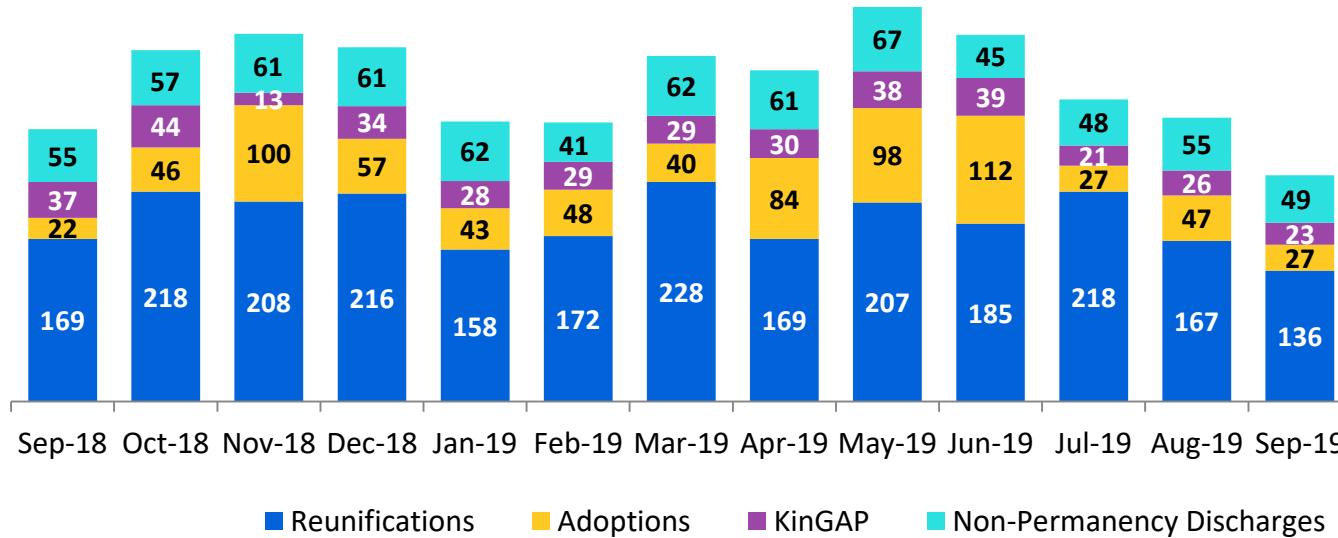


Calendar-Year-to-Date

Jan-Oct 2018	Jan-Oct 2019
254	163
380	293

	Oct 2018	Nov 2018	Dec 2018	Jan 2019	Feb 2019	Mar 2019	Apr 2019	May 2019	Jun 2019	Jul 2019	Aug 2019	Sep 2019	Oct 2019	CYTD Jan-Oct 2018	CYTD Jan-Oct 2019
Number Freed for Adoption	58	57	61	61	49	43	46	64	45	38	33	36	41	634	456

Permanency and Non-Permanency* Discharges from Foster Care** September 2018 – September 2019



Calendar-Year-to-Date

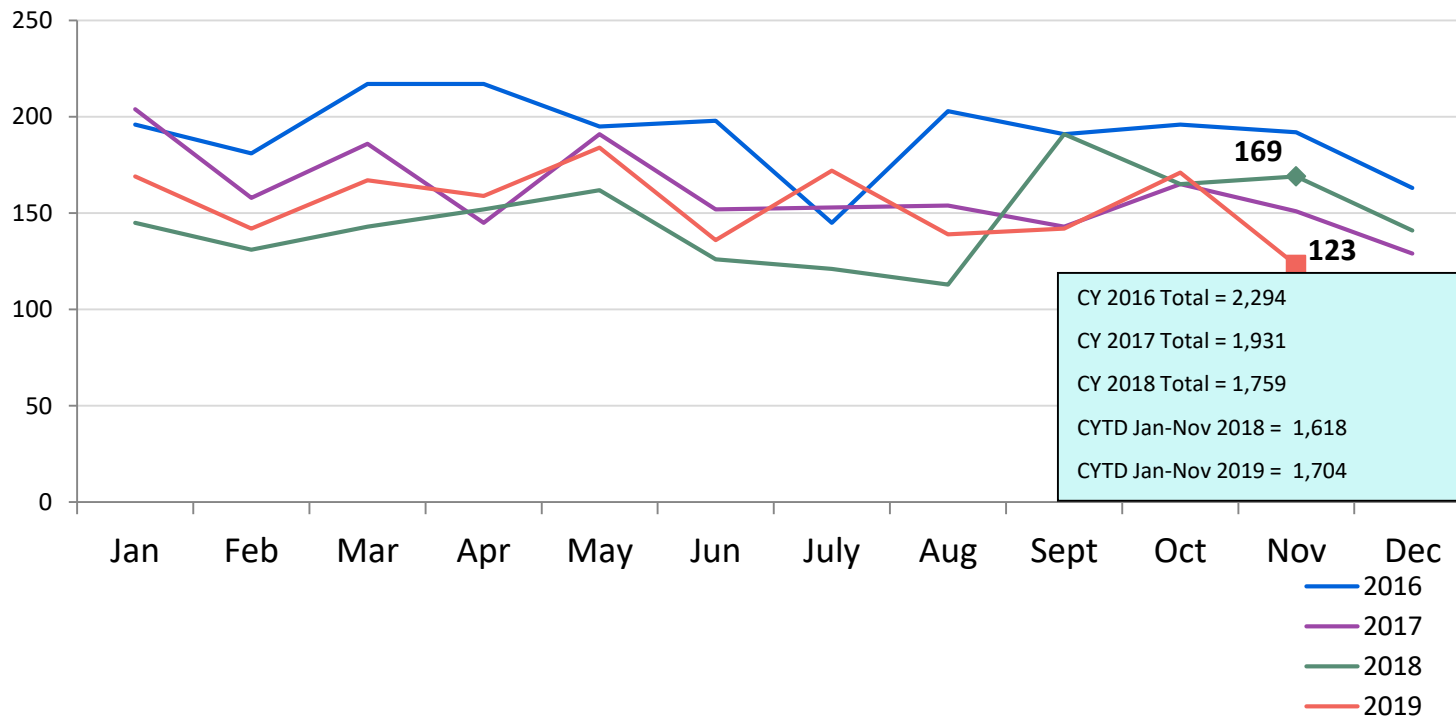
Jan-Sep 2018	Jan-Sep 2019
510	490
221	263
607	526
1,867	1,640

	Sep 2018	Oct 2018	Nov 2018	Dec 2018	Jan 2019	Feb 2019	Mar 2019	Apr 2019	May 2019	Jun 2019	Jul 2019	Aug 2019	Sep 2019	CYTD Jan-Sep 2018	CYTD Jan-Sep 2019
Number of Discharges	283	365	382	368	291	290	359	344	410	381	314	295	235	3,205	2,919

*Non-permanency discharges include AWOL, APPLA (youth 18-20 years old discharged to self and youth who reached 21 while in care), and other discharge destinations such as psychiatric institutions and correctional facilities and discharges with unspecified destinations.

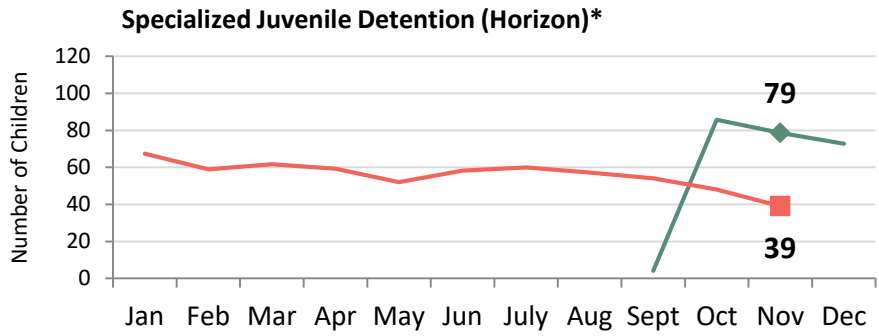
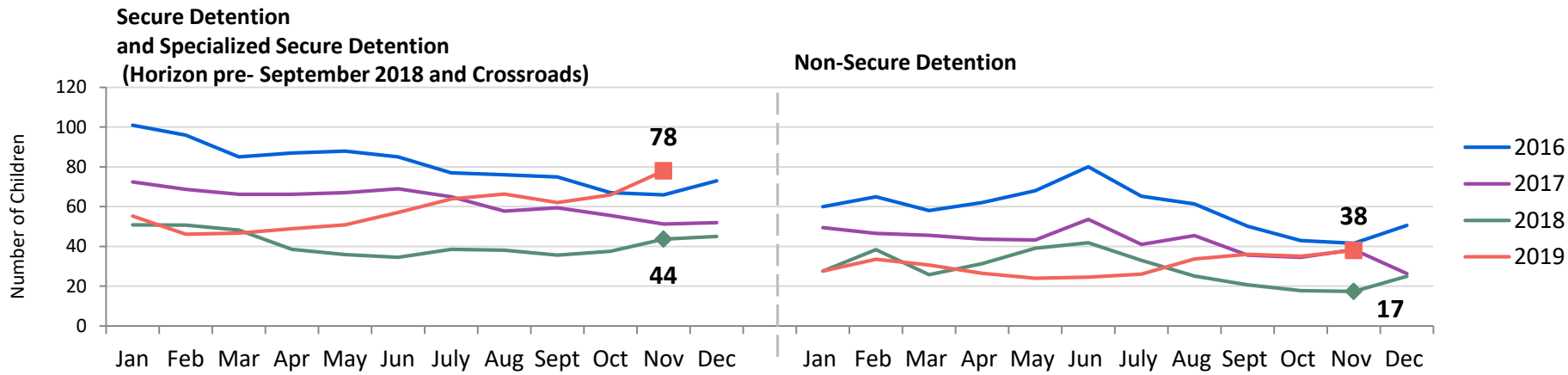
**Excludes discharges of youth from CTH placements.

Total Monthly Admissions to Detention January 2016 – November 2019*



*Beginning in September 2018 detention admissions include admissions to the Horizon Juvenile Facility of 16 and 17 year olds moved off Rikers Island and pre-Raise the Age 17 year olds.

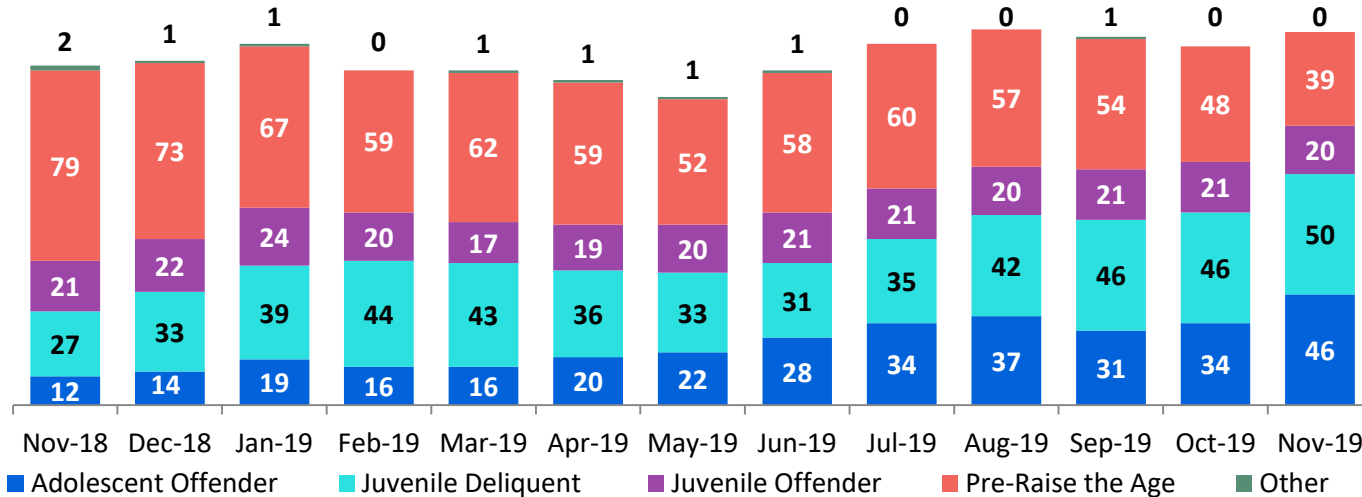
Detention Monthly Average Daily Population January 2016 – November 2019*



Calendar-Year-to-Date		
	Jan-Nov 2018	Jan-Nov 2019
SD and SSD (Horizon pre- Sep 2018 and Crossroads)	40.2	58.4
Non-Secure Detention	28.9	30.5
Specialized Juvenile Detention (Horizon)*	N/A	56.0

*Beginning in September 2018 the Horizon Juvenile Facility is housing 16 and 17 year olds moved off Rikers Island and pre-Raise the Age 17 year olds.

Detention Total Monthly Average Daily Population by Case Type* November 2018 – November 2019

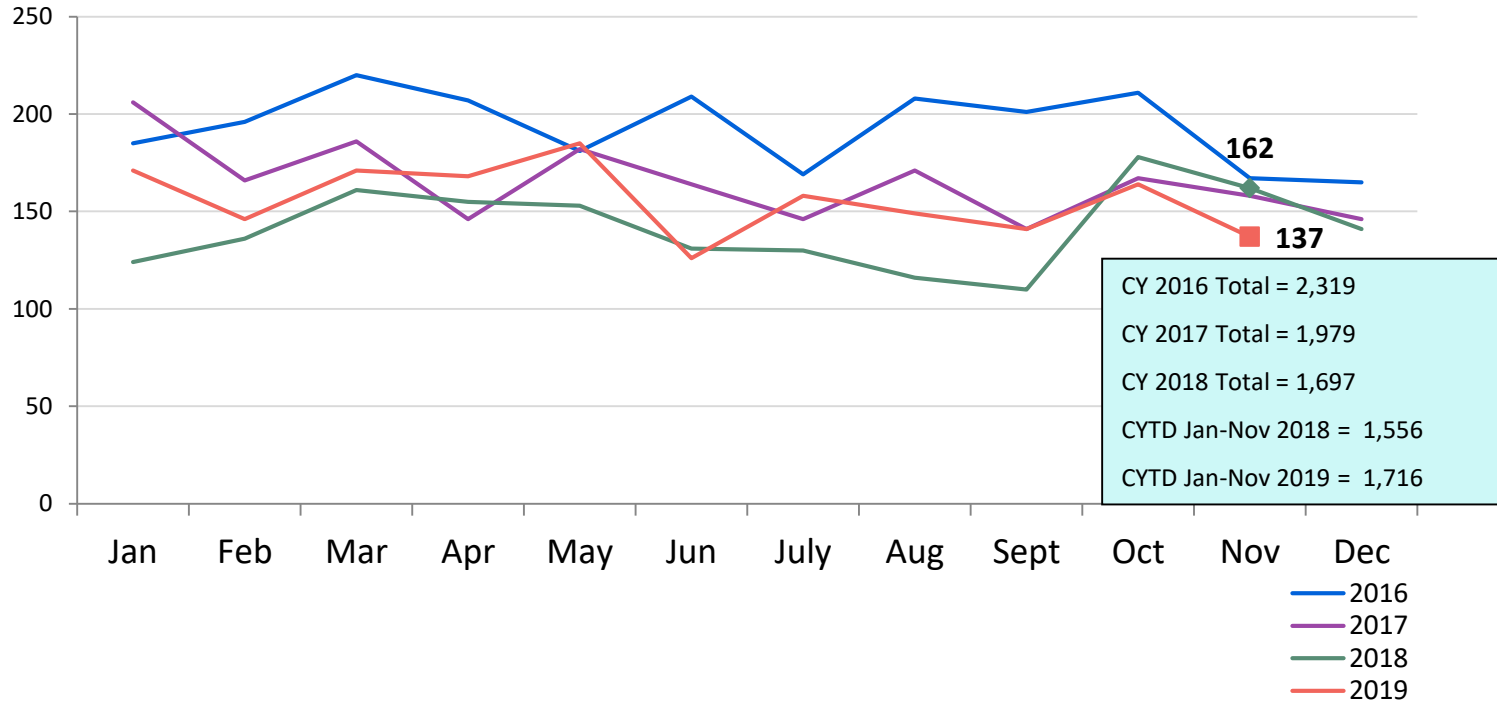


	Jan-Nov 2018	Jan-Nov 2019
Adolescent Offender	1.9	0.7
Juvenile Delinquent	N/A	56.0
Juvenile Offender	24.0	20.3
Pre-Raise the Age	42.7	40.4
Other	N/A	27.5

Nov 2018	Dec 2018	Jan 2019	Feb 2019	Mar 2019	Apr 2019	May 2019	Jun 2019	Jul 2019	Aug 2019	Sep 2019	Oct 2019	Nov 2019	CYTD Jan-Nov 2018	CYTD Jan-Nov 2019
140	143	150	139	139	135	127	140	150	157	152	149	155	85.3	144.9

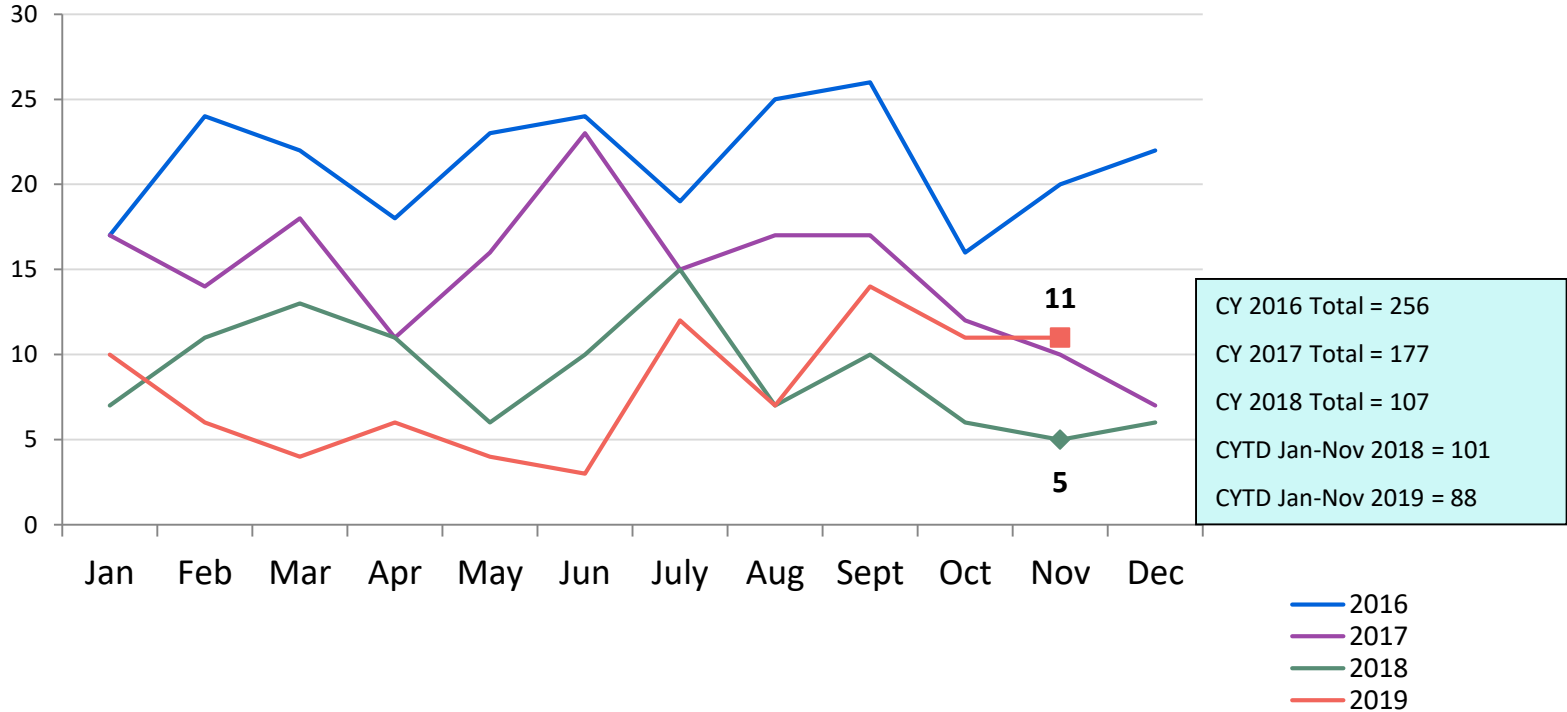
*Case Type definitions: Adolescent Offender (AO) is a person 16 years of age charged with a felony on or after 10/1/18 and a person 17 years of age charged with a felony on or after 10/1/19; Juvenile Delinquent (JD) is a person 7-15 years of age who has committed an act which would be considered a crime if the person were old enough and capable of being treated as an adult. Sixteen year olds charged with a misdemeanor (except those charged under NYS Vehicle and Traffic Law) on or after 10/1/18 and 17 year olds charged on or after 10/1/19 are also JDs.; Juvenile Offender (JO) a person 13-15 years of age with a serious violent felony charge; Pre-Raise the Age is a person who was 16 or 17 years old when transferred off Rikers Island 10/1/18 and 17 year olds charged with crimes 10/1/18- 9/30/19; and Other case type includes youth detained for other authorities and ACS warrants.

Total Monthly Releases from Detention January 2016 – November 2019*

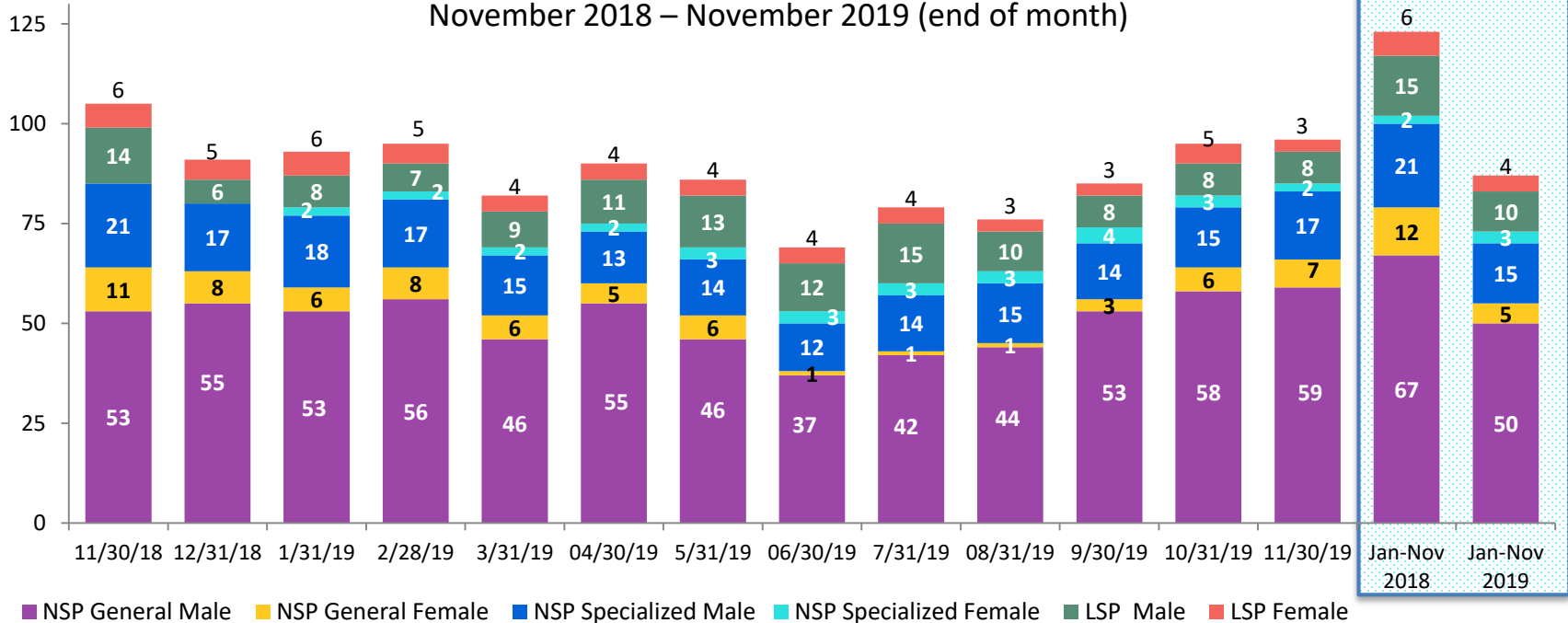


*Beginning in October 2018 detention releases include releases from the Horizon Juvenile Facility of 16 and 17 year olds moved off Rikers Island and pre-Raise the Age 17 year olds.

Close to Home Admissions*
January 2016 – November 2019



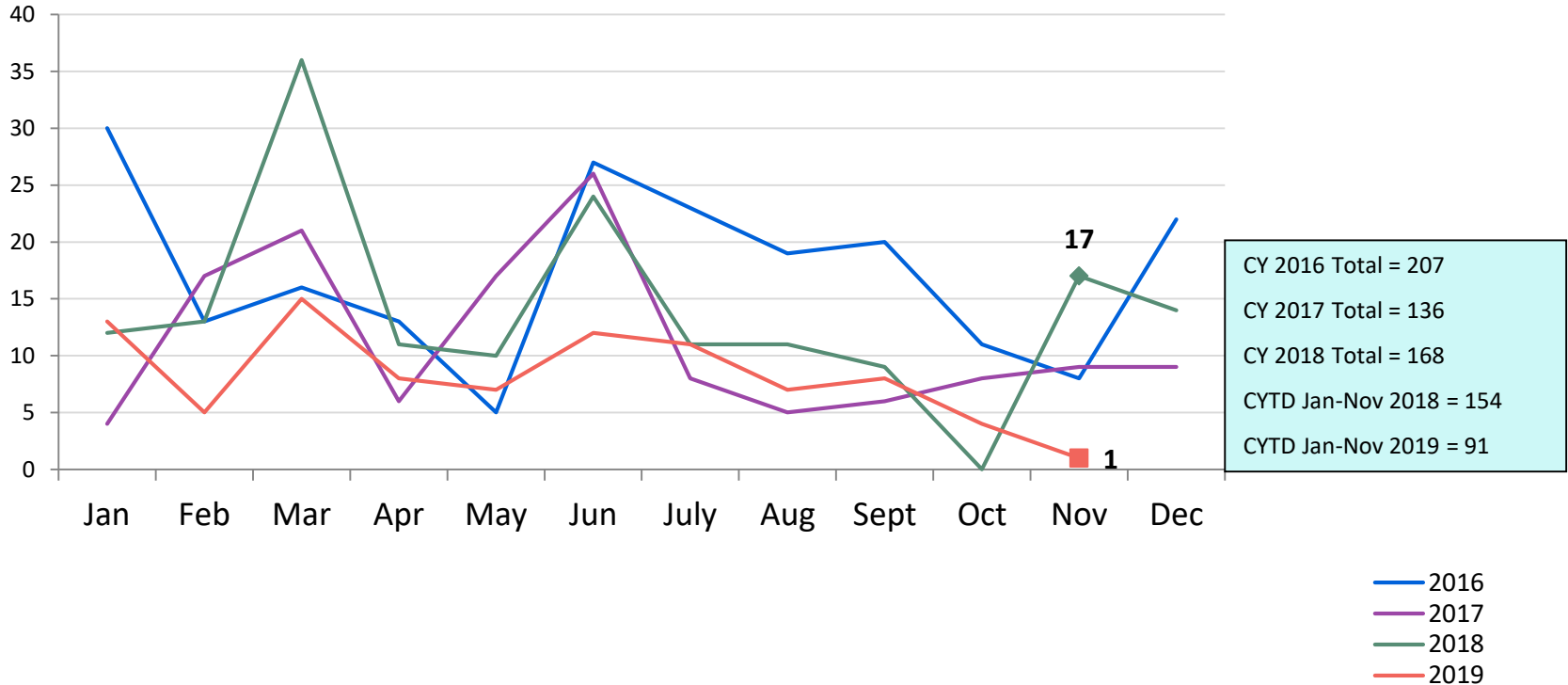
CTH Placement, in 24-hour Care
November 2018 – November 2019 (end of month)



Number in Placement

	11/30/18	12/31/18	1/31/19	2/28/19	3/31/19	4/30/19	5/31/19	6/30/19	7/31/19	8/31/19	9/30/19	10/31/19	11/30/19	CYTD Jan-Nov 2018	CYTD Jan-Nov 2019
NSP	85	80	79	83	69	75	69	53	60	63	74	82	85	101	72
LSP	20	11	14	12	13	15	17	16	19	13	11	13	11	21	14

Releases from Close to Home Placement to Aftercare
January 2016 – November 2019



Appendix

Figure 1: SCR Intakes by Reporter Group, September 2018 – November 2018 and September 2019 – November 2019

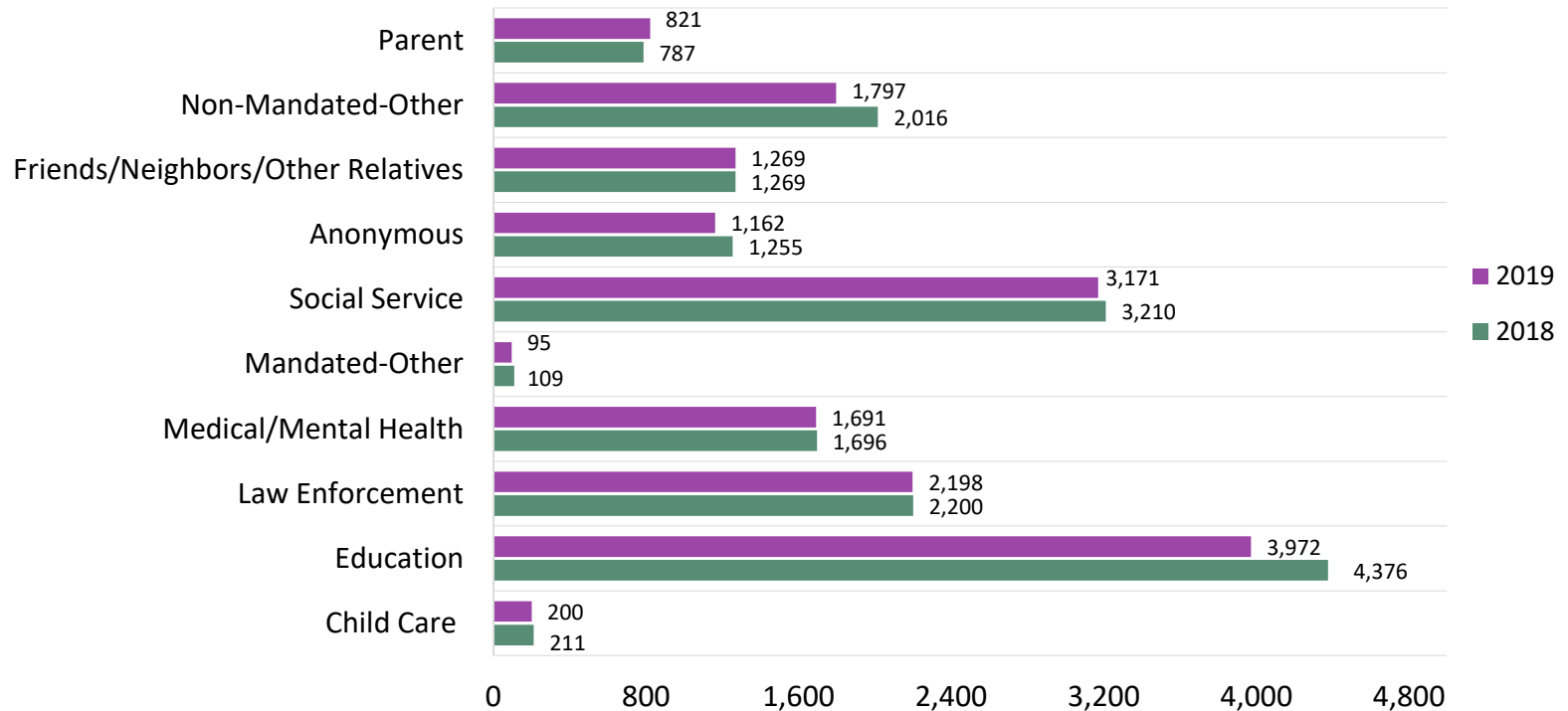
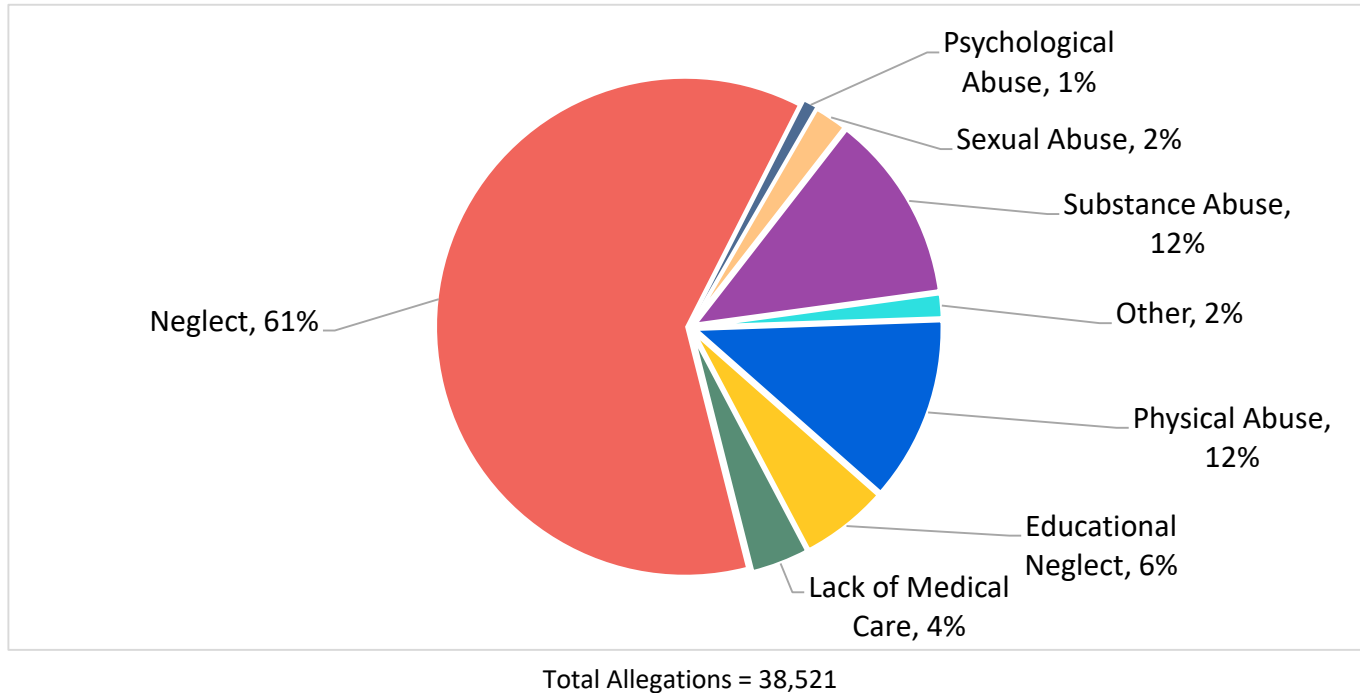


Figure 2: SCR Allegations
September 2019 – November 2019



Allegations are grouped as follows: Physical Abuse - burn, fatality, fracture, choking, twisting, shaking, excessive corporal punishment, internal injuries, lacerations, bruises, welts, poisoning, noxious substances; Educational Neglect – educational neglect; Lack of Medical Care – lack of medical care; Neglect - inadequate guardianship, inadequate food, clothing, shelter, lack of supervision, malnutrition, failure to thrive, swelling, dislocations, sprains; Psychological Abuse - isolation, emotional neglect; Sexual Abuse – sexual abuse; Substance Abuse - parental drug use, child drug use; and Other -abandonment, inappropriate custodial conduct.

Figure 3: SCR Investigations by Borough
September 2018 – November 2018 and September 2019 – November 2019

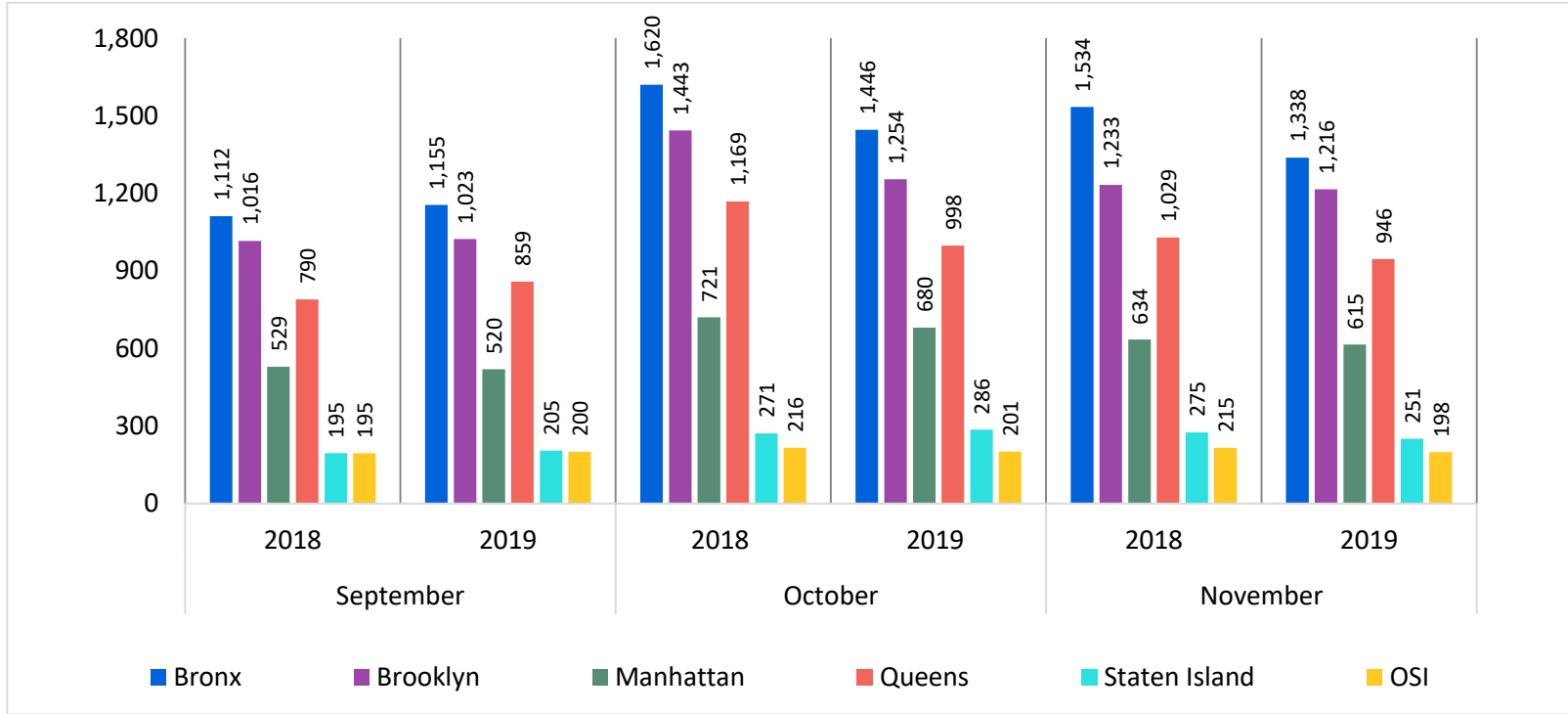


Table 1: SCR Investigations Changes by Borough
September 2018 – November 2018 and September 2019 – November 2019

Month	Year	Bronx	Brooklyn	Manhattan	Queens	Staten Island	OSI	Other	Total
September	2018	1,112	1,016	529	790	195	195	155	3,992
	2019	1,155	1,023	520	859	205	200	162	4,124
	% Change	3.9%	0.7%	-1.7%	8.7%	5.1%	2.6%	4.5%	3.3%
October	2018	1,620	1,443	721	1,169	271	216	186	5,626
	2019	1,446	1,254	680	998	286	201	160	5,025
	% Change	-10.7%	-13.1%	-5.7%	-14.6%	5.5%	-6.9%	-14.0%	-10.7%
November	2018	1,534	1,233	634	1,029	275	215	160	5,080
	2019	1,338	1,216	615	946	251	198	119	4,683
	% Change	-12.8%	-1.4%	-3.0%	-8.1%	-8.7%	-7.9%	-25.6%	-7.8%
Total	2018	4,266	3,692	1,884	2,988	741	626	501	14,698
	2019	3,939	3,493	1,815	2,803	742	599	441	13,832
	% Change	-7.7%	-5.4%	-3.7%	-6.2%	0.1%	-4.3%	-12.0%	-5.9%

**Table 2: Child Welfare Prevention Cases: New and Closed
January 2017 - November 2019**

Year	Month	New Cases	Closed Cases
2017	Jan-17	549	449
	Feb-17	601	920
	Mar-17	864	1,032
	Apr-17	644	780
	May-17	789	925
	Jun-17	908	944
	Jul-17	764	852
	Aug-17	874	864
	Sep-17	840	747
	Oct-17	870	762
	Nov-17	778	737
	Dec-17	817	728
2018	Jan-18	728	567
	Feb-18	776	783
	Mar-18	879	776
	Apr-18	794	613
	May-18	756	857
	Jun-18	736	837
	Jul-18	808	856
	Aug-18	893	954
	Sep-18	752	755
	Oct-18	858	767
	Nov-18	789	699
	Dec-18	849	717
2019	Jan-19	875	708
	Feb-19	767	726
	Mar-19	891	856
	Apr-19	844	802
	May-19	843	864
	Jun-19	806	841
	Jul-19	855	963
	Aug-19	880	929
	Sep-19	765	759
	Oct-19	783	876
	Nov-19	618	759

**Table 3: Referrals to Child Welfare Prevention Services by Source
January 2017 - November 2019**

Year	Month	Total Referrals	DCP	FC Agencies	PPRS Transfer	School	Self	Other Sources*
2017	Jan-17	1,046	78.5%	1.4%	6.7%	0.7%	3.1%	9.7%
	Feb-17	1,067	77.7%	0.8%	6.7%	0.8%	3.8%	10.1%
	Mar-17	1,383	79.1%	0.6%	6.9%	0.9%	4.0%	8.5%
	Apr-17	1,116	81.2%	1.0%	5.9%	1.1%	1.4%	9.4%
	May-17	1,335	81.9%	0.9%	5.5%	1.3%	2.8%	7.6%
	Jun-17	1,449	82.3%	0.8%	5.9%	1.2%	2.9%	6.9%
	Jul-17	1,273	83.3%	0.9%	7.9%	0.7%	1.9%	5.3%
	Aug-17	1,429	82.7%	0.6%	9.3%	0.3%	1.7%	5.2%
	Sep-17	1,383	79.6%	1.6%	7.7%	0.8%	2.8%	7.4%
	Oct-17	1,489	77.5%	1.5%	7.5%	1.0%	3.1%	9.4%
	Nov-17	1,235	75.1%	1.5%	8.8%	2.2%	3.6%	8.8%
	Dec-17	1,227	70.5%	1.6%	10.2%	2.4%	3.7%	11.5%
2018	Jan-18	1,399	74.5%	1.5%	10.7%	1.4%	2.9%	9.0%
	Feb-18	1,302	76.8%	1.5%	7.5%	1.3%	3.5%	9.4%
	Mar-18	1,396	79.7%	1.5%	7.4%	1.2%	2.6%	7.5%
	Apr-18	1,383	80.0%	1.2%	5.9%	1.1%	3.1%	8.7%
	May-18	1,189	78.8%	1.3%	7.0%	1.0%	3.3%	8.7%
	Jun-18	1,284	81.9%	0.5%	7.6%	0.9%	3.2%	6.0%
	Jul-18	1,403	82.5%	0.7%	8.3%	0.6%	2.4%	5.5%
	Aug-18	1,391	82.1%	1.7%	6.8%	0.4%	2.7%	6.3%
	Sep-18	1,135	84.4%	1.5%	7.0%	0.9%	4.1%	2.1%
	Oct-18	1,345	78.4%	1.5%	8.0%	1.2%	3.9%	7.0%
	Nov-18	1,107	73.8%	1.4%	9.5%	1.5%	4.3%	9.5%
	Dec-18	1,179	68.7%	1.7%	10.9%	2.7%	5.1%	10.9%
2019	Jan-19	1,373	74.3%	1.7%	8.4%	1.6%	3.8%	10.3%
	Feb-19	1,096	77.5%	0.9%	7.9%	2.2%	2.8%	8.7%
	Mar-19	1,292	72.4%	1.2%	10.4%	1.5%	4.4%	10.1%
	Apr-19	1,299	76.9%	1.5%	7.5%	2.8%	3.8%	7.4%
	May-19	1,312	80.0%	1.1%	7.9%	1.8%	3.2%	6.1%
	Jun-19	1,169	82.5%	1.4%	7.4%	0.7%	2.7%	5.3%
	Jul-19	1,322	81.3%	0.9%	7.1%	0.8%	4.5%	5.4%
	Aug-19	1,239	77.4%	1.9%	7.4%	0.7%	5.9%	6.6%
	Sep-19	1,157	77.4%	1.4%	10.2%	1.0%	3.5%	6.4%
	Oct-19	1,239	72.4%	1.5%	11.5%	1.5%	4.3%	8.9%
	Nov-19	942	72.0%	1.3%	11.7%	1.8%	4.8%	8.5%

Note: Data includes all referrals – accepted and rejected

*Other Community Sources includes the Department of Homeless Services, Family Court, FAP, Hospitals and Medical facilities, the NYC Housing Authority, Probation, and Sponsor Agencies.