

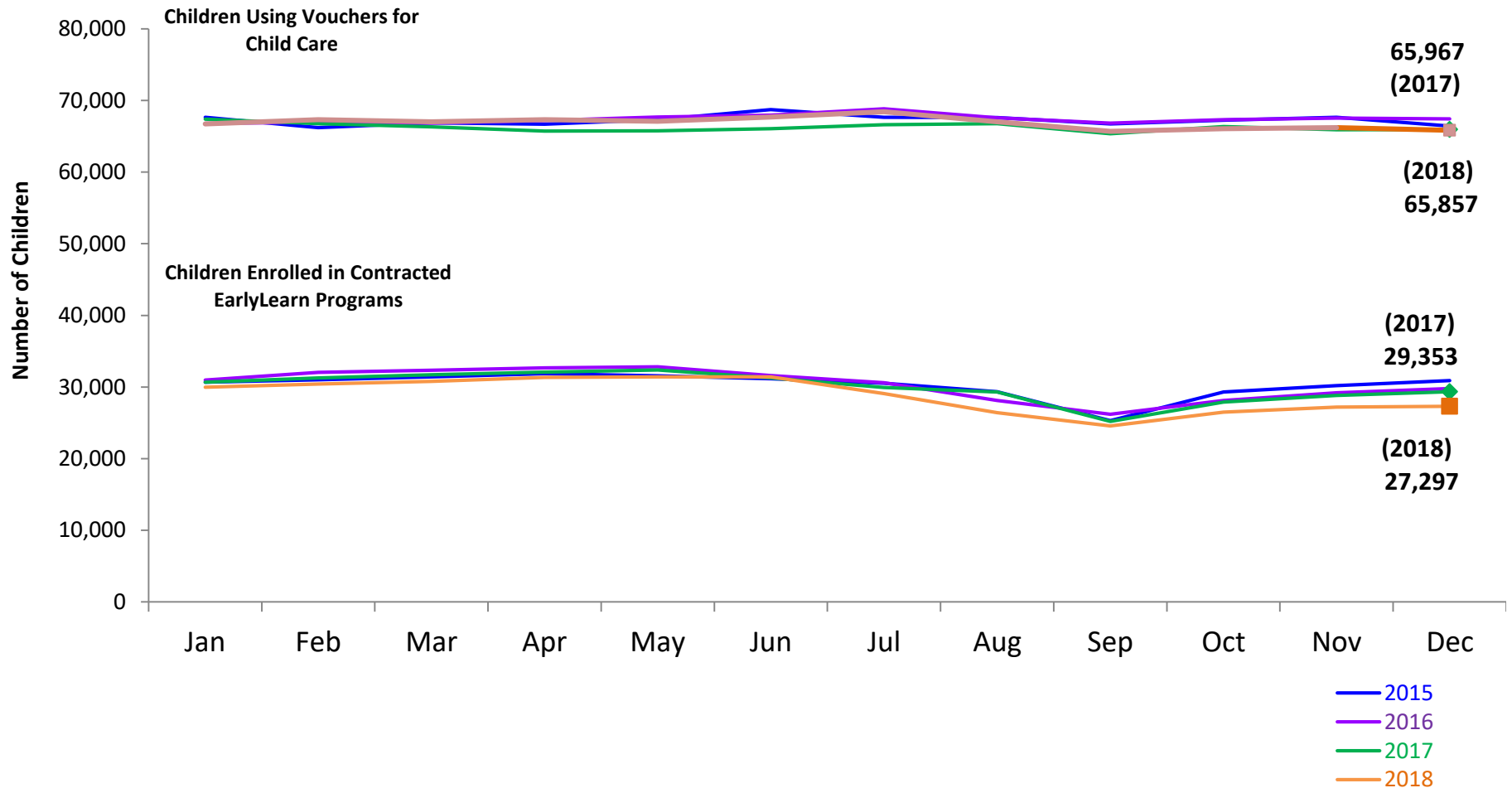
FLASH

monthly indicator

REPORT

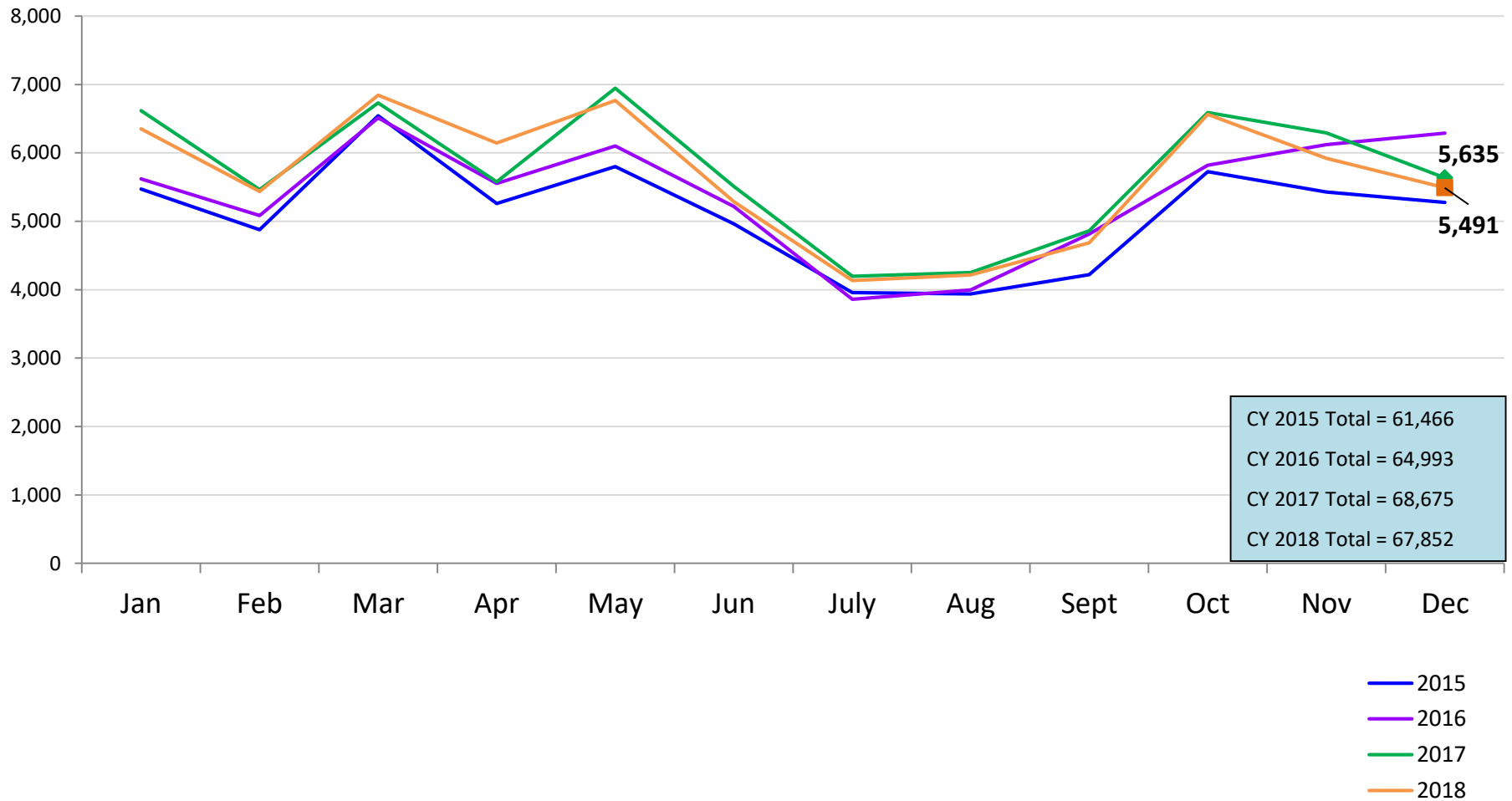
January 2019

Children Enrolled in Contracted EarlyLearn Programs and Children Using Vouchers for Child Care January 2015 – December 2018 (End of Month)



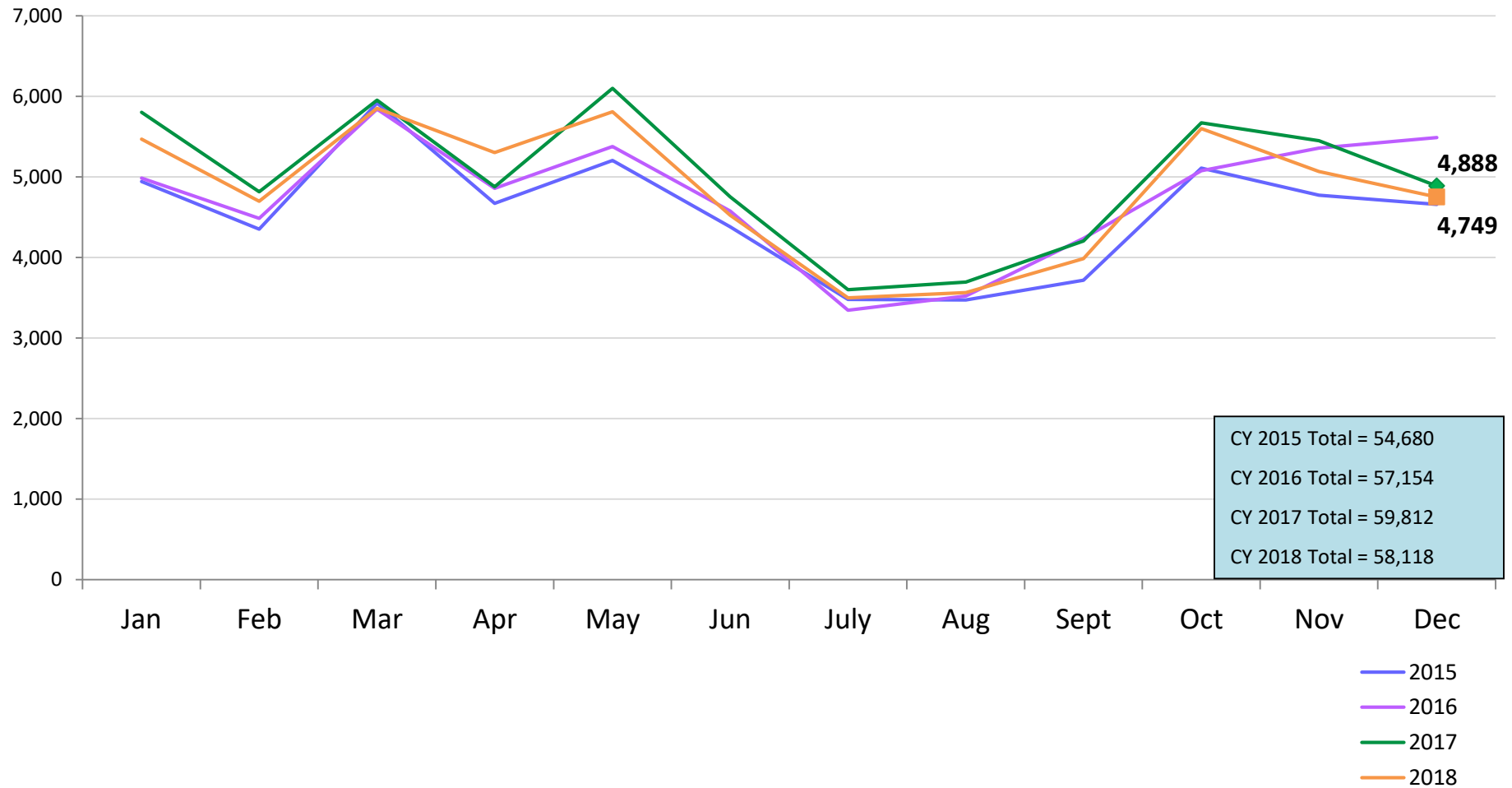
SCR Intakes

January 2015 – December 2018



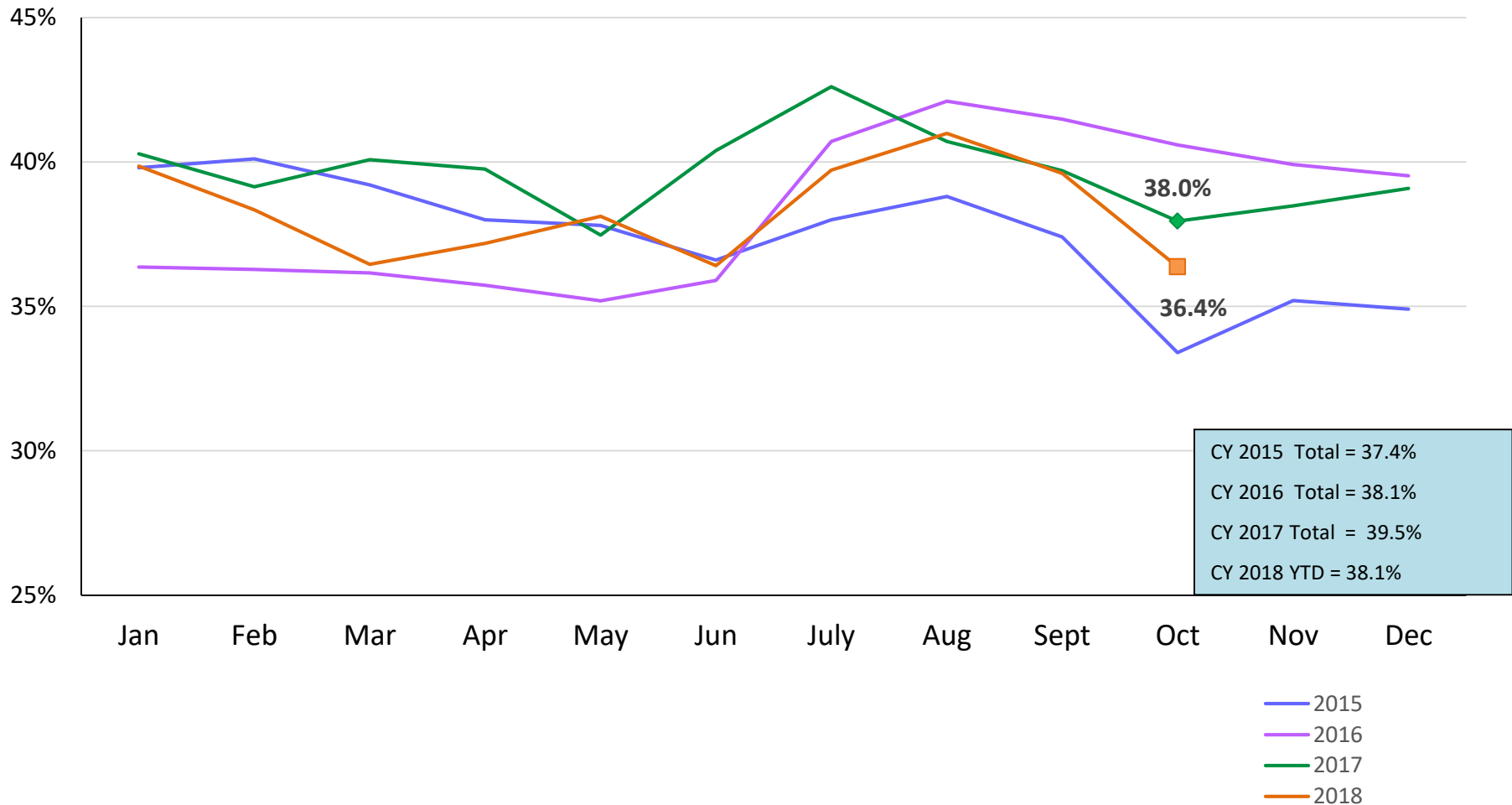
SCR Consolidated Investigations

January 2015 – December 2018



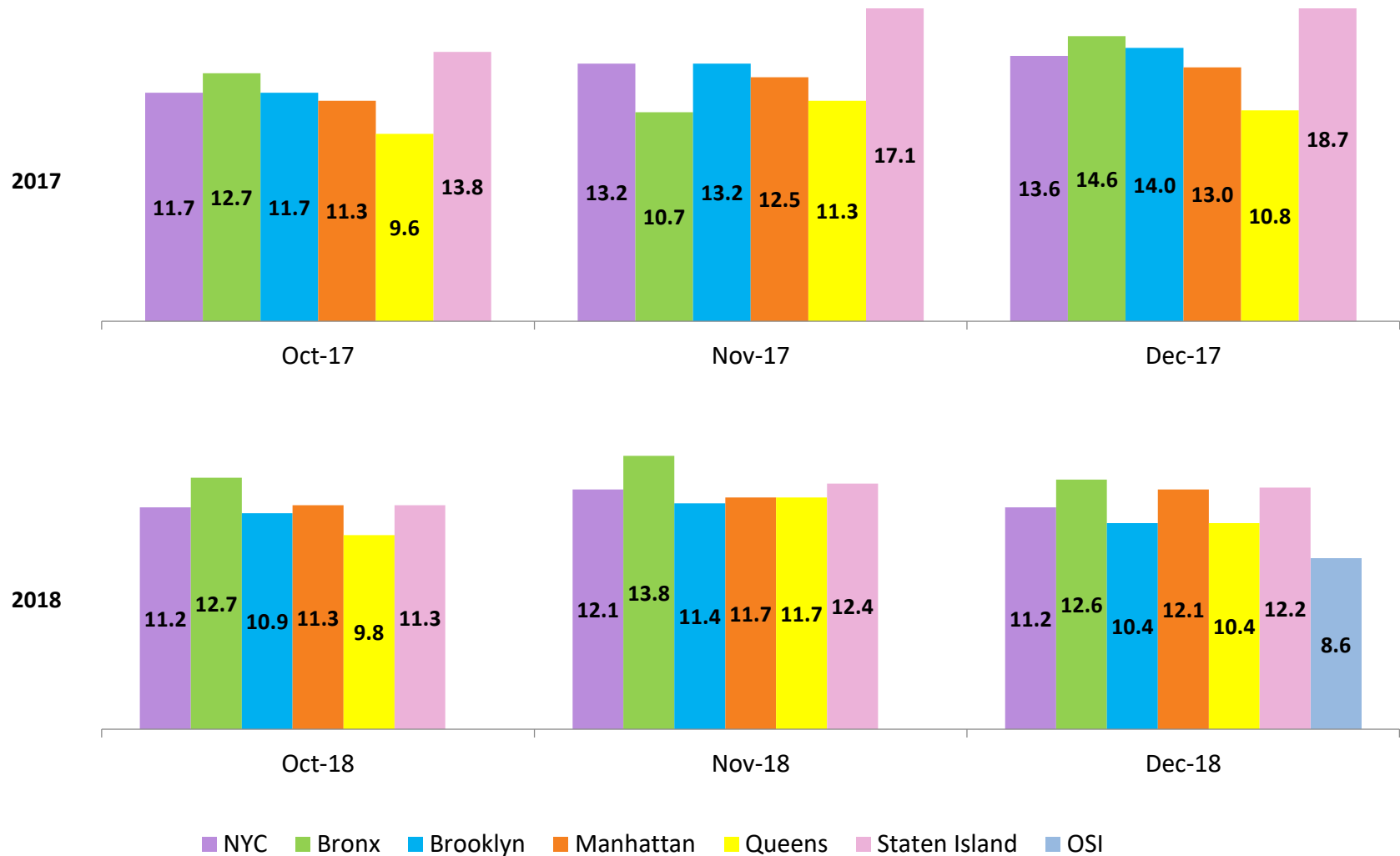
Percent of Investigations that Found Some Credible Evidence of Abuse or Neglect

January 2015 – October 2018



Average Child Protection Caseload*

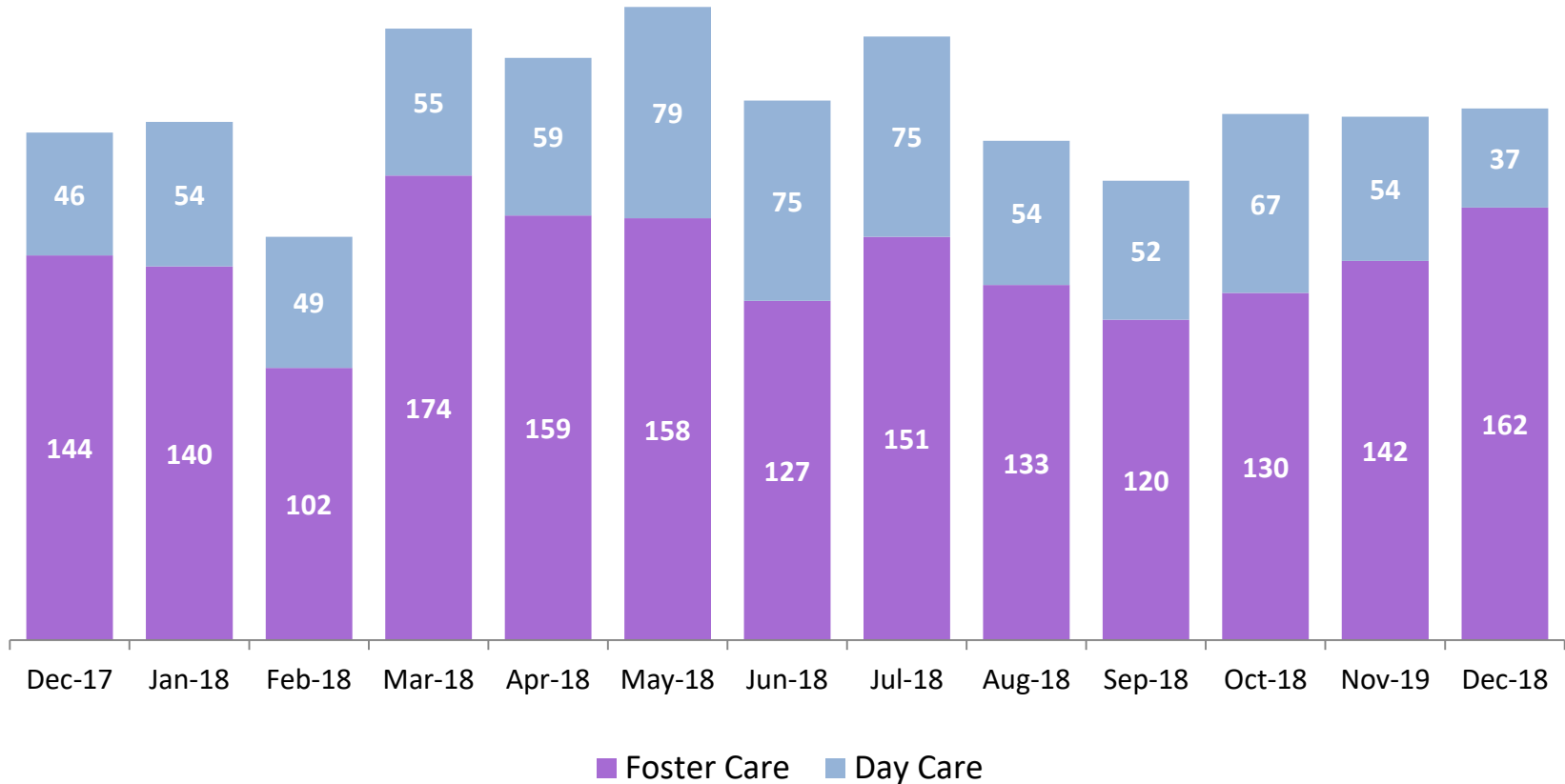
October – December 2017 and October – December 2018



*Prior to December 2018 caseloads are of Protective/Diagnostic Unit (Child Protection, School Based, Sex Abuse and Hospital Units) caseworkers only. Beginning December 2018, all caseload carrying Child Protection Specialists (CPS) in investigative and Family Assessment Response Units are included. Includes CPS in Primary and Case Manager roles only.

OSI Foster Care and Day Care* Investigations

December 2017 – December 2018

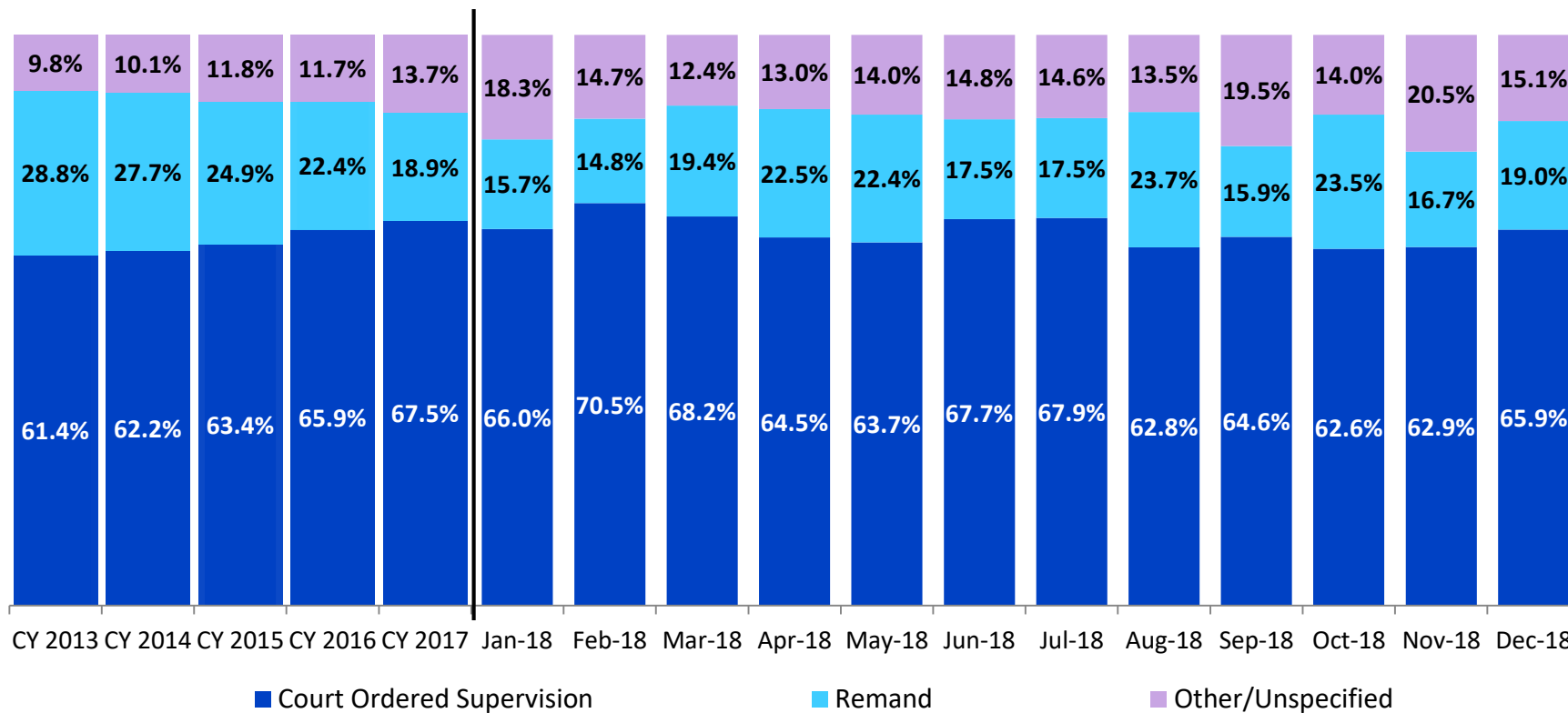


	Dec 2017	Jan 2018	Feb 2018	Mar 2018	Apr 2018	May 2018	Jun 2018	Jul 2018	Aug 2018	Sep 2018	Oct 2018	Nov 2018	Dec 2018
Number of Investigations	190	194	151	229	218	237	202	226	187	172	197	196	199

*Day Care investigations include alleged abuse or maltreatment of children perpetrated by someone who cares for children in a setting that is not the child's familial home and that requires state or local government approval and is subject to state laws, regulations, and oversight. This includes, but is not limited to, ACS Early Care and 7 Education programs.

Article 10 Filings and Initial Hearing Outcomes, Children

CY 2013 – December 2018

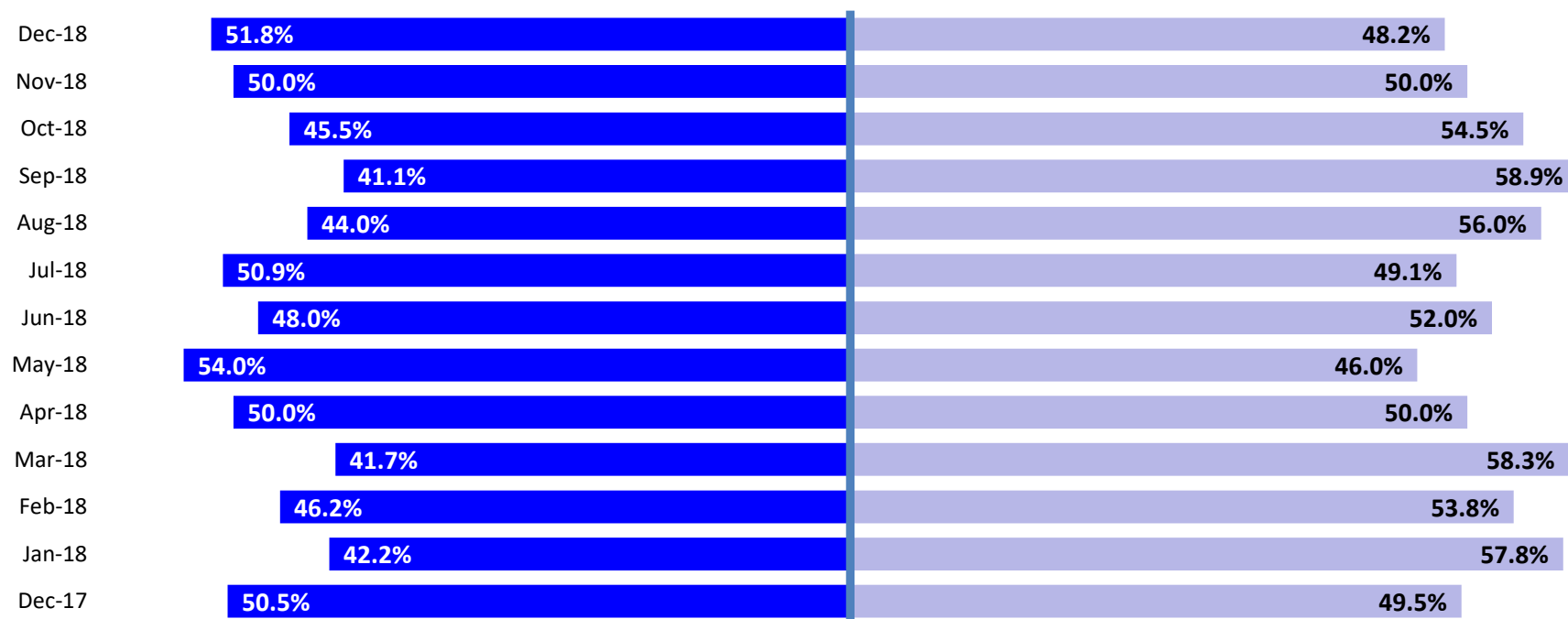


	CY 2013	CY 2014	CY 2015	CY 2016	CY 2017	Jan 2018	Feb 2018	Mar 2018	Apr 2018	May 2018	Jun 2018	Jul 2018	Aug 2018	Sep 2018	Oct 2018	Nov 2018	Dec 2018
Children with Article 10 Filings	9,318	9,900	9,958	10,973	15,975	1,311	1,254	1,185	1,051	1,051	1,141	991	1,095	949	1,266	1,007	1,018

Note: The category "Other/Unspecified" includes released with no supervision, no order issued and no outcome specified.

Remands Approved at Initial Article 10 Hearing by Removal Status

December 2017 – December 2018

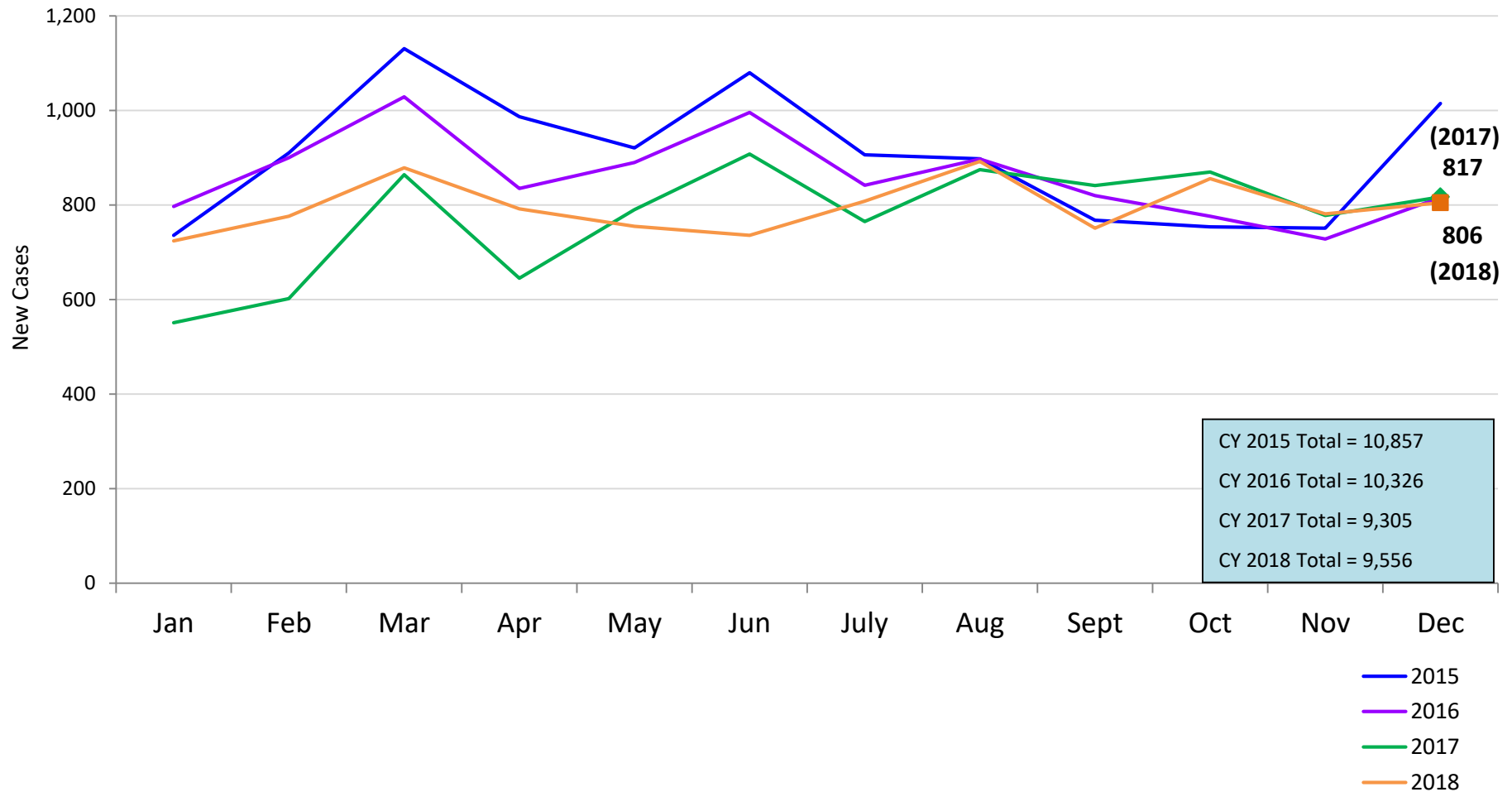


■ Pre-Filing Emergency Removals (court approved at initial hearing) ■ Post-Filing Removals (court ordered at initial hearing)

	Dec 2017	Jan 2018	Feb 2018	Mar 2018	Apr 2018	May 2018	Jun 2018	Jul 2018	Aug 2018	Sep 2018	Oct 2018	Nov 2018	Dec 2018
Children Remanded	210	206	186	230	236	235	200	173	259	151	297	168	193

New Child Welfare Prevention Cases*

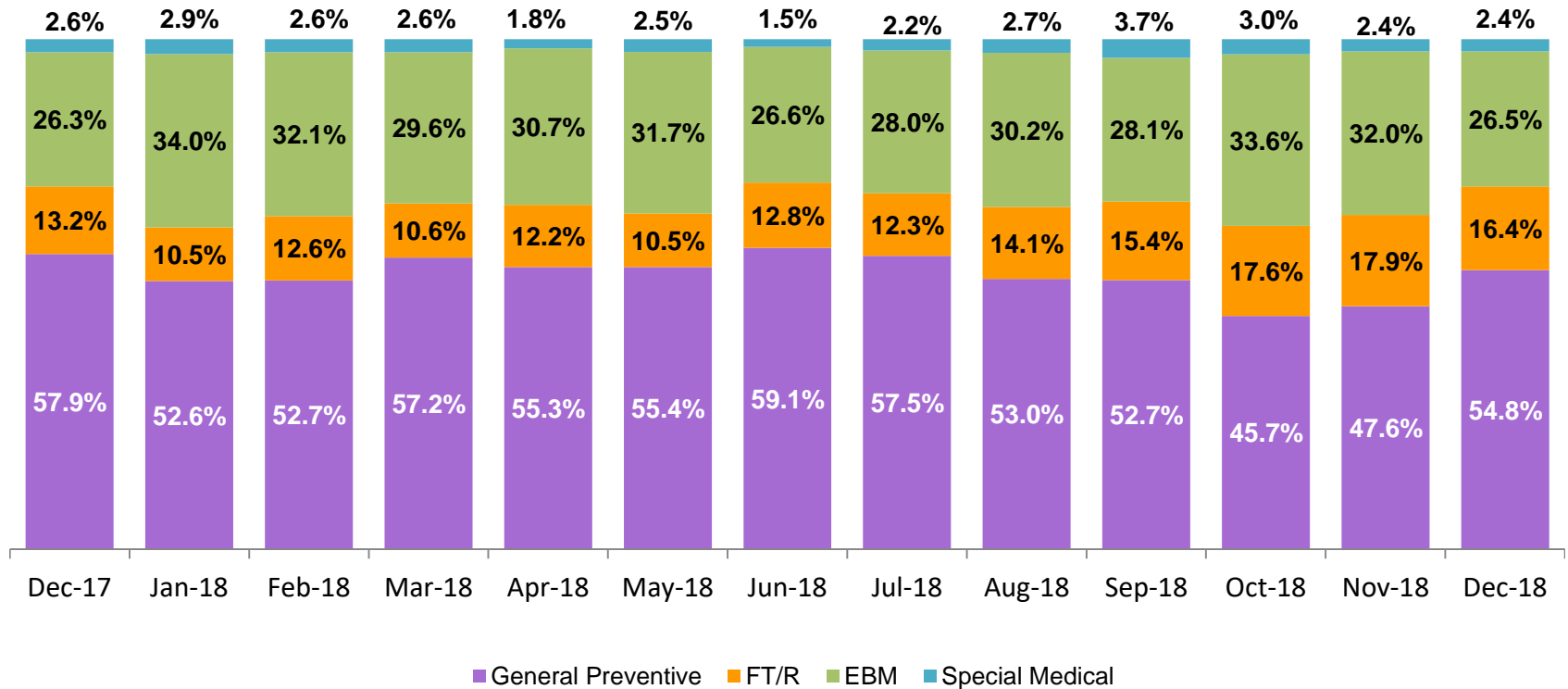
January 2015 – December 2018



* New prevention cases do not include cases transferred from one preventive program to another. See Pages 33 and 34 of the Appendix for supporting data.

New Child Welfare Prevention Cases by Program Type *

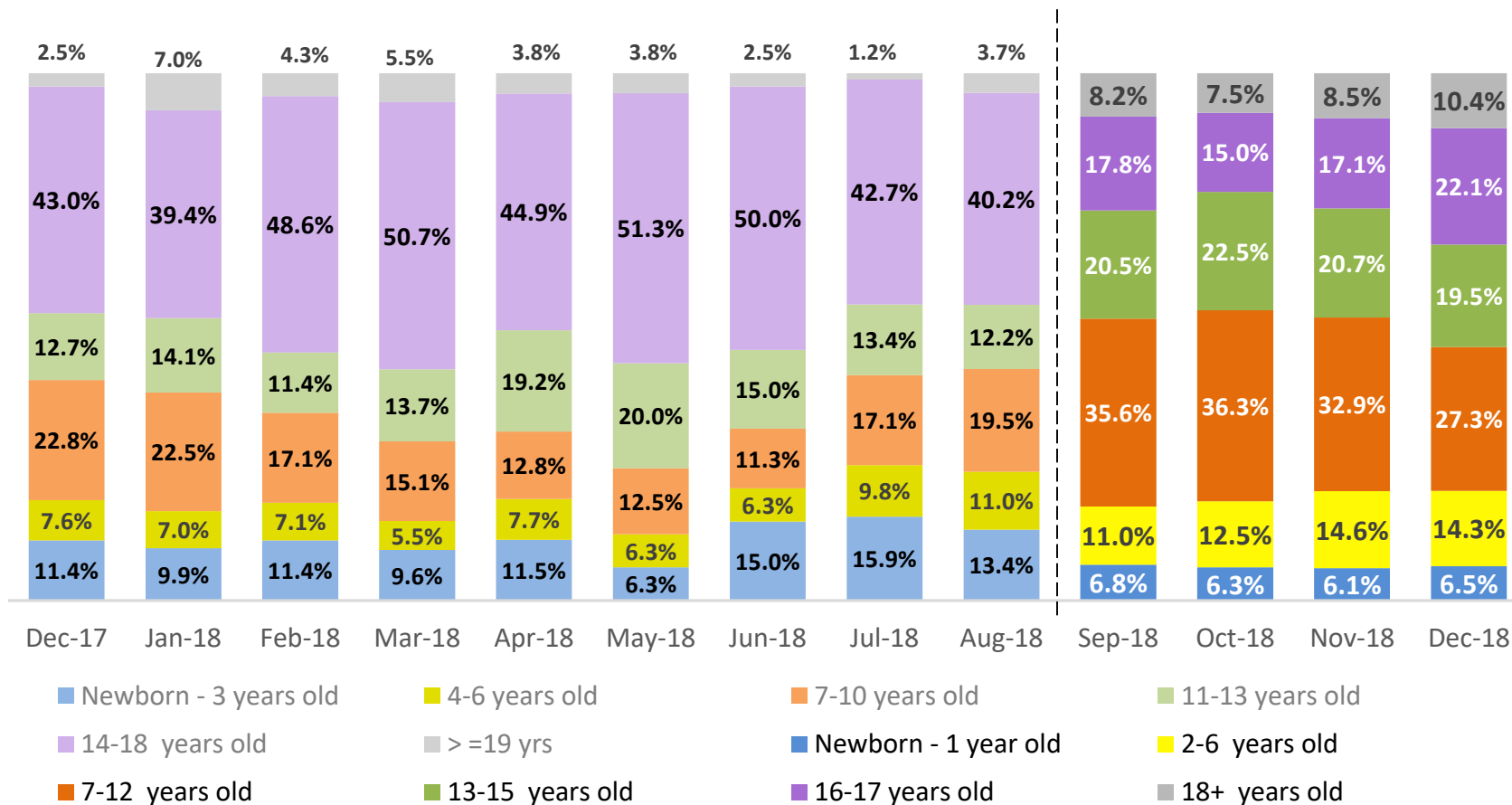
December 2017 – December 2018



	Dec 2017	Jan 2018	Feb 2018	Mar 2018	Apr 2018	May 2018	Jun 2018	Jul 2018	Aug 2018	Sep 2018	Oct 2018	Nov 2018	Dec 2018
Number of New Preventive Cases	817	724	776	879	792	755	736	808	892	751	856	781	806

* New prevention cases exclude cases transferred from one prevention program to another.

Average Daily Children's Center Population December 2017 – December 2018

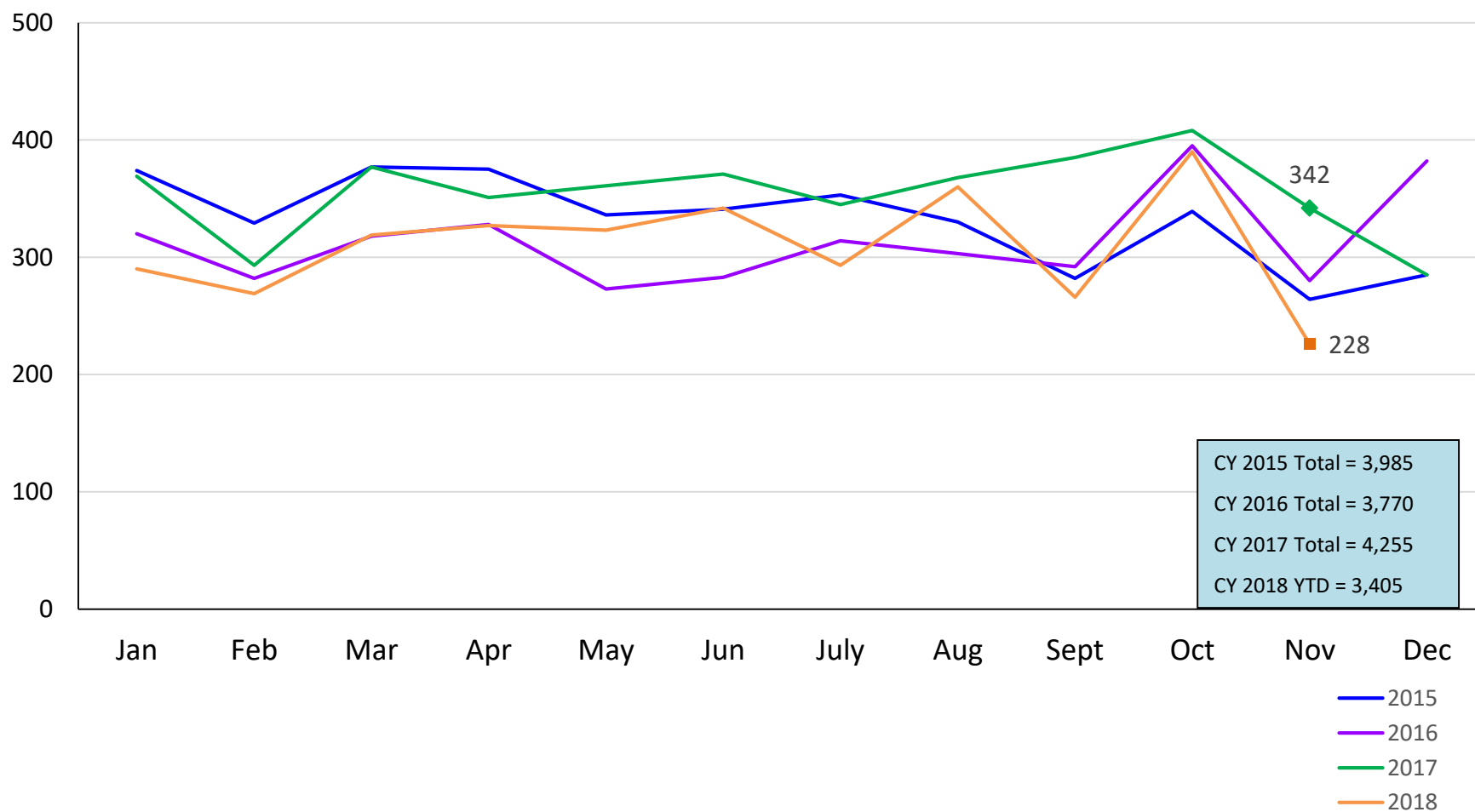


	Dec 2017	Jan 2018	Feb 2018	Mar 2018	Apr 2018	May 2018	Jun 2018	Jul 2018	Aug 2018*	Sep 2018	Oct 2018	Nov 2018	Dec 2018
Average Number of Children	79	71	70	73	78	80	80	82	82	73	80	82	77

Notes: 1) August 2018 includes data from August 1st to August 28th. 2) New age groups were introduced in September 2018.

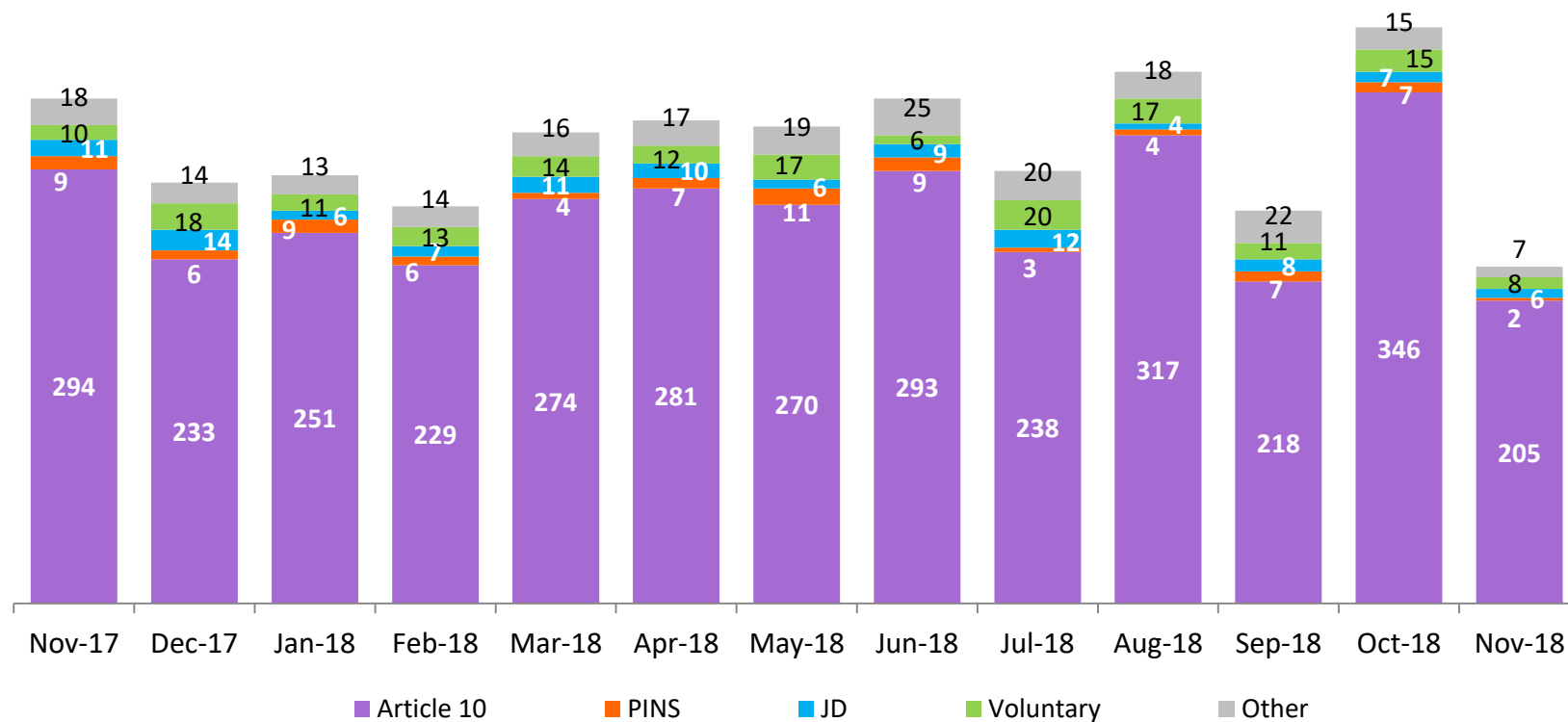
New Monthly Placements of Children into Foster Care

January 2015 – November 2018



Reason for New Placements of Children into Foster Care

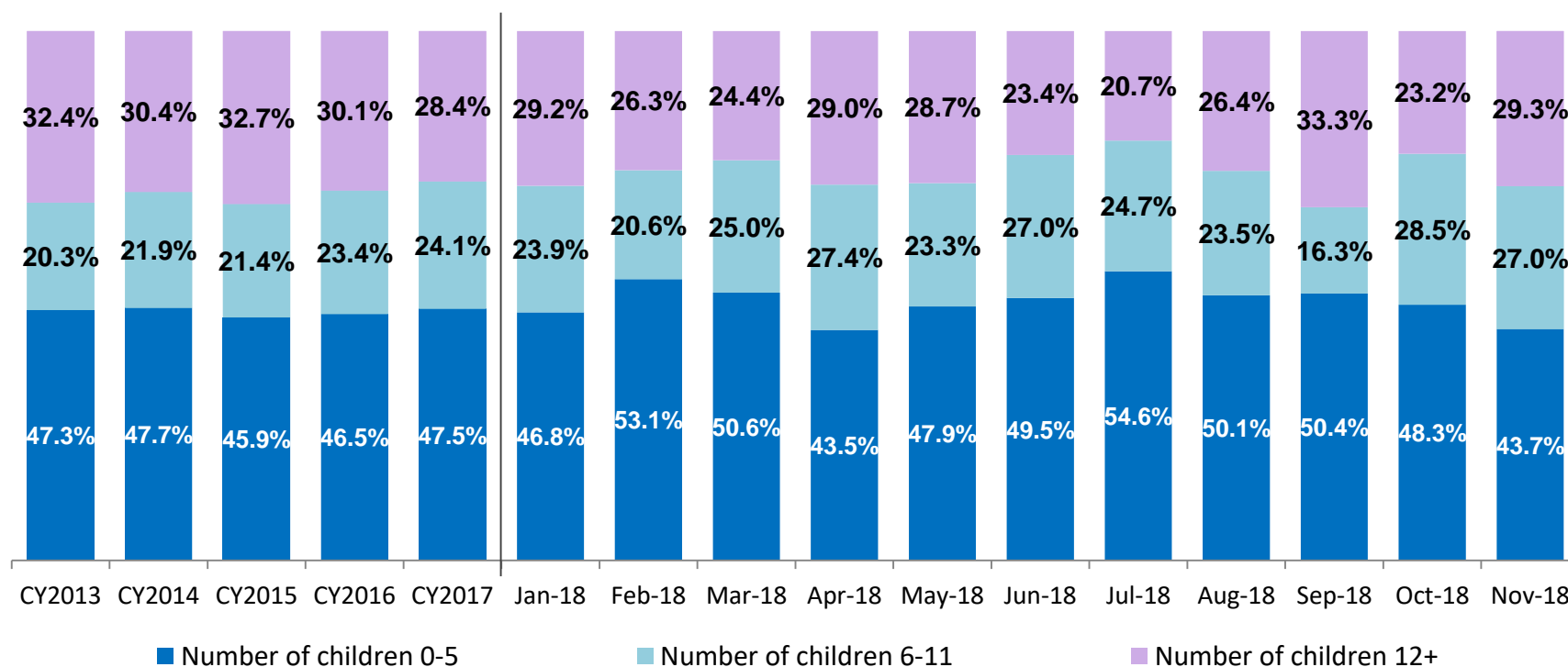
November 2017 – November 2018



	Nov 2017	Dec 2017	Jan 2018	Feb 2018	Mar 2018	Apr 2018	May 2018	Jun 2018	Jul 2018	Aug 2018	Sep 2018	Oct 2018	Nov 2018
Number of Placements	342	285	290	269	319	327	323	342	293	360	266	390	228

New Placements of Children into Foster Care* by Age

CY 2013 - November 2018

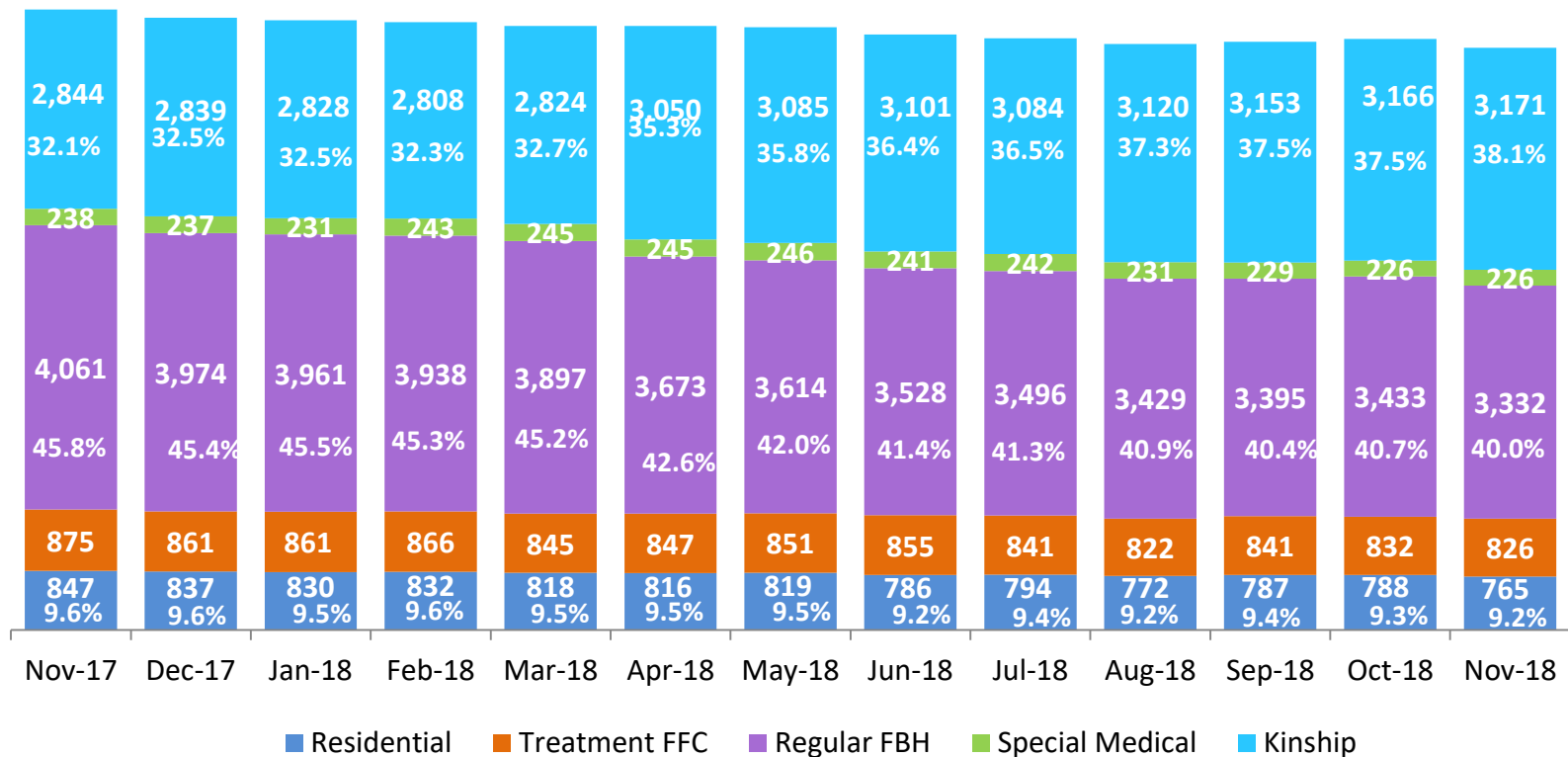


	CY 2013	CY 2014	CY 2015	CY 2016	CY 2017	Jan 2018	Feb 2018	Mar 2018	Apr 2018	May 2018	Jun 2018	Jul 2018	Aug 2018	Sep 2018	Oct 2018	Nov 2018
Number of Placements	4,283	4,160	3,760	3,557	4,097	284	262	308	317	317	333	271	341	258	383	222

*Excludes CTH placements.

Children in Foster Care *

November 2017 – November 2018 (end of month)

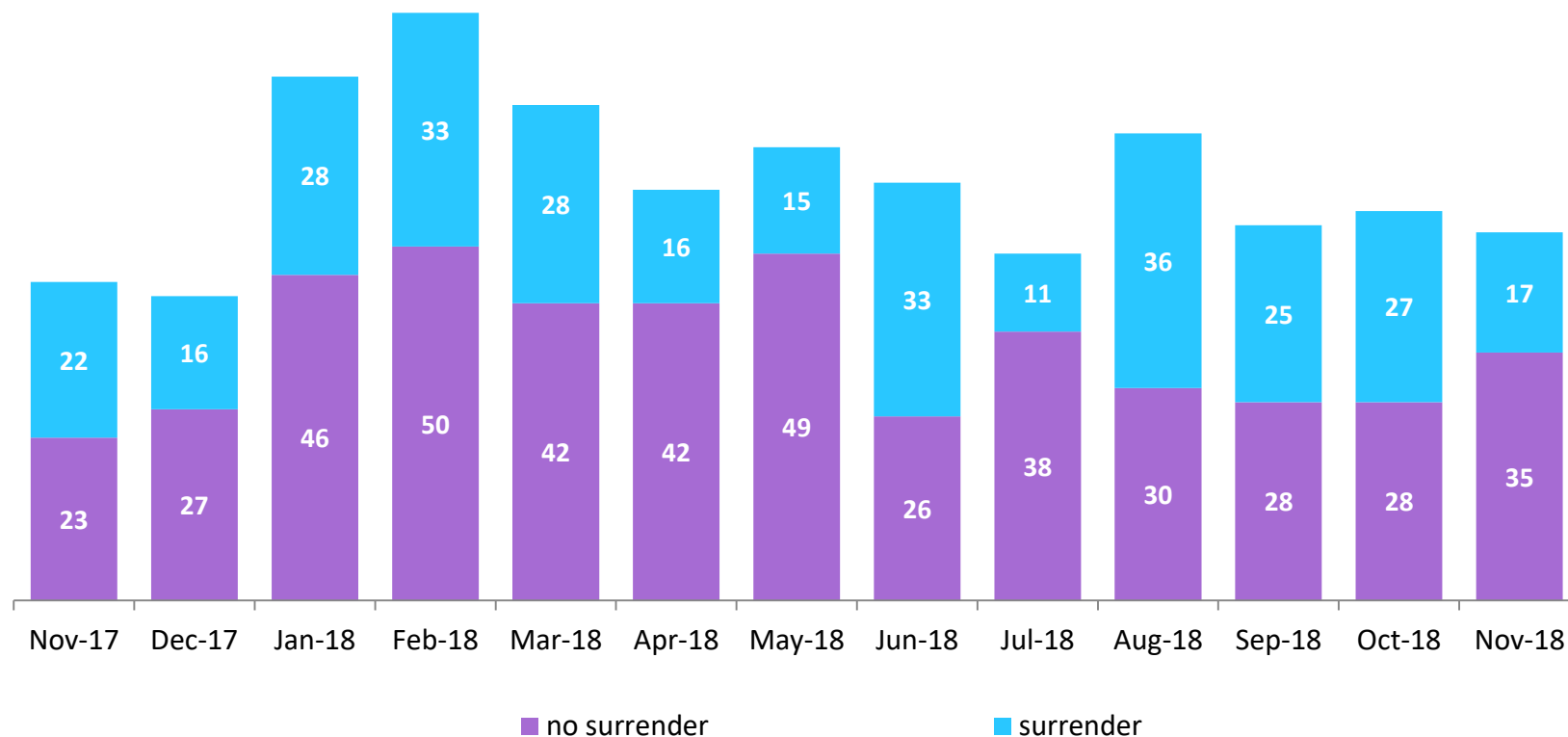


	Nov 2017	Dec 2017	Jan 2018	Feb 2018	Mar 2018	Apr 2018	May 2018	Jun 2018	Jul 2018	Aug 2018	Sep 2018	Oct 2018	Nov 2018
Number in Foster Care	8,865	8,747	8,711	8,687	8,629	8,631	8,615	8,512	8,458	8,374	8,406	8,444	8,320

*Excludes CTH placements and includes children in 24 hour care and approximately 200 young children who are living in foster homes or residential care facilities with their mothers who are in foster care (8D children).

Children Freed for Adoption, Surrender by at Least One Parent

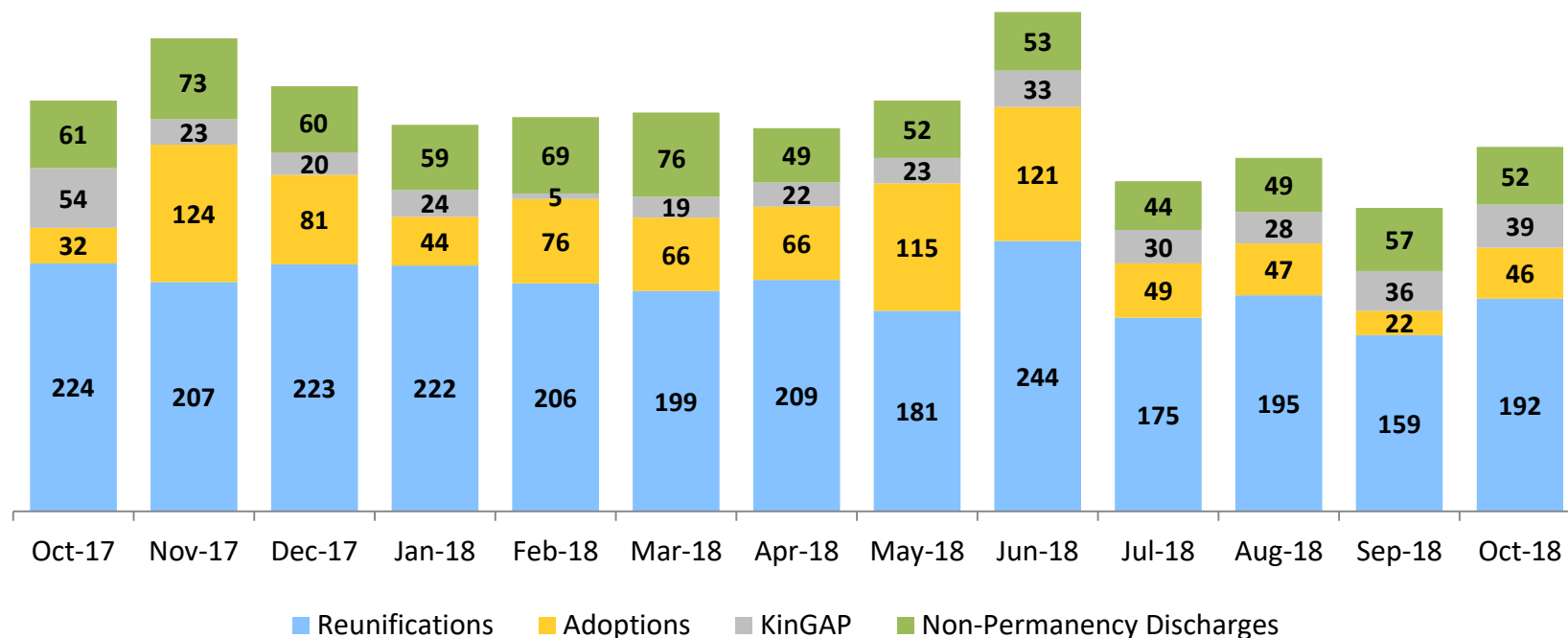
November 2017 – November 2018



	Nov 2017	Dec 2017	Jan 2018	Feb 2018	Mar 2018	Apr 2018	May 2018	Jun 2018	Jul 2018	Aug 2018	Sep 2018	Oct 2018	Nov 2018
Number Freed for Adoption	45	43	74	83	70	58	64	59	49	66	53	55	52

Permanency and Non-Permanency* Discharges from Foster Care**

October 2017 – October 2018



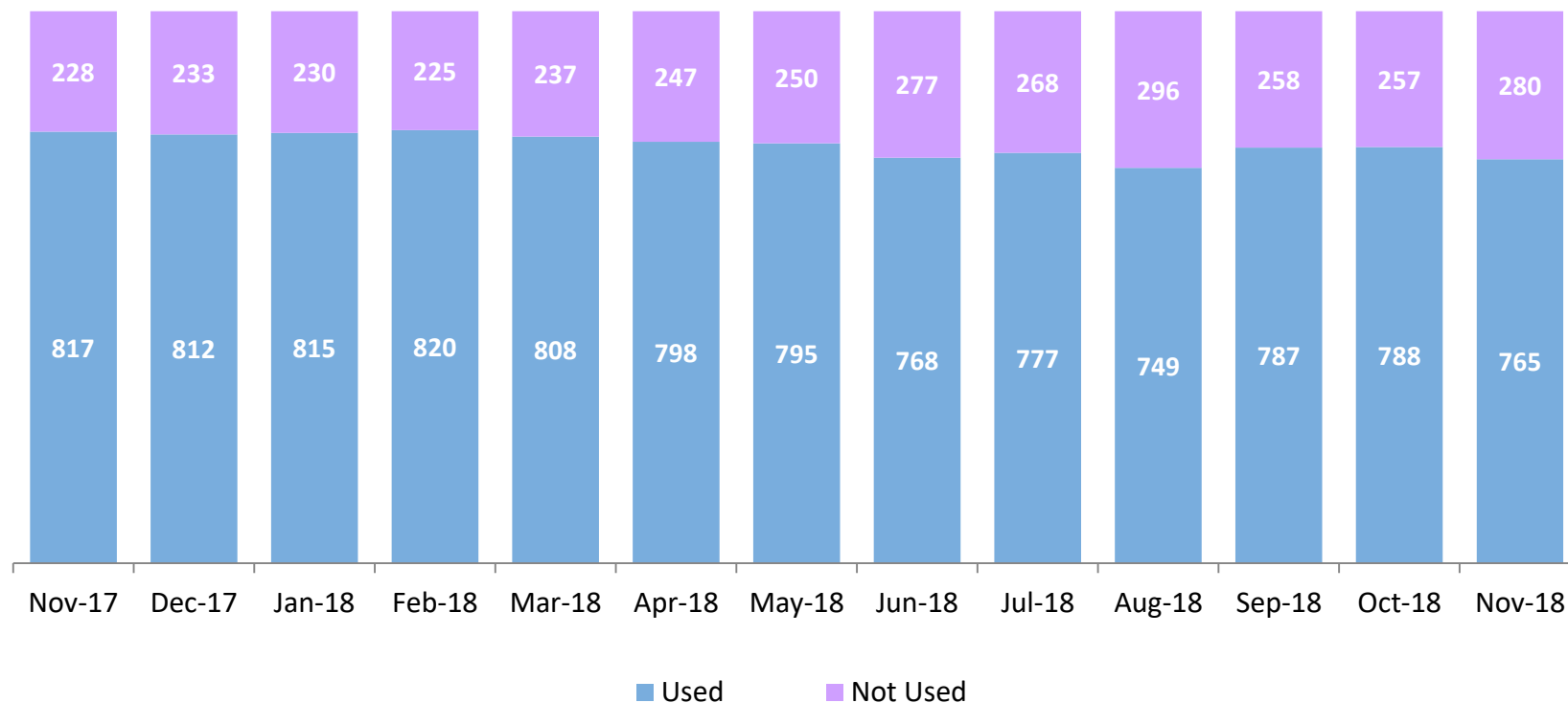
	Oct 2017	Nov 2017	Dec 2017	Jan 2018	Feb 2018	Mar 2018	Apr 2018	May 2018	Jun 2018	Jul 2018	Aug 2018	Sep 2018	Oct 2018
Number of Discharges	371	427	384	349	356	360	346	371	451	298	319	274	329

*The methodology for non-permanency discharges was changed September 2018. This statistic is not comparable to prior reports. Non-permanency discharges include AWOL, APPLA (youth 18-20 years old discharged to self and youth who reached 21 while in care), and other discharge destinations such as psychiatric institutions and correctional facilities and discharges with unspecified destinations.

**Excludes discharges of youth from CTH placements.

Residential Care Capacity and Utilization

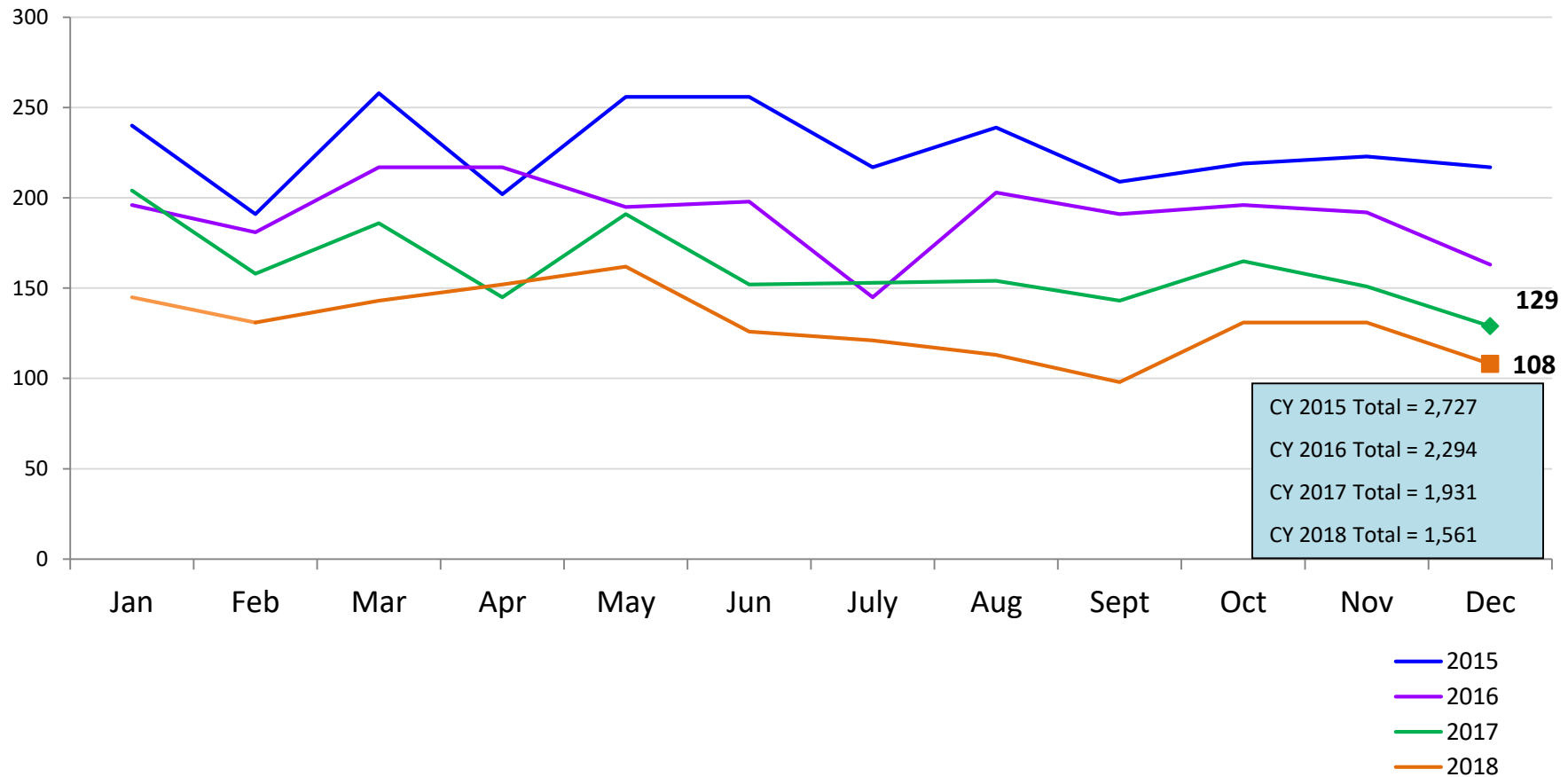
November 2017 – November 2018



	Nov 2017	Dec 2017	Jan 2018	Feb 2018	Mar 2018	Apr 2018	May 2018	Jun 2018	Jul 2018	Aug 2018	Sep 2018	Oct 2018	Nov 2018
Capacity	1,045	1,045	1,045	1,045	1,045	1,045	1,045	1,045	1,045	1,045	1,045	1,045	1,045

Total Monthly Admissions to Detention

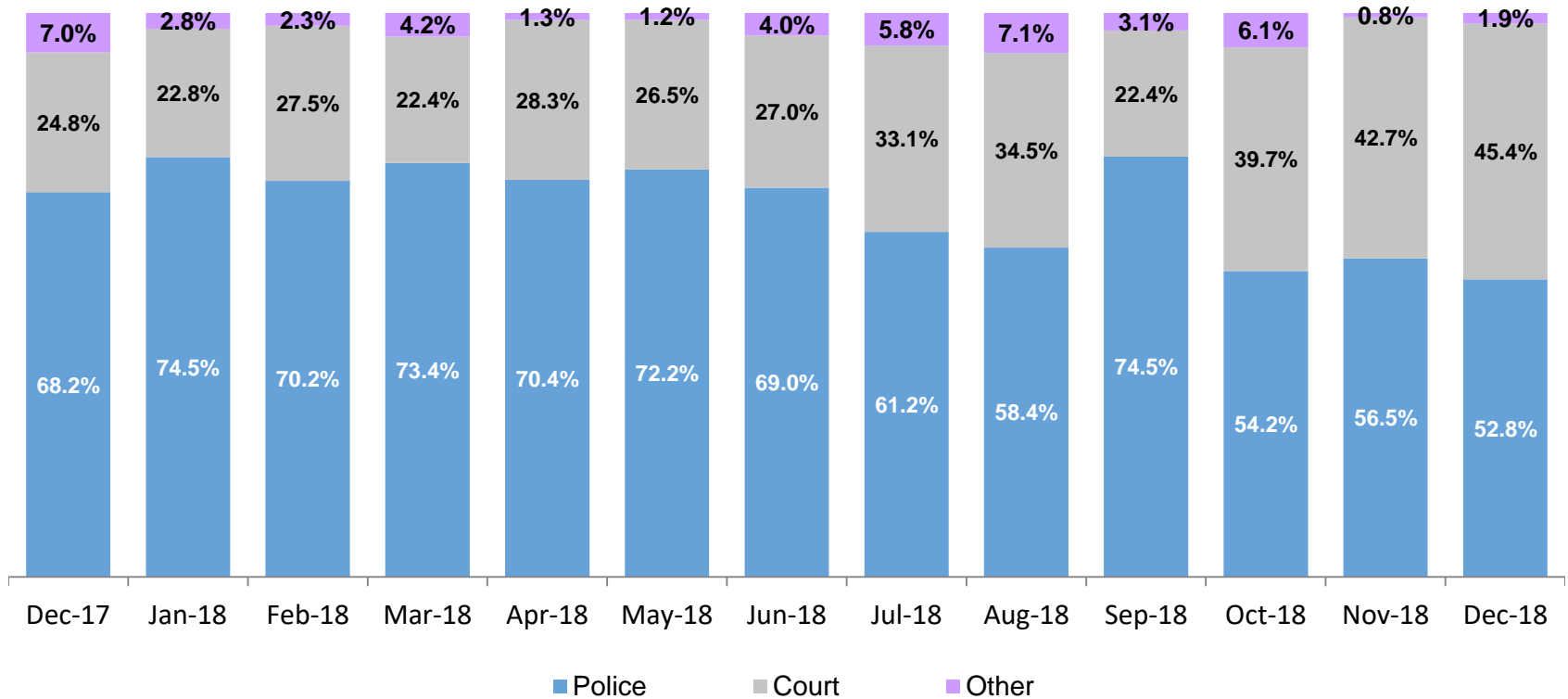
January 2015 – December 2018*



*Beginning in October 2018 admissions to Horizon Juvenile Facility are not included in the ACS detention statistics.

Admit Authority, Detention Admissions

December 2017 – December 2018*



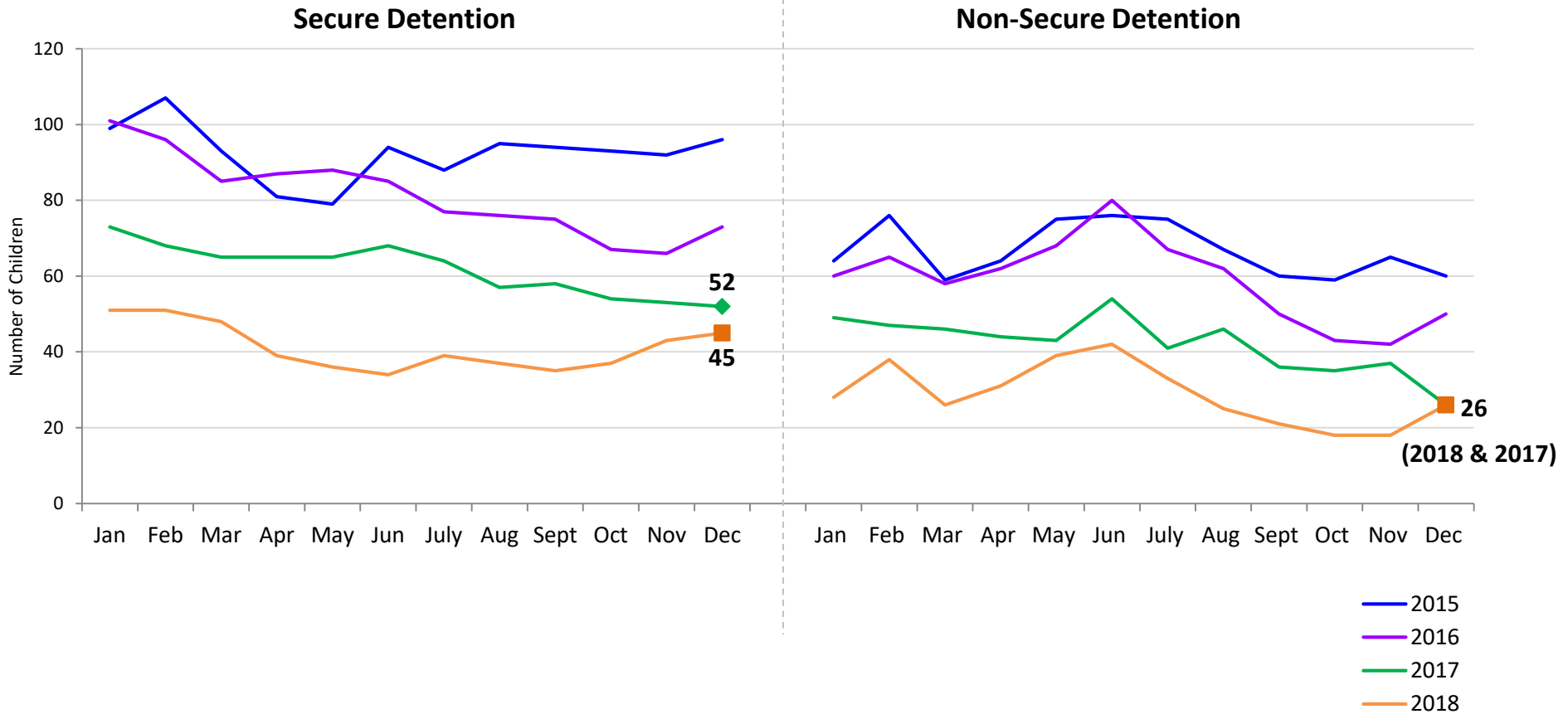
	Dec 2017	Jan 2018	Feb 2018	Mar 2018	Apr 2018	May 2018	Jun 2018	Jul 2018	Aug 2018	Sep 2018	Oct 2018	Nov 2018	Dec 2018
Number of Admissions	129	145	131	143	152	162	126	121	113	98	131	131	108

Note: Other Admit Authority includes the Sheriff Department, Department of Corrections and ACS.

*Beginning in October 2018 admissions to Horizon Juvenile Facility are not included in the ACS detention statistics.

Monthly Average Daily Population

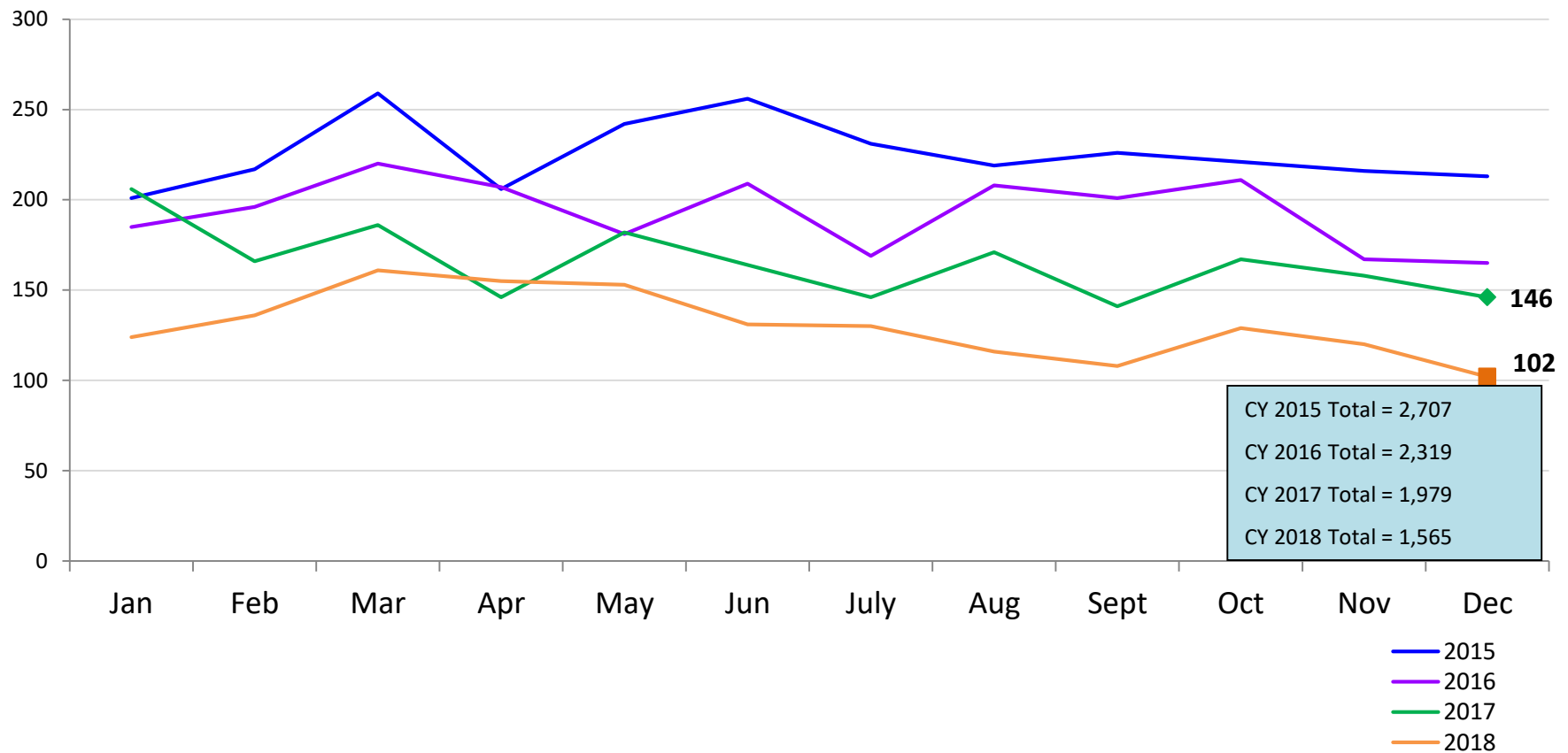
January 2015 – December 2018*



*Beginning in October 2018 youth in the Horizon Juvenile Facility are not included in the ACS detention statistics.

Total Monthly Releases from Detention

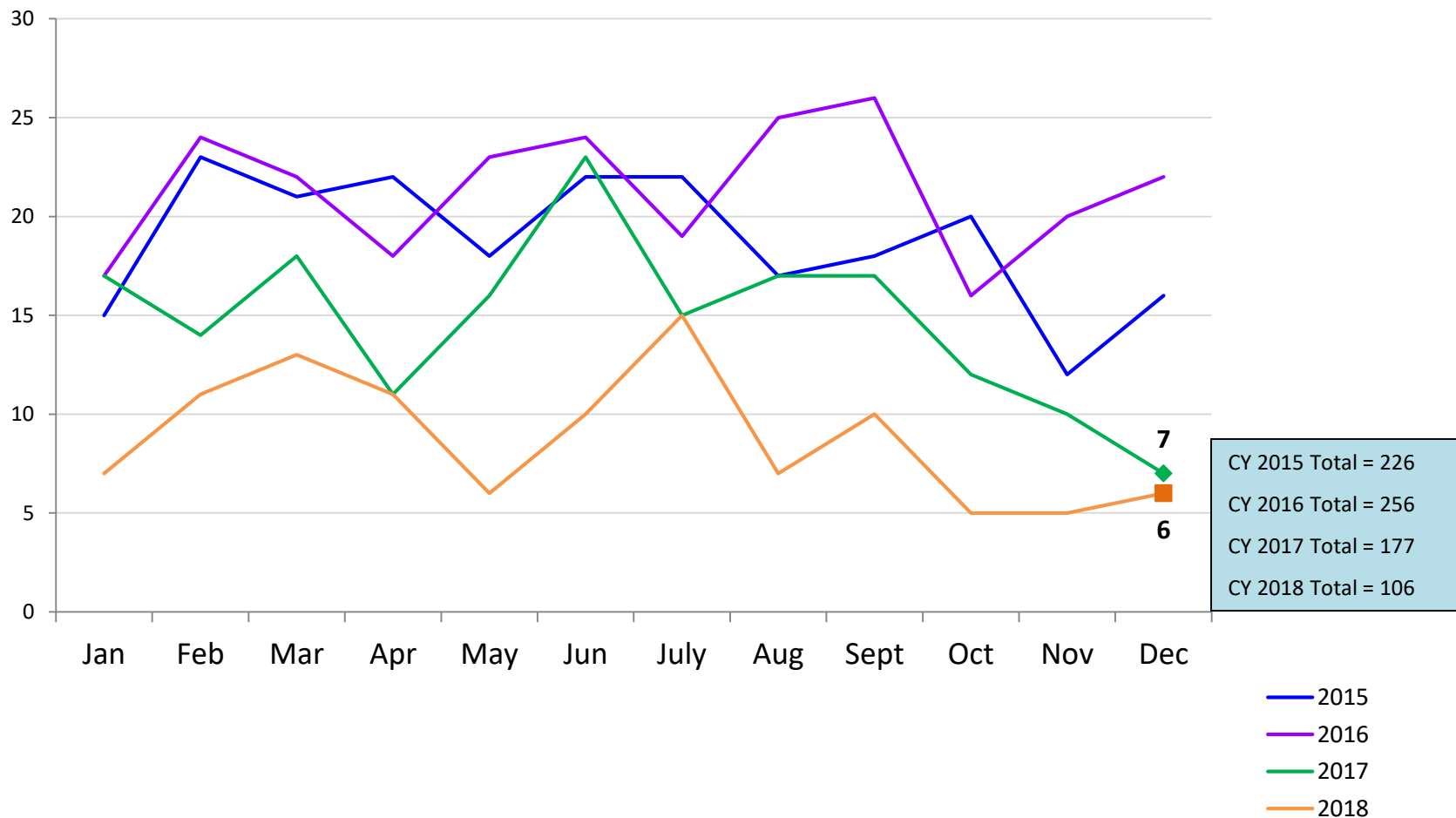
January 2015 – December 2018*



*Beginning in October 2018 releases from the Horizon Juvenile Facility are not included in the ACS detention statistics.

Close to Home Admissions*

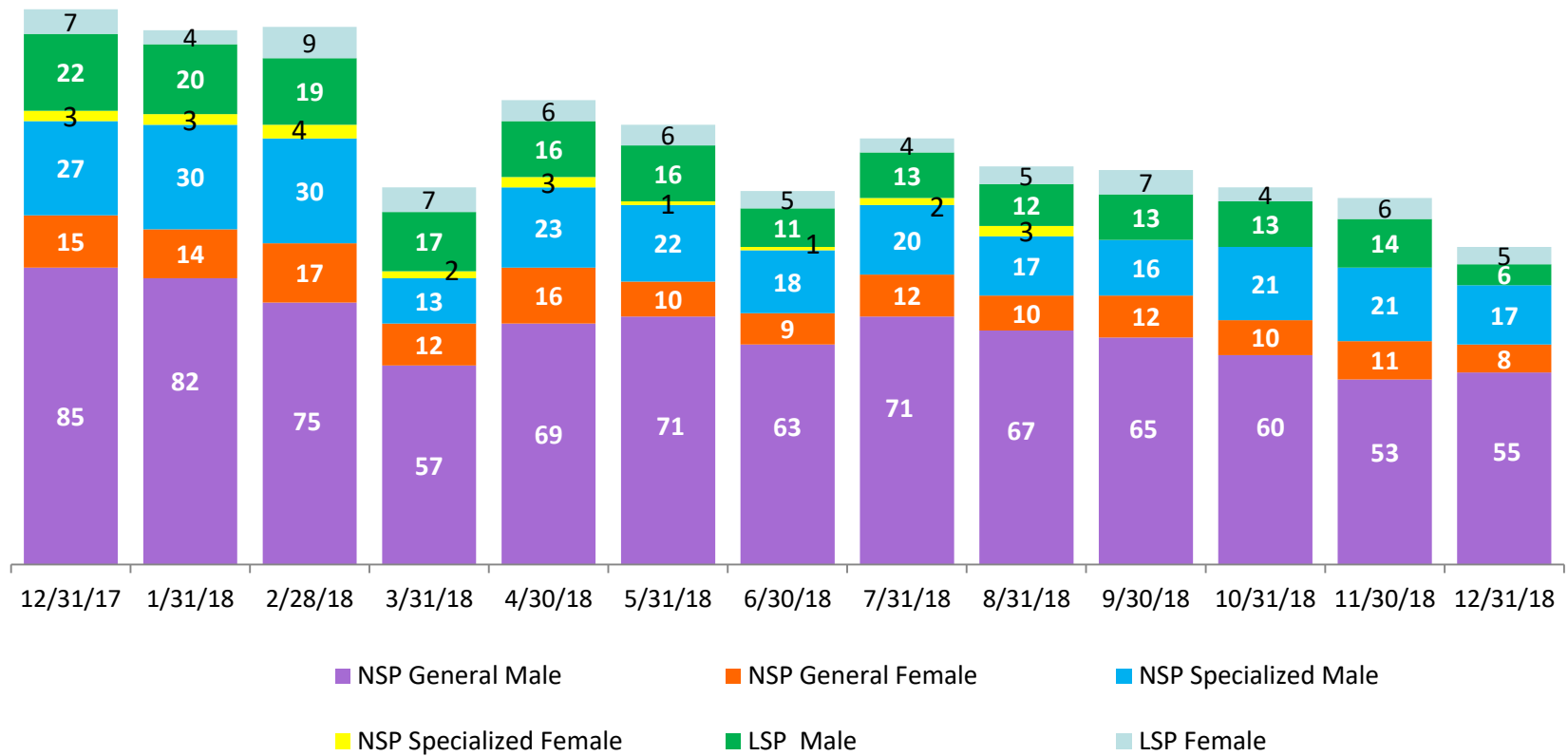
January 2015 – December 2018



*Beginning in December 2015 Close to Home admissions include LSP as well as NSP.

CTH Placement, in 24-hour Care

December 2017 – December 2018 (end of month)

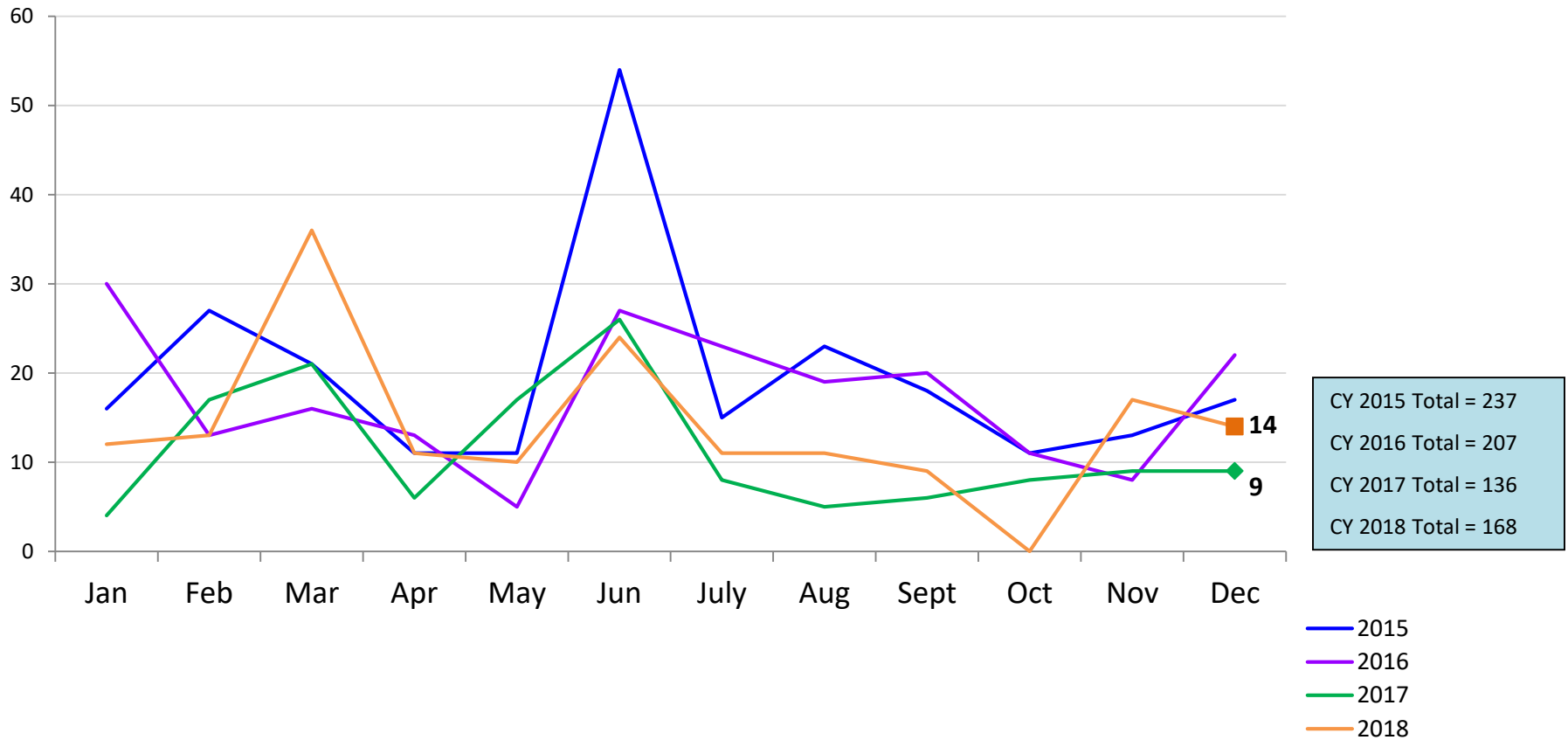


Number in Placement													
	12/31/17	1/31/18	2/28/18	3/31/18	4/30/18	5/31/18	6/30/18	7/31/18	8/31/18	9/30/18	10/31/18	11/30/18	12/31/18
NSP	130	129	126	84	111	104	91	105	97	93	91	85	80
LSP	29	24	28	24	22	22	16	17	17	20	17	20	11

*NSP Other includes youth in child welfare and mother/child placements.

Releases from Close to Home Placement to Aftercare

January 2015 – December 2018



Appendix

Figure 1: SCR Intakes by Borough, OCTOBER 17 – DECEMBER 17 and OCTOBER 18 – DECEMBER 18

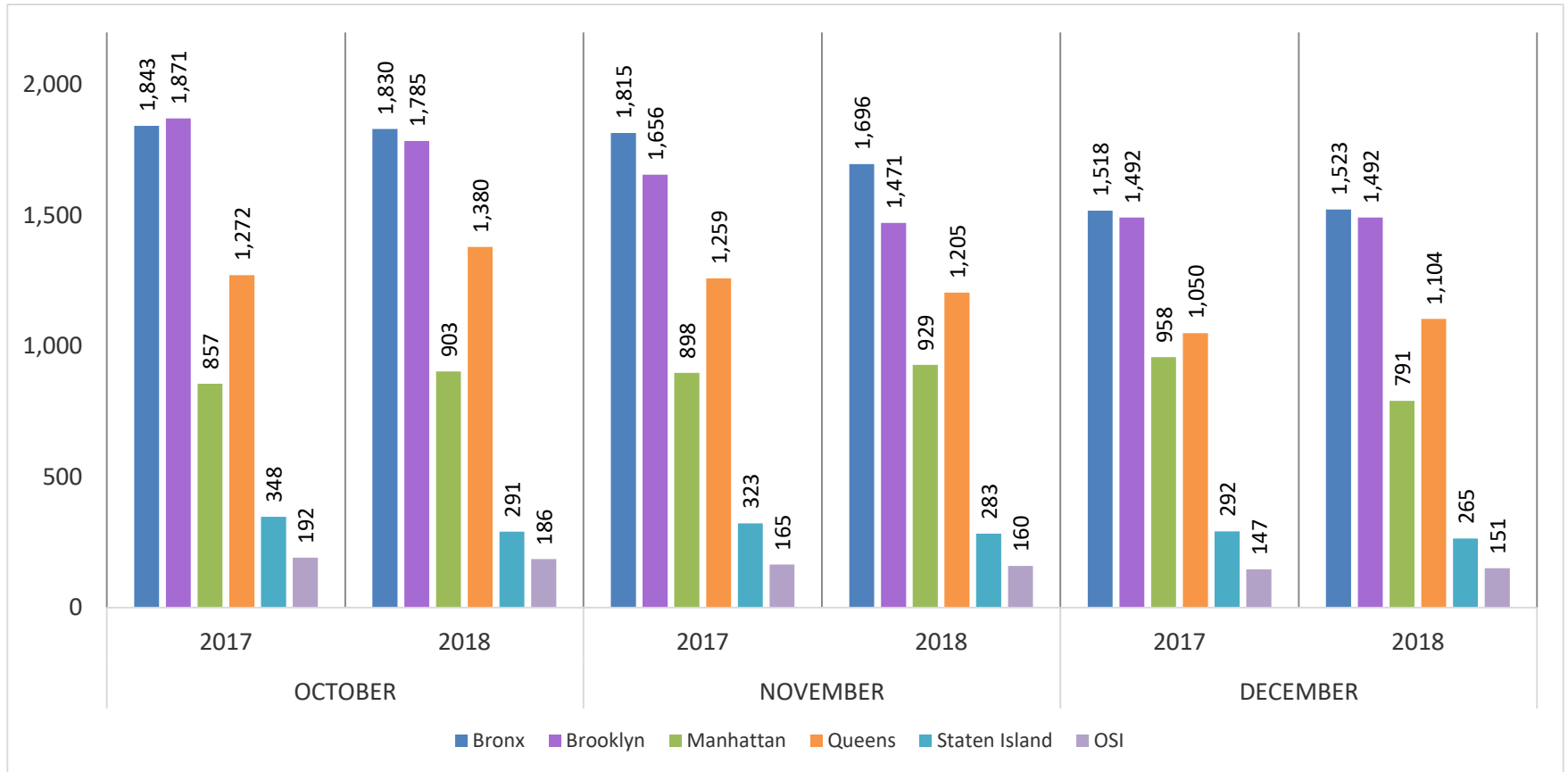


Table 1 - SCR Intake Changes by Borough, OCTOBER 17 – DECEMBER 17 and OCTOBER 18 – DECEMBER 18

Month	Year	Bronx	Brooklyn	Manhattan	Queens	Staten Island	OSI	Other	Total
OCTOBER	2017	1,843	1,871	857	1,272	348	192	208	6,591
	2018	1,830	1,785	903	1,380	291	186	188	6,564
	% Change	-0.7%	-4.6%	5.4%	8.5%	-16.4%	-3.1%	-9.6%	-0.4%
NOVEMBER	2017	1,815	1,656	898	1,259	323	165	176	6,292
	2018	1,696	1,471	929	1,205	283	160	178	5,922
	% Change	-6.6%	-11.2%	3.5%	-4.3%	-12.4%	-3.0%	1.1%	-5.9%
DECEMBER	2017	1,518	1,492	958	1,050	292	147	178	5,635
	2018	1,523	1,492	791	1,104	265	151	165	5,491
	% Change	0.3%	0.0%	-17.4%	5.1%	-9.2%	2.7%	-7.3%	-2.6%
Total	2017	5,176	5,019	2,713	3,581	963	504	562	18,518
	2018	5,049	4,748	2,623	3,689	839	497	531	17,977
	% Change	-2.5%	-5.4%	-3.3%	3.0%	-12.9%	-1.4%	-5.5%	-2.9%

Figure 2: Citywide SCR Intakes by Reporter Group, OCTOBER 17 – DECEMBER 17 and OCTOBER 18 – DECEMBER 18

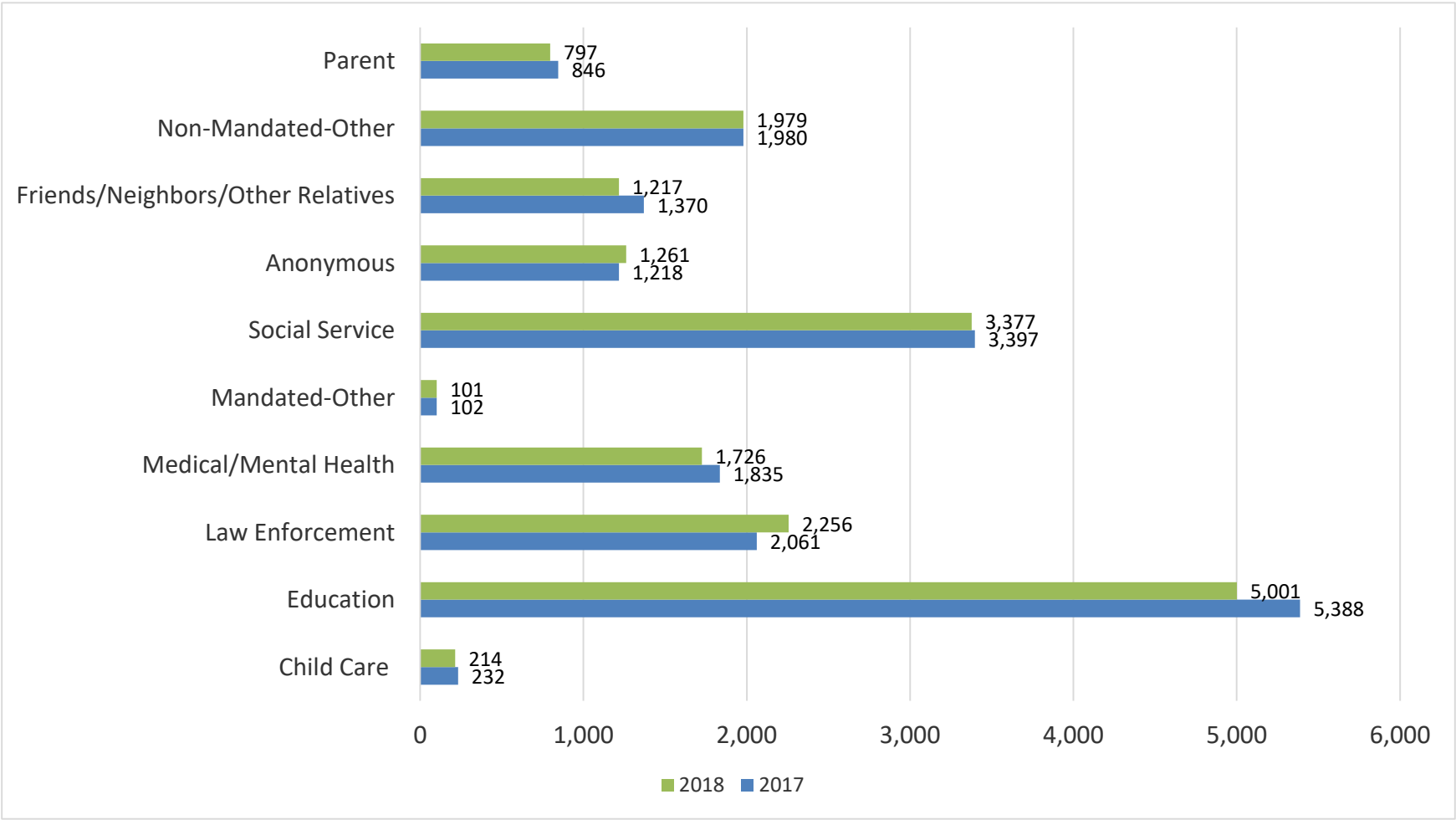

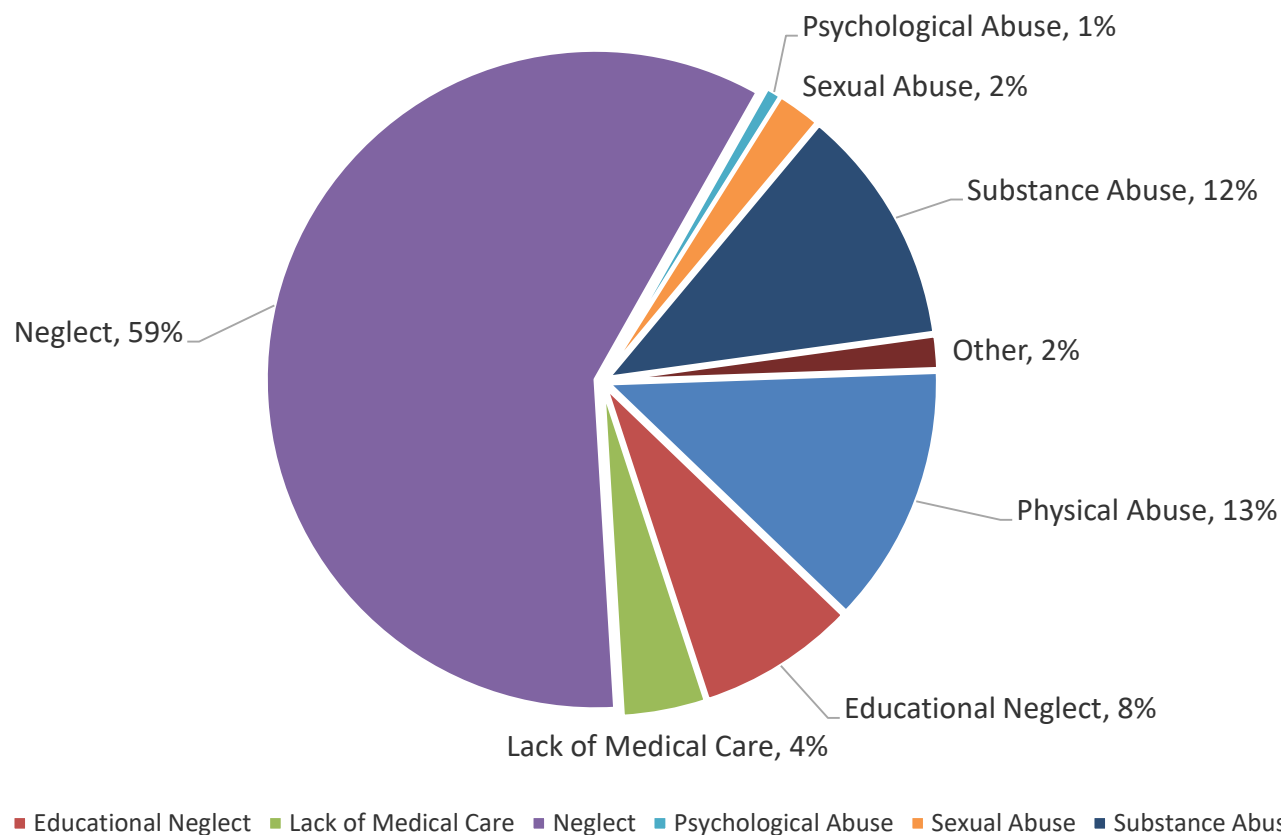


Table 2 - SCR Intakes by Reporter Group, OCTOBER 17 – DECEMBER 17 and OCTOBER 18 – DECEMBER 18

Year	Child Care/ Substitute Care Personnel	Educational Personnel	Law Enforcement	Medical/ Mental Health Personnel	Mandated- Other	Social Service Personnel	Anonymous	Friends/ Neighbors/ Other Relatives	Non- Mandated- Other	Parent	Foster Parent	 *Total
Bronx												
2017	55	1,616	482	521	23	983	347	393	552	203	1	5,176
2018	65	1,495	506	466	26	1,046	320	356	569	199	1	5,049
% Change	18.2%	-7.5%	5.0%	-10.6%	13.0%	6.4%	-7.8%	-9.4%	3.1%	-2.0%	0.0%	-2.5%
Brooklyn												
2017	65	1,457	667	445	27	906	345	370	509	227	1	5,019
2018	40	1,324	709	431	29	845	365	325	506	174	0	4,748
% Change	-38.5%	-9.1%	6.3%	-3.1%	7.4%	-6.7%	5.8%	-12.2%	-0.6%	-23.3%	-100.0%	-5.4%
Manhattan												
2017	33	622	348	313	16	486	204	249	331	111	0	2,713
2018	30	590	380	273	13	488	228	189	305	126	1	2,623
% Change	-9.1%	-5.1%	9.2%	-12.8%	-18.8%	0.4%	11.8%	-24.1%	-7.9%	13.5%	--	-3.3%
Queens												
2017	36	1,225	358	361	18	650	209	239	339	145	1	3,581
2018	32	1,223	443	362	19	647	217	219	375	151	1	3,689
% Change	-11.1%	-0.2%	23.7%	0.3%	5.6%	-0.5%	3.8%	-8.4%	10.6%	4.1%	0.0%	3.0%
Staten Island												
2017	14	347	76	91	4	160	67	74	89	41	0	963
2018	13	272	85	86	3	133	73	70	76	28	0	839
% Change	-7.1%	-21.6%	11.8%	-5.5%	-25.0%	-16.9%	9.0%	-5.4%	-14.6%	-31.7%	--	-12.9%
OSI												
2017	24	59	28	42	13	95	31	26	115	69	2	504
2018	27	49	24	57	9	76	34	28	108	83	2	497
% Change	12.5%	-16.9%	-14.3%	35.7%	-30.8%	-20.0%	9.7%	7.7%	-6.1%	20.3%	0.0%	-1.4%
Other												
2017	5	62	102	62	1	117	15	19	45	50	1	562
2018	7	48	109	51	2	142	24	30	40	36	0	532
% Change	40.0%	-22.6%	6.9%	-17.7%	100.0%	21.4%	60.0%	57.9%	-11.1%	-28.0%	-100.0%	-5.3%
Citywide												
2017	232	5,388	2,061	1,835	102	3,397	1,218	1,370	1,980	846	6	18,518
2018	214	5,001	2,256	1,726	101	3,377	1,261	1,217	1,979	797	5	17,977
% Change	-7.8%	-7.2%	9.5%	-5.9%	-1.0%	-0.6%	3.5%	-11.2%	-0.1%	-5.8%	-16.7%	-2.9%

*There is a small number of intakes with unknown reporter that is included in the totals.

Figure 3: SCR Allegations, OCTOBER 18 – DECEMBER 18



Total Allegations = 43,147

Allegations are grouped as follows: Physical Abuse - burn, fatality, fracture, choking, twisting, shaking, excessive corporal punishment, internal injuries, lacerations, bruises, welts, poisoning, noxious substances; Educational Neglect – educational neglect; Lack of Medical Care – lack of medical care; Neglect - inadequate guardianship, inadequate food, clothing, shelter, lack of supervision, malnutrition, failure to thrive, swelling, dislocations, sprains; Psychological Abuse - isolation, emotional neglect; Sexual Abuse – sexual abuse; Substance Abuse - parental drug use, child drug use; and Other - abandonment, inappropriate custodial conduct.

Table 3 - SCR Allegations, OCTOBER 17 – DECEMBER 17 and OCTOBER 18 – DECEMBER 18

Year	Physical Abuse	Educational Neglect	Lack of Medical Care	Neglect	Psychological Abuse	Sexual Abuse	Substance Abuse	Other	Total
Bronx									
2017	1,386	1,373	662	7,770	79	241	1,591	99	13,201
2018	1,478	1,242	588	7,421	101	248	1,505	110	12,693
% Change	6.6%	-9.5%	-11.2%	-4.5%	27.8%	2.9%	-5.4%	11.1%	-3.8%
Brooklyn									
2017	1,555	900	506	7,608	86	275	1,473	126	12,529
2018	1,404	907	427	6,657	78	235	1,360	188	11,256
% Change	-9.7%	0.8%	-15.6%	-12.5%	-9.3%	-14.5%	-7.7%	49.2%	-10.2%
Manhattan									
2017	666	436	237	3304	39	87	752	30	5,551
2018	592	405	207	3103	31	115	634	81	5,168
% Change	-11.1%	-7.1%	-12.7%	-6.1%	-20.5%	32.2%	-15.7%	170.0%	-6.9%
Queens									
2017	1,223	522	342	4,970	87	164	942	188	8,438
2018	1,283	539	333	4,942	68	165	923	203	8,456
% Change	4.9%	3.3%	-2.6%	-0.6%	-21.8%	0.6%	-2.0%	8.0%	0.2%
Staten Island									
2017	294	210	159	1,516	19	36	320	69	2,623
2018	291	171	111	1,538	14	38	343	37	2,543
% Change	-1.0%	-18.6%	-30.2%	1.5%	-26.3%	5.6%	7.2%	-46.4%	-3.0%
OSI									
2017	296	42	60	1,228	13	88	156	4	1,887
2018	290	45	59	1,192	9	73	162	1	1,831
% Change	-2.0%	7.1%	-1.7%	-2.9%	-30.8%	-17.0%	3.8%	-75.0%	-3.0%
Other									
2017	115	61	63	620	16	43	136	86	1,140
2018	157	50	38	658	19	51	143	84	1,200
% Change	36.5%	-18.0%	-39.7%	6.1%	18.8%	18.6%	5.1%	-2.3%	5.3%
Citywide									
2017	5,535	3,544	2,029	27,016	339	934	5,370	602	45,369
2018	5,495	3,359	1,763	25,511	320	925	5,070	704	43,147
% Change	-0.7%	-5.2%	-13.1%	-5.6%	-5.6%	-1.0%	-5.6%	16.9%	-4.9%

TABLE 4 - Child Welfare Prevention Cases

New and Closed

January 2015 - December 2018

Month	New Cases	Closed Cases
2015		
Jan-15	736	792
Feb-15	910	751
Mar-15	1,131	831
Apr-15	987	932
May-15	921	999
Jun-15	1,080	930
Jul-15	906	1,217
Aug-15	898	1,064
Sep-15	768	964
Oct-15	754	889
Nov-15	751	807
Dec-15	1,015	881
2016		
Jan-16	797	770
Feb-16	900	795
Mar-16	1,029	978
Apr-16	835	892
May-16	890	966
Jun-16	996	935
Jul-16	842	1,069
Aug-16	897	1,006
Sep-16	820	850
Oct-16	776	627
Nov-16	728	490
Dec-16	816	462
2017		
Jan-17	550	449
Feb-17	602	920
Mar-17	864	1,032
Apr-17	645	780
May-17	790	925
Jun-17	908	944
Jul-17	765	852
Aug-17	875	864
Sep-17	841	747
Oct-17	870	762
Nov-17	778	737
Dec-17	817	728
2018		
Jan-18	724	567
Feb-18	776	783
Mar-18	879	776
Apr-18	792	613
May-18	755	857
Jun-18	736	837
Jul-18	808	856
Aug-18	892	954
Sep-18	751	755
Oct-18	856	767
Nov-18	781	701
Dec-18	806	718

Table 5 - Referrals to Child Welfare Prevention Services by Source
January 2015 - December 2018

Month	Total Referrals	Division of Child Protection	Foster Care Agencies	PPRS Transfer	School	Self	Other Sources *
2015							
Jan-15	1,430	74.4%	1.6%	8.7%	1.8%	3.8%	9.7%
Feb-15	1,538	76.5%	0.8%	8.1%	1.8%	4.7%	8.2%
Mar-15	1,798	74.6%	0.9%	7.3%	1.6%	4.8%	10.8%
Apr-15	1,719	78.2%	1.3%	7.2%	0.6%	3.5%	9.1%
May-15	1,561	77.2%	1.0%	5.1%	1.5%	4.5%	10.8%
Jun-15	1,716	77.4%	1.1%	7.7%	1.2%	3.5%	9.1%
Jul-15	1,511	79.6%	0.9%	7.2%	0.3%	3.8%	8.2%
Aug-15	1,418	79.3%	2.2%	7.8%	0.2%	3.1%	7.5%
Sep-15	1,209	72.1%	2.8%	10.4%	0.5%	5.5%	8.6%
Oct-15	1,338	70.4%	1.9%	8.3%	2.1%	5.8%	11.6%
Nov-15	1,220	68.2%	1.8%	9.6%	1.4%	6.2%	12.8%
Dec-15	1,526	73.5%	1.6%	8.0%	2.0%	5.0%	9.9%
2016							
Jan-16	1,370	73.6%	1.6%	8.2%	0.7%	5.4%	10.6%
Feb-16	1,436	75.8%	2.2%	7.8%	1.0%	3.8%	9.3%
Mar-16	1,557	72.0%	2.1%	8.8%	1.0%	4.6%	11.4%
Apr-16	1,378	76.1%	1.5%	7.4%	1.5%	3.5%	10.0%
May-16	1,386	73.4%	1.4%	8.7%	1.0%	4.7%	10.8%
Jun-16	1,564	77.2%	2.4%	6.2%	1.5%	4.1%	8.6%
Jul-16	1,338	80.3%	1.7%	6.4%	1.0%	4.2%	6.4%
Aug-16	1,385	79.1%	1.8%	7.1%	0.4%	4.0%	7.6%
Sep-16	1,297	77.8%	2.1%	7.5%	0.8%	4.5%	7.4%
Oct-16	1,247	70.1%	2.0%	7.6%	1.5%	5.9%	12.9%
Nov-16	1,229	67.8%	2.0%	7.8%	1.2%	5.5%	15.8%
Dec-16	1,175	76.0%	1.5%	7.1%	1.3%	3.8%	10.3%
2017							
Jan-17	1,046	78.5%	1.4%	6.7%	0.7%	3.1%	9.7%
Feb-17	1,067	77.7%	0.8%	6.7%	0.8%	3.8%	10.1%
Mar-17	1,383	79.1%	0.6%	6.9%	0.9%	4.0%	8.5%
Apr-17	1,116	81.2%	1.0%	5.9%	1.1%	1.4%	9.4%
May-17	1,335	81.9%	0.9%	5.5%	1.3%	2.8%	7.6%
Jun-17	1,449	82.3%	0.8%	5.9%	1.2%	2.9%	6.9%
Jul-17	1,273	83.3%	0.9%	7.9%	0.7%	1.9%	5.3%
Aug-17	1,429	82.7%	0.6%	9.3%	0.3%	1.7%	5.2%
Sep-17	1,383	79.6%	1.6%	7.7%	0.8%	2.8%	7.4%
Oct-17	1,489	77.5%	1.5%	7.5%	1.0%	3.1%	9.4%
Nov-17	1,235	75.1%	1.5%	8.8%	2.2%	3.6%	8.8%
Dec-17	1,227	70.5%	1.6%	10.2%	2.4%	3.7%	11.5%
2018							
Jan-18	1,399	74.5%	1.5%	10.7%	1.4%	2.9%	9.0%
Feb-18	1,302	76.8%	1.5%	7.5%	1.3%	3.5%	9.4%
Mar-18	1,396	79.7%	1.5%	7.4%	1.2%	2.6%	7.5%
Apr-18	1,383	80.0%	1.2%	5.9%	1.1%	3.1%	8.7%
May-18	1,189	78.8%	1.3%	7.0%	1.0%	3.3%	8.7%
Jun-18	1,284	81.9%	0.5%	7.6%	0.9%	3.2%	6.0%
Jul-18	1,403	82.5%	0.7%	8.3%	0.6%	2.4%	5.5%
Aug-18	1,391	82.1%	1.7%	6.8%	0.4%	2.7%	6.3%
Sep-18	1,135	84.4%	1.5%	7.0%	0.9%	4.1%	2.1%
Oct-18	1,345	78.4%	1.5%	8.0%	1.2%	3.9%	7.0%
Nov-18	1,109	73.9%	1.4%	9.5%	1.6%	4.3%	9.4%
Dec-18	1,164	70.5%	1.6%	10.9%	2.1%	4.5%	10.4%

*Other Community Sources includes the Department of Homeless Services, Family Court, FAP, Hospitals and Medical facilities, the NYC Housing Authority, Probation, and Sponsor Agencies.