

FLASH

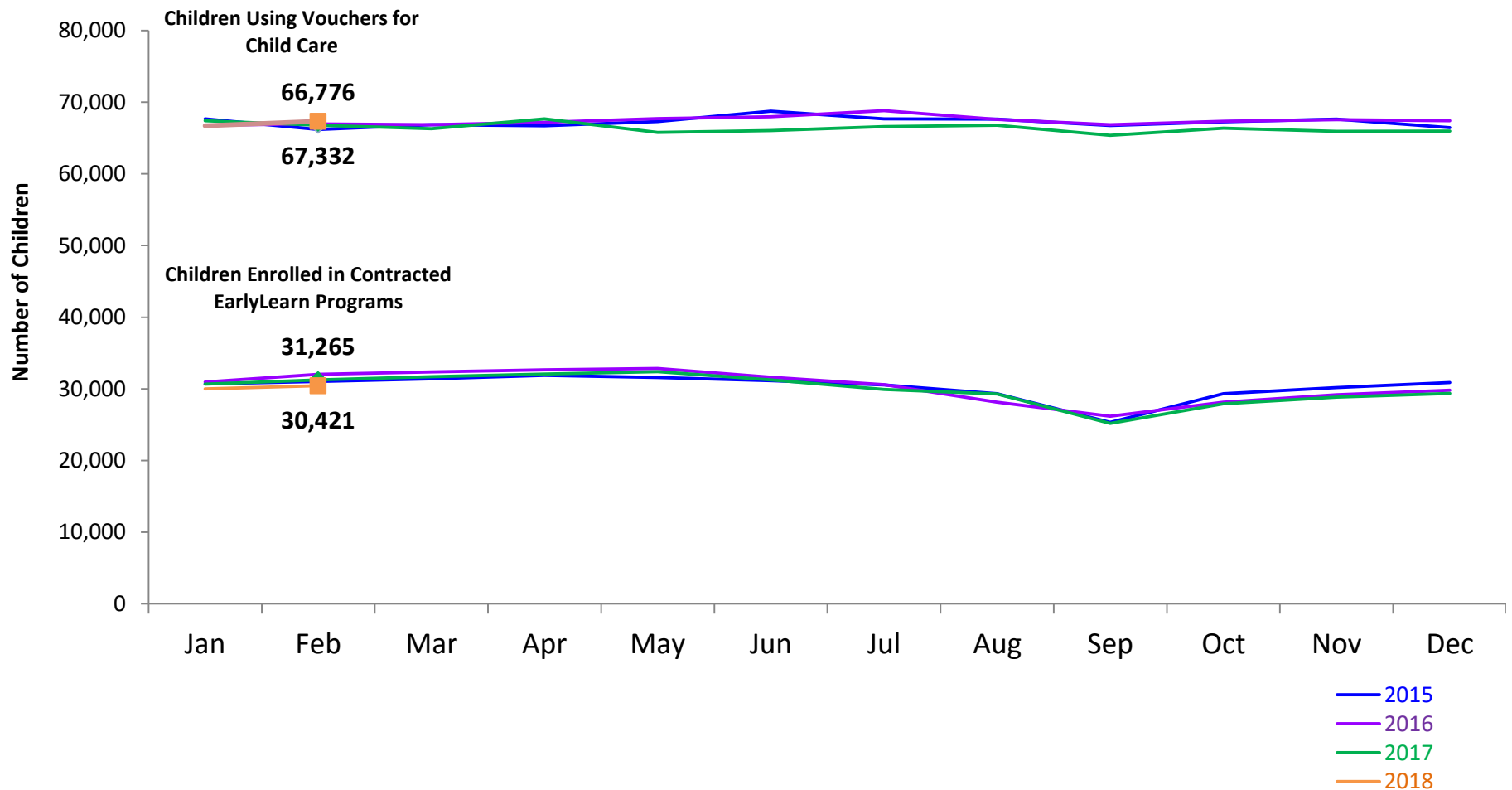
monthly indicator

REPORT

March 2018

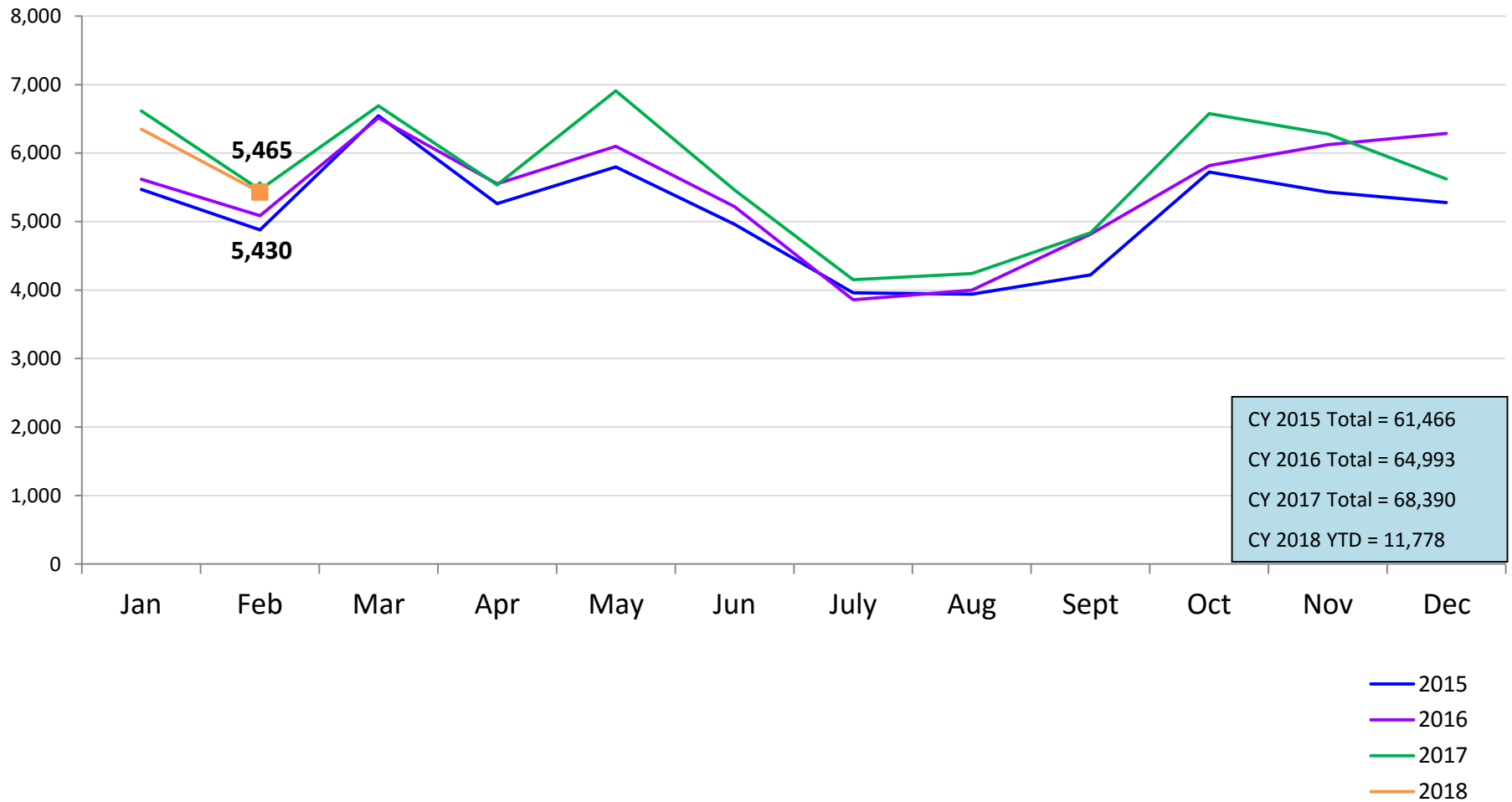
Children Enrolled in Contracted EarlyLearn Programs and Children Using Vouchers for Child Care

January 2015 – February 2018 (End of Month)



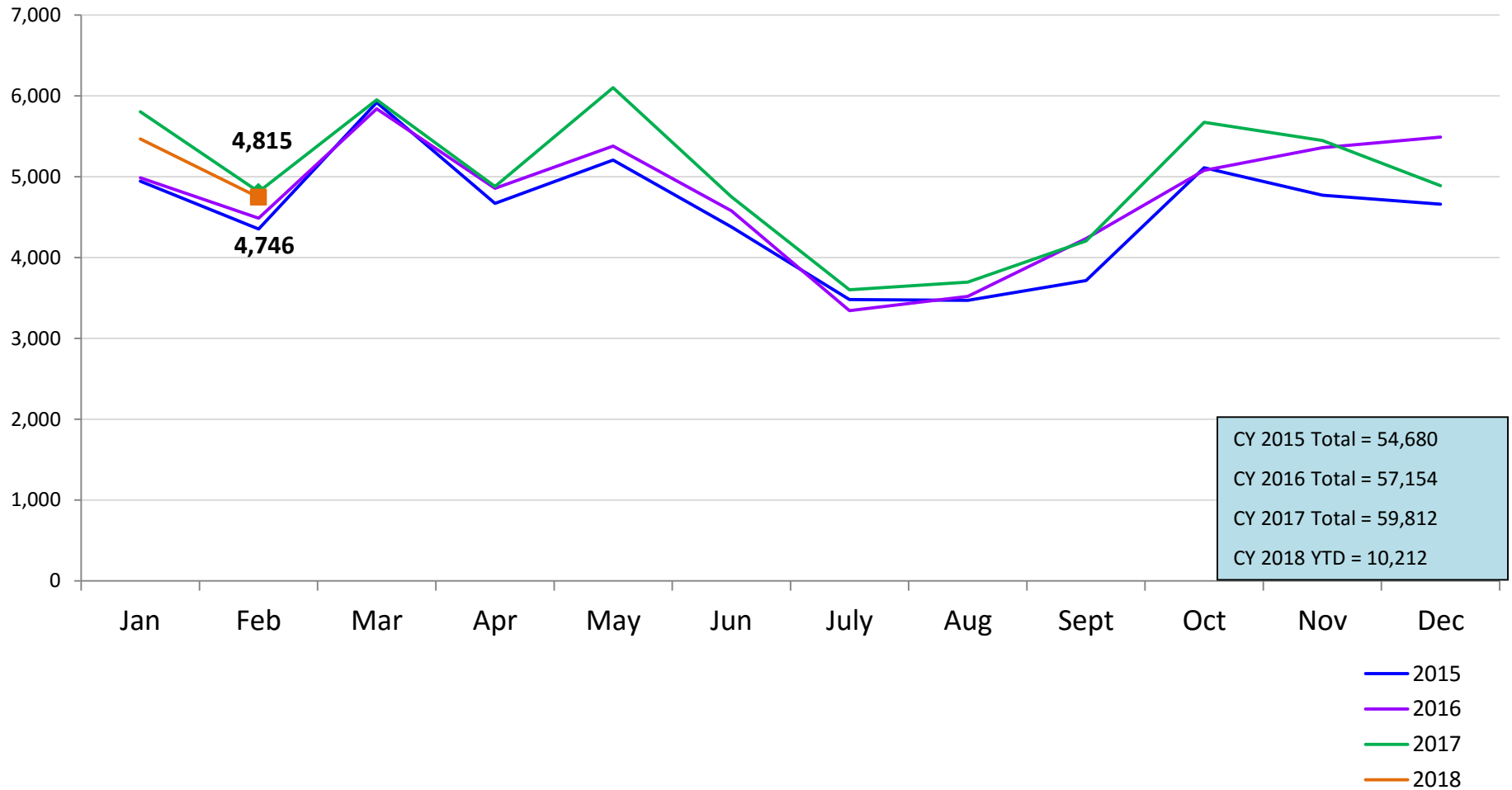
SCR Intakes

January 2015 – February 2018 (Monthly Total)



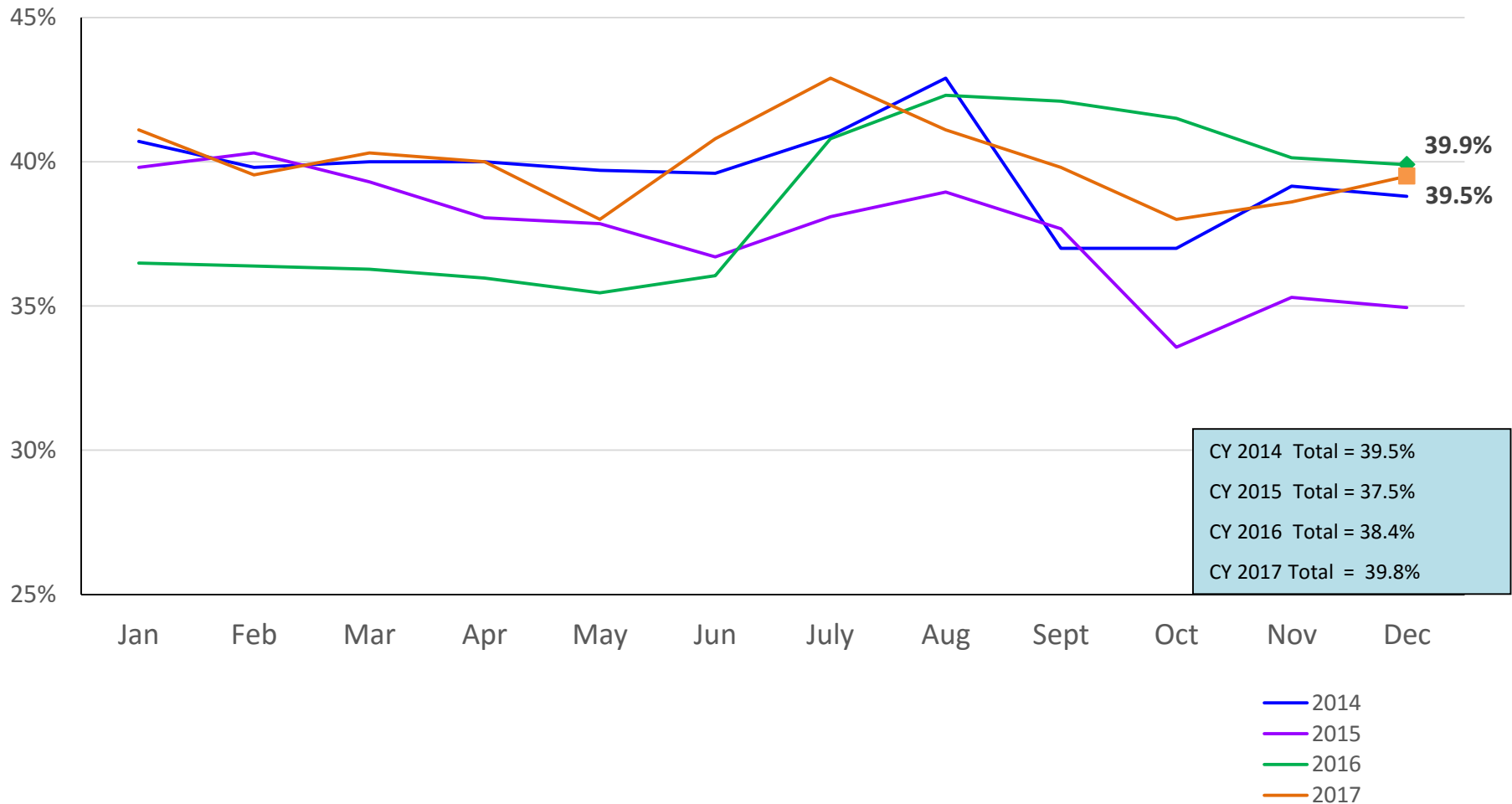
SCR Consolidated Investigations

January 2015 – February 2018 (Monthly Total)



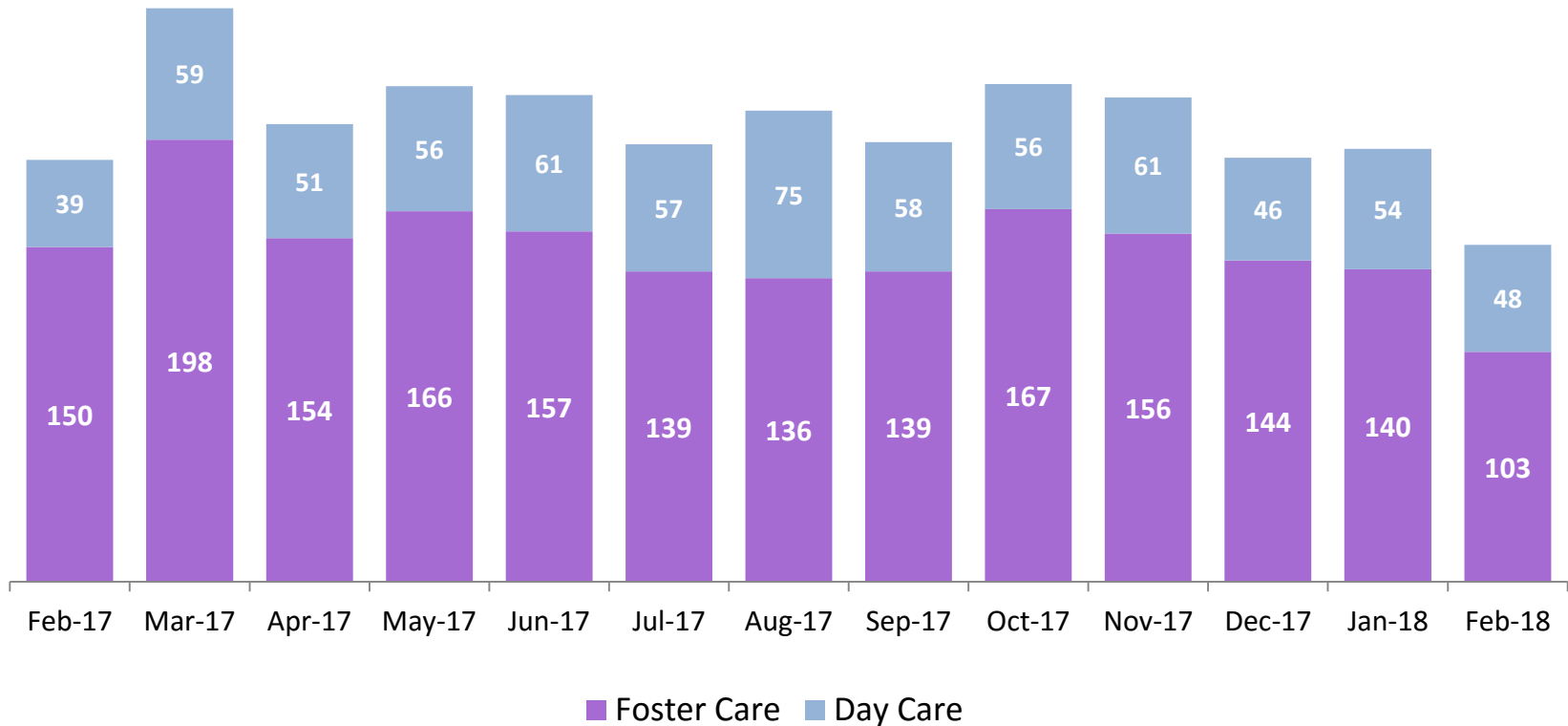
SCR Investigation Indication Rate

January 2014 – December 2017



OSI Foster Care and Day Care Investigations

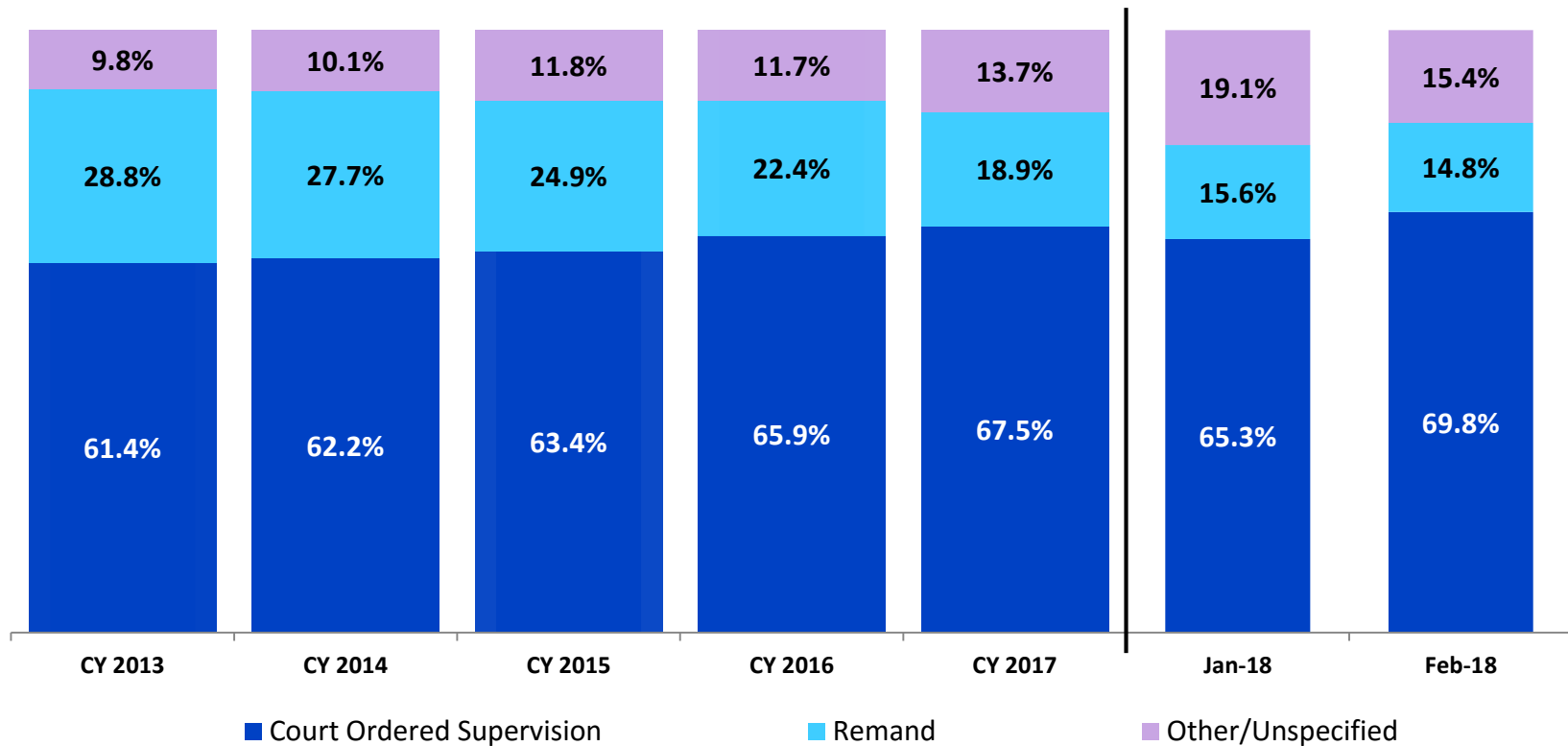
February 2017 – February 2018



	Feb 2017	Mar 2017	Apr 2017	May 2017	Jun 2017	Jul 2017	Aug 2017	Sep 2017	Oct 2017	Nov 2017	Dec 2017	Jan 2018	Feb 2018
Number of Investigations	189	257	205	222	218	196	211	197	223	217	190	194	151

Article 10 Filings and Initial Hearing Outcomes, Children

CY 2013 – February 2018

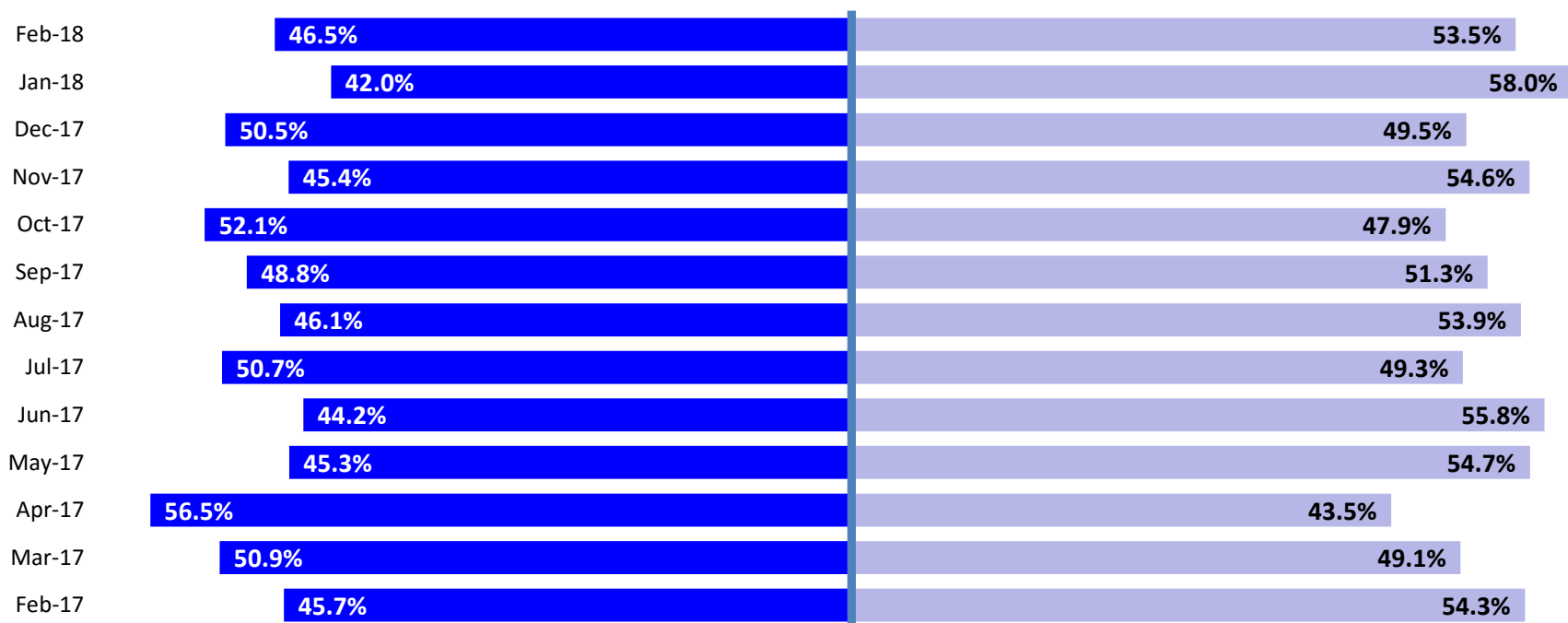


	CY 2013	CY 2014	CY 2015	CY 2016	CY 2017	Jan 2018	Feb 2018
Children with Article10 Filings	9,318	9,900	9,958	10,973	15,975	1,310	1,253

Note: The category "Other/Unspecified" includes released with no supervision, no order issued and no outcome specified.

Remands Approved at Initial Article 10 Hearing by Removal Status

February 2017 – February 2018

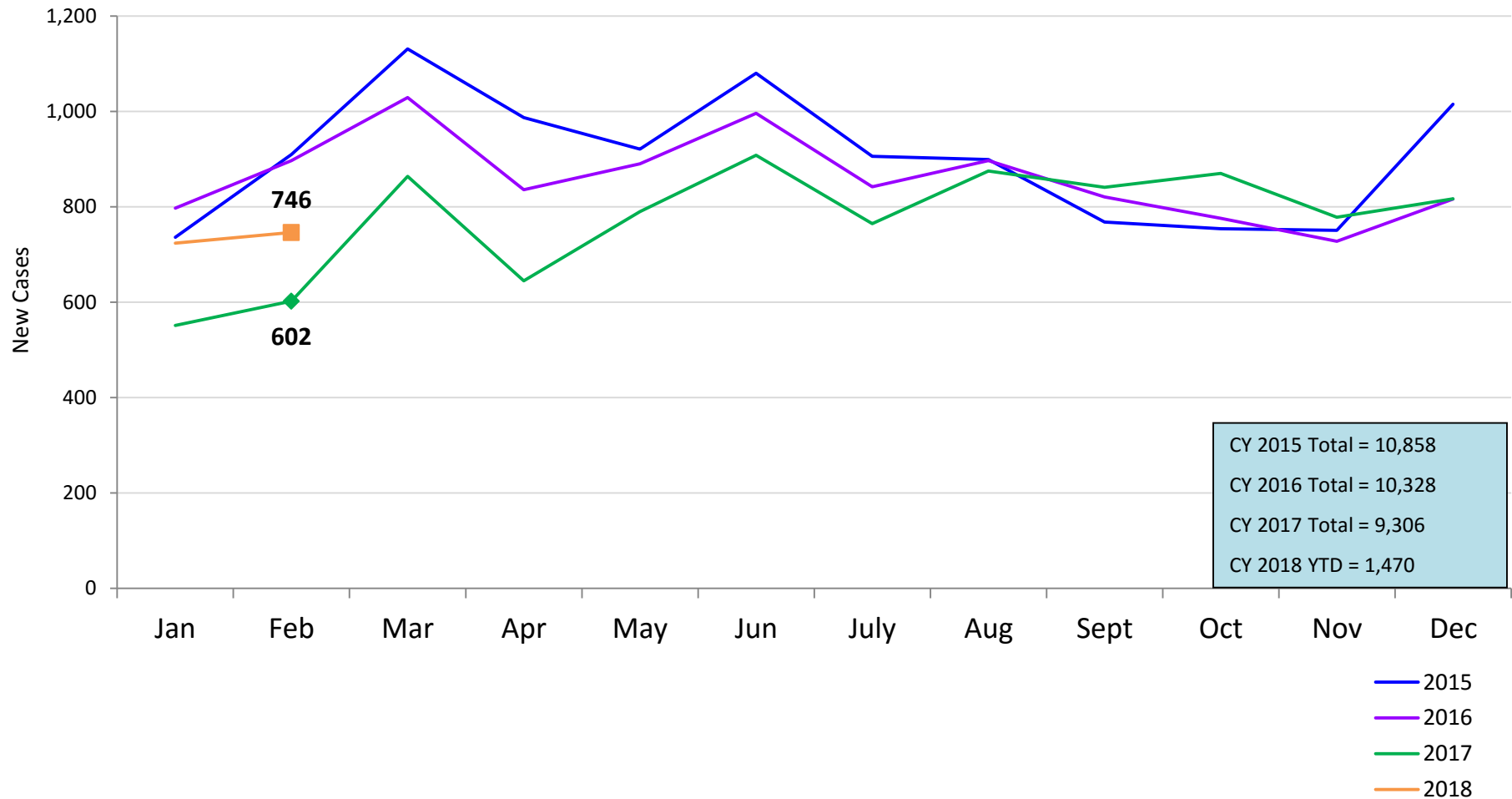


■ Pre-Filing Emergency Removals (court approved at initial hearing) ■ Post-Filing Removals (court ordered at initial hearing)

	Feb 2017	Mar 2017	Apr 2017	May 2017	Jun 2017	Jul 2017	Aug 2017	Sep 2017	Oct 2017	Nov 2017	Dec 2017	Jan 2018	Feb 2018
Children Remanded	188	269	230	289	249	270	267	240	305	238	210	205	185

New Child Welfare Preventive Cases*

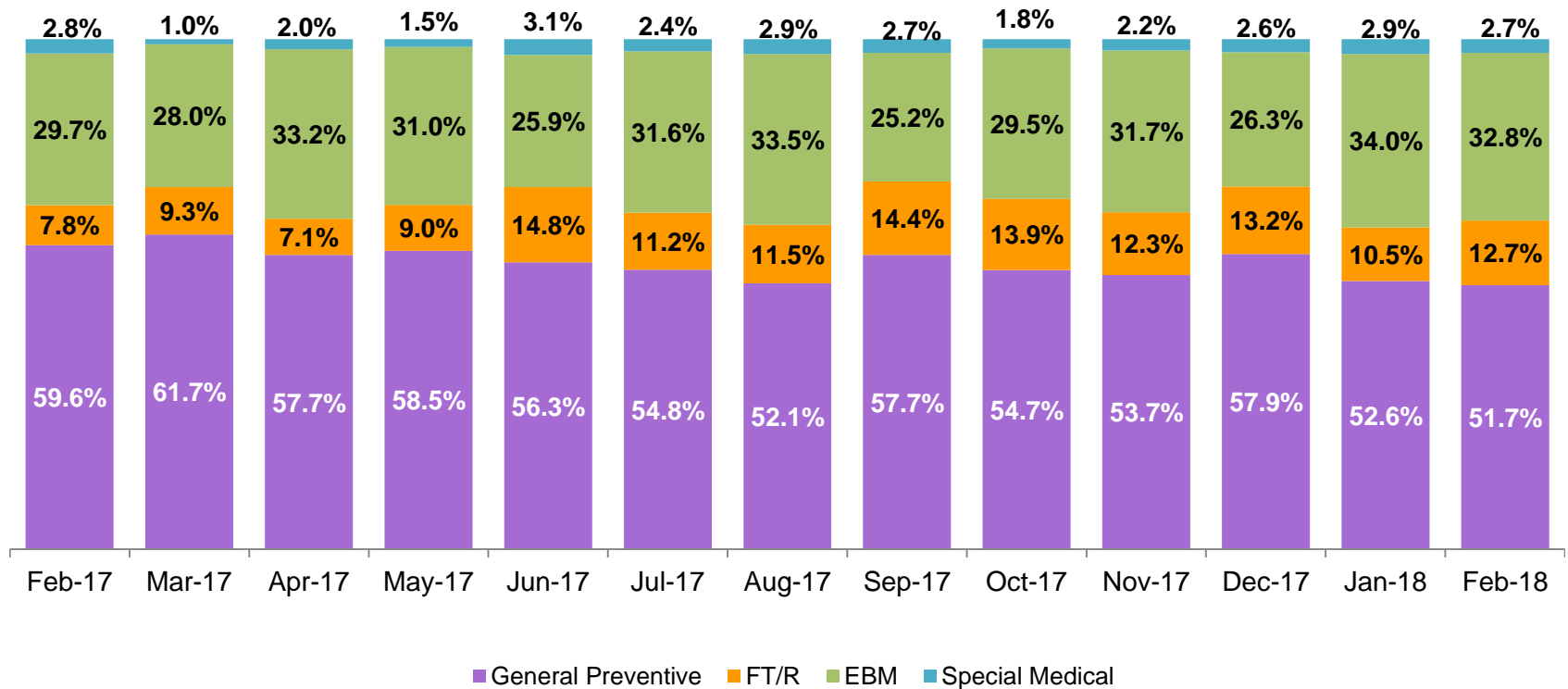
January 2015 – February 2018



* New preventive cases do not include cases transferred from one preventive program to another. See Pages 32 and 33 of the Appendix for supporting data.

New Child Welfare Preventive Cases by Program Type *

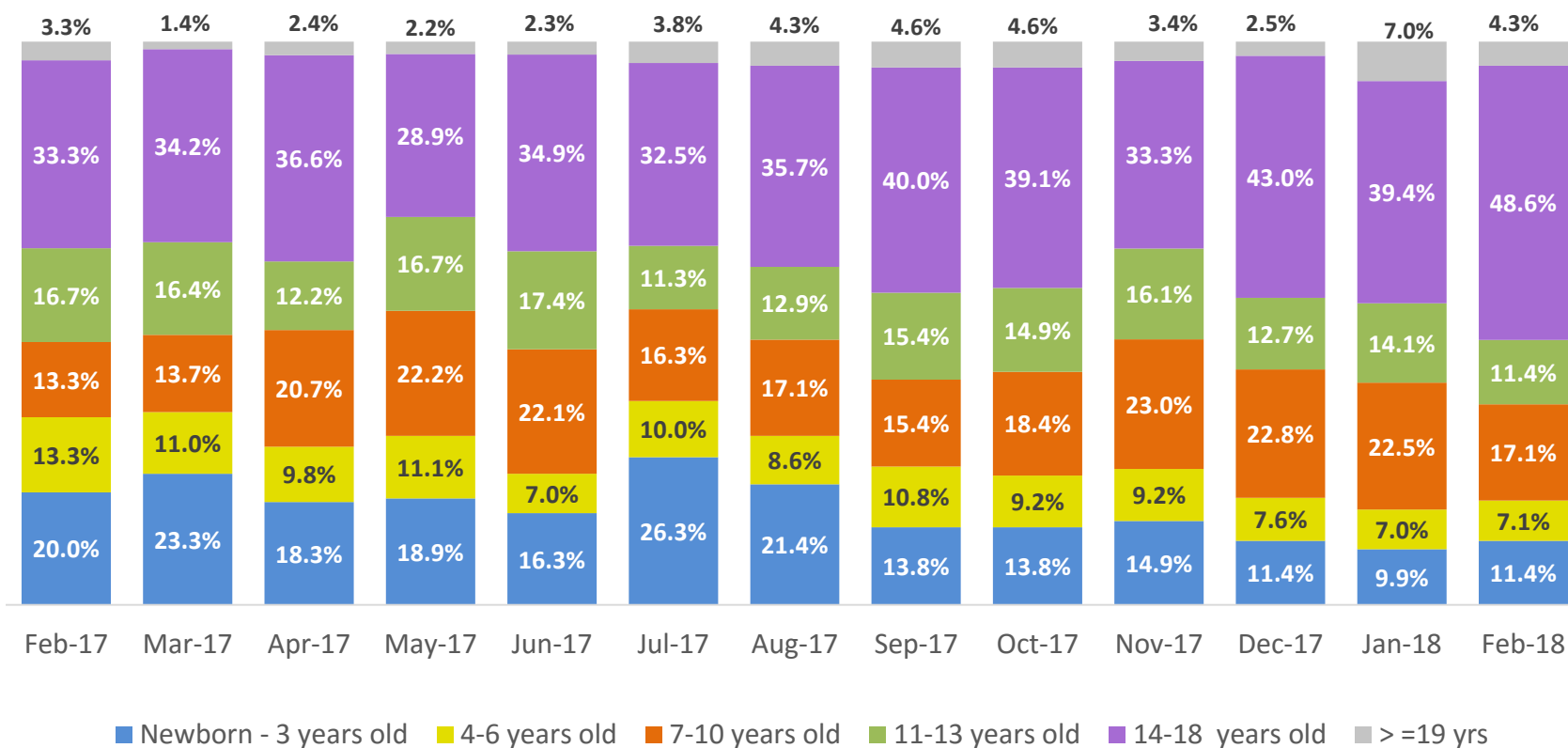
February 2017 – February 2018



	Feb 2017	Mar 2017	Apr 2017	May 2017	Jun 2017	Jul 2017	Aug 2017	Sep 2017	Oct 2017	Nov 2017	Dec 2017	Jan 2018	Feb 2018
Number of New Preventive Cases	602	864	645	790	908	765	875	841	870	778	817	724	746

* New preventive cases exclude cases transferred from one preventive program to another.

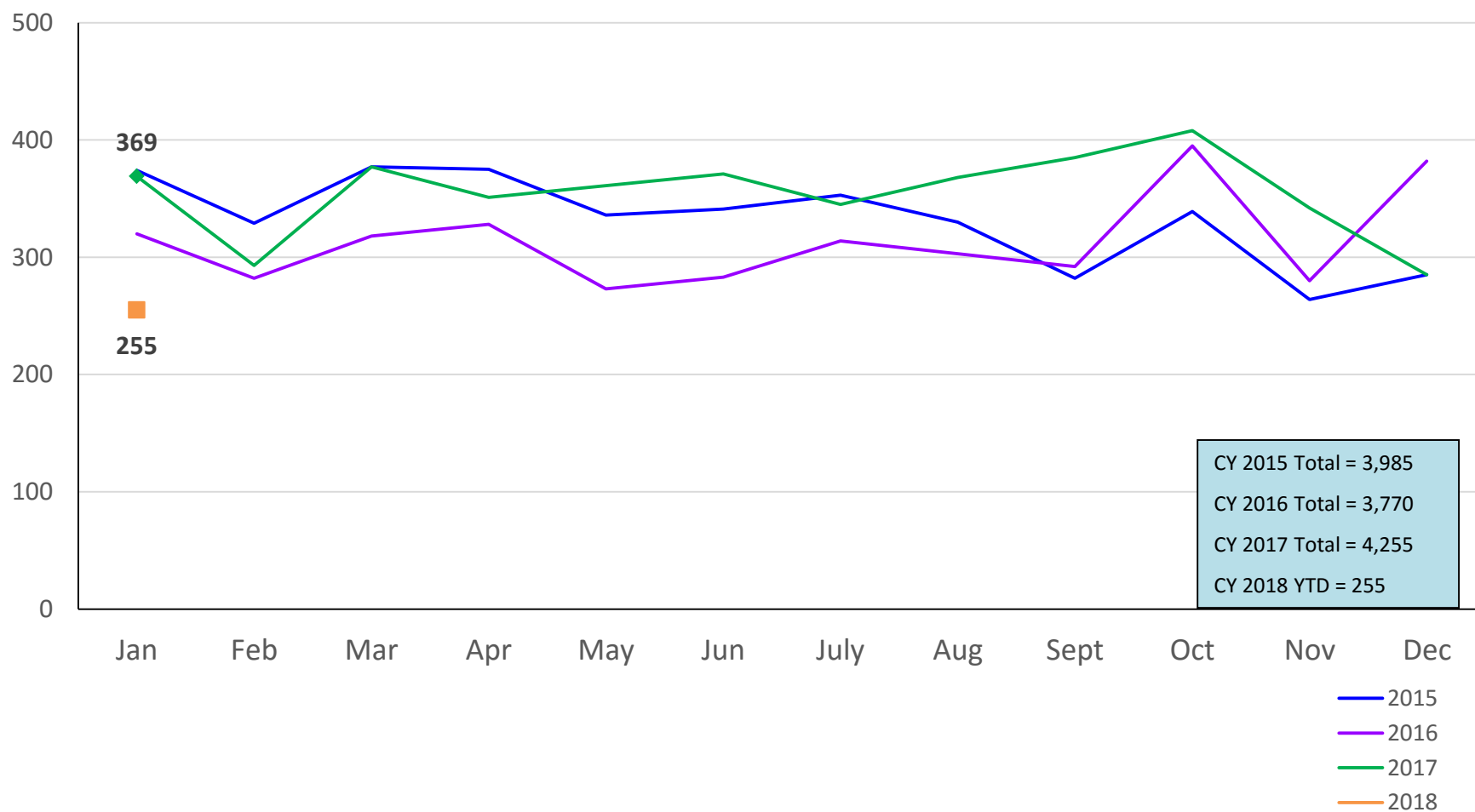
Average Daily Children's Center Population February 2017 – February 2018



	Feb 2017	Mar 2017	Apr 2017	May 2017	Jun 2017	Jul 2017	Aug 2017	Sep 2017	Oct 2017	Nov 2017	Dec 2017	Jan 2018	Feb 2018
Average Number of Children	60	73	82	90	86	80	70	65	87	87	79	71	70

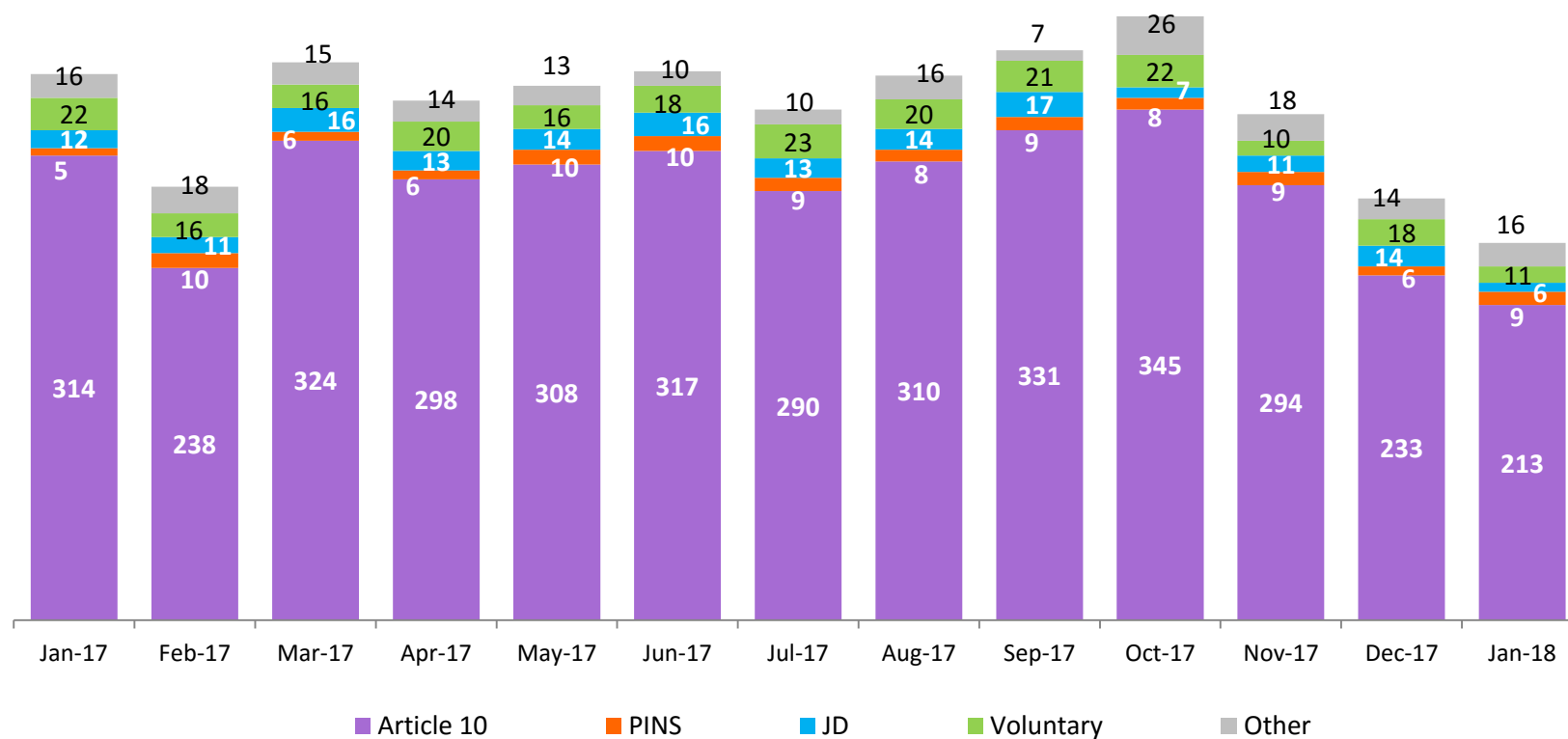
New Monthly Placements of Children into Foster Care

January 2015 – January 2018



Reason for New Placements of Children into Foster Care

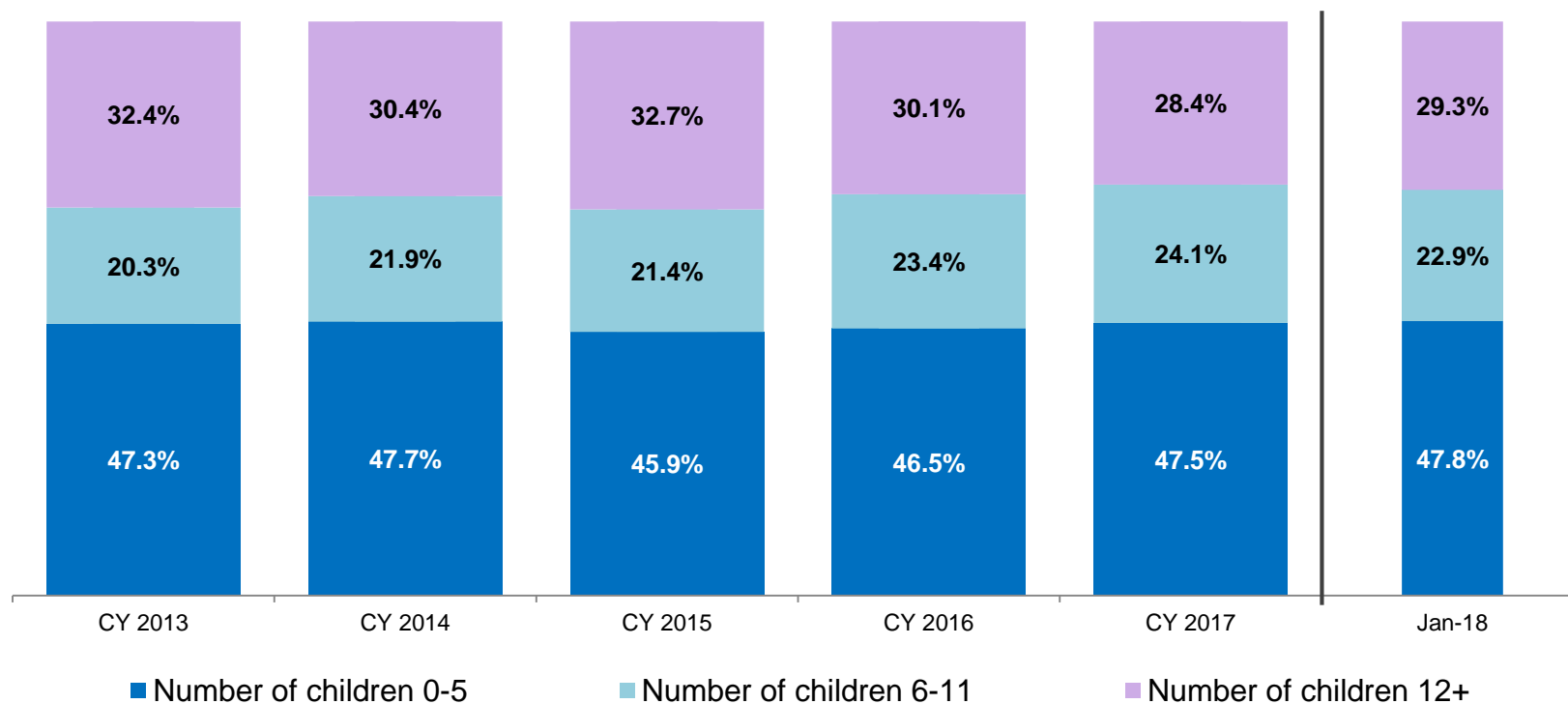
January 2017 – January 2018



	Jan 2017	Feb 2017	Mar 2017	Apr 2017	May 2017	Jun 2017	Jul 2017	Aug 2017	Sep 2017	Oct 2017	Nov 2017	Dec 2017	Jan 2018
Number of Placements	369	293	377	351	361	371	345	368	385	408	342	285	255

New Placements of Children into Foster Care* by Age

CY 2013 - January 2018

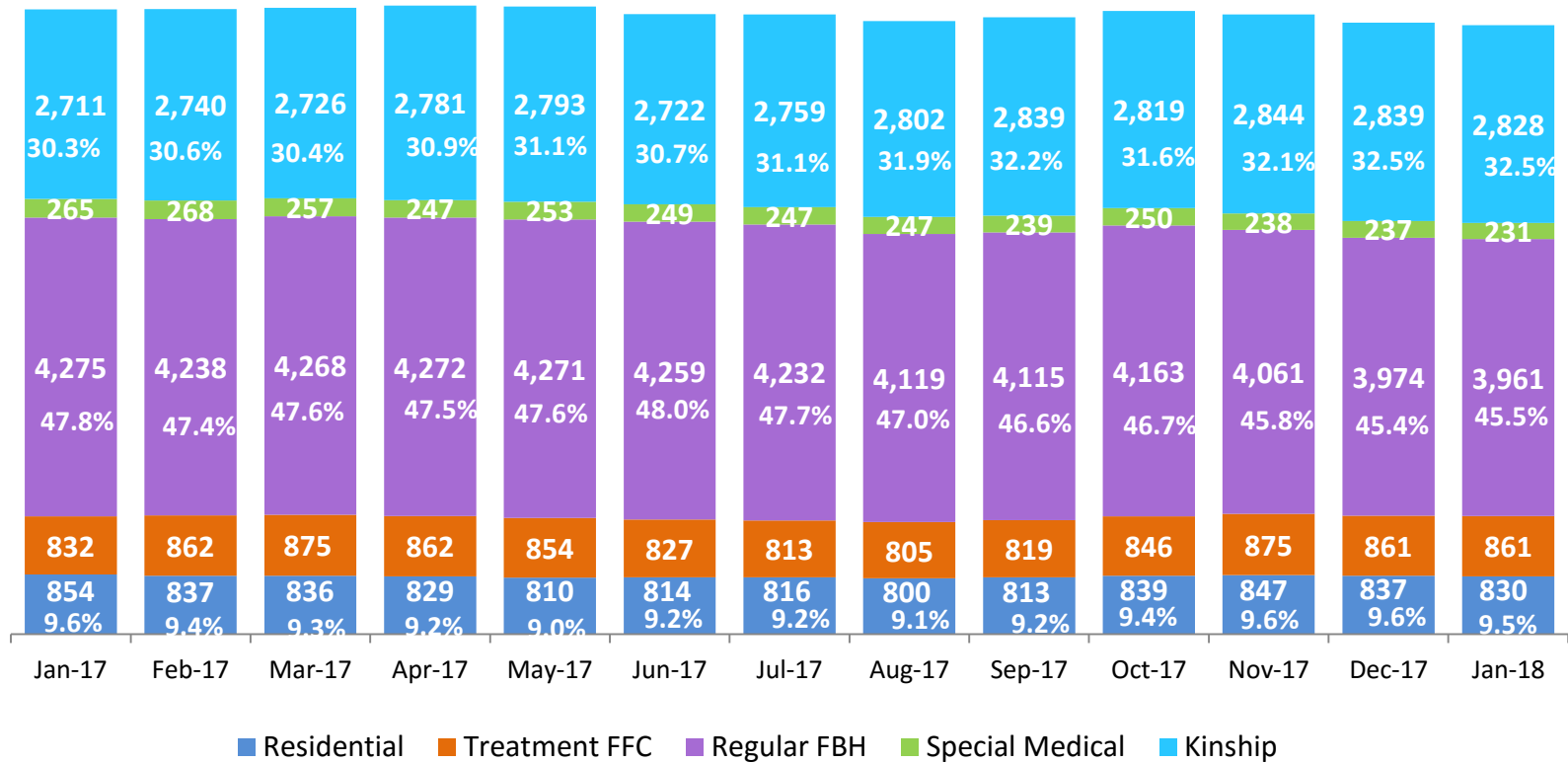


	CY 2013	CY 2014	CY 2015	CY 2016	CY 2017	Jan 2018
Number of Placements	4,283	4,160	3,760	3,557	4,097	249

*Excludes CTH placements.

Children in Foster Care *

January 2017 – January 2018 (end of month)

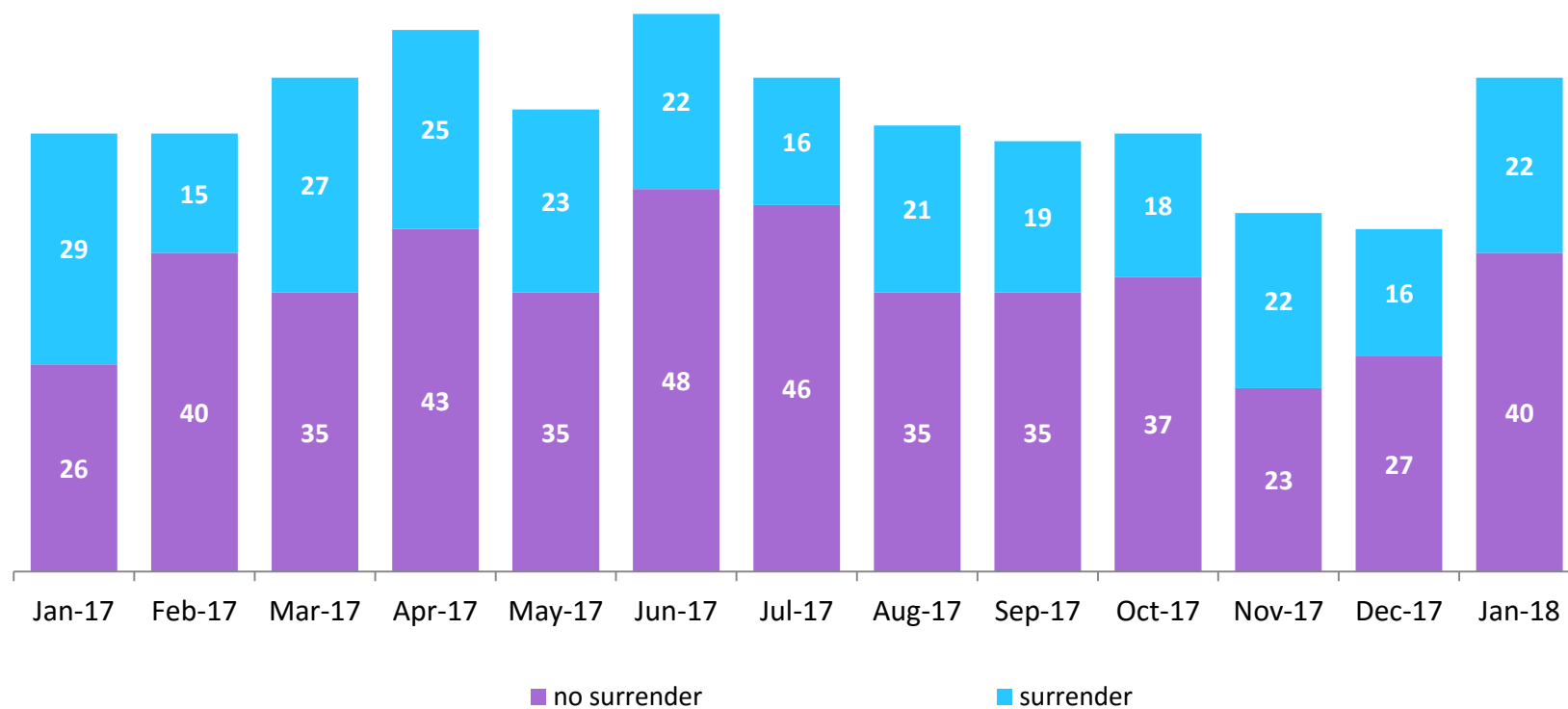


	Jan 2017	Feb 2017	Mar 2017	Apr 2017	May 2017	Jun 2017	Jul 2017	Aug 2017	Sep 2017	Oct 2017	Nov 2017	Dec 2017	Jan 2018
Number in Foster Care	8,937	8,945	8,962	8,991	8,981	8,871	8,867	8,773	8,825	8,917	8,865	8,747	8,711

*Excludes CTH placements and includes children in 24 hour care and approximately 200 young children who are living in foster homes or residential care facilities with their mothers who are in foster care (8D children).

Children Freed for Adoption, Surrender by at Least One Parent

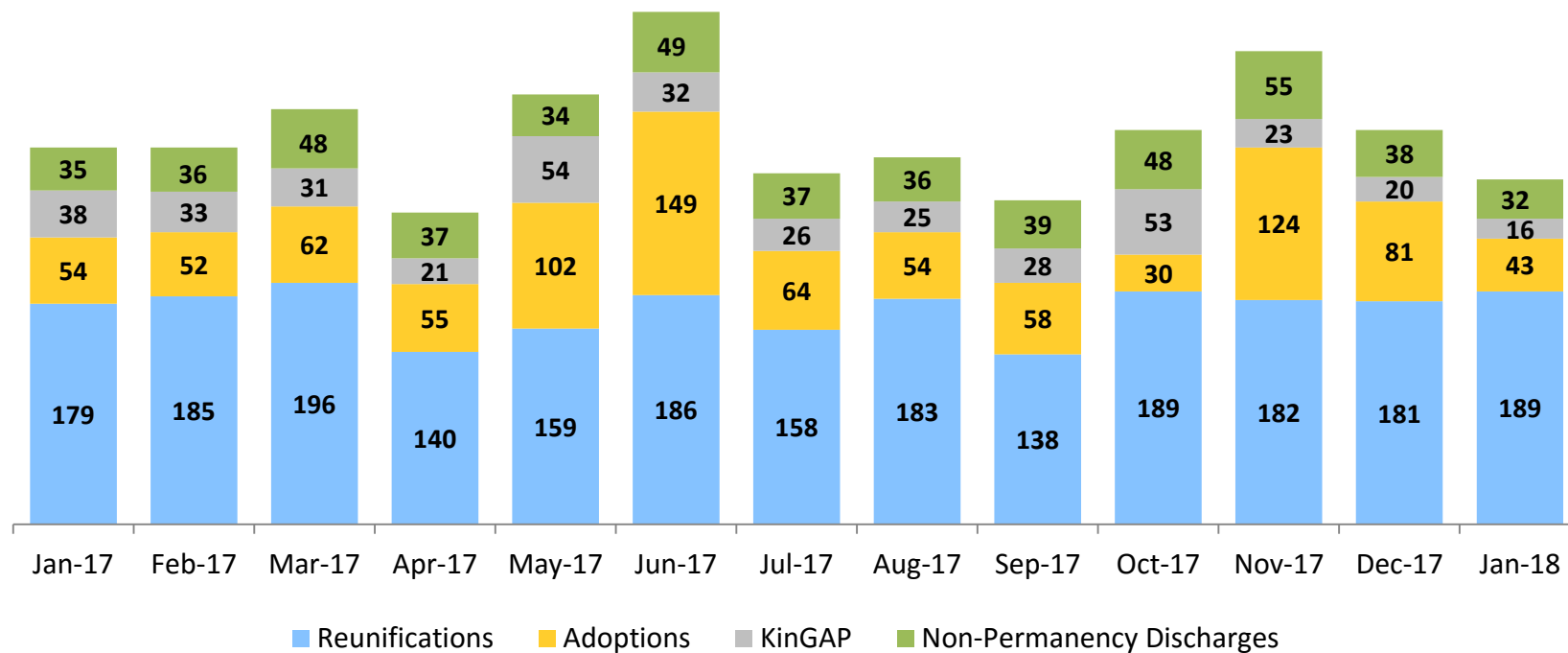
January 2017 – January 2018



	Jan 2017	Feb 2017	Mar 2017	Apr 2017	May 2017	Jun 2017	Jul 2017	Aug 2017	Sep 2017	Oct 2017	Nov 2017	Dec 2017	Jan 2018
Number Freed for Adoption	55	55	62	68	58	70	62	56	54	55	45	43	62

Permanency and Non-Permanency* Discharges from Foster Care**

January 2017 – January 2018



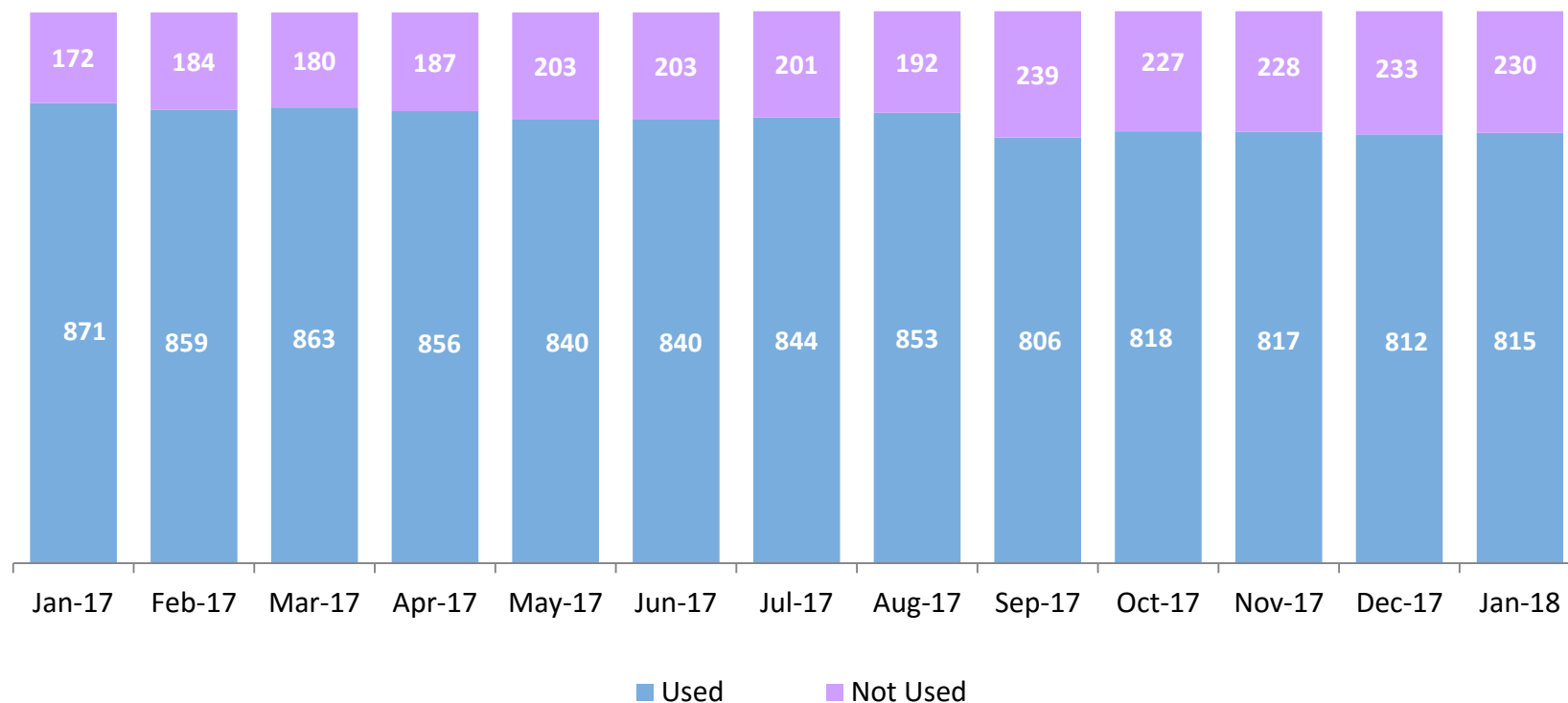
	Jan 2017	Feb 2017	Mar 2017	Apr 2017	May 2017	Jun 2017	Jul 2017	Aug 2017	Sep 2017	Oct 2017	Nov 2017	Dec 2017	Jan 2018
Number of Discharges	306	306	337	253	349	416	285	298	263	320	384	320	280

*Non-permanency discharges include AWOL, APPLA , other discharge destinations such as psychiatric institutions and correctional facilities and discharges with unspecified destinations.

**Excludes discharges of youth who entered care in CTH.

Residential Care Capacity and Utilization

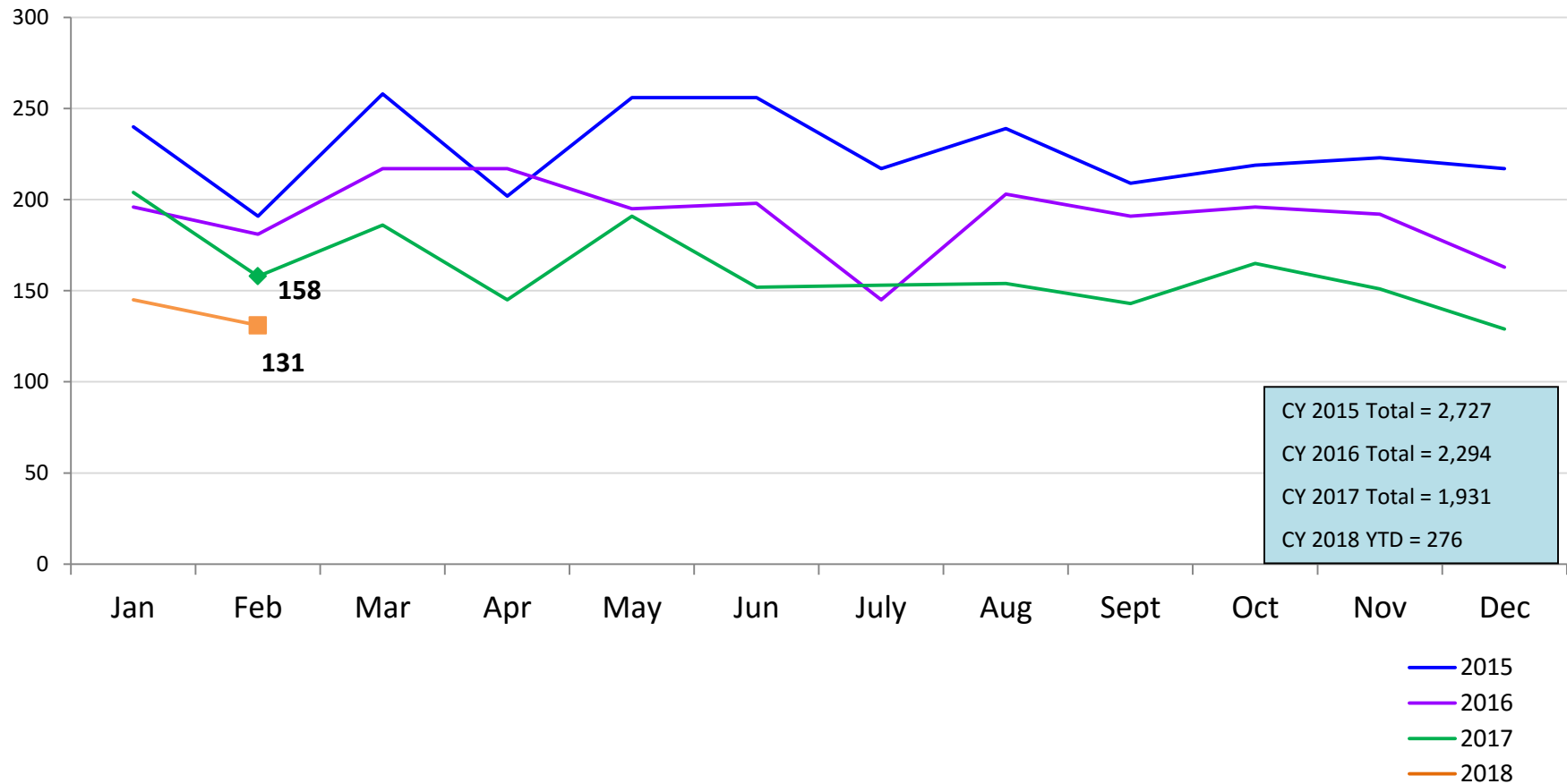
January 2017 – January 2018



	Jan 2017	Feb 2017	Mar 2017	Apr 2017	May 2017	Jun 2017	Jul 2017	Aug 2017	Sep 2017	Oct 2017	Nov 2017	Dec 2017	Jan 2018
Capacity	1,043	1,043	1,043	1,043	1,043	1,043	1,045	1,045	1,045	1,045	1,045	1,045	1,045

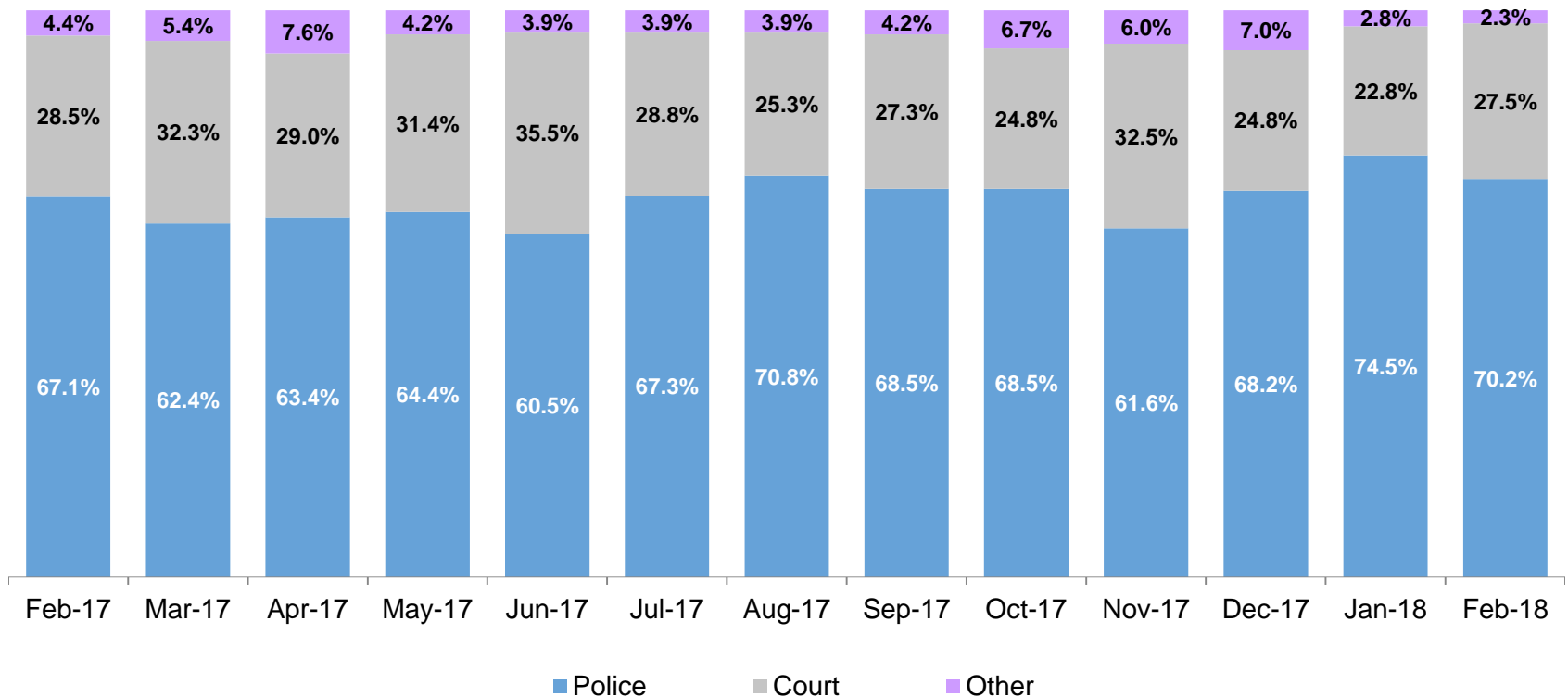
Total Monthly Admissions to Detention

January 2015 – February 2018 (Monthly Total)



Admit Authority, Detention Admissions

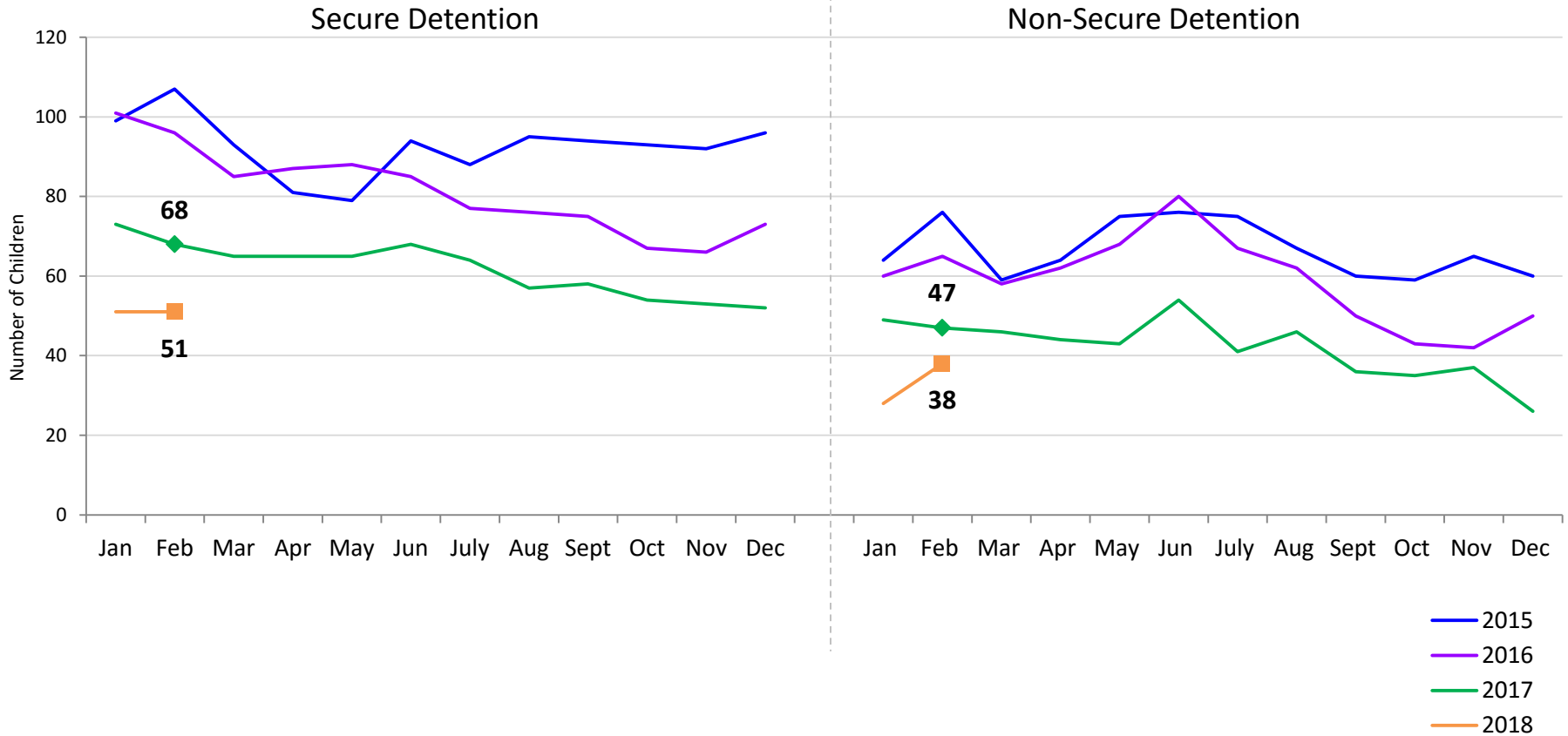
February 2017 – February 2018 (Monthly Total)



	Feb 2017	Mar 2017	Apr 2017	May 2017	Jun 2017	Jul 2017	Aug 2017	Sep 2017	Oct 2017	Nov 2017	Dec 2017	Jan 2018	Feb 2018
Number of Admissions	158	186	145	191	152	153	154	143	165	151	129	145	131

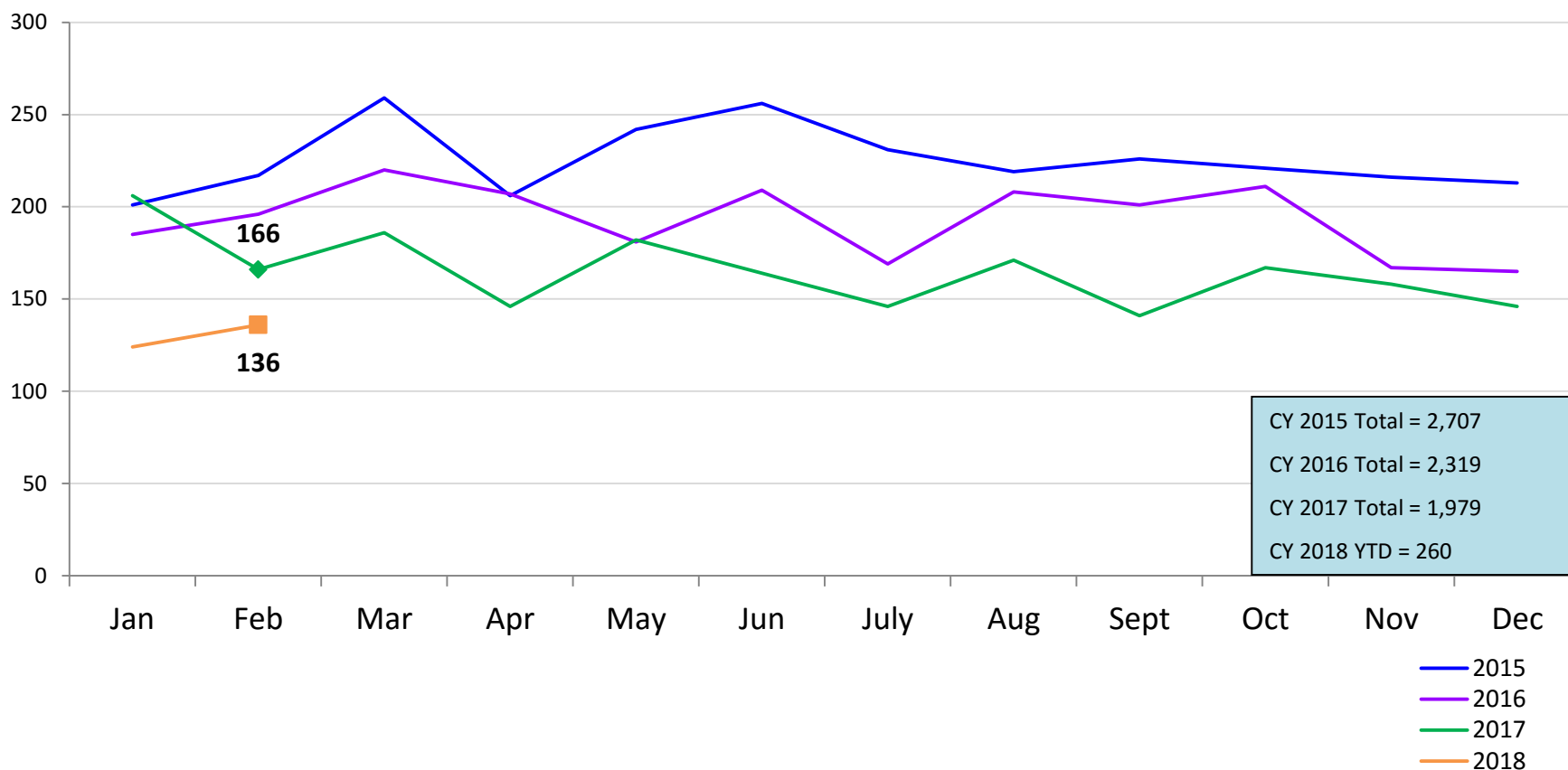
Monthly Average Daily Population

January 2015 – February 2018



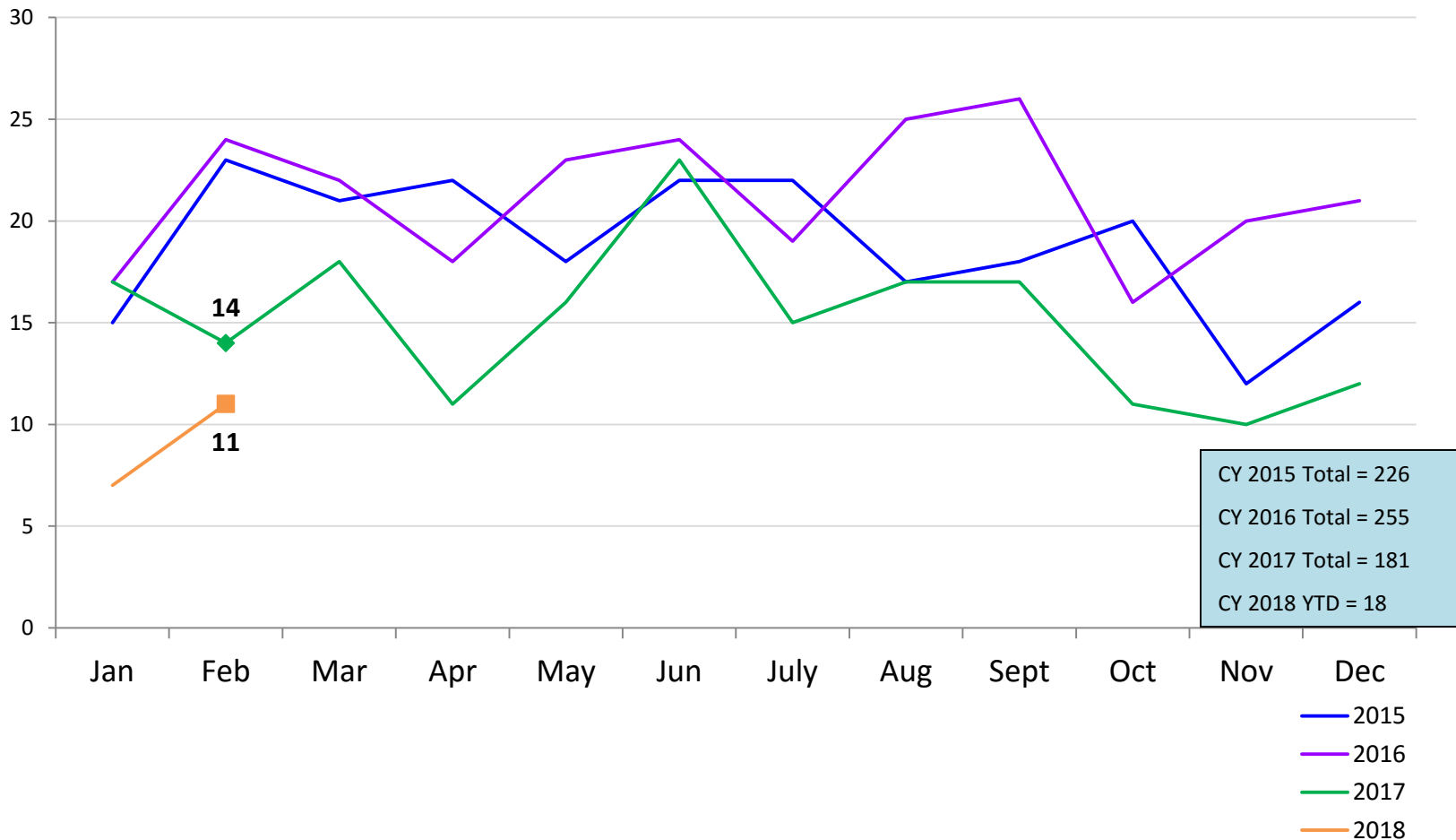
Total Monthly Releases from Detention

January 2015 – February 2018 (Monthly Total)



Close to Home Admissions*

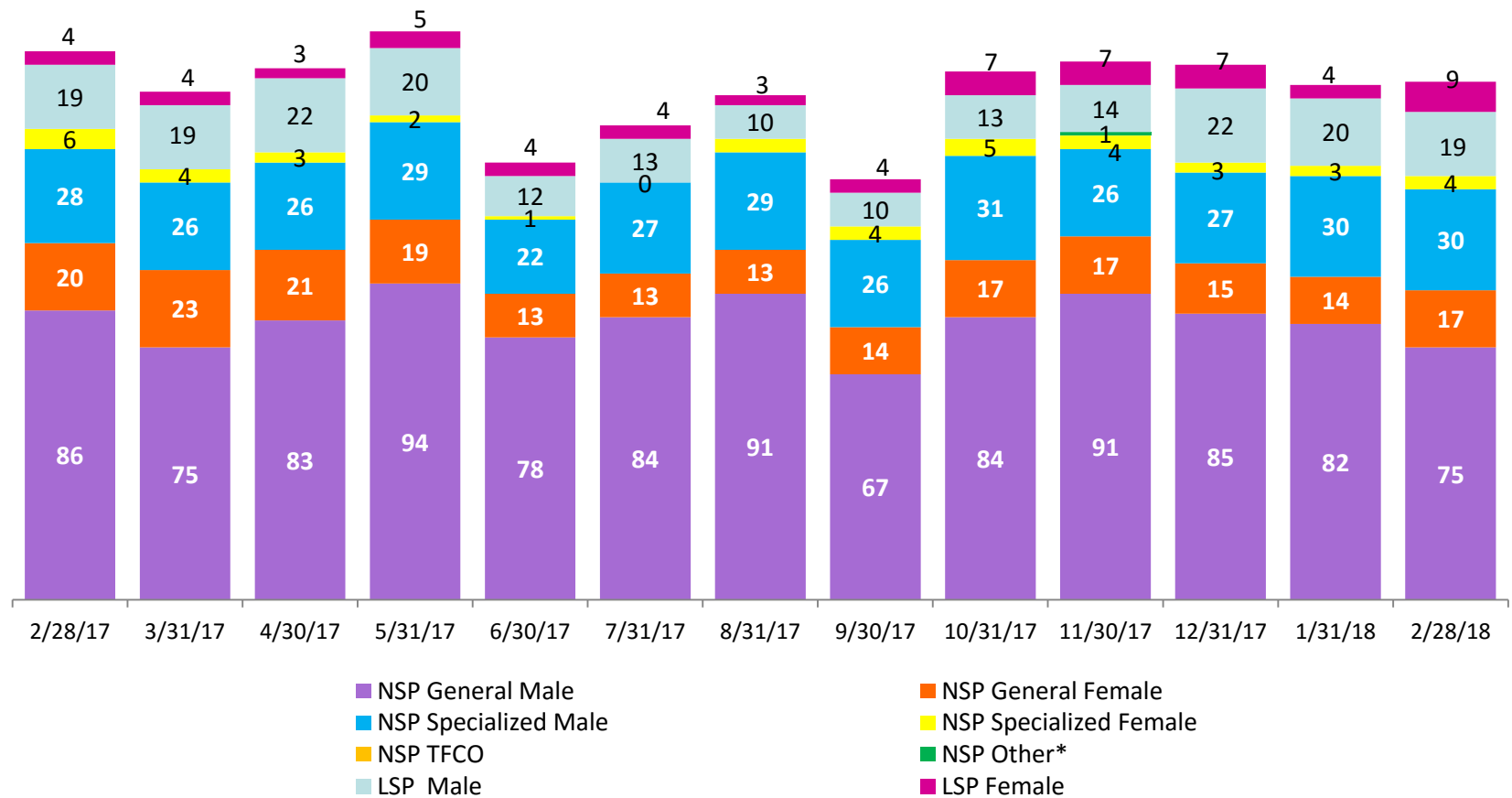
January 2015 – February 2018 (Monthly Total)



*Beginning in December 2015 Close to Home admissions include LSP as well as NSP.

CTH Placement, in 24-hour Care

February 2017 – February 2018 (end of month)

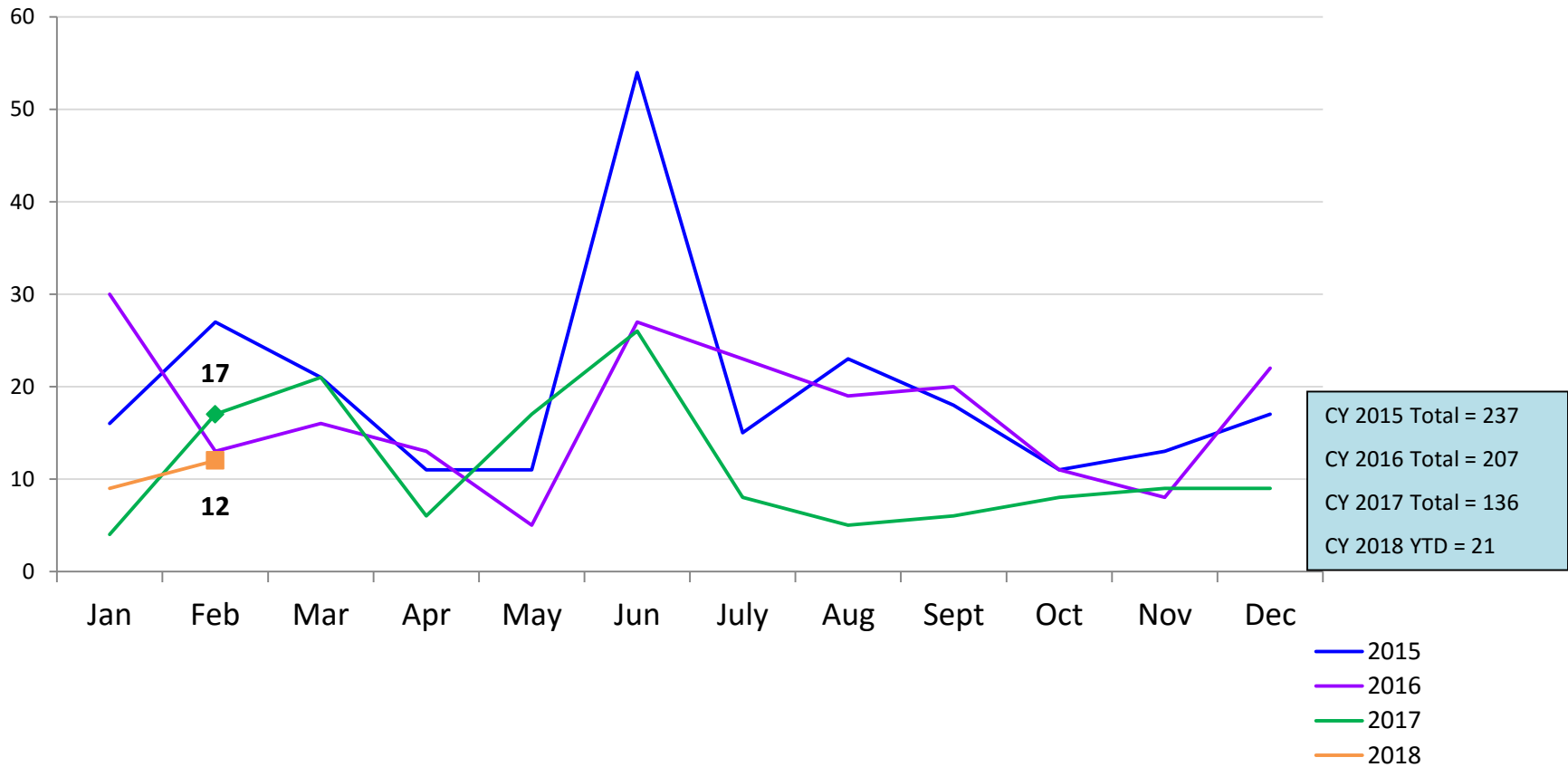


Number in Placement													
	2/28/17	3/31/17	4/30/17	5/31/17	6/30/17	7/31/17	8/31/17	9/30/17	10/31/17	11/30/17	12/31/17	1/31/18	2/28/18
NSP	140	128	133	144	114	124	137	111	137	139	130	129	126
LSP	23	23	25	25	16	17	13	14	20	21	29	24	28

*NSP Other includes youth in child welfare and mother/child placements.

Releases from Close to Home Placement to Aftercare

January 2015 – February 2018 (Monthly Total)



Appendix

Figure 1: SCR Intakes by Borough, DEC 16 – FEB 17 and DEC 17 – FEB 18

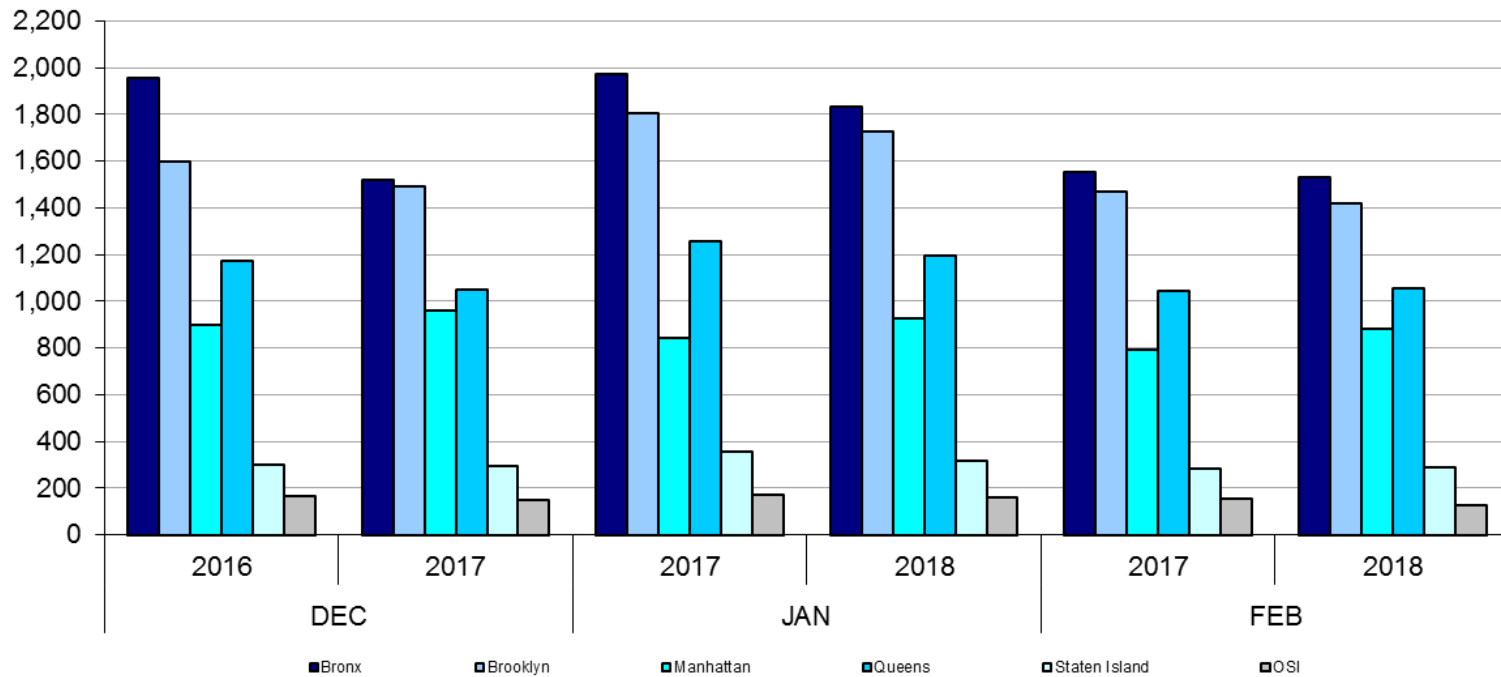


Table 1 - SCR Intake Changes by Borough, DEC 16 – FEB 17 and DEC 17 – FEB 18

Month	Year	Bronx	Brooklyn	Manhattan	Queens	Staten Island	OSI	Other	Total
DEC	2016	1,953	1,597	898	1,173	302	165	200	6,288
	2017	1,519	1,492	958	1,050	292	148	165	5,624
	% Change	-22.2%	-6.6%	6.7%	-10.5%	-3.3%	-10.3%	-17.5%	-10.6%
JAN	2017	1,971	1,803	844	1,258	357	172	212	6,617
	2018	1,834	1,726	929	1,196	318	161	184	6,348
	% Change	-7.0%	-4.3%	10.1%	-4.9%	-10.9%	-6.4%	-13.2%	-4.1%
FEB	2017	1,553	1,467	791	1,042	282	154	176	5,465
	2018	1,531	1,417	881	1,053	289	124	135	5,430
	% Change	-1.4%	-3.4%	11.4%	1.1%	2.5%	-19.5%	-23.3%	-0.6%
Total	2016-17	5,477	4,867	2,533	3,473	941	491	588	18,370
	2017-18	4,884	4,635	2,768	3,299	899	433	484	17,402
	% Change	-10.8%	-4.8%	9.3%	-5.0%	-4.5%	-11.8%	-17.7%	-5.3%

Figure 2: Citywide SCR Intakes by Reporter Group, DEC 16 – FEB 17 and DEC 17 – FEB 18

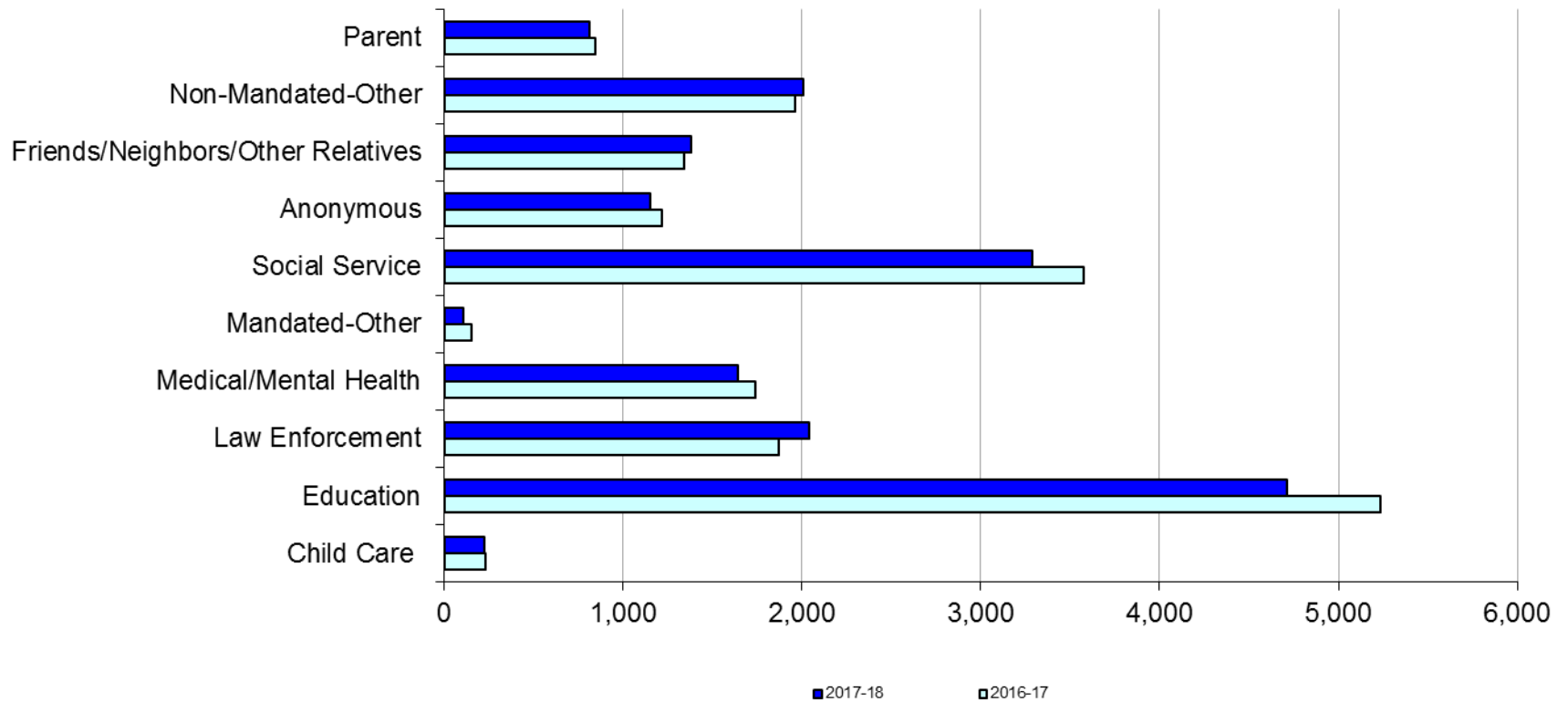
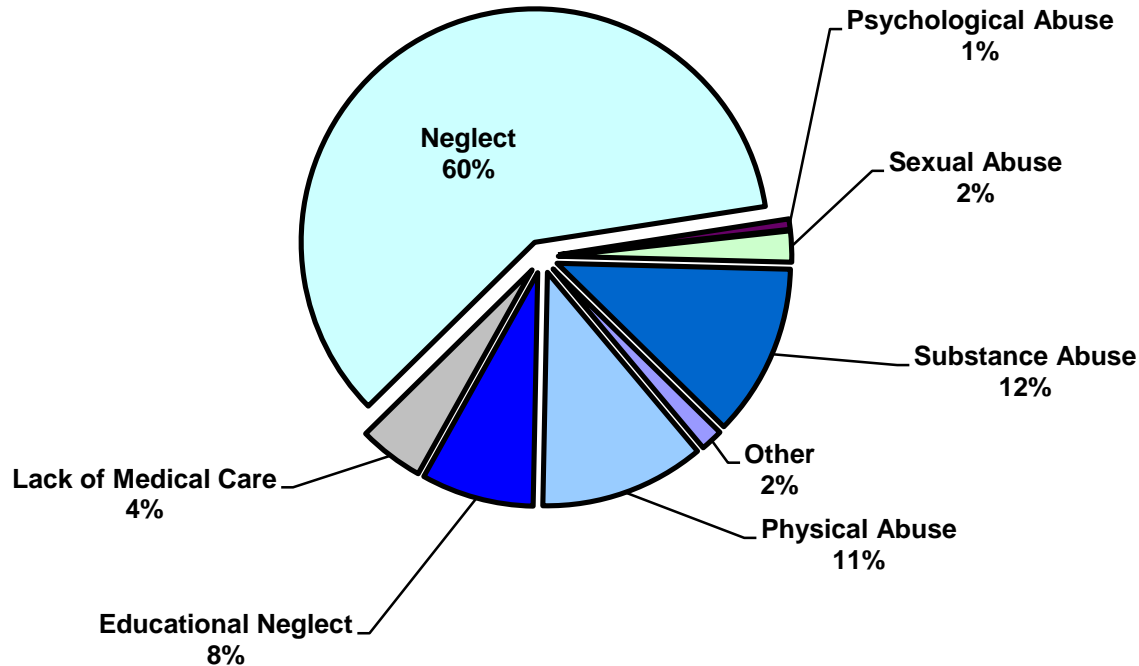


Table 2 - SCR Intakes by Reporter Group, DEC 16 – FEB 17 and DEC 17 – FEB 18

Year	Child Care/ Substitute Care Personnel	Educational Personnel	Law Enforcement	Medical/ Mental Health Personnel	Mandated- Other	Social Service Personnel	Anonymous	Friends/ Neighbors/ Other Relatives	Non- Mandated- Other	Parent	Foster Parent	*Total
Bronx												
2016-17	73	1,701	486	497	33	1,101	351	409	593	225	2	5,477
2017-18	64	1,524	481	436	24	933	296	384	543	197	1	4,884
% Change	-12.3%	-10.4%	-1.0%	-12.3%	-27.3%	-15.3%	-15.7%	-6.1%	-8.4%	-12.4%	--	-10.8%
Brooklyn												
2016-17	46	1,418	568	456	32	879	338	389	512	228	0	4,867
2017-18	59	1,227	616	426	29	847	346	372	493	219	0	4,635
% Change	28.3%	-13.5%	8.5%	-6.6%	-9.4%	-3.6%	2.4%	-4.4%	-3.7%	-3.9%	0.0%	-4.8%
Manhattan												
2016-17	34	567	294	283	33	510	208	211	282	106	0	2,533
2017-18	28	558	392	304	19	515	218	252	362	118	0	2,768
% Change	-17.6%	-1.6%	33.3%	7.4%	-42.4%	1.0%	4.8%	19.4%	28.4%	11.3%	--	9.3%
Queens												
2016-17	34	1,146	327	326	27	711	195	204	360	140	0	3,473
2017-18	39	1,052	336	300	13	625	198	219	384	131	1	3,299
% Change	14.7%	-8.2%	2.8%	-8.0%	-51.9%	-12.1%	1.5%	7.4%	6.7%	-6.4%	0.0%	-5.0%
Staten Island												
2016-17	14	320	91	89	9	148	78	77	75	40	0	941
2017-18	12	272	101	100	7	152	58	76	90	31	0	899
% Change	-14.3%	-15.0%	11.0%	12.4%	-22.2%	2.7%	-25.6%	-1.3%	20.0%	-22.5%	--	-4.5%
OSI												
2016-17	24	42	26	41	12	96	34	28	105	82	1	491
2017-18	19	41	18	35	9	85	20	32	101	70	3	433
% Change	-20.8%	-2.4%	-30.8%	-14.6%	-25.0%	-11.5%	-41.2%	14.3%	-3.8%	-14.6%	0.0%	-11.8%
Other												
2016-17	3	44	80	49	4	130	14	23	32	26	0	588
2017-18	5	36	93	42	2	132	15	42	34	45	0	484
% Change	66.7%	-18.2%	16.3%	-14.3%	-50.0%	1.5%	7.1%	82.6%	6.3%	73.1%	0.0%	-17.7%
Citywide												
2016-17	228	5,238	1,872	1,741	150	3,575	1,218	1,341	1,959	847	3	18,370
2017-18	226	4,710	2,037	1,643	103	3,289	1,151	1,377	2,007	811	5	17,402
% Change	-0.9%	-10.1%	8.8%	-5.6%	-31.3%	-8.0%	-5.5%	2.7%	2.5%	-4.3%	66.7%	-5.3%

*There is a small number of intakes with unknown reporter that is included in the totals.

Figure 3: SCR Allegations, DEC 17 – FEB 18



Total Allegations = 41,783

Allegations are grouped as follows: Physical Abuse - burn, fatality, fracture, choking, twisting, shaking, excessive corporal punishment, internal injuries, lacerations, bruises, welts, poisoning, noxious substances; Educational Neglect – educational neglect; Lack of Medical Care – lack of medical care; Neglect - inadequate guardianship, inadequate food, clothing, shelter, lack of supervision, malnutrition, failure to thrive, swelling, dislocations, sprains; Psychological Abuse - isolation, emotional neglect; Sexual Abuse – sexual abuse; Substance Abuse - parental drug use, child drug use; and Other - abandonment, inappropriate custodial conduct.

Table 3 - SCR Allegations, DEC 16 – FEB 17 and DEC 17 – FEB 18

Year	Physical Abuse	Educational Neglect	Lack of Medical Care	Neglect	Psychological Abuse	Sexual Abuse	Substance Abuse	Other	Total
Bronx									
2016-17	1,544	1,573	713	8,461	101	283	1,767	126	14,568
2017-18	1,341	1,260	595	7,284	65	235	1,471	91	12,342
% Change	-13.1%	-19.9%	-16.5%	-13.9%	-35.6%	-17.0%	-16.8%	-27.8%	-15.3%
Brooklyn									
2016-17	1,486	1,164	503	7,325	78	258	1,489	130	12,433
2017-18	1,285	805	473	7,014	75	267	1,364	153	11,436
% Change	-13.5%	-30.8%	-6.0%	-4.2%	-3.8%	3.5%	-8.4%	17.7%	-8.0%
Manhattan									
2016-17	590	463	263	3311	43	121	779	56	5,626
2017-18	581	411	256	3104	48	71	658	36	5,165
% Change	-1.5%	-11.2%	-2.7%	-6.3%	11.6%	-41.3%	-15.5%	-35.7%	-8.2%
Queens									
2016-17	1,112	589	342	4,880	72	131	955	203	8,284
2017-18	993	493	338	4,539	76	171	894	191	7,695
% Change	-10.7%	-16.3%	-1.2%	-7.0%	5.6%	30.5%	-6.4%	-5.9%	-7.1%
Staten Island									
2016-17	309	209	91	1,522	22	46	458	34	2,691
2017-18	244	200	114	1,456	19	46	331	77	2,487
% Change	-21.0%	-4.3%	25.3%	-4.3%	-13.6%	0.0%	-27.7%	126.5%	-7.6%
OSI									
2016-17	264	58	58	1,242	5	75	164	19	1,885
2017-18	215	43	64	1,085	7	80	140	6	1,640
% Change	-18.6%	-25.9%	10.3%	-12.6%	40.0%	6.7%	-14.6%	-68.4%	-13.0%
Other									
2016-17	102	57	34	565	8	24	108	85	983
2017-18	115	46	47	551	11	26	128	94	1,018
% Change	12.7%	-19.3%	38.2%	-2.5%	37.5%	8.3%	18.5%	10.6%	3.6%
Citywide									
2016-17	5,407	4,113	2,004	27,306	329	938	5,720	653	46,470
2017-18	4,774	3,258	1,887	25,033	301	896	4,986	648	41,783
% Change	-11.7%	-20.8%	-5.8%	-8.3%	-8.5%	-4.5%	-12.8%	-0.8%	-10.1%

**TABLE 4 - Child Welfare Preventive Cases
New and Closed
January 2015 to February 2018**

Month	New Cases	Closed Cases
2015		
Jan-15	736	792
Feb-15	910	751
Mar-15	1,131	831
Apr-15	987	932
May-15	921	999
Jun-15	1,080	930
Jul-15	906	1,217
Aug-15	899	1,064
Sep-15	768	964
Oct-15	754	889
Nov-15	751	807
Dec-15	1,015	881
2016		
Jan-16	797	770
Feb-16	900	795
Mar-16	1,029	978
Apr-16	836	892
May-16	890	966
Jun-16	996	935
Jul-16	842	1,069
Aug-16	897	1,006
Sep-16	821	850
Oct-16	776	627
Nov-16	728	490
Dec-16	816	462
2017		
Jan-17	551	449
Feb-17	602	920
Mar-17	864	1,032
Apr-17	645	780
May-17	790	925
Jun-17	908	944
Jul-17	765	852
Aug-17	875	864
Sep-17	841	747
Oct-17	870	762
Nov-17	778	737
Dec-17	817	728
2018		
Jan-18	724	567
Feb-18	746	788

**Table 5 - Referrals to Child Welfare Preventive Services by Source
January 2015 to February 2018**

Month	Total Referrals	Division of Child Protection	Foster Care Agencies	PPRS Transfer	School	Self	Other Sources*
2015							
Jan-15	1,430	74.4%	1.6%	8.7%	1.8%	3.8%	9.7%
Feb-15	1,538	76.5%	0.8%	8.1%	1.8%	4.7%	8.2%
Mar-15	1,798	74.6%	0.9%	7.3%	1.6%	4.8%	10.8%
Apr-15	1,719	78.2%	1.3%	7.2%	0.6%	3.5%	9.1%
May-15	1,561	77.2%	1.0%	5.1%	1.5%	4.5%	10.8%
Jun-15	1,716	77.4%	1.1%	7.7%	1.2%	3.5%	9.1%
Jul-15	1,511	79.6%	0.9%	7.2%	0.3%	3.8%	8.2%
Aug-15	1,418	79.3%	2.2%	7.8%	0.2%	3.1%	7.5%
Sep-15	1,209	72.1%	2.8%	10.4%	0.5%	5.5%	8.6%
Oct-15	1,338	70.4%	1.9%	8.3%	2.1%	5.8%	11.6%
Nov-15	1,220	68.2%	1.8%	9.6%	1.4%	6.2%	12.8%
Dec-15	1,526	73.5%	1.6%	8.0%	2.0%	5.0%	9.9%
2016							
Jan-16	1,370	73.6%	1.6%	8.2%	0.7%	5.4%	10.6%
Feb-16	1,436	75.8%	2.2%	7.8%	1.0%	3.8%	9.3%
Mar-16	1,557	72.0%	2.1%	8.8%	1.0%	4.6%	11.4%
Apr-16	1,378	76.1%	1.5%	7.4%	1.5%	3.5%	10.0%
May-16	1,386	73.4%	1.4%	8.7%	1.0%	4.7%	10.8%
Jun-16	1,564	77.2%	2.4%	6.2%	1.5%	4.1%	8.6%
Jul-16	1,338	80.3%	1.7%	6.4%	1.0%	4.2%	6.4%
Aug-16	1,385	79.1%	1.8%	7.1%	0.4%	4.0%	7.6%
Sep-16	1,297	77.8%	2.1%	7.5%	0.8%	4.5%	7.4%
Oct-16	1,247	70.1%	2.0%	7.6%	1.5%	5.9%	12.9%
Nov-16	1,229	67.8%	2.0%	7.8%	1.2%	5.5%	15.8%
Dec-16	1,175	76.0%	1.5%	7.1%	1.3%	3.8%	10.3%
2017							
Jan-17	1,046	78.5%	1.4%	6.7%	0.7%	3.1%	9.7%
Feb-17	1,067	77.7%	0.8%	6.7%	0.8%	3.8%	10.1%
Mar-17	1,383	79.1%	0.6%	6.9%	0.9%	4.0%	8.5%
Apr-17	1,116	81.2%	1.0%	5.9%	1.1%	1.4%	9.4%
May-17	1,335	81.9%	0.9%	5.5%	1.3%	2.8%	7.6%
Jun-17	1,449	82.3%	0.8%	5.9%	1.2%	2.9%	6.9%
Jul-17	1,273	83.3%	0.9%	7.9%	0.7%	1.9%	5.3%
Aug-17	1,429	82.7%	0.6%	9.3%	0.3%	1.7%	5.2%
Sep-17	1,383	79.6%	1.6%	7.7%	0.8%	2.8%	7.4%
Oct-17	1,489	77.5%	1.5%	7.5%	1.0%	3.1%	9.4%
Nov-17	1,235	75.1%	1.5%	8.8%	2.2%	3.6%	8.8%
Dec-17	1,227	70.5%	1.6%	10.2%	2.4%	3.7%	11.5%
2018							
Jan-18	1,401	74.6%	1.5%	10.6%	1.4%	2.9%	8.9%
Feb-18	1,300	79.5%	1.3%	7.6%	1.2%	2.5%	7.9%

*Other Community Sources includes the Department of Homeless Services, Family Court, FAP, Hospitals and Medical facilities, the NYC Housing Authority, Probation, and Sponsor Agencies.