

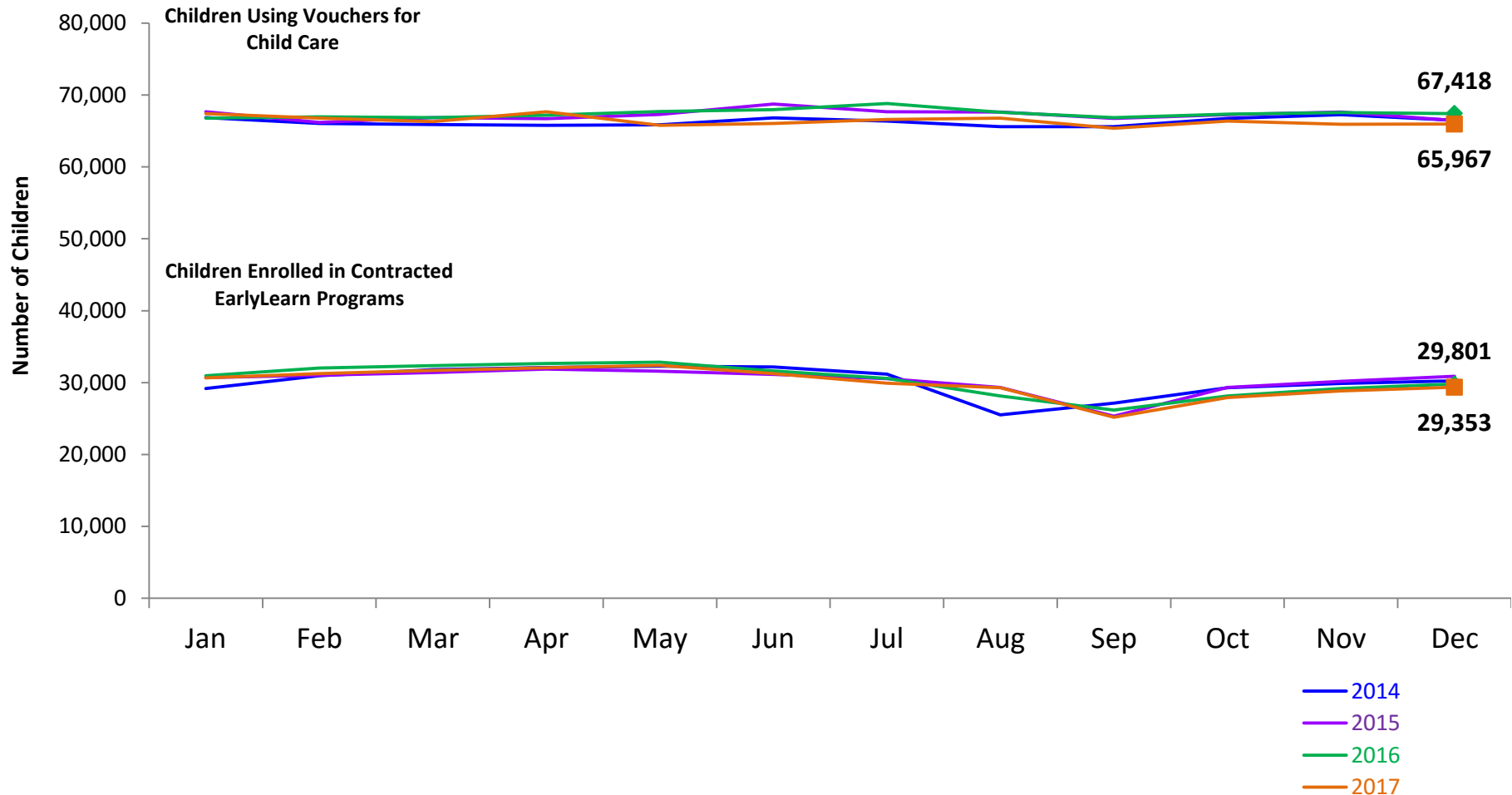
FLASH

monthly indicator

REPORT

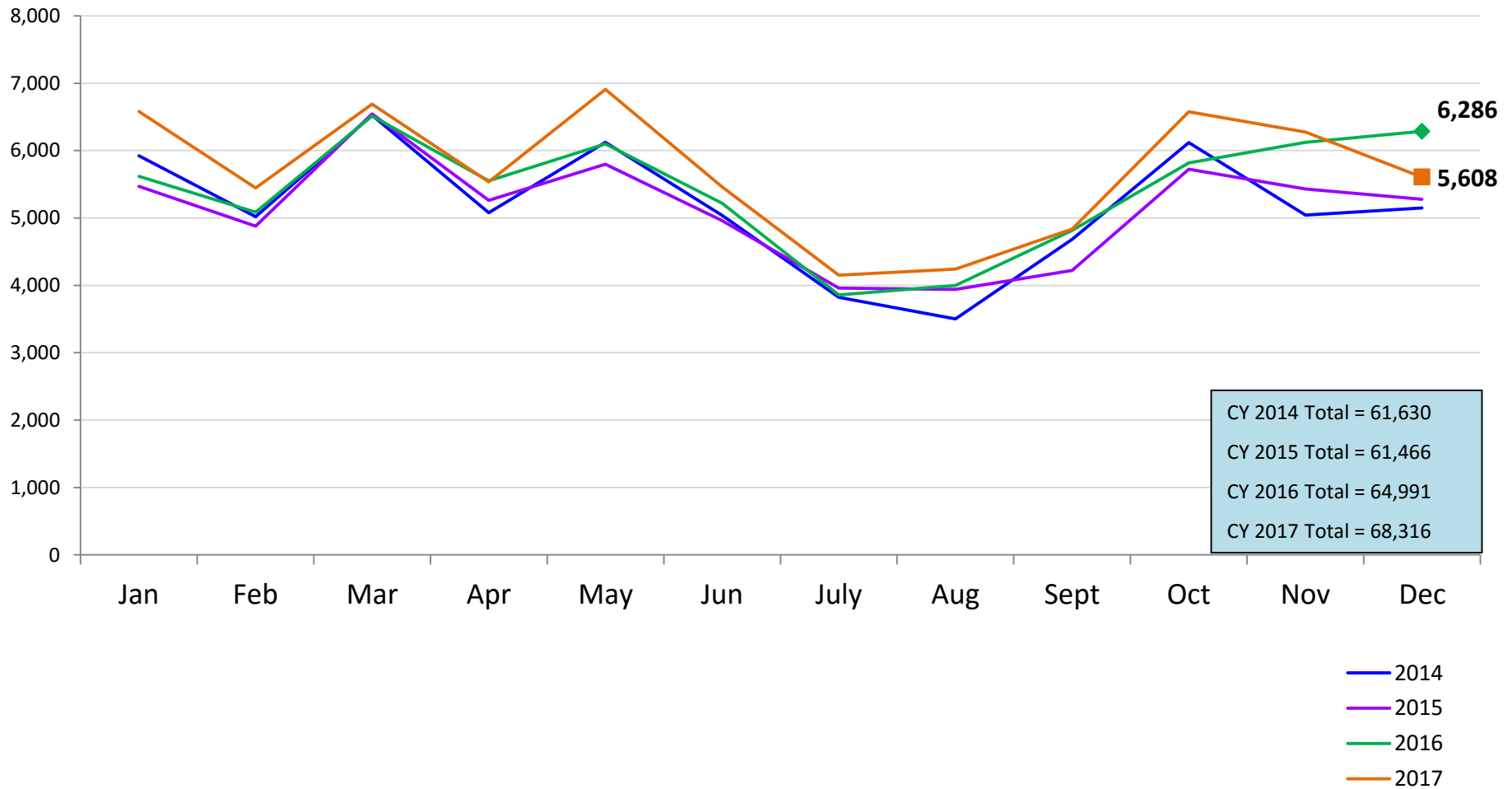
January 2018

**Children Enrolled in Contracted EarlyLearn Programs and
Children Using Vouchers for Child Care**
January 2014 – December 2017(End of Month)

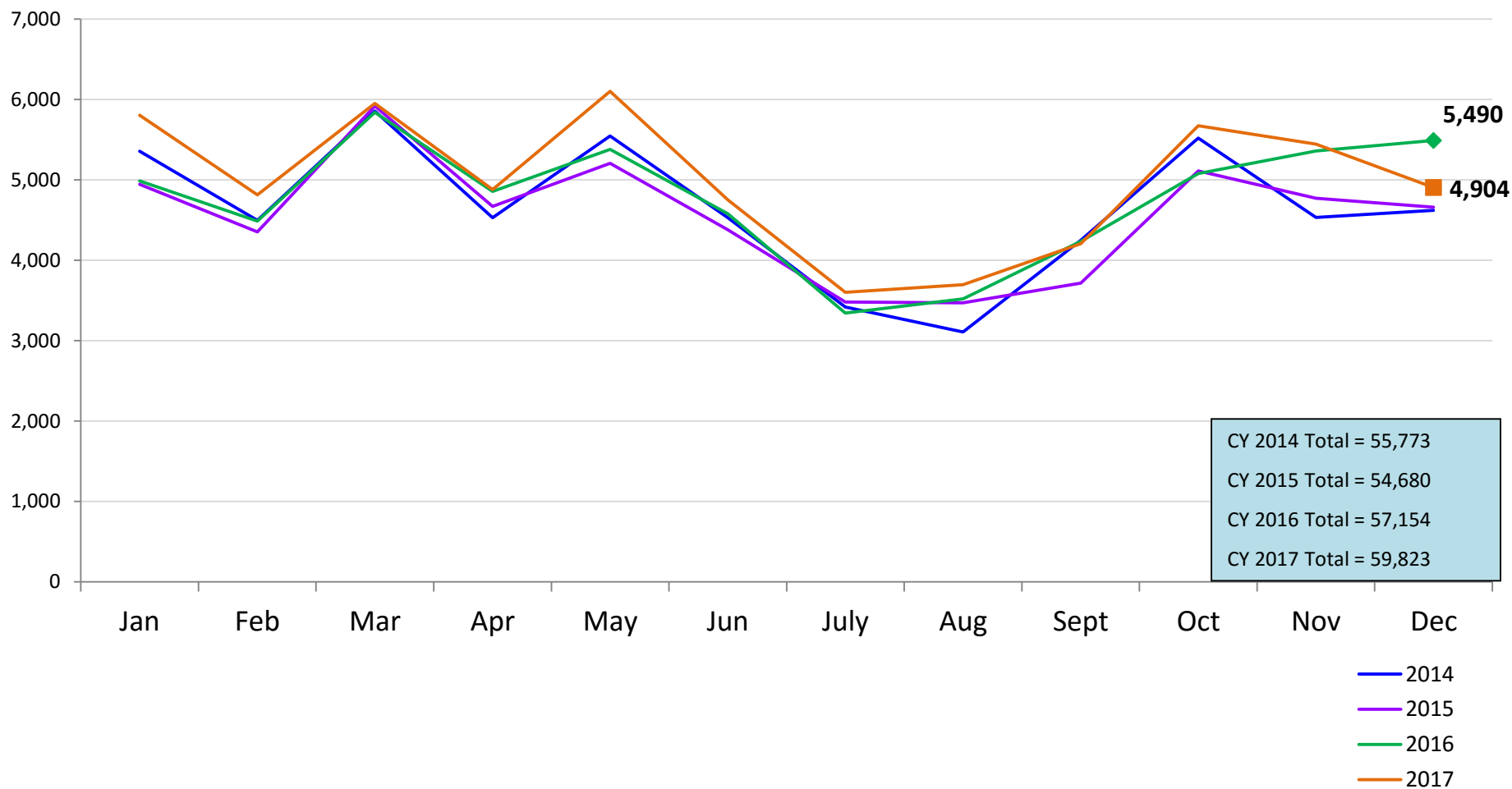


SCR Intakes

January 2014 – December 2017 (Monthly Total)

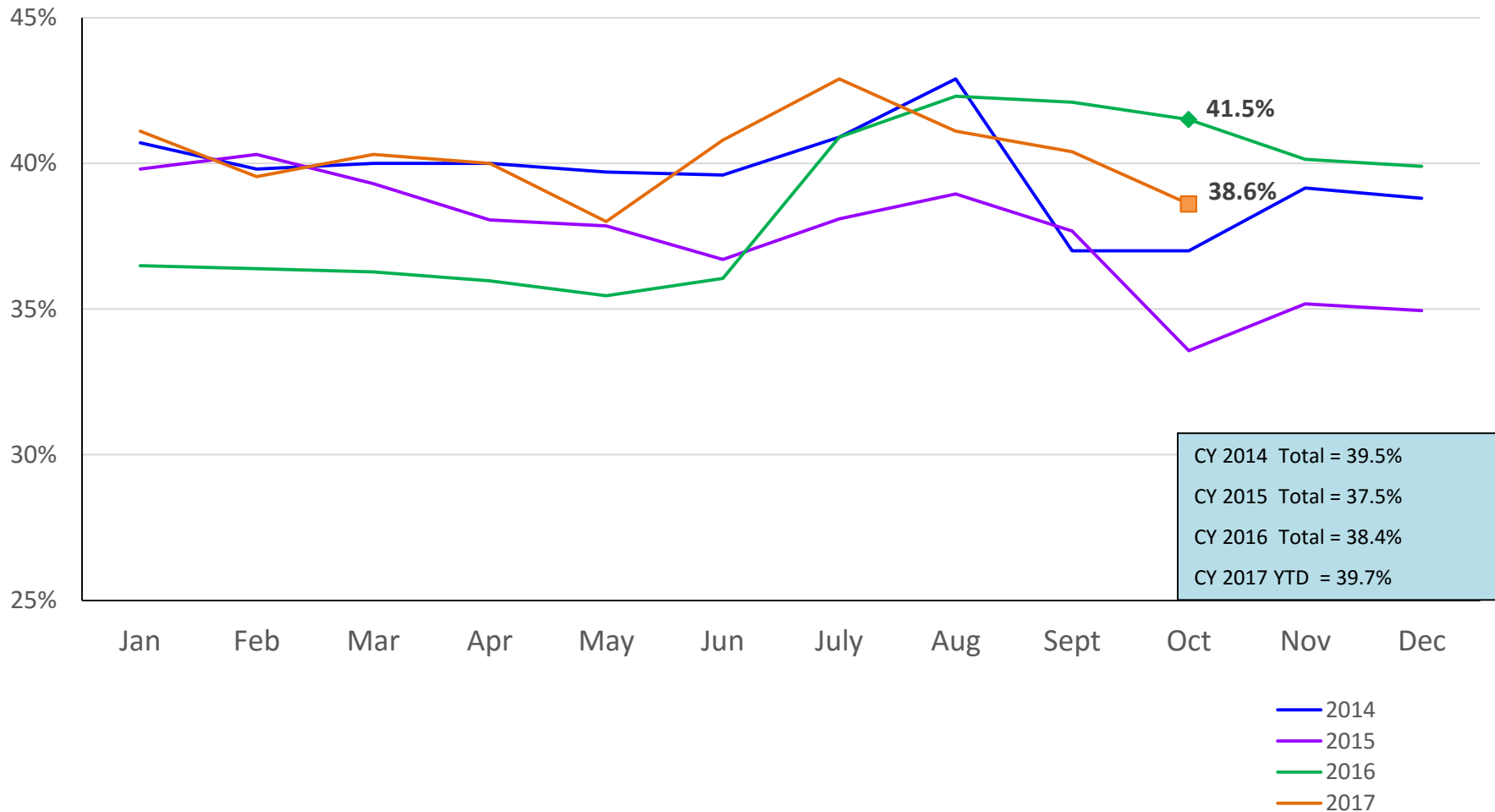


SCR Consolidated Investigations January 2014 – December 2017 (Monthly Total)



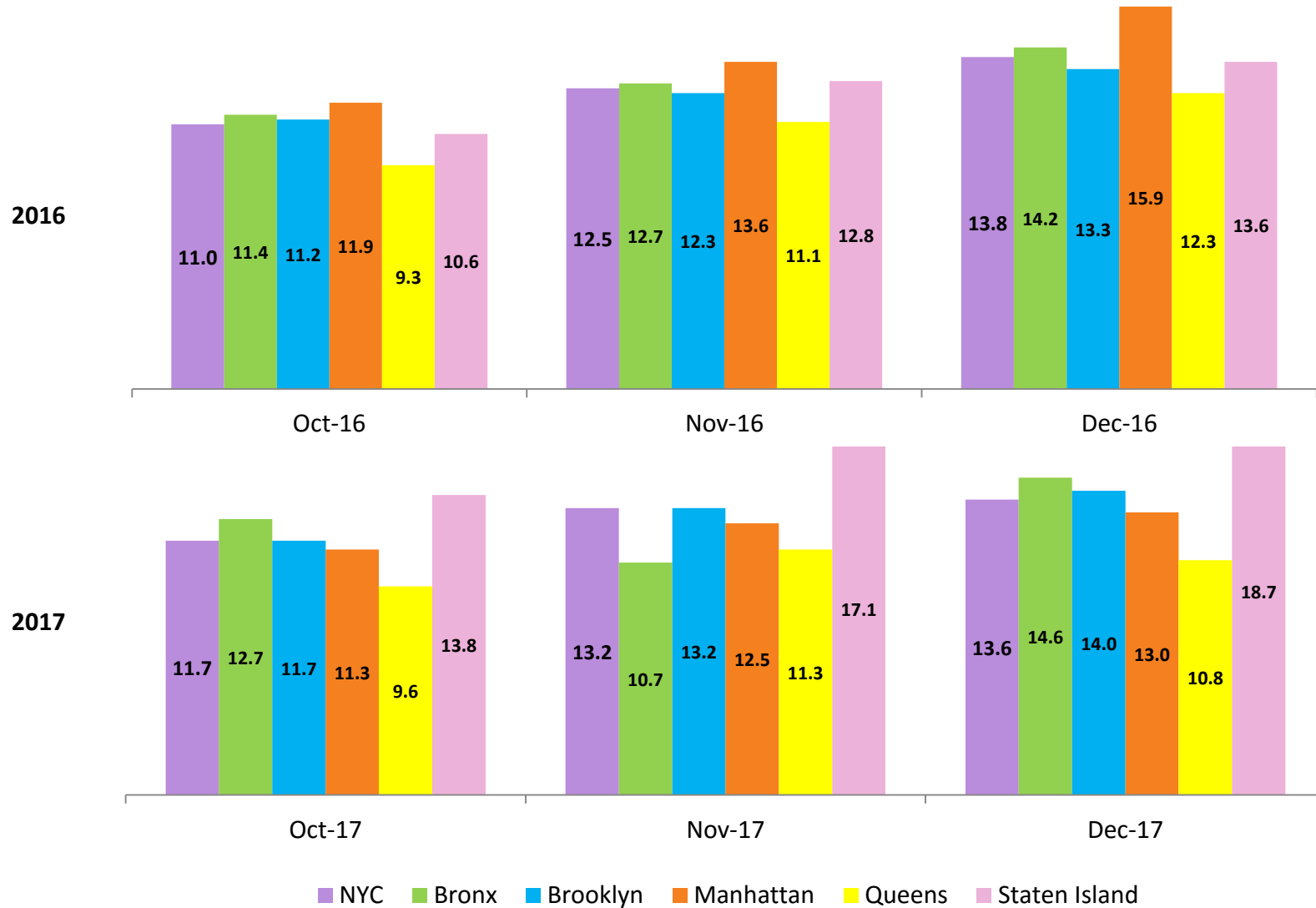
SCR Investigation Indication Rate

January 2014 – October 2017



Average P/D Combined Caseload*

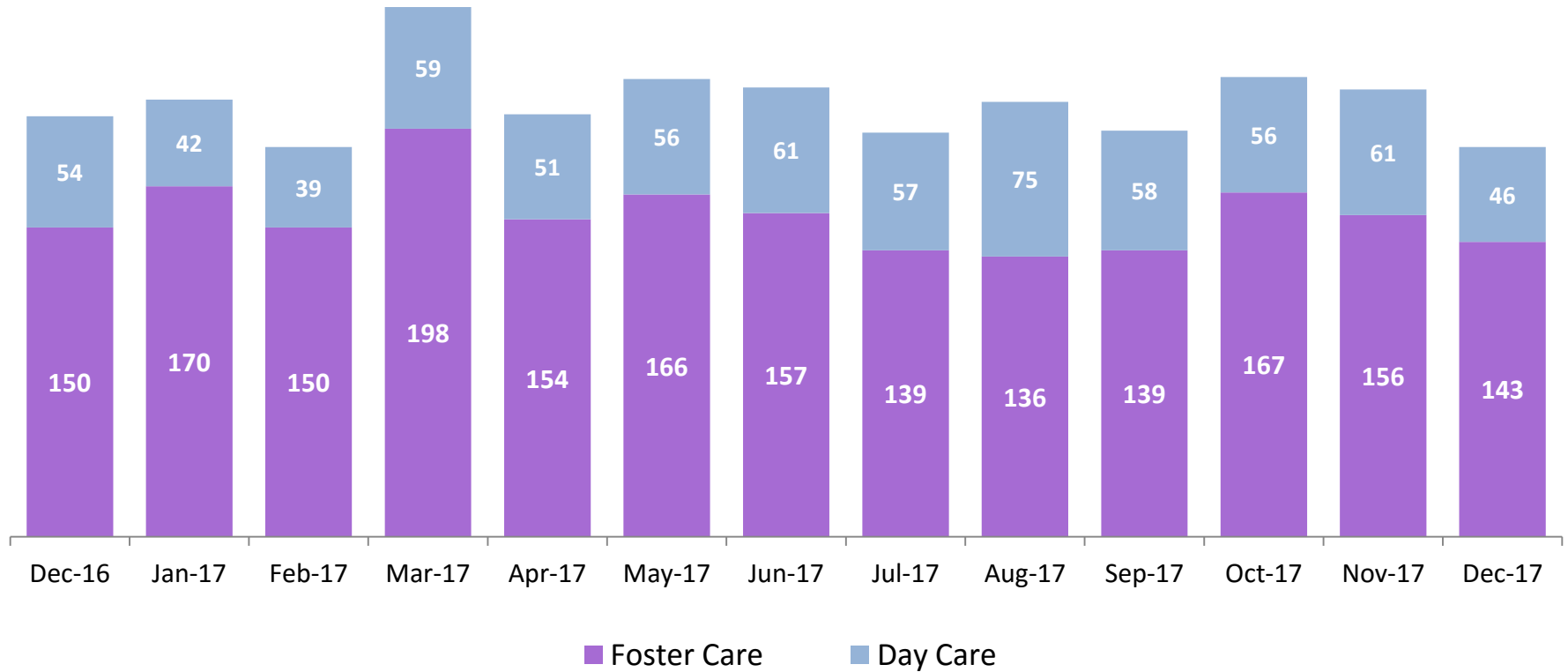
October – December 2016 & October – December 2017



* Caseloads are of protective/diagnostic caseworkers only and exclude the caseloads carried by Level I and Level II Supervisors.

OSI Foster Care and Day Care Investigations

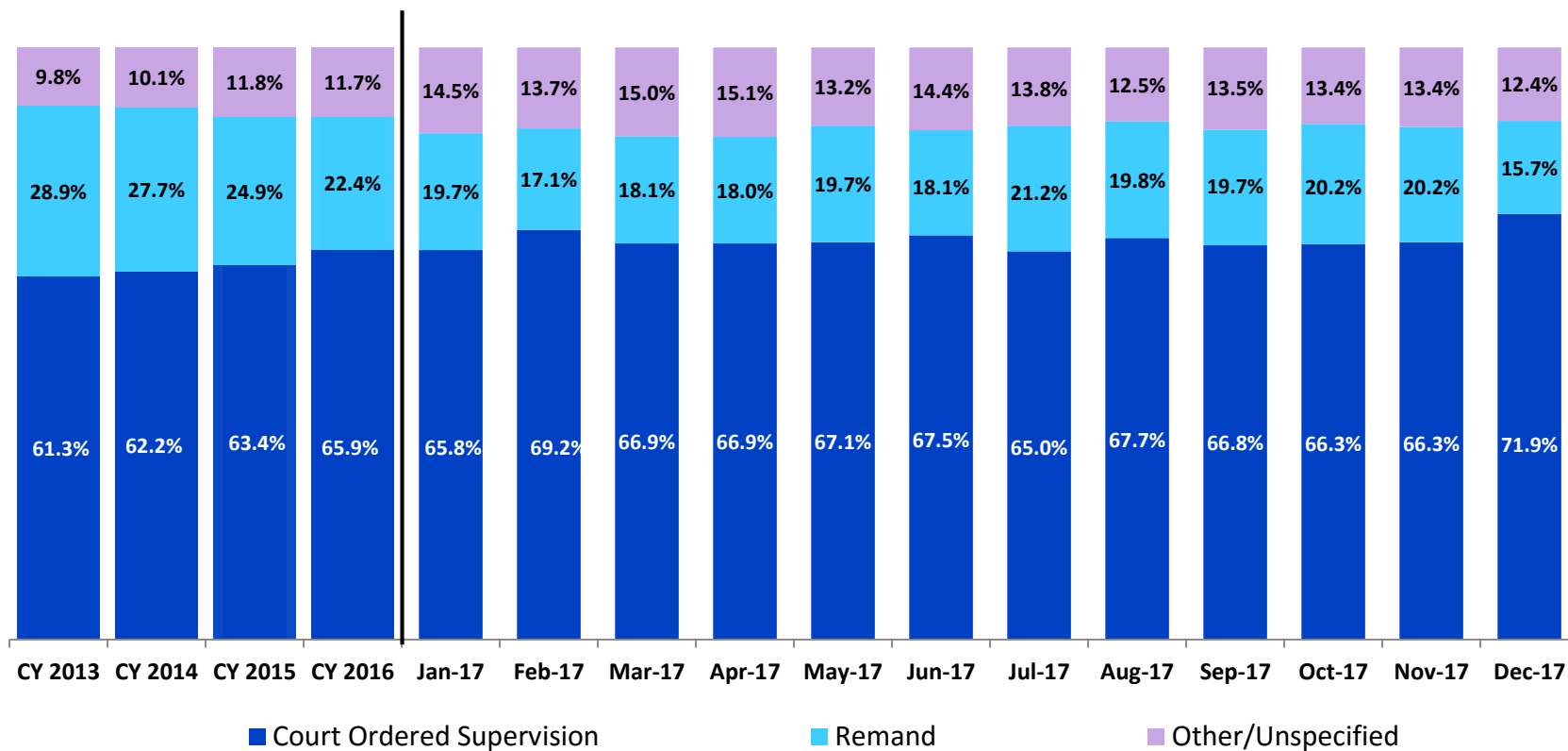
December 2016 – December 2017



	Dec 2016	Jan 2017	Feb 2017	Mar 2017	Apr 2017	May 2017	Jun 2017	Jul 2017	Aug 2017	Sep 2017	Oct 2017	Nov 2017	Dec 2017
Number of Investigations	204	212	189	257	205	222	218	196	211	197	223	217	189

Article 10 Filings and Initial Hearing Outcomes, Children

CY 2013 – CY 2017

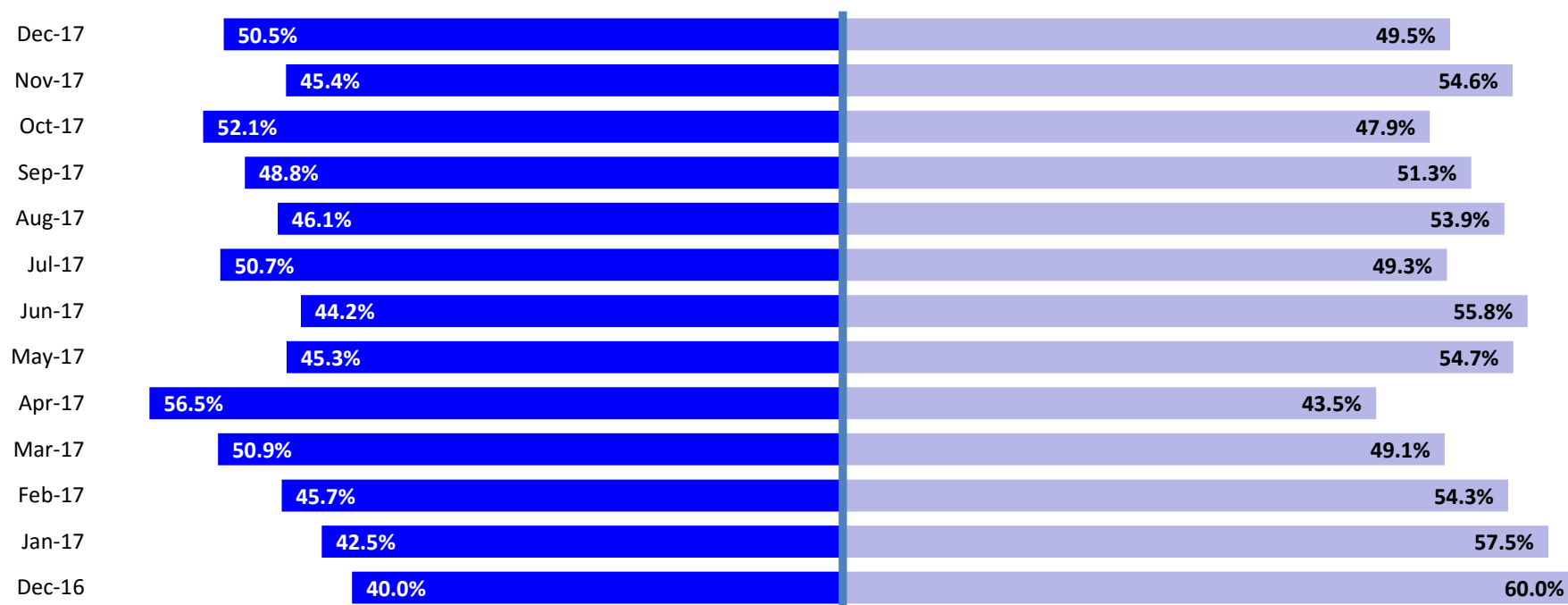


	CY 2013	CY 2014	CY 2015	CY 2016	Jan 2017	Feb 2017	Mar 2017	April 2017	May 2017	Jun 2017	Jul 2017	Aug 2017	Sep 2017	Oct 2017	Nov 2017	Dec 2017
Children with Article 10 Filings	9,318	9,900	9,958	10,973	1,312	1,100	1,490	1,275	1,468	1,410	1,276	1,356	1,230	1,501	1,221	1,336

Note: The category "Other/Unspecified" includes released with no supervision, no order issued and no outcome specified.

Remands Approved at Initial Article 10 Hearing by Removal Status

December 2016 – December 2017

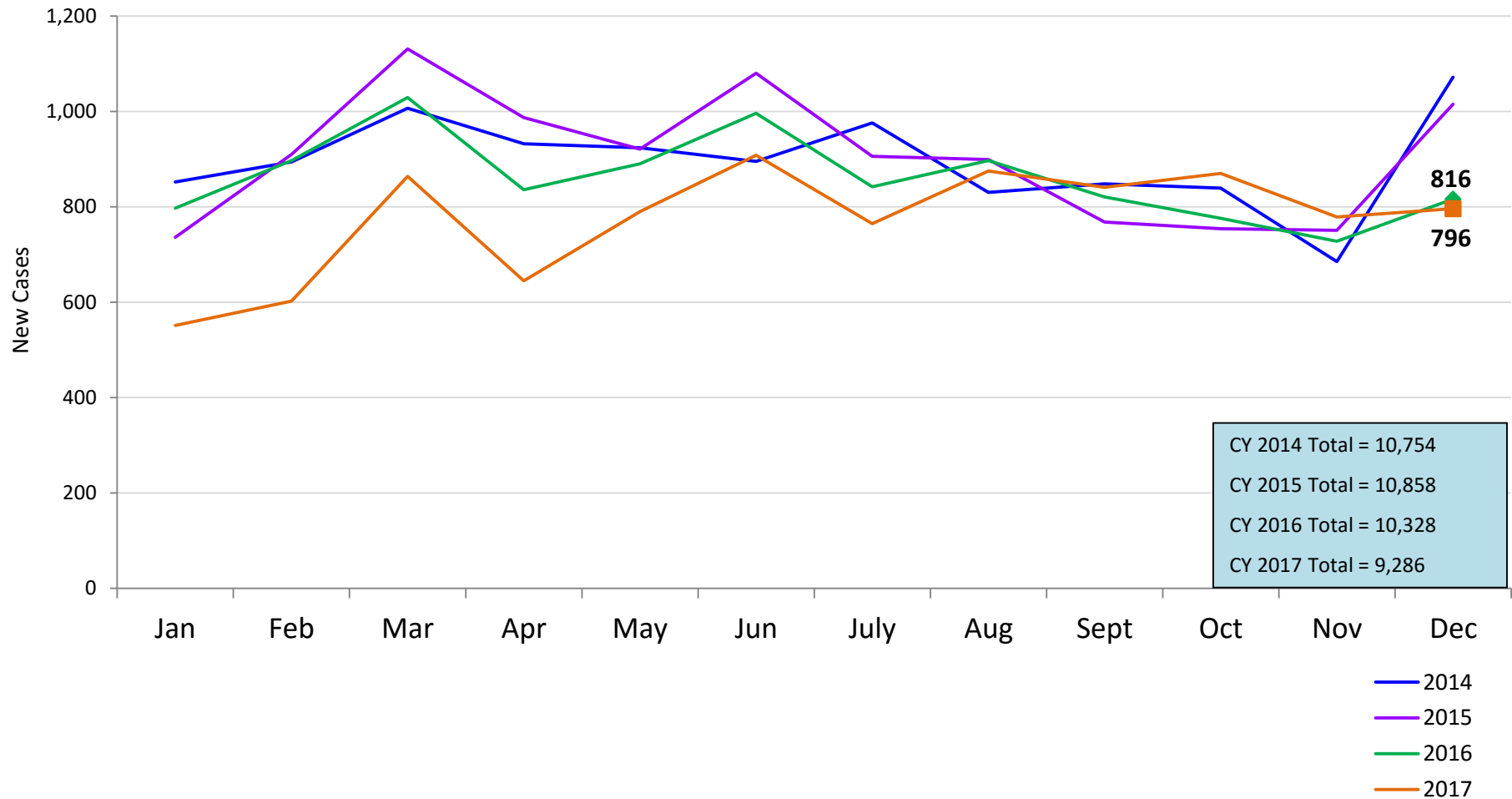


■ Pre-Filing Emergency Removals (court approved at initial hearing) ■ Post-Filing Removals (court ordered at initial hearing)

	Dec 2016	Jan 2017	Feb 2017	Mar 2017	Apr 2017	May 2017	Jun2 017	Jul 2017	Aug 2017	Sep 2017	Oct 2017	Nov 2017	Dec 2017
Children Remanded	280	259	188	269	230	289	249	270	267	240	305	238	210

New Child Welfare Preventive Cases*

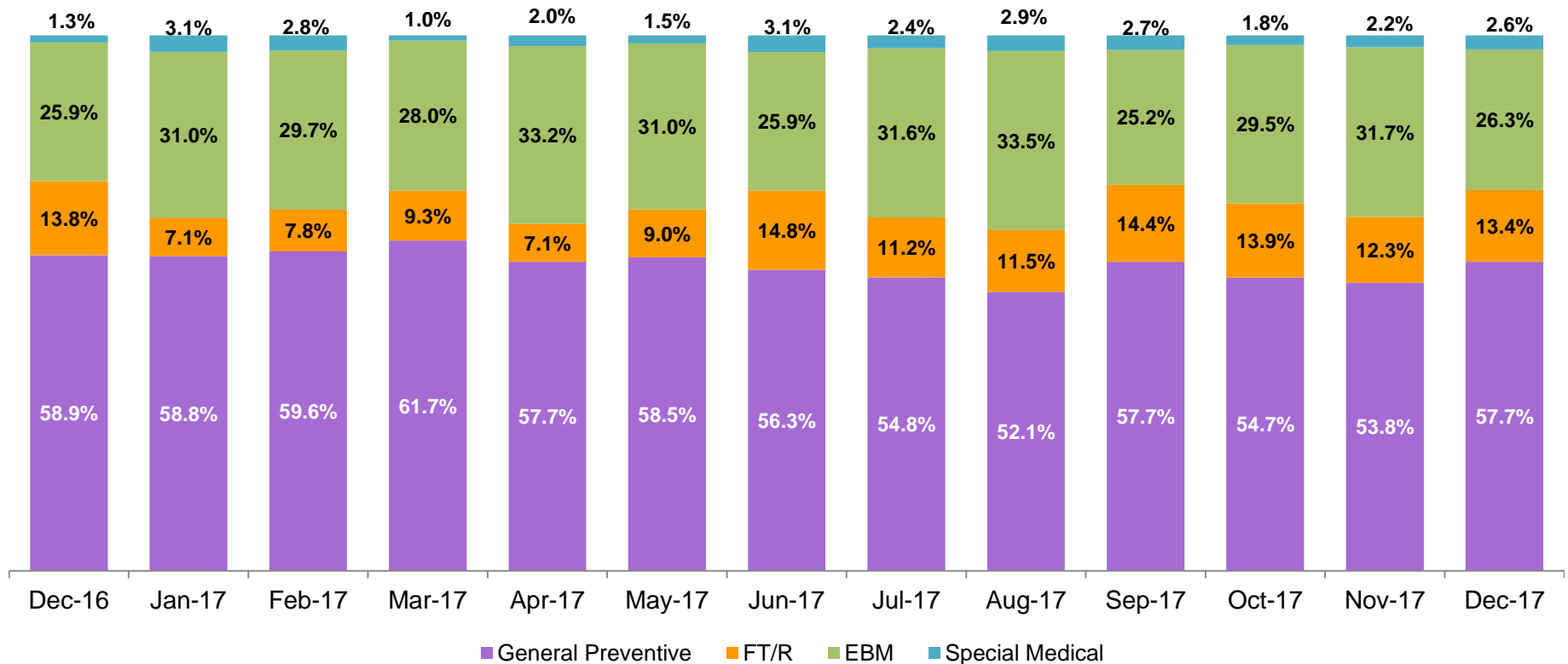
January 2014 – December 2017



* New preventive cases do not include cases transferred from one preventive program to another. See Pages 33 and 34 of the Appendix for supporting data.

New Child Welfare Preventive Cases by Program Type *

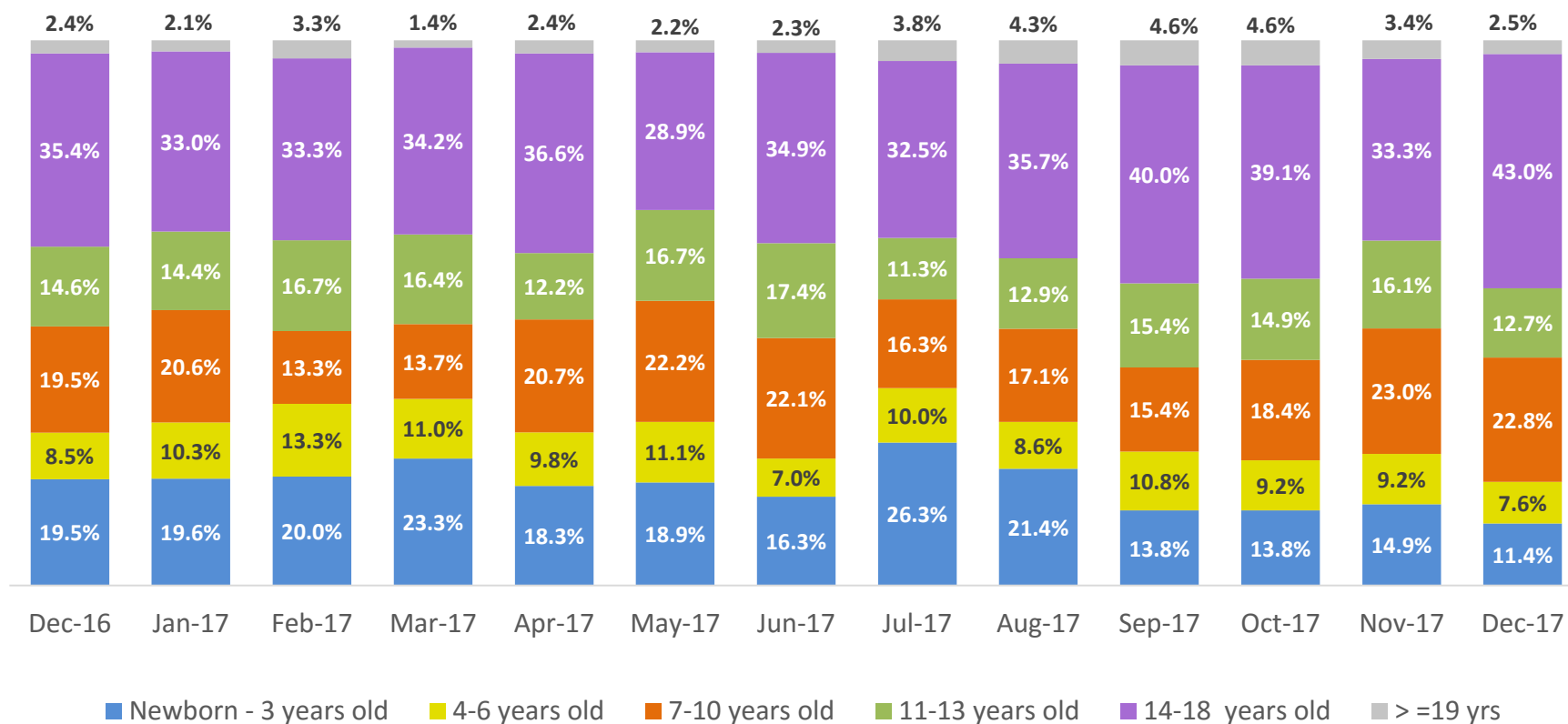
December 2016 – December 2017



	Dec 2016	Jan 2017	Feb 2017	Mar 2017	Apr 2017	May 2017	Jun 2017	Jul 2017	Aug 2017	Sep 2017	Oct 2017	Nov 2017	Dec 2017
Number of New Preventive Cases	816	551	602	864	645	790	908	765	875	841	870	779	796

* New preventive cases exclude cases transferred from one preventive program to another.

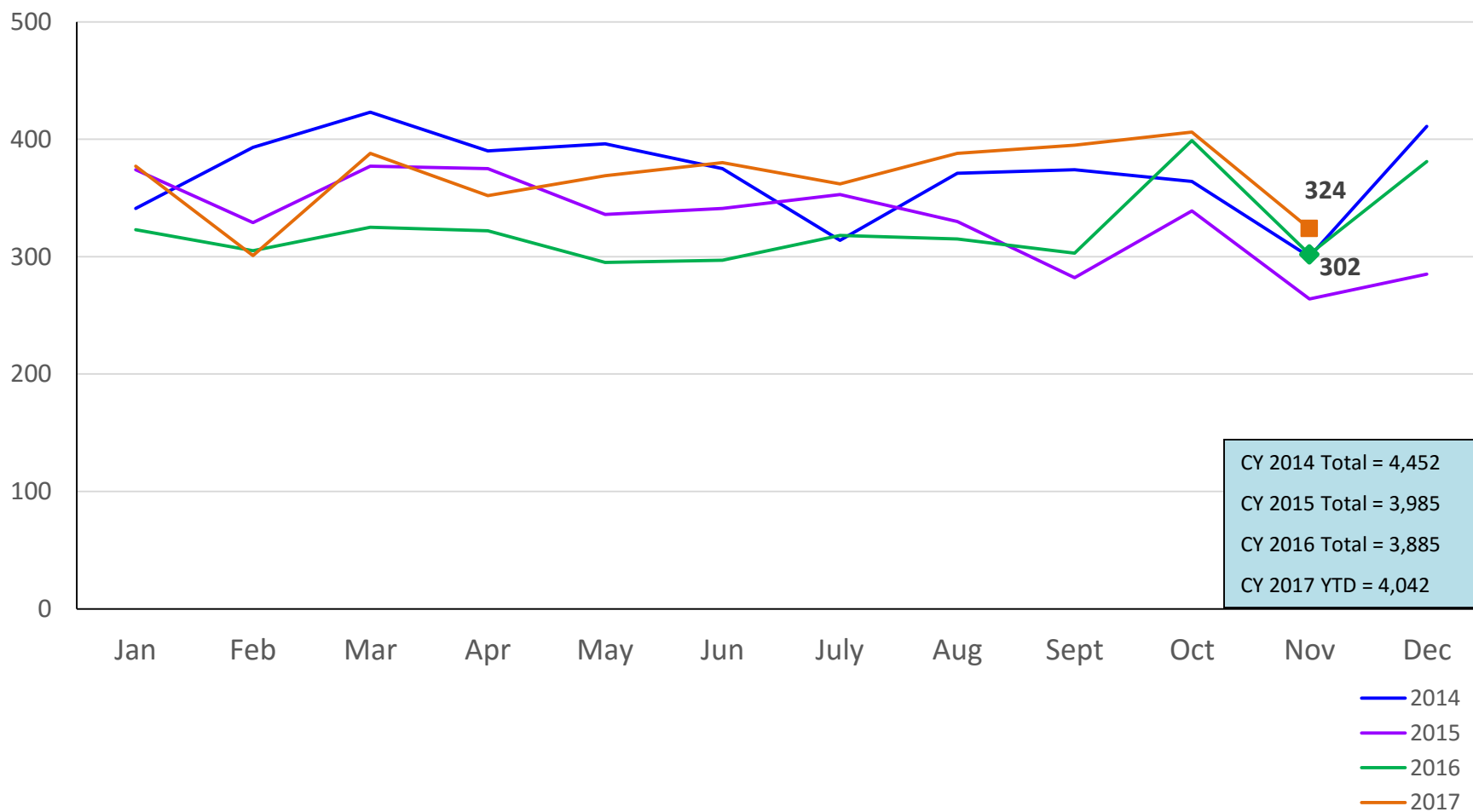
Average Daily Children's Center Population December 2016 – December 2017



	Dec 2016	Jan 2017	Feb 2017	Mar 2017	Apr 2017	May 2017	Jun 2017	Jul 2017	Aug 2017	Sep 2017	Oct 2017	Nov 2017	Dec 2017
Average Number of Children	82	97	60	73	82	90	86	80	70	65	87	87	79

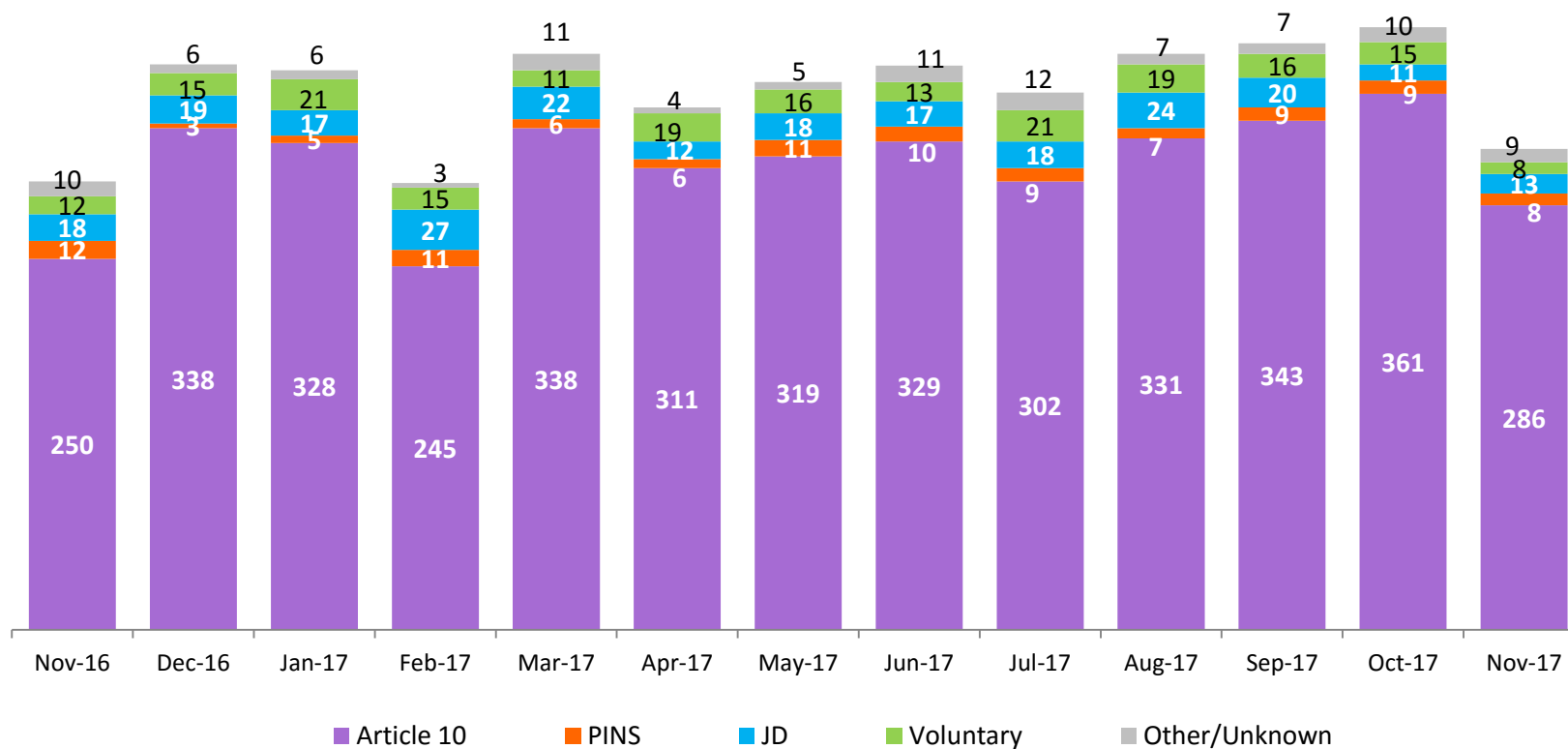
New Monthly Placements of Children into Foster Care

January 2014 – November 2017



Reason for New Placements of Children into Foster Care

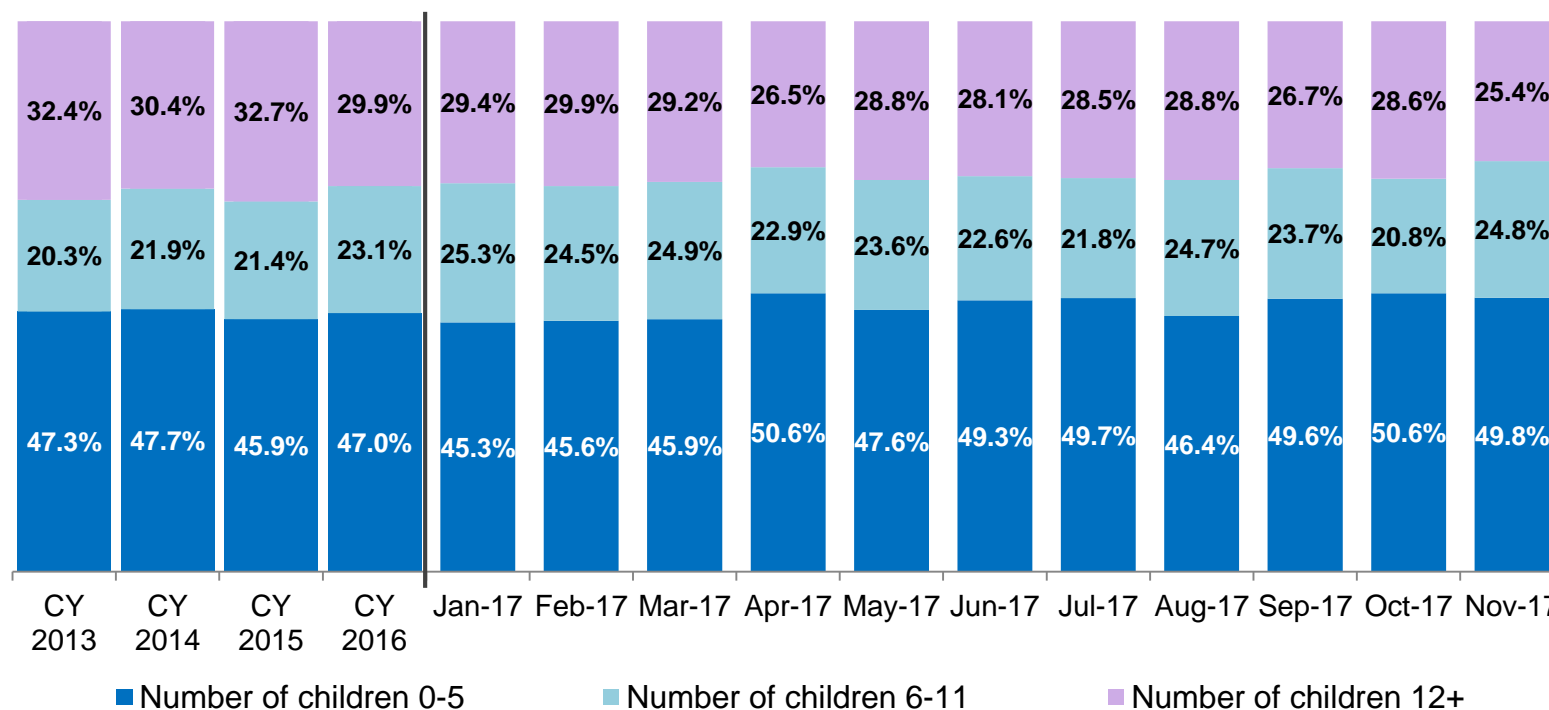
November 2016 – November 2017



	Nov 2016	Dec 2016	Jan 2017	Feb 2017	Mar 2017	Apr 2017	May 2017	Jun 2017	Jul 2017	Aug 2017	Sep 2017	Oct 2017	Nov 2017
Number of Placements	302	381	377	301	388	352	369	380	362	388	395	406	324

New Placements of Children into Foster Care* by Age

CY 2013 - November 2017

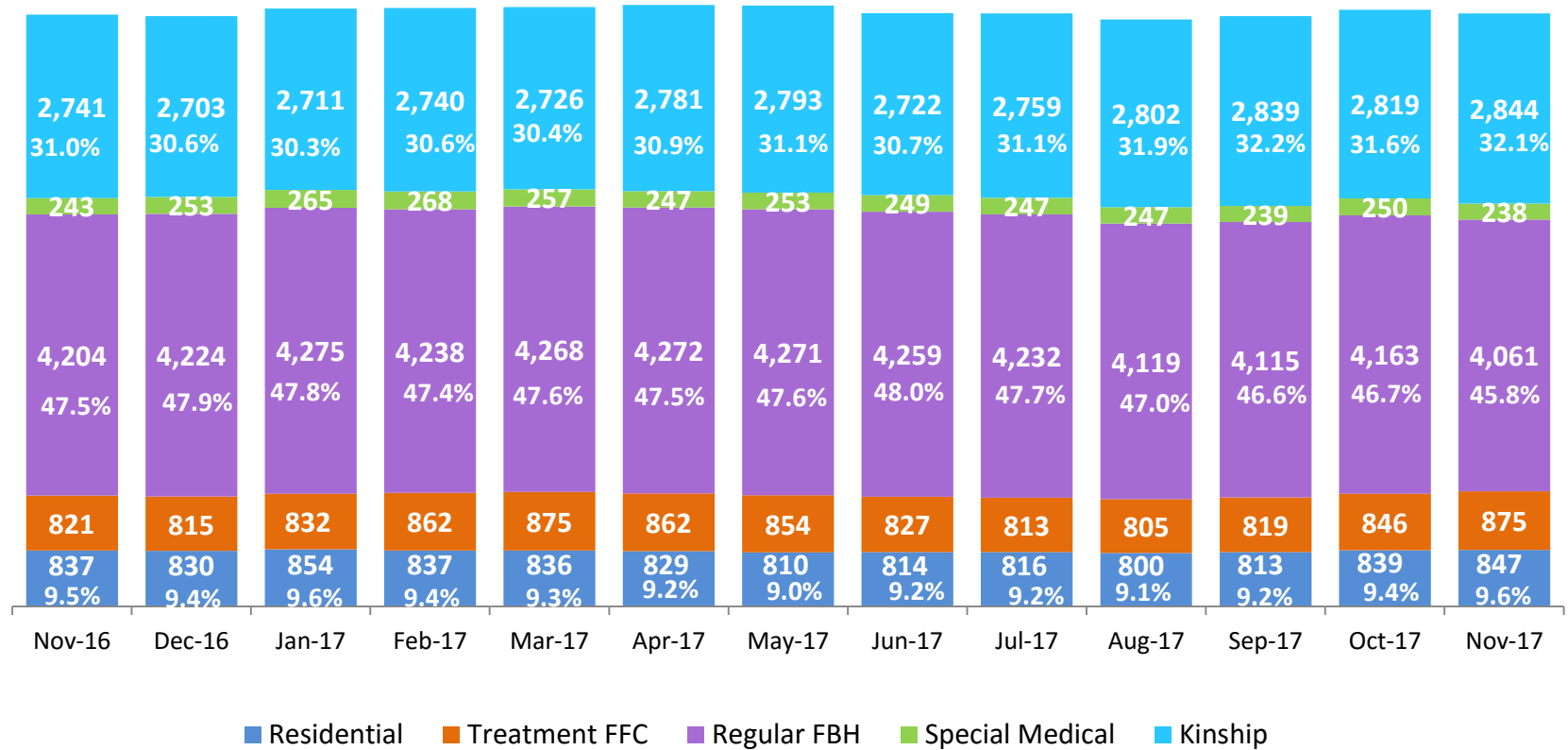


	CY 2013	CY 2014	CY 2015	CY 2016	Jan 2017	Feb 2017	Mar 2017	Apr 2017	May 2017	Jun 2017	Jul 2017	Aug 2017	Sep 2017	Oct 2017	Nov 2017
Number of Placements	4,283	4,160	3,760	3,647	360	274	366	340	351	363	344	364	375	395	311

*Excludes CTH placements.

Children in Foster Care *

November 2016 – November 2017 (end of month)

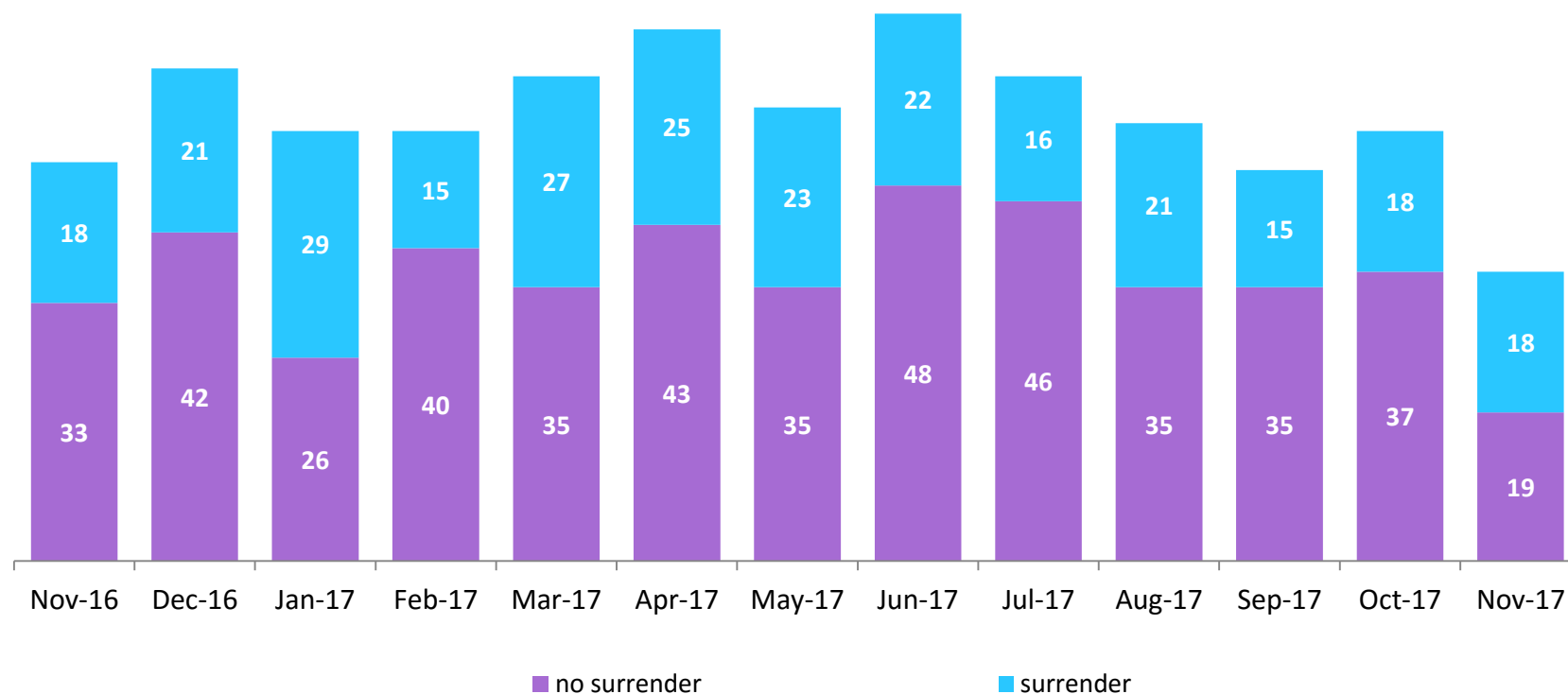


	Nov 2016	Dec 2016	Jan 2017	Feb 2017	Mar 2017	Apr 2017	May 2017	Jun 2017	Jul 2017	Aug 2017	Sep 2017	Oct 2017	Nov 2017
Number in Foster Care	8,846	8,825	8,937	8,945	8,962	8,991	8,981	8,871	8,867	8,773	8,825	8,917	8,865

*Excludes CTH placements and includes children in 24 hour care and approximately 200 young children who are living in foster homes or residential care facilities with their mothers who are in foster care (8D children).

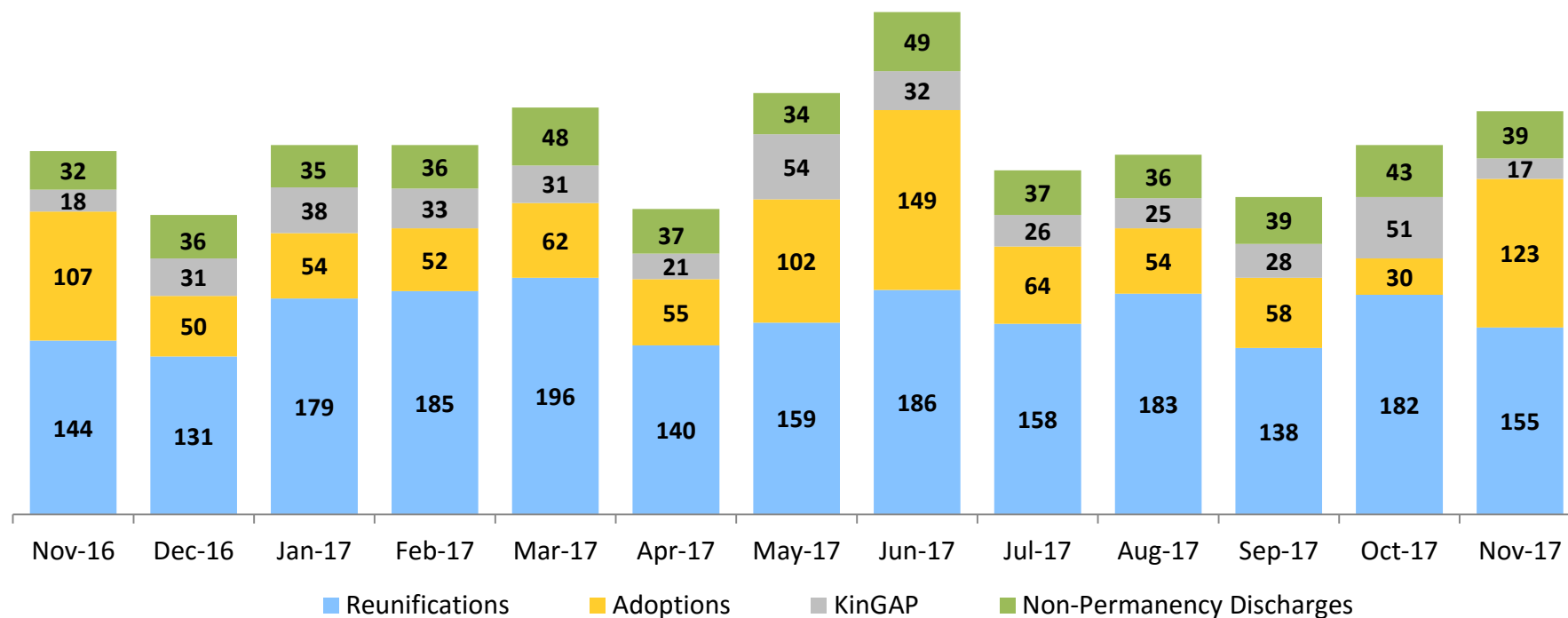
Children Freed for Adoption, Surrender by at Least One Parent

November 2016 – November 2017



	Nov 2016	Dec 2016	Jan 2017	Feb 2017	Mar 2017	Apr 2017	May 2017	Jun 2017	Jul 2017	Aug 2017	Sep 2017	Oct 2017	Nov 2017
Number Freed for Adoption	51	63	55	55	62	68	58	70	62	56	50	55	37

Permanency and Non-Permanency* Discharges from Foster Care**
November 2016 – November 2017

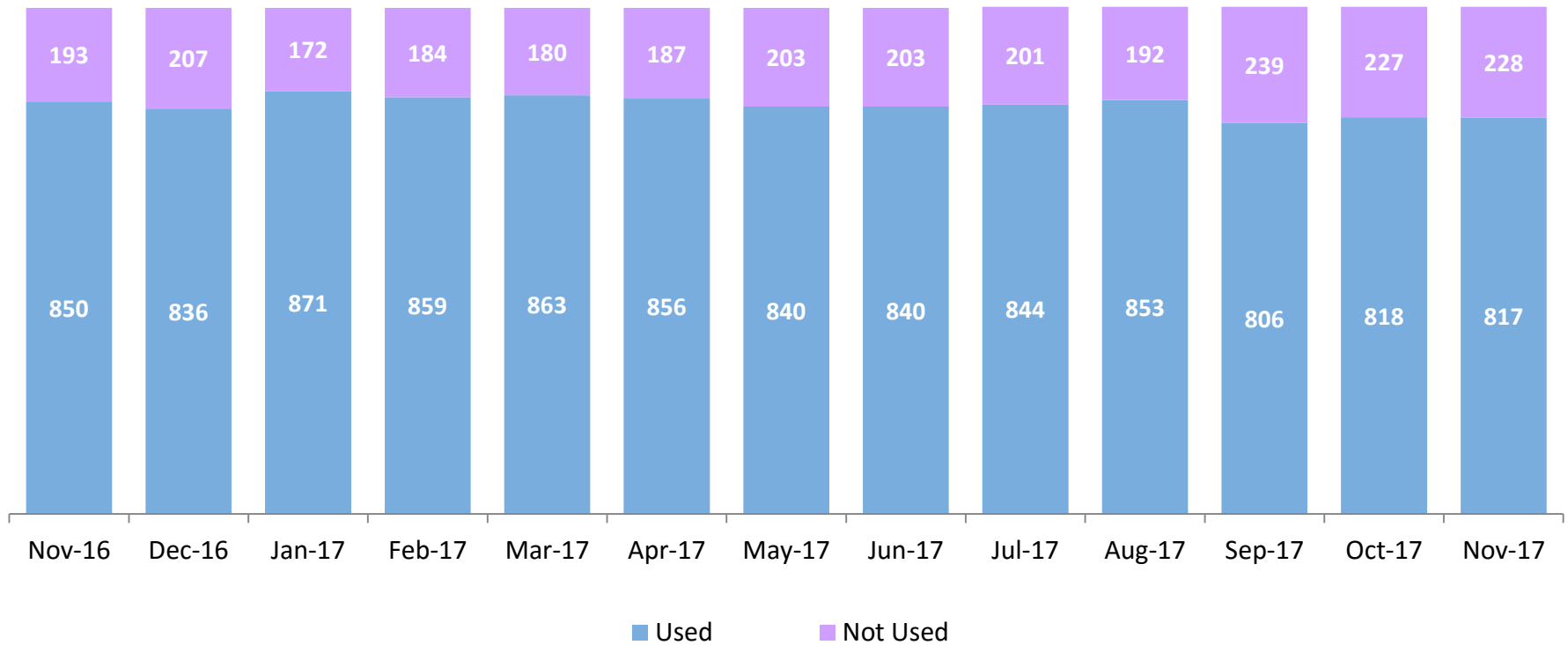


*Non-permanency discharges include AWOL, APPLA , other discharge destinations such as psychiatric institutions and correctional facilities and discharges with unspecified destinations.

**Excludes discharges of youth who entered care in CTH.

Residential Care Capacity and Utilization

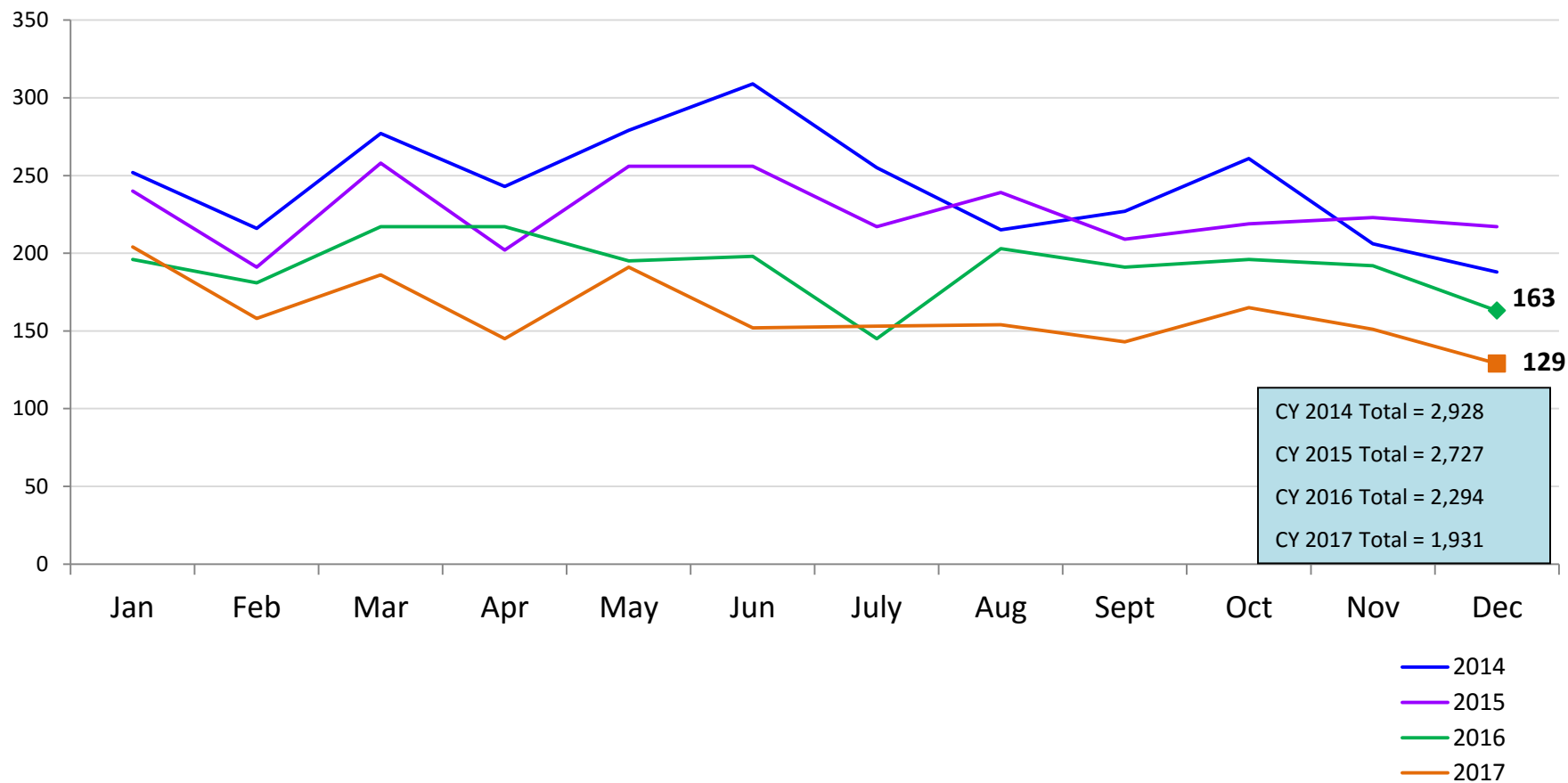
November 2016 – November 2017



	Nov 2016	Dec 2016	Jan 2017	Feb 2017	Mar 2017	Apr 2017	May 2017	Jun 2017	Jul 2017	Aug 2017	Sep 2017	Oct 2017	Nov 2017
Capacity	1,043	1,043	1,043	1,043	1,043	1,043	1,043	1,043	1,045	1,045	1,045	1,045	1,045

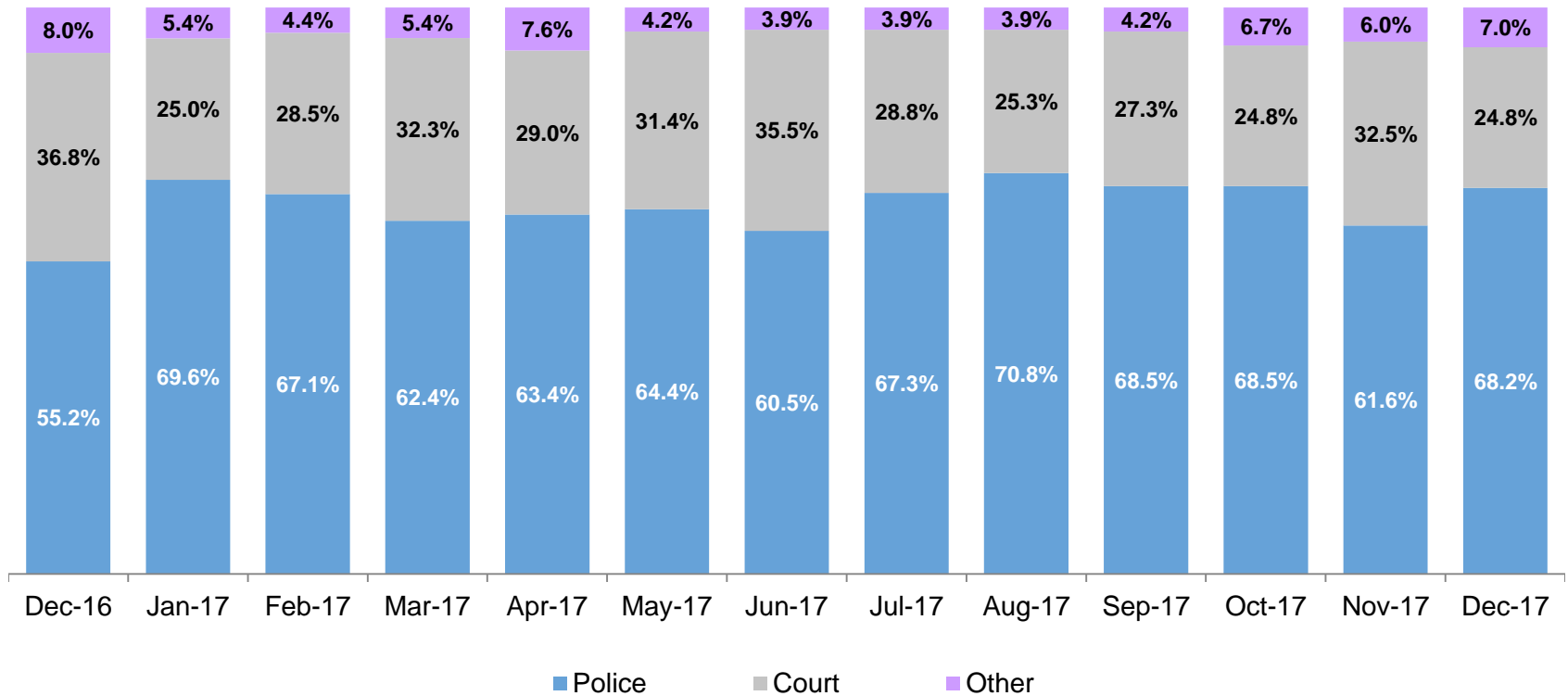
Total Monthly Admissions to Detention

January 2014 – December 2017 (Monthly Total)



Admit Authority, Detention Admissions

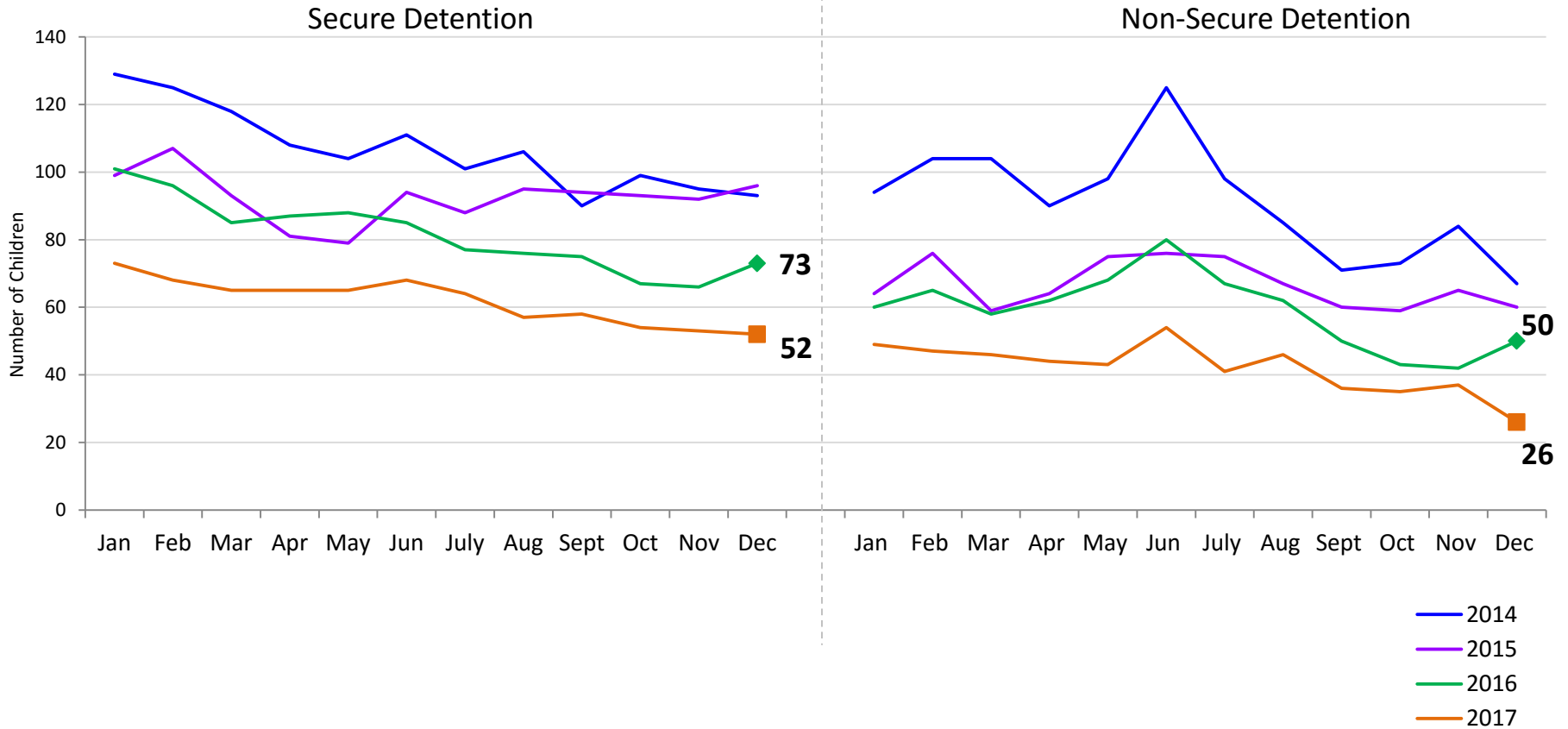
December 2016 – December 2017 (Monthly Total)



	Dec-16	Jan-17	Feb-17	Mar-17	Apr-17	May-17	Jun-17	Jul-17	Aug-17	Sep-17	Oct-17	Nov-17	Dec-17
Number of Admissions	163	204	158	186	145	191	152	153	154	143	165	151	129

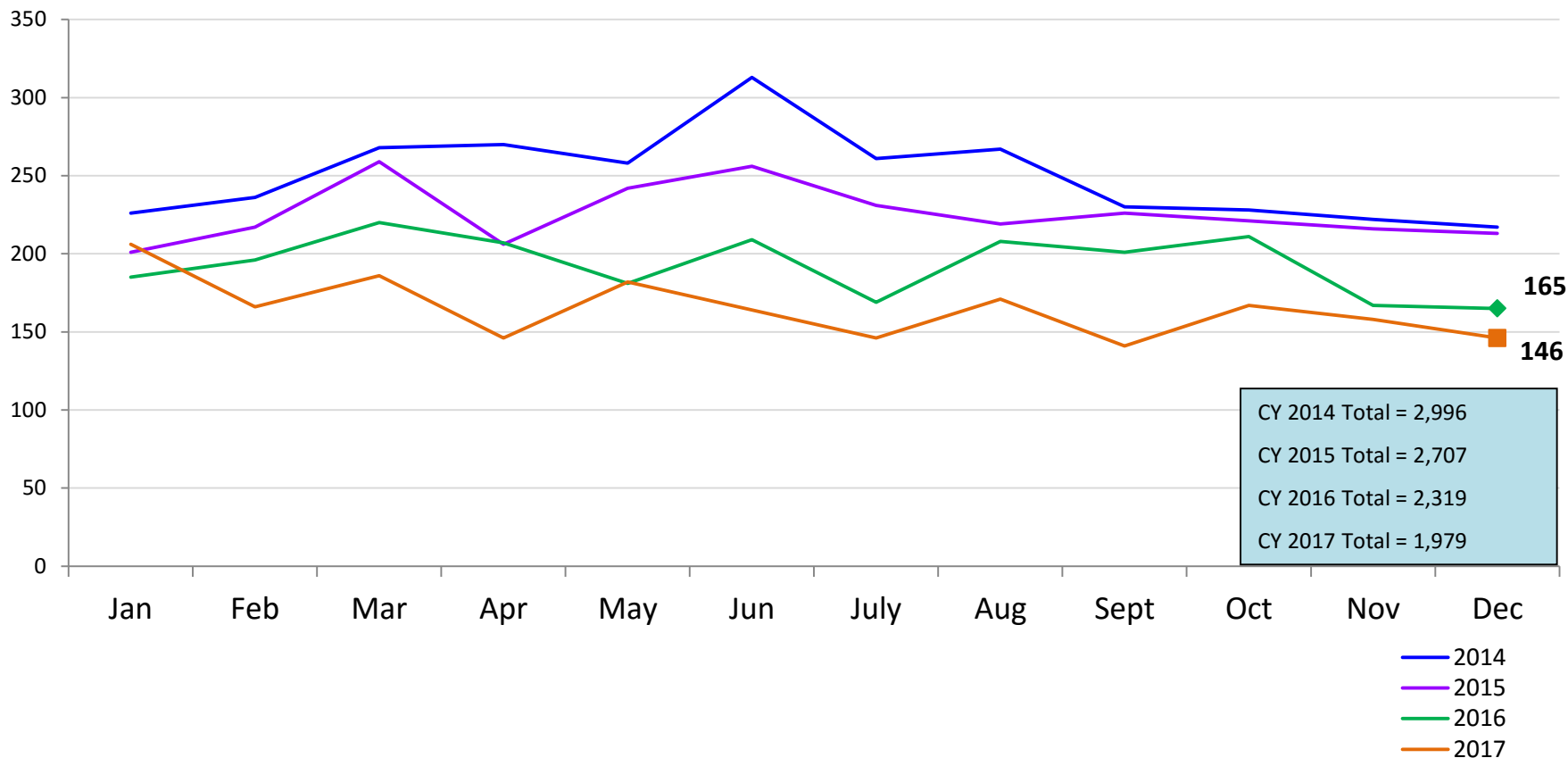
Monthly Average Daily Population

January 2014 – December 2017



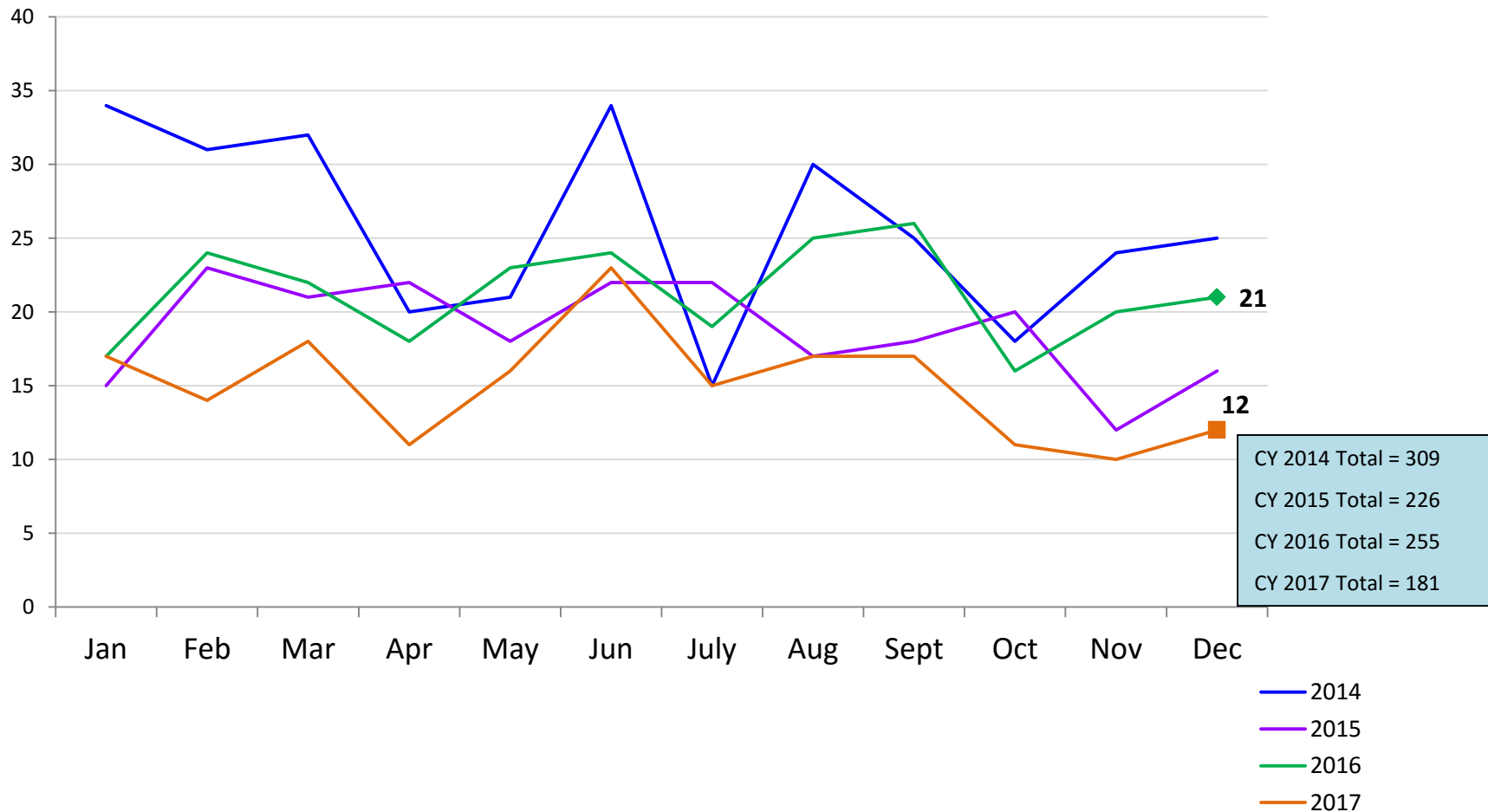
Total Monthly Releases from Detention

January 2014 – December 2017 (Monthly Total)



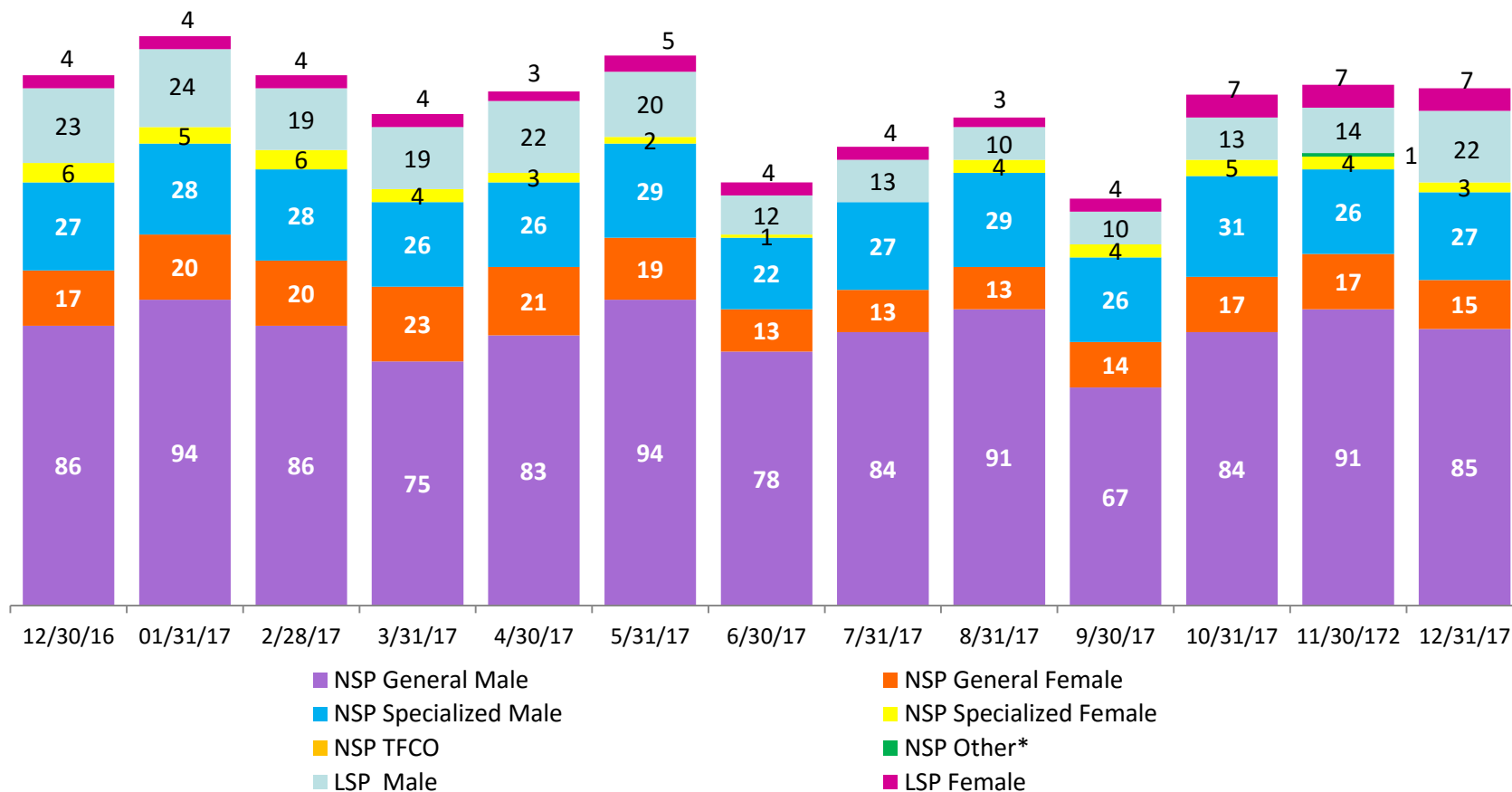
Close to Home Admissions*

January 2014 – December 2017 (Monthly Total)



*Beginning in December 2015 Close to Home admissions include LSP as well as NSP.

December 2016 – December 2017 (end of month)



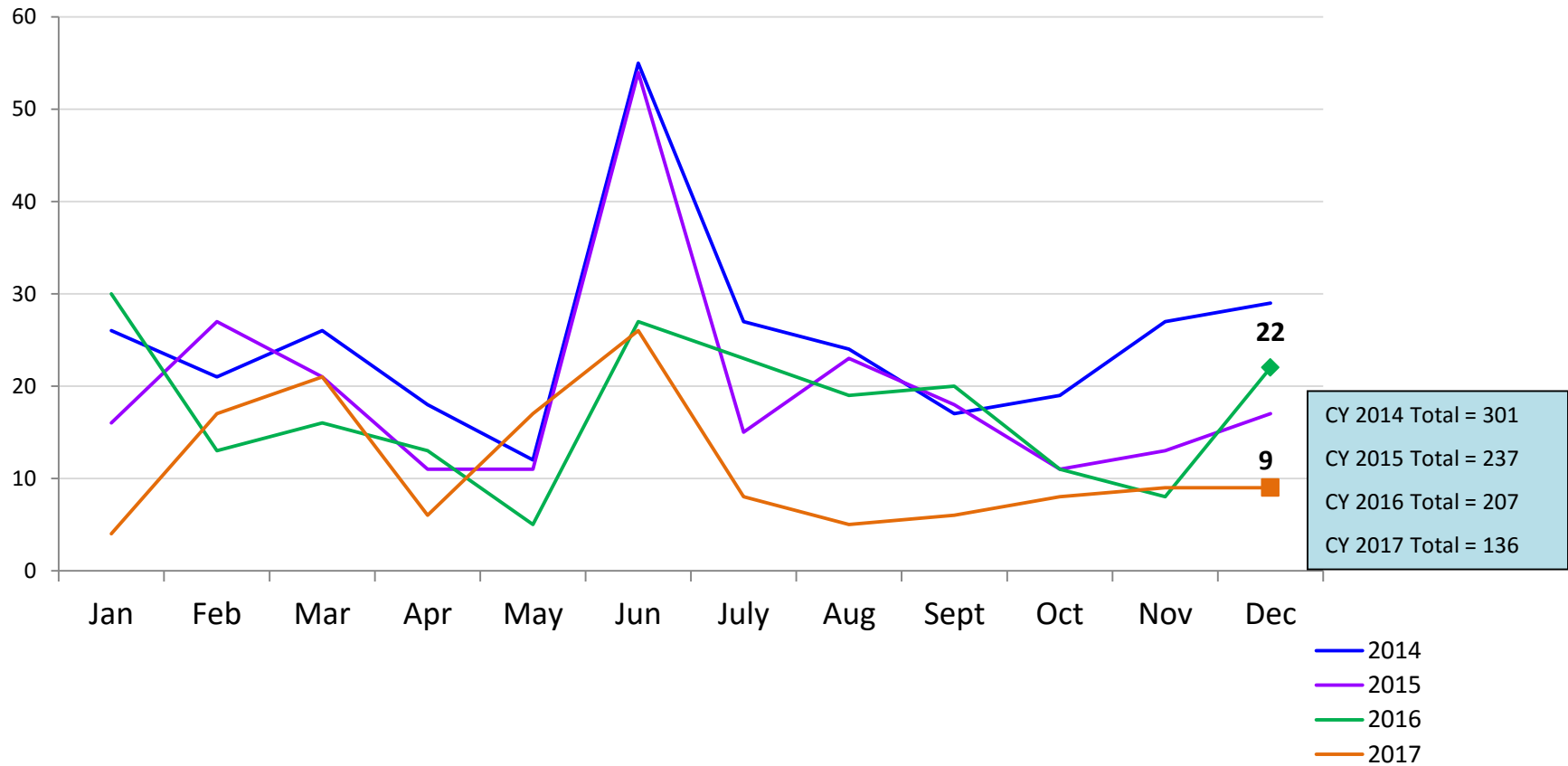
Number in Placement

	12/30/16	1/31/17	2/28/17	3/31/17	4/30/17	5/31/17	6/30/17	7/31/17	8/31/17	9/30/17	10/31/17	11/30/17	12/31/17
NSP	136	147	140	128	133	144	114	124	137	111	137	139	130
LSP	27	28	23	23	25	25	16	17	13	14	20	21	29

*NSP Other includes youth in child welfare and mother/child placements.

Releases from Close to Home Placement to Aftercare

January 2014 – December 2017 (Monthly Total)



Appendix

Figure 1: SCR Intakes by Borough, OCT 16 – DEC 16 and OCT 17 – DEC 17

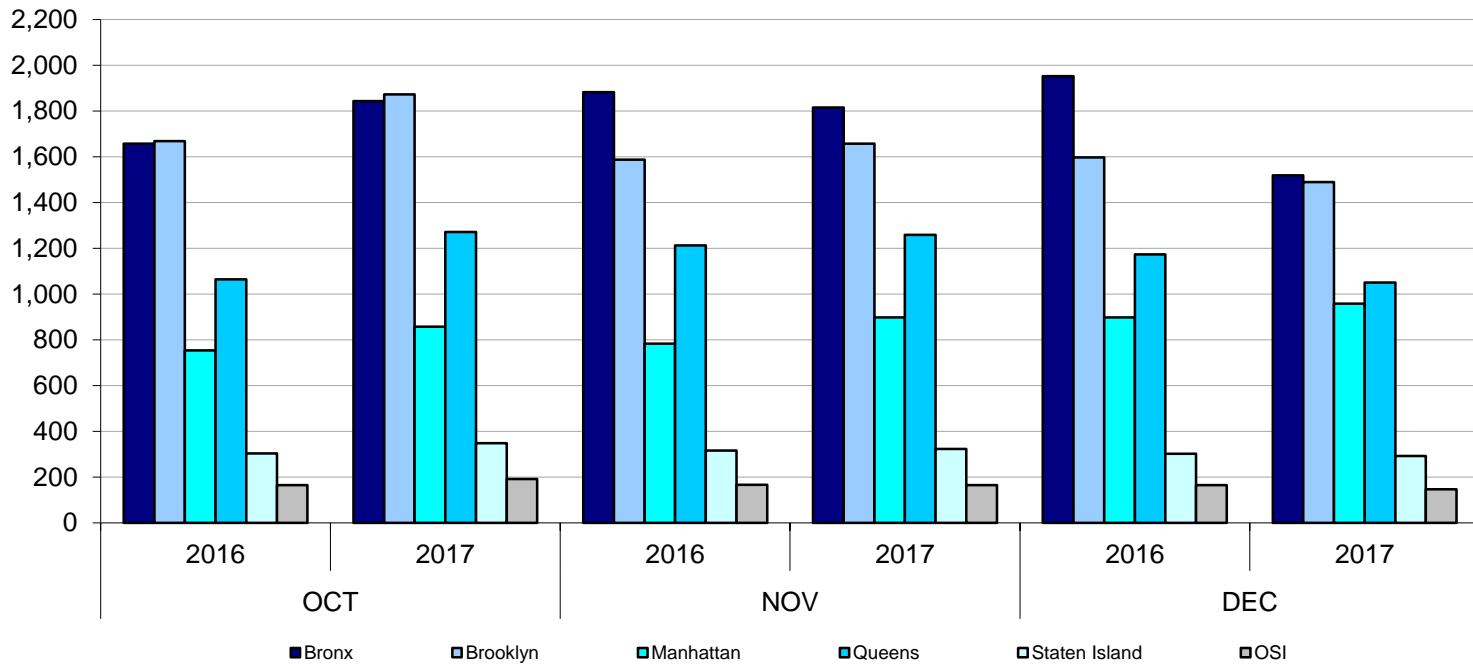


Table 1 - SCR Intake Changes by Borough, OCT 16 – DEC 16 and OCT 17 – DEC 17

Month	Year	Bronx	Brooklyn	Manhattan	Queens	Staten Island	OSI	Other	Total
OCT	2016	1,657	1,668	754	1,065	304	165	206	5,819
	2017	1,844	1,872	857	1,272	348	192	191	6,576
	% Change	11.3%	12.2%	13.7%	19.4%	14.5%	16.4%	-7.3%	13.0%
NOV	2016	1,882	1,587	784	1,213	317	167	172	6,122
	2017	1,816	1,657	898	1,259	323	165	158	6,276
	% Change	-3.5%	4.4%	14.5%	3.8%	1.9%	-1.2%	-8.1%	2.5%
DEC	2016	1,953	1,597	898	1,173	302	165	198	6,286
	2017	1,519	1,490	958	1,050	292	147	152	5,608
	% Change	-22.2%	-6.7%	6.7%	-10.5%	-3.3%	-10.9%	-23.2%	-10.8%
Total	2016	5,492	4,852	2,436	3,451	923	497	576	18,227
	2017	5,179	5,019	2,713	3,581	963	504	501	18,460
	% Change	-5.7%	3.4%	11.4%	3.8%	4.3%	1.4%	-13.0%	1.3%

Figure 2: Citywide SCR Intakes by Reporter Group, OCT 16 – DEC 16 and OCT 17 – DEC 17

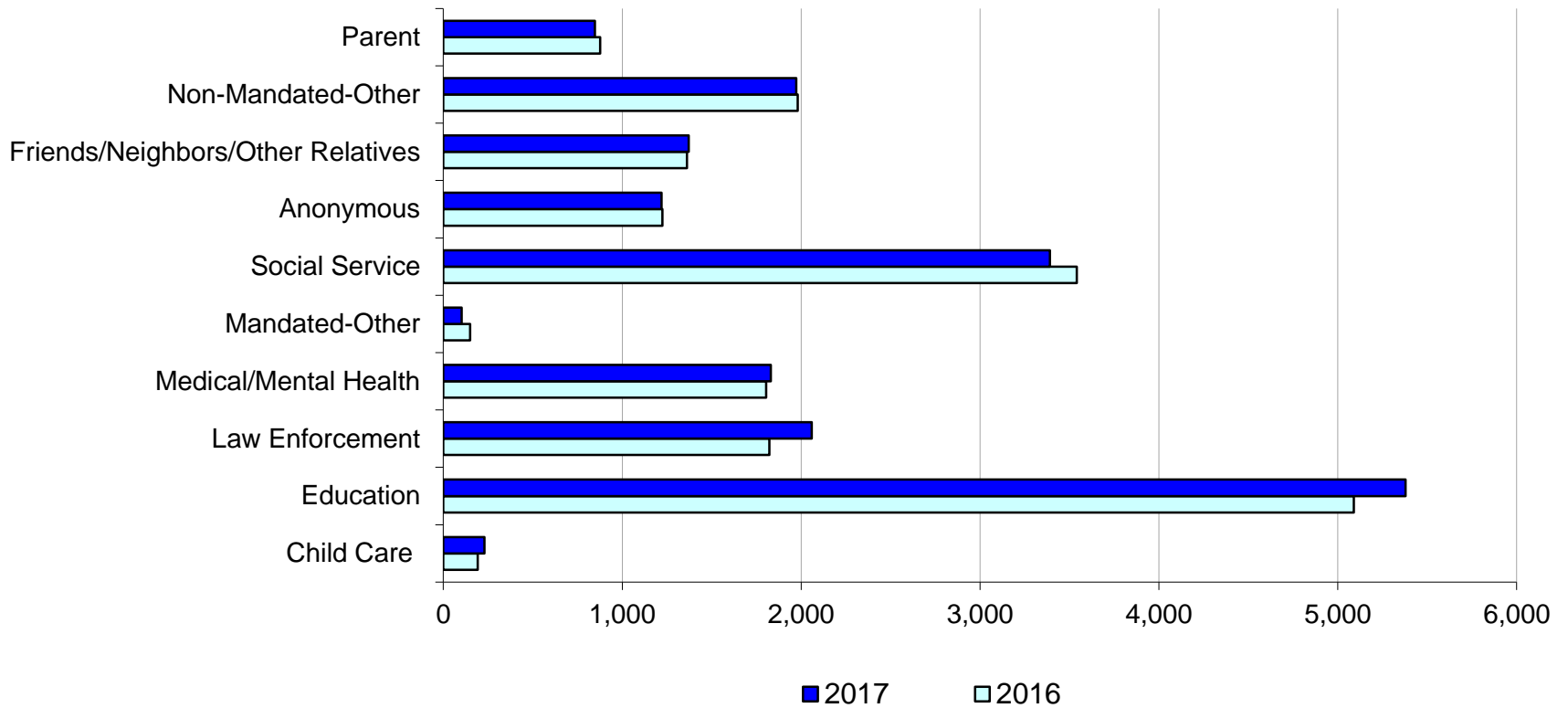
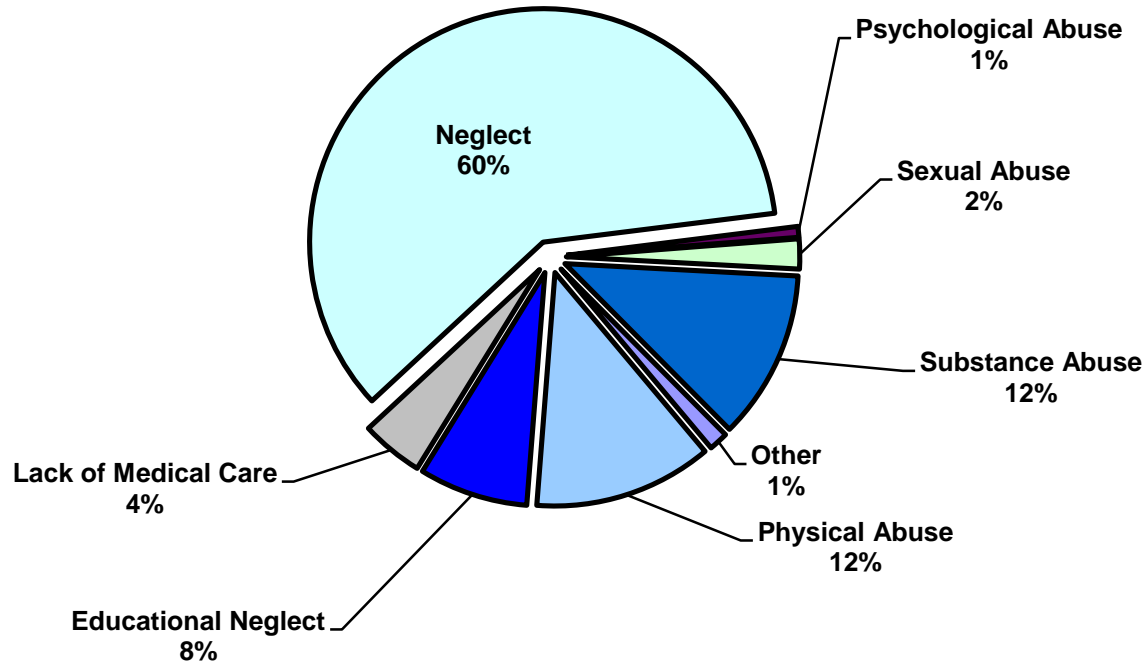


Table 2 - SCR Intakes by Reporter Group, OCT 16 – DEC 16 and OCT 17 – DEC 17

Year	Child Care/ Substitute Care Personnel	Educational Personnel	Law Enforcement	Medical/ Mental Health Personnel	Mandated- Other	Social Service Personnel	Anonymous	Friends/ Neighbors/ Other Relatives	Non- Mandated- Other	Parent	Foster Parent	*Total
Bronx												
2016	72	1,659	497	541	30	1,092	353	404	605	233	1	5,492
2017	55	1,617	482	523	23	983	347	393	552	203	1	5,179
% Change	-23.6%	-2.5%	-3.0%	-3.3%	-23.3%	-10.0%	-1.7%	-2.7%	-8.8%	-12.9%	--	-5.7%
Brooklyn												
2016	42	1,364	587	457	44	878	335	382	530	229	2	4,852
2017	65	1,457	667	445	27	905	345	370	510	227	1	5,019
% Change	54.8%	6.8%	13.6%	-2.6%	-38.6%	3.1%	3.0%	-3.1%	-3.8%	-0.9%	-50.0%	3.4%
Manhattan												
2016	22	551	259	287	31	517	191	192	284	99	0	2,436
2017	33	622	348	313	16	486	204	249	331	111	0	2,713
% Change	50.0%	12.9%	34.4%	9.1%	-48.4%	-6.0%	6.8%	29.7%	16.5%	12.1%	--	11.4%
Queens												
2016	21	1,127	295	317	27	683	210	249	364	155	1	3,451
2017	36	1,225	358	361	18	650	209	239	339	145	1	3,581
% Change	71.4%	8.7%	21.4%	13.9%	-33.3%	-4.8%	-0.5%	-4.0%	-6.9%	-6.5%	0.0%	3.8%
Staten Island												
2016	10	293	84	95	6	159	79	82	76	39	0	923
2017	14	347	76	91	4	160	67	74	89	41	0	963
% Change	40.0%	18.4%	-9.5%	-4.2%	-33.3%	0.6%	-15.2%	-9.8%	17.1%	5.1%	--	4.3%
OSI												
2016	21	48	29	46	7	90	40	30	91	94	0	497
2017	24	59	28	42	13	95	31	26	116	68	2	504
% Change	14.3%	22.9%	-3.4%	-8.7%	85.7%	5.6%	-22.5%	-13.3%	27.5%	-27.7%	0.0%	1.4%
Other												
2016	4	47	72	62	4	121	17	23	30	27	1	576
2017	3	52	100	56	1	111	16	20	36	52	1	501
% Change	-25.0%	10.6%	38.9%	-9.7%	-75.0%	-8.3%	-5.9%	-13.0%	20.0%	92.6%	0.0%	-13.0%
Citywide												
2016	192	5,089	1,823	1,805	149	3,540	1,225	1,362	1,980	876	5	18,227
2017	230	5,379	2,059	1,831	102	3,390	1,219	1,371	1,973	847	6	18,460
% Change	19.8%	5.7%	12.9%	1.4%	-31.5%	-4.2%	-0.5%	0.7%	-0.4%	-3.3%	20.0%	1.3%

*There is a small number of intakes with unknown reporter that is included in the totals.

Figure 3: SCR Allegations, OCT 17 – DEC 17



Total Allegations = 44,207

Allegations are grouped as follows: Physical Abuse - burn, fatality, fracture, choking, twisting, shaking, excessive corporal punishment, internal injuries, lacerations, bruises, welts, poisoning, noxious substances; Educational Neglect – educational neglect; Lack of Medical Care – lack of medical care; Neglect - inadequate guardianship, inadequate food, clothing, shelter, lack of supervision, malnutrition, failure to thrive, swelling, dislocations, sprains; Psychological Abuse - isolation, emotional neglect; Sexual Abuse – sexual abuse; Substance Abuse - parental drug use, child drug use; and Other - abandonment, inappropriate custodial conduct.

Table 3 - SCR Allegations, OCT 16 – DEC 16 and OCT 17 – DEC 17

Year	Physical Abuse	Educational Neglect	Lack of Medical Care	Neglect	Psychological Abuse	Sexual Abuse	Substance Abuse	Other	Total
Bronx									
2016	1,559	1,474	705	8,564	115	257	1,815	127	14,616
2017	1,372	1,269	623	7,615	78	238	1,535	97	12,827
% Change	-12.0%	-13.9%	-11.6%	-11.1%	-32.2%	-7.4%	-15.4%	-23.6%	-12.2%
Brooklyn									
2016	1,495	1,083	510	7,248	64	248	1,532	135	12,315
2017	1,528	853	480	7,456	82	272	1,422	123	12,216
% Change	2.2%	-21.2%	-5.9%	2.9%	28.1%	9.7%	-7.2%	-8.9%	-0.8%
Manhattan									
2016	595	404	244	3263	48	117	675	62	5,408
2017	653	418	223	3217	36	83	724	30	5,384
% Change	9.7%	3.5%	-8.6%	-1.4%	-25.0%	-29.1%	7.3%	-51.6%	-0.4%
Queens									
2016	1,062	549	350	4,804	83	149	908	227	8,132
2017	1,220	509	331	4,935	87	164	927	187	8,360
% Change	14.9%	-7.3%	-5.4%	2.7%	4.8%	10.1%	2.1%	-17.6%	2.8%
Staten Island									
2016	304	184	88	1,645	13	33	480	40	2,787
2017	288	195	130	1,467	18	36	295	69	2,498
% Change	-5.3%	6.0%	47.7%	-10.8%	38.5%	9.1%	-38.5%	72.5%	-10.4%
OSI									
2016	341	62	71	1,303	9	81	169	11	2,047
2017	291	41	59	1,216	13	88	149	4	1,861
% Change	-14.7%	-33.9%	-16.9%	-6.7%	44.4%	8.6%	-11.8%	-63.6%	-9.1%
Other									
2016	107	46	40	580	5	23	112	71	984
2017	109	52	60	582	17	35	127	79	1,061
% Change	1.9%	13.0%	50.0%	0.3%	240.0%	52.2%	13.4%	11.3%	7.8%
Citywide									
2016	5,463	3,802	2,008	27,407	337	908	5,691	673	46,289
2017	5,461	3,337	1,906	26,488	331	916	5,179	589	44,207
% Change	0.0%	-12.2%	-5.1%	-3.4%	-1.8%	0.9%	-9.0%	-12.5%	-4.5%

**TABLE 4 - Child Welfare Preventive Cases
New and Closed
January 2014 to December 2017**

Month	New Cases	Closed Cases
2014		
Jan-14	841	686
Feb-14	885	726
Mar-14	998	930
Apr-14	919	941
May-14	919	982
Jun-14	890	826
Jul-14	973	1,168
Aug-14	826	1,102
Sep-14	841	771
Oct-14	835	917
Nov-14	677	788
Dec-14	1,062	821
2015		
Jan-15	728	792
Feb-15	902	751
Mar-15	1,122	831
Apr-15	977	932
May-15	914	999
Jun-15	1,068	930
Jul-15	899	1,217
Aug-15	893	1,064
Sep-15	764	964
Oct-15	749	889
Nov-15	746	807
Dec-15	1,013	881
2016		
Jan-16	792	770
Feb-16	897	795
Mar-16	1,029	978
Apr-16	836	892
May-16	890	966
Jun-16	996	935
Jul-16	842	1,069
Aug-16	897	1,006
Sep-16	821	850
Oct-16	776	627
Nov-16	728	490
Dec-16	816	462
2017		
Jan-17	548	449
Feb-17	602	920
Mar-17	864	1,032
Apr-17	645	780
May-17	790	925
Jun-17	908	944
Jul-17	765	852
Aug-17	875	864
Sep-17	841	747
Oct-17	870	762
Nov-17	779	737
Dec-17	796	729

**Table 5 - Referrals to Child Welfare Preventive Services by Source
January 2014 to December 2017**

Month	Total Referrals	Division of Child Protection	Foster Care Agencies	PPRS Transfer	School	Self	Other Sources*
2014							
Jan-14	1,537	70.0%	1.2%	6.6%	2.3%	5.8%	14.2%
Feb-14	1,334	69.7%	0.8%	8.4%	1.7%	5.5%	13.9%
Mar-14	1,612	70.0%	1.4%	8.6%	1.6%	5.3%	13.1%
Apr-14	1,525	70.2%	0.9%	7.6%	2.1%	3.7%	15.4%
May-14	1,580	74.4%	0.7%	8.3%	1.4%	5.2%	10.0%
Jun-14	1,550	78.6%	1.2%	6.3%	1.2%	3.2%	9.4%
Jul-14	1,659	79.6%	1.5%	6.7%	0.4%	4.2%	7.6%
Aug-14	1,395	72.2%	1.6%	10.8%	0.3%	4.9%	10.3%
Sep-14	1,597	49.4%	1.5%	7.6%	0.3%	4.5%	36.8%
Oct-14	1,634	68.2%	1.9%	10.0%	1.2%	4.6%	14.1%
Nov-14	1,311	66.4%	0.9%	14.3%	2.4%	3.9%	12.1%
Dec-14	1,785	71.1%	1.4%	8.8%	2.9%	4.8%	11.0%
CY 2014	18,519	70.1%	1.3%	8.6%	1.5%	4.6%	14.0%
2015							
Jan-15	1,430	74.4%	1.6%	8.7%	1.8%	3.8%	9.7%
Feb-15	1,538	76.5%	0.8%	8.1%	1.8%	4.7%	8.2%
Mar-15	1,798	74.6%	0.9%	7.3%	1.6%	4.8%	10.8%
Apr-15	1,719	78.2%	1.3%	7.2%	0.6%	3.5%	9.1%
May-15	1,561	77.2%	1.0%	5.1%	1.5%	4.5%	10.8%
Jun-15	1,716	77.4%	1.1%	7.7%	1.2%	3.5%	9.1%
Jul-15	1,511	79.6%	0.9%	7.2%	0.3%	3.8%	8.2%
Aug-15	1,418	79.3%	2.2%	7.8%	0.2%	3.1%	7.5%
Sep-15	1,209	72.1%	2.8%	10.4%	0.5%	5.5%	8.6%
Oct-15	1,338	70.4%	1.9%	8.3%	2.1%	5.8%	11.6%
Nov-15	1,220	68.2%	1.8%	9.6%	1.4%	6.2%	12.8%
Dec-15	1,526	73.5%	1.6%	8.0%	2.0%	5.0%	9.9%
2016							
Jan-16	1,370	73.6%	1.6%	8.2%	0.7%	5.4%	10.6%
Feb-16	1,436	75.8%	2.2%	7.8%	1.0%	3.8%	9.3%
Mar-16	1,557	72.0%	2.1%	8.8%	1.0%	4.6%	11.4%
Apr-16	1,378	76.1%	1.5%	7.4%	1.5%	3.5%	10.0%
May-16	1,386	73.4%	1.4%	8.7%	1.0%	4.7%	10.8%
Jun-16	1,564	77.2%	2.4%	6.2%	1.5%	4.1%	8.6%
Jul-16	1,338	80.3%	1.7%	6.4%	1.0%	4.2%	6.4%
Aug-16	1,385	79.1%	1.8%	7.1%	0.4%	4.0%	7.6%
Sep-16	1,297	77.8%	2.1%	7.5%	0.8%	4.5%	7.4%
Oct-16	1,247	70.1%	2.0%	7.6%	1.5%	5.9%	12.9%
Nov-16	1,229	67.8%	2.0%	7.8%	1.2%	5.5%	15.8%
Dec-16	1,175	76.0%	1.5%	7.1%	1.3%	3.8%	10.3%
2017							
Jan-17	1,046	78.5%	1.4%	6.7%	0.7%	3.1%	9.7%
Feb-17	1,067	77.7%	0.8%	6.7%	0.8%	3.8%	10.1%
Mar-17	1,383	79.1%	0.6%	6.9%	0.9%	4.0%	8.5%
Apr-17	1,116	81.2%	1.0%	5.9%	1.1%	1.4%	9.4%
May-17	1,335	81.9%	0.9%	5.5%	1.3%	2.8%	7.6%
Jun-17	1,449	82.3%	0.8%	5.9%	1.2%	2.9%	6.9%
Jul-17	1,273	83.3%	0.9%	7.9%	0.7%	1.9%	5.3%
Aug-17	1,429	82.7%	0.6%	9.3%	0.3%	1.7%	5.2%
Sep-17	1,383	79.6%	1.6%	7.7%	0.8%	2.8%	7.4%
Oct-17	1,489	77.5%	1.5%	7.5%	1.0%	3.1%	9.4%
Nov-17	1,238	75.0%	1.5%	8.8%	2.2%	3.6%	8.9%
Dec-17	1,213	73.3%	1.4%	10.9%	1.5%	3.1%	9.9%

*Other Community Sources includes the Department of Homeless Services, Family Court, FAP, Hospitals and Medical facilities, the NYC Housing Authority, Probation, and Sponsor Agencies.