

# FLASH

monthly indicator

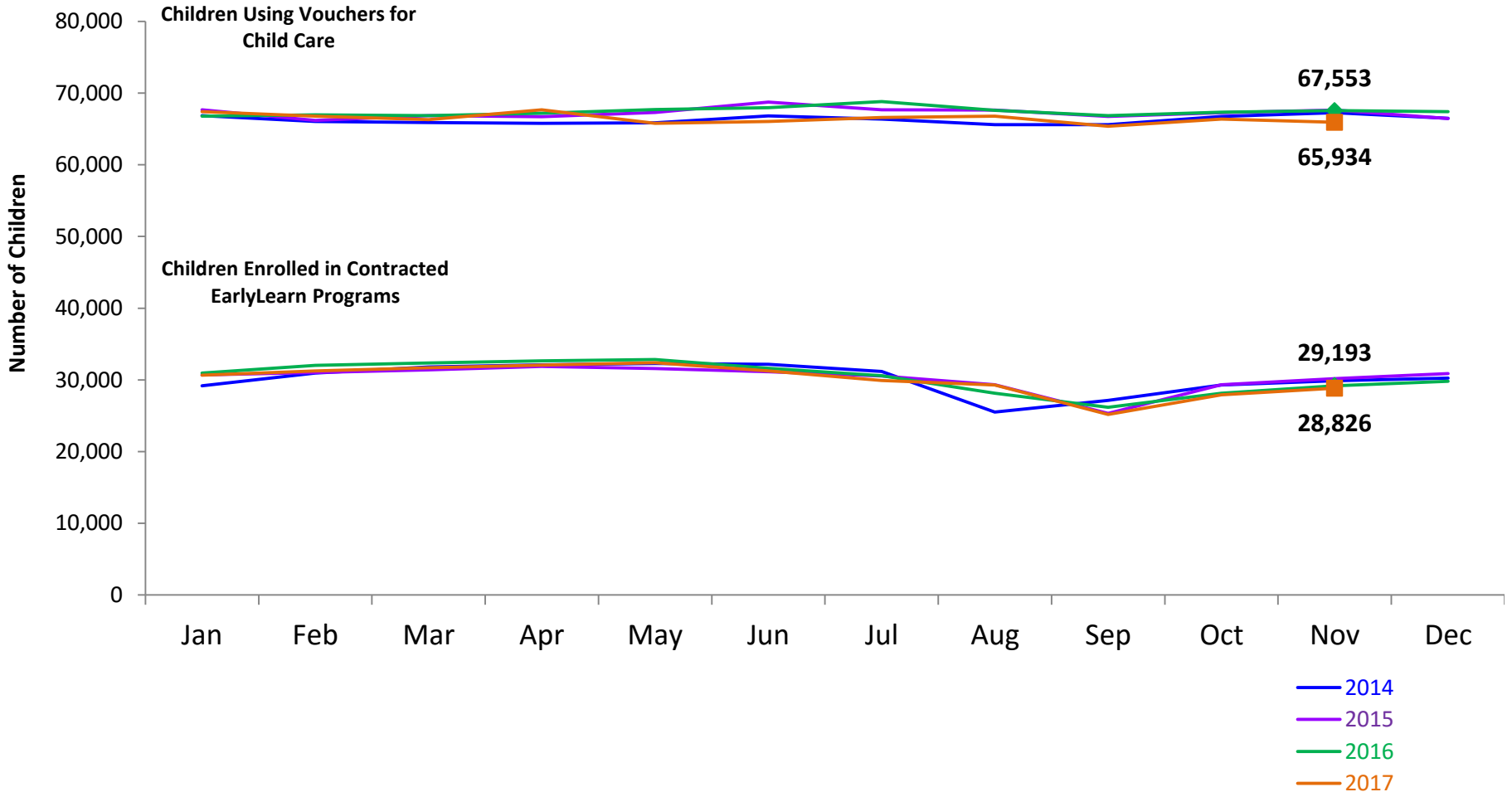
# REPORT

---

December 2017

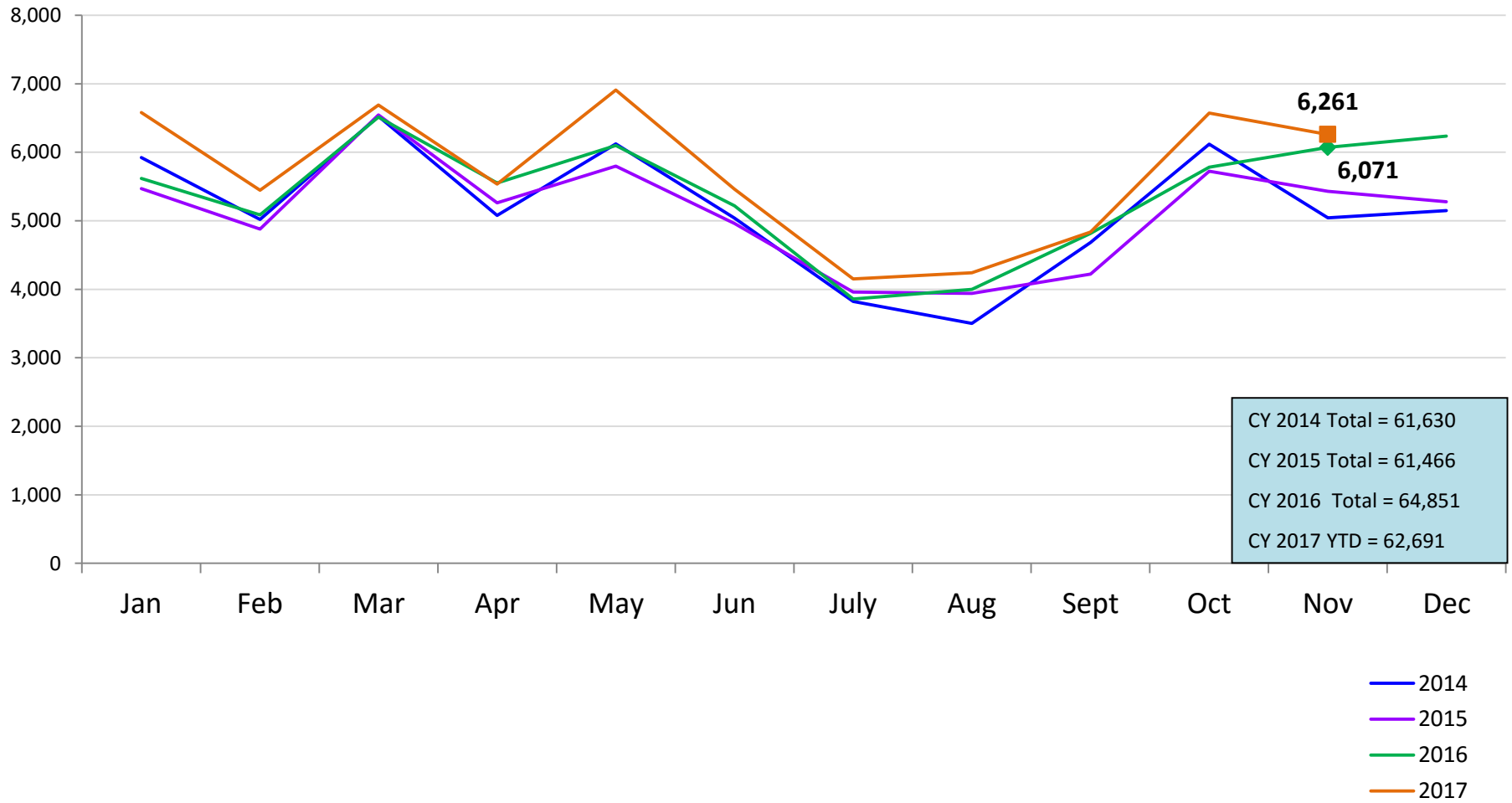
## Children Enrolled in Contracted EarlyLearn Programs and Children Using Vouchers for Child Care

January 2014 – November 2017(End of Month)



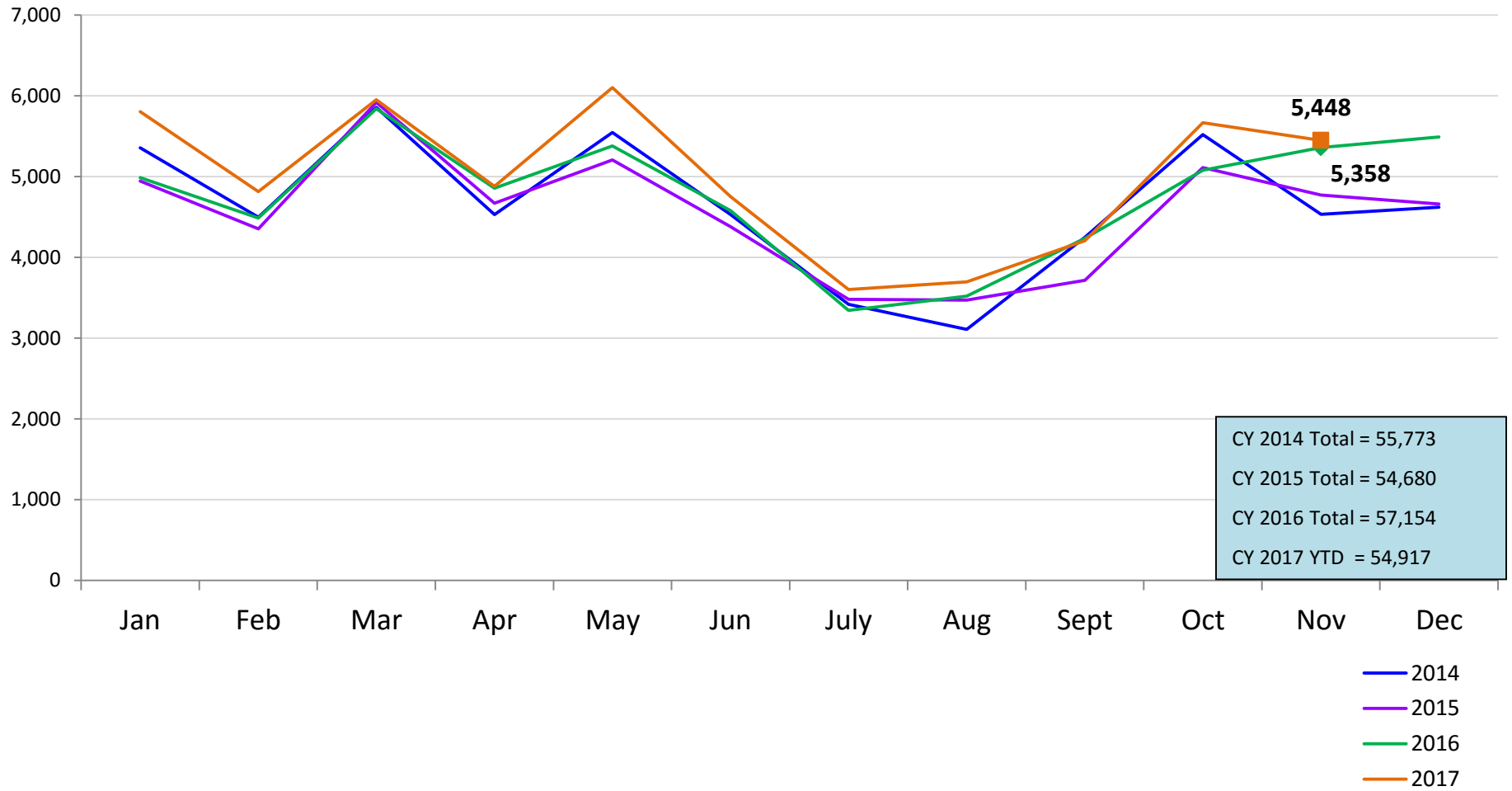
### SCR Intakes

January 2014 – November 2017 (Monthly Total)



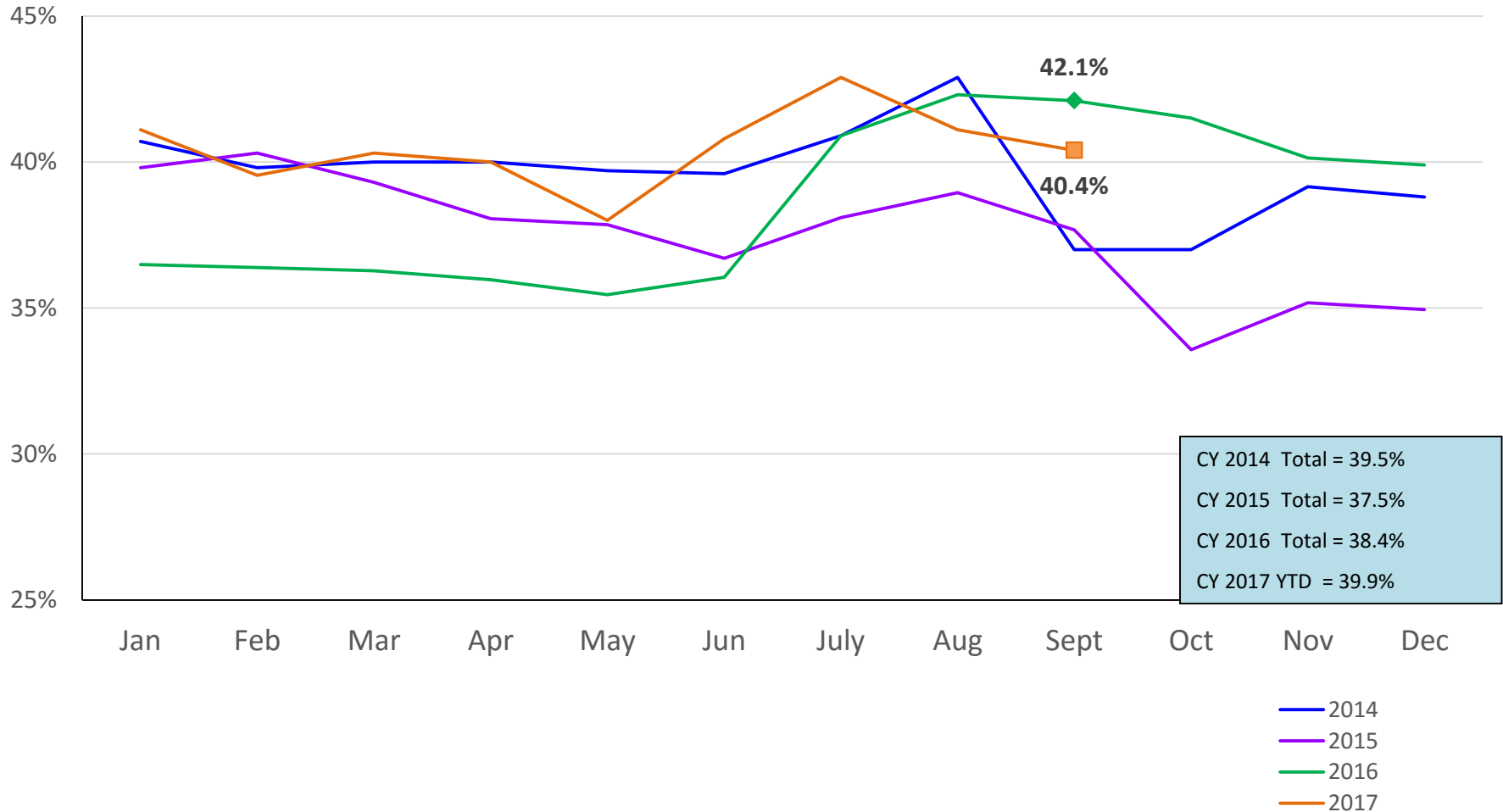
### SCR Consolidated Investigations

January 2014 – November 2017 (Monthly Total)



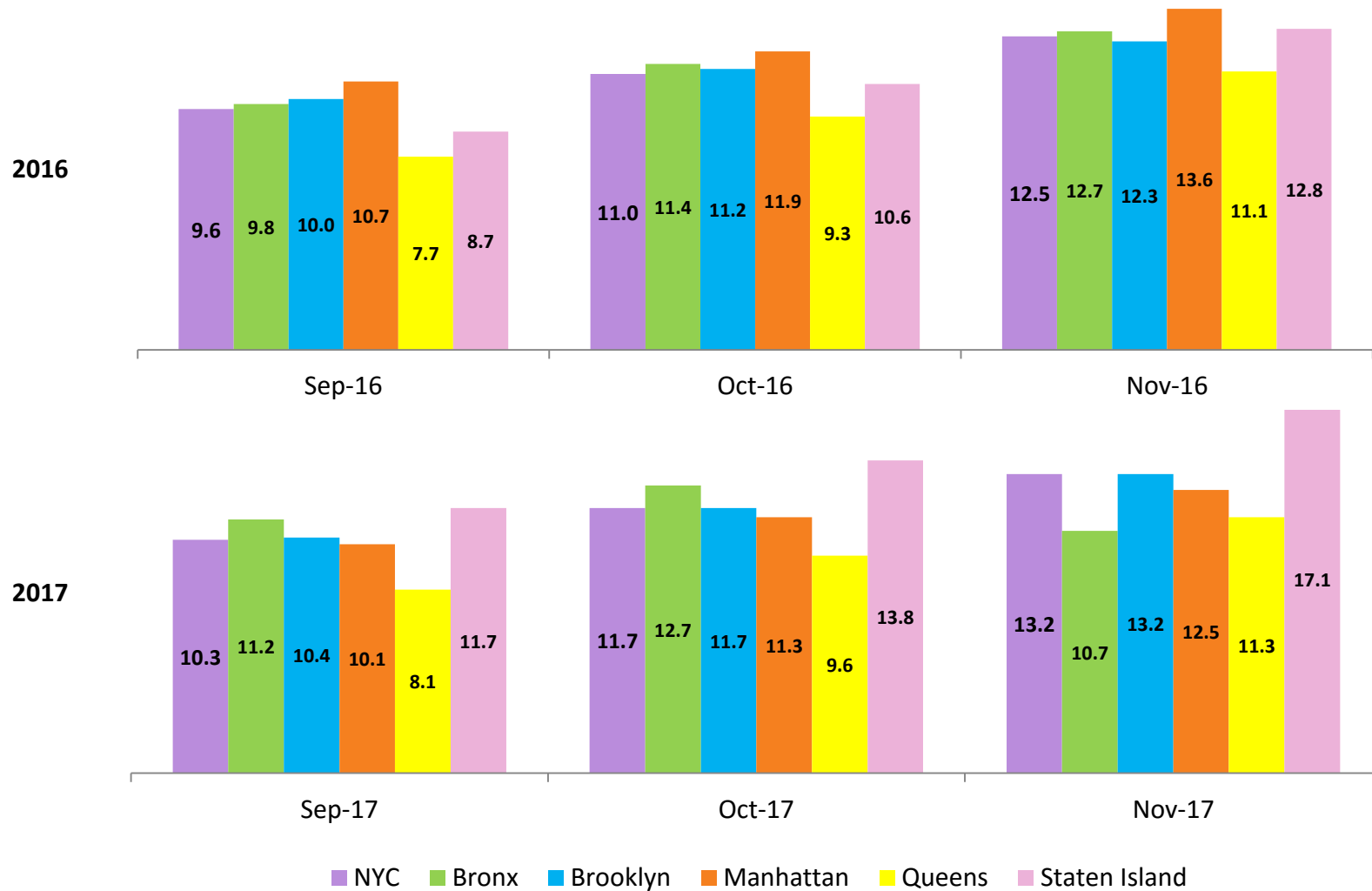
### SCR Investigation Indication Rate

January 2014 – September 2017



### Average P/D Combined Caseload\*

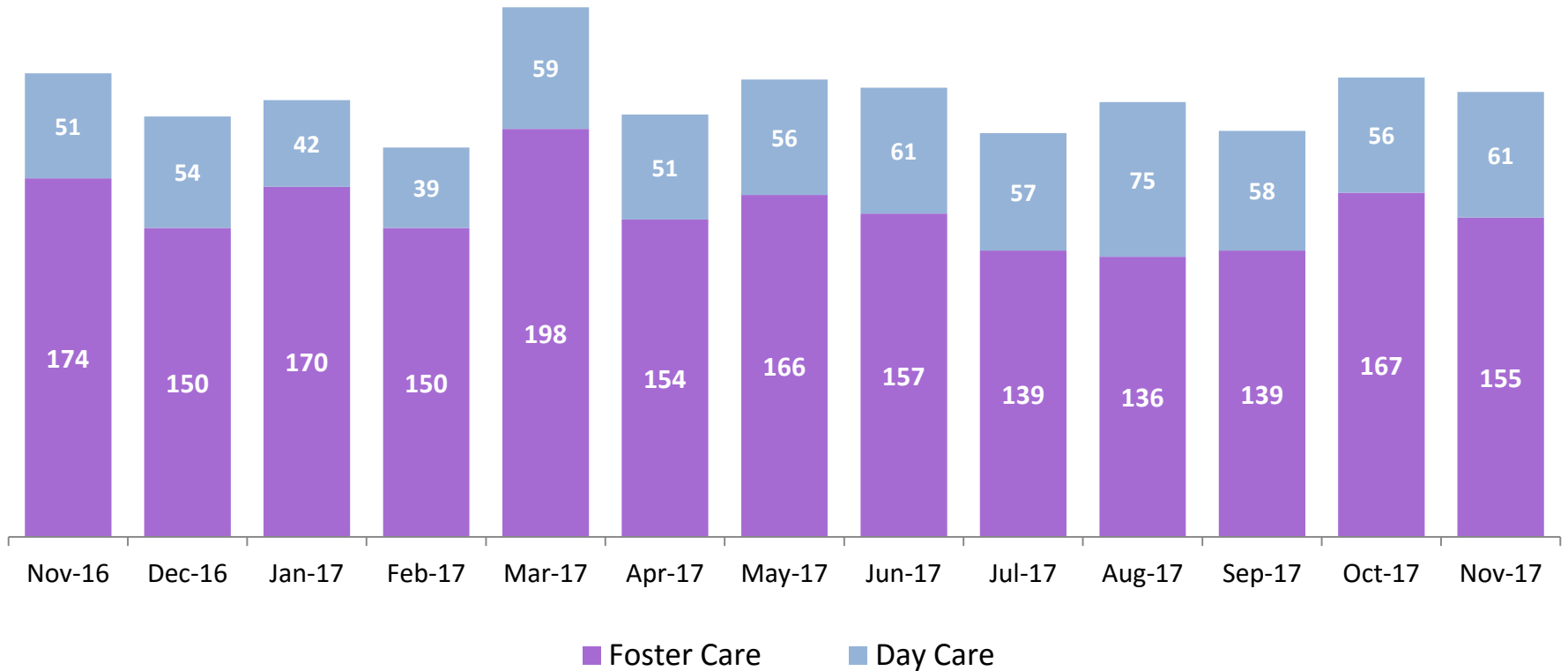
September – November 2016 & September – November 2017



\* Caseloads are of protective/diagnostic caseworkers only and exclude the caseloads carried by Level I and Level II Supervisors.

### OSI Foster Care and Day Care Investigations

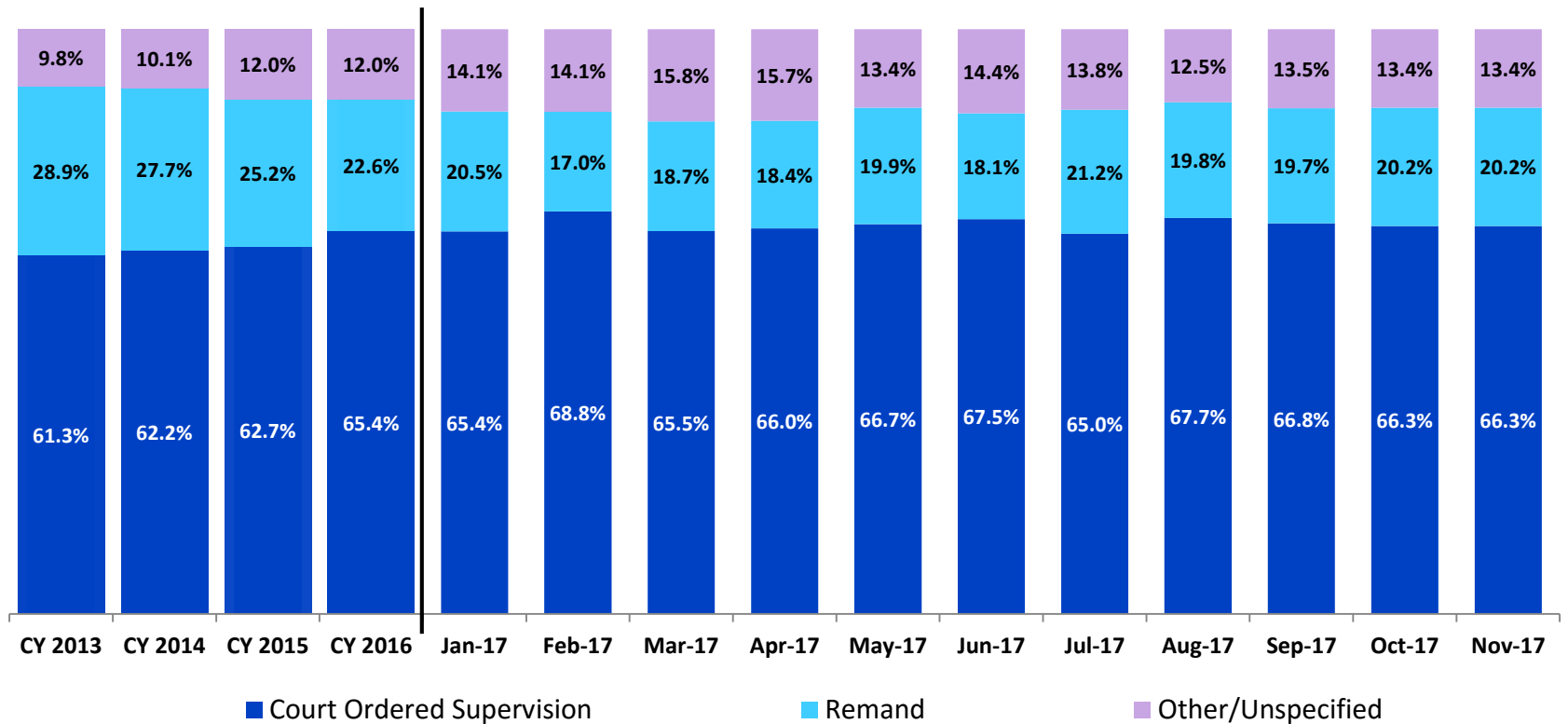
November 2016 – November 2017



	Nov 2016	Dec 2016	Jan 2017	Feb 2017	Mar 2017	Apr 2017	May 2017	Jun 2017	Jul 2017	Aug 2017	Sep 2017	Oct 2017	Nov 2017
Number of Investigations	225	204	212	189	257	205	222	218	196	211	197	223	216

### Article 10 Filings and Initial Hearing Outcomes, Children

CY 2013 – November 2017



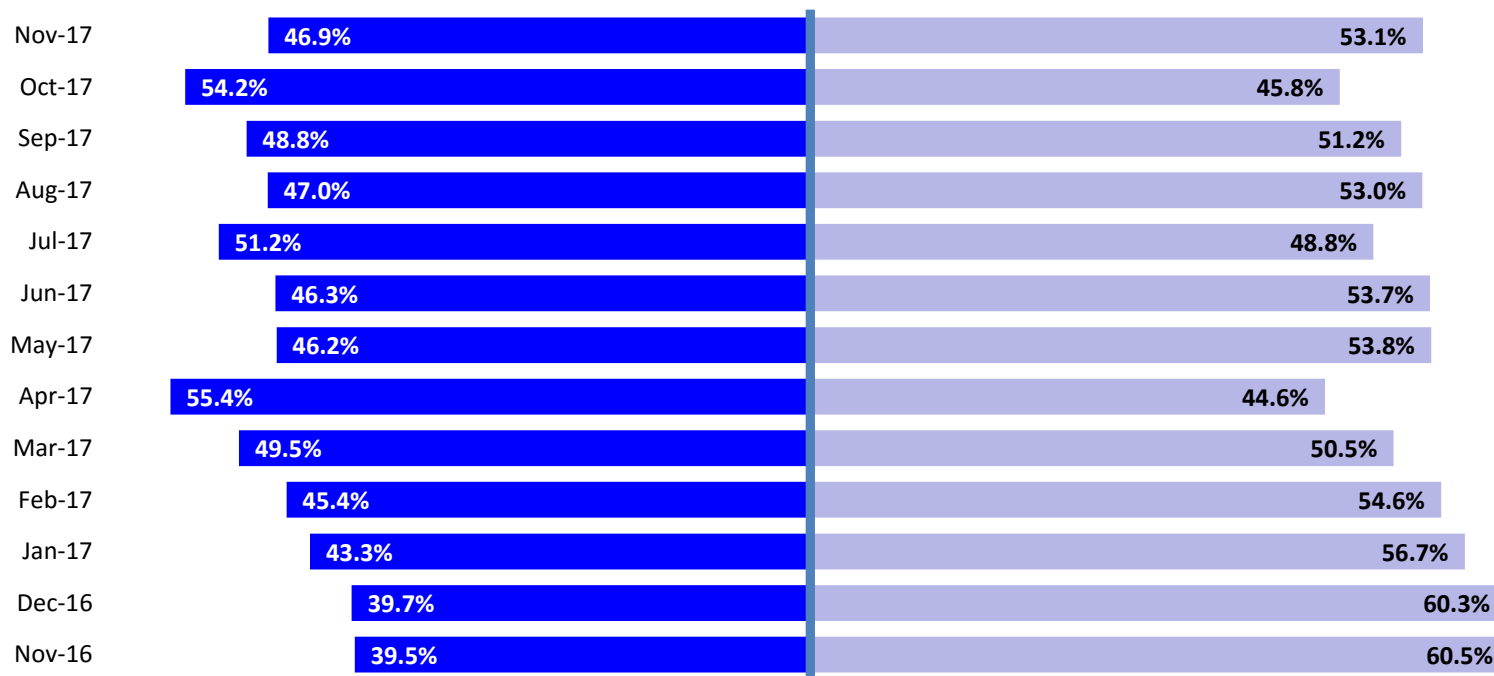
	CY 2013	CY 2014	CY 2015	CY 2016	Jan 2017	Feb 2017	Mar 2017	April 2017	May 2017	Jun 2017	Jul 2017	Aug 2017	Sep 2017	Oct 2017	Nov 2017
Children with Article 10 Filings	9,318	9,900	10,243	11,453	1,354	1,139	1,553	1,307	1,533	1,500	1,336	1,429	1,297	1,606	1,294

Note: The category “Other/Unspecified” includes released with no supervision, no order issued and no outcome specified.



### Remands Approved at Initial Article 10 Hearing by Removal Status

November 2016 – November 2017

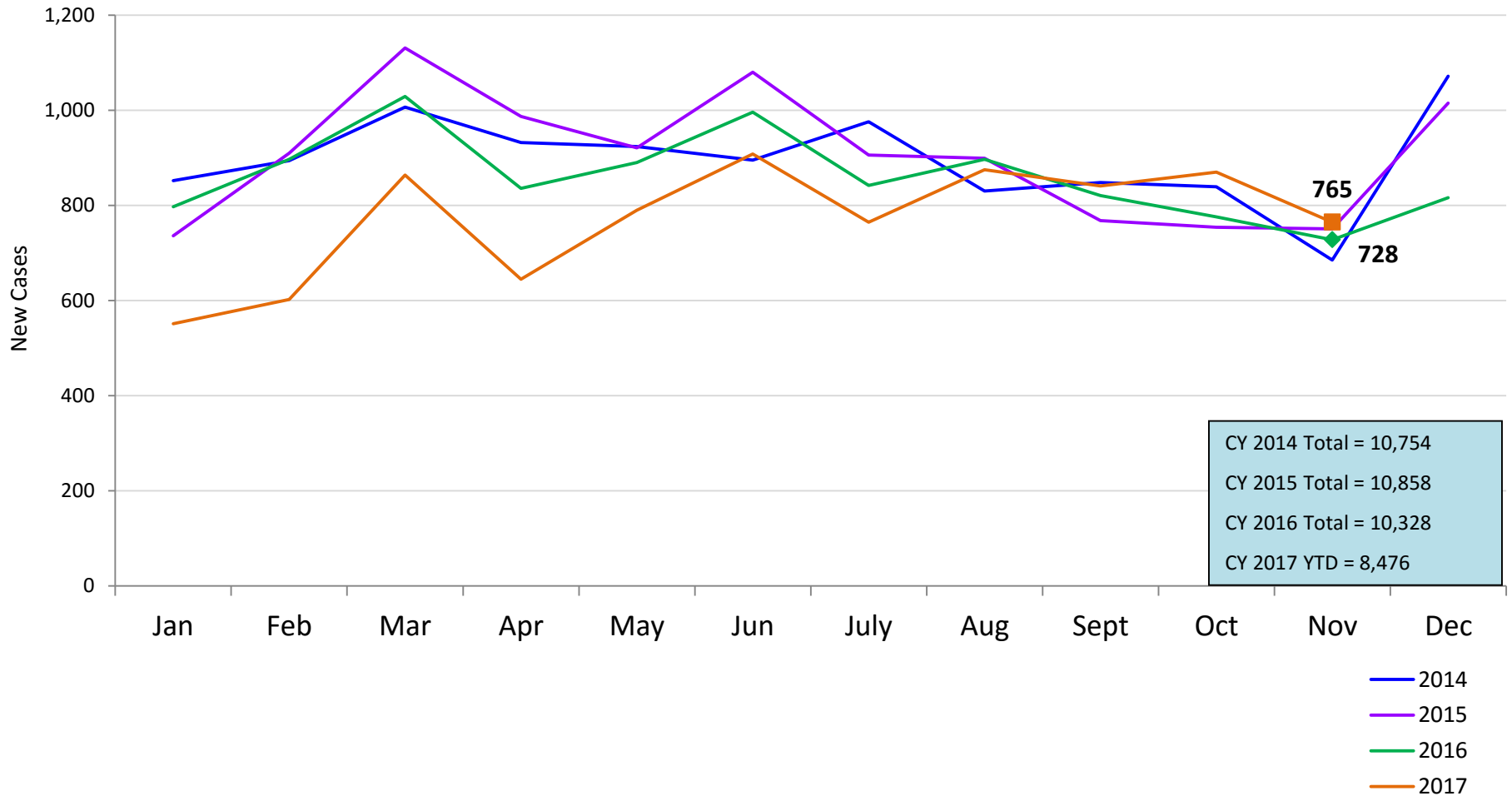


■ Pre-Filing Emergency Removals (court approved at initial hearing) ■ Post-Filing Removals (court ordered at initial hearing)

	Nov 2016	Dec 2016	Jan 2017	Feb 2017	Mar 2017	Apr 2017	May 2017	Jun 2017	Jul 2017	Aug 2017	Sep 2017	Oct 2017	Nov 2017
Children Remanded	223	287	277	194	291	240	305	272	283	283	256	325	262

### New Child Welfare Preventive Cases\*

January 2014 – November 2017



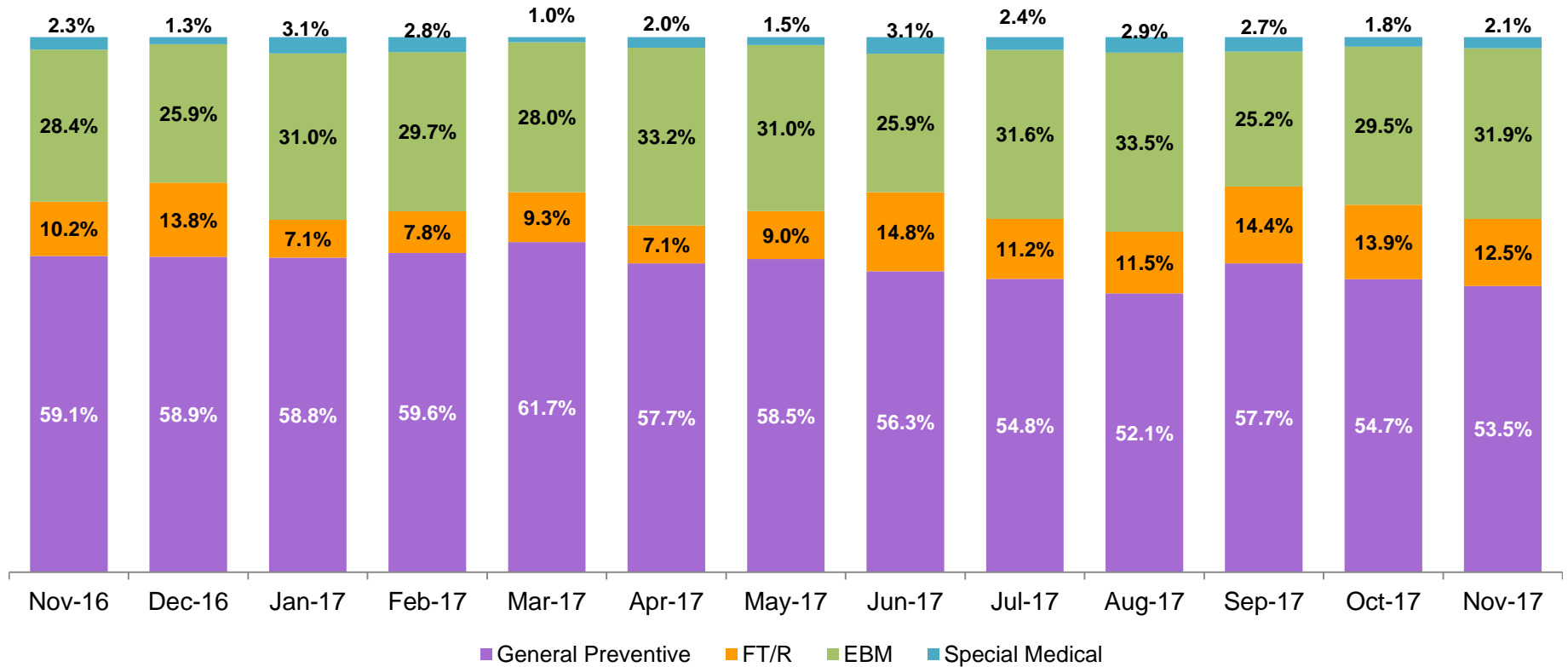
CY 2014 Total = 10,754  
 CY 2015 Total = 10,858  
 CY 2016 Total = 10,328  
 CY 2017 YTD = 8,476

— 2014  
 — 2015  
 — 2016  
 — 2017

\* New preventive cases do not include cases transferred from one preventive program to another. See Pages 33 and 34 of the Appendix for supporting data.

### New Child Welfare Preventive Cases by Program Type \*

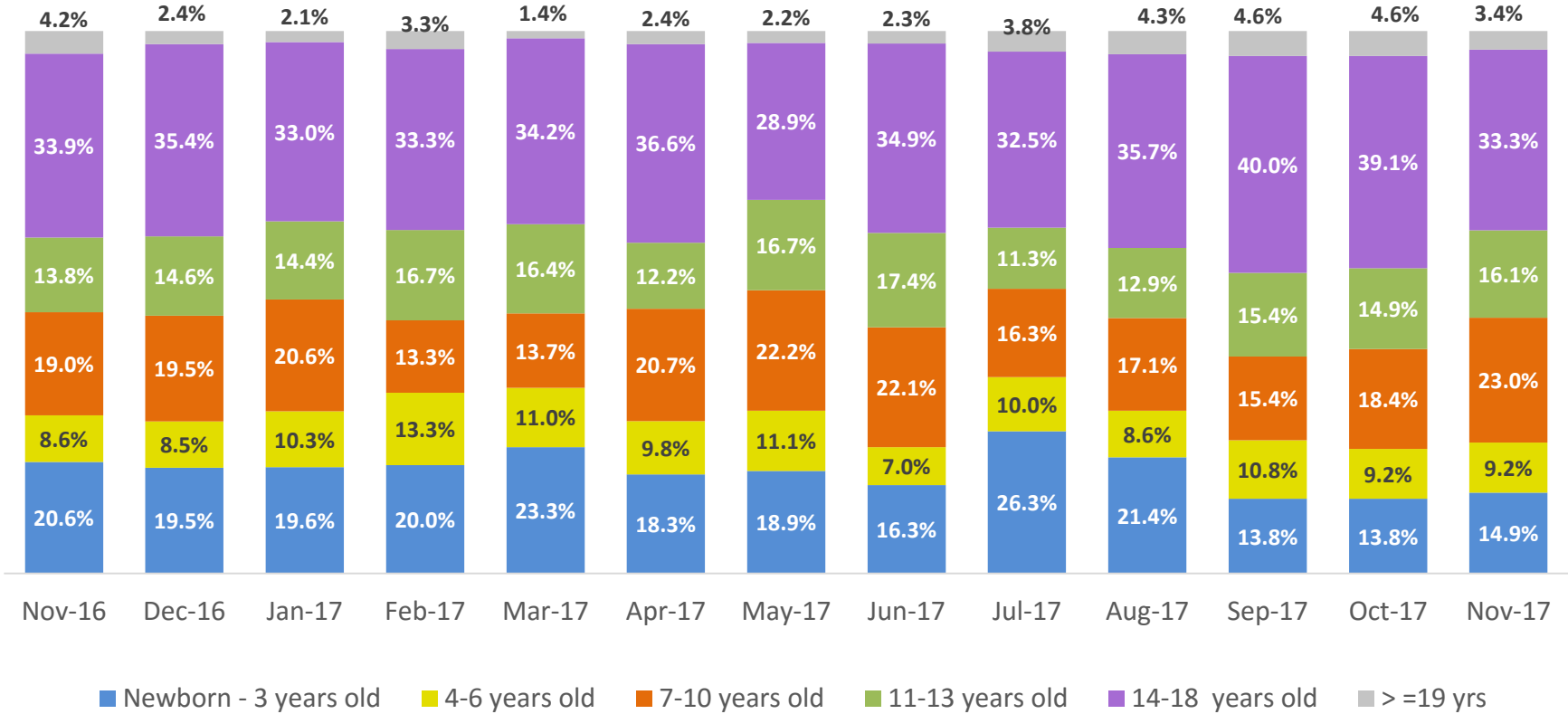
November 2016 – November 2017



	Nov 2016	Dec 2016	Jan 2017	Feb 2017	Mar 2017	Apr 2017	May 2017	Jun 2017	Jul 2017	Aug 2017	Sep 2017	Oct 2017	Nov 2017
Number of New Preventive Cases	728	816	551	602	864	645	790	908	765	875	841	870	765

\* New preventive cases exclude cases transferred from one preventive program to another.

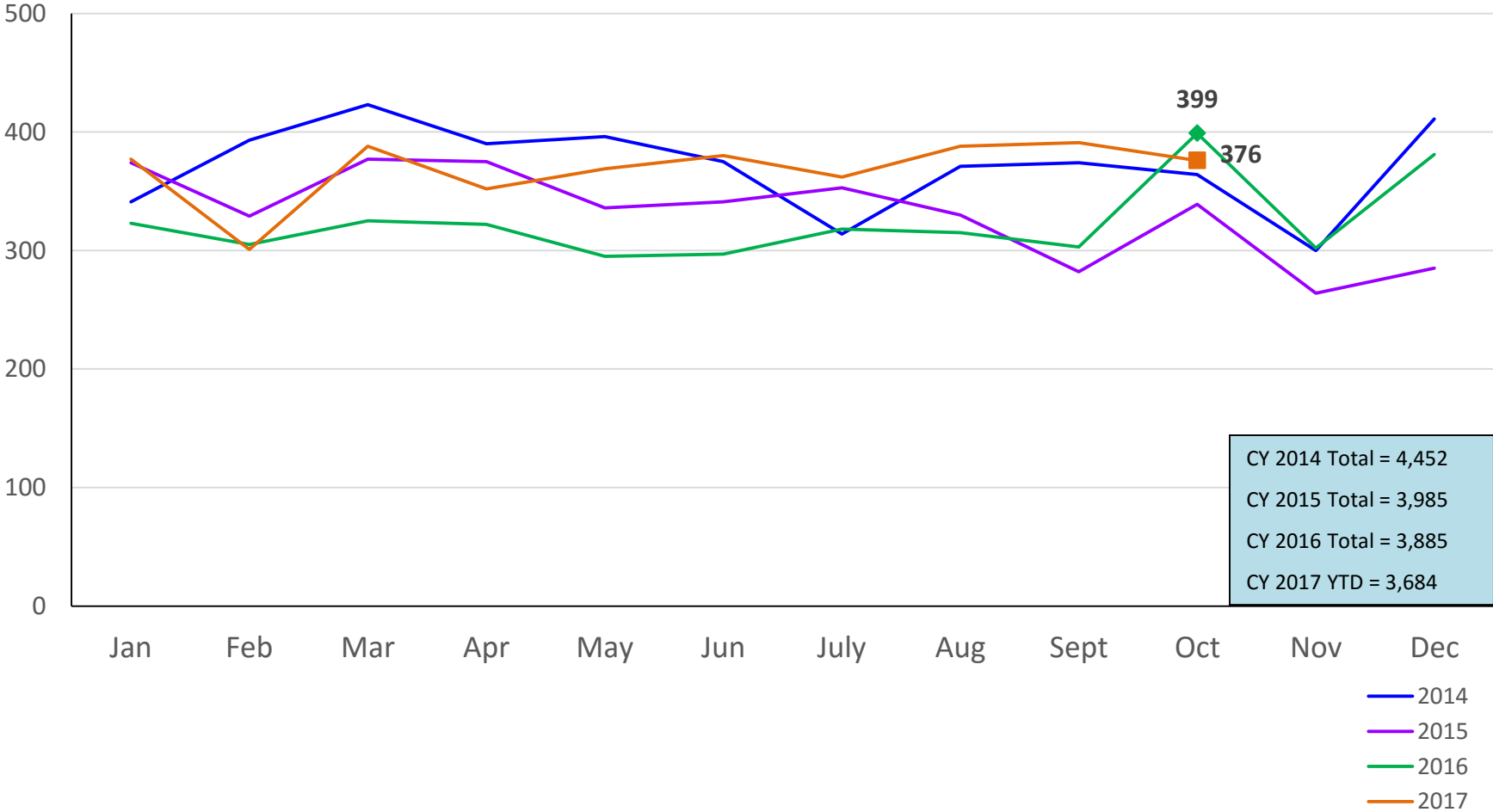
### Average Daily Children’s Center Population November 2016 – November 2017



	Nov 2016	Dec 2016	Jan 2017	Feb 2017	Mar 2017	Apr 2017	May 2017	Jun 2017	Jul 2017	Aug 2017	Sep 2017	Oct 2017	Nov 2017
Average Number of Children	62	82	97	60	73	82	90	86	80	70	65	87	87

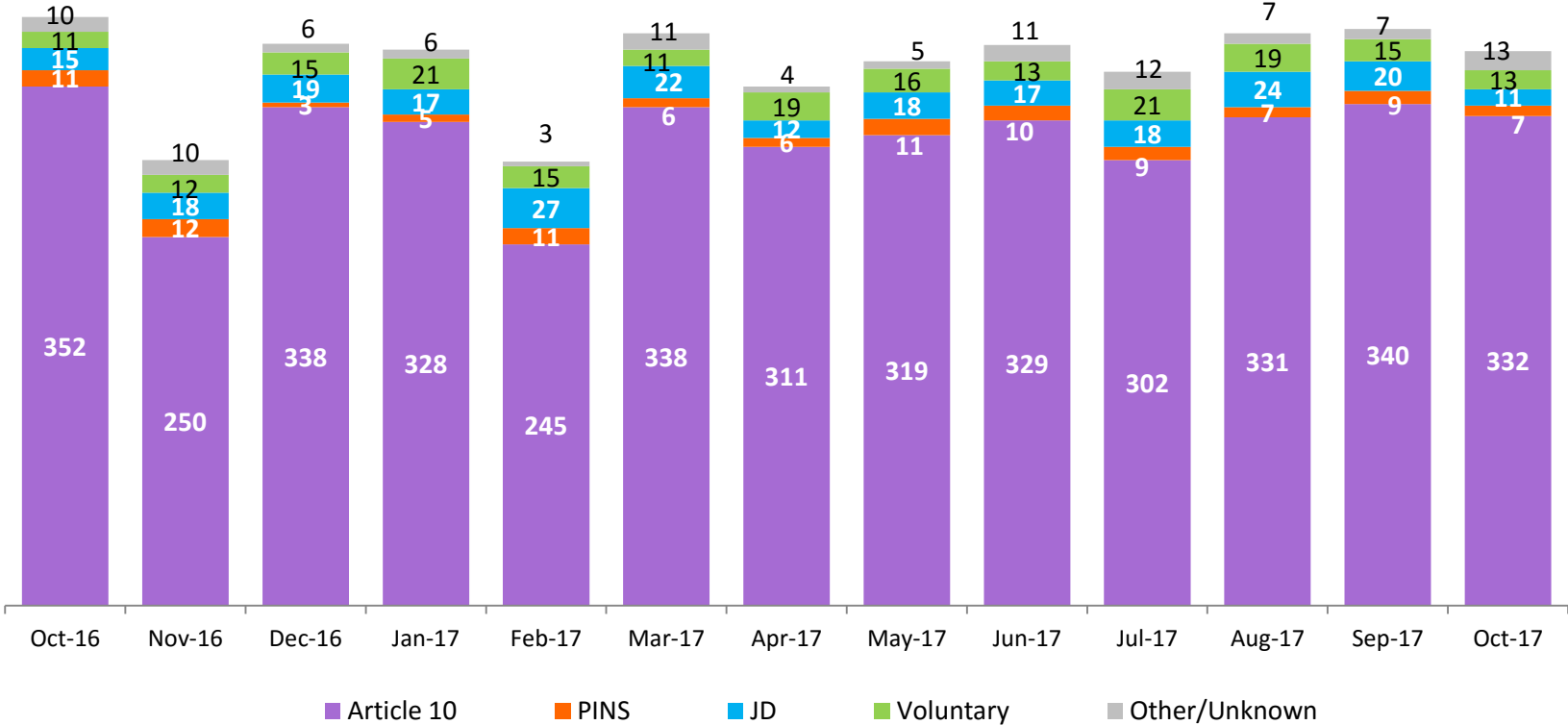
### New Monthly Placements of Children into Foster Care

January 2014 – October 2017



### Reason for New Placements of Children into Foster Care

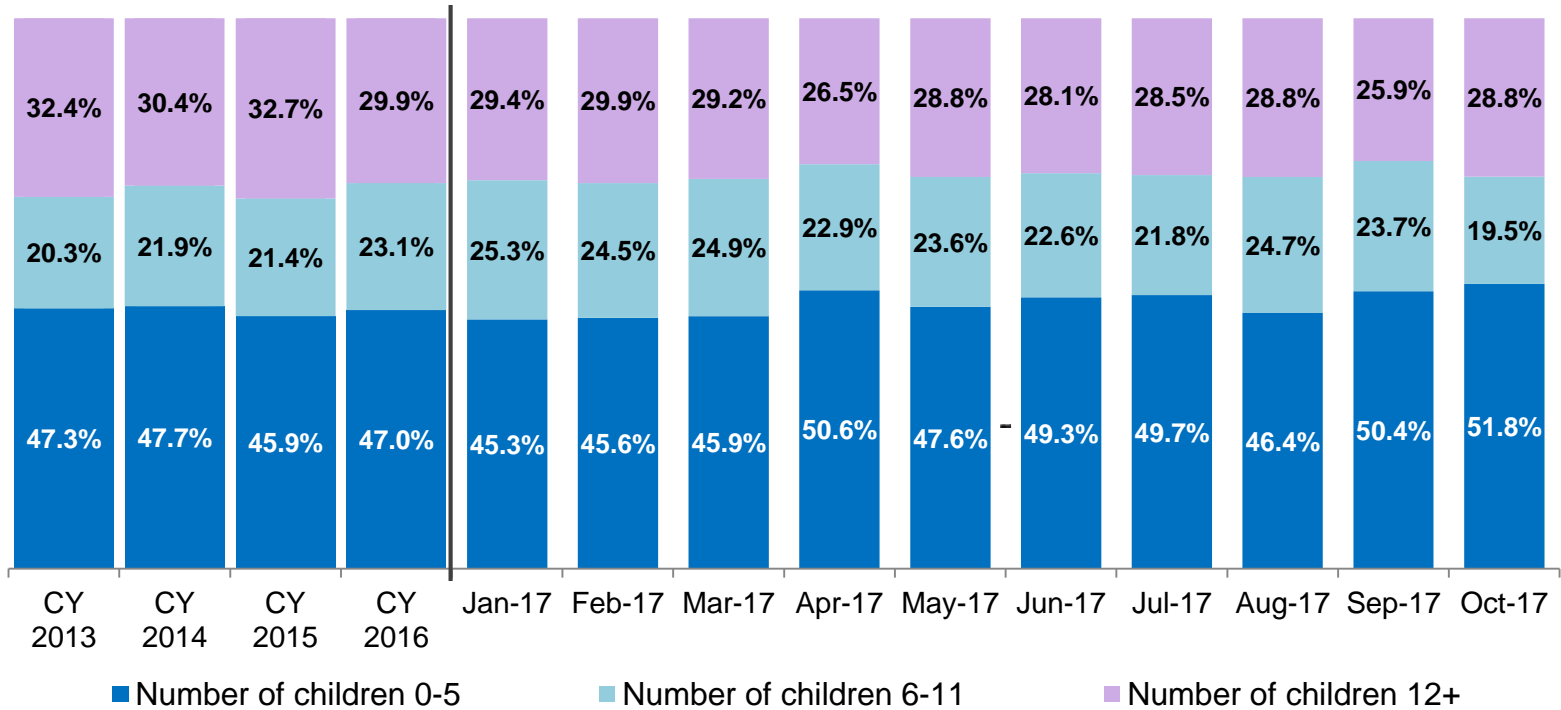
October 2016 – October 2017



	Oct 2016	Nov 2016	Dec 2016	Jan 2017	Feb 2017	Mar 2017	Apr 2017	May 2017	Jun 2017	Jul 2017	Aug 2017	Sep 2017	Oct 2017
Number of Placements	399	302	381	377	301	388	352	369	380	362	388	391	376

### New Placements of Children into Foster Care\* by Age

CY 2013 - October 2017

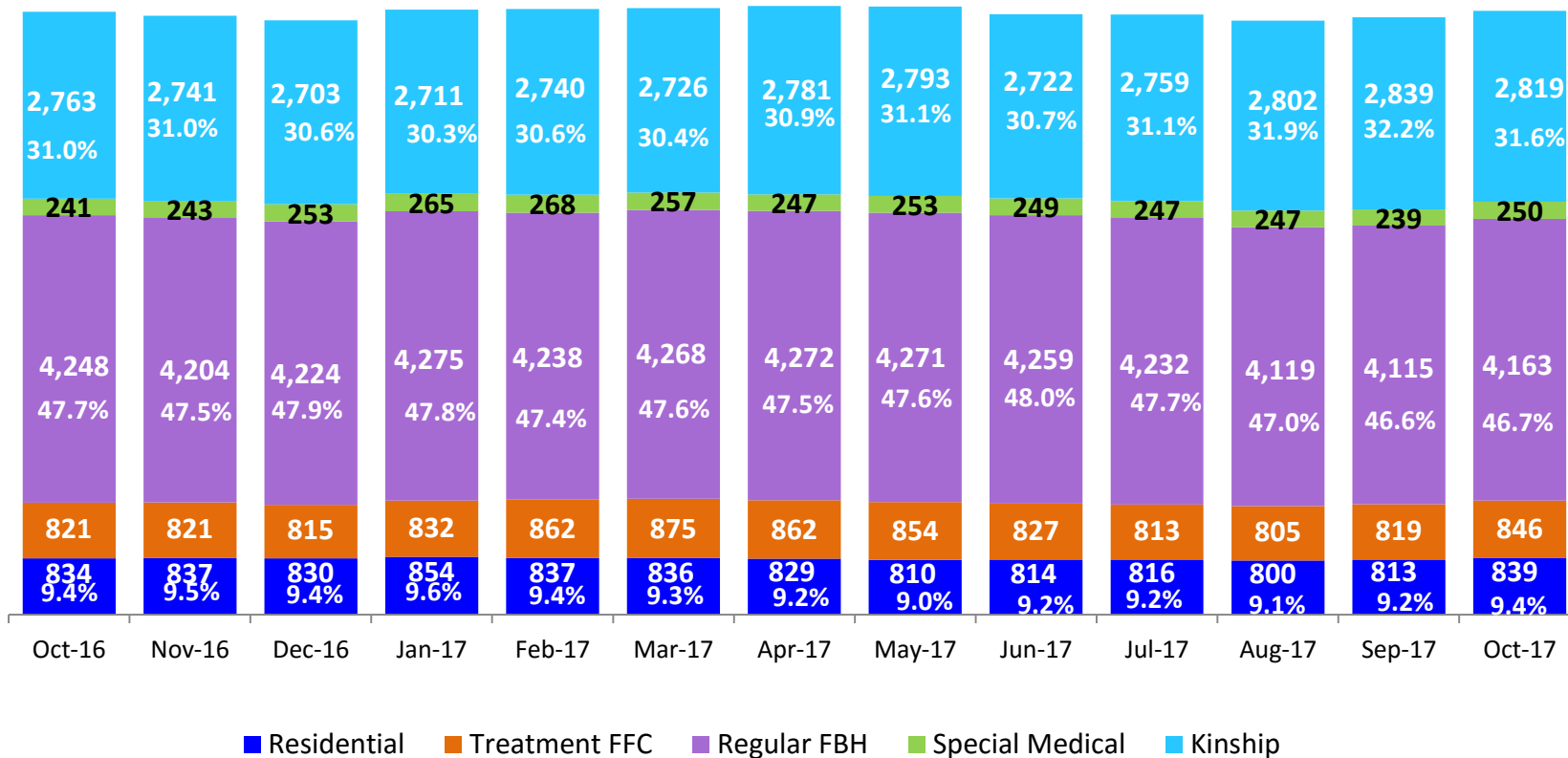


	CY 2013	CY 2014	CY 2015	CY 2016	Jan 2017	Feb 2017	Mar 2017	Apr 2017	May 2017	Jun 2017	Jul 2017	Aug 2017	Sep 2017	Oct 2017
Number of Placements	4,283	4,160	3,760	3,647	360	274	366	340	351	363	344	364	371	365

\*Excludes CTH placements.

### Children in Foster Care \*

October 2016 – October 2017 (end of month)



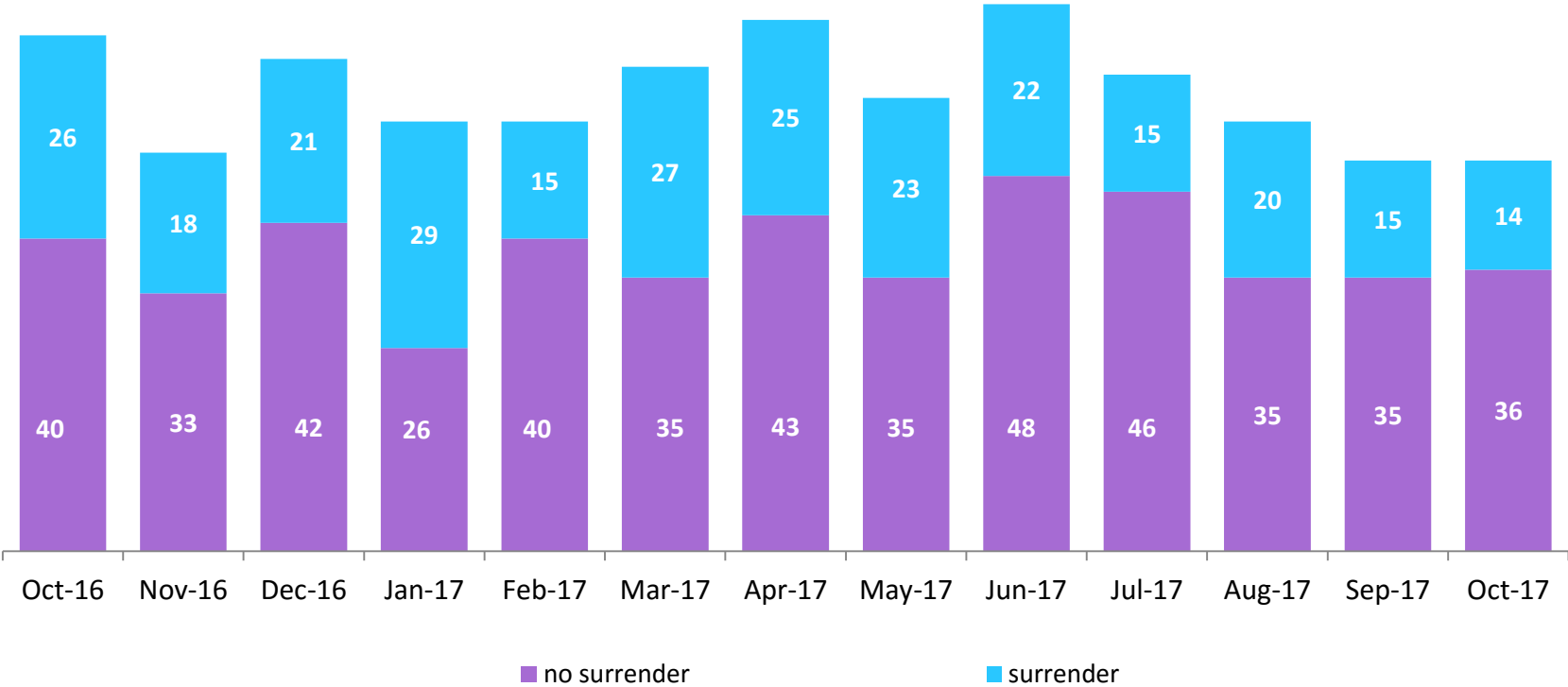
	Oct 2016	Nov 2016	Dec 2016	Jan 2017	Feb 2017	Mar 2017	Apr 2017	May 2017	Jun 2017	Jul 2017	Aug 2017	Sep 2017	Oct 2017
Number in Foster Care	8,907	8,846	8,825	8,937	8,945	8,962	8,991	8,981	8,871	8,867	8,773	8,825	8,917

\*Excludes CTH placements and includes children in 24 hour care and approximately 200 young children who are living in foster homes or residential care facilities with their mothers who are in foster care (8D children).



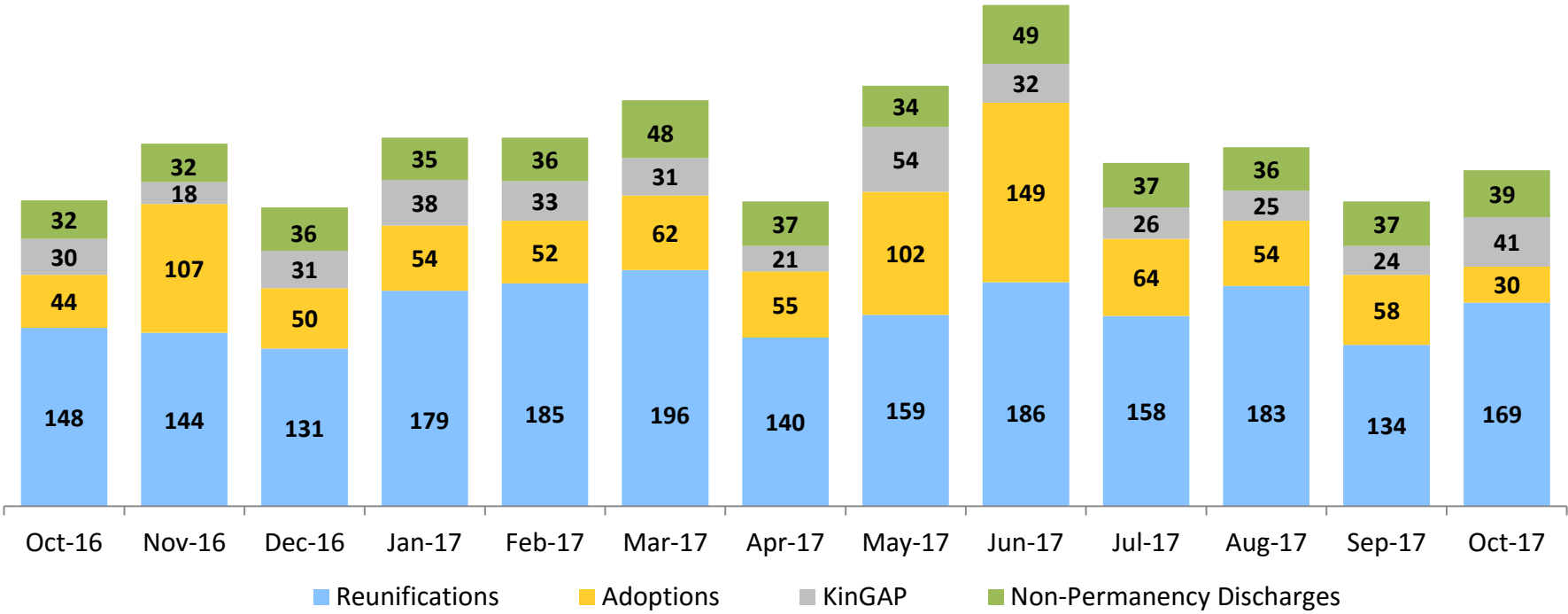
### Children Freed for Adoption, Surrender by at Least One Parent

October 2016 – October 2017



	Oct 2016	Nov 2016	Dec 2016	Jan 2017	Feb 2017	Mar 2017	Apr 2017	May 2017	Jun 2017	Jul 2017	Aug 2017	Sep 2017	Oct 2017
Number Freed for Adoption	66	51	63	55	55	62	68	58	70	61	55	50	50

### Permanency and Non-Permanency\* Discharges from Foster Care\*\* October 2016 – October 2017

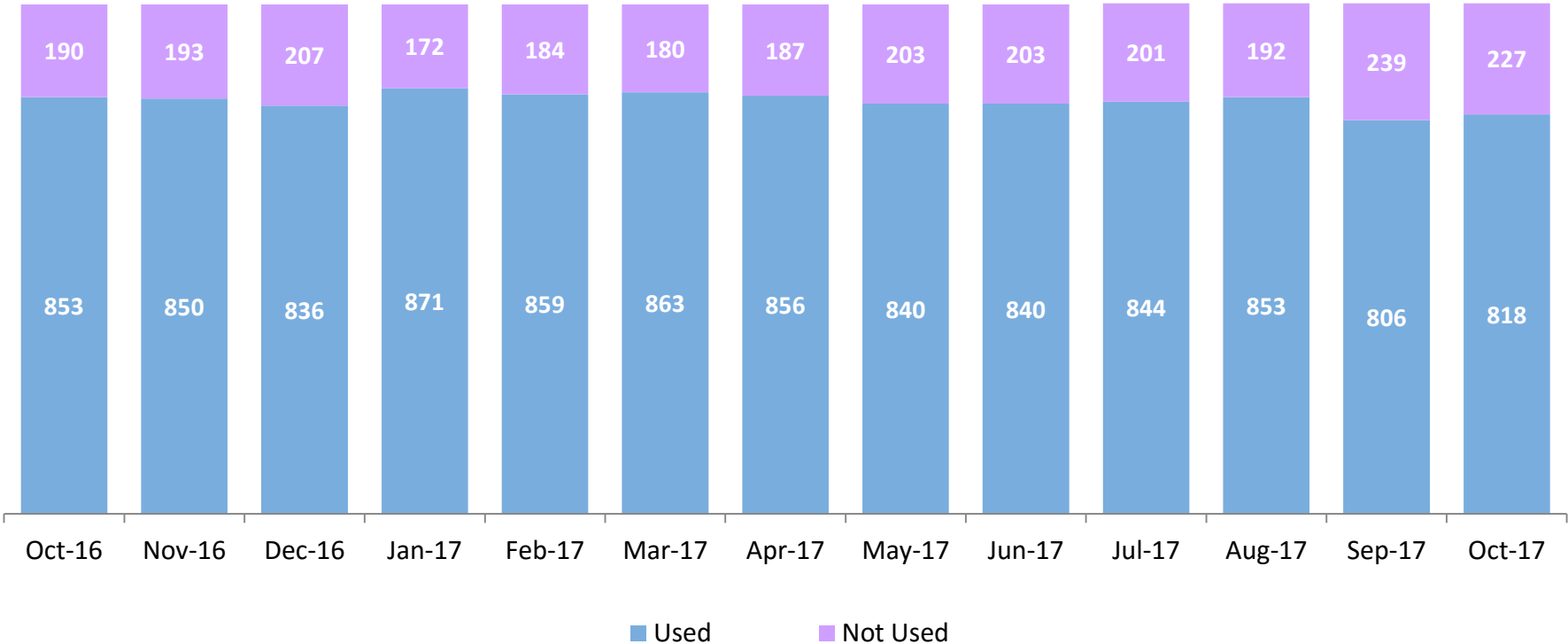


	Oct 2016	Nov 2016	Dec 2016	Jan 2017	Feb 2017	Mar 2017	Apr 2017	May 2017	Jun 2017	Jul 2017	Aug 2017	Sep 2017	Oct 2017
Number of Discharges	254	301	248	306	306	337	253	349	416	285	298	253	279

\*Non-permanency discharges include AWOL, APPLA , other discharge destinations such as psychiatric institutions and correctional facilities and discharges with unspecified destinations.

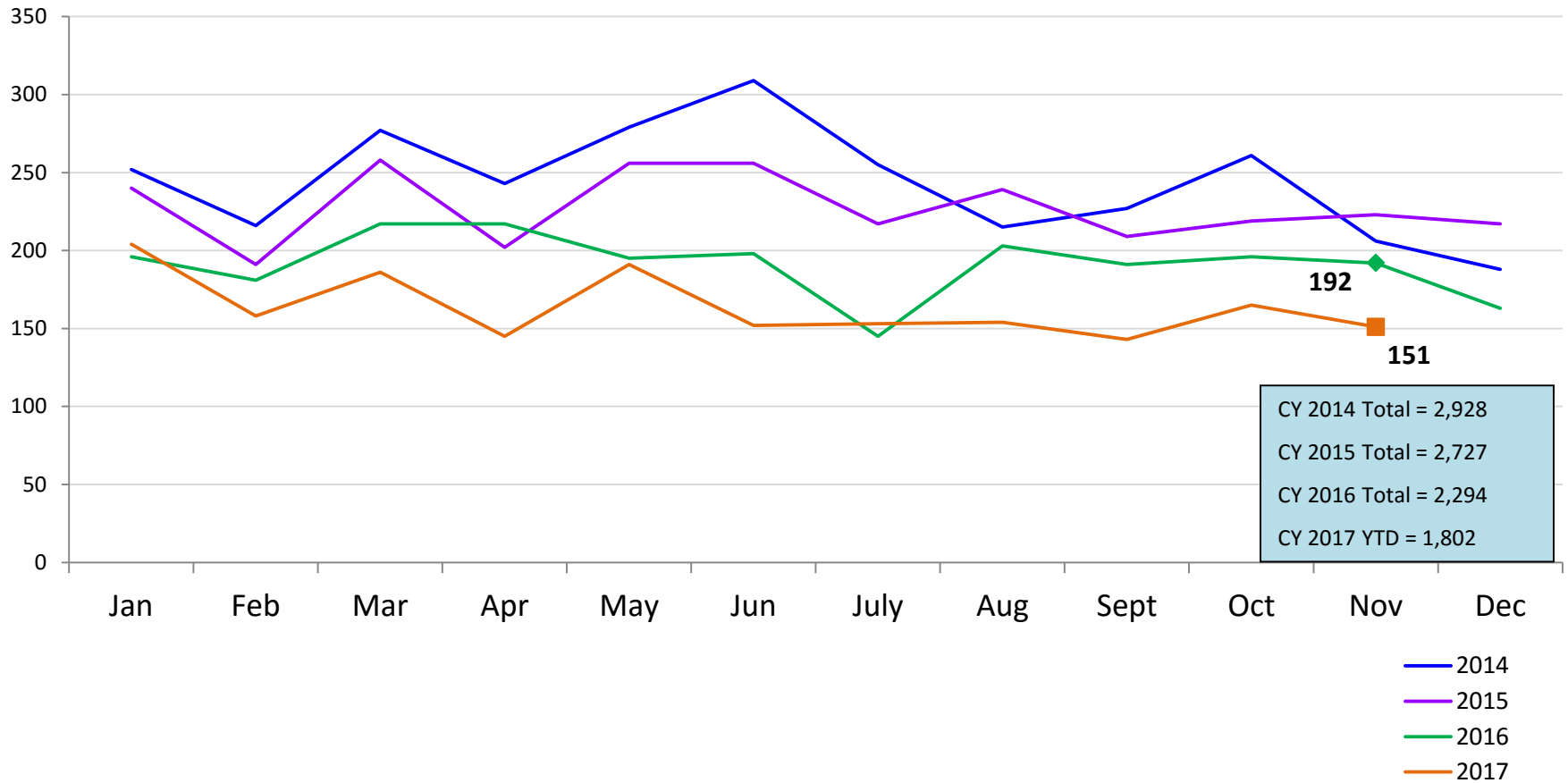
\*\*Excludes discharges of youth who entered care in CTH.

### Residential Care Capacity and Utilization October 2016 – October 2017



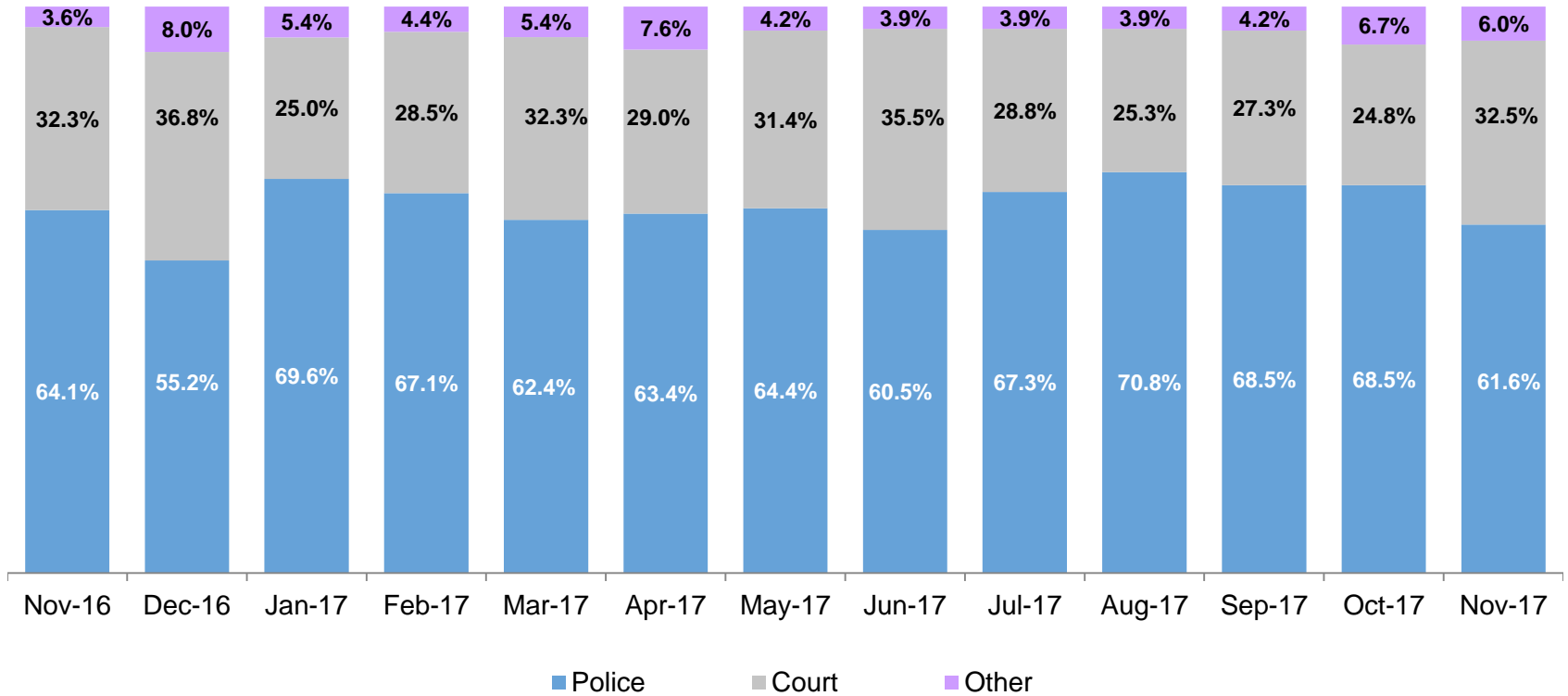
	Oct 2016	Nov 2016	Dec 2016	Jan 2017	Feb 2017	Mar 2017	Apr 2017	May 2017	Jun 2017	Jul 2017	Aug 2017	Sep 2017	Oct 2017
Capacity	1,043	1,043	1,043	1,043	1,043	1,043	1,043	1,043	1,043	1,045	1,045	1,045	1,045

### Total Monthly Admissions to Detention January 2014 – November 2017 (Monthly Total)



### Admit Authority, Detention Admissions

November 2016 – November 2017 (Monthly Total)

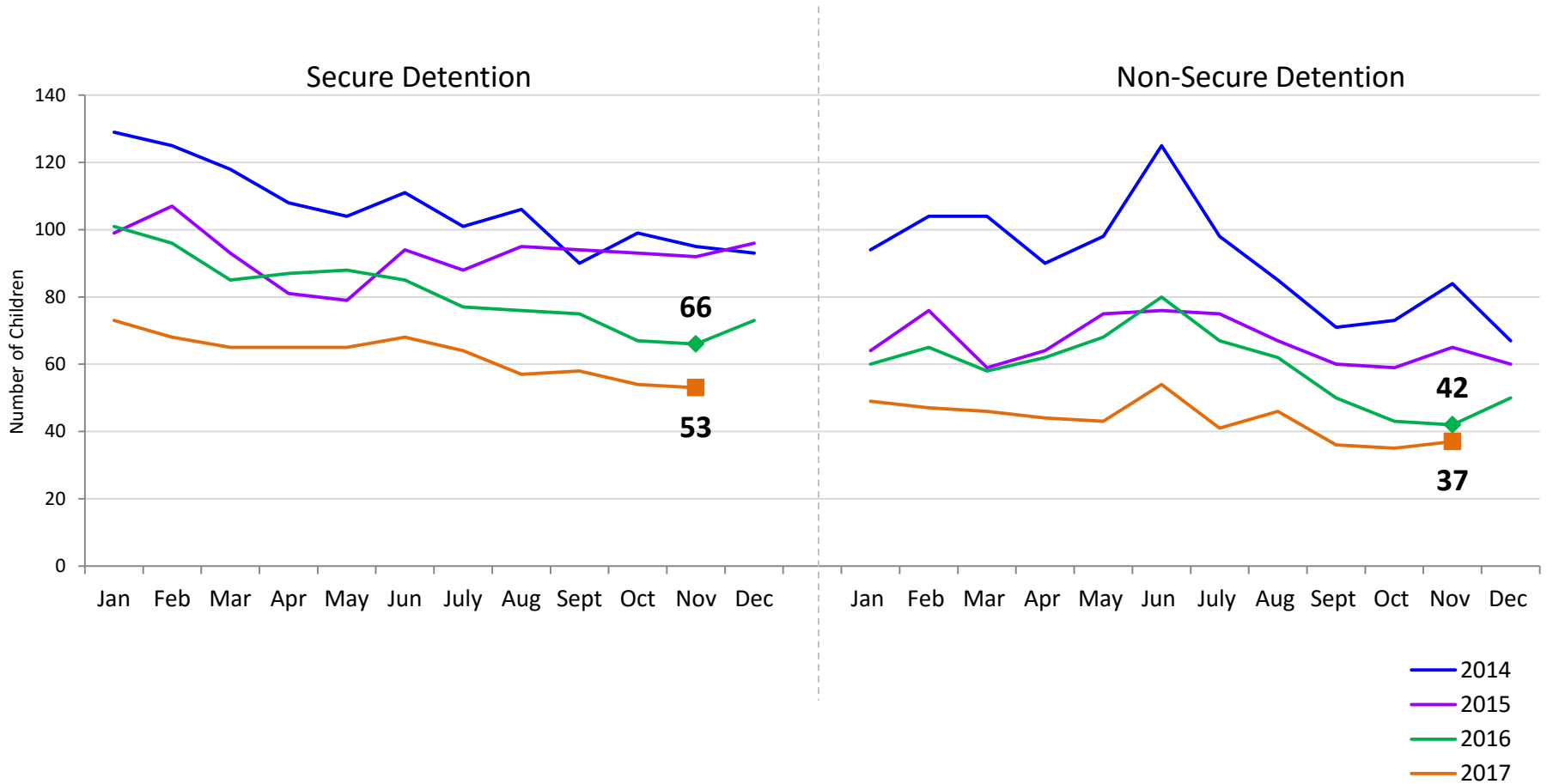


	Nov-16	Dec-16	Jan-17	Feb-17	Mar-17	Apr-17	May-17	Jun-17	Jul-17	Aug-17	Sep-17	Oct-17	Nov-17
Number of Admissions	192	163	204	158	186	145	191	152	153	154	143	165	151

Note: Other Admit Authority includes the Sheriff Department, Department of Corrections and ACS.

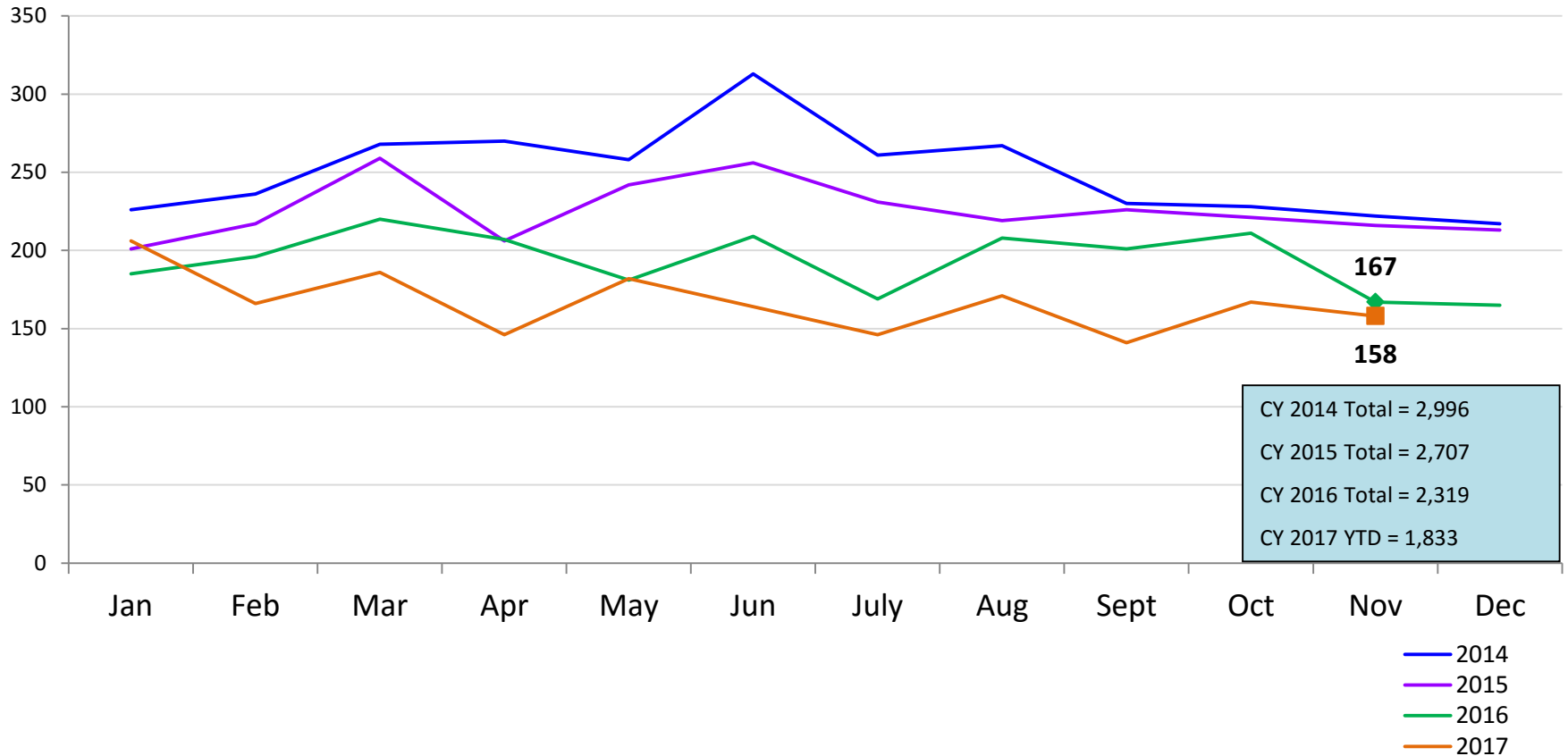
### Monthly Average Daily Population

January 2014 – November 2017



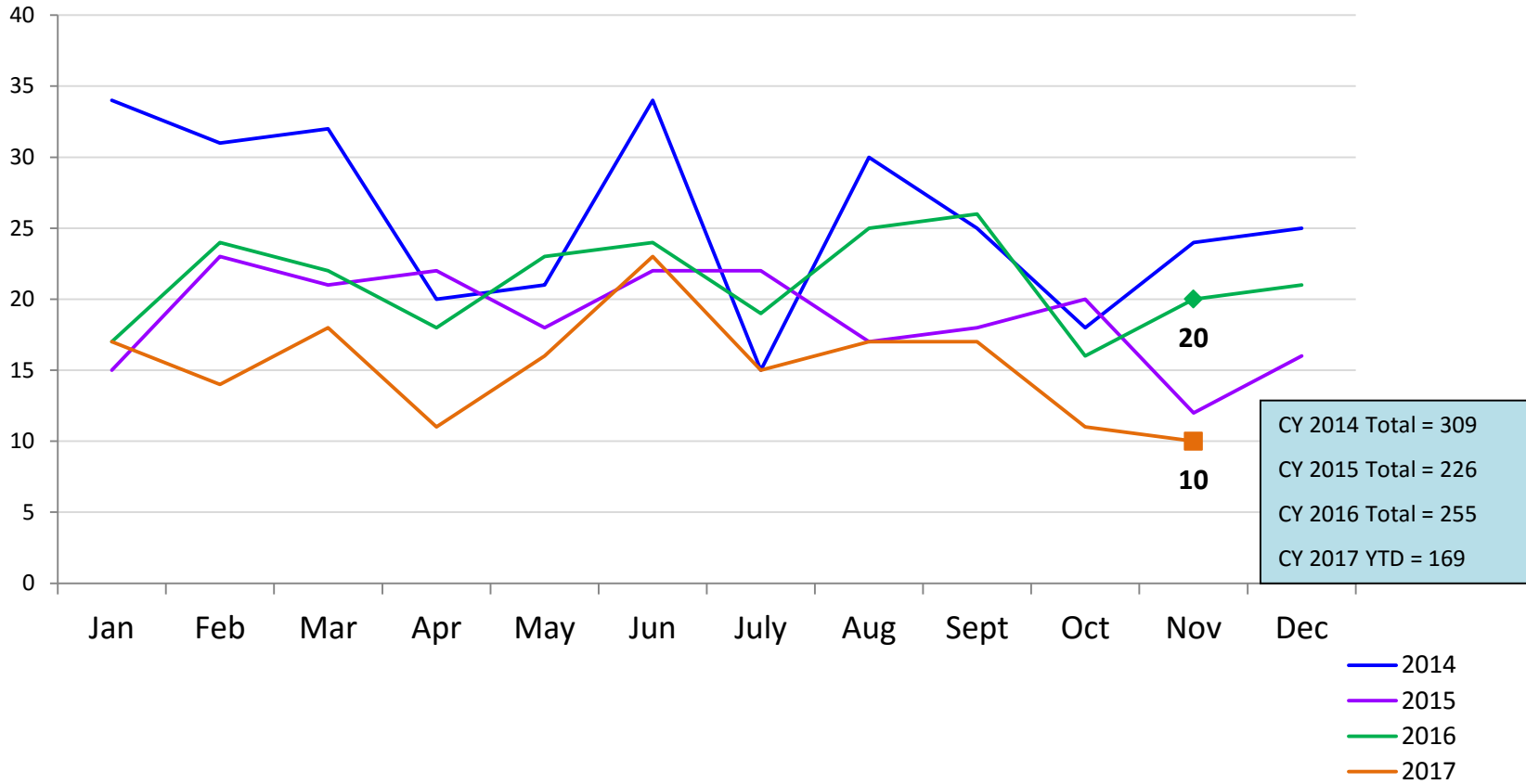
## Total Monthly Releases from Detention

January 2014 – November 2017 (Monthly Total)



### Close to Home Admissions\*

January 2014 – November 2017 (Monthly Total)

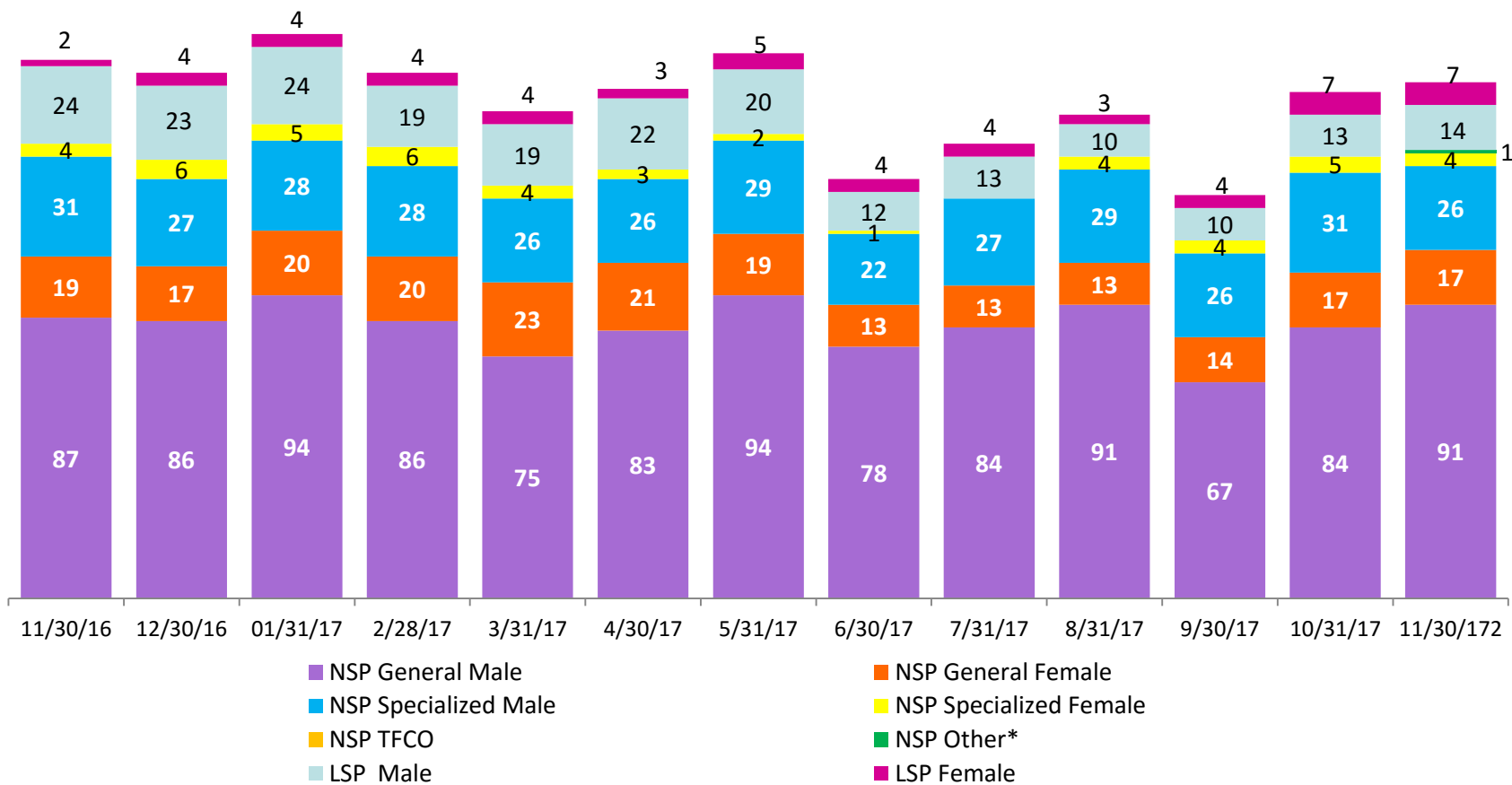


\*Beginning in December 2015 Close to Home admissions include LSP as well as NSP.



# CTH Placement, in 24-hour Care

November 2016 – November 2017 (end of month)

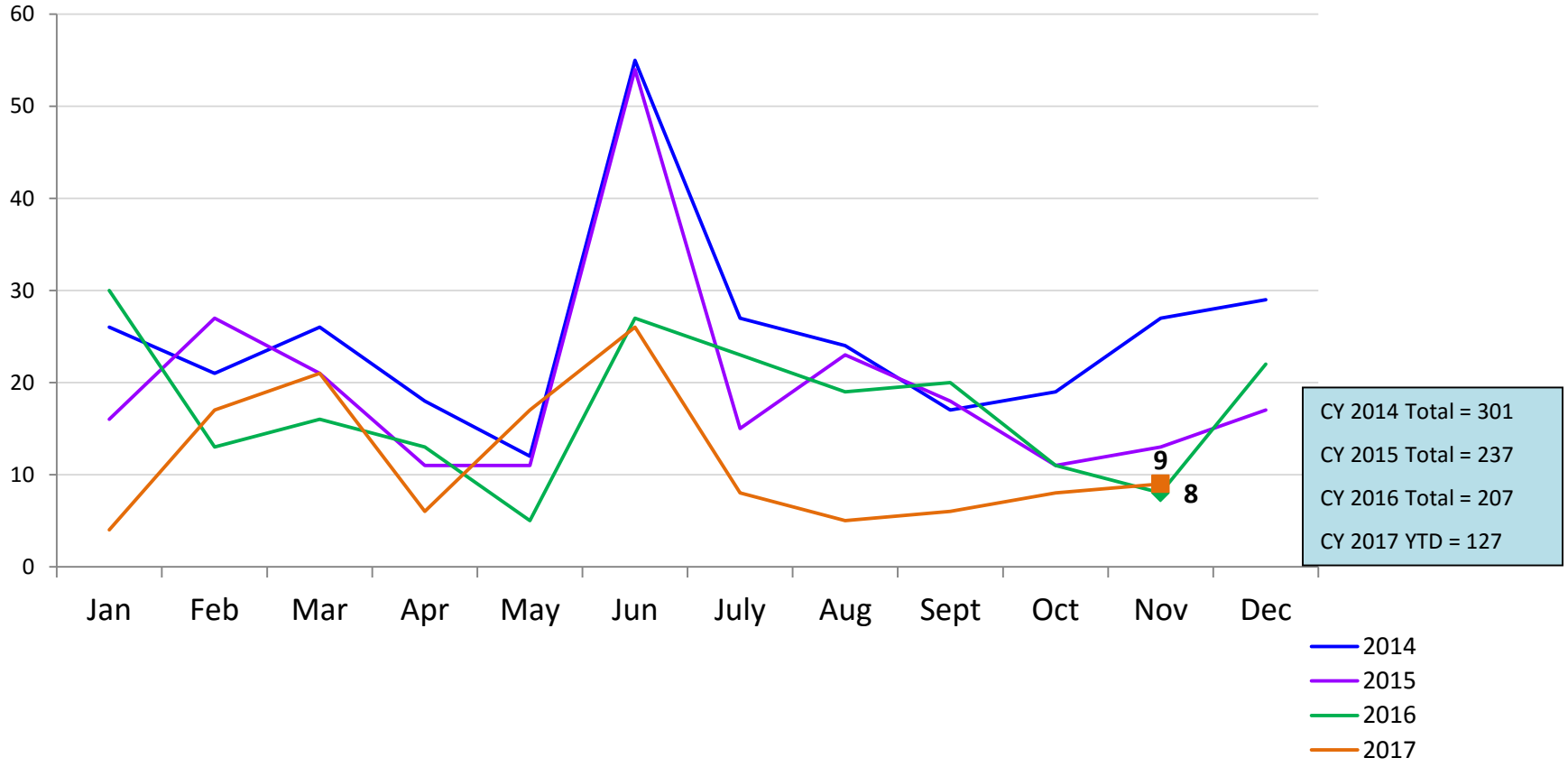


Number in Placement													
	11/30/16	12/30/16	1/31/17	2/28/17	3/31/17	4/30/17	5/31/17	6/30/17	7/31/17	8/31/17	9/30/17	10/31/17	11/30/17
NSP	141	136	147	140	128	133	144	114	124	137	111	137	139
LSP	26	27	28	23	23	25	25	16	17	13	14	20	21

\*NSP Other includes youth in child welfare and mother/child placements.

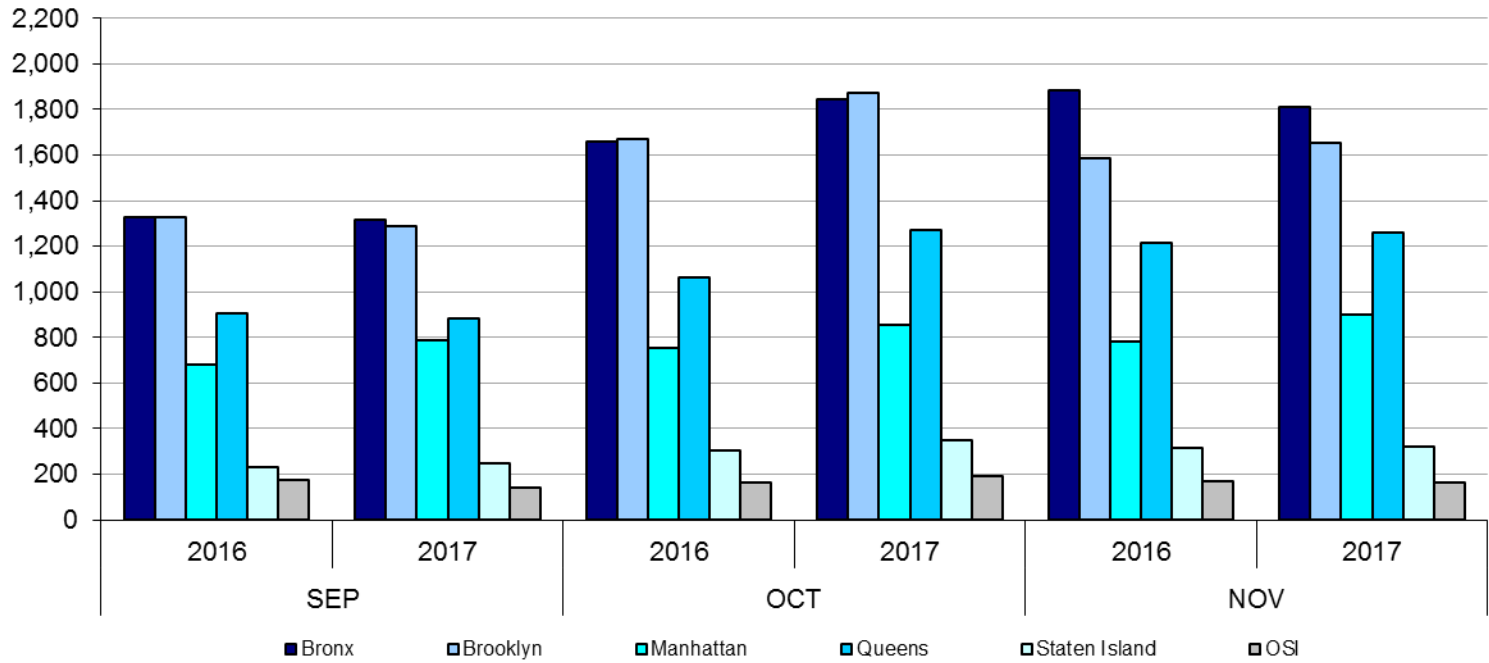
### Releases from Close to Home Placement to Aftercare

January 2014 – November 2017 (Monthly Total)



# Appendix

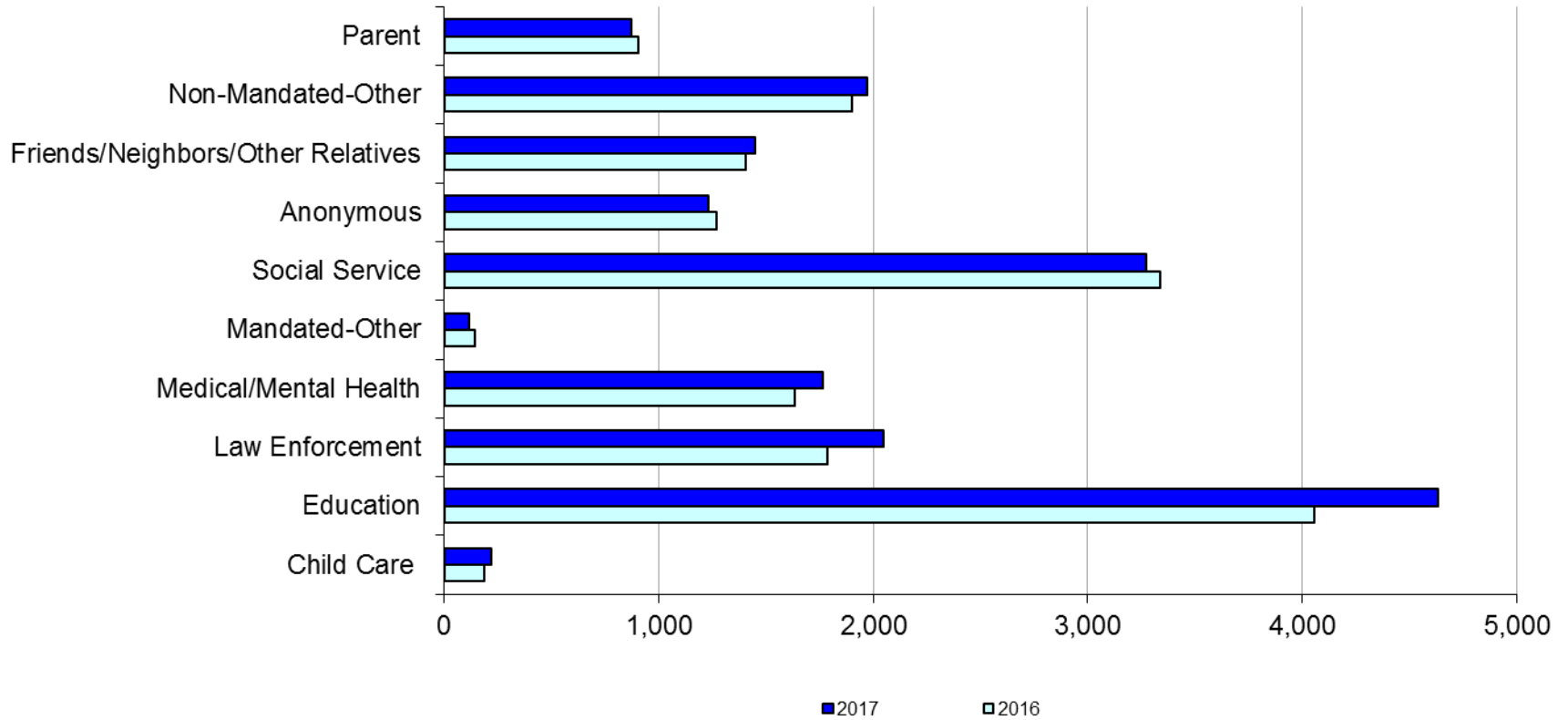
Figure 1: SCR Intakes by Borough, SEP 16 - NOV 16 and SEP 17 - NOV 17



**Table 1 - SCR Intake Changes by Borough, SEP 16 - NOV 16 and SEP 17 – NOV 17**

Month	Year	Bronx	Brooklyn	Manhattan	Queens	Staten Island	OSI	Other	Total
SEP	2016	1,329	1,328	680	908	230	173	207	4,855
	2017	1,317	1,288	787	881	247	138	179	4,837
	% Change	-0.9%	-3.0%	15.7%	-3.0%	7.4%	-20.2%	-13.5%	-0.4%
OCT	2016	1,657	1,668	754	1,065	304	165	206	5,819
	2017	1,845	1,872	857	1,272	348	192	188	6,574
	% Change	11.3%	12.2%	13.7%	19.4%	14.5%	16.4%	-8.7%	13.0%
NOV	2016	1,882	1,587	784	1,213	317	167	172	6,122
	2017	1,813	1,656	898	1,259	323	165	147	6,261
	% Change	-3.7%	4.3%	14.5%	3.8%	1.9%	-1.2%	-14.5%	2.3%
Total	2016	4,868	4,583	2,218	3,186	851	505	585	16,796
	2017	4,975	4,816	2,542	3,412	918	495	514	17,672
	% Change	2.2%	5.1%	14.6%	7.1%	7.9%	-2.0%	-12.1%	5.2%

**Figure 2: Citywide SCR Intakes by Reporter Group, SEP 16 – NOV 16 and SEP 17 - NOV 17**

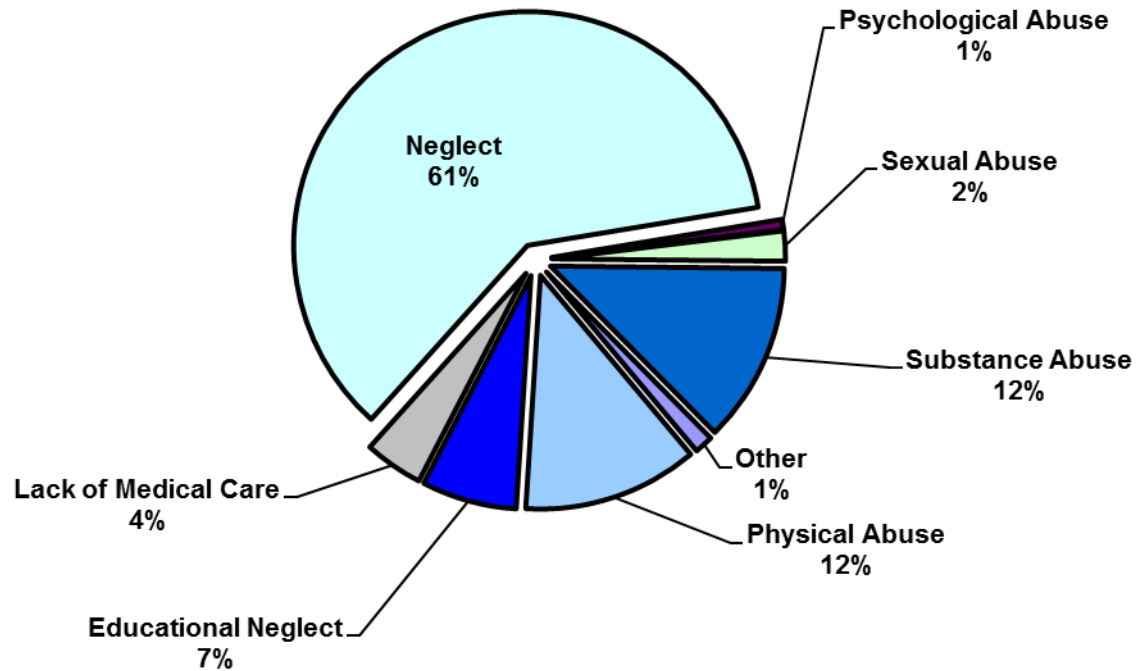


**Table 2 - SCR Intakes by Reporter Group, SEP 16 - NOV 16 and SEP 17 - NOV 17**

Year	Child Care/ Substitute Care Personnel	Educational Personnel	Law Enforcement	Medical/ Mental Health Personnel	Mandated- Other	Social Service Personnel	Anonymous	Friends/ Neighbors/ Other Relatives	Non- Mandated- Other	Parent	Foster Parent	*Total
<b>Bronx</b>												
2016	66	1,273	474	481	30	1,012	351	381	575	222	0	4,868
2017	49	1,364	491	523	29	945	362	439	551	219	1	4,975
% Change	-25.8%	7.1%	3.6%	8.7%	-3.3%	-6.6%	3.1%	15.2%	-4.2%	-1.4%	--	2.2%
<b>Brooklyn</b>												
2016	42	1,148	597	403	49	836	362	404	501	237	2	4,583
2017	68	1,286	652	443	22	874	325	388	526	229	1	4,816
% Change	61.9%	12.0%	9.2%	9.9%	-55.1%	4.5%	-10.2%	-4.0%	5.0%	-3.4%	-50.0%	5.1%
<b>Manhattan</b>												
2016	23	446	265	254	20	480	178	177	261	112	0	2,218
2017	34	530	324	278	19	488	206	242	308	112	0	2,542
% Change	47.8%	18.8%	22.3%	9.4%	-5.0%	1.7%	15.7%	36.7%	18.0%	0.0%	--	14.6%
<b>Queens</b>												
2016	25	884	265	295	28	640	242	284	351	169	1	3,186
2017	27	1,074	377	338	27	603	212	243	360	147	1	3,412
% Change	8.0%	21.5%	42.3%	14.6%	-3.6%	-5.8%	-12.4%	-14.4%	2.6%	-13.0%	0.0%	7.1%
<b>Staten Island</b>												
2016	5	223	76	87	4	153	81	98	77	47	0	851
2017	11	286	78	91	4	162	79	82	83	41	1	918
% Change	120.0%	28.3%	2.6%	4.6%	0.0%	5.9%	-2.5%	-16.3%	7.8%	-12.8%	--	7.9%
<b>OSI</b>												
2016	20	43	33	52	7	96	33	30	96	91	3	505
2017	26	48	31	39	12	95	34	34	102	73	1	495
% Change	30.0%	11.6%	-6.1%	-25.0%	71.4%	-1.0%	3.0%	13.3%	6.3%	-19.8%	-66.7%	-2.0%
<b>Other</b>												
2016	6	41	76	64	4	123	22	31	39	30	1	585
2017	5	46	94	52	3	107	15	21	41	53	1	514
% Change	-16.7%	12.2%	23.7%	-18.8%	-25.0%	-13.0%	-31.8%	-32.3%	5.1%	76.7%	0.0%	-12.1%
<b>Citywide</b>												
2016	187	4,058	1,786	1,636	142	3,340	1,269	1,405	1,900	908	7	16,796
2017	220	4,634	2,047	1,764	116	3,274	1,233	1,449	1,971	874	6	17,672
% Change	17.6%	14.2%	14.6%	7.8%	-18.3%	-2.0%	-2.8%	3.1%	3.7%	-3.7%	-14.3%	5.2%

\*There is a small number of intakes with unknown reporter that is included in the totals.

**Figure 3: SCR Allegations, SEP 17 – NOV 17**



Total Allegations = 43,083

Allegations are grouped as follows: Physical Abuse - burn, fatality, fracture, choking, twisting, shaking, excessive corporal punishment, internal injuries, lacerations, bruises, welts, poisoning, noxious substances; Educational Neglect – educational neglect; Lack of Medical Care – lack of medical care; Neglect - inadequate guardianship, inadequate food, clothing, shelter, lack of supervision, malnutrition, failure to thrive, swelling, dislocations, sprains; Psychological Abuse - isolation, emotional neglect; Sexual Abuse – sexual abuse; Substance Abuse - parental drug use, child drug use; and Other - abandonment, inappropriate custodial conduct.

**Table 3 - SCR Allegations, SEP 16 - NOV 16 and SEP 17 - NOV 17**

Year	Physical Abuse	Educational Neglect	Lack of Medical Care	Neglect	Psychological Abuse	Sexual Abuse	Substance Abuse	Other	Total
<b>Bronx</b>									
2016	1,377	1,139	590	7,933	81	216	1,670	106	13,112
2017	1,342	1,075	577	7,654	75	240	1,575	93	12,631
% Change	-2.5%	-5.6%	-2.2%	-3.5%	-7.4%	11.1%	-5.7%	-12.3%	-3.7%
<b>Brooklyn</b>									
2016	1,389	904	479	7,123	64	245	1,517	128	11,849
2017	1,516	730	456	7,122	86	270	1,453	108	11,741
% Change	9.1%	-19.2%	-4.8%	0.0%	34.4%	10.2%	-4.2%	-15.6%	-0.9%
<b>Manhattan</b>									
2016	551	332	225	3012	44	92	598	59	4,913
2017	592	366	219	3143	24	95	735	33	5,207
% Change	7.4%	10.2%	-2.7%	4.3%	-45.5%	3.3%	22.9%	-44.1%	6.0%
<b>Queens</b>									
2016	1,001	426	307	4,663	76	147	928	215	7,763
2017	1,135	431	279	4,946	79	147	963	168	8,148
% Change	13.4%	1.2%	-9.1%	6.1%	3.9%	0.0%	3.8%	-21.9%	5.0%
<b>Staten Island</b>									
2016	252	123	81	1,609	9	42	461	39	2,616
2017	244	148	111	1,453	11	35	326	58	2,386
% Change	-3.2%	20.3%	37.0%	-9.7%	22.2%	-16.7%	-29.3%	48.7%	-8.8%
<b>OSI</b>									
2016	367	51	72	1,347	9	75	168	9	2,098
2017	292	33	52	1,252	13	77	171	1	1,891
% Change	-20.4%	-35.3%	-27.8%	-7.1%	44.4%	2.7%	1.8%	-88.9%	-9.9%
<b>Other</b>									
2016	106	48	53	616	10	25	141	84	1,083
2017	100	52	59	595	12	31	131	99	1,079
% Change	-5.7%	8.3%	11.3%	-3.4%	20.0%	24.0%	-7.1%	17.9%	-0.4%
<b>Citywide</b>									
2016	5,043	3,023	1,807	26,303	293	842	5,483	640	43,434
2017	5,221	2,835	1,753	26,165	300	895	5,354	560	43,083
% Change	3.5%	-6.2%	-3.0%	-0.5%	2.4%	6.3%	-2.4%	-12.5%	-0.8%



**TABLE 4 - Child Welfare Preventive Cases  
New and Closed  
January 2014 to November 2017**

Month	New Cases	Closed Cases
<b>2014</b>		
Jan-14	841	686
Feb-14	885	726
Mar-14	998	930
Apr-14	919	941
May-14	919	982
Jun-14	890	826
Jul-14	973	1,168
Aug-14	826	1,102
Sep-14	841	771
Oct-14	835	917
Nov-14	677	788
Dec-14	1,062	821
<b>2015</b>		
Jan-15	728	792
Feb-15	902	751
Mar-15	1,122	831
Apr-15	977	932
May-15	914	999
Jun-15	1,068	930
Jul-15	899	1,217
Aug-15	893	1,064
Sep-15	764	964
Oct-15	749	889
Nov-15	746	807
Dec-15	1,013	881
<b>2016</b>		
Jan-16	792	770
Feb-16	897	795
Mar-16	1,029	978
Apr-16	836	892
May-16	890	966
Jun-16	996	935
Jul-16	842	1,069
Aug-16	897	1,006
Sep-16	821	850
Oct-16	776	627
Nov-16	728	490
Dec-16	816	462
<b>2017</b>		
Jan-17	548	449
Feb-17	602	920
Mar-17	864	1,032
Apr-17	645	780
May-17	790	925
Jun-17	908	944
Jul-17	765	852
Aug-17	875	864
Sep-17	841	747
Oct-17	870	762
Nov-17	765	740

**Table 5 - Referrals to Child Welfare Preventive Services by Source  
January 2014 to November 2017**

Month	Total Referrals	Division of Child Protection	Foster Care Agencies	PPRS Transfer	School	Self	Other Sources*
<b>2014</b>							
Jan-14	1,537	70.0%	1.2%	6.6%	2.3%	5.8%	14.2%
Feb-14	1,334	69.7%	0.8%	8.4%	1.7%	5.5%	13.9%
Mar-14	1,612	70.0%	1.4%	8.6%	1.6%	5.3%	13.1%
Apr-14	1,525	70.2%	0.9%	7.6%	2.1%	3.7%	15.4%
May-14	1,580	74.4%	0.7%	8.3%	1.4%	5.2%	10.0%
Jun-14	1,550	78.6%	1.2%	6.3%	1.2%	3.2%	9.4%
Jul-14	1,659	79.6%	1.5%	6.7%	0.4%	4.2%	7.6%
Aug-14	1,395	72.2%	1.6%	10.8%	0.3%	4.9%	10.3%
Sep-14	1,597	49.4%	1.5%	7.6%	0.3%	4.5%	36.8%
Oct-14	1,634	68.2%	1.9%	10.0%	1.2%	4.6%	14.1%
Nov-14	1,311	66.4%	0.9%	14.3%	2.4%	3.9%	12.1%
Dec-14	1,785	71.1%	1.4%	8.8%	2.9%	4.8%	11.0%
CY 2014	18,519	70.1%	1.3%	8.6%	1.5%	4.6%	14.0%
<b>2015</b>							
Jan-15	1,430	74.4%	1.6%	8.7%	1.8%	3.8%	9.7%
Feb-15	1,538	76.5%	0.8%	8.1%	1.8%	4.7%	8.2%
Mar-15	1,798	74.6%	0.9%	7.3%	1.6%	4.8%	10.8%
Apr-15	1,719	78.2%	1.3%	7.2%	0.6%	3.5%	9.1%
May-15	1,561	77.2%	1.0%	5.1%	1.5%	4.5%	10.8%
Jun-15	1,716	77.4%	1.1%	7.7%	1.2%	3.5%	9.1%
Jul-15	1,511	79.6%	0.9%	7.2%	0.3%	3.8%	8.2%
Aug-15	1,418	79.3%	2.2%	7.8%	0.2%	3.1%	7.5%
Sep-15	1,209	72.1%	2.8%	10.4%	0.5%	5.5%	8.6%
Oct-15	1,338	70.4%	1.9%	8.3%	2.1%	5.8%	11.6%
Nov-15	1,220	68.2%	1.8%	9.6%	1.4%	6.2%	12.8%
Dec-15	1,526	73.5%	1.6%	8.0%	2.0%	5.0%	9.9%
<b>2016</b>							
Jan-16	1,370	73.6%	1.6%	8.2%	0.7%	5.4%	10.6%
Feb-16	1,436	75.8%	2.2%	7.8%	1.0%	3.8%	9.3%
Mar-16	1,557	72.0%	2.1%	8.8%	1.0%	4.6%	11.4%
Apr-16	1,378	76.1%	1.5%	7.4%	1.5%	3.5%	10.0%
May-16	1,386	73.4%	1.4%	8.7%	1.0%	4.7%	10.8%
Jun-16	1,564	77.2%	2.4%	6.2%	1.5%	4.1%	8.6%
Jul-16	1,338	80.3%	1.7%	6.4%	1.0%	4.2%	6.4%
Aug-16	1,385	79.1%	1.8%	7.1%	0.4%	4.0%	7.6%
Sep-16	1,297	77.8%	2.1%	7.5%	0.8%	4.5%	7.4%
Oct-16	1,247	70.1%	2.0%	7.6%	1.5%	5.9%	12.9%
Nov-16	1,229	67.8%	2.0%	7.8%	1.2%	5.5%	15.8%
Dec-16	1,175	76.0%	1.5%	7.1%	1.3%	3.8%	10.3%
<b>2017</b>							
Jan-17	1,046	78.5%	1.4%	6.7%	0.7%	3.1%	9.7%
Feb-17	1,067	77.7%	0.8%	6.7%	0.8%	3.8%	10.1%
Mar-17	1,383	79.1%	0.6%	6.9%	0.9%	4.0%	8.5%
Apr-17	1,116	81.2%	1.0%	5.9%	1.1%	1.4%	9.4%
May-17	1,335	81.9%	0.9%	5.5%	1.3%	2.8%	7.6%
Jun-17	1,449	82.3%	0.8%	5.9%	1.2%	2.9%	6.9%
Jul-17	1,273	83.3%	0.9%	7.9%	0.7%	1.9%	5.3%
Aug-17	1,429	82.7%	0.6%	9.3%	0.3%	1.7%	5.2%
Sep-17	1,383	79.6%	1.6%	7.7%	0.8%	2.8%	7.4%
Oct-17	1,490	77.6%	1.5%	7.5%	1.0%	3.1%	9.3%
Nov-17	1,239	76.4%	1.1%	9.0%	1.8%	3.4%	8.4%

\*Other Community Sources includes the Department of Homeless Services, Family Court, FAP, Hospitals and Medical facilities, the NYC Housing Authority, Probation, and Sponsor Agencies.