

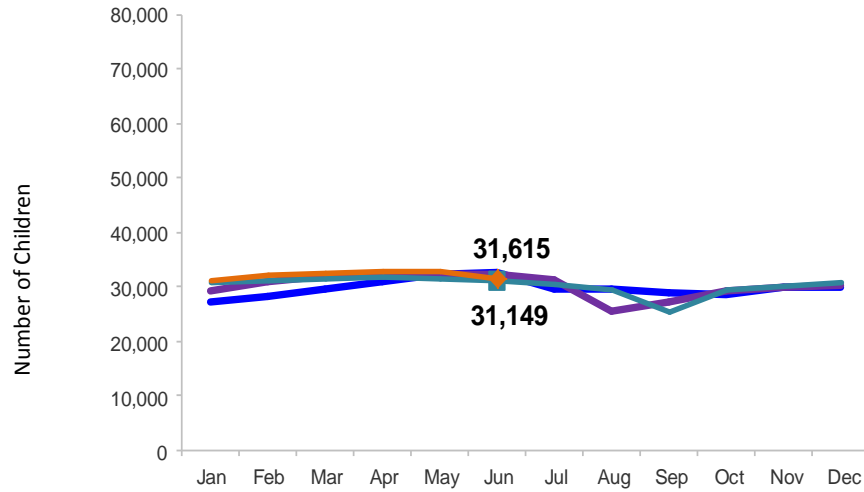


Flash

July 2016

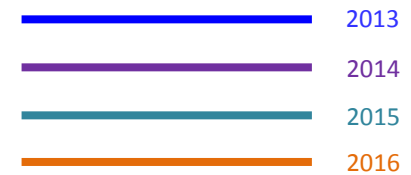
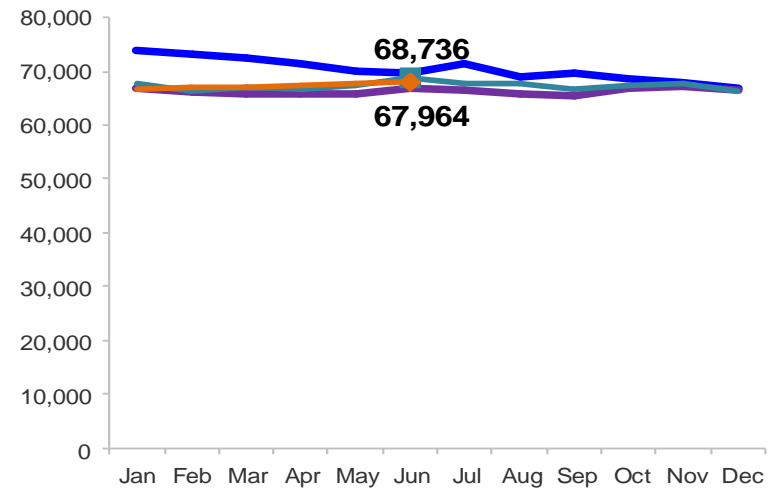
Children Enrolled in Contracted EarlyLearn Programs

January 2013 – June 2016 (End of Month)



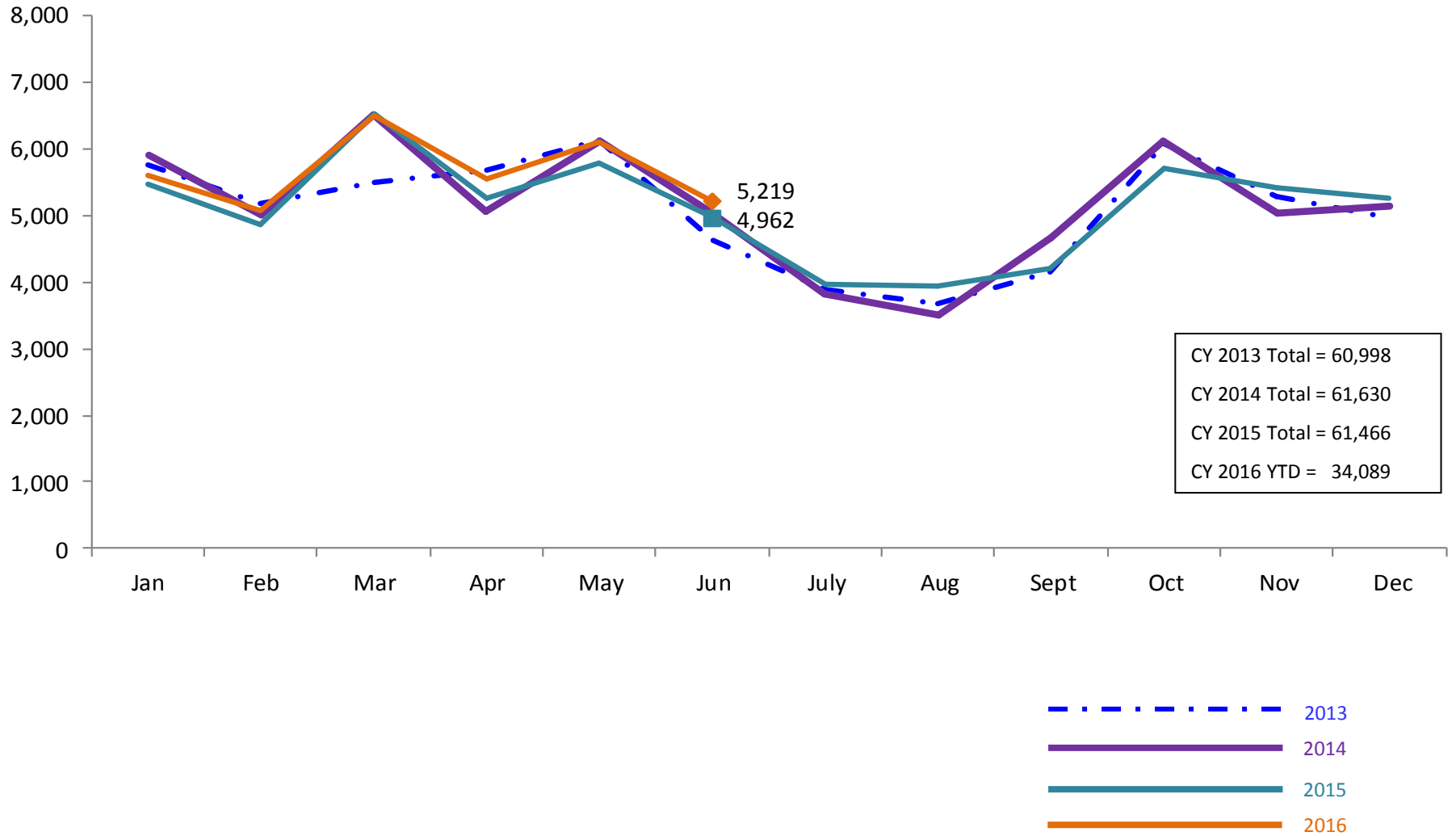
Children Using Vouchers for Child Care

January 2013 – June 2016 (End of Month)



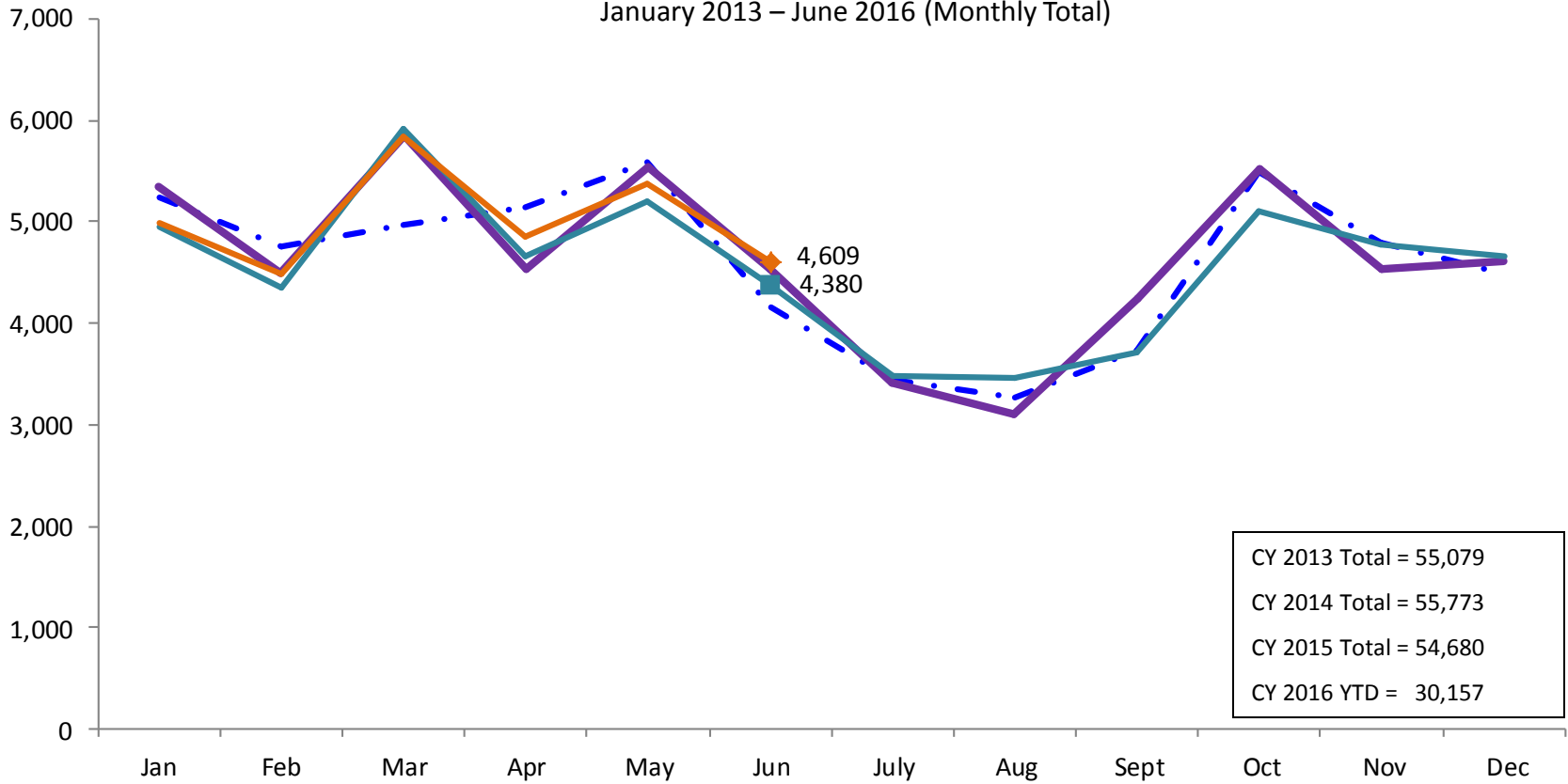
SCR Intakes

January 2013 – June 2016 (Monthly Total)

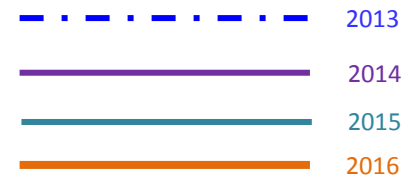


SCR Consolidated Investigations

January 2013 – June 2016 (Monthly Total)

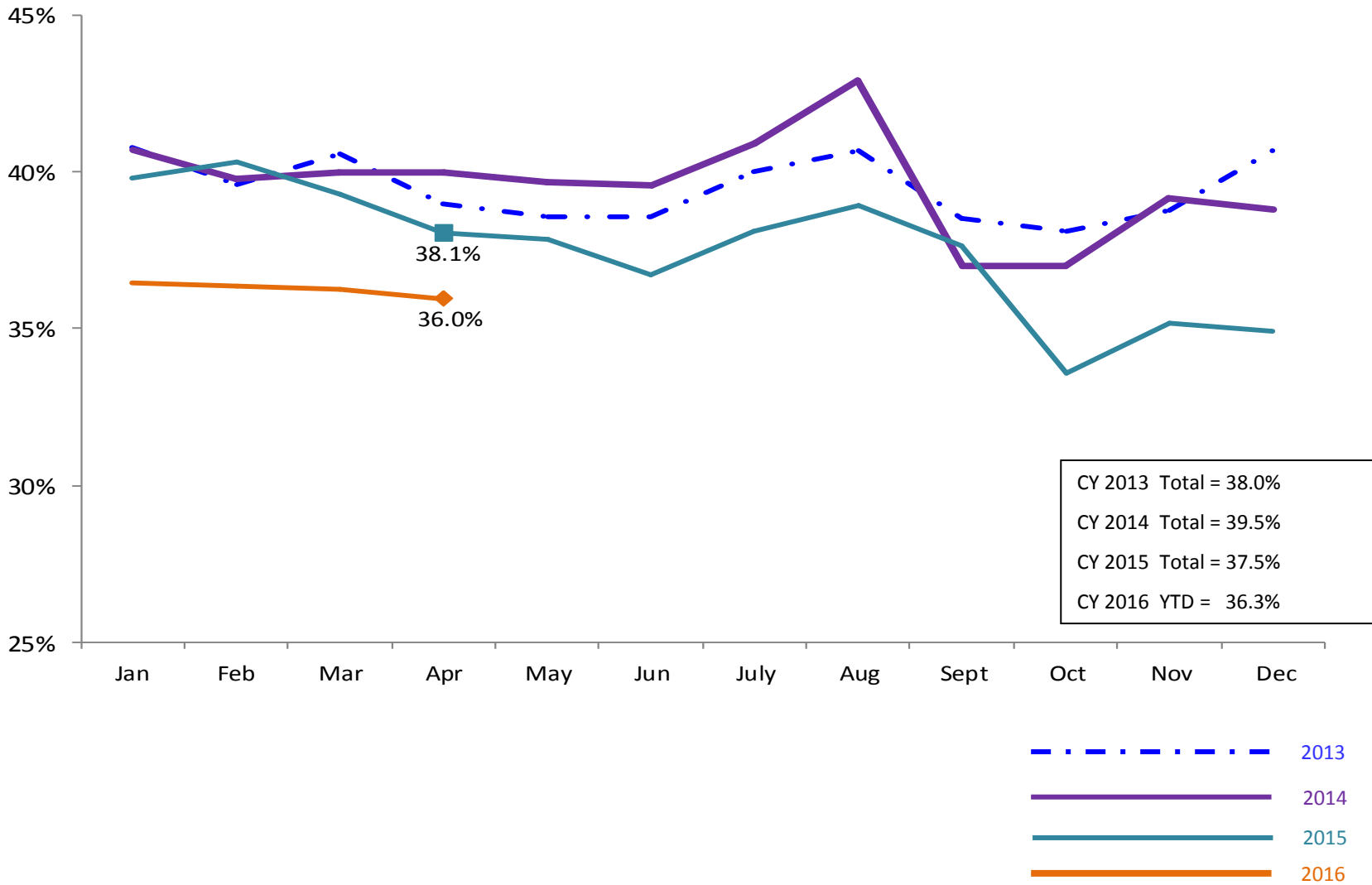


CY 2013 Total = 55,079
 CY 2014 Total = 55,773
 CY 2015 Total = 54,680
 CY 2016 YTD = 30,157



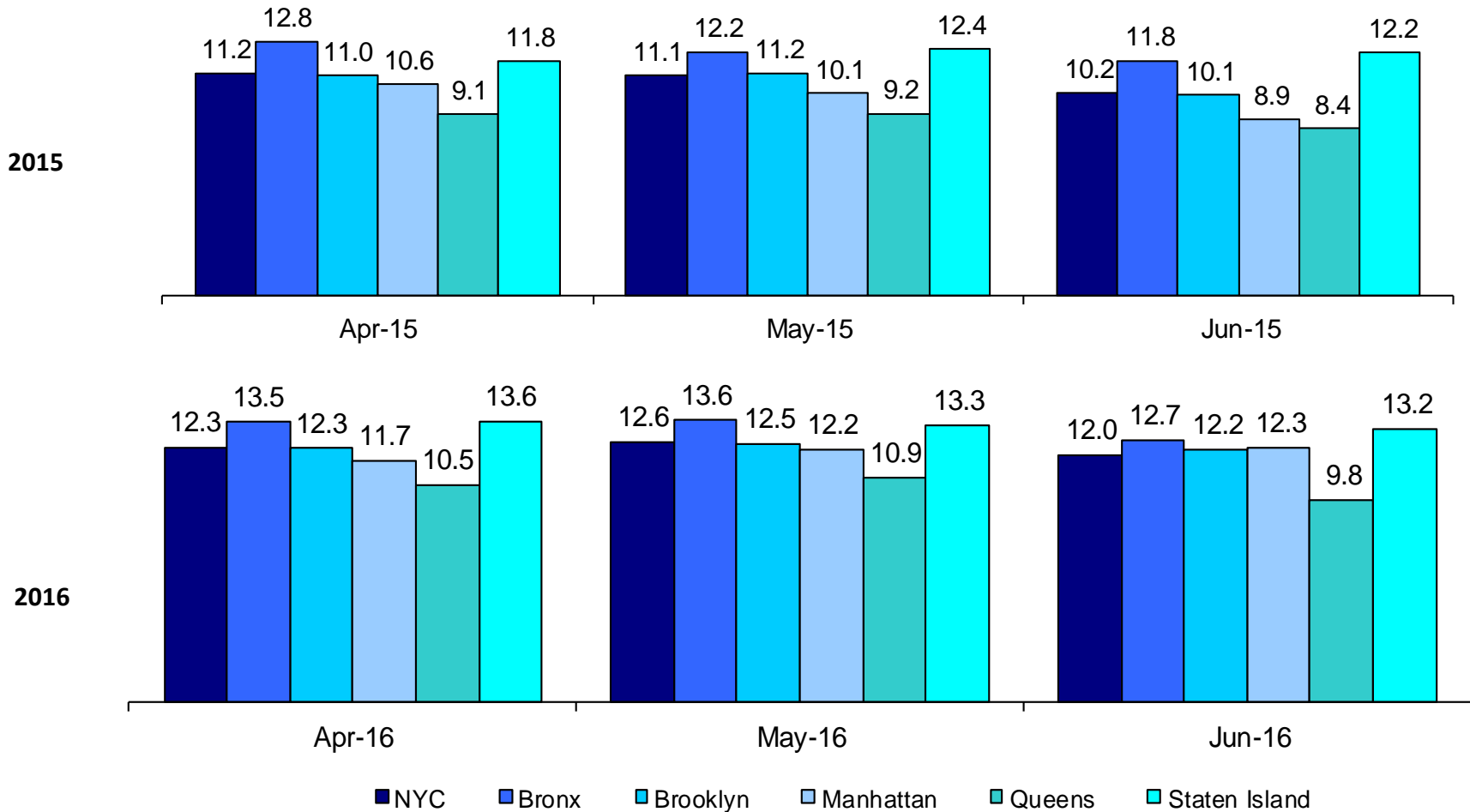
SCR Investigation Indication Rate

January 2012 – April 2016



Average P/D Combined Caseload*

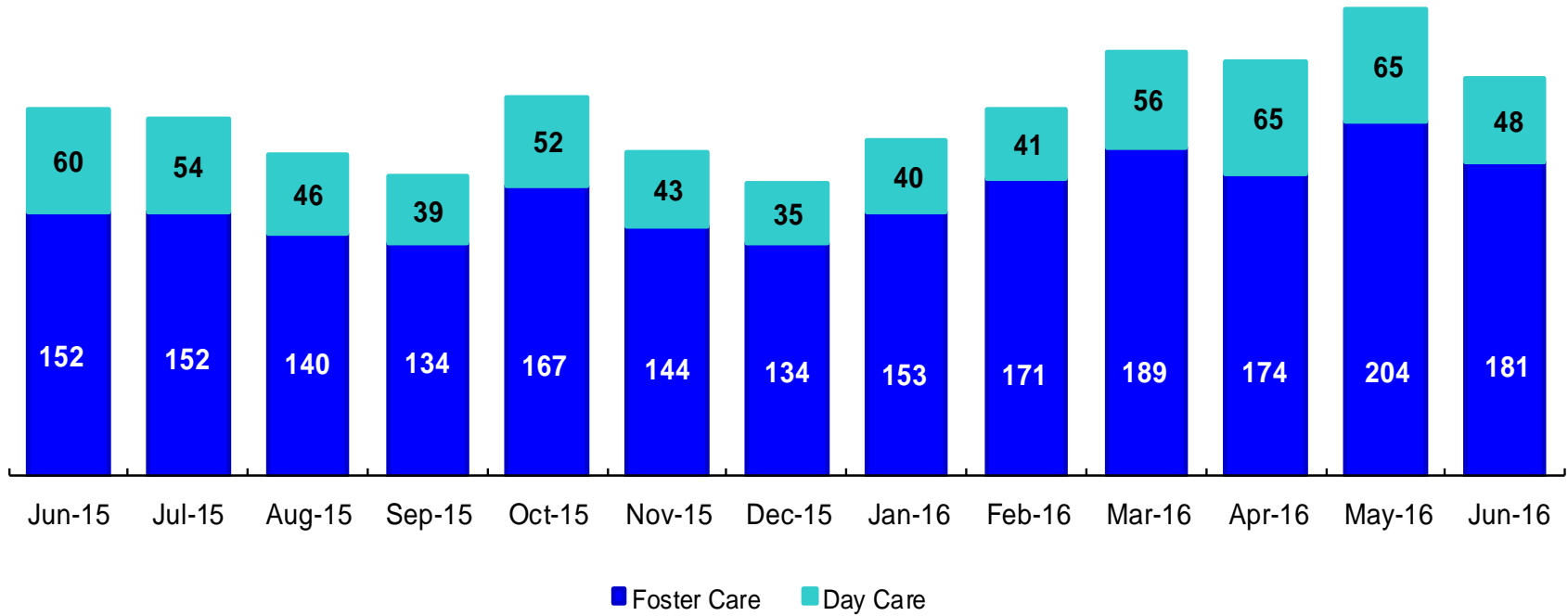
April 2015 – June 2015 & April 2016 – June 2016



* Caseloads are of protective/diagnostic caseworkers only and exclude the caseloads carried by Level I and Level II Supervisors.

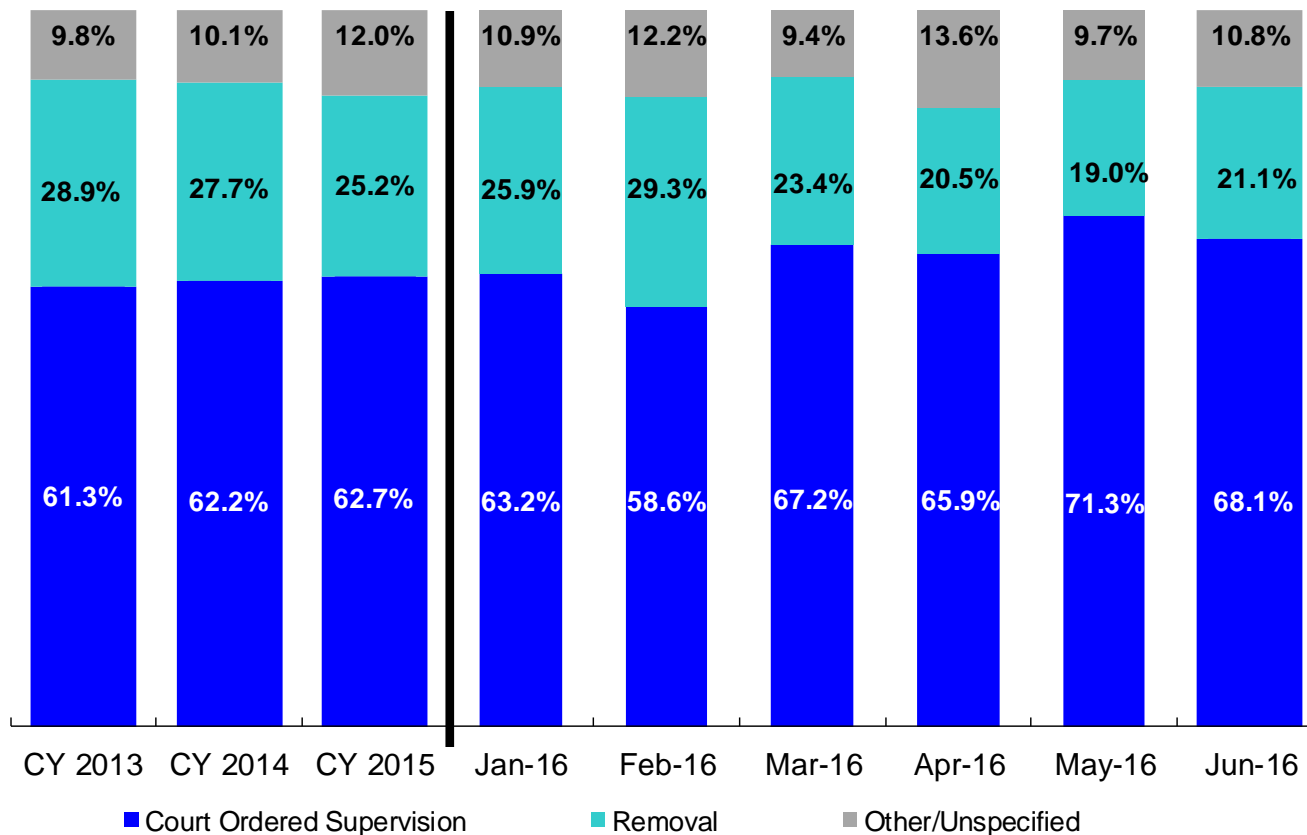
OSI Investigations by Program

June 2015 – June 2016



	Jun 2015	Jul 2015	Aug 2015	Sep 2015	Oct 2015	Nov 2015	Dec 2015	Jan 2016	Feb 2016	Mar 2016	Apr 2016	May 2016	Jun 2016
Number of Investigations	212	206	186	173	219	187	169	193	212	245	239	269	229

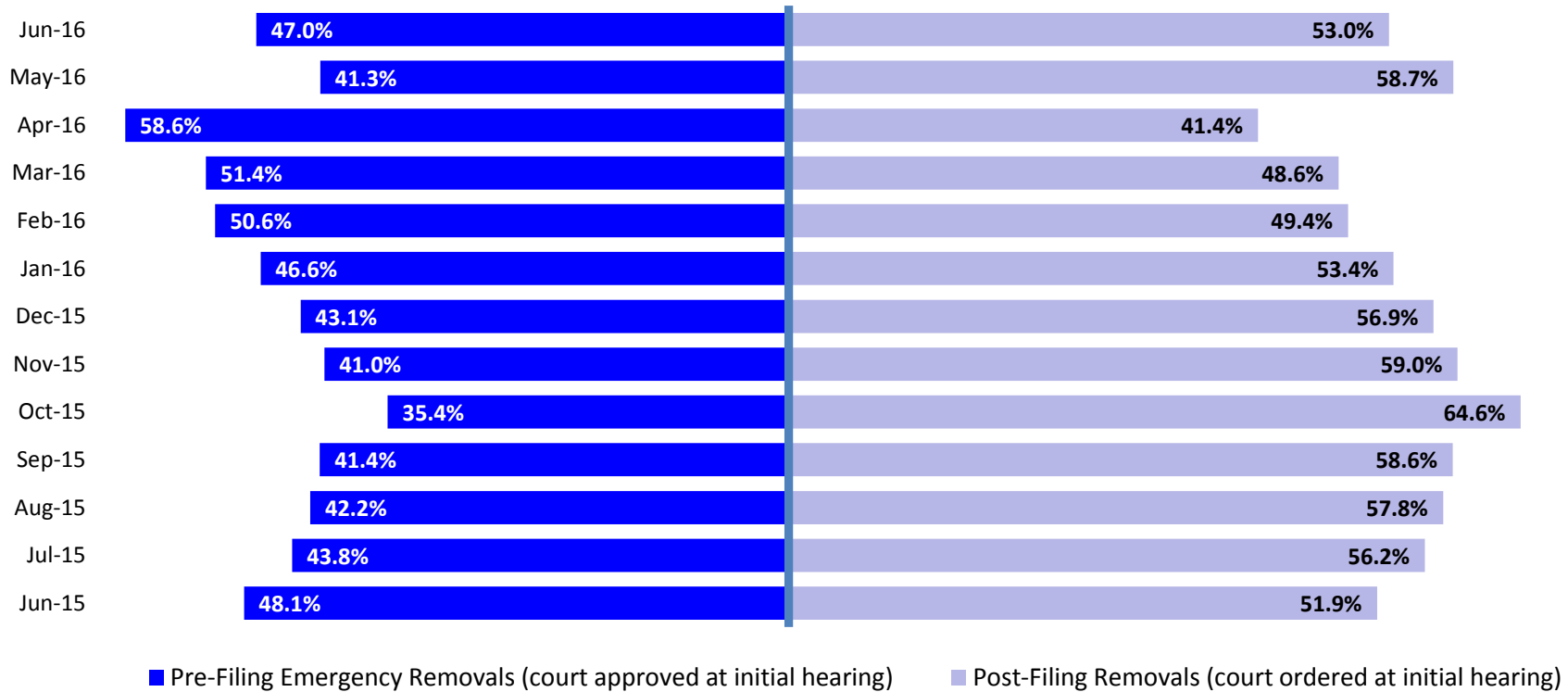
Article 10 Total Filings & Filing Outcomes, CY 2013 – June 2016



	CY 2013	CY 2014	CY 2015	Jan 2016	Feb 2016	Mar 2016	Apr 2016	May 2016	Jun 2016
Article 10 Filings	9,318	9,900	10,257	737	830	890	883	790	868

Note: The category “Other/Unspecified” includes released with no supervision, no order issued and no outcome specified. Outcomes of cases heard the next day are not captured in this report

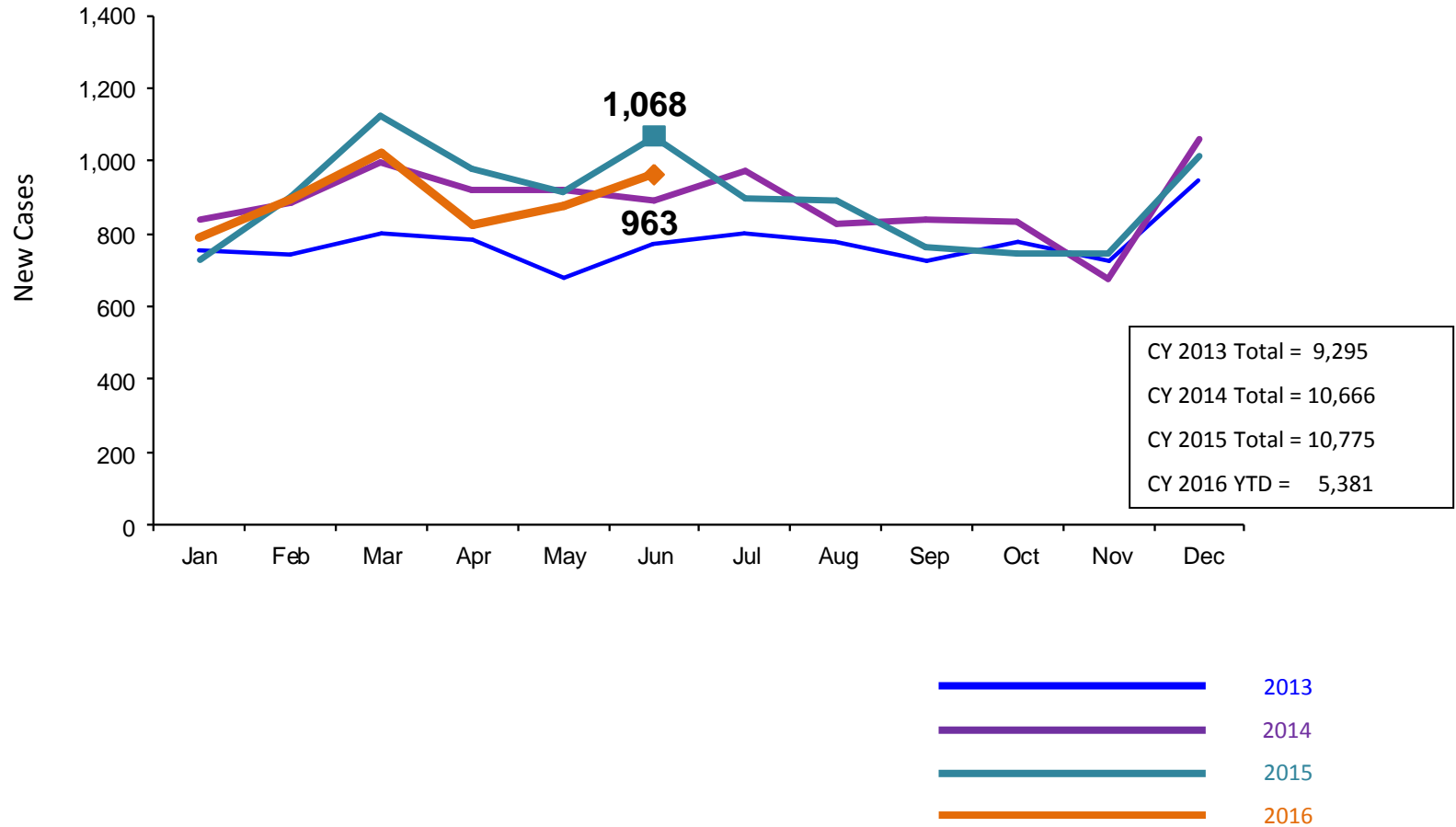
Article 10 Filing Removals, June 2015 – June 2016



	Jun 2015	July 2015	Aug 2015	Sep 2015	Oct 2015	Nov 2015	Dec 2015	Jan 2016	Feb 2016	Mar 2016	Apr 2016	May 2016	June 2016
Number of Removals	206	235	180	174	178	166	195	191	243	208	181	150	183

New Child Welfare Preventive Cases*

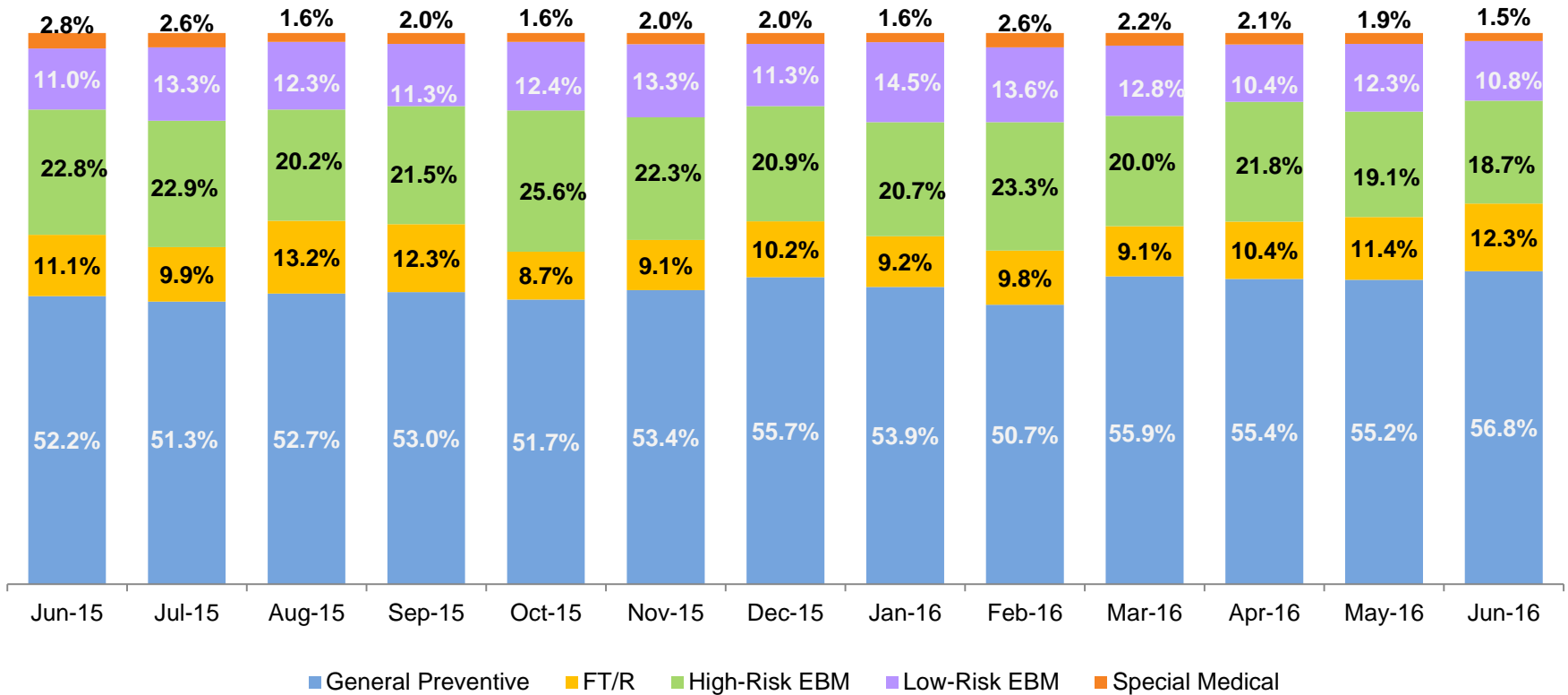
January 2013 – June 2016



*Notes: 1) New preventive cases do not include cases transferred from one preventive program to another. 2) See Pages 33 and 34 of the Appendix for supporting data.

New Child Welfare Preventive Cases by Program Type *

June 2015 – June 2016

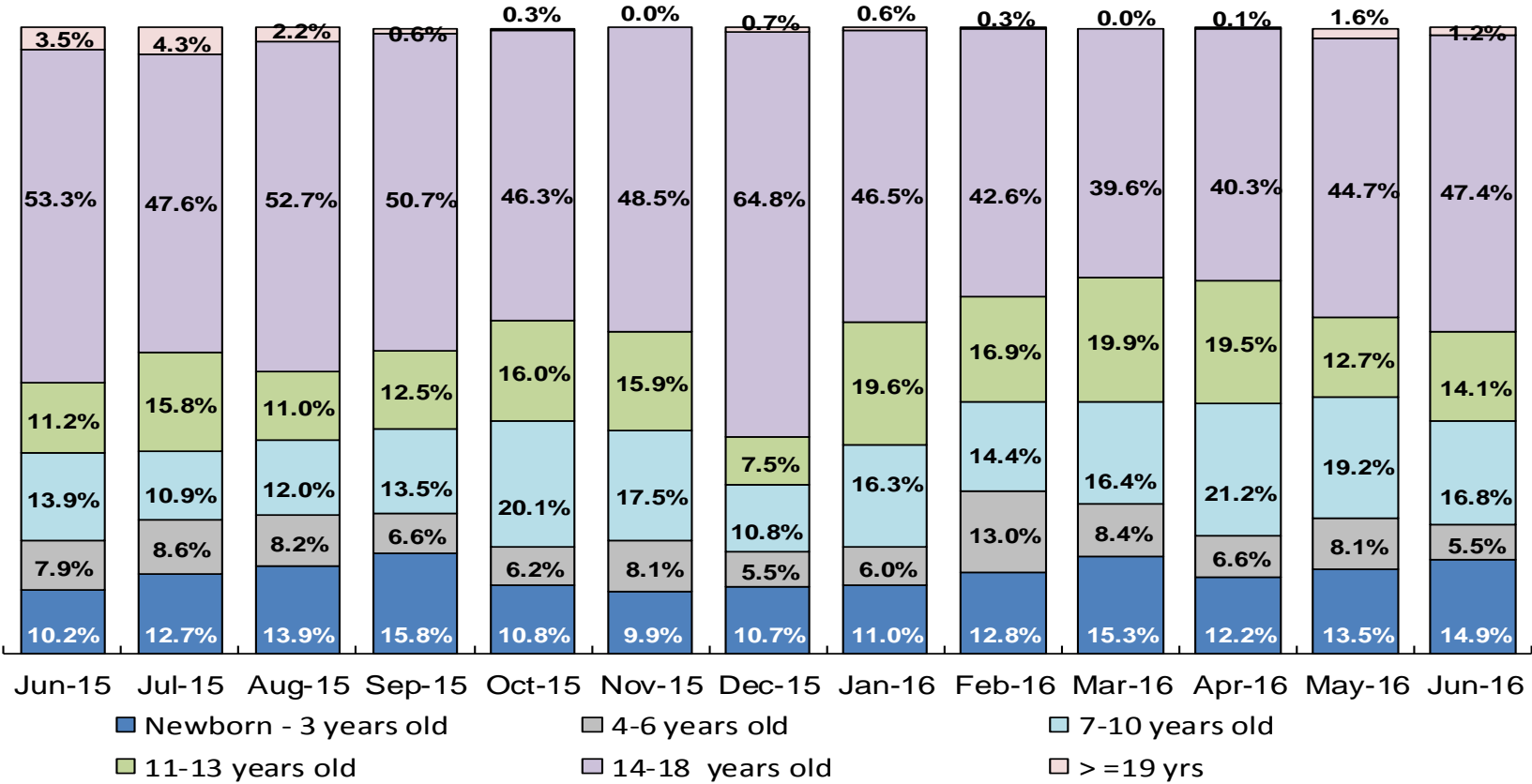


	Jun 2015	Jul 2015	Aug 2015	Sep 2015	Oct 2015	Nov 2015	Dec 2015	Jan 2016	Feb 2016	Mar 2016	Apr 2016	May 2016	June 2016
Number of New Preventive Cases	1,068	899	893	764	749	746	1,013	792	897	1,024	827	878	963

* New preventive cases exclude cases transferred from one preventive program to another.

Average Pre-Placement Residential Monthly Population

June 2015 – June 2016

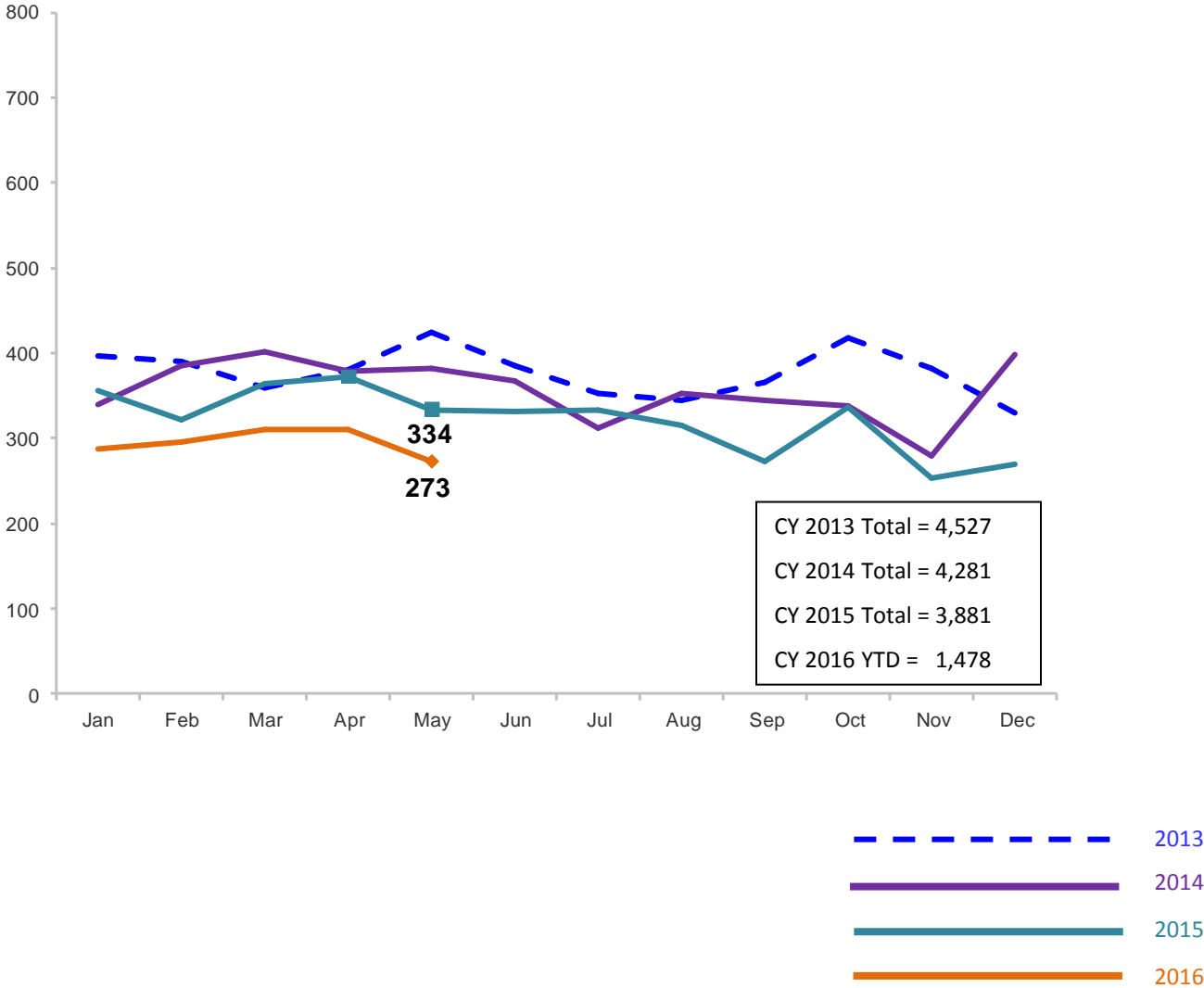


	Jun 2015	July 2015	Aug 2015	Sep 2015	Oct 2015	Nov 2015	Dec 2015	Jan 2016	Feb 2016	Mar 2016	Apr 2016	May 2016	May 2016
Average Number of Children	50	42	40	36	45	40	40	46	45	49	53	34	40

*Beginning in December 2014 the pre-placement residential population includes children at the Children’s Center and at the MercyFirst Reception Center.

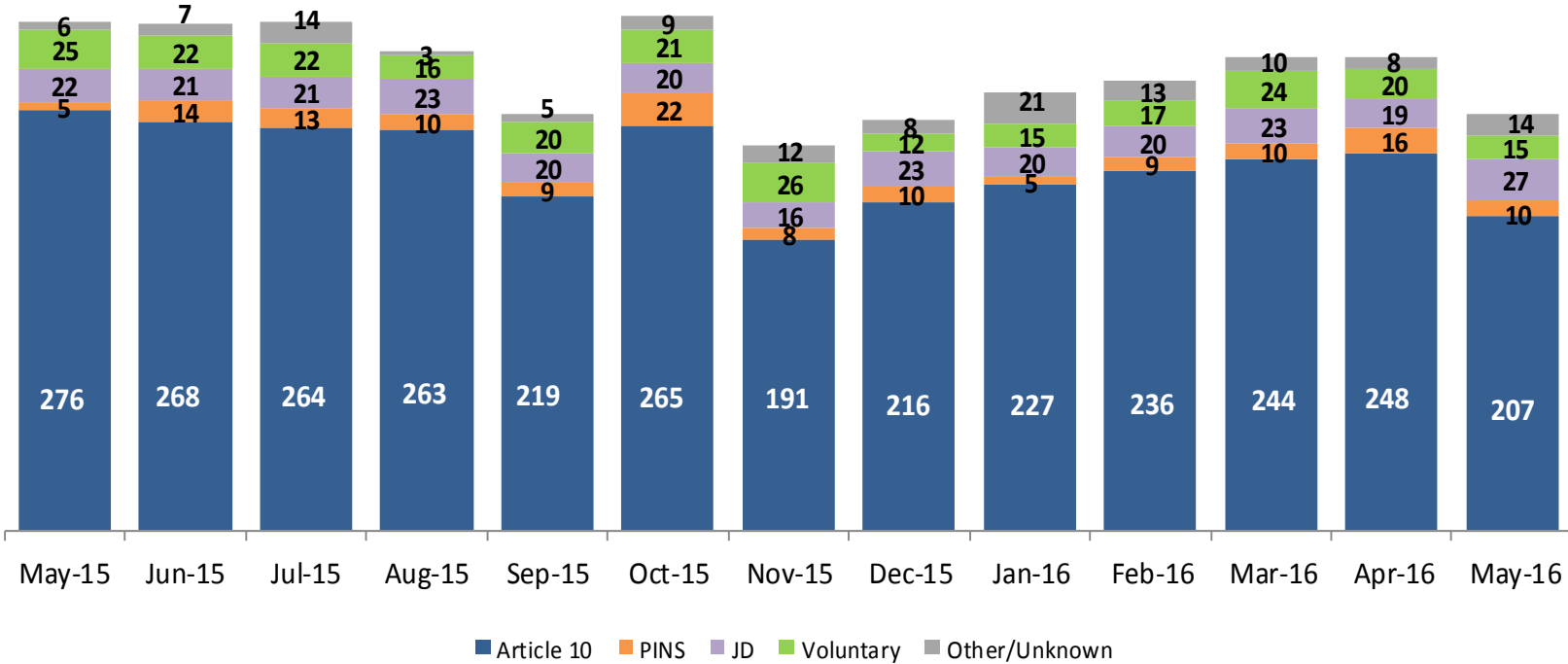
Total Monthly Placements

January 2013 – May 2016



Reason for Initial Placements into Foster Care

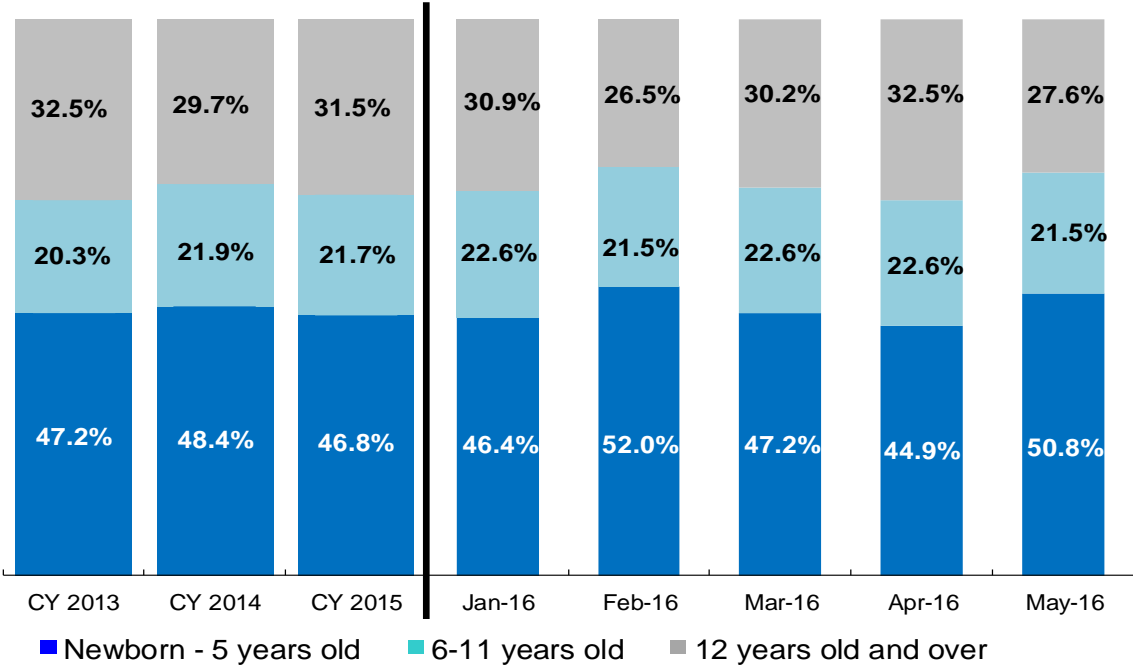
May 2015 – May 2016



	May 2015	Jun 2015	Jul 2015	Aug 2015	Sep 2015	Oct 2015	Nov 2015	Dec 2015	Jan 2016	Feb 2016	Mar 2016	Apr 2016	May 2016
Number of Placements	334	332	334	315	273	337	253	269	288	295	311	311	273

Placements* by Age

CY 2013 - May 2016

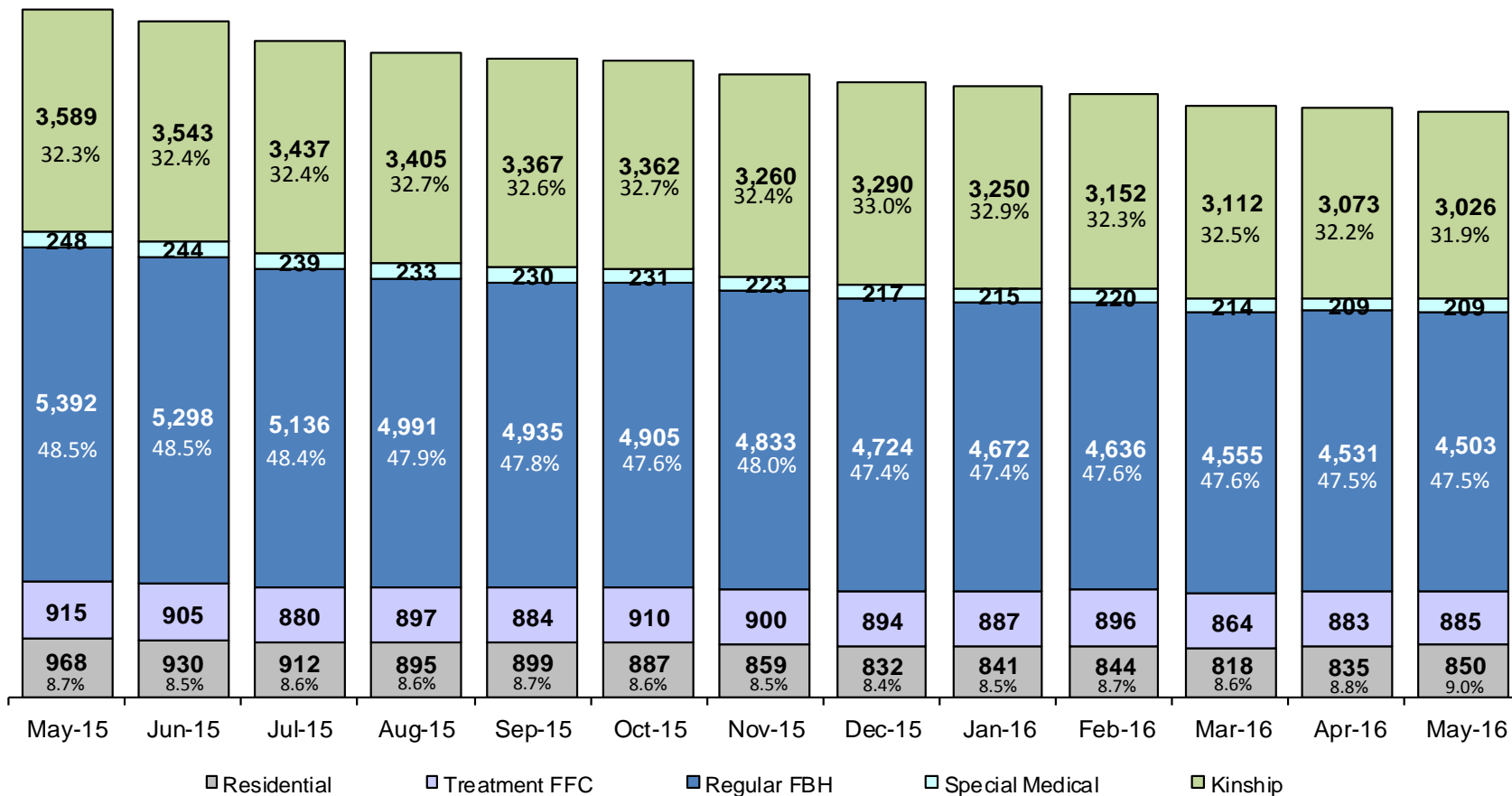


	CY 2013	CY 2014	CY 2015	Jan 2016	Feb 2016	Mar 2016	Apr 2016	May 2016
Placements (without JDs)	4,170	3,983	3,632	268	275	288	292	246

*Excludes JD placements.

Children in Foster Care *

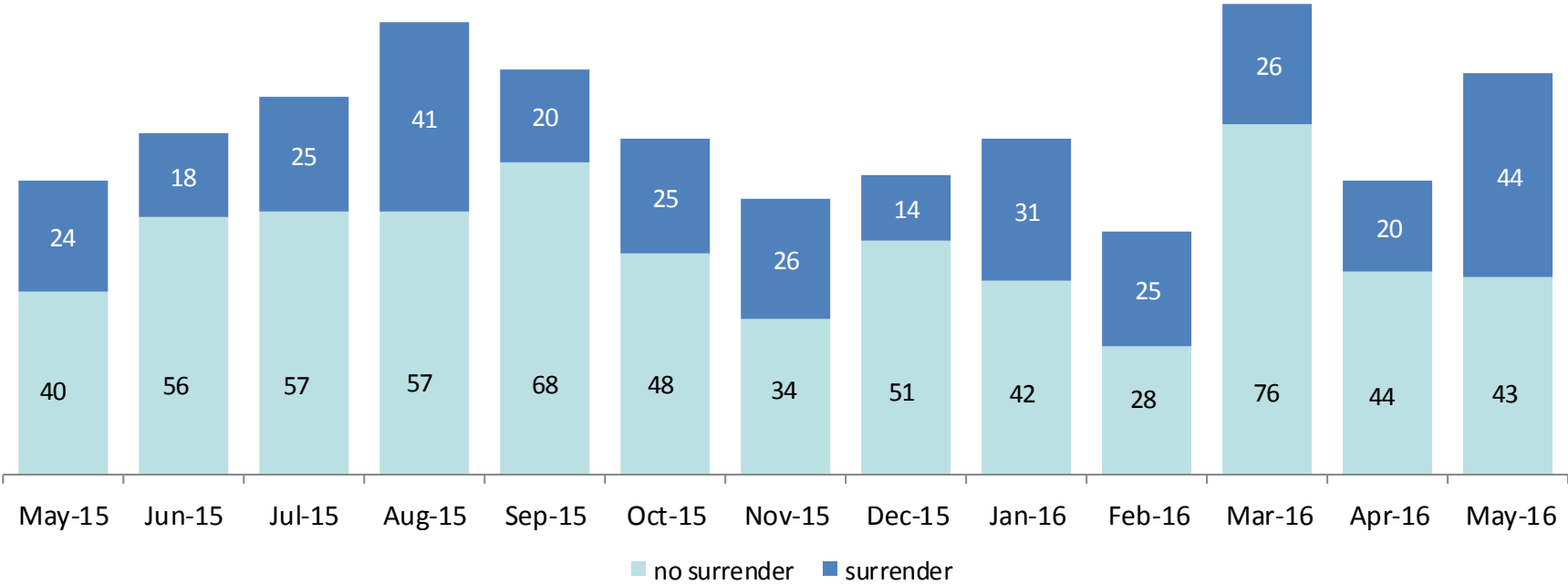
May 2015 – May 2016 (end of month)



	May 2015	Jun 2015	Jul 2015	Aug 2015	Sep 2015	Oct 2015	Nov 2015	Dec 2015	Jan 2016	Feb 2016	Mar 2016	Apr 2016	May 2016
Number in Foster Care	11,112	10,920	10,604	10,421	10,315	10,295	10,075	9,957	9,865	9,748	9,563	9,531	9,473

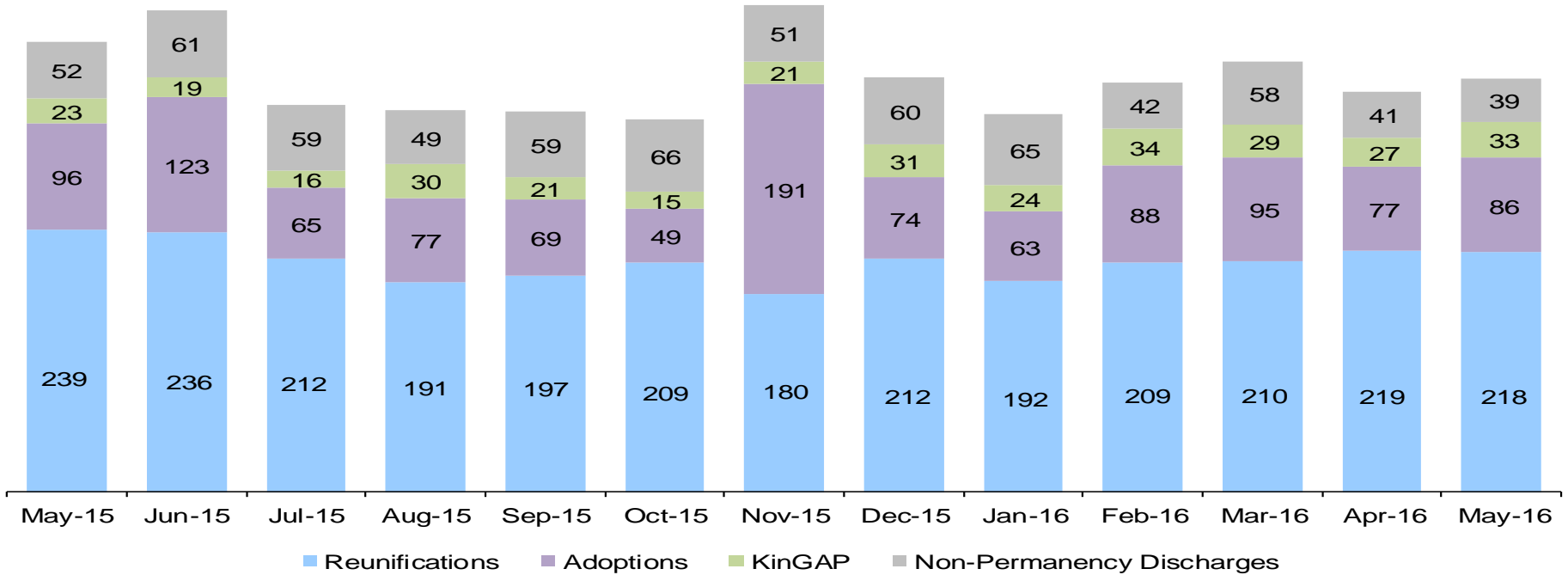
*Excludes JD placements and includes children in 24 hour care and approximately 200 young children who are living in foster homes or residential care facilities with their mothers who are in foster care (8D children).

Children Freed for Adoption, Surrender by at Least One Parent May 2015 – May 2016



	May 2015	Jun 2015	Jul 2015	Aug 2015	Sep 2015	Oct 2015	Nov 2015	Dec 2015	Jan 2016	Feb 2016	Mar 2016	Apr 2016	May 2016
Number Freed for Adoption	93	64	74	82	98	87	73	63	73	53	102	64	87

Permanency and Non-Permanency* Discharges from Foster Care** May 2015 – May 2016



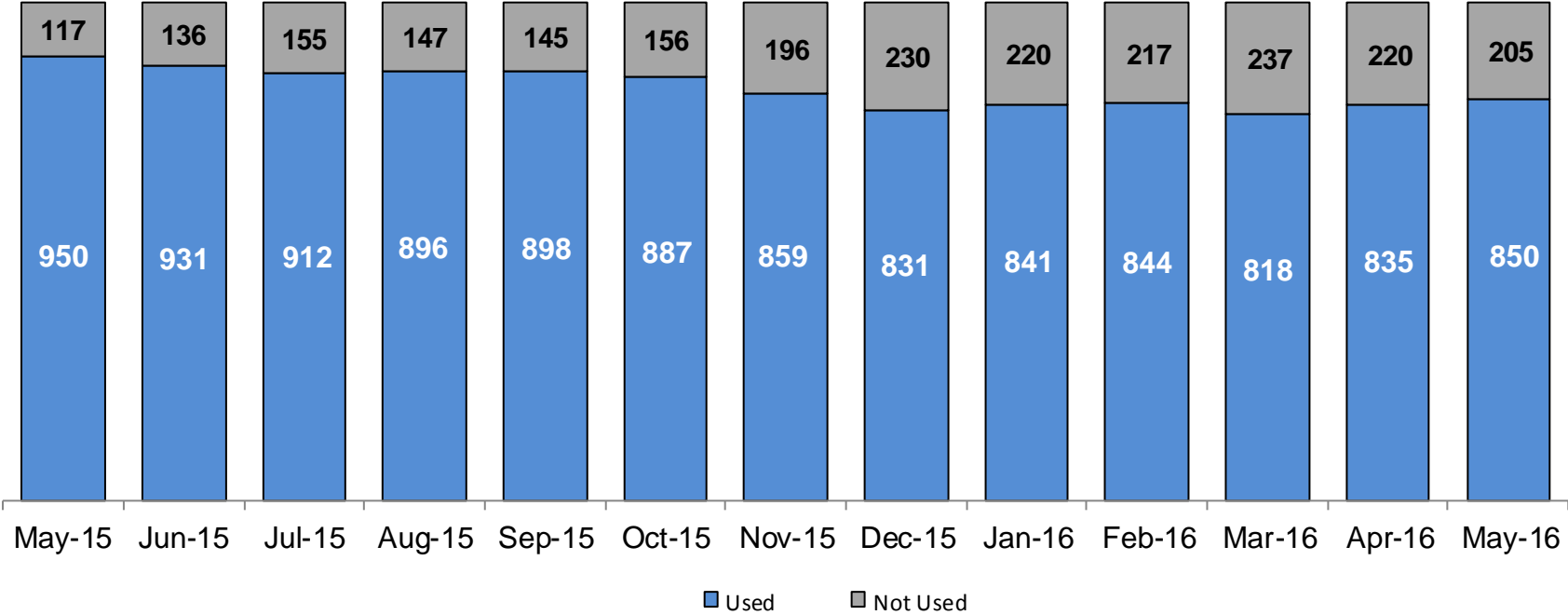
	May 2015	Jun 2015	Jul 2015	Aug 2015	Sep 2015	Oct 2015	Nov 2015	Dec 2015	Jan 2016	Feb 2016	Mar 2016	Apr 2016	May 2016
Number of Discharges	410	439	352	347	346	339	443	377	344	373	392	364	376

*Non-permanency discharges include AWOL, APPLA , other discharge destinations such as psychiatric institutions and correctional facilities and discharges with unspecified destinations.

**Excludes discharges of youth who entered care as a JD.

Residential Care Capacity and Utilization

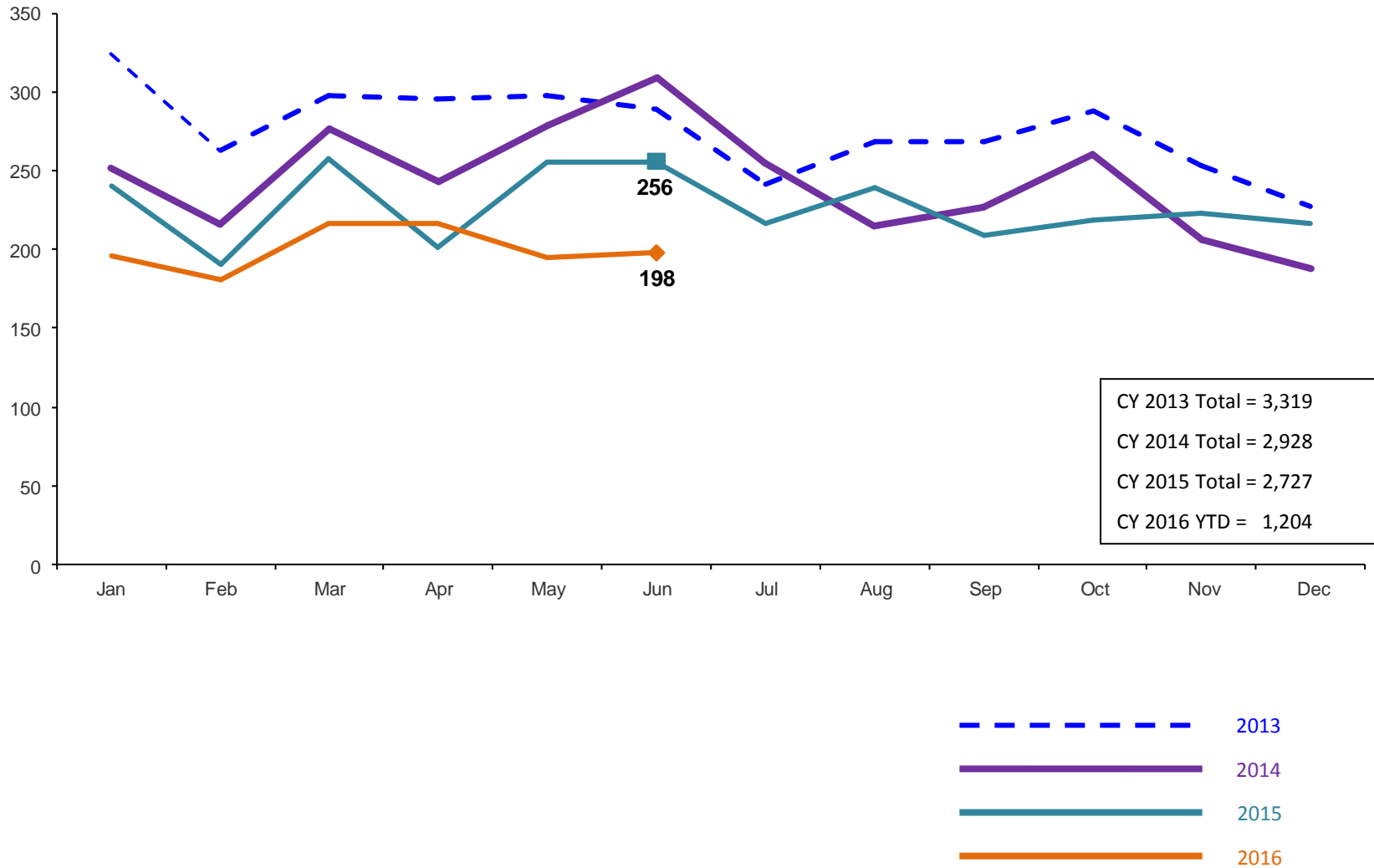
May 2015 – May 2016



	May 2015	Jun 2015	Jul 2015	Aug 2015	Sep 2015	Oct 2015	Nov 2015	Dec 2015	Jan 2016	Feb 2016	Mar 2016	Apr 2016	May 2016
Capacity	1,067	1,067	1,067	1,043	1,043	1,043	1,055	1,061	1,061	1,061	1,055	1,055	1,055

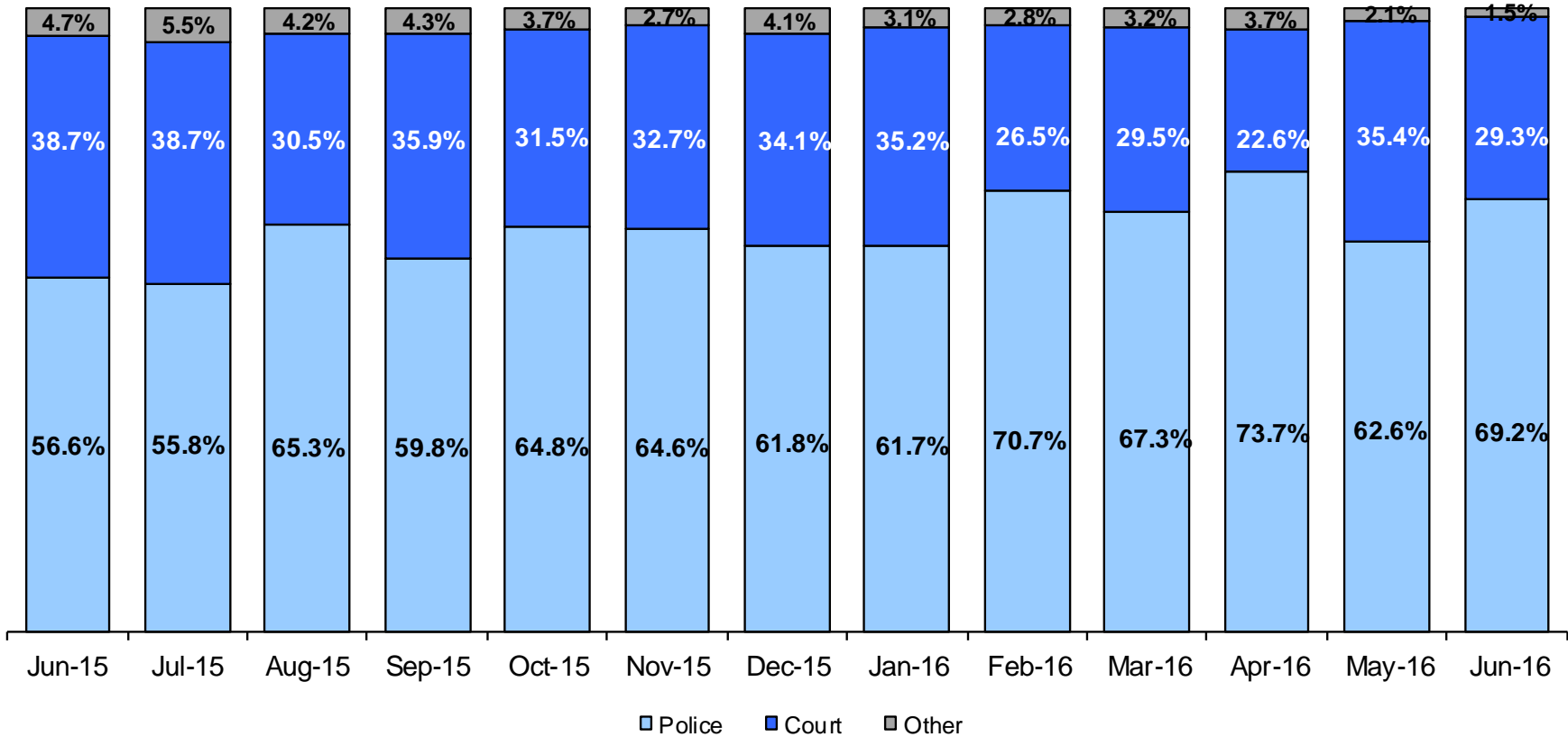
Total Monthly Admissions to Detention

January 2013 – June 2016 (Monthly Total)



Admit Authority on Admissions

June 2015 – June 2016 (Monthly Total)



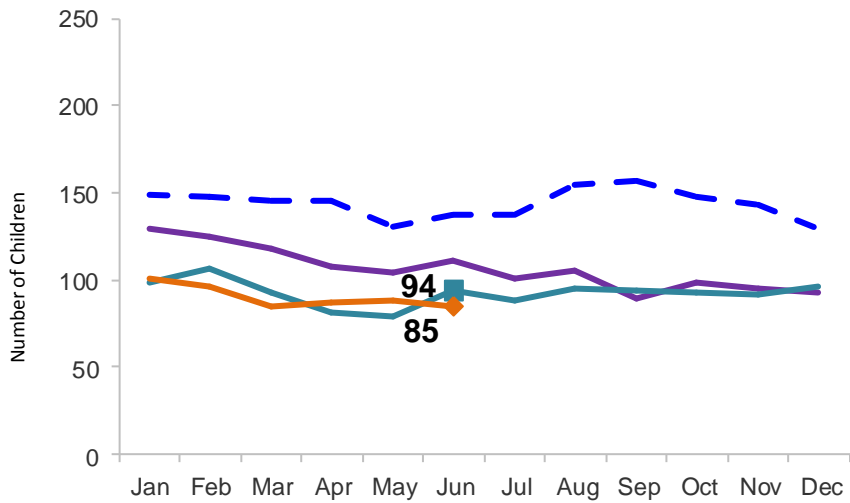
	Jun 2015	July 2015	Aug 2015	Sep 2015	Oct 2015	Nov 2015	Dec 2015	Jan 2016	Feb 2016	Mar 2016	Apr 2016	May 2016	Jun 2016
Number of Admissions	256	217	239	209	219	223	217	196	181	217	217	195	198

Note: Other Admit Authority includes the Sheriff Department, Department of Corrections and ACS.

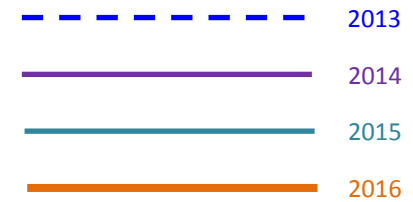
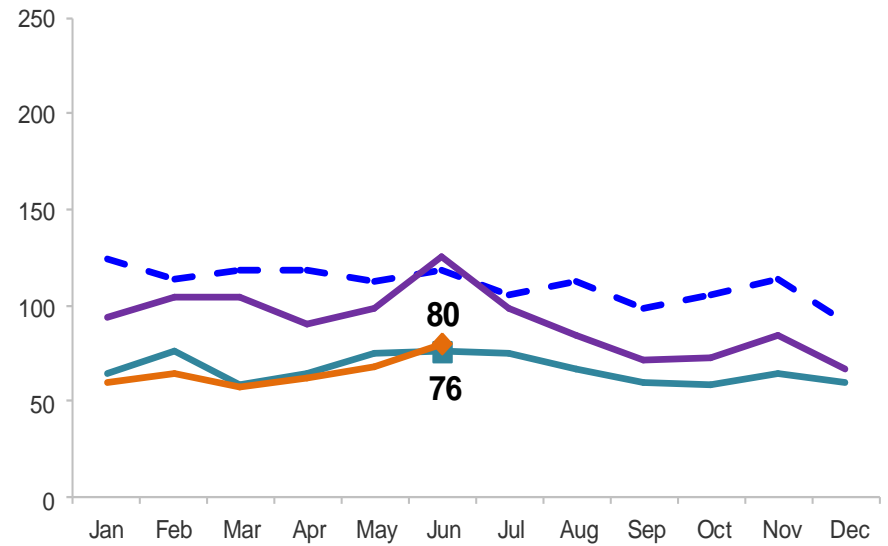
Monthly Average Daily Population

January 2013 – June 2016

Secure Detention

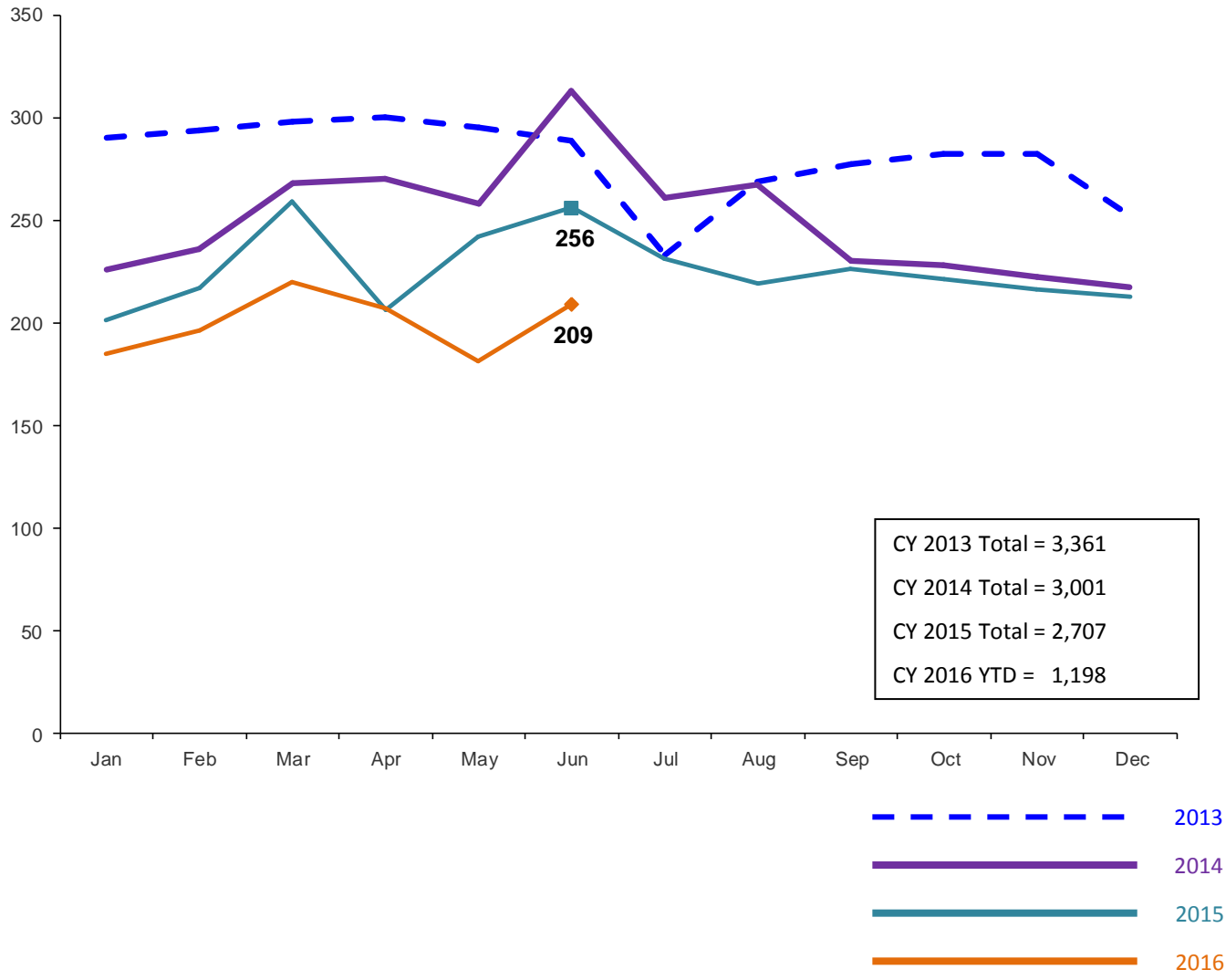


Non-Secure Detention



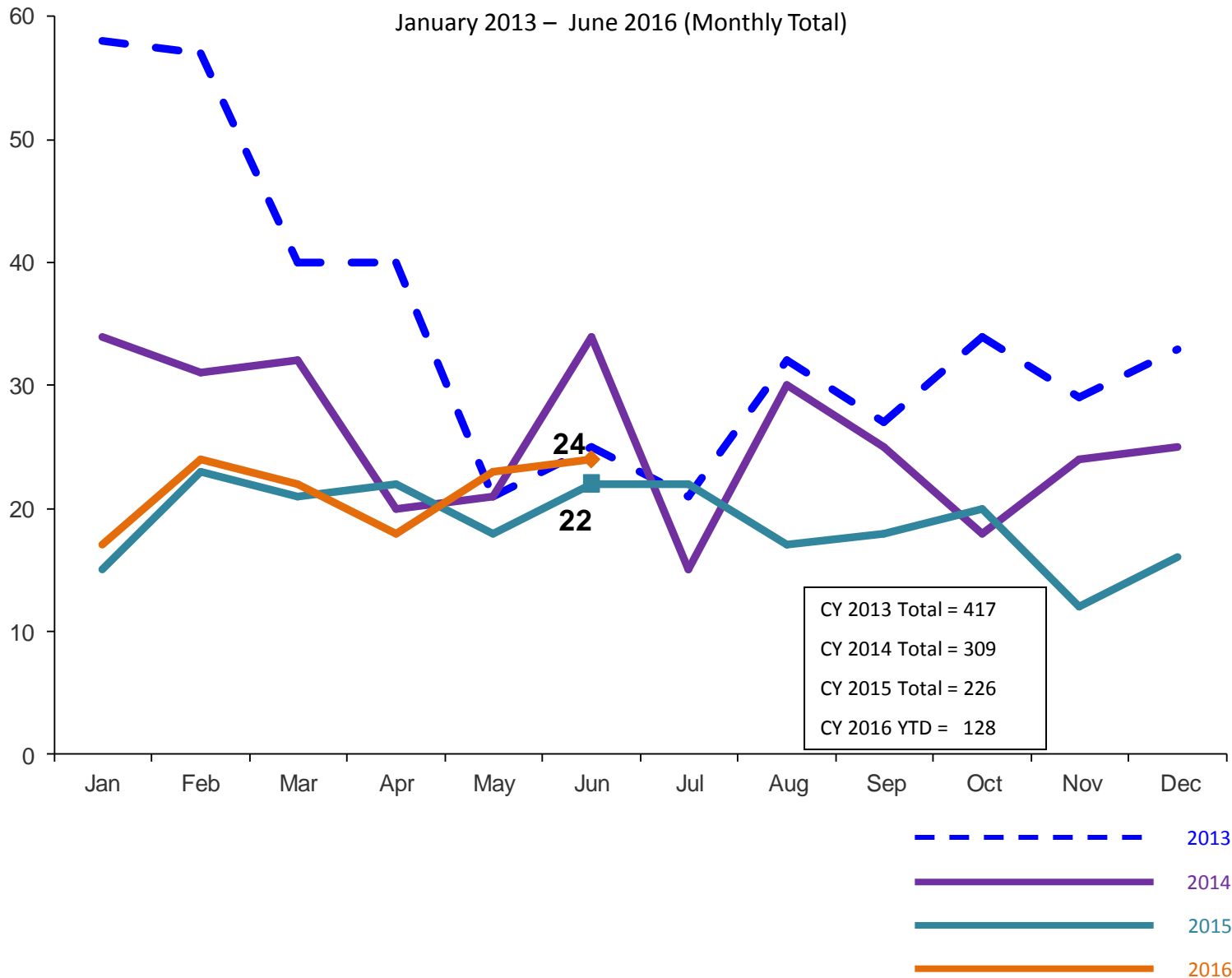
Total Monthly Releases from Detention

January 2013 – June 2016 (Monthly Total)



Close to Home Intakes*

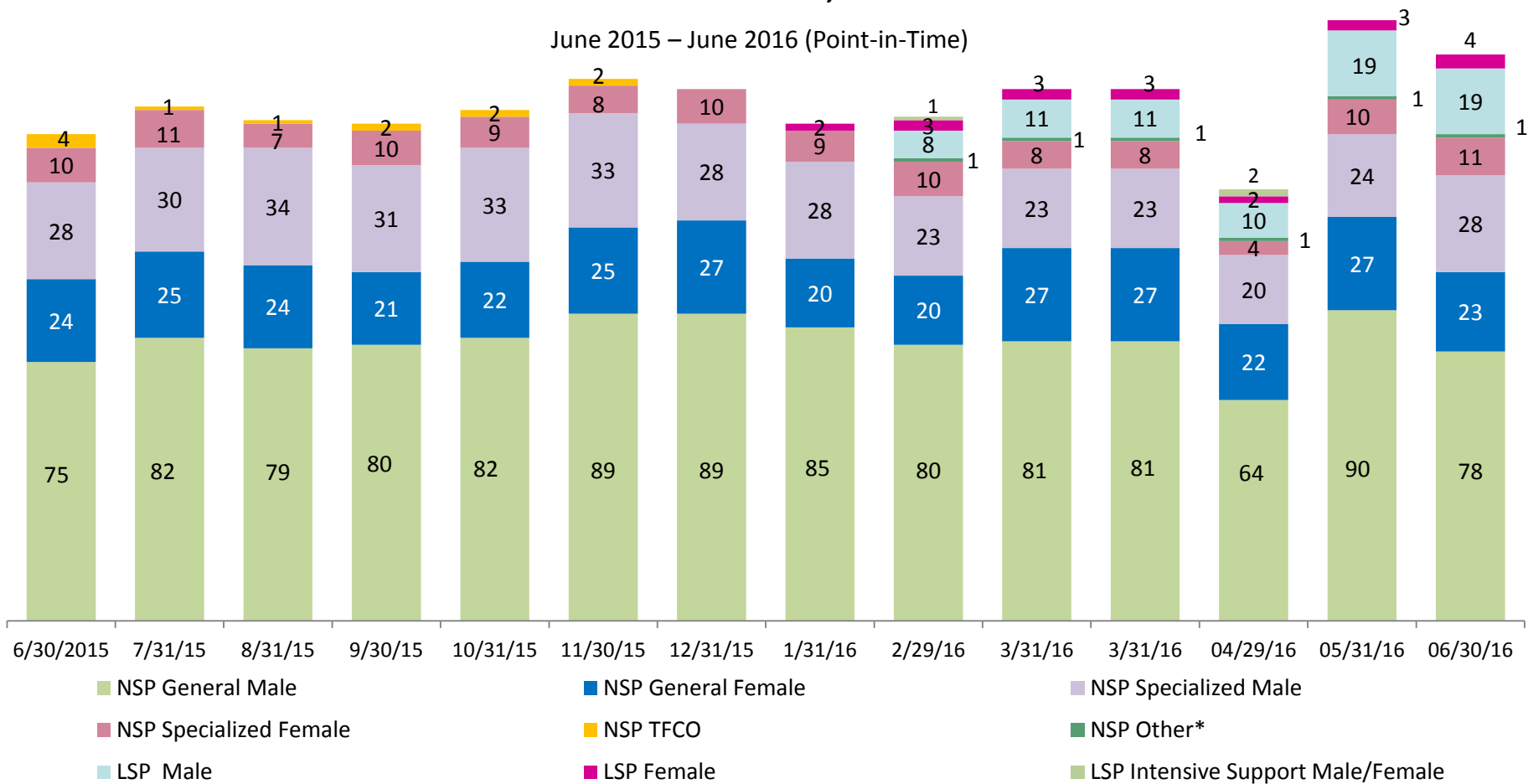
January 2013 – June 2016 (Monthly Total)



*Beginning in December 2015 Close to Home Intakes include LSP as well as NSP.

Close to Home Placement, in 24-hour Care

June 2015 – June 2016 (Point-in-Time)

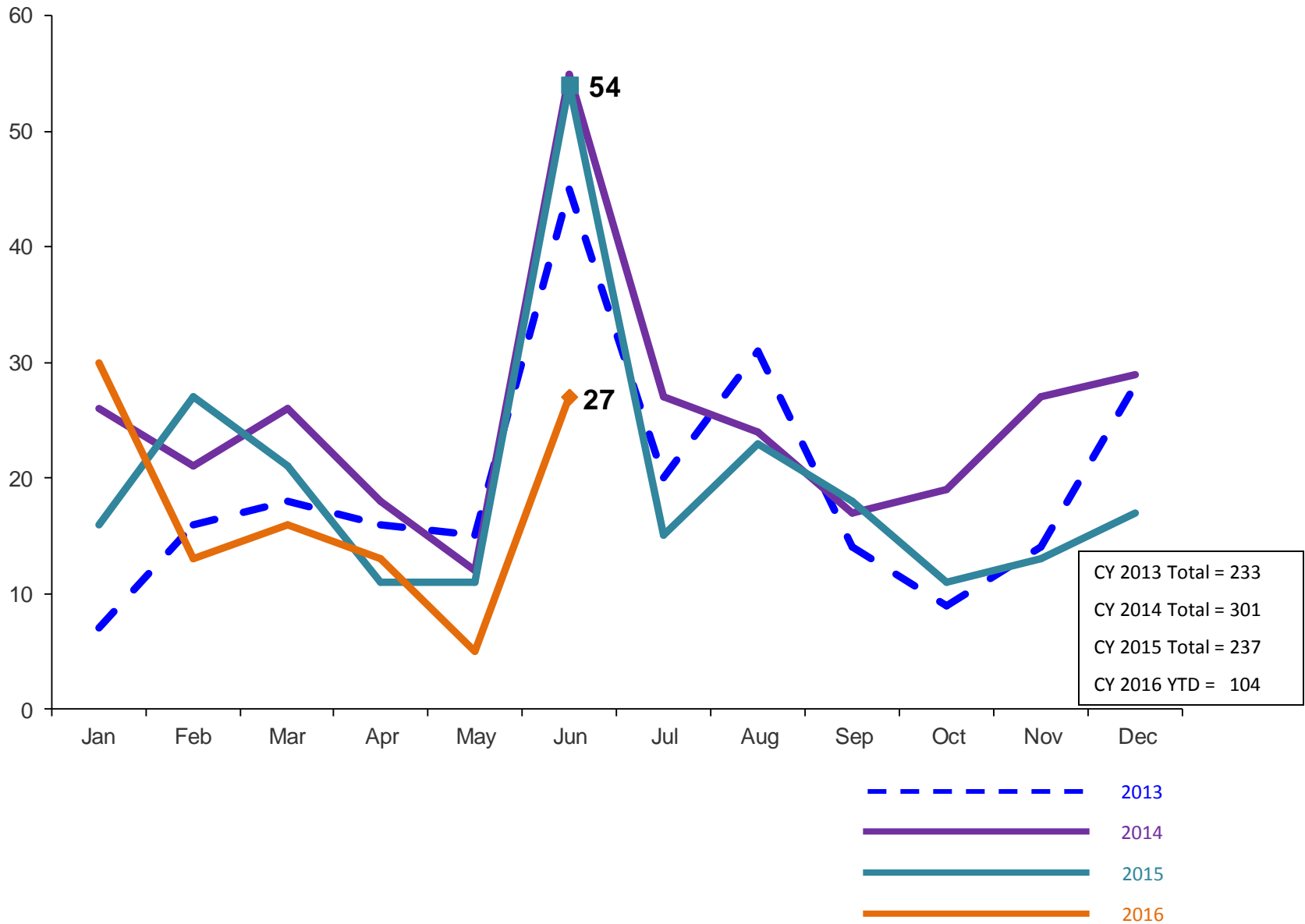


Number in Placement														
	6/30/15	7/31/15	8/31/15	9/30/15	10/31/15	11/30/15	12/31/15	1/31/16	2/29/16	3/31/16	4/29/16	5/31/16	6/30/16	
NSP	141	149	145	144	148	157	154	142	134	140	111	152	141	
LSP	0	0	0	0	0	0	2	6	12	14	14	22	23	

*NSP Other includes youth in child welfare placements.

Releases from Close to Home Placement to Aftercare

February 2013 – June 2016 (Monthly Total)



Appendix

Figure 1: SCR Intakes by Borough, APR 15 – JUN 15 and APR 16 – JUN 16

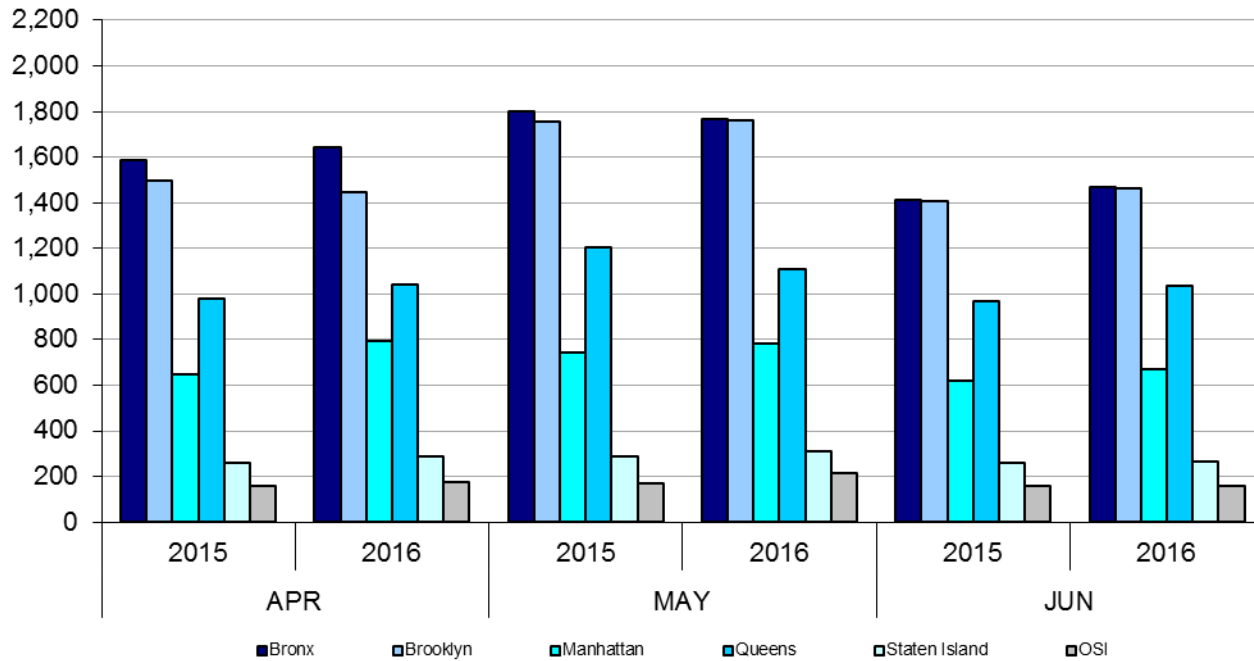


Table 1 - SCR Intake Changes by Borough, APR 15 – JUN 15 and APR 16 – JUN 16

Month	Year	Bronx	Brooklyn	Manhattan	Queens	Staten Island	OSI	Other	Total
APR	2015	1,589	1,497	649	979	257	157	133	5,261
	2016	1,645	1,448	796	1,044	286	174	159	5,552
	% Change	3.5%	-3.3%	22.7%	6.6%	11.3%	10.8%	19.5%	5.5%
MAY	2015	1,800	1,757	746	1,205	287	172	156	6,123
	2016	1,767	1,759	782	1,110	311	217	154	6,100
	% Change	-1.8%	0.1%	4.8%	-7.9%	8.4%	26.2%	-1.3%	-0.4%
JUN	2015	1,411	1,408	621	968	261	157	136	4,962
	2016	1,471	1,464	669	1,038	267	158	151	5,219
	% Change	4.3%	4.0%	7.7%	7.2%	2.3%	0.6%	11.0%	5.2%
Total	2015	4,800	4,662	2,016	3,152	805	486	425	16,346
	2016	4,883	4,671	2,247	3,192	864	549	464	16,871
	% Change	1.7%	0.2%	11.5%	1.3%	7.3%	13.0%	9.2%	3.2%

Figure 2: Citywide SCR Intakes by Reporter Group, APR 15 – JUN 15 and APR 16 – JUN 16

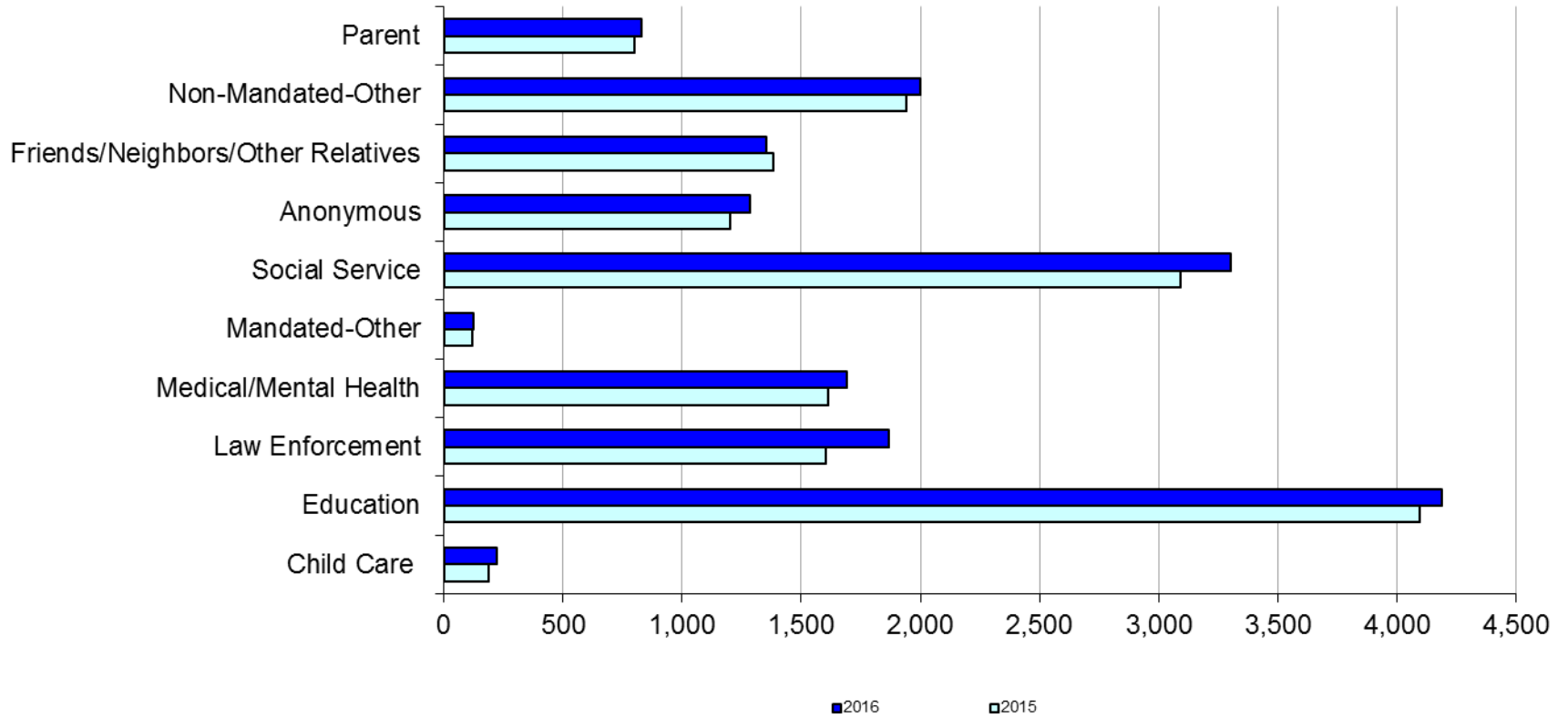
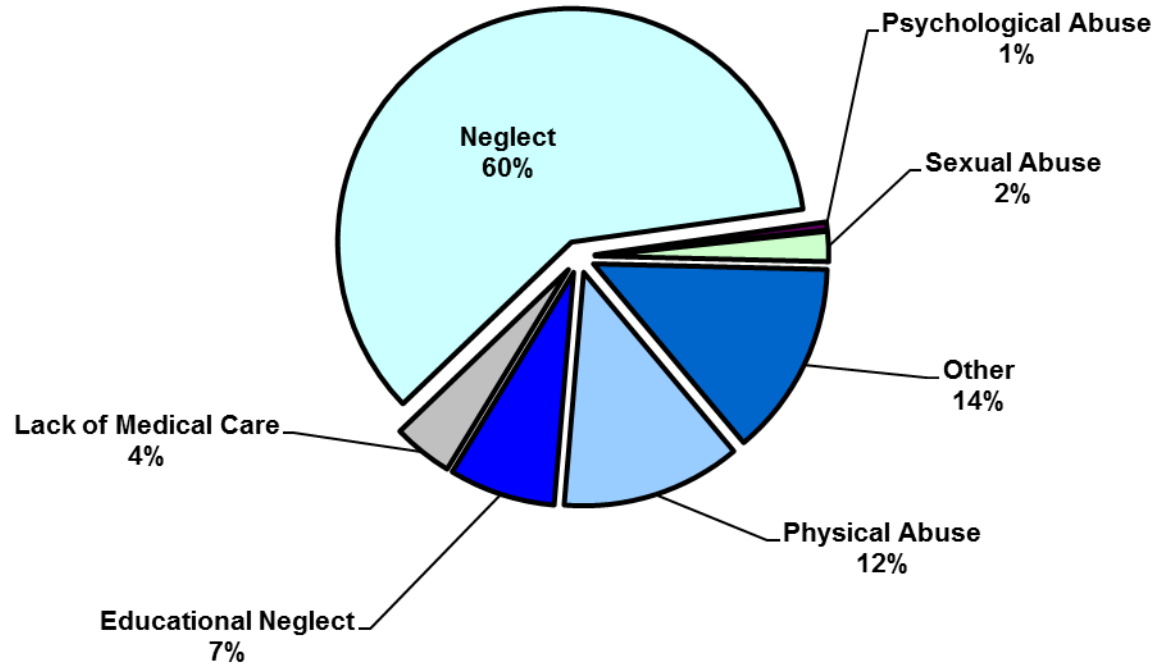


Table 2 - SCR Intakes by Reporter Group, APR 15 – JUN 15 and APR 16 – JUN 16

Year	Child Care/ Substitute Care Personnel	Educational Personnel	Law Enforcement	Medical/ Mental Health Personnel	Mandated- Other	Social Service Personnel	Anonymous	Friends/ Neighbors/ Other Relatives	Non- Mandated- Other	Parent	Foster Parent	Total
Bronx												
2015	51	1,283	390	440	42	1,008	358	379	598	208	0	4,757
2016	57	1,318	443	480	30	977	343	397	635	206	1	4,887
% Change	11.8%	2.7%	13.6%	9.1%	-28.6%	-3.1%	-4.2%	4.7%	6.2%	-1.0%	--	2.7%
Brooklyn												
2015	48	1,217	478	428	30	825	355	428	511	195	1	4,516
2016	59	1,204	620	443	44	851	365	365	518	203	3	4,675
% Change	22.9%	-1.1%	29.7%	3.5%	46.7%	3.2%	2.8%	-14.7%	1.4%	4.1%	200.0%	3.5%
Manhattan												
2015	22	415	242	223	14	391	153	178	266	95	1	2,000
2016	31	440	294	257	19	446	186	192	272	109	2	2,248
% Change	40.9%	6.0%	21.5%	15.2%	35.7%	14.1%	21.6%	7.9%	2.3%	14.7%	100.0%	12.4%
Queens												
2015	19	907	302	326	21	566	203	252	309	143	0	3,048
2016	23	899	316	314	15	655	227	256	346	140	1	3,192
% Change	21.1%	-0.9%	4.6%	-3.7%	-28.6%	15.7%	11.8%	1.6%	12.0%	-2.1%	--	4.7%
Staten Island												
2015	6	204	82	95	2	111	81	90	88	49	0	808
2016	9	260	81	86	6	123	106	77	81	36	0	865
% Change	50.0%	27.5%	-1.2%	-9.5%	200.0%	10.8%	30.9%	-14.4%	-8.0%	-26.5%	--	7.1%
OSI												
2015	34	39	20	44	9	67	37	26	130	81	4	491
2016	37	40	26	41	8	114	36	43	103	97	3	548
% Change	8.8%	2.6%	30.0%	-6.8%	-11.1%	70.1%	-2.7%	65.4%	-20.8%	19.8%	-25.0%	11.6%
Other												
2015	6	32	90	55	2	124	15	30	40	31	0	425
2016	7	26	89	68	3	134	22	21	44	36	0	450
% Change	16.7%	-18.8%	-1.1%	23.6%	50.0%	8.1%	46.7%	-30.0%	10.0%	16.1%	--	5.9%
Citywide												
2015	186	4,097	1,604	1,611	120	3,092	1,202	1,383	1,942	802	6	16,045
2016	223	4,187	1,869	1,689	125	3,300	1,285	1,351	1,999	827	10	16,865
% Change	19.9%	2.2%	16.5%	4.8%	4.2%	6.7%	6.9%	-2.3%	2.9%	3.1%	66.7%	5.1%

Figure 3: SCR Allegations, APR 16 – JUN 16



Total Allegations = 42,309

Allegations are grouped as follows: Physical Abuse - burn, fatality, fracture, choking, twisting, shaking, excessive corporal punishment, internal injuries, lacerations, bruises, welts, poisoning, noxious substances; Educational Neglect – educational neglect; Lack of Medical Care – lack of medical care; Neglect - inadequate guardianship, inadequate food, clothing, shelter, lack of supervision, malnutrition, failure to thrive, swelling, dislocations, sprains; Psychological Abuse - isolation, emotional neglect; Sexual Abuse – sexual abuse; and Other -parental drug use, child drug use, abandonment, inappropriate custodial conduct.

Table 3 - SCR Allegations, APR 15 - JUN 15 and APR 16 – JUN 16

Year	Physical Abuse	Educational Neglect	Lack of Medical Care	Neglect	Psychological Abuse	Sexual Abuse	Other	Total
Bronx								
2015	1,470	1,222	541	7,299	73	245	1,511	12,361
2016	1,506	1,127	537	7,618	54	238	1,660	12,740
% Change	2.4%	-7.8%	-0.7%	4.4%	-26.0%	-2.9%	9.9%	3.1%
Brooklyn								
2015	1,400	1,027	413	6,959	54	259	1,469	11,581
2016	1,472	937	483	7,217	88	255	1,544	11,996
% Change	5.1%	-8.8%	16.9%	3.7%	63.0%	-1.5%	5.1%	3.6%
Manhattan								
2015	489	334	198	2535	25	101	555	4,237
2016	549	361	193	2738	24	96	640	4,601
% Change	12.3%	8.1%	-2.5%	8.0%	-4.0%	-5.0%	15.3%	8.6%
Queens								
2015	1,011	447	310	4,245	69	151	988	7,221
2016	1,058	441	341	4,444	48	163	1,035	7,530
% Change	4.6%	-1.3%	10.0%	4.7%	-30.4%	7.9%	4.8%	4.3%
Staten Island								
2015	212	162	68	1,450	20	40	418	2,370
2016	242	163	81	1,397	9	33	428	2,353
% Change	14.2%	0.6%	19.1%	-3.7%	-55.0%	-17.5%	2.4%	-0.7%
OSI								
2015	308	51	66	1,248	12	51	129	1,865
2016	334	51	75	1,310	5	54	182	2,011
% Change	8.4%	0.0%	13.6%	5.0%	-58.3%	5.9%	41.1%	7.8%
Other								
2015	106	48	38	554	6	15	219	986
2016	102	34	40	631	6	39	226	1,078
% Change	-3.8%	-29.2%	5.3%	13.9%	0.0%	160.0%	3.2%	9.3%
Citywide								
2015	4,996	3,291	1,634	24,290	259	862	5,289	40,621
2016	5,263	3,114	1,750	25,355	234	878	5,715	42,309
% Change	5.3%	-5.4%	7.1%	4.4%	-9.7%	1.9%	8.1%	4.2%

**TABLE 4 - Child Welfare Preventive Cases
Opened and Closed
January 2013 to June 2016**

Month	Opened Cases	Closed Cases
2013		
Jan-13	753	884
Feb-13	742	916
Mar-13	801	1,171
Apr-13	785	988
May-13	682	1,337
Jun-13	775	780
Jul-13	802	1,004
Aug-13	777	1,084
Sep-13	727	724
Oct-13	780	765
Nov-13	725	685
Dec-13	946	552
2014		
Jan-14	841	640
Feb-14	885	679
Mar-14	998	874
Apr-14	919	896
May-14	919	888
Jun-14	890	762
Jul-14	973	1,077
Aug-14	826	943
Sep-14	841	705
Oct-14	835	819
Nov-14	677	638
Dec-14	1,062	721
2015		
Jan-15	728	716
Feb-15	902	590
Mar-15	1,122	686
Apr-15	977	743
May-15	914	842
Jun-15	1,068	797
Jul-15	899	1,070
Aug-15	893	891
Sep-15	764	847
Oct-15	749	772
Nov-15	746	652
Dec-15	1,013	707
2016		
Jan-16	792	668
Feb-16	897	667
Mar-16	1,024	869
Apr-16	827	794
May-16	878	709
Jun-16	963	700
Jul-16	-	-
Aug-16	-	-
Sep-16	-	-
Oct-16	-	-
Nov-16	-	-
Dec-16	-	-

**Table 5 - Referrals to Child Welfare Preventive Services by Source
January 2013 to June 2016**

Month	Total Referrals	Division of Child Protection	Foster Care Agencies	PPRS Transfer	School	Self	Other Sources*
2013							
Jan-13	1,474	74.1%	1.2%	7.3%	1.2%	3.7%	12.5%
Feb-13	1,308	75.8%	1.1%	8.0%	1.6%	2.9%	10.6%
Mar-13	1,270	73.5%	1.2%	6.7%	2.4%	3.9%	12.3%
Apr-13	1,421	77.9%	0.8%	7.4%	0.9%	3.0%	10.1%
May-13	1,320	68.4%	0.5%	10.2%	1.5%	3.8%	15.5%
Jun-13	953	69.2%	1.2%	9.4%	2.6%	5.0%	12.6%
Jul-13	1,014	66.3%	1.9%	14.4%	1.6%	3.9%	11.9%
Aug-13	1,212	70.5%	0.7%	11.8%	0.7%	4.7%	11.6%
Sep-13	1,262	64.0%	2.1%	11.3%	1.7%	6.7%	14.2%
Oct-13	1,319	61.0%	1.1%	9.0%	2.9%	7.5%	18.5%
Nov-13	1,249	55.9%	1.6%	10.5%	4.6%	9.2%	18.3%
Dec-13	1,464	62.2%	1.2%	8.2%	2.3%	9.2%	17.0%
CY 2013	15,266	68.3%	1.2%	9.4%	2.0%	5.3%	13.8%
2014							
Jan-14	1,537	70.0%	1.2%	6.6%	2.3%	5.8%	14.2%
Feb-14	1,334	69.7%	0.8%	8.4%	1.7%	5.5%	13.9%
Mar-14	1,612	70.0%	1.4%	8.6%	1.6%	5.3%	13.1%
Apr-14	1,525	70.2%	0.9%	7.6%	2.1%	3.7%	15.4%
May-14	1,580	74.4%	0.7%	8.3%	1.4%	5.2%	10.0%
Jun-14	1,550	78.6%	1.2%	6.3%	1.2%	3.2%	9.4%
Jul-14	1,659	79.6%	1.5%	6.7%	0.4%	4.2%	7.6%
Aug-14	1,395	72.2%	1.6%	10.8%	0.3%	4.9%	10.3%
Sep-14	1,597	49.4%	1.5%	7.6%	0.3%	4.5%	36.8%
Oct-14	1,634	68.2%	1.9%	10.0%	1.2%	4.6%	14.1%
Nov-14	1,311	66.4%	0.9%	14.3%	2.4%	3.9%	12.1%
Dec-14	1,785	71.1%	1.4%	8.8%	2.9%	4.8%	11.0%
CY 2014	18,519	70.1%	1.3%	8.6%	1.5%	4.6%	14.0%
2015							
Jan-15	1,430	74.4%	1.6%	8.7%	1.8%	3.8%	9.7%
Feb-15	1,538	76.5%	0.8%	8.1%	1.8%	4.7%	8.2%
Mar-15	1,798	74.6%	0.9%	7.3%	1.6%	4.8%	10.8%
Apr-15	1,719	78.2%	1.3%	7.2%	0.6%	3.5%	9.1%
May-15	1,561	77.2%	1.0%	5.1%	1.5%	4.5%	10.8%
Jun-15	1,716	77.4%	1.1%	7.7%	1.2%	3.5%	9.1%
Jul-15	1,511	79.6%	0.9%	7.2%	0.3%	3.8%	8.2%
Aug-15	1,418	79.3%	2.2%	7.8%	0.2%	3.1%	7.5%
Sep-15	1,209	72.1%	2.8%	10.4%	0.5%	5.5%	8.6%
Oct-15	1,338	70.4%	1.9%	8.3%	2.1%	5.8%	11.6%
Nov-15	1,220	68.2%	1.8%	9.6%	1.4%	6.2%	12.8%
Dec-15	1,526	73.5%	1.6%	8.0%	2.0%	5.0%	9.9%
2016							
Jan-16	1,370	73.6%	1.6%	8.2%	0.7%	5.4%	10.6%
Feb-16	1,436	75.8%	2.2%	7.8%	1.0%	3.8%	9.3%
Mar-16	1,557	72.0%	2.1%	8.8%	1.0%	4.6%	11.4%
Apr-16	1,378	76.1%	1.5%	7.4%	1.5%	3.5%	10.0%
May-16	1,386	73.4%	1.4%	8.7%	1.0%	4.7%	10.8%
Jun-16	1,537	79.1%	2.0%	6.6%	1.3%	3.1%	7.9%

*Other Community Sources includes the Department of Homeless Services, Family Court, FAP, Hospitals and Medical facilities, the NYC Housing Authority, Probation, and Sponsor Agencies.