

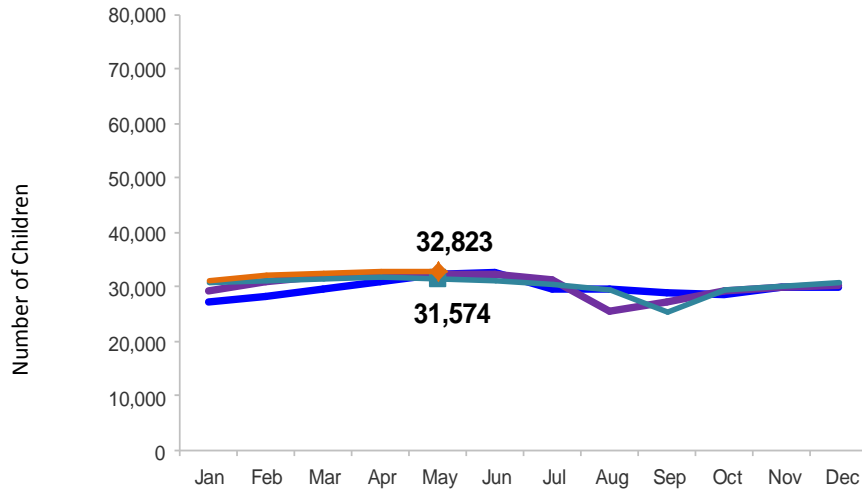


Flash

June 2016

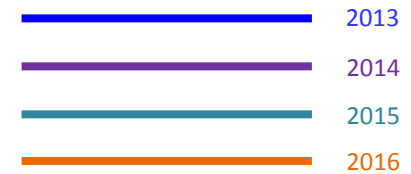
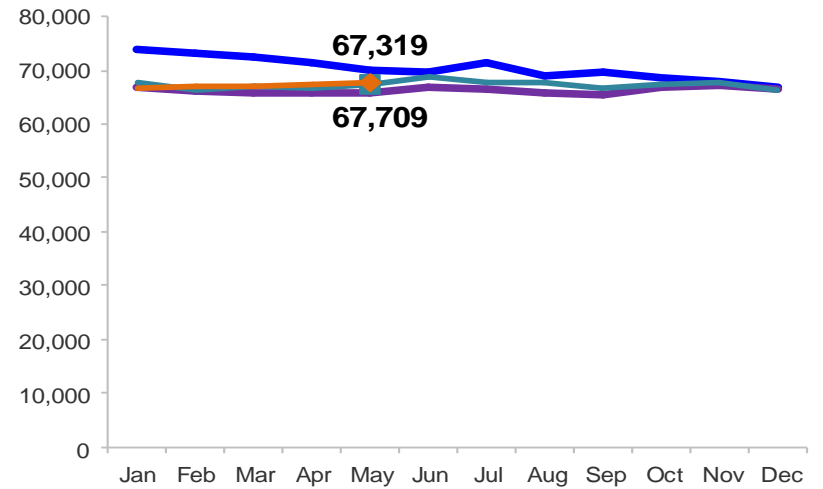
Children Enrolled in Contracted EarlyLearn Programs

January 2013 – May 2016 (End of Month)



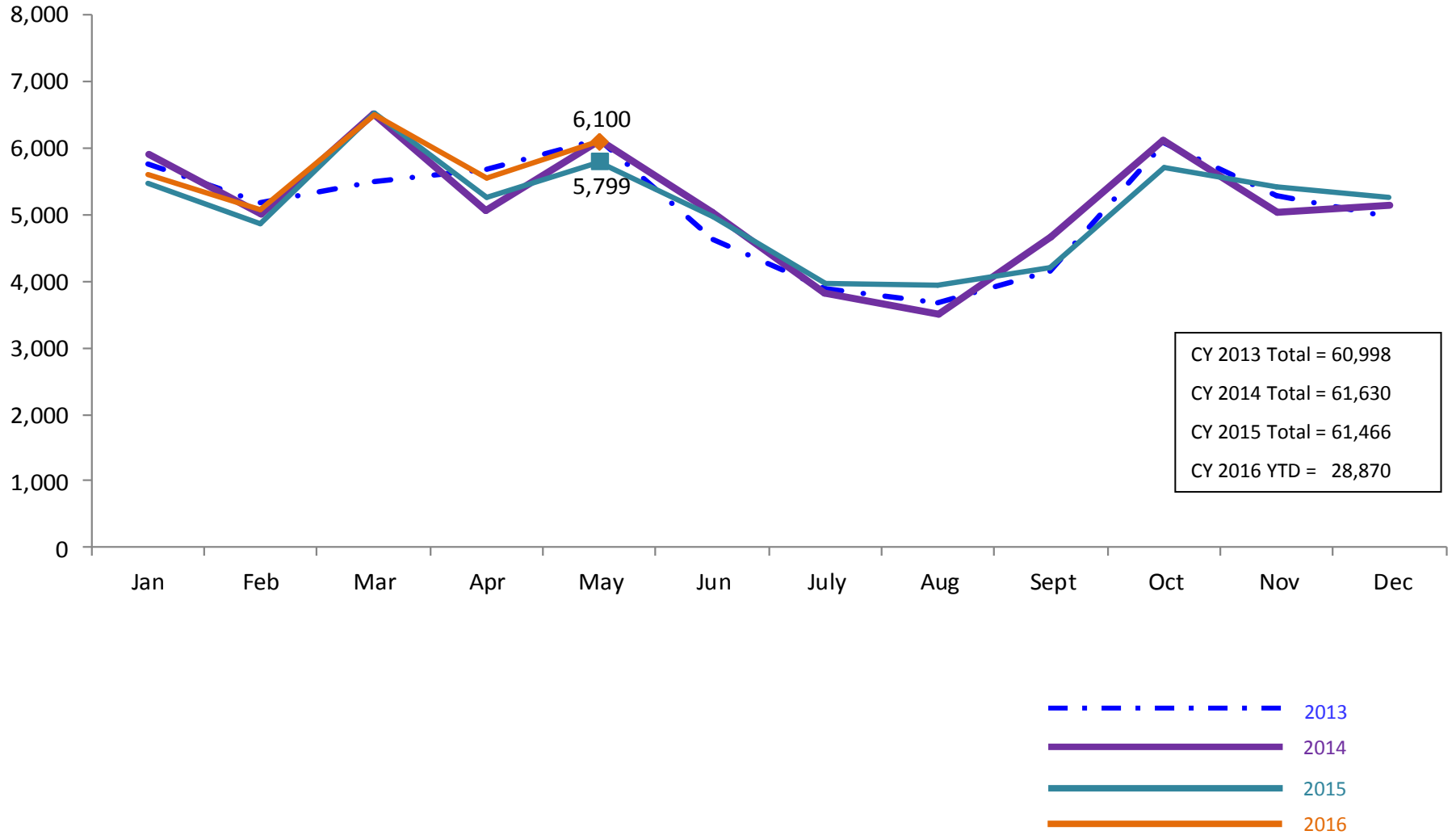
Children Using Vouchers for Child Care

January 2013 – May 2016 (End of Month)



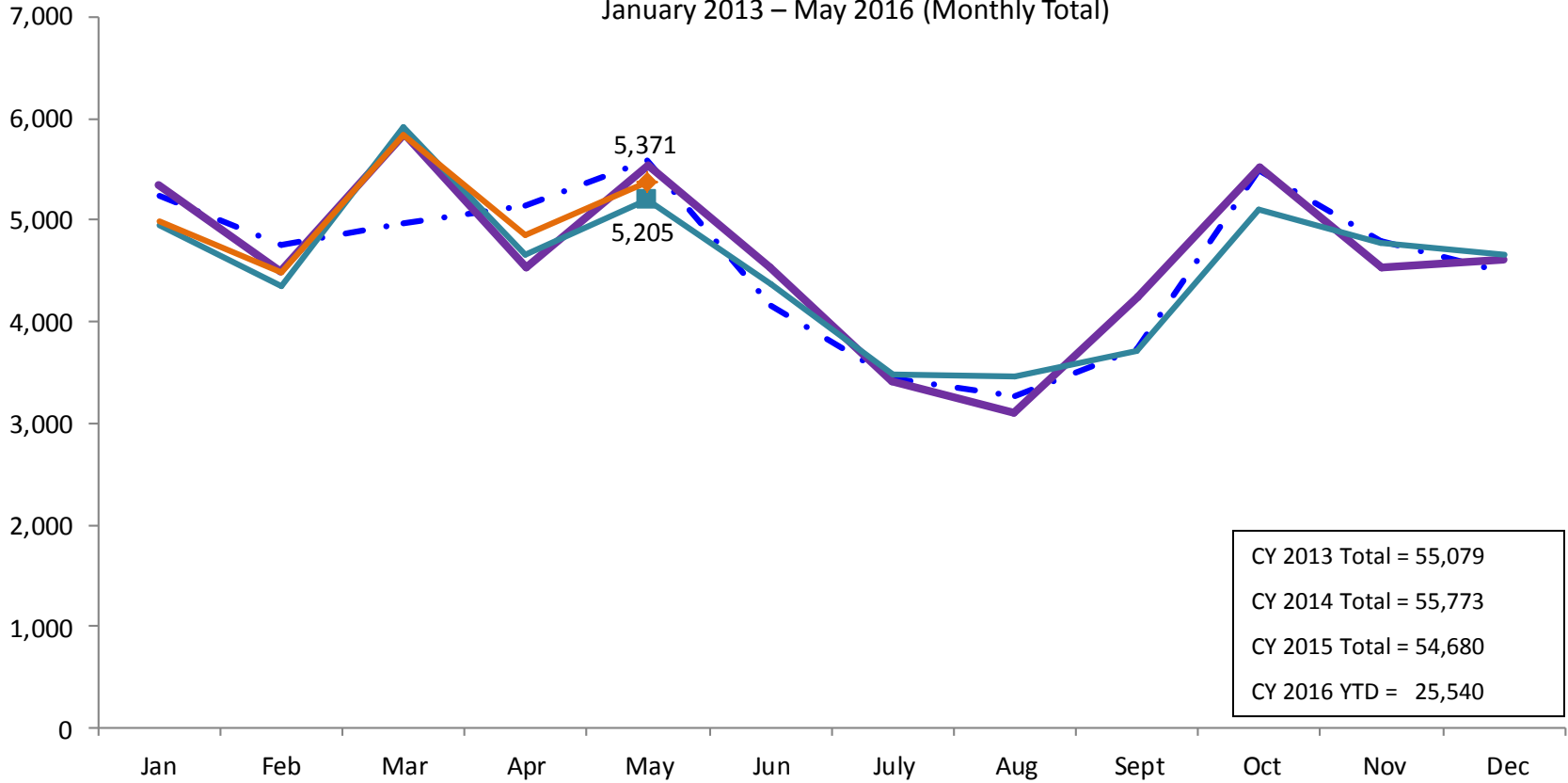
SCR Intakes

January 2013 – May 2016 (Monthly Total)

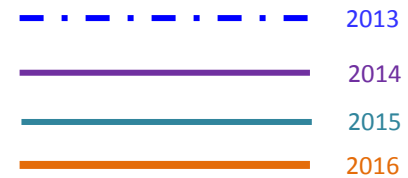


SCR Consolidated Investigations

January 2013 – May 2016 (Monthly Total)

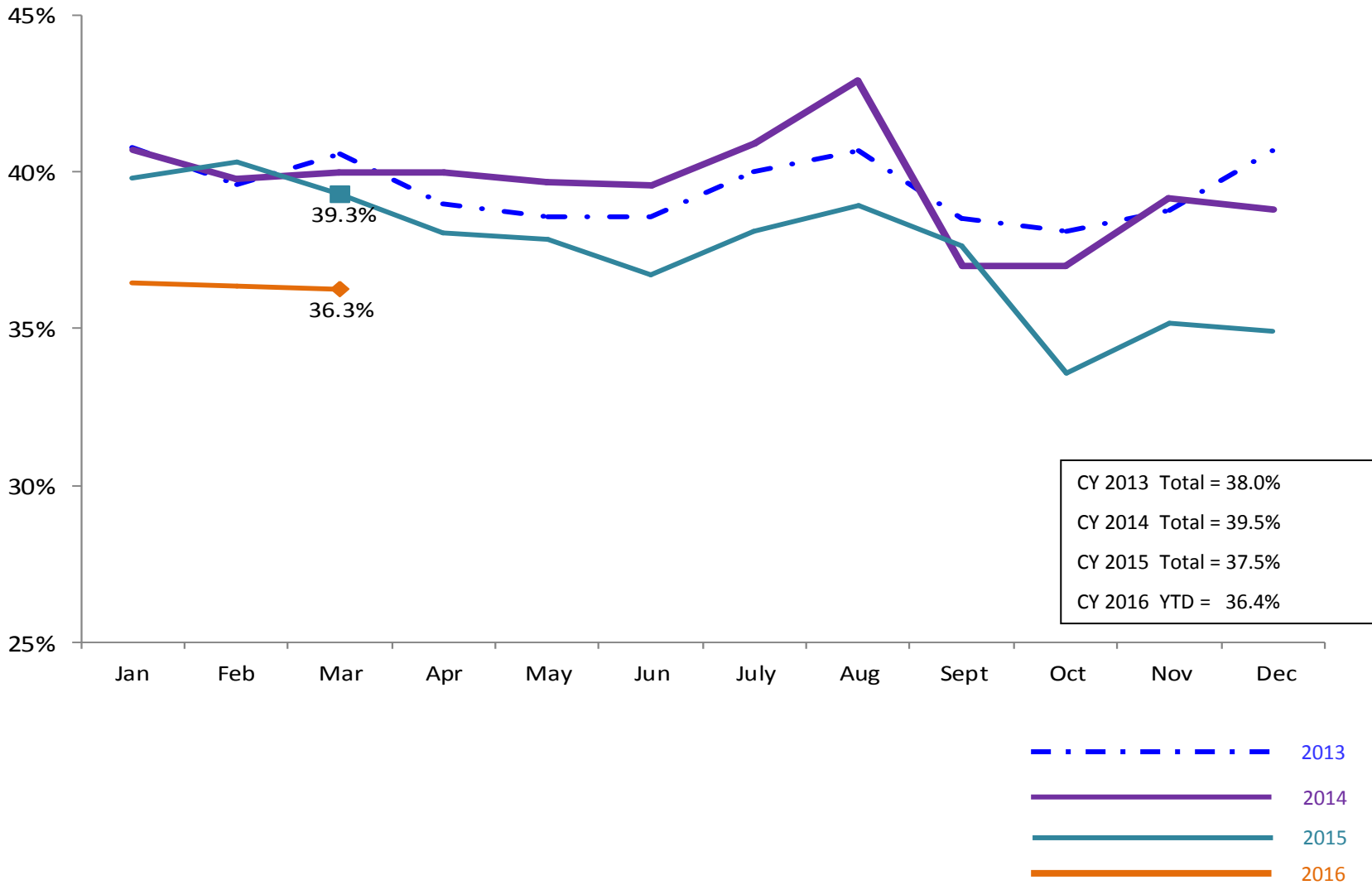


CY 2013 Total = 55,079
 CY 2014 Total = 55,773
 CY 2015 Total = 54,680
 CY 2016 YTD = 25,540



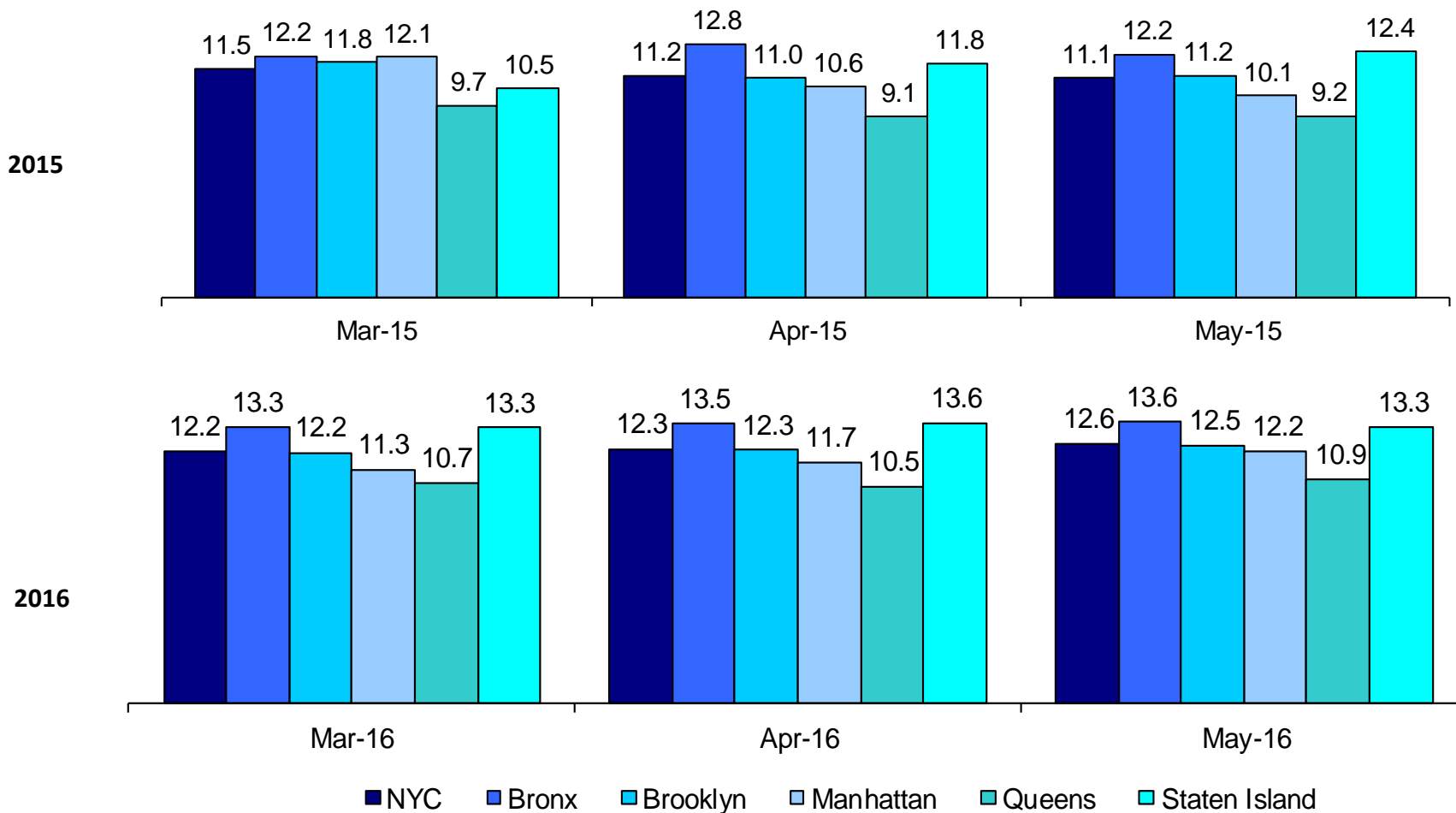
SCR Investigation Indication Rate

January 2012 – March 2016



Average P/D Combined Caseload*

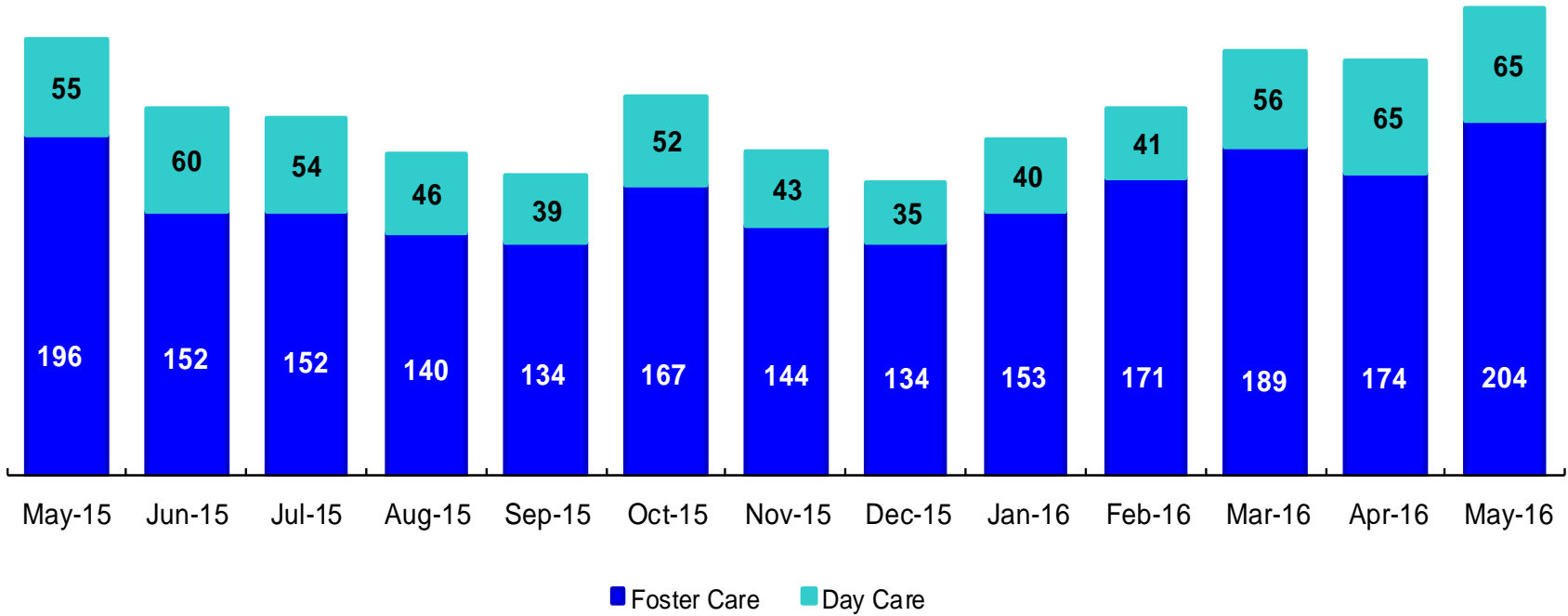
March 2015 – May 2015 & March 2016 – May 2016



* Caseloads are of protective/diagnostic caseworkers only and exclude the caseloads carried by Level I and Level II Supervisors.

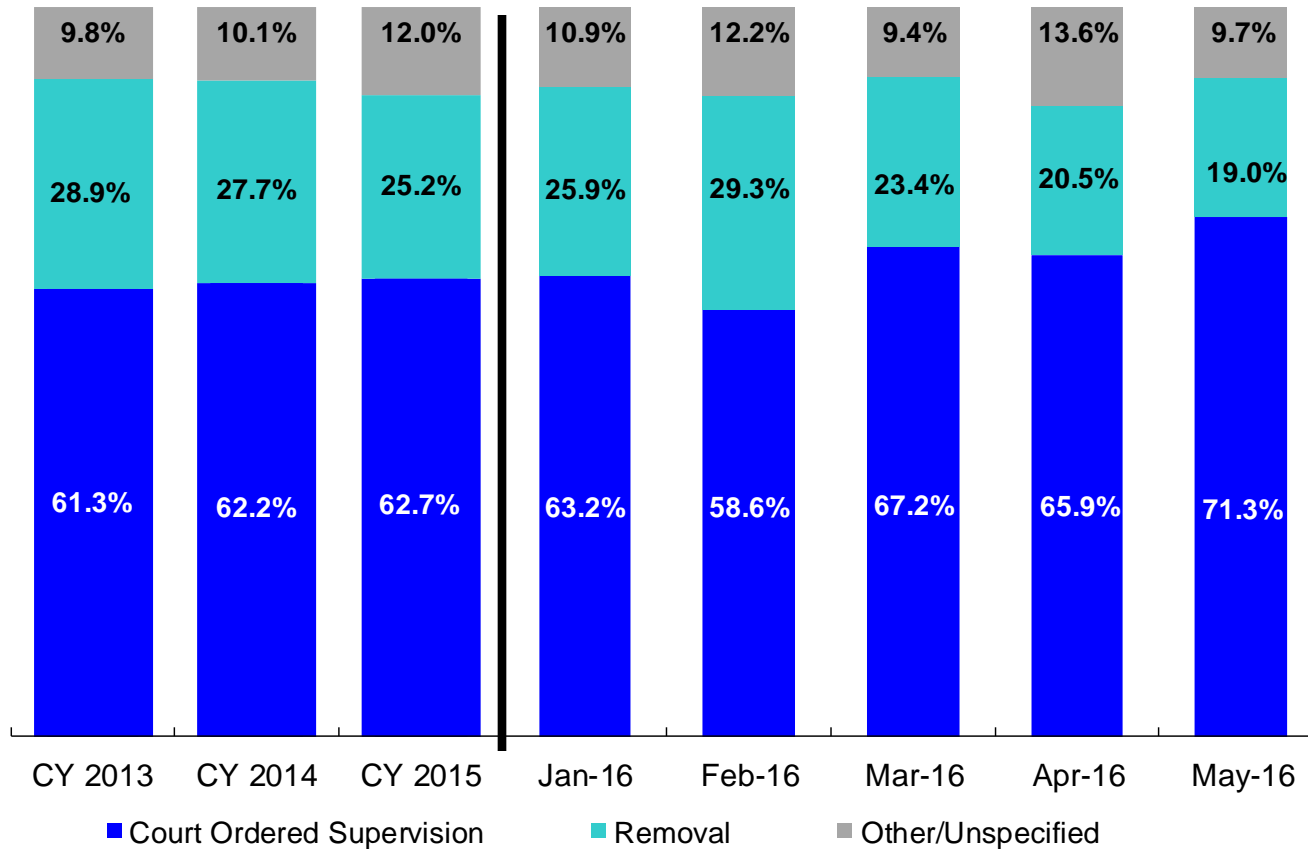
OSI Investigations by Program

May 2015 – May 2016



	May 2015	Jun 2015	Jul 2015	Aug 2015	Sep 2015	Oct 2015	Nov 2015	Dec 2015	Jan 2016	Feb 2016	Mar 2016	Apr 2016	May 2016
Number of Investigations	251	212	206	186	173	219	187	169	193	212	245	239	269

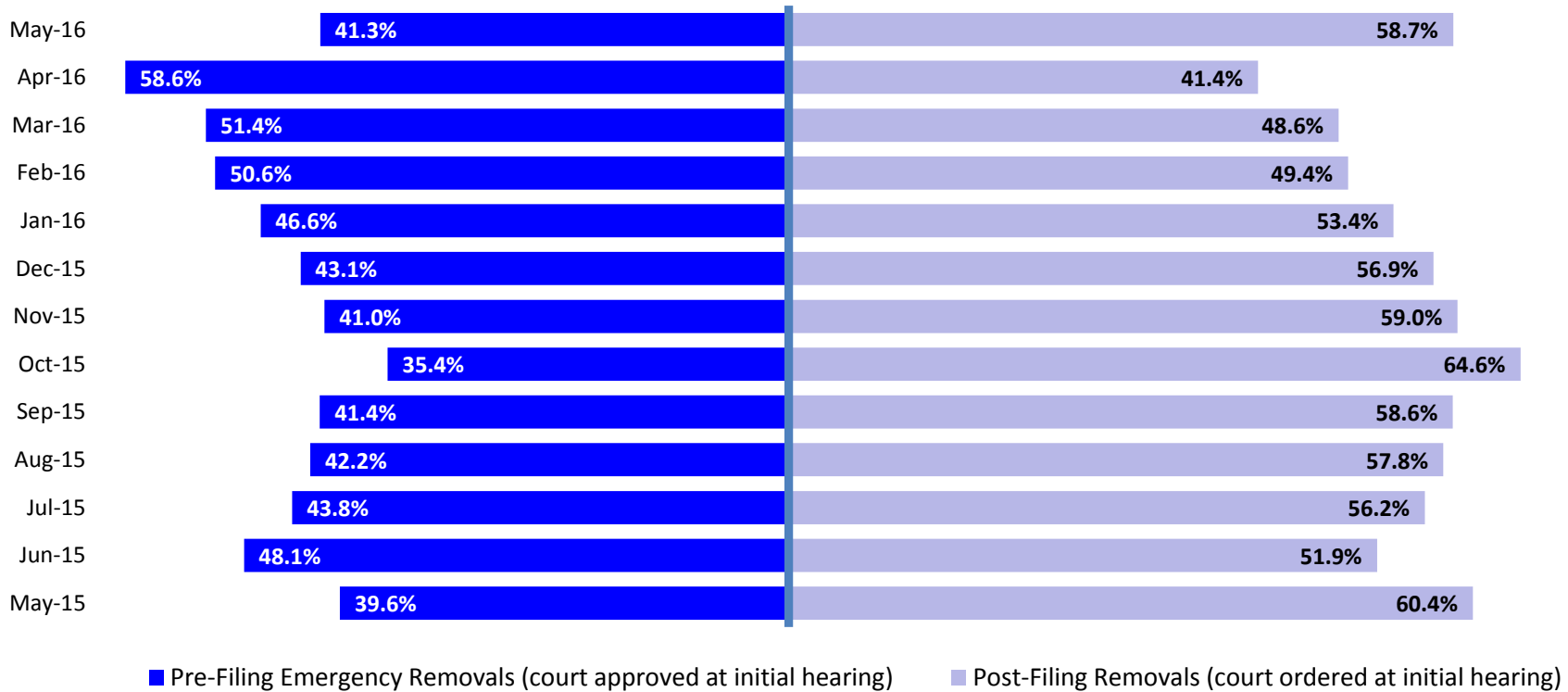
Article 10 Total Filings & Filing Outcomes, CY 2013 – May 2016



	CY 2013	CY 2014	CY 2015	Jan 2016	Feb 2016	Mar 2016	Apr 2016	May 2016
Article10 Filings	9,318	9,900	10,257	737	830	890	883	790

Note: The category "Other/Unspecified" includes released with no supervision, no order issued and no outcome specified. Outcomes of cases heard the next day are not captured in this report

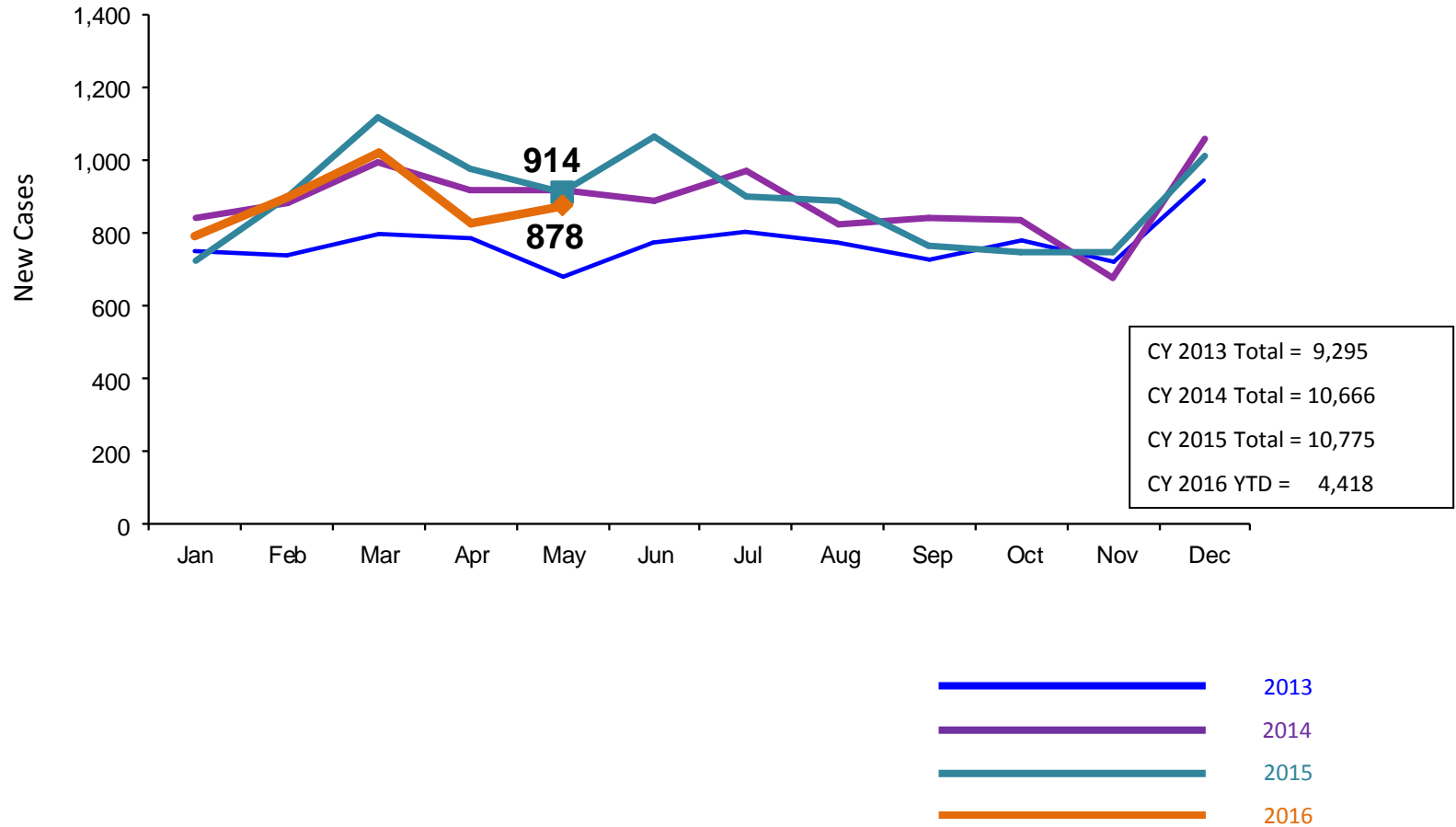
Article 10 Filing Removals, May 2015 – May 2016



	May 2015	Jun 2015	July 2015	Aug 2015	Sep 2015	Oct 2015	Nov 2015	Dec 2015	Jan 2016	Feb 2016	Mar 2016	Apr 2016	May 2016
Number of Removals	250	206	235	180	174	178	166	195	191	243	208	181	150

New Child Welfare Preventive Cases*

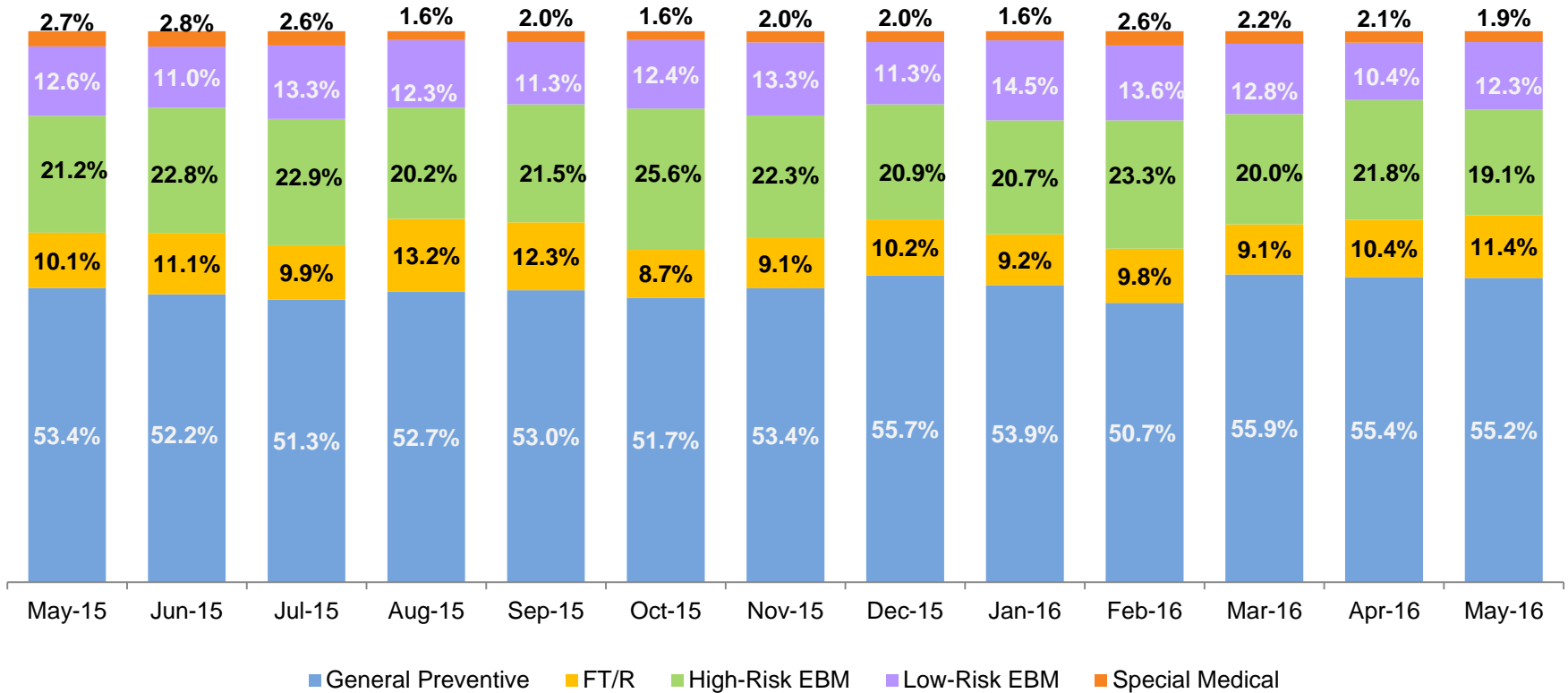
January 2013 – May 2016



*Notes: 1) New preventive cases do not include cases transferred from one preventive program to another. 2) See Pages 33 and 34 of the Appendix for supporting data.

New Child Welfare Preventive Cases by Program Type *

May 2015 – May 2016

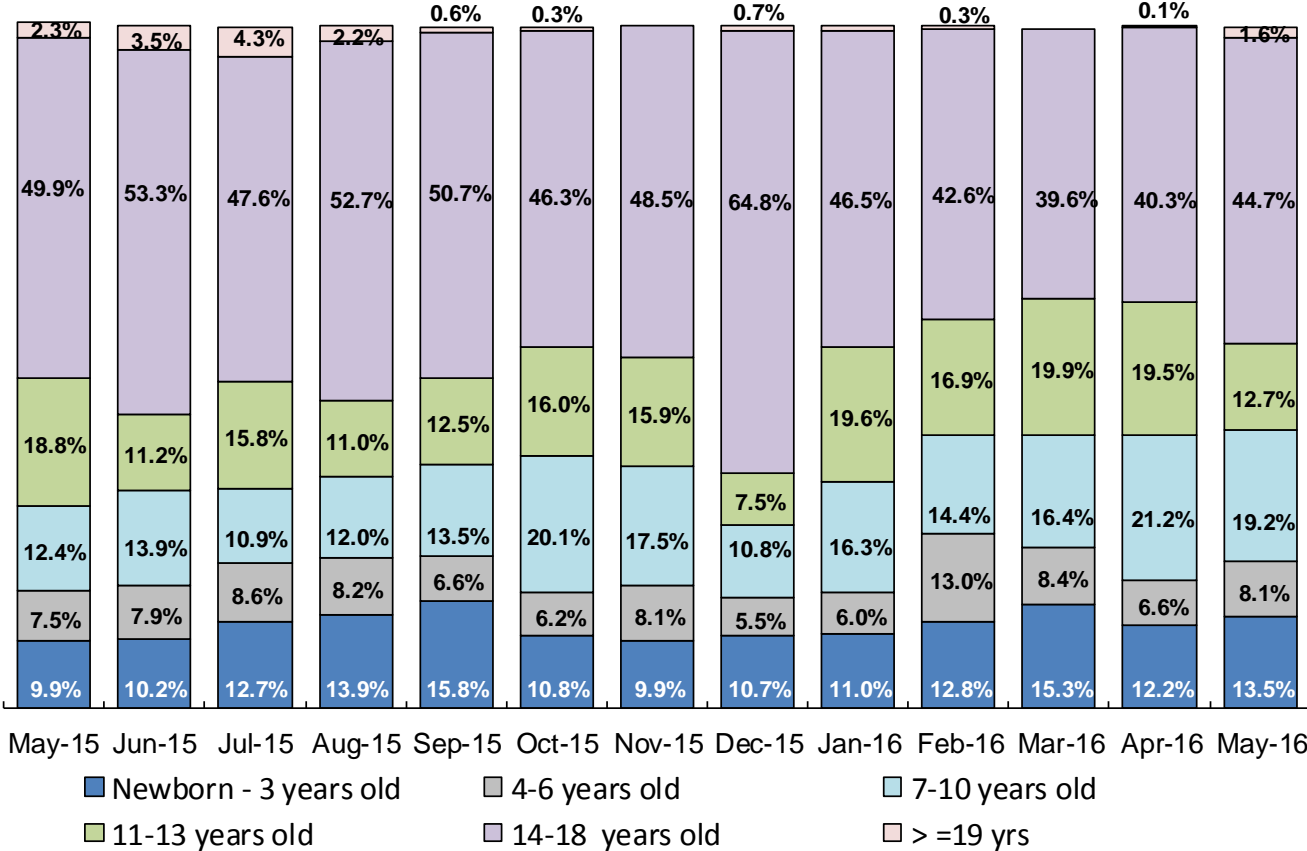


	May 2015	Jun 2015	Jul 2015	Aug 2015	Sep 2015	Oct 2015	Nov 2015	Dec 2015	Jan 2016	Feb 2016	Mar 2016	Apr 2016	May 2016
Number of New Preventive Cases	914	1,068	899	893	764	749	746	1,013	792	897	1,024	827	878

* New preventive cases exclude cases transferred from one preventive program to another.

Average Pre-Placement Residential Monthly Population

May 2015 – May 2016

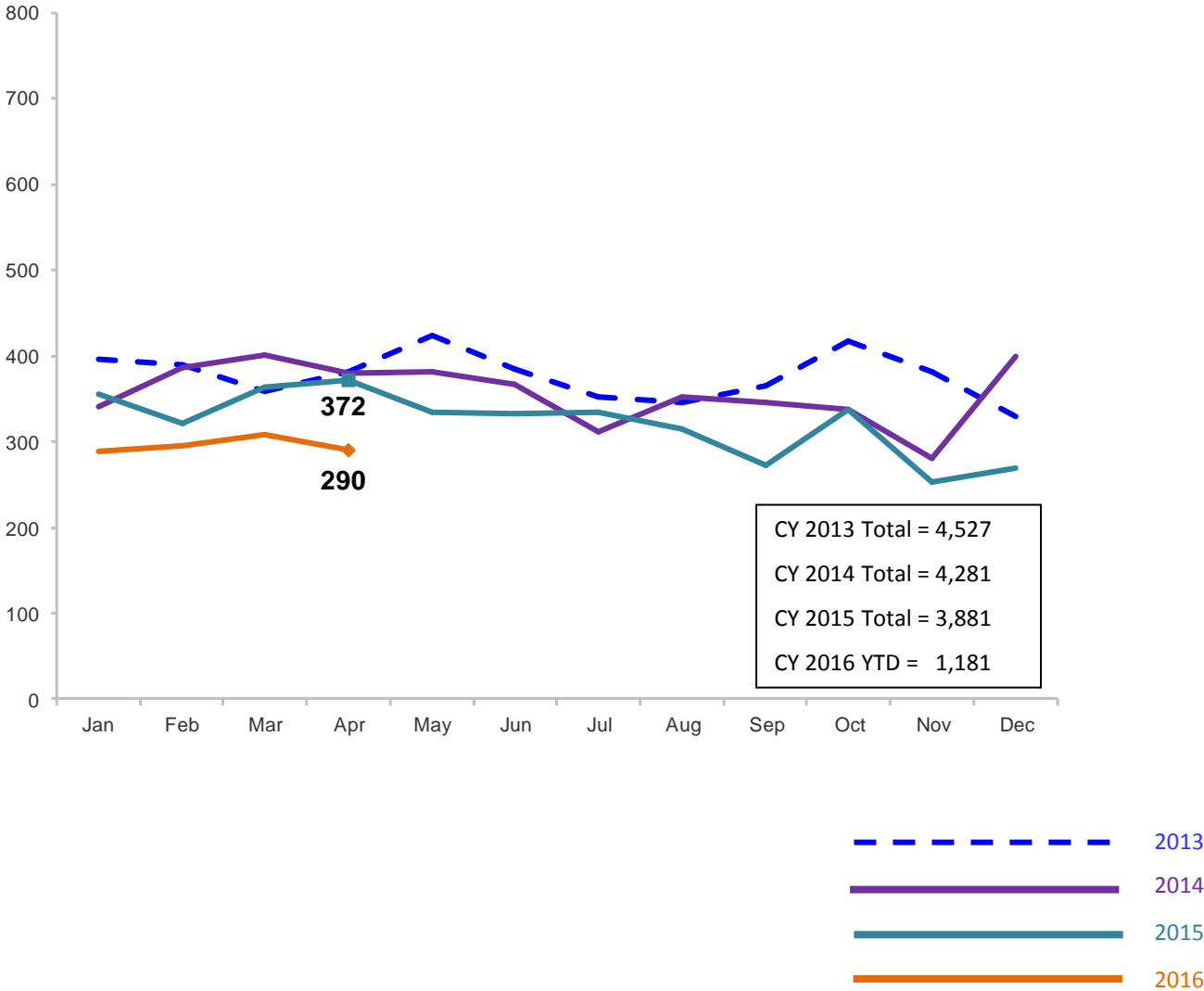


	May 2015	Jun 2015	July 2015	Aug 2015	Sep 2015	Oct 2015	Nov 2015	Dec 2015	Jan 2016	Feb 2016	Mar 2016	Apr 2016	May 2016
Average Number of Children	60	50	42	40	36	45	40	40	46	45	49	53	34

*Beginning in December 2014 the pre-placement residential population includes children at the Children’s Center and at the MercyFirst Reception Center.

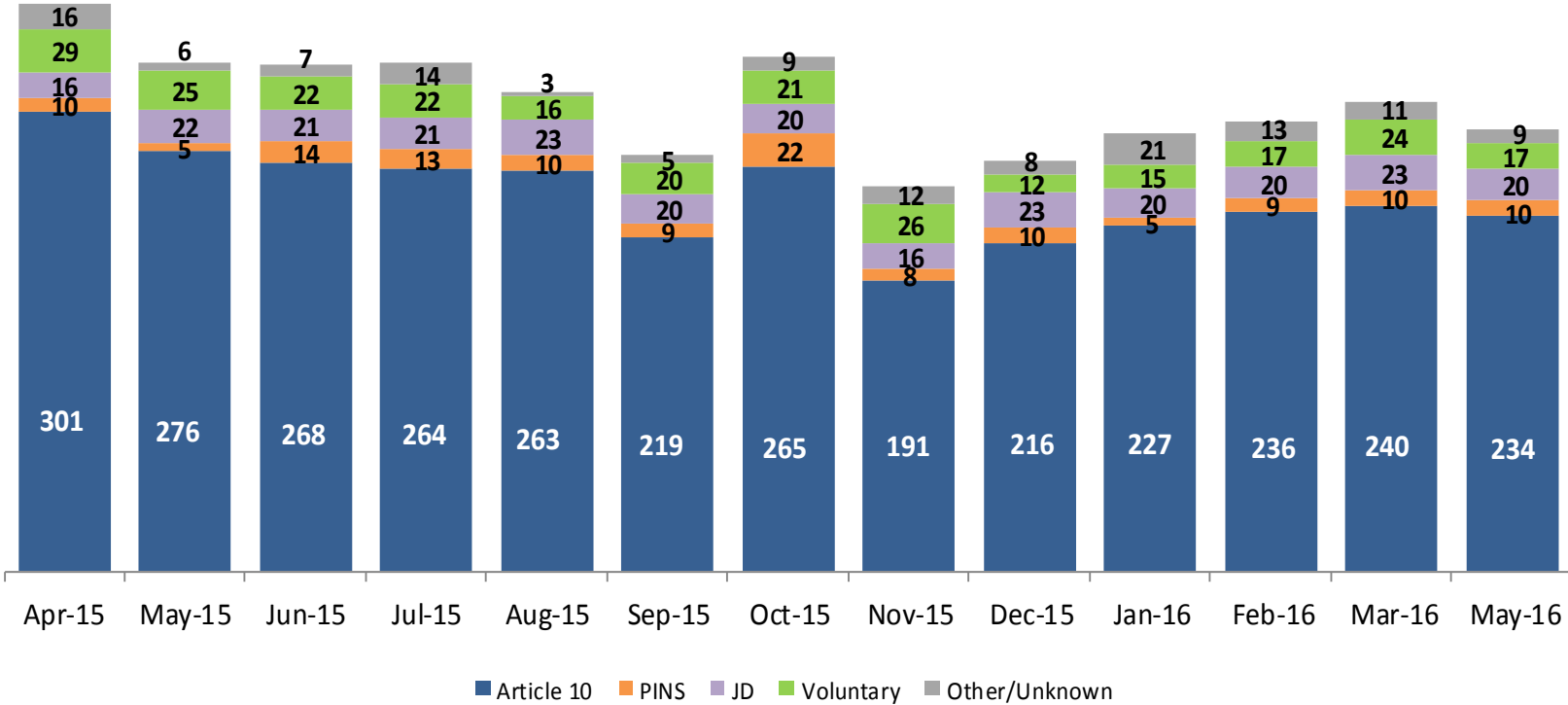
Total Monthly Placements

January 2013 – April 2016



Reason for Initial Placements into Foster Care

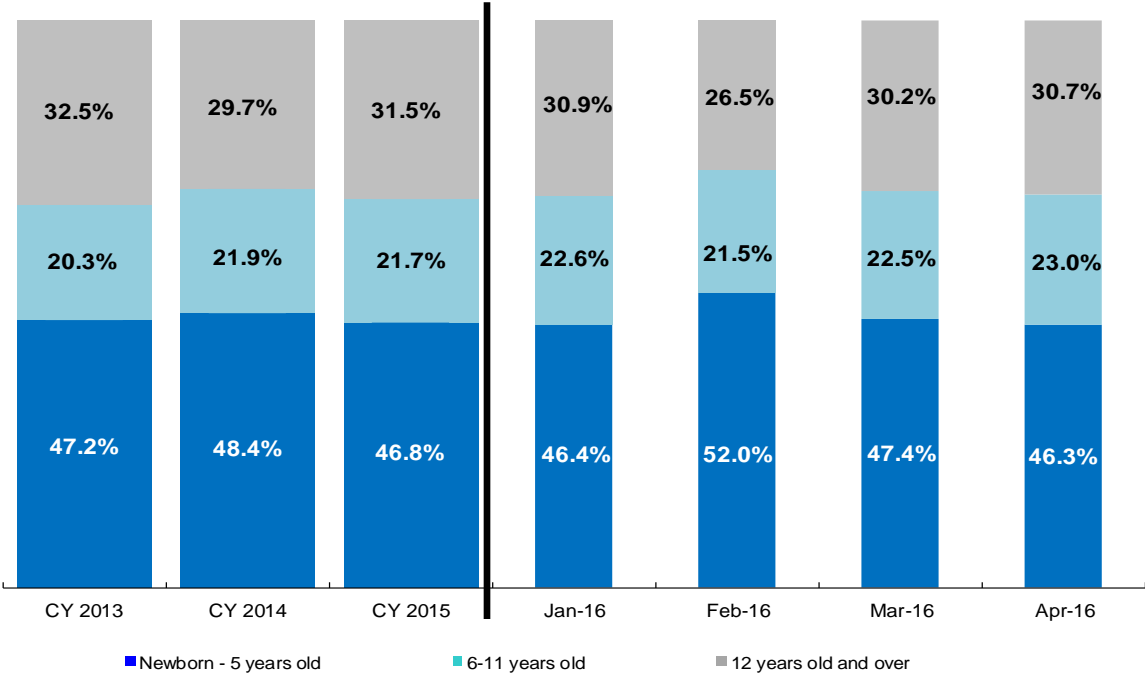
April 2015 – April 2016



	Apr 2015	May 2015	Jun 2015	Jul 2015	Aug 2015	Sep 2015	Oct 2015	Nov 2015	Dec 2015	Jan 2016	Feb 2016	Mar 2016	Apr 2016
Number of Placements	372	334	332	334	315	273	337	253	269	288	296	308	290

Placements* by Age

CY 2013 - April 2016

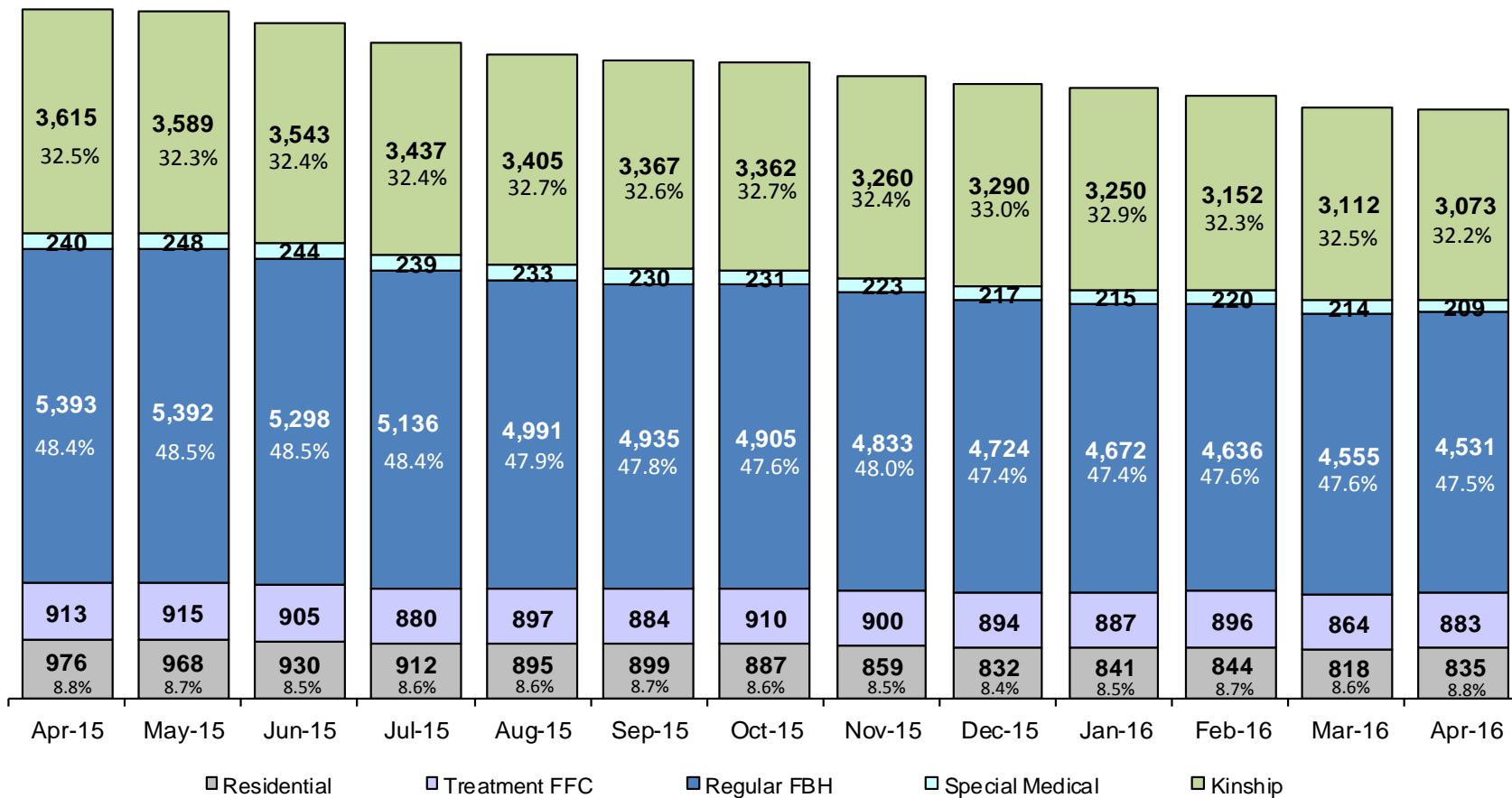


	CY 2013	CY 2014	CY 2015	Jan 2016	Feb 2016	Mar 2016	Apr 2016
Placements (without JDs)	4,170	3,983	3,632	268	275	285	270

*Excludes JD placements.

Children in Foster Care *

April 2015 – April 2016 (end of month)

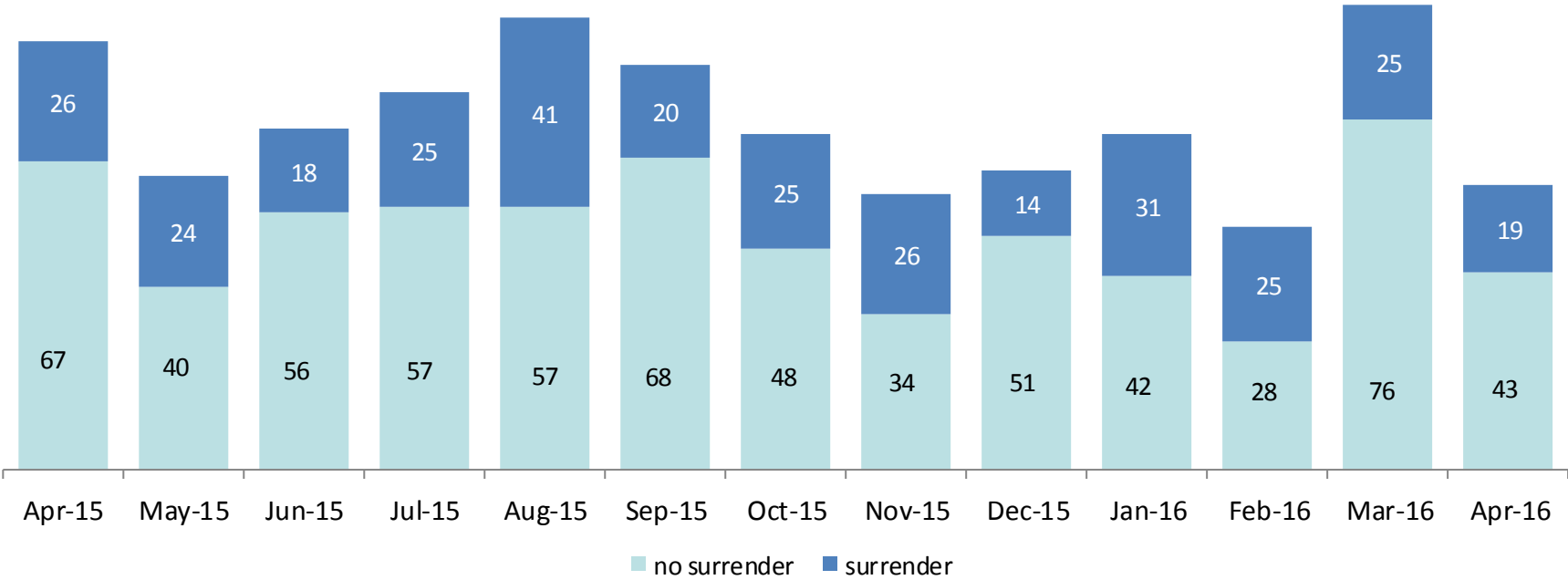


	Apr 2015	May 2015	Jun 2015	Jul 2015	Aug 2015	Sep 2015	Oct 2015	Nov 2015	Dec 2015	Jan 2016	Feb 2016	Mar 2016	Apr 2016
Number in Foster Care	11,137	11,112	10,920	10,604	10,421	10,315	10,295	10,075	9,957	9,865	9,748	9,563	9,531

*Excludes JD placements and includes children in 24 hour care and approximately 200 young children who are living in foster homes or residential care facilities with their mothers who are in foster care (8D children).

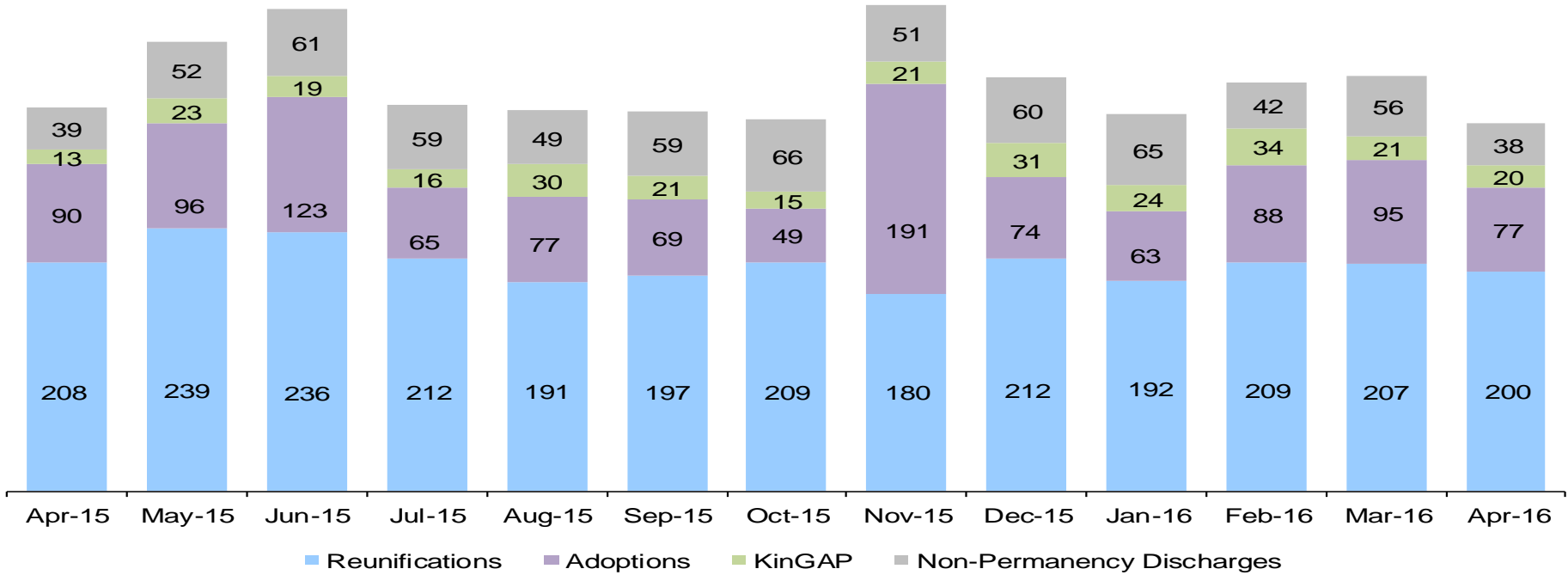
Children Freed for Adoption, Surrender by at Least One Parent

March 2015 – March 2016



	Apr 2015	May 2015	Jun 2015	Jul 2015	Aug 2015	Sep 2015	Oct 2015	Nov 2015	Dec 2015	Jan 2016	Feb 2016	Mar 2016	Apr 2016
Number Freed for Adoption	79	93	64	74	82	98	87	73	63	73	53	101	62

Permanency and Non-Permanency* Discharges from Foster Care** April 2015 – April 2016



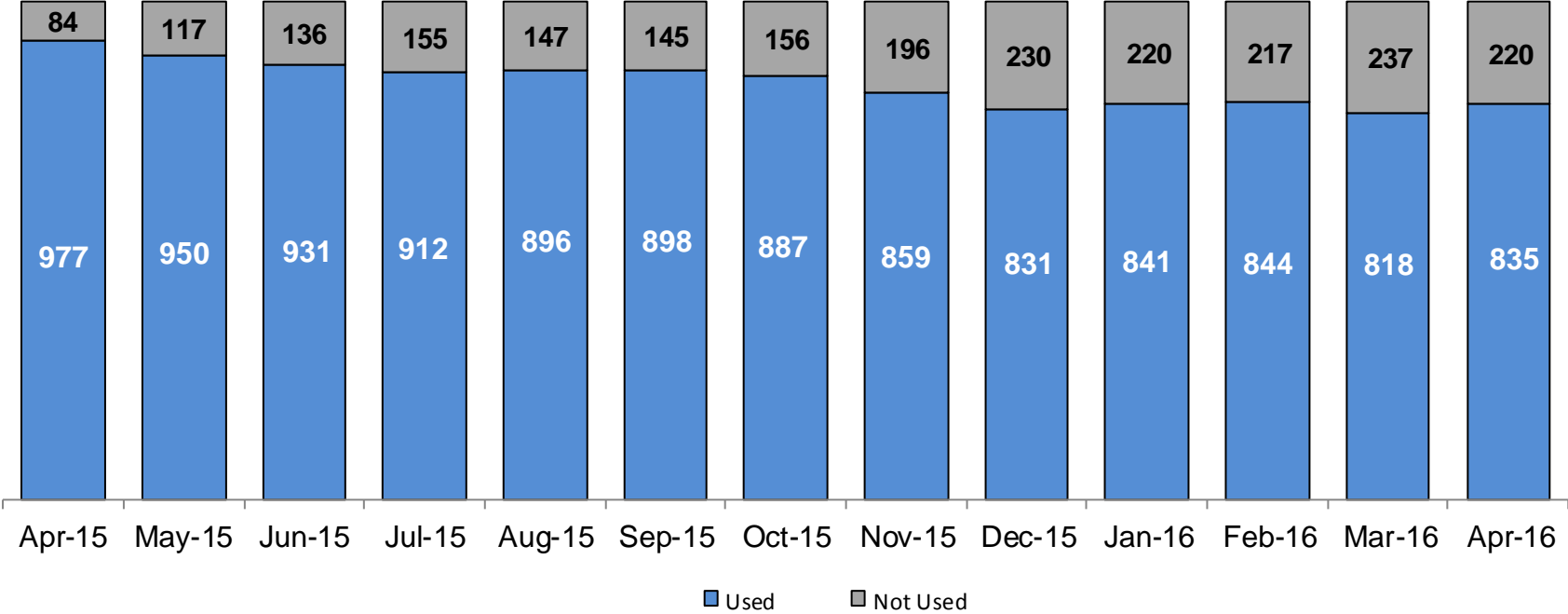
	Apr 2015	May 2015	Jun 2015	Jul 2015	Aug 2015	Sep 2015	Oct 2015	Nov 2015	Dec 2015	Jan 2016	Feb 2016	Mar 2016	Apr 2016
Number of Discharges	350	410	439	352	347	346	339	443	377	344	373	379	335

*Non-permanency discharges include AWOL, APPLA , other discharge destinations such as psychiatric institutions and correctional facilities and discharges with unspecified destinations.

**Excludes discharges of youth who entered care as a JD.

Residential Care Capacity and Utilization

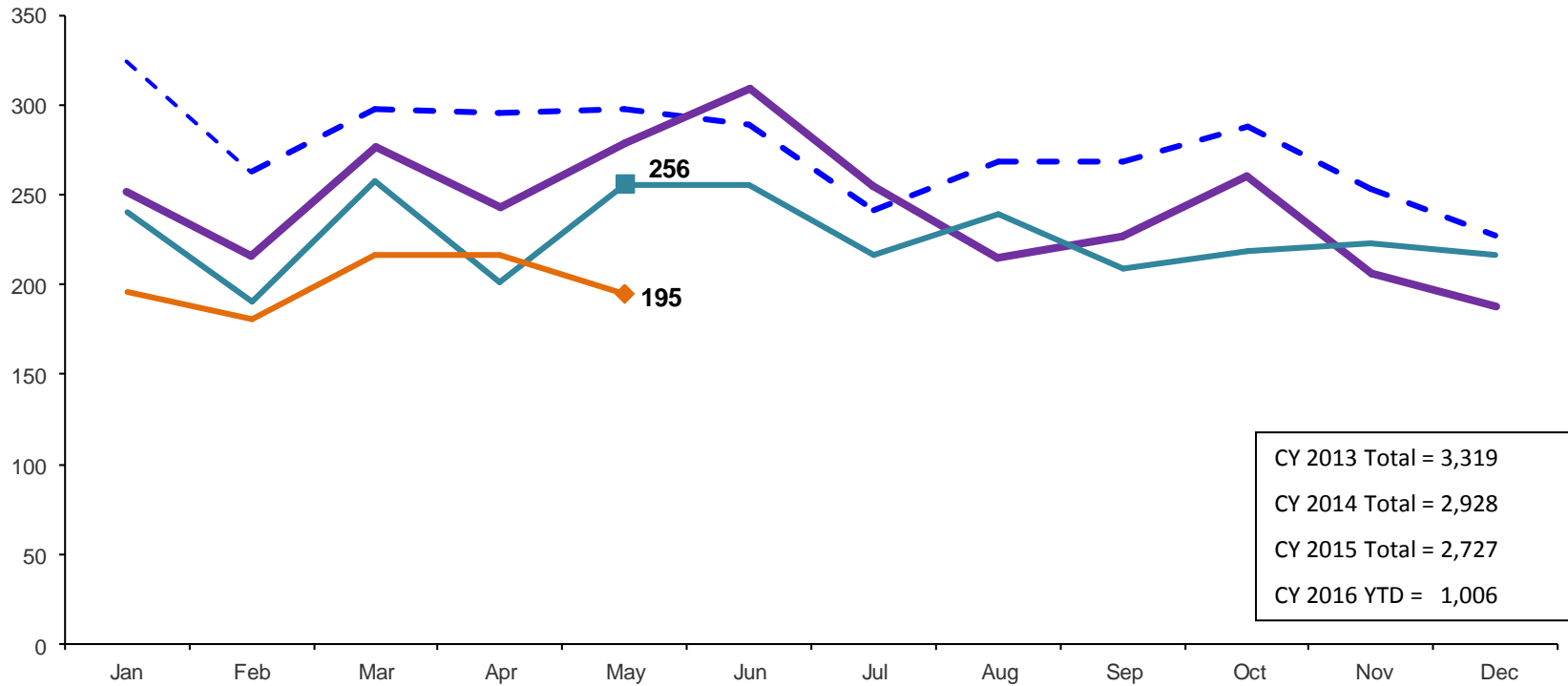
April 2015 – April 2016



	Apr 2015	May 2015	Jun 2015	Jul 2015	Aug 2015	Sep 2015	Oct 2015	Nov 2015	Dec 2015	Jan 2016	Feb 2016	Mar 2016	Apr 2016
Capacity	1,061	1,067	1,067	1,067	1,043	1,043	1,043	1,055	1,061	1,061	1,061	1,055	1,055

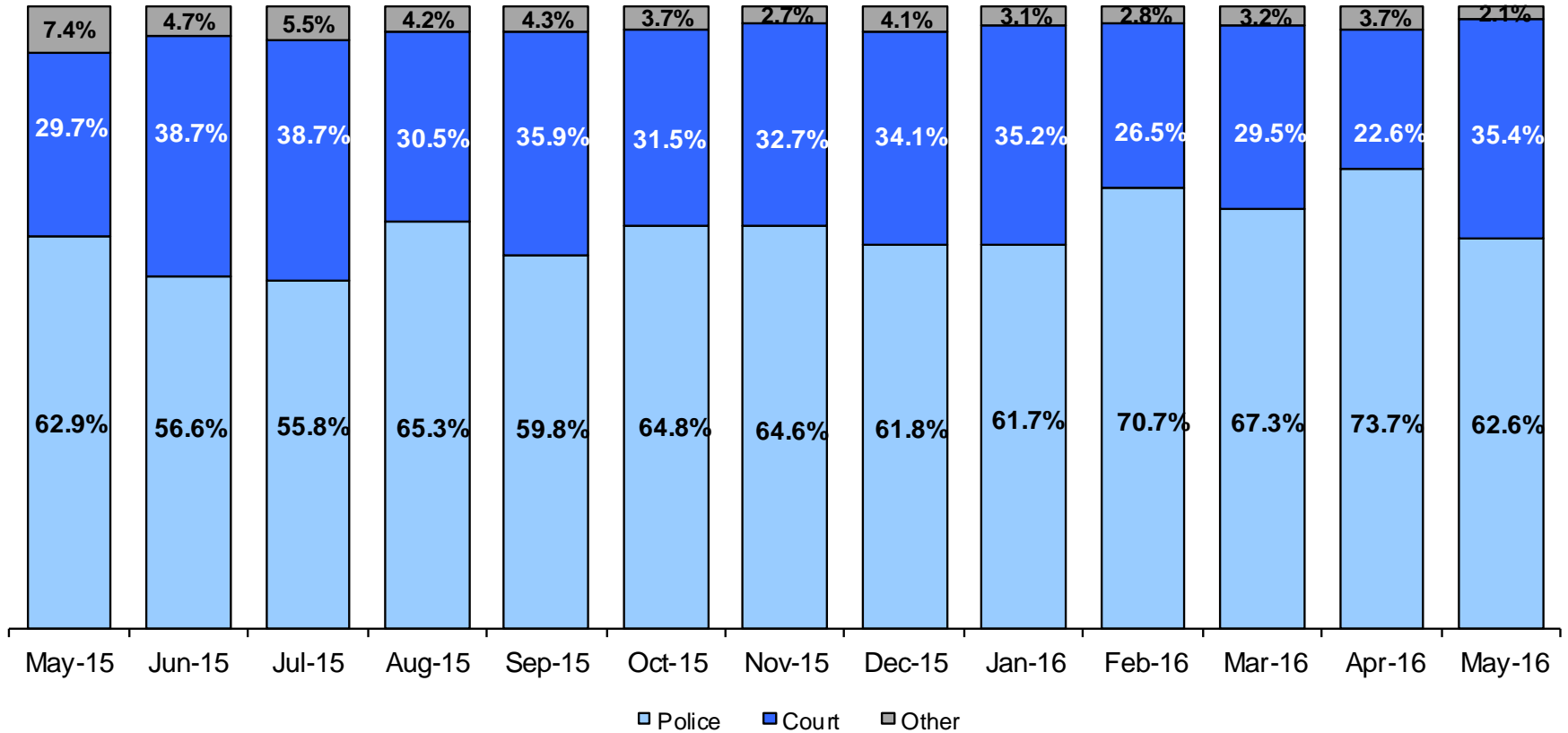
Total Monthly Admissions to Detention

January 2013 – May 2016 (Monthly Total)



Admit Authority on Admissions

May 2015 – May 2016 (Monthly Total)



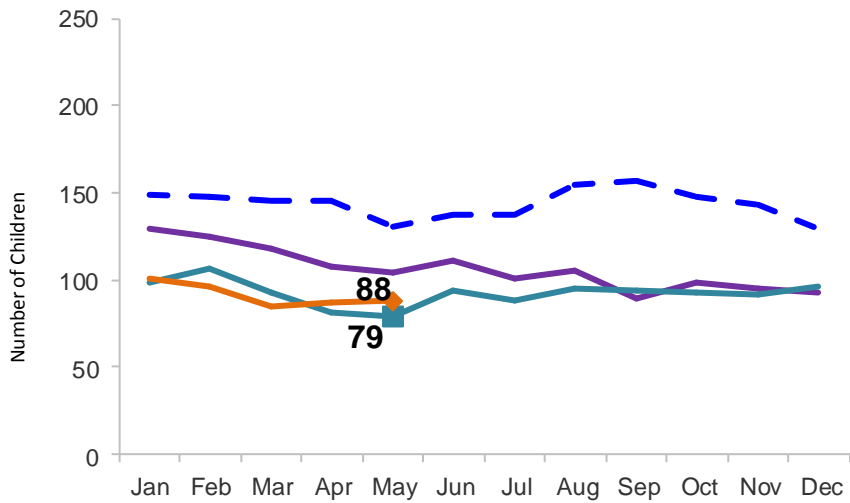
	May 2015	Jun 2015	July 2015	Aug 2015	Sep 2015	Oct 2015	Nov 2015	Dec 2015	Jan 2016	Feb 2016	Mar 2016	Apr 2016	May 2016
Number of Admissions	256	256	217	239	209	219	223	217	196	181	217	217	195

Note: Other Admit Authority includes the Sheriff Department, Department of Corrections and ACS.

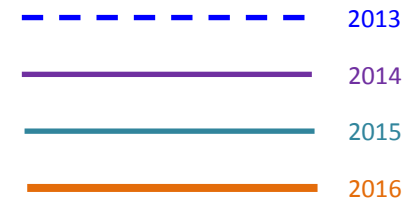
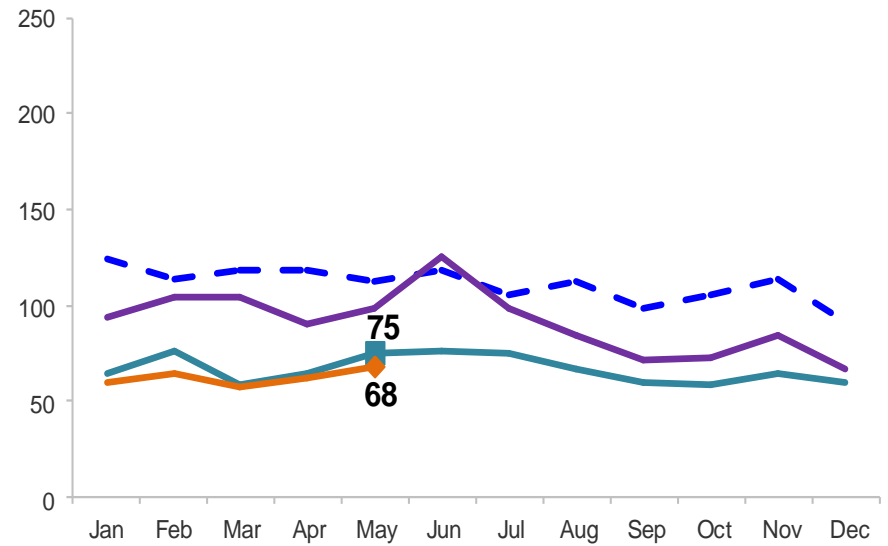
Monthly Average Daily Population

January 2013 – May 2016

Secure Detention

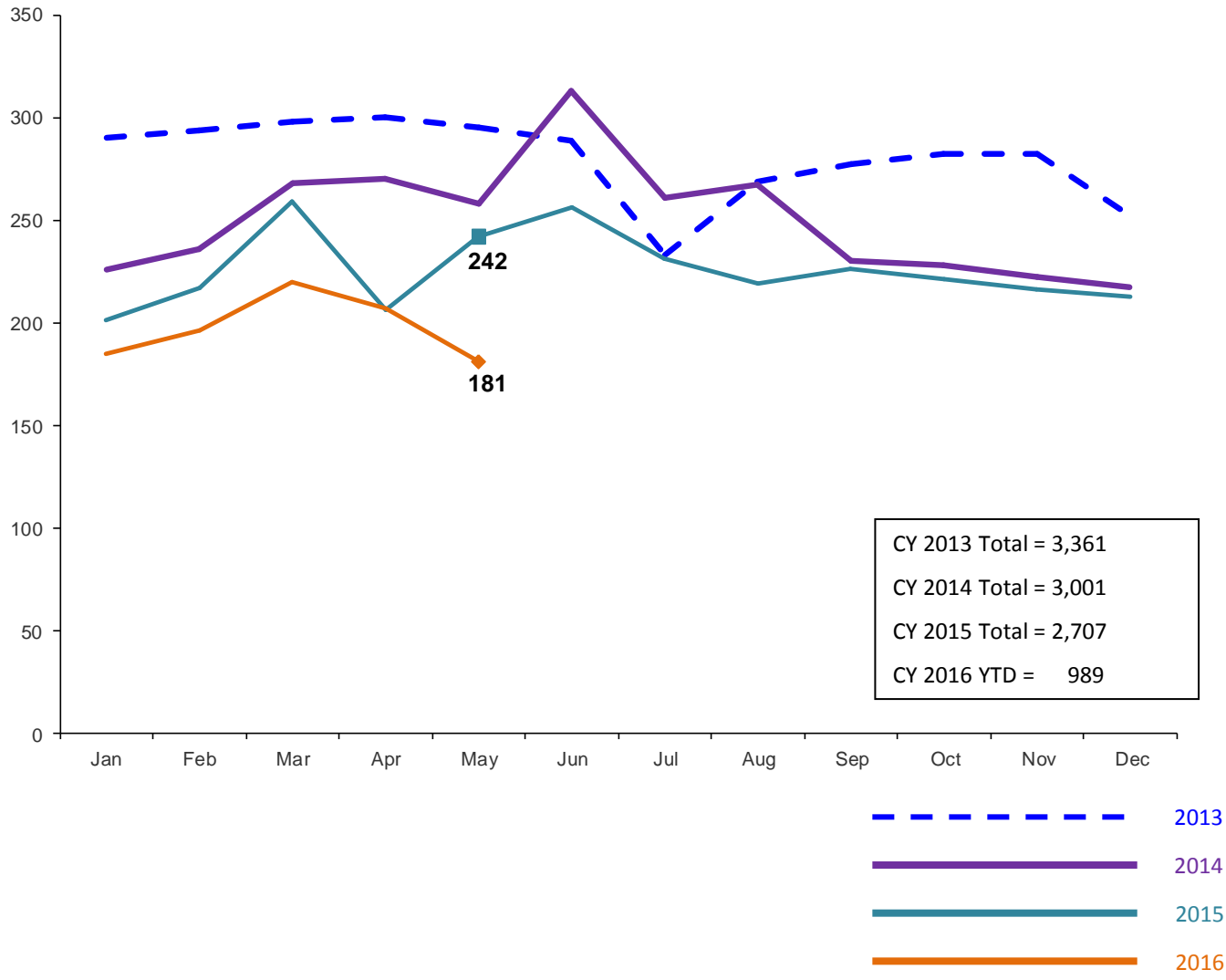


Non-Secure Detention



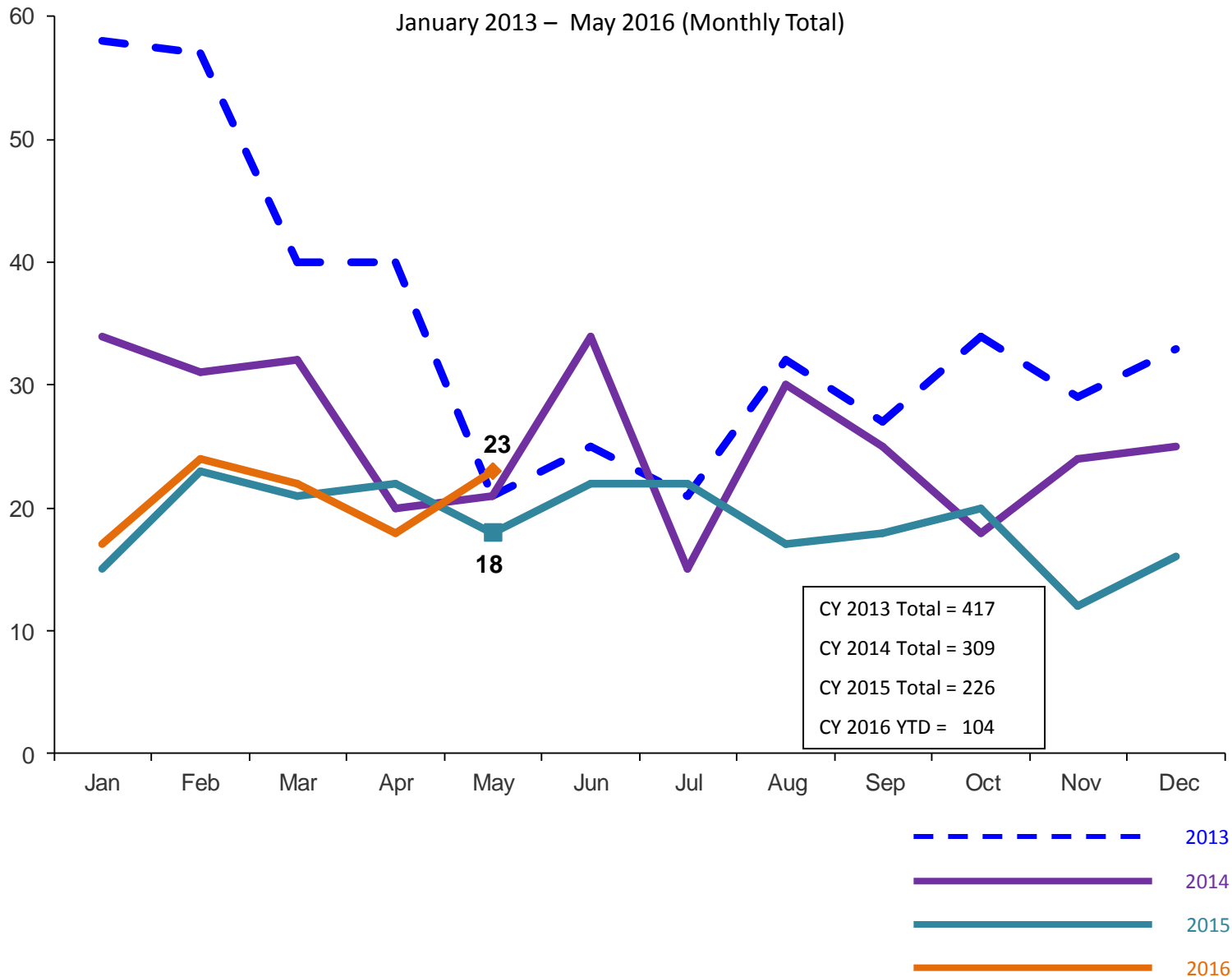
Total Monthly Releases from Detention

January 2013 – May 2016 (Monthly Total)



Close to Home Intakes*

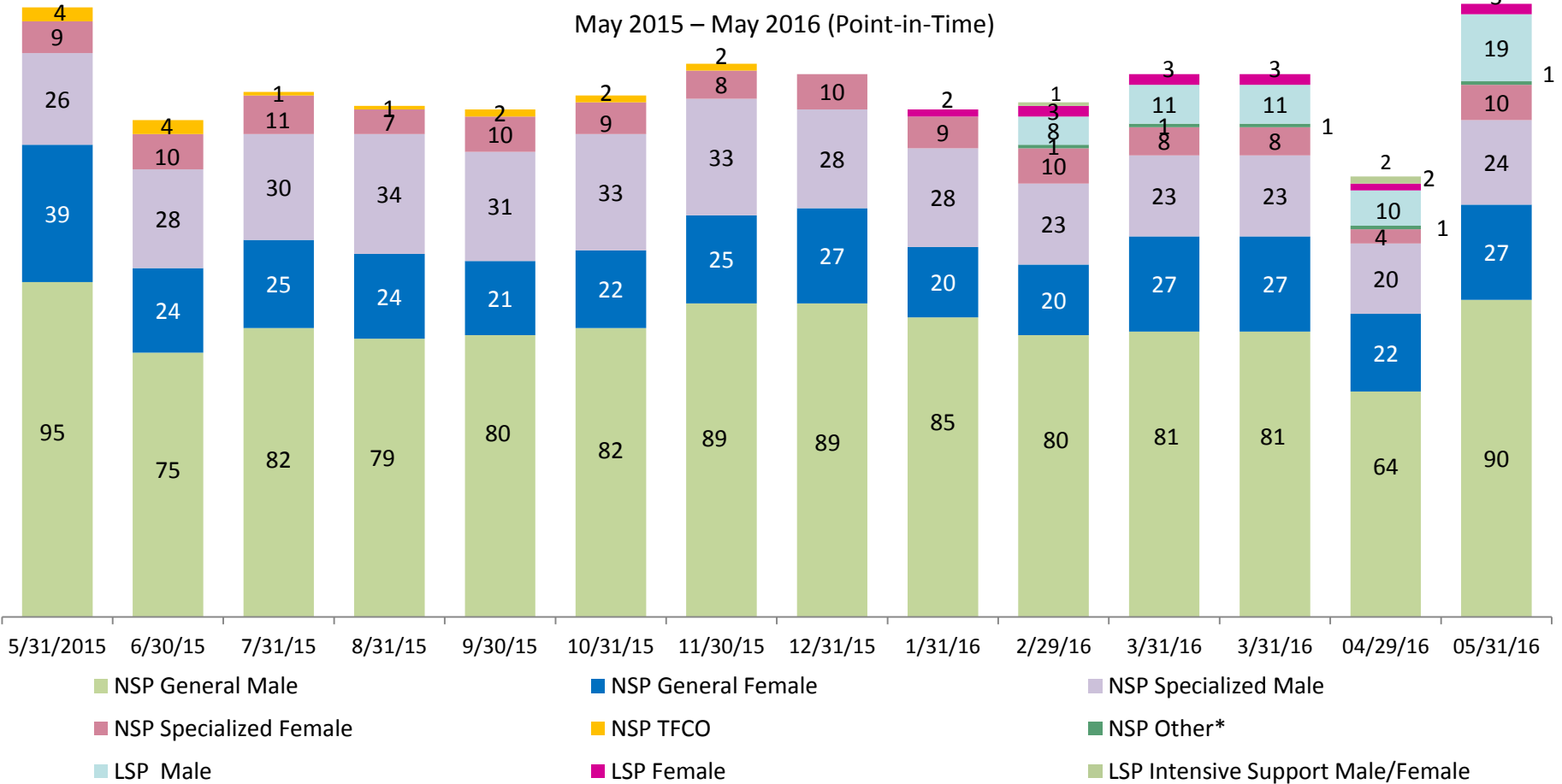
January 2013 – May 2016 (Monthly Total)



*Beginning in December 2015 Close to Home Intakes include LSP as well as NSP.

Close to Home Placement, in 24-hour Care

May 2015 – May 2016 (Point-in-Time)

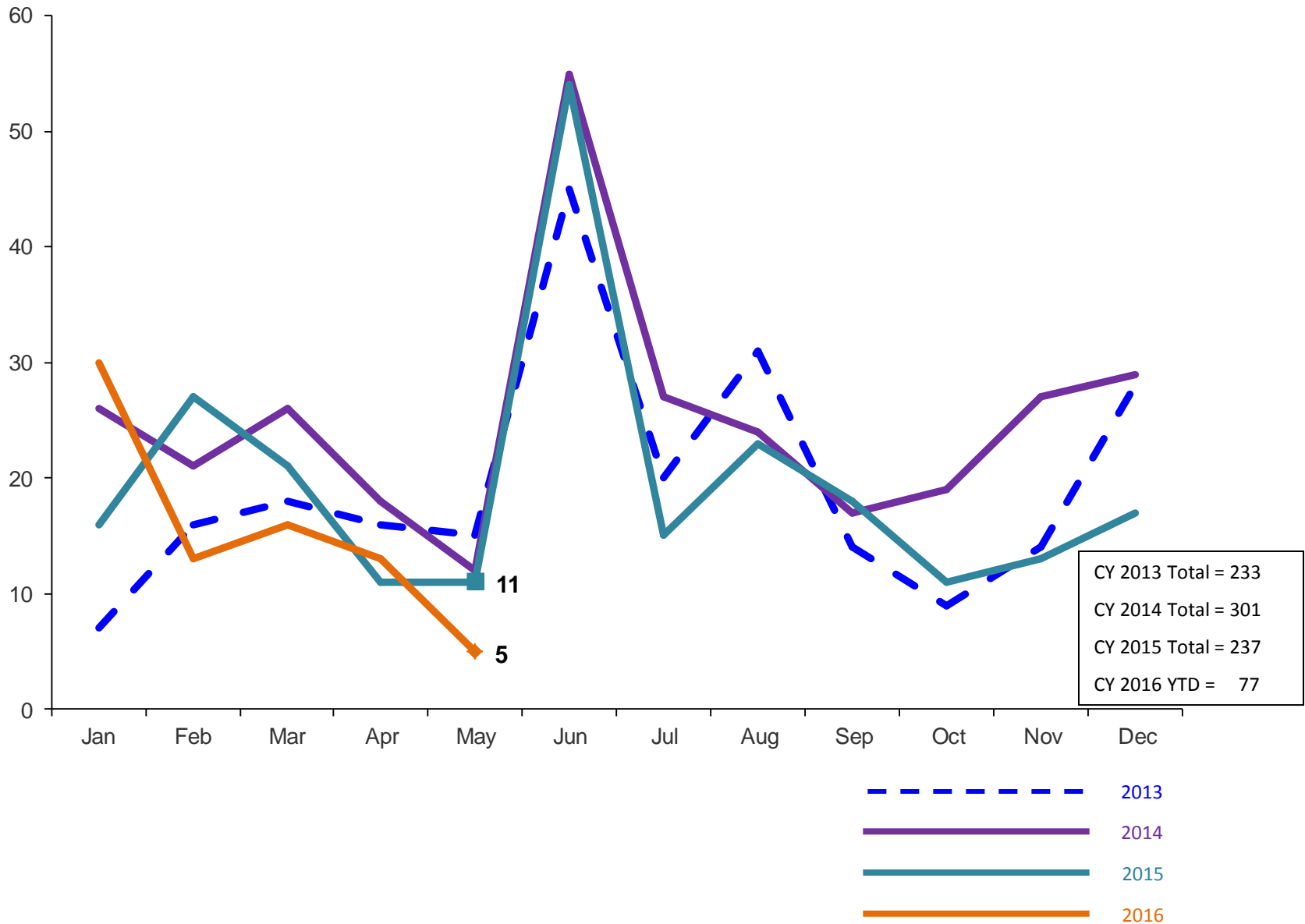


Number in Placement													
	5/31/15	6/30/15	7/31/15	8/31/15	9/30/15	10/31/15	11/30/15	12/31/15	1/31/16	2/29/16	3/31/16	4/29/16	5/31/16
NSP	173	141	149	145	144	148	157	154	142	134	140	111	152
LSP	0	0	0	0	0	0	0	2	6	12	14	14	22

*NSP Other includes youth in child welfare placements.

Releases from Close to Home Placement to Aftercare

February 2013 – May 2016 (Monthly Total)



Appendix

Figure 1: SCR Intakes by Borough, MAR 15 – MAY 15 and MAR 16 – MAY 16

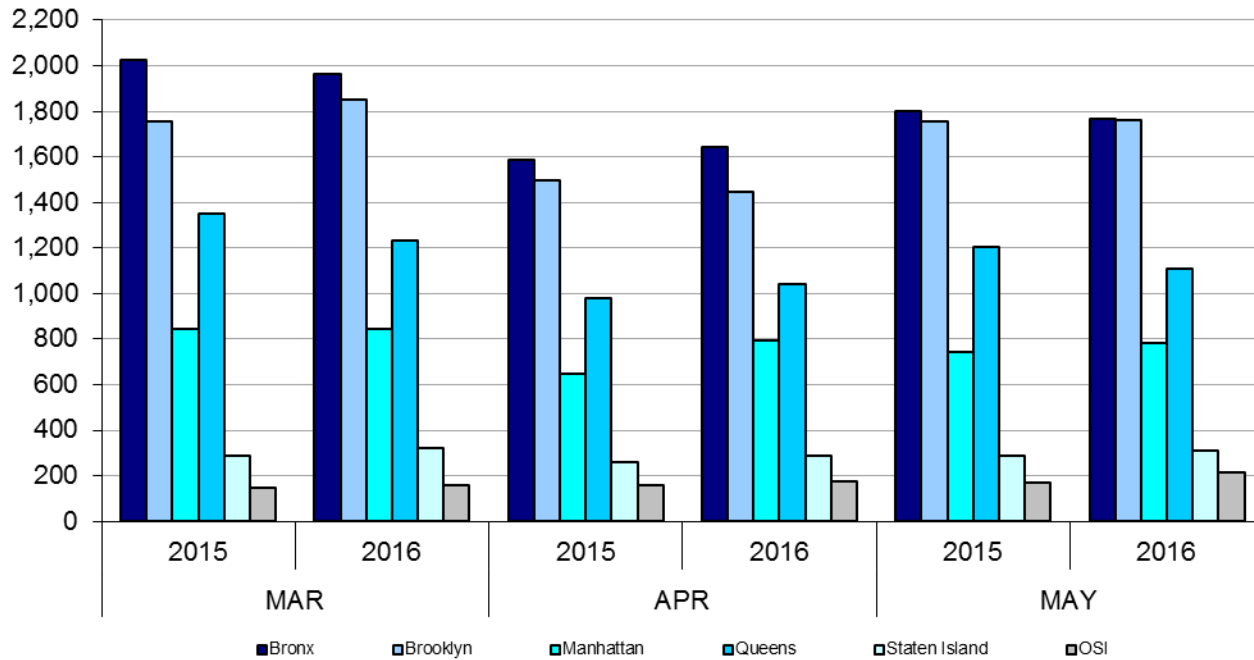


Table 1 - SCR Intake Changes by Borough, MAR 15 – MAY 15 and MAR 16 – MAY 16

Month	Year	Bronx	Brooklyn	Manhattan	Queens	Staten Island	OSI	Other	Total
MAR	2015	2,025	1,757	845	1,351	288	149	130	6,545
	2016	1,961	1,854	847	1,234	323	159	135	6,513
	% Change	-3.2%	5.5%	0.2%	-8.7%	12.2%	6.7%	3.8%	-0.5%
APR	2015	1,589	1,497	649	979	257	157	133	5,261
	2016	1,645	1,448	796	1,044	286	174	159	5,552
	% Change	3.5%	-3.3%	22.7%	6.6%	11.3%	10.8%	19.5%	5.5%
MAY	2015	1,800	1,757	746	1,205	287	172	156	6,123
	2016	1,767	1,759	782	1,110	311	217	154	6,100
	% Change	-1.8%	0.1%	4.8%	-7.9%	8.4%	26.2%	-1.3%	-0.4%
Total	2015	5,414	5,011	2,240	3,535	832	478	419	17,929
	2016	5,373	5,061	2,425	3,388	920	550	448	18,165
	% Change	-0.8%	1.0%	8.3%	-4.2%	10.6%	15.1%	6.9%	1.3%

Figure 2: Citywide SCR Intakes by Reporter Group, MAR 15 – MAY 15 and MAR 16 – MAY 16

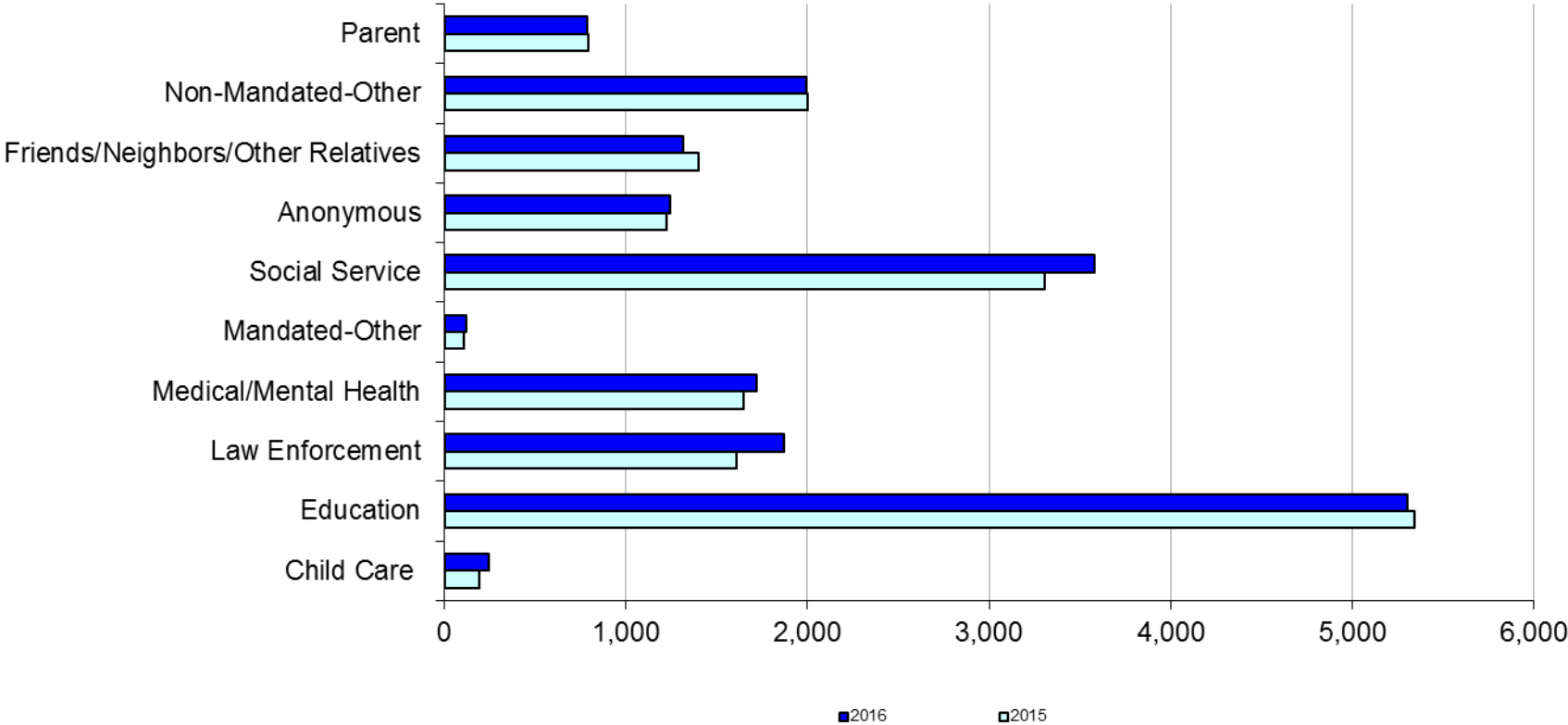
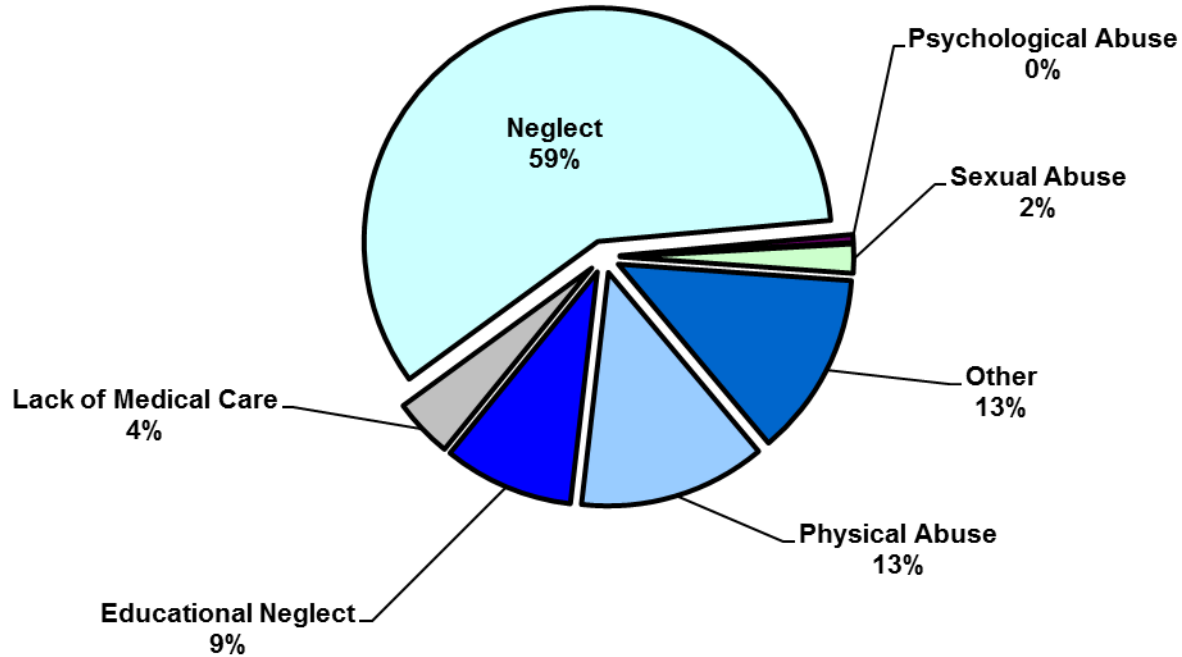


Table 2 - SCR Intakes by Reporter Group, MAR 15 – MAY 15 and MAR 16 – MAY 16

Year	Child Care/ Substitute Care Personnel	Educational Personnel	Law Enforcement	Medical/ Mental Health Personnel	Mandated- Other	Social Service Personnel	Anonymous	Friends/ Neighbors/ Other Relatives	Non- Mandated- Other	Parent	Foster Parent	Total
Bronx												
2015	52	1,700	400	478	38	1,103	385	401	601	212	0	5,370
2016	73	1,672	446	493	28	1,115	320	388	632	211	0	5,378
% Change	40.4%	-1.6%	11.5%	3.1%	-26.3%	1.1%	-16.9%	-3.2%	5.2%	-0.5%	--	0.1%
Brooklyn												
2015	44	1,522	463	436	28	857	368	412	541	193	1	4,865
2016	60	1,523	605	471	34	946	357	368	519	177	1	5,061
% Change	36.4%	0.1%	30.7%	8.0%	21.4%	10.4%	-3.0%	-10.7%	-4.1%	-8.3%	0.0%	4.0%
Manhattan												
2015	22	564	260	216	13	440	150	193	263	101	1	2,223
2016	27	584	313	265	26	456	196	180	280	96	2	2,425
% Change	22.7%	3.5%	20.4%	22.7%	100.0%	3.6%	30.7%	-6.7%	6.5%	-5.0%	100.0%	9.1%
Queens												
2015	27	1,204	305	332	19	612	192	261	339	140	0	3,431
2016	28	1,115	312	295	17	685	231	243	323	138	1	3,388
% Change	3.7%	-7.4%	2.3%	-11.1%	-10.5%	11.9%	20.3%	-6.9%	-4.7%	-1.4%	--	-1.3%
Staten Island												
2015	9	267	68	88	3	106	81	86	87	39	1	835
2016	9	322	80	85	5	126	85	83	86	39	0	920
% Change	0.0%	20.6%	17.6%	-3.4%	66.7%	18.9%	4.9%	-3.5%	-1.1%	0.0%	-100.0%	10.2%
OSI												
2015	32	42	19	50	8	74	31	17	127	80	4	484
2016	39	48	26	49	7	120	33	32	105	87	2	548
% Change	21.9%	14.3%	36.8%	-2.0%	-12.5%	62.2%	6.5%	88.2%	-17.3%	8.8%	-50.0%	13.2%
Other												
2015	3	42	96	48	1	114	17	27	40	28	0	416
2016	5	40	85	60	2	134	18	21	47	38	0	450
% Change	66.7%	-4.8%	-11.5%	25.0%	100.0%	17.5%	5.9%	-22.2%	17.5%	35.7%	--	8.2%
Citywide												
2015	189	5,341	1,611	1,648	110	3,306	1,224	1,397	1,998	793	7	17,624
2016	241	5,304	1,867	1,718	119	3,582	1,240	1,315	1,992	786	6	18,170
% Change	27.5%	-0.7%	15.9%	4.2%	8.2%	8.3%	1.3%	-5.9%	-0.3%	-0.9%	-14.3%	3.1%

Figure 3: SCR Allegations, MAR 16 – MAY 16



Total Allegations = 44,892

Allegations are grouped as follows: Physical Abuse - burn, fatality, fracture, choking, twisting, shaking, excessive corporal punishment, internal injuries, lacerations, bruises, welts, poisoning, noxious substances; Educational Neglect – educational neglect; Lack of Medical Care – lack of medical care; Neglect - inadequate guardianship, inadequate food, clothing, shelter, lack of supervision, malnutrition, failure to thrive, swelling, dislocations, sprains; Psychological Abuse - isolation, emotional neglect; Sexual Abuse – sexual abuse; and Other -parental drug use, child drug use, abandonment, inappropriate custodial conduct.

Table 3 - SCR Allegations, MAR 15 - MAY 15 and MAR 16 – MAY 16

Year	Physical Abuse	Educational Neglect	Lack of Medical Care	Neglect	Psychological Abuse	Sexual Abuse	Other	Total
Bronx								
2015	1,602	1,608	631	7,806	87	254	1,670	13,658
2016	1,682	1,490	578	8,001	64	248	1,644	13,707
% Change	5.0%	-7.3%	-8.4%	2.5%	-26.4%	-2.4%	-1.6%	0.4%
Brooklyn								
2015	1,610	1,331	437	7,339	70	248	1,464	12,499
2016	1,679	1,273	527	7,484	91	249	1,552	12,855
% Change	4.3%	-4.4%	20.6%	2.0%	30.0%	0.4%	6.0%	2.8%
Manhattan								
2015	547	474	213	2744	29	98	569	4,674
2016	589	458	200	2780	24	103	638	4,792
% Change	7.7%	-3.4%	-6.1%	1.3%	-17.2%	5.1%	12.1%	2.5%
Queens								
2015	1,181	637	349	4,651	71	148	1,071	8,108
2016	1,143	550	339	4,604	51	173	1,054	7,914
% Change	-3.2%	-13.7%	-2.9%	-1.0%	-28.2%	16.9%	-1.6%	-2.4%
Staten Island								
2015	232	196	82	1,468	15	39	421	2,453
2016	251	195	86	1,425	9	29	399	2,394
% Change	8.2%	-0.5%	4.9%	-2.9%	-40.0%	-25.6%	-5.2%	-2.4%
OSI								
2015	321	69	72	1,241	14	49	140	1,906
2016	352	47	65	1,386	6	63	216	2,135
% Change	9.7%	-31.9%	-9.7%	11.7%	-57.1%	28.6%	54.3%	12.0%
Other								
2015	105	47	34	576	4	18	230	1,014
2016	118	35	47	626	4	37	228	1,095
% Change	12.4%	-25.5%	38.2%	8.7%	0.0%	105.6%	-0.9%	8.0%
Citywide								
2015	5,598	4,362	1,818	25,825	290	854	5,565	44,312
2016	5,814	4,048	1,842	26,306	249	902	5,731	44,892
% Change	3.9%	-7.2%	1.3%	1.9%	-14.1%	5.6%	3.0%	1.3%

**TABLE 4 - Purchased Preventive Cases
Opened and Closed
January 2012 to May 2016**

Month	Opened Cases	Closed Cases
2013		
Jan-13	753	884
Feb-13	742	916
Mar-13	801	1,171
Apr-13	785	988
May-13	682	1,337
Jun-13	775	780
Jul-13	802	1,004
Aug-13	777	1,084
Sep-13	727	724
Oct-13	780	765
Nov-13	725	685
Dec-13	946	552
2014		
Jan-14	841	640
Feb-14	885	679
Mar-14	998	874
Apr-14	919	896
May-14	919	888
Jun-14	890	762
Jul-14	973	1,077
Aug-14	826	943
Sep-14	841	705
Oct-14	835	819
Nov-14	677	638
Dec-14	1,062	721
2015		
Jan-15	728	716
Feb-15	902	590
Mar-15	1,122	686
Apr-15	977	743
May-15	914	842
Jun-15	1,068	797
Jul-15	899	1,070
Aug-15	893	891
Sep-15	764	847
Oct-15	749	772
Nov-15	746	652
Dec-15	1,013	707
2016		
Jan-16	792	668
Feb-16	897	667
Mar-16	1,024	869
Apr-16	827	794
May-16	878	709

**Table 5 - Referrals to Purchased Preventive Services by Source
January 2012 to May 2016**

Month	Total Referrals	Division of Child Protection	Foster Care Agencies	PPRS Transfer	School	Self	Other Sources*
2013							
Jan-13	1,474	74.1%	1.2%	7.3%	1.2%	3.7%	12.5%
Feb-13	1,308	75.8%	1.1%	8.0%	1.6%	2.9%	10.6%
Mar-13	1,270	73.5%	1.2%	6.7%	2.4%	3.9%	12.3%
Apr-13	1,421	77.9%	0.8%	7.4%	0.9%	3.0%	10.1%
May-13	1,320	68.4%	0.5%	10.2%	1.5%	3.8%	15.5%
Jun-13	953	69.2%	1.2%	9.4%	2.6%	5.0%	12.6%
Jul-13	1,014	66.3%	1.9%	14.4%	1.6%	3.9%	11.9%
Aug-13	1,212	70.5%	0.7%	11.8%	0.7%	4.7%	11.6%
Sep-13	1,262	64.0%	2.1%	11.3%	1.7%	6.7%	14.2%
Oct-13	1,319	61.0%	1.1%	9.0%	2.9%	7.5%	18.5%
Nov-13	1,249	55.9%	1.6%	10.5%	4.6%	9.2%	18.3%
Dec-13	1,464	62.2%	1.2%	8.2%	2.3%	9.2%	17.0%
CY 2013	15,266	68.3%	1.2%	9.4%	2.0%	5.3%	13.8%
2014							
Jan-14	1,537	70.0%	1.2%	6.6%	2.3%	5.8%	14.2%
Feb-14	1,334	69.7%	0.8%	8.4%	1.7%	5.5%	13.9%
Mar-14	1,612	70.0%	1.4%	8.6%	1.6%	5.3%	13.1%
Apr-14	1,525	70.2%	0.9%	7.6%	2.1%	3.7%	15.4%
May-14	1,580	74.4%	0.7%	8.3%	1.4%	5.2%	10.0%
Jun-14	1,550	78.6%	1.2%	6.3%	1.2%	3.2%	9.4%
Jul-14	1,659	79.6%	1.5%	6.7%	0.4%	4.2%	7.6%
Aug-14	1,395	72.2%	1.6%	10.8%	0.3%	4.9%	10.3%
Sep-14	1,597	49.4%	1.5%	7.6%	0.3%	4.5%	36.8%
Oct-14	1,634	68.2%	1.9%	10.0%	1.2%	4.6%	14.1%
Nov-14	1,311	66.4%	0.9%	14.3%	2.4%	3.9%	12.1%
Dec-14	1,785	71.1%	1.4%	8.8%	2.9%	4.8%	11.0%
CY 2014	18,519	70.1%	1.3%	8.6%	1.5%	4.6%	14.0%
2015							
Jan-15	1,430	74.4%	1.6%	8.7%	1.8%	3.8%	9.7%
Feb-15	1,538	76.5%	0.8%	8.1%	1.8%	4.7%	8.2%
Mar-15	1,798	74.6%	0.9%	7.3%	1.6%	4.8%	10.8%
Apr-15	1,719	78.2%	1.3%	7.2%	0.6%	3.5%	9.1%
May-15	1,561	77.2%	1.0%	5.1%	1.5%	4.5%	10.8%
Jun-15	1,716	77.4%	1.1%	7.7%	1.2%	3.5%	9.1%
Jul-15	1,511	79.6%	0.9%	7.2%	0.3%	3.8%	8.2%
Aug-15	1,418	79.3%	2.2%	7.8%	0.2%	3.1%	7.5%
Sep-15	1,209	72.1%	2.8%	10.4%	0.5%	5.5%	8.6%
Oct-15	1,338	70.4%	1.9%	8.3%	2.1%	5.8%	11.6%
Nov-15	1,220	68.2%	1.8%	9.6%	1.4%	6.2%	12.8%
Dec-15	1,526	73.5%	1.6%	8.0%	2.0%	5.0%	9.9%
2016							
Jan-16	1,370	73.6%	1.6%	8.2%	0.7%	5.4%	10.6%
Feb-16	1,436	75.8%	2.2%	7.8%	1.0%	3.8%	9.3%
Mar-16	1,557	72.0%	2.1%	8.8%	1.0%	4.6%	11.4%
Apr-16	1,378	76.1%	1.5%	7.4%	1.5%	3.5%	10.0%
May-16	1,386	73.4%	1.4%	8.7%	1.0%	4.7%	10.8%

*Other Community Sources includes the Department of Homeless Services, Family Court, FAP, Hospitals and Medical facilities, the NYC Housing Authority, PINS/DAS, Probation, and Sponsor Agencies.