

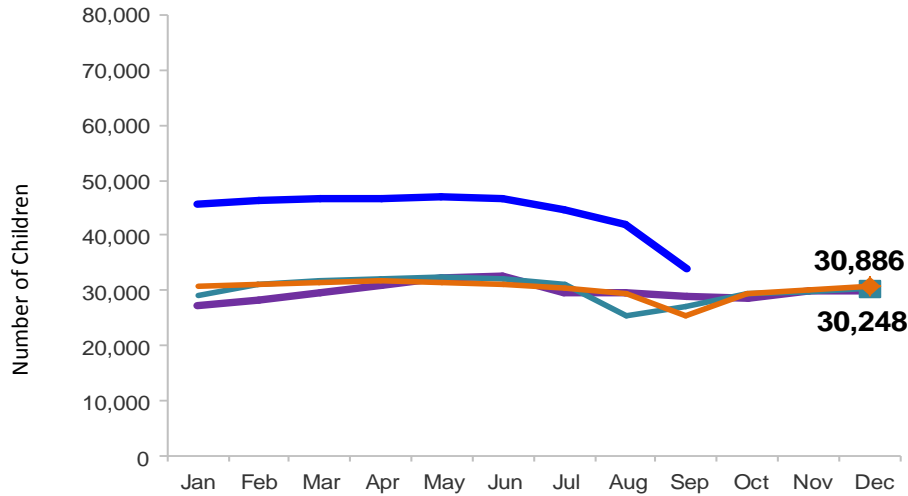


Flash

January 2016

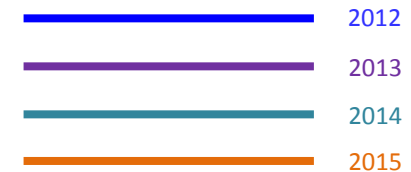
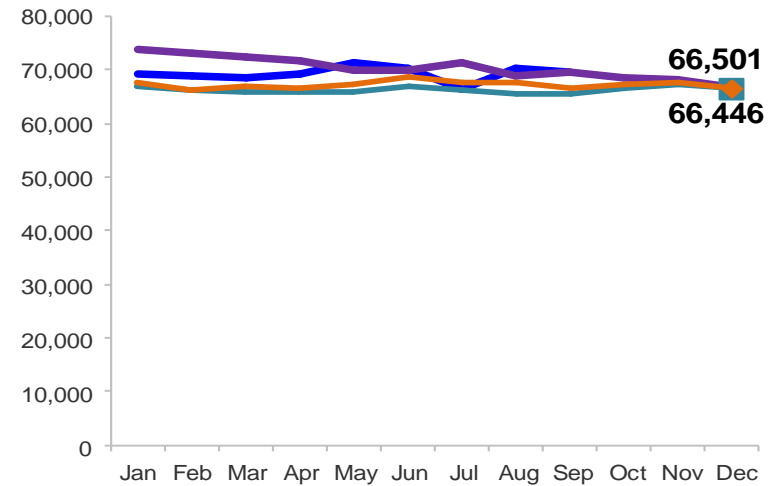
Children Enrolled in Contracted EarlyLearn Programs

January 2012 – December 2015 (End of Month)



Children Using Vouchers for Child Care

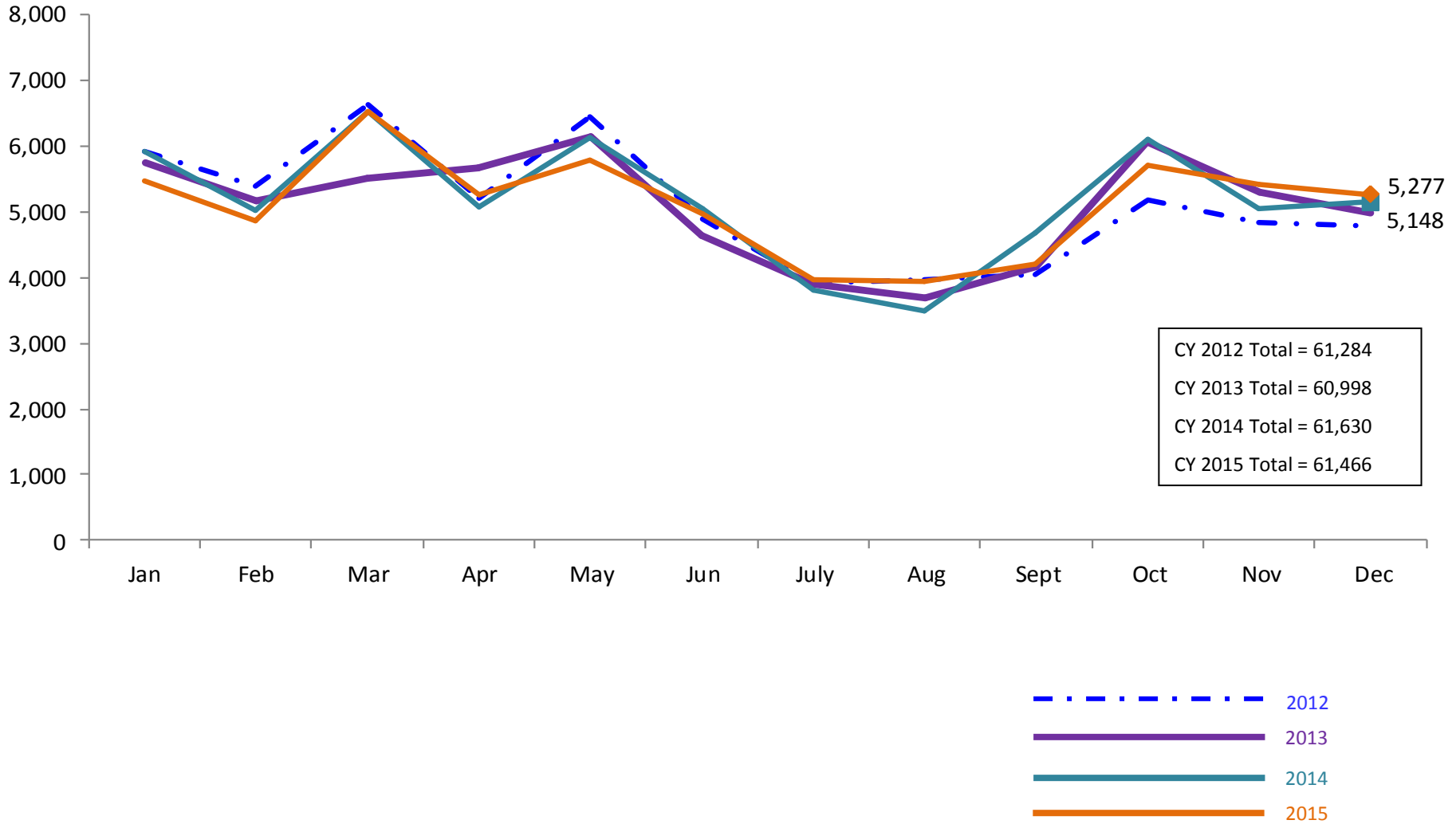
January 2012 – December 2015 (End of Month)



Note: Beginning October 1, 2012 ACS converted its early care and education system to a new model, EarlyLearn NYC. Enrollment data for the transitional months of October – December 2012 are not available because contractors were in the midst of implementing the data collection systems.

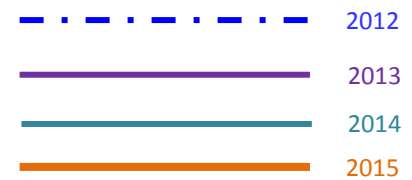
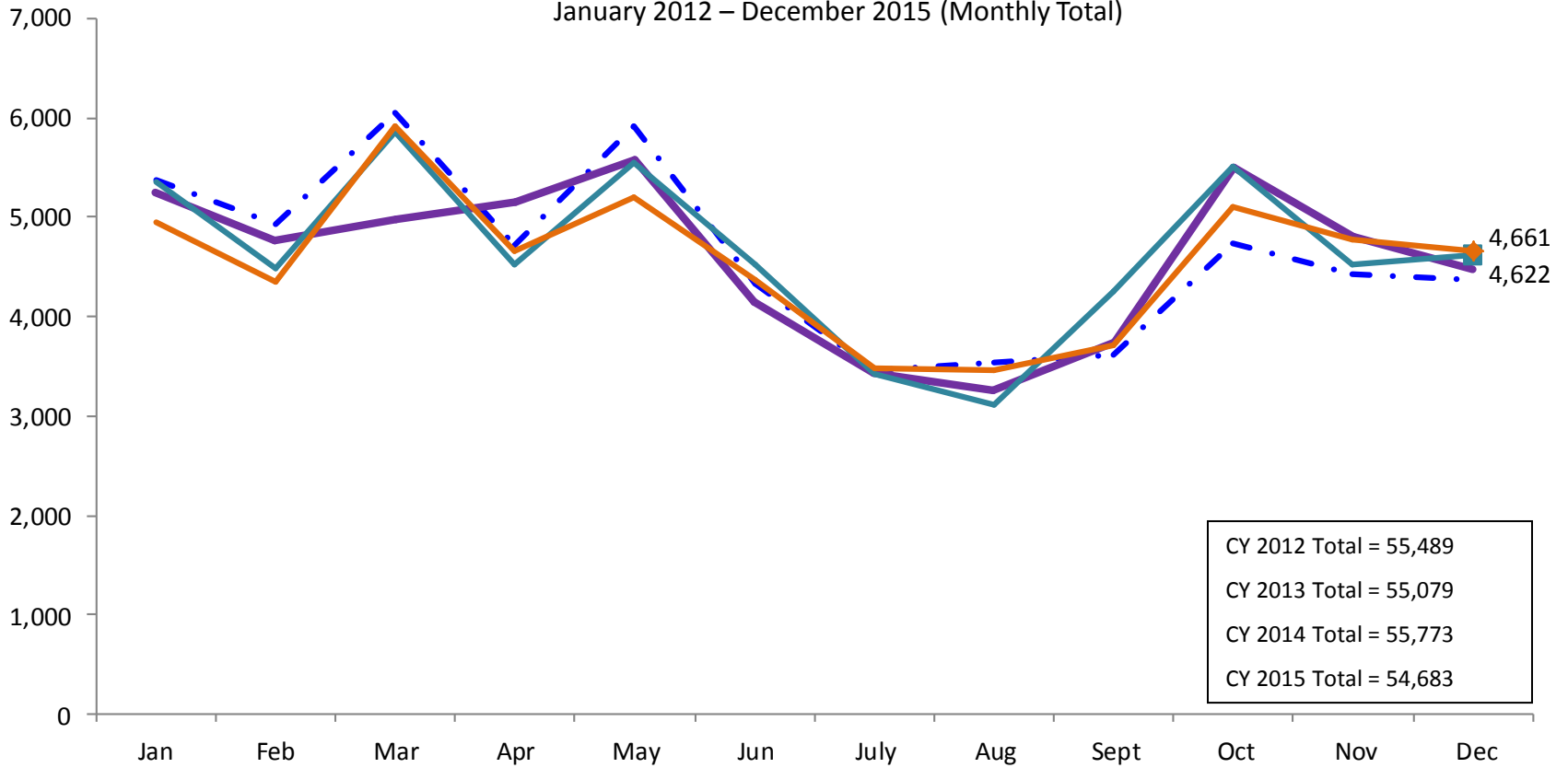
SCR Intakes

January 2012 – December 2015 (Monthly Total)



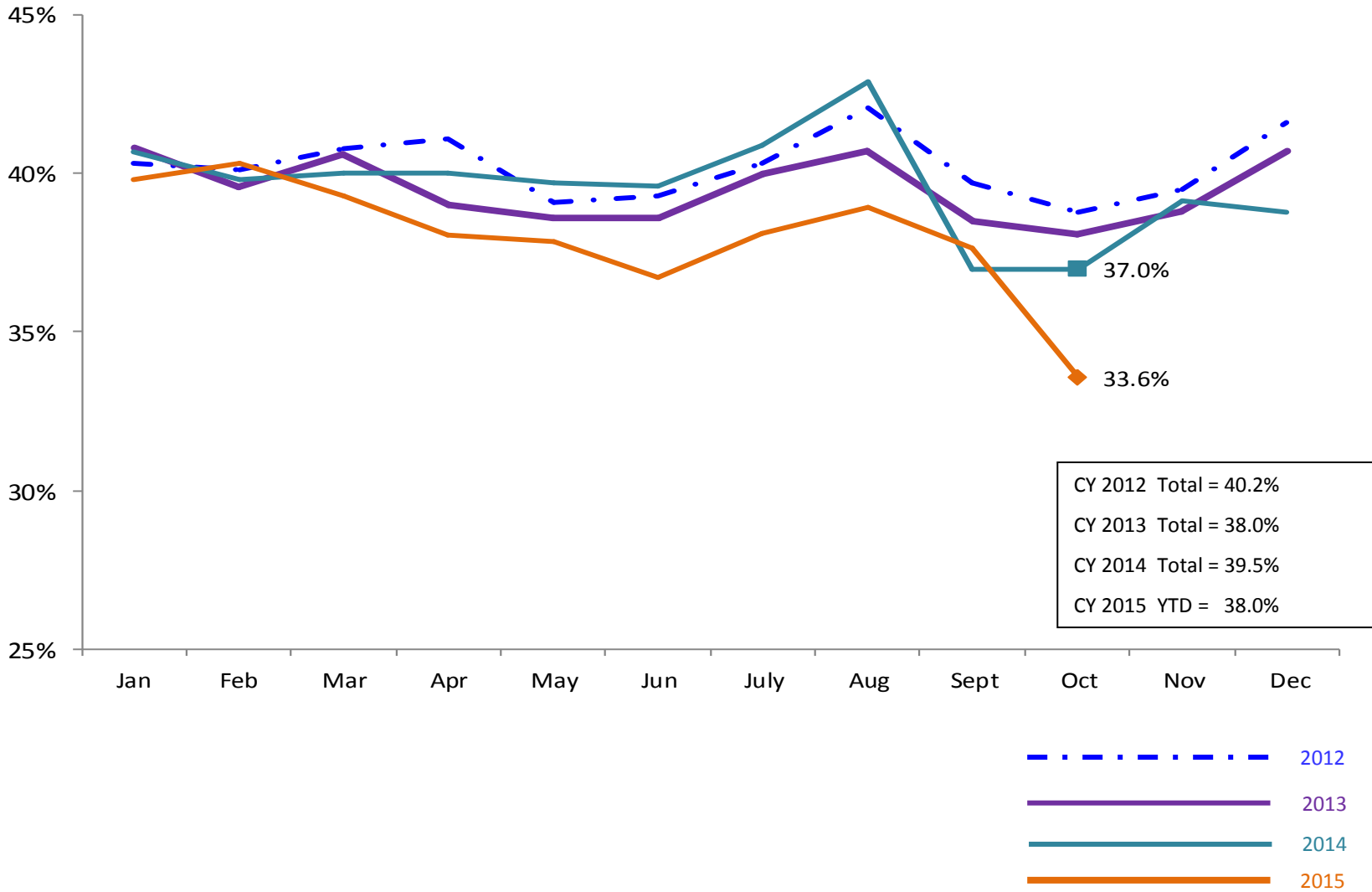
SCR Consolidated Investigations

January 2012 – December 2015 (Monthly Total)



SCR Investigation Indication Rate

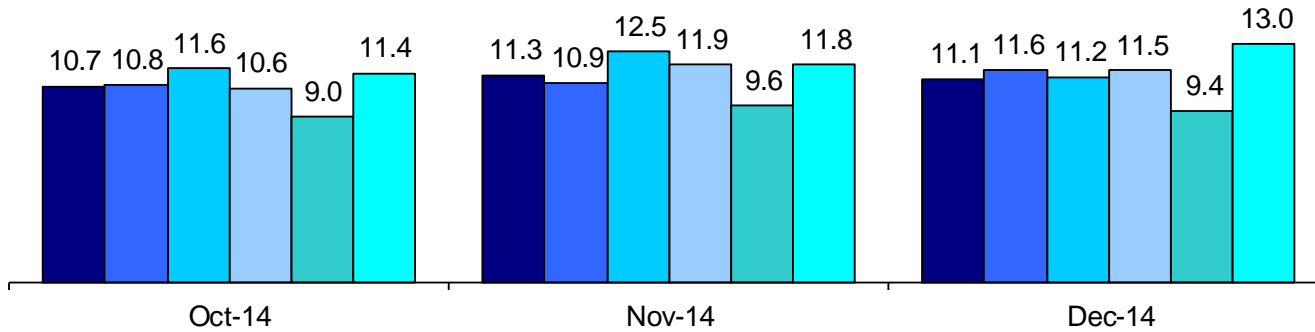
January 2012 – October 2015



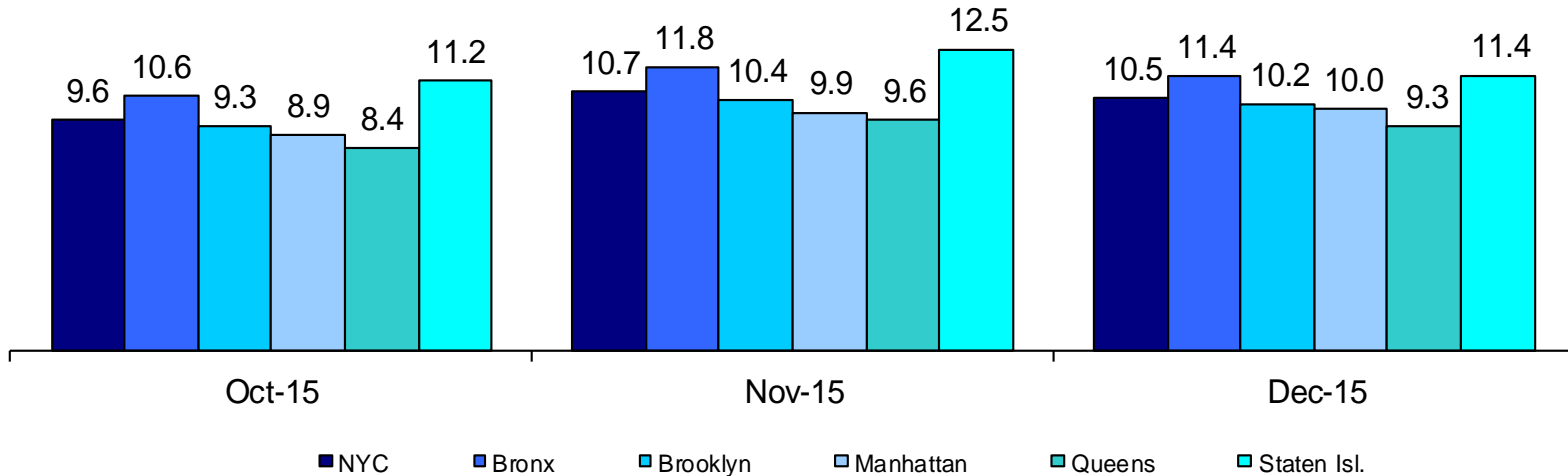
Average P/D Combined Caseload*

October 2014 – December 2014 & October 2015 – December 2015

2014



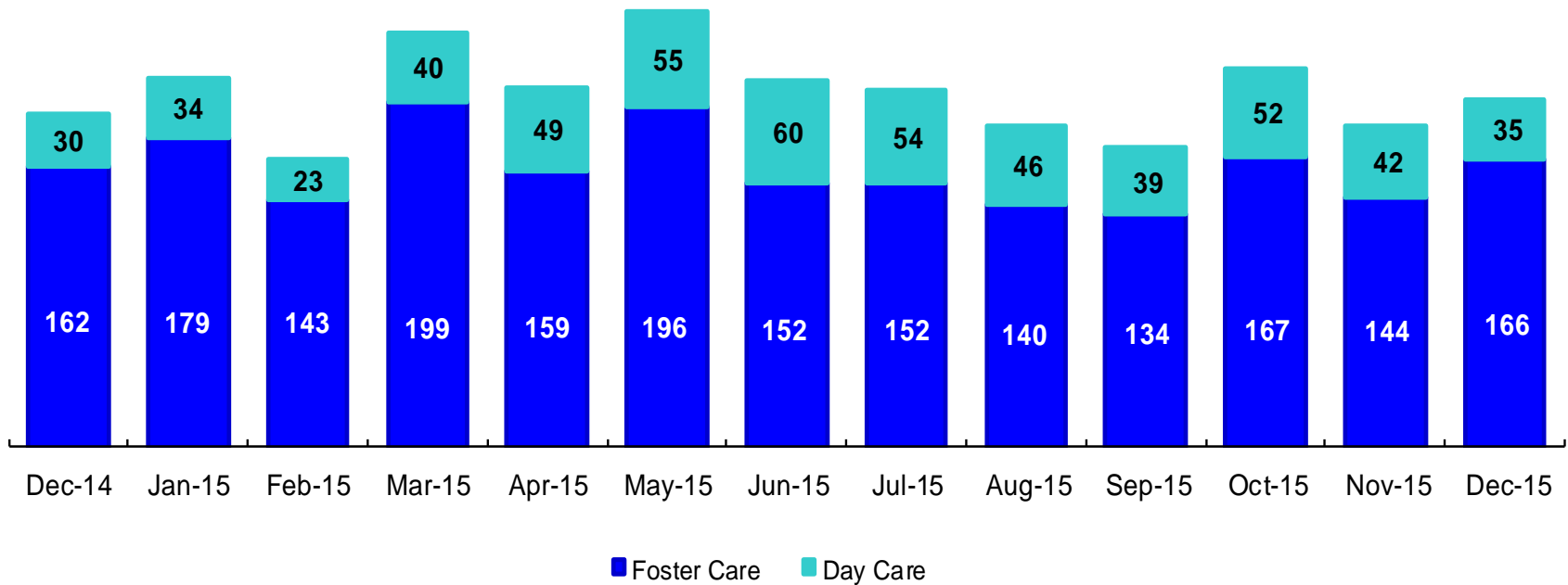
2015



* Caseloads are of protective/diagnostic caseworkers only and exclude the caseloads carried by Level I and Level II Supervisors.

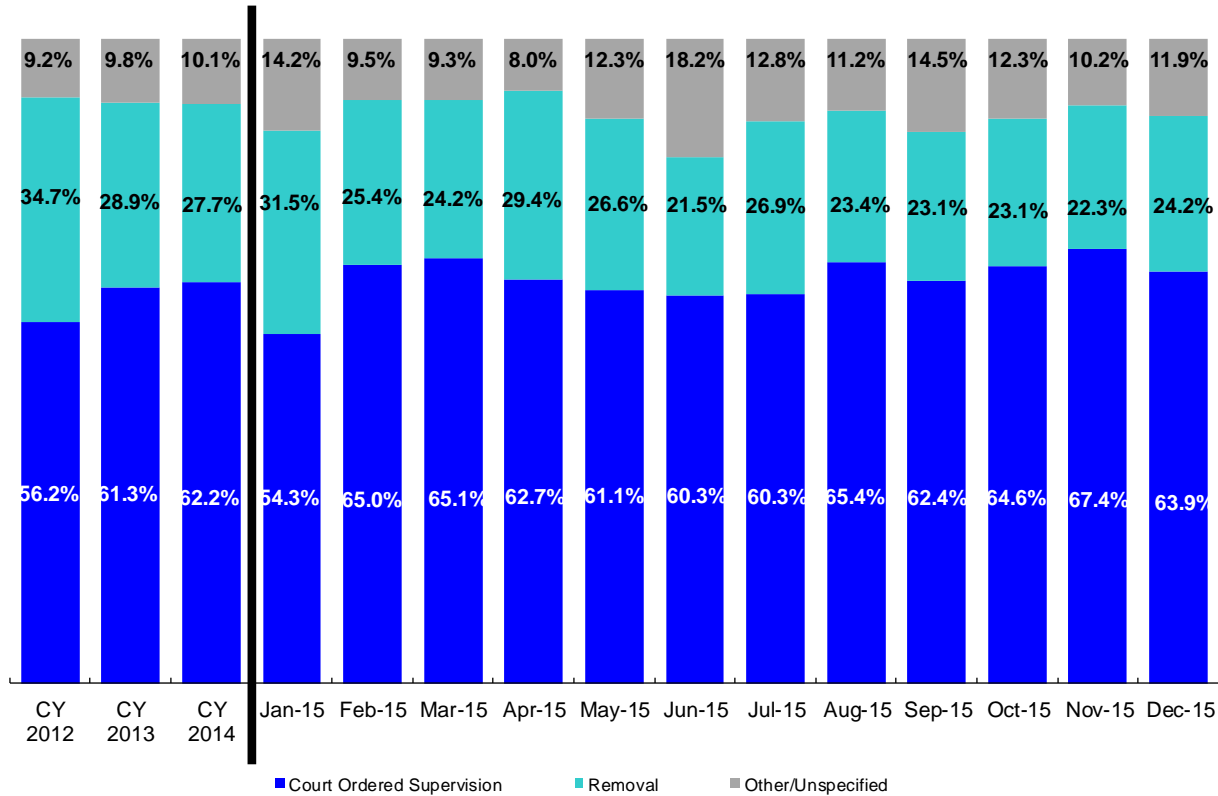
OSI Investigations by Program

December 2014 – December 2015



	Dec 2014	Jan 2015	Feb 2015	Mar 2015	Apr 2015	May 2015	Jun 2015	Jul 2015	Aug 2015	Sep 2015	Oct 2015	Nov 2015	Dec 2015
Number of Investigations	192	213	166	239	208	251	212	206	186	173	219	186	201

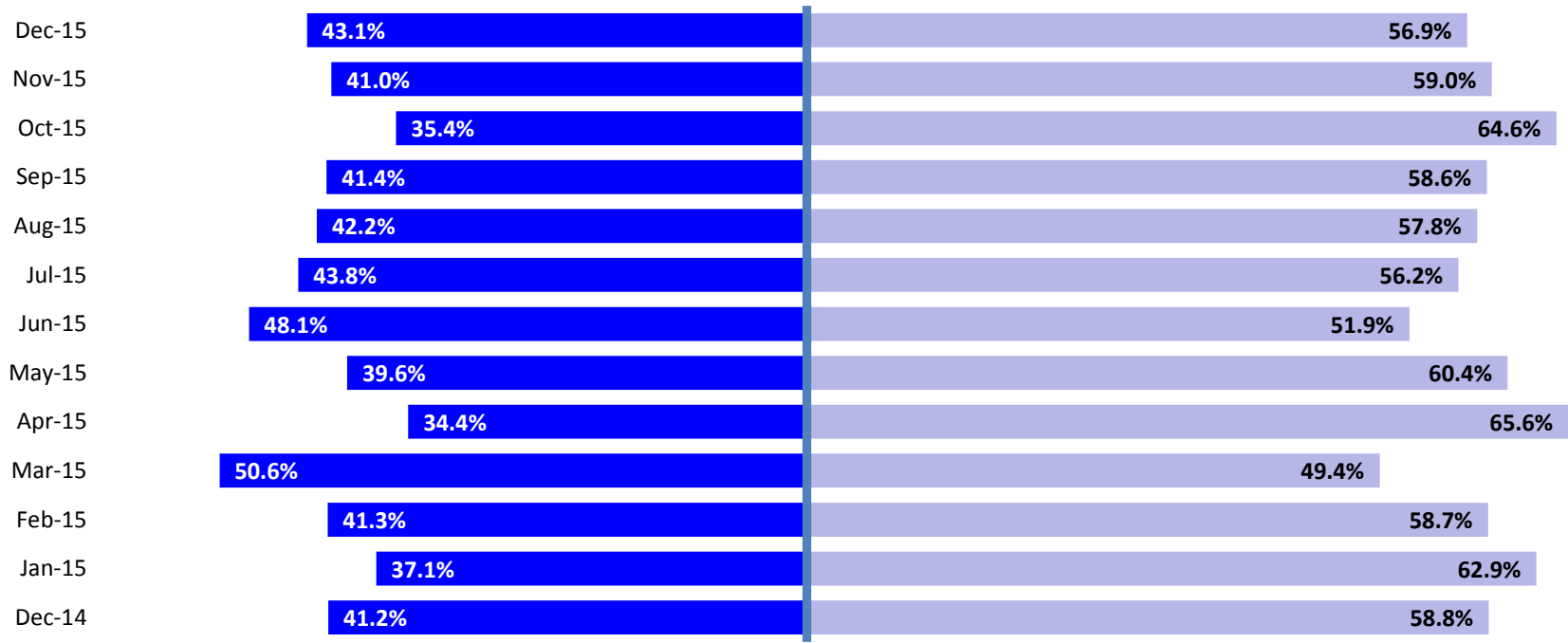
Article 10 Total Filings & Filing Outcomes, CY 2012 – December 2015



	CY 2012	CY 2013	CY 2014	Jan 2015	Feb 2015	Mar 2015	Apr 2015	May 2015	Jun 2015	July 2015	Aug 2015	Sep 2015	Oct 2015	Nov 2015	Dec 2015
Article 10 Filings	8,913	9,318	9,900	812	924	1,012	892	940	959	875	769	752	772	743	807

Note: The category "Other/Unspecified" includes released with no supervision, no order issued and no outcome specified. Outcomes of cases heard the next day are not captured in this report

Article 10 Filing Removals, December 2014 – December 2015

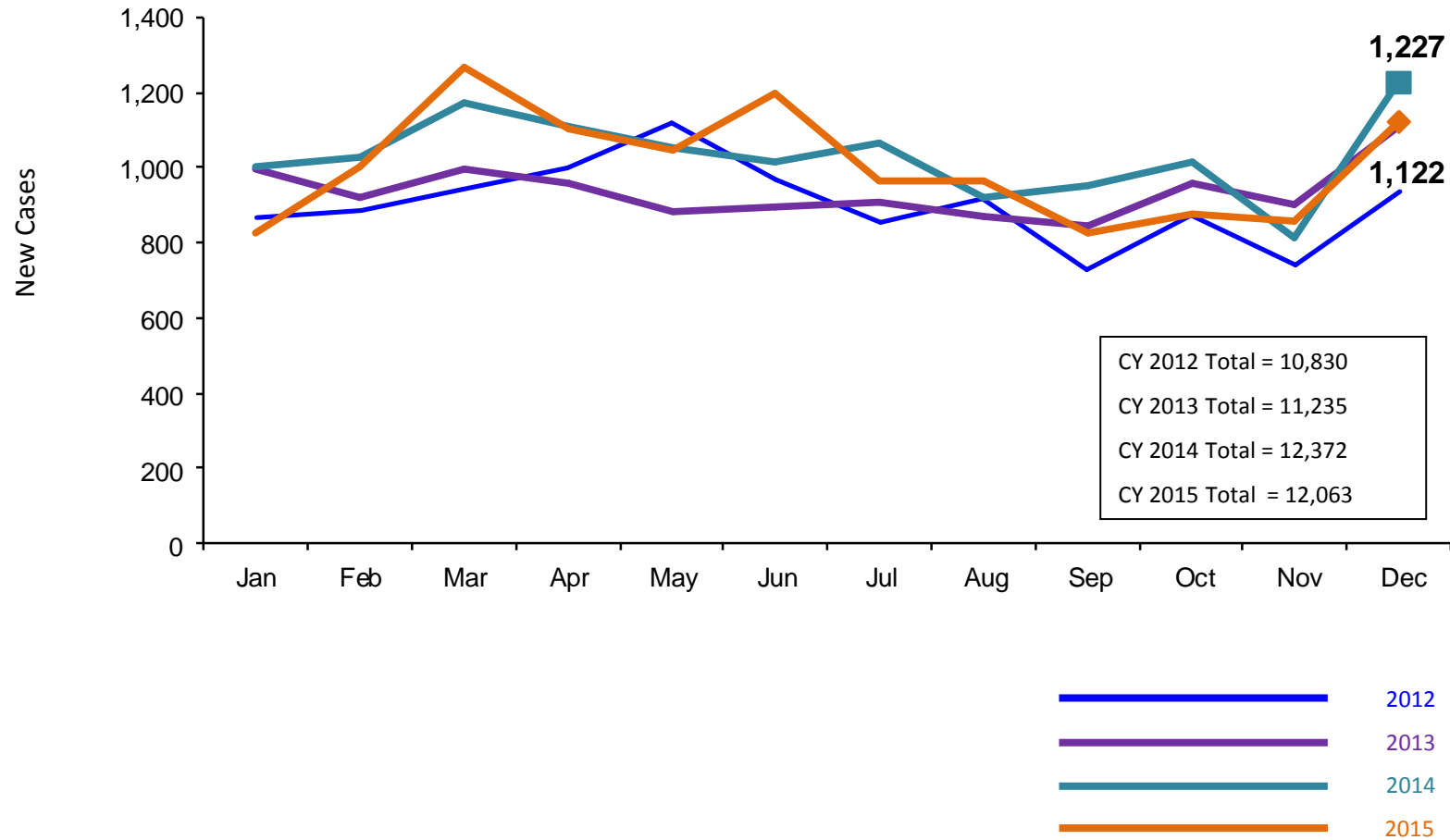


■ Pre-Filing Emergency Removals (court approved at initial hearing) ■ Post-Filing Removals (court ordered at initial hearing)

	Dec 2014	Jan 2015	Feb 2015	Mar 2015	Apr 2015	May 2015	Jun 2015	July 2015	Aug 2015	Sep 2015	Oct 2015	Nov 2015	Dec 2015
Number of Removals	262	256	235	245	262	250	206	235	180	174	178	166	195

New Preventive Cases*

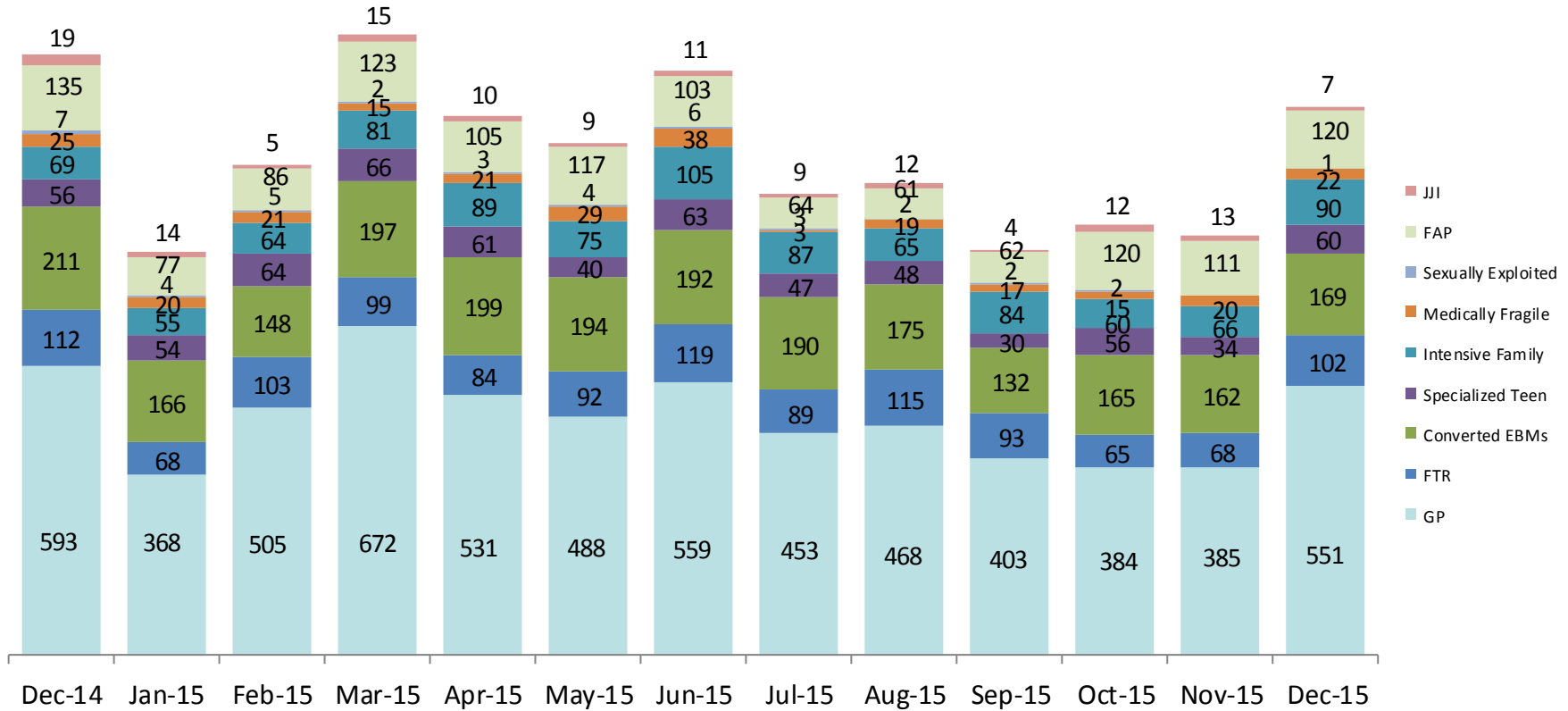
January 2012 – December 2015



*Notes: 1) New preventive cases do not include cases transferred from one preventive program to another. 2) See Pages 33 and 34 of the Appendix for supporting data.

New Preventive Cases* by Program Type

December 2014 – December 2015

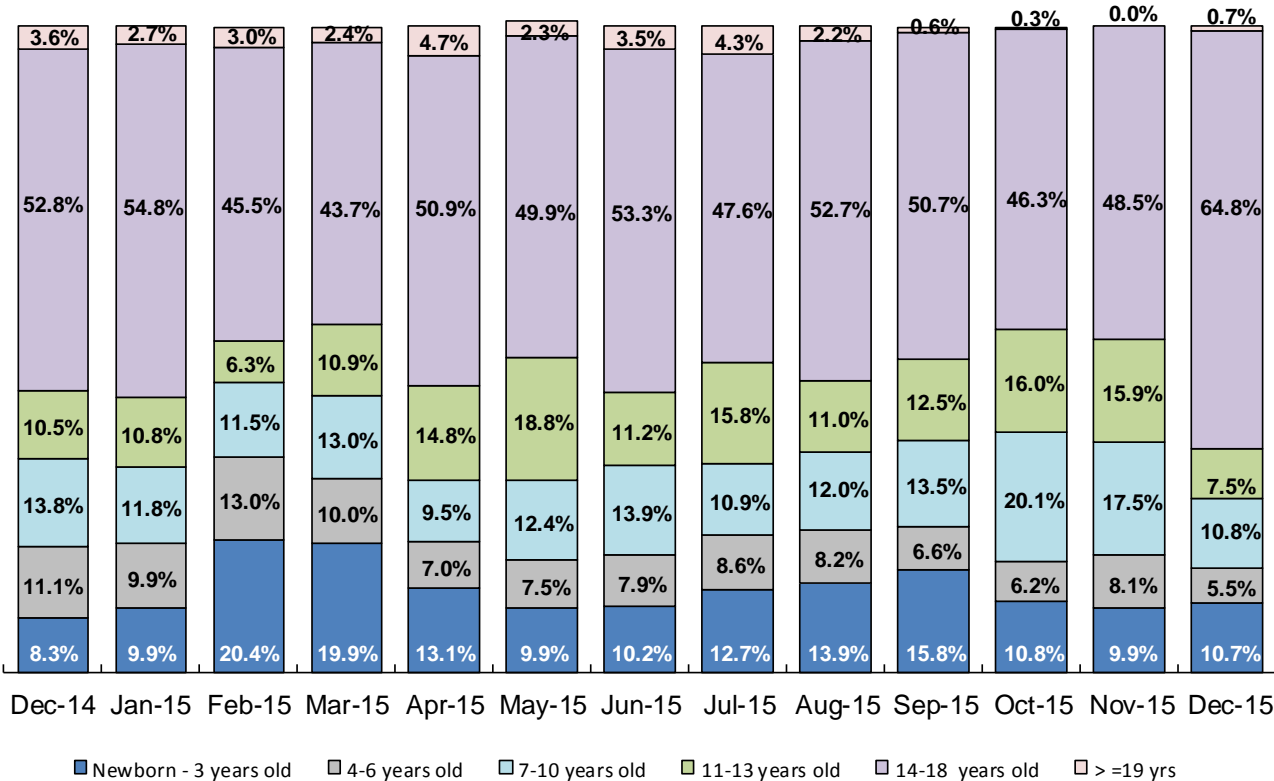


	Dec 2014	Jan 2015	Feb 2015	Mar 2015	Apr 2015	May 2015	Jun 2015	Jul 2015	Aug 2015	Sep 2015	Oct 2015	Nov 2015	Dec 2015
Number of New Preventive Cases	1,227	826	1,001	1,270	1,103	1,048	1,196	967	965	827	879	859	1,122

Note: New preventive cases do not include cases transferred from one preventive program to another.

Average Pre-Placement Residential Monthly Population

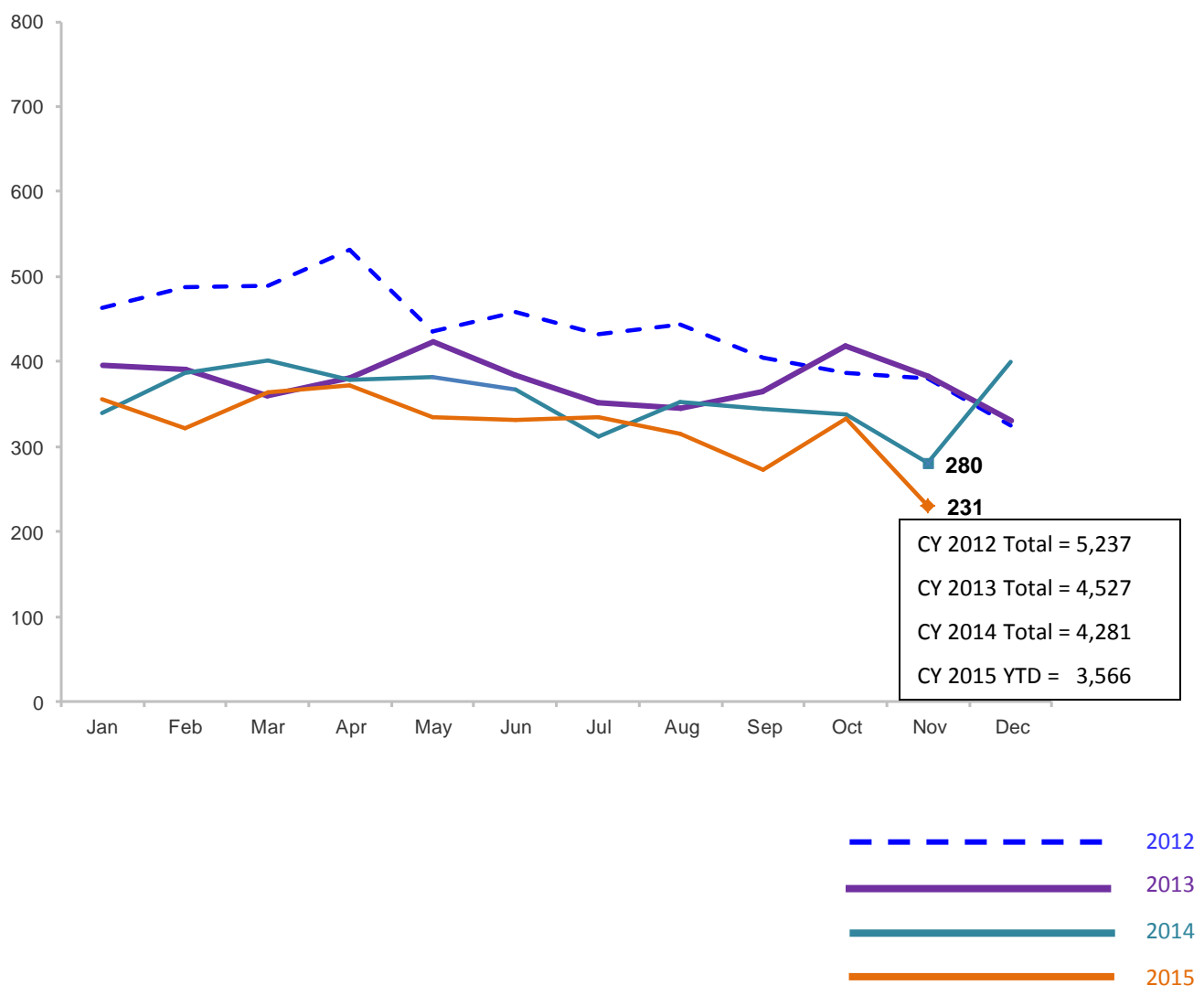
December 2014 – December 2015



	Dec 2014	Jan 2015	Feb 2015	Mar 2015	Apr 2015	May 2015	Jun 2015	July 2015	Aug 2015	Sep 2015	Oct 2015	Nov 2015	Dec 2015
Average Number of Children	44	51	39	50	52	60	50	42	40	36	45	40	40

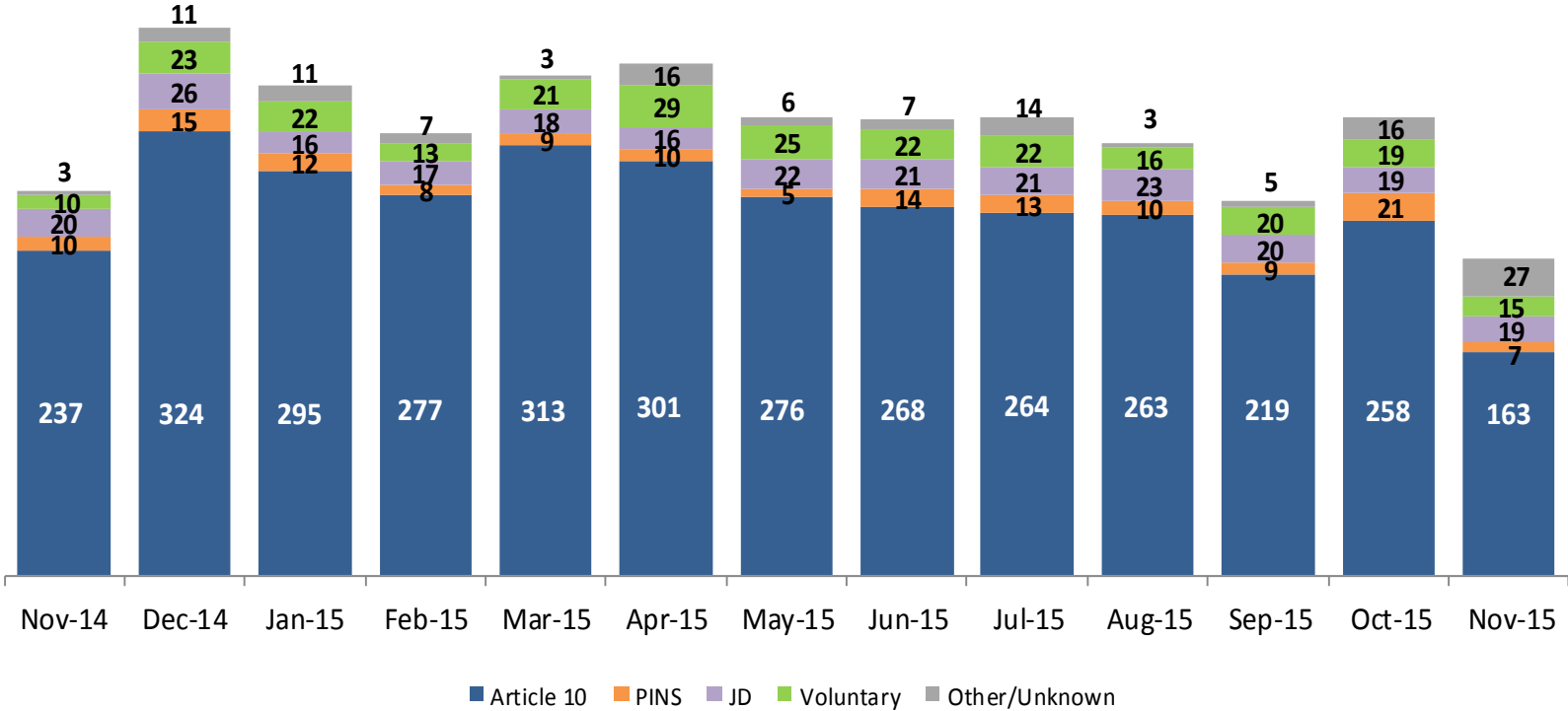
*Beginning in December 2014 the pre-placement residential population includes children at the Children’s Center and at the MercyFirst Reception Center.

Total Monthly Placements January 2012 – November 2015



Reason for Initial Placements into Foster Care

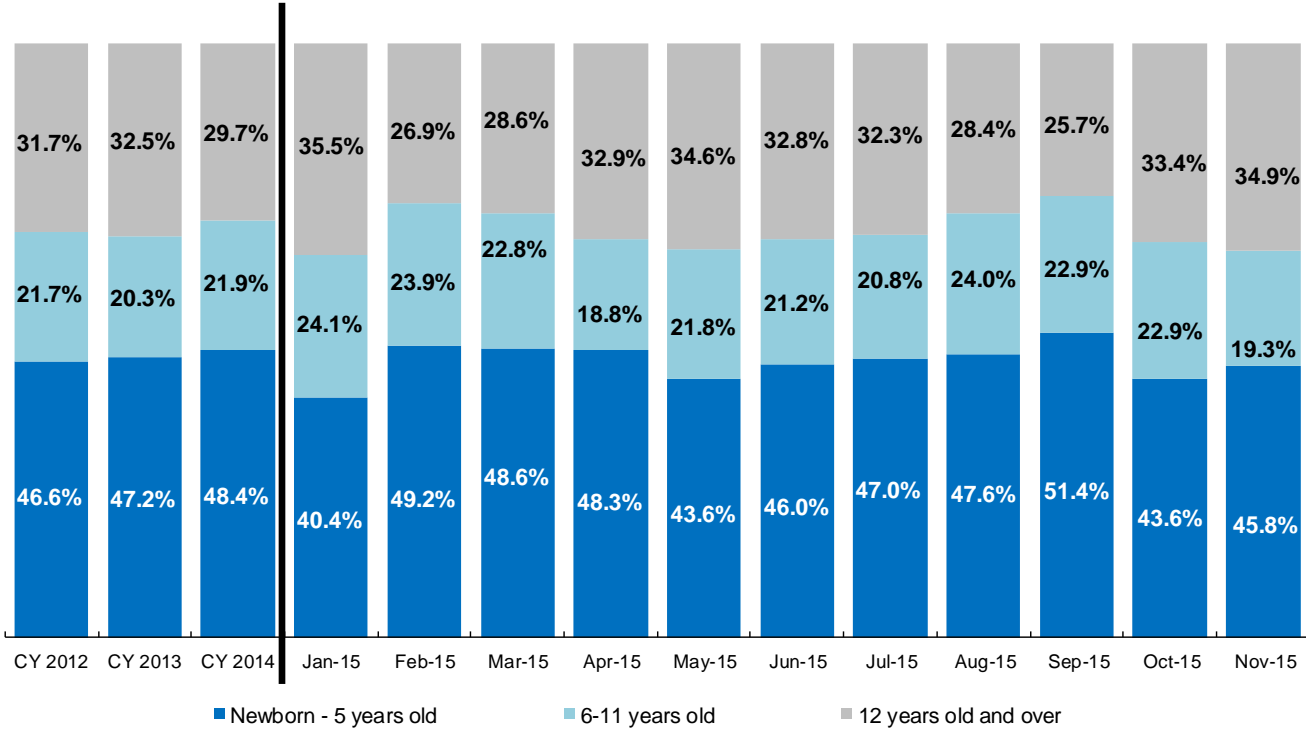
November 2014 – November 2015



	Nov 2014	Dec 2014	Jan 2015	Feb 2015	Mar 2015	Apr 2015	May 2015	Jun 2015	Jul 2015	Aug 2015	Sep 2015	Oct 2015	Nov 2015
Number of Placements	280	399	356	322	364	372	334	332	334	315	273	333	231

Placements* by Age

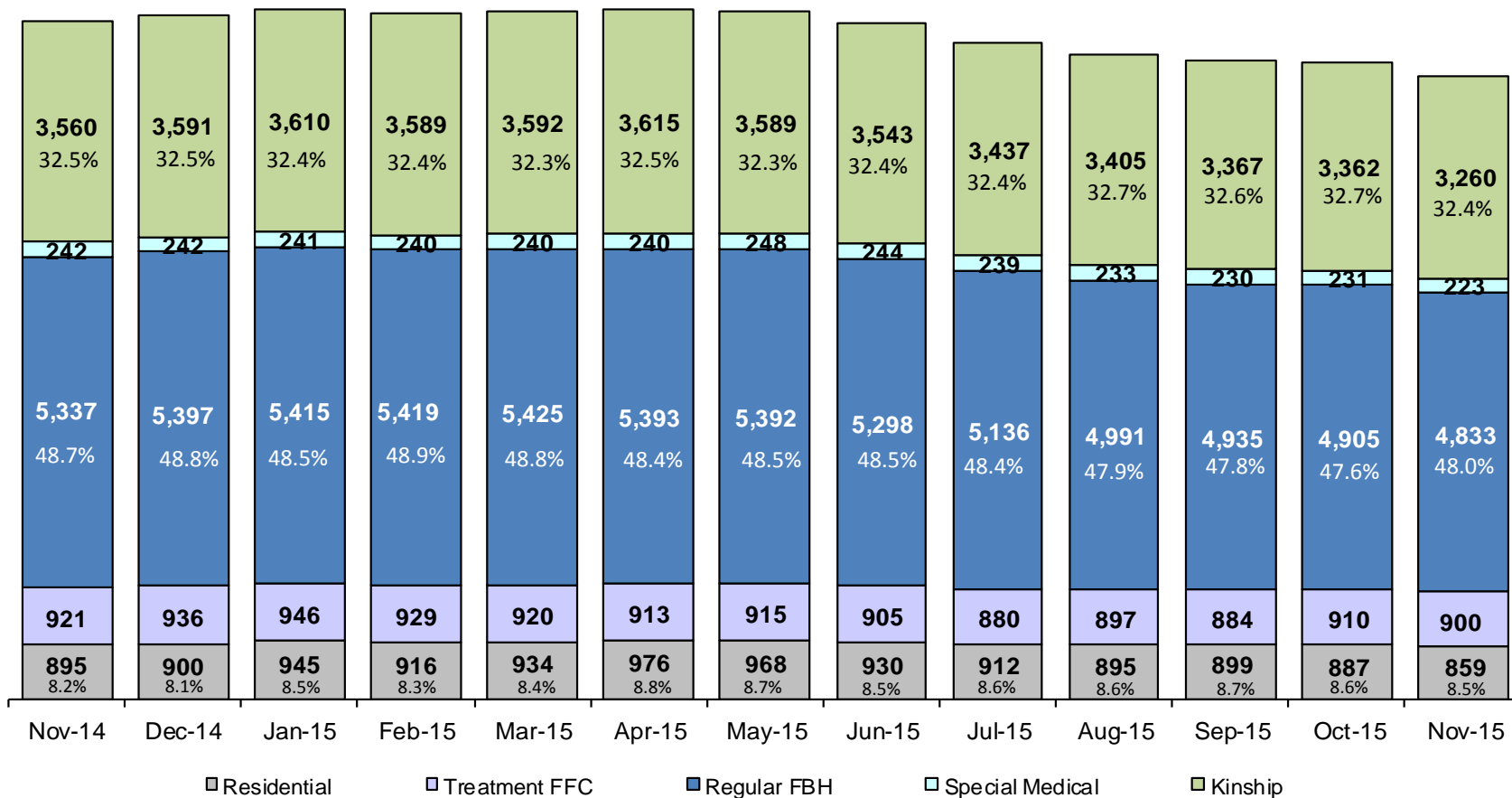
CY 2012 - November 2015



	CY 2012	CY 2013	CY 2014	Jan 2015	Feb 2015	Mar 2015	Apr 2015	May 2015	Jun 2015	Jul 2015	Aug 2015	Sep 2015	Oct 2015	Nov 2015
Placements (without JDs)	4,823	4,170	3,983	344	305	346	356	312	311	313	292	253	314	212

*Excludes JD placements.

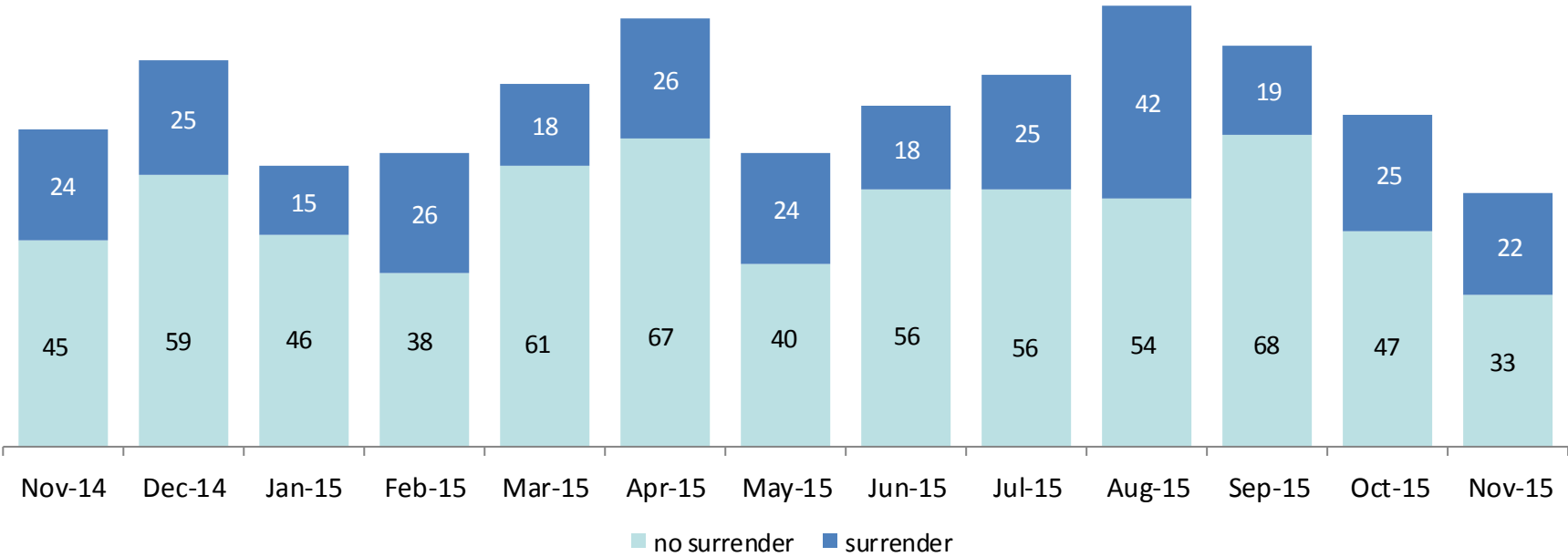
Children in Foster Care* November 2014 – November 2015 (end of month)



	Nov 2014	Dec 2014	Jan 2015	Feb 2015	Mar 2015	Apr 2015	May 2015	Jun 2015	Jul 2015	Aug 2015	Sep 2015	Oct 2015	Nov 2015
Number in Foster Care	10,955	11,066	11,157	11,093	11,111	11,137	11,112	10,920	10,604	10,421	10,315	10,295	10,075

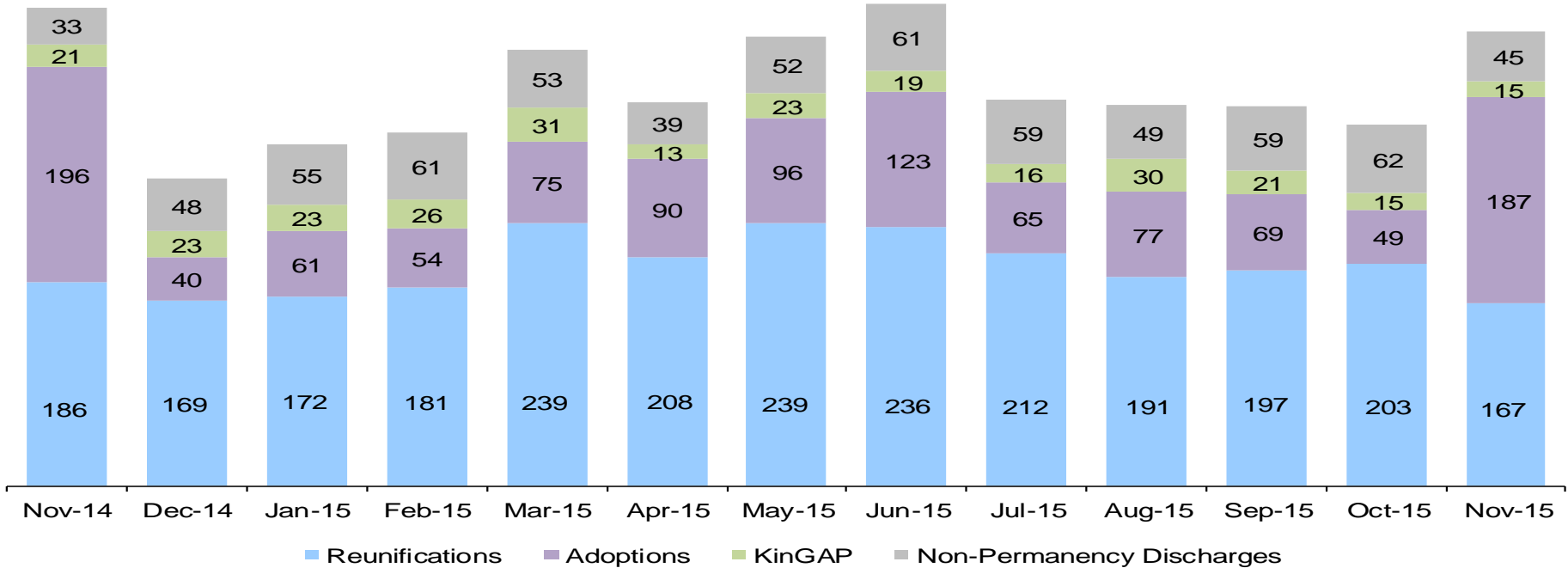
*Excludes JD placements and includes approximately 400 young children who are living in foster homes or residential care facilities with their mothers who are in foster care (8D children).

Children Freed for Adoption, Surrender by at Least One Parent November 2014 – November 2015



	Nov 2014	Dec 2014	Jan 2015	Feb 2015	Mar 2015	Apr 2015	May 2015	Jun 2015	Jul 2015	Aug 2015	Sep 2015	Oct 2015	Nov 2015
Number Freed for Adoption	69	84	61	64	79	93	64	74	81	96	87	72	55

Permanency and Non-Permanency* Discharges from Foster Care** November 2014 – November 2015



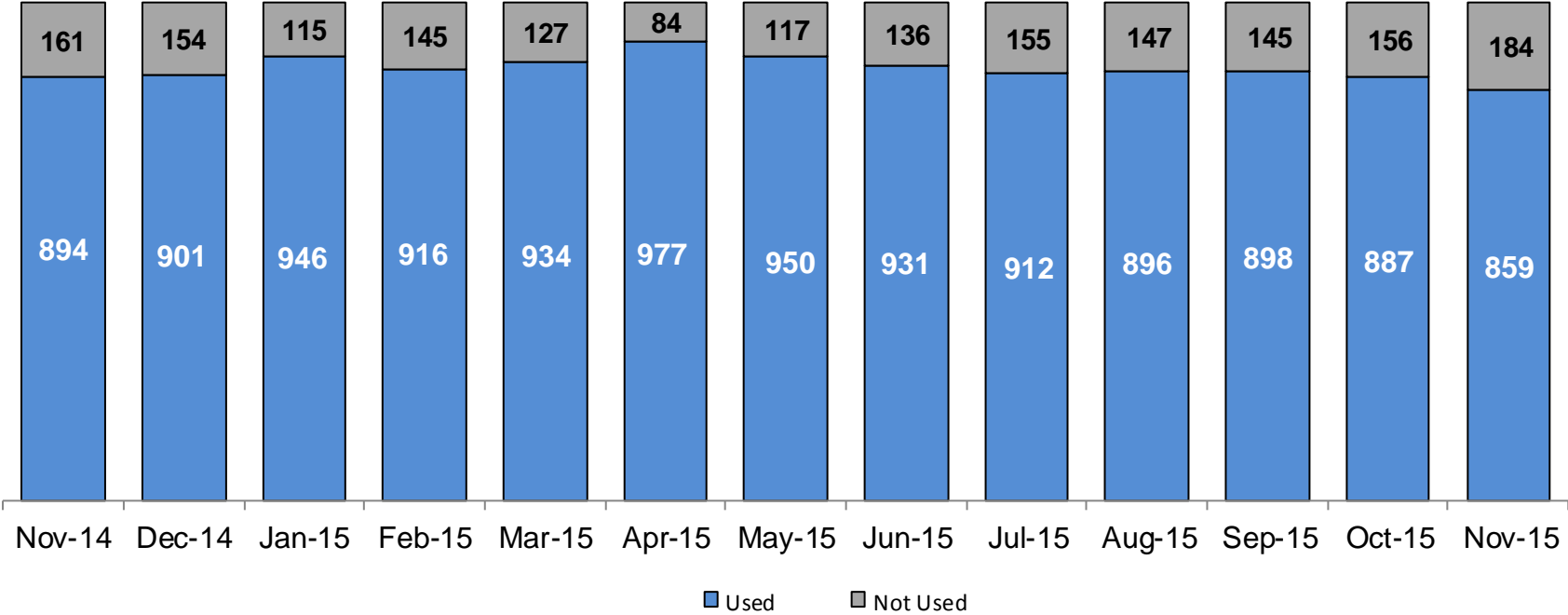
	Nov 2014	Dec 2014	Jan 2015	Feb 2015	Mar 2015	Apr 2015	May 2015	Jun 2015	Jul 2015	Aug 2015	Sep 2015	Oct 2015	Nov 2015
Number of Discharges	436	280	311	322	398	350	410	439	352	347	346	329	414

*Non-permanency discharges include AWOL, APPLA , other discharge destinations such as psychiatric institutions and correctional facilities and discharges with unspecified destinations.

**Excludes discharges of youth who entered care as a JD.

Residential Care Capacity and Utilization

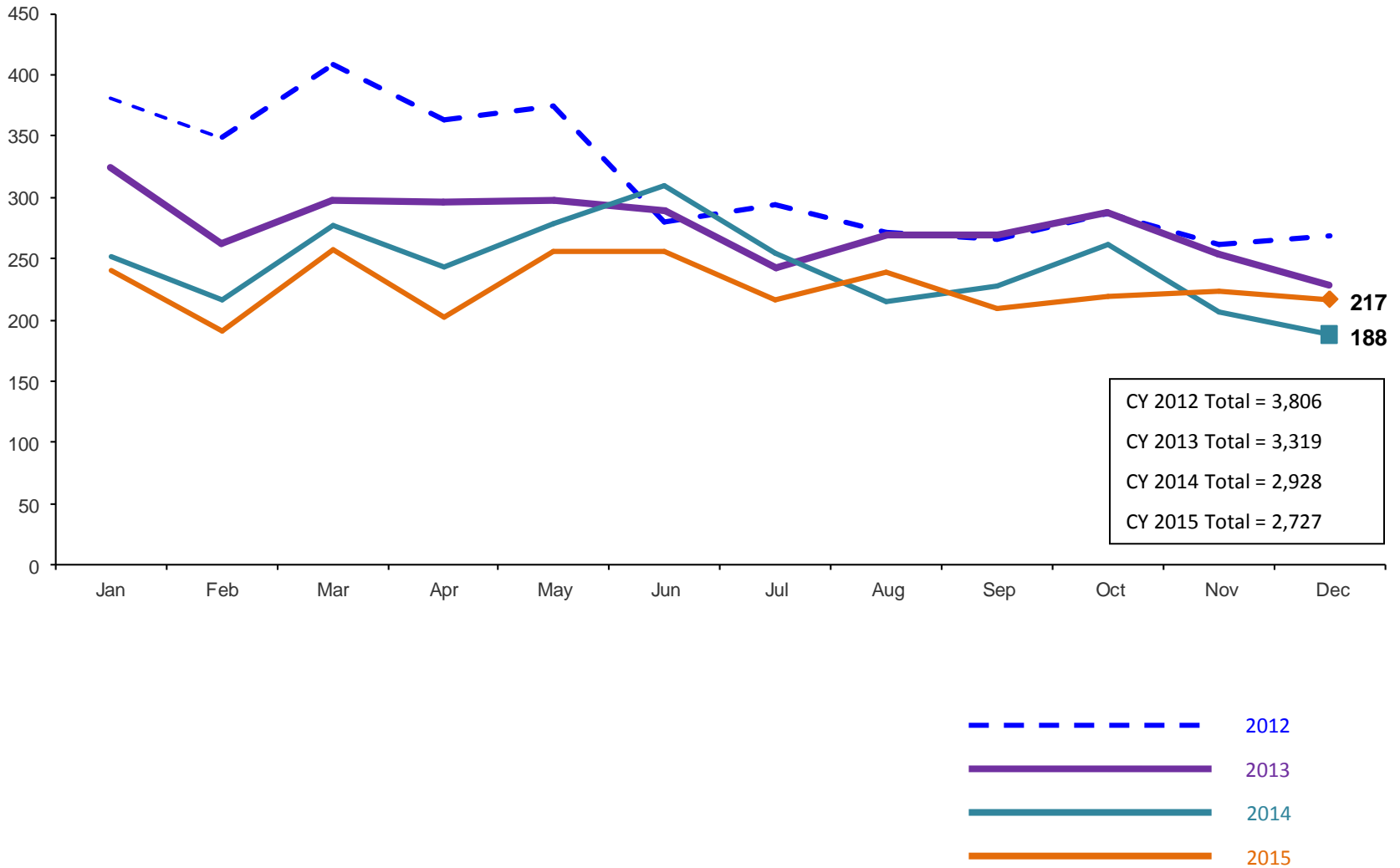
November 2014 – November 2015



	Nov 2014	Dec 2014	Jan 2015	Feb 2015	Mar 2015	Apr 2015	May 2015	Jun 2015	Jul 2015	Aug 2015	Sep 2015	Oct 2015	Nov 2015
Capacity	1,055	1,055	1,061	1,061	1,061	1,061	1,067	1,067	1,067	1,043	1,043	1,043	1,043

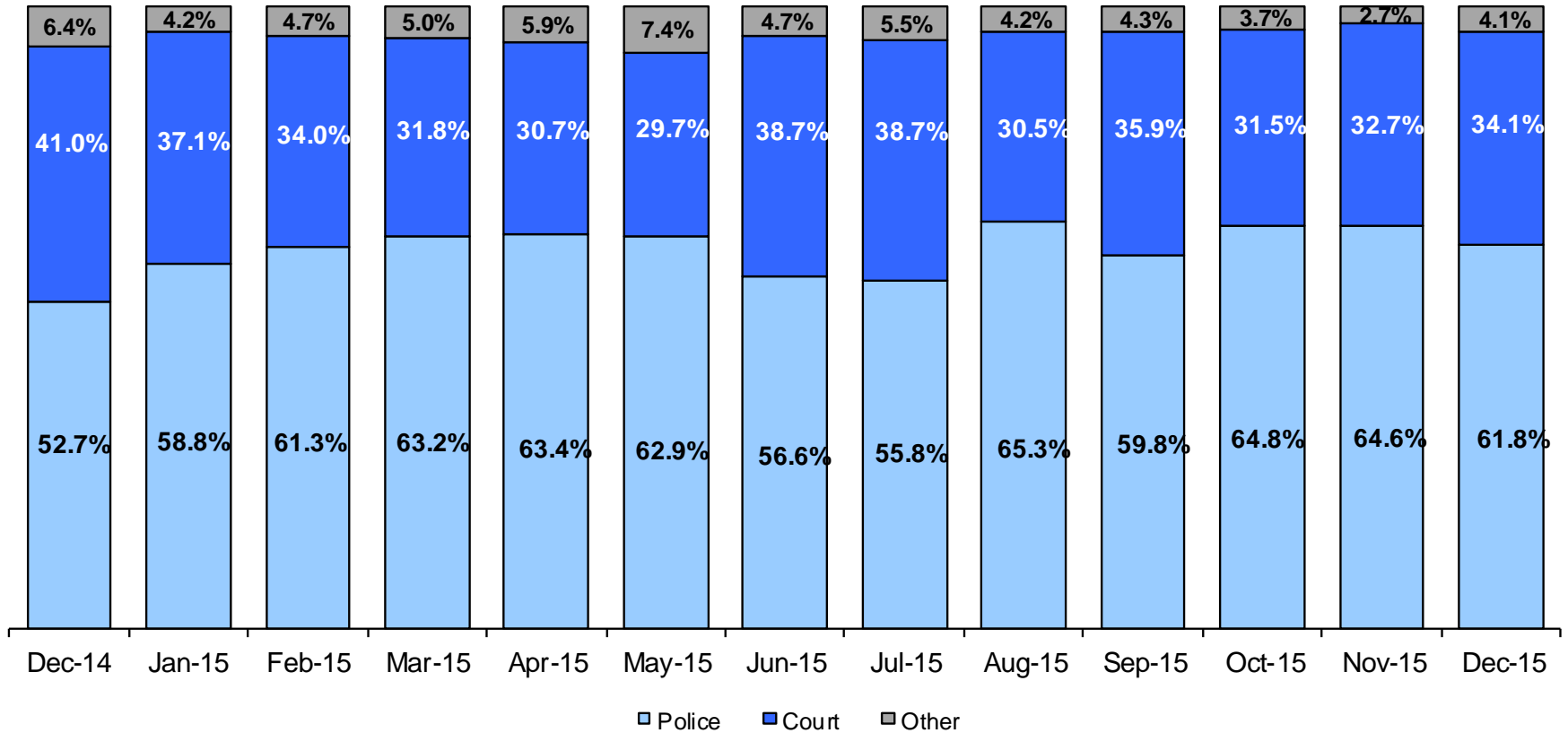
Total Monthly Admissions to Detention

January 2012 – December 2015 (Monthly Total)



Admit Authority on Admissions

December 2014 – December 2015 (Monthly Total)



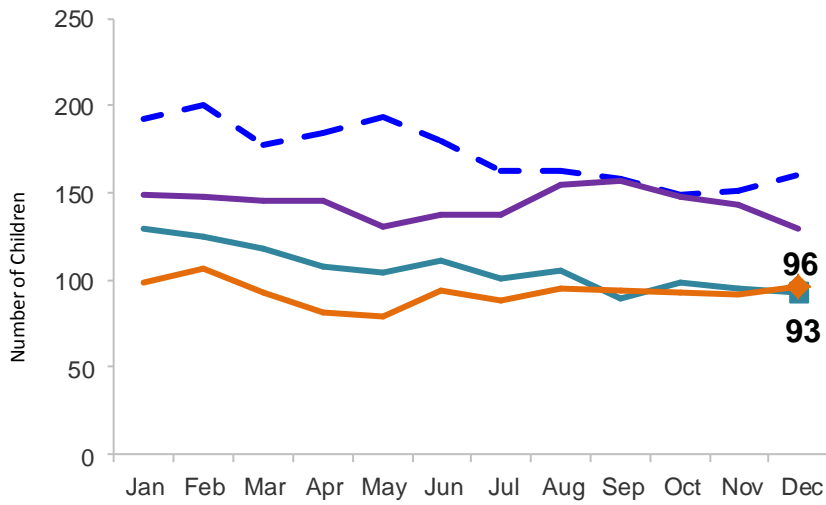
	Dec 2014	Jan 2015	Feb 2015	Mar 2015	Apr 2015	May 2015	Jun 2015	July 2015	Aug 2015	Sep 2015	Oct 2015	Nov 2015	Dec 2015
Number of Admissions	188	240	191	258	202	256	256	217	239	209	219	223	217

Note: Other Admit Authority includes the Sheriff Department, Department of Corrections and ACS.

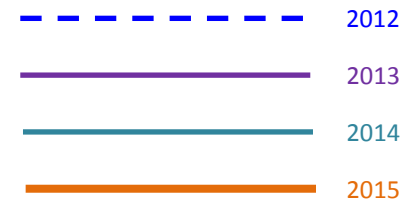
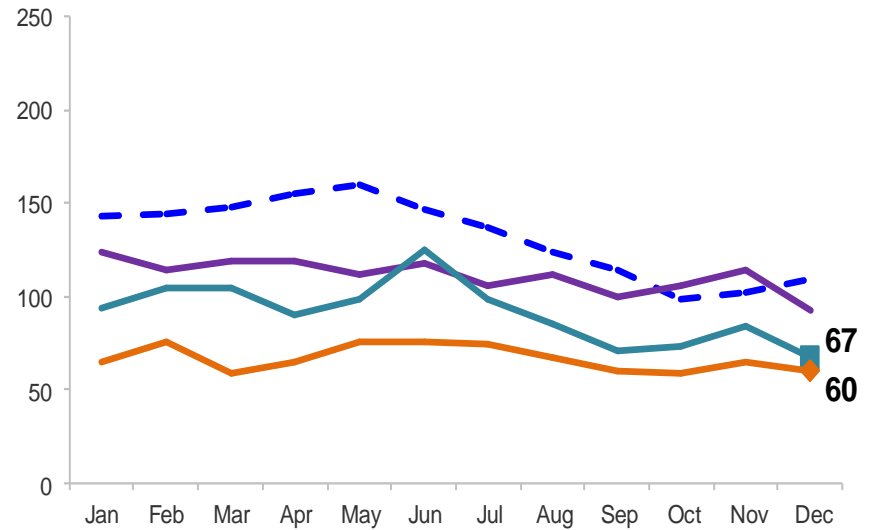
Monthly Average Daily Population

January 2012 – December 2015

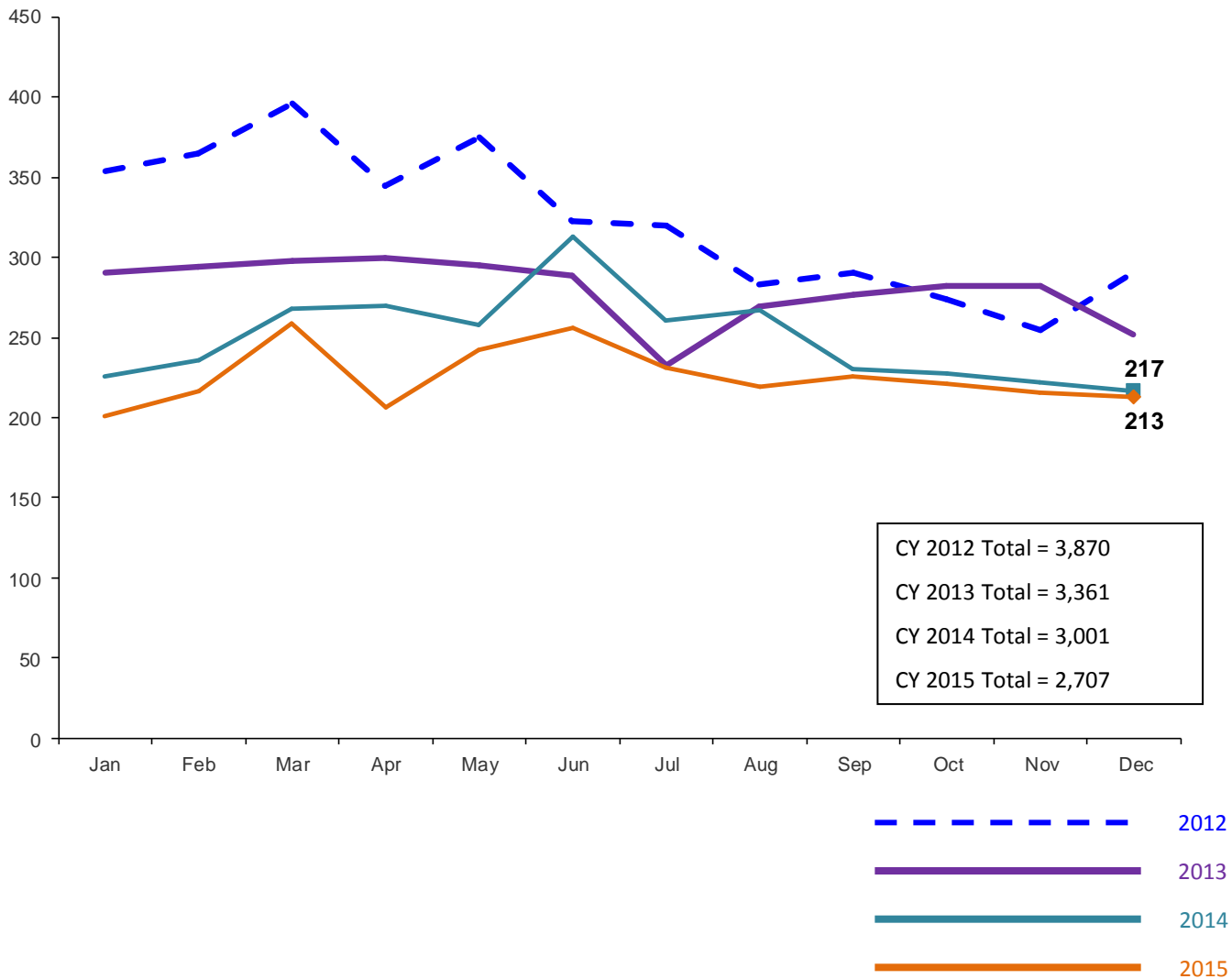
Secure Detention



Non-Secure Detention

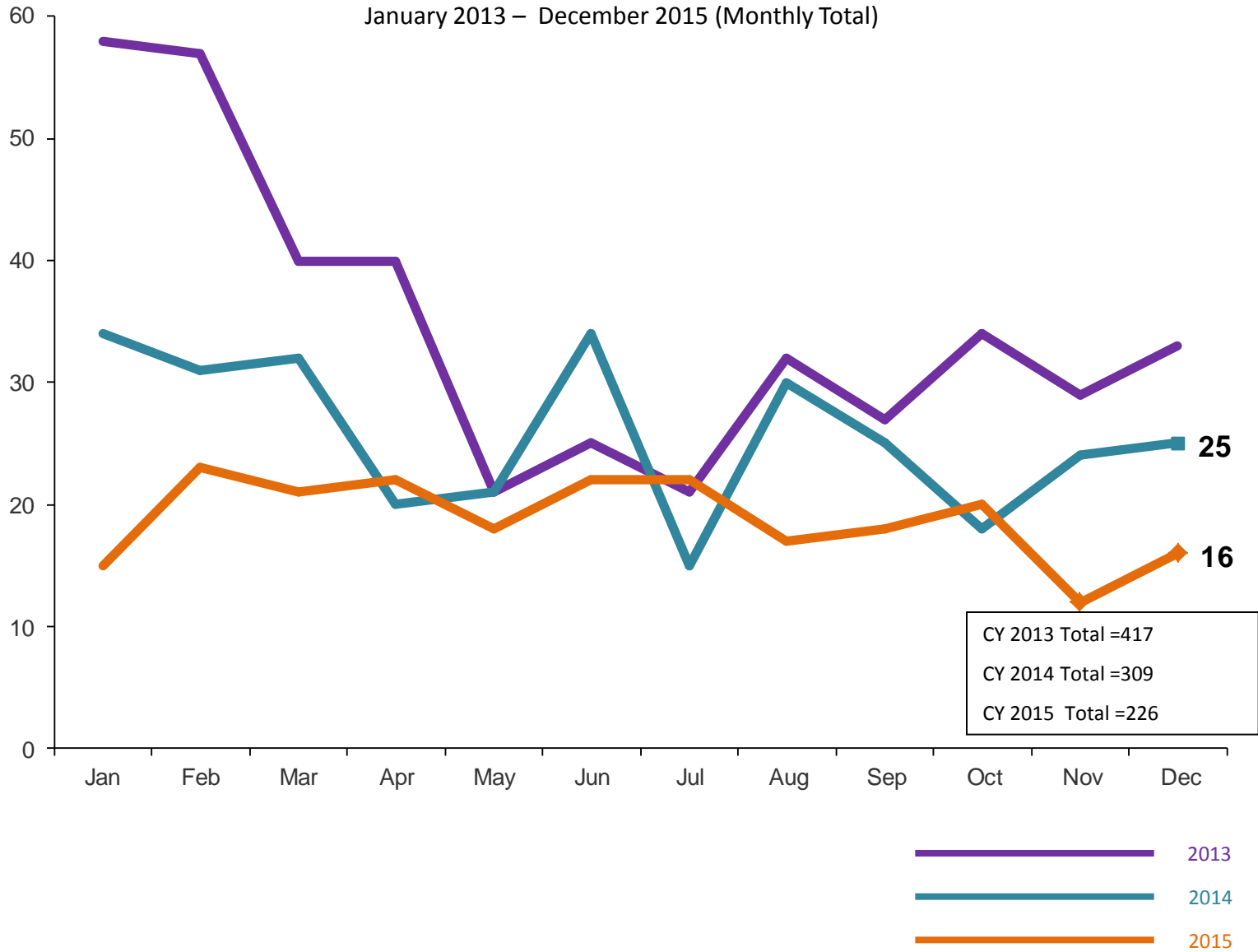


Total Monthly Releases from Detention January 2012 – December 2015 (Monthly Total)



Close to Home Intakes*

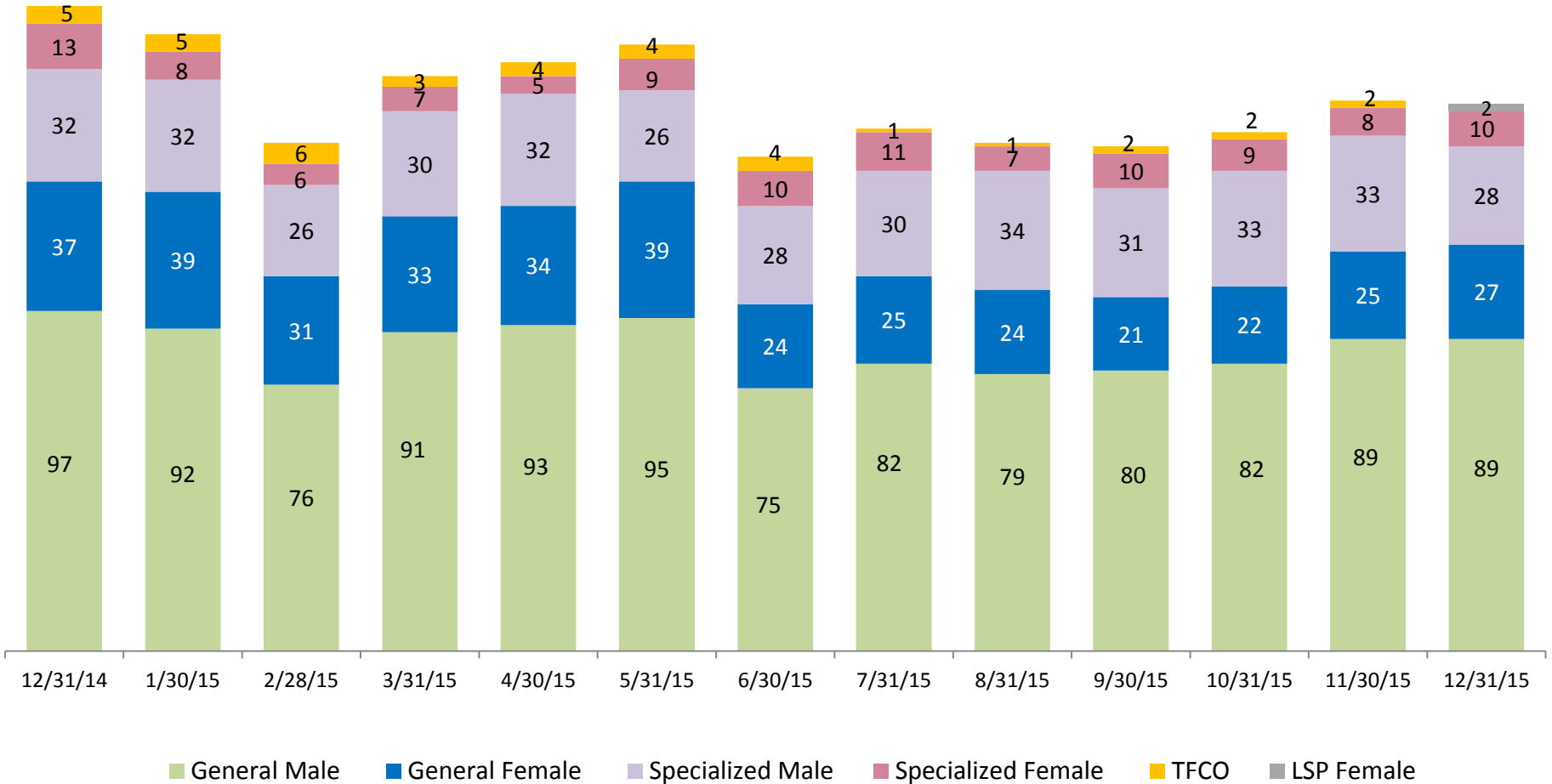
January 2013 – December 2015 (Monthly Total)



*Beginning in December 2015 Close to Home Intakes include LSP as well as NSP.

Close to Home Placement, in 24-hour Care

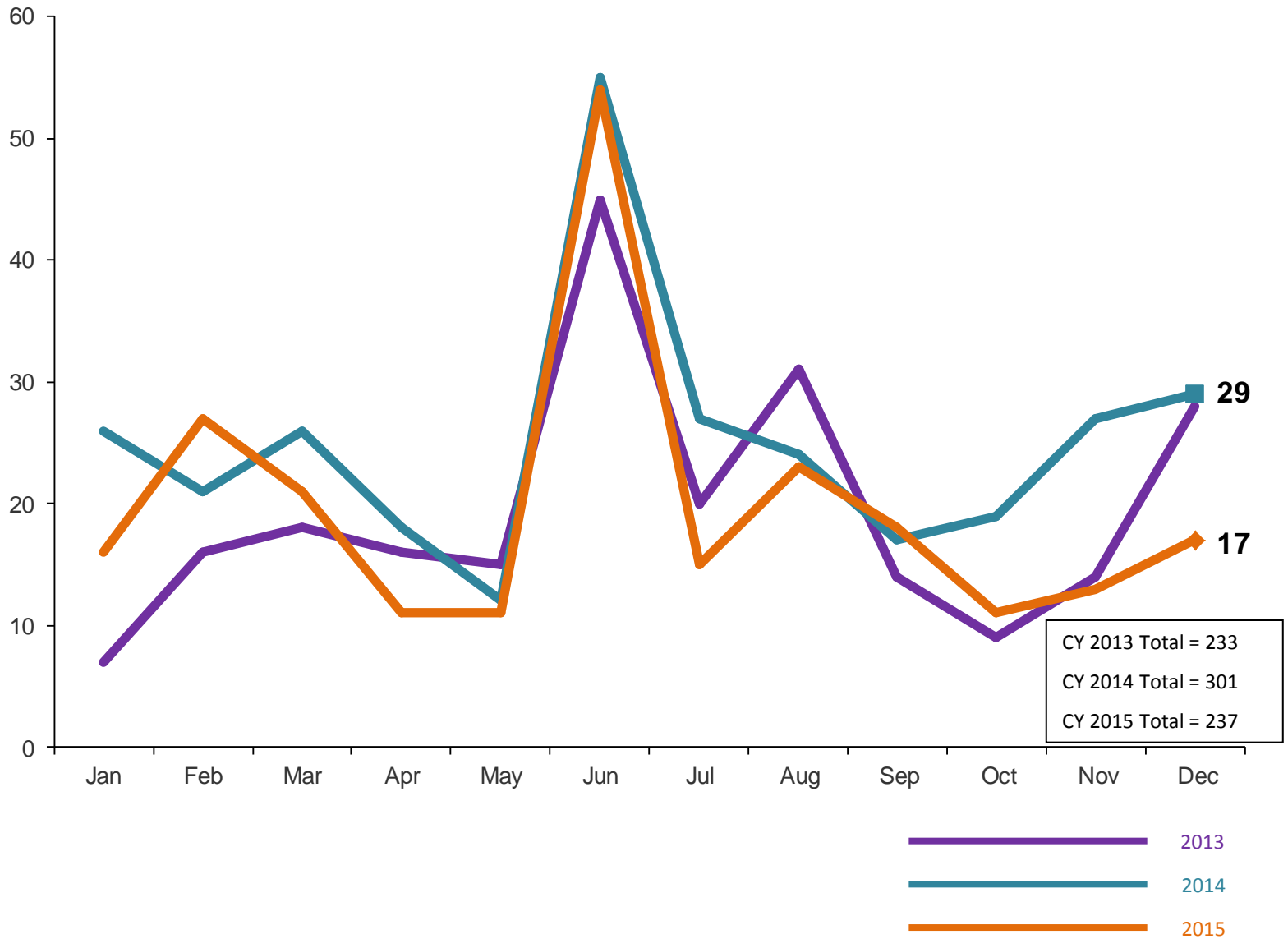
December 2014 – December 2015 (Point-in-Time)



	12/31/14	1/30/15	2/28/15	3/31/15	4/30/15	5/31/15	6/30/15	7/31/15	8/31/15	9/30/15	10/31/15	11/30/15	12/31/15
Number in Placement	184	176	145	164	168	173	141	149	145	144	148	157	156

Releases from Close to Home to Aftercare

January 2013 – December 2015 (Monthly Total)



Appendix

Figure 1: SCR Intakes by Borough, OCT 14 – DEC 14 and OCT 15 – DEC 15

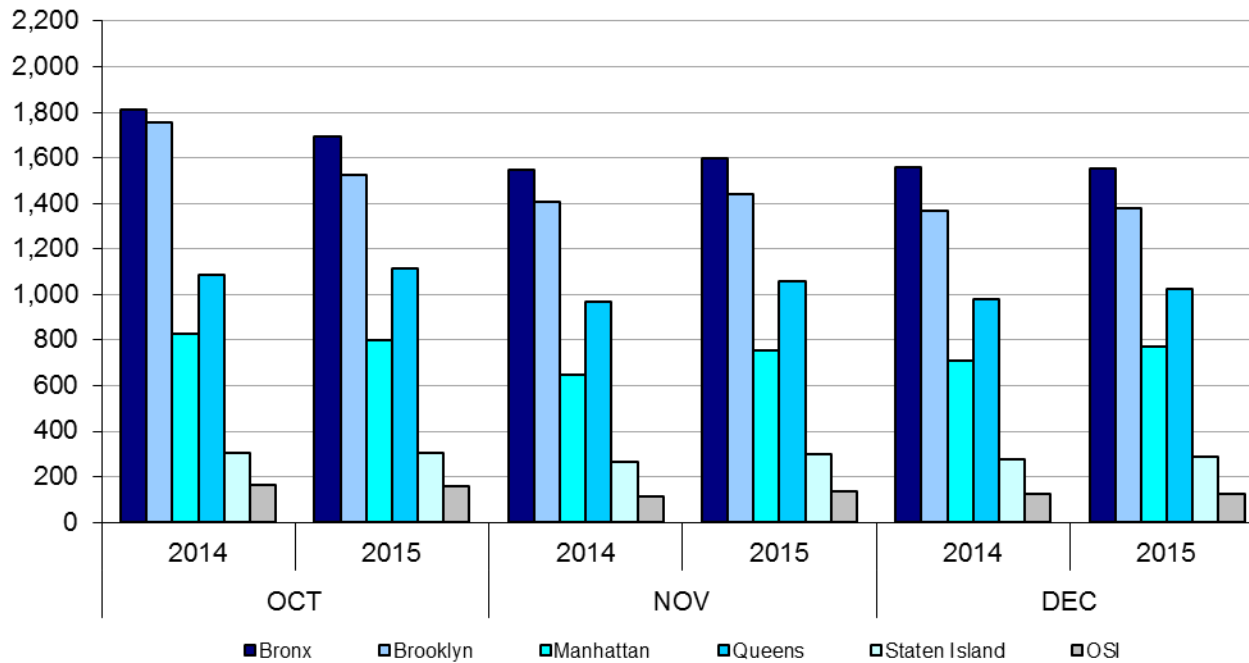


Table 1 - SCR Intake Changes by Borough, OCT 14 – DEC 14 and OCT 15 – DEC 15

Month	Year	Bronx	Brooklyn	Manhattan	Queens	Staten Island	OSI	Other	Total
OCT	2014	1,814	1,753	826	1,088	305	166	165	6,117
	2015	1,694	1,526	797	1,117	304	158	129	5,725
	% Change	-6.6%	-12.9%	-3.5%	2.7%	-0.3%	-4.8%	-21.8%	-6.4%
NOV	2014	1,548	1,409	647	971	266	114	90	5,045
	2015	1,596	1,440	756	1,057	297	137	147	5,430
	% Change	3.1%	2.2%	16.8%	8.9%	11.7%	20.2%	63.3%	7.6%
DEC	2014	1,559	1,370	711	980	277	125	126	5,148
	2015	1,552	1,377	772	1,024	285	124	143	5,277
	% Change	-0.4%	0.5%	8.6%	4.5%	2.9%	-0.8%	13.5%	2.5%
Total	2014	4,921	4,532	2,184	3,039	848	405	381	16,310
	2015	4,842	4,343	2,325	3,198	886	419	419	16,432
	% Change	-1.6%	-4.2%	6.5%	5.2%	4.5%	3.5%	10.0%	0.7%

Figure 2: Citywide SCR Intakes by Reporter Group, OCT 14 – DEC 14 and OCT 15 – DEC 15

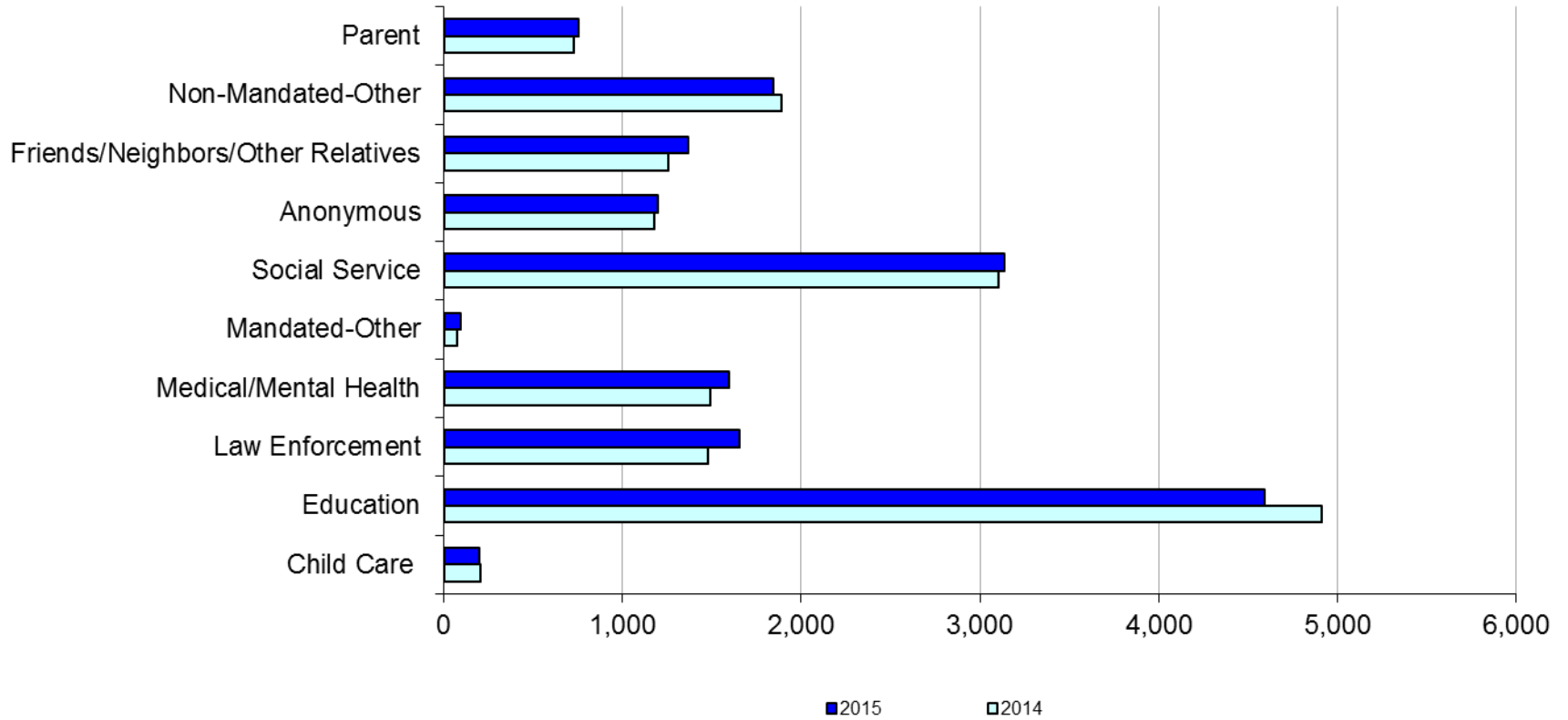
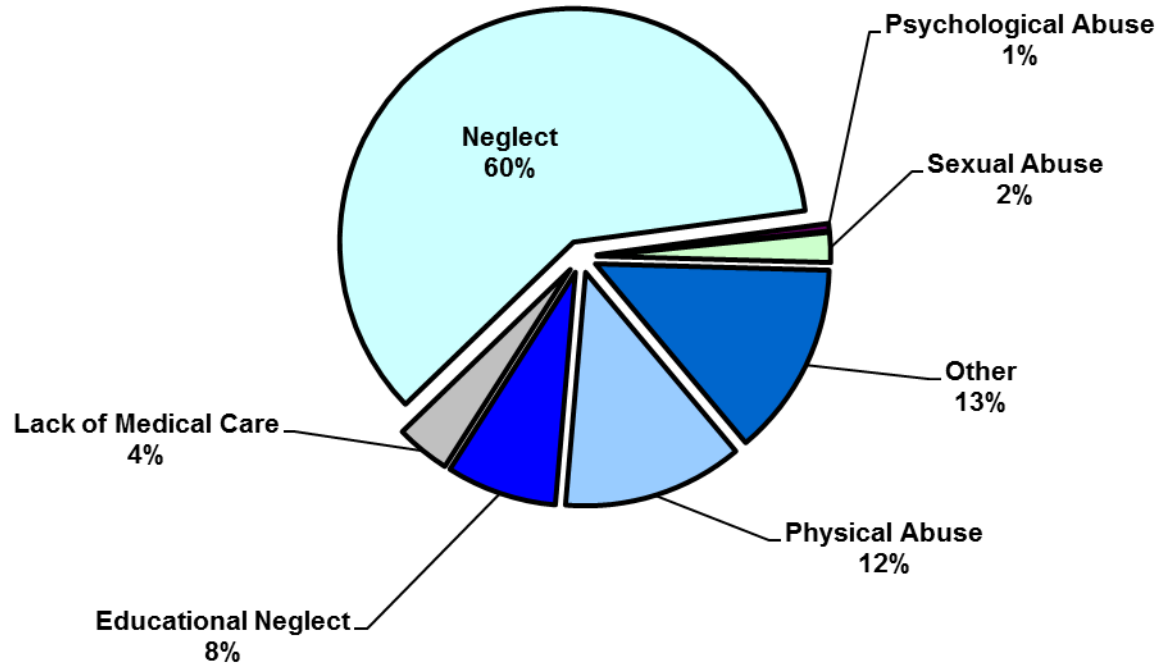


Table 2 - SCR Intakes by Reporter Group, OCT 14 – DEC 14 and OCT 15 – DEC 15

Year	Child Care/ Substitute Care Personnel	Educational Personnel	Law Enforcement	Medical/ Mental Health Personnel	Mandated- Other	Social Service Personnel	Anonymous	Friends/ Neighbors/ Other Relatives	Non- Mandated- Other	Parent	Foster Parent	Total
Bronx												
2014	58	1,528	341	427	22	960	360	406	623	191	2	4,918
2015	49	1,352	457	464	27	962	365	400	573	193	0	4,842
% Change	-15.5%	-11.5%	34.0%	8.7%	22.7%	0.2%	1.4%	-1.5%	-8.0%	1.0%	-100.0%	-1.5%
Brooklyn												
2014	49	1,438	431	380	24	770	346	368	530	193	1	4,530
2015	52	1,301	473	388	22	757	344	366	453	185	2	4,343
% Change	6.1%	-9.5%	9.7%	2.1%	-8.3%	-1.7%	-0.6%	-0.5%	-14.5%	-4.1%	100.0%	-4.1%
Manhattan												
2014	37	525	272	233	11	459	145	168	258	73	0	2,181
2015	28	540	294	266	12	484	150	185	257	107	0	2,323
% Change	-24.3%	2.9%	8.1%	14.2%	9.1%	5.4%	3.4%	10.1%	-0.4%	46.6%	--	6.5%
Queens												
2014	26	1,033	269	280	11	594	197	203	299	127	0	3,039
2015	29	1,045	263	314	15	628	194	265	318	127	0	3,198
% Change	11.5%	1.2%	-2.2%	12.1%	36.4%	5.7%	-1.5%	30.5%	6.4%	0.0%	--	5.2%
Staten Island												
2014	8	314	57	80	3	118	84	66	64	52	1	847
2015	13	281	82	87	7	109	90	104	88	25	0	886
% Change	62.5%	-10.5%	43.9%	8.8%	133.3%	-7.6%	7.1%	57.6%	37.5%	-51.9%	-100.0%	4.6%
OSI												
2014	24	44	20	43	4	85	28	20	80	54	4	406
2015	26	33	15	34	6	71	36	23	107	67	1	419
% Change	8.3%	-25.0%	-25.0%	-20.9%	50.0%	-16.5%	28.6%	15.0%	33.8%	24.1%	-75.0%	3.2%
Other												
2014	5	31	90	51	1	119	16	23	36	38	0	410
2015	2	38	71	45	2	128	17	26	47	51	0	427
% Change	-60.0%	22.6%	-21.1%	-11.8%	100.0%	7.6%	6.3%	13.0%	30.6%	34.2%	--	4.1%
Citywide												
2014	207	4,913	1,480	1,494	76	3,105	1,176	1,254	1,890	728	8	16,331
2015	199	4,590	1,655	1,598	91	3,139	1,196	1,369	1,843	755	3	16,438
% Change	-3.9%	-6.6%	11.8%	7.0%	19.7%	1.1%	1.7%	9.2%	-2.5%	3.7%	-62.5%	0.7%

Figure 3: SCR Allegations, OCT 15 – DEC 15



Total Allegations = 41,057

Allegations are grouped as follows: Physical Abuse - burn, fatality, fracture, choking, twisting, shaking, excessive corporal punishment, internal injuries, lacerations, bruises, welts, poisoning, noxious substances; Educational Neglect – educational neglect; Lack of Medical Care – lack of medical care; Neglect - inadequate guardianship, inadequate food, clothing, shelter, lack of supervision, malnutrition, failure to thrive, swelling, dislocations, sprains; Psychological Abuse - isolation, emotional neglect; Sexual Abuse – sexual abuse; and Other -parental drug use, child drug use, abandonment, inappropriate custodial conduct.

Table 3 - SCR Allegations, OCT 14 - DEC 14 and OCT 15 – DEC 15

Year	Physical Abuse	Educational Neglect	Lack of Medical Care	Neglect	Psychological Abuse	Sexual Abuse	Other	Total
Bronx								
2014	1,452	1,381	509	7,854	61	255	1,624	13,136
2015	1,488	1,086	490	7,818	62	233	1,645	12,822
% Change	2.5%	-21.4%	-3.7%	-0.5%	1.6%	-8.6%	1.3%	-2.4%
Brooklyn								
2014	1,514	1,076	464	6,931	58	244	1,397	11,684
2015	1,384	1,015	393	6,598	49	226	1,422	11,087
% Change	-8.6%	-5.7%	-15.3%	-4.8%	-15.5%	-7.4%	1.8%	-5.1%
Manhattan								
2014	510	380	187	2,728	24	68	568	4,465
2015	562	359	220	2,900	26	106	618	4,791
% Change	10.2%	-5.5%	17.6%	6.3%	8.3%	55.9%	8.8%	7.3%
Queens								
2014	1,074	463	280	4,118	56	139	893	7,023
2015	1,076	434	247	4,267	55	148	1,061	7,288
% Change	0.2%	-6.3%	-11.8%	3.6%	-1.8%	6.5%	18.8%	3.8%
Staten Island								
2014	278	194	73	1,273	18	35	324	2,195
2015	255	174	97	1,444	14	42	383	2,409
% Change	-8.3%	-10.3%	32.9%	13.4%	-22.2%	20.0%	18.2%	9.7%
OSI								
2014	263	49	53	1,044	8	49	183	1,649
2015	236	40	54	1,051	3	59	172	1,615
% Change	-10.3%	-18.4%	1.9%	0.7%	-62.5%	20.4%	-6.0%	-2.1%
Other								
2014	130	51	42	634	5	28	214	1,104
2015	125	31	40	588	4	35	222	1,045
% Change	-3.8%	-39.2%	-4.8%	-7.3%	-20.0%	25.0%	3.7%	-5.3%
Citywide								
2014	5,221	3,594	1,608	24,582	230	818	5,203	41,256
2015	5,126	3,139	1,541	24,666	213	849	5,523	41,057
% Change	-1.8%	-12.7%	-4.2%	0.3%	-7.4%	3.8%	6.2%	-0.5%

**TABLE 4 - Purchased Preventive Cases
Opened and Closed
January 2012 to December 2015**

Month	Opened Cases	Closed Cases
2012		
Jan-12	870	629
Feb-12	889	835
Mar-12	944	991
Apr-12	997	870
May-12	1,117	979
Jun-12	965	869
Jul-12	853	979
Aug-12	917	1,007
Sep-12	727	900
Oct-12	875	915
Nov-12	738	702
Dec-12	938	871
2013		
Jan-13	960	884
Feb-13	873	916
Mar-13	962	1,171
Apr-13	940	988
May-13	864	1,337
Jun-13	863	780
Jul-13	868	1,004
Aug-13	802	1,084
Sep-13	844	724
Oct-13	933	765
Nov-13	901	685
Dec-13	1,106	552
2014		
Jan-14	983	640
Feb-14	987	679
Mar-14	1,146	874
Apr-14	1,074	896
May-14	1,042	888
Jun-14	976	762
Jul-14	1,050	1,077
Aug-14	944	943
Sep-14	987	705
Oct-14	1,050	819
Nov-14	818	638
Dec-14	1,268	721
2015		
Jan-15	826	716
Feb-15	1,001	590
Mar-15	1,270	686
Apr-15	1,103	743
May-15	1,048	842
Jun-15	1,196	797
Jul-15	967	1,070
Aug-15	965	891
Sep-15	827	847
Oct-15	879	772
Nov-15	859	652
Dec-15	1,122	707

**Table 5 - Referrals to Purchased Preventive Services by Source
January 2012 to December 2015**

Month	Total Referrals	Division of Child Protection	Foster Care Agencies	PPRS Transfer	School	Self	Other Sources*
2012							
Jan-12	1,431	66.5%	0.7%	8.5%	3.6%	3.8%	17.0%
Feb-12	1,043	78.2%	1.1%	9.0%	1.9%	6.7%	3.1%
Mar-12	1,525	73.6%	0.9%	6.0%	1.8%	3.9%	13.8%
Apr-12	1,370	72.8%	1.0%	9.4%	1.2%	4.2%	11.4%
May-12	1,463	70.9%	1.0%	7.6%	1.1%	4.4%	15.0%
Jun-12	1,279	73.8%	0.5%	5.9%	1.0%	4.7%	14.2%
Jul-12	1,308	77.4%	1.2%	7.0%	0.3%	3.7%	10.5%
Aug-12	1,391	74.0%	0.9%	11.7%	0.3%	2.9%	10.2%
Sep-12	1,110	70.5%	1.9%	9.6%	1.2%	5.0%	11.9%
Oct-12	1,159	61.1%	1.4%	12.6%	2.7%	4.9%	17.3%
Nov-12	1,106	67.0%	1.0%	9.9%	2.2%	4.7%	15.3%
Dec-12	1,206	68.7%	0.8%	5.8%	2.7%	5.6%	16.4%
CY 2012	15,391	71.3%	1.0%	8.5%	1.6%	4.5%	13.1%
2013							
Jan-13	1,474	74.1%	1.2%	7.3%	1.2%	3.7%	12.5%
Feb-13	1,308	75.8%	1.1%	8.0%	1.6%	2.9%	10.6%
Mar-13	1,270	73.5%	1.2%	6.7%	2.4%	3.9%	12.3%
Apr-13	1,421	77.9%	0.8%	7.4%	0.9%	3.0%	10.1%
May-13	1,320	68.4%	0.5%	10.2%	1.5%	3.8%	15.5%
Jun-13	953	69.2%	1.2%	9.4%	2.6%	5.0%	12.6%
Jul-13	1,014	66.3%	1.9%	14.4%	1.6%	3.9%	11.9%
Aug-13	1,212	70.5%	0.7%	11.8%	0.7%	4.7%	11.6%
Sep-13	1,262	64.0%	2.1%	11.3%	1.7%	6.7%	14.2%
Oct-13	1,319	61.0%	1.1%	9.0%	2.9%	7.5%	18.5%
Nov-13	1,249	55.9%	1.6%	10.5%	4.6%	9.2%	18.3%
Dec-13	1,464	62.2%	1.2%	8.2%	2.3%	9.2%	17.0%
CY 2013	15,266	68.3%	1.2%	9.4%	2.0%	5.3%	13.8%
2014							
Jan-14	1,537	70.0%	1.2%	6.6%	2.3%	5.8%	14.2%
Feb-14	1,334	69.7%	0.8%	8.4%	1.7%	5.5%	13.9%
Mar-14	1,612	70.0%	1.4%	8.6%	1.6%	5.3%	13.1%
Apr-14	1,525	70.2%	0.9%	7.6%	2.1%	3.7%	15.4%
May-14	1,580	74.4%	0.7%	8.3%	1.4%	5.2%	10.0%
Jun-14	1,550	78.6%	1.2%	6.3%	1.2%	3.2%	9.4%
Jul-14	1,659	79.6%	1.5%	6.7%	0.4%	4.2%	7.6%
Aug-14	1,395	72.2%	1.6%	10.8%	0.3%	4.9%	10.3%
Sep-14	1,597	49.4%	1.5%	7.6%	0.3%	4.5%	36.8%
Oct-14	1,634	68.2%	1.9%	10.0%	1.2%	4.6%	14.1%
Nov-14	1,311	66.4%	0.9%	14.3%	2.4%	3.9%	12.1%
Dec-14	1,785	71.1%	1.4%	8.8%	2.9%	4.8%	11.0%
CY 2014	18,519	70.1%	1.3%	8.6%	1.5%	4.6%	14.0%
2015							
Jan-15	1,430	74.4%	1.6%	8.7%	1.8%	3.8%	9.7%
Feb-15	1,538	76.5%	0.8%	8.1%	1.8%	4.7%	8.2%
Mar-15	1,798	74.6%	0.9%	7.3%	1.6%	4.8%	10.8%
Apr-15	1,719	78.2%	1.3%	7.2%	0.6%	3.5%	9.1%
May-15	1,561	77.2%	1.0%	5.1%	1.5%	4.5%	10.8%
Jun-15	1,716	77.4%	1.1%	7.7%	1.2%	3.5%	9.1%
Jul-15	1,511	79.6%	0.9%	7.2%	0.3%	3.8%	8.2%
Aug-15	1,418	79.3%	2.2%	7.8%	0.2%	3.1%	7.5%
Sep-15	1,209	72.1%	2.8%	10.4%	0.5%	5.5%	8.6%
Oct-15	1,338	70.4%	1.9%	8.3%	2.1%	5.8%	11.6%
Nov-15	1,220	68.2%	1.8%	9.6%	1.4%	6.2%	12.8%
Dec-15	1,526	73.5%	1.6%	8.0%	2.0%	5.0%	9.9%

*Other Community Sources includes the Department of Homeless Services, Family Court, FAP, Hospitals and Medical facilities, the NYC Housing Authority, PINS/DAS, Probation, and Sponsor Agencies.