

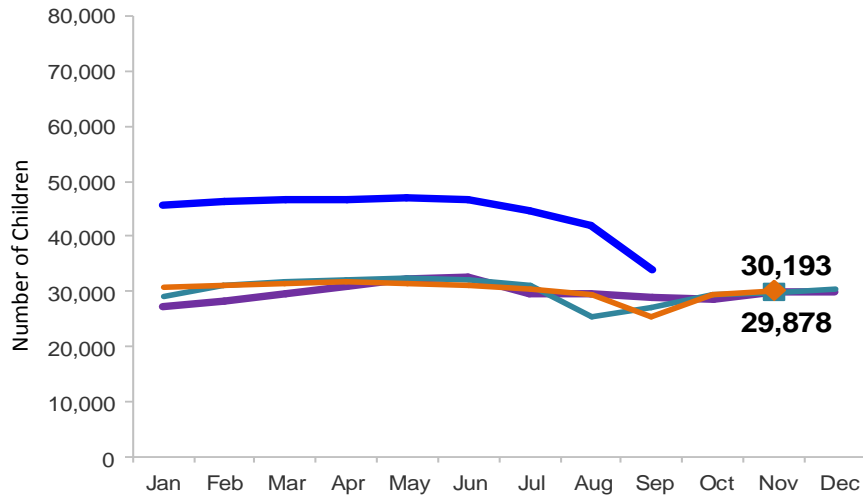


# Flash

December 2015

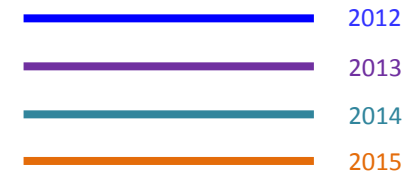
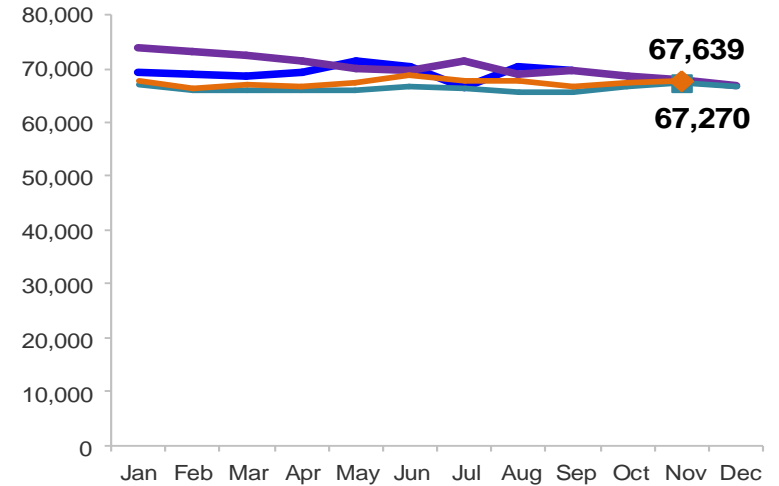
### Children Enrolled in Contracted EarlyLearn Programs

January 2012 – November 2015 (End of Month)



### Children Using Vouchers for Child Care

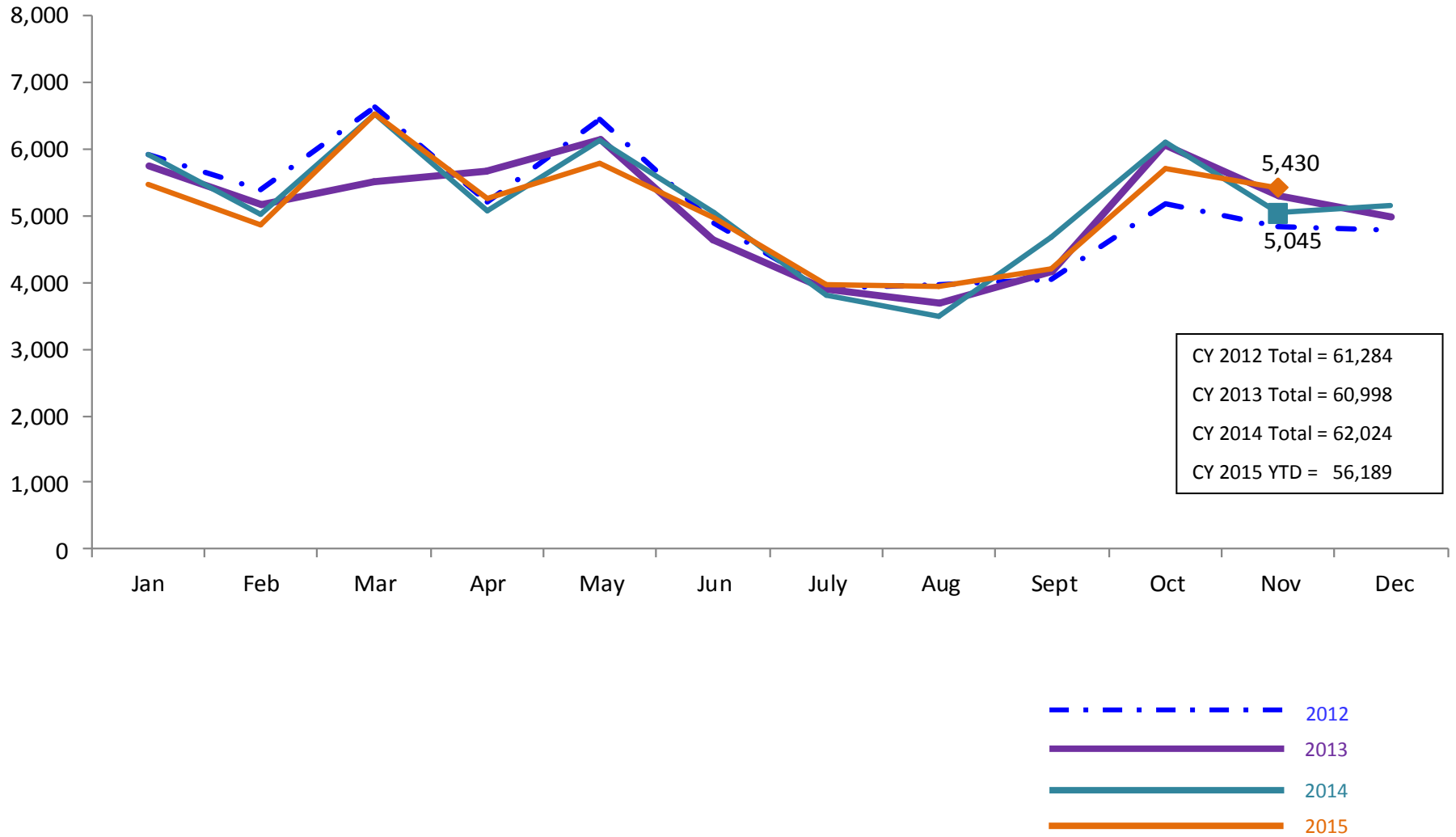
January 2012 – November 2015 (End of Month)



Note: Beginning October 1, 2012 ACS converted its early care and education system to a new model, EarlyLearn NYC. Enrollment data for the transitional months of October – December 2012 are not available because contractors were in the midst of implementing the data collection systems.

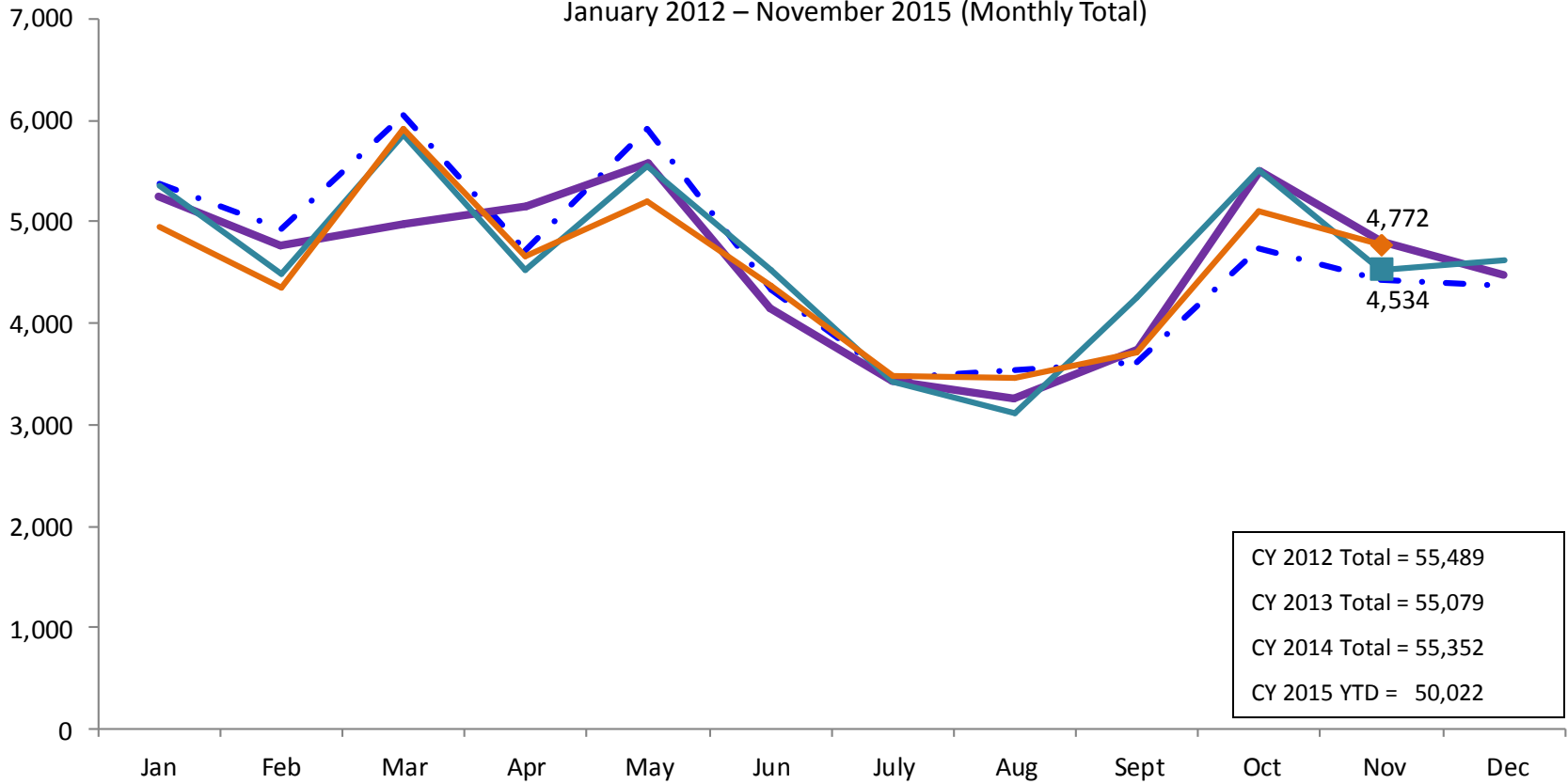
### SCR Intakes

January 2012 – November 2015 (Monthly Total)

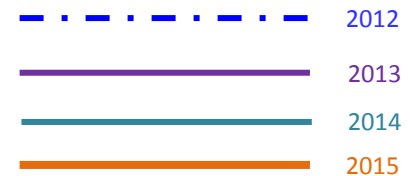


### SCR Consolidated Investigations

January 2012 – November 2015 (Monthly Total)

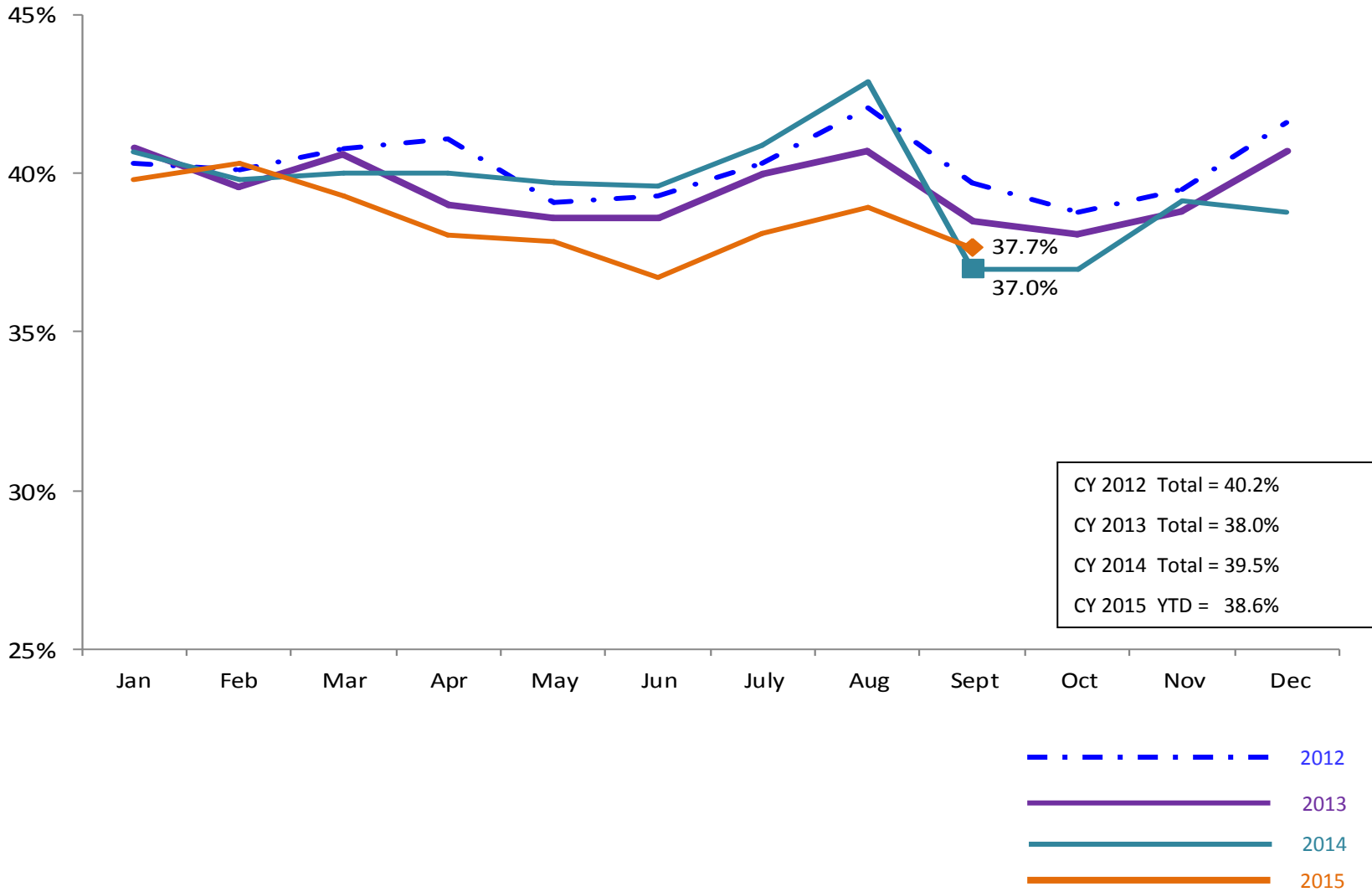


CY 2012 Total = 55,489  
 CY 2013 Total = 55,079  
 CY 2014 Total = 55,352  
 CY 2015 YTD = 50,022



### SCR Investigation Indication Rate

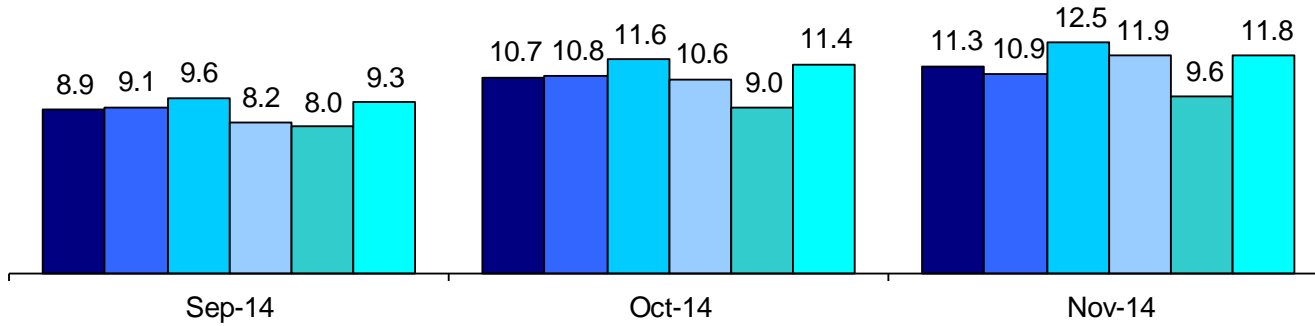
January 2012 – September 2015



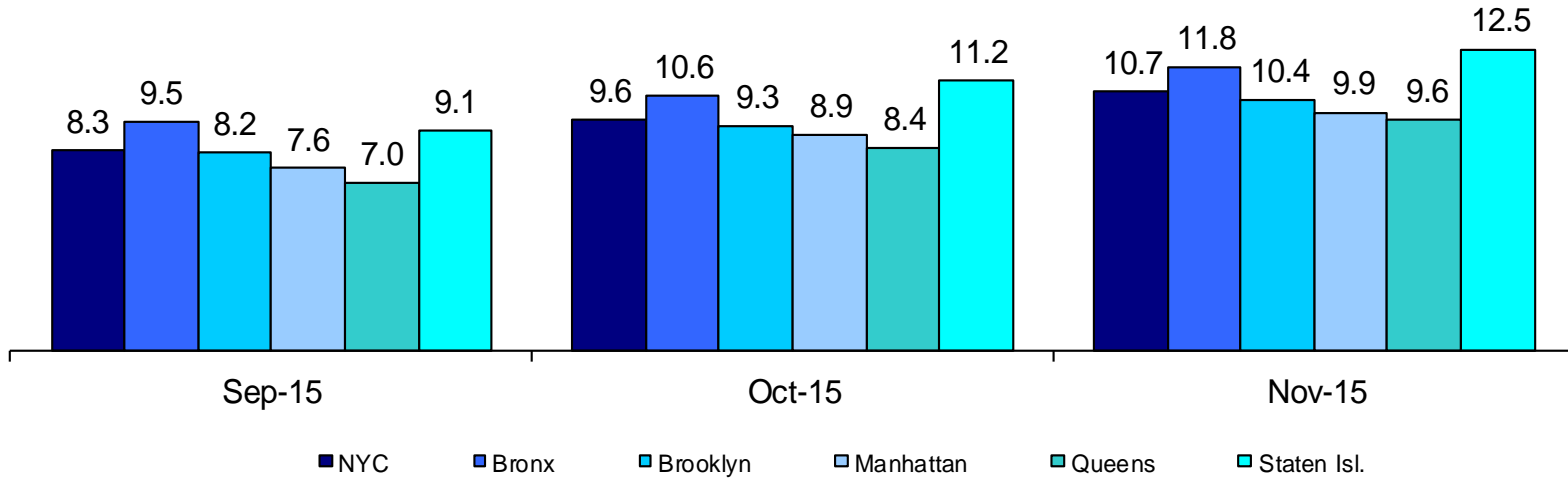
### Average P/D Combined Caseload\*

September 2014 – November 2014 & September 2015 – November 2015

2014



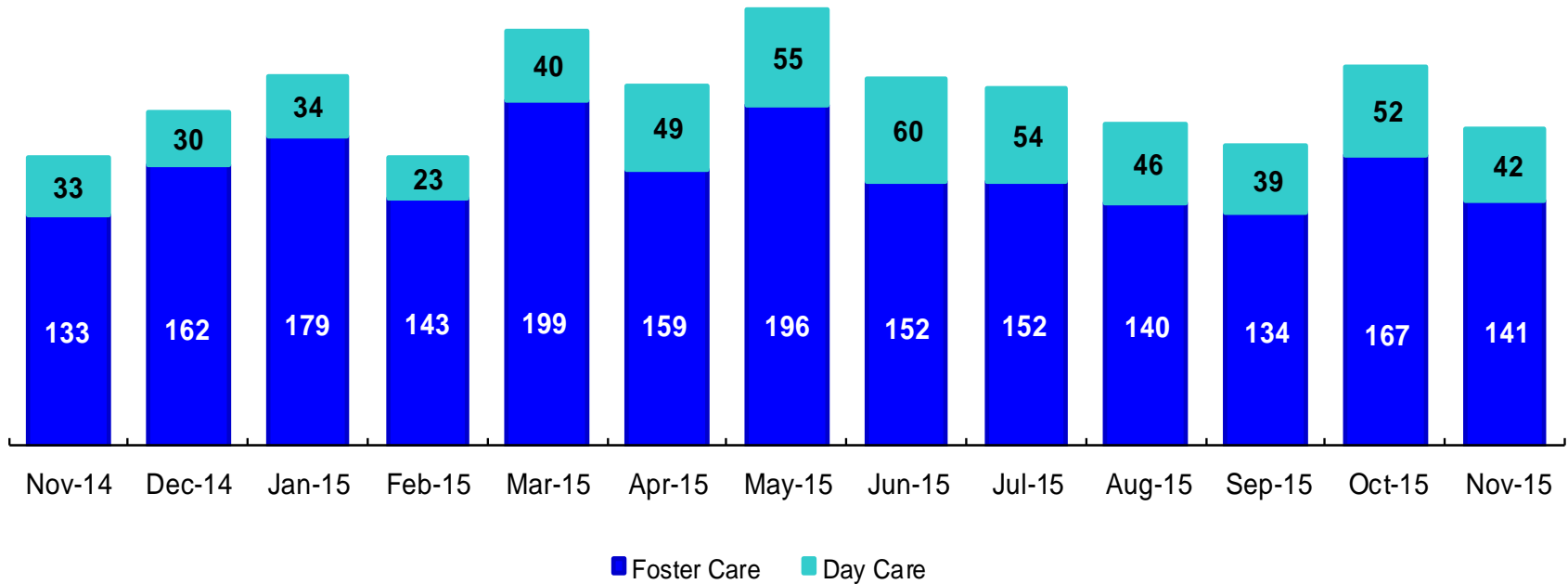
2015



\* Caseloads are of protective/diagnostic caseworkers only and exclude the caseloads carried by Level I and Level II Supervisors.

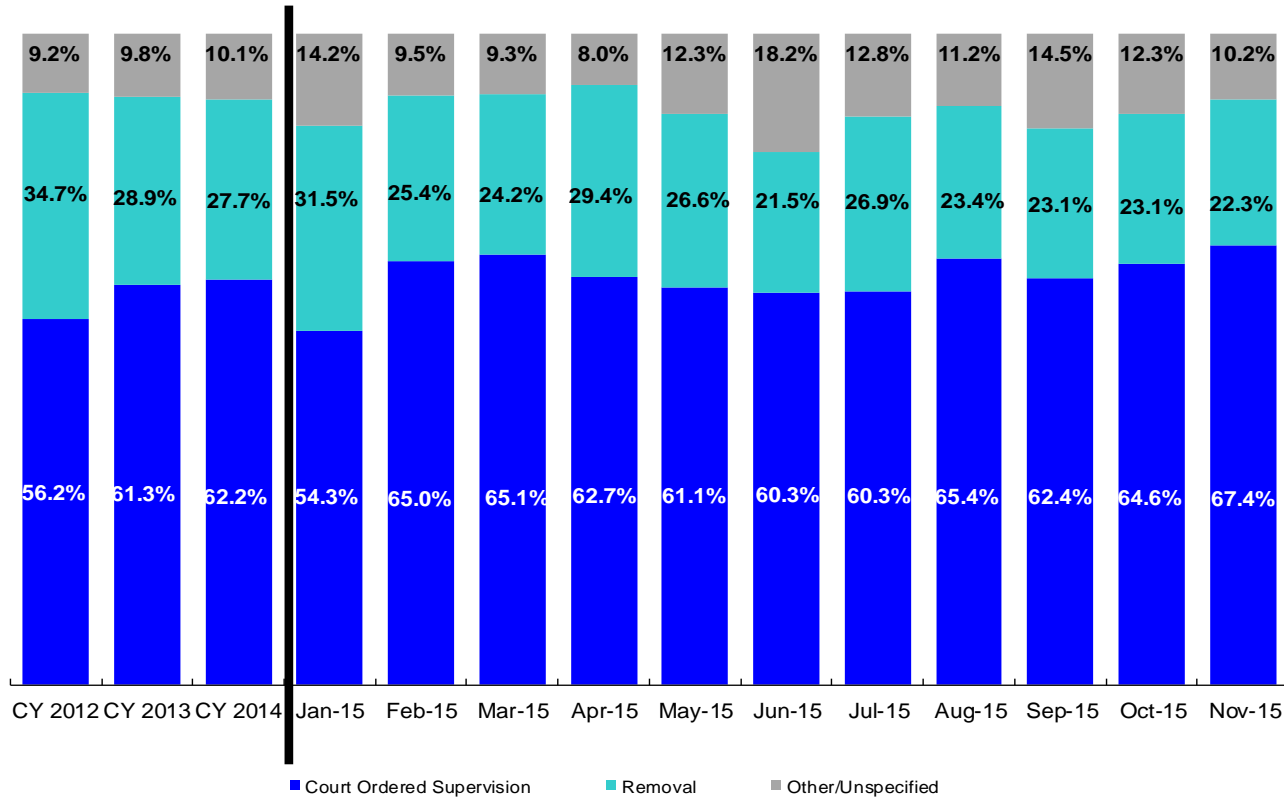
### OSI Investigations by Program

November 2014 – November 2015



	Nov 2014	Dec 2014	Jan 2015	Feb 2015	Mar 2015	Apr 2015	May 2015	Jun 2015	Jul 2015	Aug 2015	Sep 2015	Oct 2015	Nov 2015
Number of Investigations	166	192	213	166	239	208	251	212	206	186	173	219	183

### Article 10 Total Filings & Filing Outcomes, CY 2012 – November 2015

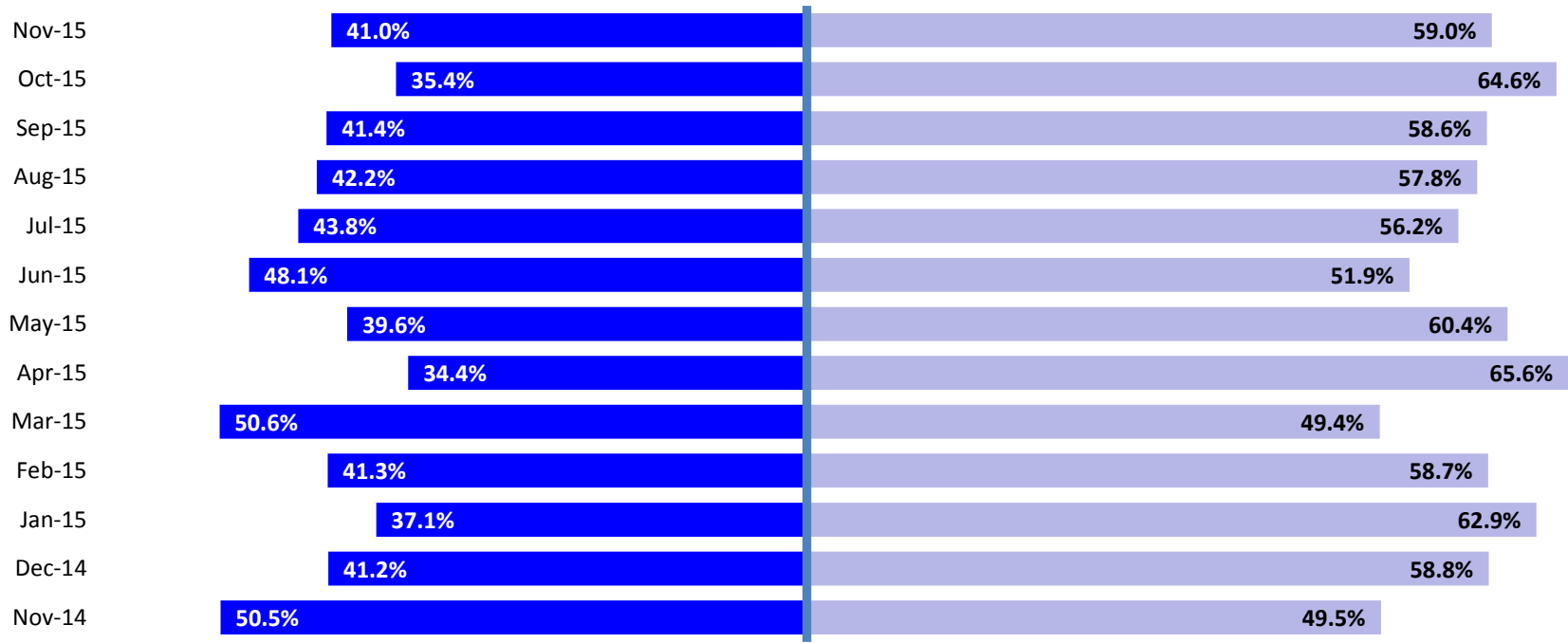


	CY 2012	CY 2013	CY 2014	Jan 2015	Feb 2015	Mar 2015	Apr 2015	May 2015	Jun 2015	July 2015	Aug 2015	Sep 2015	Oct 2015	Nov 2015
Article 10 Filings	8,913	9,318	9,900	812	924	1,012	892	940	959	875	769	752	772	743

Note: The category "Other/Unspecified" includes released with no supervision, no order issued and no outcome specified. Outcomes of cases heard the next day are not captured in this report



### Article 10 Filing Removals, November 2014 – November 2015

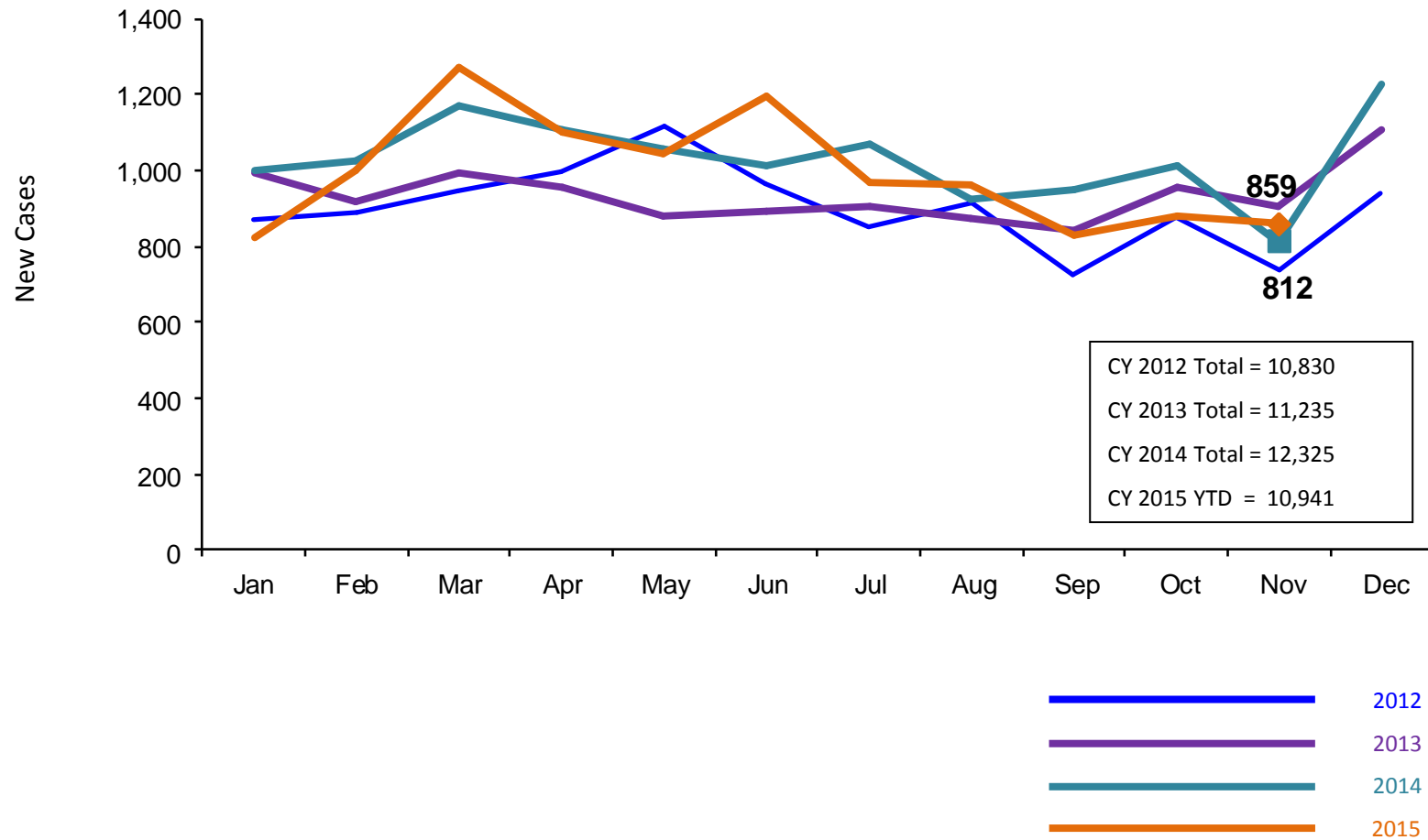


■ Pre-Filing Emergency Removals (court approved at initial hearing)    ■ Post-Filing Removals (court ordered at initial hearing)

	Nov 2014	Dec 2014	Jan 2015	Feb 2015	Mar 2015	Apr 2015	May 2015	Jun 2015	July 2015	Aug 2015	Sep 2015	Oct 2015	Nov 2015
Number of Removals	194	262	256	235	245	262	250	206	235	180	174	178	166

### New Preventive Cases\*

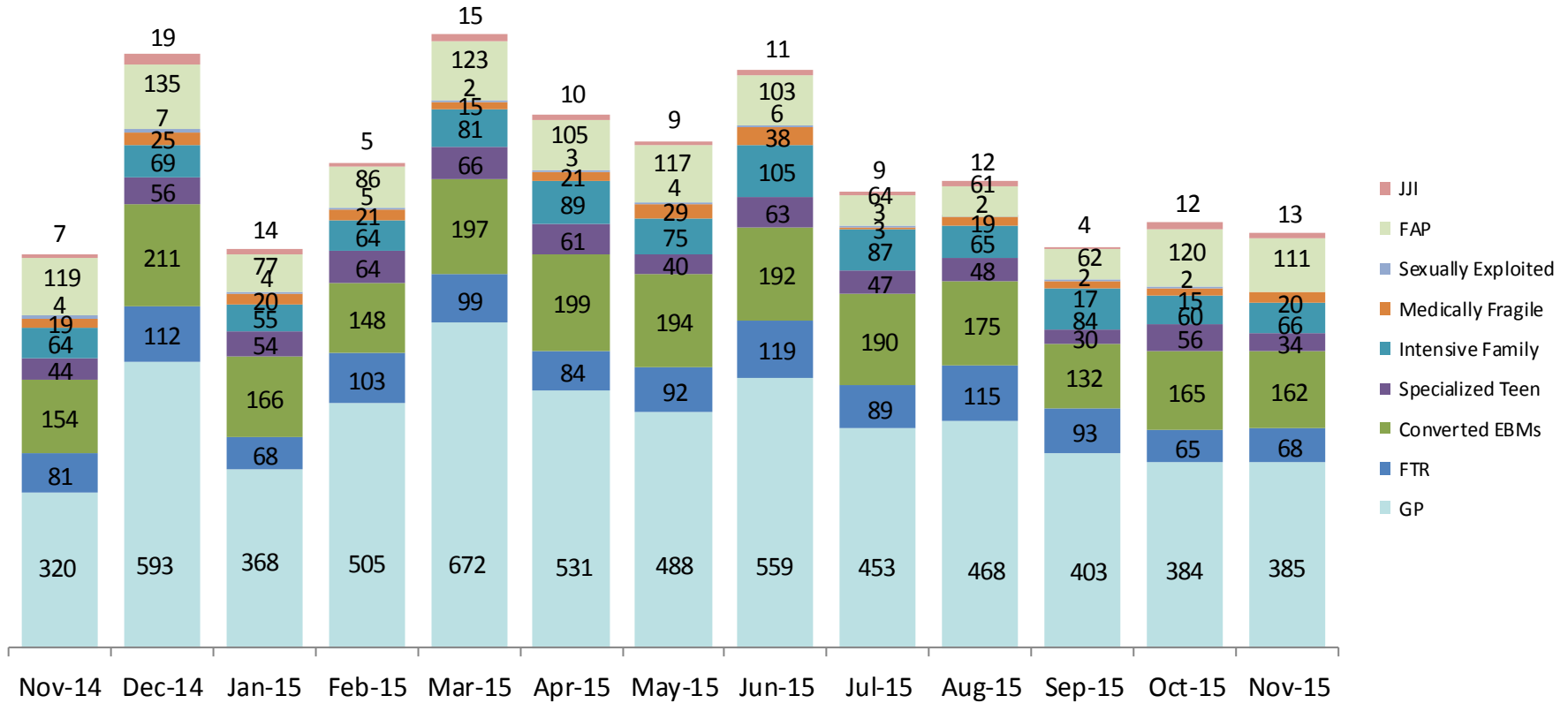
January 2012 – November 2015



\*Notes: 1) New preventive cases do not include cases transferred from one preventive program to another. 2) See Pages 33 and 34 of the Appendix for supporting data.

### New Preventive Cases\* by Program Type

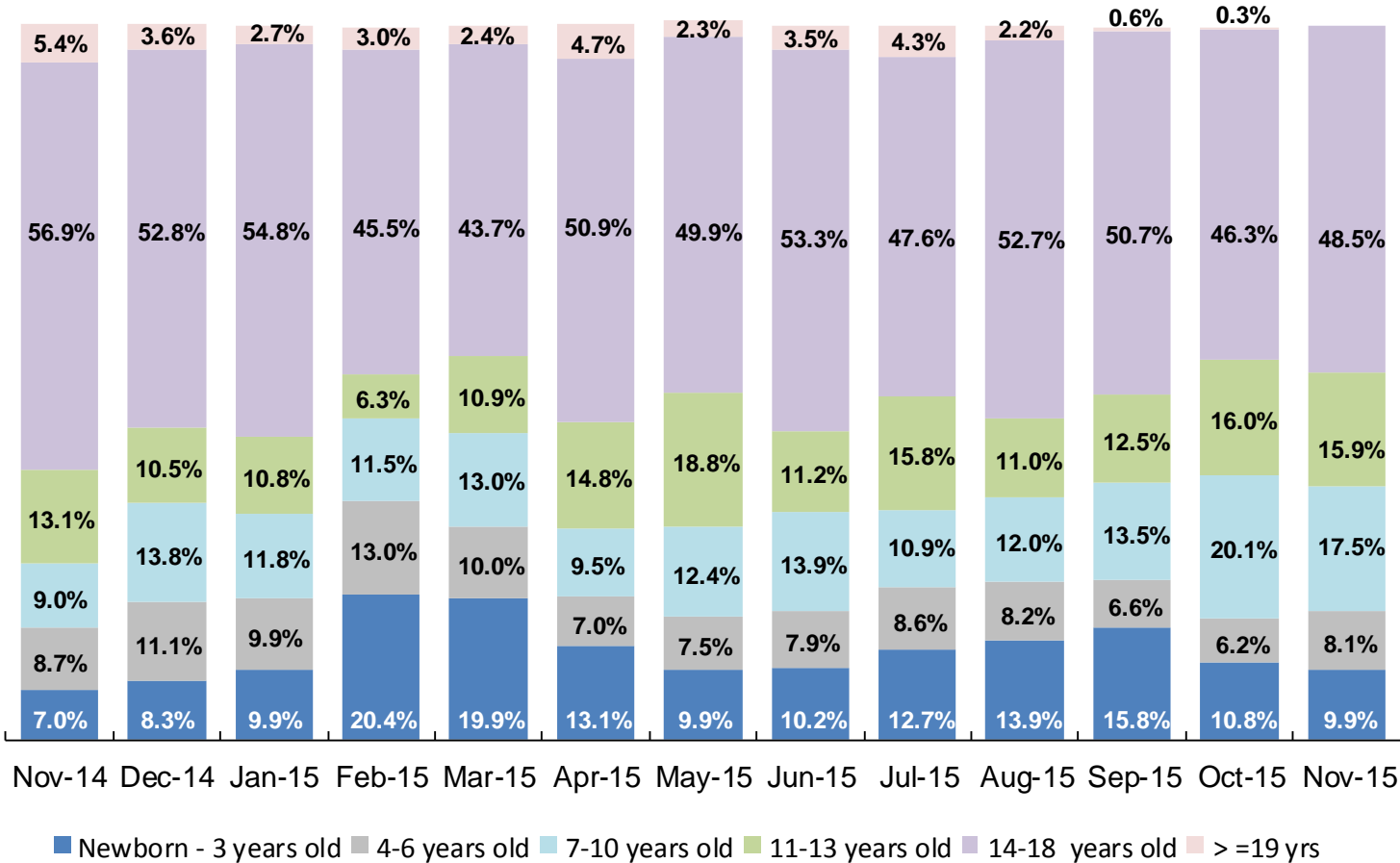
November 2014 – November 2015



	Nov 2014	Dec 2014	Jan 2015	Feb 2015	Mar 2015	Apr 2015	May 2015	Jun 2015	Jul 2015	Aug 2015	Sep 2015	Oct 2015	Nov 2015
Number of New Preventive Cases	812	1,227	826	1,001	1,270	1,103	1,048	1,196	967	965	827	879	859

Note: New preventive cases do not include cases transferred from one preventive program to another.

### Average Pre-Placement Residential Monthly Population

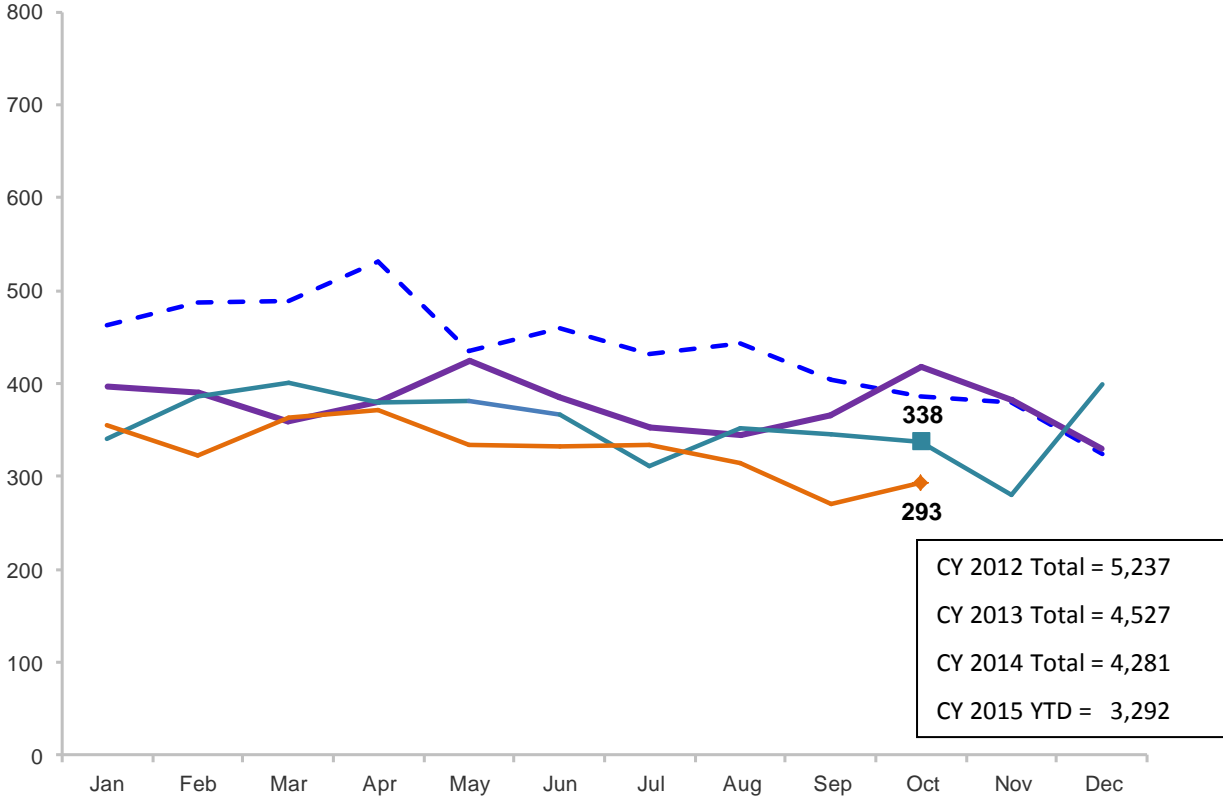


	Nov 2014	Dec 2014	Jan 2015	Feb 2015	Mar 2015	Apr 2015	May 2015	Jun 2015	July 2015	Aug 2015	Sep 2015	Oct 2015	Nov 2015
Average Number of Children	48	44	51	39	50	52	60	50	42	40	36	45	40

\*Beginning in December 2014 the pre-placement residential population includes children at the Children’s Center and at the MercyFirst Reception Center.

### Total Monthly Placements

January 2012 – October 2015

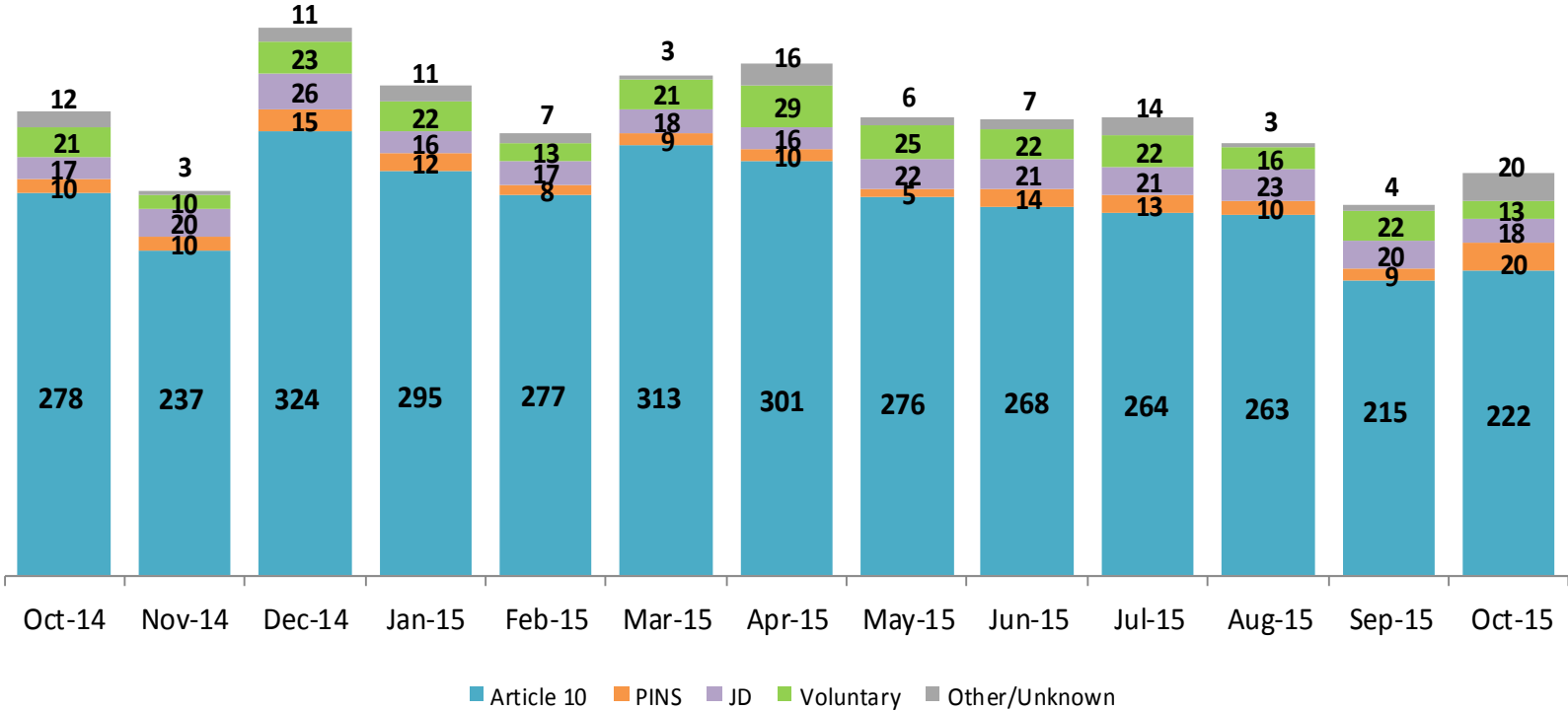


CY 2012 Total = 5,237  
CY 2013 Total = 4,527  
CY 2014 Total = 4,281  
CY 2015 YTD = 3,292

- 2012
- 2013
- 2014
- 2015

### Reason for Initial Placements into Foster Care

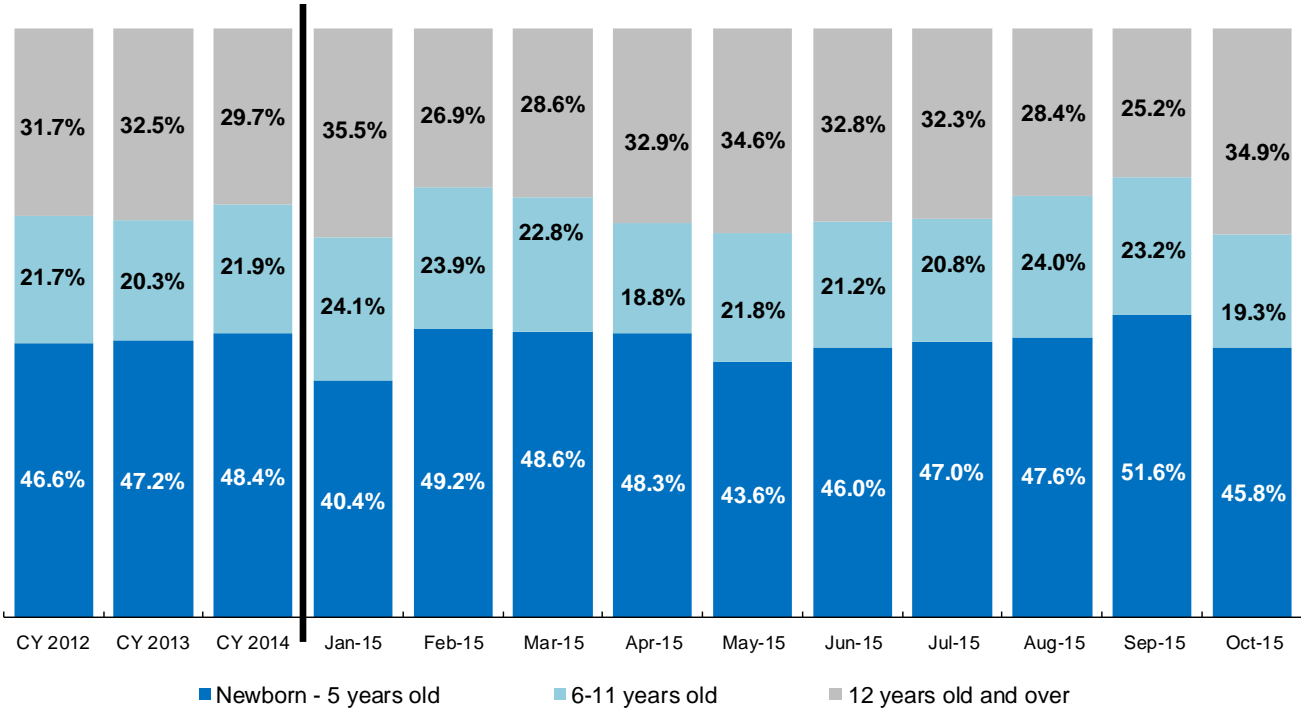
October 2014 – October 2015



	Oct 2014	Nov 2014	Dec 2014	Jan 2015	Feb 2015	Mar 2015	Apr 2015	May 2015	Jun 2015	Jul 2015	Aug 2015	Sep 2015	Oct 2015
Number of Placements	338	280	399	356	322	364	372	334	332	334	315	270	293

### Placements\* by Age

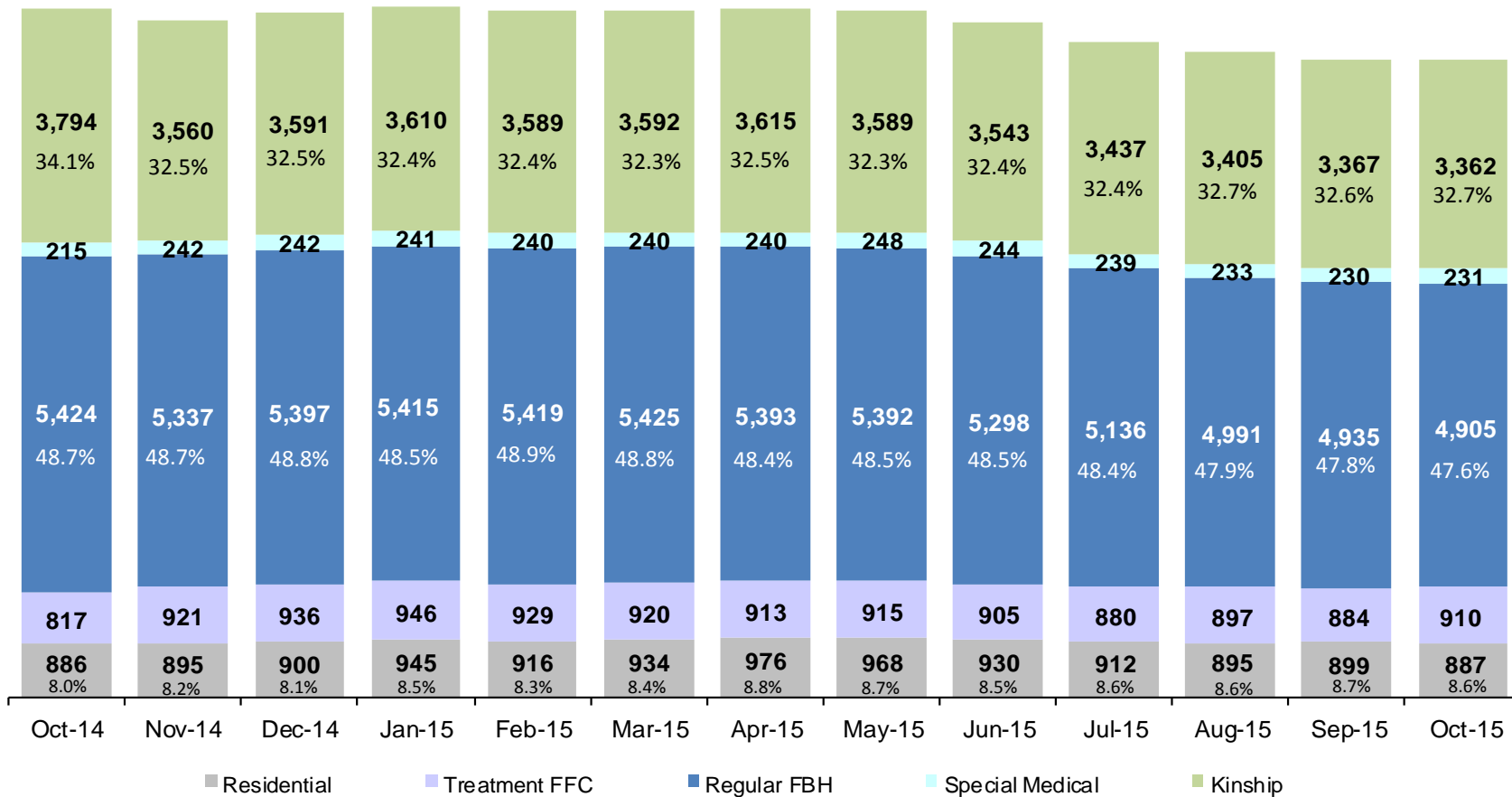
CY 2012 - October 2015



	CY 2012	CY 2013	CY 2014	Jan 2015	Feb 2015	Mar 2015	Apr 2015	May 2015	Jun 2015	Jul 2015	Aug 2015	Sep 2015	Oct 2015
Placements (without JDs)	4,823	4,170	3,983	344	305	346	356	312	311	313	292	250	275

\*Excludes JD placements.

### Children in Foster Care\* October 2014 – October 2015 (end of month)

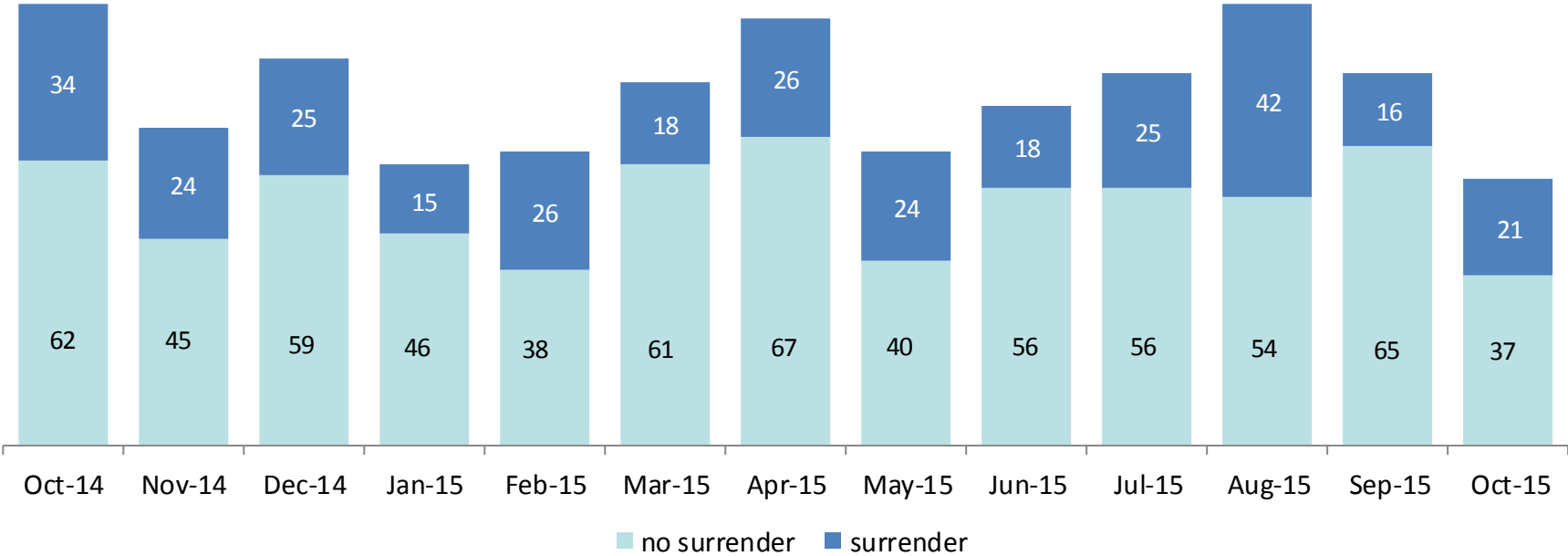


	Oct 2014	Nov 2014	Dec 2014	Jan 2015	Feb 2015	Mar 2015	Apr 2015	May 2015	Jun 2015	Jul 2015	Aug 2015	Sep 2015	Oct 2015
Number in Foster Care	11,136	10,955	11,066	11,157	11,093	11,111	11,137	11,112	10,920	10,604	10,421	10,315	10,295

\*Excludes JD placements and includes approximately 400 young children who are living in foster homes or residential care facilities with their mothers who are in foster care (8D children).

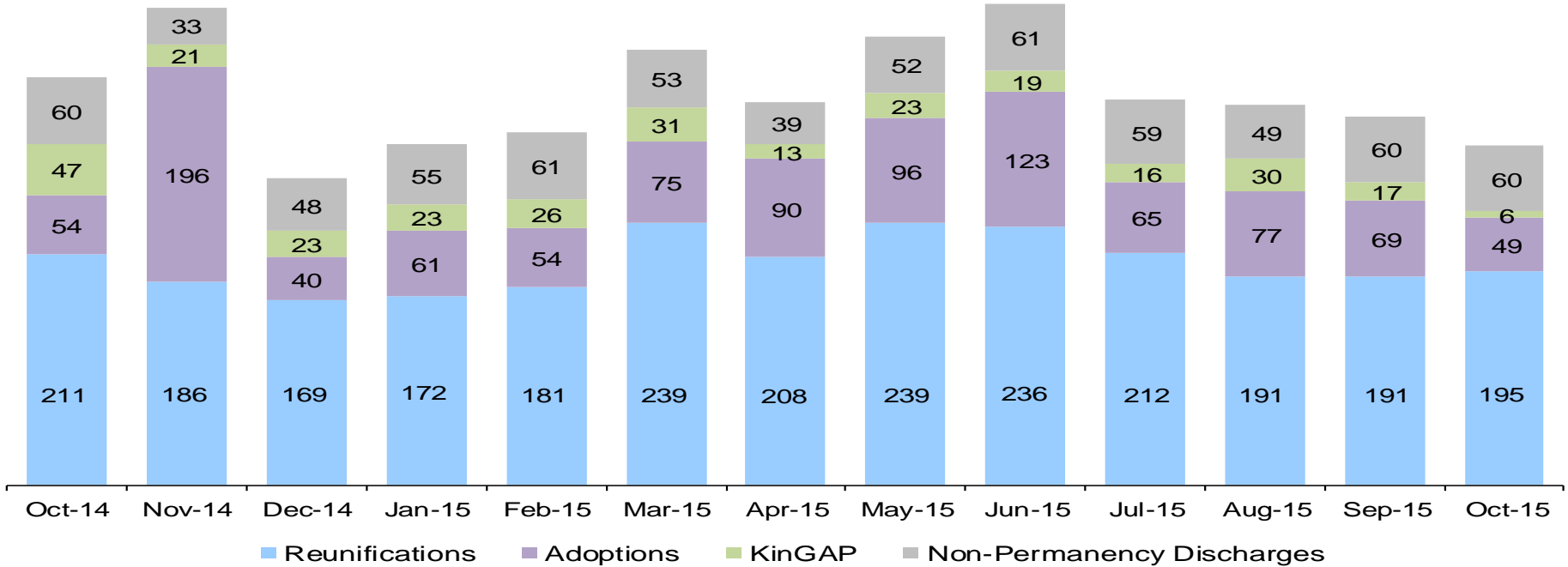


### Children Freed for Adoption, Surrender by at Least One Parent October 2014 – October 2015



	Oct 2014	Nov 2014	Dec 2014	Jan 2015	Feb 2015	Mar 2015	Apr 2015	May 2015	Jun 2015	Jul 2015	Aug 2015	Sep 2015	Oct 2015
Number Freed for Adoption	96	69	84	61	64	79	93	64	74	81	96	81	58

### Permanency and Non-Permanency\* Discharges from Foster Care\*\* October 2014 – October 2015



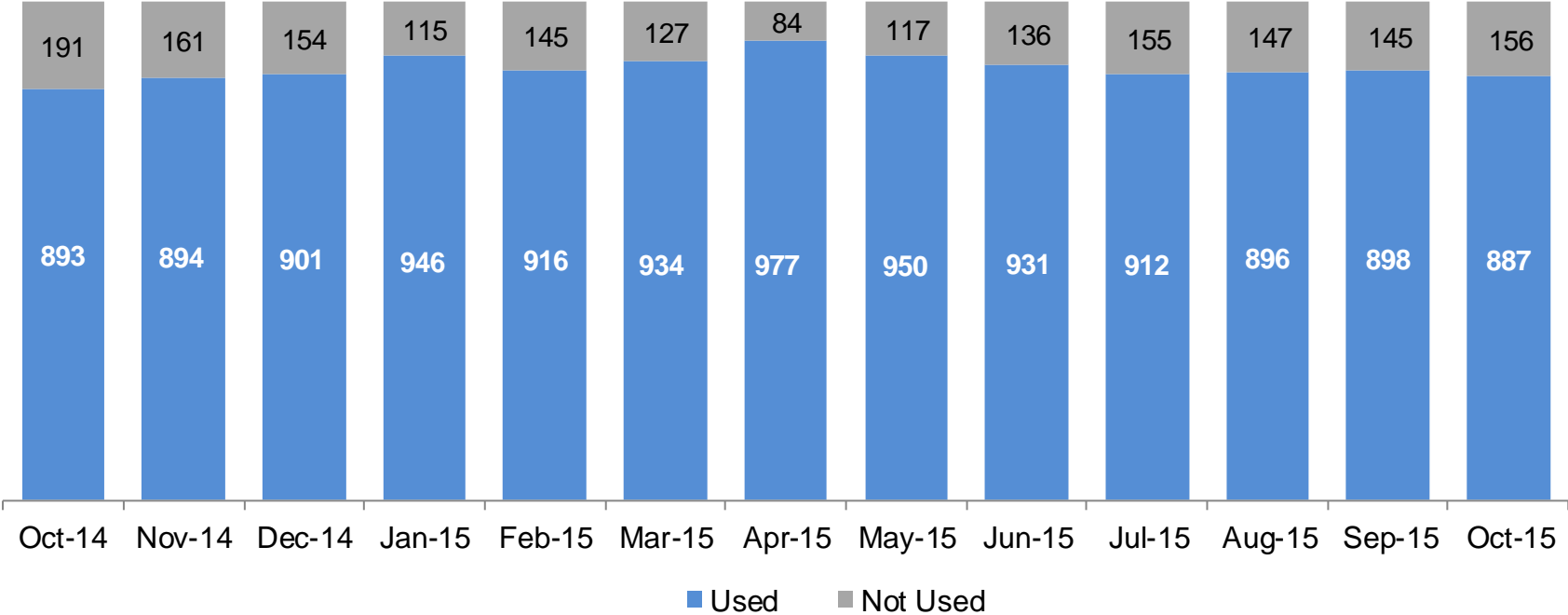
	Oct 2014	Nov 2014	Dec 2014	Jan 2015	Feb 2015	Mar 2015	Apr 2015	May 2015	Jun 2015	Jul 2015	Aug 2015	Sep 2015	Oct 2015
Number of Discharges	372	436	280	311	322	398	350	410	439	352	347	337	310

\*Non-permanency discharges include AWOL, APPLA , other discharge destinations such as psychiatric institutions and correctional facilities and discharges with unspecified destinations.

\*\*Excludes discharges of youth who entered care as a JD.

### Residential Care Capacity and Utilization

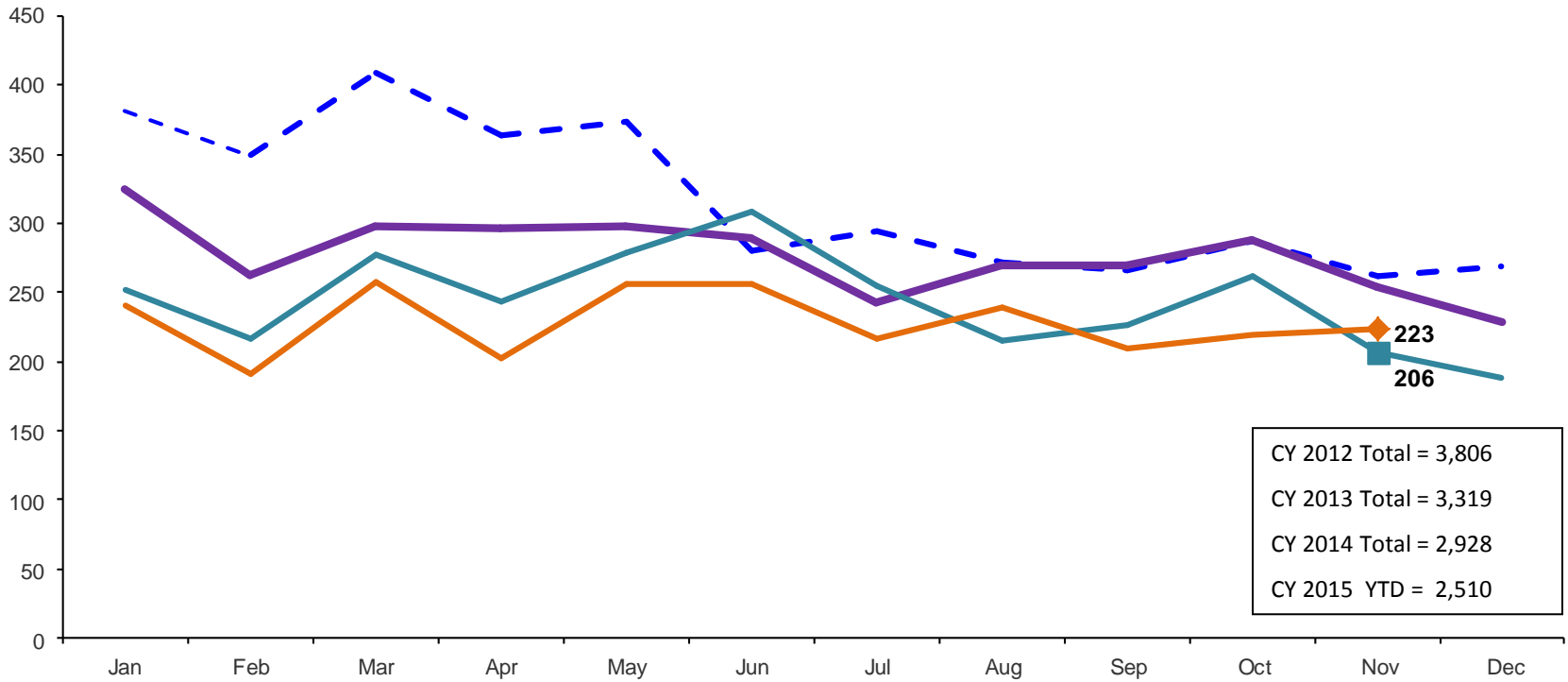
October 2014 – October 2015



	Oct 2014	Nov 2014	Dec 2014	Jan 2015	Feb 2015	Mar 2015	Apr 2015	May 2015	Jun 2015	Jul 2015	Aug 2015	Sep 2015	Oct 2015
Capacity	1,084	1,055	1,055	1,061	1,061	1,061	1,061	1,067	1,067	1,067	1,043	1,043	1,043

### Total Monthly Admissions to Detention

February 2012 – November 2015 (Monthly Total)

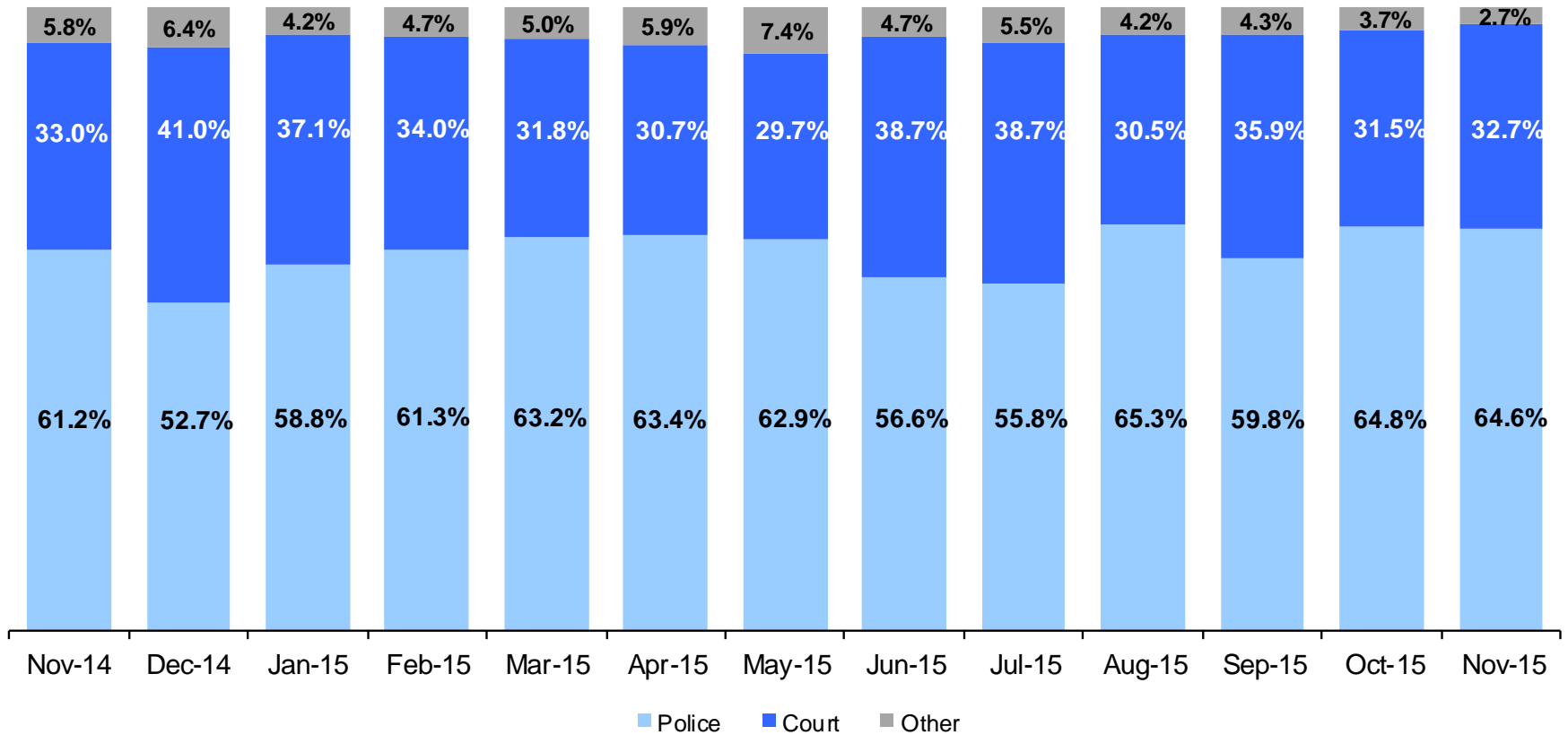


CY 2012 Total = 3,806  
 CY 2013 Total = 3,319  
 CY 2014 Total = 2,928  
 CY 2015 YTD = 2,510



### Admit Authority on Admissions

November 2014 – November 2015 (Monthly Total)



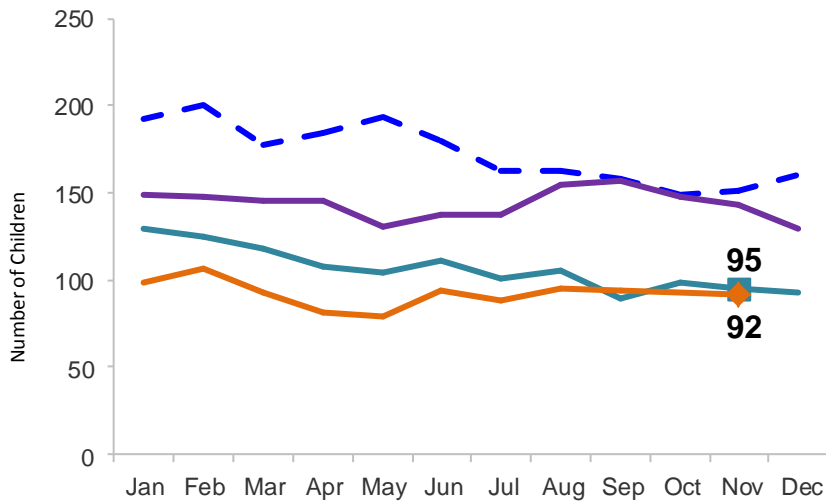
	Nov 2014	Dec 2014	Jan 2015	Feb 2015	Mar 2015	Apr 2015	May 2015	Jun 2015	July 2015	Aug 2015	Sep 2015	Oct 2015	Nov 2015
Number of Admissions	206	188	240	191	258	202	256	256	217	239	209	219	223

Note: Other Admit Authority includes the Sheriff Department, Department of Corrections and ACS.

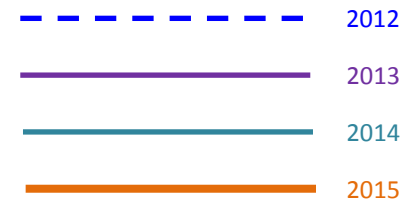
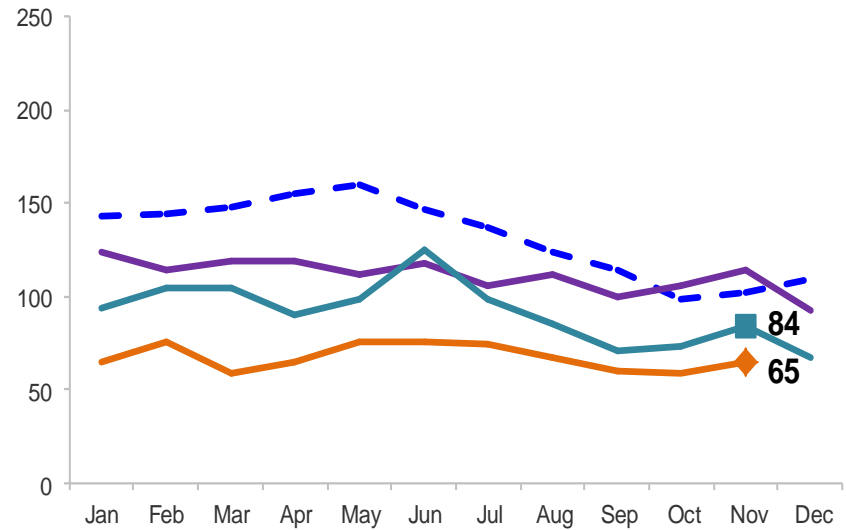
### Monthly Average Daily Population

January 2012 – November 2015

#### Secure Detention

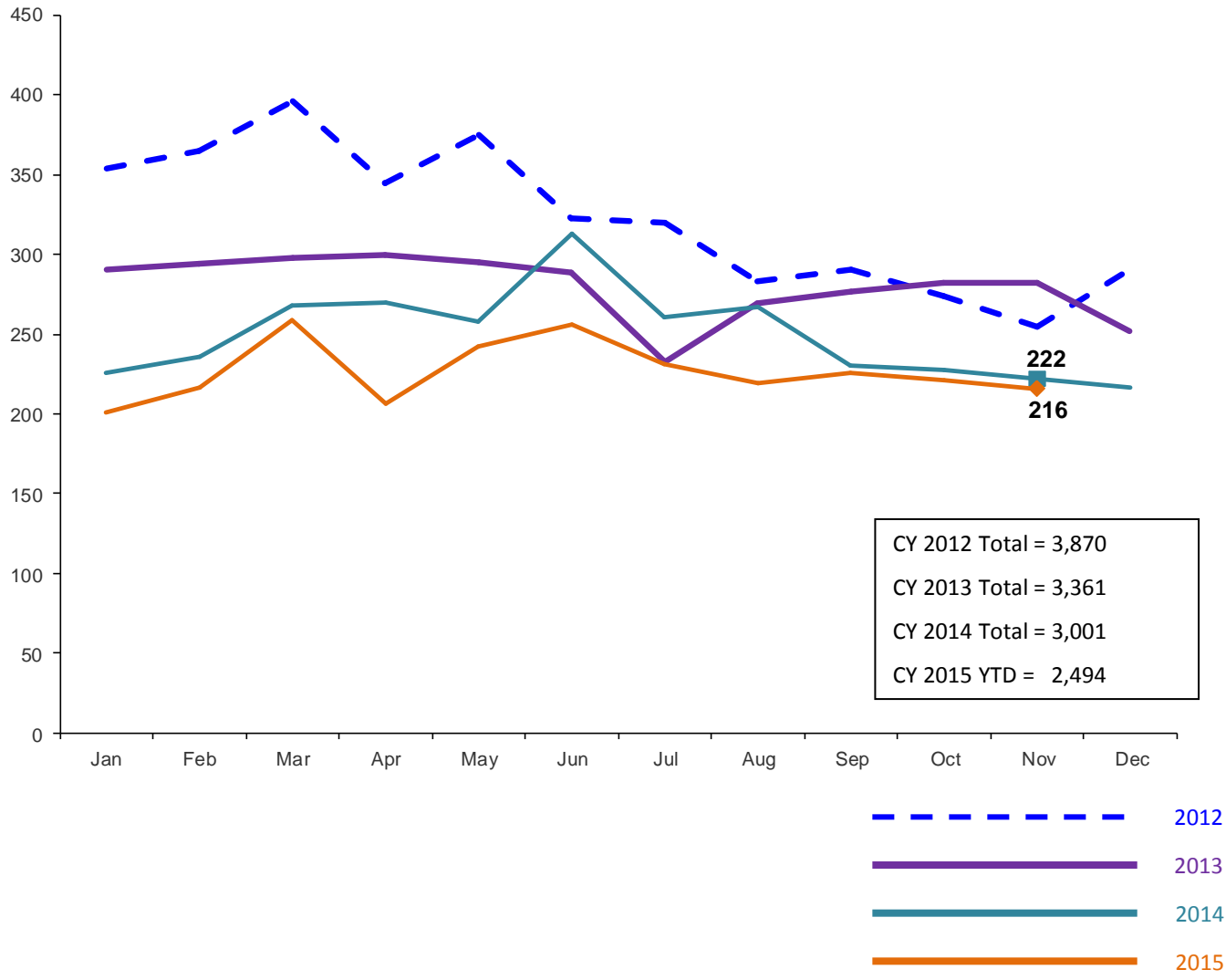


#### Non-Secure Detention



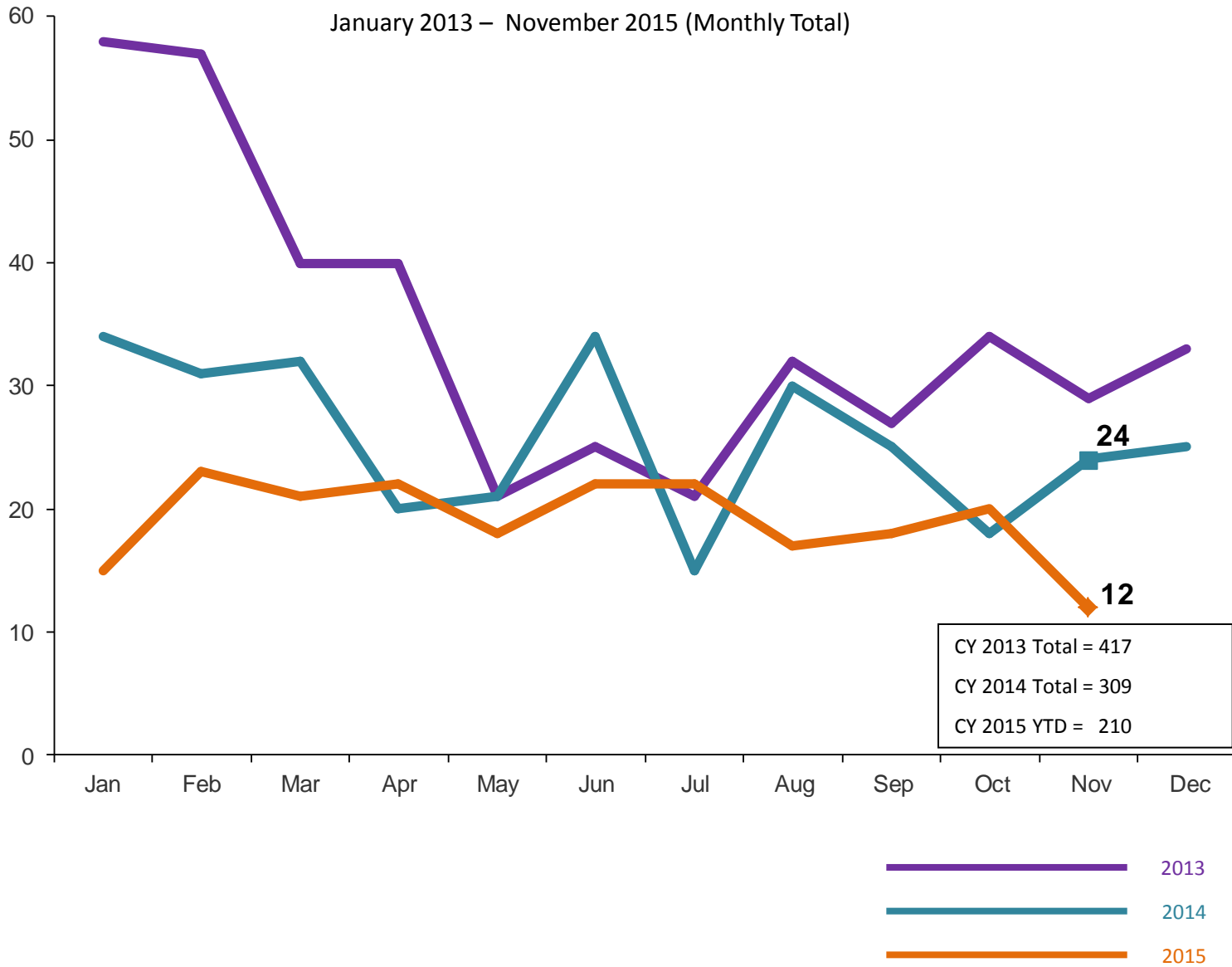
### Total Monthly Releases from Detention

January 2012 – November 2015 (Monthly Total)



### ACS NSP Intakes

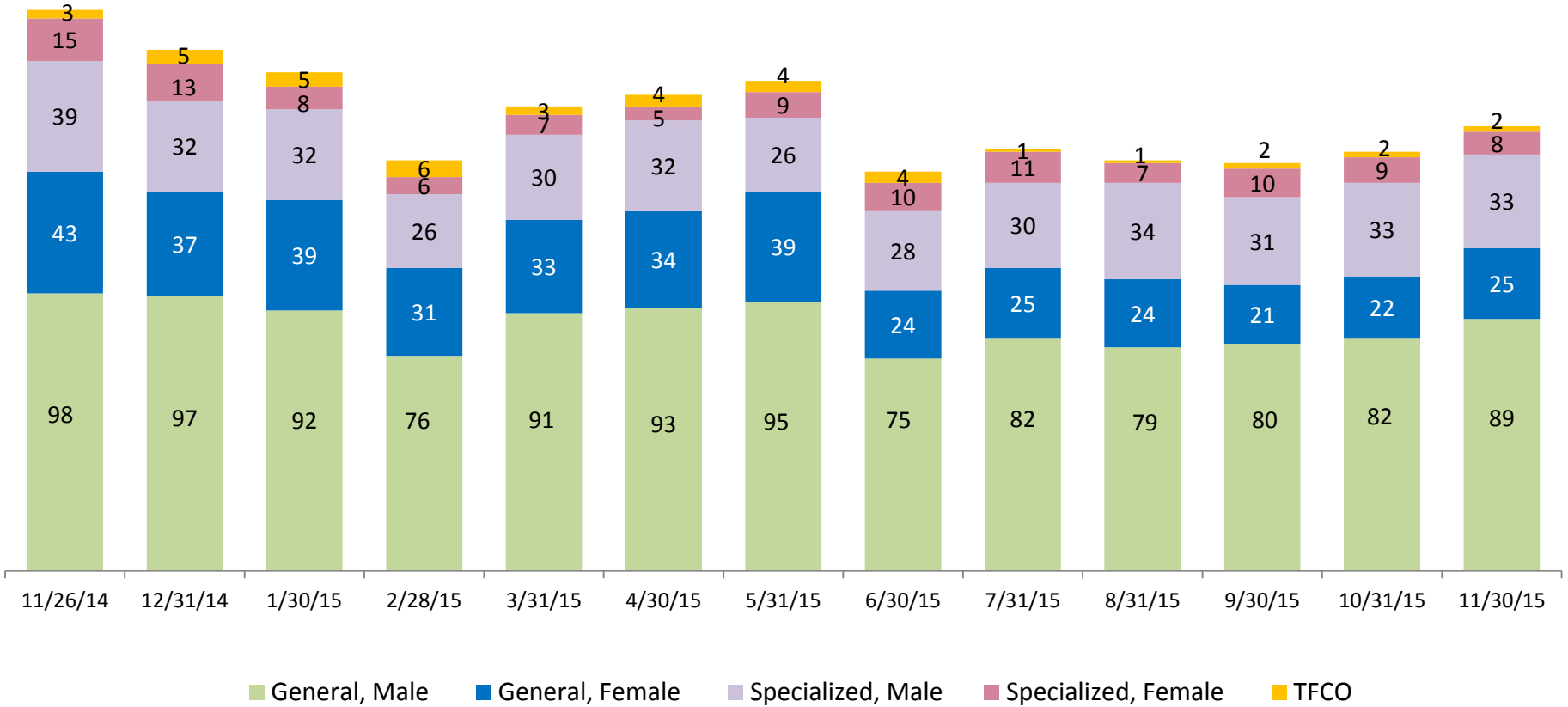
January 2013 – November 2015 (Monthly Total)





### ACS Non-Secure Placement, in 24-hour Care

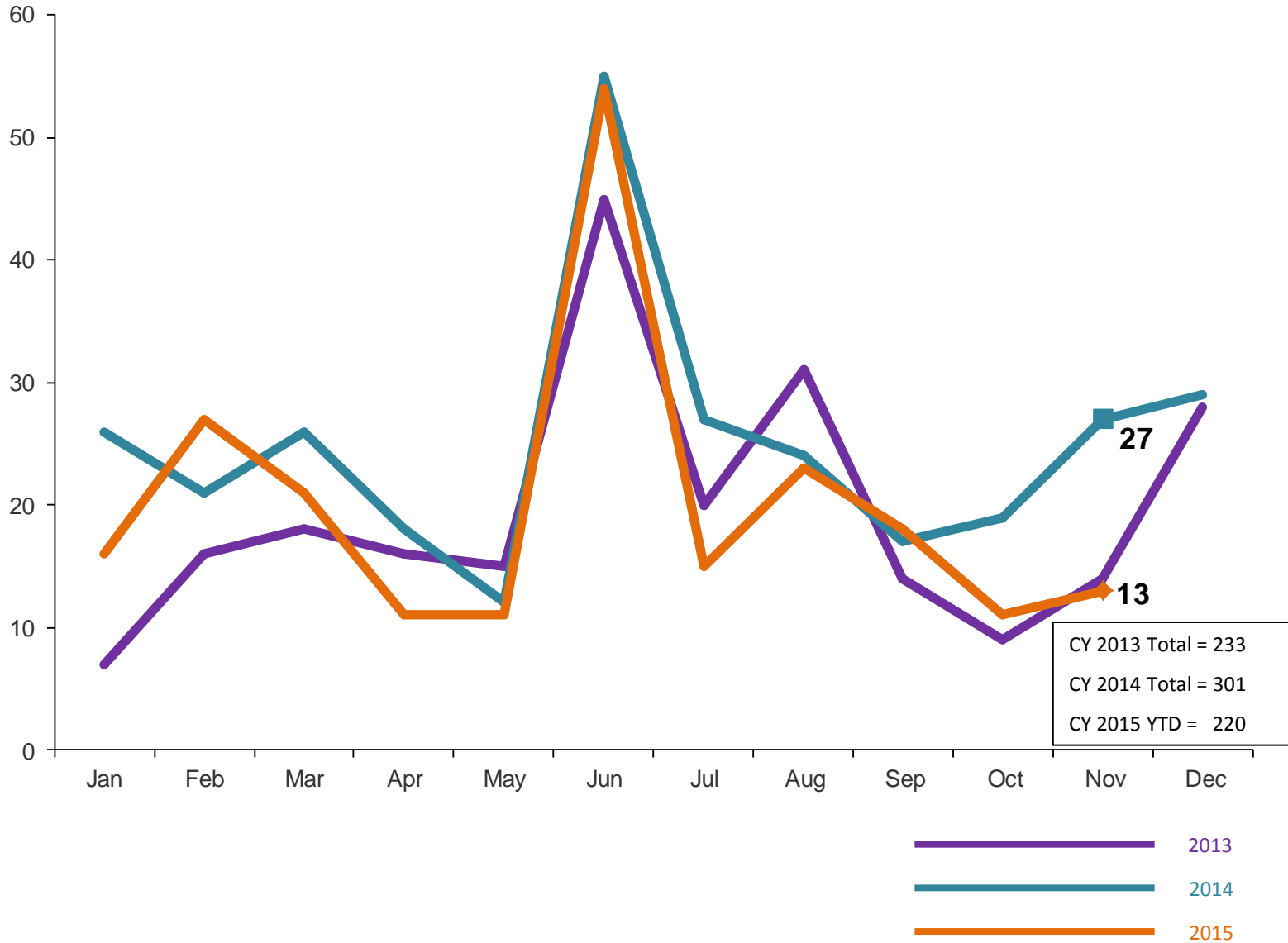
November 2014 – November 2015 (Point-in-Time)



	11/26/14	12/31/14	1/30/15	2/28/15	3/31/15	4/30/15	5/31/15	6/30/15	7/31/15	8/31/15	9/30/15	10/31/15	11/30/15
Number in Placement	198	184	176	145	164	168	173	141	149	145	144	148	157

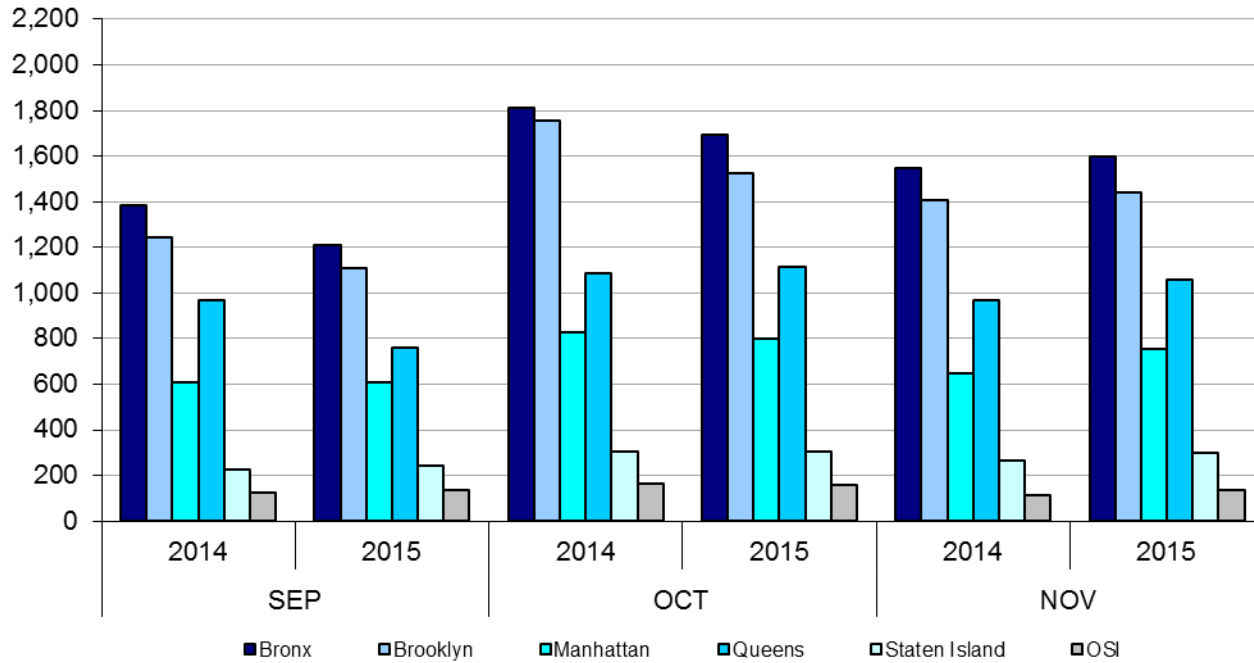
### Releases from NSP to Aftercare

January 2013 – November 2015 (Monthly Total)



# Appendix

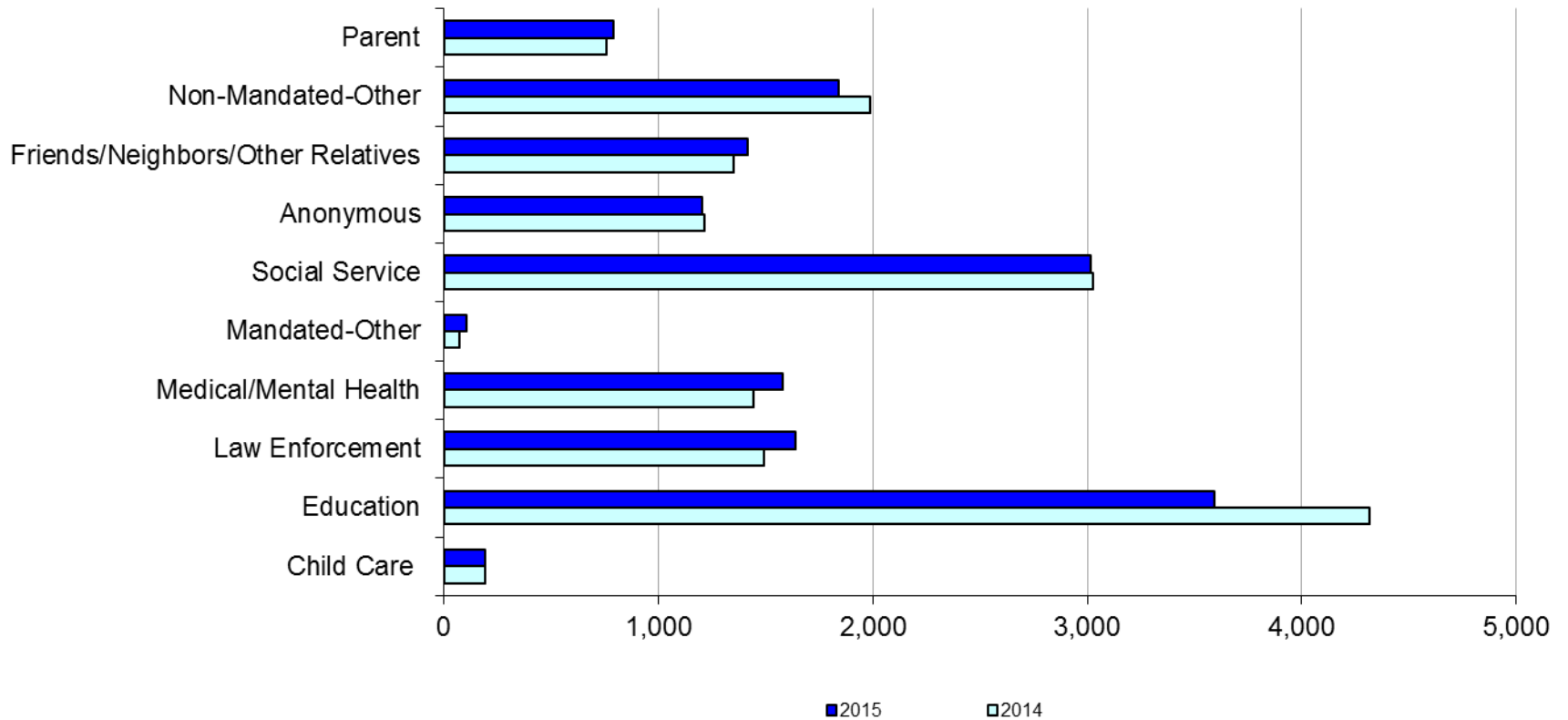
Figure 1: SCR Intakes by Borough, SEP 14 – NOV 14 and SEP 15 – NOV 15



**Table 1 - SCR Intake Changes by Borough, SEP 14 – NOV 14 and SEP 15 – NOV 15**

Month	Year	Bronx	Brooklyn	Manhattan	Queens	Staten Island	OSI	Other	Total
SEP	2014	1,386	1,242	610	967	224	123	131	4,683
	2015	1,210	1,107	610	762	245	138	149	4,221
	% Change	-12.7%	-10.9%	0.0%	-21.2%	9.4%	12.2%	13.7%	-9.9%
OCT	2014	1,814	1,753	826	1,088	305	166	165	6,117
	2015	1,694	1,526	797	1,117	304	158	129	5,725
	% Change	-6.6%	-12.9%	-3.5%	2.7%	-0.3%	-4.8%	-21.8%	-6.4%
NOV	2014	1,548	1,409	647	971	266	114	90	5,045
	2015	1,596	1,440	756	1,057	297	137	147	5,430
	% Change	3.1%	2.2%	16.8%	8.9%	11.7%	20.2%	63.3%	7.6%
Total	2014	4,748	4,404	2,083	3,026	795	403	386	15,845
	2015	4,500	4,073	2,163	2,936	846	433	425	15,376
	% Change	-5.2%	-7.5%	3.8%	-3.0%	6.4%	7.4%	10.1%	-3.0%

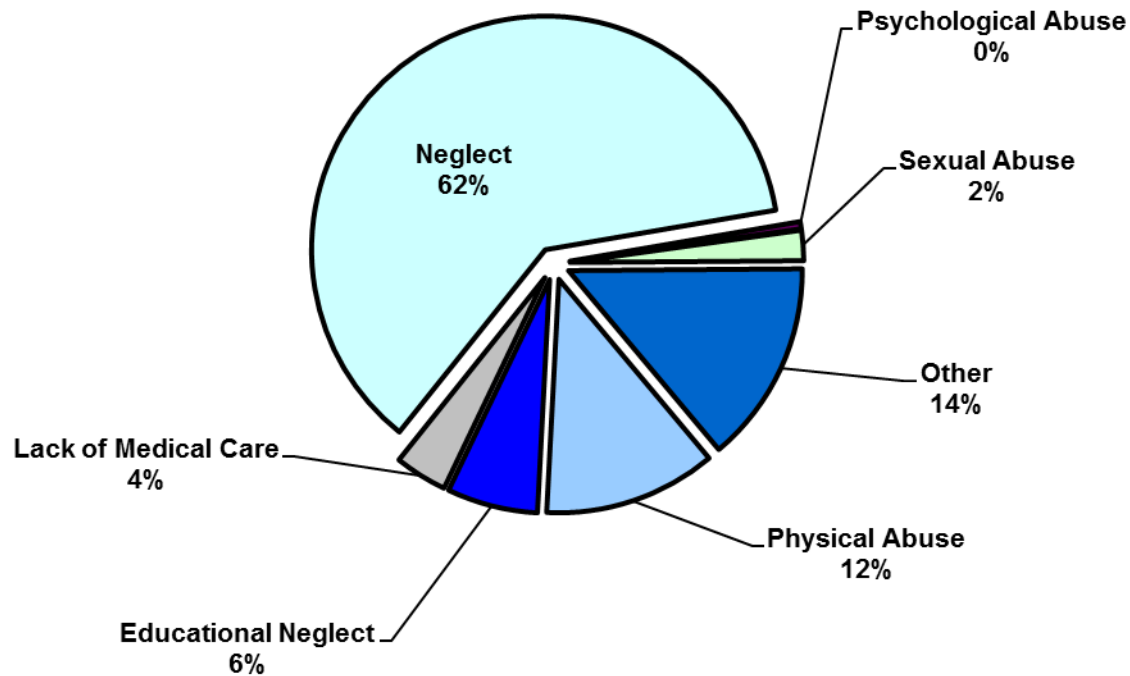
**Figure 2: Citywide SCR Intakes by Reporter Group, SEP 14 – NOV 14 and SEP 15 – NOV 15**



**Table 2 - SCR Intakes by Reporter Group, SEP 14 – NOV 14 and SEP 15 – NOV 15**

Year	Child Care/ Substitute Care Personnel	Educational Personnel	Law Enforcement	Medical/ Mental Health Personnel	Mandated- Other	Social Service Personnel	Anonymous	Friends/ Neighbors/ Other Relatives	Non- Mandated- Other	Parent	Foster Parent	Total
<b>Bronx</b>												
2014	54	1,335	337	432	19	925	369	430	638	204	2	4,745
2015	49	1,040	465	464	35	909	363	412	573	191	0	4,501
% Change	-9.3%	-22.1%	38.0%	7.4%	84.2%	-1.7%	-1.6%	-4.2%	-10.2%	-6.4%	-100.0%	-5.1%
<b>Brooklyn</b>												
2014	49	1,277	454	353	20	775	351	389	544	189	1	4,402
2015	47	1,022	476	379	27	707	357	389	451	217	1	4,073
% Change	-4.1%	-20.0%	4.8%	7.4%	35.0%	-8.8%	1.7%	0.0%	-17.1%	14.8%	0.0%	-7.5%
<b>Manhattan</b>												
2014	34	431	268	217	16	424	144	175	284	88	0	2,081
2015	33	417	278	258	15	448	157	183	269	105	0	2,163
% Change	-2.9%	-3.2%	3.7%	18.9%	-6.3%	5.7%	9.0%	4.6%	-5.3%	19.3%	--	3.9%
<b>Queens</b>												
2014	27	929	271	269	11	595	232	242	316	135	0	3,027
2015	22	832	242	307	15	626	190	271	302	130	0	2,937
% Change	-18.5%	-10.4%	-10.7%	14.1%	36.4%	5.2%	-18.1%	12.0%	-4.4%	-3.7%	--	-3.0%
<b>Staten Island</b>												
2014	5	269	64	82	3	107	74	72	74	44	1	795
2015	11	226	92	88	4	106	85	110	87	37	0	846
% Change	120.0%	-16.0%	43.8%	7.3%	33.3%	-0.9%	14.9%	52.8%	17.6%	-15.9%	-100.0%	6.4%
<b>OSI</b>												
2014	20	44	22	40	4	75	27	21	93	53	4	403
2015	27	28	16	37	5	70	37	27	112	73	1	433
% Change	35.0%	-36.4%	-27.3%	-7.5%	25.0%	-6.7%	37.0%	28.6%	20.4%	37.7%	-75.0%	7.4%
<b>Other</b>												
2014	6	32	78	53	0	124	20	24	40	44	0	421
2015	3	27	68	48	3	148	15	27	45	39	0	423
% Change	-50.0%	-15.6%	-12.8%	-9.4%	--	19.4%	-25.0%	12.5%	12.5%	-11.4%	--	0.5%
<b>Citywide</b>												
2014	195	4,317	1,494	1,446	73	3,025	1,217	1,353	1,989	757	8	15,874
2015	192	3,592	1,637	1,581	104	3,014	1,204	1,419	1,839	792	2	15,376
% Change	-1.5%	-16.8%	9.6%	9.3%	42.5%	-0.4%	-1.1%	4.9%	-7.5%	4.6%	-75.0%	-3.1%

**Figure 3: SCR Allegations, SEP 15 – NOV 15**



Total Allegations = 39,268

Allegations are grouped as follows: Physical Abuse - burn, fatality, fracture, choking, twisting, shaking, excessive corporal punishment, internal injuries, lacerations, bruises, welts, poisoning, noxious substances; Educational Neglect – educational neglect; Lack of Medical Care – lack of medical care; Neglect - inadequate guardianship, inadequate food, clothing, shelter, lack of supervision, malnutrition, failure to thrive, swelling, dislocations, sprains; Psychological Abuse - isolation, emotional neglect; Sexual Abuse – sexual abuse; and Other -parental drug use, child drug use, abandonment, inappropriate custodial conduct.

**Table 3 - SCR Allegations, SEP 14 - NOV 14 and SEP 15 – NOV 15**

Year	Physical Abuse	Educational Neglect	Lack of Medical Care	Neglect	Psychological Abuse	Sexual Abuse	Other	Total
<b>Bronx</b>								
2014	1,396	1,144	491	7,684	47	271	1,672	12,705
2015	1,348	809	440	7,578	50	224	1,624	12,073
% Change	-3.4%	-29.3%	-10.4%	-1.4%	6.4%	-17.3%	-2.9%	-5.0%
<b>Brooklyn</b>								
2014	1,409	912	453	6,942	48	228	1,376	11,368
2015	1,320	788	342	6,441	45	256	1,431	10,623
% Change	-6.3%	-13.6%	-24.5%	-7.2%	-6.3%	12.3%	4.0%	-6.6%
<b>Manhattan</b>								
2014	448	322	155	2732	30	74	606	4,367
2015	480	298	216	2893	29	94	625	4,635
% Change	7.1%	-7.5%	39.4%	5.9%	-3.3%	27.0%	3.1%	6.1%
<b>Queens</b>								
2014	1,036	380	244	4,380	55	130	964	7,189
2015	987	358	238	4,078	52	123	1,024	6,860
% Change	-4.7%	-5.8%	-2.5%	-6.9%	-5.5%	-5.4%	6.2%	-4.6%
<b>Staten Island</b>								
2014	243	155	67	1,259	16	38	330	2,108
2015	230	134	89	1,529	9	36	408	2,435
% Change	-5.3%	-13.5%	32.8%	21.4%	-43.8%	-5.3%	23.6%	15.5%
<b>OSI</b>								
2014	265	39	56	1,072	10	61	176	1,679
2015	218	46	60	1,062	6	57	161	1,610
% Change	-17.7%	17.9%	7.1%	-0.9%	-40.0%	-6.6%	-8.5%	-4.1%
<b>Other</b>								
2014	129	48	40	682	5	31	238	1,173
2015	107	34	38	588	4	32	229	1,032
% Change	-17.1%	-29.2%	-5.0%	-13.8%	-20.0%	3.2%	-3.8%	-12.0%
<b>Citywide</b>								
2014	4,926	3,000	1,506	24,751	211	833	5,362	40,589
2015	4,690	2,467	1,423	24,169	195	822	5,502	39,268
% Change	-4.8%	-17.8%	-5.5%	-2.4%	-7.6%	-1.3%	2.6%	-3.3%



**TABLE 4 - Purchased Preventive Cases  
Opened and Closed  
January 2012 to November 2015**

Month	Opened Cases	Closed Cases
<b>2012</b>		
Jan-12	870	629
Feb-12	889	835
Mar-12	944	991
Apr-12	997	870
May-12	1,117	979
Jun-12	965	869
Jul-12	853	979
Aug-12	917	1,007
Sep-12	727	900
Oct-12	875	915
Nov-12	738	702
Dec-12	938	871
<b>2013</b>		
Jan-13	960	884
Feb-13	873	916
Mar-13	962	1,171
Apr-13	940	988
May-13	864	1,337
Jun-13	863	780
Jul-13	868	1,004
Aug-13	802	1,084
Sep-13	844	724
Oct-13	933	765
Nov-13	901	685
Dec-13	1,106	552
<b>2014</b>		
Jan-14	983	640
Feb-14	987	679
Mar-14	1,146	874
Apr-14	1,074	896
May-14	1,042	888
Jun-14	976	762
Jul-14	1,050	1,077
Aug-14	944	943
Sep-14	987	705
Oct-14	1,050	819
Nov-14	818	638
Dec-14	1,268	721
<b>2015</b>		
Jan-15	826	716
Feb-15	1,001	590
Mar-15	1,270	686
Apr-15	1,103	743
May-15	1,048	842
Jun-15	1,196	797
Jul-15	967	1,070
Aug-15	965	891
Sep-15	827	847
Oct-15	879	772
Nov-15	859	652

**Table 5 - Referrals to Purchased Preventive Services by Source  
January 2012 to November 2015**

Month	Total Referrals	Division of Child Protection	Foster Care Agencies	PPRS Transfer	School	Self	Other Sources*
<b>2012</b>							
Jan-12	1,431	66.5%	0.7%	8.5%	3.6%	3.8%	17.0%
Feb-12	1,043	78.2%	1.1%	9.0%	1.9%	6.7%	3.1%
Mar-12	1,525	73.6%	0.9%	6.0%	1.8%	3.9%	13.8%
Apr-12	1,370	72.8%	1.0%	9.4%	1.2%	4.2%	11.4%
May-12	1,463	70.9%	1.0%	7.6%	1.1%	4.4%	15.0%
Jun-12	1,279	73.8%	0.5%	5.9%	1.0%	4.7%	14.2%
Jul-12	1,308	77.4%	1.2%	7.0%	0.3%	3.7%	10.5%
Aug-12	1,391	74.0%	0.9%	11.7%	0.3%	2.9%	10.2%
Sep-12	1,110	70.5%	1.9%	9.6%	1.2%	5.0%	11.9%
Oct-12	1,159	61.1%	1.4%	12.6%	2.7%	4.9%	17.3%
Nov-12	1,106	67.0%	1.0%	9.9%	2.2%	4.7%	15.3%
Dec-12	1,206	68.7%	0.8%	5.8%	2.7%	5.6%	16.4%
CY 2012	15,391	71.3%	1.0%	8.5%	1.6%	4.5%	13.1%
<b>2013</b>							
Jan-13	1,474	74.1%	1.2%	7.3%	1.2%	3.7%	12.5%
Feb-13	1,308	75.8%	1.1%	8.0%	1.6%	2.9%	10.6%
Mar-13	1,270	73.5%	1.2%	6.7%	2.4%	3.9%	12.3%
Apr-13	1,421	77.9%	0.8%	7.4%	0.9%	3.0%	10.1%
May-13	1,320	68.4%	0.5%	10.2%	1.5%	3.8%	15.5%
Jun-13	953	69.2%	1.2%	9.4%	2.6%	5.0%	12.6%
Jul-13	1,014	66.3%	1.9%	14.4%	1.6%	3.9%	11.9%
Aug-13	1,212	70.5%	0.7%	11.8%	0.7%	4.7%	11.6%
Sep-13	1,262	64.0%	2.1%	11.3%	1.7%	6.7%	14.2%
Oct-13	1,319	61.0%	1.1%	9.0%	2.9%	7.5%	18.5%
Nov-13	1,249	55.9%	1.6%	10.5%	4.6%	9.2%	18.3%
Dec-13	1,464	62.2%	1.2%	8.2%	2.3%	9.2%	17.0%
CY 2013	15,266	68.3%	1.2%	9.4%	2.0%	5.3%	13.8%
<b>2014</b>							
Jan-14	1,537	70.0%	1.2%	6.6%	2.3%	5.8%	14.2%
Feb-14	1,334	69.7%	0.8%	8.4%	1.7%	5.5%	13.9%
Mar-14	1,612	70.0%	1.4%	8.6%	1.6%	5.3%	13.1%
Apr-14	1,525	70.2%	0.9%	7.6%	2.1%	3.7%	15.4%
May-14	1,580	74.4%	0.7%	8.3%	1.4%	5.2%	10.0%
Jun-14	1,550	78.6%	1.2%	6.3%	1.2%	3.2%	9.4%
Jul-14	1,659	79.6%	1.5%	6.7%	0.4%	4.2%	7.6%
Aug-14	1,395	72.2%	1.6%	10.8%	0.3%	4.9%	10.3%
Sep-14	1,597	49.4%	1.5%	7.6%	0.3%	4.5%	36.8%
Oct-14	1,634	68.2%	1.9%	10.0%	1.2%	4.6%	14.1%
Nov-14	1,311	66.4%	0.9%	14.3%	2.4%	3.9%	12.1%
Dec-14	1,785	71.1%	1.4%	8.8%	2.9%	4.8%	11.0%
CY 2014	18,519	70.1%	1.3%	8.6%	1.5%	4.6%	14.0%
<b>2015</b>							
Jan-15	1,430	74.4%	1.6%	8.7%	1.8%	3.8%	9.7%
Feb-15	1,538	76.5%	0.8%	8.1%	1.8%	4.7%	8.2%
Mar-15	1,798	74.6%	0.9%	7.3%	1.6%	4.8%	10.8%
Apr-15	1,719	78.2%	1.3%	7.2%	0.6%	3.5%	9.1%
May-15	1,561	77.2%	1.0%	5.1%	1.5%	4.5%	10.8%
Jun-15	1,716	77.4%	1.1%	7.7%	1.2%	3.5%	9.1%
Jul-15	1,511	79.6%	0.9%	7.2%	0.3%	3.8%	8.2%
Aug-15	1,418	79.3%	2.2%	7.8%	0.2%	3.1%	7.5%
Sep-15	1,209	72.1%	2.8%	10.4%	0.5%	5.5%	8.6%
Oct-15	1,338	70.4%	1.9%	8.3%	2.1%	5.8%	11.6%
Nov-15	1,220	68.2%	1.8%	9.6%	1.4%	6.2%	12.8%

\*Other Community Sources includes the Department of Homeless Services, Family Court, FAP, Hospitals and Medical facilities, the NYC Housing Authority, PINS/DAS, Probation, and Sponsor Agencies.