

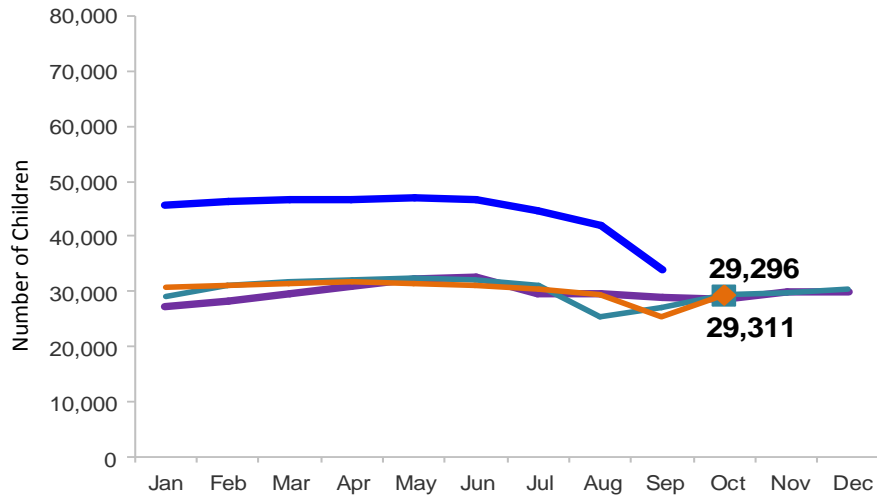


Flash

November 2015

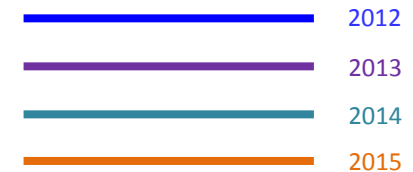
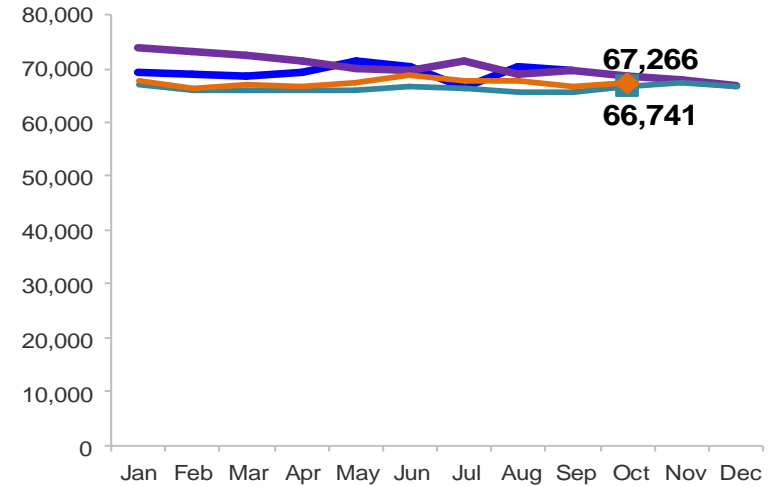
Children Enrolled in Contracted EarlyLearn Programs

January 2012 – October 2015 (End of Month)



Children Using Vouchers for Child Care

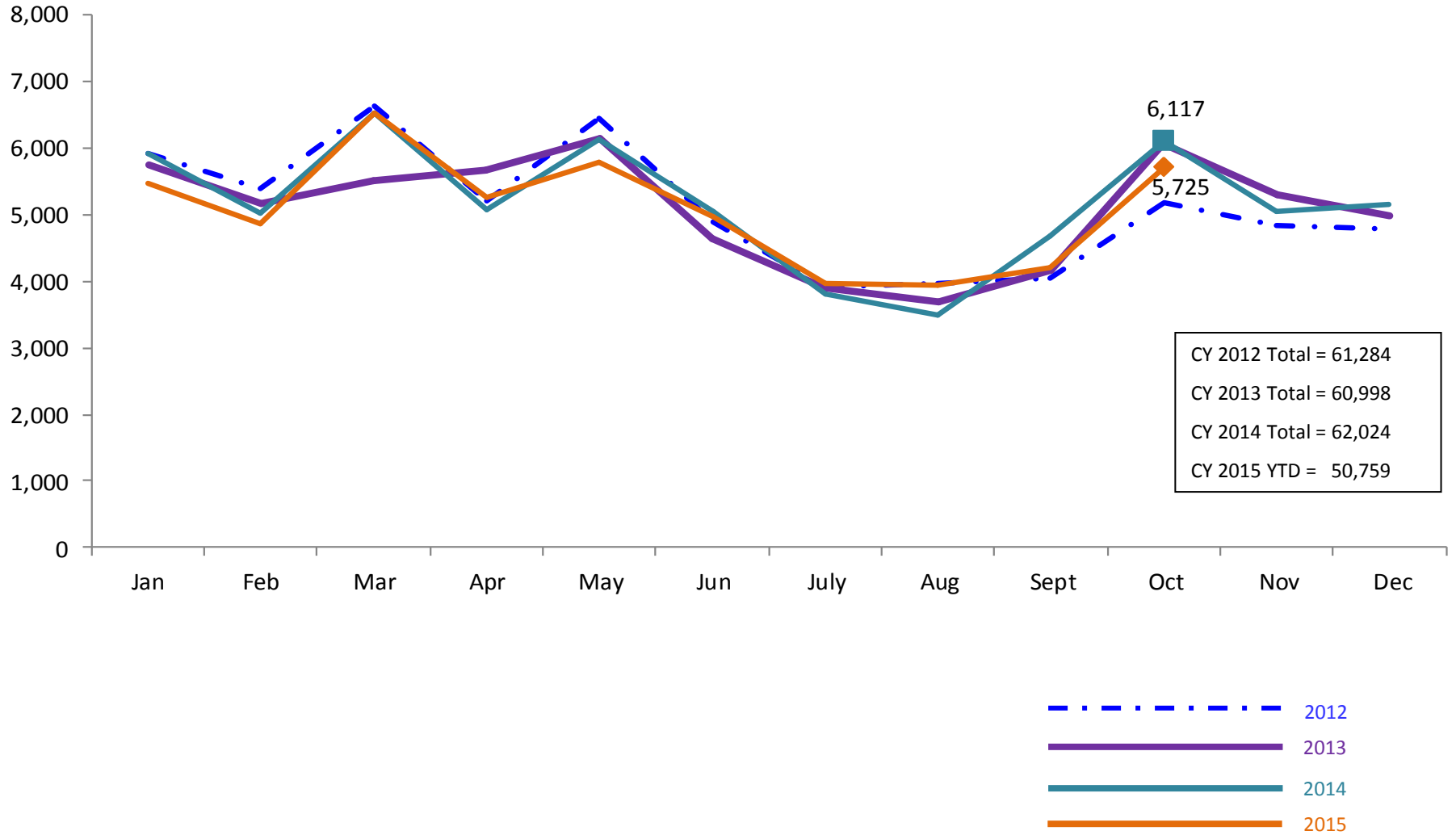
January 2012 – October 2015 (End of Month)



Note: Beginning October 1, 2012 ACS converted its early care and education system to a new model, EarlyLearn NYC. Enrollment data for the transitional months of October – December 2012 are not available because contractors were in the midst of implementing the data collection systems.

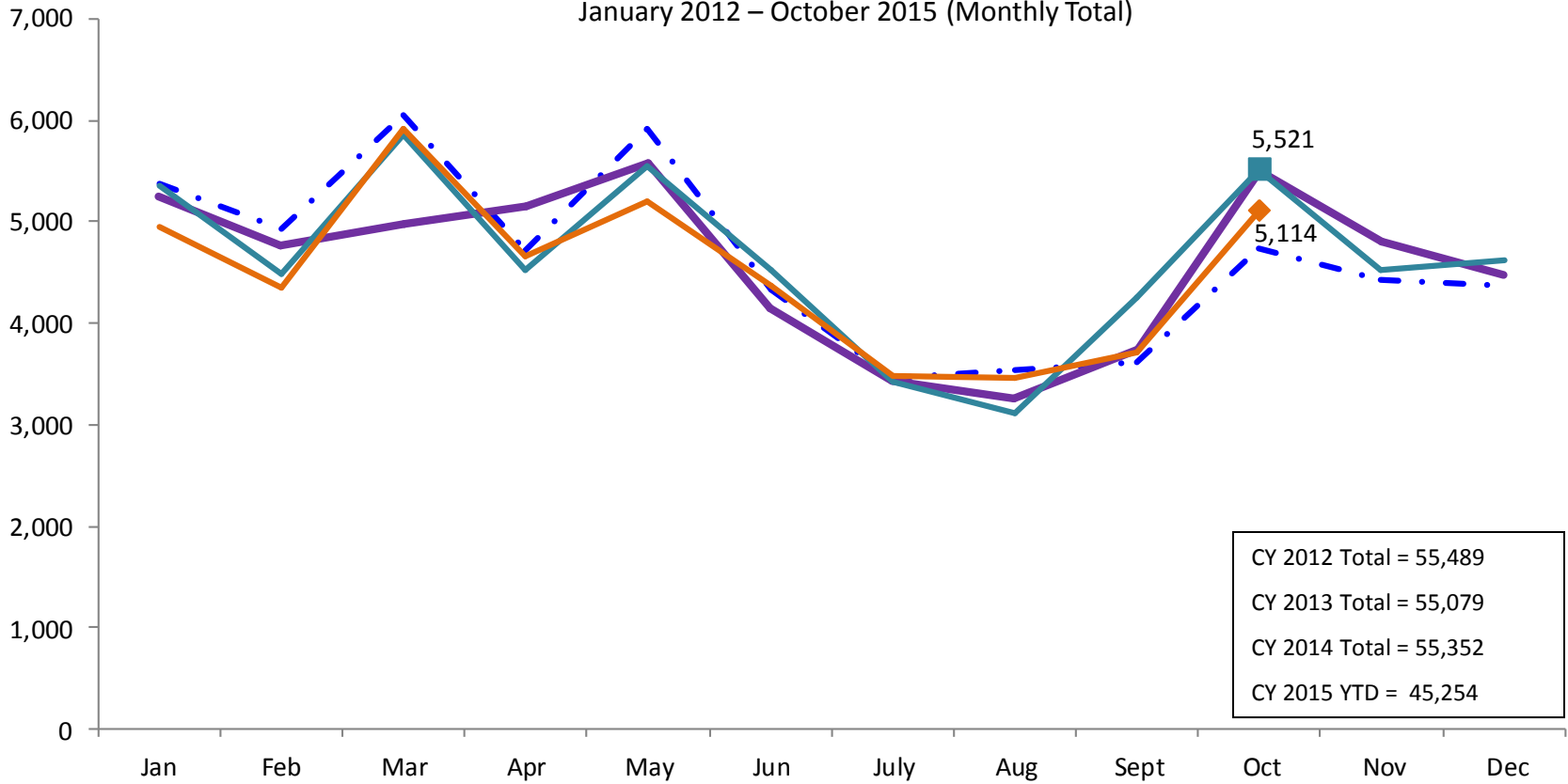
SCR Intakes

January 2012 – October 2015 (Monthly Total)

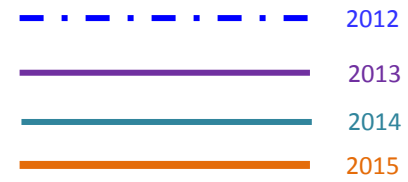


SCR Consolidated Investigations

January 2012 – October 2015 (Monthly Total)

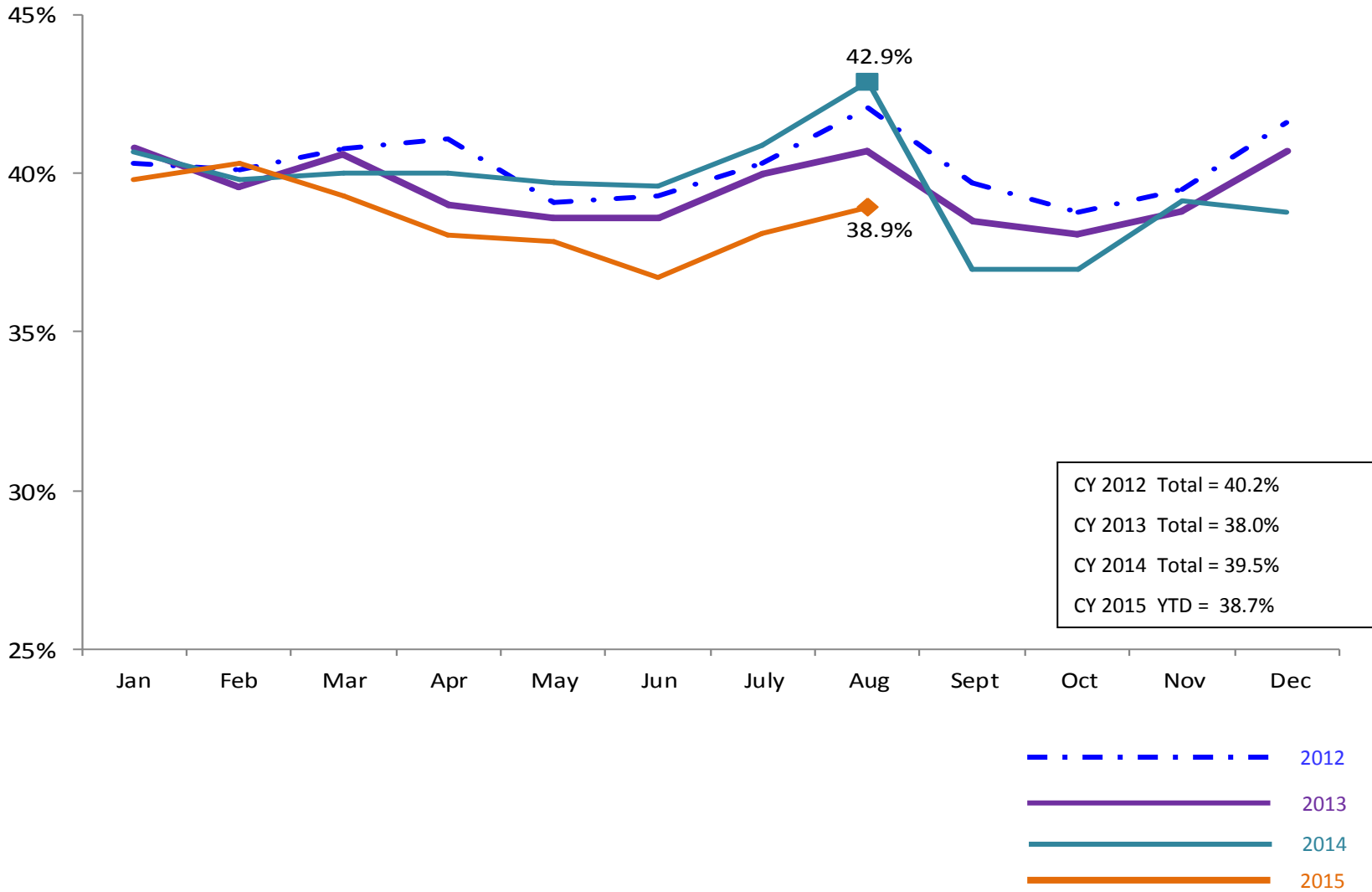


CY 2012 Total = 55,489
 CY 2013 Total = 55,079
 CY 2014 Total = 55,352
 CY 2015 YTD = 45,254



SCR Investigation Indication Rate

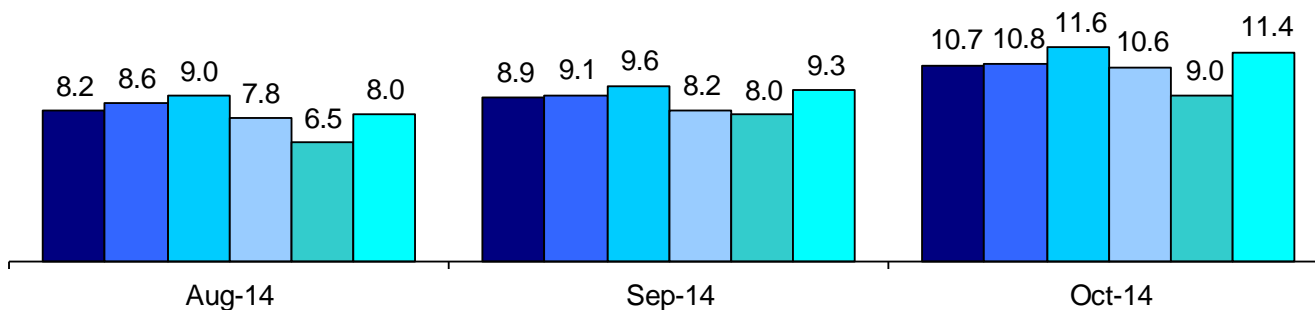
January 2012 – August 2015



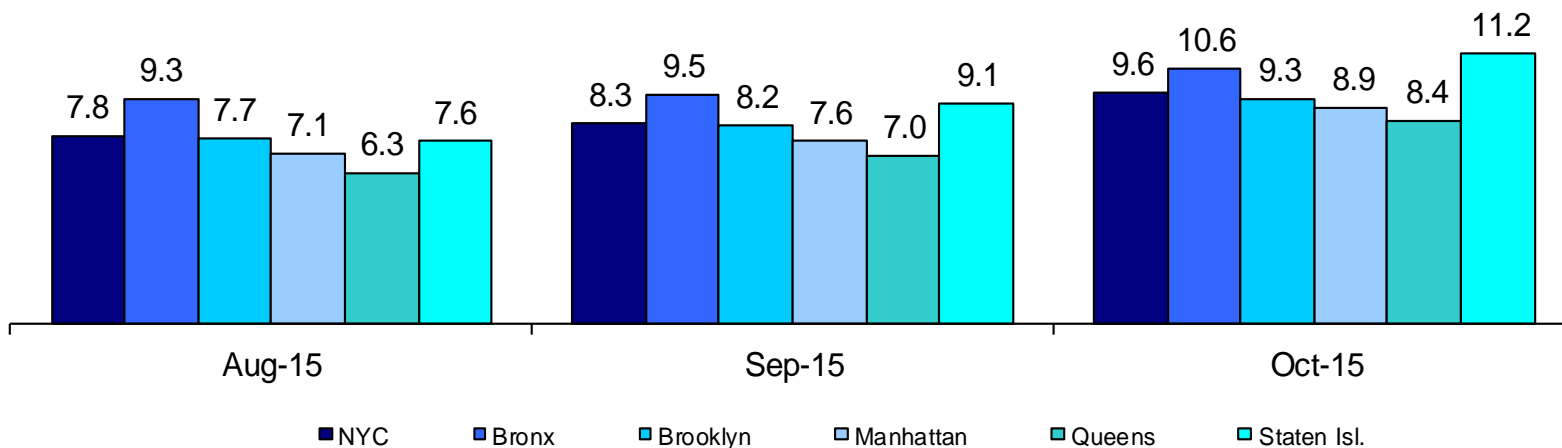
Average P/D Combined Caseload*

August 2014 – October 2014 & August 2015 – October 2015

2014



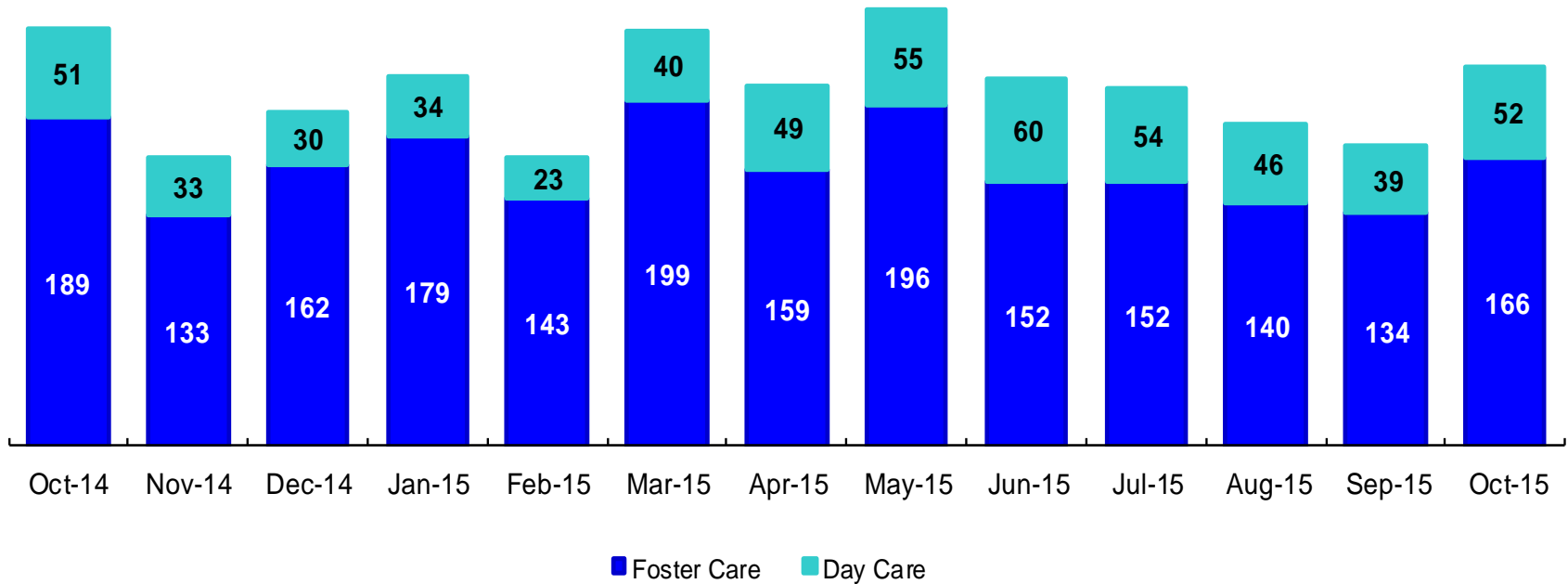
2015



* Caseloads are of protective/diagnostic caseworkers only and exclude the caseloads carried by Level I and Level II Supervisors.

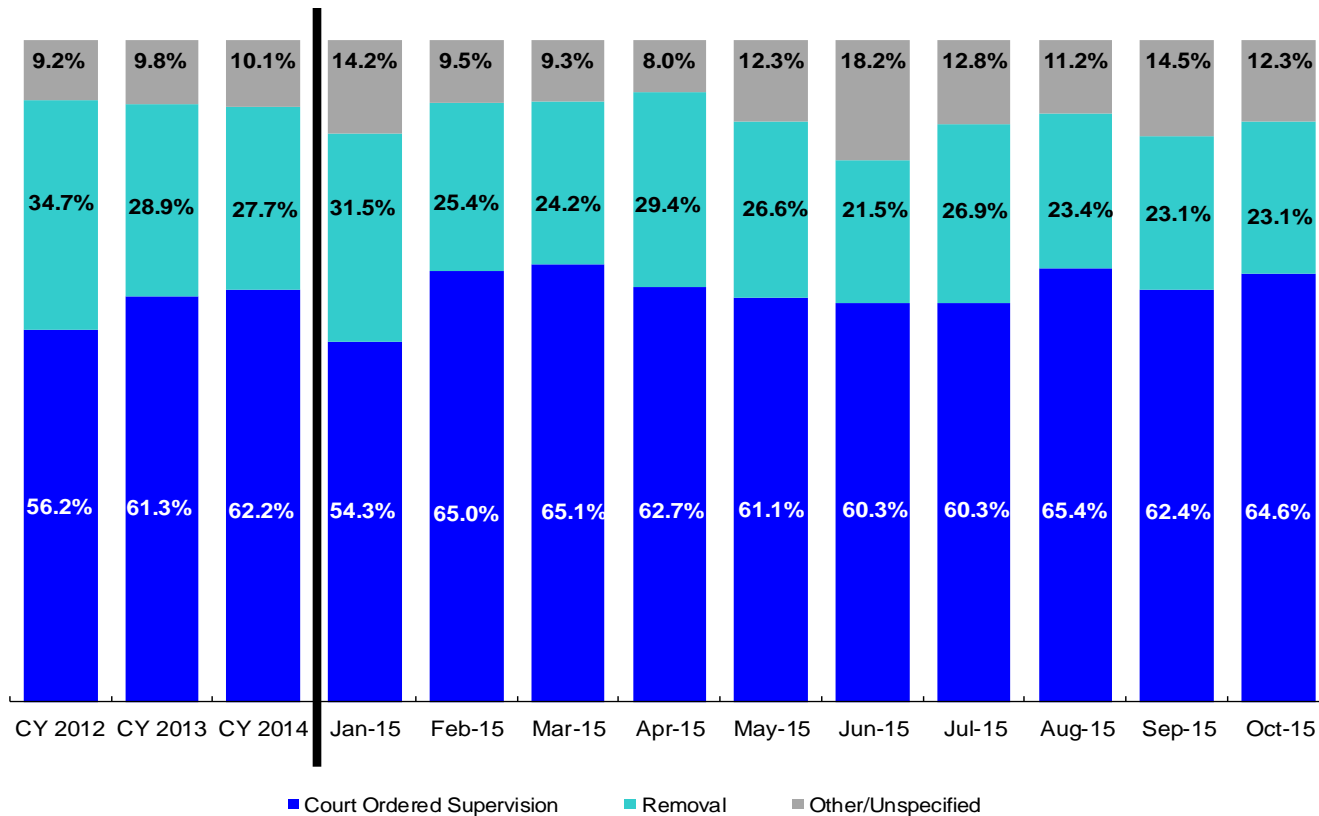
OSI Investigations by Program

October 2014 – October 2015



	Oct 2014	Nov 2014	Dec 2014	Jan 2015	Feb 2015	Mar 2015	Apr 2015	May 2015	Jun 2015	Jul 2015	Aug 2015	Sep 2015	Oct 2015
Number of Investigations	240	166	192	213	166	239	208	251	212	206	186	173	218

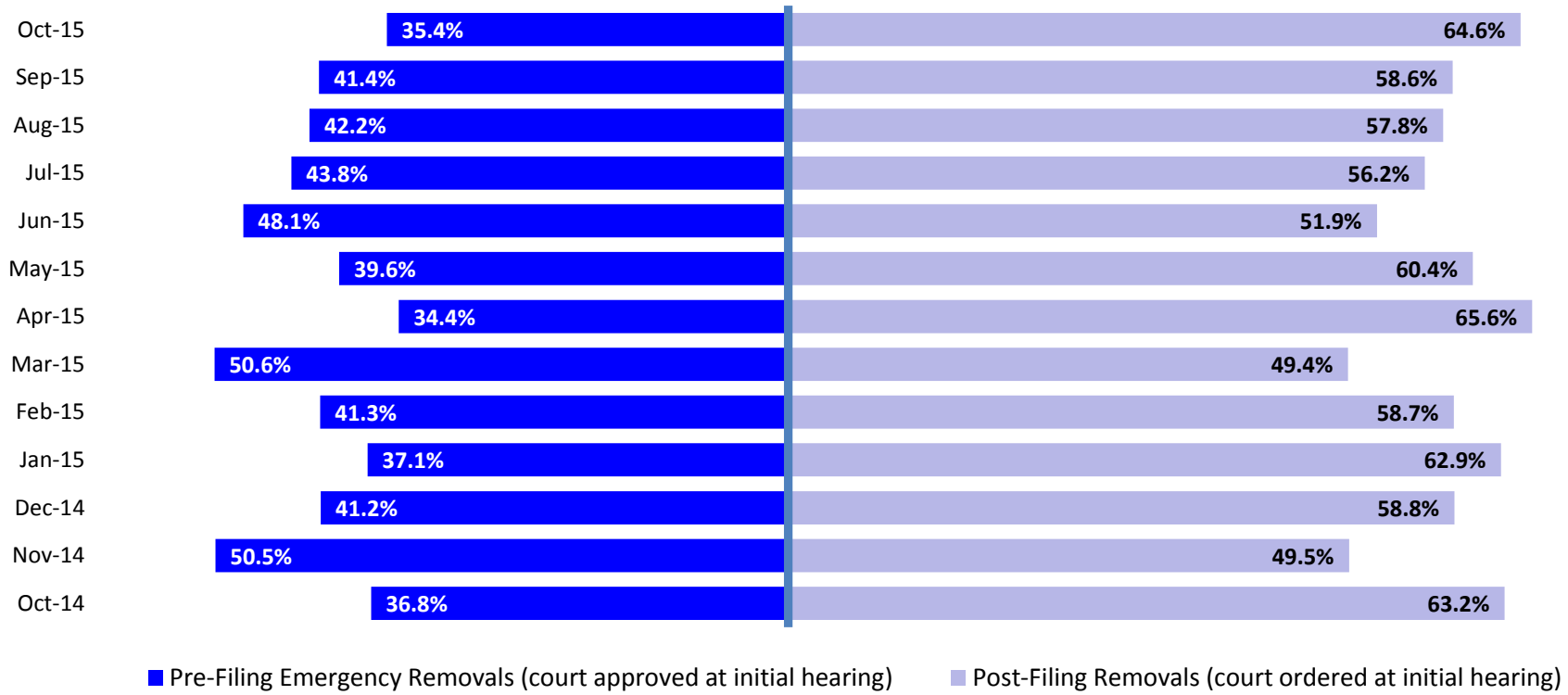
Article 10 Total Filings & Filing Outcomes, CY 2012 – October 2015



	CY 2012	CY 2013	CY 2014	Jan 2015	Feb 2015	Mar 2015	Apr 2015	May 2015	Jun 2015	July 2015	Aug 2015	Sep 2015	Oct 2015
Article10 Filings	8,913	9,318	9,900	812	924	1,012	892	940	959	875	769	752	772

Note: The category "Other/Unspecified" includes released with no supervision, no order issued and no outcome specified. Outcomes of cases heard the next day are not captured in this report

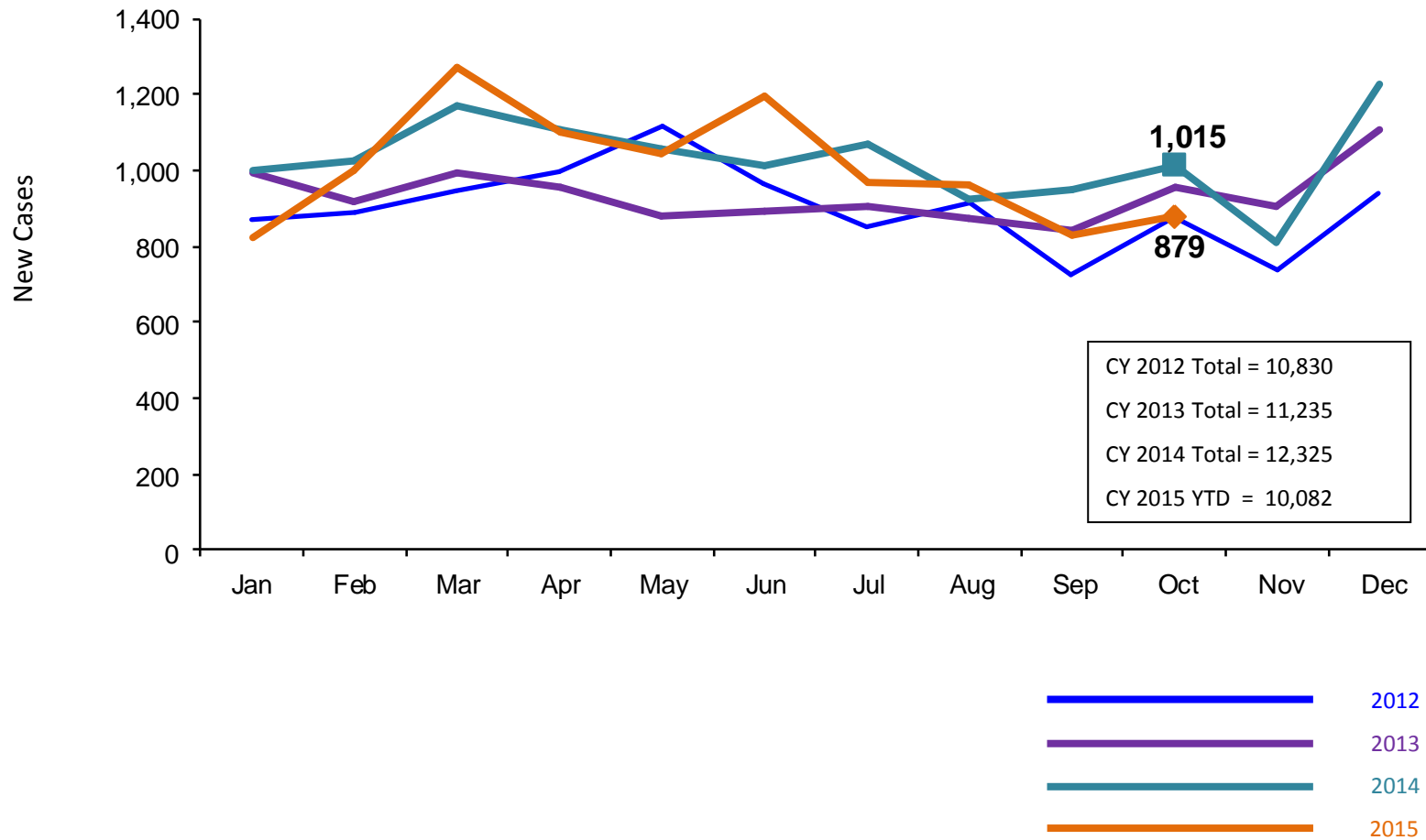
Article 10 Filing Removals, October 2014 – October 2015



	Oct 2014	Nov 2014	Dec 2014	Jan 2015	Feb 2015	Mar 2015	Apr 2015	May 2015	Jun 2015	July 2015	Aug 2015	Sep 2015	Oct 2015
Number of Removals	231	194	262	256	235	245	262	250	206	235	180	174	178

New Preventive Cases*

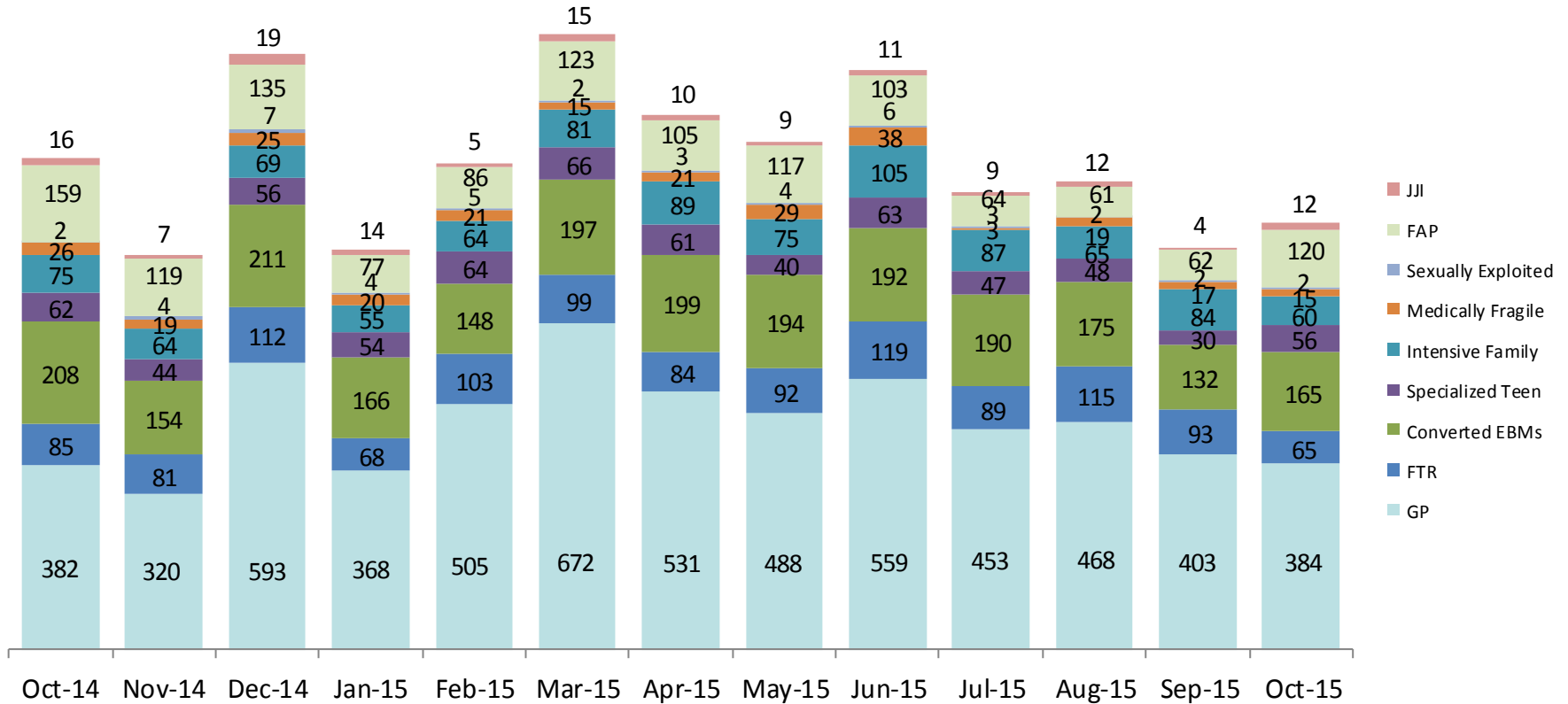
January 2012 – October 2015



*Notes: 1) New preventive cases do not include cases transferred from one preventive program to another. 2) See Pages 33 and 34 of the Appendix for supporting data.

New Preventive Cases* by Program Type

October 2014 – October 2015

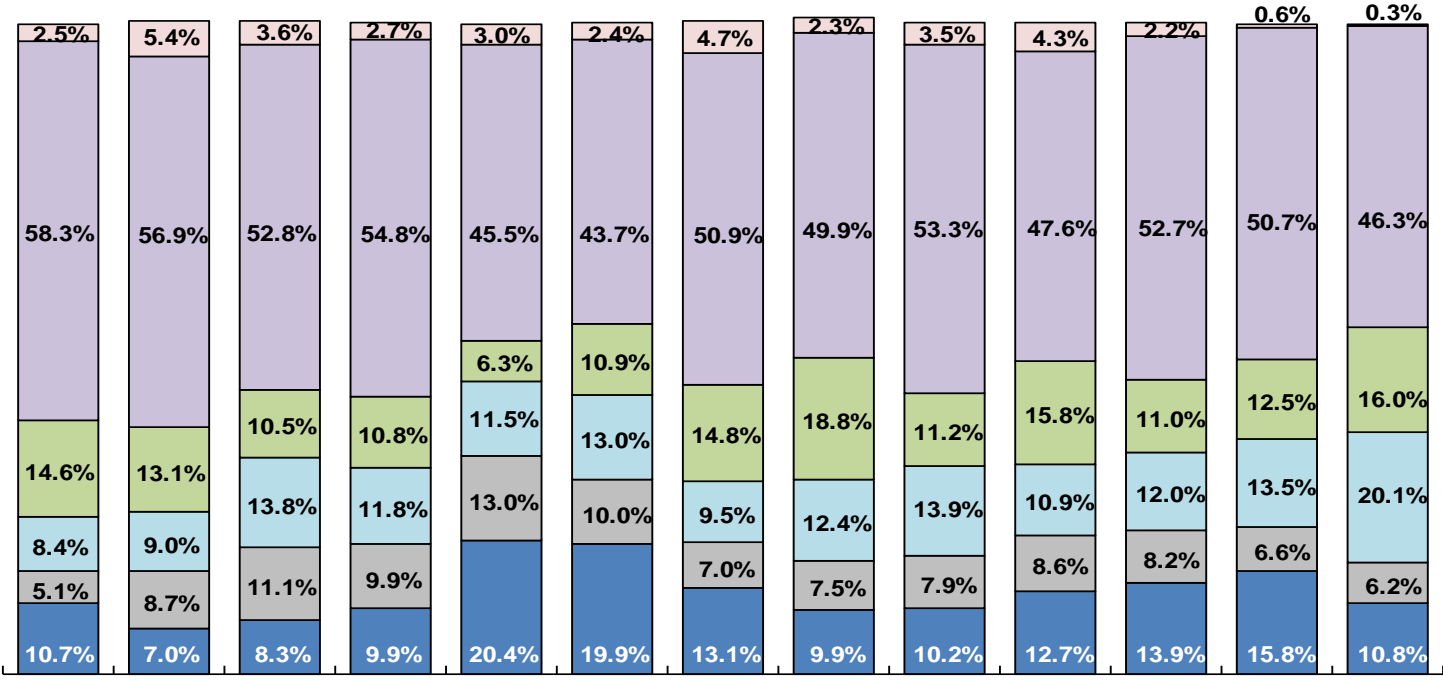


	Oct 2014	Nov 2014	Dec 2014	Jan 2015	Feb 2015	Mar 2015	Apr 2015	May 2015	Jun 2015	Jul 2015	Aug 2015	Sep 2015	Oct 2015
Number of New Preventive Cases	1,015	812	1,227	826	1,001	1,270	1,103	1,048	1,196	967	965	827	879

Note: New preventive cases do not include cases transferred from one preventive program to another.

Average Pre-Placement Residential Monthly Population

October 2014 – October 2015



Oct-14 Nov-14 Dec-14 Jan-15 Feb-15 Mar-15 Apr-15 May-15 Jun-15 Jul-15 Aug-15 Sep-15 Oct-15

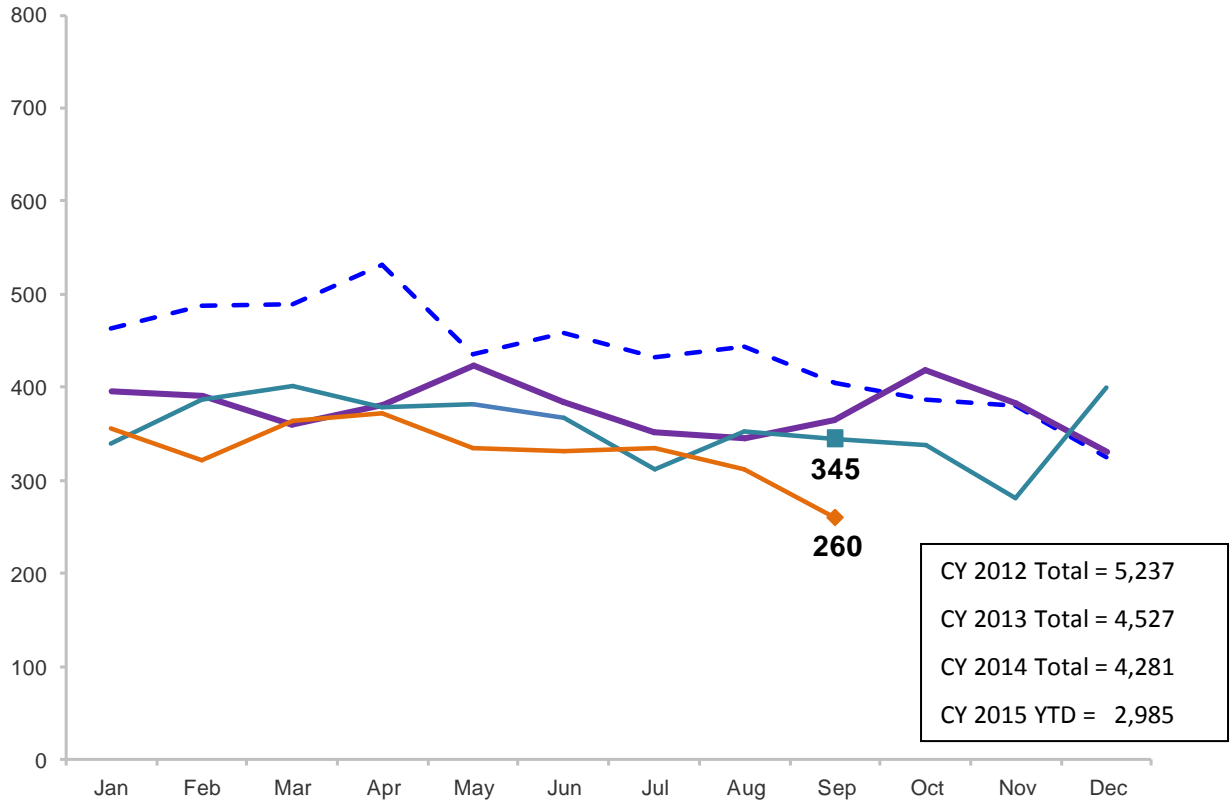
■ Newborn - 3 years old ■ 4-6 years old ■ 7-10 years old ■ 11-13 years old ■ 14-18 years old ■ >=19 yrs

	Oct 2014	Nov 2014	Dec 2014	Jan 2015	Feb 2015	Mar 2015	Apr 2015	May 2015	Jun 2015	July 2015	Aug 2015	Sep 2015	Oct 2015
Average Number of Children	45	48	44	51	39	50	52	60	50	42	40	36	45

*Beginning in December 2014 the pre-placement residential population includes children at the Children’s Center and at the MercyFirst Reception Center.

Total Monthly Placements

January 2012 – September 2015

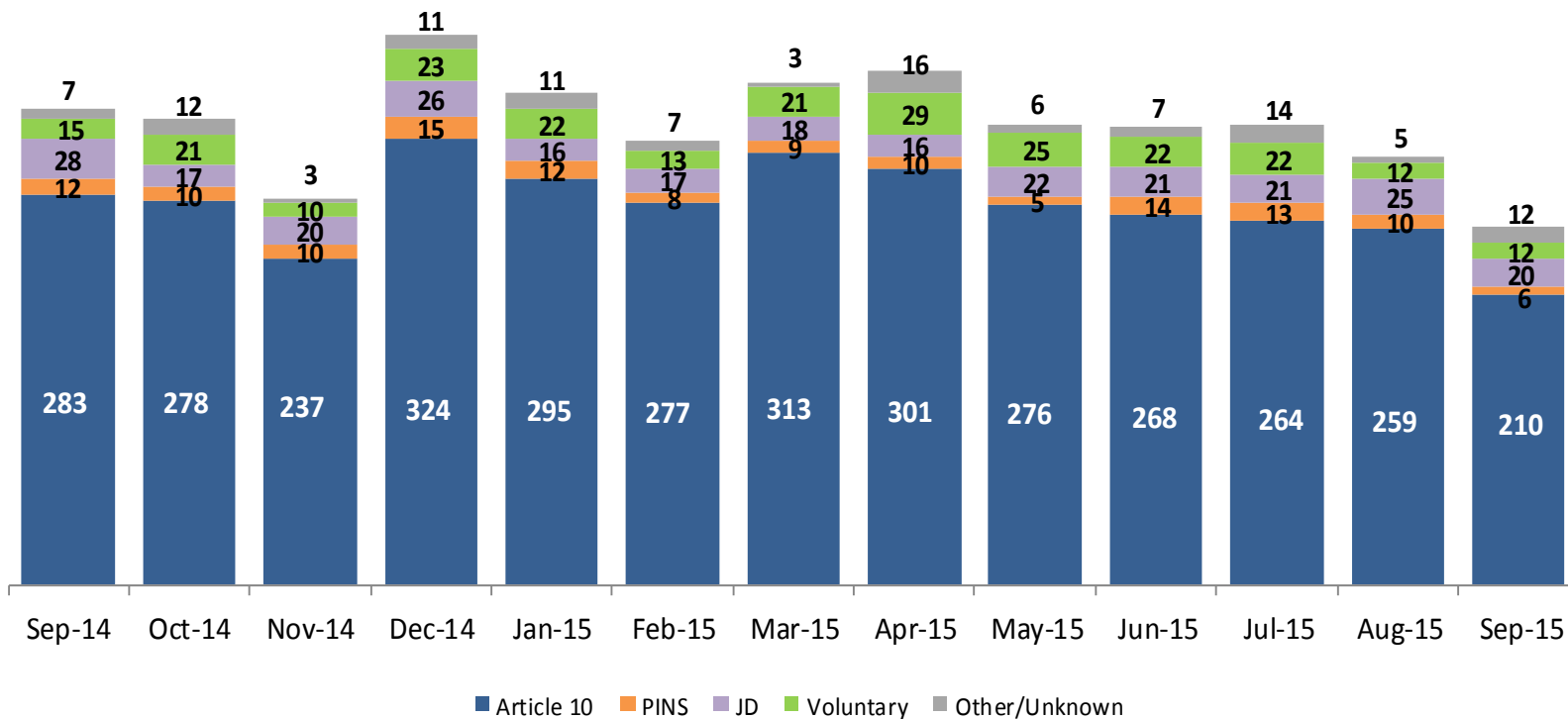


CY 2012 Total = 5,237
CY 2013 Total = 4,527
CY 2014 Total = 4,281
CY 2015 YTD = 2,985

- 2012
- 2013
- 2014
- 2015

Reason for Initial Placements into Foster Care

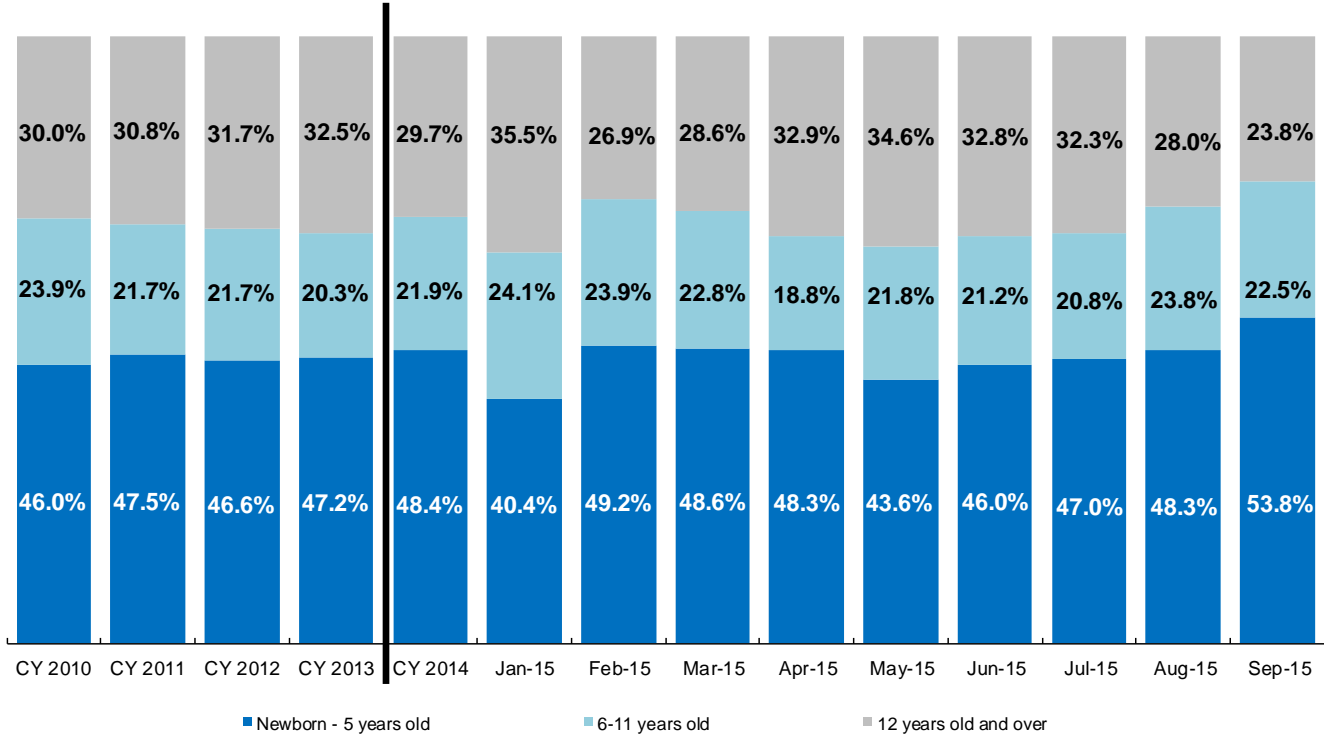
September 2014 – September 2015



	Sep 2014	Oct 2014	Nov 2014	Dec 2014	Jan 2015	Feb 2015	Mar 2015	Apr 2015	May 2015	Jun 2015	Jul 2015	Aug 2015	Sep 2015
Number of Placements	345	338	280	399	356	322	364	372	334	332	334	311	260

Placements* by Age

CY 2012 - September 2015

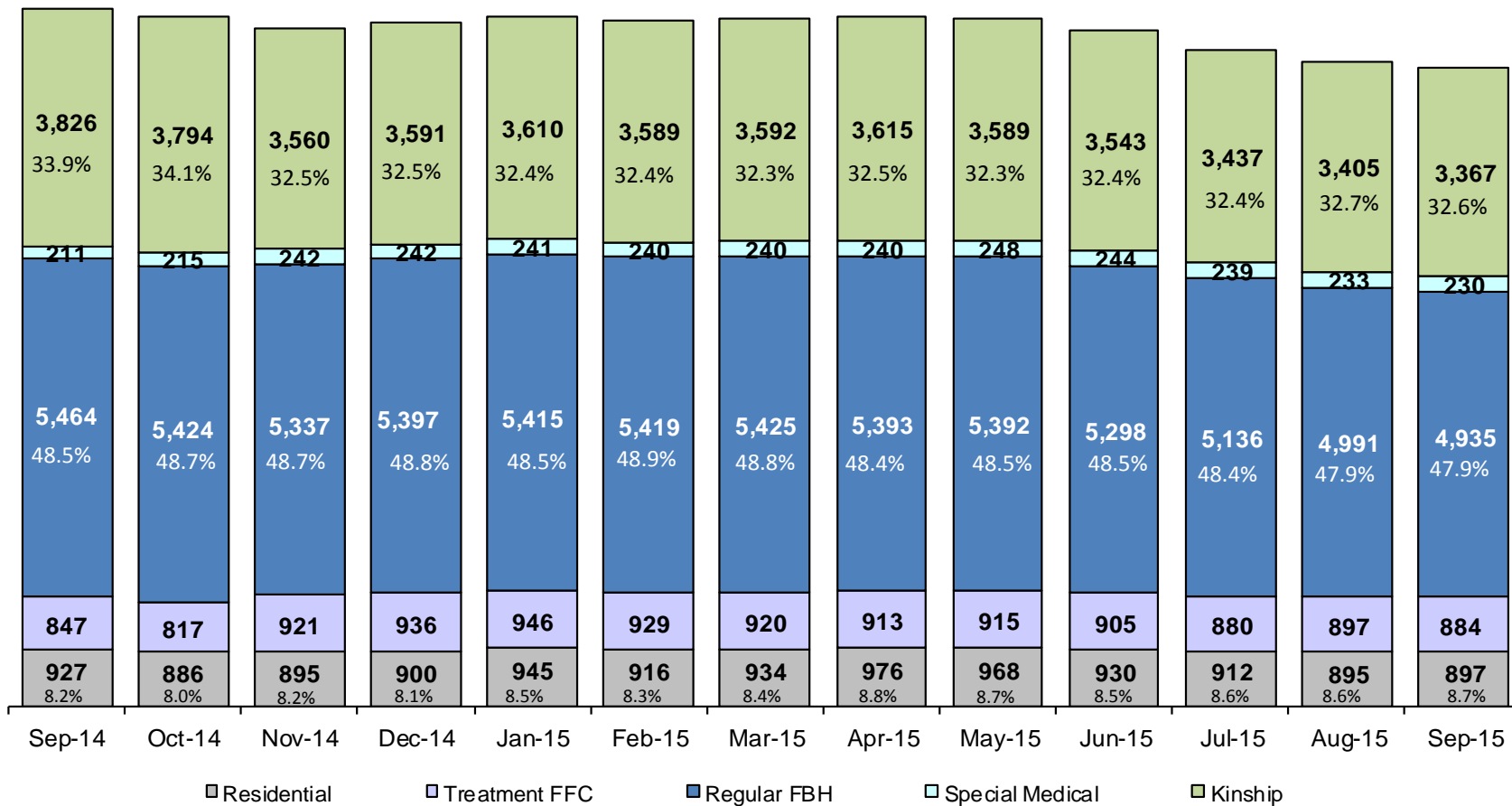


	CY 2012	CY 2013	CY 2014	Jan 2015	Feb 2015	Mar 2015	Apr 2015	May 2015	Jun 2015	Jul 2015	Aug 2015	Sep 2015
Placements (without JDs)	4,823	4,170	3,983	344	305	346	356	312	311	313	286	240

*Excludes JD placements.

Children in Foster Care*

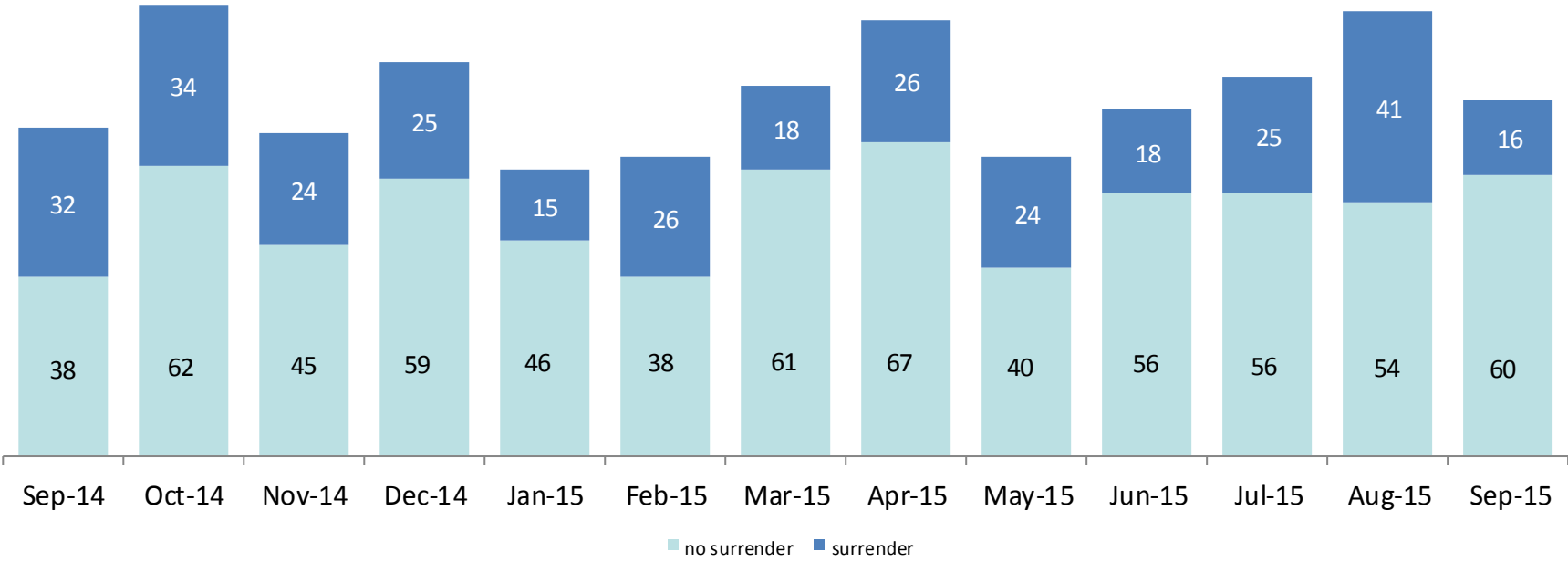
September 2014 – September 2015 (end of month)



	Sep 2014	Oct 2014	Nov 2014	Dec 2014	Jan 2015	Feb 2015	Mar 2015	Apr 2015	May 2015	Jun 2015	Jul 2015	Aug 2015	Sep 2015
Number in Foster Care	11,275	11,136	10,955	11,066	11,157	11,093	11,111	11,137	11,112	10,920	10,604	10,421	10,313

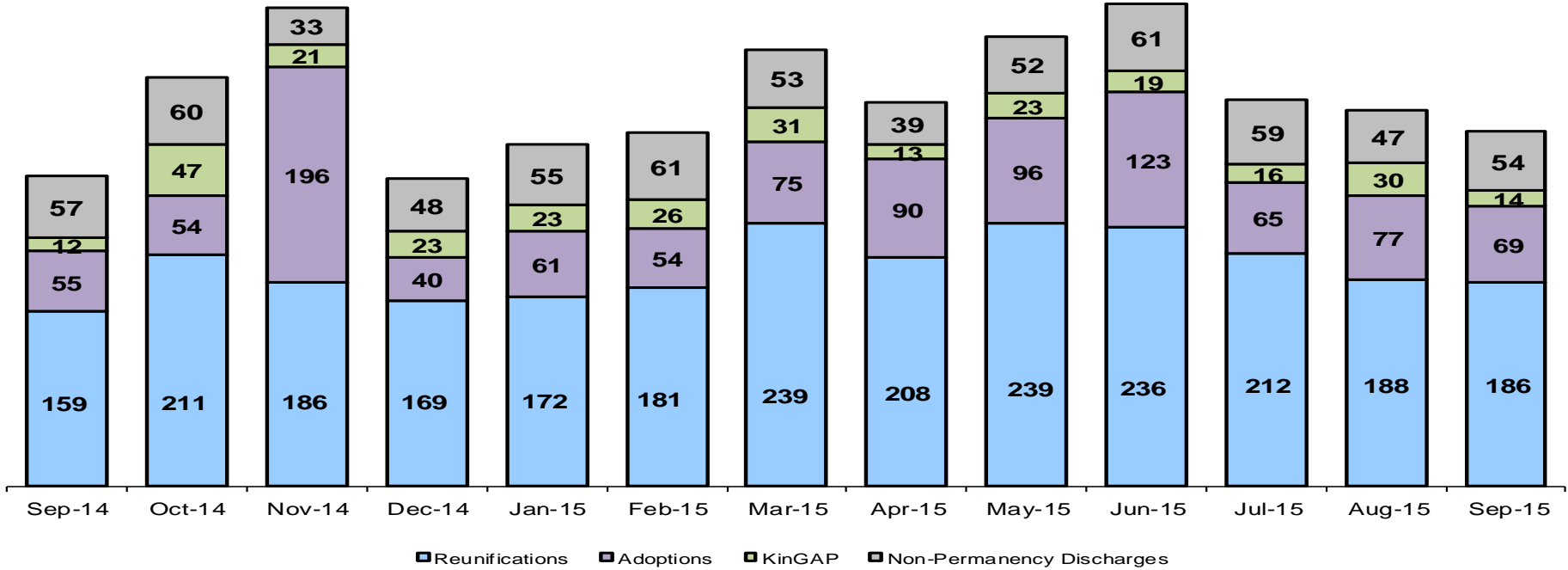
*Excludes JD placements and includes approximately 400 young children who are living in foster homes or residential care facilities with their mothers who are in foster care (8D children).

Children Freed for Adoption, Surrender by at Least One Parent September 2014 – September 2015



	Sep 2014	Oct 2014	Nov 2014	Dec 2014	Jan 2015	Feb 2015	Mar 2015	Apr 2015	May 2015	Jun 2015	Jul 2015	Aug 2015	Sep 2015
Number Freed for Adoption	70	96	69	84	61	64	79	93	64	74	81	95	76

Permanency and Non-Permanency* Discharges from Foster Care** September 2014 – September 2015



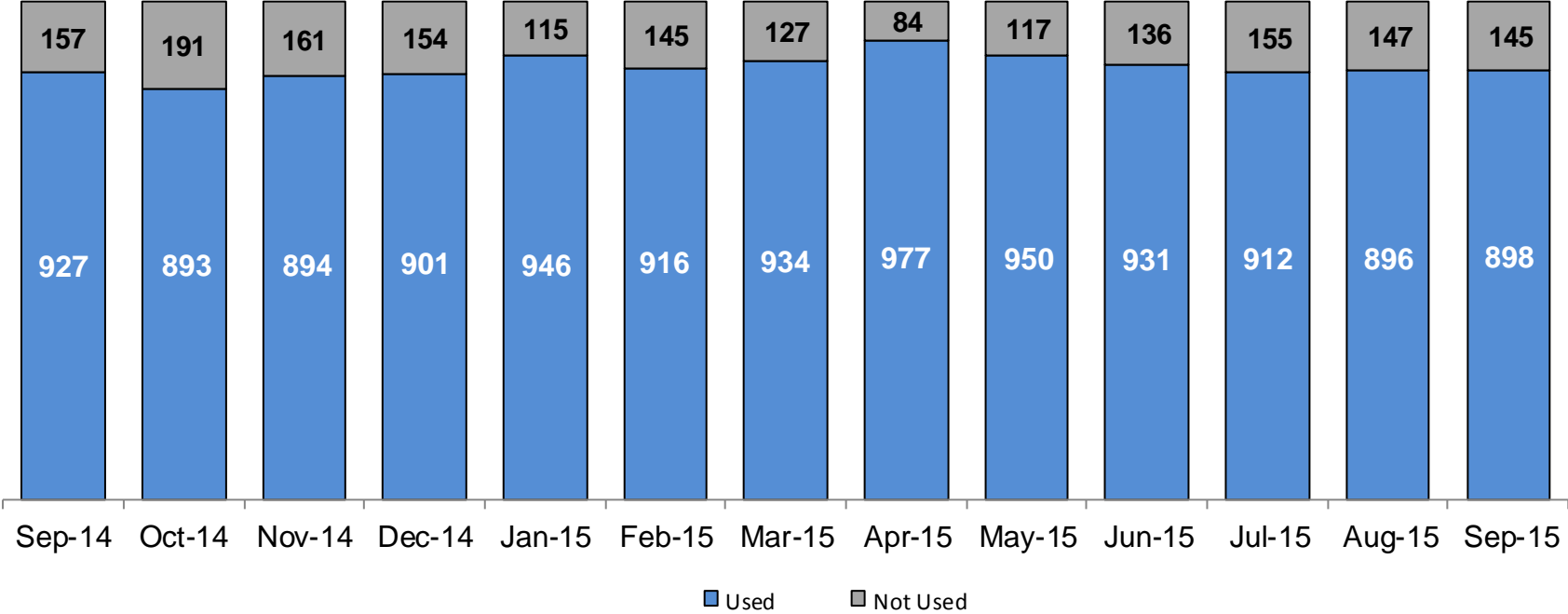
	Sep 2014	Oct 2014	Nov 2014	Dec 2014	Jan 2015	Feb 2015	Mar 2015	Apr 2015	May 2015	Jun 2015	Jul 2015	Aug 2015	Sep 2015
Number of Discharges	283	372	436	280	311	322	398	350	410	439	352	342	323

*Non-permanency discharges include AWOL, APPLA , other discharge destinations such as psychiatric institutions and correctional facilities and discharges with unspecified destinations.

**Excludes discharges of youth who entered care as a JD.

Residential Care Capacity and Utilization

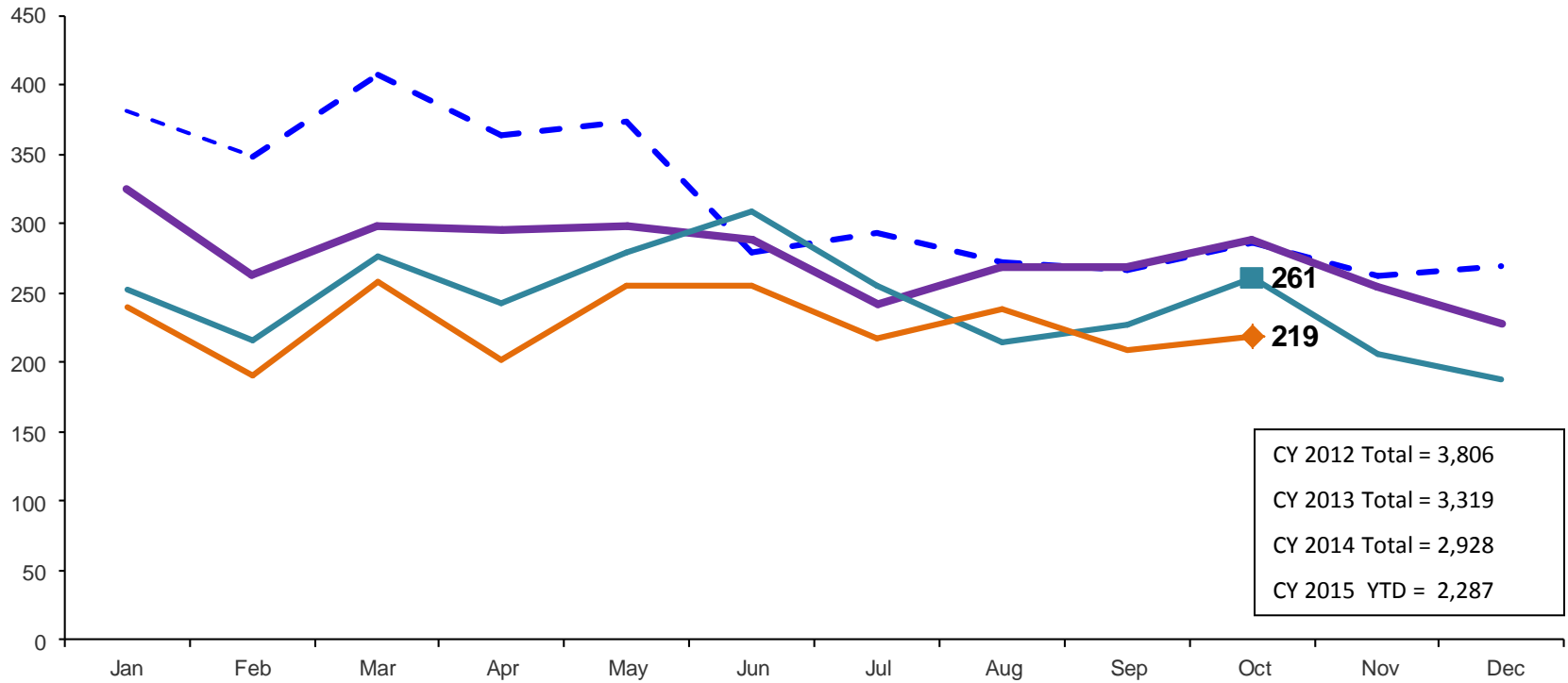
September 2014 – September 2015



	Sep 2014	Oct 2014	Nov 2014	Dec 2014	Jan 2015	Feb 2015	Mar 2015	Apr 2015	May 2015	Jun 2015	Jul 2015	Aug 2015	Sep 2015
Capacity	1,084	1,084	1,055	1,055	1,061	1,061	1,061	1,061	1,067	1,067	1,067	1,043	1,043

Total Monthly Admissions to Detention

February 2012 – October 2015 (Monthly Total)

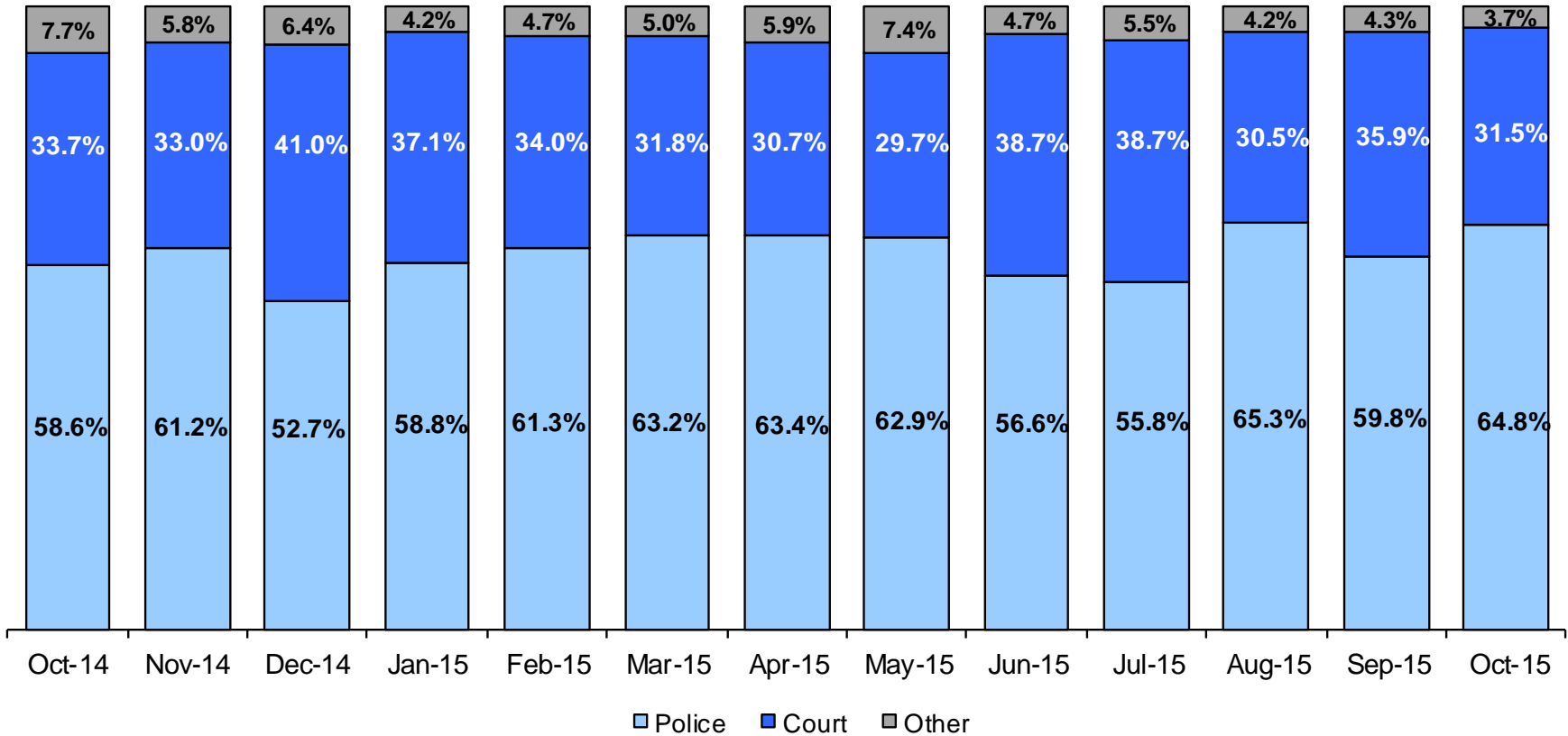


CY 2012 Total = 3,806
 CY 2013 Total = 3,319
 CY 2014 Total = 2,928
 CY 2015 YTD = 2,287



Admit Authority on Admissions

October 2014 – October 2015 (Monthly Total)



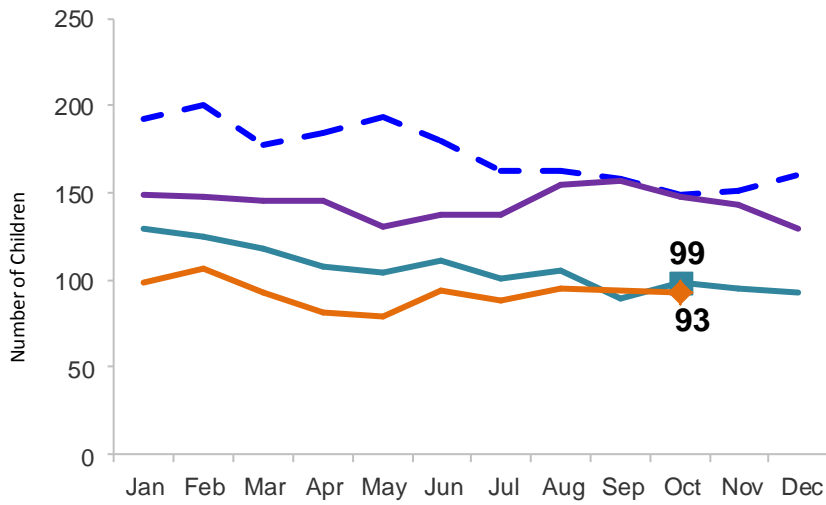
	Oct 2014	Nov 2014	Dec 2014	Jan 2015	Feb 2015	Mar 2015	Apr 2015	May 2015	Jun 2015	July 2015	Aug 2015	Sep 2015	Oct 2015
Number of Admissions	261	206	188	240	191	258	202	256	256	217	239	209	219

Note: Other Admit Authority includes the Sheriff Department, Department of Corrections and ACS.

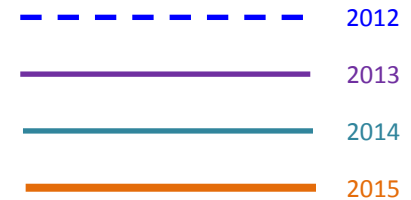
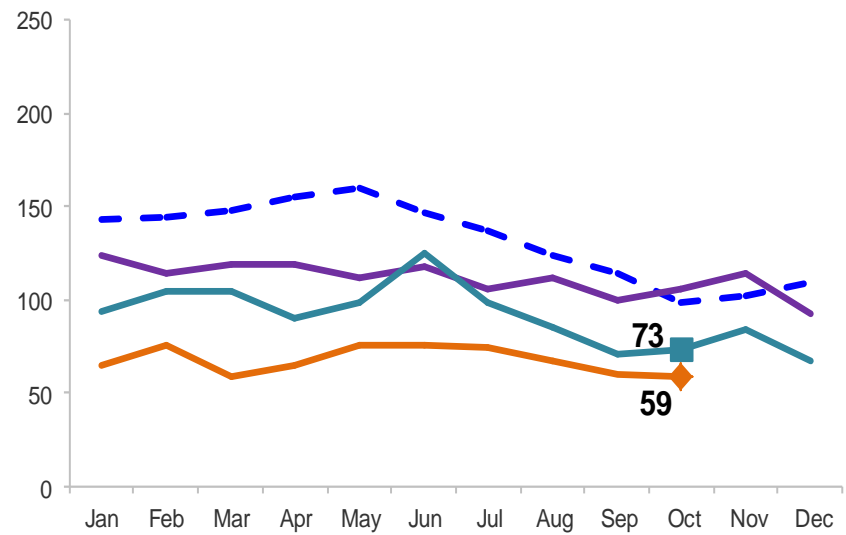
Monthly Average Daily Population

January 2012 – October 2015

Secure Detention

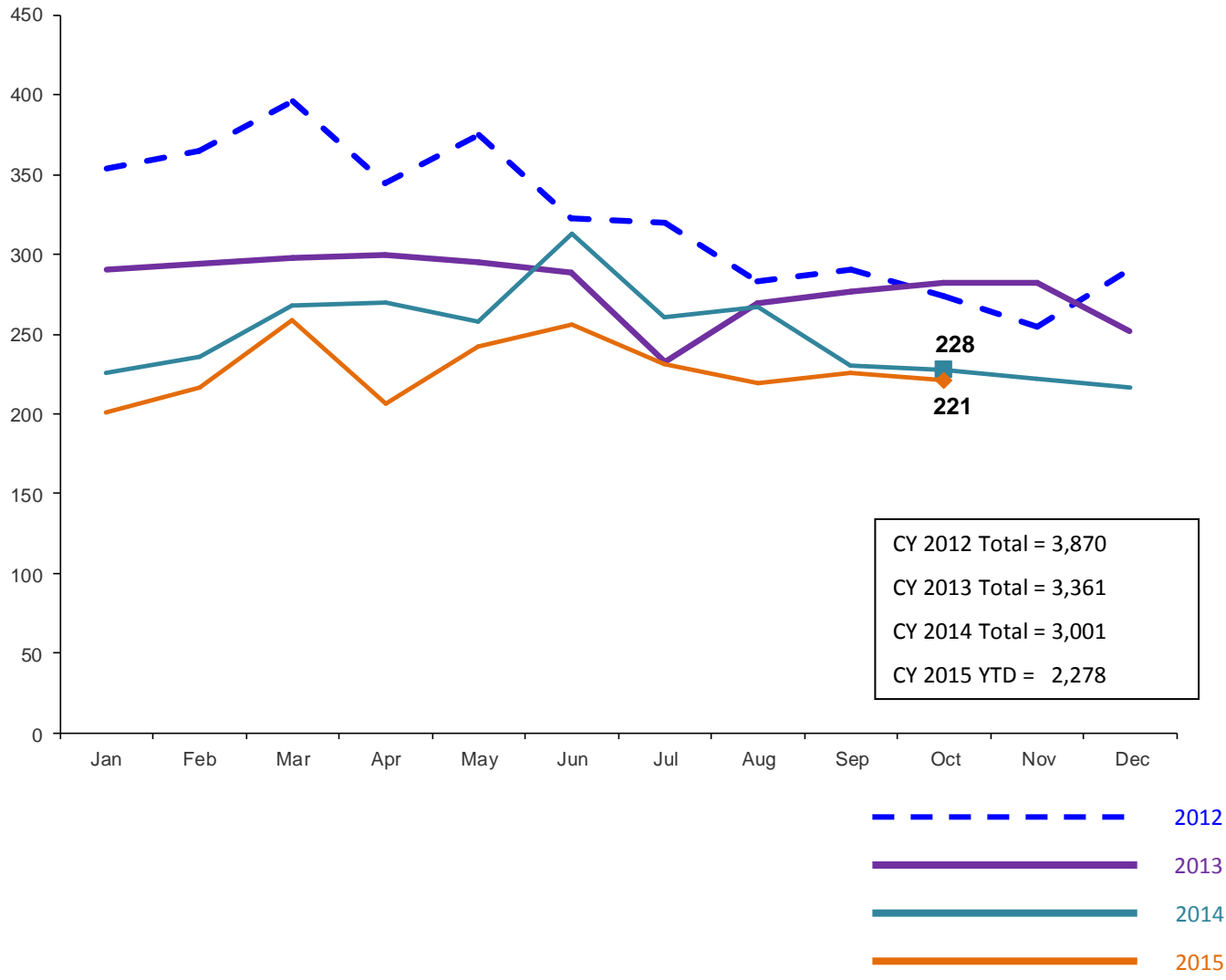


Non-Secure Detention



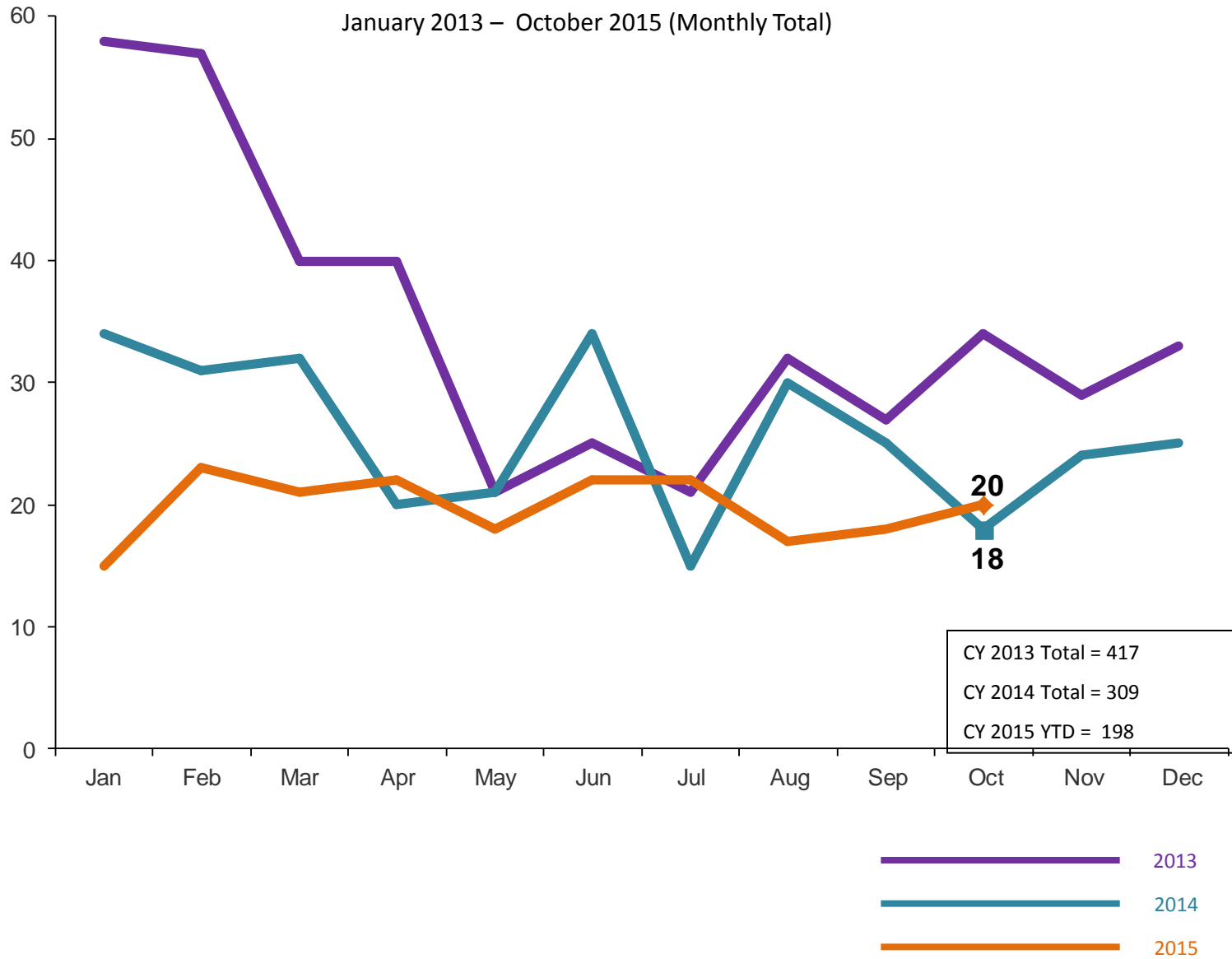
Total Monthly Releases from Detention

January 2012 – October 2015 (Monthly Total)



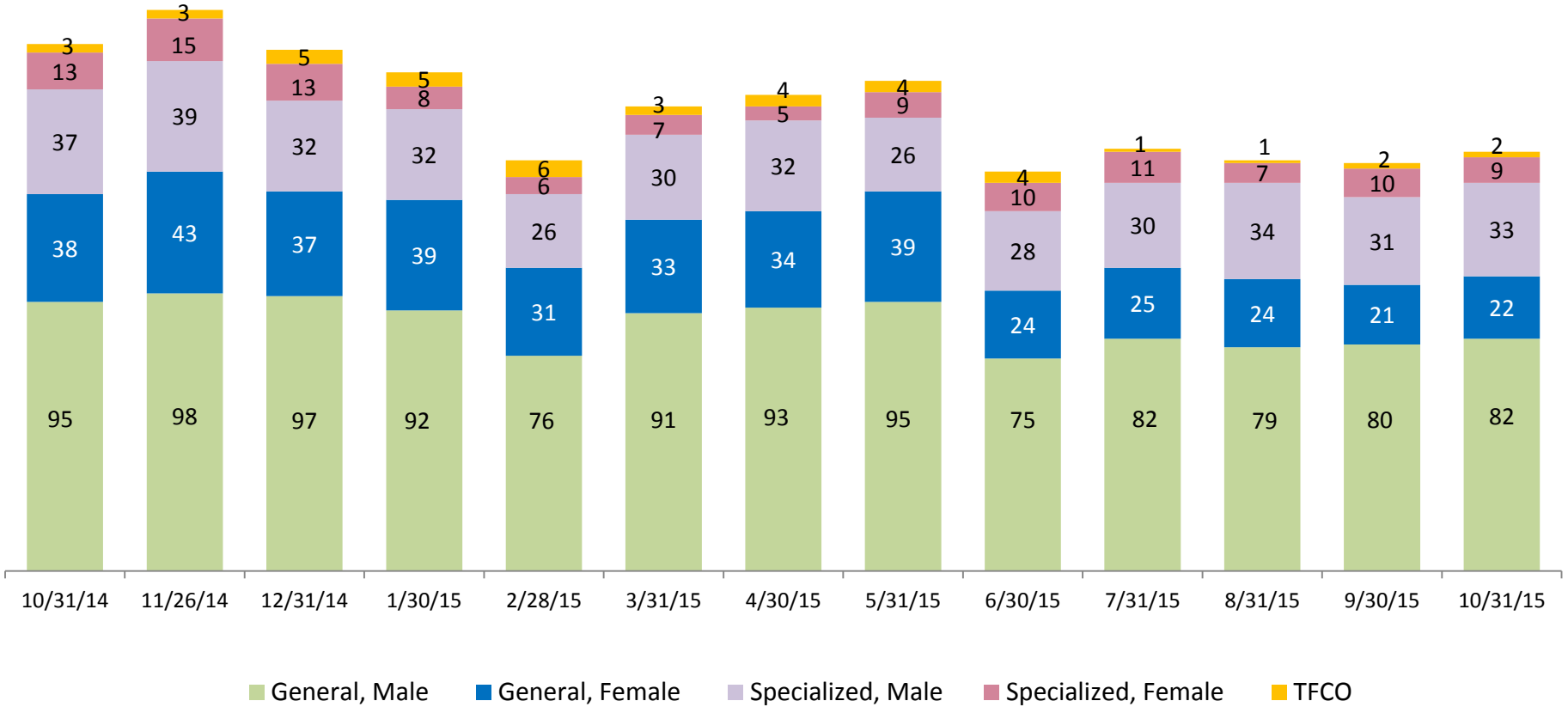
ACS NSP Intakes

January 2013 – October 2015 (Monthly Total)



ACS Non-Secure Placement, in 24-hour Care

October 2014 – October 2015 (Point-in-Time)



	10/31/14	11/26/14	12/31/14	1/30/15	2/28/15	3/31/15	4/30/15	5/31/15	6/30/15	7/31/15	8/31/15	9/30/15	10/31/15
Number in Placement	186	198	184	176	145	164	168	173	141	149	145	144	148

Releases from NSP to Aftercare

January 2013 – October 2015 (Monthly Total)



Appendix

Figure 1: SCR Intakes by Borough, AUG 14 – OCT 14 and AUG 15 – OCT 15

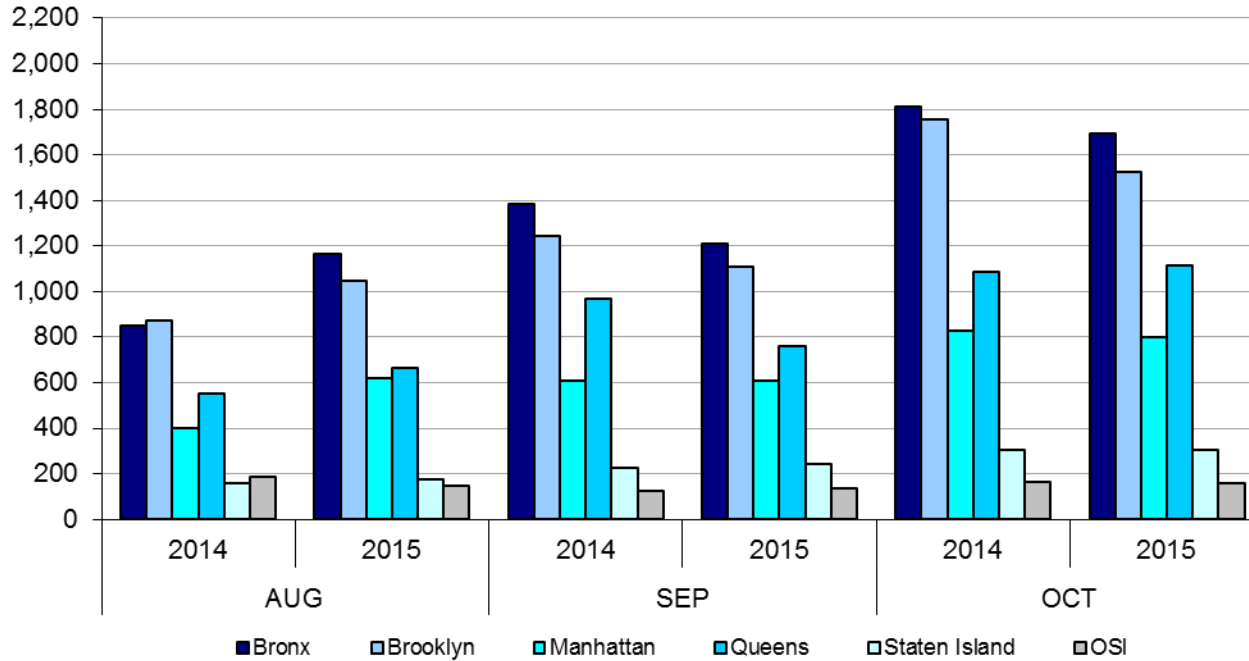


Table 1 - SCR Intake Changes by Borough, AUG 14 – OCT 14 and AUG 15 – OCT 15

Month	Year	Bronx	Brooklyn	Manhattan	Queens	Staten Island	OSI	Other	Total
AUG	2014	852	873	398	552	158	185	91	3,109
	2015	1,164	1,048	620	662	175	146	124	3,939
	% Change	36.6%	20.0%	55.8%	19.9%	10.8%	-21.1%	36.3%	26.7%
SEP	2014	1,386	1,242	610	967	224	123	131	4,683
	2015	1,210	1,107	610	762	245	138	149	4,221
	% Change	-12.7%	-10.9%	0.0%	-21.2%	9.4%	12.2%	13.7%	-9.9%
OCT	2014	1,814	1,753	826	1,088	305	166	165	6,117
	2015	1,694	1,526	797	1,117	304	158	129	5,725
	% Change	-6.6%	-12.9%	-3.5%	2.7%	-0.3%	-4.8%	-21.8%	-6.4%
Total	2014	4,052	3,868	1,834	2,607	687	474	387	13,909
	2015	4,068	3,681	2,027	2,541	724	442	402	13,885
	% Change	0.4%	-4.8%	10.5%	-2.5%	5.4%	-6.8%	3.9%	-0.2%

Figure 2: Citywide SCR Intakes by Reporter Group, AUG 14 – OCT 14 and AUG 15 – OCT 15

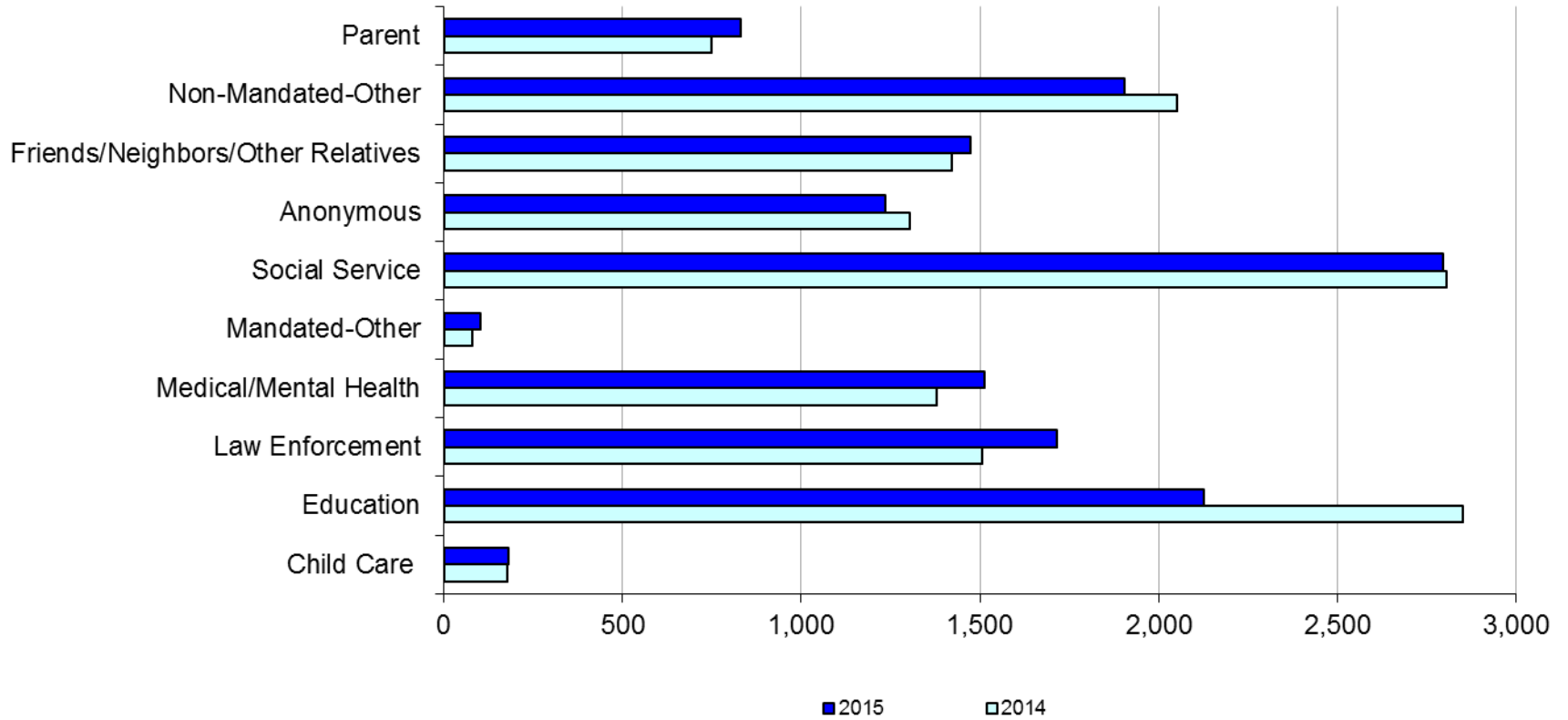
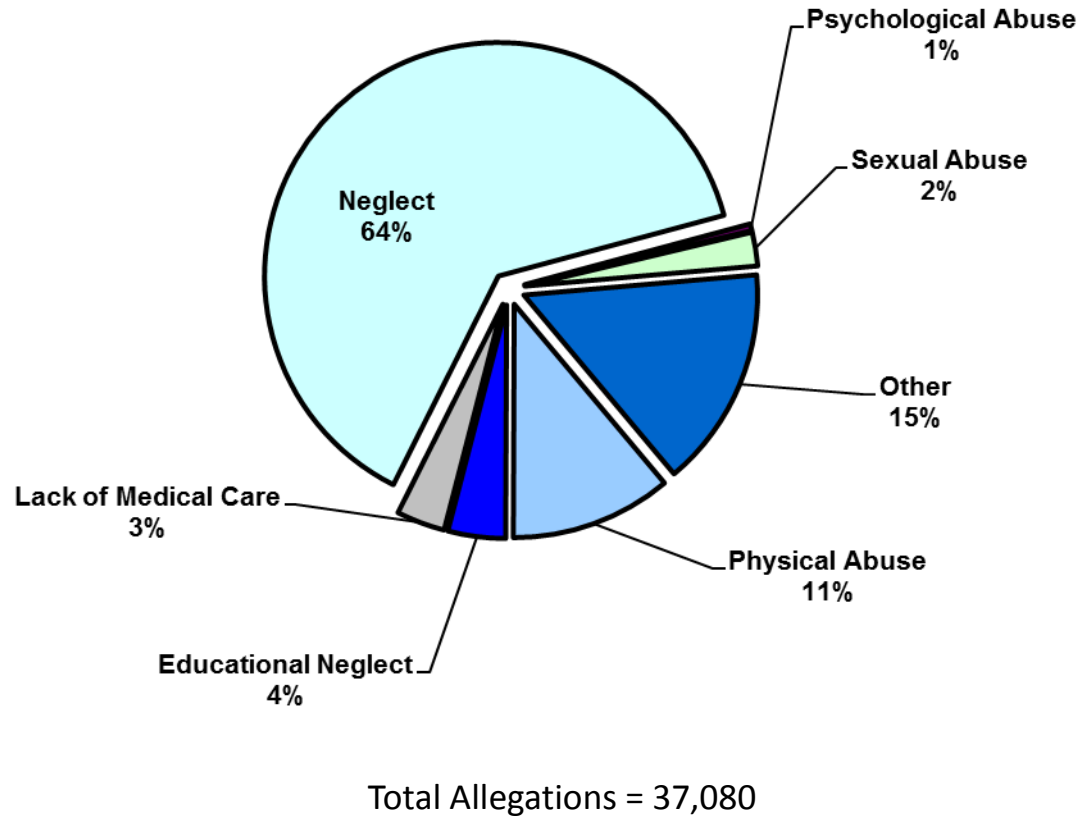


Table 2 - SCR Intakes by Reporter Group, AUG 14 – OCT 14 and AUG 15 – OCT 15

Year	Child Care/ Substitute Care Personnel	Educational Personnel	Law Enforcement	Medical/ Mental Health Personnel	Mandated- Other	Social Service Personnel	Anonymous	Friends/ Neighbors/ Other Relatives	Non- Mandated- Other	Parent	Foster Parent	Total
Bronx												
2014	47	875	324	429	26	828	384	443	616	197	2	4,171
2015	43	612	458	458	36	834	378	437	598	212	0	4,066
% Change	-8.5%	-30.1%	41.4%	6.8%	38.5%	0.7%	-1.6%	-1.4%	-2.9%	7.6%	-100.0%	-2.5%
Brooklyn												
2014	41	841	453	354	15	735	375	399	597	193	2	4,005
2015	53	621	506	364	24	635	368	423	464	222	1	3,681
% Change	29.3%	-26.2%	11.7%	2.8%	60.0%	-13.6%	-1.9%	6.0%	-22.3%	15.0%	-50.0%	-8.1%
Manhattan												
2014	34	299	265	202	18	389	147	174	297	85	0	1,910
2015	30	248	318	230	17	439	166	183	296	98	1	2,026
% Change	-11.8%	-17.1%	20.0%	13.9%	-5.6%	12.9%	12.9%	5.2%	-0.3%	15.3%	--	6.1%
Queens												
2014	23	608	282	238	11	542	262	264	328	128	0	2,686
2015	17	483	260	288	16	567	195	265	303	146	0	2,540
% Change	-26.1%	-20.6%	-7.8%	21.0%	45.5%	4.6%	-25.6%	0.4%	-7.6%	14.1%	--	-5.4%
Staten Island												
2014	5	168	71	57	4	107	90	90	80	33	1	706
2015	10	129	80	88	1	104	75	114	86	37	0	724
% Change	100.0%	-23.2%	12.7%	54.4%	-75.0%	-2.8%	-16.7%	26.7%	7.5%	12.1%	-100.0%	2.5%
OSI												
2014	22	35	20	41	6	76	31	26	94	70	2	423
2015	25	18	19	40	4	75	37	24	120	75	4	441
% Change	13.6%	-48.6%	-5.0%	-2.4%	-33.3%	-1.3%	19.4%	-7.7%	27.7%	7.1%	100.0%	4.3%
Other												
2014	5	25	90	59	0	127	16	26	38	43	0	429
2015	4	15	74	46	6	141	17	29	37	39	0	408
% Change	-20.0%	-40.0%	-17.8%	-22.0%	--	11.0%	6.3%	11.5%	-2.6%	-9.3%	--	-4.9%
Citywide												
2014	177	2,851	1,505	1,380	80	2,804	1,305	1,422	2,050	749	7	14,330
2015	182	2,126	1,715	1,514	104	2,795	1,236	1,475	1,904	829	6	13,886
% Change	2.8%	-25.4%	14.0%	9.7%	30.0%	-0.3%	-5.3%	3.7%	-7.1%	10.7%	-14.3%	-3.1%

Figure 3: SCR Allegations, AUG 15 – OCT 15



Allegations are grouped as follows: Physical Abuse - burn, fatality, fracture, choking, twisting, shaking, excessive corporal punishment, internal injuries, lacerations, bruises, welts, poisoning, noxious substances; Educational Neglect – educational neglect; Lack of Medical Care – lack of medical care; Neglect - inadequate guardianship, inadequate food, clothing, shelter, lack of supervision, malnutrition, failure to thrive, swelling, dislocations, sprains; Psychological Abuse - isolation, emotional neglect; Sexual Abuse – sexual abuse; and Other -parental drug use, child drug use, abandonment, inappropriate custodial conduct.

Table 3 - SCR Allegations, AUG 14 - OCT 14 and AUG 15 – OCT 15

Year	Physical Abuse	Educational Neglect	Lack of Medical Care	Neglect	Psychological Abuse	Sexual Abuse	Other	Total
Bronx								
2014	1,179	766	422	7,197	41	256	1,649	11,510
2015	1,223	478	394	7,599	42	240	1,732	11,708
% Change	3.7%	-37.6%	-6.6%	5.6%	2.4%	-6.3%	5.0%	1.7%
Brooklyn								
2014	1,181	620	395	6,912	39	246	1,476	10,869
2015	1,184	457	317	6,293	40	284	1,485	10,060
% Change	0.3%	-26.3%	-19.7%	-9.0%	2.6%	15.4%	0.6%	-7.4%
Manhattan								
2014	428	231	156	2,635	33	80	624	4,187
2015	399	184	162	2,658	26	95	612	4,136
% Change	-6.8%	-20.3%	3.8%	0.9%	-21.2%	18.8%	-1.9%	-1.2%
Queens								
2014	884	259	188	4,103	43	124	926	6,527
2015	831	215	205	3,903	37	116	1,030	6,337
% Change	-6.0%	-17.0%	9.0%	-4.9%	-14.0%	-6.5%	11.2%	-2.9%
Staten Island								
2014	179	92	49	1,300	11	32	378	2,041
2015	182	90	71	1,327	8	40	408	2,126
% Change	1.7%	-2.2%	44.9%	2.1%	-27.3%	25.0%	7.9%	4.2%
OSI								
2014	301	28	59	1,146	8	58	167	1,767
2015	216	30	56	1,076	17	61	146	1,602
% Change	-28.2%	7.1%	-5.1%	-6.1%	112.5%	5.2%	-12.6%	-9.3%
Other								
2014	114	48	41	653	4	31	215	1,106
2015	107	24	45	649	6	32	248	1,111
% Change	-6.1%	-50.0%	9.8%	-0.6%	50.0%	3.2%	15.3%	0.5%
Citywide								
2014	4,266	2,044	1,310	23,946	179	827	5,435	38,007
2015	4,142	1,478	1,250	23,505	176	868	5,661	37,080
% Change	-2.9%	-27.7%	-4.6%	-1.8%	-1.7%	5.0%	4.2%	-2.4%

**TABLE 4 - Purchased Preventive Cases
Opened and Closed
January 2012 to October 2015**

Month	Opened Cases	Closed Cases
2012		
Jan-12	870	629
Feb-12	889	835
Mar-12	944	991
Apr-12	997	870
May-12	1,117	979
Jun-12	965	869
Jul-12	853	979
Aug-12	917	1,007
Sep-12	727	900
Oct-12	875	915
Nov-12	738	702
Dec-12	938	871
2013		
Jan-13	960	884
Feb-13	873	916
Mar-13	962	1,171
Apr-13	940	988
May-13	864	1,337
Jun-13	863	780
Jul-13	868	1,004
Aug-13	802	1,084
Sep-13	844	724
Oct-13	933	765
Nov-13	901	685
Dec-13	1,106	552
2014		
Jan-14	983	640
Feb-14	987	679
Mar-14	1,146	874
Apr-14	1,074	896
May-14	1,042	888
Jun-14	976	762
Jul-14	1,050	1,077
Aug-14	944	943
Sep-14	987	705
Oct-14	1,050	819
Nov-14	818	638
Dec-14	1,268	721
2015		
Jan-15	826	716
Feb-15	1,001	590
Mar-15	1,270	686
Apr-15	1,103	743
May-15	1,048	842
Jun-15	1,196	797
Jul-15	967	1,070
Aug-15	965	891
Sep-15	827	847
Oct-15	879	772

**Table 5 - Referrals to Purchased Preventive Services by Source
January 2012 to October 2015**

Month	Total Referrals	Division of Child Protection	Foster Care Agencies	PPRS Transfer	School	Self	Other Sources*
2012							
Jan-12	1,431	66.5%	0.7%	8.5%	3.6%	3.8%	17.0%
Feb-12	1,043	78.2%	1.1%	9.0%	1.9%	6.7%	3.1%
Mar-12	1,525	73.6%	0.9%	6.0%	1.8%	3.9%	13.8%
Apr-12	1,370	72.8%	1.0%	9.4%	1.2%	4.2%	11.4%
May-12	1,463	70.9%	1.0%	7.6%	1.1%	4.4%	15.0%
Jun-12	1,279	73.8%	0.5%	5.9%	1.0%	4.7%	14.2%
Jul-12	1,308	77.4%	1.2%	7.0%	0.3%	3.7%	10.5%
Aug-12	1,391	74.0%	0.9%	11.7%	0.3%	2.9%	10.2%
Sep-12	1,110	70.5%	1.9%	9.6%	1.2%	5.0%	11.9%
Oct-12	1,159	61.1%	1.4%	12.6%	2.7%	4.9%	17.3%
Nov-12	1,106	67.0%	1.0%	9.9%	2.2%	4.7%	15.3%
Dec-12	1,206	68.7%	0.8%	5.8%	2.7%	5.6%	16.4%
CY 2012	15,391	71.3%	1.0%	8.5%	1.6%	4.5%	13.1%
2013							
Jan-13	1,474	74.1%	1.2%	7.3%	1.2%	3.7%	12.5%
Feb-13	1,308	75.8%	1.1%	8.0%	1.6%	2.9%	10.6%
Mar-13	1,270	73.5%	1.2%	6.7%	2.4%	3.9%	12.3%
Apr-13	1,421	77.9%	0.8%	7.4%	0.9%	3.0%	10.1%
May-13	1,320	68.4%	0.5%	10.2%	1.5%	3.8%	15.5%
Jun-13	953	69.2%	1.2%	9.4%	2.6%	5.0%	12.6%
Jul-13	1,014	66.3%	1.9%	14.4%	1.6%	3.9%	11.9%
Aug-13	1,212	70.5%	0.7%	11.8%	0.7%	4.7%	11.6%
Sep-13	1,262	64.0%	2.1%	11.3%	1.7%	6.7%	14.2%
Oct-13	1,319	61.0%	1.1%	9.0%	2.9%	7.5%	18.5%
Nov-13	1,249	55.9%	1.6%	10.5%	4.6%	9.2%	18.3%
Dec-13	1,464	62.2%	1.2%	8.2%	2.3%	9.2%	17.0%
CY 2013	15,266	68.3%	1.2%	9.4%	2.0%	5.3%	13.8%
2014							
Jan-14	1,537	70.0%	1.2%	6.6%	2.3%	5.8%	14.2%
Feb-14	1,334	69.7%	0.8%	8.4%	1.7%	5.5%	13.9%
Mar-14	1,612	70.0%	1.4%	8.6%	1.6%	5.3%	13.1%
Apr-14	1,525	70.2%	0.9%	7.6%	2.1%	3.7%	15.4%
May-14	1,580	74.4%	0.7%	8.3%	1.4%	5.2%	10.0%
Jun-14	1,550	78.6%	1.2%	6.3%	1.2%	3.2%	9.4%
Jul-14	1,659	79.6%	1.5%	6.7%	0.4%	4.2%	7.6%
Aug-14	1,395	72.2%	1.6%	10.8%	0.3%	4.9%	10.3%
Sep-14	1,597	49.4%	1.5%	7.6%	0.3%	4.5%	36.8%
Oct-14	1,634	68.2%	1.9%	10.0%	1.2%	4.6%	14.1%
Nov-14	1,311	66.4%	0.9%	14.3%	2.4%	3.9%	12.1%
Dec-14	1,785	71.1%	1.4%	8.8%	2.9%	4.8%	11.0%
CY 2014	18,519	70.1%	1.3%	8.6%	1.5%	4.6%	14.0%
2015							
Jan-15	1,430	74.4%	1.6%	8.7%	1.8%	3.8%	9.7%
Feb-15	1,538	76.5%	0.8%	8.1%	1.8%	4.7%	8.2%
Mar-15	1,798	74.6%	0.9%	7.3%	1.6%	4.8%	10.8%
Apr-15	1,719	78.2%	1.3%	7.2%	0.6%	3.5%	9.1%
May-15	1,561	77.2%	1.0%	5.1%	1.5%	4.5%	10.8%
Jun-15	1,716	77.4%	1.1%	7.7%	1.2%	3.5%	9.1%
Jul-15	1,511	79.6%	0.9%	7.2%	0.3%	3.8%	8.2%
Aug-15	1,418	79.3%	2.2%	7.8%	0.2%	3.1%	7.5%
Sep-15	1,209	72.1%	2.8%	10.4%	0.5%	5.5%	8.6%
Oct-15	1,338	70.4%	1.9%	8.3%	2.1%	5.8%	11.6%

*Other Community Sources includes the Department of Homeless Services, Family Court, FAP, Hospitals and Medical facilities, the NYC Housing Authority, PINS/DAS, Probation, and Sponsor Agencies.