

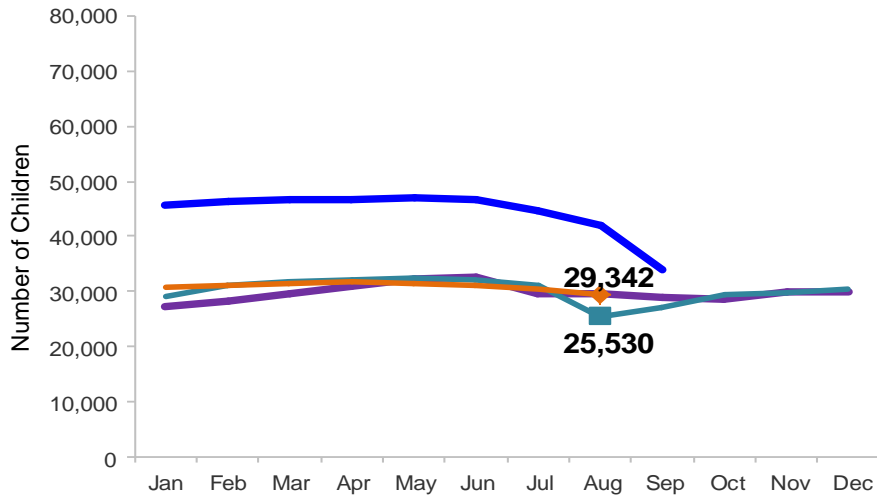


Flash

September 2015

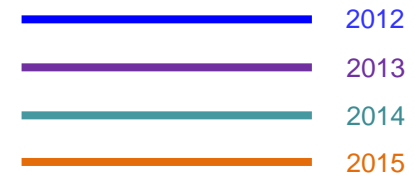
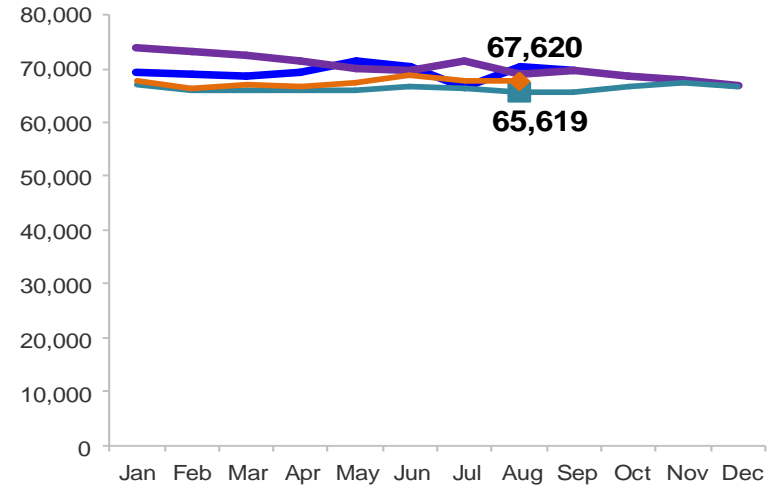
Children Enrolled in Contracted EarlyLearn Programs

January 2012 – August 2015 (End of Month)



Children Using Vouchers for Child Care

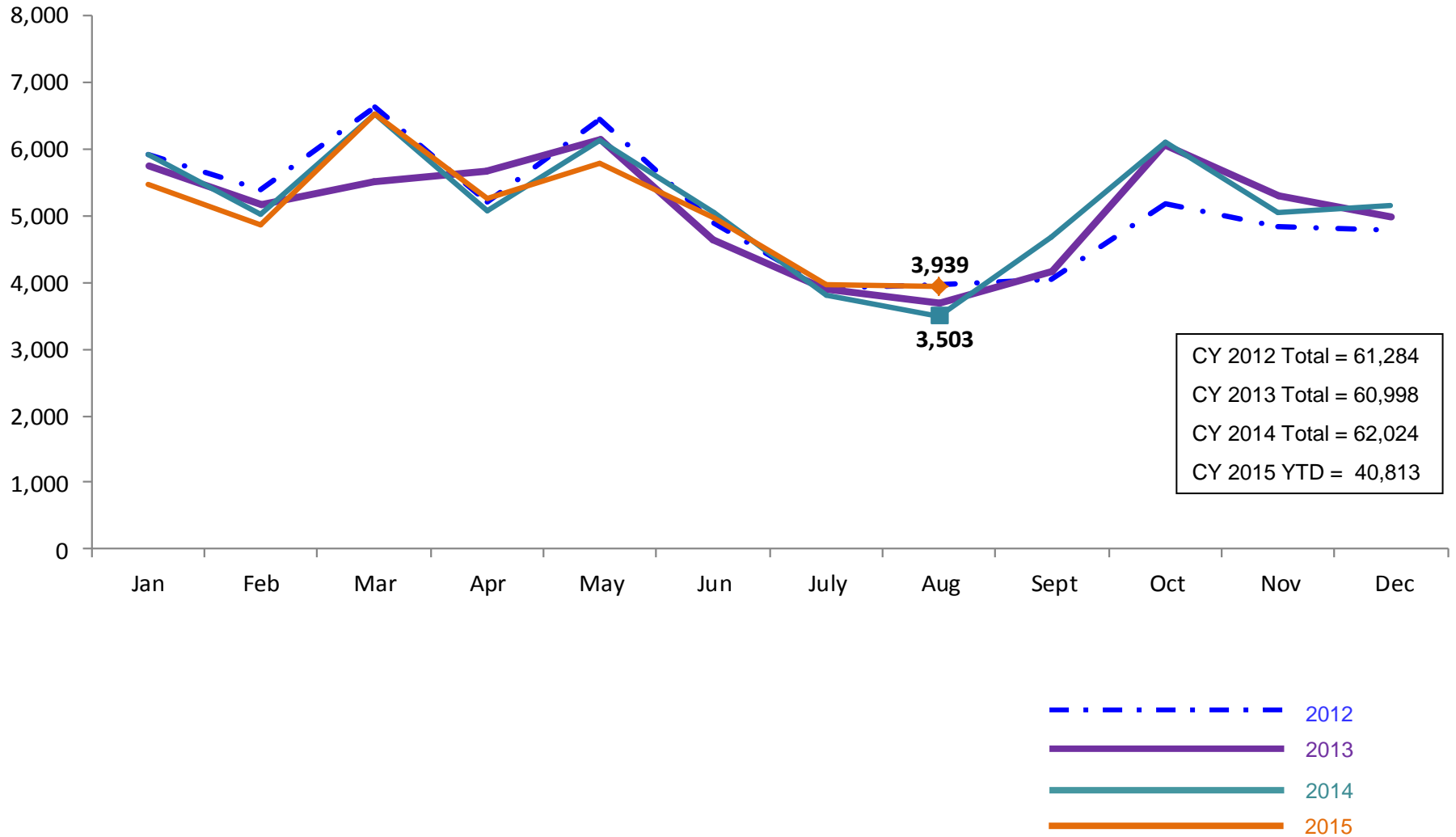
January 2012 – August 2015 (End of Month)



Note: Beginning October 1, 2012 ACS converted its early care and education system to a new model, EarlyLearn NYC. Enrollment data for the transitional months of October – December 2012 are not available because contractors were in the midst of implementing the data collection systems.

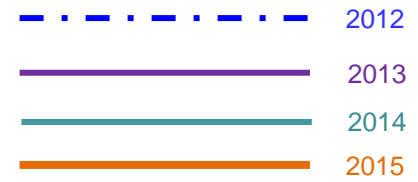
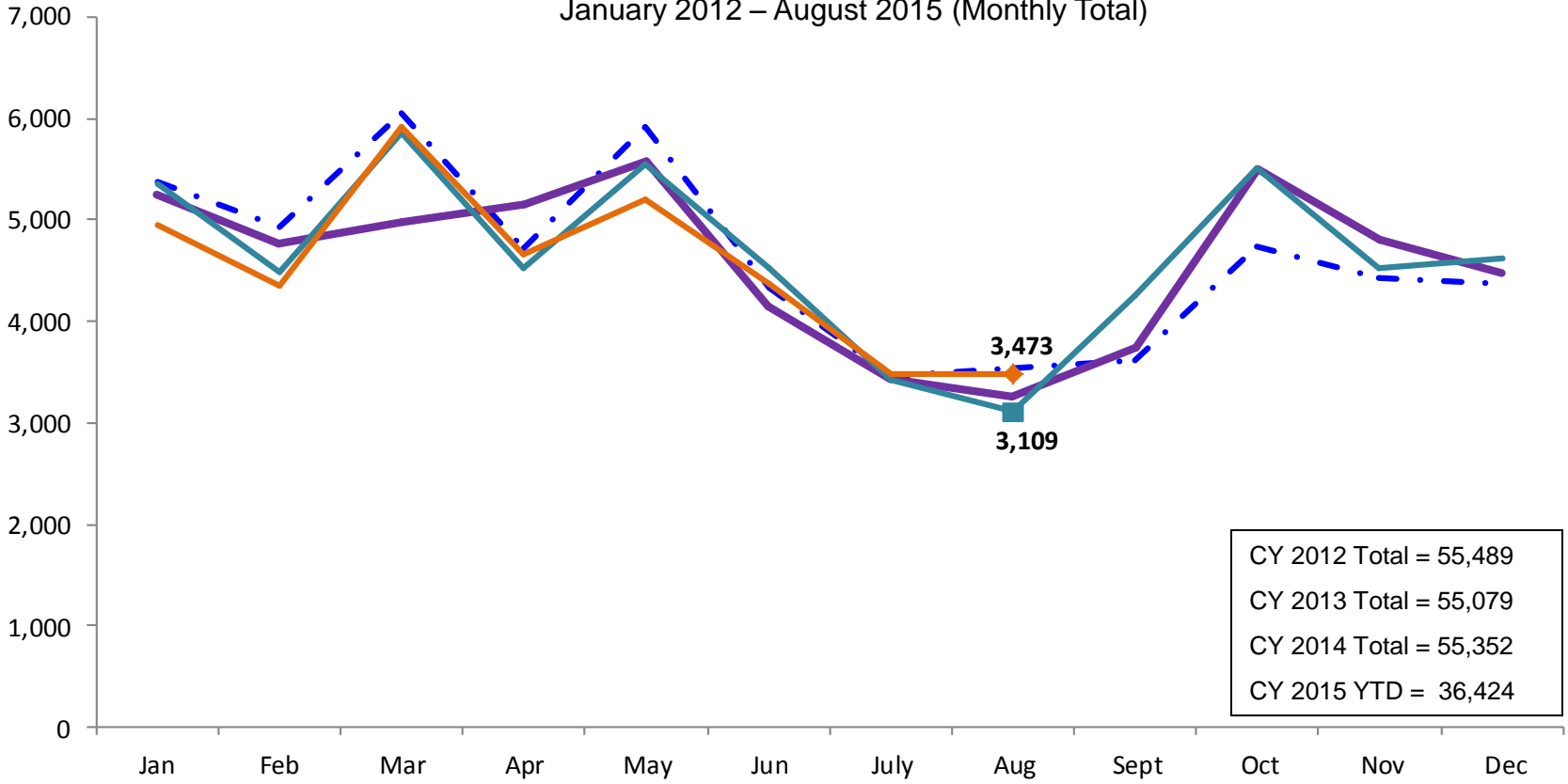
SCR Intakes

January 2012 – August 2015 (Monthly Total)



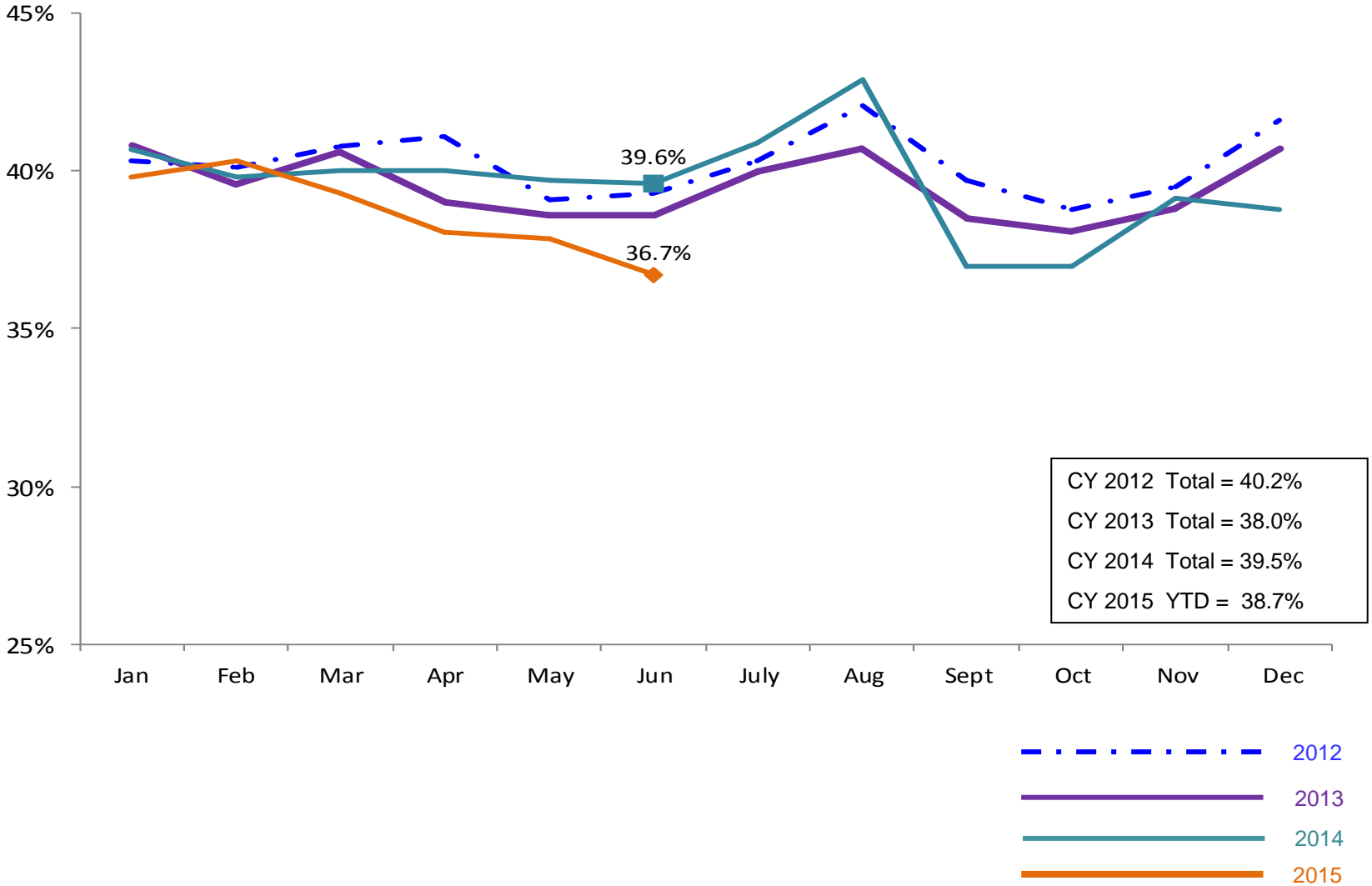
SCR Consolidated Investigations

January 2012 – August 2015 (Monthly Total)



SCR Investigation Indication Rate

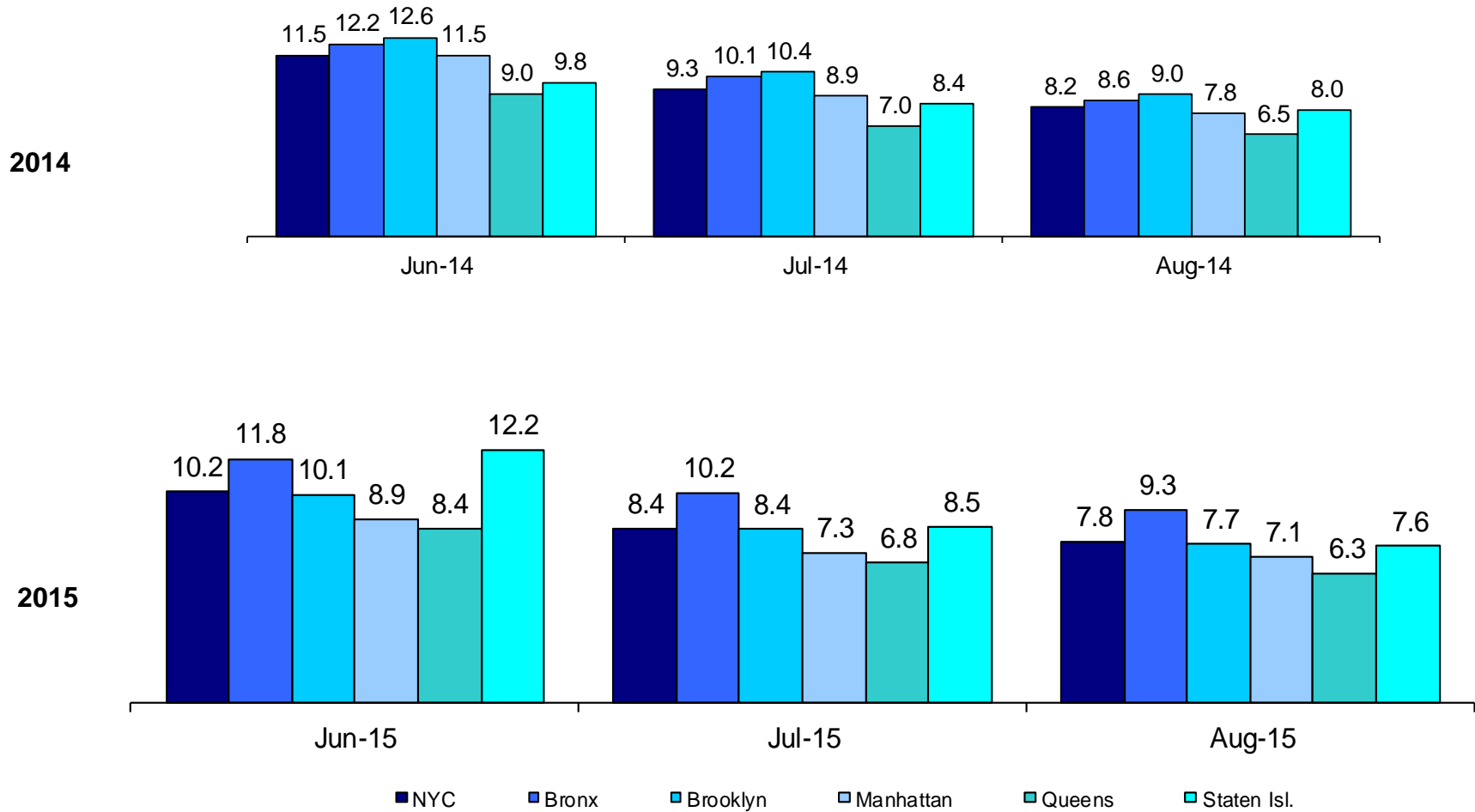
January 2012 – June 2015



CY 2012 Total = 40.2%
 CY 2013 Total = 38.0%
 CY 2014 Total = 39.5%
 CY 2015 YTD = 38.7%

Average P/D Combined Caseload*

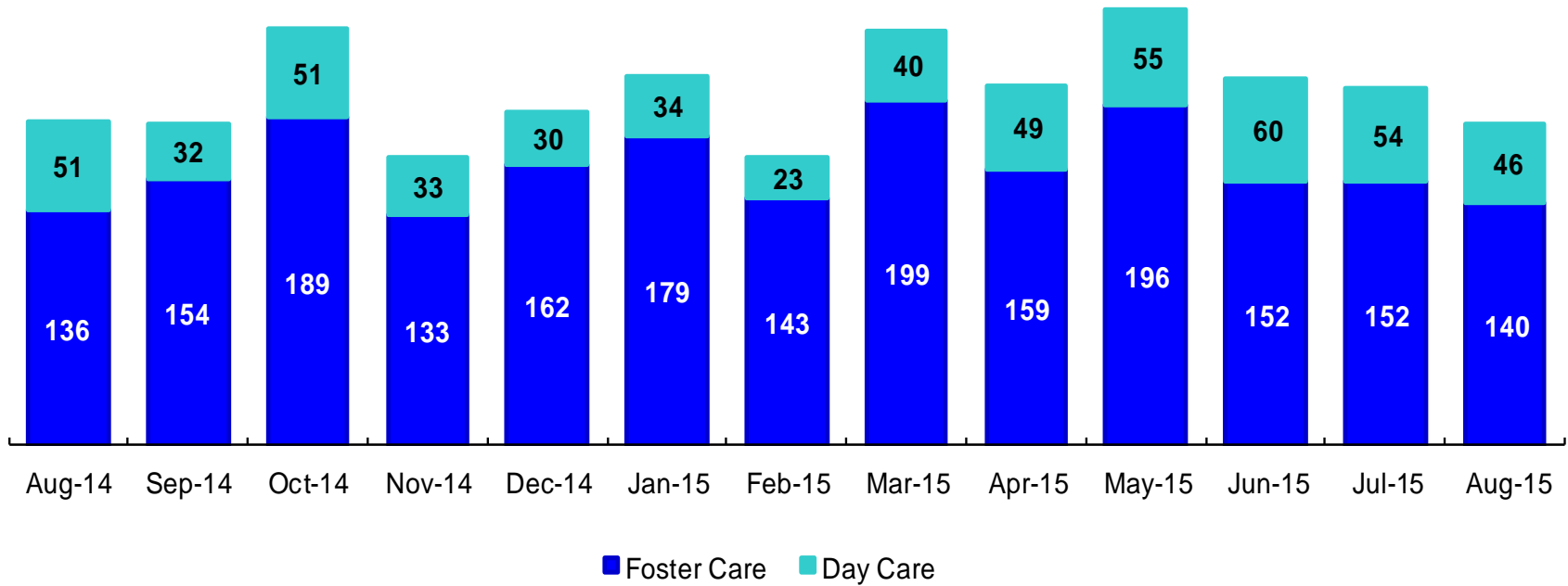
June 2014 – August 2014 & June 2015 – August 2015



* Caseloads are of protective/diagnostic caseworkers only and exclude the caseloads carried by Level I and Level II Supervisors.

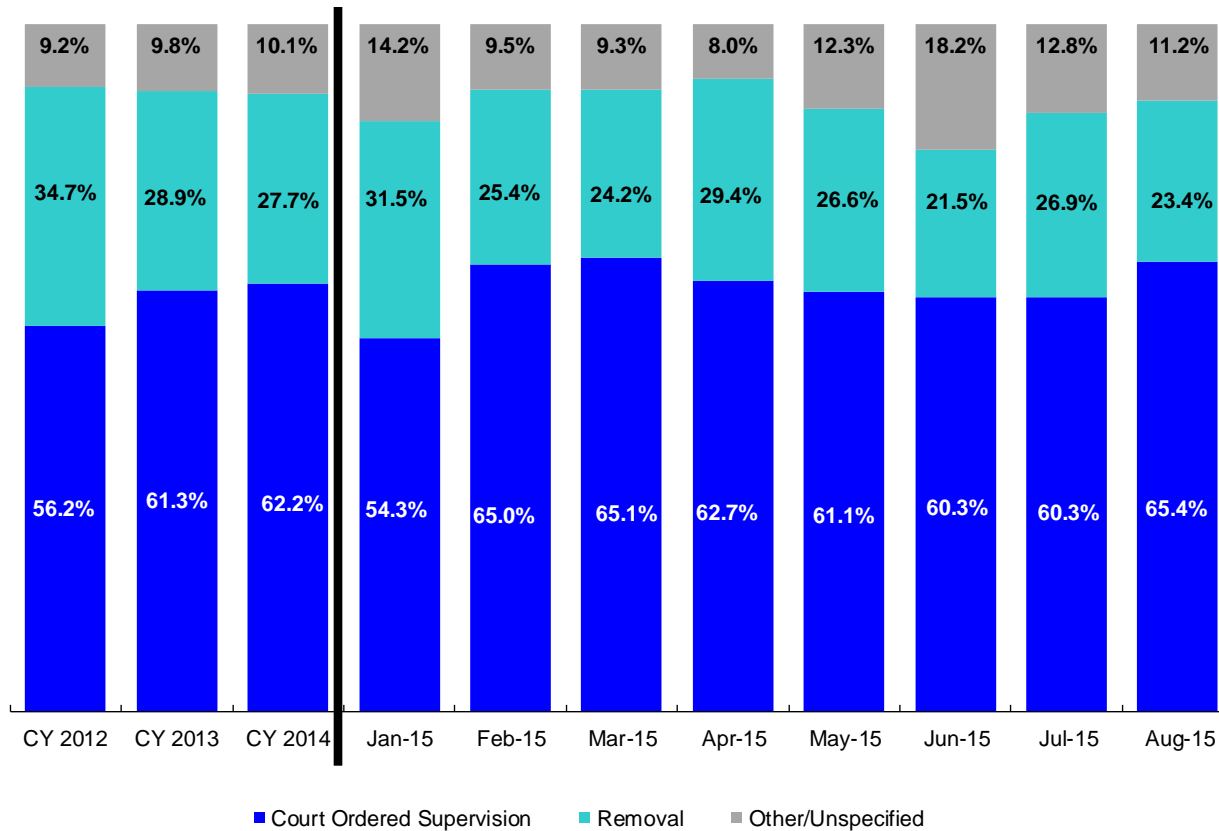
OSI Investigations by Program

August 2014 – August 2015



	Aug 2014	Sep 2014	Oct 2014	Nov 2014	Dec 2014	Jan 2015	Feb 2015	Mar 2015	Apr 2015	May 2015	Jun 2015	Jul 2015	Aug 2015
Number of Investigations	187	186	240	166	192	213	166	239	208	251	212	206	186

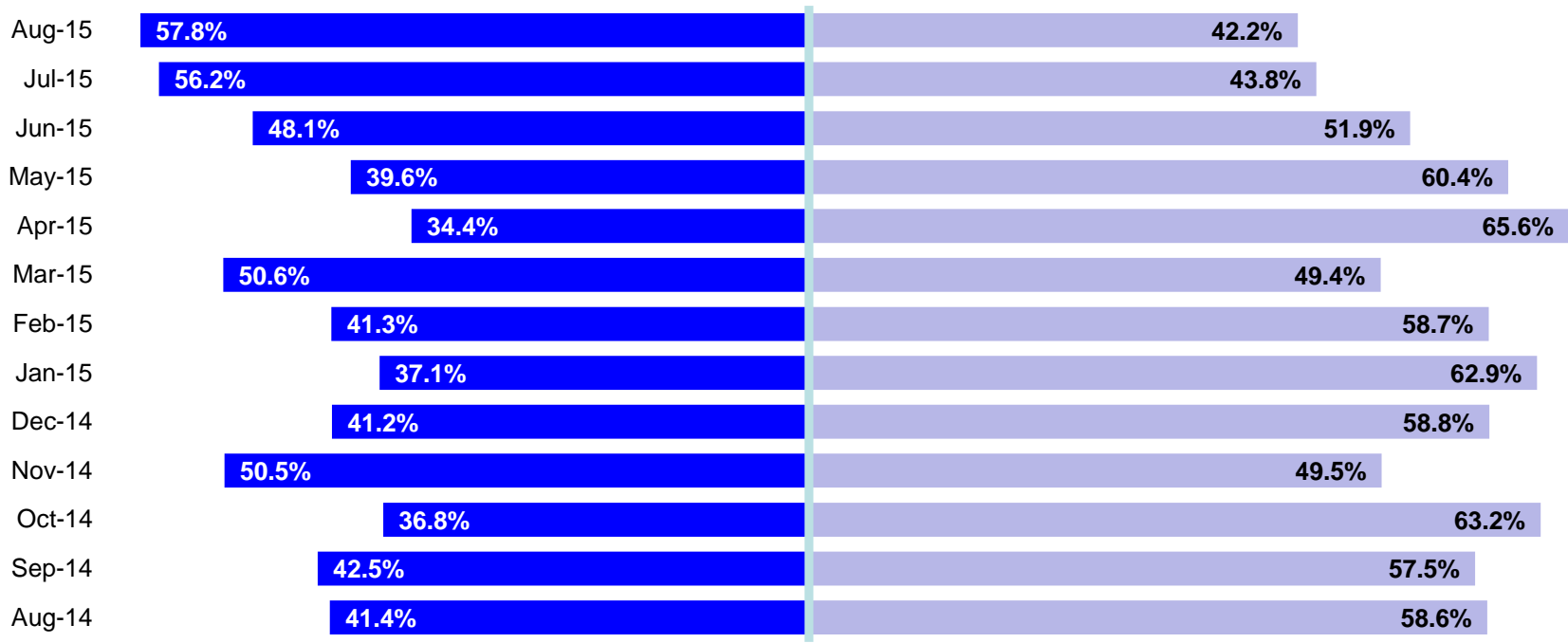
Article 10 Total Filings & Filing Outcomes, CY 2012 – August 2015



	CY 2012	CY 2013	CY 2014	Jan 2015	Feb 2015	Mar 2015	Apr 2015	May 2015	Jun 2015	July 2015	Aug 2015
Article 10 Filings	8,913	9,318	9,900	812	924	1,012	892	940	959	875	769

Note: The category “Other/Unspecified” includes released with no supervision, no order issued and no outcome specified. Outcomes of cases heard the next day are not captured in this report

Article 10 Filing Removals, August 2014 – August 2015



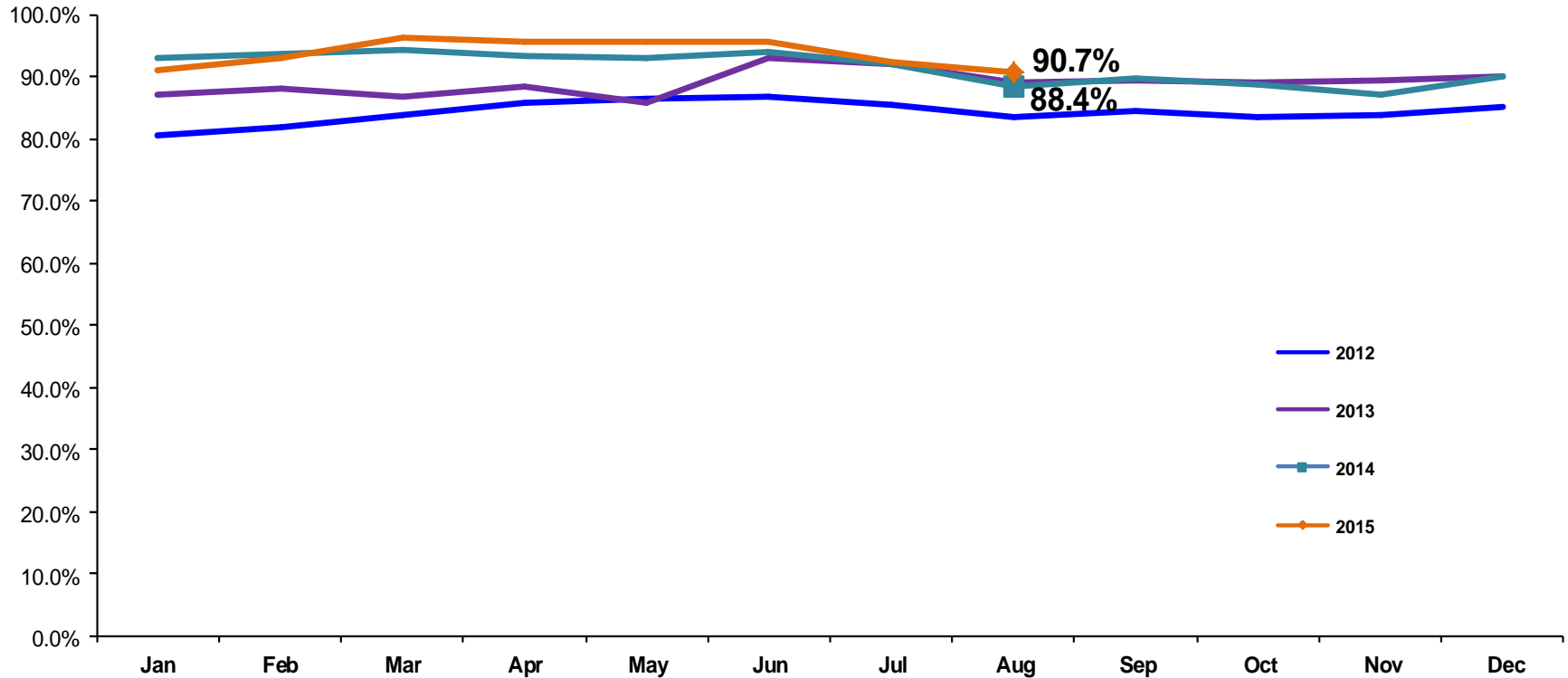
■ Pre-Filing Emergency Removals (court approved at initial hearing) ■ Post-Filing Removals (court ordered at initial hearing)

	Aug 2014	Sep 2014	Oct 2014	Nov 2014	Dec 2014	Jan 2015	Feb 2015	Mar 2015	Apr 2015	May 2015	Jun 2015	July 2015	Aug 2015
Number of Removals	227	179	231	194	262	256	235	245	262	250	206	235	180

PPRS Utilization Rate

January 2012 – August 2015 (End of Month)

General Preventive



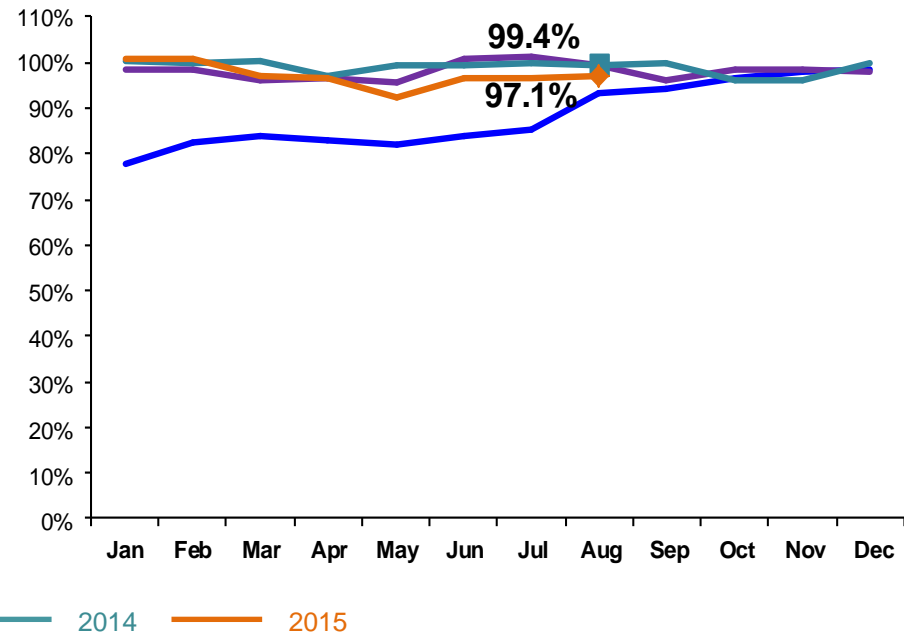
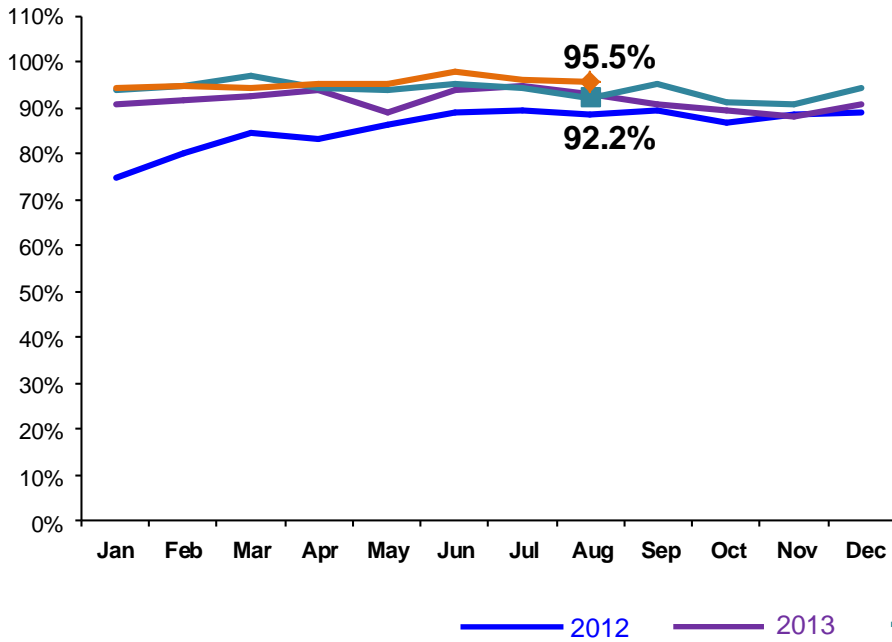
Notes: 1) Beacons programs are included in the GP utilization rates. 2) During June-October 2013 GP programs in the process of converting to EBMs were excluded from the GP utilization statistics.

PPRS Utilization Rate

January 2012 – August 2015 (End of Month)

Family Treatment Rehabilitation

Medically Fragile

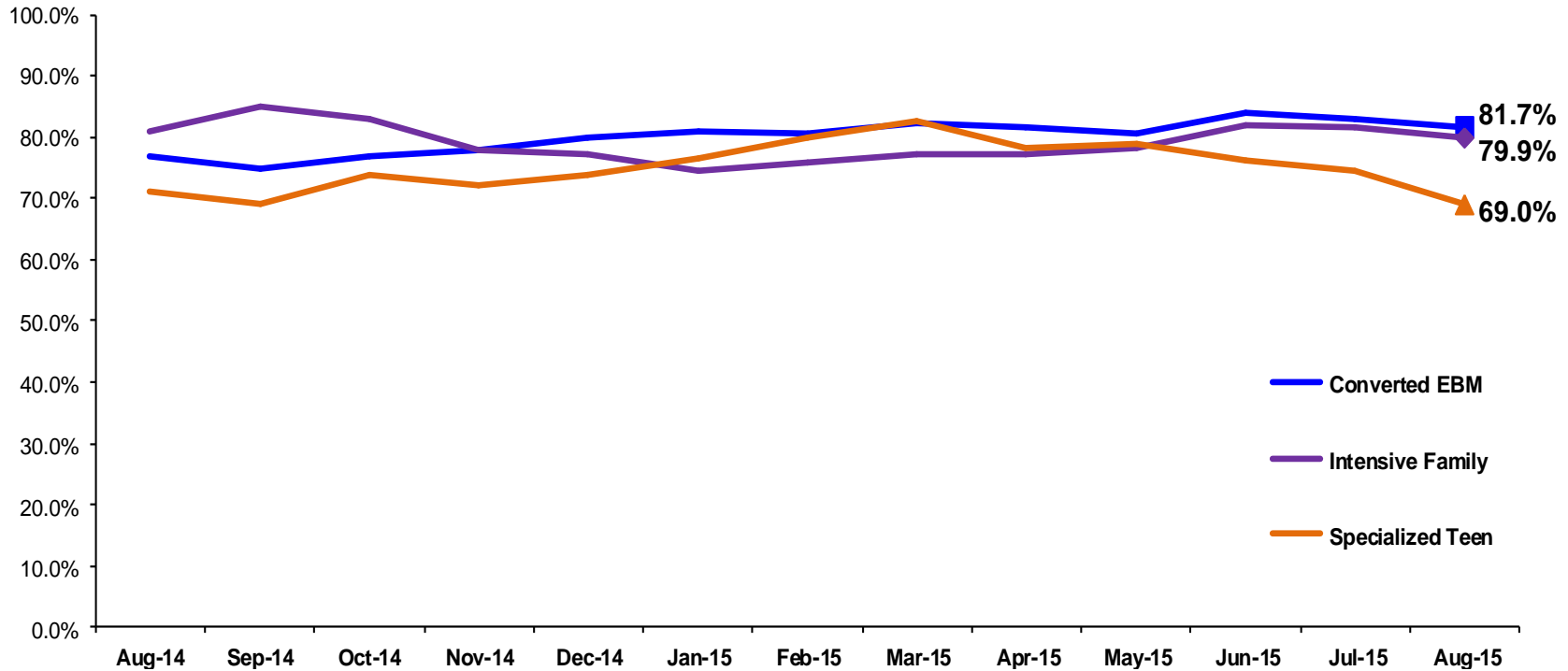


Note: During June–October 2013 FTR programs in the process of converting to EBMs were excluded from the FTR utilization statistics.

PPRS Utilization Rate

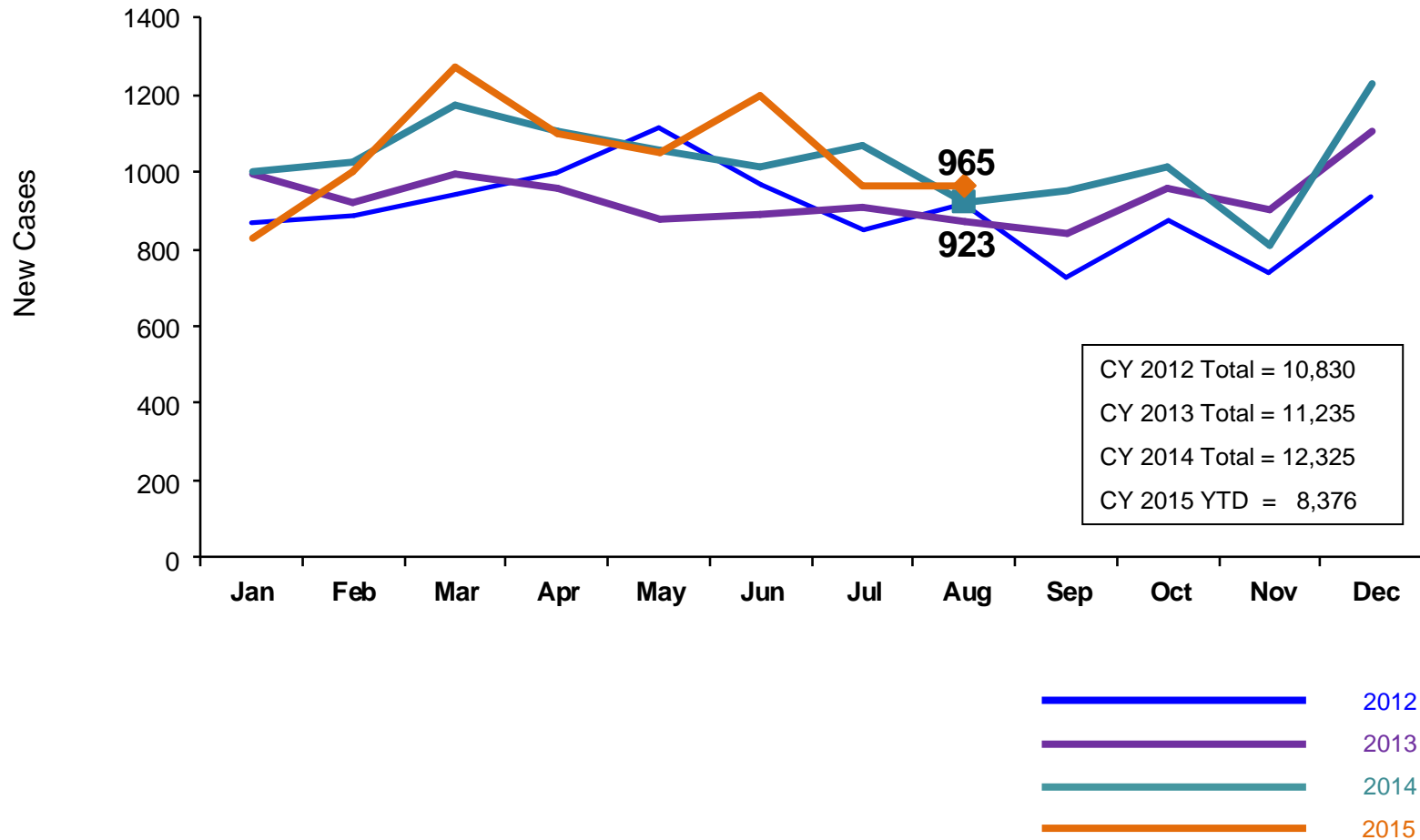
August 2014 – August 2015 (End of Month)

Converted EBM, Intensive Family and Specialized Teen



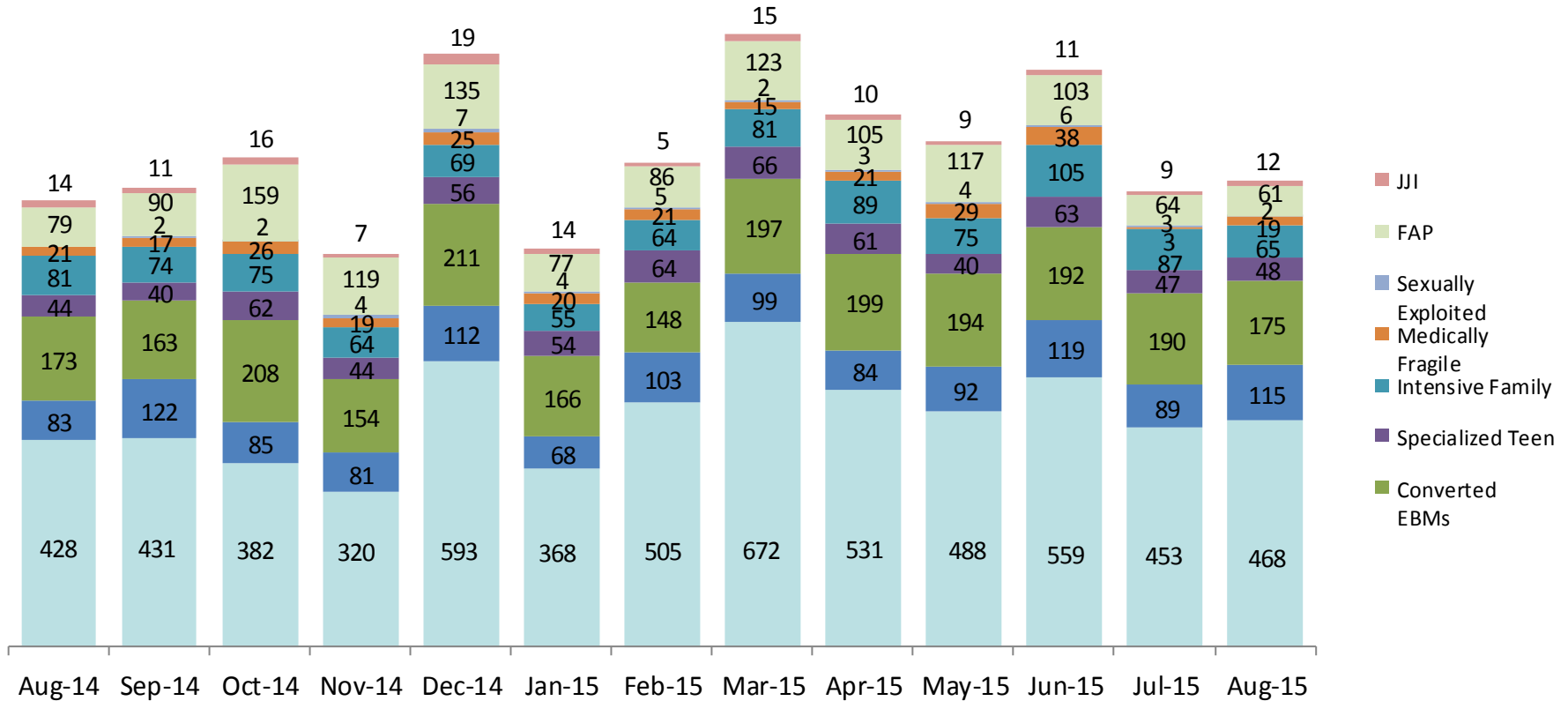
New Preventive Cases*

January 2012 – August 2015



*Notes: 1) New preventive cases do not include cases transferred from one preventive program to another. 2) See Pages 36 and 37 of the Appendix for supporting data.

New Preventive Cases* by Program Type August 2014 – August 2015

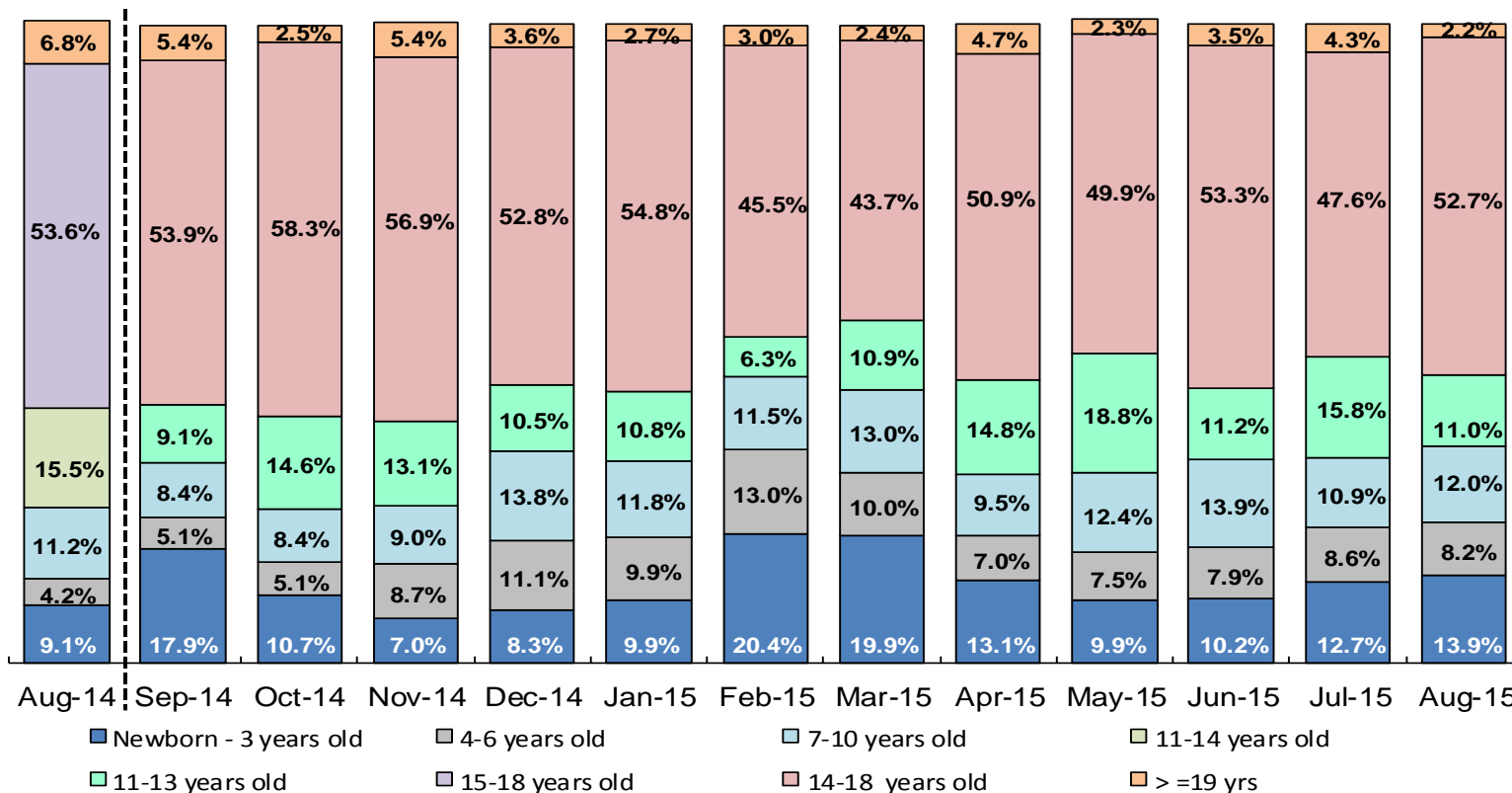


	Aug 2014	Sep 2014	Oct 2014	Nov 2014	Dec 2014	Jan 2015	Feb 2015	Mar 2015	Apr 2015	May 2015	Jun 2015	Jul 2015	Aug 2015
Number of New Preventive Cases	923	950	1,015	812	1,227	826	1,001	1,270	1,103	1,048	1,196	967	965

Note: New preventive cases do not include cases transferred from one preventive program to another.

Average Pre-Placement Residential Monthly Population

August 2014 – August 2015



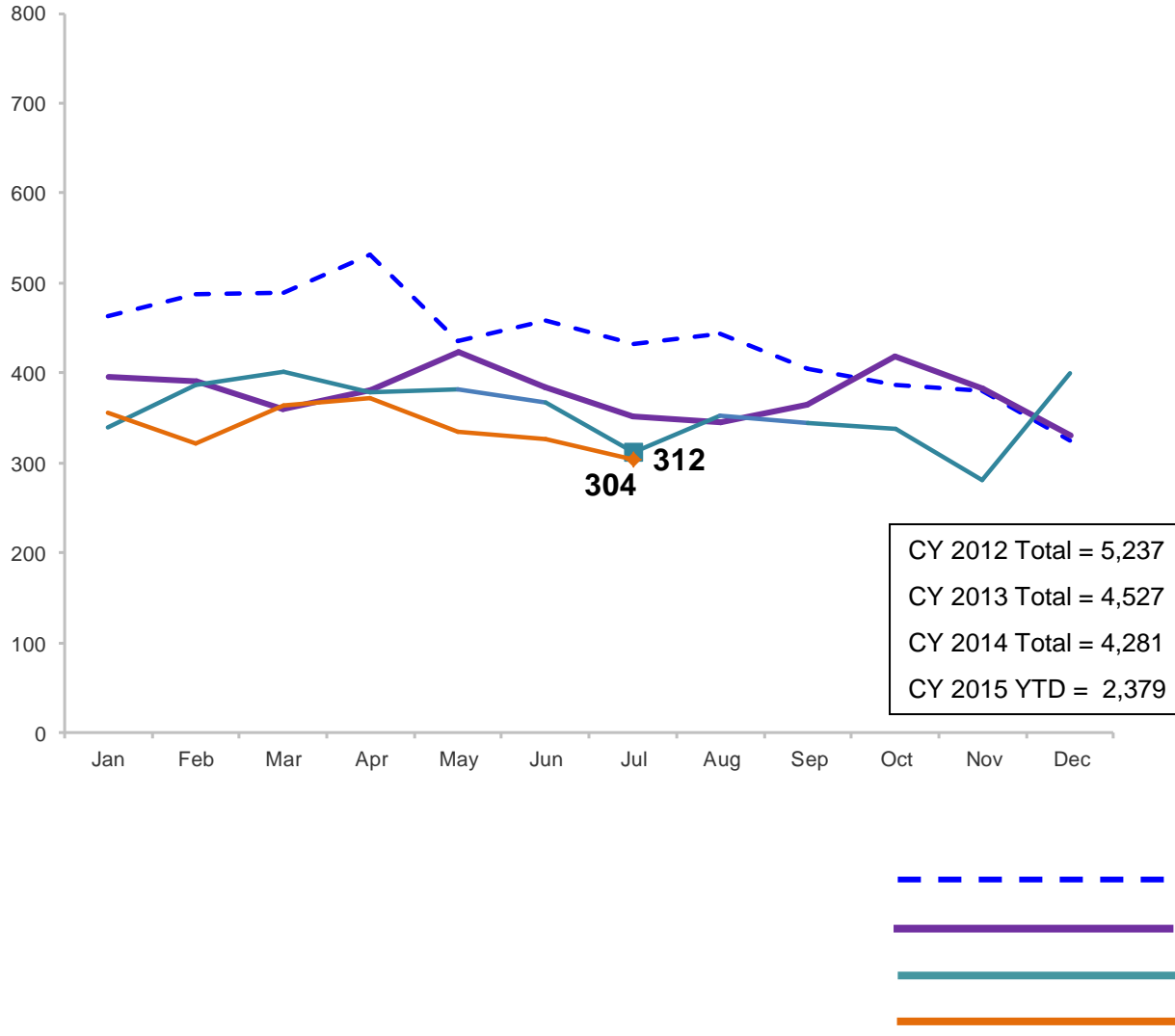
	Aug 2014	Sep 2014	Oct 2014	Nov 2014	Dec 2014	Jan 2015	Feb 2015	Mar 2015	Apr 2015	May 2015	Jun 2015	July 2015	Aug 2015
Average Number of Children	34	37	45	48	44	51	39	50	52	60	50	42	40

*Beginning in December 2014 the pre-placement residential population includes children at the Children’s Center and at the MercyFirst Reception Center.

*Beginning in September 2014, the age categories reported changed from 11-14 to 11-13 year olds and 15-18 to 14-18 year olds.

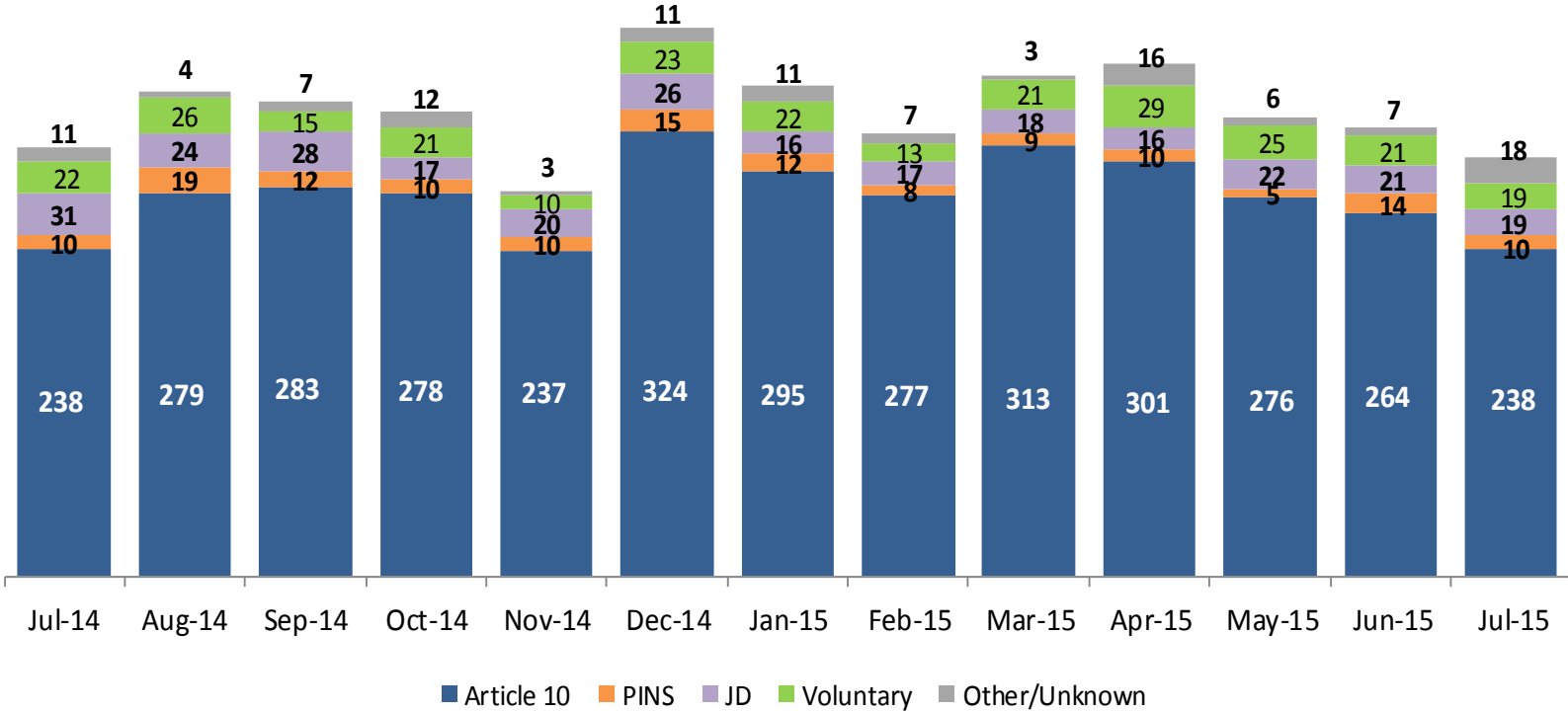
Total Monthly Placements

January 2012 – July 2015



Reason for Initial Placements into Foster Care

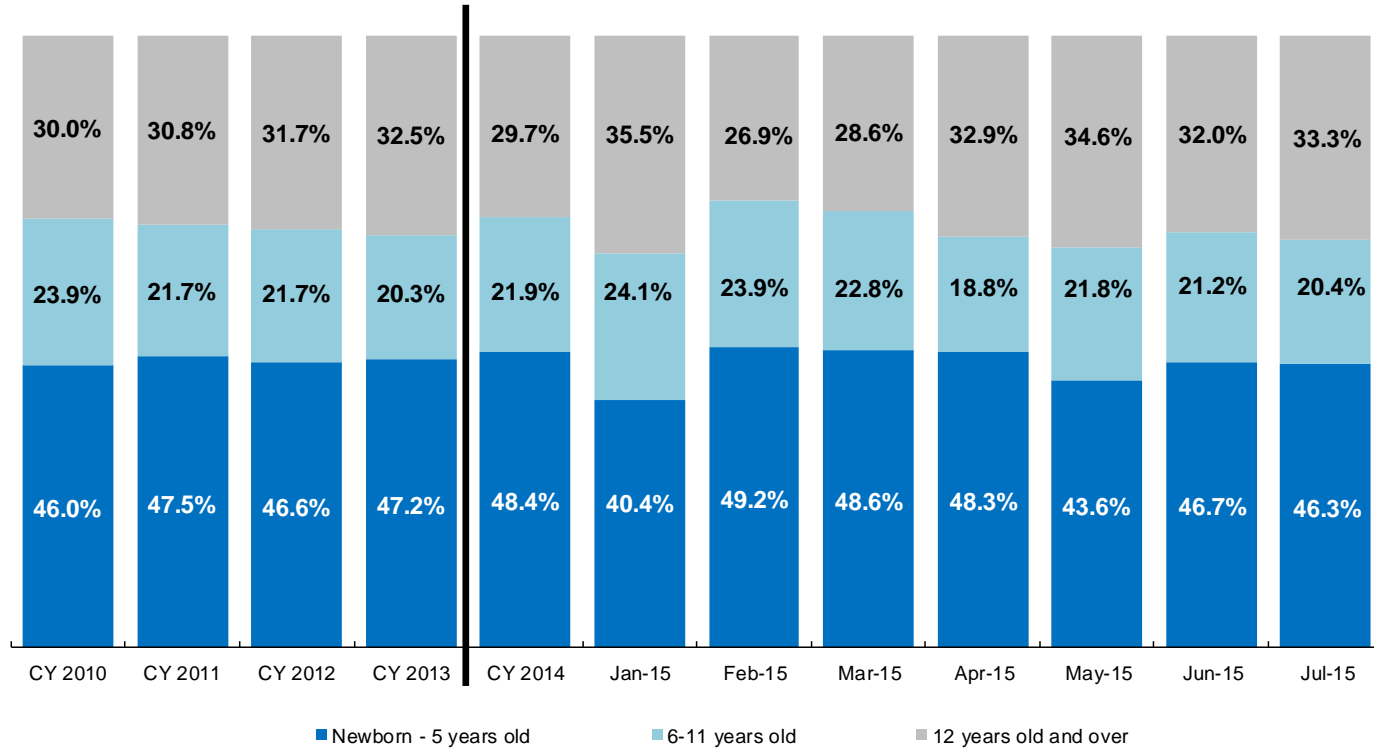
July 2014 – July 2015



	July 2014	Aug 2014	Sep 2014	Oct 2014	Nov 2014	Dec 2014	Jan 2015	Feb 2015	Mar 2015	Apr 2015	May 2015	Jun 2015	Jul 2015
Number of Placements	312	352	345	338	280	399	356	322	364	372	334	327	304

Placements* by Age

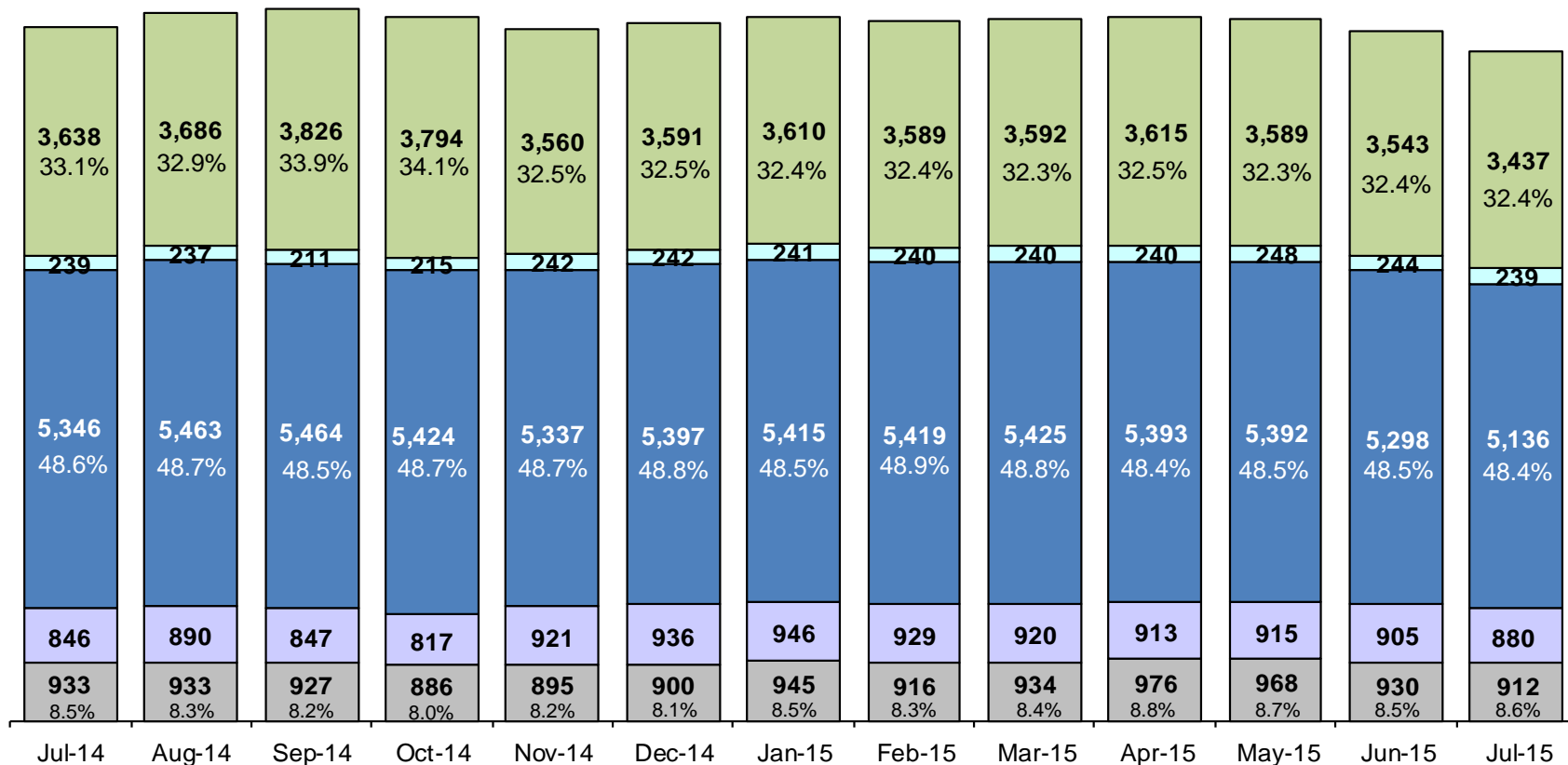
CY 2012 - July 2015



	CY 2012	CY 2013	CY 2014	Jan 2015	Feb 2015	Mar 2015	Apr 2015	May 2015	Jun 2015	Jul 2015
Placements (without JDs)	4,823	4,170	3,983	344	305	346	356	312	306	285

*Excludes JD placements.

Children in Foster Care* July 2014 – July 2015 (end of month)

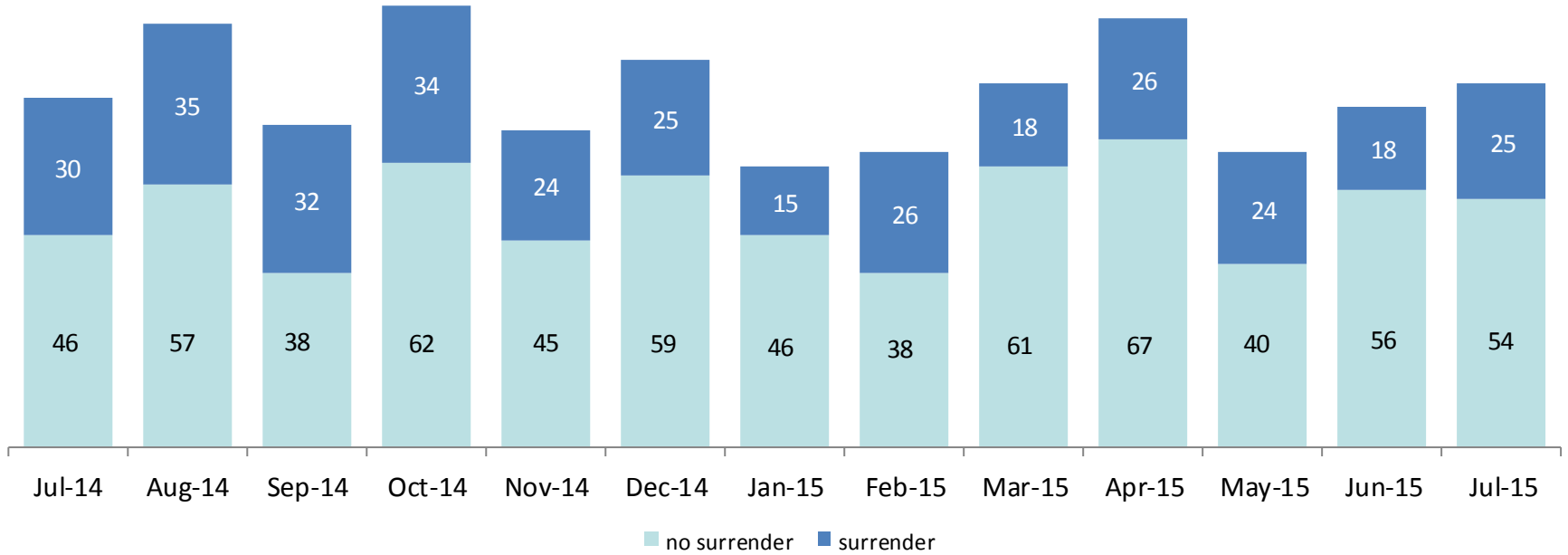


■ Residential
 ■ Treatment FFC
 ■ Regular FBH
 ■ Special Medical
 ■ Kinship

	Jul 2014	Aug 2014	Sep 2014	Oct 2014	Nov 2014	Dec 2014	Jan 2015	Feb 2015	Mar 2015	Apr 2015	May 2015	Jun 2015	Jul 2015
Number in Foster Care	11,002	11,209	11,275	11,136	10,955	11,066	11,157	11,093	11,111	11,137	11,112	10,920	10,604

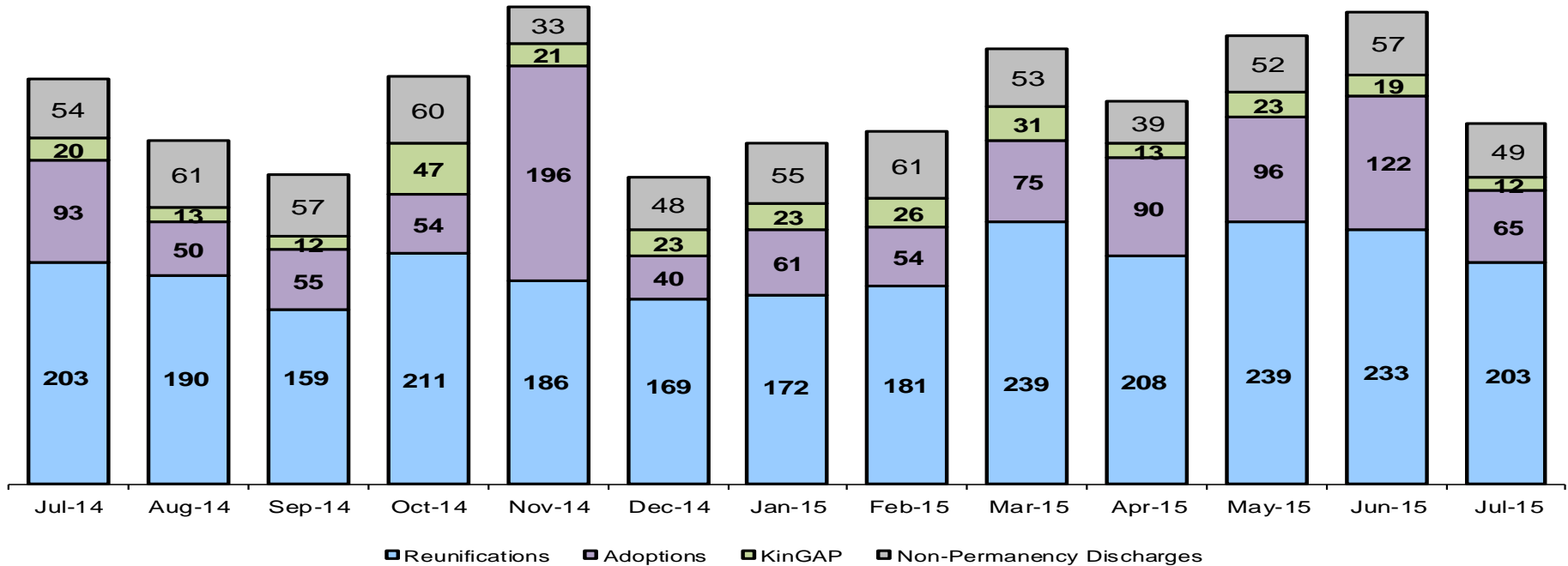
*Excludes JD placements and includes approximately 400 young children who are living in foster homes or residential care facilities with their mothers who are in foster care (8D children). 19

Children Freed for Adoption, Surrender by at Least One Parent July 2014 – July 2015



	Jul 2014	Aug 2014	Sep 2014	Oct 2014	Nov 2014	Dec 2014	Jan 2015	Feb 2015	Mar 2015	Apr 2015	May 2015	Jun 2015	Jul 2015
Number Freed for Adoption	76	92	70	96	69	84	61	64	79	93	64	74	79

Permanency and Non-Permanency* Discharges from Foster Care** July 2014 – July 2015

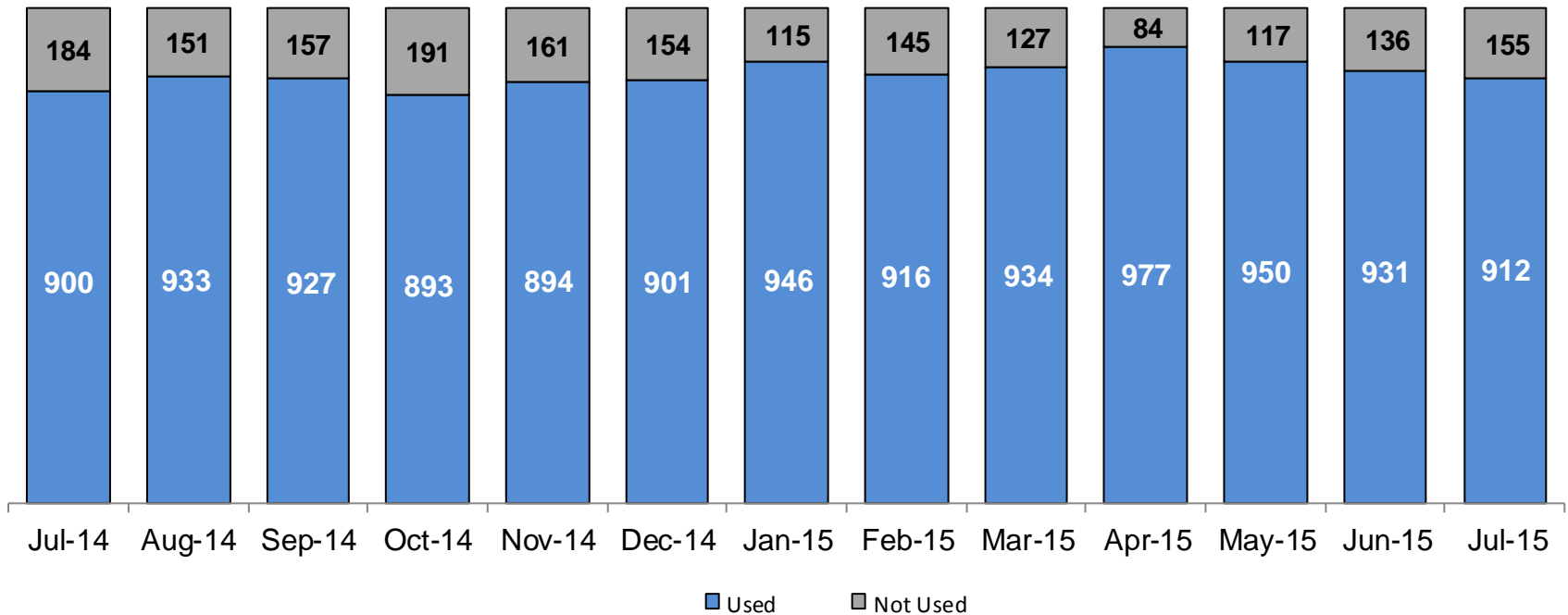


	Jul 2014	Aug 2014	Sep 2014	Oct 2014	Nov 2014	Dec 2014	Jan 2015	Feb 2015	Mar 2015	Apr 2015	May 2015	Jun 2015	Jul 2015
Number of Discharges	370	314	283	372	436	280	311	322	398	350	410	431	329

*Non-permanency discharges include AWOL, APPLA , other discharge destinations such as psychiatric institutions and correctional facilities and discharges with unspecified destinations.

**Excludes discharges of youth who entered care as a JD.

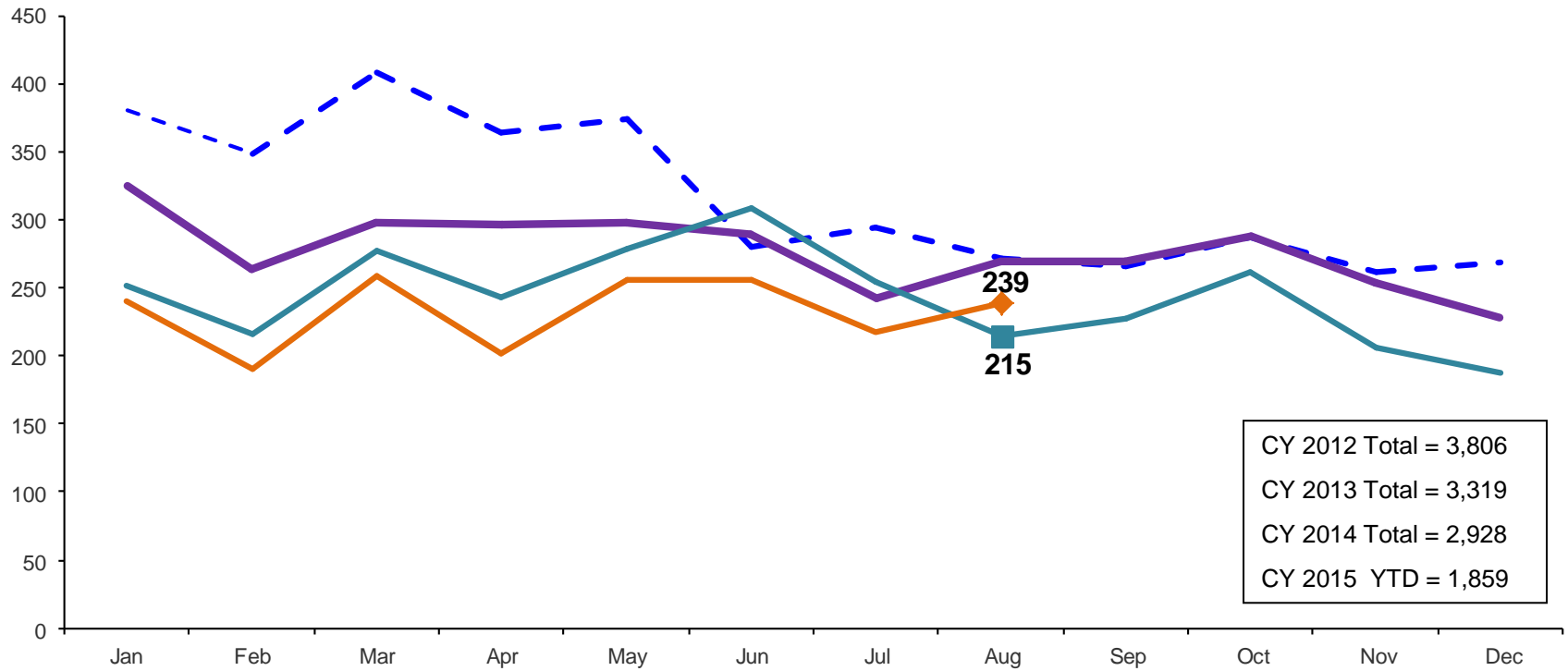
Residential Care Capacity and Utilization, July 2014 – July 2015



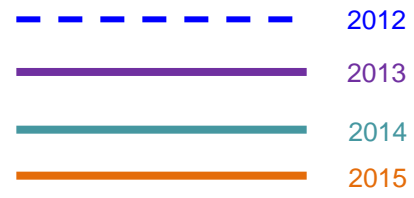
	Jul 2014	Aug 2014	Sep 2014	Oct 2014	Nov 2014	Dec 2014	Jan 2015	Feb 2015	Mar 2015	Apr 2015	May 2015	Jun 2015	Jul 2015
Capacity	1,084	1,084	1,084	1,084	1,055	1,055	1,061	1,061	1,061	1,061	1,067	1,067	1,067

Total Monthly Admissions to Detention

February 2012 – August 2015 (Monthly Total)

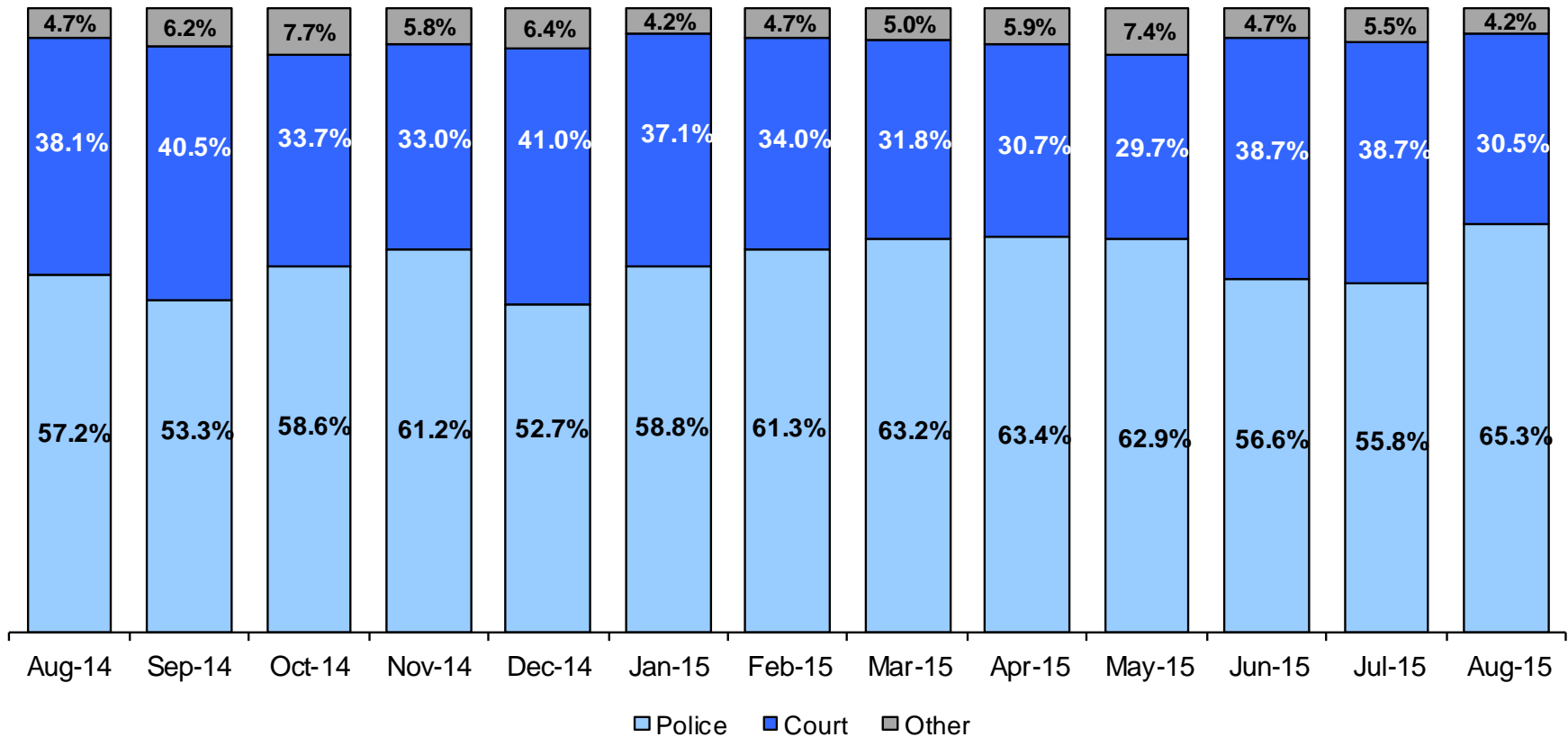


CY 2012 Total = 3,806
CY 2013 Total = 3,319
CY 2014 Total = 2,928
CY 2015 YTD = 1,859



Admit Authority on Admissions

August 2014 – August 2015 (Monthly Total)



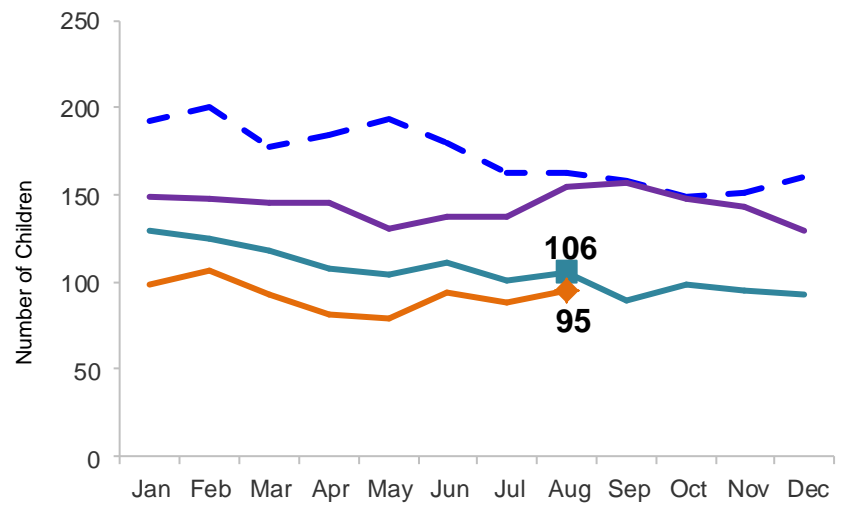
	Aug 2014	Sep 2014	Oct 2014	Nov 2014	Dec 2014	Jan 2015	Feb 2015	Mar 2015	Apr 2015	May 2015	Jun 2015	July 2015	Aug 2015
Number of Admissions	215	227	261	206	188	240	191	258	202	256	256	217	239

Note: Other Admit Authority includes the Sheriff Department, Department of Corrections and ACS.

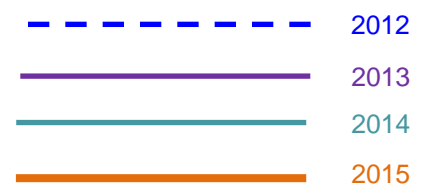
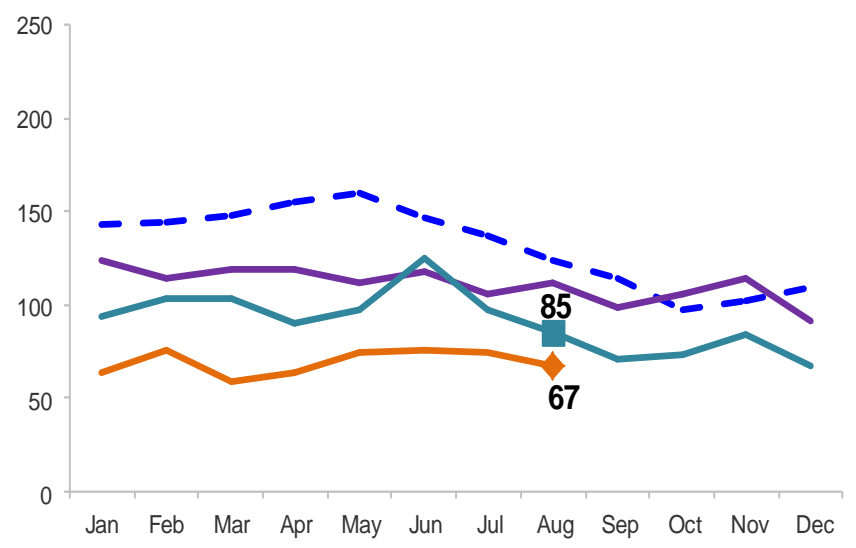
Monthly Average Daily Population

January 2012 – August 2015

Secure Detention

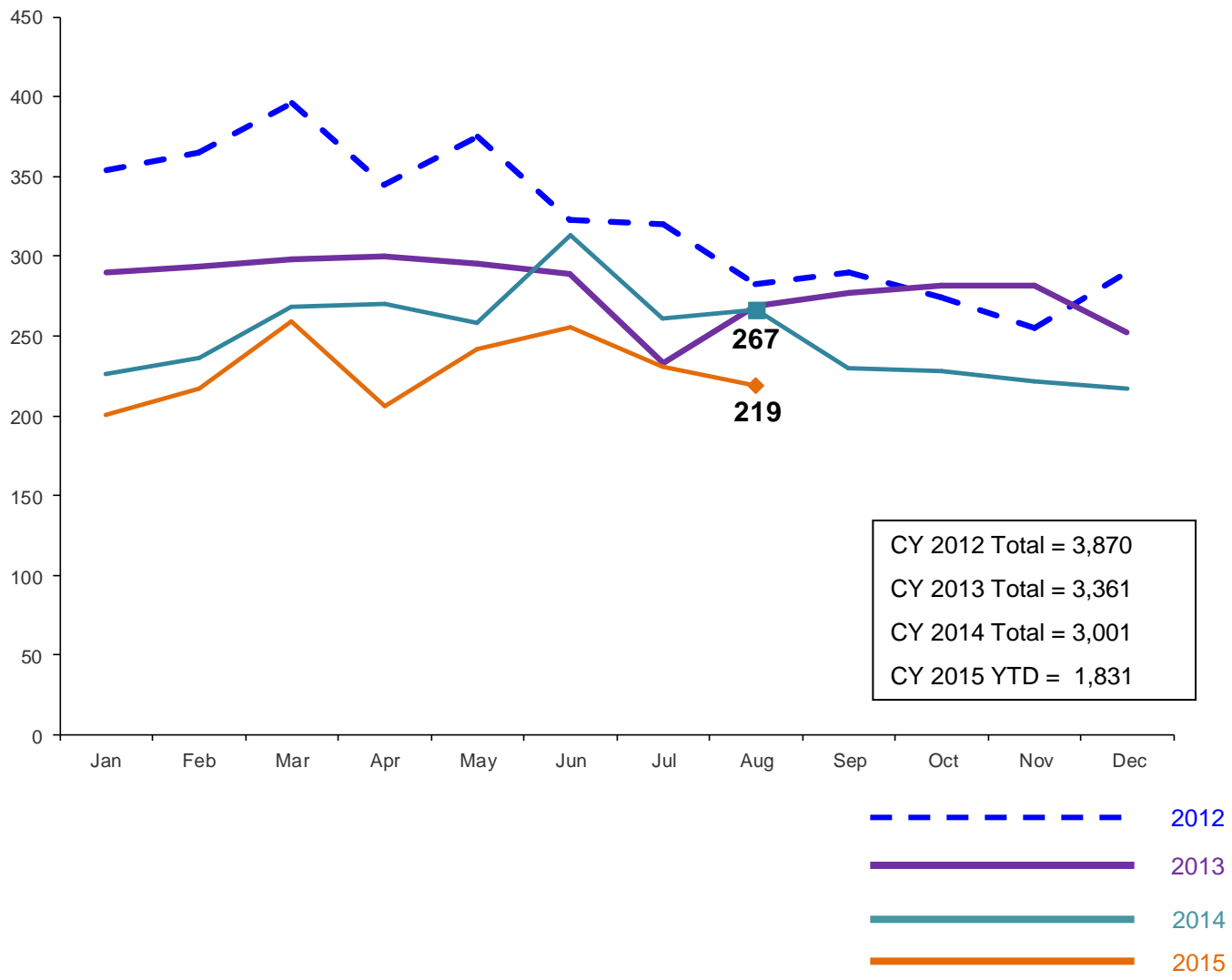


Non-Secure Detention



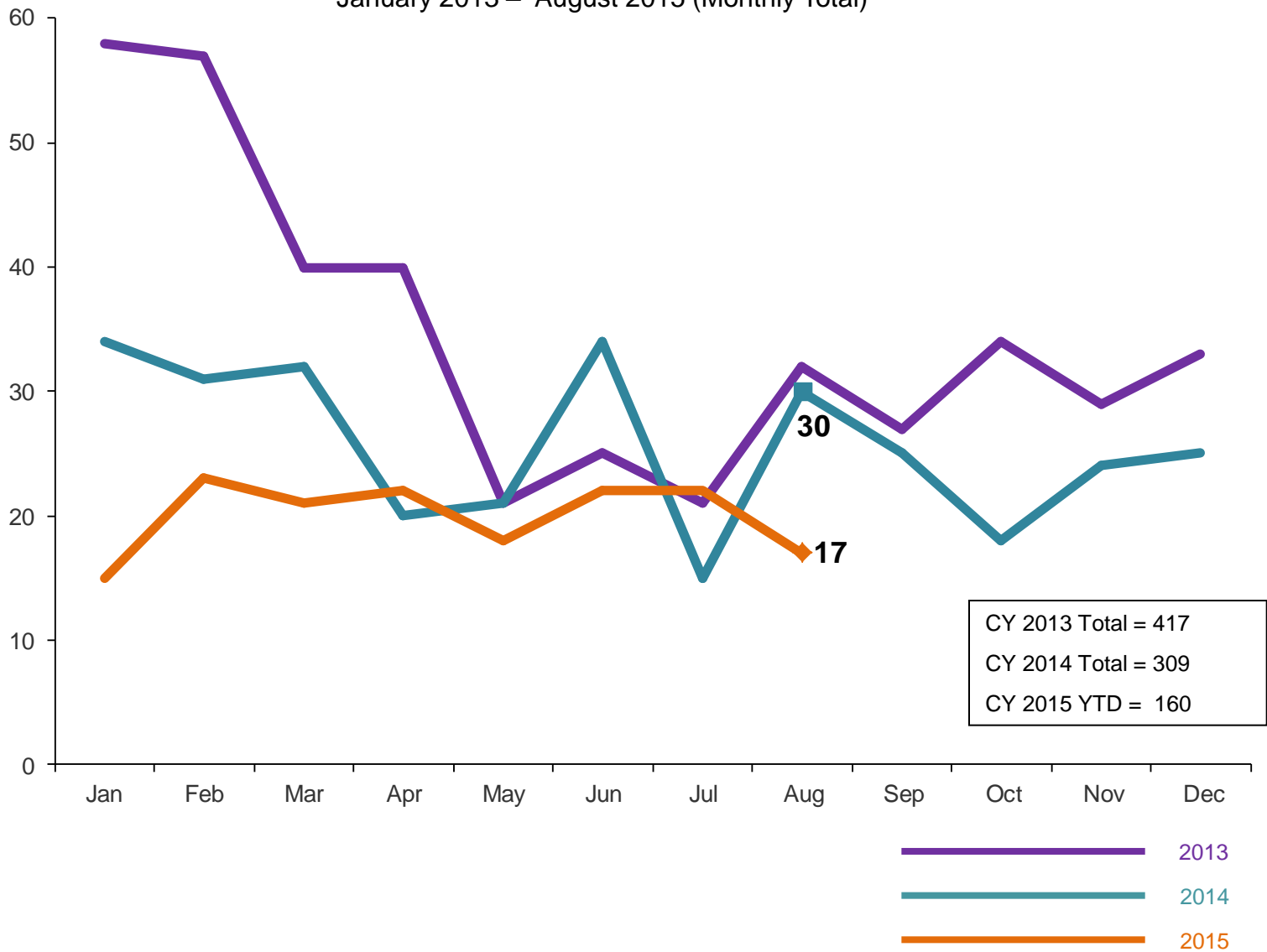
Total Monthly Releases from Detention

January 2012 – August 2015 (Monthly Total)



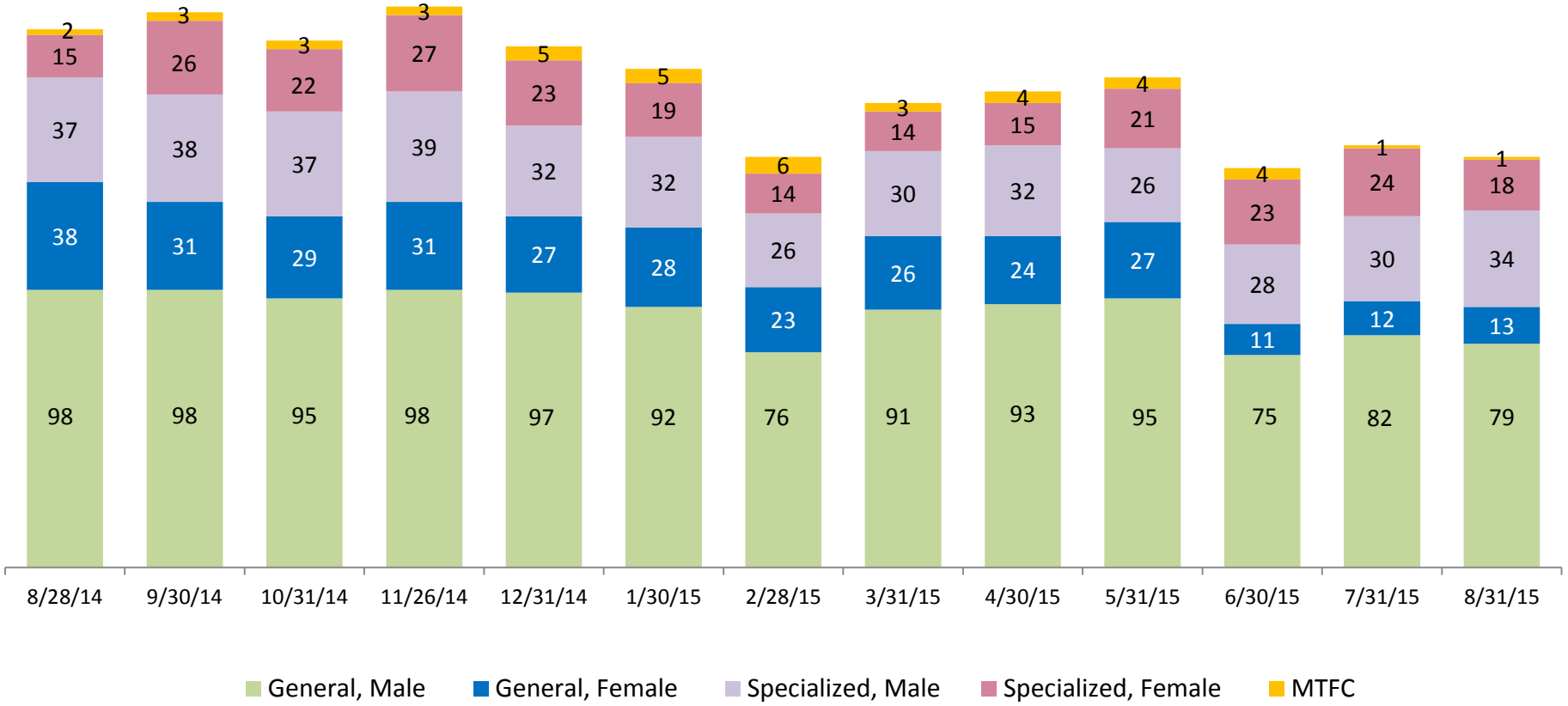
ACS NSP Intakes

January 2013 – August 2015 (Monthly Total)



ACS Non-Secure Placement, in 24 hour Care

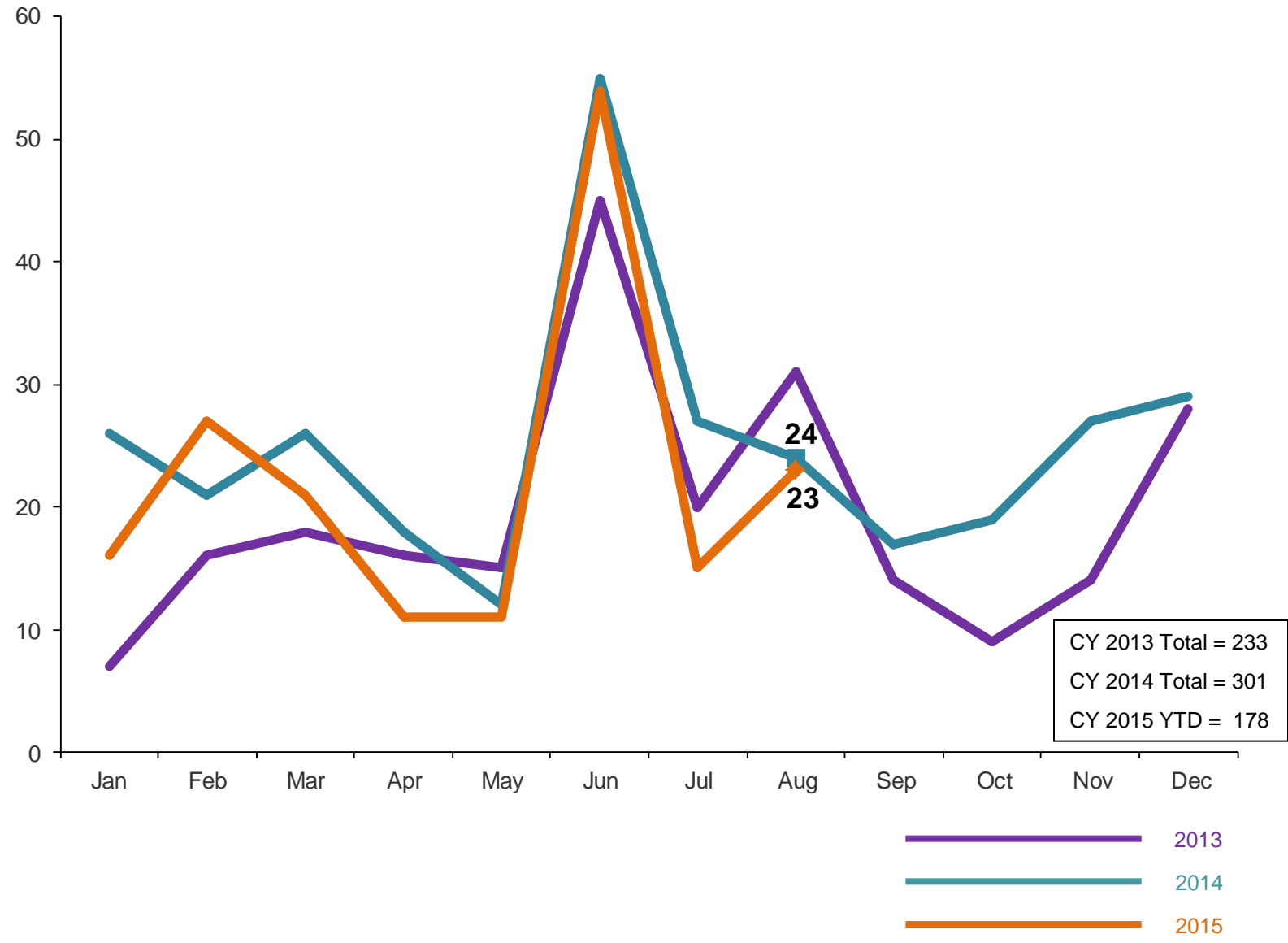
August 2014 – August 2015 (Point-in-Time)



	8/28/14	9/30/14	10/31/14	11/26/14	12/31/14	1/30/15	2/28/15	3/31/15	4/30/15	5/31/15	6/30/15	7/31/15	8/31/15
Number in Placement	190	196	186	198	184	176	145	164	168	173	141	149	145

Releases from NSP to Aftercare

January 2013 – August 2015 (Monthly Total)



Appendix

Figure 1: SCR Intakes by Borough, JUN 14 – AUG 14 and JUN 15 – AUG 15

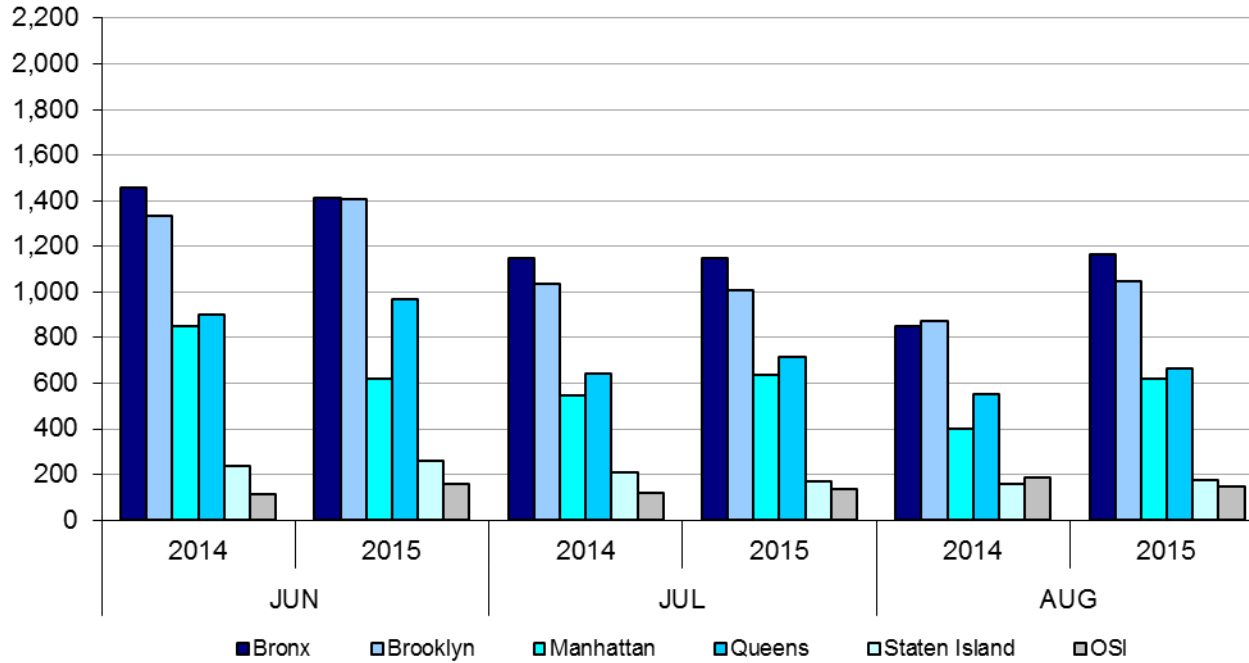


TABLE 1 - SCR Intake Changes by Borough, JUN 14 – AUG 14 and JUN 15 – AUG 15

Month	Year	Bronx	Brooklyn	Manhattan	Queens	Staten Island	OSI	Other	Total
JUN	2014	1,457	1,333	848	900	239	112	151	5,040
	2015	1,411	1,408	621	968	261	157	136	4,962
	% Change	-3.2%	5.6%	-26.8%	7.6%	9.2%	40.2%	-9.9%	-1.5%
JUL	2014	1,148	1,034	546	641	209	121	124	3,823
	2015	1,147	1,010	639	715	167	137	143	3,958
	% Change	-0.1%	-2.3%	17.0%	11.5%	-20.1%	13.2%	15.3%	3.5%
AUG	2014	852	873	398	552	158	185	91	3,109
	2015	1,164	1,048	620	662	175	146	124	3,939
	% Change	36.6%	20.0%	55.8%	19.9%	10.8%	-21.1%	36.3%	26.7%
Total	2014	3,457	3,240	1,792	2,093	606	418	366	11,972
	2015	3,722	3,466	1,880	2,345	603	440	403	12,859
	% Change	7.7%	7.0%	4.9%	12.0%	-0.5%	5.3%	10.1%	7.4%

Figure 2: Citywide SCR Intakes by Reporter Group, JUN 14 – AUG 14 and JUN 15 – AUG 15

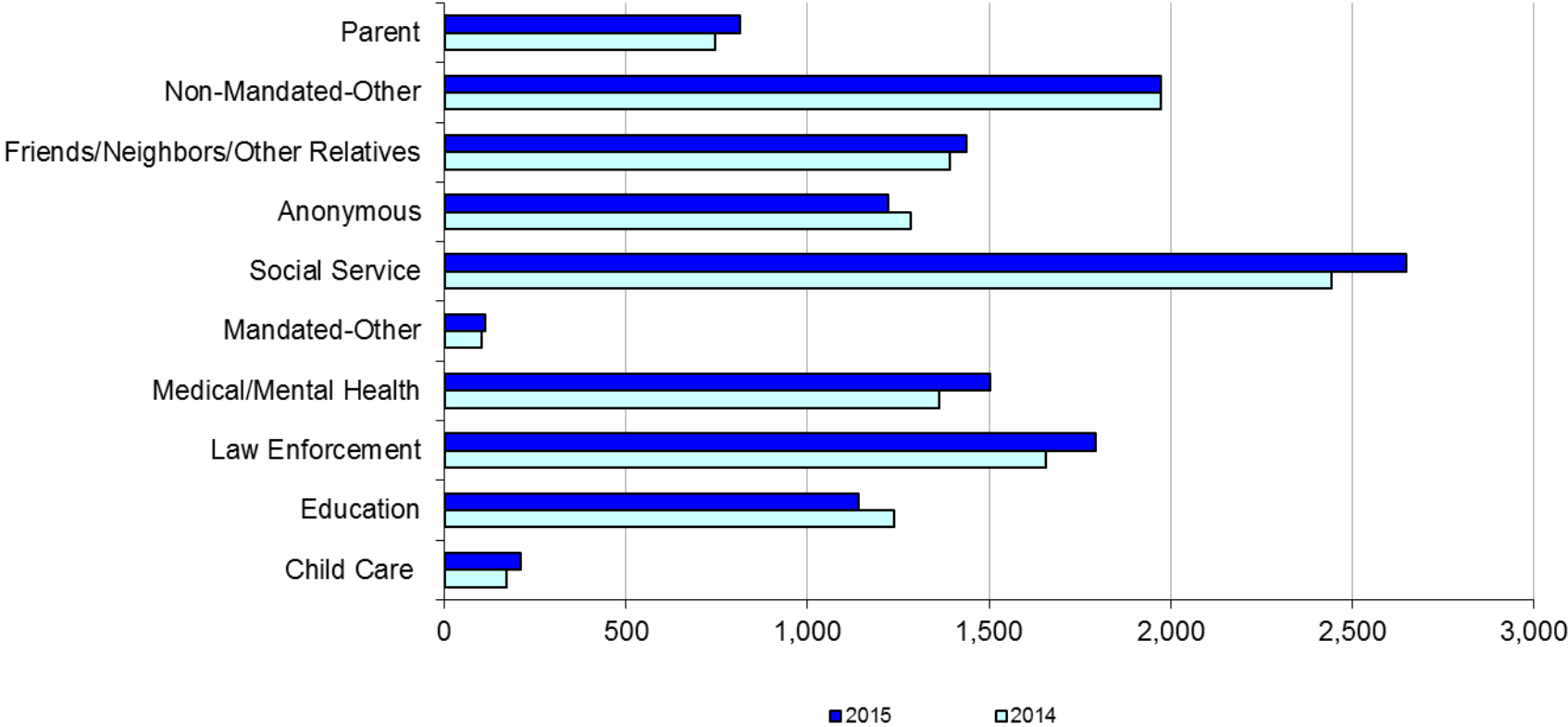
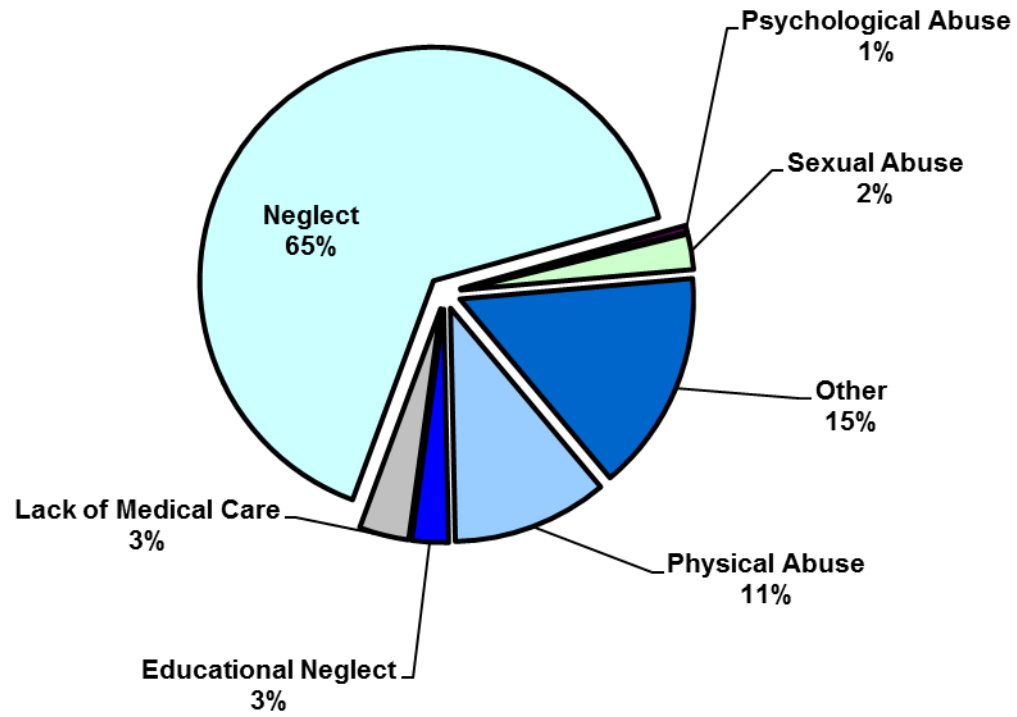


TABLE 2 - SCR Intakes by Reporter Group, JUN 14 – AUG 14 and JUN 15 – AUG 15

Year	Child Care/ Substitute Care Personnel	Educational Personnel	Law Enforcement	Medical/ Mental Health Personnel	Mandated- Other	Social Service Personnel	Anonymous	Friends/ Neighbors/ Other Relatives	Non- Mandated- Other	Parent	Foster Parent	Total
Bronx												
2014	44	396	370	422	30	726	375	412	618	185	1	3,579
2015	51	347	434	438	35	820	356	390	639	211	0	3,721
% Change	15.9%	-12.4%	17.3%	3.8%	16.7%	12.9%	-5.1%	-5.3%	3.4%	14.1%	--	4.0%
Brooklyn												
2014	34	322	479	358	20	630	374	377	583	201	1	3,379
2015	58	356	548	385	23	627	342	421	504	203	0	3,467
% Change	70.6%	10.6%	14.4%	7.5%	15.0%	-0.5%	-8.6%	11.7%	-13.6%	1.0%	--	2.6%
Manhattan												
2014	32	180	331	220	19	386	151	181	287	81	1	1,869
2015	28	108	318	224	15	410	182	178	324	92	1	1,880
% Change	-12.5%	-40.0%	-3.9%	1.8%	-21.1%	6.2%	20.5%	-1.7%	12.9%	13.6%	0.0%	0.6%
Queens												
2014	24	248	296	242	18	433	225	260	296	127	0	2,169
2015	27	253	315	281	21	510	213	272	304	148	0	2,344
% Change	12.5%	2.0%	6.4%	16.1%	16.7%	17.8%	-5.3%	4.6%	2.7%	16.5%	--	8.1%
Staten Island												
2014	7	68	72	42	6	96	114	103	77	39	1	625
2015	10	53	69	83	1	93	77	106	66	45	0	603
% Change	42.9%	-22.1%	-4.2%	97.6%	-83.3%	-3.1%	-32.5%	2.9%	-14.3%	15.4%	--	-3.5%
OSI												
2014	26	11	21	40	7	60	29	23	78	72	0	367
2015	29	17	25	44	9	63	39	32	103	75	3	439
% Change	11.5%	54.5%	19.0%	10.0%	28.6%	5.0%	34.5%	39.1%	32.1%	4.2%	--	19.6%
Other												
2014	5	13	86	37	1	113	17	37	35	41	0	385
2015	7	8	86	48	7	126	13	39	34	40	0	408
% Change	40.0%	-38.5%	0.0%	29.7%	600.0%	11.5%	-23.5%	5.4%	-2.9%	-2.4%	--	6.0%
Citywide												
2014	172	1,238	1,655	1,361	101	2,444	1,285	1,393	1,974	746	4	12,373
2015	210	1,142	1,795	1,503	111	2,649	1,222	1,438	1,974	814	4	12,862
% Change	22.1%	-7.8%	8.5%	10.4%	9.9%	8.4%	-4.9%	3.2%	0.0%	9.1%	0.0%	4.0%

Figure 3: SCR Allegations, JUN 15 – AUG 15



Total Allegations = 34,734

TABLE 3 - SCR Allegations, JUN 14 - AUG 14 and JUN 15 – AUG 15

Year	Physical Abuse	Educational Neglect	Lack of Medical Care	Neglect	Psychological Abuse	Sexual Abuse	Other	Total
Bronx								
2014	1,075	388	402	6,598	39	207	1,517	10,226
2015	1,116	321	399	7,091	49	247	1,564	10,787
% Change	3.8%	-17.3%	-0.7%	7.5%	25.6%	19.3%	3.1%	5.5%
Brooklyn								
2014	937	277	322	6,311	38	235	1,422	9,542
2015	1,087	277	311	6,226	33	249	1,446	9,629
% Change	16.0%	0.0%	-3.4%	-1.3%	-13.2%	6.0%	1.7%	0.9%
Manhattan								
2014	399	129	152	2480	27	87	532	3,806
2015	362	88	143	2366	19	87	535	3,600
% Change	-9.3%	-31.8%	-5.9%	-4.6%	-29.6%	0.0%	0.6%	-5.4%
Queens								
2014	634	128	188	3,588	34	119	836	5,527
2015	703	128	202	3,861	40	143	1,005	6,082
% Change	10.9%	0.0%	7.4%	7.6%	17.6%	20.2%	20.2%	10.0%
Staten Island								
2014	161	46	38	1,347	12	35	407	2,046
2015	131	36	45	1,188	9	39	397	1,845
% Change	-18.6%	-21.7%	18.4%	-11.8%	-25.0%	11.4%	-2.5%	-9.8%
OSI								
2014	244	16	52	1,140	8	43	152	1,655
2015	257	9	52	1,234	17	59	130	1,758
% Change	5.3%	-43.8%	0.0%	8.2%	112.5%	37.2%	-14.5%	6.2%
Other								
2014	100	16	32	521	4	23	188	884
2015	88	18	43	613	5	30	236	1,033
% Change	-12.0%	12.5%	34.4%	17.7%	25.0%	30.4%	25.5%	16.9%
Citywide								
2014	3,550	1,000	1,186	21,985	162	749	5,054	33,686
2015	3,744	877	1,195	22,579	172	854	5,313	34,734
% Change	5.5%	-12.3%	0.8%	2.7%	6.2%	14.0%	5.1%	3.1%

**TABLE 4 - Purchased Preventive Cases
Opened and Closed
January 2012 to July 2015**

Month	Opened Cases	Closed Cases
2012		
Jan-12	870	629
Feb-12	889	835
Mar-12	944	991
Apr-12	997	870
May-12	1,117	979
Jun-12	965	869
Jul-12	853	979
Aug-12	917	1,007
Sep-12	727	900
Oct-12	875	915
Nov-12	738	702
Dec-12	938	871
2013		
Jan-13	960	884
Feb-13	873	916
Mar-13	962	1,171
Apr-13	940	988
May-13	864	1,337
Jun-13	863	780
Jul-13	868	1,004
Aug-13	802	1,084
Sep-13	844	724
Oct-13	933	765
Nov-13	901	685
Dec-13	1,106	552
2014		
Jan-14	983	640
Feb-14	987	679
Mar-14	1,146	874
Apr-14	1,074	896
May-14	1,042	888
Jun-14	976	762
Jul-14	1,050	1,077
Aug-14	944	943
Sep-14	987	705
Oct-14	1,050	819
Nov-14	818	638
Dec-14	1,268	721
2015		
Jan-15	826	716
Feb-15	1,001	590
Mar-15	1,270	686
Apr-15	1,103	743
May-15	1,048	842
Jun-15	1,196	797
Jul-15	967	1,070

**Table 5 - Referrals to Purchased Preventive Services by Source
January 2012 to July 2015**

Month	Total Referrals	Division of Child Protection	Foster Care Agencies	PPRS Transfer	School	Self	Other Sources*
2012							
Jan-12	1,431	66.5%	0.7%	8.5%	3.6%	3.8%	17.0%
Feb-12	1,043	78.2%	1.1%	9.0%	1.9%	6.7%	3.1%
Mar-12	1,525	73.6%	0.9%	6.0%	1.8%	3.9%	13.8%
Apr-12	1,370	72.8%	1.0%	9.4%	1.2%	4.2%	11.4%
May-12	1,463	70.9%	1.0%	7.6%	1.1%	4.4%	15.0%
Jun-12	1,279	73.8%	0.5%	5.9%	1.0%	4.7%	14.2%
Jul-12	1,308	77.4%	1.2%	7.0%	0.3%	3.7%	10.5%
Aug-12	1,391	74.0%	0.9%	11.7%	0.3%	2.9%	10.2%
Sep-12	1,110	70.5%	1.9%	9.6%	1.2%	5.0%	11.9%
Oct-12	1,159	61.1%	1.4%	12.6%	2.7%	4.9%	17.3%
Nov-12	1,106	67.0%	1.0%	9.9%	2.2%	4.7%	15.3%
Dec-12	1,206	68.7%	0.8%	5.8%	2.7%	5.6%	16.4%
CY 2012	15,391	71.3%	1.0%	8.5%	1.6%	4.5%	13.1%
2013							
Jan-13	1,474	74.1%	1.2%	7.3%	1.2%	3.7%	12.5%
Feb-13	1,308	75.8%	1.1%	8.0%	1.6%	2.9%	10.6%
Mar-13	1,270	73.5%	1.2%	6.7%	2.4%	3.9%	12.3%
Apr-13	1,421	77.9%	0.8%	7.4%	0.9%	3.0%	10.1%
May-13	1,320	68.4%	0.5%	10.2%	1.5%	3.8%	15.5%
Jun-13	953	69.2%	1.2%	9.4%	2.6%	5.0%	12.6%
Jul-13	1,014	66.3%	1.9%	14.4%	1.6%	3.9%	11.9%
Aug-13	1,212	70.5%	0.7%	11.8%	0.7%	4.7%	11.6%
Sep-13	1,262	64.0%	2.1%	11.3%	1.7%	6.7%	14.2%
Oct-13	1,319	61.0%	1.1%	9.0%	2.9%	7.5%	18.5%
Nov-13	1,249	55.9%	1.6%	10.5%	4.6%	9.2%	18.3%
Dec-13	1,464	62.2%	1.2%	8.2%	2.3%	9.2%	17.0%
CY 2013	15,266	68.3%	1.2%	9.4%	2.0%	5.3%	13.8%
2014							
Jan-14	1,537	70.0%	1.2%	6.6%	2.3%	5.8%	14.2%
Feb-14	1,334	69.7%	0.8%	8.4%	1.7%	5.5%	13.9%
Mar-14	1,612	70.0%	1.4%	8.6%	1.6%	5.3%	13.1%
Apr-14	1,525	70.2%	0.9%	7.6%	2.1%	3.7%	15.4%
May-14	1,580	74.4%	0.7%	8.3%	1.4%	5.2%	10.0%
Jun-14	1,550	78.6%	1.2%	6.3%	1.2%	3.2%	9.4%
Jul-14	1,659	79.6%	1.5%	6.7%	0.4%	4.2%	7.6%
Aug-14	1,395	72.2%	1.6%	10.8%	0.3%	4.9%	10.3%
Sep-14	1,597	49.4%	1.5%	7.6%	0.3%	4.5%	36.8%
Oct-14	1,634	68.2%	1.9%	10.0%	1.2%	4.6%	14.1%
Nov-14	1,311	66.4%	0.9%	14.3%	2.4%	3.9%	12.1%
Dec-14	1,785	71.1%	1.4%	8.8%	2.9%	4.8%	11.0%
CY 2014	18,519	70.1%	1.3%	8.6%	1.5%	4.6%	14.0%
2015							
Jan-15	1,430	74.4%	1.6%	8.7%	1.8%	3.8%	9.7%
Feb-15	1,538	76.5%	0.8%	8.1%	1.8%	4.7%	8.2%
Mar-15	1,798	74.6%	0.9%	7.3%	1.6%	4.8%	10.8%
Apr-15	1,719	78.2%	1.3%	7.2%	0.6%	3.5%	9.1%
May-15	1,561	77.2%	1.0%	5.1%	1.5%	4.5%	10.8%
Jun-15	1,716	77.4%	1.1%	7.7%	1.2%	3.5%	9.1%
Jul-15	1,511	79.6%	0.9%	7.2%	0.3%	3.8%	8.2%

*Other Community Sources includes the Department of Homeless Services, Family Court, FAP, Hospitals and Medical facilities, the NYC Housing Authority, PINS/DAS, Probation, and Sponsor Agencies.