

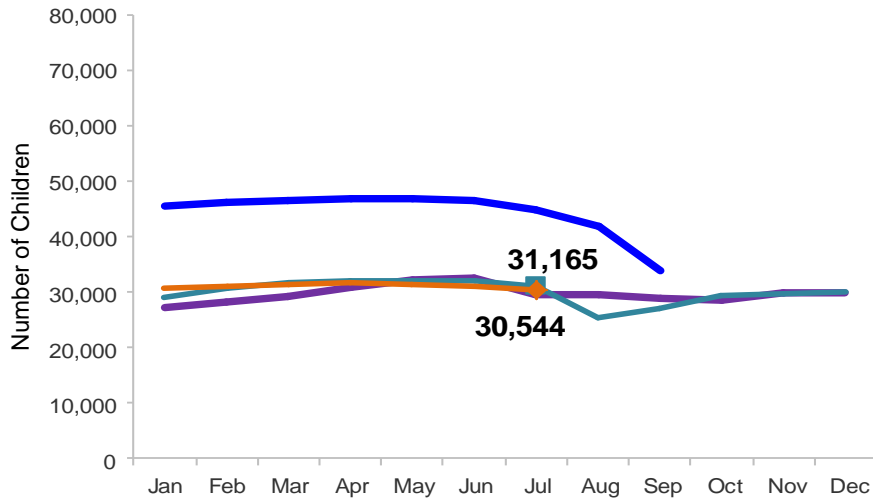


# Flash

August 2015

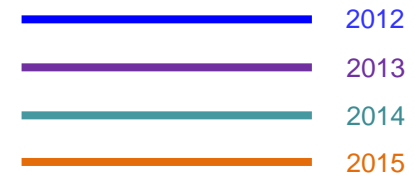
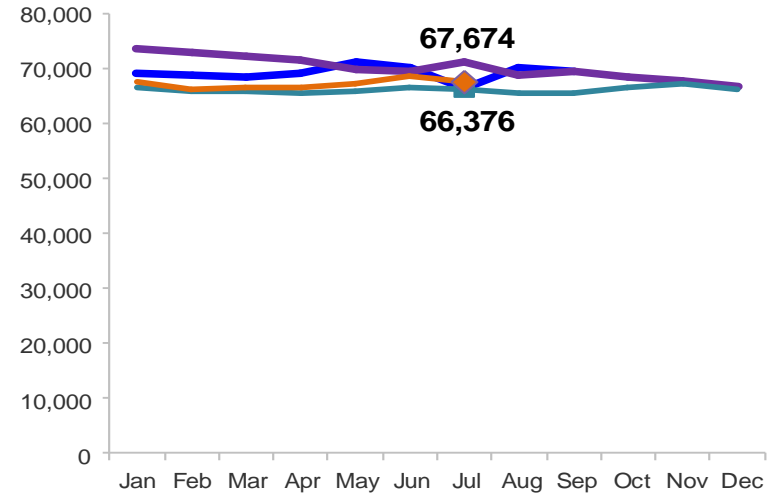
## Children Enrolled in Contracted EarlyLearn Programs

January 2012 – July 2015 (End of Month)



## Children Using Vouchers for Child Care

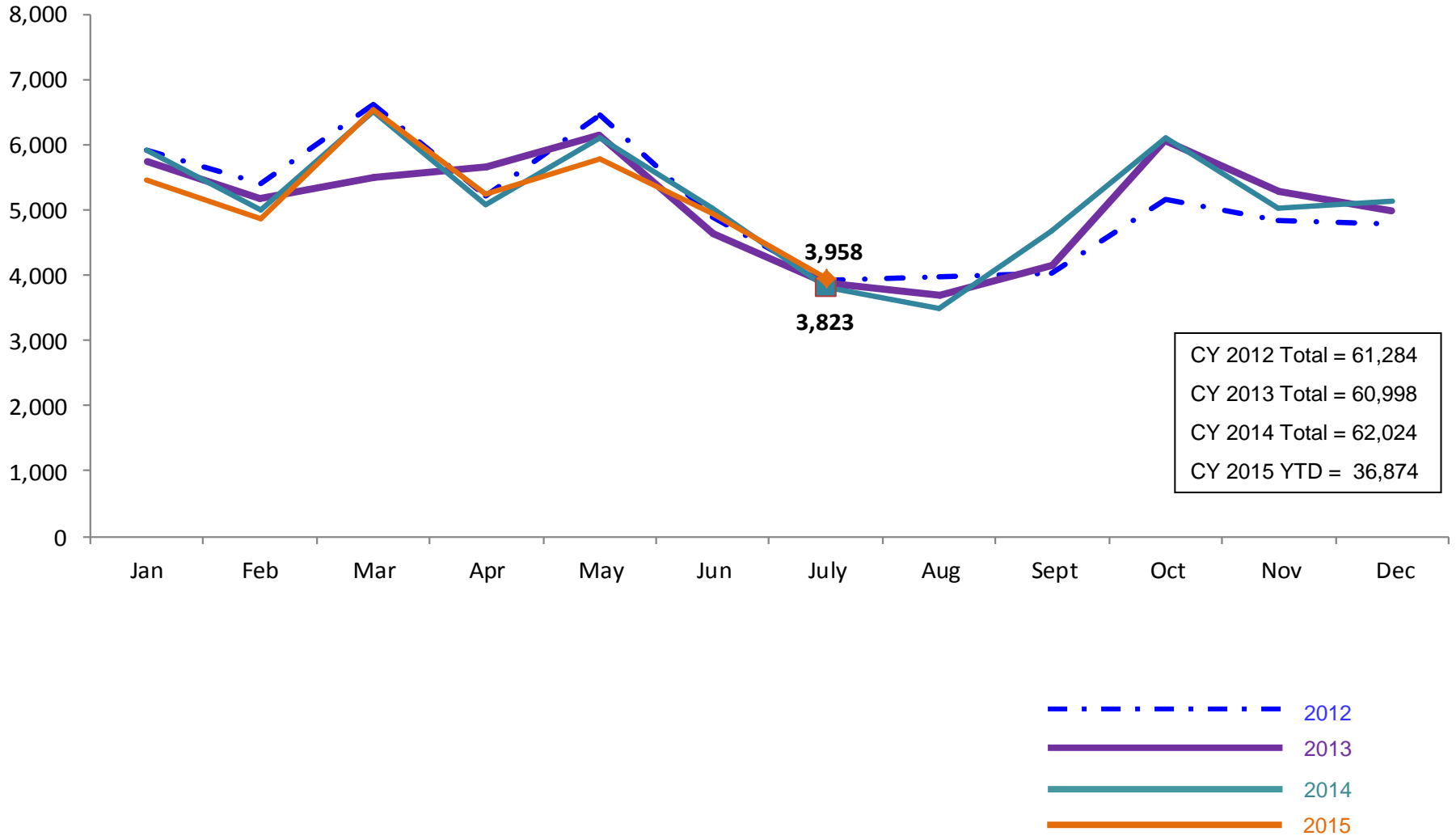
January 2012 – July 2015 (End of Month)



Note: Beginning October 1, 2012 ACS converted its early care and education system to a new model, EarlyLearn NYC. Enrollment data for the transitional months of October – December 2012 are not available because contractors were in the midst of implementing the data collection systems.

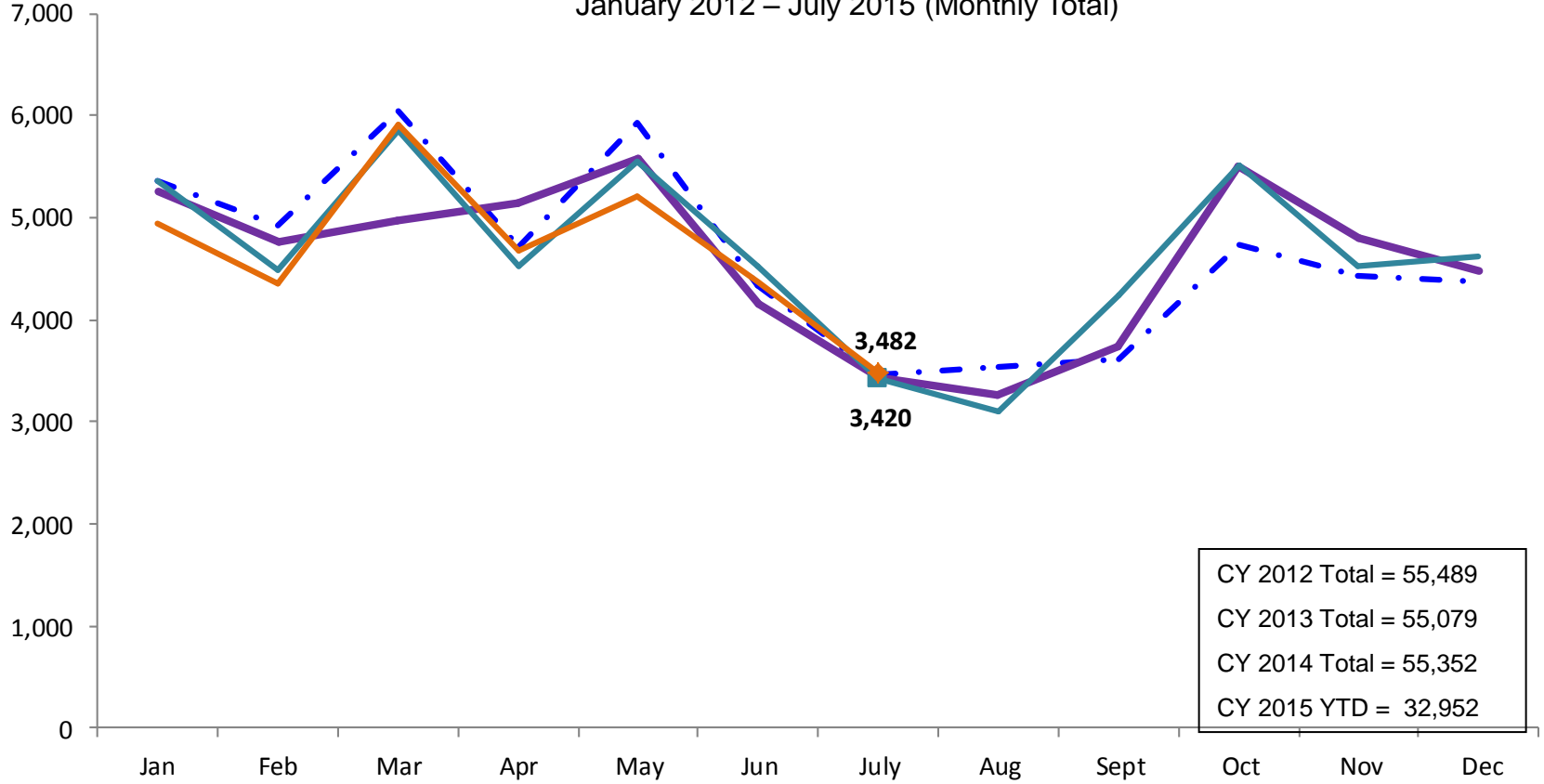
### SCR Intakes

January 2012 – July 2015 (Monthly Total)

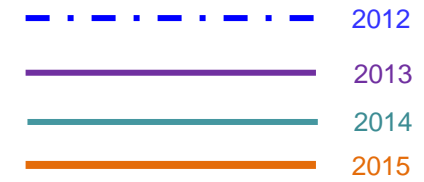


### SCR Consolidated Investigations

January 2012 – July 2015 (Monthly Total)

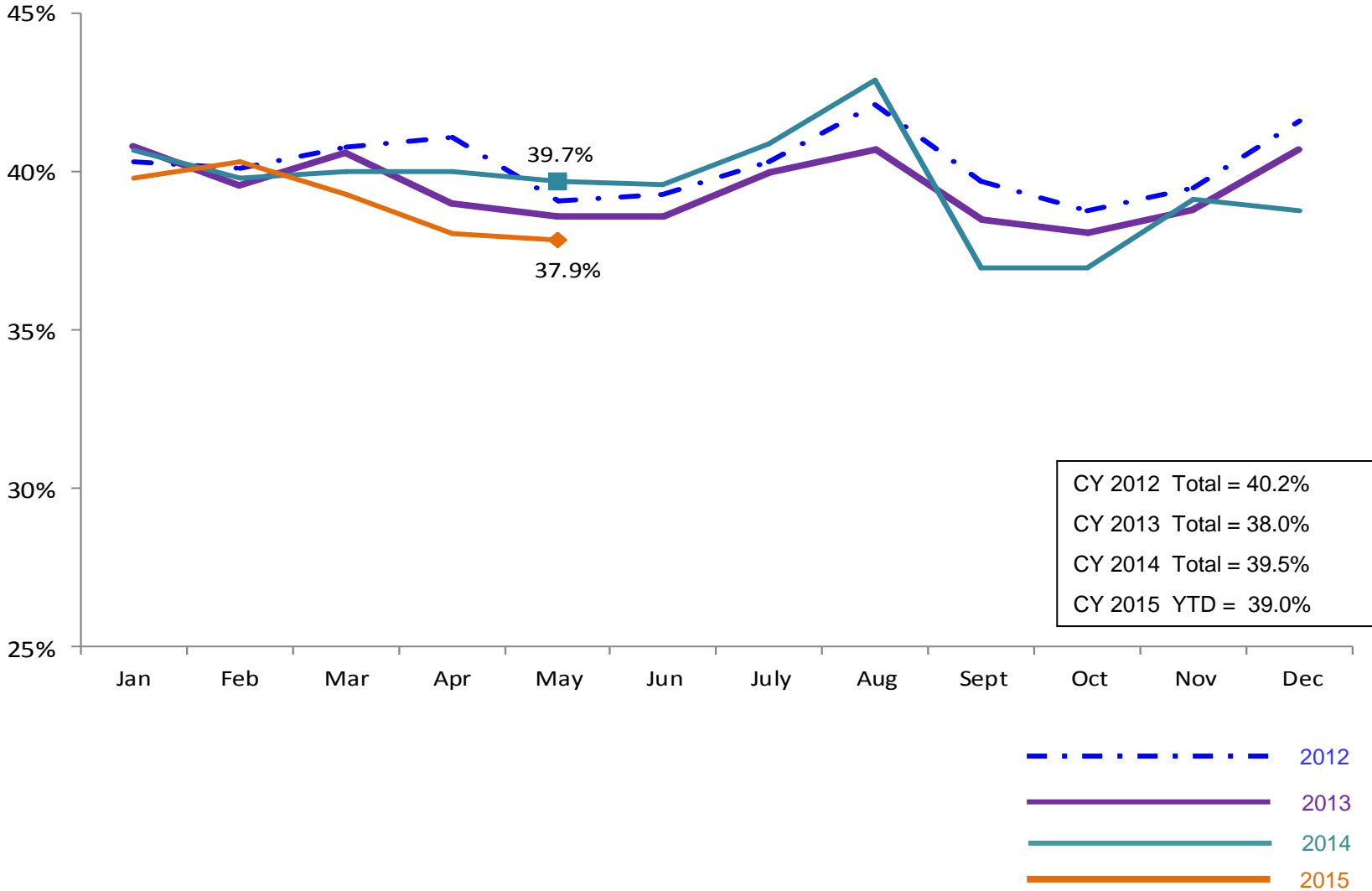


CY 2012 Total = 55,489  
CY 2013 Total = 55,079  
CY 2014 Total = 55,352  
CY 2015 YTD = 32,952



### SCR Investigation Indication Rate

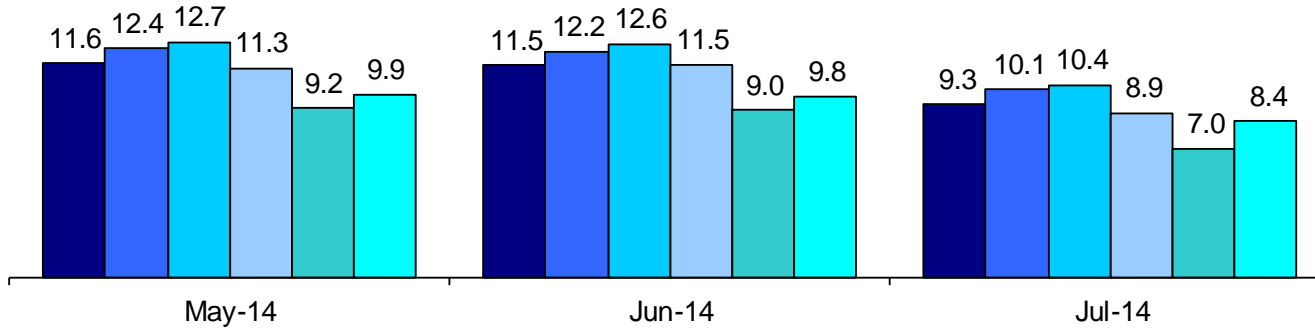
January 2012 – April 2015



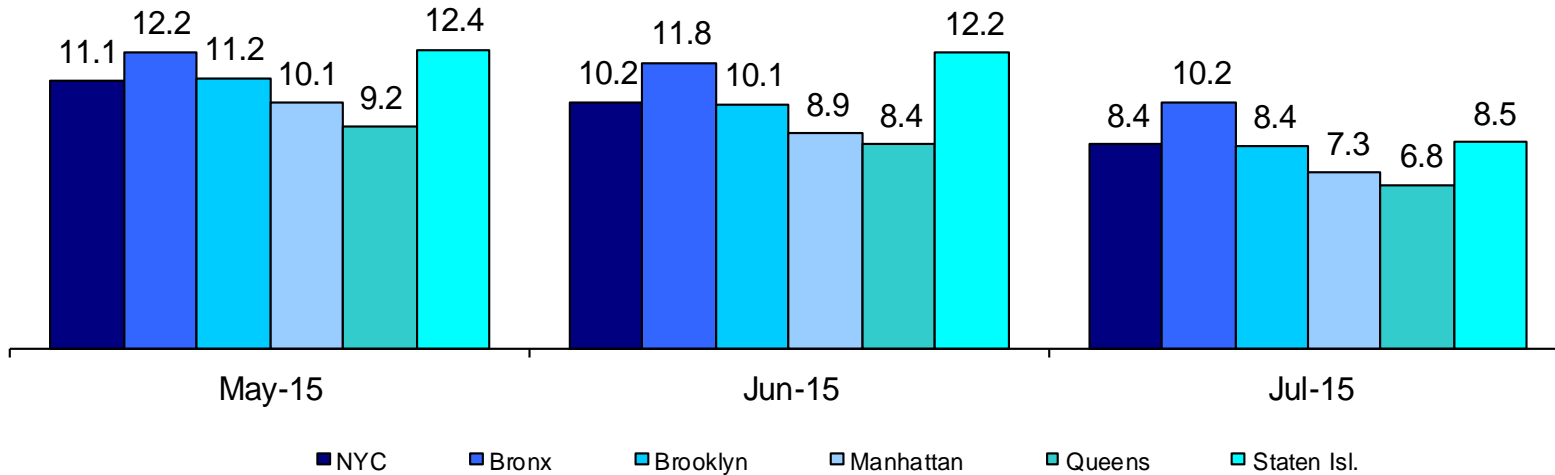
### Average P/D Combined Caseload\*

May 2014 – July 2014 & May 2015 – July 2015

2014



2015

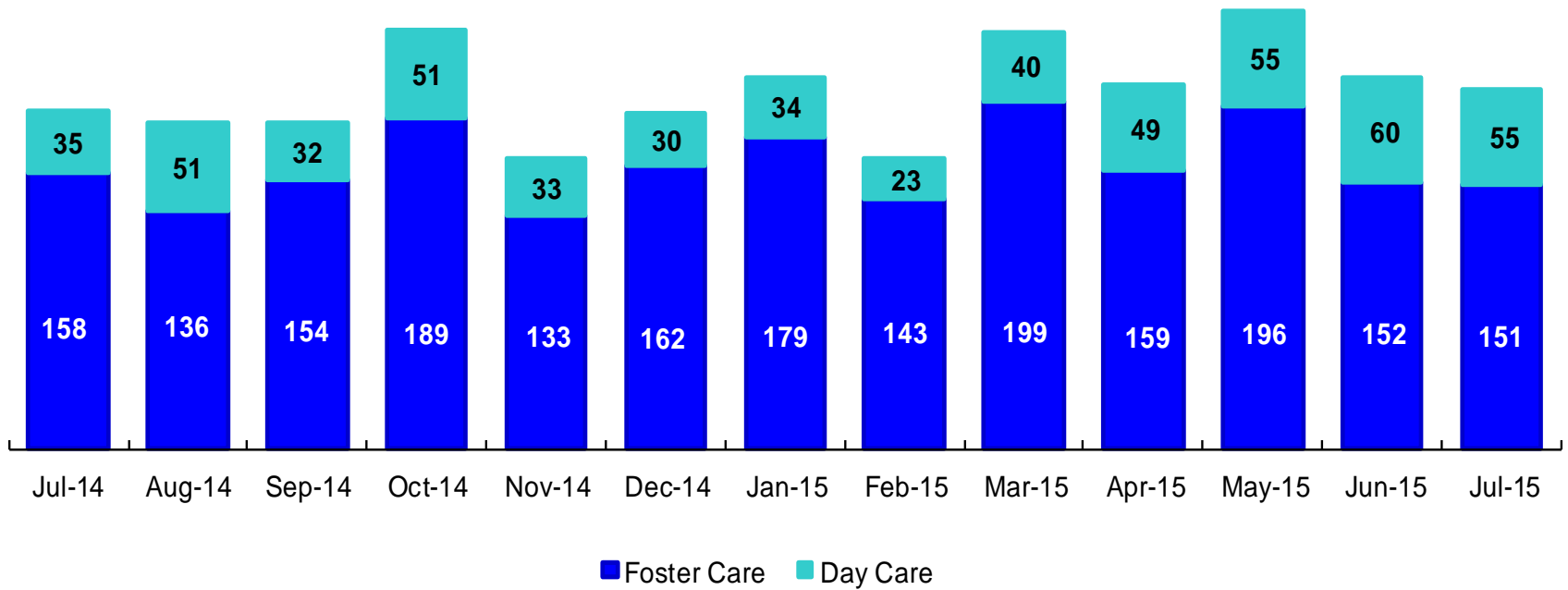


■ NYC   ■ Bronx   ■ Brooklyn   ■ Manhattan   ■ Queens   ■ Staten Isl.

\* Caseloads are of protective/diagnostic caseworkers only and exclude the caseloads carried by Level I and Level II Supervisors.

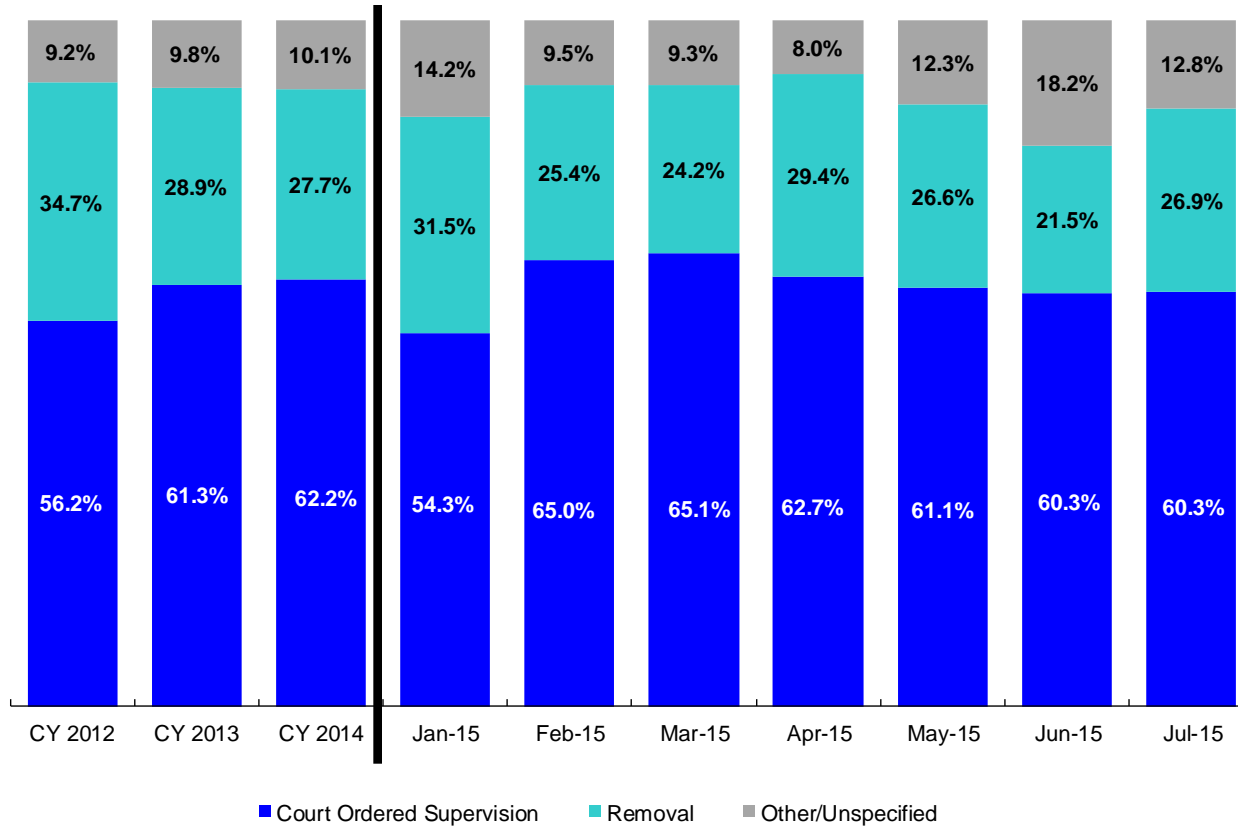
### OSI Investigations by Program

July 2014 – July 2015



	July 2014	Aug 2014	Sep 2014	Oct 2014	Nov 2014	Dec 2014	Jan 2015	Feb 2015	Mar 2015	Apr 2015	May 2015	Jun 2015	July 2015
Number of Investigations	193	187	186	240	166	192	213	166	239	208	251	212	206

### Article 10 Total Filings & Filing Outcomes, CY 2012 – July 2015

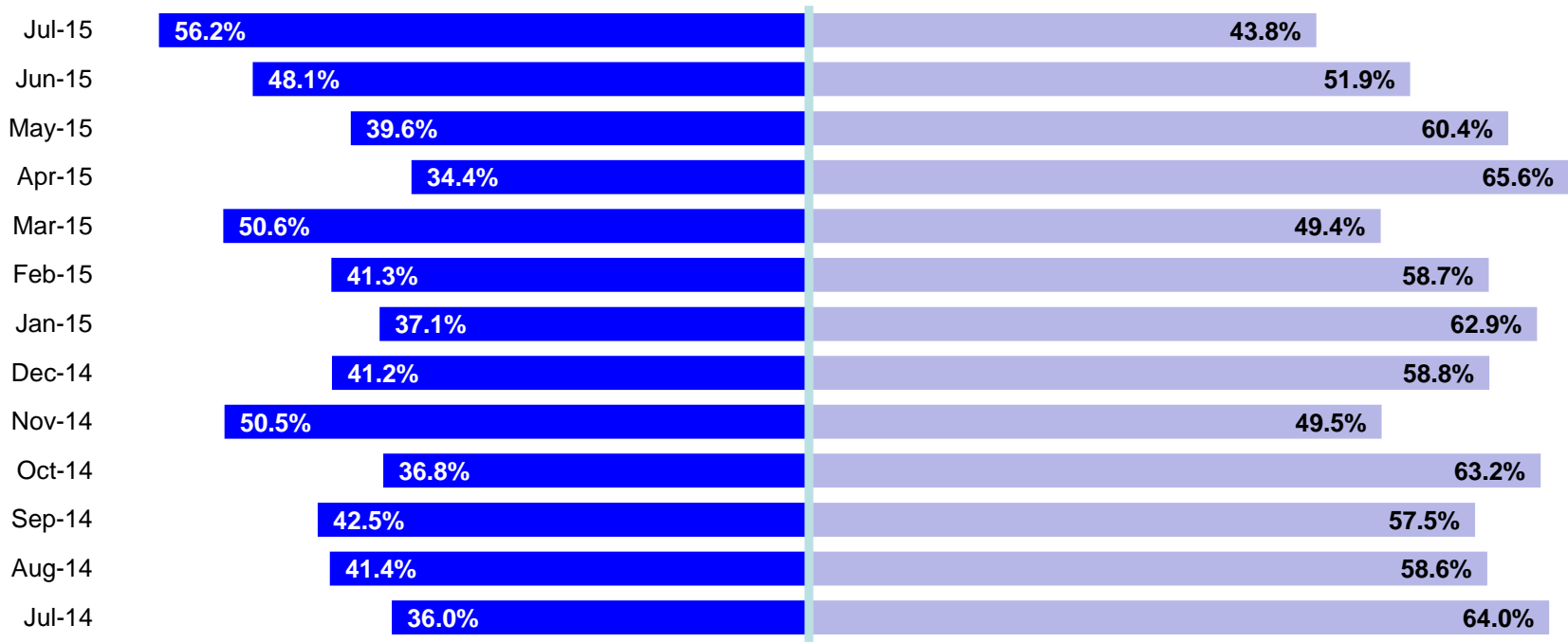


	CY 2012	CY 2013	CY 2014	Jan 2015	Feb 2015	Mar 2015	Apr 2015	May 2015	Jun 2015	July 2015
Article 10 Filings	8,913	9,318	9,900	812	924	1,012	892	940	959	875

Note: The category “Other/Unspecified” includes released with no supervision, no order issued and no outcome specified. Outcomes of cases heard the next day are not captured in this report



### Article 10 Filing Removals, July 2014 – July 2015



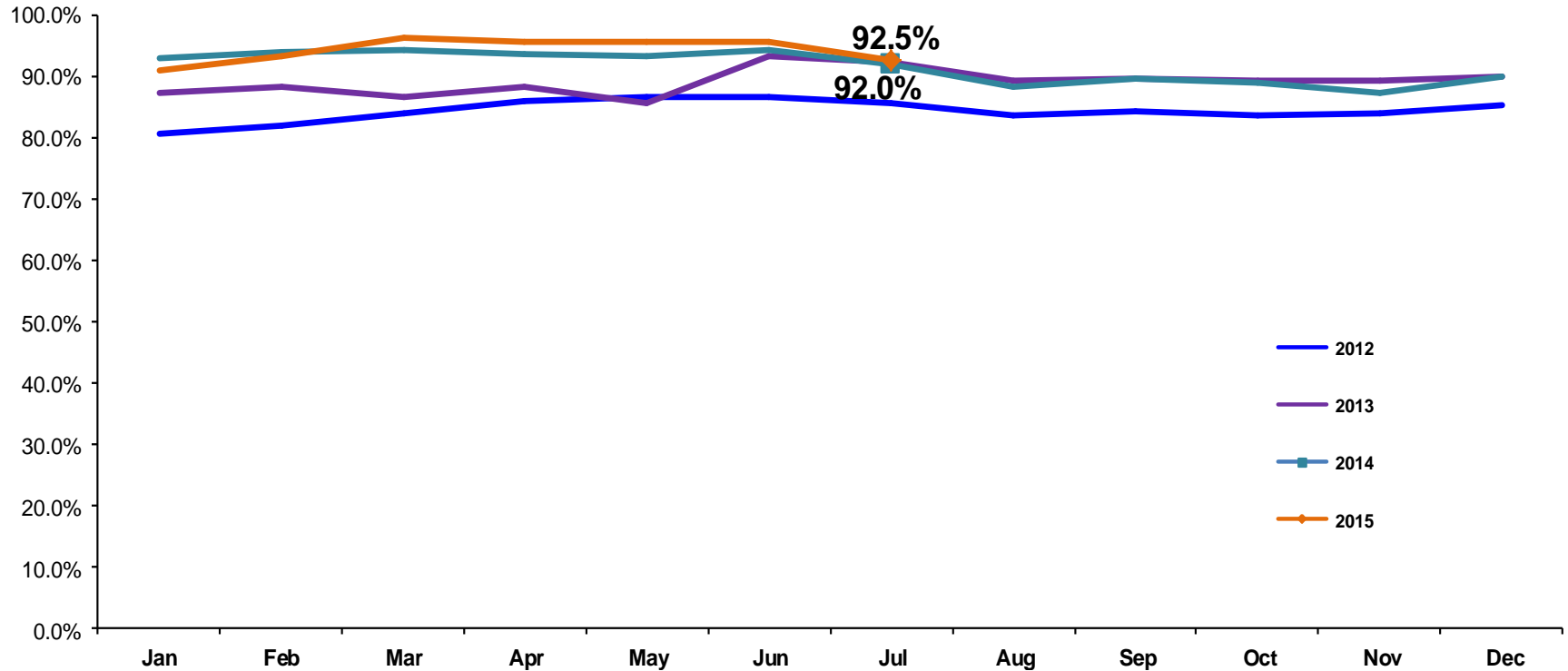
■ Pre-Filing Emergency Removals (court approved at initial hearing) ■ Post-Filing Removals (court ordered at initial hearing)

	Jul 2014	Aug 2014	Sep 2014	Oct 2014	Nov 2014	Dec 2014	Jan 2015	Feb 2015	Mar 2015	Apr 2015	May 2015	Jun 2015	July 2015
Number of Removals	172	227	179	231	194	262	256	235	245	262	250	206	235

## PPRS Utilization Rate

January 2012 – July 2015 (End of Month)

General Preventive



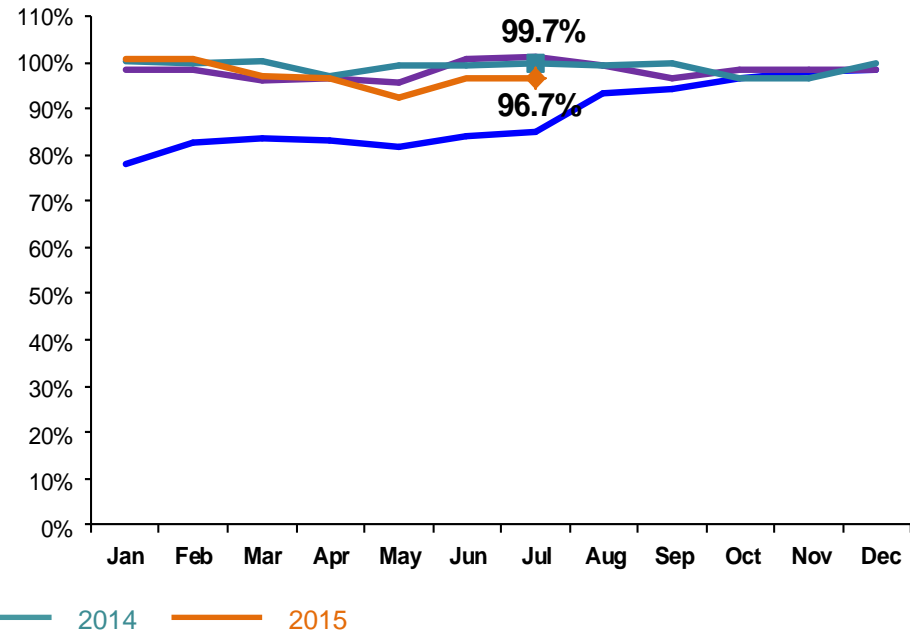
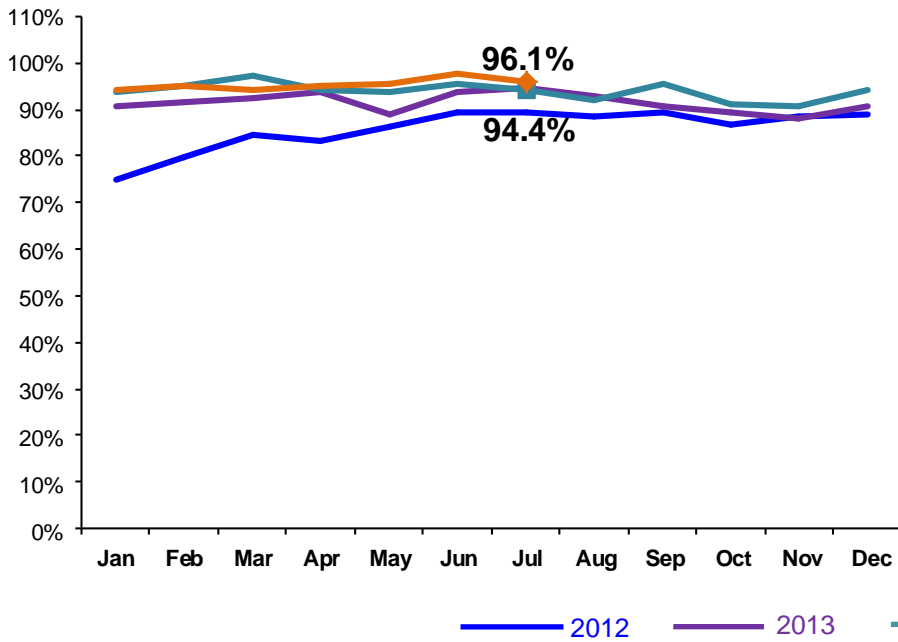
Notes: 1) Beacons programs are included in the GP utilization rates. 2) During June-October 2013 GP programs in the process of converting to EBMs were excluded from the GP utilization statistics.

### PPRS Utilization Rate

January 2012 – July 2015 (End of Month)

Family Treatment Rehabilitation

Medically Fragile

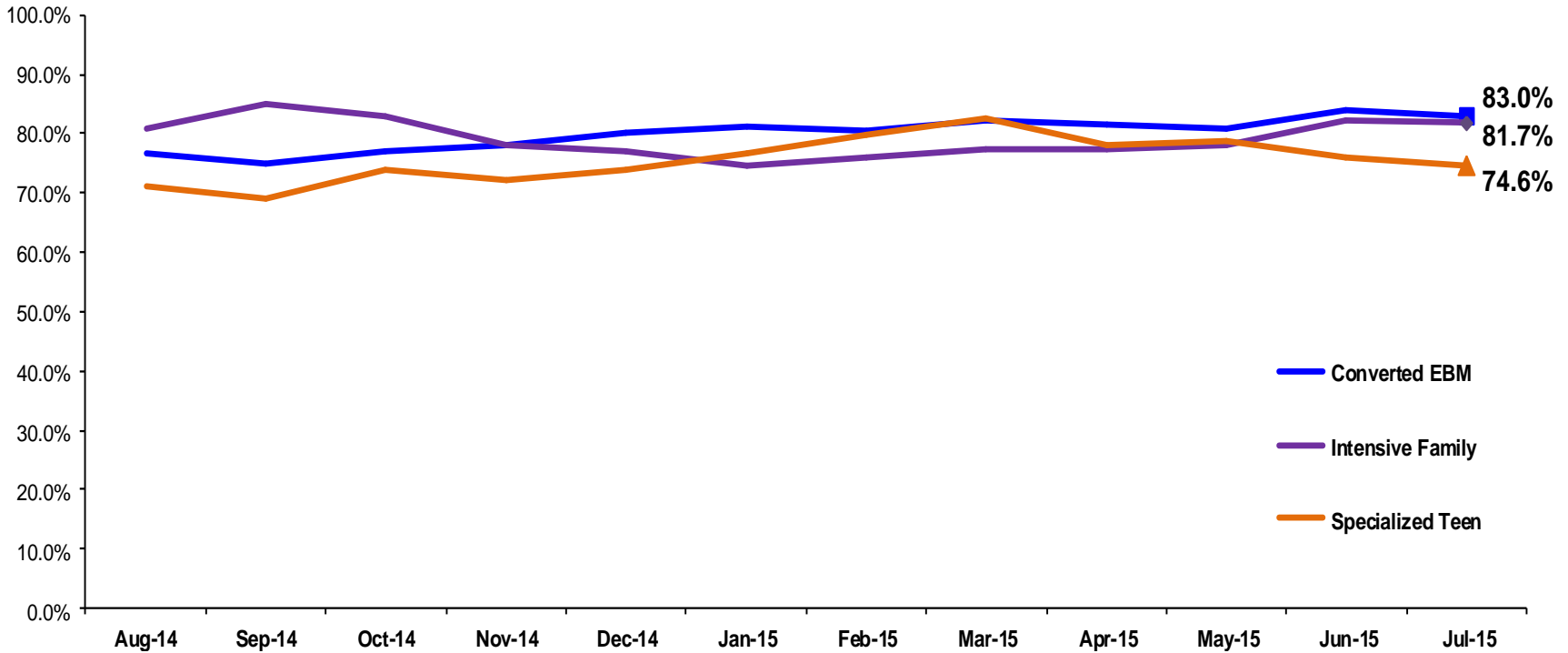


Note: During June–October 2013 FTR programs in the process of converting to EBMs were excluded from the FTR utilization statistics.

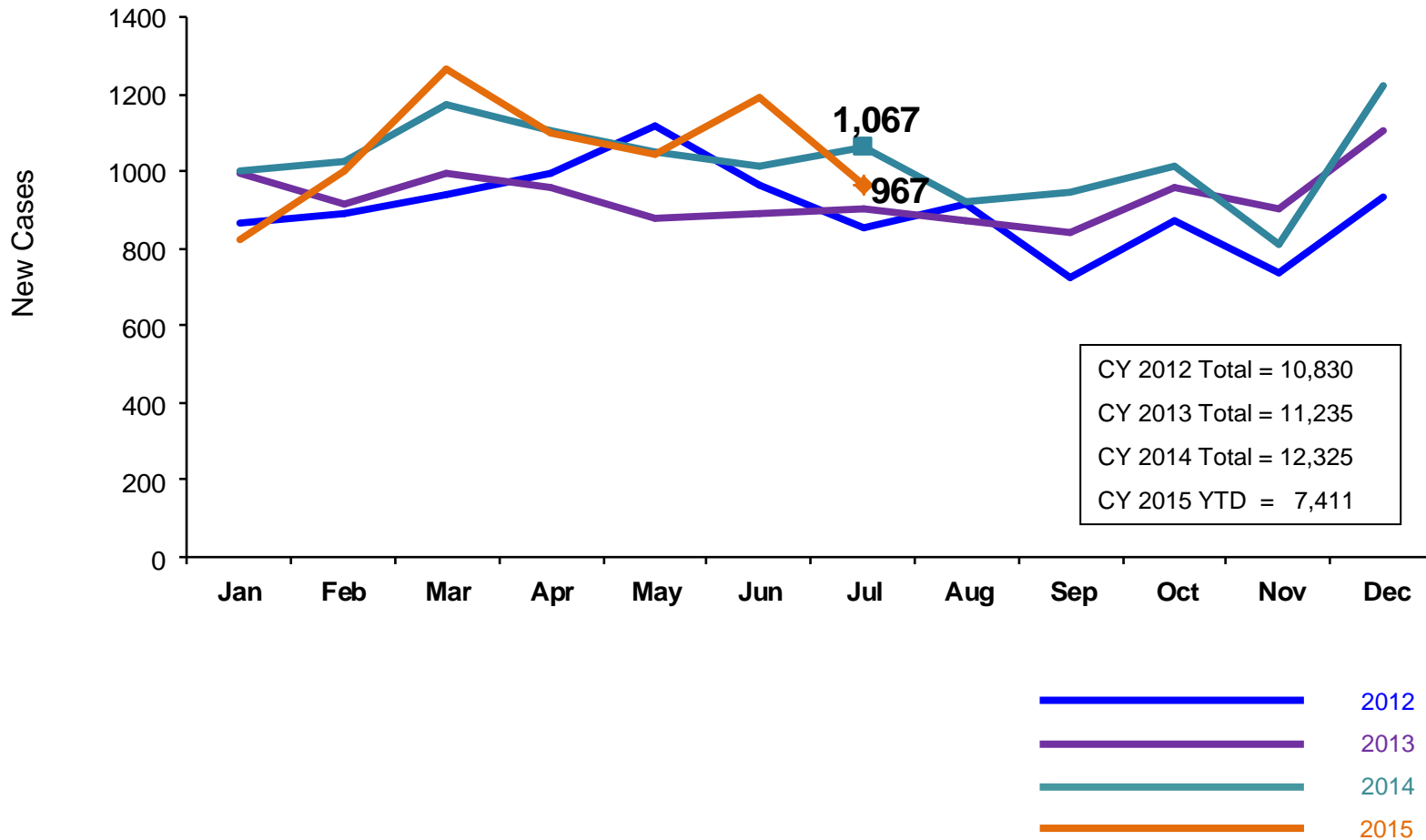
## PPRS Utilization Rate

August 2014 – July 2015 (End of Month)

Converted EBM, Intensive Family and Specialized Teen

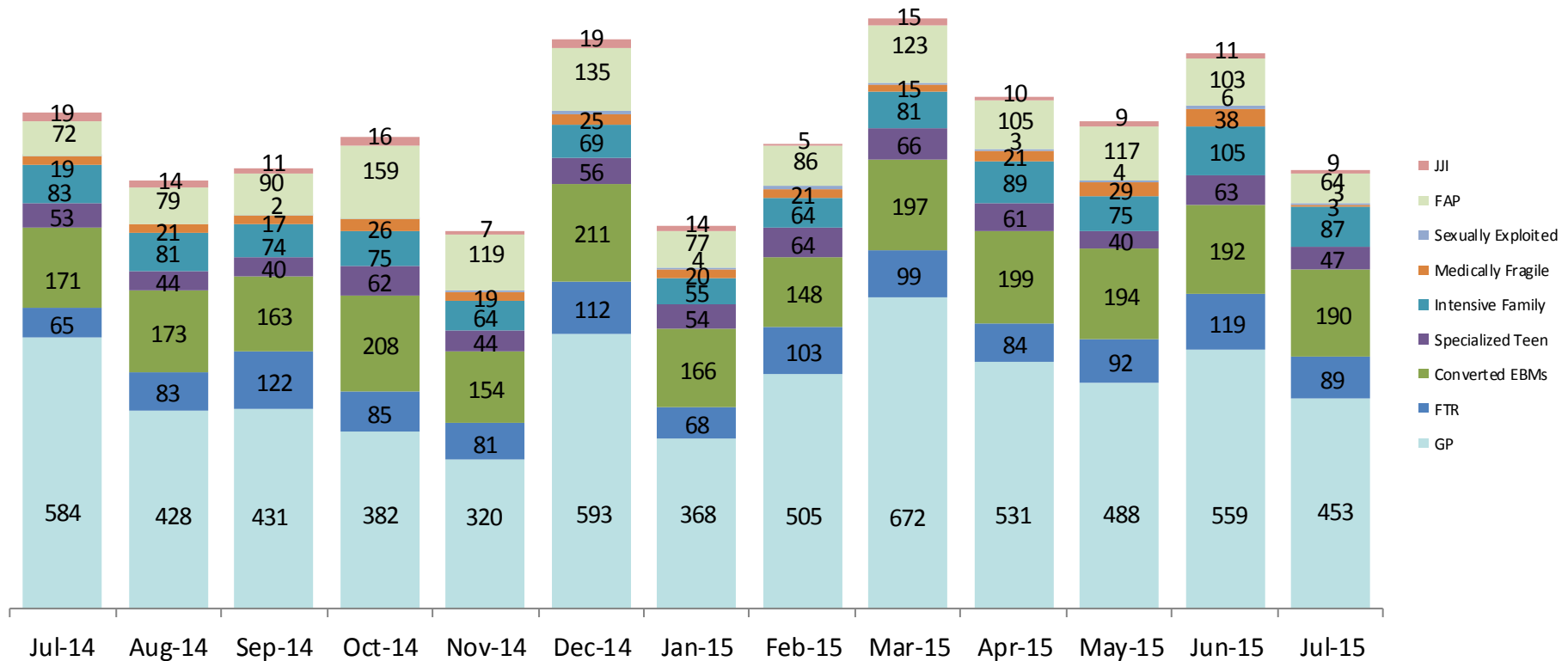


**New Preventive Cases\***  
January 2012 – July 2015



\*Notes: 1) New preventive cases do not include cases transferred from one preventive program to another. 2) See Pages 36 and 37 of the Appendix for supporting data. 13

### New Preventive Cases\* by Program Type July 2014 – July 2015

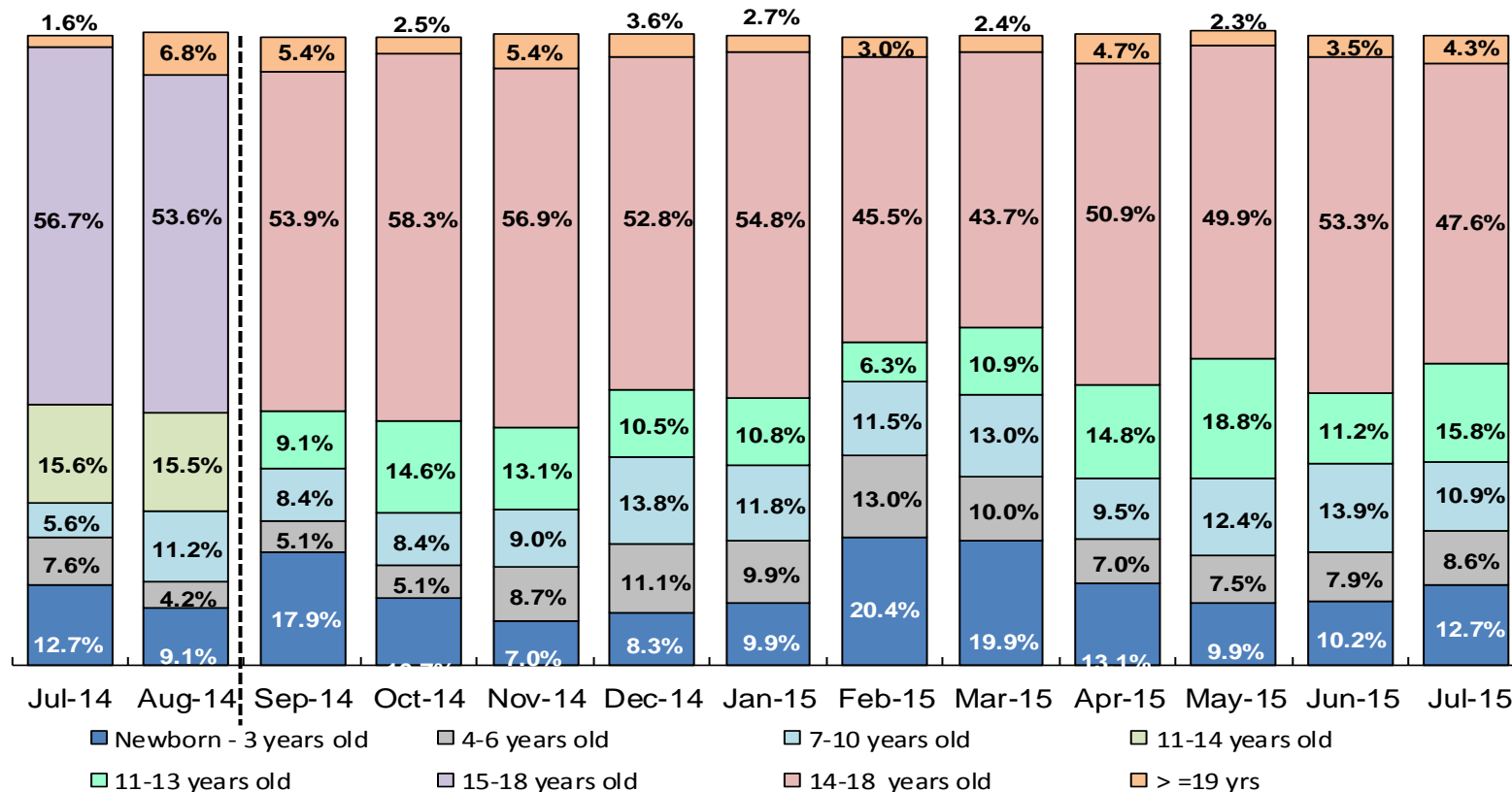


	Jul 2014	Aug 2014	Sep 2014	Oct 2014	Nov 2014	Dec 2014	Jan 2015	Feb 2015	Mar 2015	Apr 2015	May 2015	Jun 2015	Jul 2015
Number of New Preventive Cases	1,067	923	950	1,015	812	1,227	826	1,001	1,270	1,103	1,048	1,196	967

Note: New preventive cases do not include cases transferred from one preventive program to another.

## Average Pre-Placement Residential Monthly Population

July 2014 – July 2015



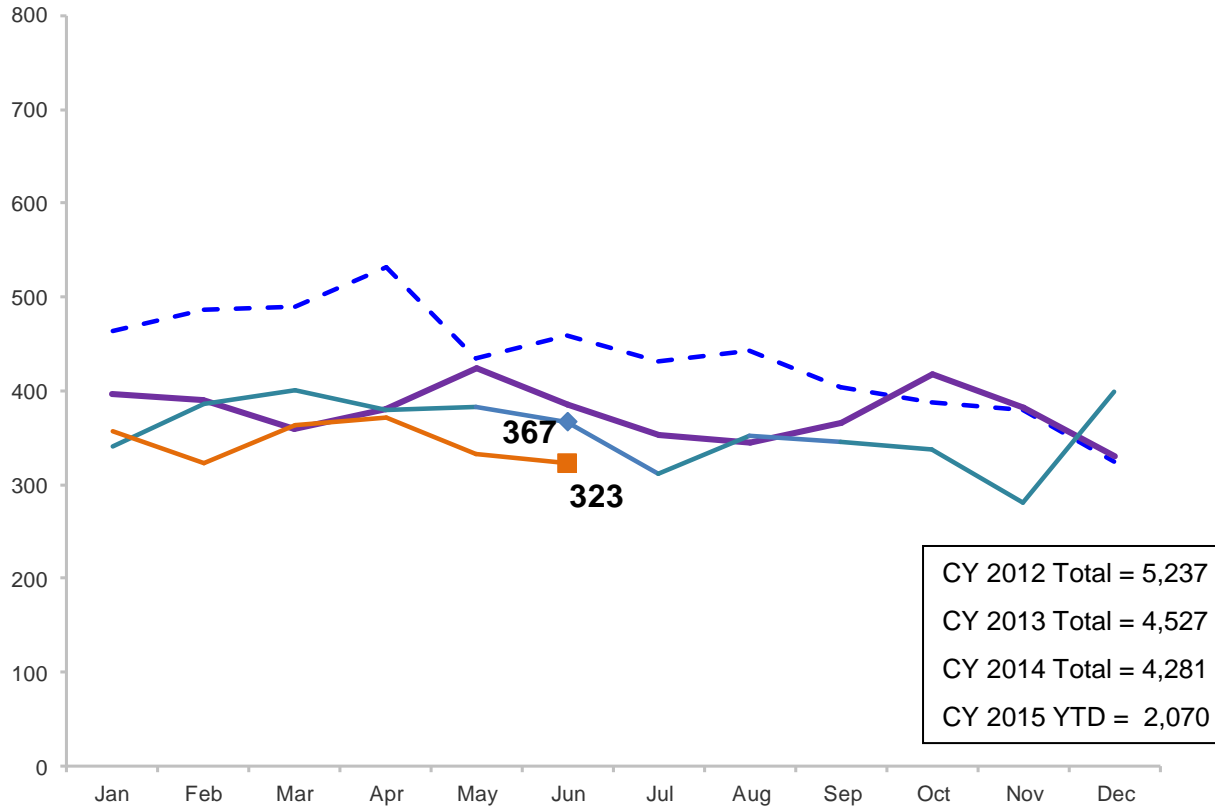
	July 2014	Aug 2014	Sep 2014	Oct 2014	Nov 2014	Dec 2014	Jan 2015	Feb 2015	Mar 2015	Apr 2015	May 2015	Jun 2015	July 2015
Average Number of Children	32	34	37	45	48	44	51	39	50	52	60	50	42

\*Beginning in December 2014 the pre-placement residential population includes children at the Children’s Center and at the MercyFirst Reception Center.

\*Beginning in September 2014, the age categories reported changed from 11-14 to 11-13 year olds and 15-18 to 14-18 year olds.

### Total Monthly Placements

January 2012 – June 2015



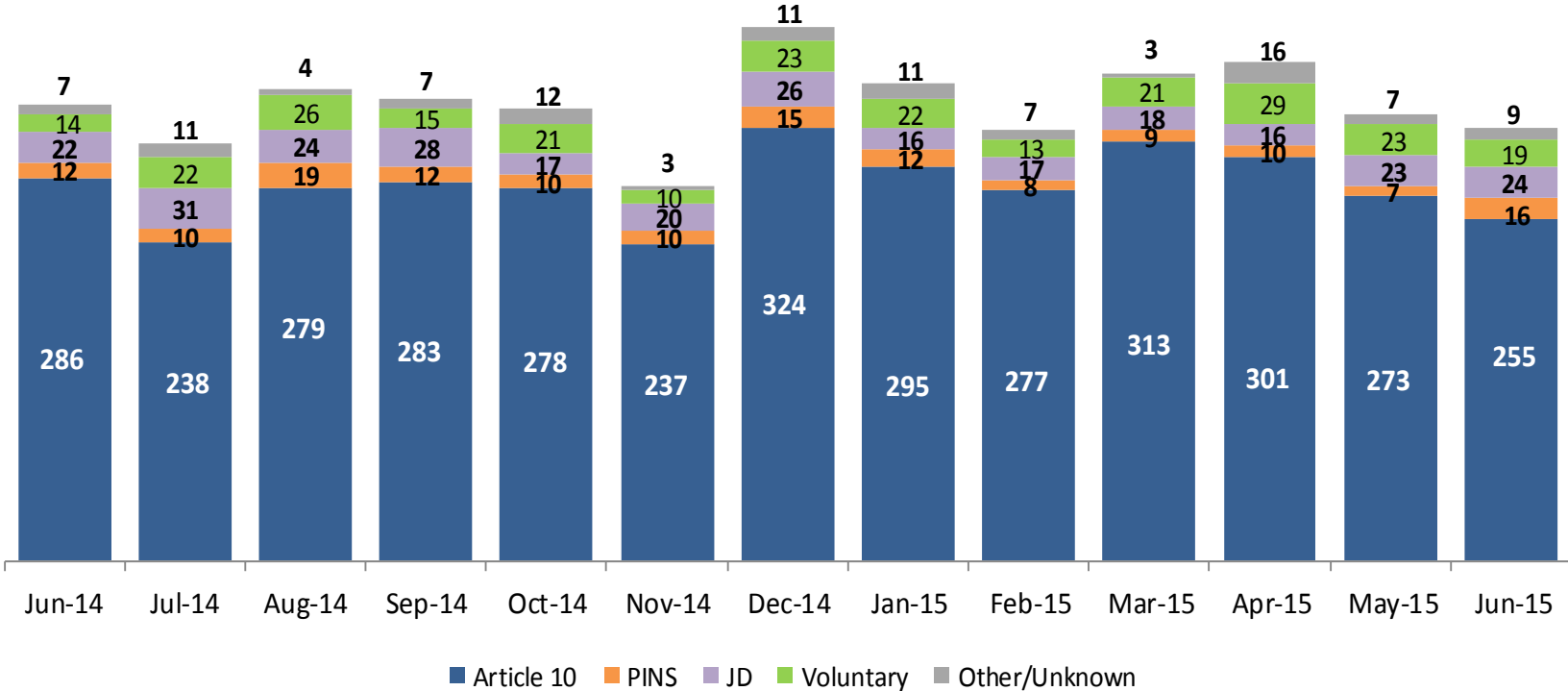
CY 2012 Total = 5,237  
 CY 2013 Total = 4,527  
 CY 2014 Total = 4,281  
 CY 2015 YTD = 2,070

- - - - - 2012
- 2013
- 2014
- 2015



Reason for Initial Placements into Foster Care

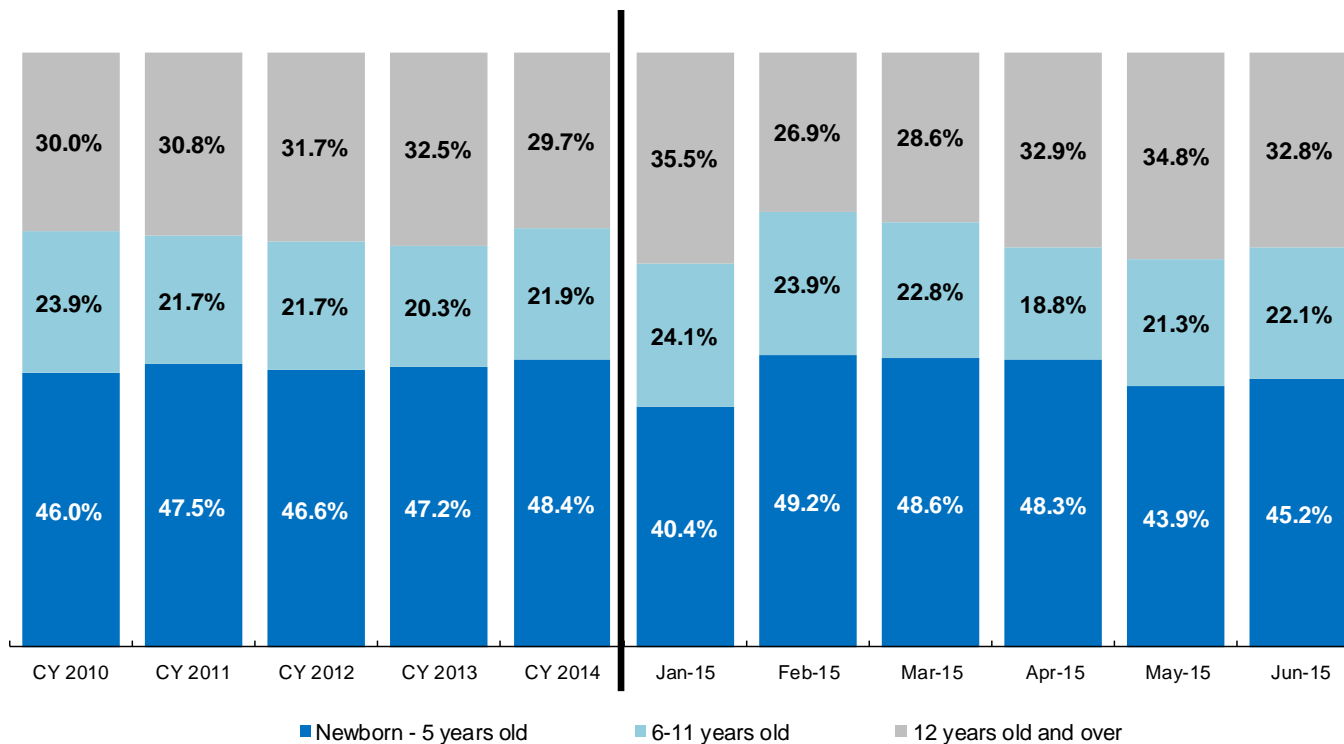
June 2014 – June 2015



	Jun 2014	July 2014	Aug 2014	Sep 2014	Oct 2014	Nov 2014	Dec 2014	Jan 2015	Feb 2015	Mar 2015	Apr 2015	May 2015	Jun 2015
Number of Placements	367	312	352	345	338	280	399	356	322	364	372	333	323

### Placements\* by Age

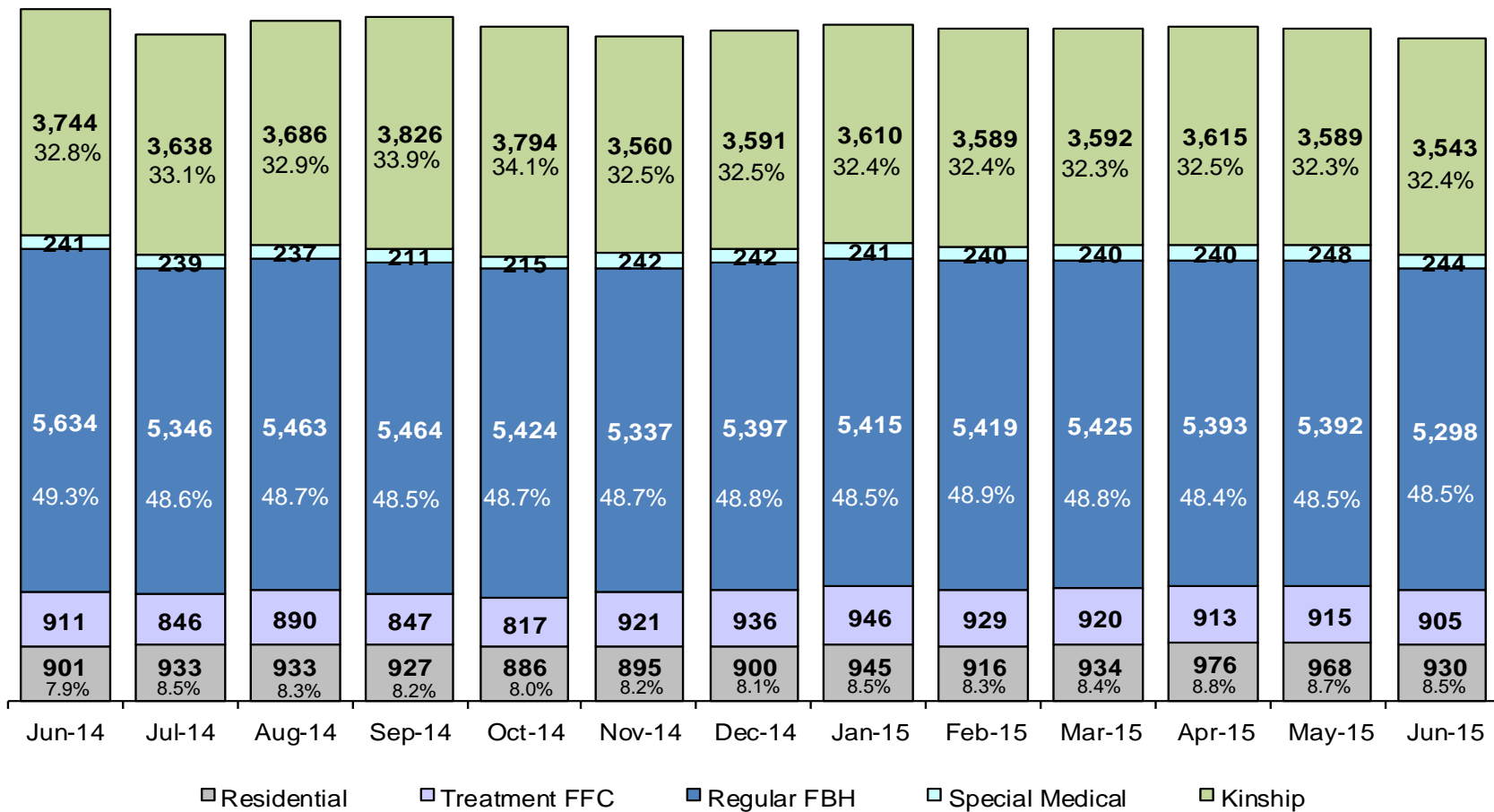
CY 2012 - June 2015



	CY 2012	CY 2013	CY 2014	Jan 2015	Feb 2015	Mar 2015	Apr 2015	May 2015	Jun 2015
Placements (without JDs)	4,823	4,170	3,983	344	305	346	356	310	299

\*Excludes JD placements.

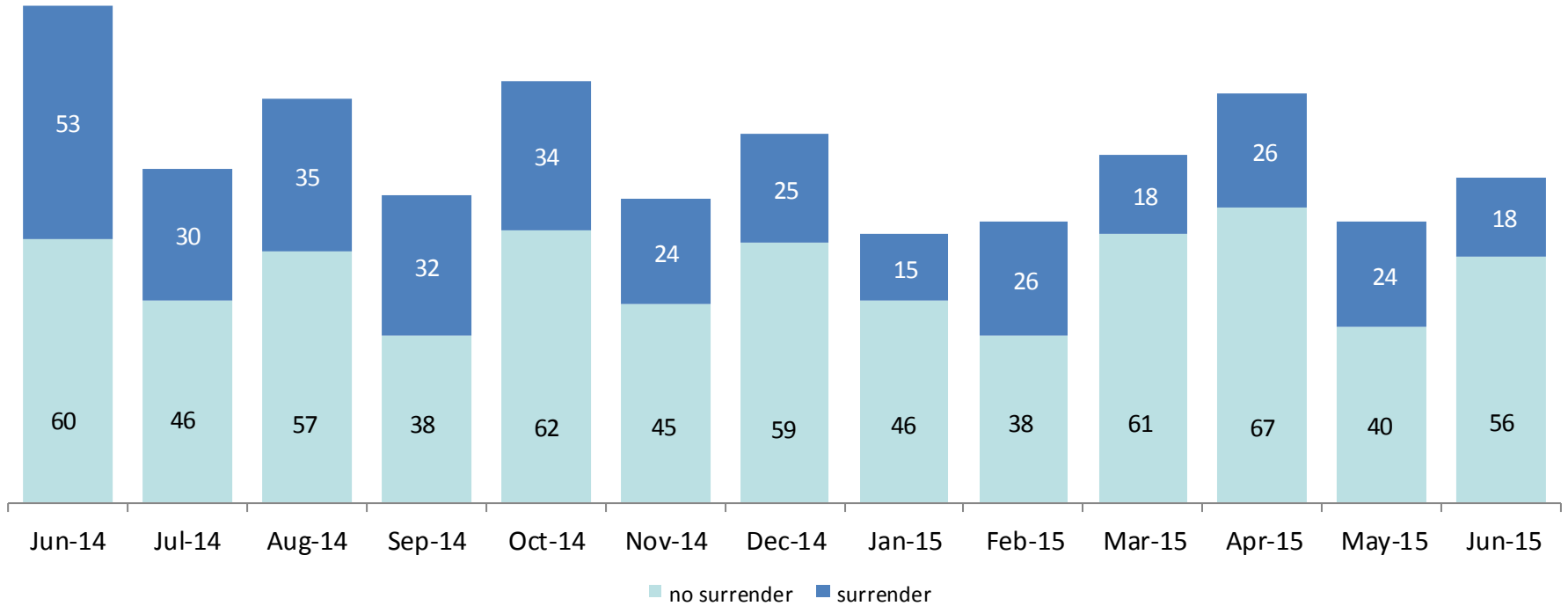
### Children in Foster Care\* June 2014 – June 2015 (end of month)



	Jun 2014	Jul 2014	Aug 2014	Sep 2014	Oct 2014	Nov 2014	Dec 2014	Jan 2015	Feb 2015	Mar 2015	Apr 2015	May 2015	Jun 2015
Number in Foster Care	11,431	11,002	11,209	11,275	11,136	10,955	11,066	11,157	11,093	11,111	11,137	11,112	10,920

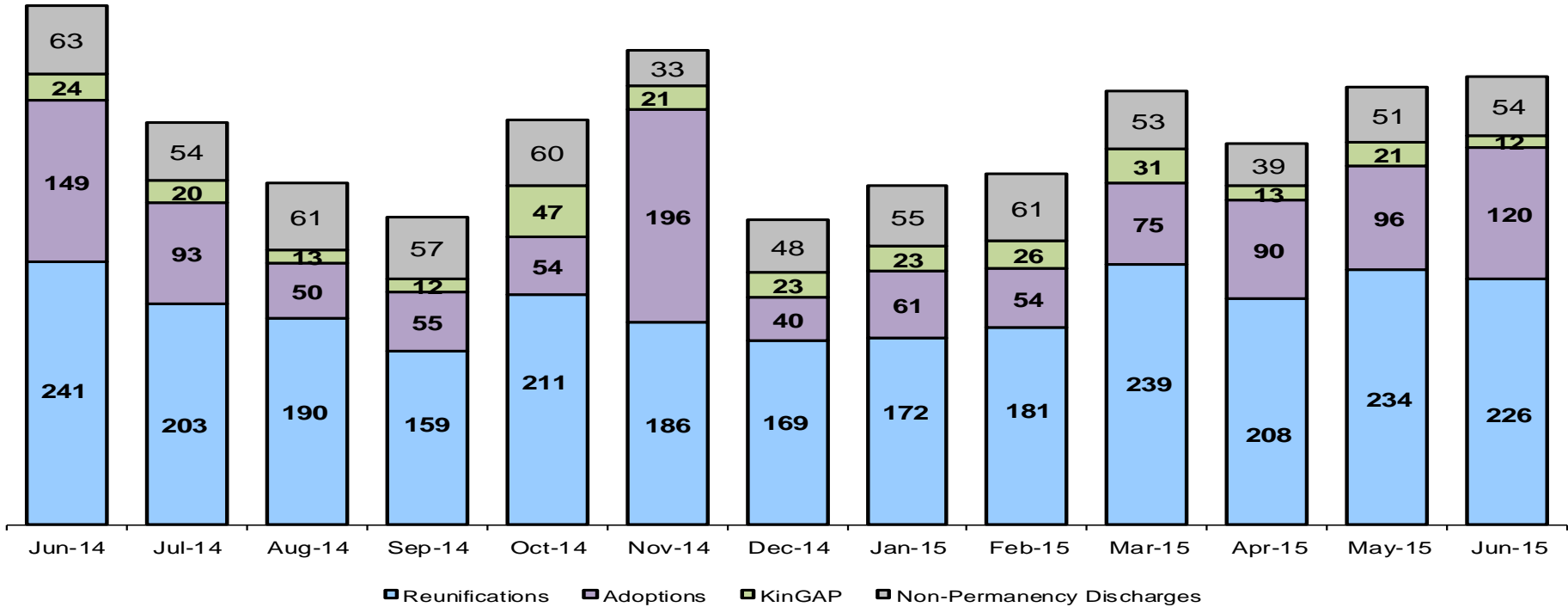
\*Excludes JD placements and includes approximately 400 young children who are living in foster homes or residential care facilities with their mothers who are in foster care (8D children). 19

### Children Freed for Adoption, Surrender by at Least One Parent May 2014 – May 2015



	Jun 2014	Jul 2014	Aug 2014	Sep 2014	Oct 2014	Nov 2014	Dec 2014	Jan 2015	Feb 2015	Mar 2015	Apr 2015	May 2015	Jun 2015
Number Freed for Adoption	113	76	92	70	96	69	84	61	64	79	93	64	56

## Permanency and Non-Permanency\* Discharges from Foster Care\*\* June 2014 – June 2015

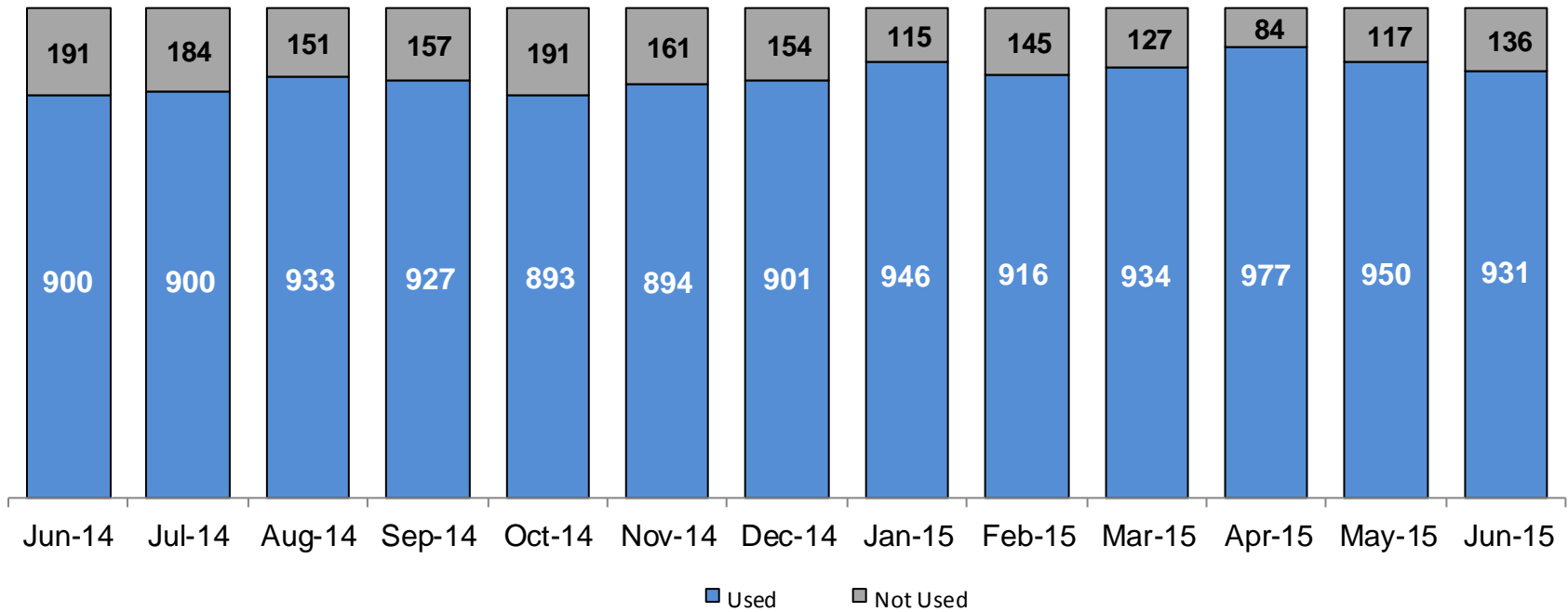


	Jun 2014	Jul 2014	Aug 2014	Sep 2014	Oct 2014	Nov 2014	Dec 2014	Jan 2015	Feb 2015	Mar 2015	Apr 2015	May 2015	Jun 2015
Number of Discharges	477	370	314	283	372	436	280	311	322	398	350	402	412

\*Non-permanency discharges include AWOL, APPLA , other discharge destinations such as psychiatric institutions and correctional facilities and discharges with unspecified destinations.

\*\*Excludes discharges of youth who entered care as a JD.

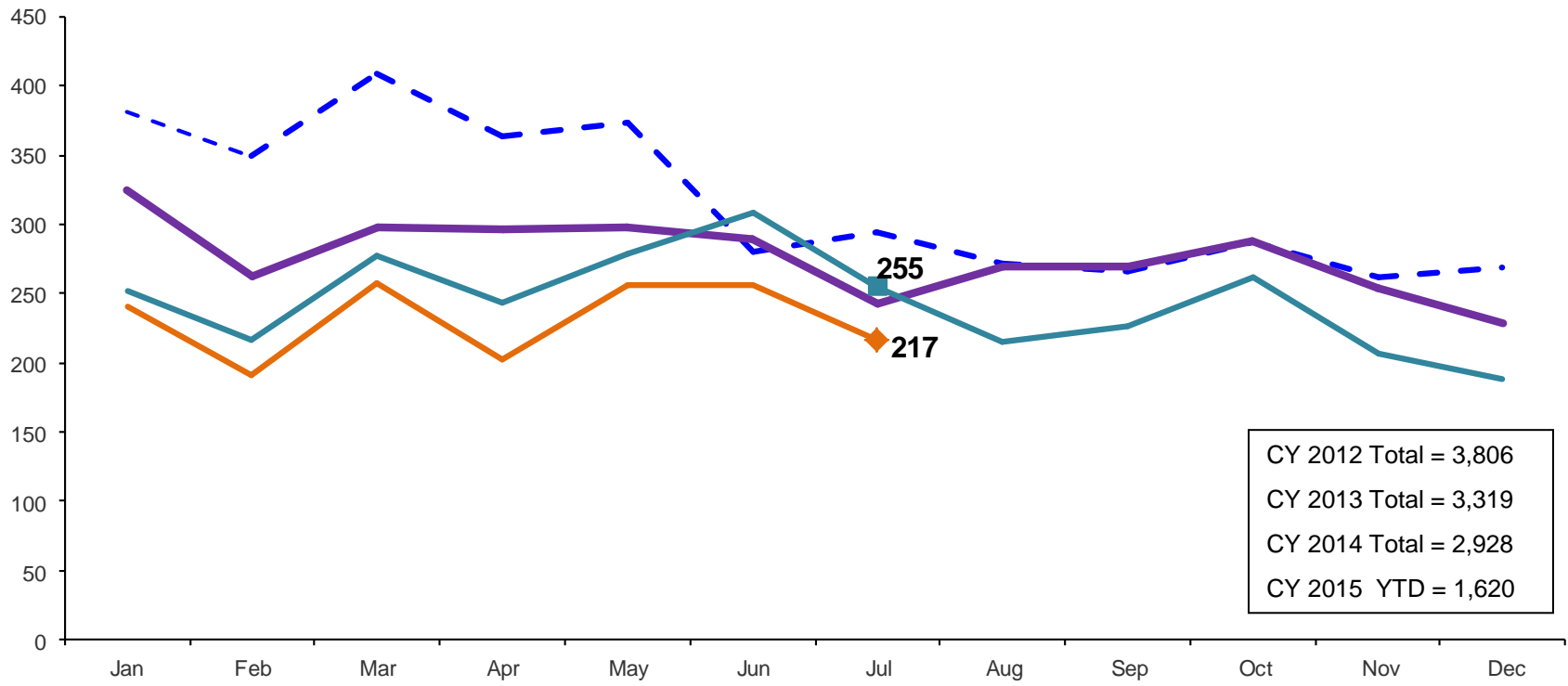
### Residential Care Capacity and Utilization, June 2014 – June 2015



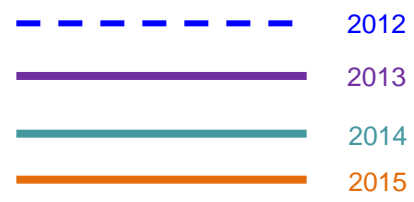
	Jun 2014	Jul 2014	Aug 2014	Sep 2014	Oct 2014	Nov 2014	Dec 2014	Jan 2015	Feb 2015	Mar 2015	Apr 2015	May 2015	Jun 2015
Capacity	1,091	1,084	1,084	1,084	1,084	1,055	1,055	1,061	1,061	1,061	1,061	1,067	1,067

# Total Monthly Admissions to Detention

February 2012 – July 2015 (Monthly Total)

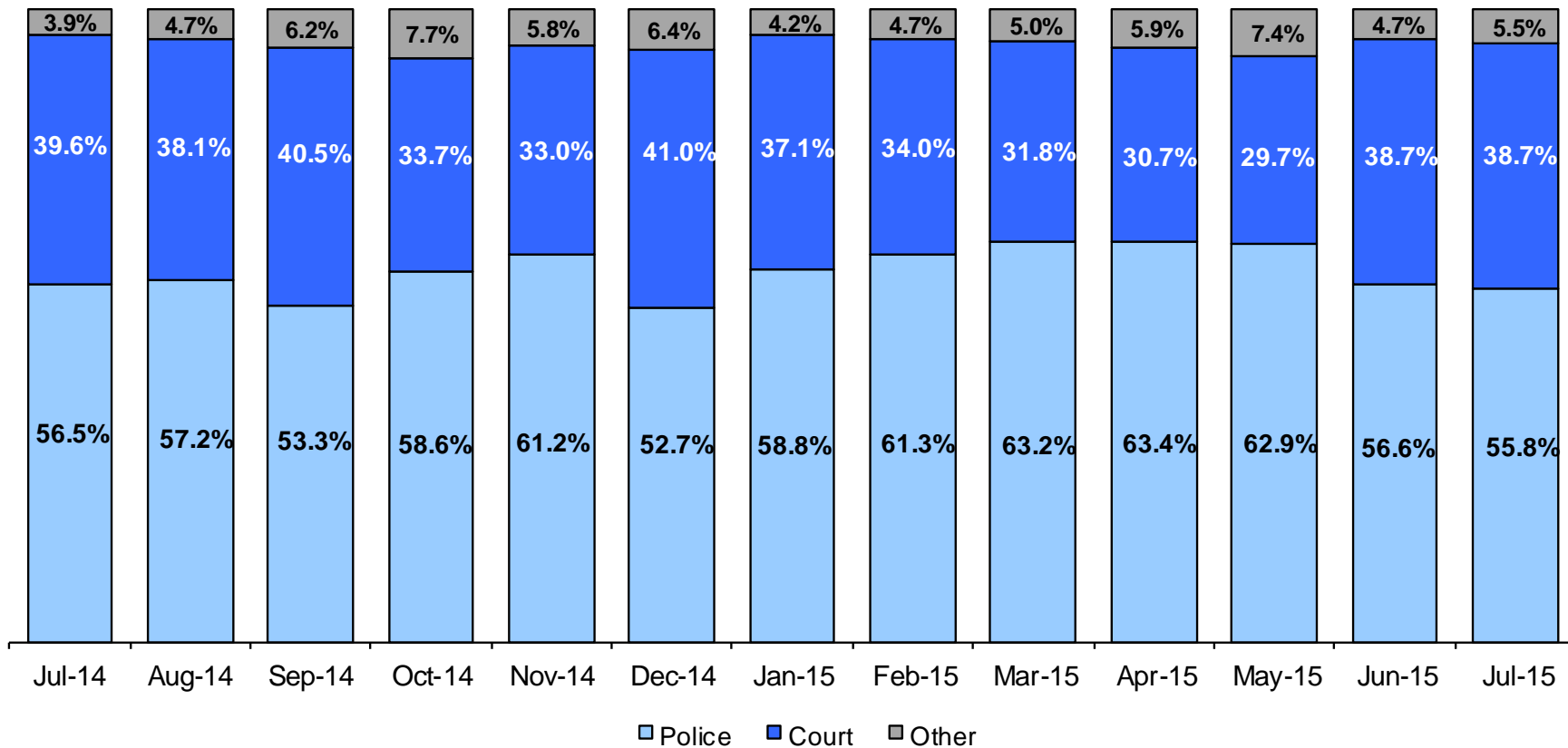


CY 2012 Total = 3,806  
CY 2013 Total = 3,319  
CY 2014 Total = 2,928  
CY 2015 YTD = 1,620



### Admit Authority on Admissions

February 2014 – July 2015 (Monthly Total)



	July 2014	Aug 2014	Sep 2014	Oct 2014	Nov 2014	Dec 2014	Jan 2015	Feb 2015	Mar 2015	Apr 2015	May 2015	Jun 2015	July 2015
Number of Admissions	255	215	227	261	206	188	240	191	258	202	256	256	217

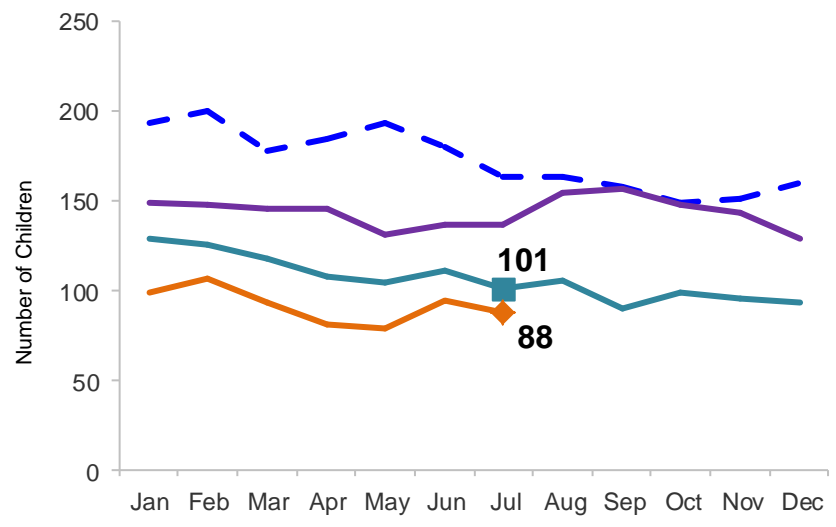
Note: Other Admit Authority includes the Sheriff Department, Department of Corrections and ACS.



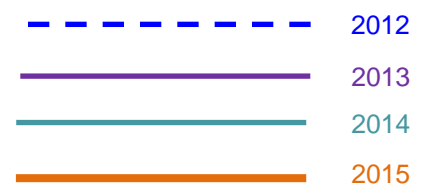
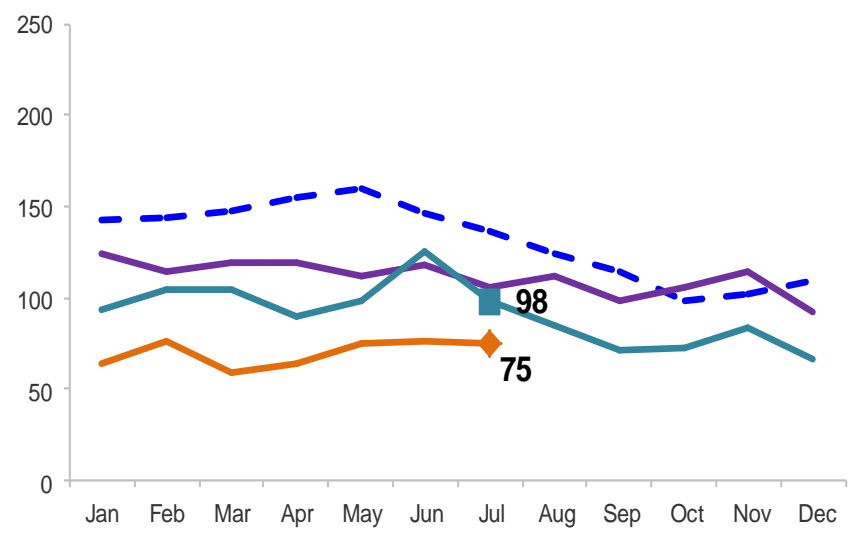
### Monthly Average Daily Population

January 2012 – July 2015

#### Secure Detention

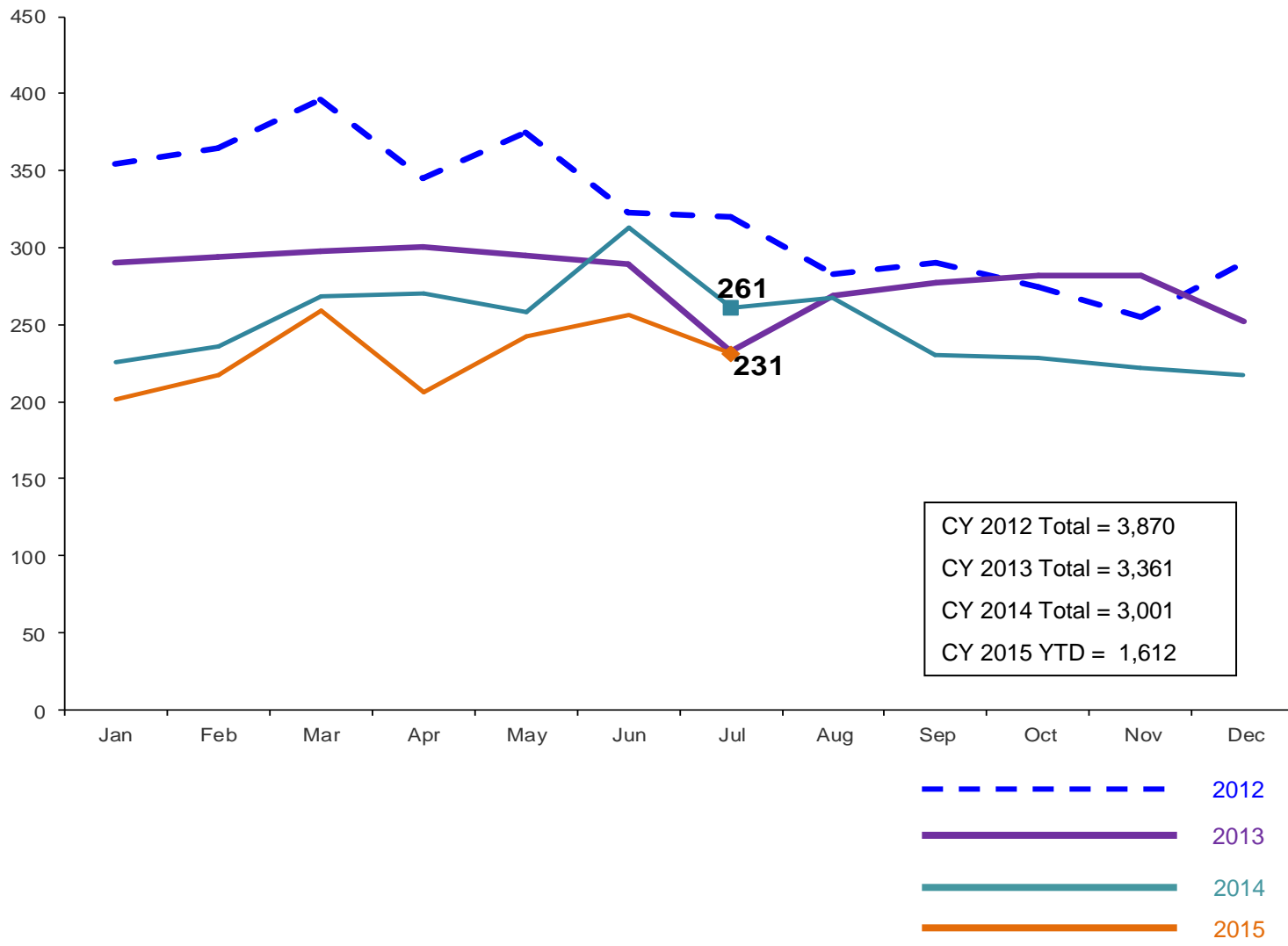


#### Non-Secure Detention



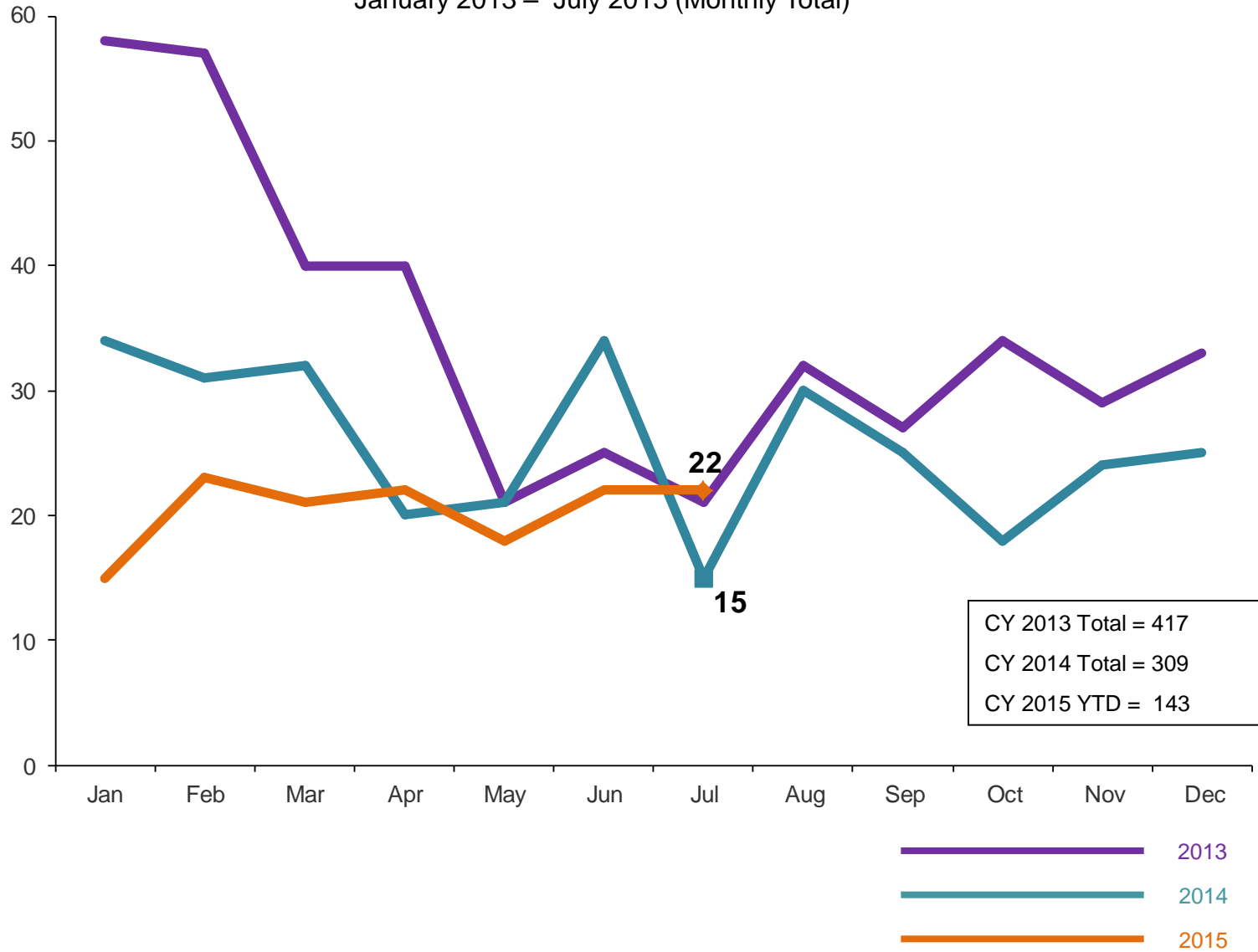
### Total Monthly Releases from Detention

January 2012 – July 2015 (Monthly Total)



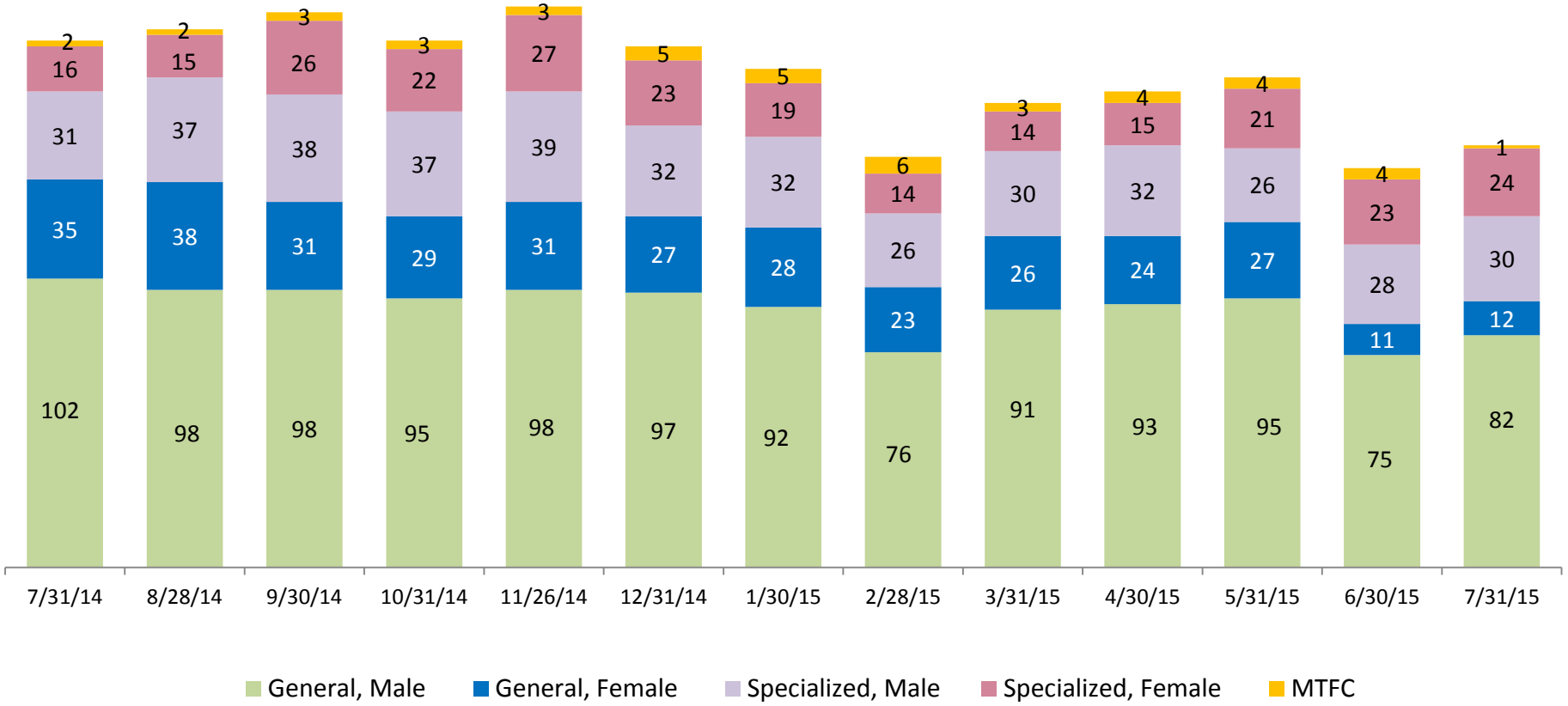
### ACS NSP Intakes

January 2013 – July 2015 (Monthly Total)



## ACS Non-Secure Placement, in 24 hour Care

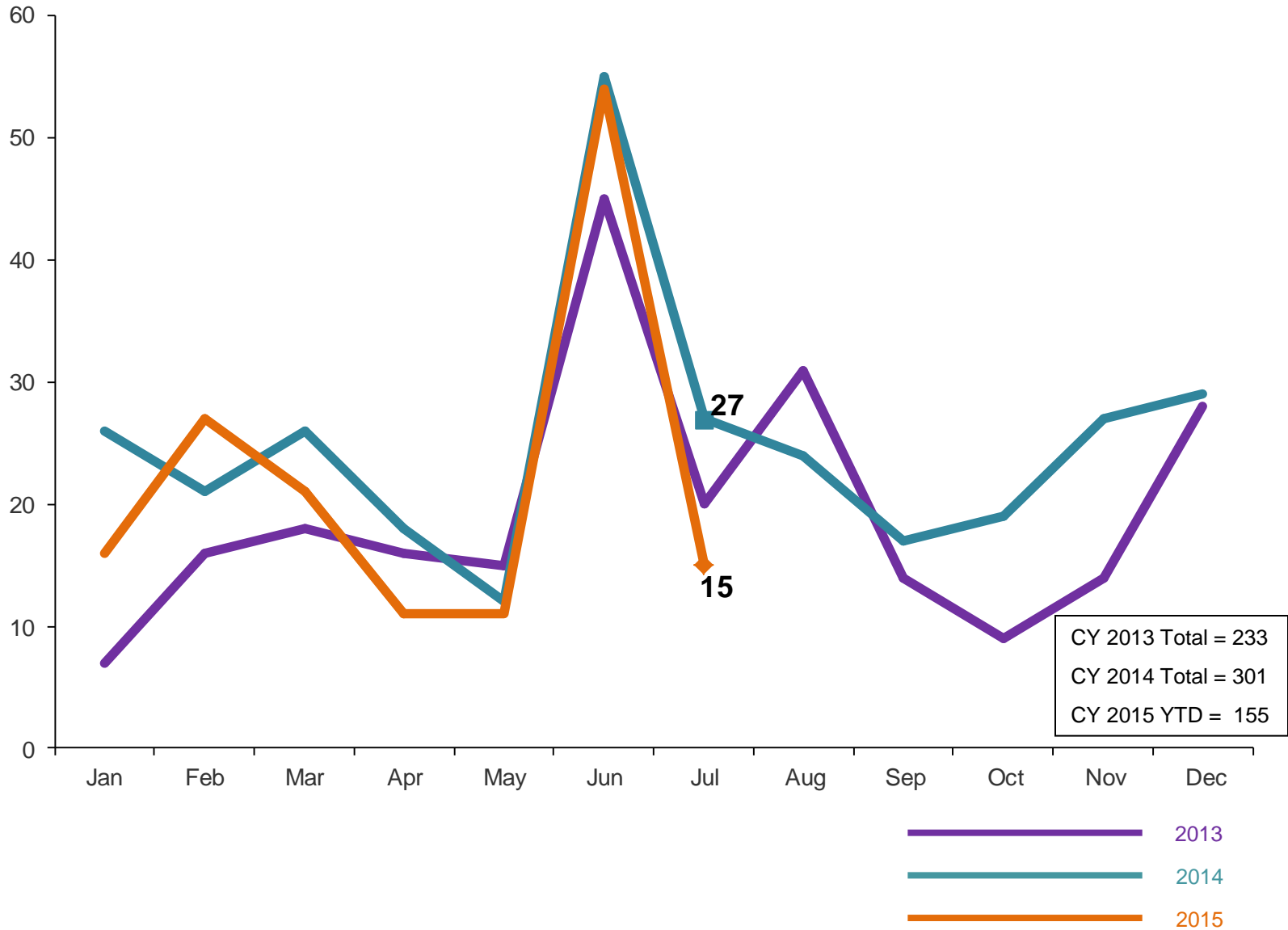
July 2014 – July 2015 (Point-in-Time)



	7/31/14	8/28/14	9/30/14	10/31/14	11/26/14	12/31/14	1/30/15	2/28/15	3/31/15	4/30/15	5/31/15	6/30/15	7/31/15
Number in Placement	186	190	196	186	198	184	176	145	164	168	173	141	149

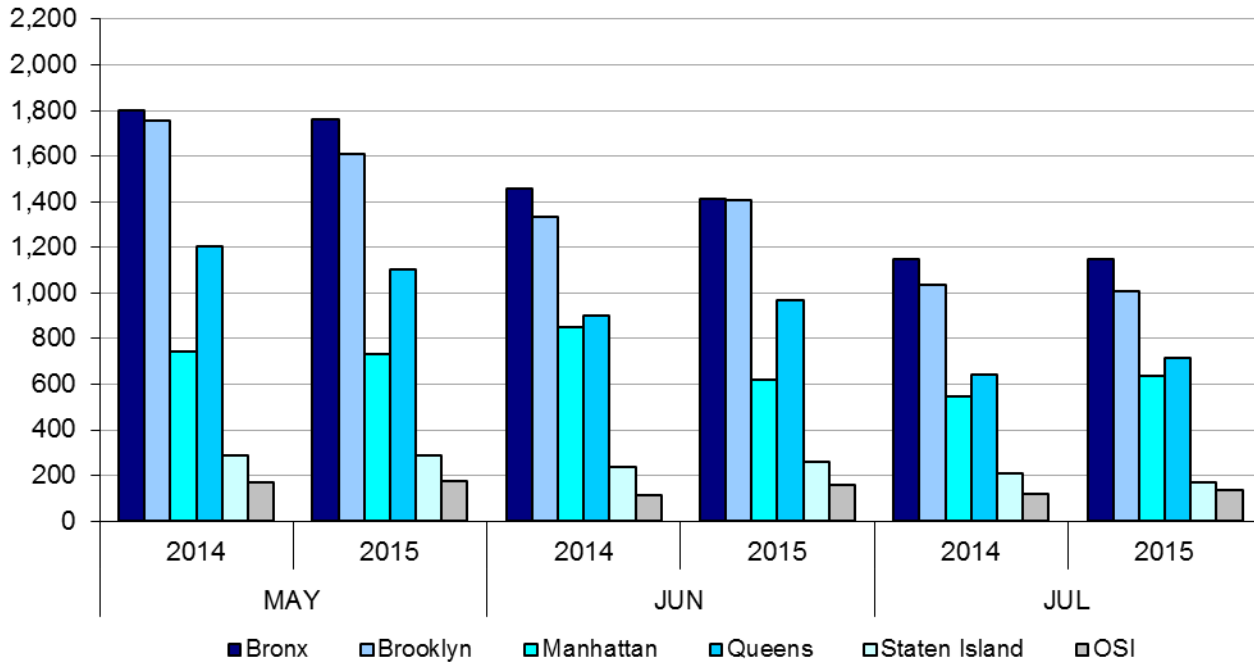
### Releases from NSP to Aftercare

January 2013 – July 2015 (Monthly Total)



# Appendix

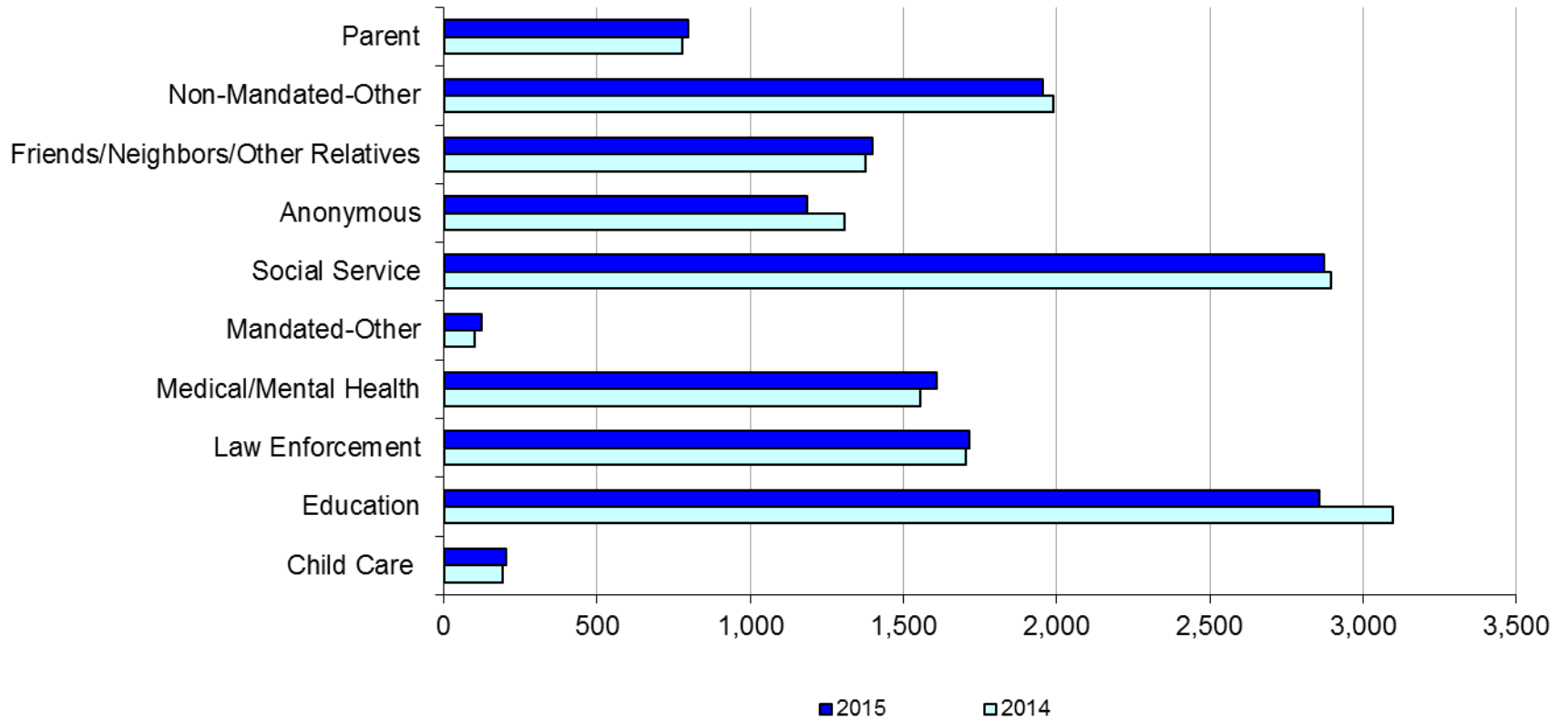
Figure 1: SCR Intakes by Borough, MAY 14 – JUL 14 and MAY 15 – JUL 15



**TABLE 1 - SCR Intake Changes by Borough, MAY 14 – JUL 14 and MAY 15 – JUL 15**

Month	Year	Bronx	Brooklyn	Manhattan	Queens	Staten Island	OSI	Other	Total
MAY	2014	1,800	1,757	746	1,205	287	172	156	6,123
	2015	1,759	1,610	730	1,101	290	177	131	5,799
	% Change	-2.3%	-8.4%	-2.1%	-8.6%	1.0%	2.9%	-16.0%	-5.3%
JUN	2014	1,457	1,333	848	900	239	112	151	5,040
	2015	1,411	1,408	621	968	261	157	136	4,962
	% Change	-3.2%	5.6%	-26.8%	7.6%	9.2%	40.2%	-9.9%	-1.5%
JUL	2014	1,148	1,034	546	641	209	121	124	3,823
	2015	1,147	1,010	639	715	167	137	143	3,958
	% Change	-0.1%	-2.3%	17.0%	11.5%	-20.1%	13.2%	15.3%	3.5%
Total	2014	4,405	4,124	2,140	2,746	735	405	431	14,986
	2015	4,317	4,028	1,990	2,784	718	471	410	14,719
	% Change	-2.0%	-2.3%	-7.0%	1.4%	-2.3%	16.3%	-4.9%	-1.8%

**Figure 2: Citywide SCR Intakes by Reporter Group, MAY 14 – JUL 14 and MAY 15 – JUL 15**

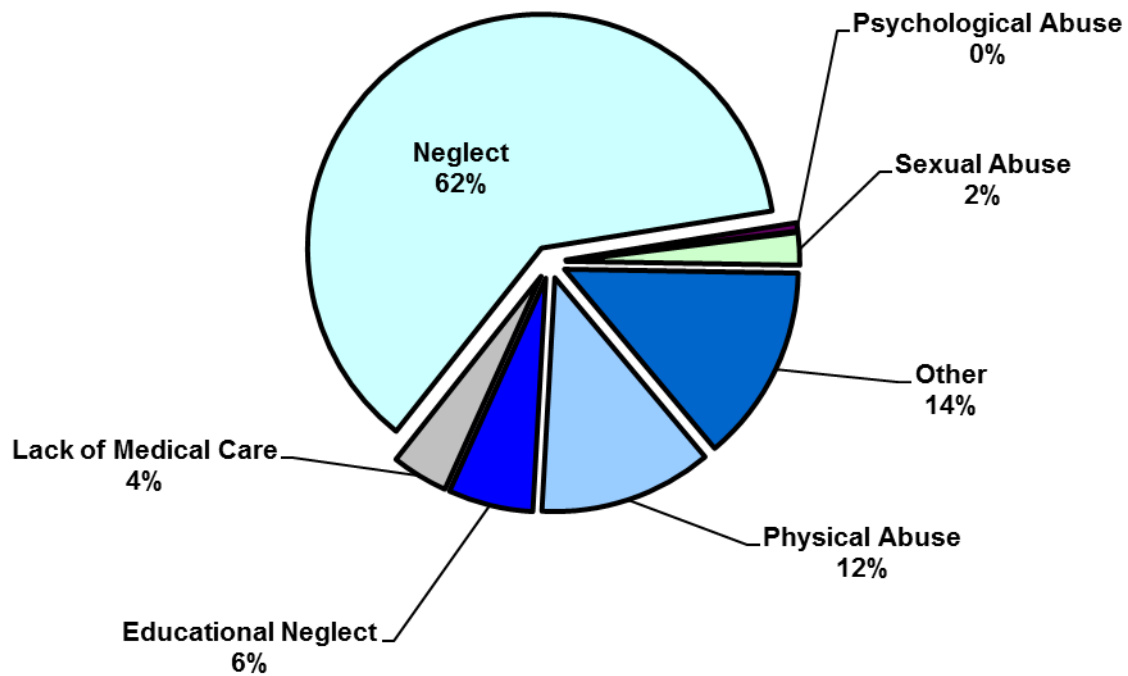




**TABLE 2 - SCR Intakes by Reporter Group, MAY 14 – JUL 14 and MAY 15 – JUL 15**

Year	Child Care/ Substitute Care Personnel	Educational Personnel	Law Enforcement	Medical/ Mental Health Personnel	Mandated- Other	Social Service Personnel	Anonymous	Friends/ Neighbors/ Other Relatives	Non- Mandated- Other	Parent	Foster Parent	Total
<b>Bronx</b>												
2014	48	1,015	406	453	24	869	365	394	632	197	1	4,404
2015	52	905	422	437	40	902	344	372	643	199	0	4,316
% Change	8.3%	-10.8%	3.9%	-3.5%	66.7%	3.8%	-5.8%	-5.6%	1.7%	1.0%	--	-2.0%
<b>Brooklyn</b>												
2014	41	871	477	429	19	732	399	391	563	206	0	4,128
2015	47	852	521	426	28	727	340	408	493	186	0	4,028
% Change	14.6%	-2.2%	9.2%	-0.7%	47.4%	-0.7%	-14.8%	4.3%	-12.4%	-9.7%	--	-2.4%
<b>Manhattan</b>												
2014	26	350	315	229	21	457	172	196	286	87	1	2,140
2015	28	280	276	231	16	422	174	180	293	89	1	1,990
% Change	7.7%	-20.0%	-12.4%	0.9%	-23.8%	-7.7%	1.2%	-8.2%	2.4%	2.3%	0.0%	-7.0%
<b>Queens</b>												
2014	26	660	318	308	22	540	206	241	280	143	0	2,744
2015	28	625	316	317	23	542	210	267	306	150	0	2,784
% Change	7.7%	-5.3%	-0.6%	2.9%	4.5%	0.4%	1.9%	10.8%	9.3%	4.9%	--	1.5%
<b>Staten Island</b>												
2014	12	149	73	57	7	101	109	91	93	42	1	735
2015	9	143	72	93	3	102	69	113	63	51	0	718
% Change	-25.0%	-4.0%	-1.4%	63.2%	-57.1%	1.0%	-36.7%	24.2%	-32.3%	21.4%	--	-2.3%
<b>OSI</b>												
2014	30	25	21	44	5	65	33	29	90	63	0	405
2015	33	32	24	50	10	60	37	27	117	80	1	471
% Change	10.0%	28.0%	14.3%	13.6%	100.0%	-7.7%	12.1%	-6.9%	30.0%	27.0%	--	16.3%
<b>Other</b>												
2014	7	26	92	35	1	133	23	33	44	40	0	434
2015	6	22	84	53	4	118	12	33	41	42	0	415
% Change	-14.3%	-15.4%	-8.7%	51.4%	300.0%	-11.3%	-47.8%	0.0%	-6.8%	5.0%	--	-4.4%
<b>Citywide</b>												
2014	190	3,096	1,702	1,555	99	2,897	1,307	1,375	1,988	778	3	14,990
2015	203	2,859	1,715	1,607	124	2,873	1,186	1,400	1,956	797	2	14,722
% Change	6.8%	-7.7%	0.8%	3.3%	25.3%	-0.8%	-9.3%	1.8%	-1.6%	2.4%	-33.3%	-1.8%

**Figure 3: SCR Allegations, MAY 15 – JUL 15**



Total Allegations = 37,683

**TABLE 3 - SCR Allegations, MAY 14 - JUL 14 and MAY 15 – JUL 15**

Year	Physical Abuse	Educational Neglect	Lack of Medical Care	Neglect	Psychological Abuse	Sexual Abuse	Other	Total
<b>Bronx</b>								
2014	1,322	955	534	7,351	52	225	1,554	11,993
2015	1,326	816	487	7,021	71	240	1,479	11,440
% Change	0.3%	-14.6%	-8.8%	-4.5%	36.5%	6.7%	-4.8%	-4.6%
<b>Brooklyn</b>								
2014	1,296	708	410	6,776	58	240	1,468	10,956
2015	1,239	692	361	6,537	43	235	1,425	10,532
% Change	-4.4%	-2.3%	-12.0%	-3.5%	-25.9%	-2.1%	-2.9%	-3.9%
<b>Manhattan</b>								
2014	469	254	169	2762	29	85	548	4,316
2015	451	222	185	2450	19	90	538	3,955
% Change	-3.8%	-12.6%	9.5%	-11.3%	-34.5%	5.9%	-1.8%	-8.4%
<b>Queens</b>								
2014	896	333	260	4,133	46	141	907	6,716
2015	929	317	288	4,108	55	156	959	6,812
% Change	3.7%	-4.8%	10.8%	-0.6%	19.6%	10.6%	5.7%	1.4%
<b>Staten Island</b>								
2014	218	100	50	1,383	9	39	380	2,179
2015	186	102	63	1,333	16	35	378	2,113
% Change	-14.7%	2.0%	26.0%	-3.6%	77.8%	-10.3%	-0.5%	-3.0%
<b>OSI</b>								
2014	251	41	64	1,180	7	53	158	1,754
2015	303	33	57	1,282	7	60	125	1,867
% Change	20.7%	-19.5%	-10.9%	8.6%	0.0%	13.2%	-20.9%	6.4%
<b>Other</b>								
2014	118	31	28	571	9	29	205	991
2015	86	32	34	549	3	28	232	964
% Change	-27.1%	3.2%	21.4%	-3.9%	-66.7%	-3.4%	13.2%	-2.7%
<b>Citywide</b>								
2014	4,570	2,422	1,515	24,156	210	812	5,220	38,905
2015	4,520	2,214	1,475	23,280	214	844	5,136	37,683
% Change	-1.1%	-8.6%	-2.6%	-3.6%	1.9%	3.9%	-1.6%	-3.1%

**TABLE 4 - Purchased Preventive Cases  
Opened and Closed  
January 2012 to July 2015**

Month	Opened Cases	Closed Cases
<b>2012</b>		
Jan-12	870	629
Feb-12	889	835
Mar-12	944	991
Apr-12	997	870
May-12	1,117	979
Jun-12	965	869
Jul-12	853	979
Aug-12	917	1,007
Sep-12	727	900
Oct-12	875	915
Nov-12	738	702
Dec-12	938	871
<b>2013</b>		
Jan-13	960	884
Feb-13	873	916
Mar-13	962	1,171
Apr-13	940	988
May-13	864	1,337
Jun-13	863	780
Jul-13	868	1,004
Aug-13	802	1,084
Sep-13	844	724
Oct-13	933	765
Nov-13	901	685
Dec-13	1,106	552
<b>2014</b>		
Jan-14	983	640
Feb-14	987	679
Mar-14	1,146	874
Apr-14	1,074	896
May-14	1,042	888
Jun-14	976	762
Jul-14	1,050	1,077
Aug-14	944	943
Sep-14	987	705
Oct-14	1,050	819
Nov-14	818	638
Dec-14	1,268	721
<b>2015</b>		
Jan-15	826	716
Feb-15	1,001	590
Mar-15	1,270	686
Apr-15	1,103	743
May-15	1,048	842
Jun-15	1,196	797
Jul-15	967	1,070

**Table 5 - Referrals to Purchased Preventive Services by Source  
January 2012 to July 2015**

Month	Total Referrals	Division of Child Protection	Foster Care Agencies	PPRS Transfer	School	Self	Other Sources*
<b>2012</b>							
Jan-12	1,431	66.5%	0.7%	8.5%	3.6%	3.8%	17.0%
Feb-12	1,043	78.2%	1.1%	9.0%	1.9%	6.7%	3.1%
Mar-12	1,525	73.6%	0.9%	6.0%	1.8%	3.9%	13.8%
Apr-12	1,370	72.8%	1.0%	9.4%	1.2%	4.2%	11.4%
May-12	1,463	70.9%	1.0%	7.6%	1.1%	4.4%	15.0%
Jun-12	1,279	73.8%	0.5%	5.9%	1.0%	4.7%	14.2%
Jul-12	1,308	77.4%	1.2%	7.0%	0.3%	3.7%	10.5%
Aug-12	1,391	74.0%	0.9%	11.7%	0.3%	2.9%	10.2%
Sep-12	1,110	70.5%	1.9%	9.6%	1.2%	5.0%	11.9%
Oct-12	1,159	61.1%	1.4%	12.6%	2.7%	4.9%	17.3%
Nov-12	1,106	67.0%	1.0%	9.9%	2.2%	4.7%	15.3%
Dec-12	1,206	68.7%	0.8%	5.8%	2.7%	5.6%	16.4%
CY 2012	15,391	71.3%	1.0%	8.5%	1.6%	4.5%	13.1%
<b>2013</b>							
Jan-13	1,474	74.1%	1.2%	7.3%	1.2%	3.7%	12.5%
Feb-13	1,308	75.8%	1.1%	8.0%	1.6%	2.9%	10.6%
Mar-13	1,270	73.5%	1.2%	6.7%	2.4%	3.9%	12.3%
Apr-13	1,421	77.9%	0.8%	7.4%	0.9%	3.0%	10.1%
May-13	1,320	68.4%	0.5%	10.2%	1.5%	3.8%	15.5%
Jun-13	953	69.2%	1.2%	9.4%	2.6%	5.0%	12.6%
Jul-13	1,014	66.3%	1.9%	14.4%	1.6%	3.9%	11.9%
Aug-13	1,212	70.5%	0.7%	11.8%	0.7%	4.7%	11.6%
Sep-13	1,262	64.0%	2.1%	11.3%	1.7%	6.7%	14.2%
Oct-13	1,319	61.0%	1.1%	9.0%	2.9%	7.5%	18.5%
Nov-13	1,249	55.9%	1.6%	10.5%	4.6%	9.2%	18.3%
Dec-13	1,464	62.2%	1.2%	8.2%	2.3%	9.2%	17.0%
CY 2013	15,266	68.3%	1.2%	9.4%	2.0%	5.3%	13.8%
<b>2014</b>							
Jan-14	1,537	70.0%	1.2%	6.6%	2.3%	5.8%	14.2%
Feb-14	1,334	69.7%	0.8%	8.4%	1.7%	5.5%	13.9%
Mar-14	1,612	70.0%	1.4%	8.6%	1.6%	5.3%	13.1%
Apr-14	1,525	70.2%	0.9%	7.6%	2.1%	3.7%	15.4%
May-14	1,580	74.4%	0.7%	8.3%	1.4%	5.2%	10.0%
Jun-14	1,550	78.6%	1.2%	6.3%	1.2%	3.2%	9.4%
Jul-14	1,659	79.6%	1.5%	6.7%	0.4%	4.2%	7.6%
Aug-14	1,395	72.2%	1.6%	10.8%	0.3%	4.9%	10.3%
Sep-14	1,597	49.4%	1.5%	7.6%	0.3%	4.5%	36.8%
Oct-14	1,634	68.2%	1.9%	10.0%	1.2%	4.6%	14.1%
Nov-14	1,311	66.4%	0.9%	14.3%	2.4%	3.9%	12.1%
Dec-14	1,785	71.1%	1.4%	8.8%	2.9%	4.8%	11.0%
CY 2014	18,519	70.1%	1.3%	8.6%	1.5%	4.6%	14.0%
<b>2015</b>							
Jan-15	1,430	74.4%	1.6%	8.7%	1.8%	3.8%	9.7%
Feb-15	1,538	76.5%	0.8%	8.1%	1.8%	4.7%	8.2%
Mar-15	1,798	74.6%	0.9%	7.3%	1.6%	4.8%	10.8%
Apr-15	1,719	78.2%	1.3%	7.2%	0.6%	3.5%	9.1%
May-15	1,561	77.2%	1.0%	5.1%	1.5%	4.5%	10.8%
Jun-15	1,716	77.4%	1.1%	7.7%	1.2%	3.5%	9.1%
Jul-15	1,511	79.6%	0.9%	7.2%	0.3%	3.8%	8.2%

\*Other Community Sources includes the Department of Homeless Services, Family Court, FAP, Hospitals and Medical facilities, the NYC Housing Authority, PINS/DAS, Probation, and Sponsor Agencies.