

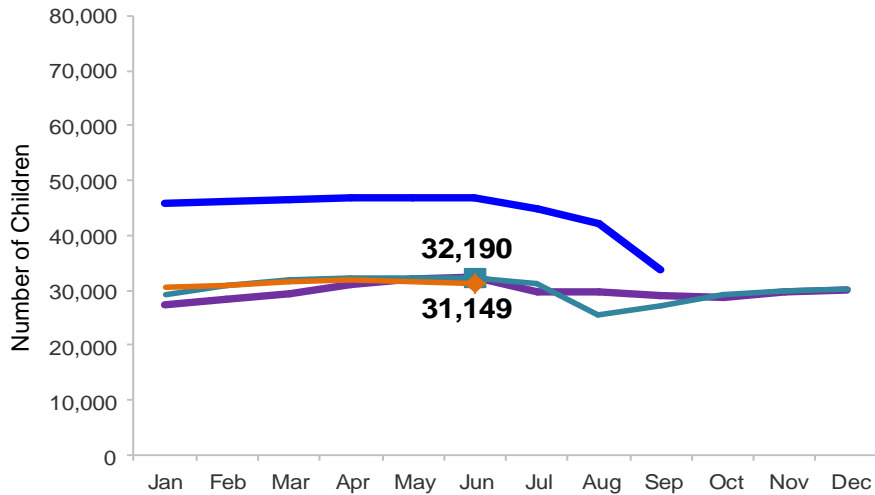


Flash

July 2015

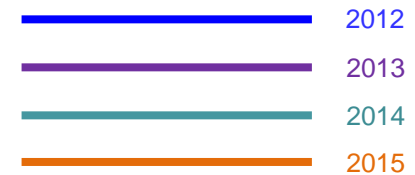
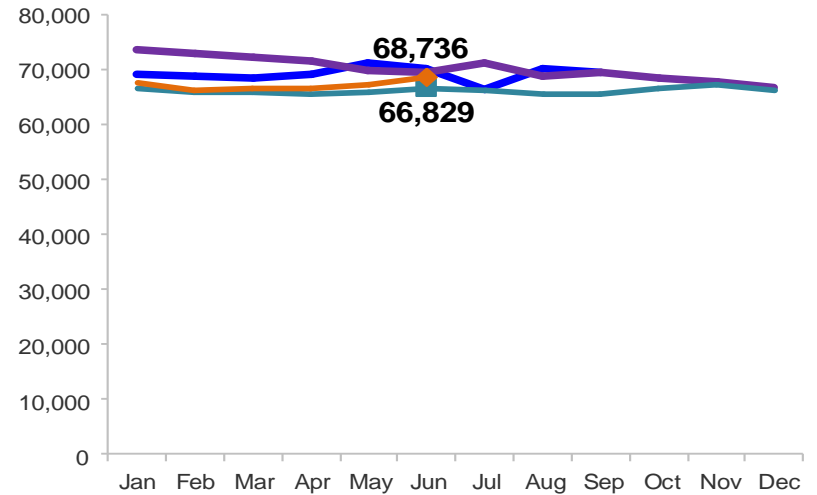
Children Enrolled in Contracted EarlyLearn Programs

January 2012 – June 2015 (End of Month)



Children Using Vouchers for Child Care

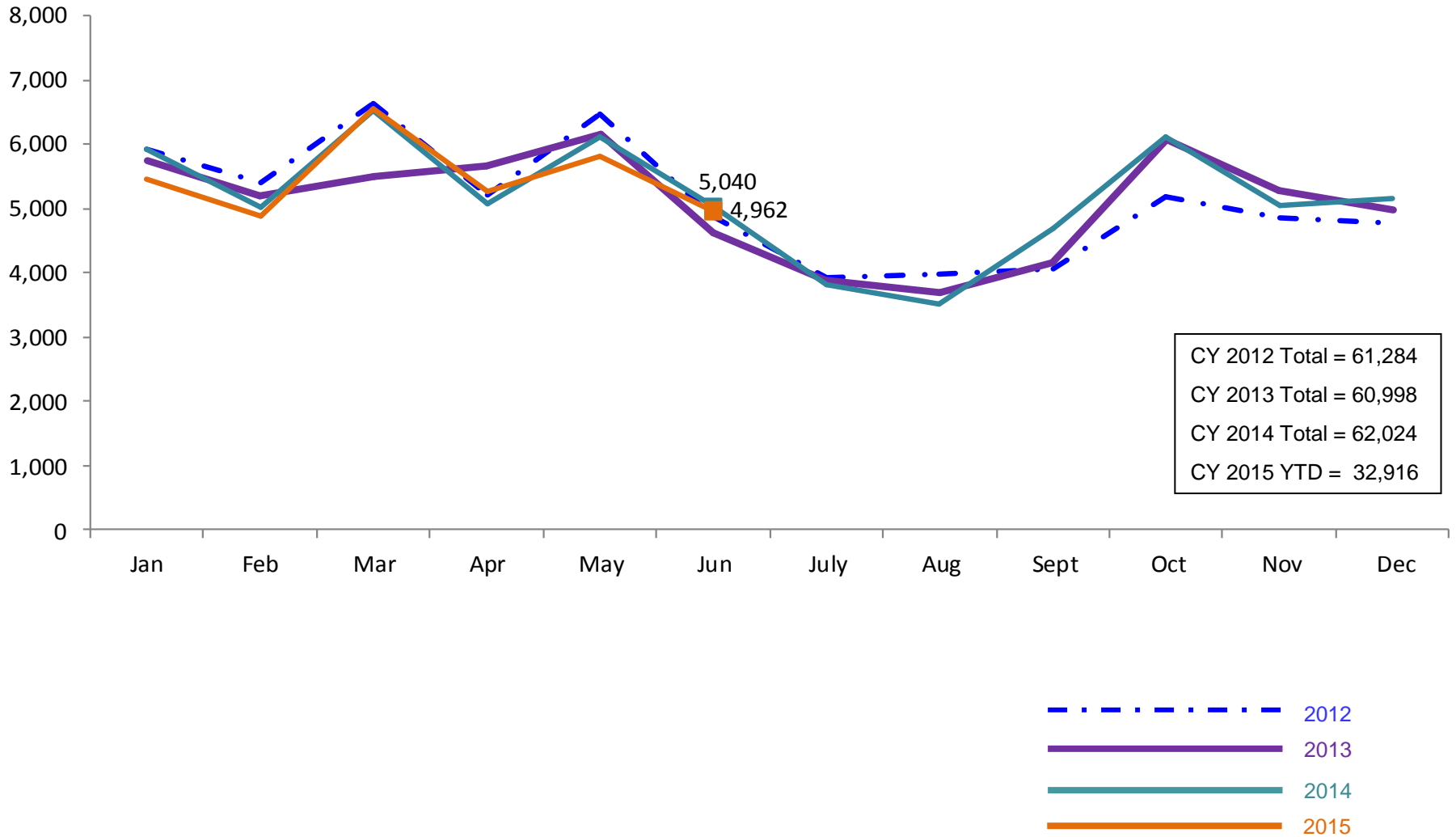
January 2012 – June 2015 (End of Month)



Note: Beginning October 1, 2012 ACS converted its early care and education system to a new model, EarlyLearn NYC. Enrollment data for the transitional months of October – December 2012 are not available because contractors were in the midst of implementing the data collection systems.

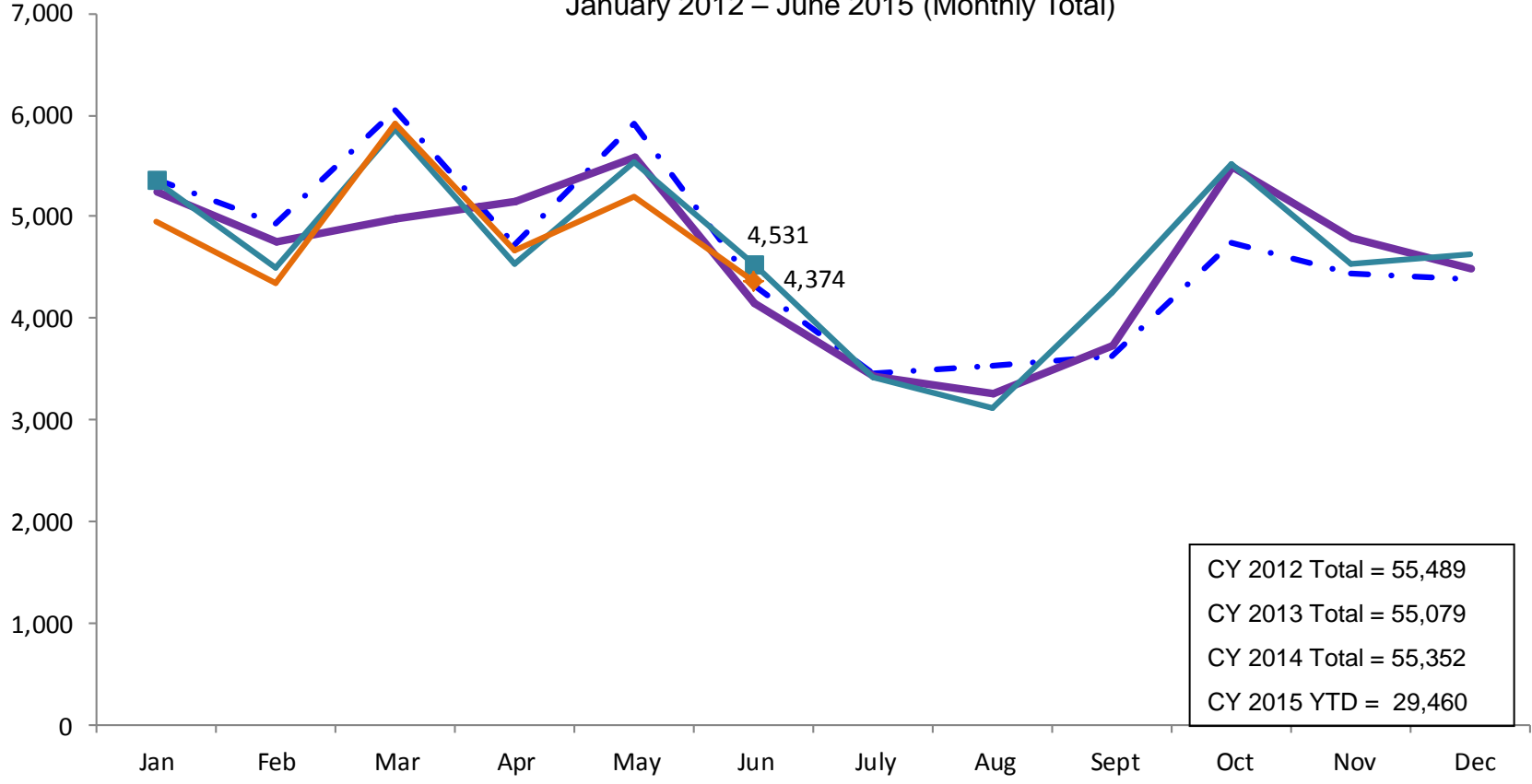
SCR Intakes

January 2012 – June 2015 (Monthly Total)

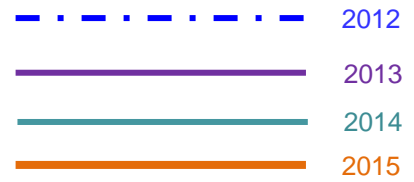


SCR Consolidated Investigations

January 2012 – June 2015 (Monthly Total)

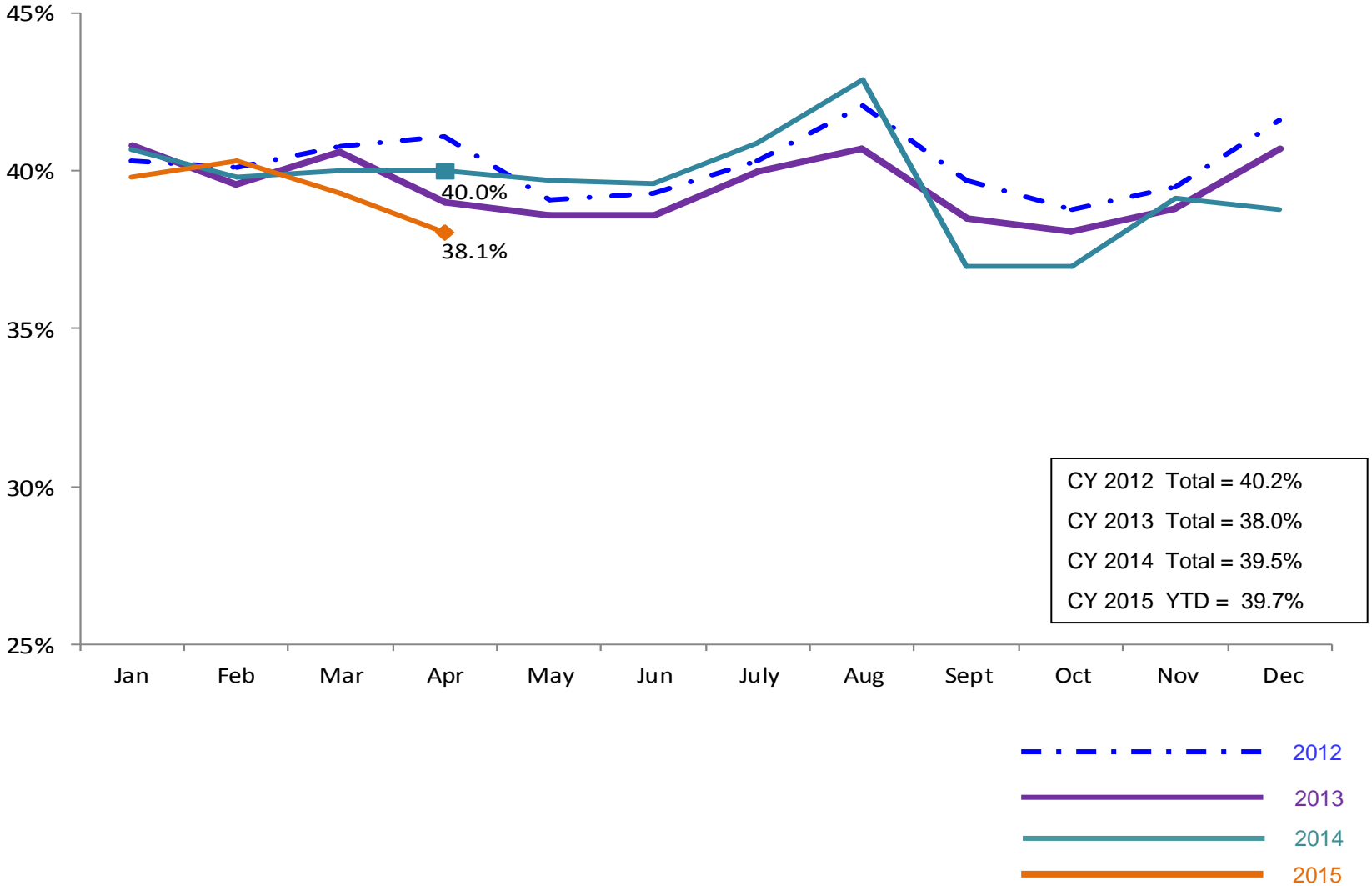


CY 2012 Total = 55,489
CY 2013 Total = 55,079
CY 2014 Total = 55,352
CY 2015 YTD = 29,460



SCR Investigation Indication Rate

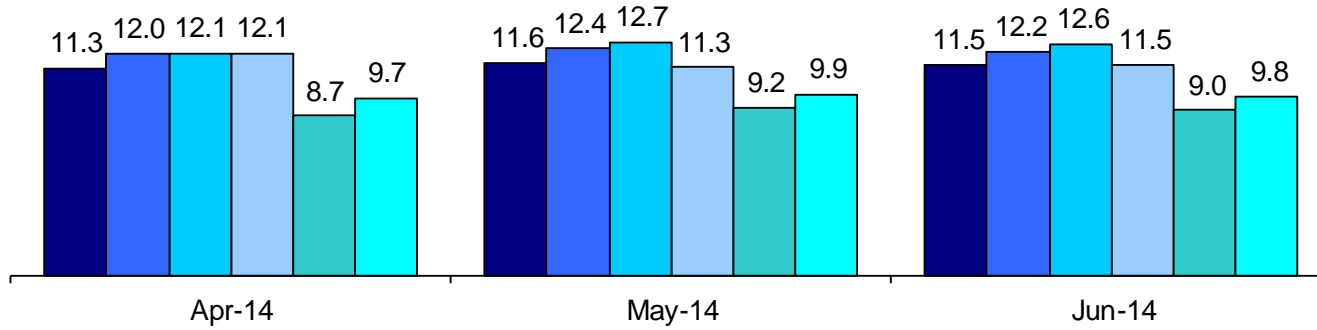
January 2012 – April 2015



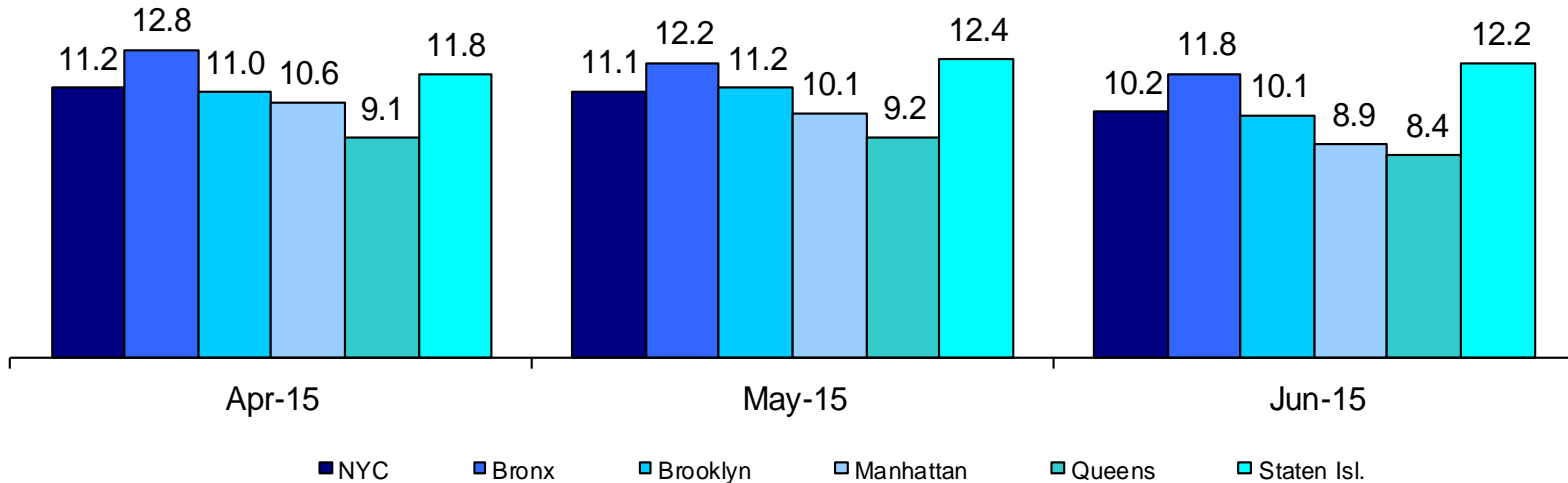
Average P/D Combined Caseload*

April 2014 – June 2014 & April 2015 – June 2015

2014



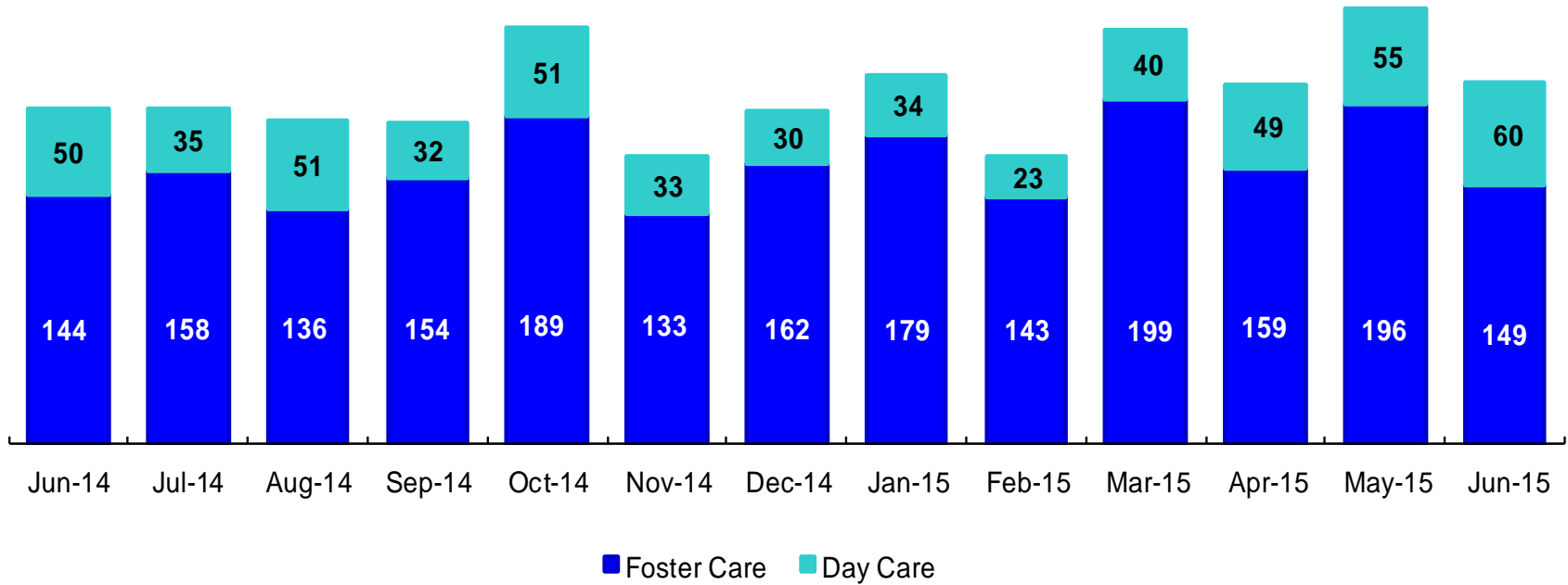
2015



* Caseloads are of protective/diagnostic caseworkers only and exclude the caseloads carried by Level I and Level II Supervisors.

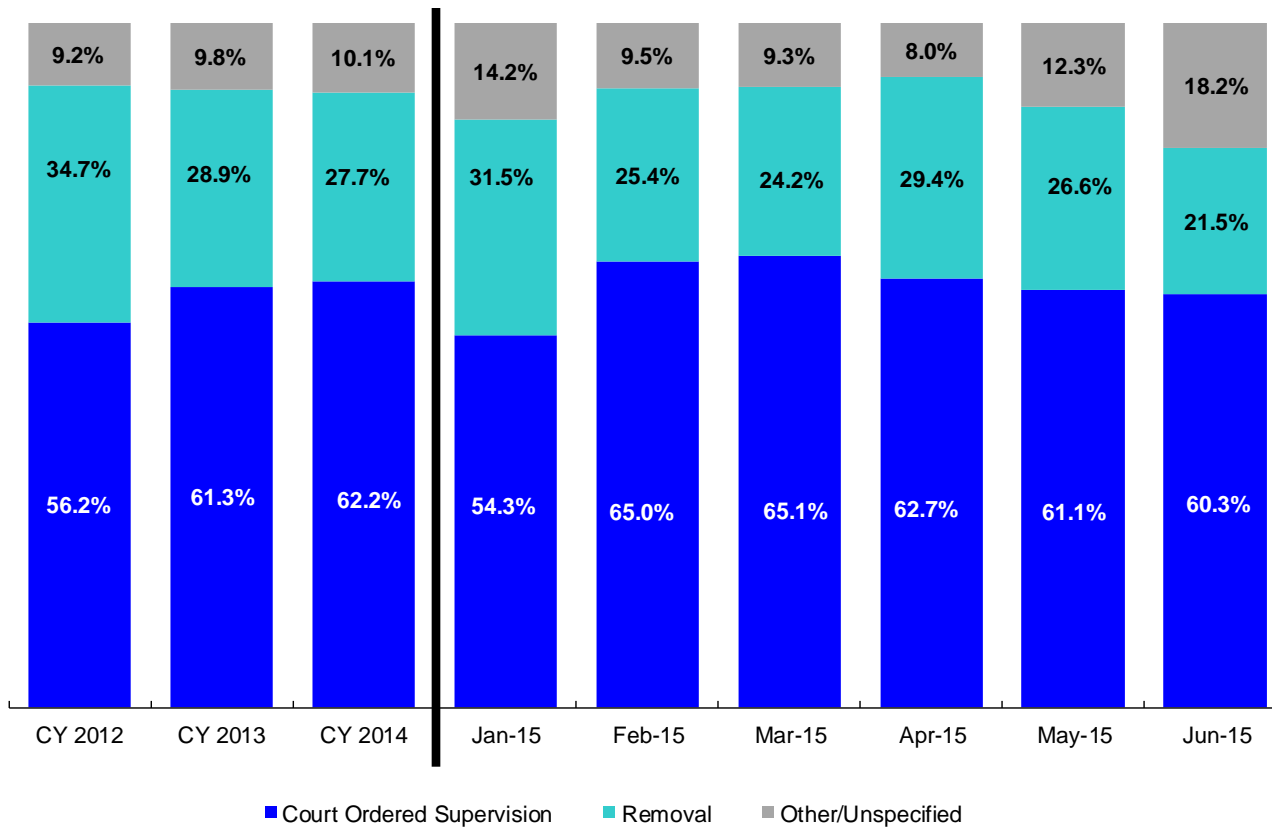
OSI Investigations by Program

June 2014 – June 2015



	Jun 2014	July 2014	Aug 2014	Sep 2014	Oct 2014	Nov 2014	Dec 2014	Jan 2015	Feb 2015	Mar 2015	Apr 2015	May 2015	Jun 2015
Number of Investigations	194	193	187	186	240	166	192	213	166	239	208	251	209

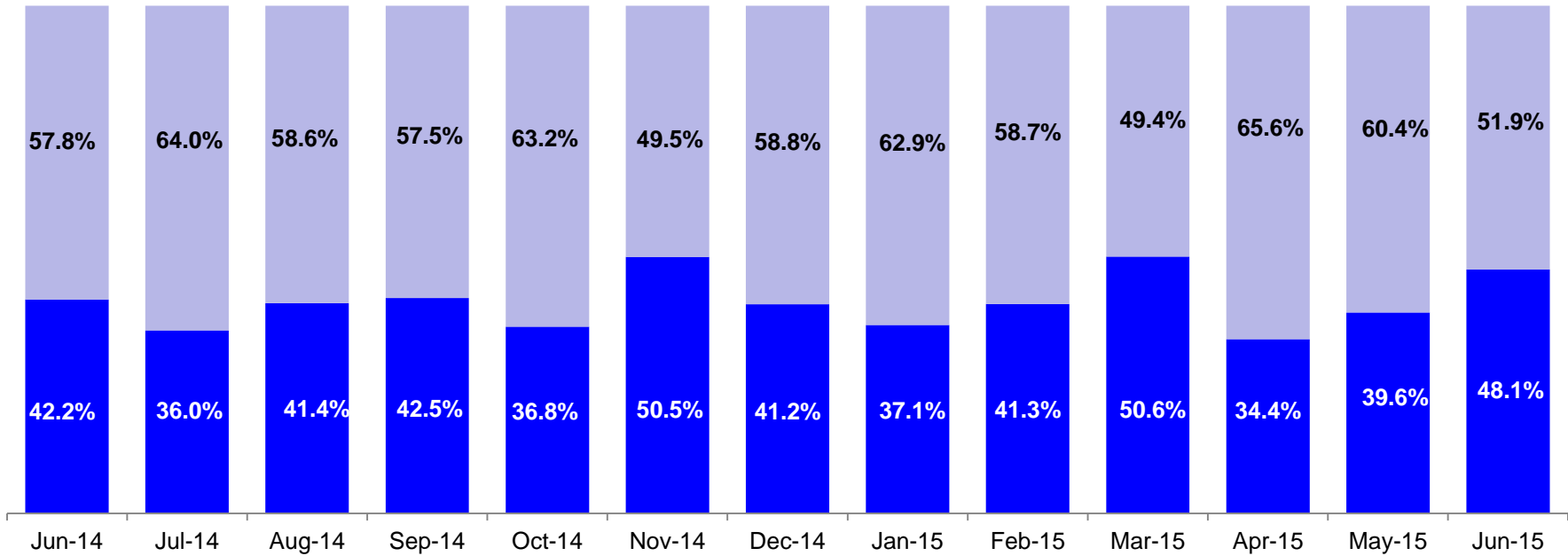
Article 10 Total Filings & Filing Outcomes, CY 2012 – June 2015



	CY 2012	CY 2013	CY 2014	Jan 2015	Feb 2015	Mar 2015	Apr 2015	May 2015	Jun 2015
Art.10 Filings	8,913	9,318	9,900	812	924	1,012	892	940	959

Note: The category “Other/Unspecified” includes released with no supervision, no order issued and no outcome specified. Outcomes of cases heard the next day are not captured in this report

Article 10 Filing Removals, June 2014 – June 2015



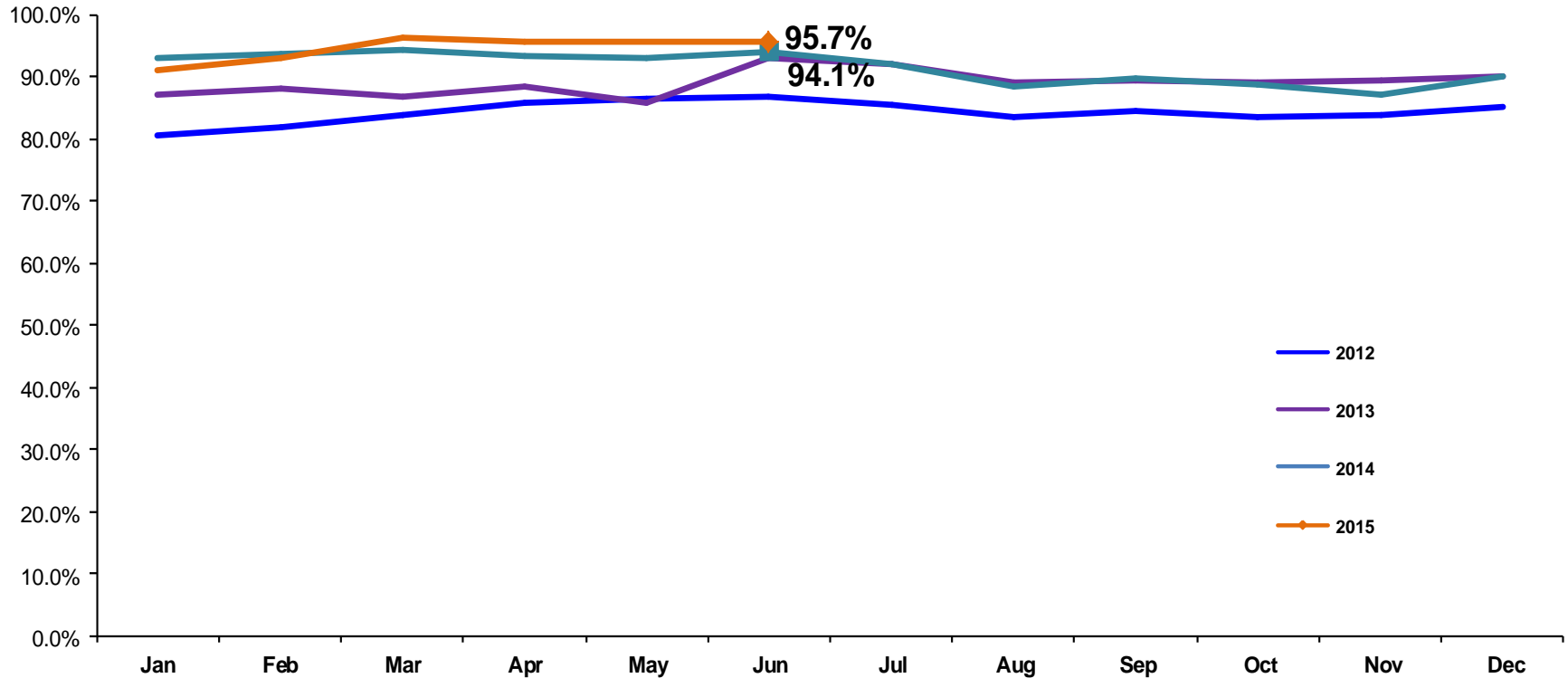
■ Pre-Filing Emergency Removals (court approved at initial hearing) ■ Post-Filing Removals (court ordered at initial hearing)

	Jun 2014	Jul 2014	Aug 2014	Sep 2014	Oct 2014	Nov 2014	Dec 2014	Jan 2015	Feb 2015	Mar 2015	Apr 2015	May 2015	Jun 2015
Number of Removals	249	172	227	179	231	194	262	256	235	245	262	250	206

PPRS Utilization Rate

January 2012 – June 2015 (End of Month)

General Preventive



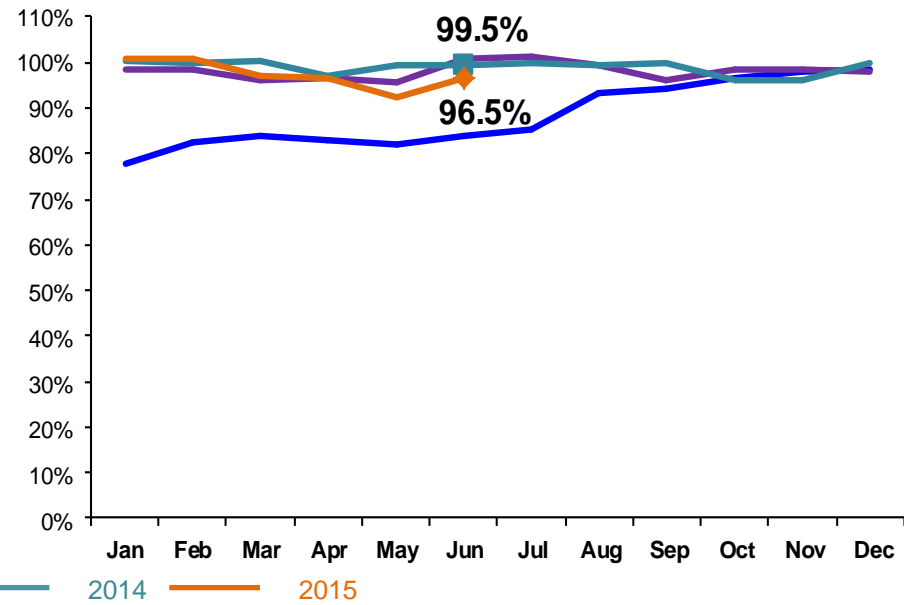
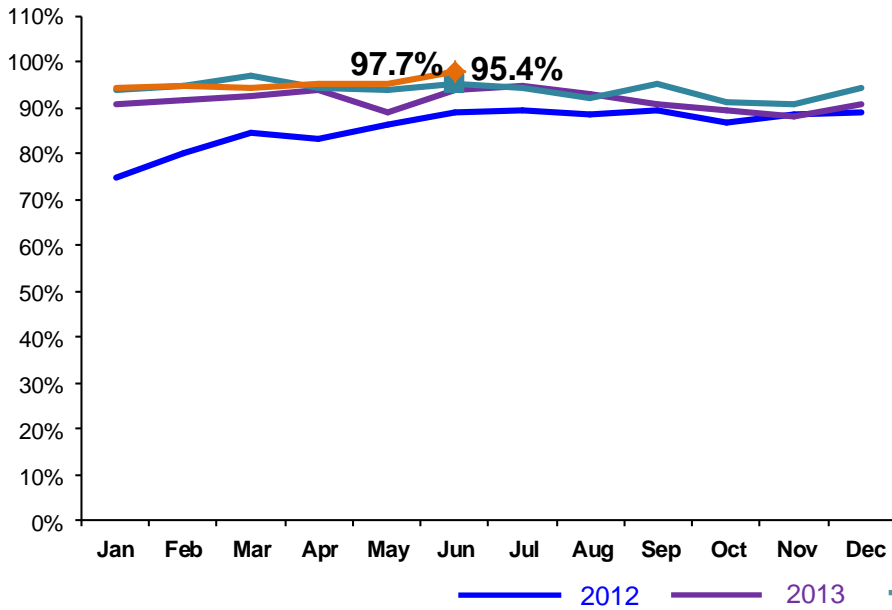
Notes: 1) Beacons programs are included in the GP utilization rates. 2) During June-October 2013 GP programs in the process of converting to EBMs were excluded from the GP utilization statistics.

PPRS Utilization Rate

January 2012 – June 2015 (End of Month)

Family Treatment Rehabilitation

Medically Fragile

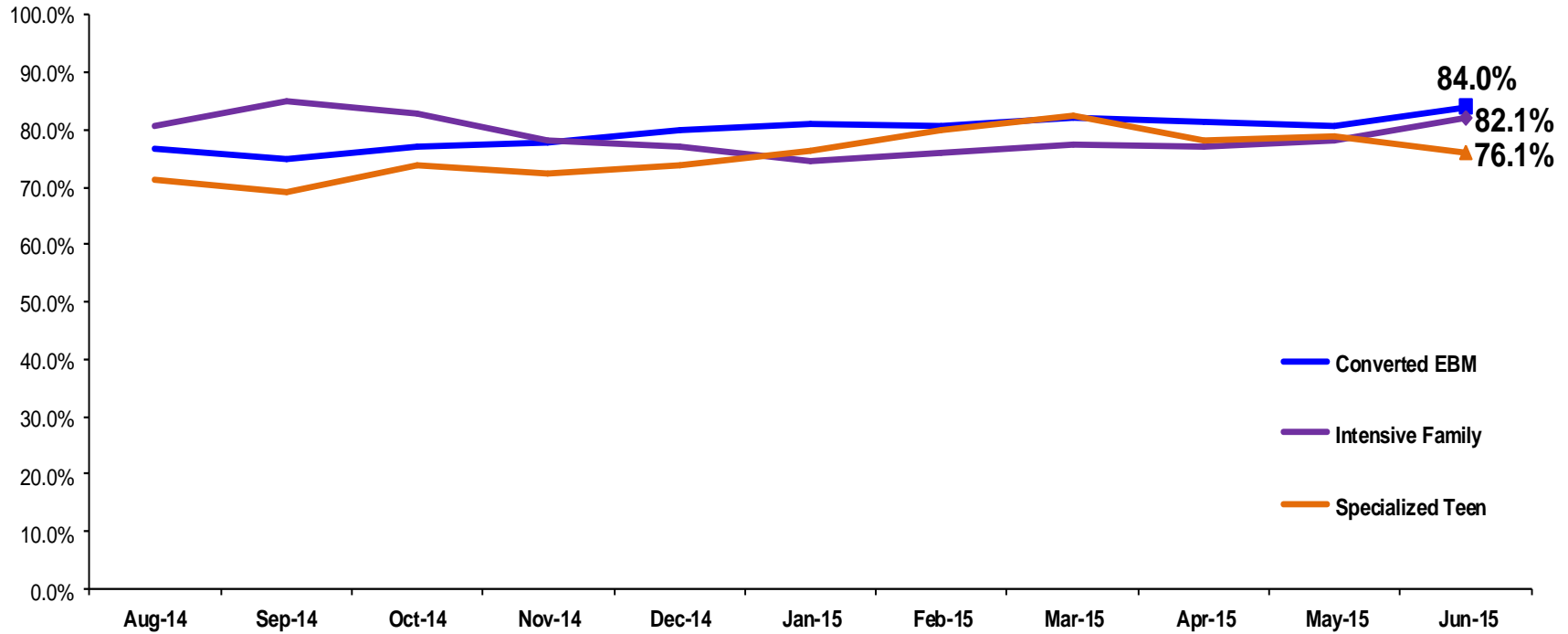


Note: During June -October 2013 FTR programs in the process of converting to EBMs were excluded from the FTR utilization statistics.

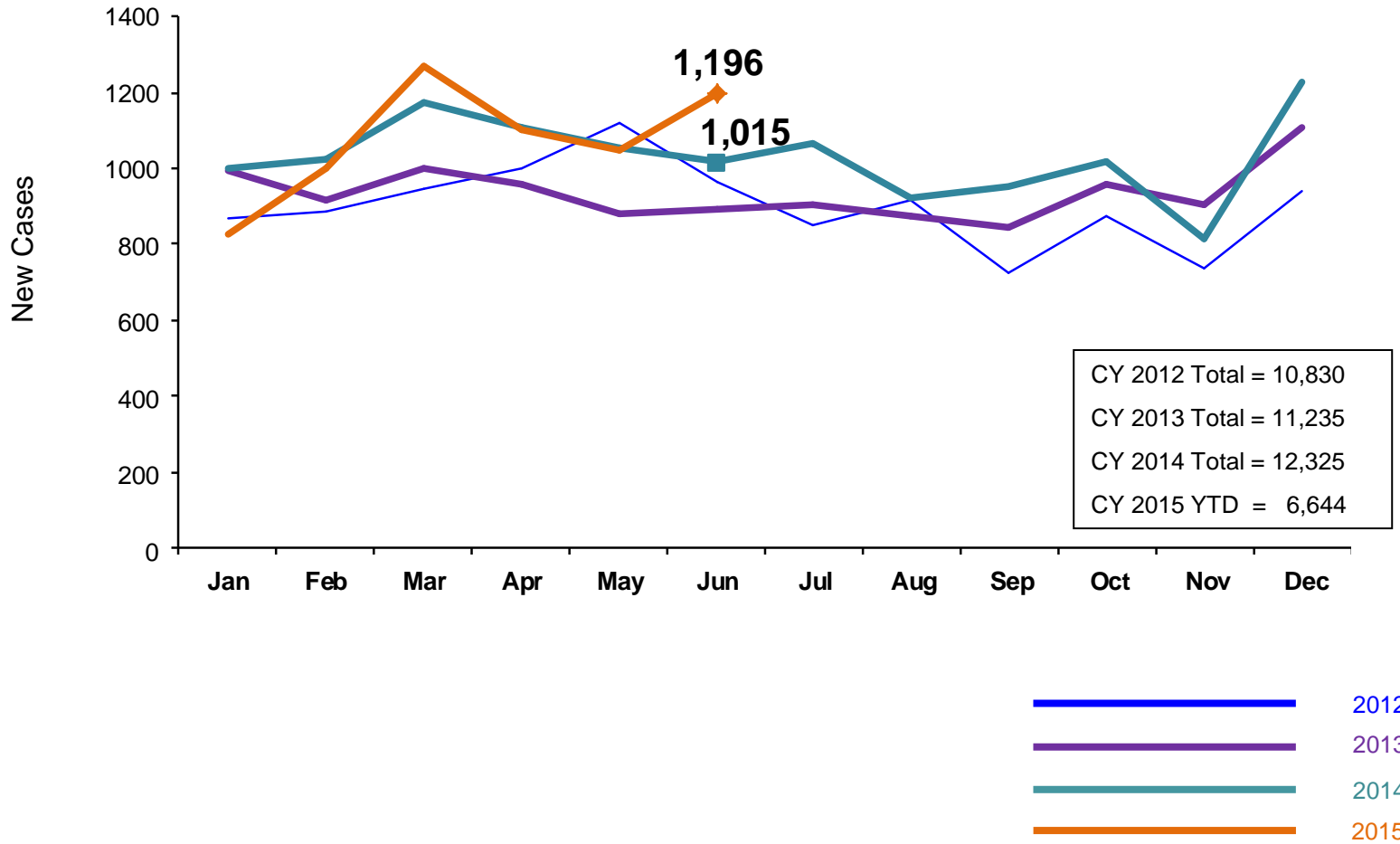
PPRS Utilization Rate

August 2014 – June 2015 (End of Month)

Converted EBM, Intensive Family and Specialized Teen



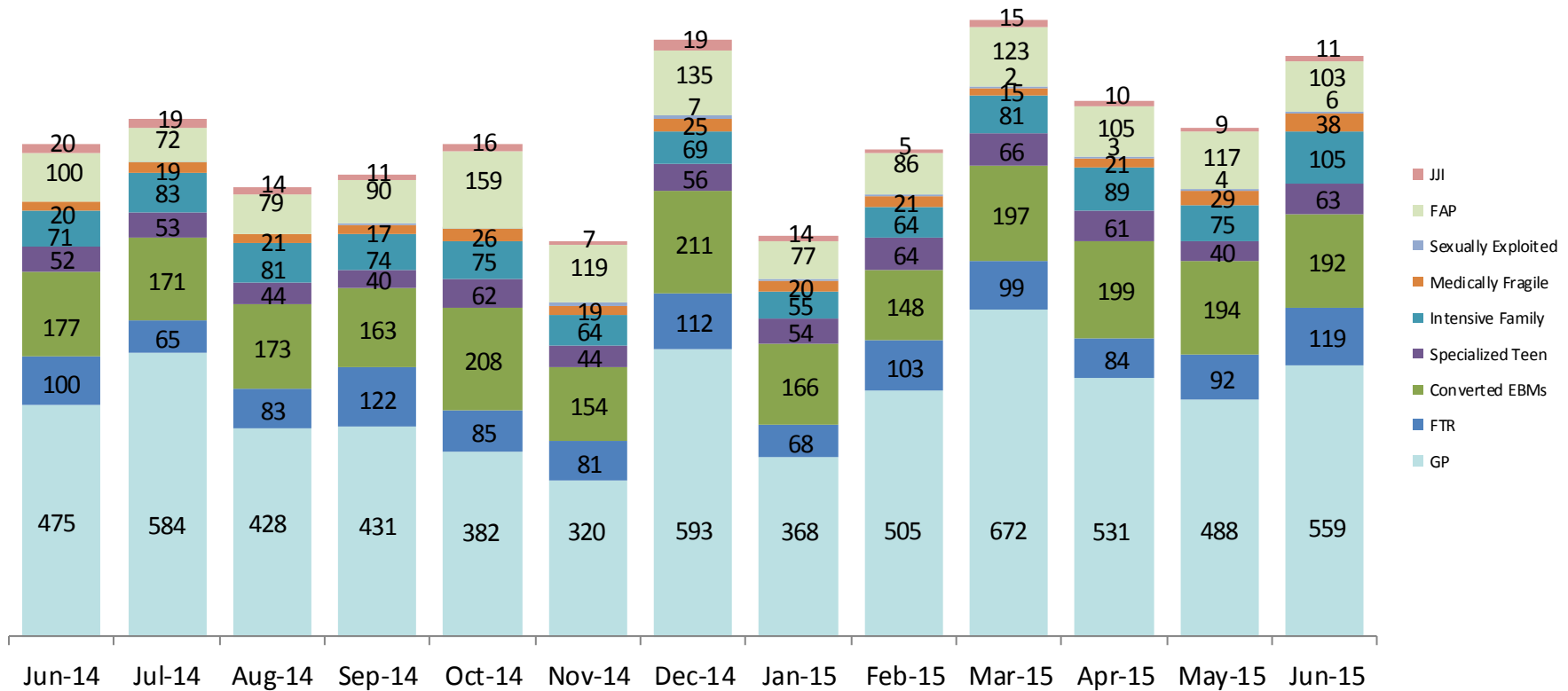
New Preventive Cases*
January 2012 – June 2015



*Notes: 1) New preventive cases do not include cases transferred from one preventive program to another. 2) See Pages 36 and 37 of the Appendix for supporting data.

New Preventive Cases* by Program Type

June 2014 – June 2015

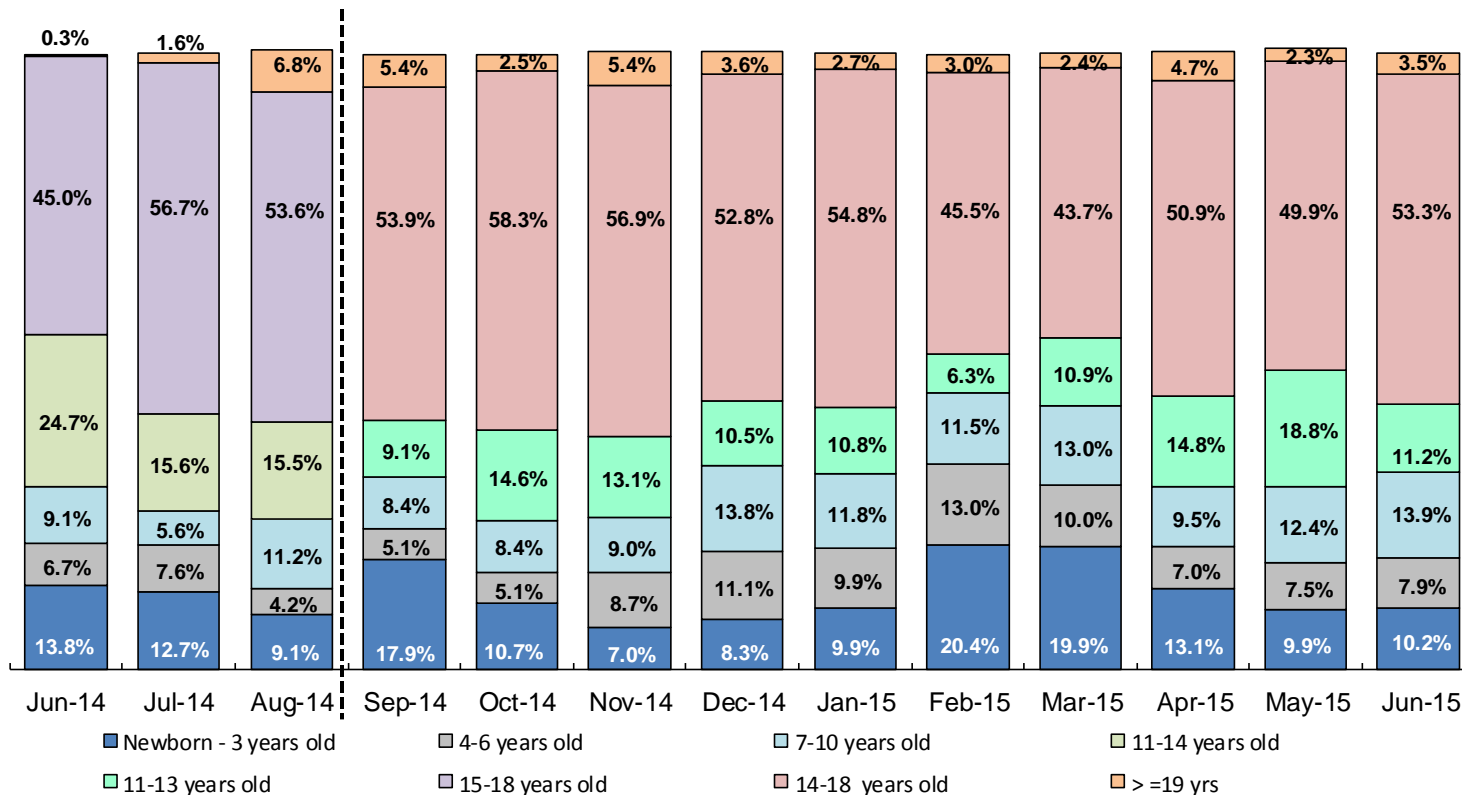


	Jun 2014	Jul 2014	Aug 2014	Sep 2014	Oct 2014	Nov 2014	Dec 2014	Jan 2015	Feb 2015	Mar 2015	Apr 2015	May 2015	Jun 2015
Number of New Preventive Cases	1,015	1,067	923	950	1,015	812	1,227	826	1,001	1,270	1,103	1,048	1,196

Note: New preventive cases do not include cases transferred from one preventive program to another.

Average Pre-Placement Residential Monthly Population

June 2014 – June 2015



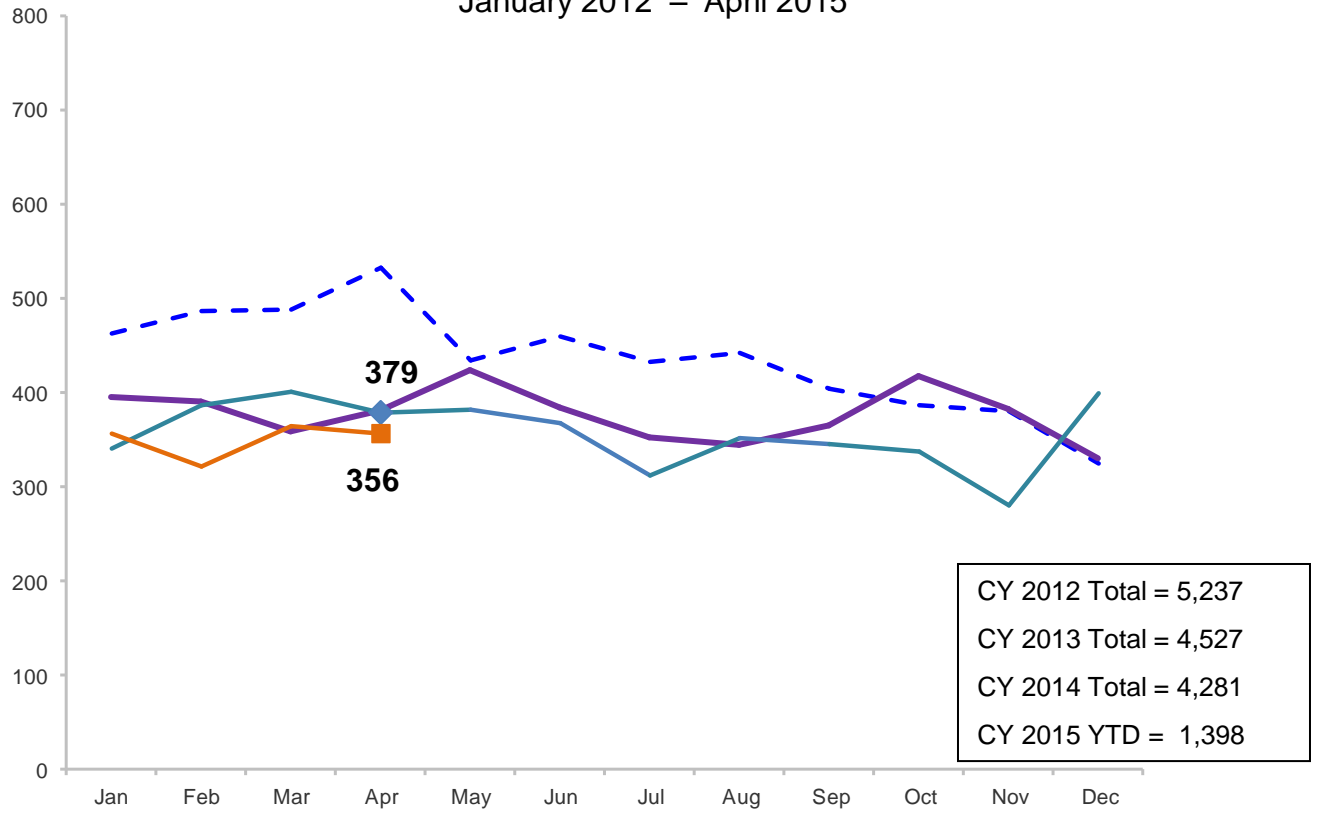
	Jun 2014	Jul 2014	Aug 2014	Sep 2014	Oct 2014	Nov 2014	Dec 2014	Jan 2015	Feb 2015	Mar 2015	Apr 2015	May 2015	Jun 2015
Average Number of Children	40	32	34	37	45	48	44	51	39	50	52	60	50

*Beginning in December 2014 the pre-placement residential population includes children at the Children’s Center and at the MercyFirst Reception Center.

*Beginning on September 6, 2014, the age categories reported changed from 11-14 to 11-13 year olds and 15-18 to 14-18 year olds.

Total Monthly Placements

January 2012 – April 2015

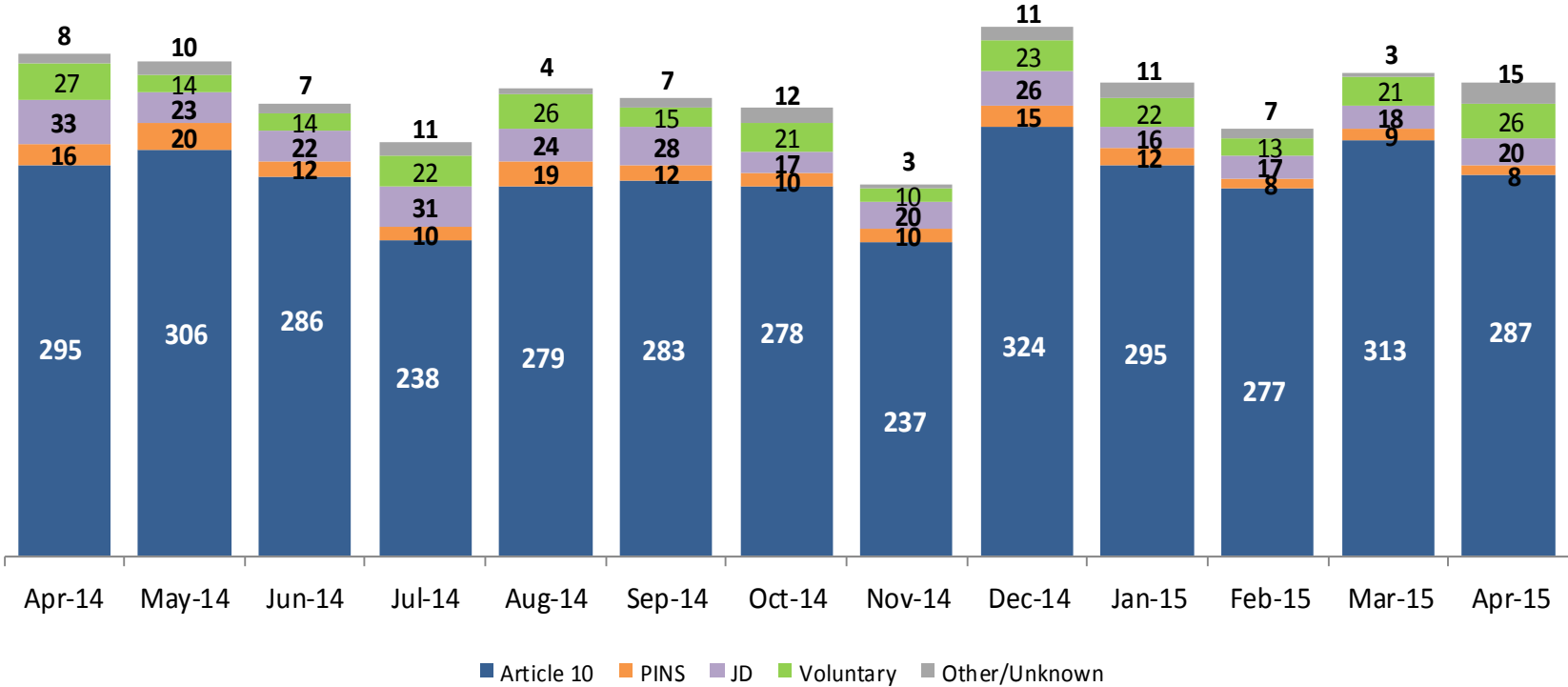


CY 2012 Total = 5,237
CY 2013 Total = 4,527
CY 2014 Total = 4,281
CY 2015 YTD = 1,398

- 2012
- 2013
- 2014
- 2015

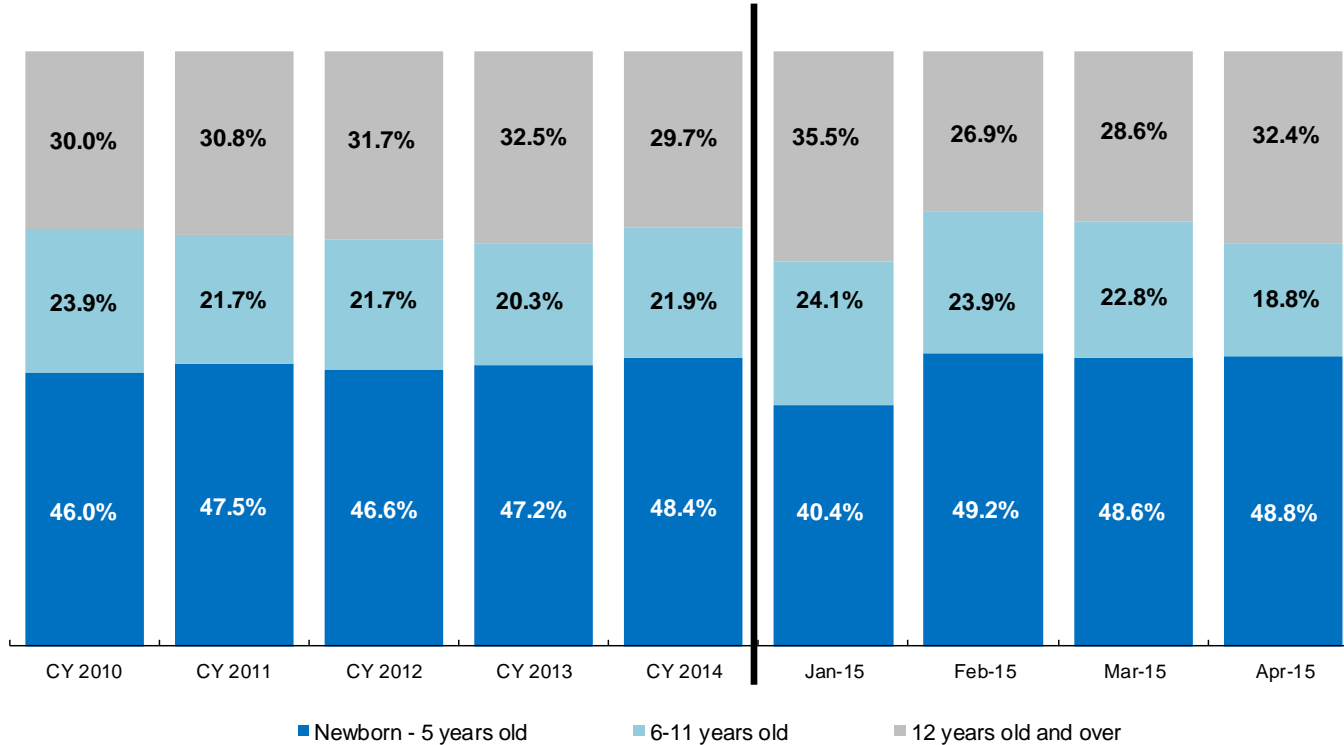
Reason for Initial Placements into Foster Care

April 2014 – April 2015



	Apr 2014	May 2014	Jun 2014	Jul 2014	Aug 2014	Sep 2014	Oct 2014	Nov 2014	Dec 2014	Jan 2015	Feb 2015	Mar 2015	Apr 2015
Number of Placements	379	382	367	312	352	345	338	280	399	356	322	364	356

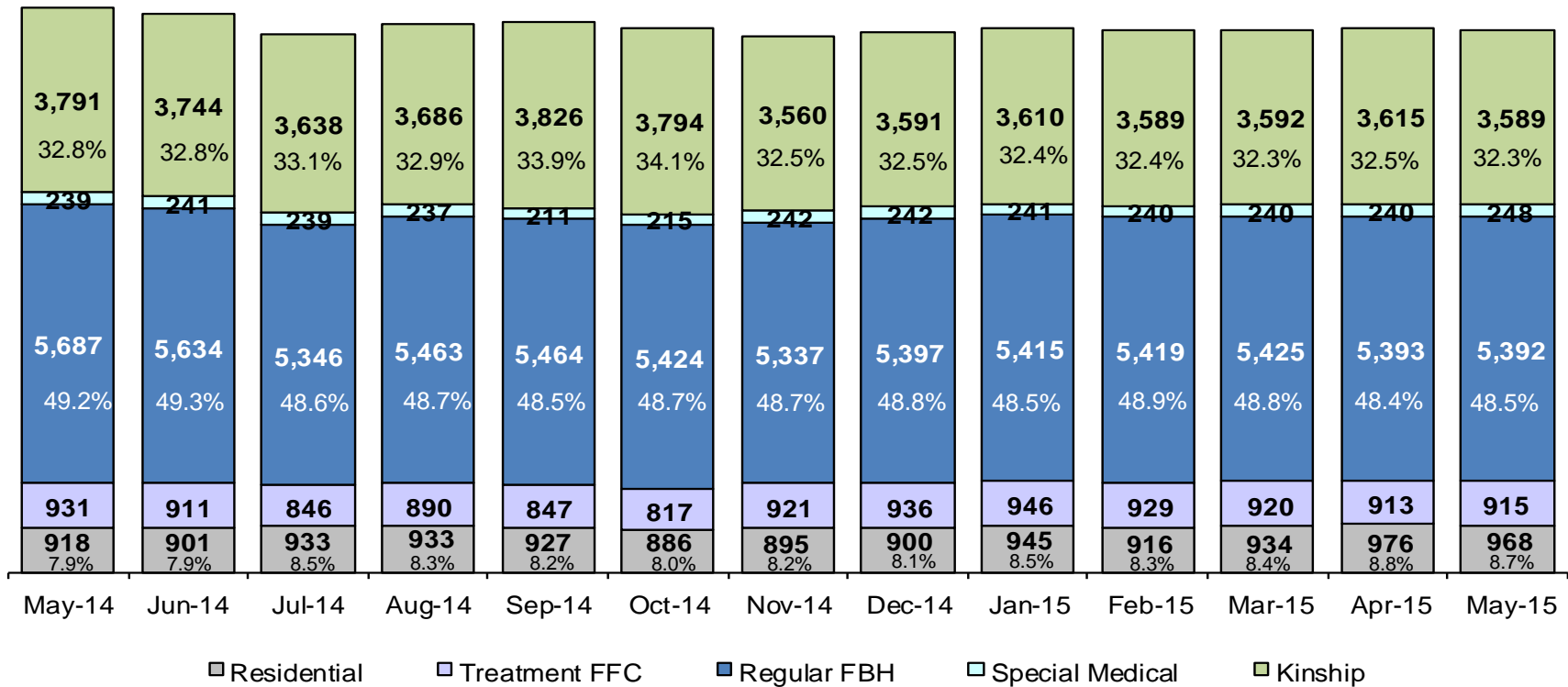
Placements* by Age CY 2012 - Apr 2015



	CY 2012	CY 2013	CY 2014	Jan 2015	Feb 2015	Mar 2015	Apr 2015
Placements	4,823	4,170	3,983	344	305	346	336

*Excludes JD placements.

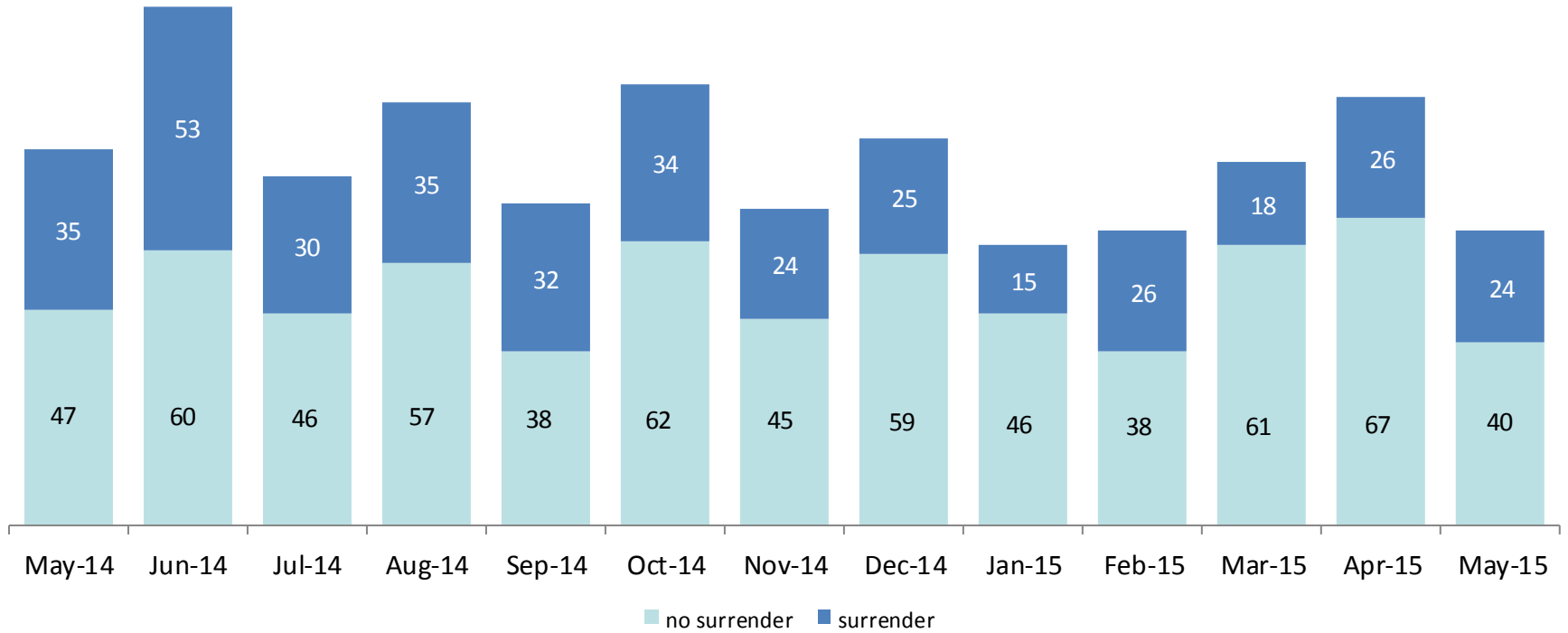
Children in Foster Care* May 2014 – May 2015 (end of month)



	May 2014	Jun 2014	Jul 2014	Aug 2014	Sep 2014	Oct 2014	Nov 2014	Dec 2014	Jan 2015	Feb 2015	Mar 2015	Apr 2015	May 2015
Number in Foster Care	11,566	11,431	11,002	11,209	11,275	11,136	10,955	11,066	11,157	11,093	11,111	11,137	11,112

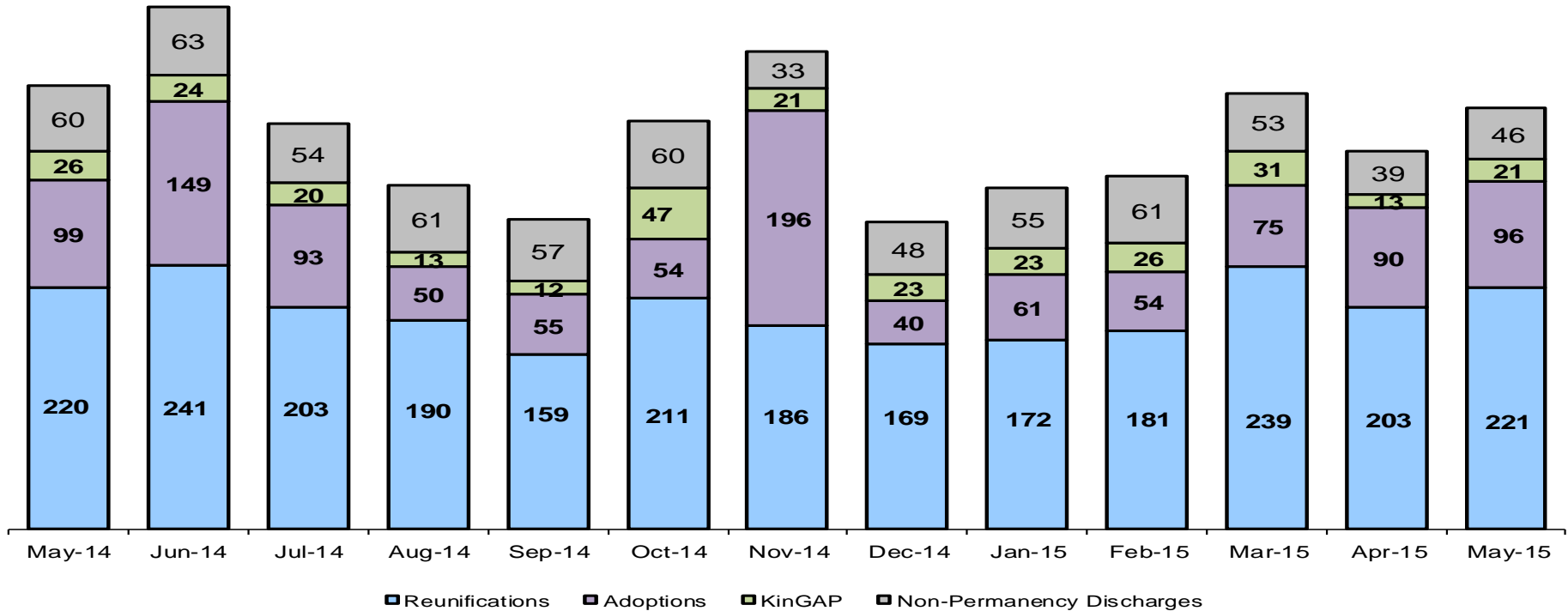
*Excludes JD placements and includes approximately 400 young children who are living in foster homes or residential care facilities with their mothers who are in foster care (8D children). 19

Children Freed for Adoption, Surrender by at Least One Parent May 2014 – May 2015



	May 2014	Jun 2014	Jul 2014	Aug 2014	Sep 2014	Oct 2014	Nov 2014	Dec 2014	Jan 2015	Feb 2015	Mar 2015	Apr 2015	May 2015
Number Freed for Adoption	82	113	76	92	70	96	69	84	61	64	79	93	64

Permanency and Non-Permanency* Discharges from Foster Care** May 2014 – May 2015

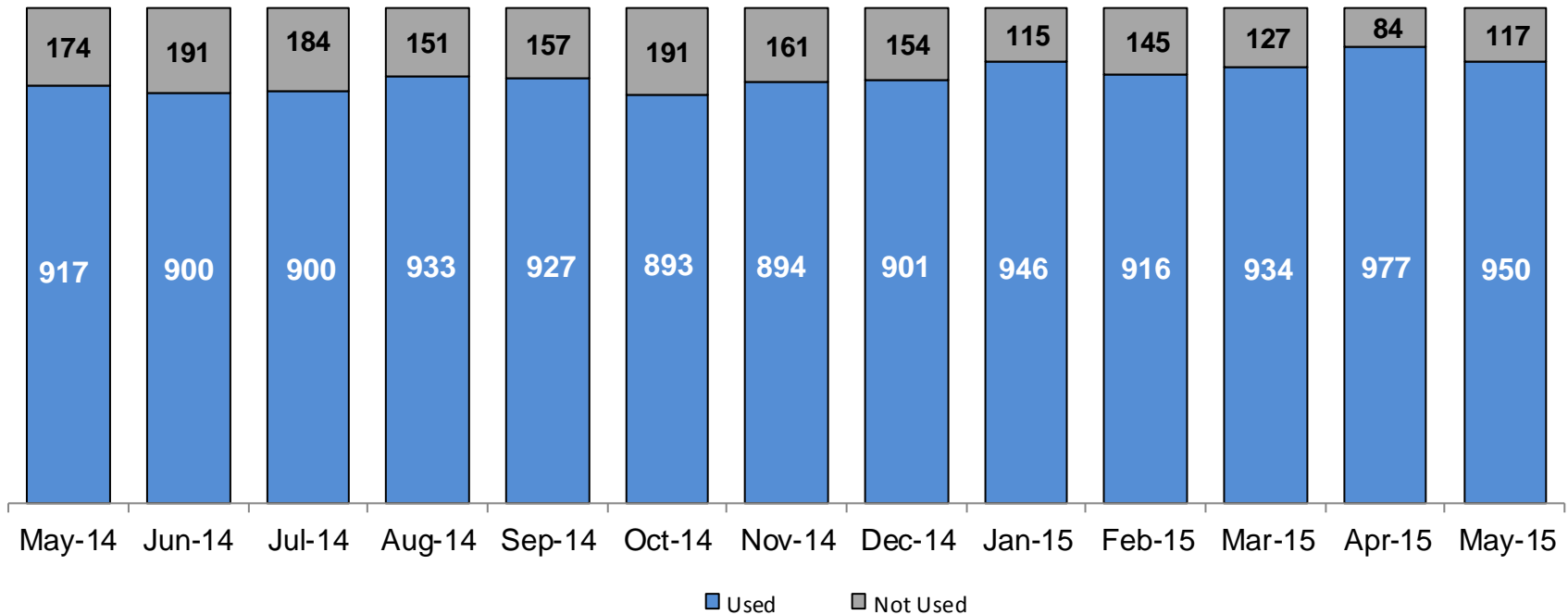


	May 2014	Jun 2014	Jul 2014	Aug 2014	Sep 2014	Oct 2014	Nov 2014	Dec 2014	Jan 2015	Feb 2015	Mar 2015	Apr 2015	May 2015
Number of Discharges	405	477	370	314	283	372	436	280	311	322	398	345	384

*Non-permanency discharges include AWOL, APPLA , other discharge destinations such as psychiatric institutions and correctional facilities and discharges with unspecified destinations.

**Excludes discharges of youth who entered care as a JD.

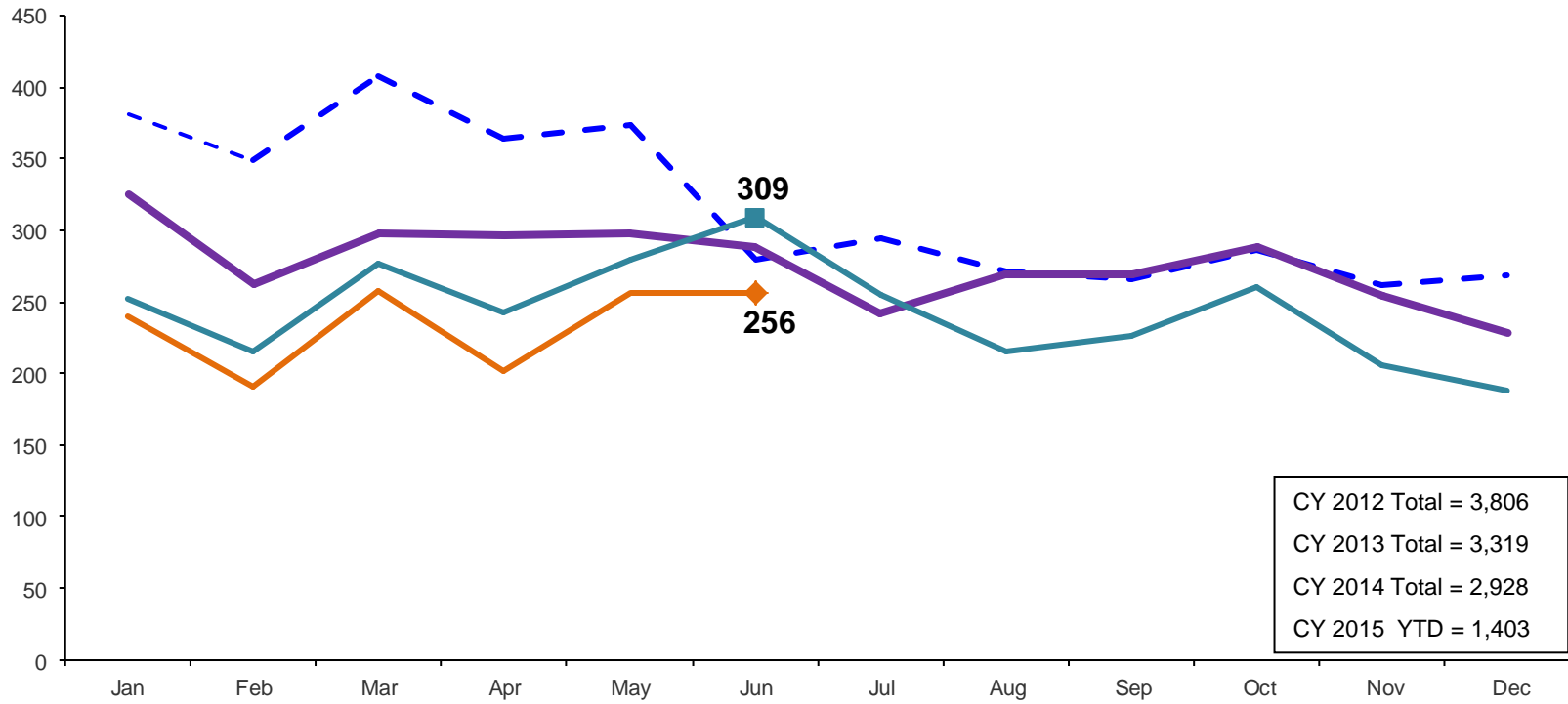
Residential Care Capacity and Utilization, May 2014 – May 2015



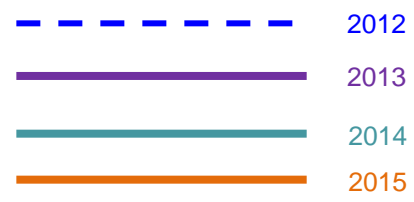
	May 2014	Jun 2014	Jul 2014	Aug 2014	Sep 2014	Oct 2014	Nov 2014	Dec 2014	Jan 2015	Feb 2015	Mar 2015	Apr 2015	May 2015
Capacity	1,091	1,091	1,084	1,084	1,084	1,084	1,055	1,055	1,061	1,061	1,061	1,061	1,067

Total Monthly Admissions to Detention

February 2012 – June 2015 (Monthly Total)

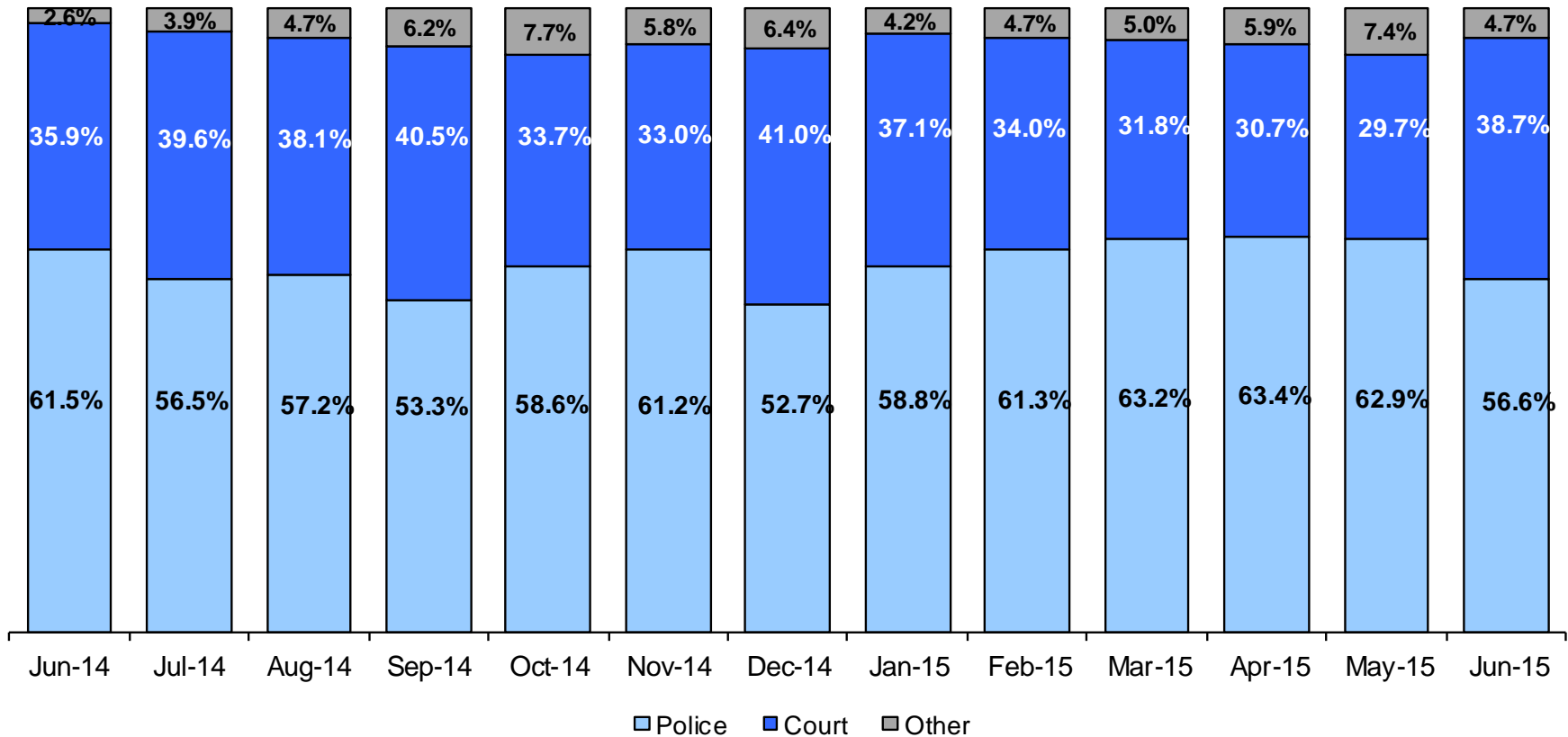


CY 2012 Total = 3,806
CY 2013 Total = 3,319
CY 2014 Total = 2,928
CY 2015 YTD = 1,403



Admit Authority on Admissions

February 2014 – June 2015 (Monthly Total)



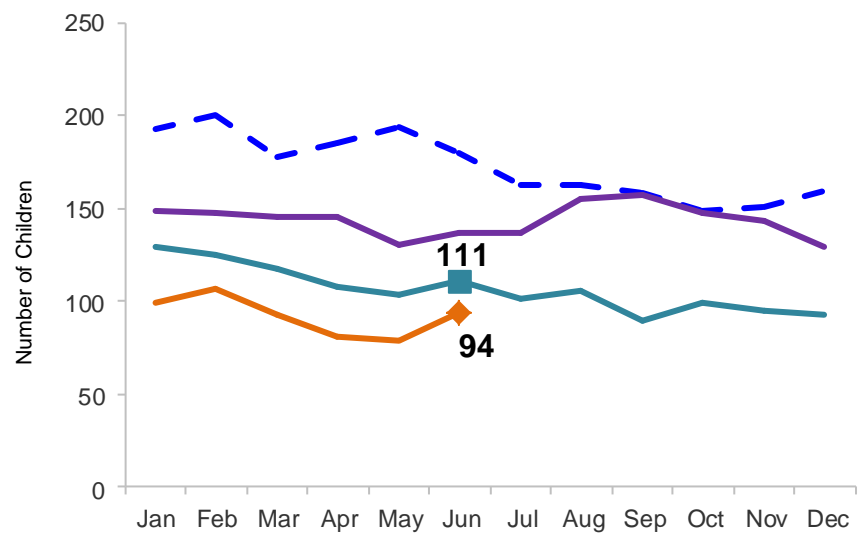
	Jun 2014	Jul 2014	Aug 2014	Sep 2014	Oct 2014	Nov 2014	Dec 2014	Jan 2015	Feb 2015	Mar 2015	Apr 2015	May 2015	Jun 2015
Number of Admissions	309	255	215	227	261	206	188	240	191	258	202	256	256

Note: Other Admit Authority includes the Sheriff Department, Department of Corrections and ACS.

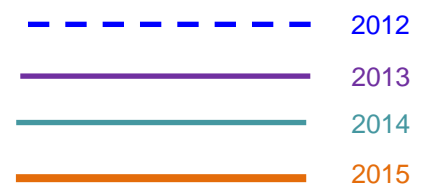
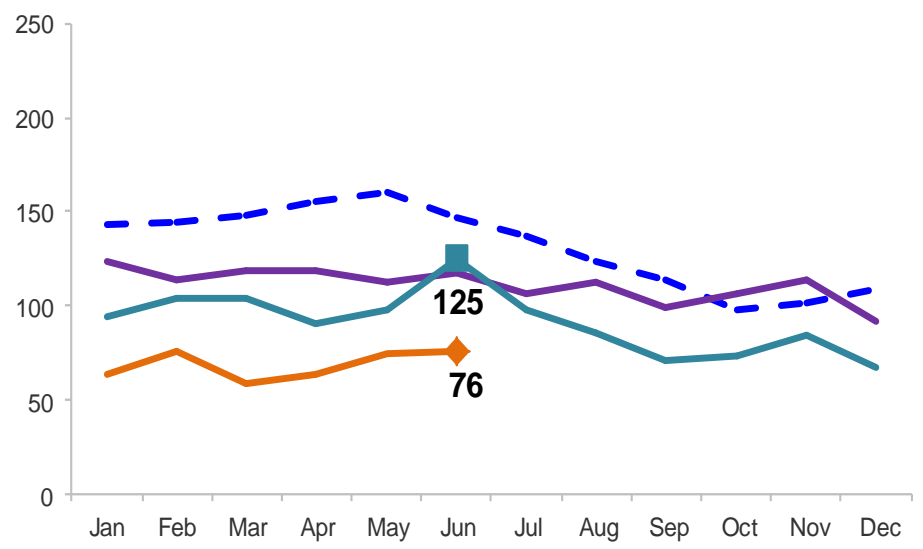
Monthly Average Daily Population

January 2012 – June 2015

Secure Detention

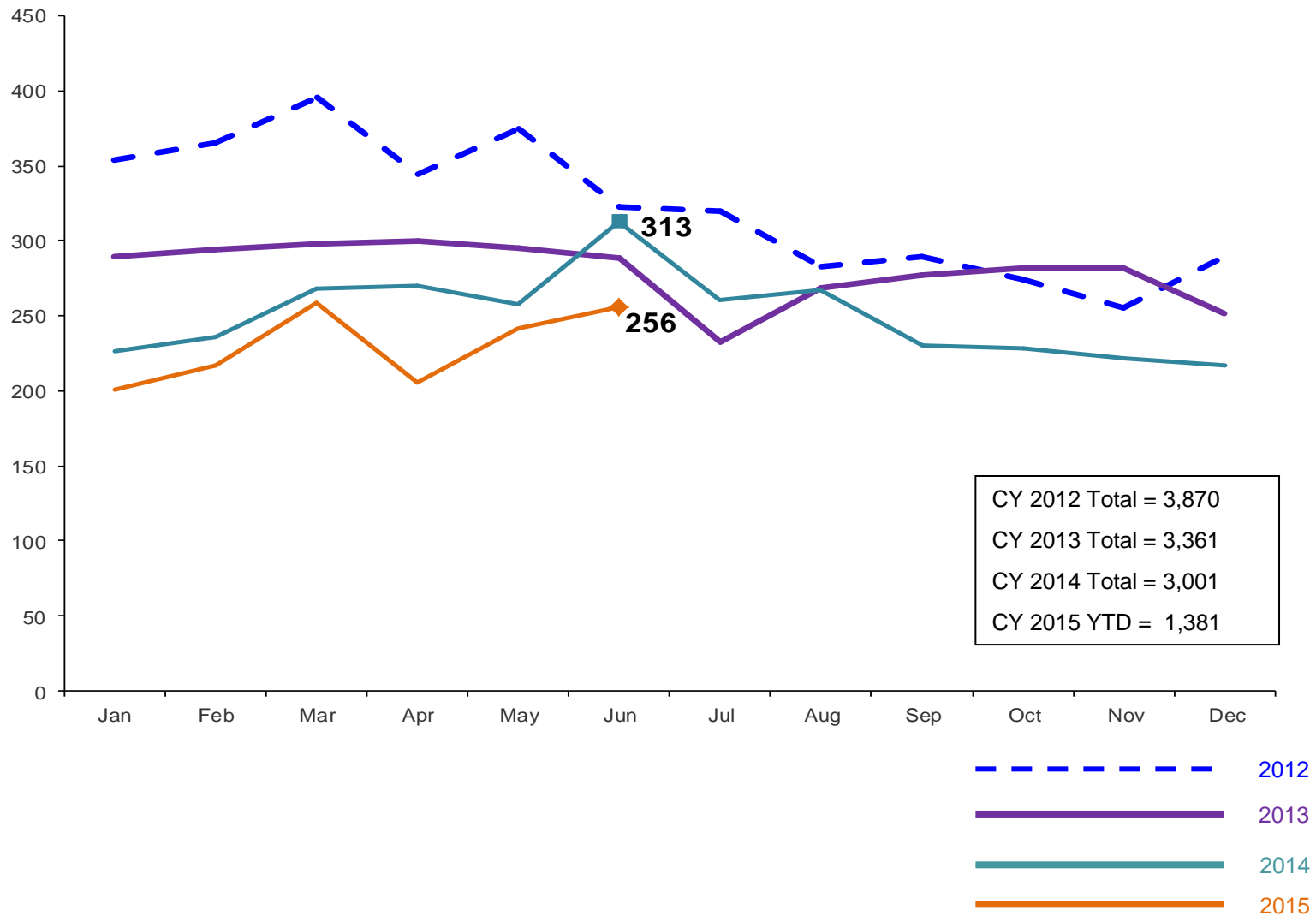


Non-Secure Detention



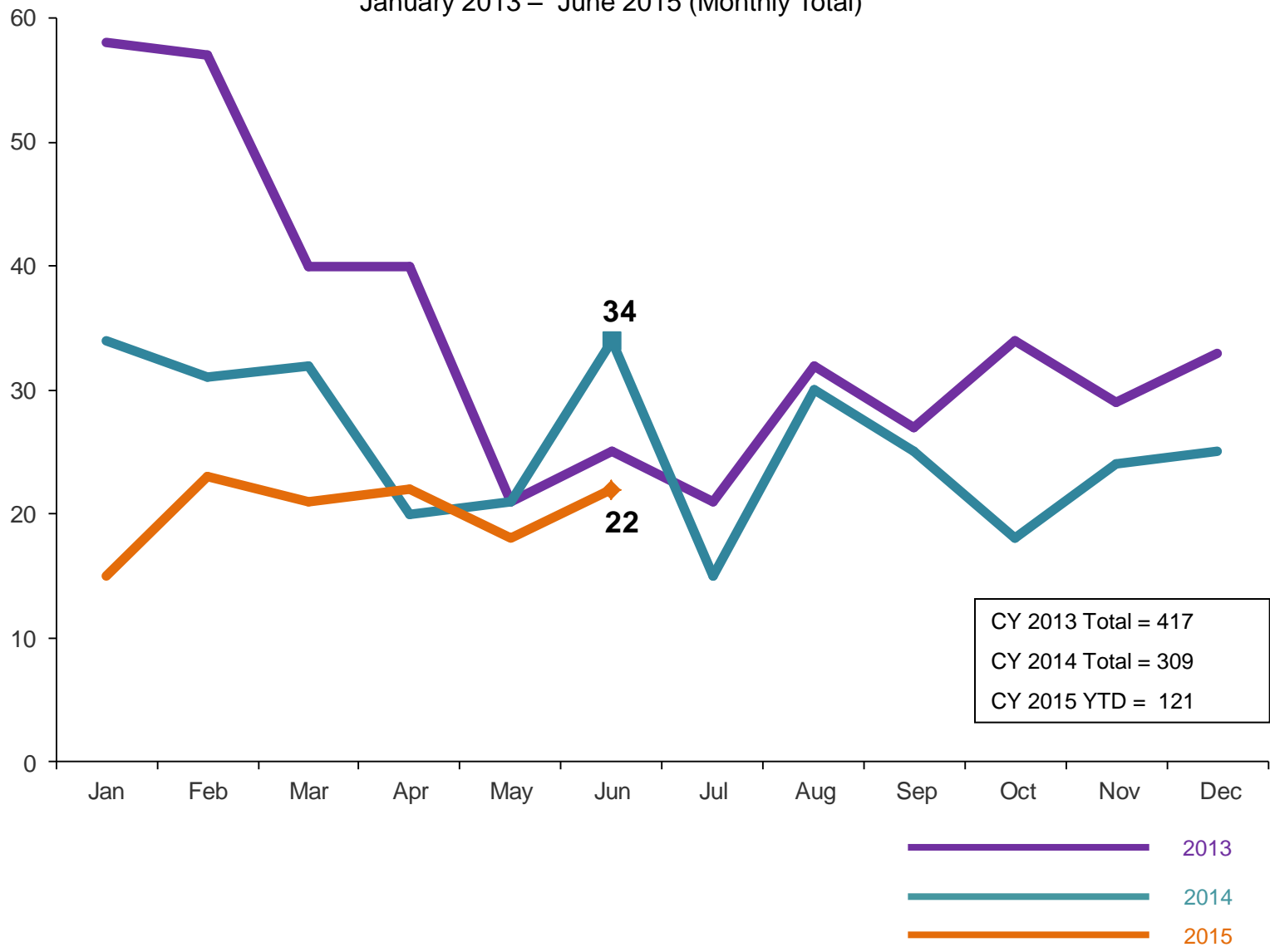
Total Monthly Releases from Detention

January 2012 – June 2015 (Monthly Total)



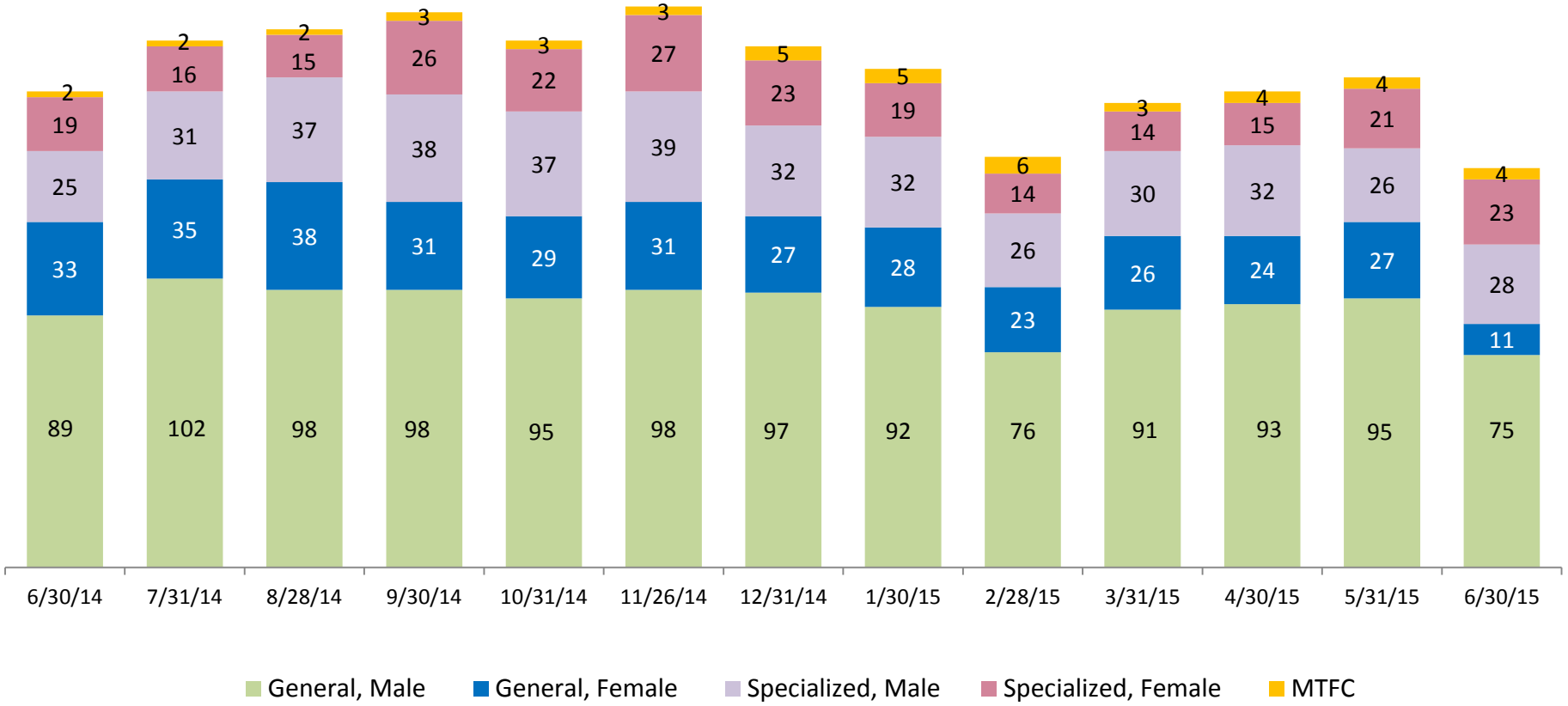
ACS NSP Intakes

January 2013 – June 2015 (Monthly Total)



ACS Non-Secure Placement, in 24 hour Care

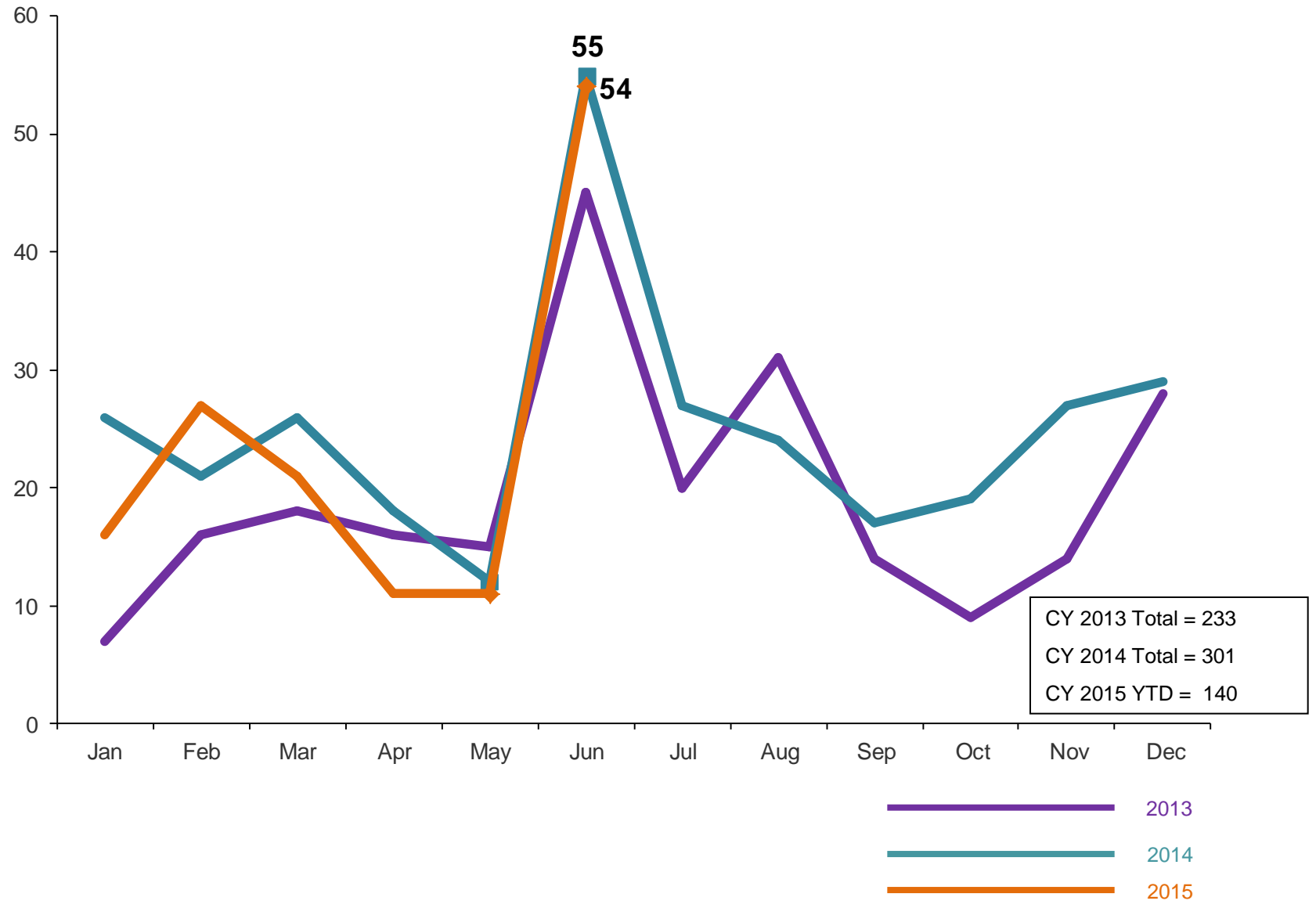
June 2014 – June 2015 (Point-in-Time)



	6/30/14	7/31/14	8/28/14	9/30/14	10/31/14	11/26/14	12/31/14	1/30/15	2/28/15	3/31/15	4/30/15	5/31/15	6/30/15
Number in Placement	168	186	190	196	186	198	184	176	145	164	168	173	141

Releases from NSP to Aftercare

January 2013 – June 2015 (Monthly Total)



Appendix

Figure 1: SCR Intakes by Borough, APR 14 – JUN 14 and APR 15 – JUN 15

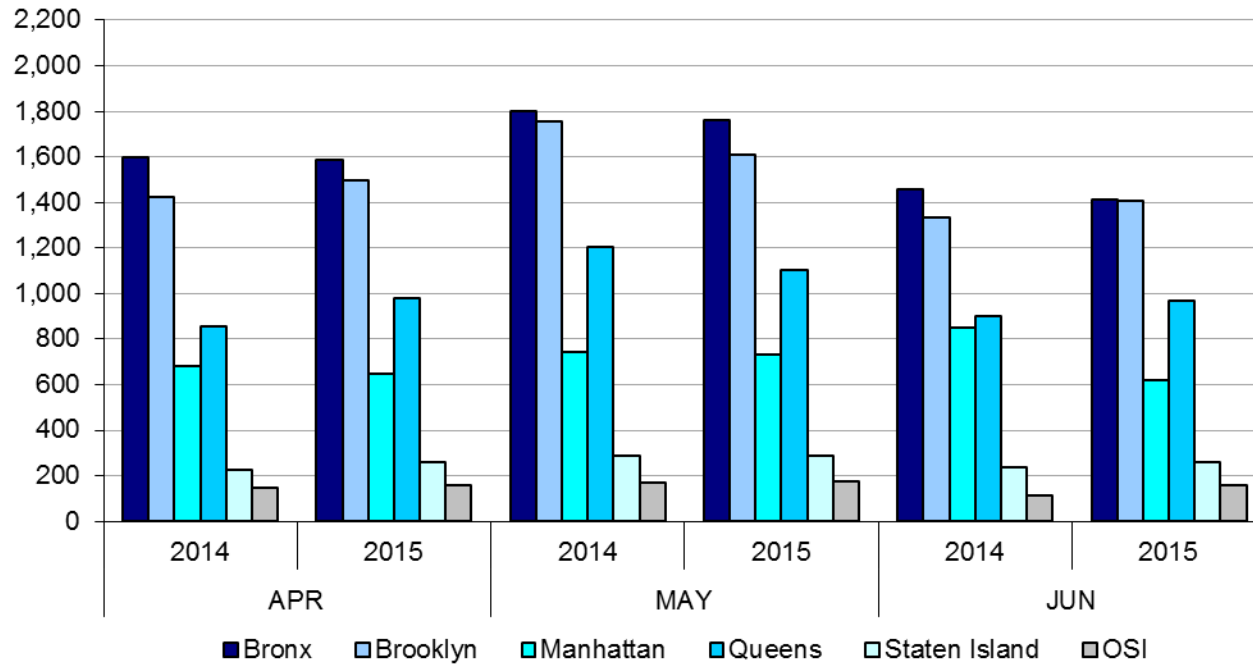


TABLE 1 - SCR Intake Changes by Borough, APR 14 – JUN 14 and APR 15 – JUN 15

Month	Year	Bronx	Brooklyn	Manhattan	Queens	Staten Island	OSI	Other	Total
APR	2014	1,598	1,424	684	856	225	148	142	5,077
	2015	1,589	1,497	649	979	257	157	133	5,261
	% Change	-0.6%	5.1%	-5.1%	14.4%	14.2%	6.1%	-6.3%	3.6%
MAY	2014	1,800	1,757	746	1,205	287	172	156	6,123
	2015	1,759	1,610	730	1,101	290	177	131	5,799
	% Change	-2.3%	-8.4%	-2.1%	-8.6%	1.0%	2.9%	-16.0%	-5.3%
JUN	2014	1,457	1,333	848	900	239	112	151	5,040
	2015	1,411	1,408	621	968	261	157	136	4,962
	% Change	-3.2%	5.6%	-26.8%	7.6%	9.2%	40.2%	-9.9%	-1.5%
Total	2014	4,855	4,514	2,278	2,961	751	432	449	16,240
	2015	4,759	4,515	2,000	3,048	808	491	400	16,022
	% Change	-2.0%	0.0%	-12.2%	2.9%	7.6%	13.7%	-10.9%	-1.3%

Figure 2: Citywide SCR Intakes by Reporter Group, APR 14 – JUN 14 and APR 15 – MAY 15

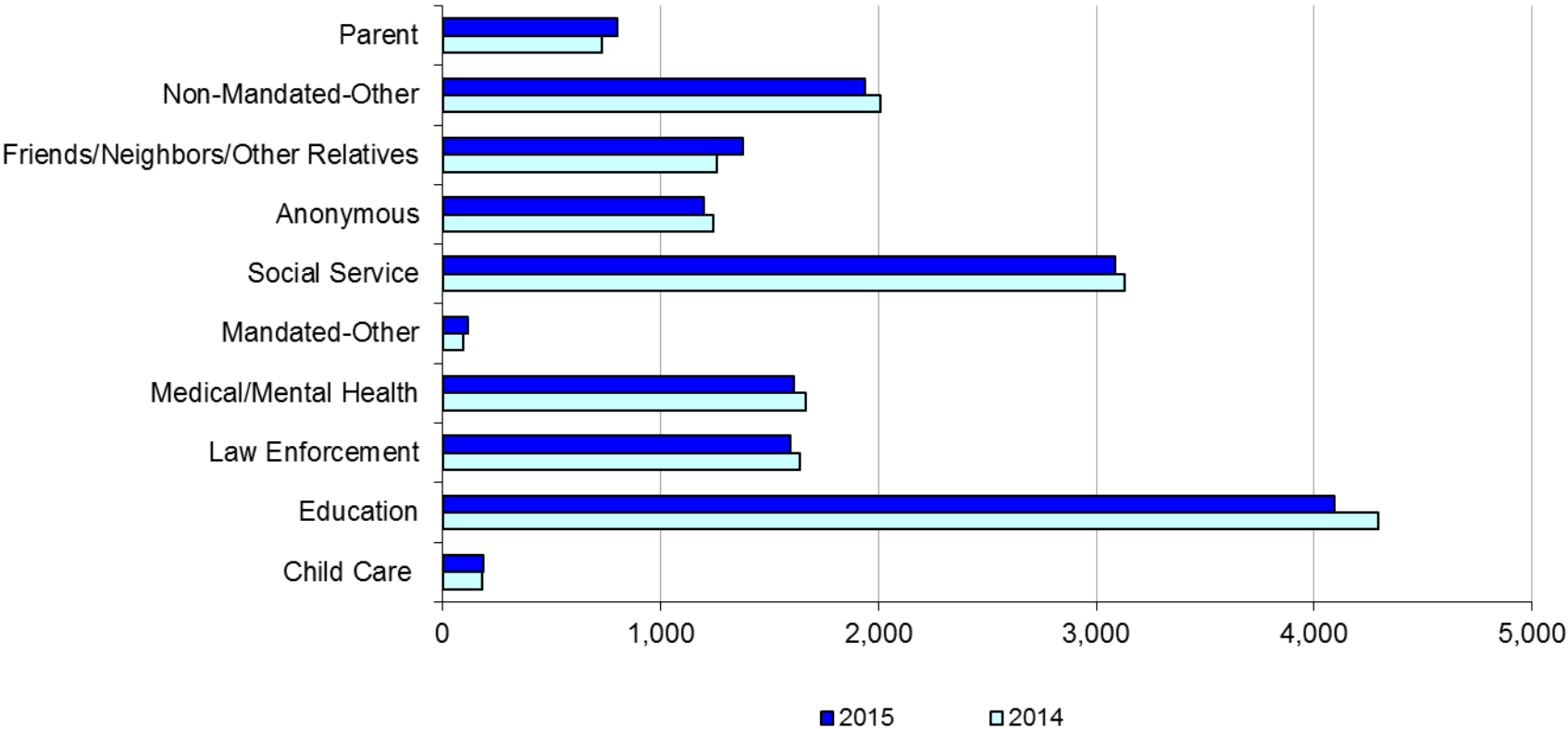
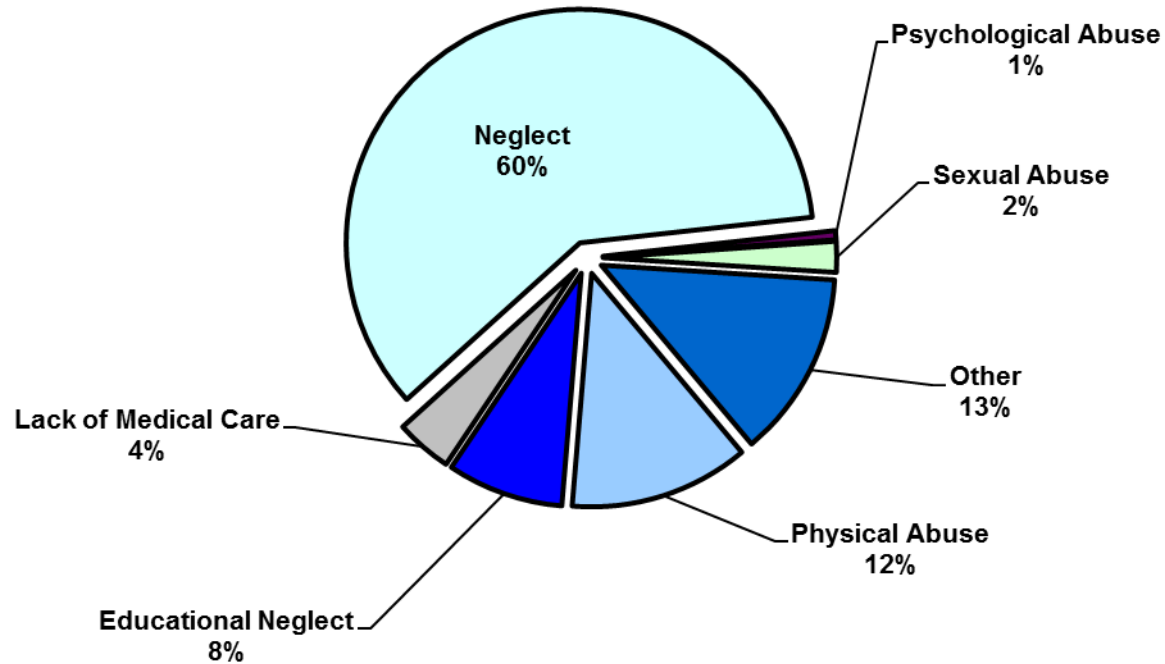


TABLE 2 - SCR Intakes by Reporter Group, APR 14 – JUN 14 and APR 15 – JUN 15

Year	Child Care/ Substitute Care Personnel	Educational Personnel	Law Enforcement	Medical/ Mental Health Personnel	Mandated- Other	Social Service Personnel	Anonymous	Friends/ Neighbors/ Other Relatives	Non- Mandated- Other	Parent	Foster Parent	Total
Bronx												
2014	52	1,393	397	496	21	982	353	345	606	209	0	4,854
2015	51	1,283	390	440	42	1,008	358	379	598	208	0	4,757
% Change	-1.9%	-7.9%	-1.8%	-11.3%	100.0%	2.6%	1.4%	9.9%	-1.3%	-0.5%	--	-2.0%
Brooklyn												
2014	37	1,239	461	436	19	798	394	368	573	192	0	4,517
2015	48	1,217	478	428	30	826	355	428	511	195	1	4,517
% Change	29.7%	-1.8%	3.7%	-1.8%	57.9%	3.5%	-9.9%	16.3%	-10.8%	1.6%	--	0.0%
Manhattan												
2014	26	487	297	249	17	451	172	192	310	76	1	2,278
2015	22	415	242	223	14	391	153	178	266	95	1	2,000
% Change	-15.4%	-14.8%	-18.5%	-10.4%	-17.6%	-13.3%	-11.0%	-7.3%	-14.2%	25.0%	0.0%	-12.2%
Queens												
2014	20	889	297	324	22	593	179	229	277	130	0	2,960
2015	19	907	302	326	21	566	203	252	309	143	0	3,048
% Change	-5.0%	2.0%	1.7%	0.6%	-4.5%	-4.6%	13.4%	10.0%	11.6%	10.0%	--	3.0%
Staten Island												
2014	12	201	63	61	4	103	90	78	96	40	2	750
2015	6	204	82	95	2	111	81	90	88	49	0	808
% Change	-50.0%	1.5%	30.2%	55.7%	-50.0%	7.8%	-10.0%	15.4%	-8.3%	22.5%	--	7.7%
OSI												
2014	27	41	22	55	7	64	34	27	103	52	0	432
2015	34	39	20	45	9	67	37	26	130	81	4	492
% Change	25.9%	-4.9%	-9.1%	-18.2%	28.6%	4.7%	8.8%	-3.7%	26.2%	55.8%	--	13.9%
Other												
2014	5	43	105	47	2	139	22	19	43	34	0	459
2015	6	29	83	55	1	117	12	27	39	30	0	399
% Change	20.0%	-32.6%	-21.0%	17.0%	-50.0%	-15.8%	-45.5%	42.1%	-9.3%	-11.8%	--	-13.1%
Citywide												
2014	179	4,293	1,642	1,668	92	3,130	1,244	1,258	2,008	733	3	16,250
2015	186	4,094	1,597	1,612	119	3,086	1,199	1,380	1,941	801	6	16,021
% Change	3.9%	-4.6%	-2.7%	-3.4%	29.3%	-1.4%	-3.6%	9.7%	-3.3%	9.3%	100.0%	-1.4%

Figure 3: SCR Allegations, APR 15 – JUN 15



Total Allegations = 39,960

TABLE 3 - SCR Allegations, APR 14 - JUN 14 and APR 15 – JUN 15

Year	Physical Abuse	Educational Neglect	Lack of Medical Care	Neglect	Psychological Abuse	Sexual Abuse	Other	Total
Bronx								
2014	1,510	1,307	589	7,666	54	217	1,636	12,979
2015	1,465	1,198	513	7,197	67	240	1,486	12,166
% Change	-3.0%	-8.3%	-12.9%	-6.1%	24.1%	10.6%	-9.2%	-6.3%
Brooklyn								
2014	1,498	1,045	456	7,142	58	227	1,493	11,919
2015	1,385	1,000	393	6,867	54	256	1,427	11,382
% Change	-7.5%	-4.3%	-13.8%	-3.9%	-6.9%	12.8%	-4.4%	-4.5%
Manhattan								
2014	545	391	187	2807	32	88	566	4,616
2015	486	330	191	2498	25	100	539	4,169
% Change	-10.8%	-15.6%	2.1%	-11.0%	-21.9%	13.6%	-4.8%	-9.7%
Queens								
2014	1,051	448	276	4,182	55	160	910	7,082
2015	1,009	440	303	4,207	68	150	959	7,136
% Change	-4.0%	-1.8%	9.8%	0.6%	23.6%	-6.3%	5.4%	0.8%
Staten Island								
2014	220	131	55	1,272	9	30	358	2,075
2015	211	151	62	1,433	19	40	405	2,321
% Change	-4.1%	15.3%	12.7%	12.7%	111.1%	33.3%	13.1%	11.9%
OSI								
2014	265	57	70	1,157	8	67	162	1,786
2015	308	50	66	1,241	12	51	129	1,857
% Change	16.2%	-12.3%	-5.7%	7.3%	50.0%	-23.9%	-20.4%	4.0%
Other								
2014	113	49	35	545	8	34	199	983
2015	107	48	36	513	7	15	203	929
% Change	-5.3%	-2.0%	2.9%	-5.9%	-12.5%	-55.9%	2.0%	-5.5%
Citywide								
2014	5,202	3,428	1,668	24,771	224	823	5,324	41,440
2015	4,971	3,217	1,564	23,956	252	852	5,148	39,960
% Change	-4.4%	-6.2%	-6.2%	-3.3%	12.5%	3.5%	-3.3%	-3.6%

**TABLE 4 - Purchased Preventive Cases
Opened and Closed
January 2012 to June 2015**

Month	Opened Cases	Closed Cases
2012		
Jan-12	870	629
Feb-12	889	835
Mar-12	944	991
Apr-12	997	870
May-12	1,117	979
Jun-12	965	869
Jul-12	853	979
Aug-12	917	1,007
Sep-12	727	900
Oct-12	875	915
Nov-12	738	702
Dec-12	938	871
2013		
Jan-13	960	884
Feb-13	873	916
Mar-13	962	1,171
Apr-13	940	988
May-13	864	1,337
Jun-13	863	780
Jul-13	868	1,004
Aug-13	802	1,084
Sep-13	844	724
Oct-13	933	765
Nov-13	901	685
Dec-13	1,106	552
2014		
Jan-14	983	640
Feb-14	987	679
Mar-14	1,146	874
Apr-14	1,074	896
May-14	1,042	888
Jun-14	976	762
Jul-14	1,050	1,077
Aug-14	944	943
Sep-14	987	705
Oct-14	1,050	819
Nov-14	818	638
Dec-14	1,268	721
2015		
Jan-15	814	716
Feb-15	1,026	590
Mar-15	1,314	686
Apr-15	1,140	743
May-15	1,079	842
Jun-15	1,238	797

**Table 5 - Referrals to Purchased Preventive Services by Source
January 2012 to June 2015**

Month	Total Referrals	Division of Child Protection	Foster Care Agencies	PPRS Transfer	School	Self	Other Sources*
2012							
Jan-12	1,431	66.5%	0.7%	8.5%	3.6%	3.8%	17.0%
Feb-12	1,043	78.2%	1.1%	9.0%	1.9%	6.7%	3.1%
Mar-12	1,525	73.6%	0.9%	6.0%	1.8%	3.9%	13.8%
Apr-12	1,370	72.8%	1.0%	9.4%	1.2%	4.2%	11.4%
May-12	1,463	70.9%	1.0%	7.6%	1.1%	4.4%	15.0%
Jun-12	1,279	73.8%	0.5%	5.9%	1.0%	4.7%	14.2%
Jul-12	1,308	77.4%	1.2%	7.0%	0.3%	3.7%	10.5%
Aug-12	1,391	74.0%	0.9%	11.7%	0.3%	2.9%	10.2%
Sep-12	1,110	70.5%	1.9%	9.6%	1.2%	5.0%	11.9%
Oct-12	1,159	61.1%	1.4%	12.6%	2.7%	4.9%	17.3%
Nov-12	1,106	67.0%	1.0%	9.9%	2.2%	4.7%	15.3%
Dec-12	1,206	68.7%	0.8%	5.8%	2.7%	5.6%	16.4%
CY 2012	15,391	71.3%	1.0%	8.5%	1.6%	4.5%	13.1%
2013							
Jan-13	1,474	74.1%	1.2%	7.3%	1.2%	3.7%	12.5%
Feb-13	1,308	75.8%	1.1%	8.0%	1.6%	2.9%	10.6%
Mar-13	1,270	73.5%	1.2%	6.7%	2.4%	3.9%	12.3%
Apr-13	1,421	77.9%	0.8%	7.4%	0.9%	3.0%	10.1%
May-13	1,320	68.4%	0.5%	10.2%	1.5%	3.8%	15.5%
Jun-13	953	69.2%	1.2%	9.4%	2.6%	5.0%	12.6%
Jul-13	1,014	66.3%	1.9%	14.4%	1.6%	3.9%	11.9%
Aug-13	1,212	70.5%	0.7%	11.8%	0.7%	4.7%	11.6%
Sep-13	1,262	64.0%	2.1%	11.3%	1.7%	6.7%	14.2%
Oct-13	1,319	61.0%	1.1%	9.0%	2.9%	7.5%	18.5%
Nov-13	1,249	55.9%	1.6%	10.5%	4.6%	9.2%	18.3%
Dec-13	1,464	62.2%	1.2%	8.2%	2.3%	9.2%	17.0%
CY 2013	15,266	68.3%	1.2%	9.4%	2.0%	5.3%	13.8%
2014							
Jan-14	1,537	70.0%	1.2%	6.6%	2.3%	5.8%	14.2%
Feb-14	1,334	69.7%	0.8%	8.4%	1.7%	5.5%	13.9%
Mar-14	1,612	70.0%	1.4%	8.6%	1.6%	5.3%	13.1%
Apr-14	1,525	70.2%	0.9%	7.6%	2.1%	3.7%	15.4%
May-14	1,580	74.4%	0.7%	8.3%	1.4%	5.2%	10.0%
Jun-14	1,550	78.6%	1.2%	6.3%	1.2%	3.2%	9.4%
Jul-14	1,659	79.6%	1.5%	6.7%	0.4%	4.2%	7.6%
Aug-14	1,395	72.2%	1.6%	10.8%	0.3%	4.9%	10.3%
Sep-14	1,597	49.4%	1.5%	7.6%	0.3%	4.5%	36.8%
Oct-14	1,634	68.2%	1.9%	10.0%	1.2%	4.6%	14.1%
Nov-14	1,311	66.4%	0.9%	14.3%	2.4%	3.9%	12.1%
Dec-14	1,785	71.1%	1.4%	8.8%	2.9%	4.8%	11.0%
CY 2014	18,519	70.1%	1.3%	8.6%	1.5%	4.6%	14.0%
2015							
Jan-15	1,432	76.5%	1.5%	9.8%	1.4%	3.1%	7.6%
Feb-15	1,589	76.2%	0.8%	8.7%	1.6%	4.5%	8.2%
Mar-15	1,866	74.3%	0.8%	8.1%	1.4%	4.5%	10.8%
Apr-15	1,802	77.7%	1.3%	7.8%	0.6%	3.4%	9.1%
May-15	1,622	77.3%	1.0%	5.9%	1.5%	4.1%	10.2%
Jun-15	1,795	76.2%	0.9%	8.4%	1.2%	3.4%	10.0%

*Other Community Sources includes the Department of Homeless Services, Family Court, FAP, Hospitals and Medical facilities, the NYC Housing Authority, PINS/DAS, Probation, and Sponsor Agencies.