

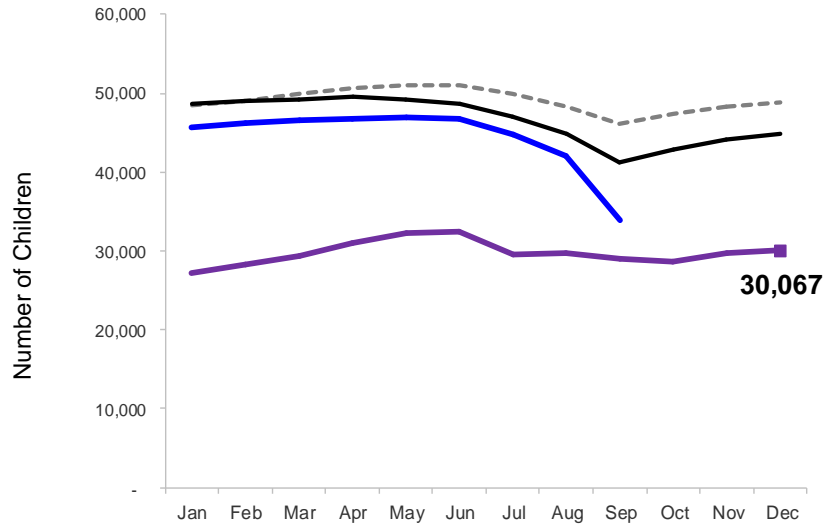


Flash

January 2014

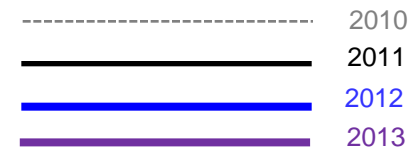
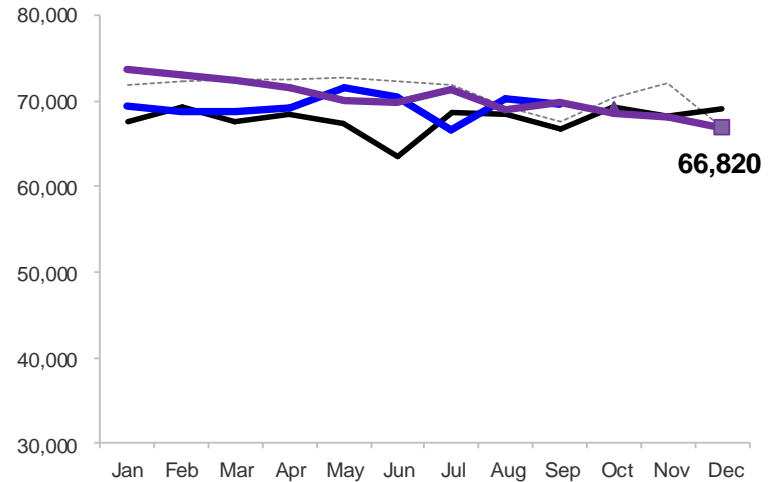
Children Enrolled in Contracted Early Learn Programs

January 2010 – December 2013 (End of Month)



Children Using Vouchers for Child Care

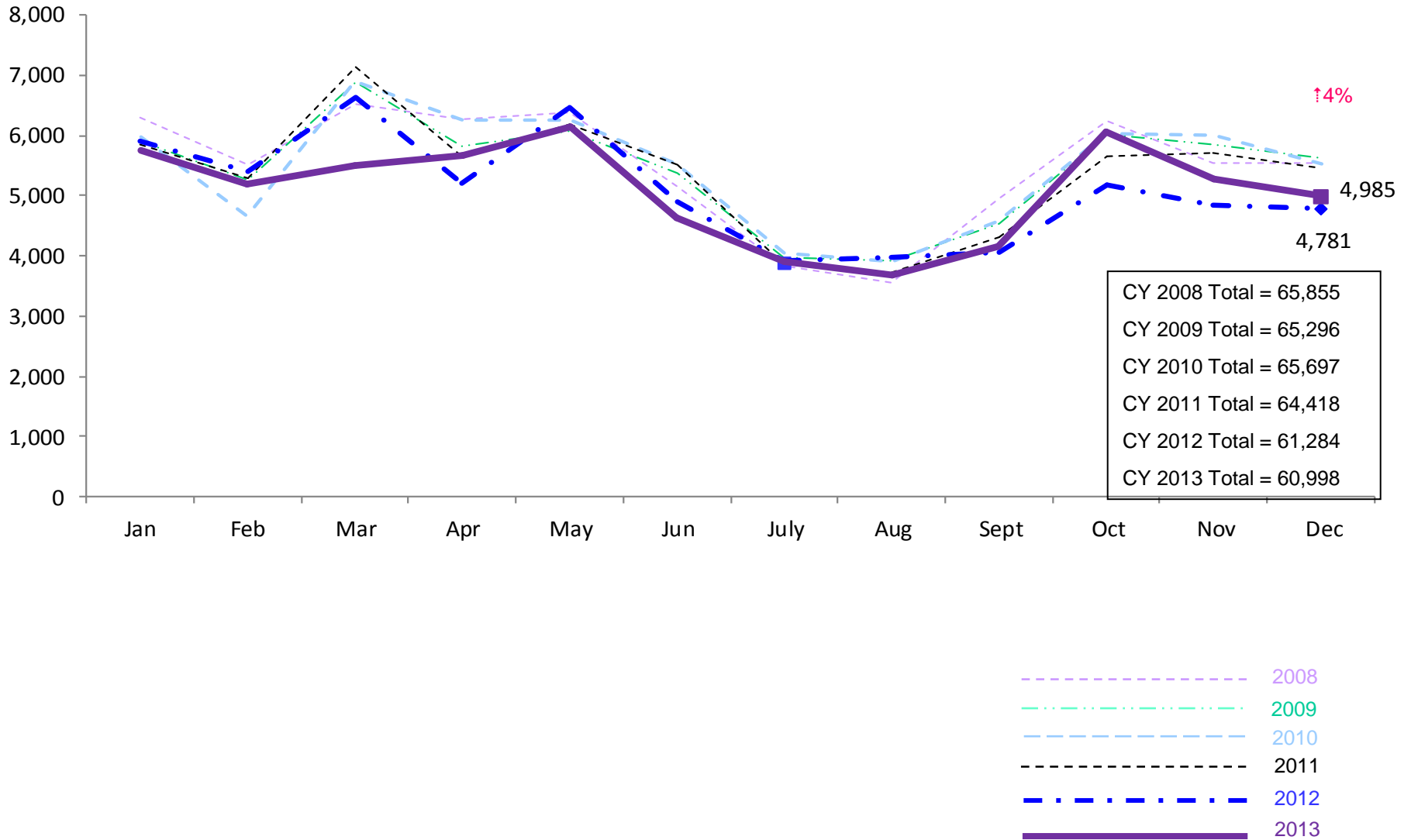
January 2010 – December 2013 (End of Month)



Notes: 1) Beginning October 1, 2012 ACS converted its early care and education system to a new model, Early Learn NYC. Enrollment data for the transitional months of October – December 2012 are not available because contractors were in the midst of implementing the data collection systems.

SCR Intakes

January 2008 – December 2013 (Monthly Total)

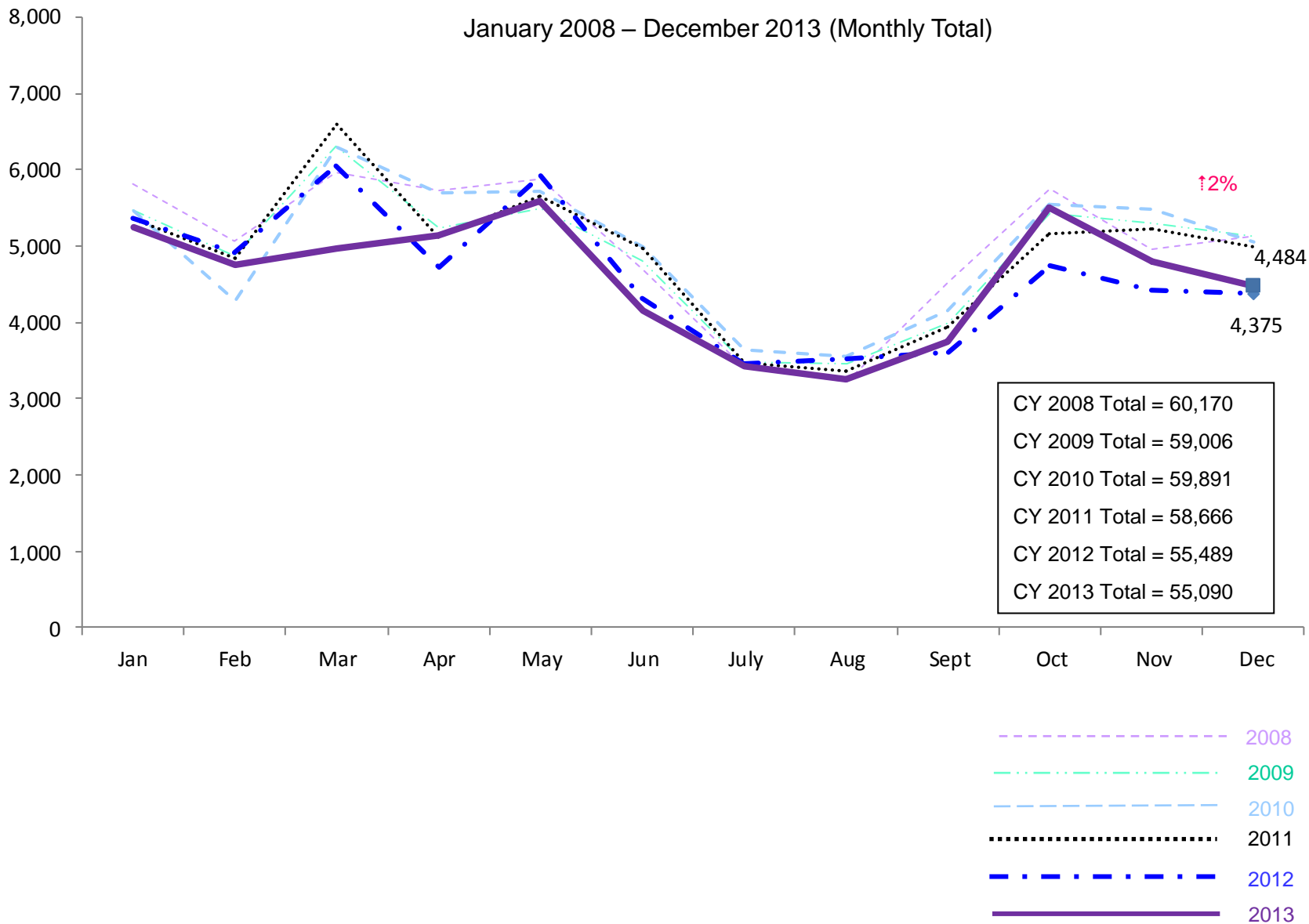


Note: Percentage change is December 2012 vs. December 2013.

See Pages 29 through 34 of the Appendix for supporting data.

SCR Consolidated Investigations

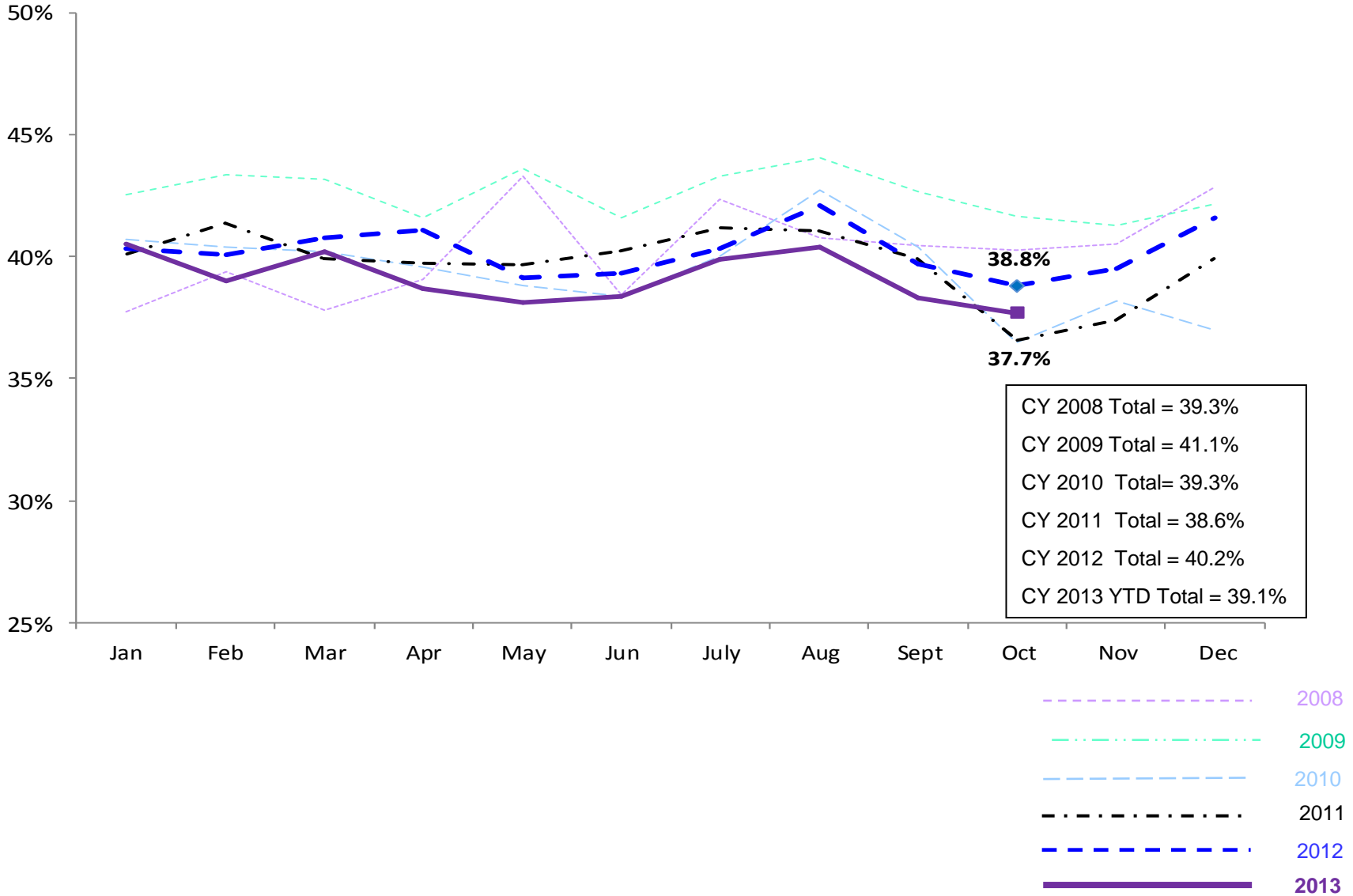
January 2008 – December 2013 (Monthly Total)



Note: Percentage change is December 2012 vs. December 2013.

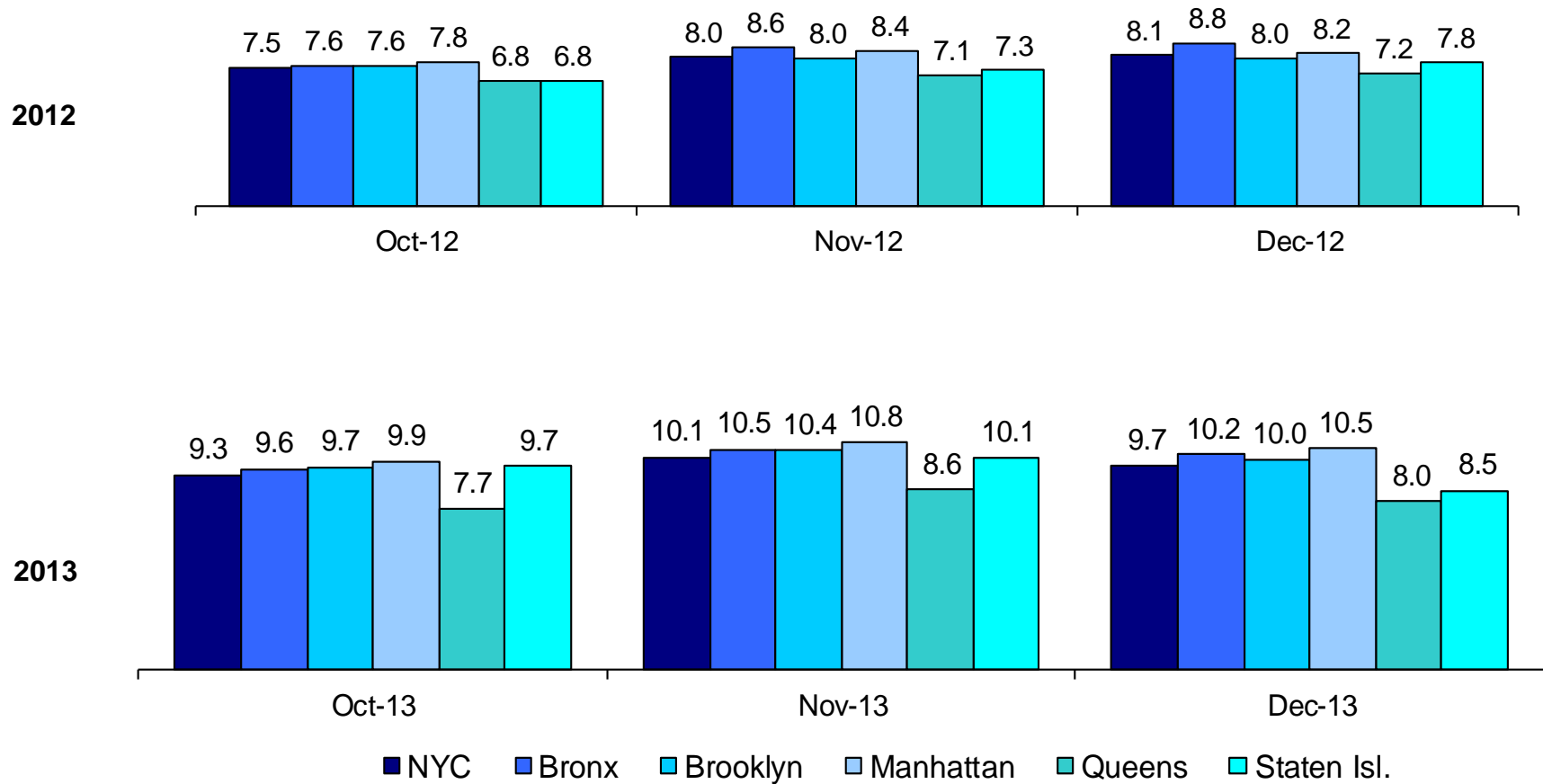
SCR Investigation Indication Rate

January 2008 – October 2013



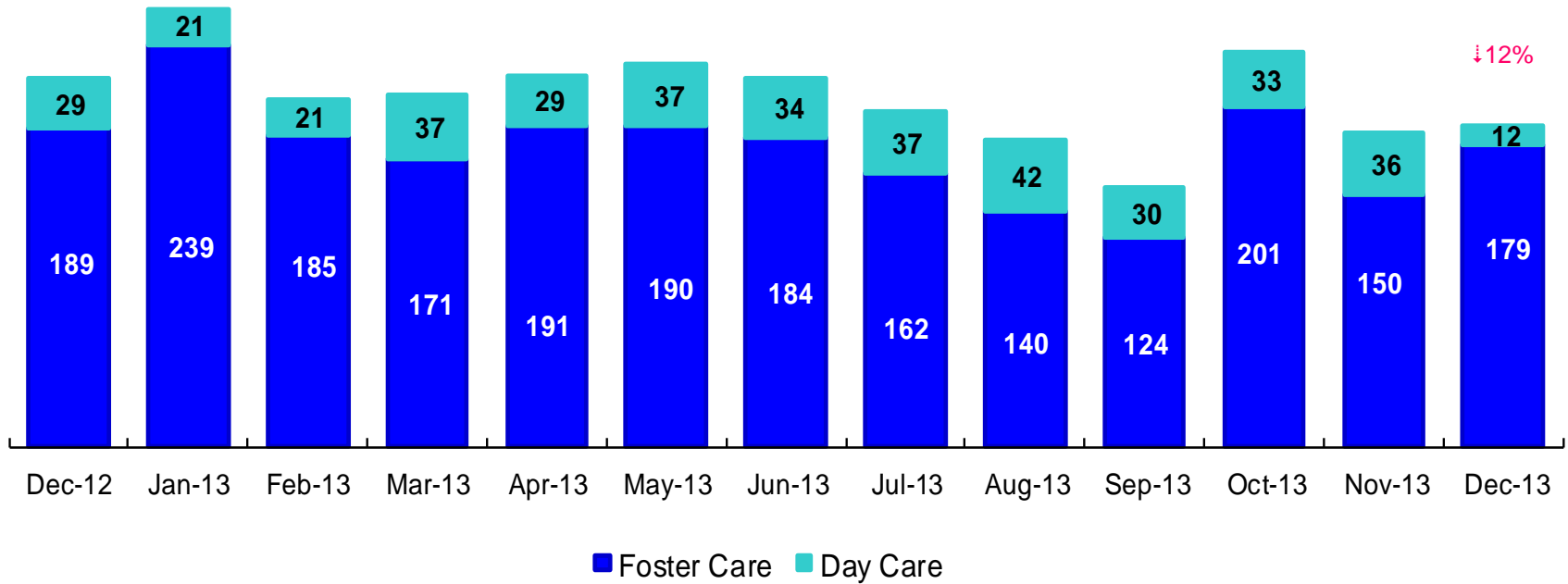
Note: Percentage change is October 2012 vs. October 2013.

Average P/D Combined Caseload* October 2012 – December 2012 & October 2013 – December 2013



* Caseloads are of protective/diagnostic caseworkers only and exclude the caseloads carried by Level I and Level II Supervisors. 6

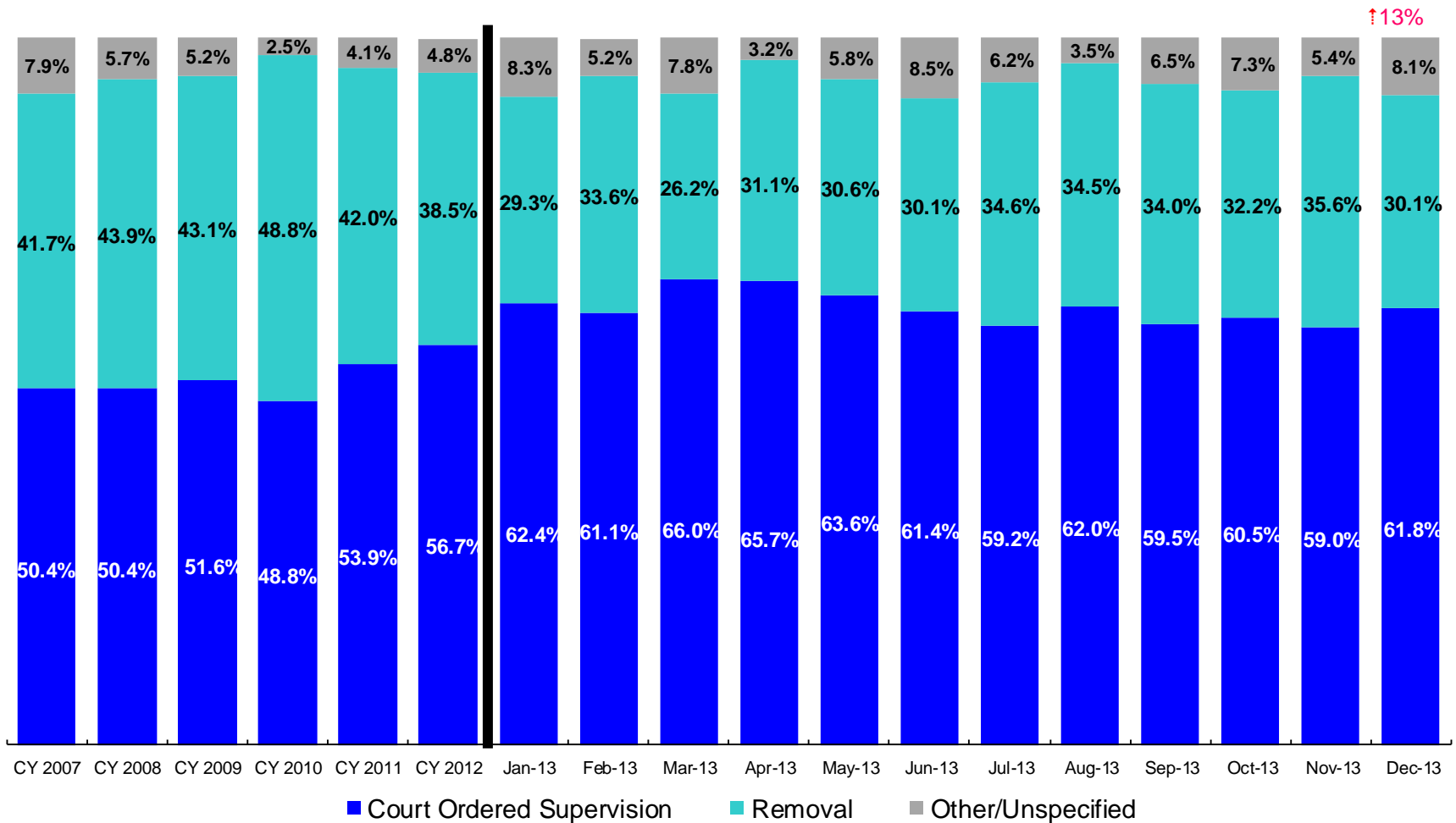
OSI Investigations by Program, December 2012 – December 2013



	Dec 2012	Jan 2013	Feb 2013	Mar 2013	Apr 2013	May 2013	Jun 2013	Jul 2013	Aug 2013	Sep 2013	Oct 2013	Nov 2013	Dec 2013
Number of Investigations	218	260	206	208	220	227	218	199	182	154	234	186	191

Note: Percentage change is December 2012 vs. December 2013.

Article 10 Total Filings & Filing Outcomes, CY 2007 - CY 2012 and January - December 2013

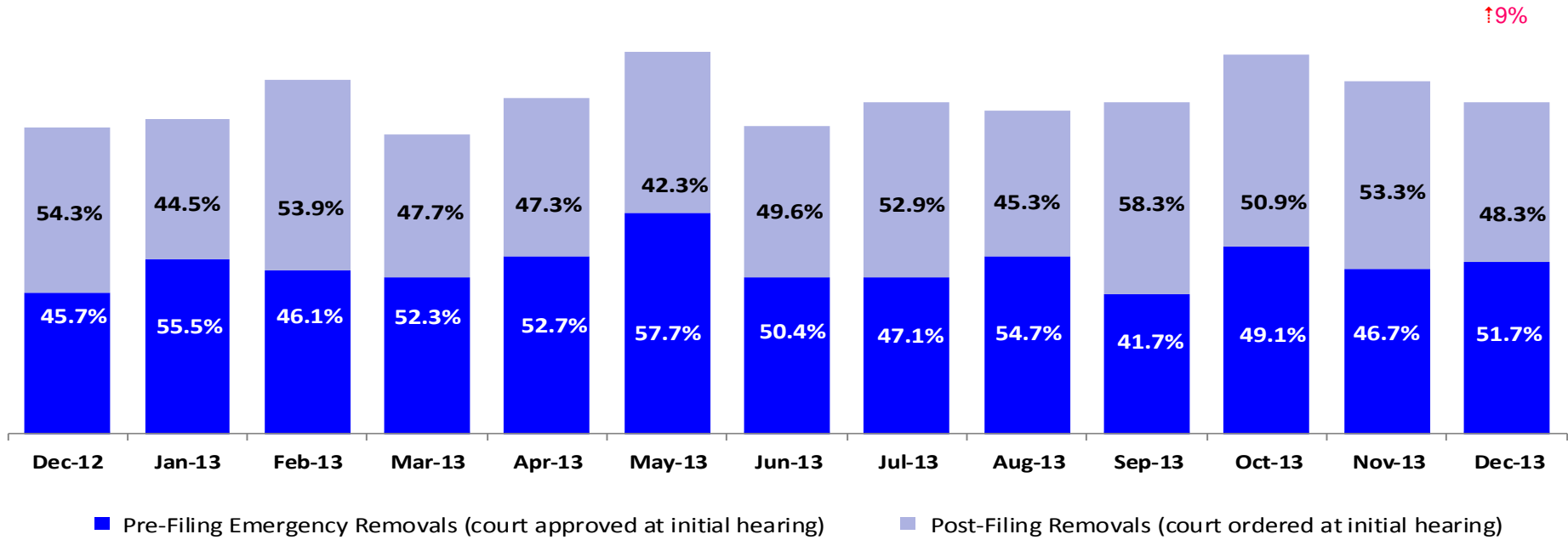


↑13%

	CY 2007	CY 2008	CY 2009	CY 2010	CY 2011	CY 2012	Jan 2013	Feb 2013	Mar 2013	Apr 2013	May 2013	Jun 2013	Jul 2013	Aug 2013	Sep 2013	Oct 2013	Nov 2013	Dec 2013
Art.10 Filings	12,256	11,024	11,283	10,069	9,600	8,906	781	767	832	787	913	743	699	687	711	860	722	804

Notes: 1) The category "Other/Unspecified" includes released with no supervision; no order issued and no outcome specified. Outcomes of cases heard the next day are not yet captured in this report. 2) Percentage change is December 2012 vs. December 2013.

Article 10 Filing Removals, December 2012 – December 2013



↑9%

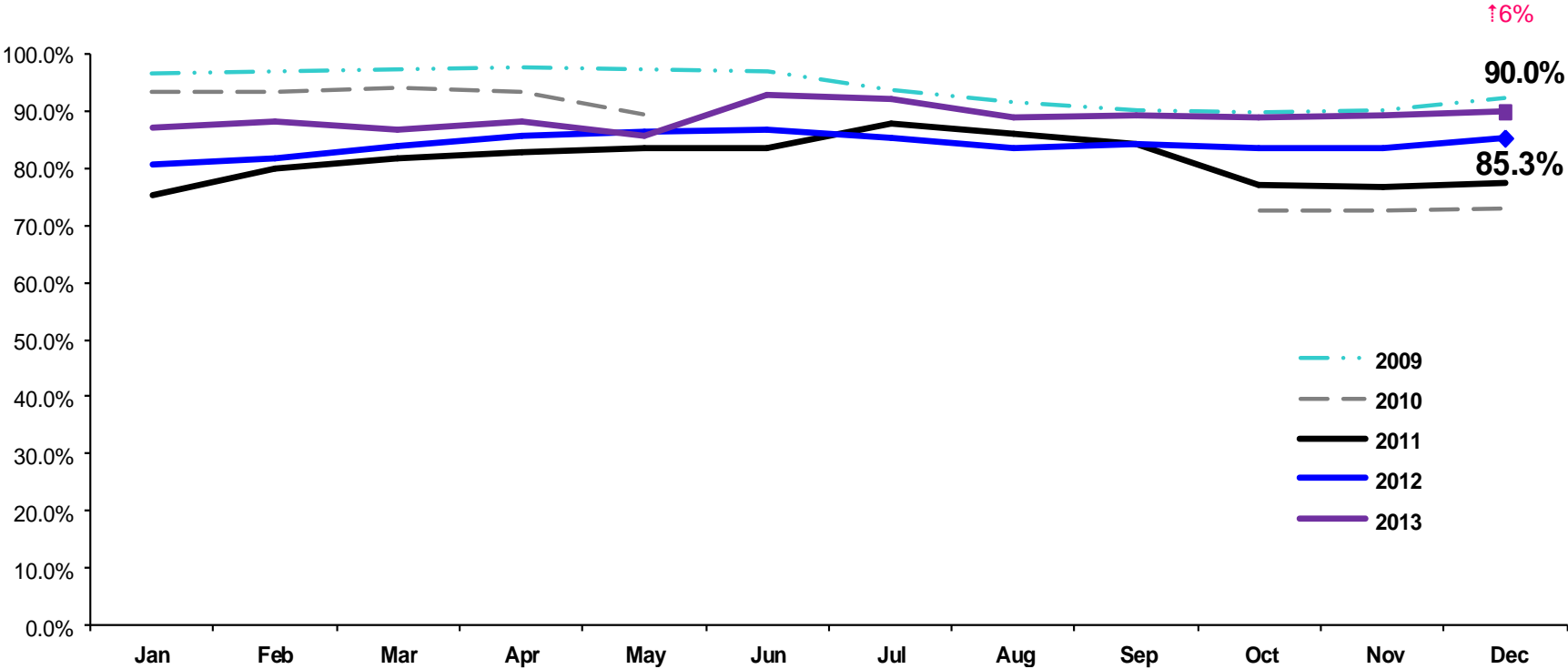
	Dec 2012	Jan 2013	Feb 2013	Mar 2013	Apr 2013	May 2013	Jun 2013	Jul 2013	Aug 2013	Sep 2013	Oct 2013	Nov 2013	Dec 2013
Number of Removals	223	229	258	218	245	279	224	242	236	242	277	257	242

Note: Percentage change is December 2012 vs. December 2013.

PPRS Utilization Rate, January 2009 – December 2013

(End of Month)

General Preventive



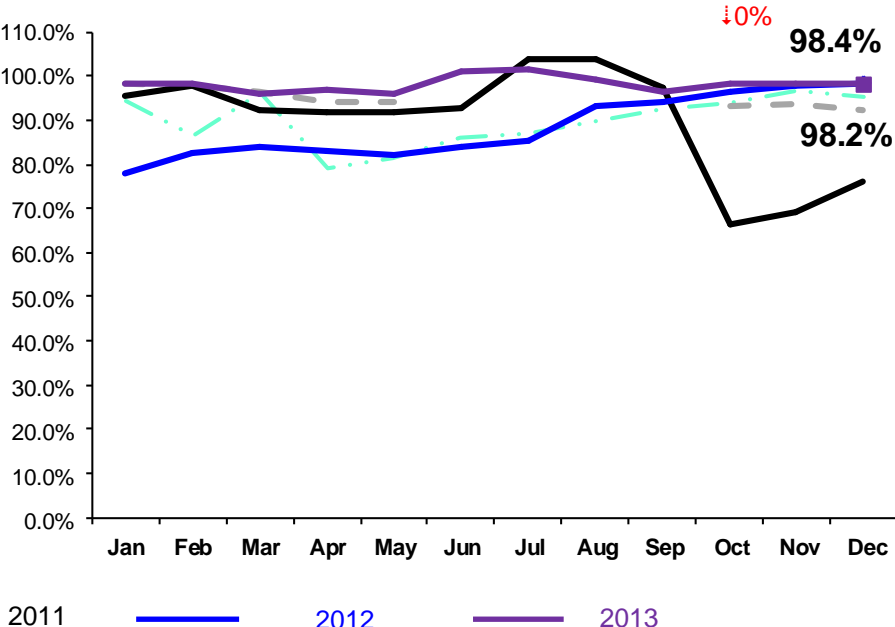
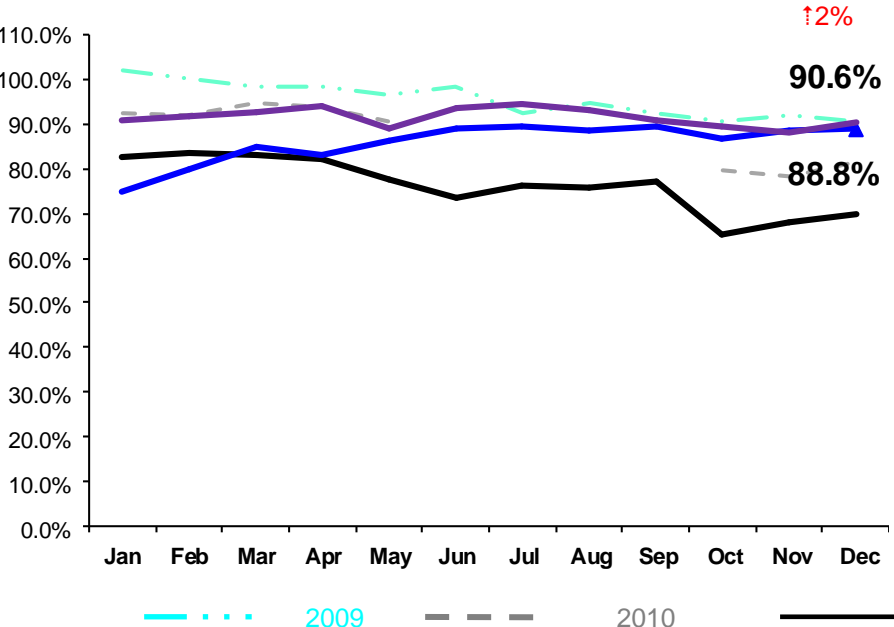
Notes: 1) Beacons programs are included in the GP utilization rates. 2) Utilization rates are not available for June – September 2010 due to the transition in program capacity levels. Beginning in October the utilization rates reflect the new capacity levels providers committed to staffing as of October 1, 2010. 3) During February - June 2011 GP rates were adjusted by excluding programs in the process of being closed. GP rates were also adjusted during July – September 2011 by excluding newly opened programs. 4) During June-October 2013 GP programs in the process of converting to EBMs were excluded from the GP utilization statistics. 5) Percentage change is December 2012 vs. December 2013.

PPRS Utilization Rate, January 2009 – December 2013

(End of Month)

Family Rehabilitation Program/Family Treatment Rehabilitation

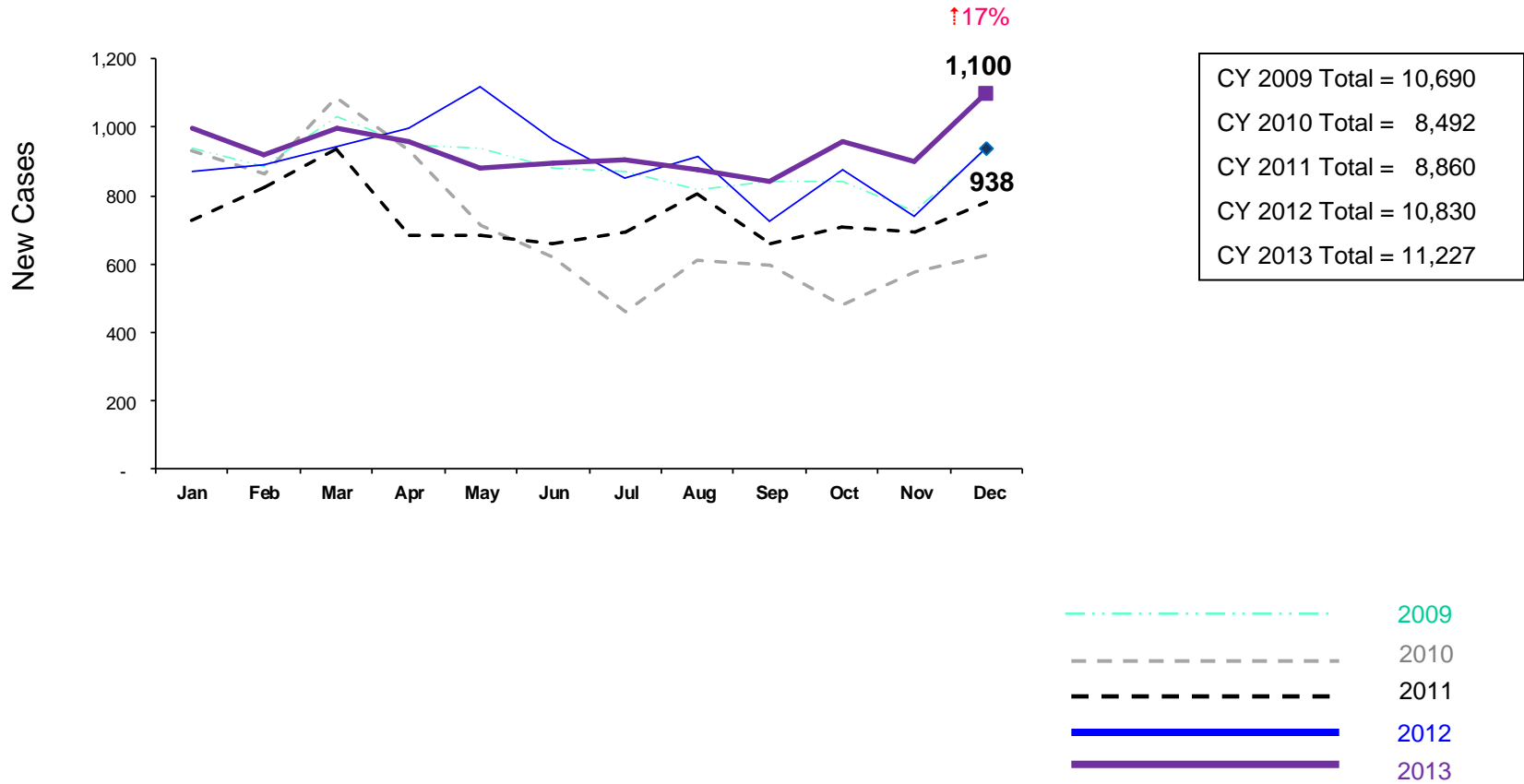
Medically Fragile



Notes: 1) Utilization rates are not available for June – September 2010 due to the transition in program capacity levels . Beginning in October the utilization rates reflect the new capacity levels providers committed to staffing as of October 1, 2010. 2) During February - June 2011 FRP rates were adjusted by excluding programs in the process of being closed. FT/R rates were also adjusted during July – September 2011 by excluding newly opened programs. As of October 2011 all FT/R programs are included in the FT/R utilization rates. 3) Beginning July 2011 Family Treatment Rehabilitation programs replaced the Family Rehabilitation programs. 4) Beginning December 2011 the NYF Family Services for deaf Children and Adults program is no longer included in the medically fragile utilization rate. 5) During June -October 2013 FTR programs in the process of converting to EBMs were excluded from the FTR utilization statistics. 6) Percentage change is December 2012 vs. December 2013.

New Preventive Cases*, January 2009 – December 2013

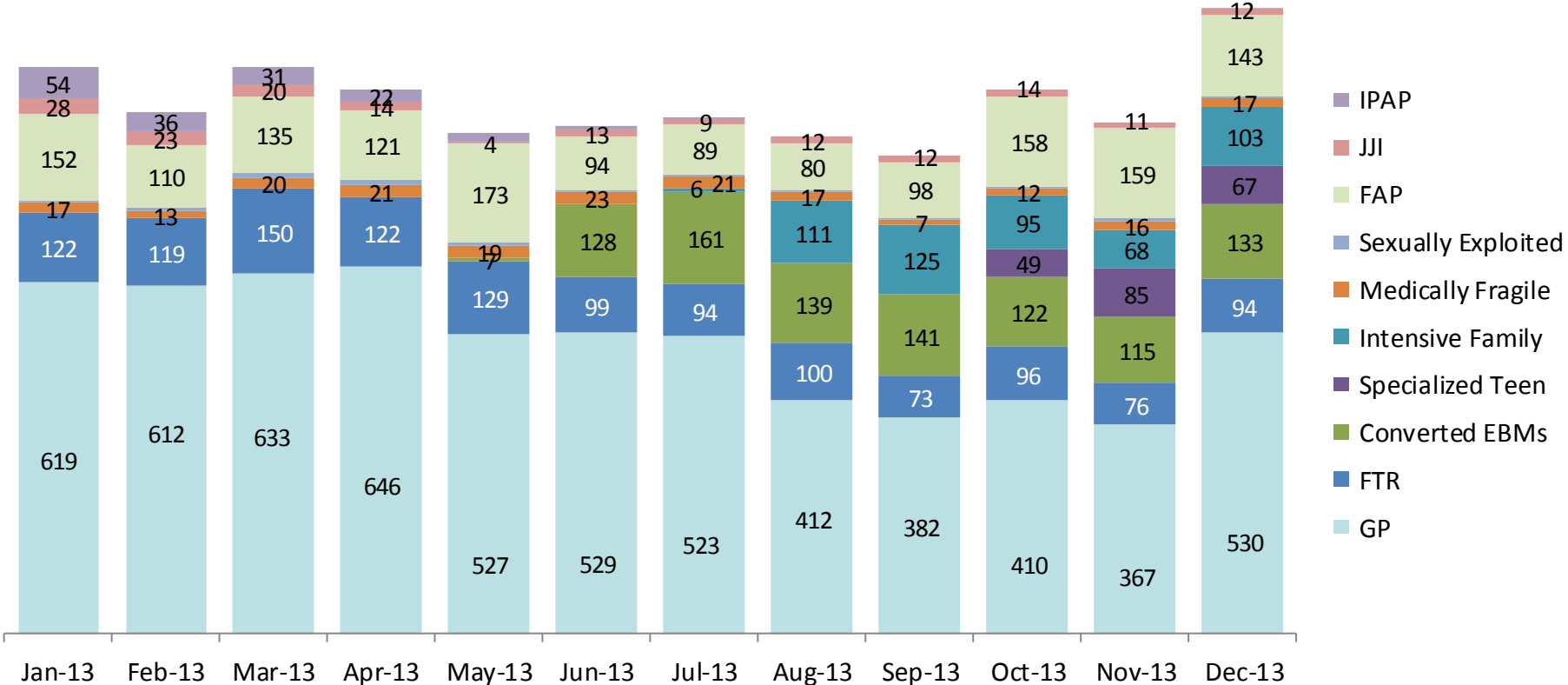
(Monthly Total)



*Notes: 1) Programs included in new preventive case count: GP, FRP, FTR, Medically Fragile, Enhanced Preventive, Intensive Preventive, JJI, and FAP. 2) New preventive cases do not include cases transferred from one preventive program to another. 3) Percentage change is December 2012 vs. December 2013.

New Preventive Cases* by Program Type, January 2013 – December 2013

(Monthly Total)



	Jan 2013	Feb 2013	Mar 2013	Apr 2013	May 2013	Jun 2013	Jul 2013	Aug 2013	Sep 2013	Oct 2013	Nov 2013	Dec 2013
Number of New Preventive Cases	996	919	997	957	881	893	907	874	843	959	901	1,100

Notes: 1) New preventive cases do not include cases transferred from one preventive program to another. 2) Percentage change is December 2012 vs. December 2013.

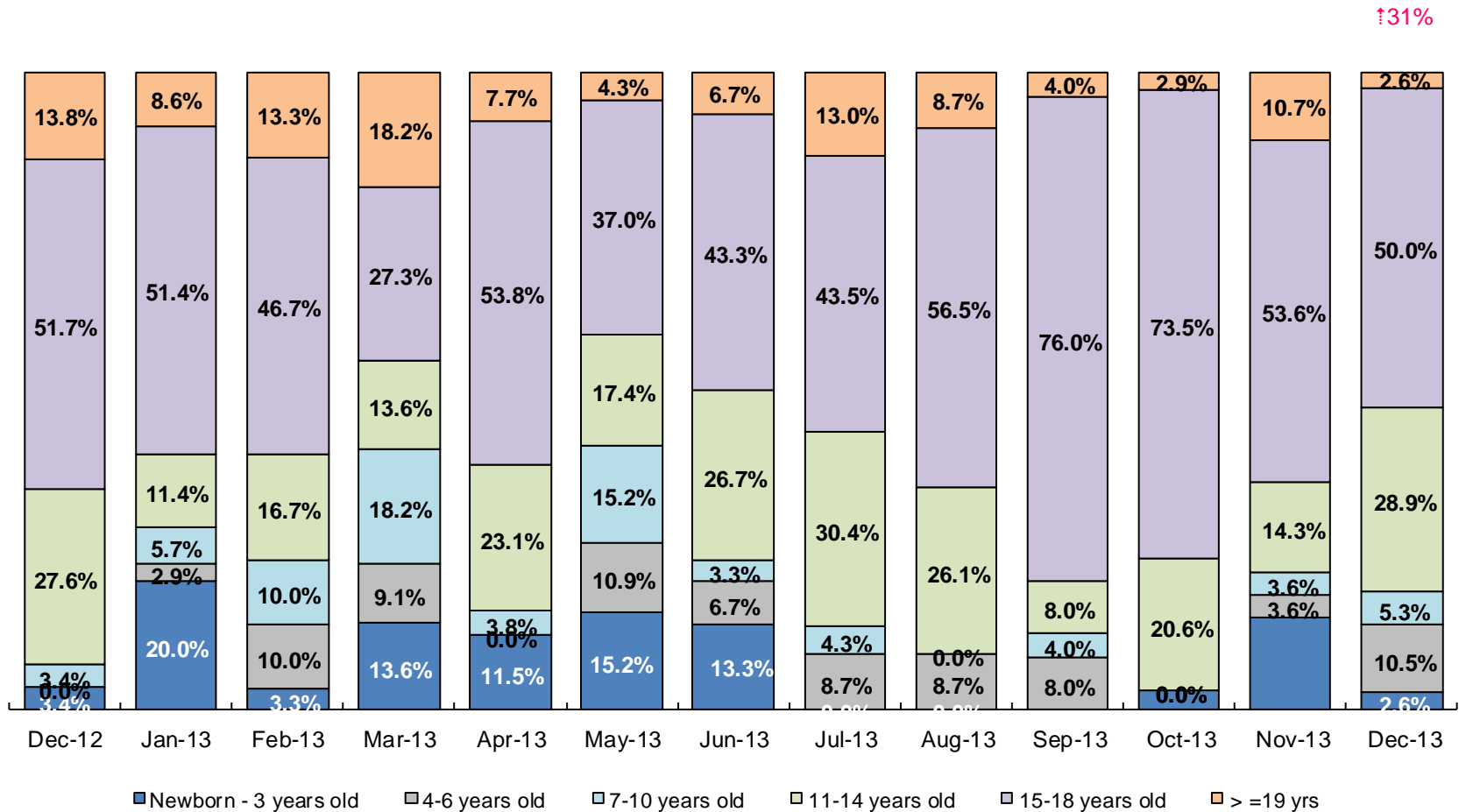
Referrals to Purchased Preventive Services (GP and FRP/FTR) by Source
January 2011 to December 2013

Month	Total Referrals	Division of Child Protection	Foster Care Agencies	PPRS Transfer	School	Self	Other Sources*
2011							
Jan-11	995	76.8%	1.1%	7.0%	3.4%	7.0%	4.6%
Feb-11	986	77.2%	1.1%	8.8%	2.5%	6.2%	4.2%
Mar-11	1,163	72.6%	0.4%	17.1%	2.2%	4.8%	2.8%
Apr-11	991	76.2%	0.4%	16.9%	1.3%	3.5%	1.7%
May-11	884	74.9%	0.2%	16.1%	1.2%	4.2%	3.4%
Jun-11	889	79.6%	0.7%	12.0%	0.8%	3.8%	3.0%
Jul-11	1,251	61.0%	0.5%	22.3%	0.5%	2.6%	13.1%
Aug-11	1,028	76.8%	0.6%	14.3%	0.7%	5.1%	2.5%
Sep-11	902	74.8%	1.0%	16.0%	1.6%	4.1%	2.5%
Oct-11	873	71.1%	1.1%	12.5%	3.1%	7.0%	5.2%
Nov-11	834	76.9%	0.7%	6.8%	3.8%	7.0%	4.8%
Dec-11	1,071	69.1%	0.9%	7.5%	3.1%	5.3%	14.1%
CY 2011	11,867	73.5%	0.7%	13.4%	2.0%	5.0%	5.4%
2012							
Jan-12	1,431	66.5%	0.7%	8.5%	3.6%	3.8%	17.0%
Feb-12	1,043	78.2%	1.1%	9.0%	1.9%	6.7%	3.1%
Mar-12	1,525	73.6%	0.9%	6.0%	1.8%	3.9%	13.8%
Apr-12	1,370	72.8%	1.0%	9.4%	1.2%	4.2%	11.4%
May-12	1,463	70.9%	1.0%	7.6%	1.1%	4.4%	15.0%
Jun-12	1,279	73.8%	0.5%	5.9%	1.0%	4.7%	14.2%
Jul-12	1,308	77.4%	1.2%	7.0%	0.3%	3.7%	10.5%
Aug-12	1,391	74.0%	0.9%	11.7%	0.3%	2.9%	10.2%
Sep-12	1,110	70.5%	1.9%	9.6%	1.2%	5.0%	11.9%
Oct-12	1,159	61.1%	1.4%	12.6%	2.7%	4.9%	17.3%
Nov-12	1,106	67.0%	1.0%	9.9%	2.2%	4.7%	15.3%
Dec-12	1,206	68.7%	0.8%	5.8%	2.7%	5.6%	16.4%
CY 2012	15,391	71.3%	1.0%	8.5%	1.6%	4.5%	13.1%
2013							
Jan-13	1,474	74.1%	1.2%	7.3%	1.2%	3.7%	12.5%
Feb-13	1,308	75.8%	1.1%	8.0%	1.6%	2.9%	10.6%
Mar-13	1,270	73.5%	1.2%	6.7%	2.4%	3.9%	12.3%
Apr-13	1,421	77.9%	0.8%	7.4%	0.9%	3.0%	10.1%
May-13	1,320	68.4%	0.5%	10.2%	1.5%	3.8%	15.5%
Jun-13	953	69.2%	1.2%	9.4%	2.6%	5.0%	12.6%
Jul-13	1,014	66.3%	1.9%	14.4%	1.6%	3.9%	11.9%
Aug-13	1,212	70.5%	0.7%	11.8%	0.7%	4.7%	11.6%
Sep-13	1,262	64.0%	2.1%	11.3%	1.7%	6.7%	14.2%
Oct-13	1,319	61.0%	1.1%	9.0%	2.9%	7.5%	18.5%
Nov-13	1,007	49.6%	1.6%	10.3%	5.1%	10.9%	22.5%
Dec-13	1,421	64.1%	1.1%	8.6%	2.3%	8.3%	15.6%

*Other Community Sources includes the Department of Homeless Services, Family Court, FAP, Hospitals and Medical facilities, the NYC Housing Authority, PINS/DAS, Probation, and Sponsor Agencies.

Note: Beginning July 2011 Family Treatment Rehabilitation programs replaced the Family Rehabilitation programs.

Children's Center Population by Age, December 2012 – December 2013

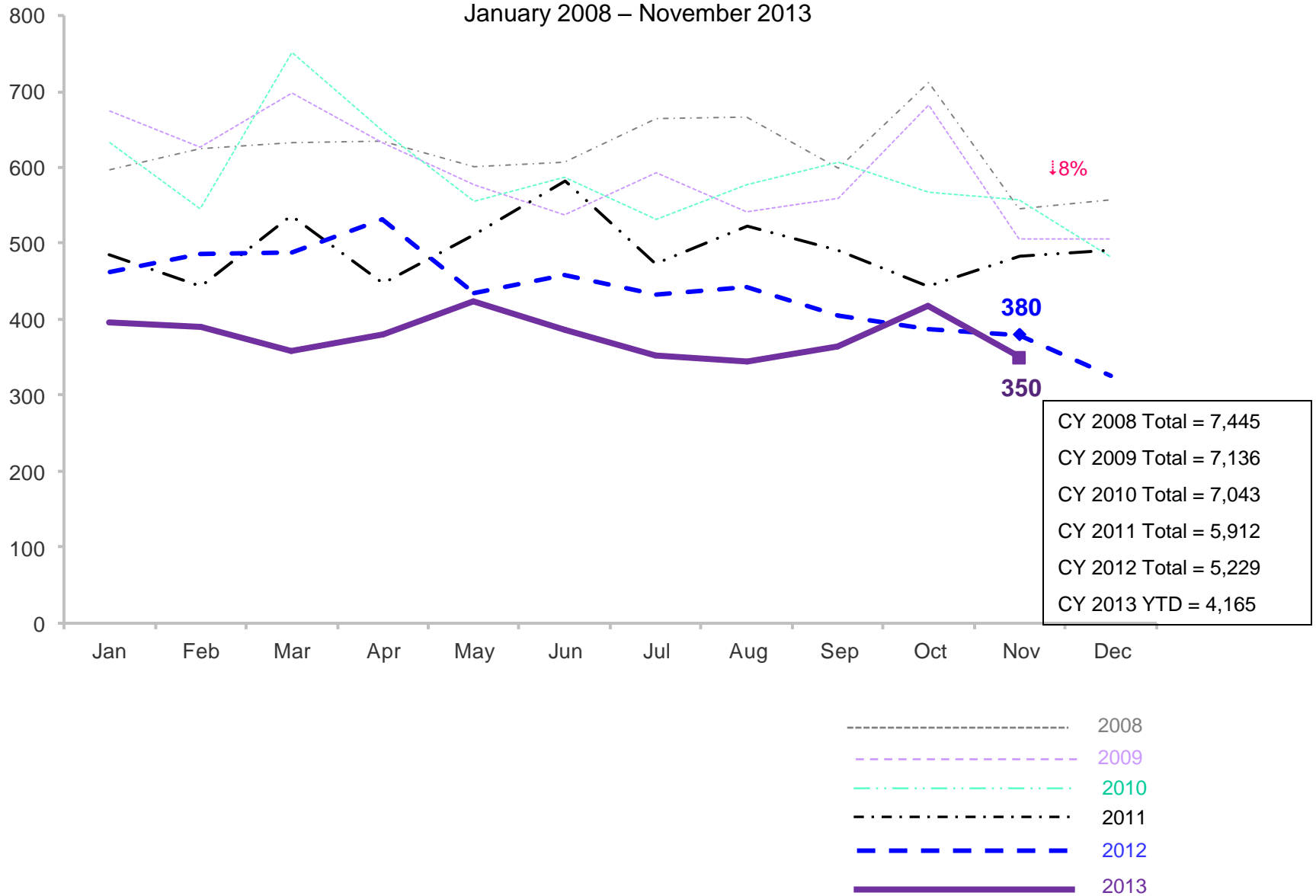


	Dec 2012	Jan 2013	Feb 2013	Mar 2013	Apr 2013	May 2013	Jun 2013	Jul 2013	Aug 2013	Sep 2013	Oct 2013	Nov 2013	Dec 2013
Number of Children	29	35	30	22	26	46	30	23	23	25	34	28	38

Note: Percentage change is December 2012 vs. December 2013.

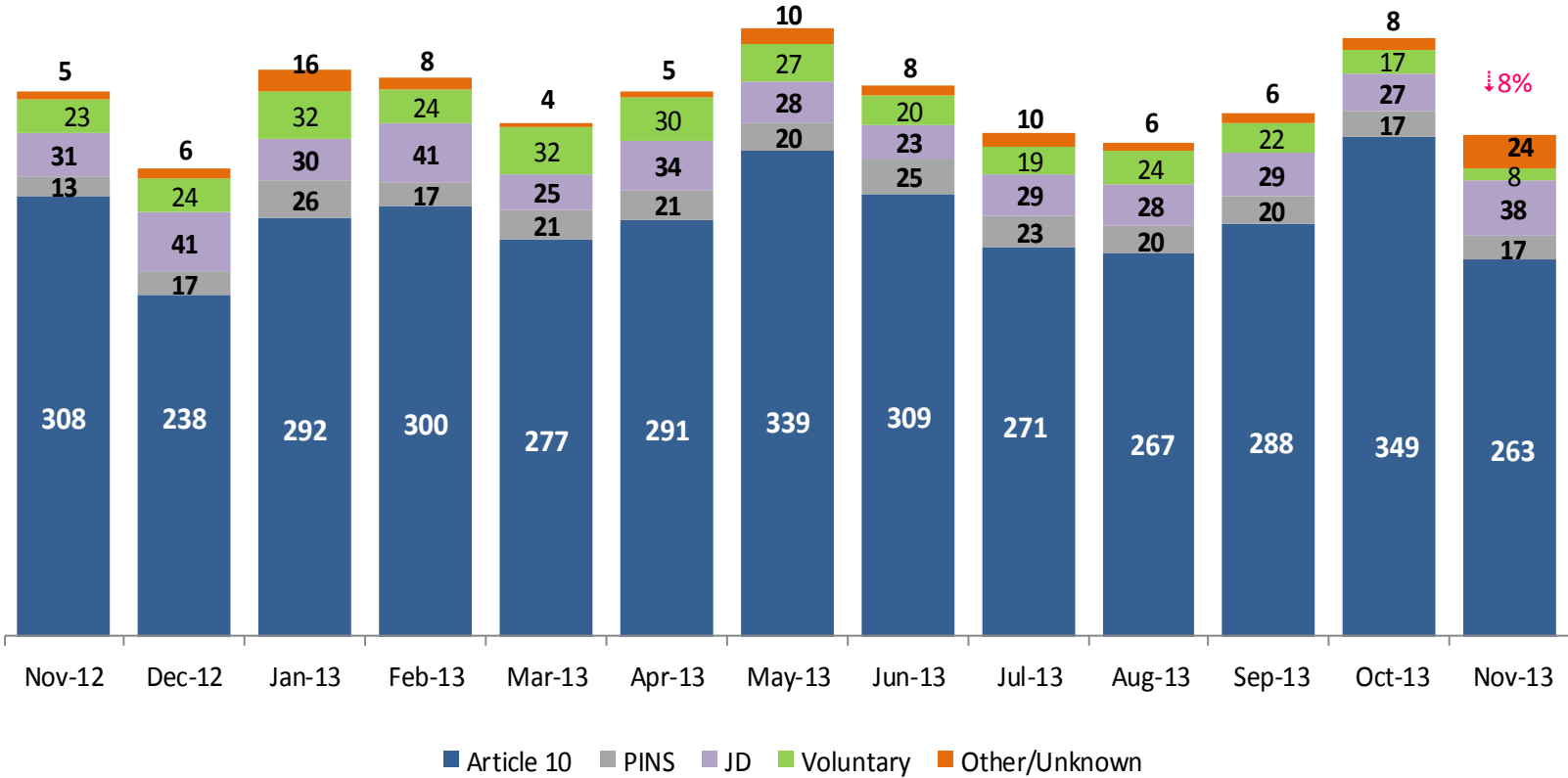
Total Monthly Placements

January 2008 – November 2013



Note: Percentage change is November 2012 vs. November 2013.

Reason for Initial Placements into Foster Care November 2012 – November 2013

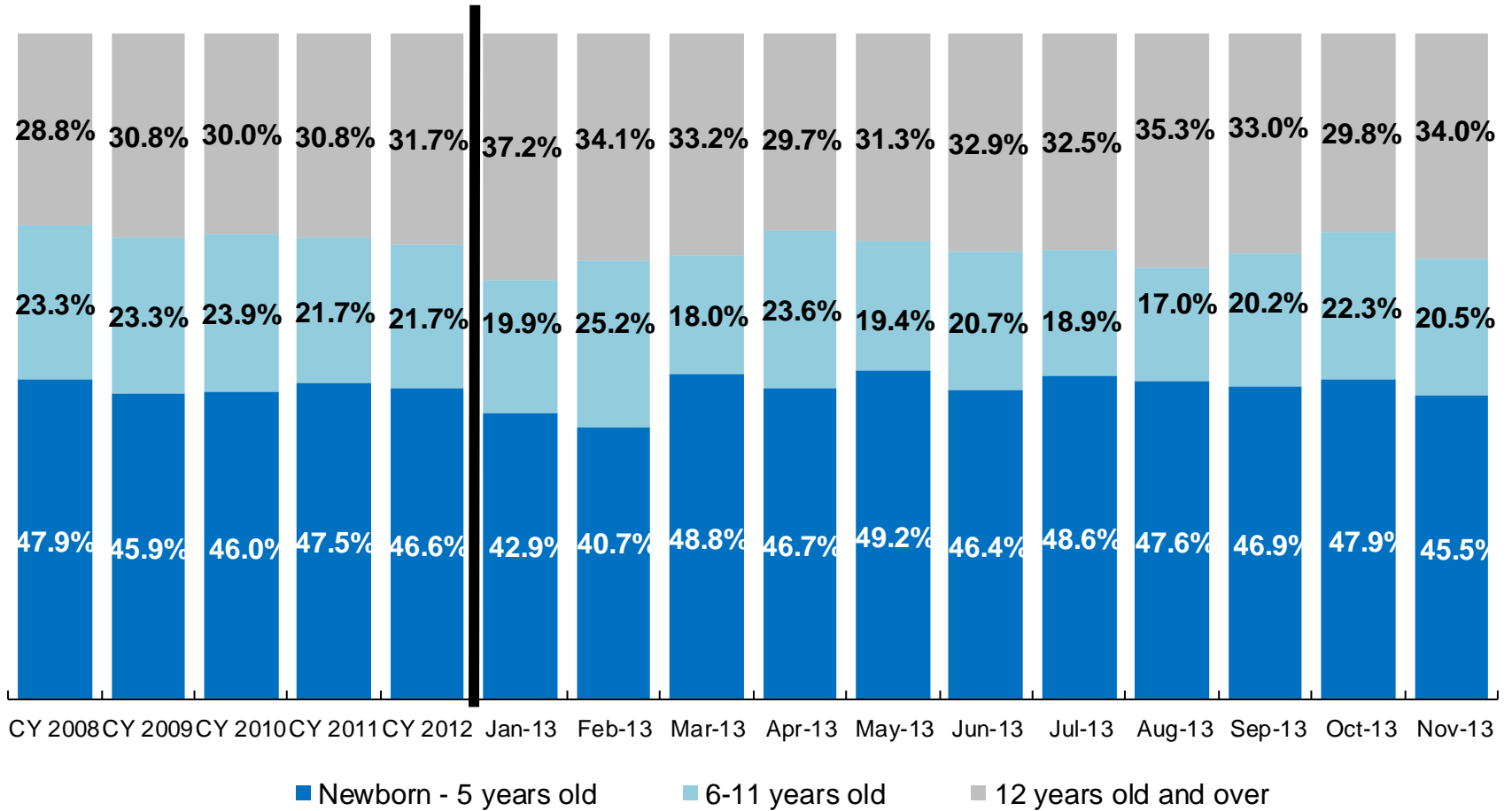


	Nov 2012	Dec 2012	Jan 2013	Feb 2013	Mar 2013	Apr 2013	May 2013	Jun 2013	Jul 2013	Aug 2013	Sep 2013	Oct 2013	Nov 2013
Number of Placements	380	326	396	390	359	381	424	385	352	345	365	418	350

Note: Percentage change is November 2012 vs. November 2013.

Placements* by Age, CY 2008 - CY 2012 and January - November 2013

↓11%

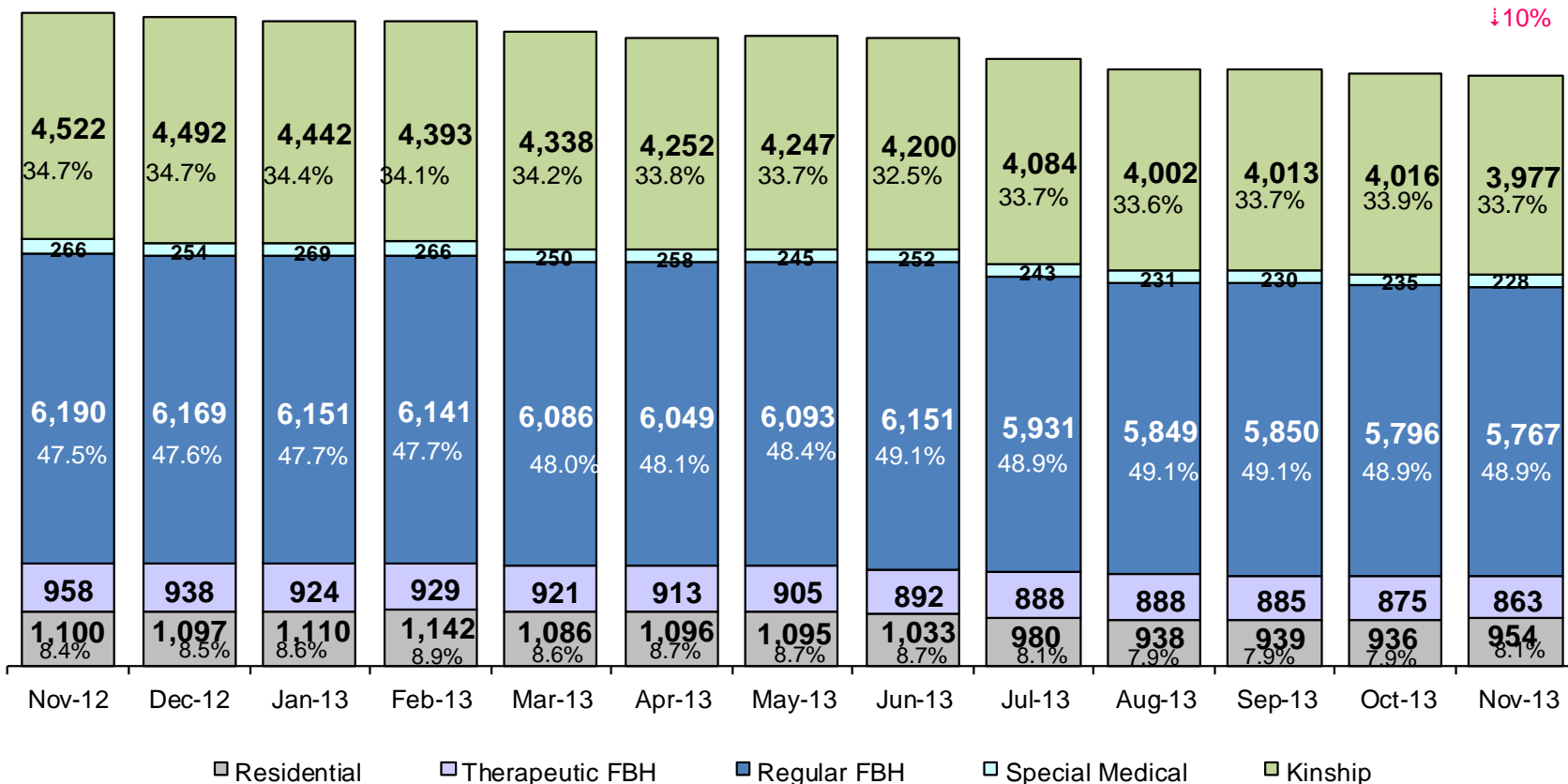


	CY 2008	CY 2009	CY 2010	CY 2011	CY 2012	Jan 2013	Feb 2013	Mar 2013	Apr 2013	May 2013	June 2013	July 2013	Aug 2013	Sep 2013	Oct 2013	Nov 2013
Placements	4,764	5,657	5,842	4,941	4,307	366	349	334	347	396	362	323	317	336	391	312

*Excludes JD placements.

Note: Percentage change is November 2012 vs. November 2013.

Children in Foster Care* (Agency-Reported, Point-in-Time) November 2012 – November 2013

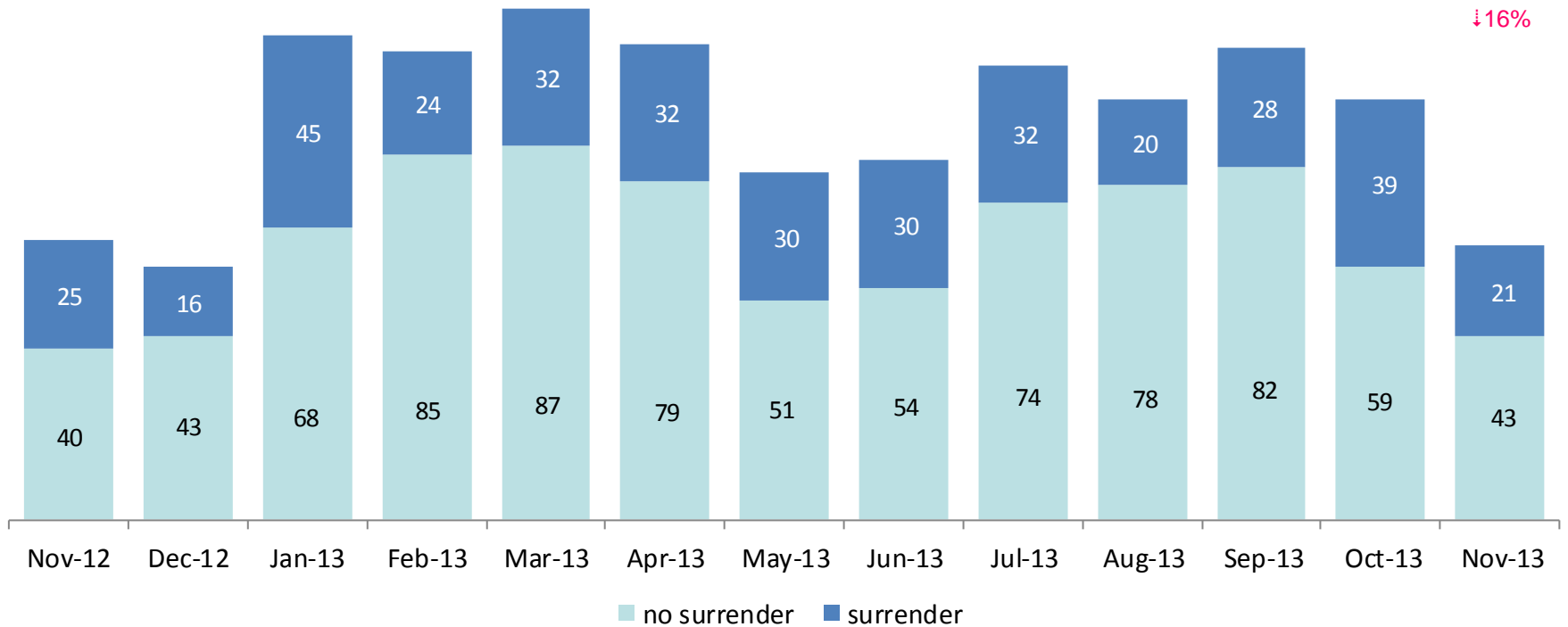


	Nov 2012	Dec 2012	Jan 2013	Feb 2013	Mar 2013	Apr 2013	May 2013	Jun 2013	Jul 2013	Aug 2013	Sep 2013	Oct 2013	Nov 2013
Number in Foster Care	13,036	12,950	12,896	12,871	12,681	12,568	12,585	12,528	12,126	11,908	11,917	11,858	11,789

*Excludes JD placements and includes approximately 400 young children who are living in foster homes or residential care facilities with their mothers who are in foster care (8D children).

Note: Percentage change is November 2012 vs. November 2013.

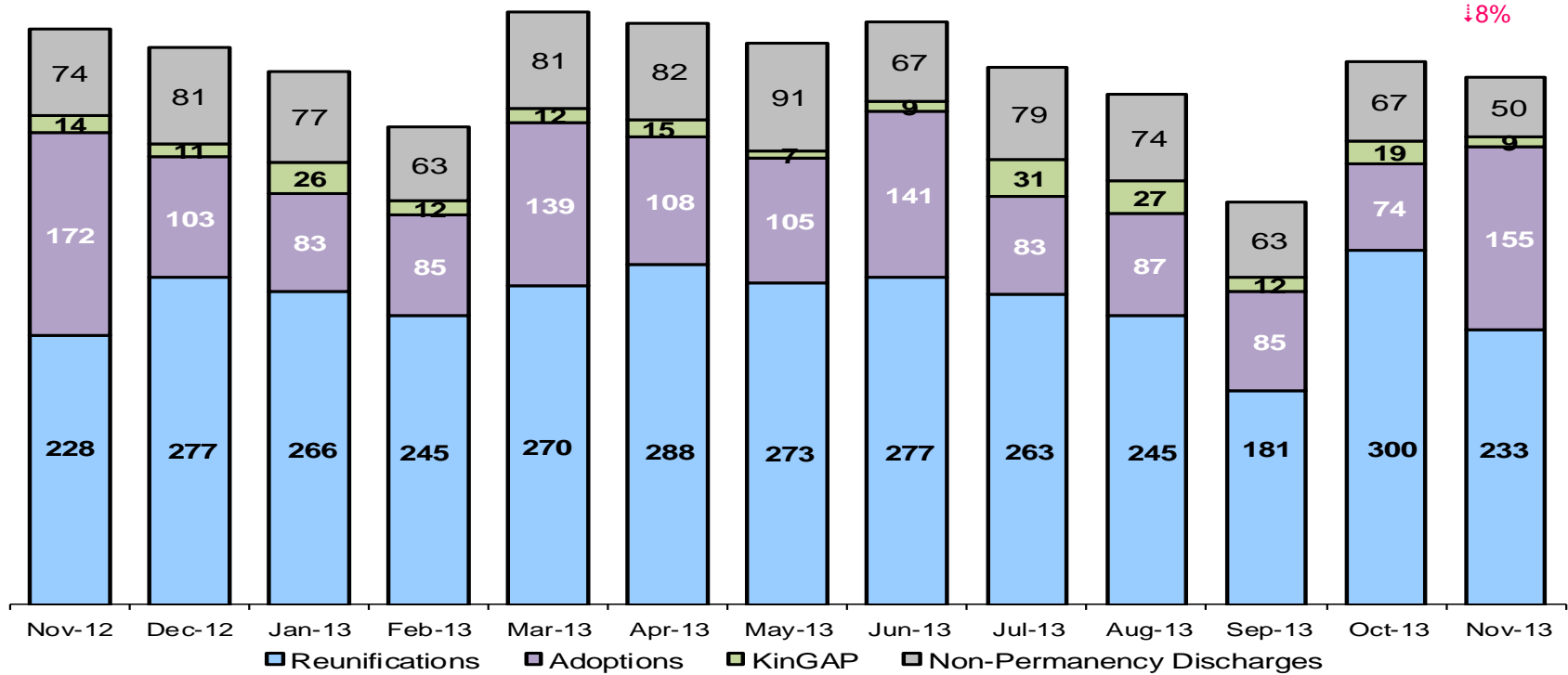
Children Freed for Adoption, Surrender by at Least One Parent, November 2012 – November 2013



	Nov 2012	Dec 2012	Jan 2013	Feb 2013	Mar 2013	Apr 2013	May 2013	Jun 2013	Jul 2013	Aug 2013	Sep 2013	Oct 2013	Nov 2013
Number Freed for Adoption	65	59	113	109	119	111	81	84	106	98	110	98	64

Note: Percentage change is for the number of children surrendered by at least on parent during November 2012 vs. November 2013.

Permanency and Non-Permanency* Discharges from Foster Care** November 2012 – November 2013



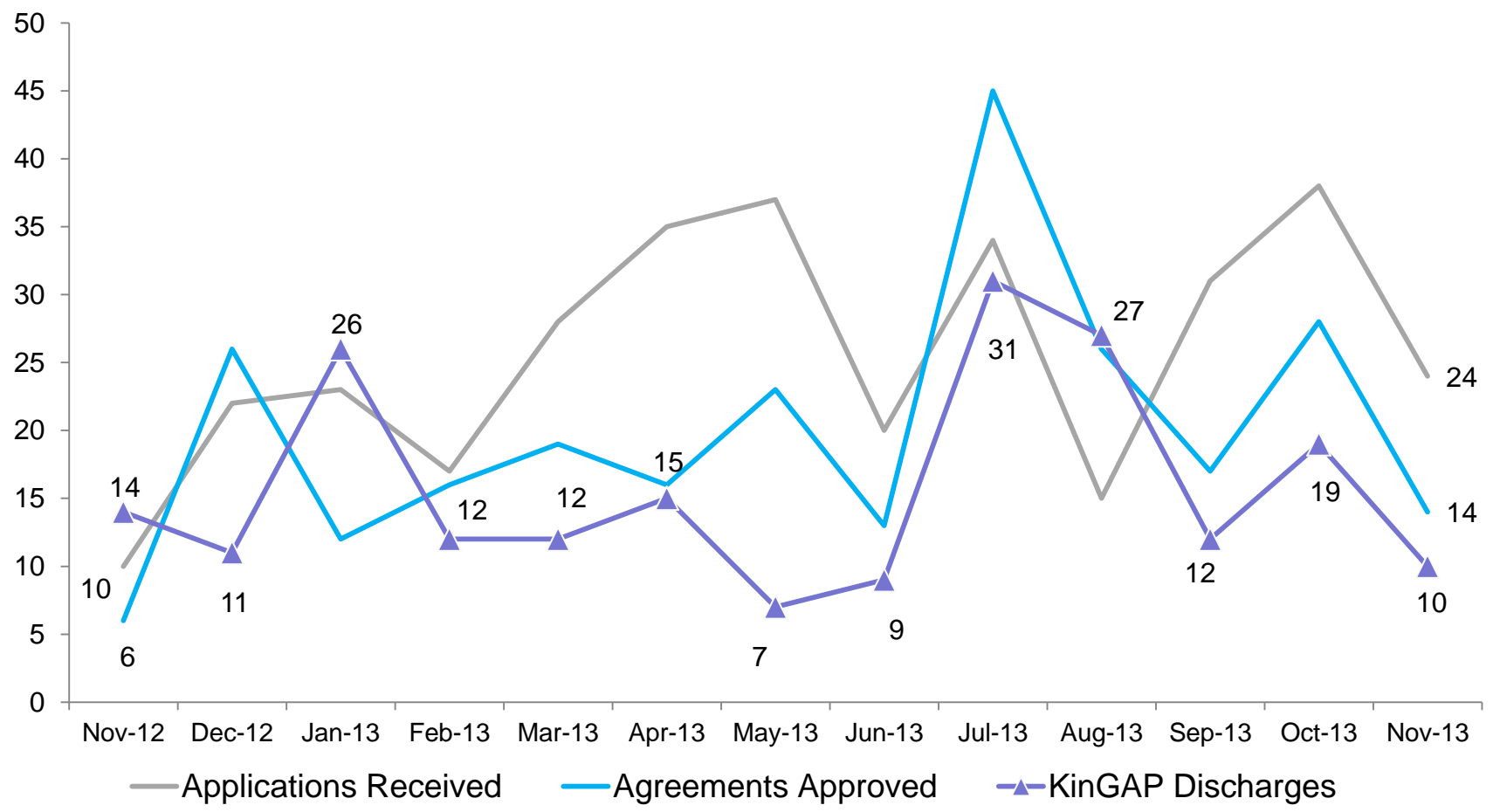
	Nov 2012	Dec 2012	Jan 2013	Feb 2013	Mar 2013	Apr 2013	May 2013	Jun 2013	Jul 2013	Aug 2013	Sep 2013	Oct 2013	Nov 2013
Number of Discharges	488	472	452	405	504	493	476	494	456	433	341	460	447

*Non-permanency discharges include AWOL, APPLA as well as other discharge destinations such as mental institutions and correctional facilities and discharges with unspecified destinations.

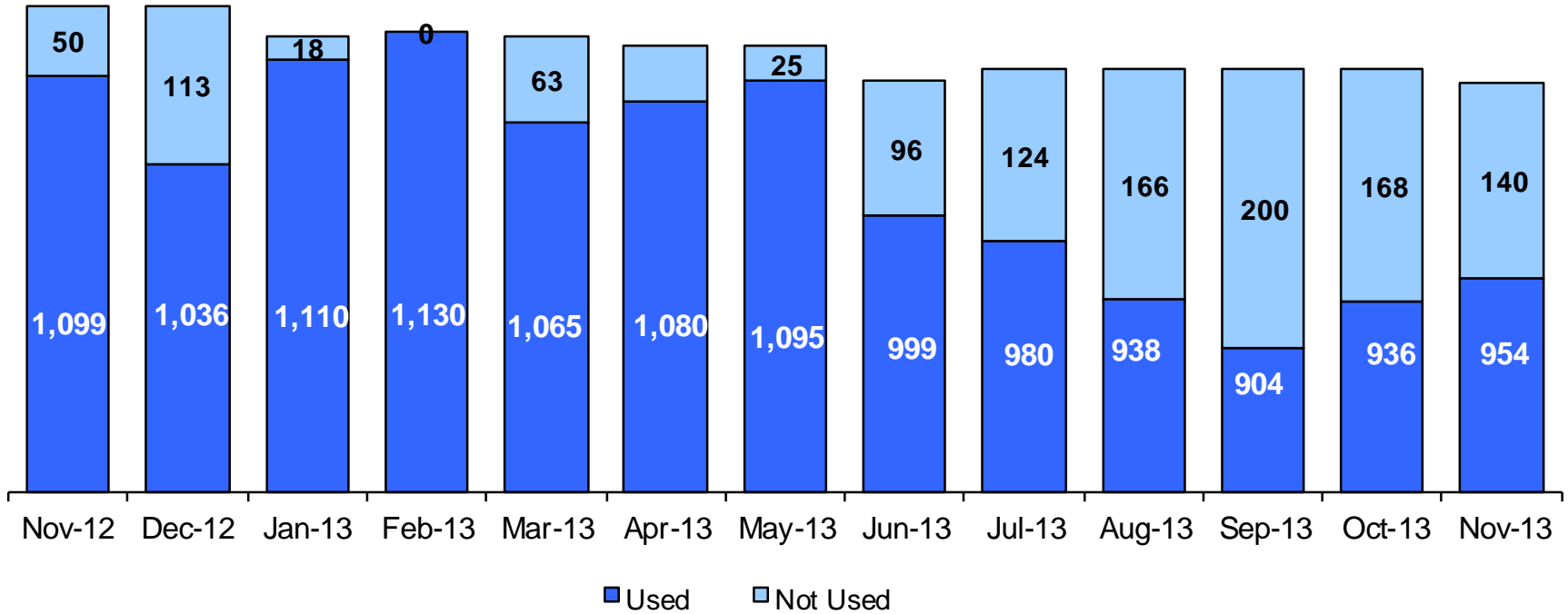
**Excludes discharges of youth who were in JD status at any time during their foster care spell.

Note: Percentage change is November 2012 vs. November 2013.

KinGAP Applications Received, Agreements Approved and Discharges, November 2012 – November 2013



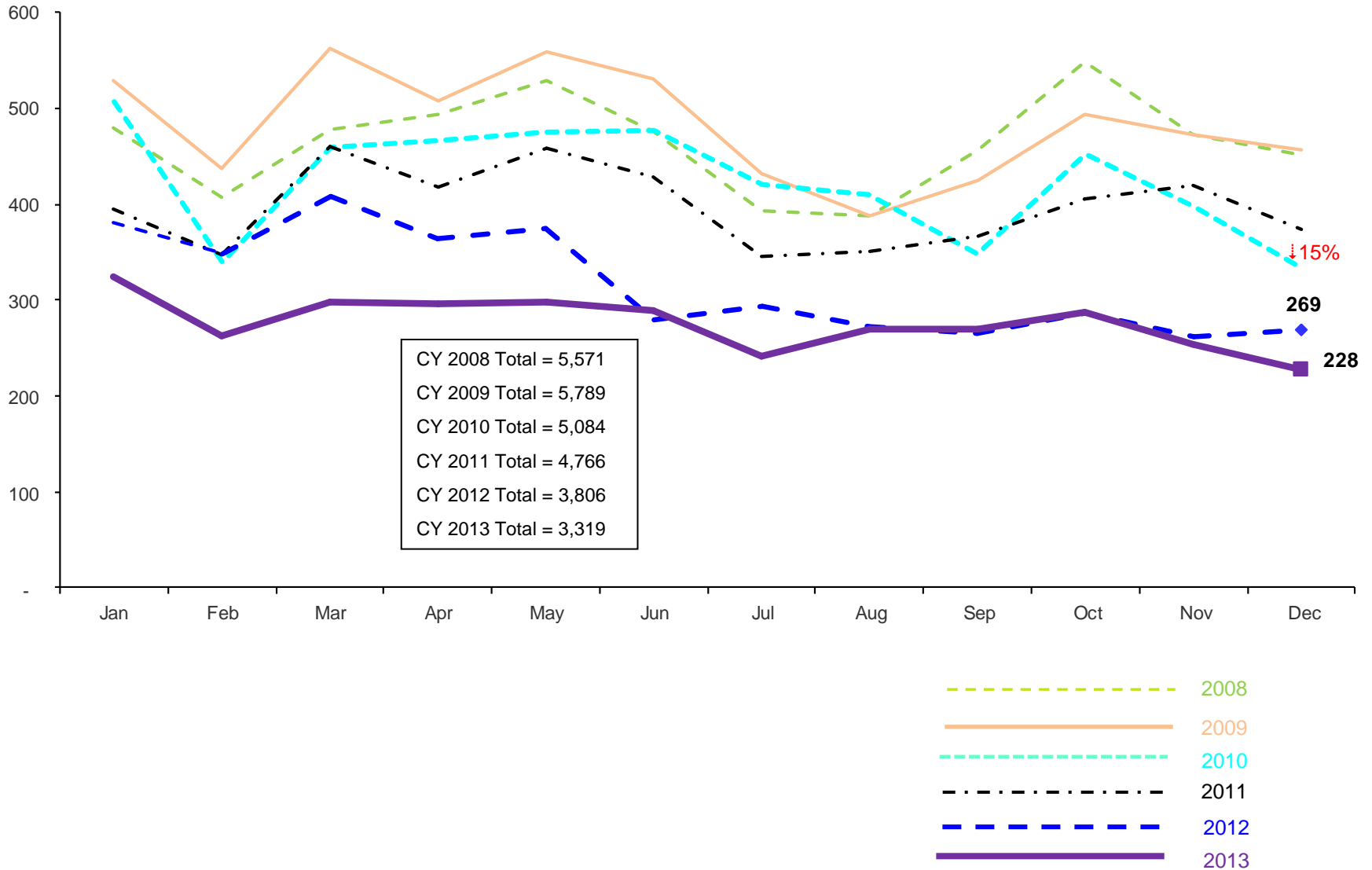
Residential Care Capacity and Utilization, November 2012 – November 2013



	Nov 2012	Dec 2012	Jan 2013	Feb 2013	Mar 2013	Apr 2013	May 2013	Jun 2013	Jul 2013	Aug 2013	Sep 2013	Oct 2013	Nov 2013
Capacity	1,149	1,149	1,128	1,128	1,128	1,120	1,120	1,095	1,104	1,104	1,104	1,104	1,094

Total Monthly Admissions to Detention

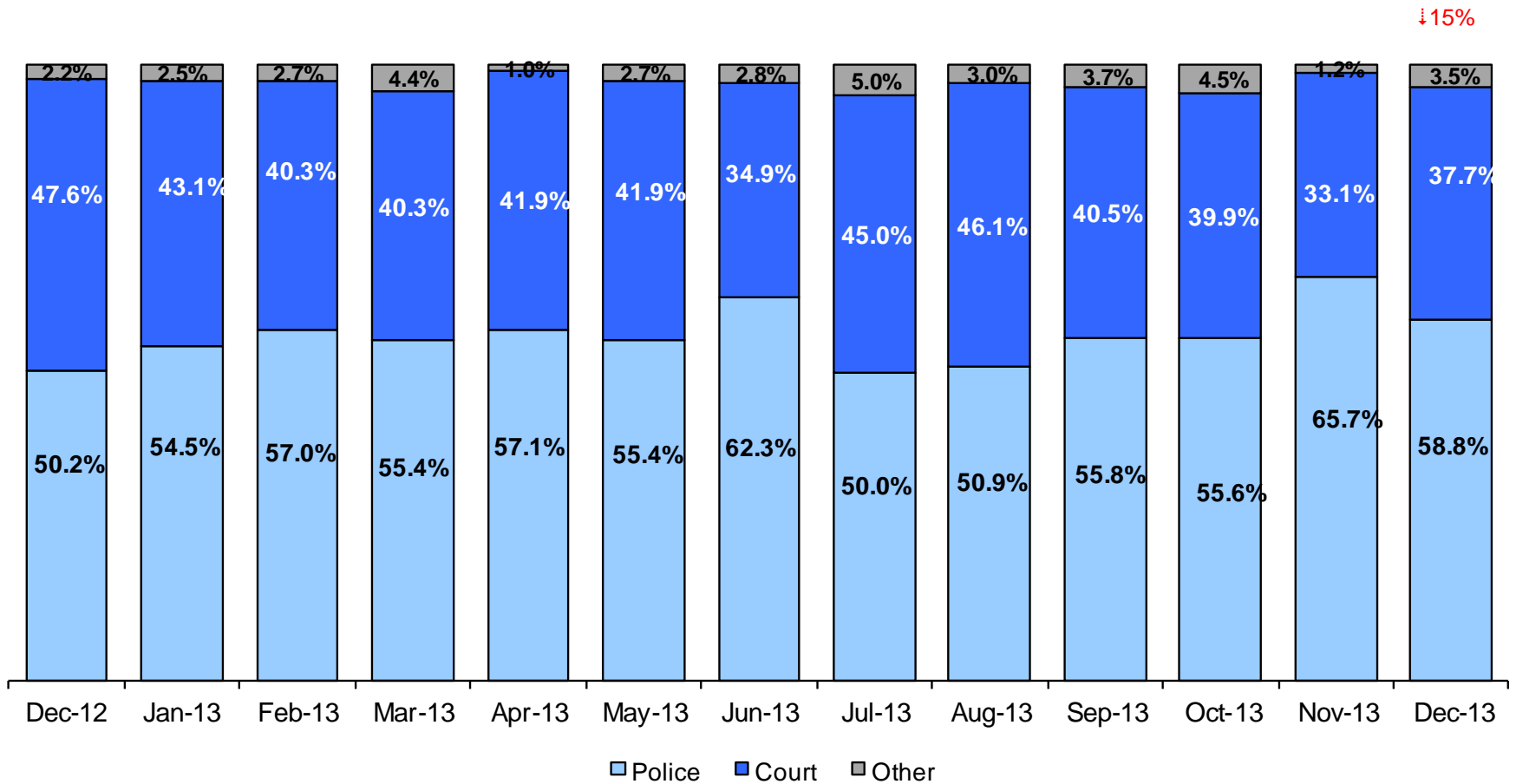
January 2008 December 2013 (Monthly Total)



Note: Percentage change for the Monthly Admissions to Detention is December 2012 vs. December 2013.

Admit Authority on Admissions

November 2012 - December 2013 (Monthly Total)

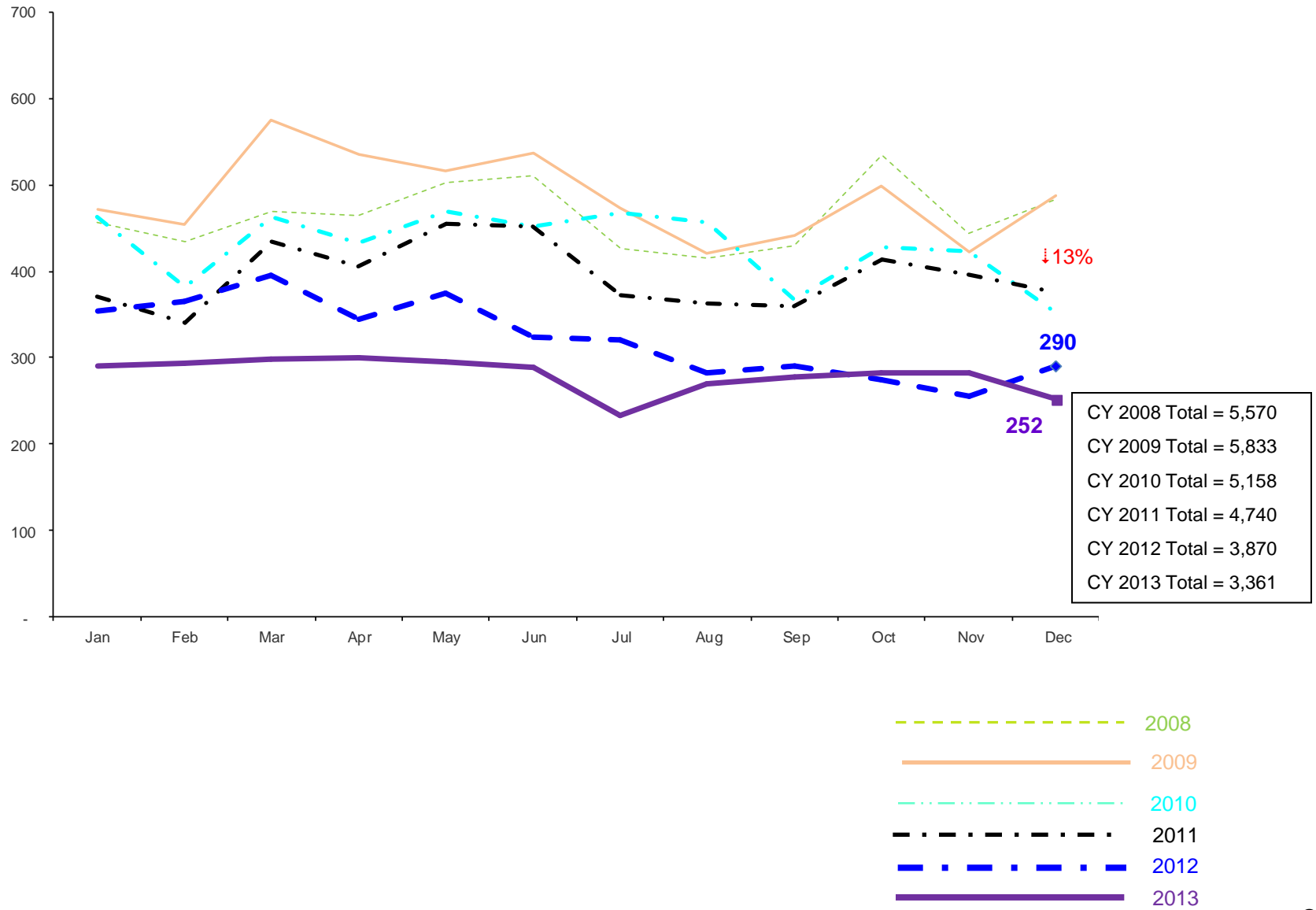


	Dec 2012	Jan 2013	Feb 2013	Mar 2013	Apr 2013	May 2013	Jun 2013	Jul 2013	Aug 2013	Sep 2013	Oct 2013	Nov 2013	Dec 2013
Number of Admissions	269	325	263	298	296	298	289	242	269	269	288	254	228

- Notes:
- 1) Percentage change is December 2012 vs. December 2013.
 - 2) Other Admit Authority includes The Sheriff Department, Department of Corrections and ACS.

Total Monthly Releases from Detention

January 2008 – December 2013 (Monthly Total)

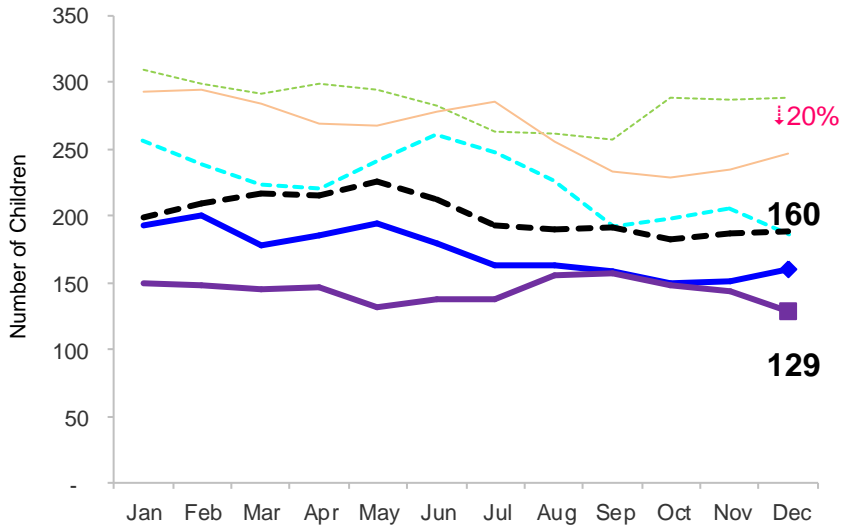


Note: Percentage change is December 2012 vs. December 2013.

Monthly Average Daily Population

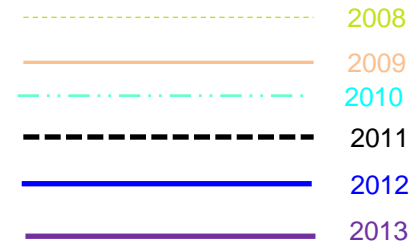
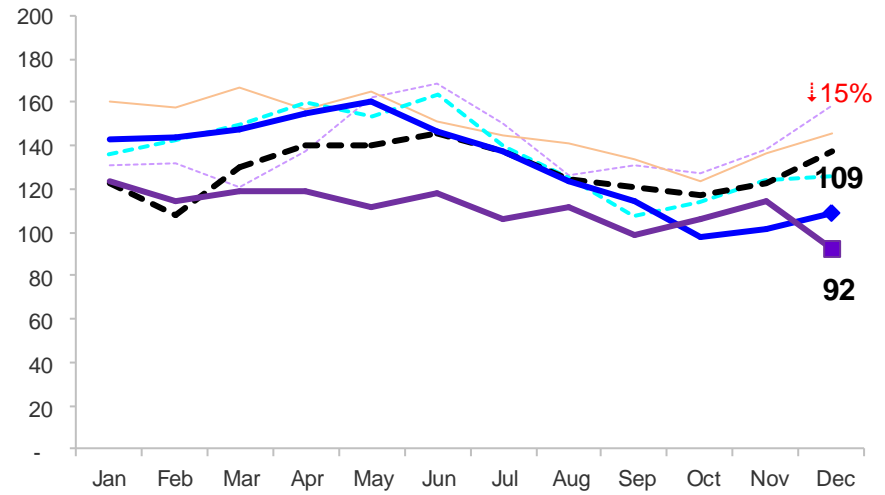
Secure Detention

January 2008 – December 2013



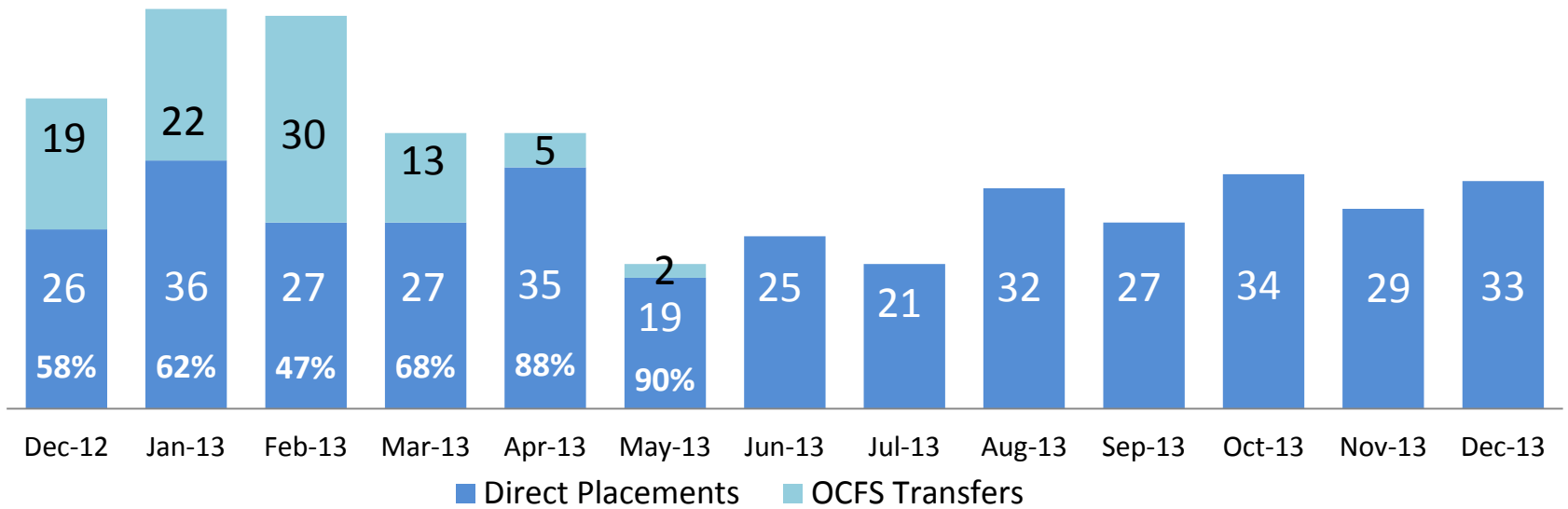
Non-Secure Detention

January 2008 – December 2013



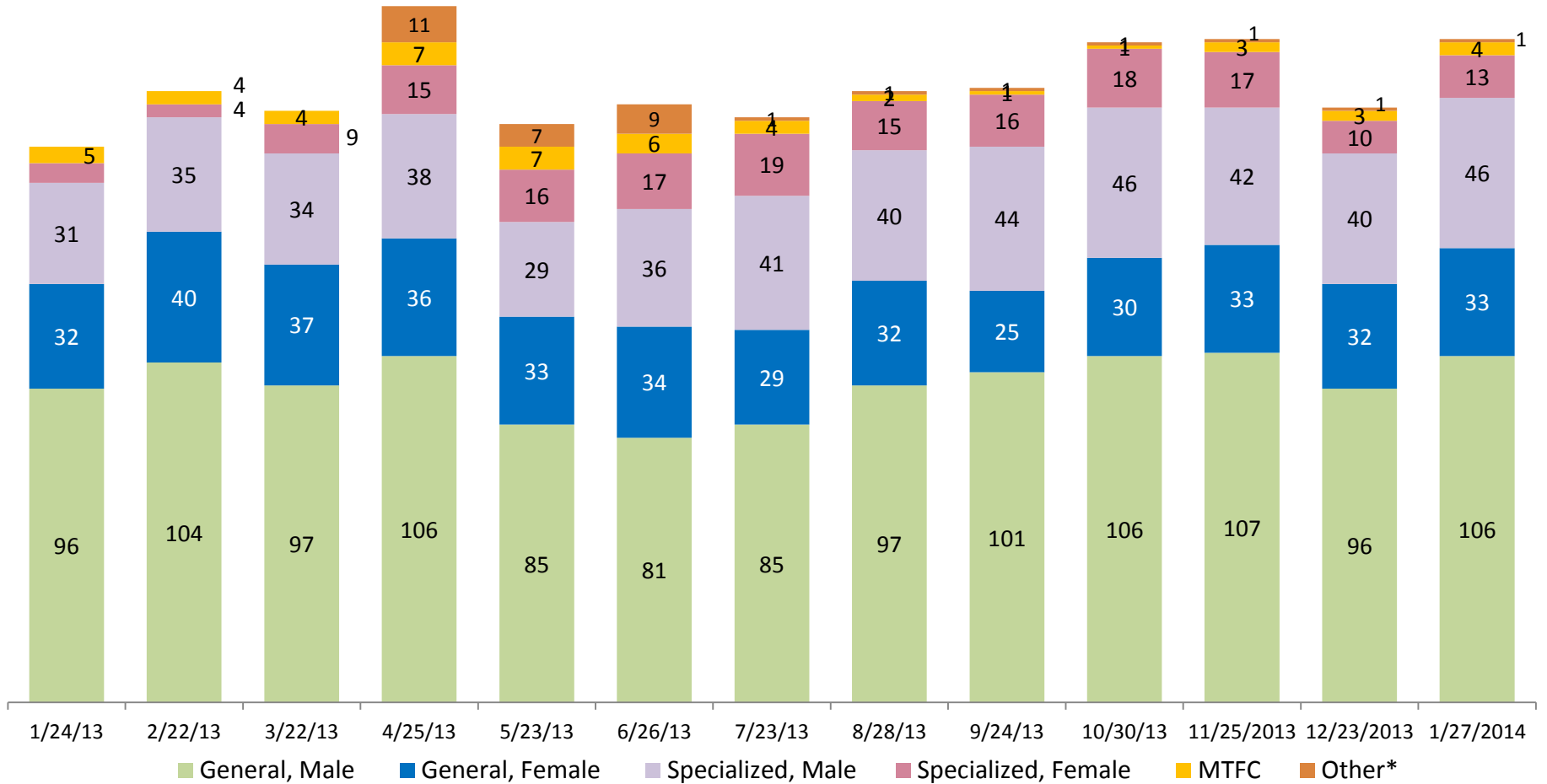
Note: Percentage change is December 2012 vs. December 2013.

ACS NSP Intakes



	Dec 2012	Jan 2013	Feb 2013	Mar 2013	Apr 2013	May 2013	Jun 2013	Jul 2013	Aug 2013	Sep 2013	Oct 2013	Nov 2013	Dec 2013
Number of Placements	45	58	57	40	40	21	25	21	32	27	34	29	33

ACS Non-Secure Placement, in 24 hour Care



	1/24/13	2/22/13	3/22/13	4/25/13	5/23/13	6/26/13	7/23/13	8/28/13	9/24/13	10/30/13	11/25/13	12/23/13	1/27/14
Number in Placement	170	187	181	213	177	183	179	187	188	202	203	182	203

*Other includes NYC youth in voluntary placements with Lincoln Hall, MercyFirst and Graham Windham.

Appendix

Figure 1: SCR Intakes by Borough in OCT 12 - DEC 12 and OCT 13 - DEC 13

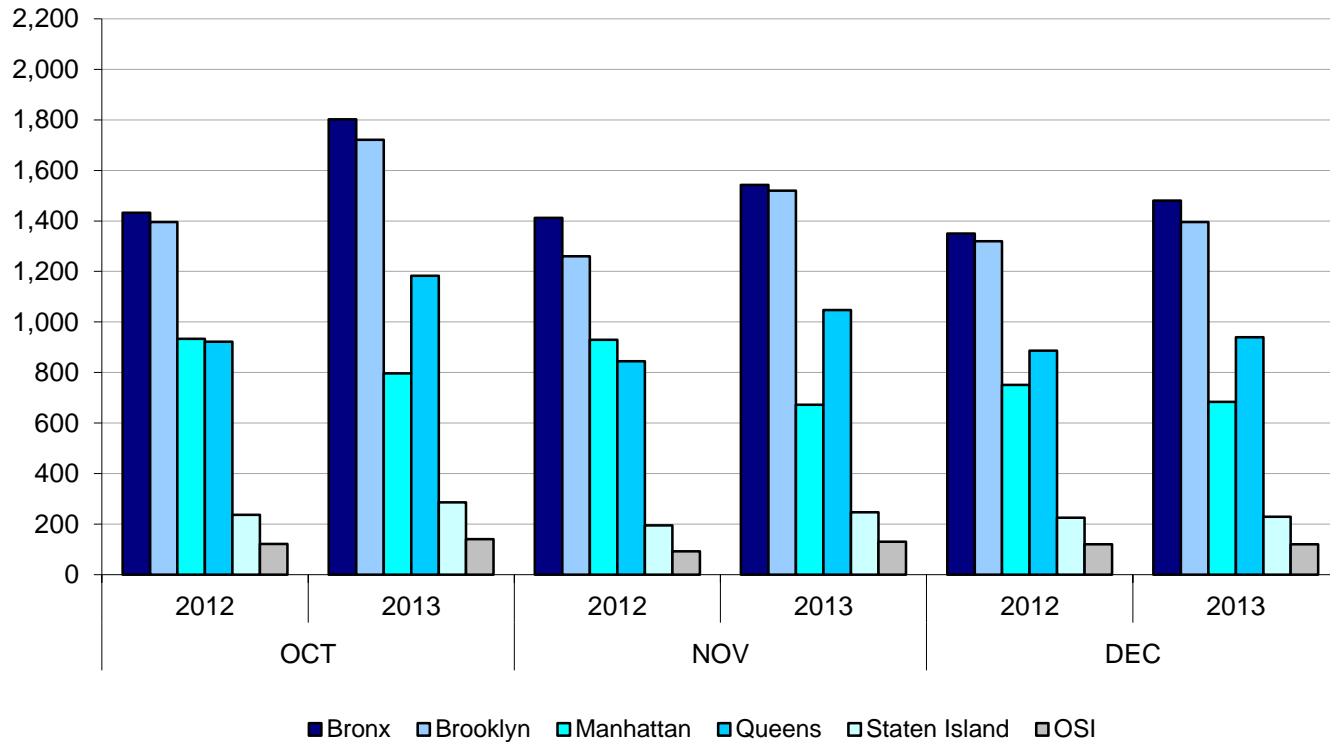


TABLE 1 - SCR Intake Changes by Borough, OCT 12 - DEC 12 and OCT 13 - DEC 13

Month	Year	Bronx	Brooklyn	Manhattan	Queens	Staten Island	OSI	Other	Total
OCT	2012	1,432	1,395	933	922	237	122	142	5,183
	2013	1,802	1,721	796	1,183	286	141	147	6,076
	% Change	25.8%	23.4%	-14.7%	28.3%	20.7%	15.6%	3.5%	17.2%
NOV	2012	1,412	1,260	930	845	195	93	119	4,854
	2013	1,543	1,520	672	1,047	247	131	132	5,292
	% Change	9.3%	20.6%	-27.7%	23.9%	26.7%	40.9%	10.9%	25.2%
DEC	2012	1,350	1,320	751	887	225	120	128	4,781
	2013	1,481	1,395	684	940	229	121	135	4,985
	% Change	9.7%	5.7%	-8.9%	6.0%	1.8%	0.8%	5.5%	4.3%
Total	2012	4,194	3,975	2,614	2,654	657	335	389	14,818
	2013	4,826	4,636	2,152	3,170	762	393	414	16,353
	% Change	15.1%	16.6%	-17.7%	19.4%	16.0%	17.3%	6.4%	10.4%

Figure 2: Citywide SCR Intakes by Reporter Group, OCT 12 - DEC 12 and OCT 13 - DEC 13

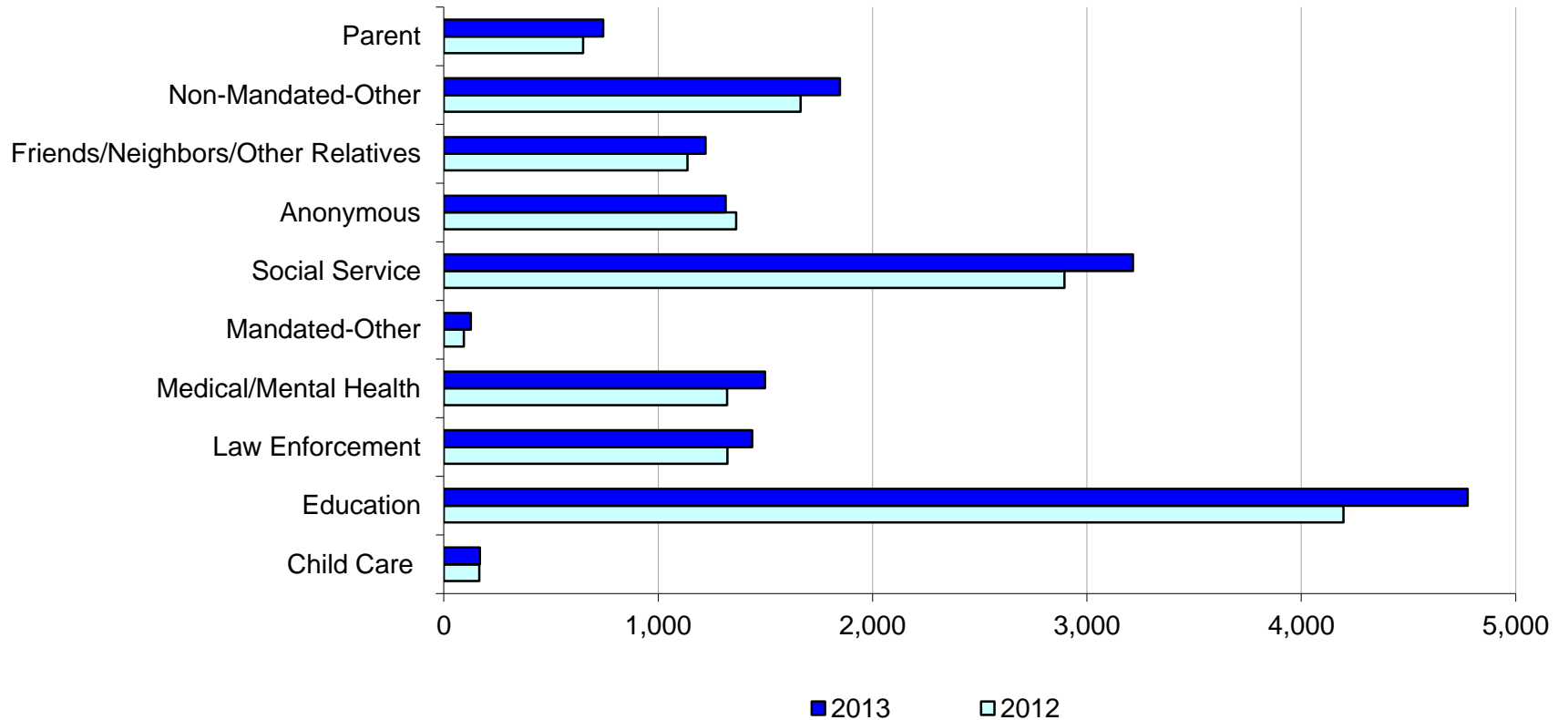
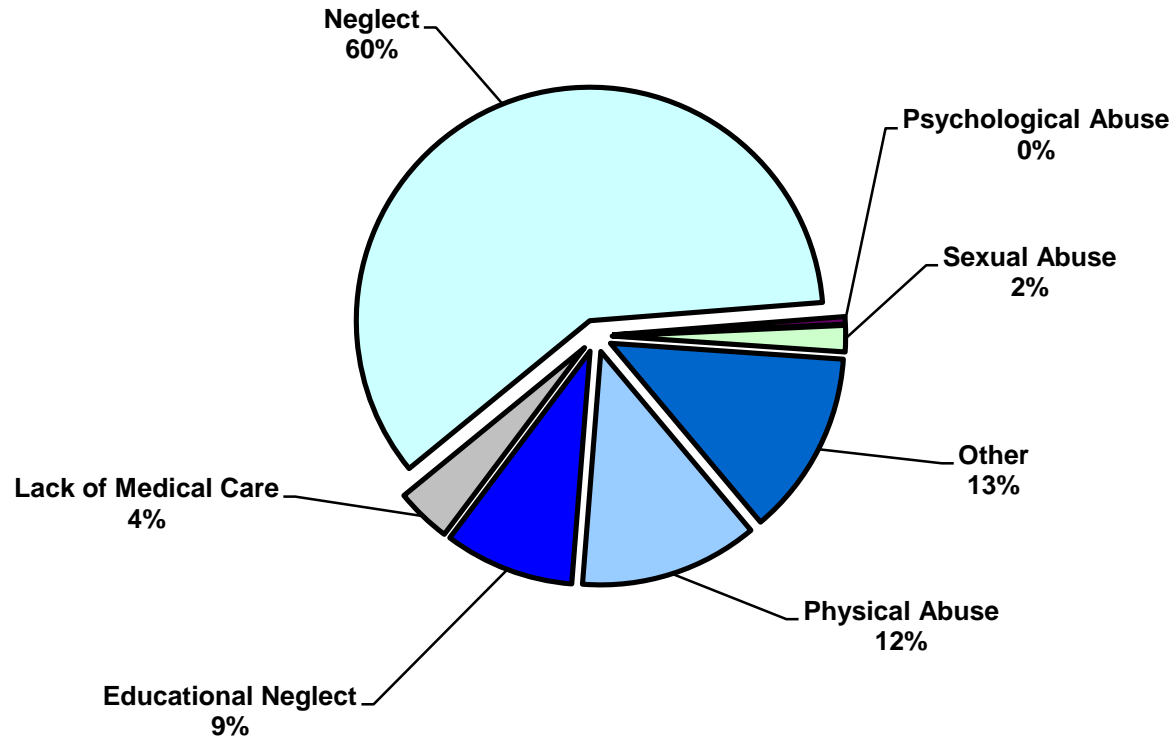


TABLE 2 - SCR Intakes by Reporter Group, OCT 12 - DEC 12 and OCT 13 - DEC 13

Year	Child Care/ Substitute Care Personnel	Educational Personnel	Law Enforcement	Medical/ Mental Health Personnel	Mandated- Other	Social Service Personnel	Anonymous	Friends/ Neighbors/ Other Relatives	Non- Mandated- Other	Parent	Foster Parent	Total
Bronx												
2012	54	1,228	329	368	23	849	363	316	497	166	1	4,194
2013	46	1,460	383	443	28	1,006	330	340	590	201	0	4,827
% Change	-14.8%	18.9%	16.4%	20.4%	21.7%	18.5%	-9.1%	7.6%	18.7%	21.1%	-100.0%	15.1%
Brooklyn												
2012	31	1,245	322	359	28	738	366	327	402	156	1	3,975
2013	51	1,382	379	403	43	855	420	394	514	196	0	4,637
% Change	64.5%	11.0%	17.7%	12.3%	53.6%	15.9%	14.8%	20.5%	27.9%	25.6%	--	16.7%
Manhattan												
2012	34	551	317	219	20	534	270	197	347	115	5	2,609
2013	20	502	231	219	16	488	157	153	280	84	1	2,151
% Change	-41.2%	-8.9%	-27.1%	0.0%	-20.0%	-8.6%	-41.9%	-22.3%	-19.3%	-27.0%	-80.0%	-17.6%
Queens												
2012	20	881	241	221	13	501	234	200	243	98	1	2,653
2013	23	1,076	299	277	24	567	259	222	295	126	1	3,169
% Change	15.0%	22.1%	24.1%	25.3%	84.6%	13.2%	10.7%	11.0%	21.4%	28.6%	--	19.4%
Staten Island												
2012	7	227	32	63	2	83	84	61	61	37	0	657
2013	5	268	55	79	4	101	92	59	56	43	0	762
% Change	-28.6%	18.1%	71.9%	25.4%	100.0%	21.7%	9.5%	-3.3%	-8.2%	16.2%	--	16.0%
OSI												
2012	16	33	13	39	4	70	21	18	81	42	0	337
2013	19	47	15	34	7	81	36	23	81	50	0	393
% Change	18.8%	42.4%	15.4%	-12.8%	75.0%	15.7%	71.4%	27.8%	0.0%	19.0%	--	16.6%
Other												
2012	3	32	69	52	3	120	25	17	33	35	0	389
2013	4	41	77	43	4	117	21	30	32	44	0	413
% Change	33.3%	28.1%	11.6%	-17.3%	33.3%	-2.5%	-16.0%	76.5%	-3.0%	25.7%	--	6.2%
Citywide												
2012	165	4,197	1,323	1,321	93	2,895	1,363	1,136	1,664	649	8	14,814
2013	168	4,776	1,439	1,498	126	3,215	1,315	1,221	1,848	744	2	16,352
% Change	1.8%	13.8%	8.8%	13.4%	35.5%	11.1%	-3.5%	7.5%	11.1%	14.6%	-75.0%	10.4%

Figure 3: SCR Allegations, OCT 13 - DEC 13



Total Allegations = 40,508

TABLE 3 - SCR Allegations, OCT 12 - DEC 12 and OCT 13 - DEC 13

Year	Physical Abuse	Educational Neglect	Lack of Medical Care	Neglect	Psychological Abuse	Sexual Abuse	Other	Total
Bronx								
2012	1,268	1,284	479	7,003	58	216	1,576	11,884
2013	1,316	1,227	521	7,252	67	217	1,536	12,136
% Change	3.8%	-4.4%	8.8%	3.6%	15.5%	0.5%	-2.5%	2.1%
Brooklyn								
2012	1,314	1,071	402	6,430	65	249	1,499	11,030
2013	1,472	1,150	434	7,083	43	216	1,440	11,838
% Change	12.0%	7.4%	8.0%	10.2%	-33.8%	-13.3%	-3.9%	7.3%
Manhattan								
2012	517	426	171	2715	27	70	627	4,553
2013	497	410	180	2750	20	80	581	4,518
% Change	-3.9%	-3.8%	5.3%	1.3%	-25.9%	14.3%	-7.3%	-0.8%
Queens								
2012	983	552	199	4,103	52	118	909	6,916
2013	1,107	477	264	4,312	58	122	956	7,296
% Change	12.6%	-13.6%	32.7%	5.1%	11.5%	3.4%	5.2%	5.5%
Staten Island								
2012	231	173	79	1,147	8	25	322	1,985
2013	203	180	56	1,129	13	45	308	1,934
% Change	-12.1%	4.0%	-29.1%	-1.6%	62.5%	80.0%	-4.3%	-2.6%
OSI								
2012	267	54	63	1,174	8	45	212	1,823
2013	307	56	55	1,009	4	35	154	1,620
% Change	15.0%	3.7%	-12.7%	-14.1%	-50.0%	-22.2%	-27.4%	-11.1%
Other								
2012	108	49	26	552	6	41	164	946
2013	107	147	40	635	4	22	211	1,166
% Change	-0.9%	200.0%	53.8%	15.0%	-33.3%	-46.3%	28.7%	23.3%
Citywide								
2012	4,688	3,609	1,419	23,124	224	764	5,309	39,137
2013	5,009	3,647	1,550	24,170	209	737	5,186	40,508
% Change	6.8%	1.1%	9.2%	4.5%	-6.7%	-3.5%	-2.3%	3.5%

**TABLE 6 - Purchased Preventive Cases Opened and Closed
January 2011 to December 2013**

Month	Opened Cases	Closed Cases
2011		
Jan-11	728	550
Feb-11	824	700
Mar-11	939	890
Apr-11	685	964
May-11	682	1,195
Jun-11	660	1,118
Jul-11	692	1,108
Aug-11	807	1,001
Sep-11	660	876
Oct-11	708	910
Nov-11	695	836
Dec-11	780	827
CY 2011	8,860	10,975
2012		
Jan-12	870	629
Feb-12	889	835
Mar-12	944	991
Apr-12	997	870
May-12	1,117	979
Jun-12	965	869
Jul-12	853	979
Aug-12	917	1,007
Sep-12	727	900
Oct-12	875	915
Nov-12	738	702
Dec-12	938	871
2013		
Jan-13	960	884
Feb-13	873	916
Mar-13	962	1,171
Apr-13	940	988
May-13	864	1,337
Jun-13	863	780
Jul-13	868	1,004
Aug-13	802	1,084
Sep-13	844	724
Oct-13	933	765
Nov-13	903	685
Dec-13	1,067	552