



September 2009

# New Patient Pavilion Steel Topping Out Ceremony

## The Modernization Project at Harlem Hospital Center



Our Vision for the Future

The Harlem Hospital Center Major Modernization Project will construct a new patient pavilion on Lenox Avenue that will connect the Martin Luther King, Jr. Pavilion to the Ron Brown Ambulatory Care Pavilion creating one united healthcare complex.

Also planned were the renova-

due to a \$47 million cut in the project's capital budget.

The New Patient Pavilion will include a new emergency department, surgery department, diagnostic and treatment services, a critical care suite and a modern radiology center.

The Major Modernization Project

tions of the inpatient floors of the existing Martin Luther King, Jr. Pavilion, however, this plan is currently being held in

abeyance which includes demolishing antiquated buildings, will unify the hospital campus which currently comprises seven buildings over two blocks, construct a new 300 car parking garage for use by the hospital community; build a new FDNY Emergency Medical Service garage, and provide an overall patient friendly and staff efficient environment. Included in the modernization for Harlem Hospital Center is the restoration of priceless WPA-era art murals, which were housed in the existing Harlem Hospital Center campus.

The renovation will revitalize the facility with a new image that will be an attractive addition to the Harlem Community.

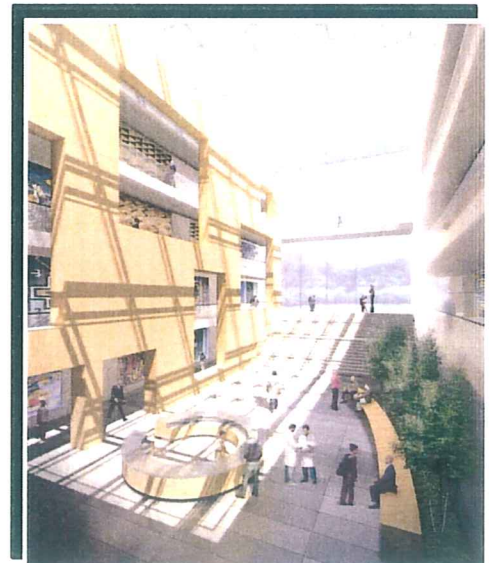
## New Patient Pavilion Steel Topping Out Ceremony

Harlem Hospital Center will celebrate a significant milestone of the \$281.7 million Modernization Project with a topping out ceremony on Thursday, September 17, 2009 at 2:00 p.m. The event will mark the completion of the structural steel erection for the New Patient Pavilion. The ceremony will be held at the site of the New Patient Pavilion on Lenox Avenue near 136<sup>th</sup> Street where distinguished guests, colleagues, and friends will celebrate the occasion.

A topping ceremony is a tradition in the construction industry and is celebrated when a project's "crown" is placed on the building's highest point. Invited guests will observe the final steel beam hoisted

by a tower crane to its new home atop of the 192,000-square-foot, seven-story building. The white steel beam will bear the autographs of attendees and an American flag.

Upon completion in 2012, the New Patient Pavilion will integrate the inpatient, emergency room, and outpatient services. The new atrium lobby will link major components of the campus, the Martin Luther King, Jr. Pavilion and the Ronald H. Brown Ambulatory Care Pavilion, creating a centerpiece for the complex that will continue the Hospital's tradition of world class patient-centered care and customer service.



Artist's Rendering  
New Patient Pavilion Lobby and Atrium