



YELLOWSTONE BLVD AND AUSTIN STREET

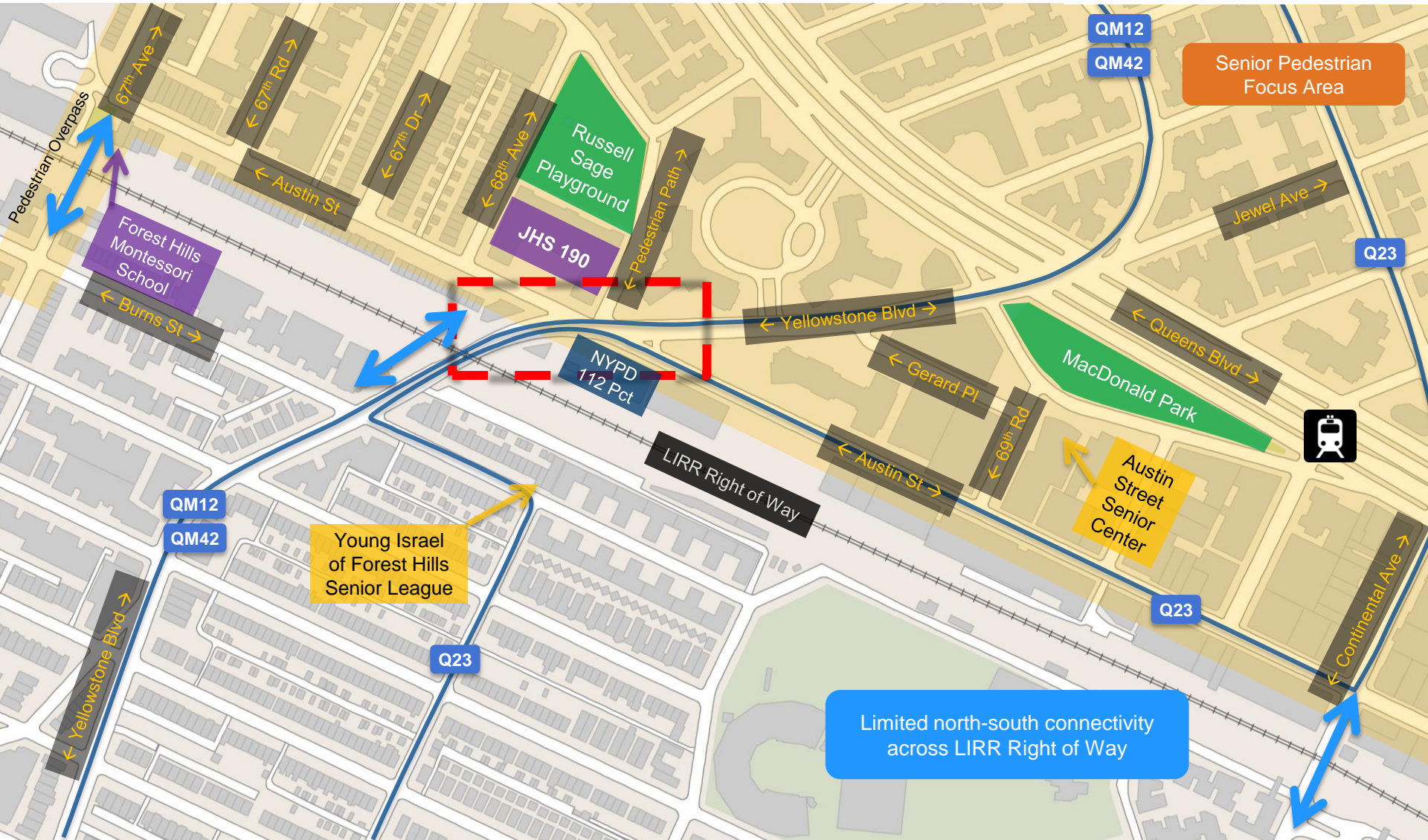
School Safety Improvements

Presentation to CB 6

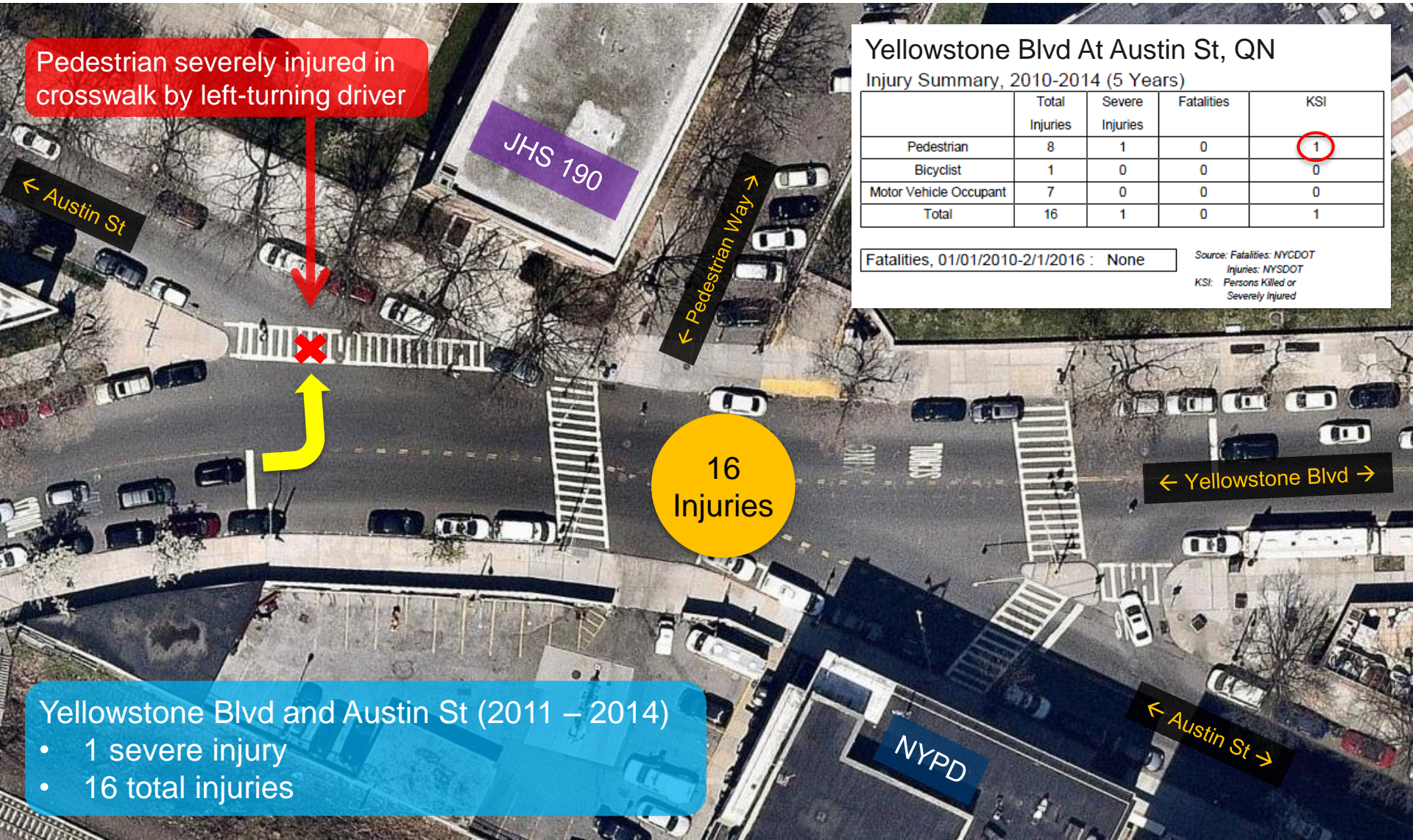
April 20, 2017



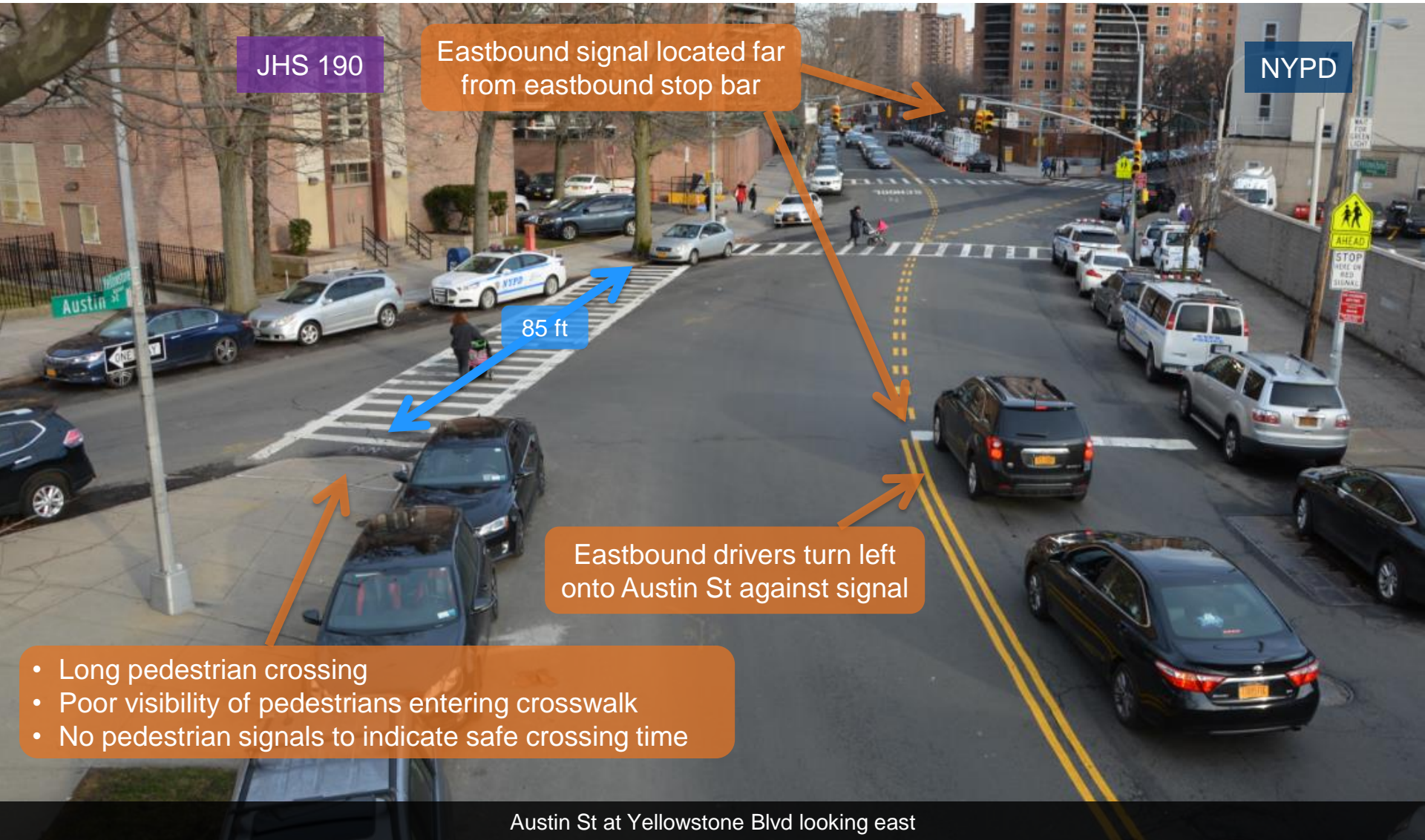
PROJECT AREA



SAFETY DATA: PROJECT NEED



EXISTING CONDITIONS



JHS 190

Eastbound signal located far from eastbound stop bar

NYPD

85 ft

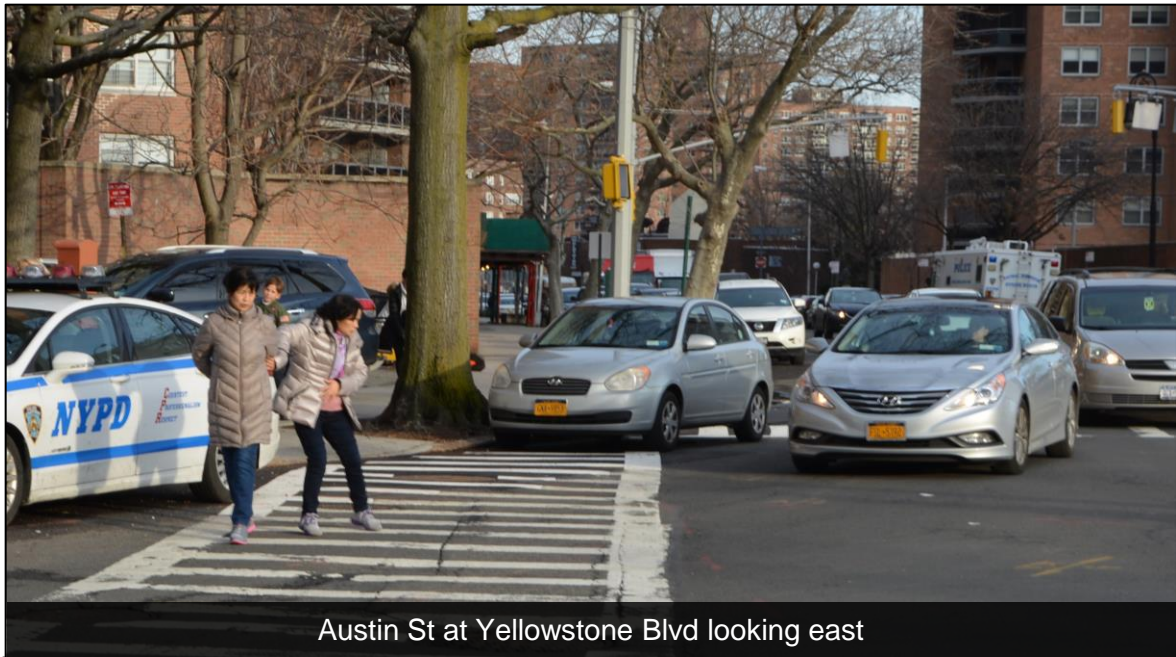
Eastbound drivers turn left onto Austin St against signal

- Long pedestrian crossing
- Poor visibility of pedestrians entering crosswalk
- No pedestrian signals to indicate safe crossing time

Austin St at Yellowstone Blvd looking east

EXISTING CONDITIONS

- Skewed intersection geometry and illegal parking reduces visibility between pedestrians and drivers
- No pedestrian signals to indicate crossing time



EXISTING CONDITIONS



EXISTING CONDITIONS

Triangle does not provide adequate space for pedestrians to wait



Austin St at Yellowstone Blvd looking north

SAFETY IMPROVEMENT REQUESTS



Traffic calming on Austin St requested by 112th Precinct

Crosswalk safety improvements requested in front of JHS 190 by CB 6

Safety improvements to prevent illegal left turns requested by community and 112th Precinct

Parking lane stripes to organize traffic, requested by 112th Precinct

PROPOSAL

- Expand Pedestrian Island
- Increase Crossing Time

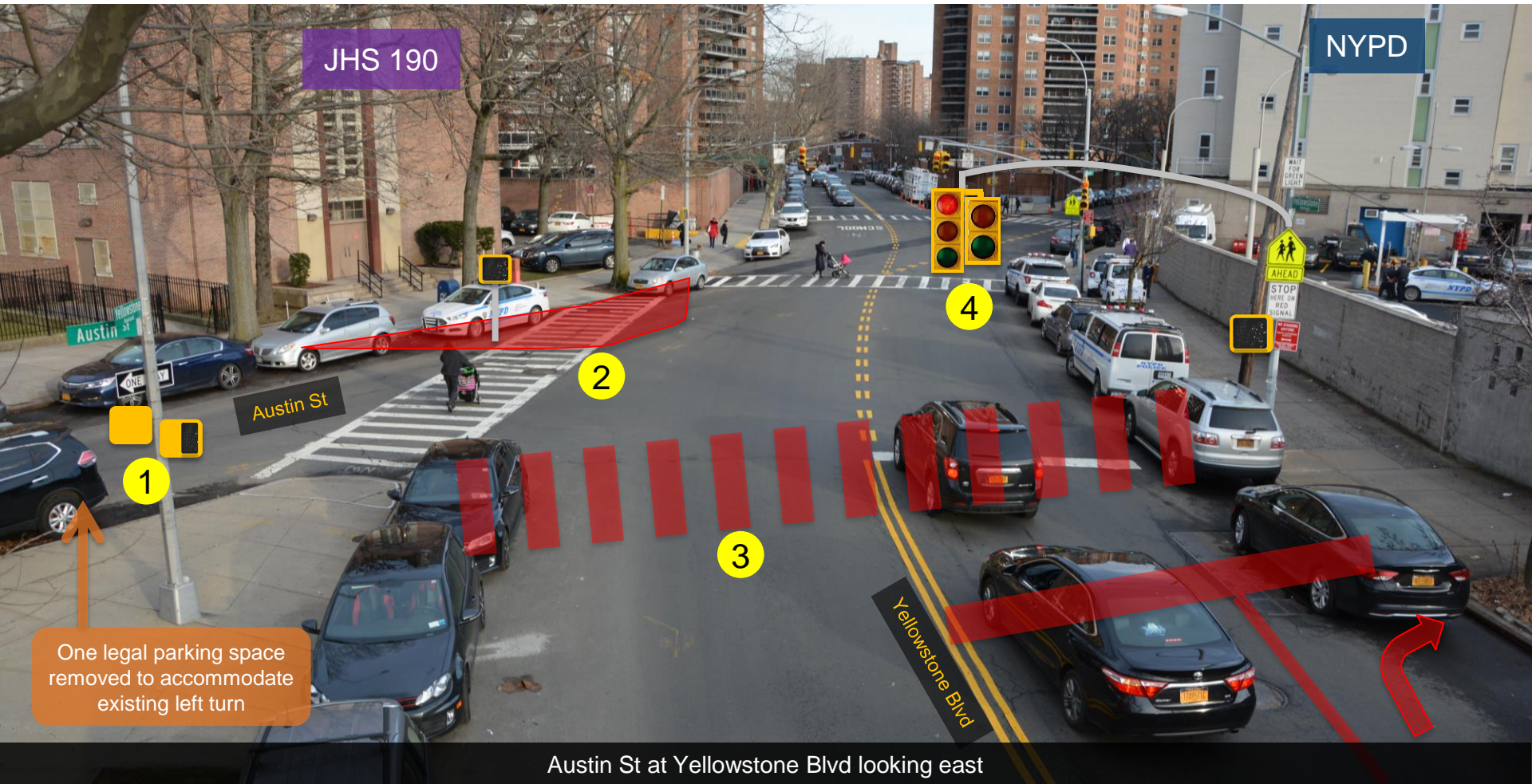


Austin St at Yellowstone Blvd looking east

PROPOSAL

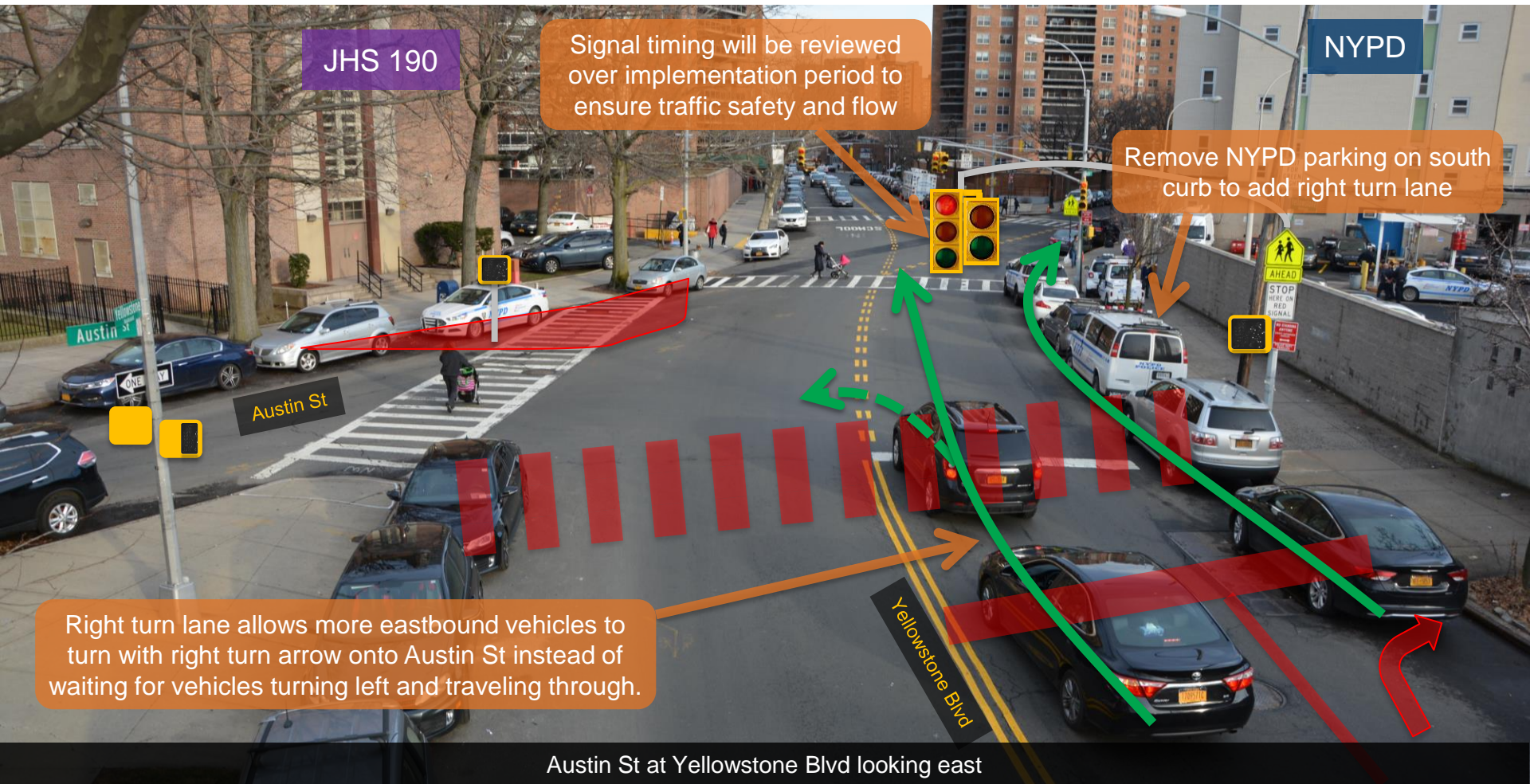
- Install Curb Extension
- Add New Crosswalk

1. Add pedestrian signals to crossing in front of JHS 190 and increase crossing time
2. Install concrete curb extension in front of JHS 190 to increase visibility, shorten pedestrian crossing and control vehicle turns.
3. Add new crosswalk on west leg of intersection to accommodate desire lines
4. Install additional traffic signal to increase visibility of stop control



PROPOSAL

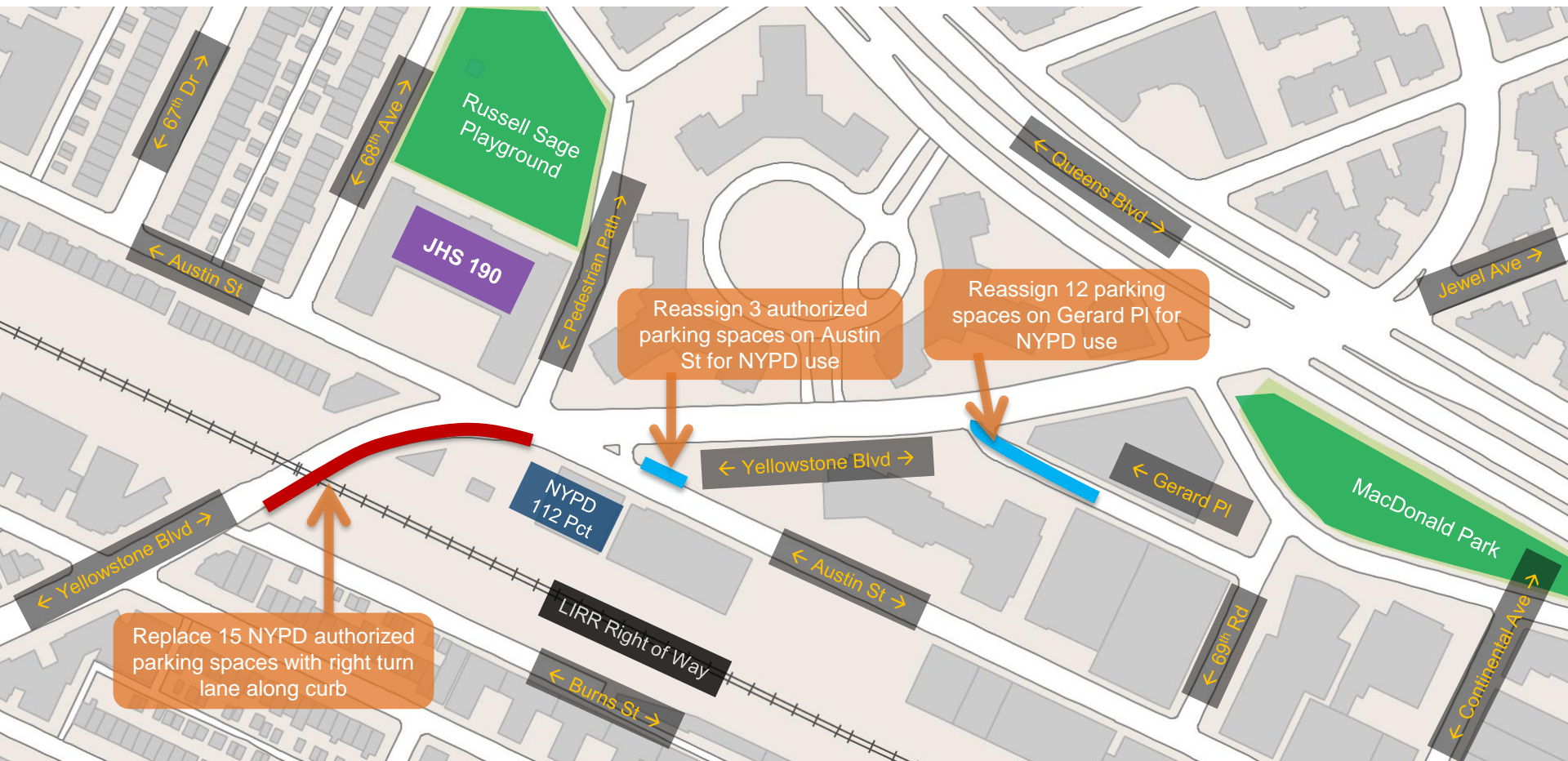
- Add right turn lane for eastbound Yellowstone Blvd to Austin St



Austin St at Yellowstone Blvd looking east

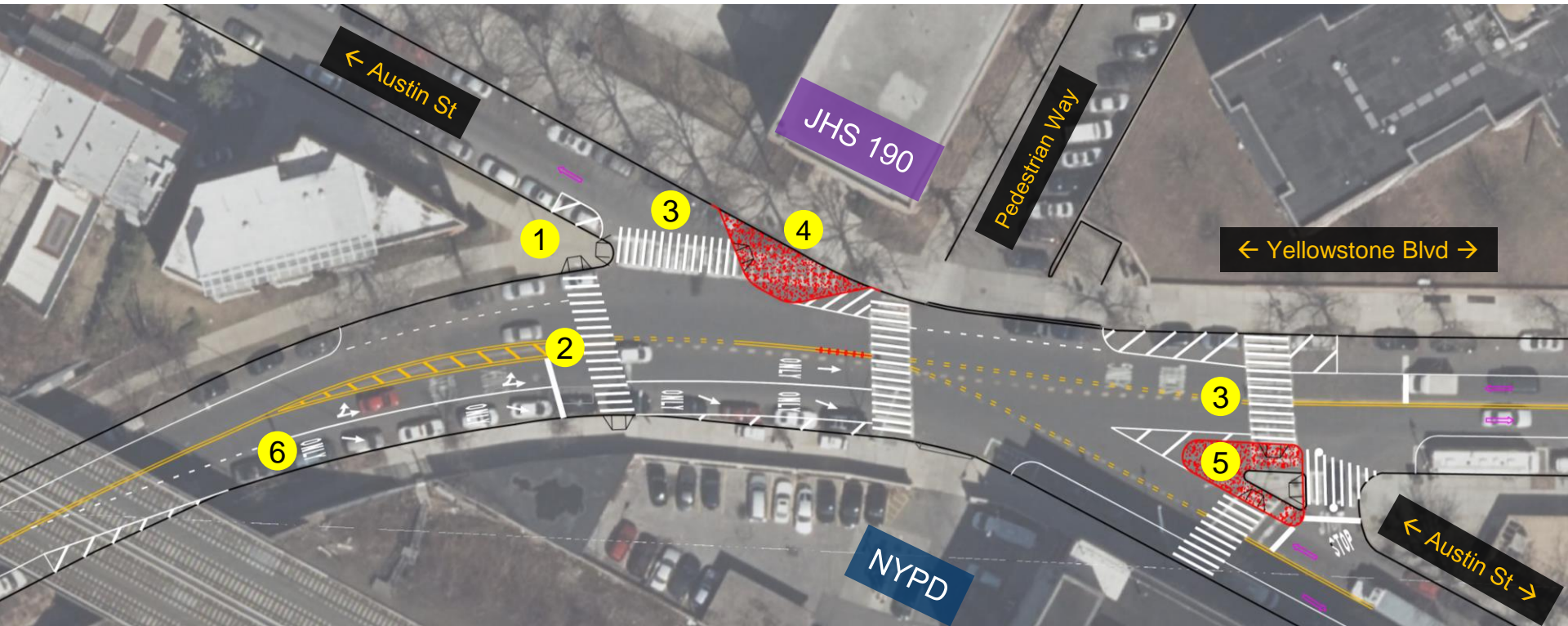
PROPOSAL

- Relocate NYPD parking to accommodate right turn lane for eastbound Yellowstone Blvd



SUMMARY OF PROPOSAL

1. Add new crosswalk and pedestrian signals on west leg of intersection
2. Install additional traffic signal to increase visibility of stop control
3. Add pedestrian crossing time on north and east leg of intersection
4. Install concrete curb extension in front of JHS 190 to shorten crossing and control vehicle turns
5. Expand pedestrian island on east leg of intersection to make crossing ADA-accessible
6. Add right turn lane on eastbound Yellowstone Blvd



PLAN BENEFITS

Yellowstone Blvd and Austin St

- Reduces speeding and calms traffic at intersection adjacent to JHS 190
- Adds missing crosswalk and pedestrian signals
- Shorter pedestrian crossing distances and wait times
- Upgrades existing pedestrian island to ADA-accessible design
- Adds right turn lane to clarify vehicle movements and reduce congestion
- Adds additional signal to ensure eastbound vehicles stop at correct location
- Responds to community requests



Austin St at Yellowstone Blvd looking east

THANK YOU!

Questions?

Contact: NYCDOT Queens Borough Commissioner's Office – (212) 839-2510



NYC DOT



NYC DOT



nyc_dot



NYC DOT