



# Wren Pl/175<sup>th</sup> St and 108<sup>th</sup> Ave/Rex Rd

---

DOT School Safety Unit

Presentation to Community Board 12 | June 14, 2022

# Background

Wren Pl/175<sup>th</sup> St and 108<sup>th</sup> Ave/Rex Rd

---

1

# Vision Zero

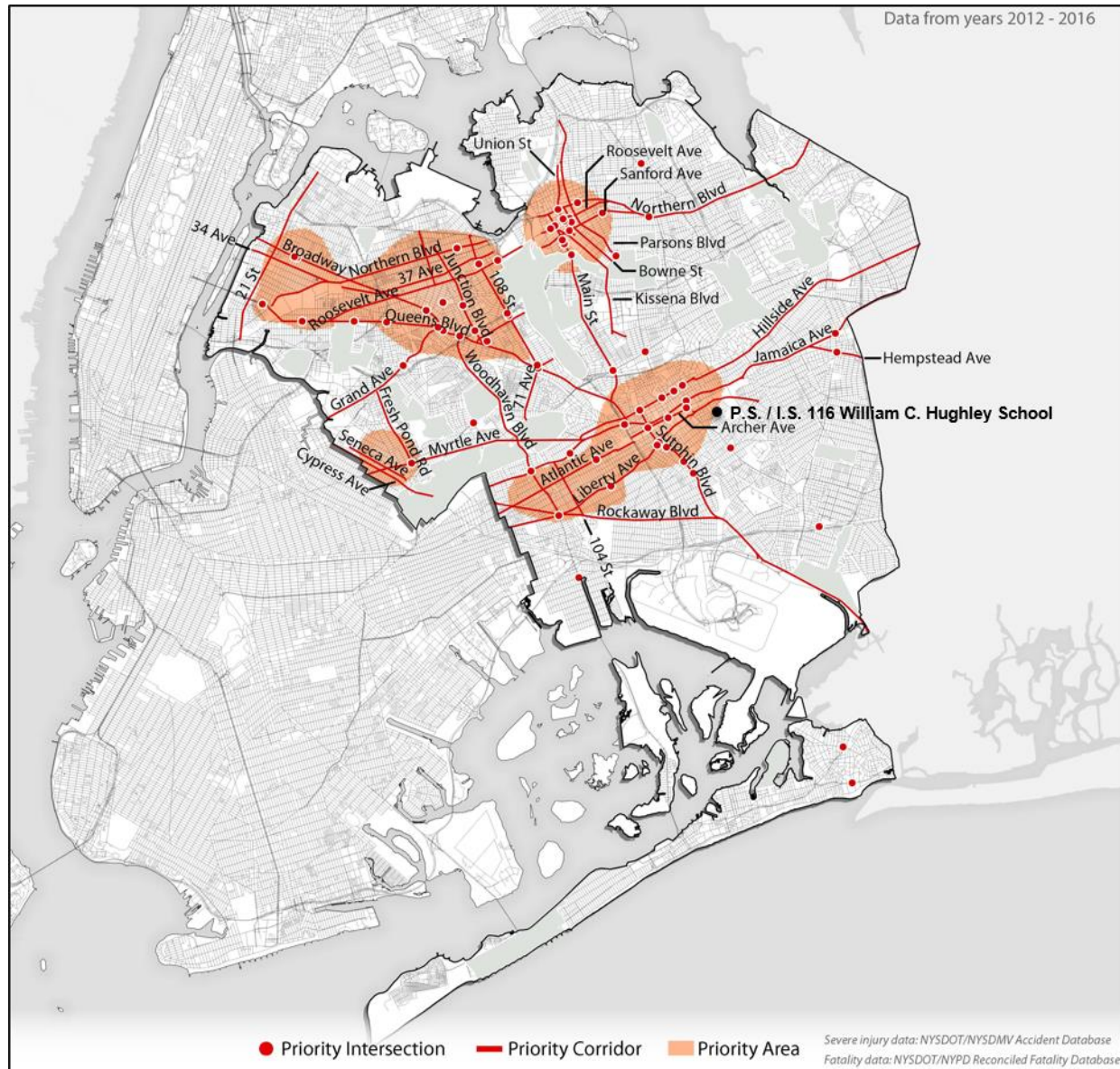
## A Citywide Effort

### Vision Zero

- Multi-agency effort to reduce traffic fatalities in NYC
- Borough Action Plans released in 2019
- Priority Intersections, Corridors, and Areas identified for each borough

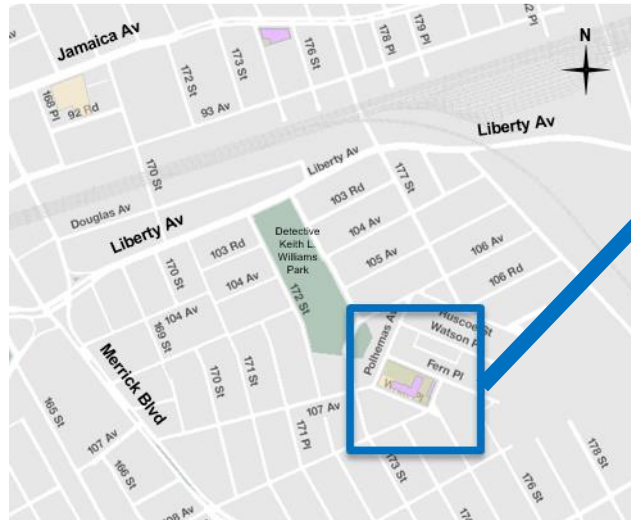
### School Safety

- DOT School Safety implements the Vision Zero program by developing street improvement projects near schools





# Project Area

## Wren Pl/175<sup>th</sup> St and 108<sup>th</sup> Ave/Rex Rd



### Key

-  = School
-  = Q42 Bus Stop

# Existing Conditions

Wren Pl/175<sup>th</sup> St and 108<sup>th</sup> Ave/Rex Rd

---

2

# Wren Pl/175<sup>th</sup> St & 108<sup>th</sup> Ave/Rex Rd

## Existing Conditions

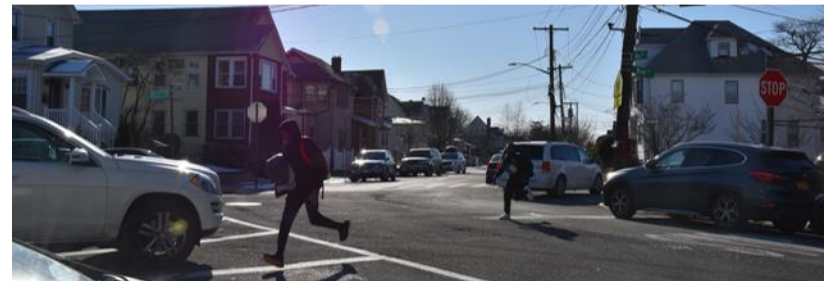
Skewed intersection with long unmarked crossing distances



# Wren Pl/175<sup>th</sup> St & 108<sup>th</sup> Ave/Rex Rd

## Existing Conditions

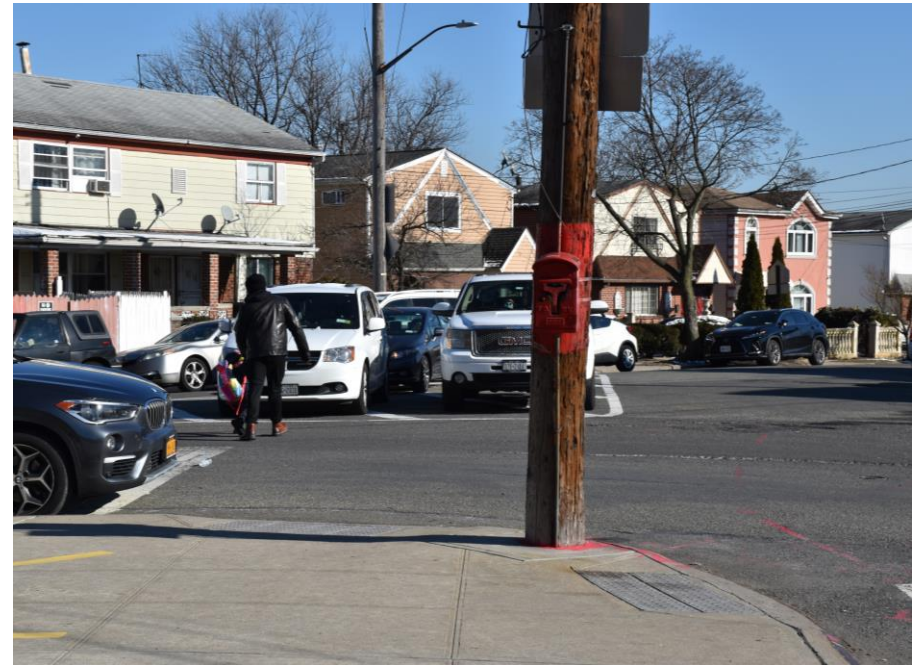
Slip lane allows for fast turns and unpredictable driver behavior



# Wren Pl/175<sup>th</sup> St & 108<sup>th</sup> Ave/Rex Rd

## Existing Conditions

Double parked vehicles and vehicles parked in channelization limit visibility



# Proposal

Wren Pl/175<sup>th</sup> St and 108<sup>th</sup> Ave/Rex Rd

---

3

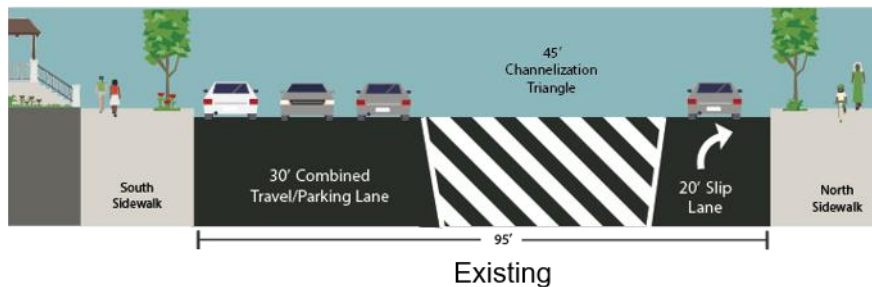
# Wren Pl/175<sup>th</sup> St & 108<sup>th</sup> Ave/Rex Rd

## Proposal: Intersection Normalization with Asphalt Art

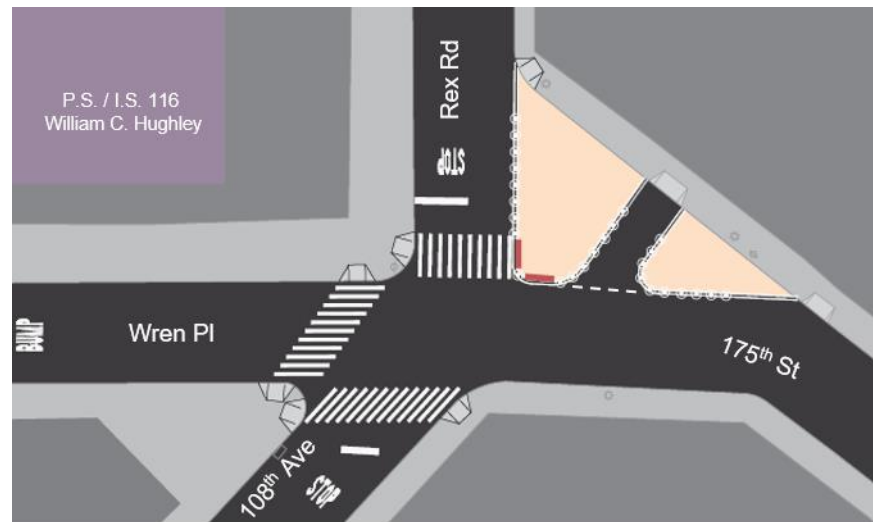
### Existing



Wren Pl/175<sup>th</sup> St



### Proposed



Wren Pl/175<sup>th</sup> St



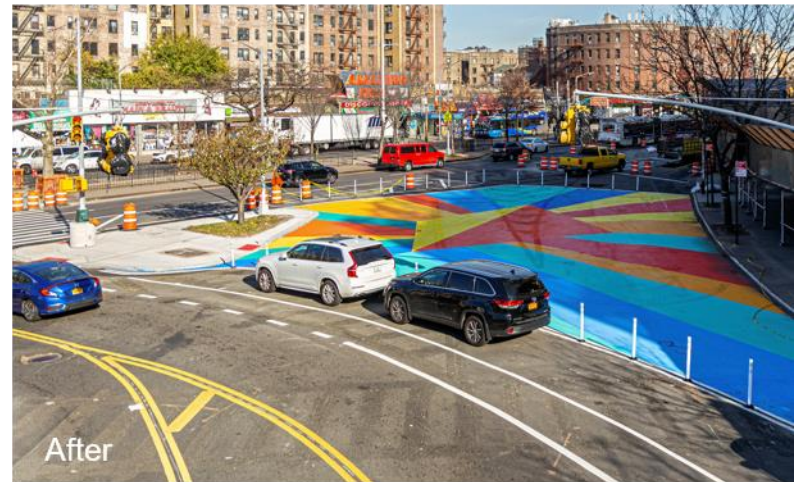
# Wren Pl/175<sup>th</sup> St & 108<sup>th</sup> Ave/Rex Rd

## Proposal: Intersection Normalization with Asphalt Art

Columbia St & Dwight St, Brooklyn



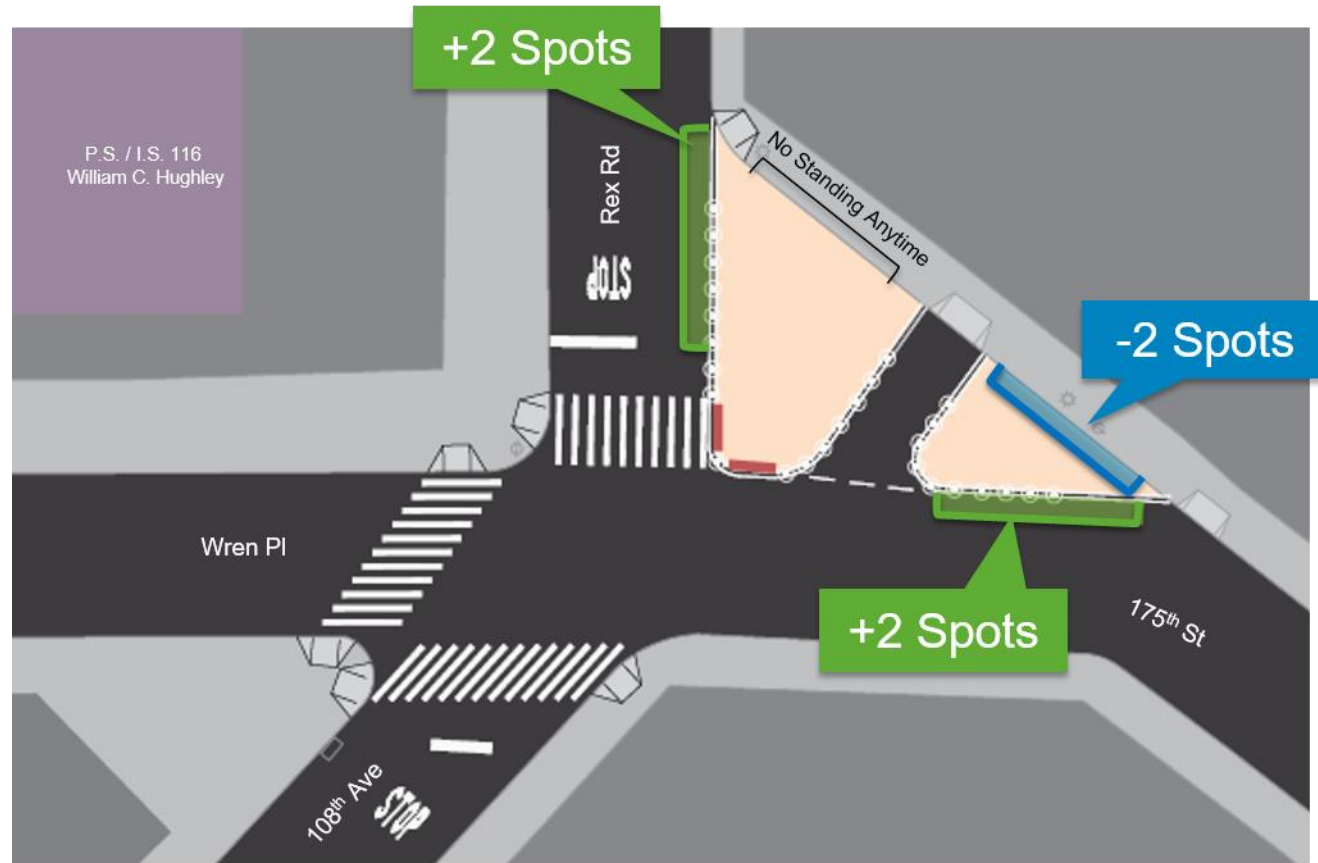
Macombs Rd & University Ave, Bronx



# Wren Pl/175<sup>th</sup> St & 108<sup>th</sup> Ave/Rex Rd

## Proposal: Parking Impacts

- Relocates two spots on 175<sup>th</sup> St
- Adds two spots on Rex Rd
- **Total: +2 spots**



# Wren Pl/175<sup>th</sup> St & 108<sup>th</sup> Ave/Rex Rd

## Proposal Summary

- Simplify intersection via slip lane closure
- Install new marked crosswalk on Rex Rd
- Install painted pedestrian space with asphalt art
- Shorten pedestrian crossing distances
- Improve visibility

### Existing Configuration

Wren Pl/175<sup>th</sup> St and Rex Rd/108<sup>th</sup> Ave



### Proposed Configuration

165<sup>th</sup> St and Rogers Pl, BX



# Thank You!

Questions?



Contact: NYCDOT Queens Borough Commissioner's Office – (212) 839-2510



NYCDOT



nyc\_dot



nyc\_dot



NYCDOT