



Westchester Ave Waters Ave - Middletown Rd

School Safety Concerns

CM Aldebol | April 23, 2026



Overview

1. Background
2. Existing Conditions
3. Proposed Improvements
4. Next Steps

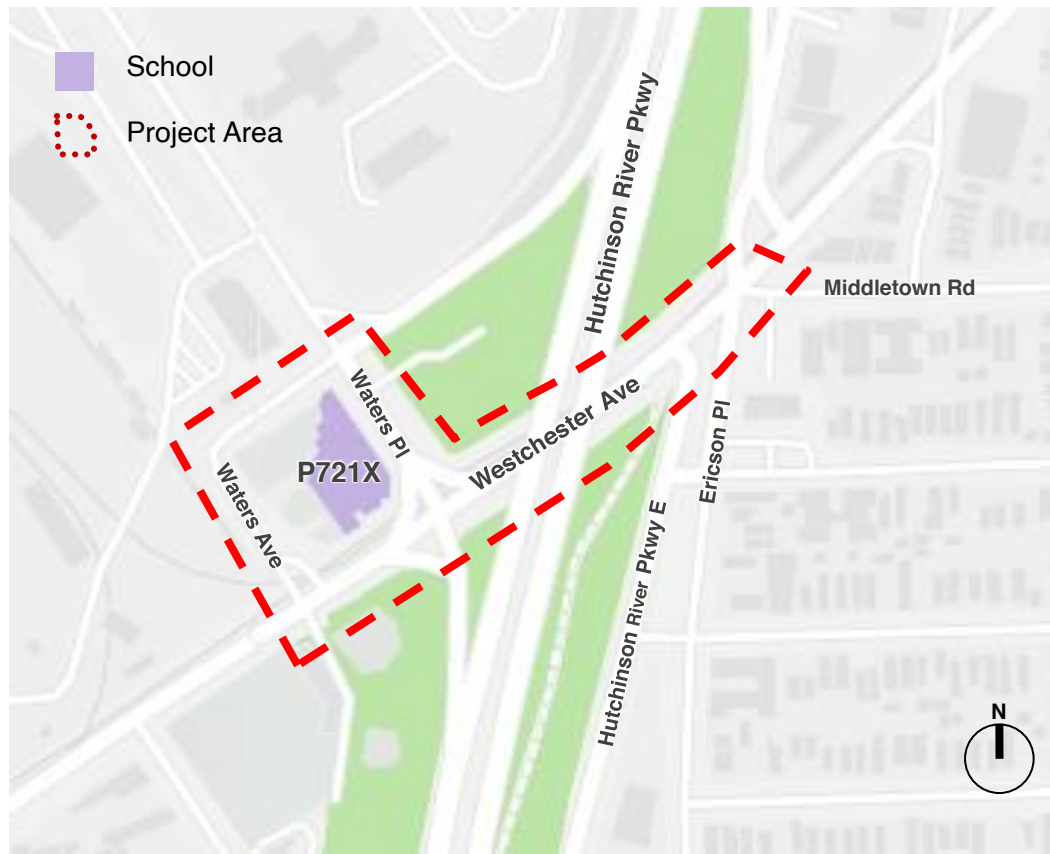
Background

1

Westchester Ave, Waters Ave - Middletown Rd

Background

- Requests for safety improvements from P721X
- Complaints about drivers failing to yield to pedestrians crossing
- Recent capital reconstruction of Westchester Ave bridge over Hutchinson River Pkwy



Safety Concerns

Injury data

- 75 total injuries
- 32% of severe injuries were pedestrians or cyclists
- 42% of pedestrians injured were crossing with a walk signal

Injury Summary — 2020-2024 (5 Years)

Mode	Total Injuries	Severe Injuries	Fatalities	KSI
Pedestrian	17	0	0	0
Bicyclist	7	0	0	0
MVO	47	0	0	0
Other Motorized	4	0	0	0
Total	75	0	0	0



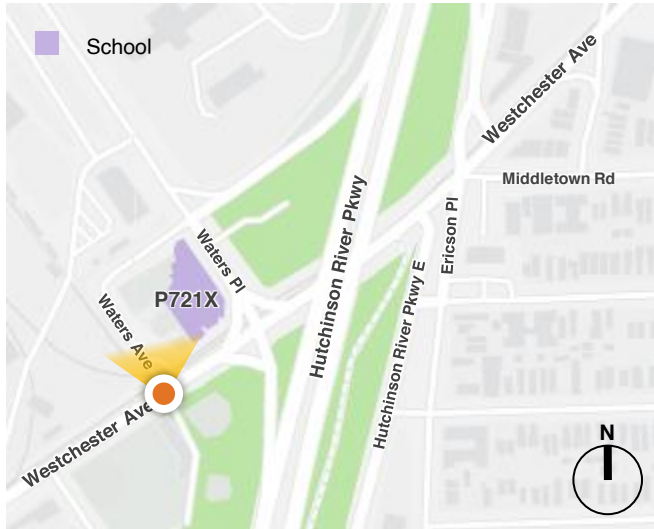
Existing Conditions

2

Westchester Ave: Existing Conditions

Waters Ave

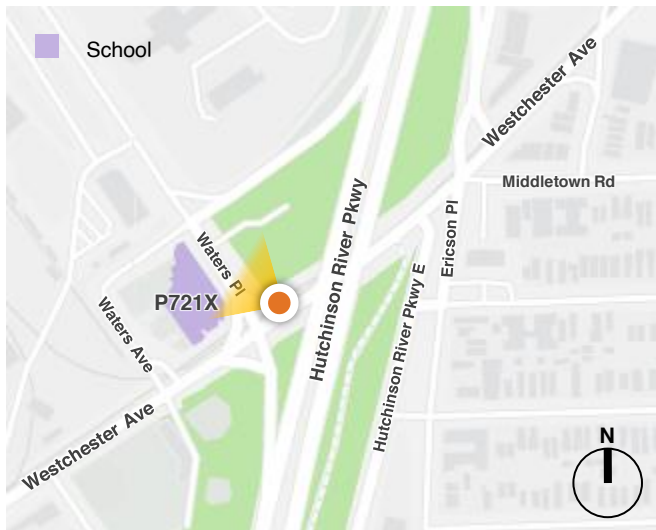
- Vehicles turning onto Waters Ave go around both sides of the island, creating multiple conflict points with pedestrians



Westchester Ave: Existing Conditions

Waters PI

- Drivers fail to yield to pedestrians crossing slip lane when turning onto Waters PI
- Multiple lanes to turn left from reduce visibility of pedestrians for drivers leaving Waters PI



Westchester Ave: Existing Conditions

Middletown Rd and Hutchinson River Pkwy On-ramp

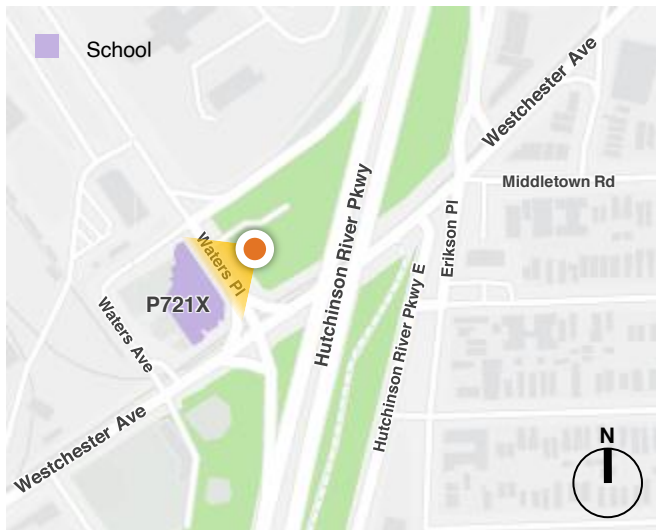
- Drivers taking fast left turns from Westchester Ave onto Hutchinson River Pkwy service road
- Long crossing distance for pedestrians



Westchester Ave: Existing Conditions

Waters PI

- Sidewalk grates and major slope on east side of school cause issues for students using wheelchairs or walkers



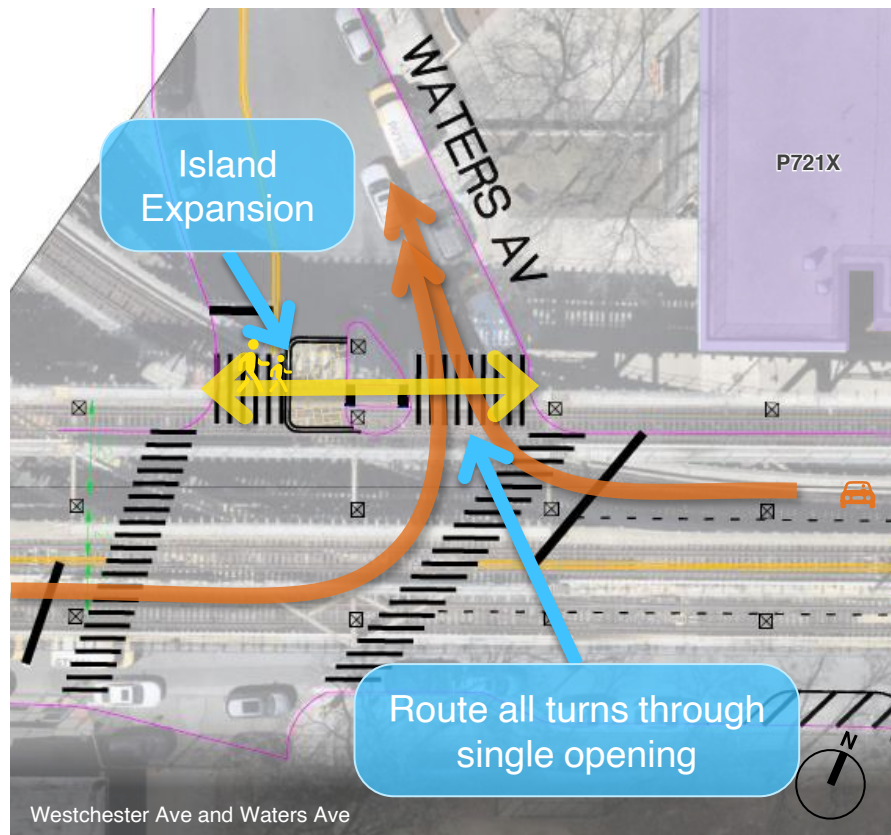
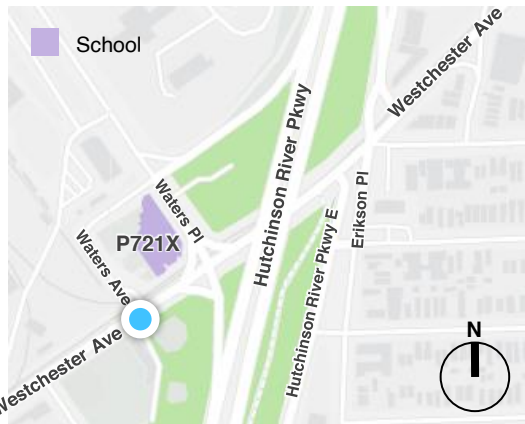
Proposed Improvements

3

Westchester Ave and Waters Ave

Proposed Improvements

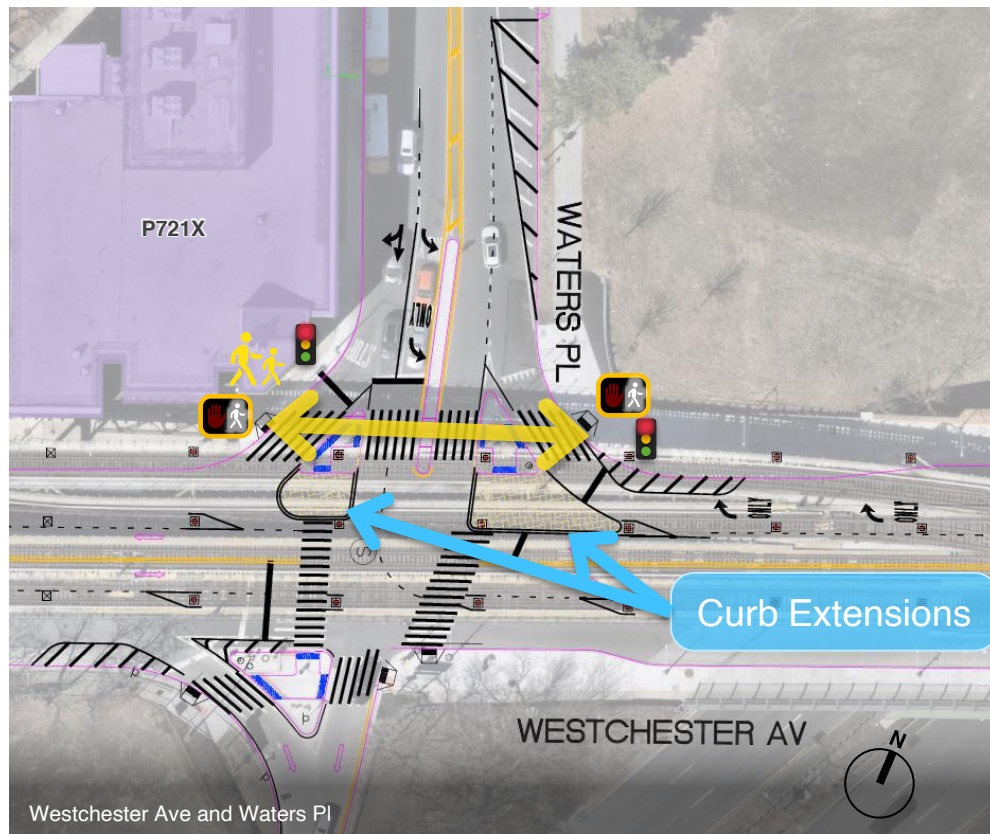
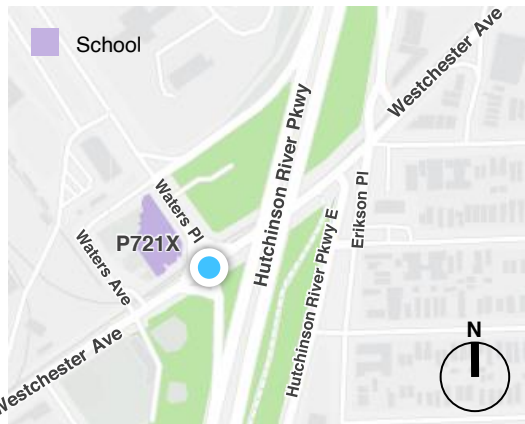
- Install painted island expansion to reduce crossing distances
- Route all incoming vehicles to one side of the island to reduce confusion and conflicts



Westchester Ave and Waters Pl

Proposed Improvements

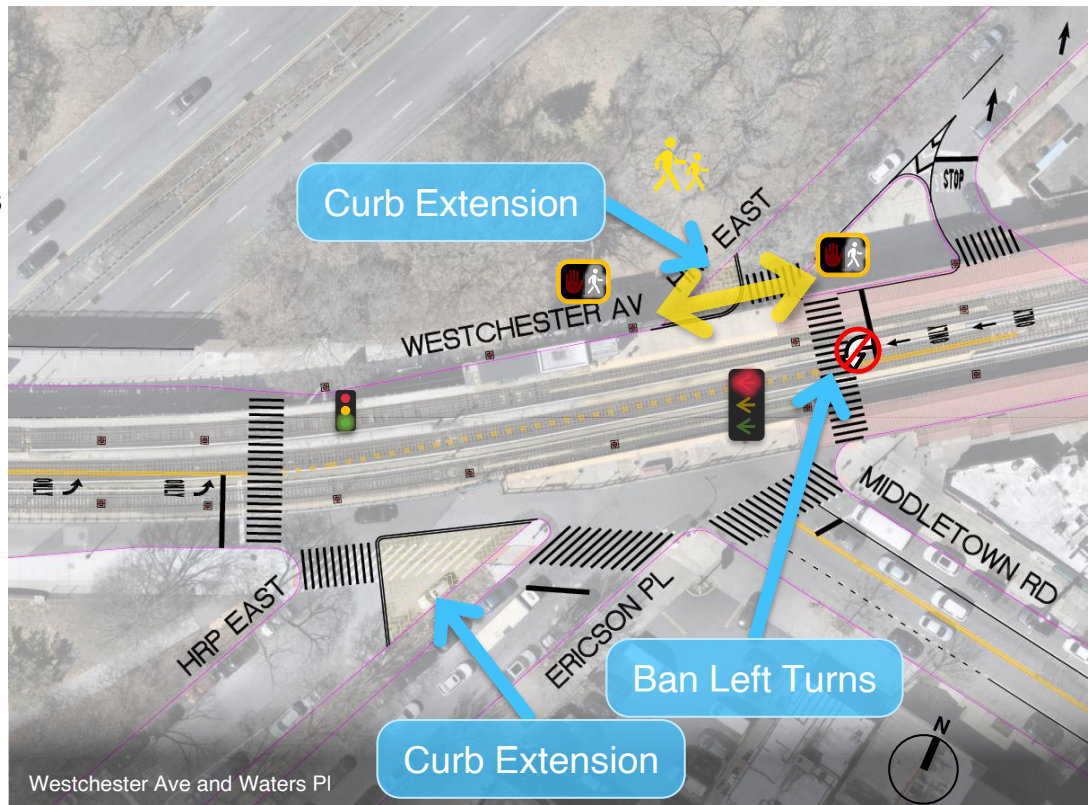
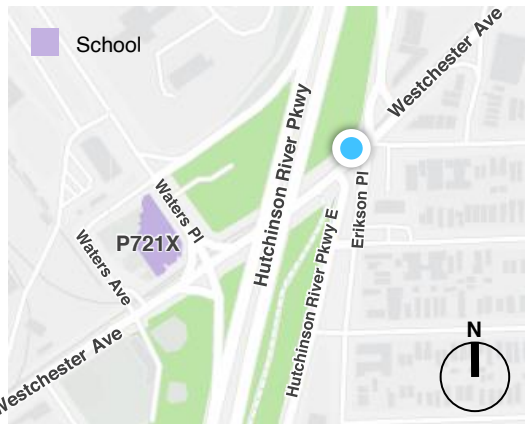
- Signalize slip lanes to remove conflicts with pedestrians
- Install painted island expansions to reduce crossing distances
- Remove double-left turn lane



Westchester Ave and Middletown Rd / Ericson Pl

Proposed Improvements

- Install painted curb extensions to reduce crossing distances and slow down turns
- Add Leading Pedestrian Interval so pedestrians get a head start crossing HRP East
- Ban left turns from westbound Westchester Ave and give eastbound Westchester Ave dedicated left turn lane and signal phase



Next Steps

4

Westchester Ave, Waters Ave - Middletown Rd

Next Steps

- Notify Community Boards 10 and 11 and CM Aldebol (Spring 2026)
- Install improvements (Spring/Summer 2026)
- Initiate process for capital reconstruction of Waters PI sidewalk



Westchester Ave and Waters PI

Thank You!

Questions?

NYC DOT
Bronx Borough Commissioner's Office
212-748-6680



NYCDOT



nyc_dot



nyc_dot



NYCDOT