



# Webster Ave, E Gun Hill Rd to E 233<sup>rd</sup> St

## Truck Route Safety Improvements

CM Dinowitz – May 9, 2022

# Webster Ave, E Gun Hill Rd to E 233rd St

---

## Presentation Overview

- Background
- Existing Conditions
- Proposal –
  - Reduce lanes from 2-to-1 travel lane
- Feedback/ Questions



# Project Location & Goals

- Located between Woodlawn Cemetery and the Bronx River Parkway
- Corridor length runs approximately 1.2 miles
- Project goal is to reduce speeding and vehicle crash incident through design
- This is a Local Truck Route



---

# Background



# Background

---

## Planning Framework

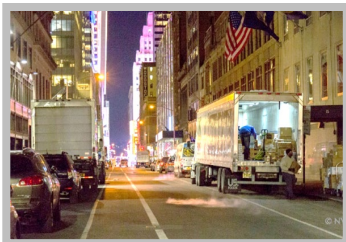
- **Delivering New York: A Smart Truck Management Plan for NYC**
  - **Safety:** improve the safety of truck travel at intersections and along corridors
  - **Sustainability:** foster the sustainable and environmentally responsible movement of goods
  - **Freight Efficiency:** Improve the efficiency of freight movement to, from, and within NYC
  - **Partnerships & Knowledge:** Grow public and private partnerships to increase knowledge about freight
- DOT's focus on improving 1,000 intersections to make it safer for pedestrians



[Delivering New York Plan](#)

# Freight Toolkit

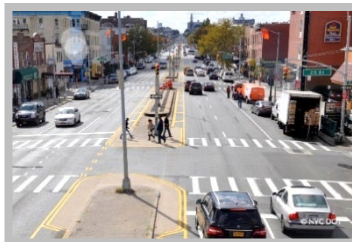
## How We Manage Freight Activity



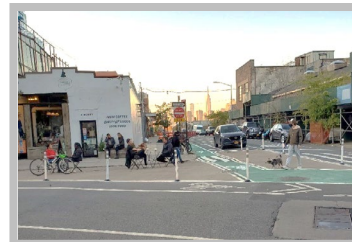
Off-Hour Deliveries



Expand Loading Zones



Truck Route Enhancements



Street Improvement Projects



Truck Electrification & Decarbonization



Truck Safety Education, Outreach, & Partnerships



Truck Safety and Compliance Enforcement Coordination



Microdistribution Hubs



Commercial Cargo Bike Program



Blue Highways

---

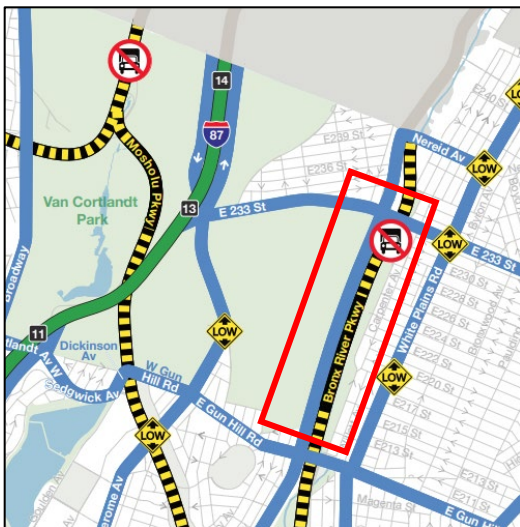
## Existing Conditions

# 2

# Existing Conditions

## Overview

- Short piece of residential use on the Southern section
- Webster Ave runs between Woodlawn Cemetery and Bronx River Parkway
- Webster Ave is a Local Truck Route



Project location on the NYC Truck Route Map





# Truck Priority Safety Corridors

## Crash Data

- Identified as a Truck Priority Safety Corridor, a corridor experiencing high rates of truck-involved crashes along

	Total Injuries
Pedestrians/ Cyclist	2
Motor Vehicle Occupant	20
<b>Total</b>	<b>22</b>

Injuries at Webster Av, from E 233<sup>rd</sup> St to E Gunhill Rd  
*Injury Summary, 2014-2019 (5 years)*

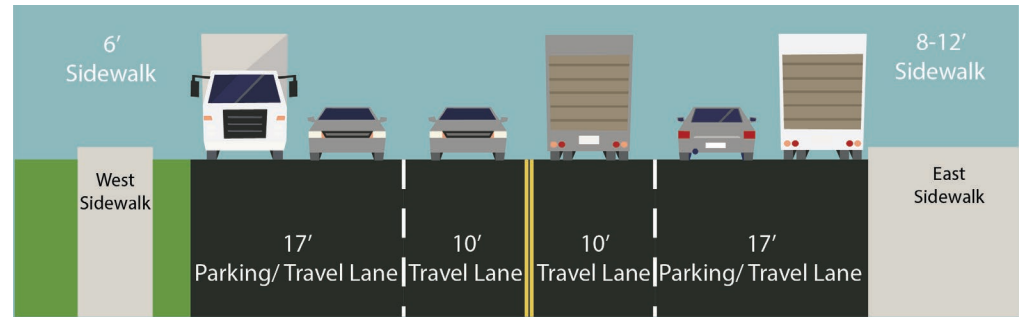


# Existing Conditions

## Wide 2-Travel Lane Both Direction

- 2-travel lanes in both directions
- Overnight and long-term truck parking
- Lack of crosswalks for pedestrians along the long stretch
- Observed speeding along corridor

Existing Conditions



---

Proposal

3

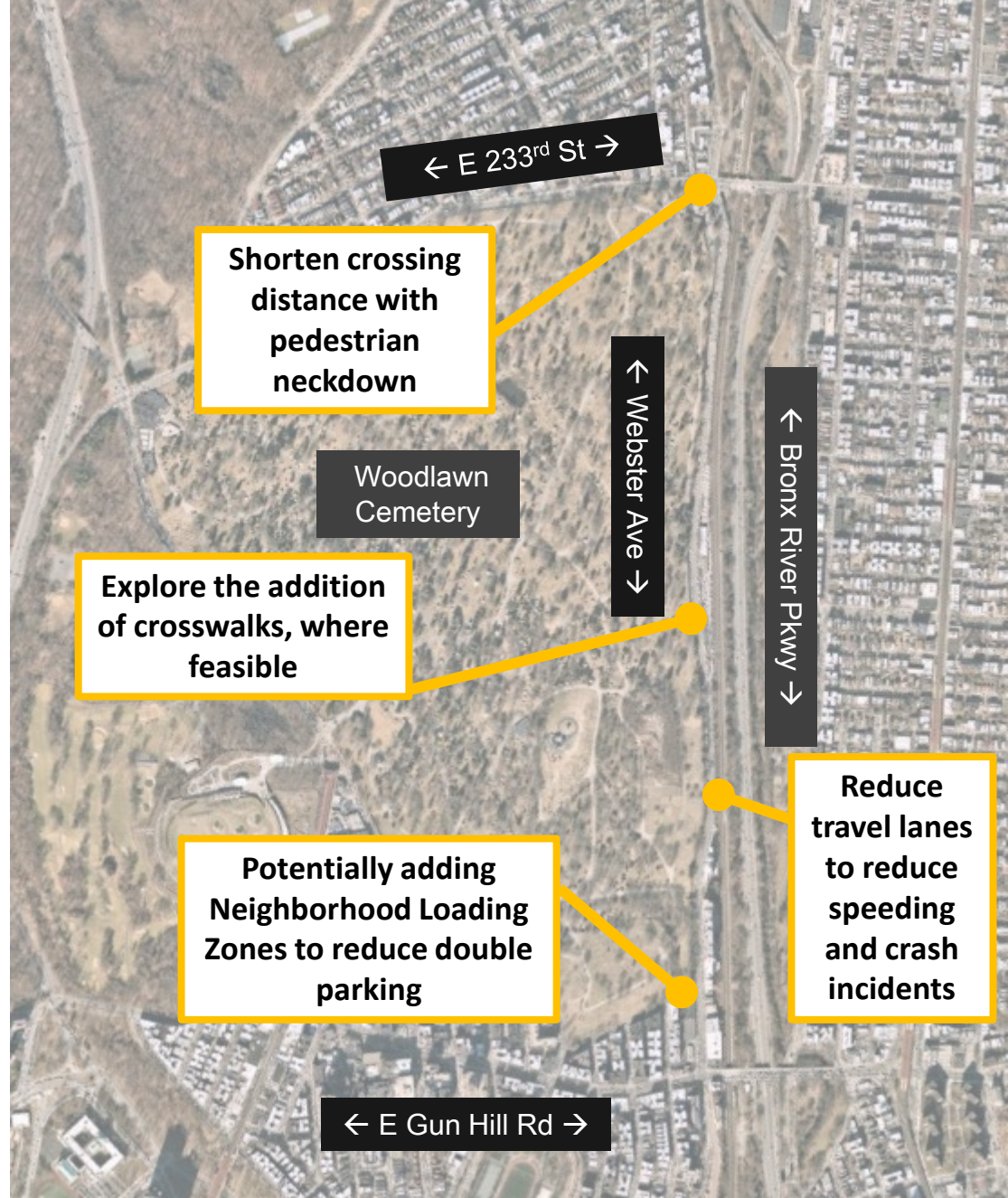
# Planned Improvements

## Plan Overview

Reduce speeding and improve pedestrian visibility and shorten crossing distances along the ~1.2 mile stretch



*Southern portion of project area, near residential buildings*



# Neighborhood Loading Zone

## Overview

### Goal:

Reduce the amount of delay and safety issues that stem from double parking by providing dedicated space for vehicles to load and unload goods and passengers, especially on residential streets.

### Target Users:

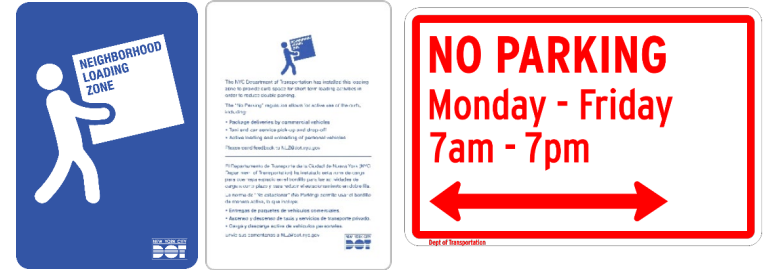
- Personal vehicles for quick pickup/drop-off of passengers, groceries etc.
- Commercial delivery vehicles for residential and commercial delivery.
- Taxis and FHV for passenger pickup/drop-off

### Current Locations:

142 NLZs throughout the city, **currently expanding into new neighborhoods throughout the five boroughs.**

### Signage and Regulation:

'No Parking M-F, 7AM – 7PM' standard with slight adjustments depending on the location, with pedestrian level information sign with program overview.

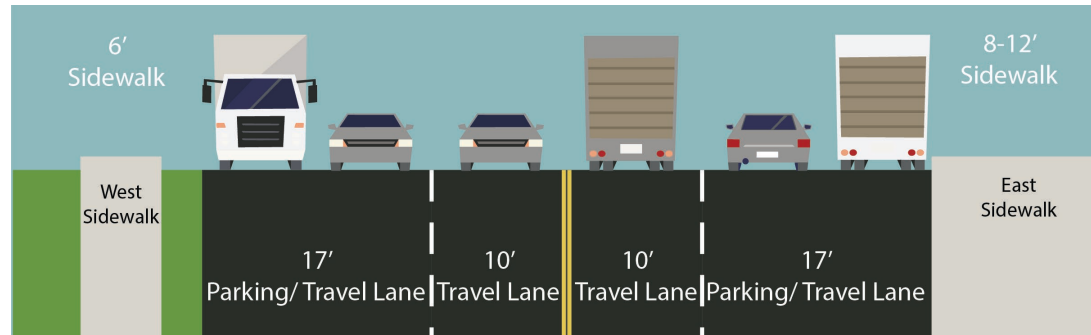


*Delivering vehicle in a Neighborhood Loading Zone*

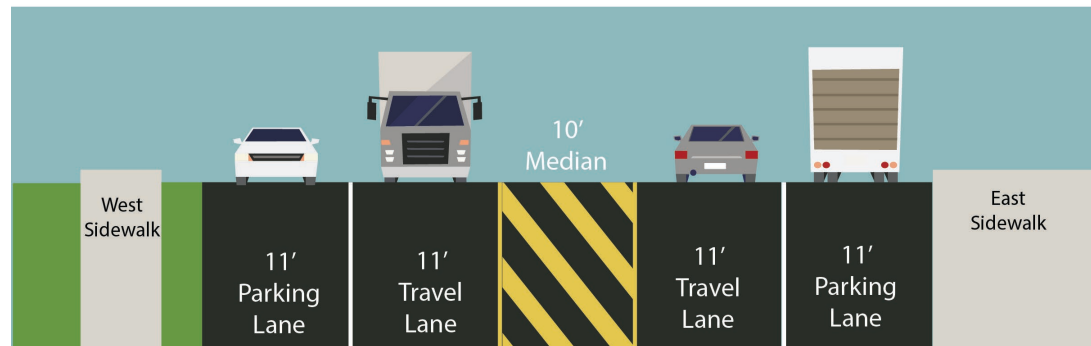
# Proposal

## Design Plan

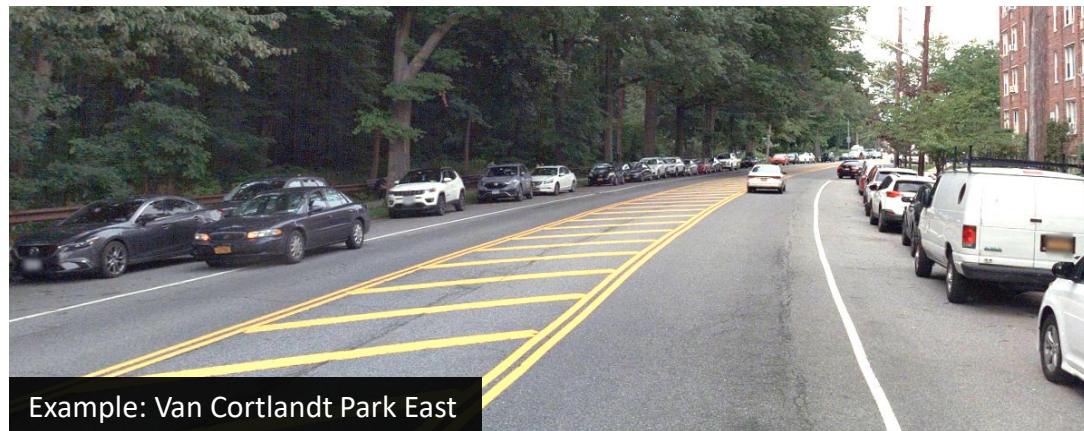
- Reducing of travel lanes in both directions from 2 to 1 to address speeding
- Marking a 10 feet painted median along the corridor, maintaining turn bay at E Gun Hill Rd
- Installing painted pedestrian neckdowns to shorten long crossing distances
- Exploring the addition of crosswalks where there are long stretches without pedestrian access
- Potentially adding few Neighborhood Loading Zones on the southern section, where needed



Existing Conditions



Proposed Conditions



# Thank You!

Questions?



NYCDOT



nyc\_dot



nyc\_dot



NYCDOT