



# W. 103<sup>rd</sup> Open Street Enhancements

CB 7 Transportation Committee

06/14/2022



# PUBLIC REALM FEEDBACK LOOP



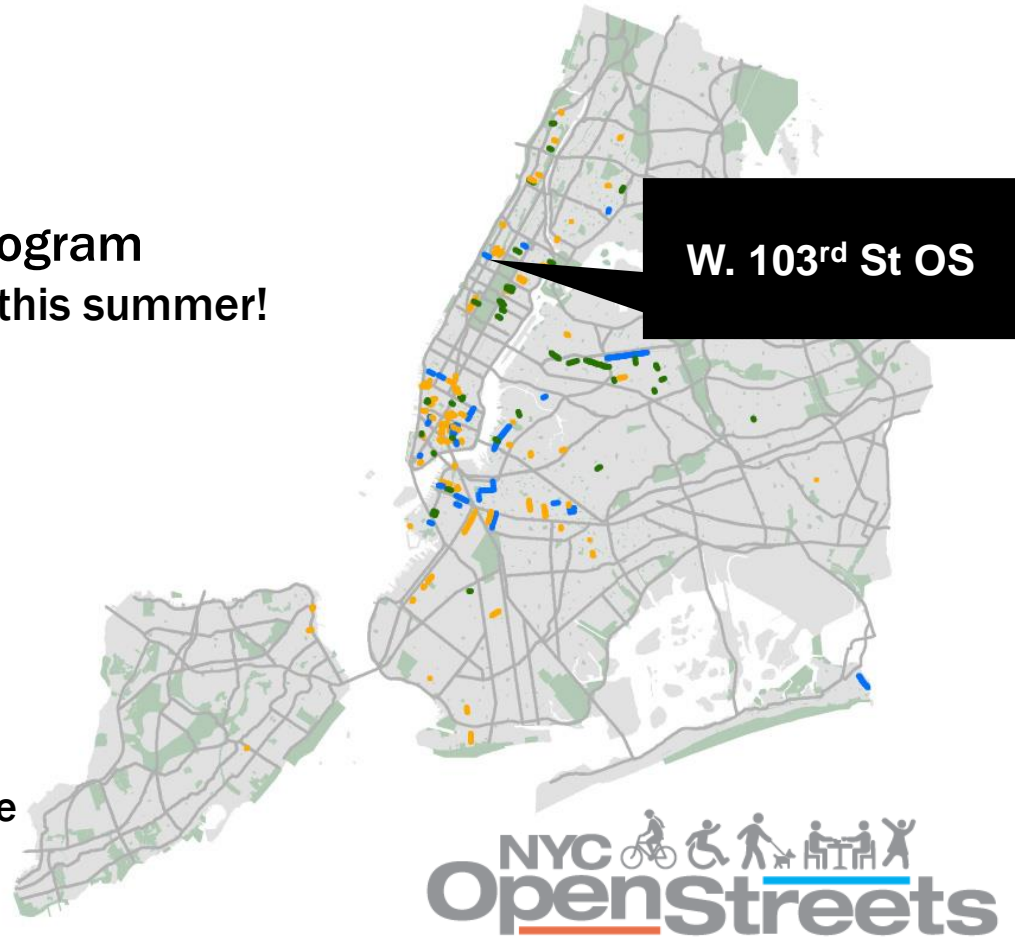
# 2022 Open Streets

Third Season, now a permanent program

- 150+ Locations, more to come this summer!
- 300+ Blocks
- 120+ Community Partners
- 20 City Maintained Locations

## 2022 Program Vision

- Equity in line w/ NYC Streets Plan Priority Investment Areas
- Sustainable operations & partner growth to cultivate long-term change
- Increase school participation



# W. 103<sup>rd</sup> St Open Street

Amsterdam Ave to Riverside Dr  
Started May 2020



# 103<sup>rd</sup> Street Open Street Community Coalition



# Outreach Events

## February 2021

- Stakeholder interview with Madelyn Innocent, a member of the CB7 NYCHA Task Force
- Park to Park 103 Presentation and discussion with Broadway Malls
- Park to Park 103 Presentation and discussion with Bloomingdale Aging in Place
- Park to Park 103 Presentation and discussion with Hosteling International

## March 2021

- Park to Park 103 Presentation to Toll Brothers Development

## April 2021

- Street Arts Event + Tabling + Surveying

## May 2021

- Park to Park 103 Presentation to the W 102nd & W 103rd Block Association
- Park to Park 103 Presentation to NYCHA Tenants Association

- Presentation to Purple Circle Early Childhood Education Center

## June 2021

- Tabling at Douglass Houses Basketball Court Opening June 3, 2021
- Follow up presentation to the W 102nd & W 103rd Block Association
- Tabling + Surveying at Make Music NY Event
- Street Lab activations on W 103 Open Street Amsterdam Ave - Broadway Blocks

## July 2021

- Temporary Mural and curb extension activation on July 24, 2021

## September 2021

- Park(ing) Day outreach events on W 103rd and Broadway and Amsterdam Ave

## October 2021

- Halloween Parade with Mary Christian and the W 102 & 103rd Streets Block

## Association

## January 2022

- 2020-21 Report and Community Vision finalized
- Community Engagement Manager Hired

## February 2022

- 2020-21 Report and Community Vision is shared
- Valentine's Day at The Marseilles
- Park to Park 103 Valentine's Day Bingo

## March 2022

- A Spring Celebration on Park to Park 103

## April 2022

- #Streetarts- Annual Earth Day Celebration

## June 2022

- June Funday event (May reschedule) Zelma's cafe.
- Make Music NY event

# Stakeholder Outreach

Zelma's Caffe

BeFitNYC

Frederick Douglass Center

The West 104th Street Community

Garden

210 W. 103rd Co-Op

Alms Chic

Broadway Malls Association

Columbia Facilities at 2700

Broadway

Columbus Amsterdam BID

Columbus Avenue BID

Hosteling International

Manhattan Valley Development

Corporation

NYC DOT

NYCHA Frederick Douglass Houses

Tenant Association

NYPD 24th Precinct Community

Affairs

New York Horticultural Society

One Block UWS

Purple Circle Early Childhood

Education Program

Restaurante Bosino

Street Lab

Streetopia UWS

Streetopia Youth for Livable Cities

The City Cleanup Corps

The Marseilles

The UWS Coalition of Block

Associations and Community

Organizations

Toll Brothers Development

Transportation Alternatives

Valley Restoration Local

Development Corporation

W 104 Street Block Association

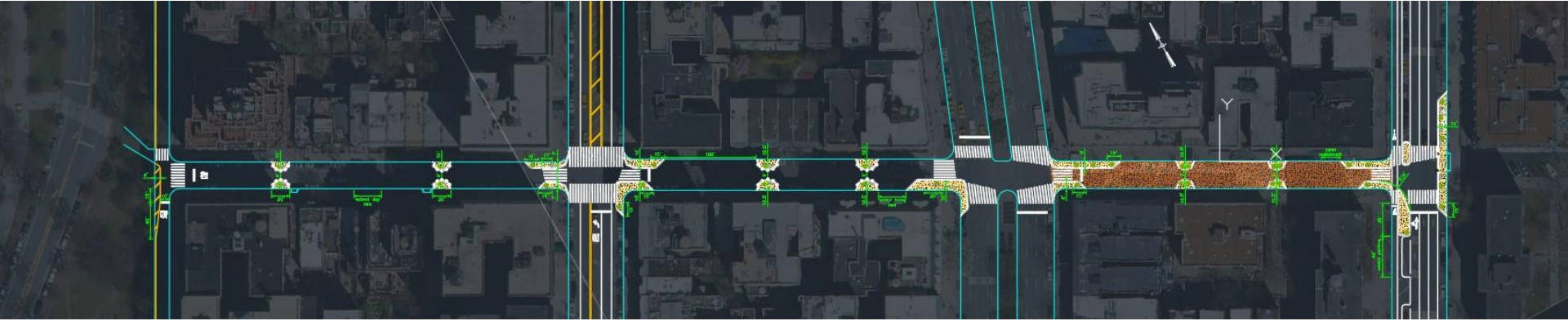
West 102nd & 103rd Streets Block

Association

West Side Federation of Senior and

Supportive Housing

# W. 103<sup>rd</sup> St



## Project Goals:

- Prioritize pedestrians + cyclists
- Expand public space and add amenities
- Enhance Safety
- Traffic Calming



# W. 103<sup>rd</sup>, Broadway – Amsterdam Gateway Block: Shared Street

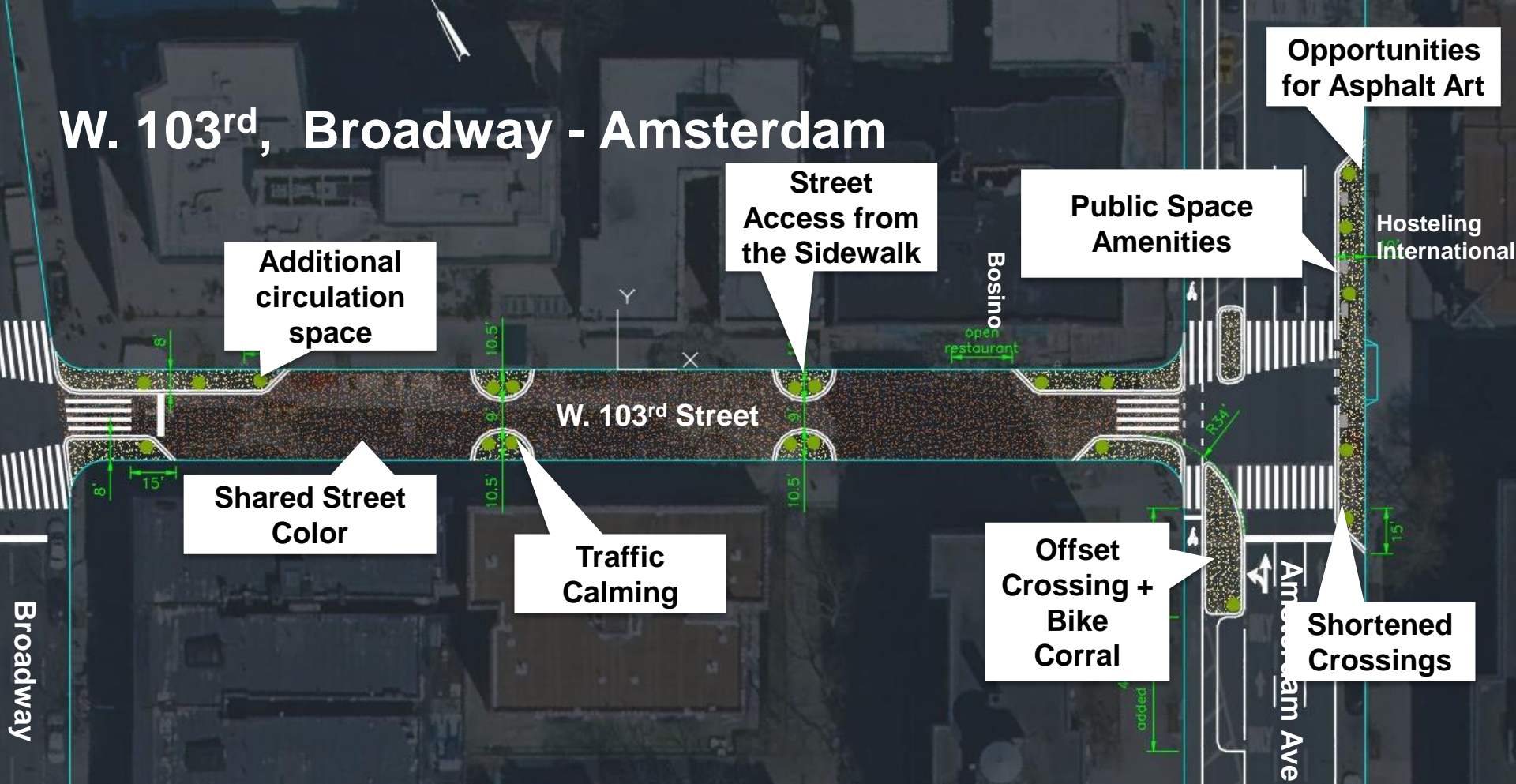


- Treat full block as Gateway to the Open Street
- Work with the Hostel to expand usable public space with potential to add amenities in the future
- Enhance safety

Broadway



Amsterdam Ave

# W. 103<sup>rd</sup>, Broadway - Amsterdam



# Curb Usage W. 103<sup>rd</sup>, Broadway - Amsterdam



-  Impacted Parking Spots (6)
-  Added Parking Spots (2)

# W. 103<sup>rd</sup>, West End Ave – Broadway Light Touch



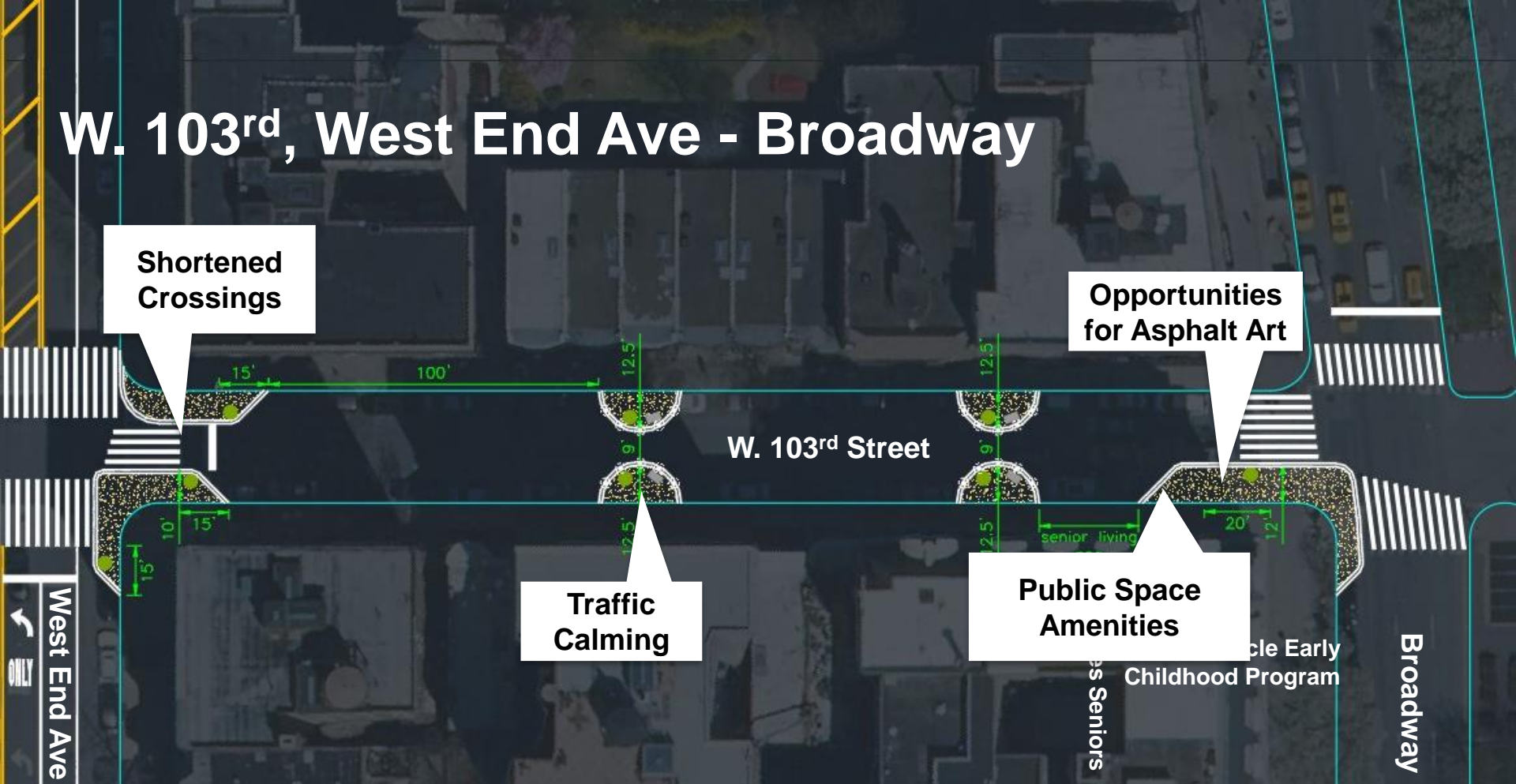
- Maintain necessary vehicular access
- Expand access to the Open Street
- Add amenities
- Slow through traffic

senior living  
Marselles Seniors  
Housing  
Purple Circle Early  
Childhood Program

West End Ave  
ONLY

Broadway

# W. 103<sup>rd</sup>, West End Ave - Broadway



Shortened Crossings

Opportunities for Asphalt Art

W. 103<sup>rd</sup> Street

Traffic Calming

Public Space Amenities

West End Ave  
ONLY

Broadway

senior living  
Childhood Program

# W. 103<sup>rd</sup>, West End Ave - Broadway



Maintain FDNY +  
DSNY Access

W. 103<sup>rd</sup> Street

Impacted Parking Spots (5)

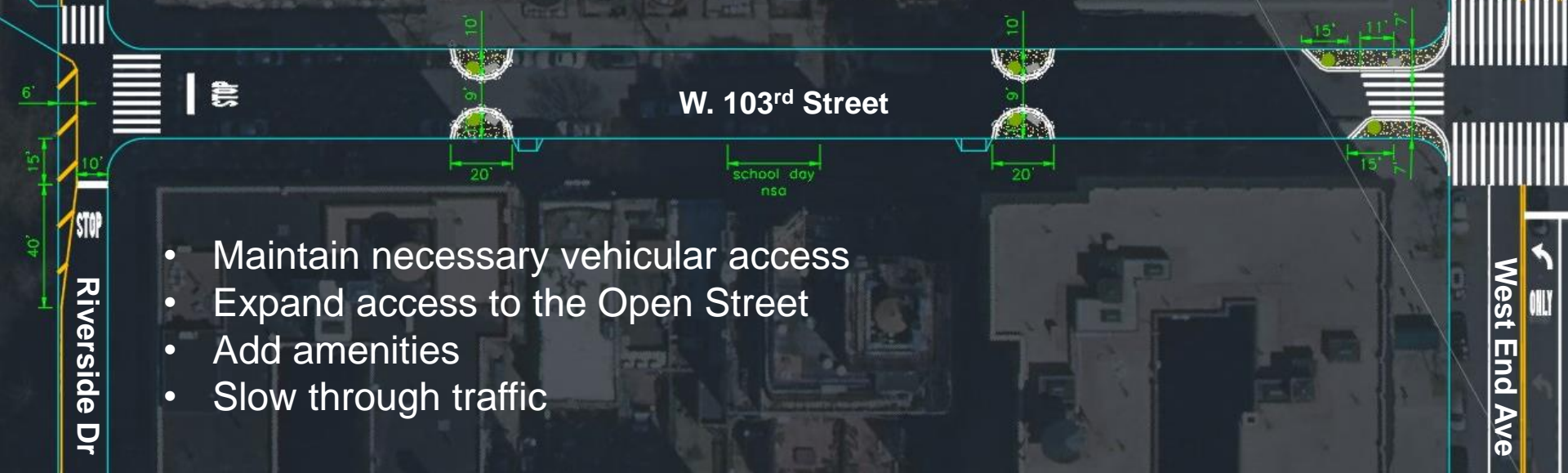
Marselles Seniors  
Housing

Purple Circle Early  
Childhood Program

West End Ave

Broadway

# W. 103<sup>rd</sup>, Riverside - West End Ave Light Touch



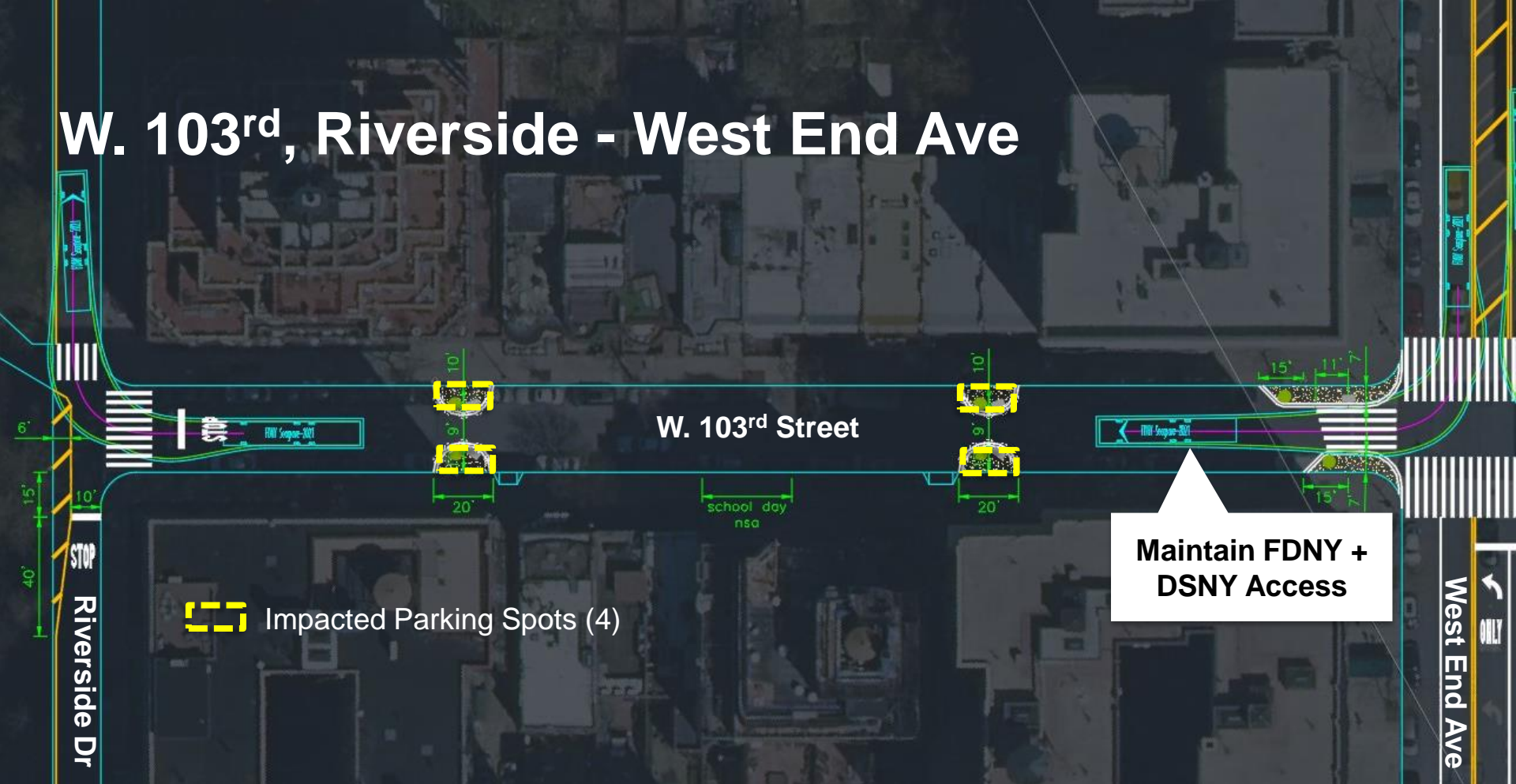
- Maintain necessary vehicular access
- Expand access to the Open Street
- Add amenities
- Slow through traffic


# W. 103<sup>rd</sup>, Riverside - West End Ave





# W. 103<sup>rd</sup>, Riverside - West End Ave



 Impacted Parking Spots (4)

**Maintain FDNY +  
DSNY Access**

# NYC DOT Toolkit

Planters

Roadway  
Epoxy Gravel  
Treatment

Flexible  
Delineators

Movable  
Furniture

Bike  
Parking

# Jerome Ave Street Seat, Bronx



# Fourth Ave Offset Crossing, Brooklyn



# Flatiron Street Shared Street, Brooklyn

Implemented: 2017



# Next Steps

**June**

**Present to CB7**

**July**

**Coordinate Final Design Details  
Scheduling & Notifications**

**August-  
September**

**Implementation**

# Thank You!

Questions?



NYCDOT



nyc\_dot



nyc\_dot



NYCDOT